

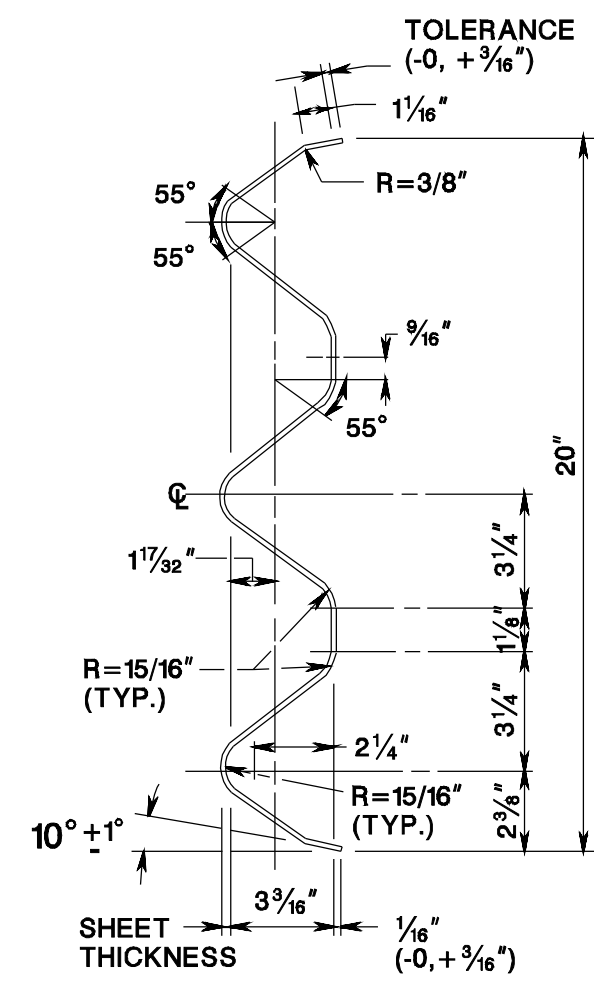
pen table= \\n\jdotprfws\vsystem\jdotwts\Projects\jdotEng\Plot\TBLS\Roadway\basic.tbl

scale= 30.0000000:1.0000000

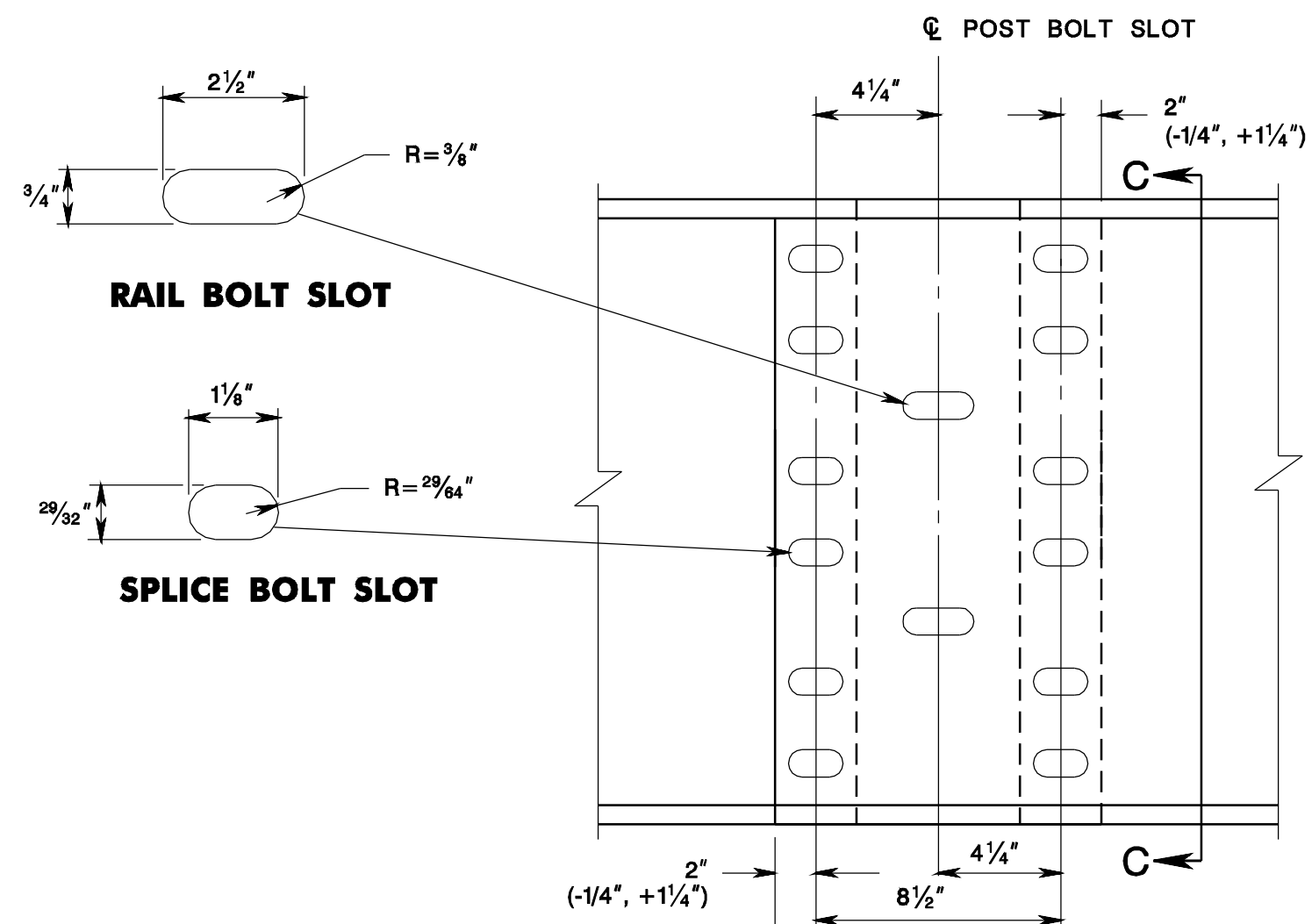
date= 17-DEC-2007 09:49

ID= TFXBHAV

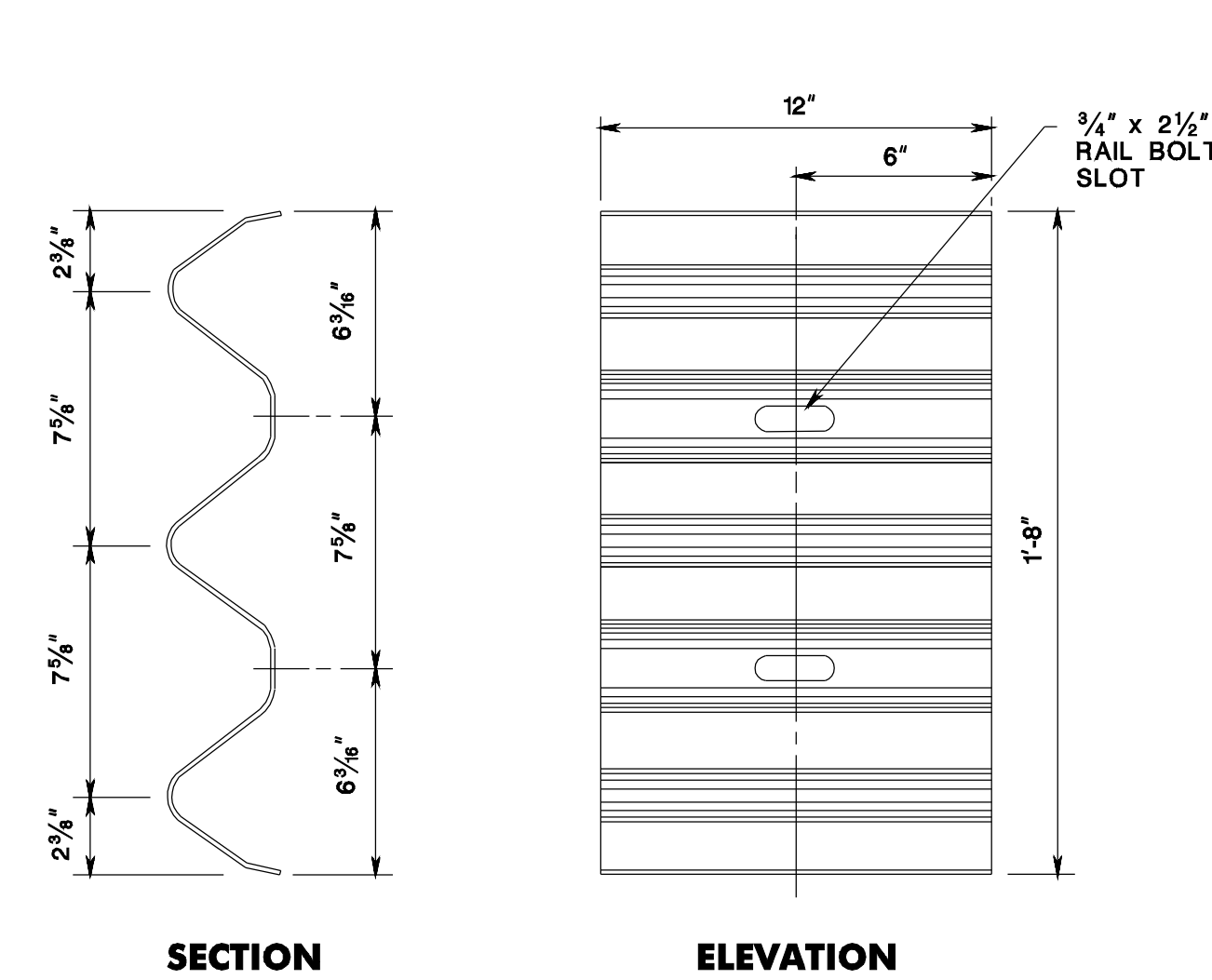
BDC0703-ORIGINAL SHEET



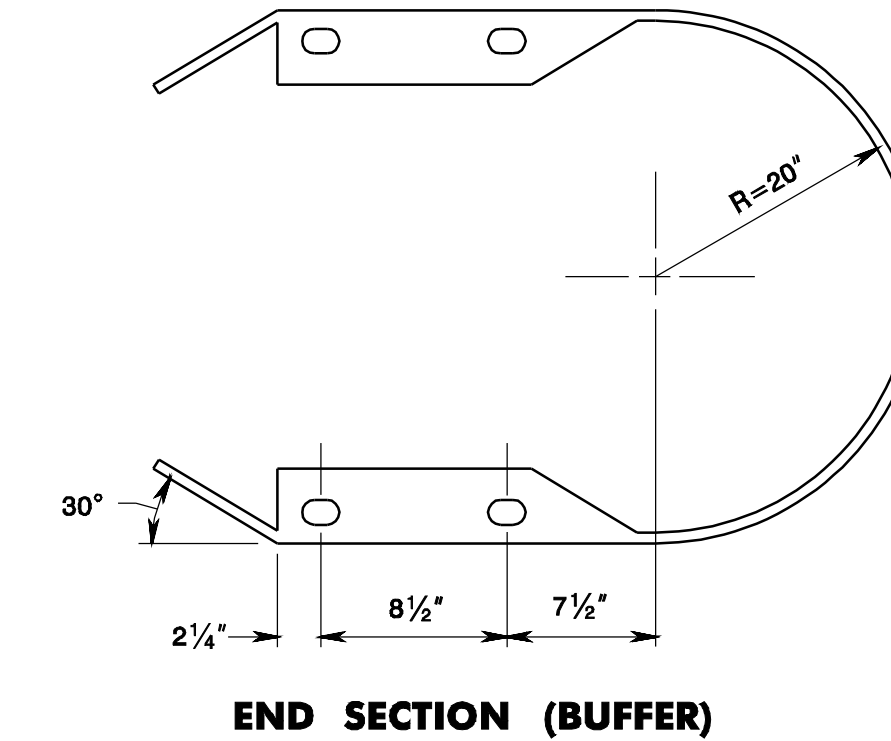
SECTION C-C
THRIE-BEAM RAIL ELEMENT
RAIL ELEMENT SHALL BE SUPPLIED
IN LENGTHS OF 13'-6 1/2" OR 25'-0 1/4"



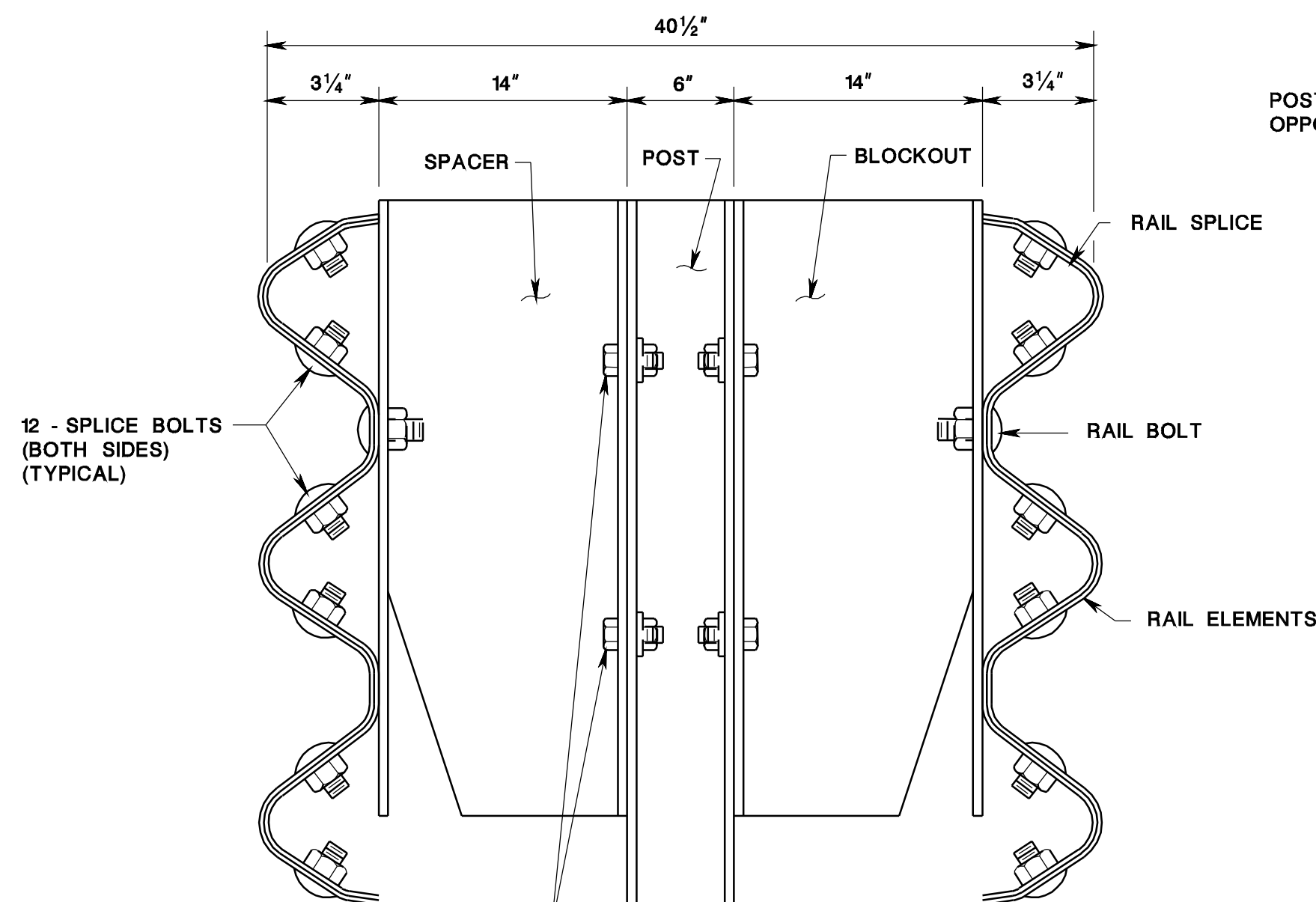
ELEVATION
THRIE BEAM RAIL SPLICE



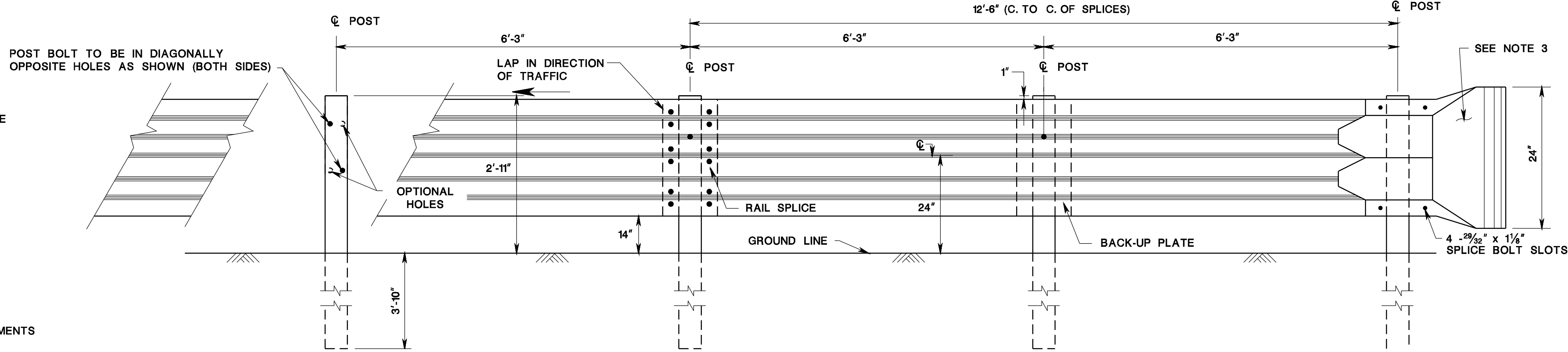
SECTION
ELEVATION
**BACK-UP PLATE AT
NON-SPLICE POSTS**



END SECTION (BUFFER)



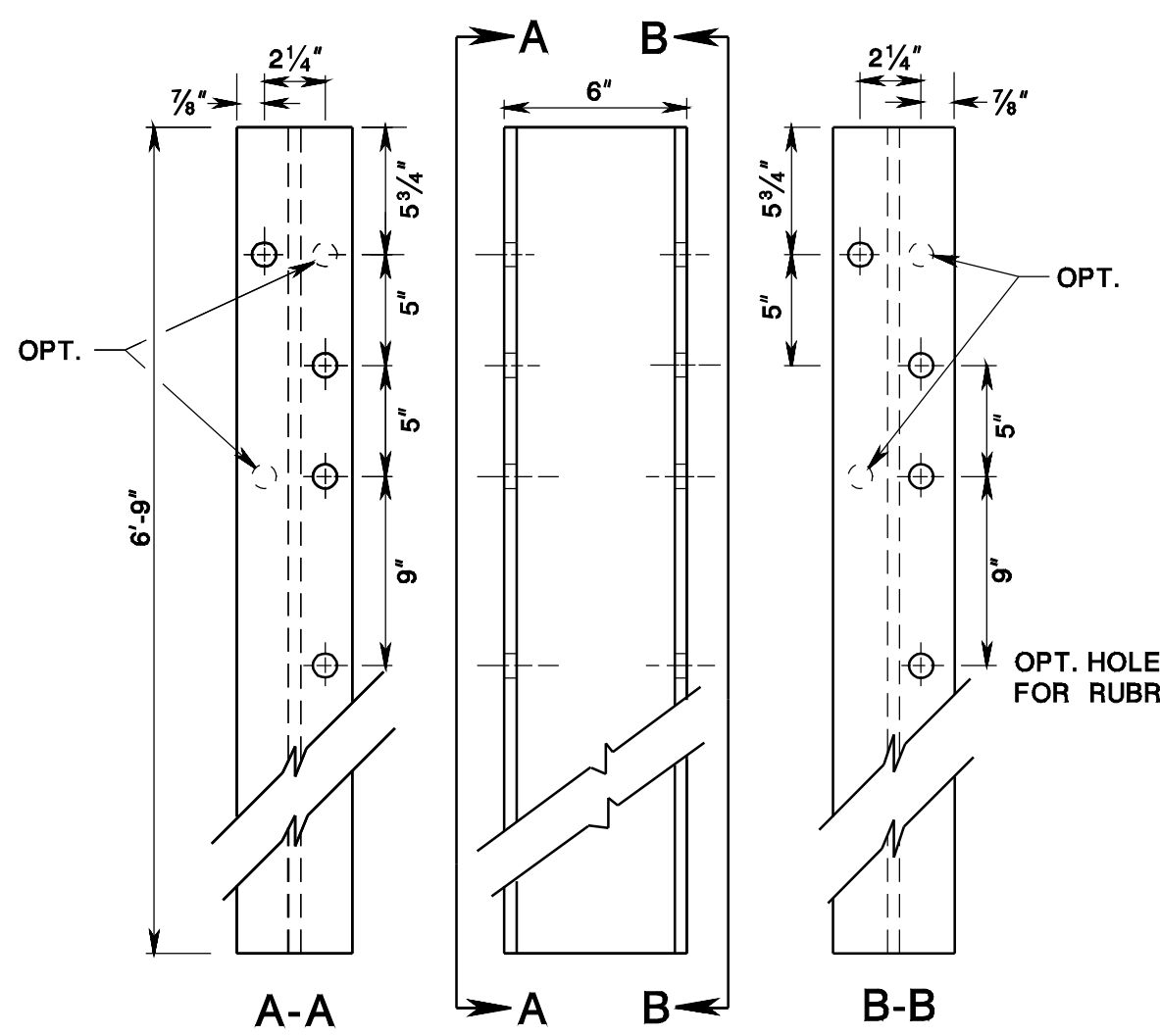
DUAL - FACED POST ASSEMBLY



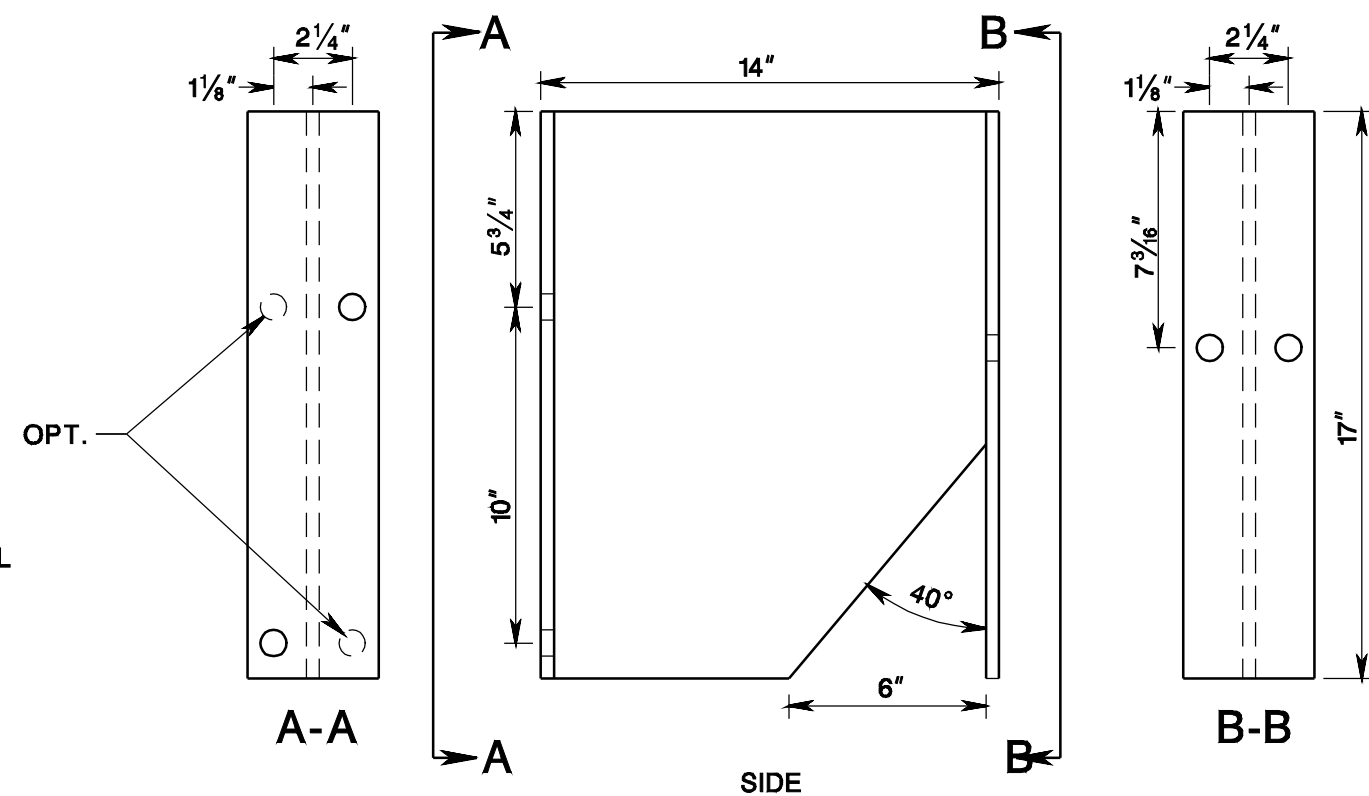
MODIFIED THRIE BEAM GUIDE RAIL, DUAL-FACED

NOTES:

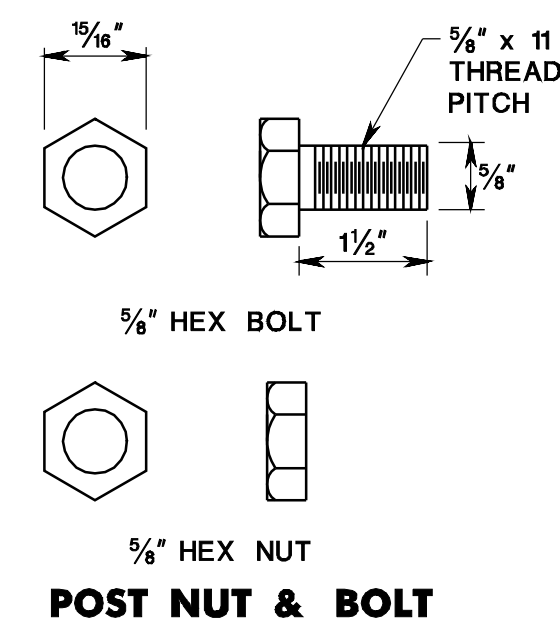
1. ALL DIMENSIONS ARE SUBJECT TO MANUFACTURING TOLERANCES
2. RAIL ELEMENTS SHALL BE FURNISHED SHOPCURVED, CONCAVE OR CONVEX, FOR RADII BETWEEN 20 FEET AND 150 FEET
3. USE END SECTION (BUFFER) UNLESS THE CONSTRUCTION PLANS CALL FOR ANOTHER TYPE OF END TREATMENT
4. USE A 25' GUIDE RAIL TRANSITION WHERE A TELESCOPING GUIDE RAIL END TREATMENT IS TO BE ATTACHED TO THE END OF MODIFIED THRIE BEAM DUAL-FACED



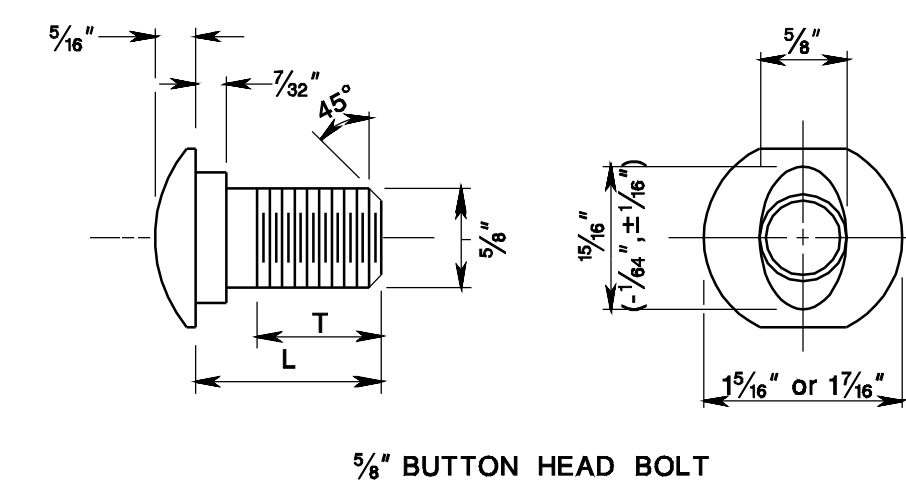
6'-9" POST
W6X9 OR W6X8.5 STRUCTURAL SHAPE



17" BLOCKOUT
M14X18 STRUCTURAL SHAPE
OR
W14X22 STRUCTURAL SHAPE

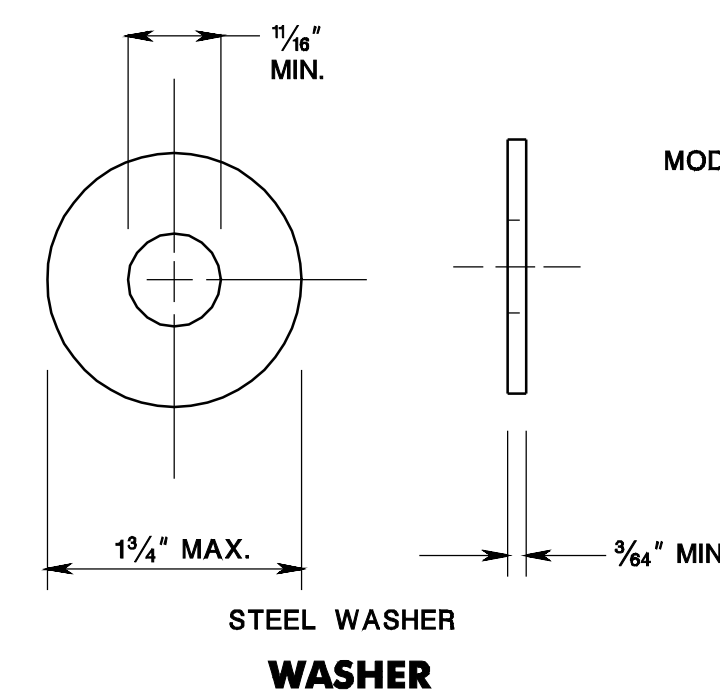


POST NUT & BOLT

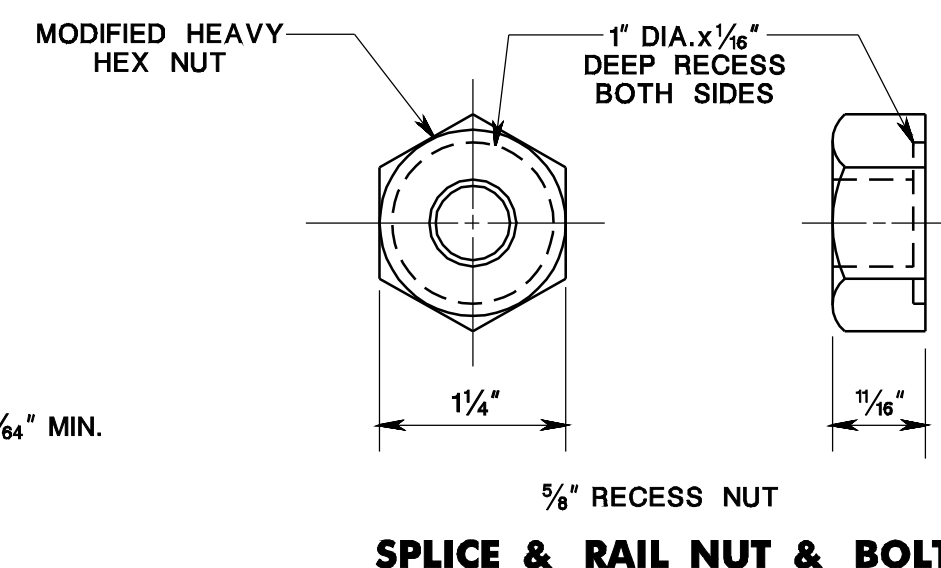


5/8" BUTTON HEAD BOLT

TYPE	L	MIN. THREAD LENGTH (T)
SPLICE	1 1/4"	FULL LENGTH THREAD
RAIL	2"	1 1/2"



STEEL WASHER
WASHER



SPLICE & RAIL NUT & BOLT

**MODIFIED THRIE
BEAM GUIDE RAIL, DUAL-FACED**
N.T.S.

NEW JERSEY DEPARTMENT OF TRANSPORTATION

CONSTRUCTION DETAILS

CD-609-18

CD-612-18.1