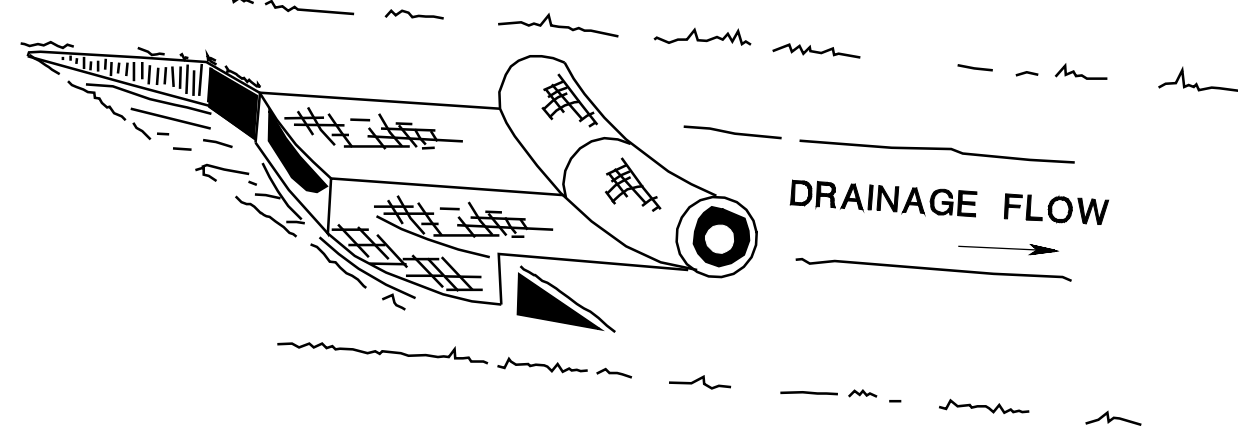
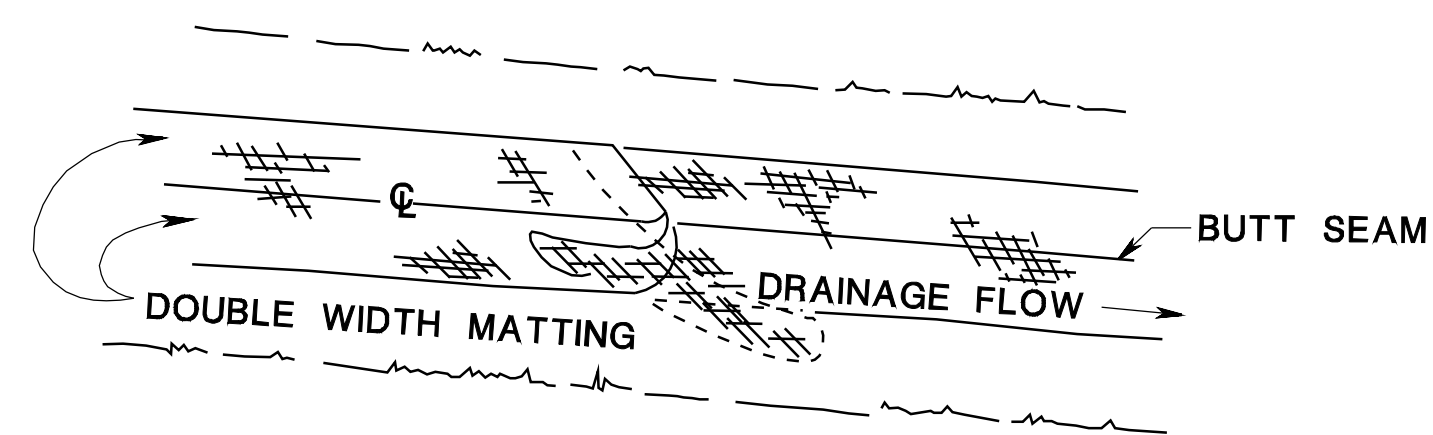


SWALE OR DITCH

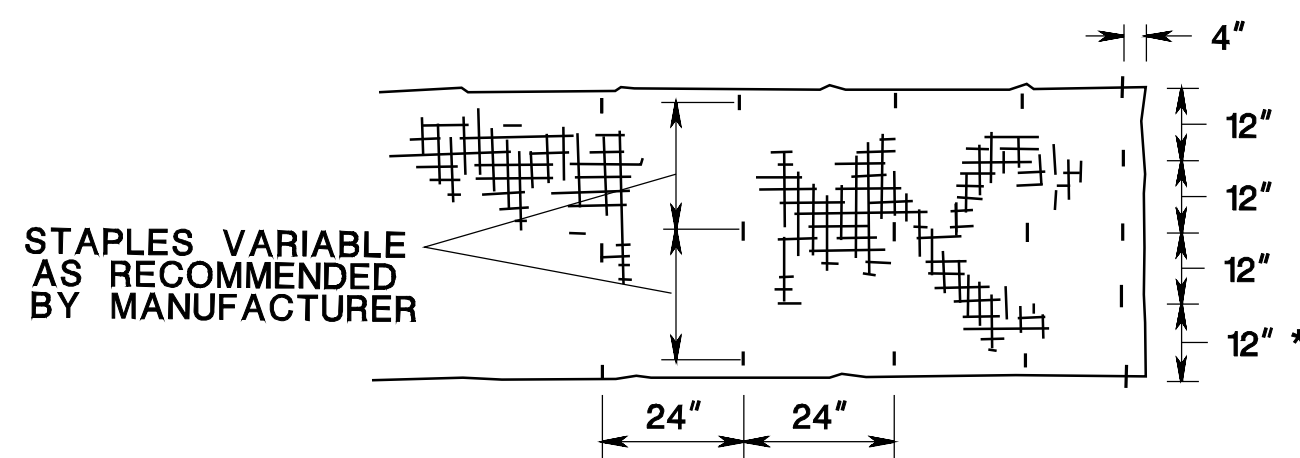
DOUBLE WIDTH MATTING AND BLANKETS IN SWALE, USE 3'-6" OVERLAP WHERE TWO OR MORE STRIPS ARE REQUIRED, AND STAPLE ON 2'-0" CENTERS



BURY TOP END OF MATTING AND BLANKETS IN A 6" TRENCH TAMP TRENCH FULL OF SOIL. SECURE WITH ROW OF STAPLES, 12" MAXIMUM SPACING 4" DOWN FROM TRENCH.

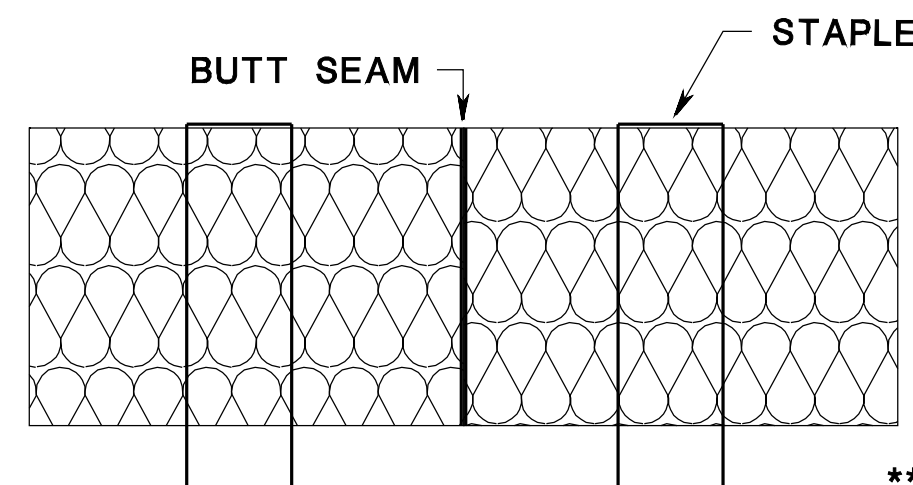


OVERLAP: BURY UPPER END OF LOWER STRIP AS PER ABOVE DETAIL. OVERLAP END OF TOP STRIP 6" AND STAPLE EITHER SIDE OF JOINT.



* DEPENDANT ON WIDTH OF PRODUCT

SECURE MATTING AND BLANKETS WITH STAPLES SPACED 24" APART ALONG THE SIDES AND DOWN THE CENTER. AT THE ENDS OF THE MATTING AND AT 50 FOOT INTERVALS STAPLES SHALL BE PLACED 12" APART ACROSS THE WIDTH.



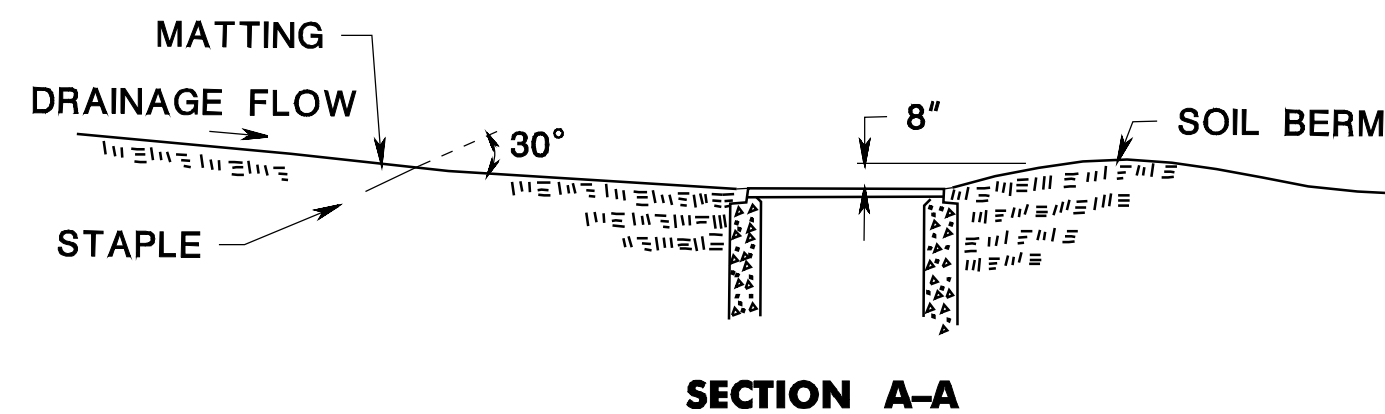
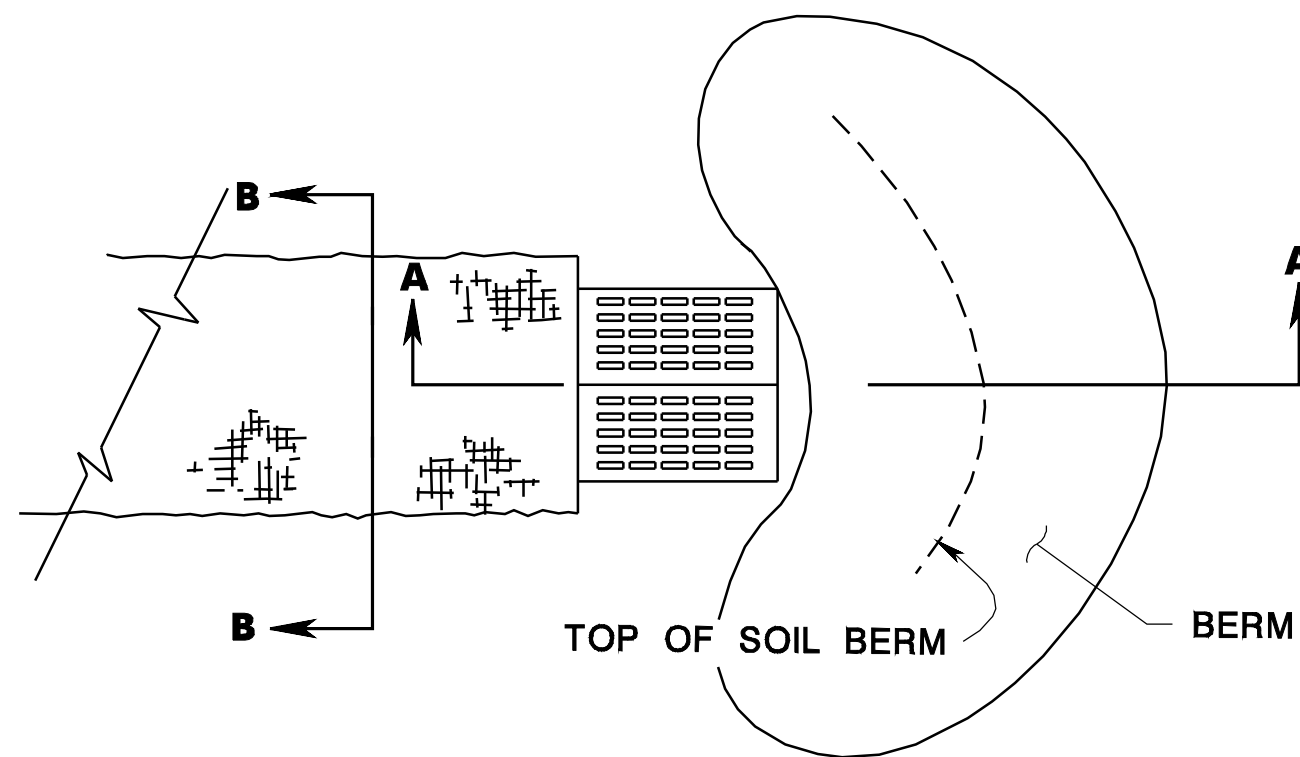
EXCELSIOR BUTT SEAM

** REFER TO SE&SC MANUAL CHAPTER 3.9 FOR WHERE THIS TREATMENT IS TO BE USED.

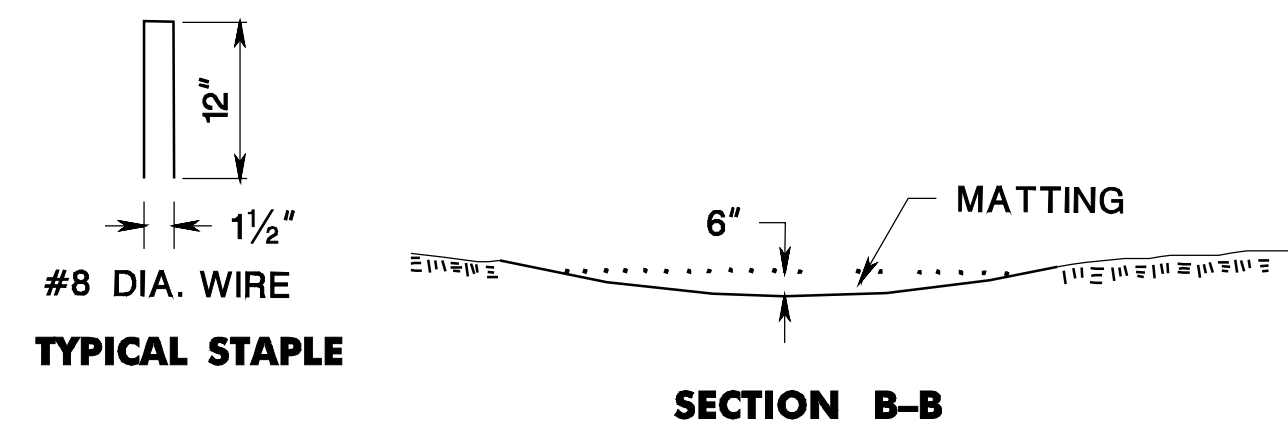
TOPSOIL STABILIZATION MATTING

CD-807-1.1

INLET AND MOUND



SECTION A-A



SECTION B-B

#8 DIA. WIRE

TYPICAL STAPLE

TOPSOIL STABILIZATION

N.T.S.

CD-807-1

NEW JERSEY DEPARTMENT OF TRANSPORTATION

CONSTRUCTION DETAILS

pen table= \\n\jdotprjws\vsystem\NJDOTWS\Projects\NJDOTEng\Plot\TBLs\Roadway\basic.tbl
scale= 30.0000000:1.0000000
date= 17-DEC-2007 09:53
ID= TPXBHAY
BDC0703-ORIGINAL SHEET