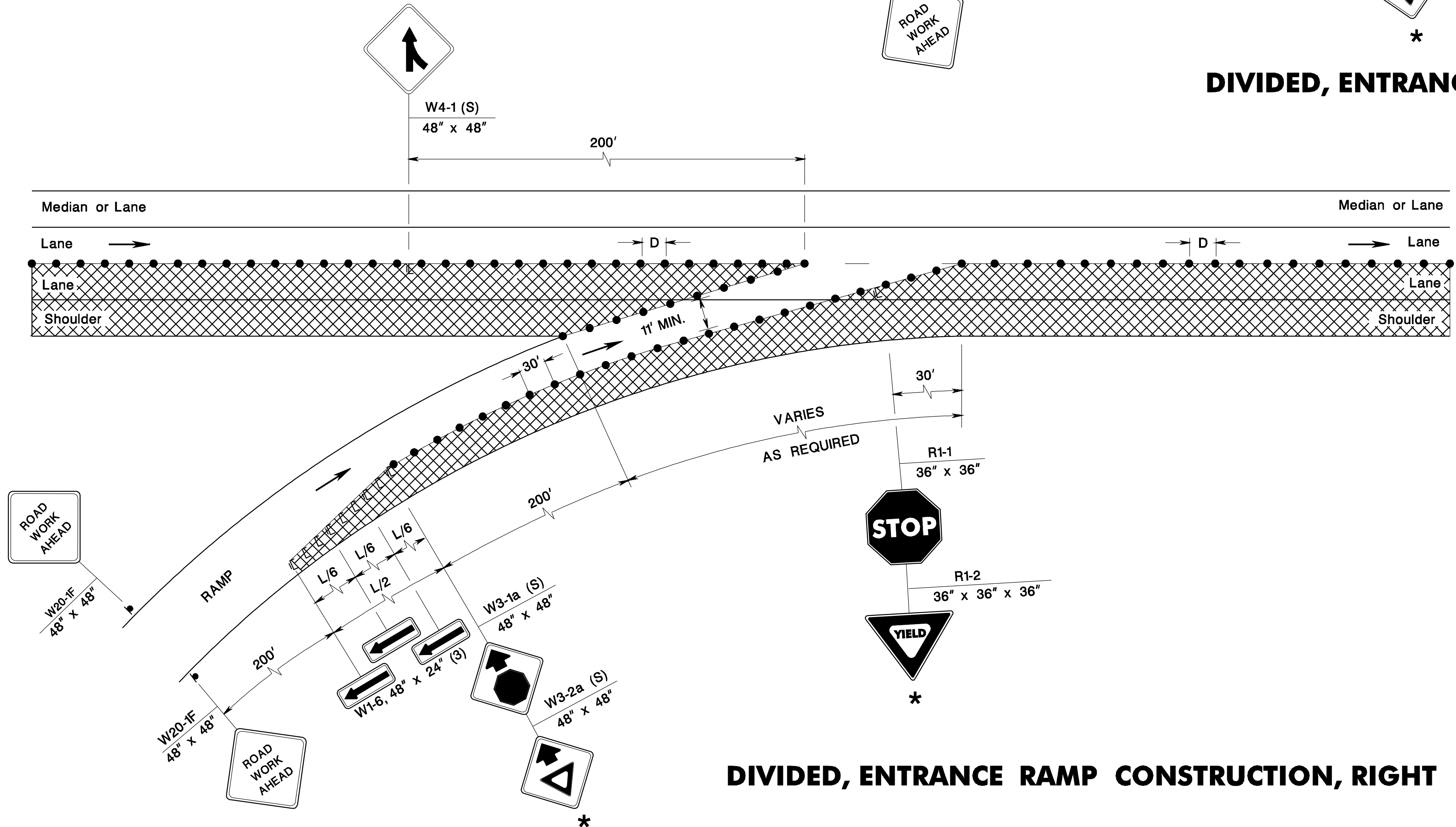


DIVIDED, ENTRANCE RAMP CONSTRUCTION, LEFT



DIVIDED, ENTRANCE RAMP CONSTRUCTION, RIGHT

* STOP SIGN OR YIELD SIGN TO BE DETERMINED BY REGIONAL TRAFFIC ENGINEER. SIGNS MUST BE LIGHT STOCK (0.024")

- NOTE:**
1. PROVIDE AN ACCELERATION LANE WHERE POSSIBLE. SEE TCD-21.
 2. SEE RECOMMENDED TAPER LENGTH AND SPACING TABLE ON SHEET TCD-2 FOR VALUES OF L, B AND D.

N.T.S.