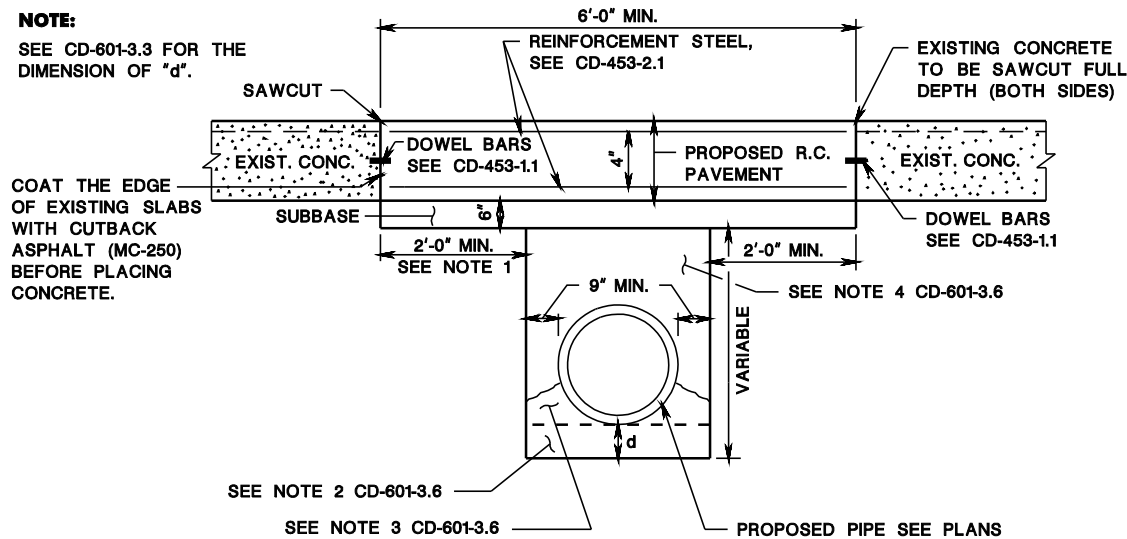


pen table=\\njdotgprtw\egsystem\tdotsw\projects\NJDOTEng\plan\TBLA\Roadway\dot.tbl
scale=62.577399:1.000000
date=12-SEP-2012 15:01
ID=TP24VTL1
file=

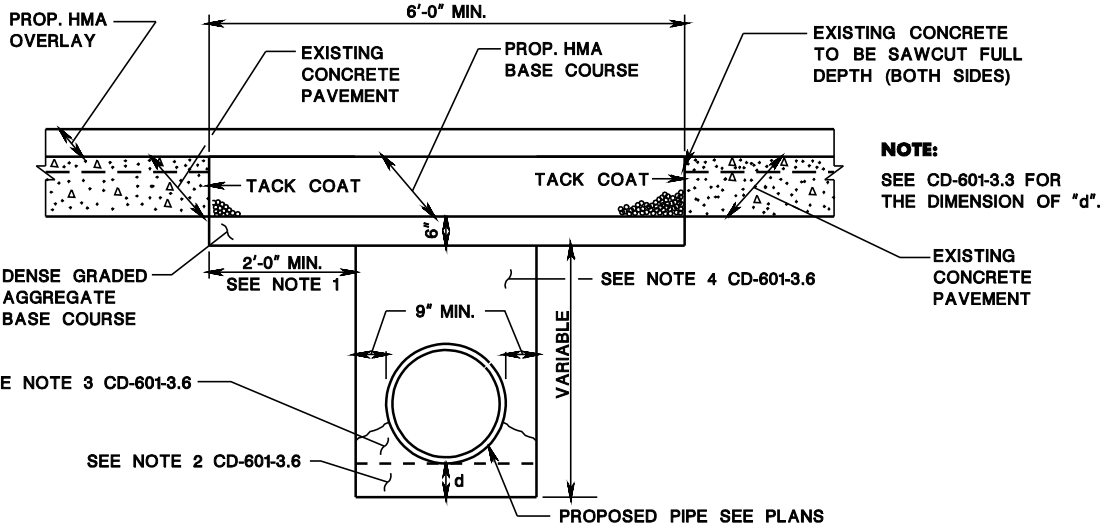
NOTE:

SEE CD-601-3.3 FOR THE DIMENSION OF "d".



**CONCRETE SURFACE COURSE
REPLACEMENT AT CROSS DRAIN OR UTILITY TRENCH**

CD-601-3.1



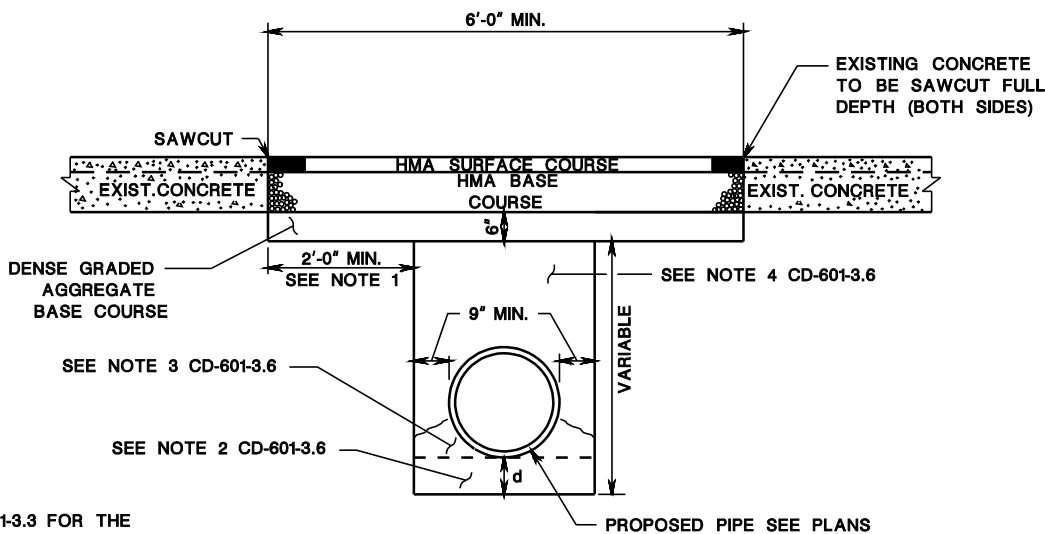
**HMA REPLACEMENT WHERE EXISTING
CONCRETE COURSE IS REMOVED AT CROSS DRAIN
OR UTILITY TRENCH WITH PROPOSED RESURFACING**

CD-601-3.2

UNDERLYING SOIL	d	
	CONC. PIPE	ALUMINUM PIPE OR HDPE PIPE
ROCK OR HARD MATERIAL	6"	12"
OTHER MATERIAL	6"	6"

**MINIMUM DEPTH OF
ADDITIONAL EXCAVATION
OR PIPE BEDDING**

CD-601-3.3

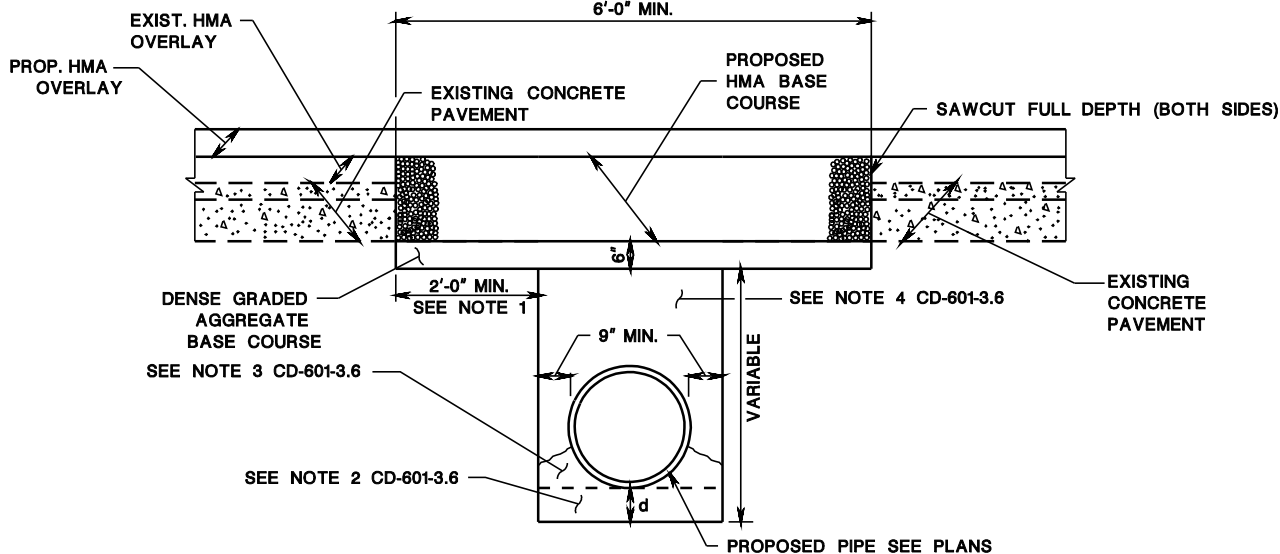


NOTE:

SEE CD-601-3.3 FOR THE DIMENSION OF "d".

**HMA REPLACEMENT WHERE CONCRETE COURSE
IS REMOVED AT CROSS DRAIN OR UTILITY TRENCH**

CD-601-3.4



NOTE:

SEE CD-601-3.3 FOR THE DIMENSION OF "d".

**HMA REPLACEMENT WHERE EXISTING
OVERLAY AND CONCRETE COURSE IS REMOVED AT
CROSS DRAIN OR UTILITY TRENCH WITH PROPOSED RESURFACING**

CD-601-3.5

NOTES:

1. SAWCUT THE EXISTING PAVEMENT A MINIMUM OF 2'-0" FROM THE SIDES OF THE PROPOSED CROSS DRAIN OR UTILITY TRENCH EXCAVATION ON BOTH SIDES.
2. ADDITIONAL EXCAVATION REQUIRED WHEN PIPE BEDDING IS DESIGNATED OR WHEN ROCK OR OTHER HARD MATERIAL IS ENCOUNTERED.
3. BACKFILL SHALL BE PLACED SO AS TO ENSURE SUFFICIENT COMPACTION UNDER PIPE HAUNCHES.
4. THE PIPE OR UTILITY TRENCH SHALL BE BACKFILLED IN ACCORDANCE WITH THE SPECIFICATIONS FOR BACKFILLING OR WITH AGGREGATE, DESIGNATION I-1, I-2, I-3, OR I-13 IF DIRECTED, WHEN SOIL AGGREGATE IS DIRECTED, THE PAY LIMITS SHALL BE A WIDTH OF A MINIMUM OF 36" OR THE OUTSIDE DIAMETER OF THE PIPE OR CULVERT PLUS 18" AND A DEPTH FROM THE BOTTOM OF THE TRENCH OR TOP OF THE DENSE GRADED AGGREGATE BASE COURSE.

CD-601-3.6

**CROSS DRAIN OR UTILITY
TRENCH CONSTRUCTION**
N.T.S.

CD-601-3

NEW JERSEY DEPARTMENT OF TRANSPORTATION

CONSTRUCTION DETAILS

REINFORCEMENT STEEL IS IN METRIC UNITS.
HMA = HOT MIX ASPHALT