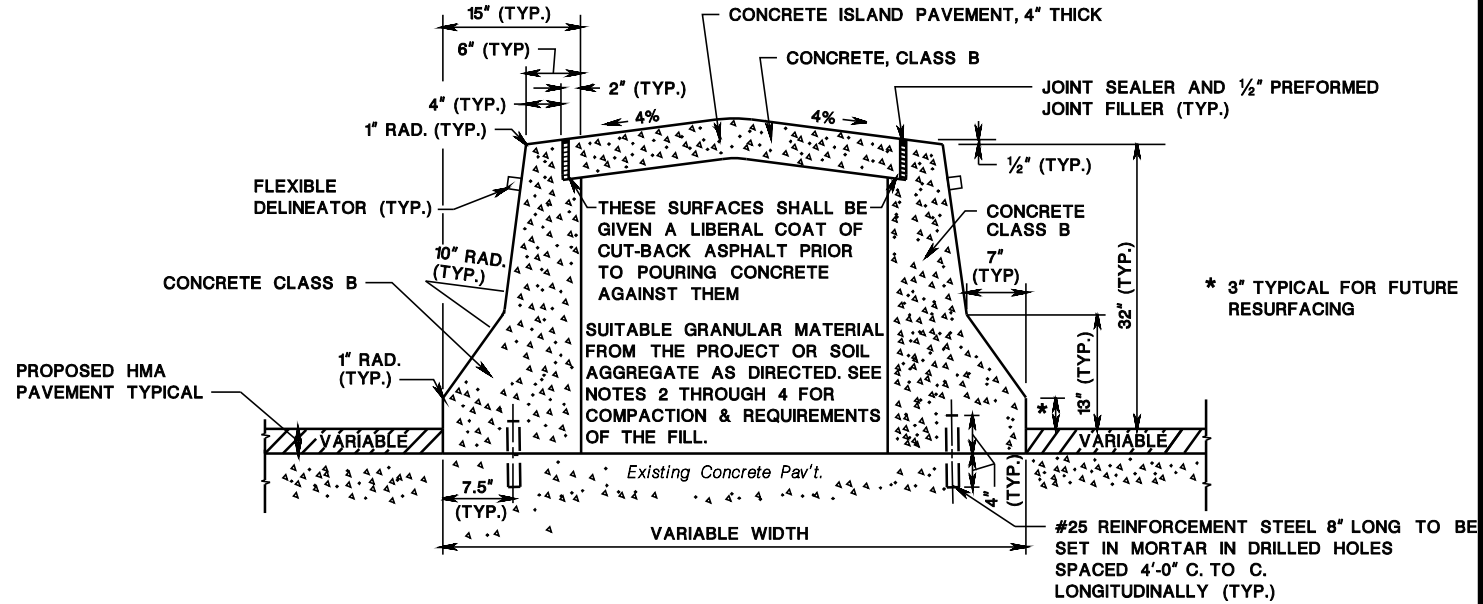
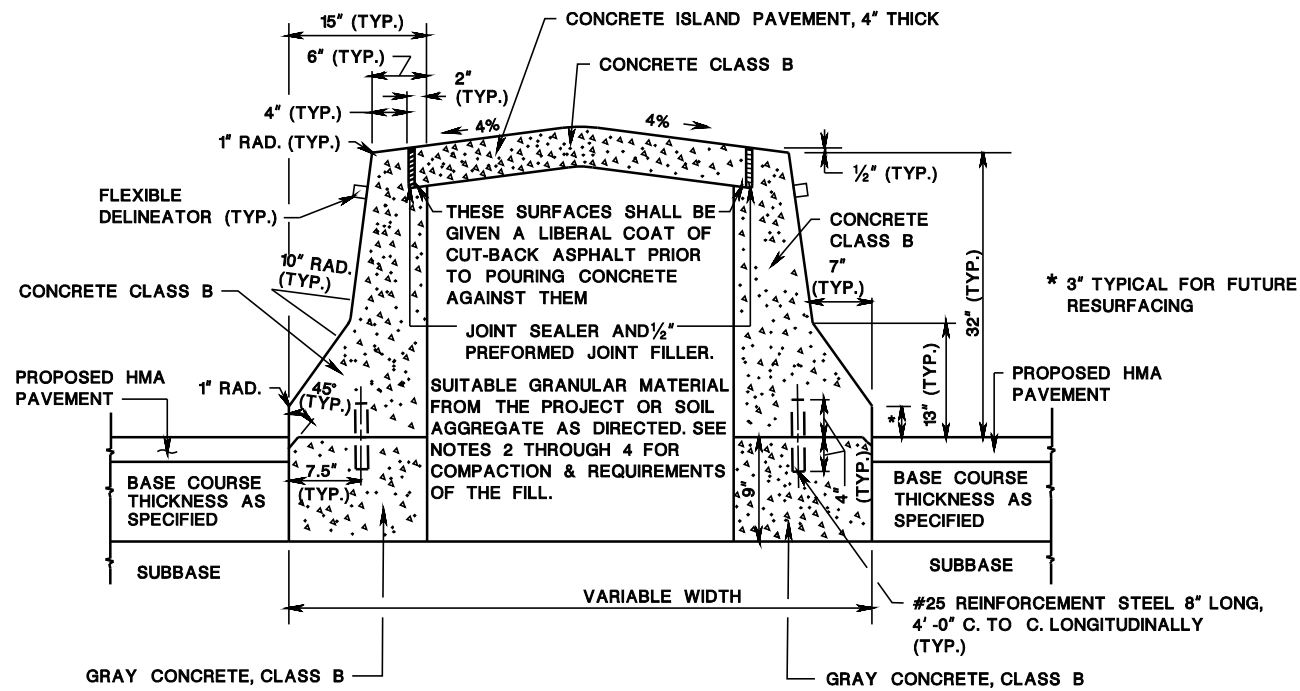


pen table= \\njdotprfw\vsystem\ndotw\projects\NJDOTSug\plot\TBLA\Roadway\dot.tbl  
scale=62.527734:1.000000  
date=12-SEP-2012 15:16  
ID=TP2VILL

BDC12D-01-ADDED SUBTITLE CD-607-2.3  
BDC08D-01-LINEAR CURB TRANSITION  
BDC07D-01-ORIGINAL SHEET



15" x VARIABLE HEIGHT CONCRETE BARRIER CURB, DOWELLED

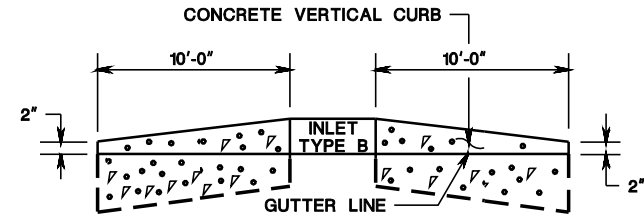


15" x 41" CONCRETE BARRIER CURB

NOTES:

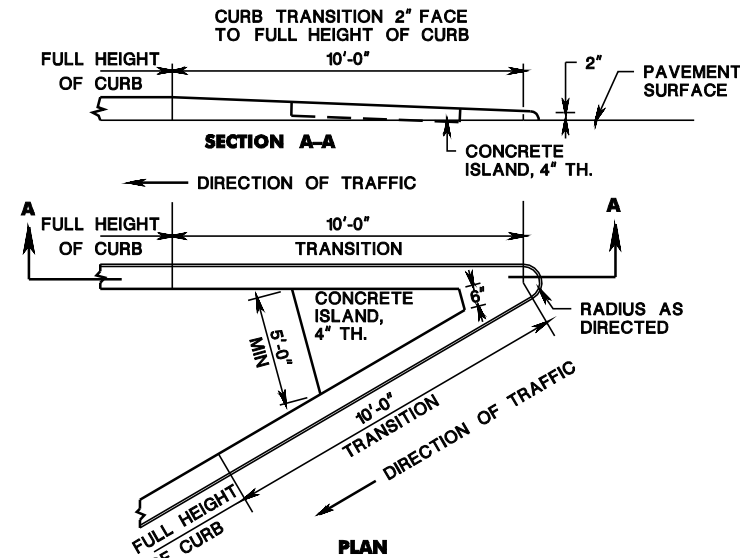
- SEE GENERAL NOTES APPLYING TO ALL BARRIER CURB CD-607-3.2.
- COMPACTION SHALL BE IN ACCORDANCE WITH THE DIRECTED METHOD OF THE NJDOT STANDARD SPECIFICATIONS AND ITS SUPPLEMENTS.
- THE FILL BETWEEN THE CURBS SHALL BE SHAPED AND COMPACTED TO A FIRM EVEN SURFACE. UNSTABLE MATERIAL SHALL BE REMOVED AND REPLACED WITH ACCEPTABLE MATERIAL WHICH SHALL BE COMPACTED.
- SOIL LIFTS SHALL BE LIMITED TO 12 INCHES AND EACH LIFT SHALL BE COMPACTED.

CD-607-2.1



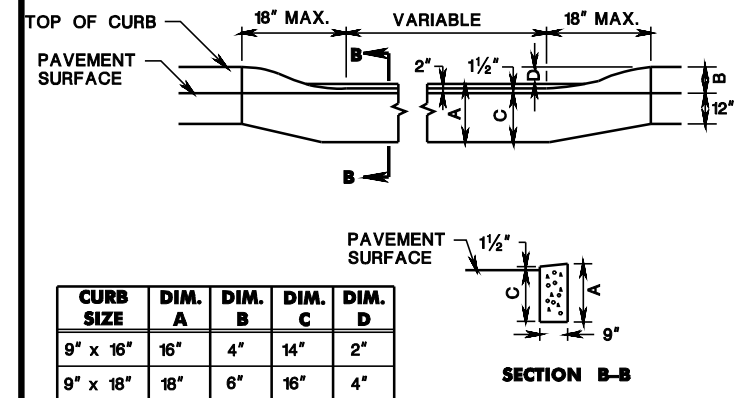
CURB TREATMENT AT BERM SECTION AND ALL CURB ENDS

CD-607-2.2



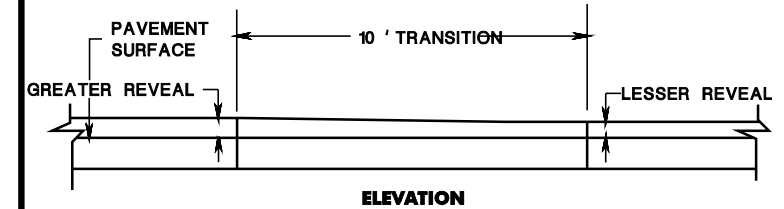
APPROACH CURBED GORE AREA TREATMENT

CD-607-2.3



METHOD OF DEPRESSING CURB AT DRIVEWAYS

CD-607-2.4



LINEAR CURB TRANSITION

CD-607-2.5

REINFORCEMENT STEEL IS IN METRIC UNITS  
HMA = HOT MIX ASPHALT

BARRIER CURB AND VERTICAL CURB

N.T.S.

CD-607-2

NEW JERSEY DEPARTMENT OF TRANSPORTATION

CONSTRUCTION DETAILS