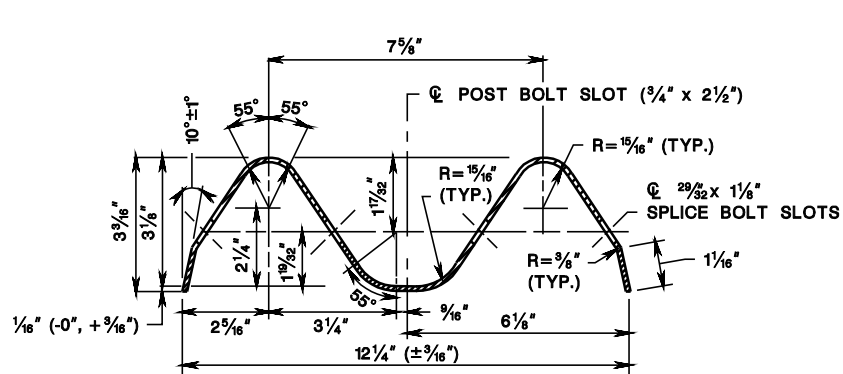
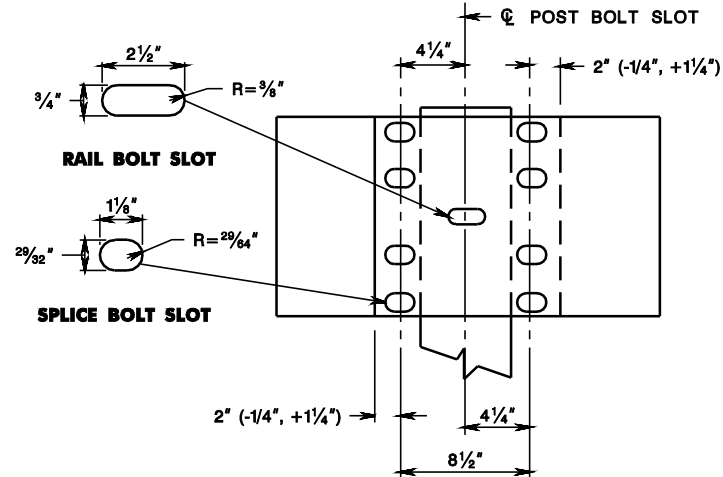


pen table=\\njdotpfrwa\paysystem\jdotwa\projects\project\TBLA\Roadway\dot.tbl
scale=62.527733:1.000000
date=07-DEC-2012 10:25
ID=TP29VILL
BDC9D-JR-RUBRAIL LOCATION
BDC9D-JR-ORIGINAL SHEET
file=

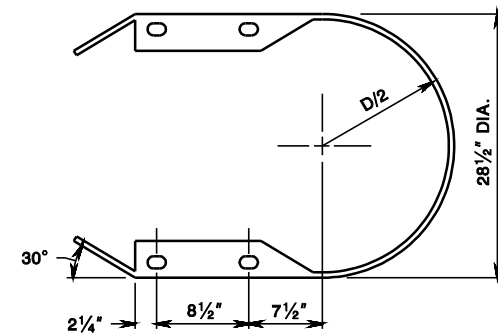


RAIL ELEMENT SHALL BE SUPPLIED IN LENGTHS OF 13'-6 1/2" OR 28'-1 1/2"

W-BEAM RAIL ELEMENT



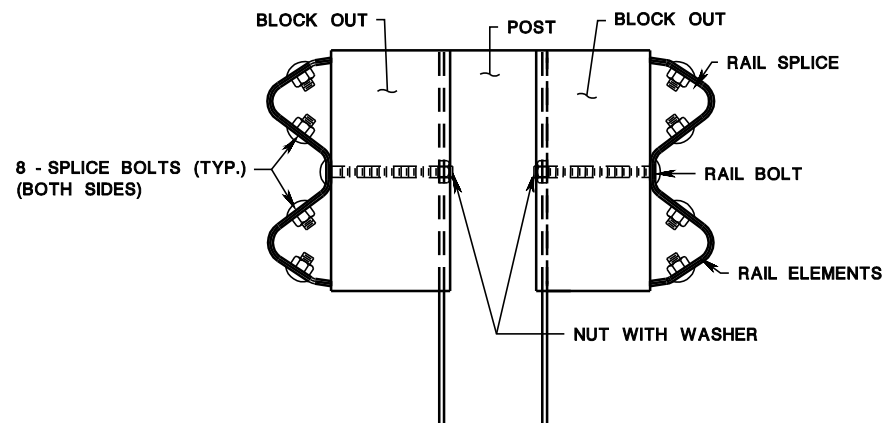
RAIL SPLICE



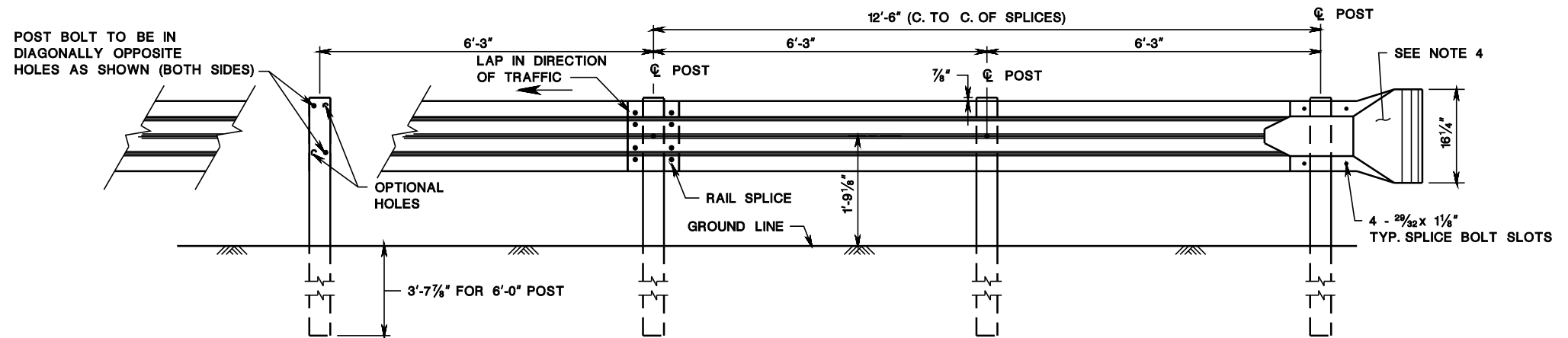
END SECTION (BUFFER)

GENERAL NOTES:

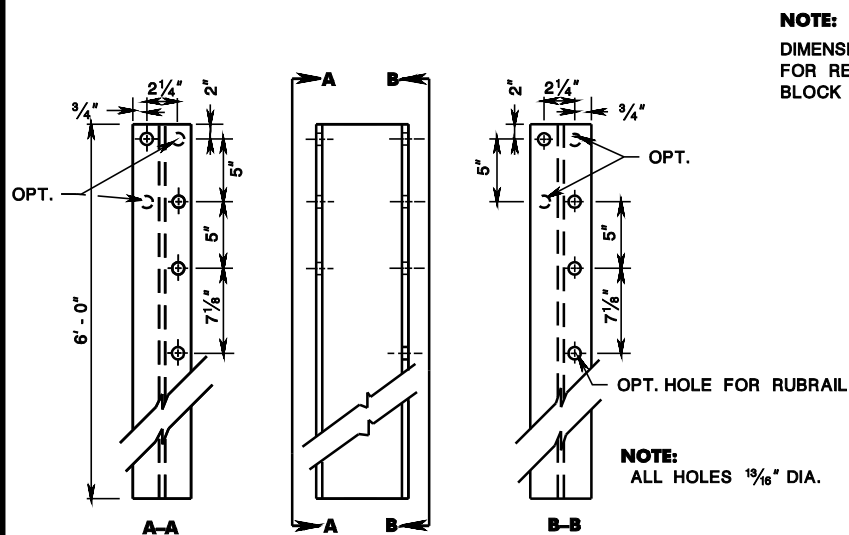
1. ALL DIMENSIONS ARE SUBJECT TO MANUFACTURING TOLERANCES.
2. RAIL ELEMENTS SHALL BE FURNISHED SHOPCURVED, CONCAVE OR CONVEX. FOR RADII BETWEEN 20 FEET AND 150 FEET.
3. THE STEEL FOR RAIL ELEMENTS AND BOLTS SHALL CONFORM TO NJDOT STANDARD SPECIFICATIONS AND IT'S AMENDMENTS.
4. USE END SECTION (BUFFER) UNLESS THE CONSTRUCTION PLANS CALL FOR ANOTHER TYPE OF END TREATMENT.



POST ASSEMBLY, DUAL-FACED

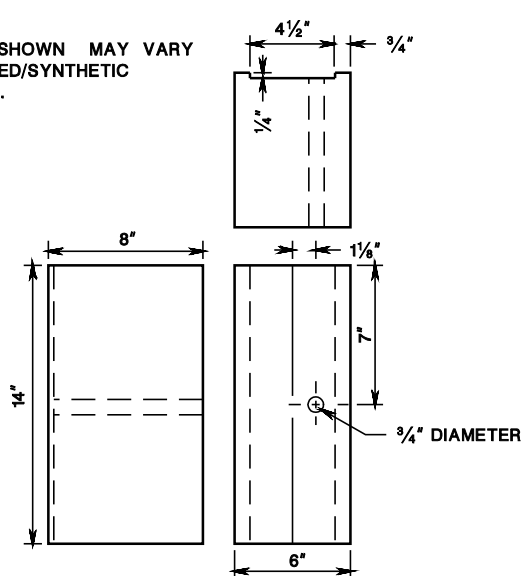


BEAM GUIDE RAIL, DUAL-FACED



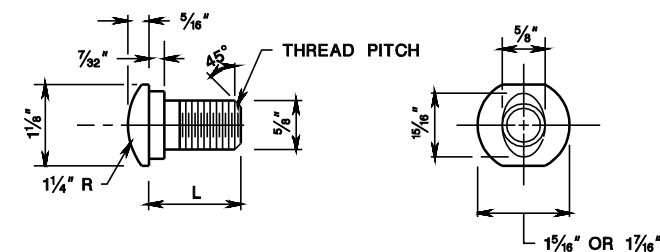
W6 x 8.5 OR W6 x 9 STEEL POST

6' POST



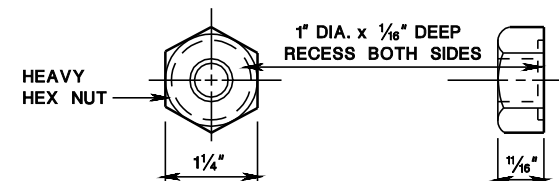
APPROVED RECYCLED/ SYNTHETIC MATERIALS

14" BLOCK OUT



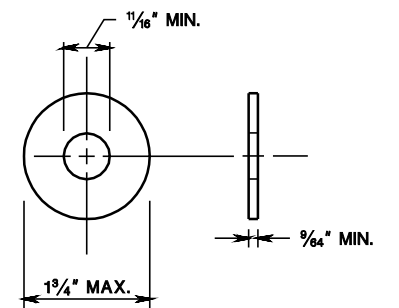
5/8" DIA. BUTTON HEAD BOLT

TYPE	L	MIN. THREAD LENGTH
SPLICE	1 1/4"	FULL LENGTH THREAD
RAIL	9 1/2"	1 3/4"



5/8" DIA. RECESS NUT

SPLICE & RAIL NUT & BOLT



STEEL WASHER

BEAM GUIDE RAIL, DUAL-FACED

N.T.S.

NEW JERSEY DEPARTMENT OF TRANSPORTATION

CONSTRUCTION DETAILS

CD-609-2.1