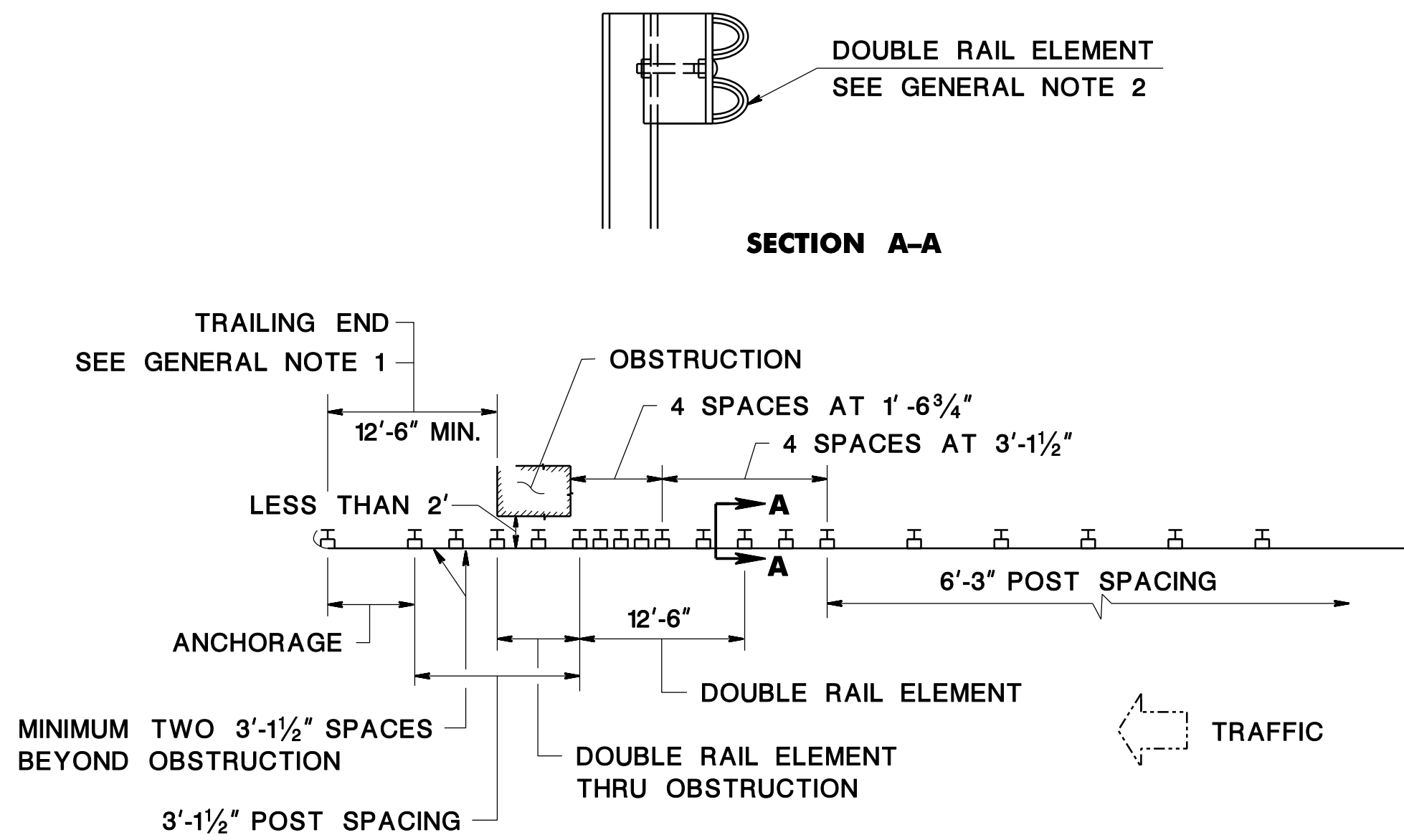
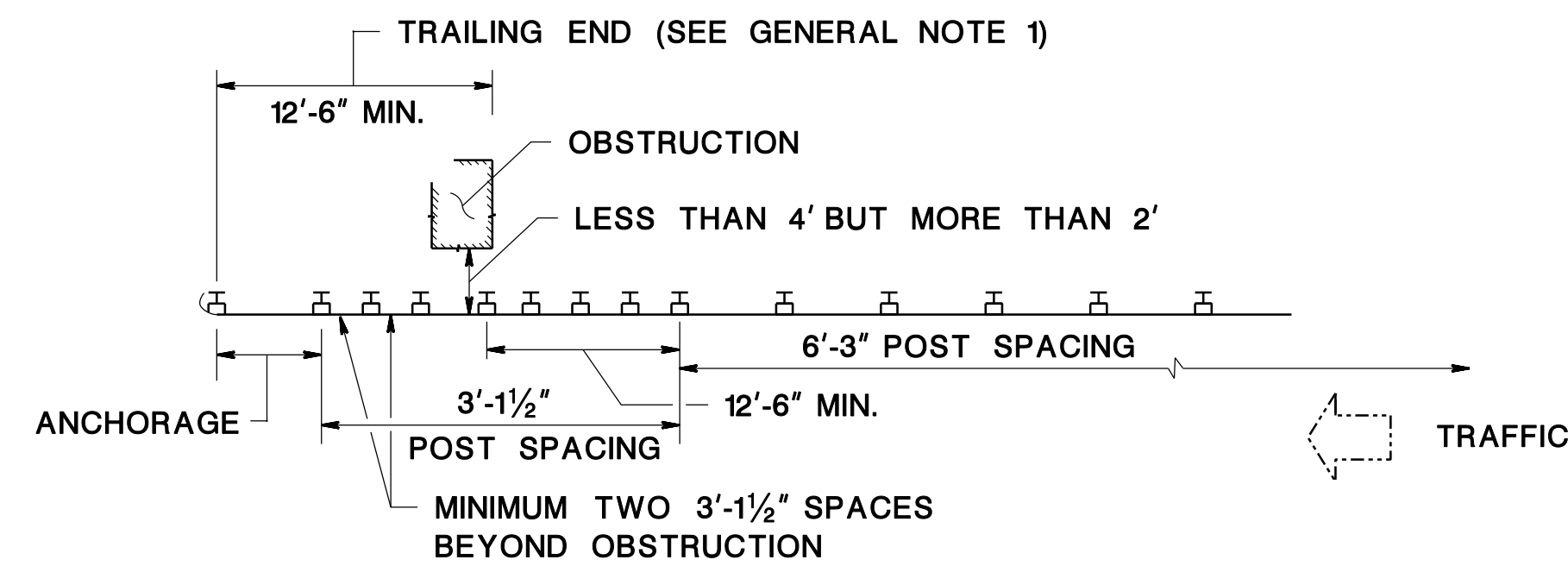


BDC90D-02: GUIDE RAIL FOR CUTS DETAIL HAS BEEN UPDATED AND TRANSFERRED TO NEW CD-609-8A.1
BDC90D-01 - ORIGINAL SHEET



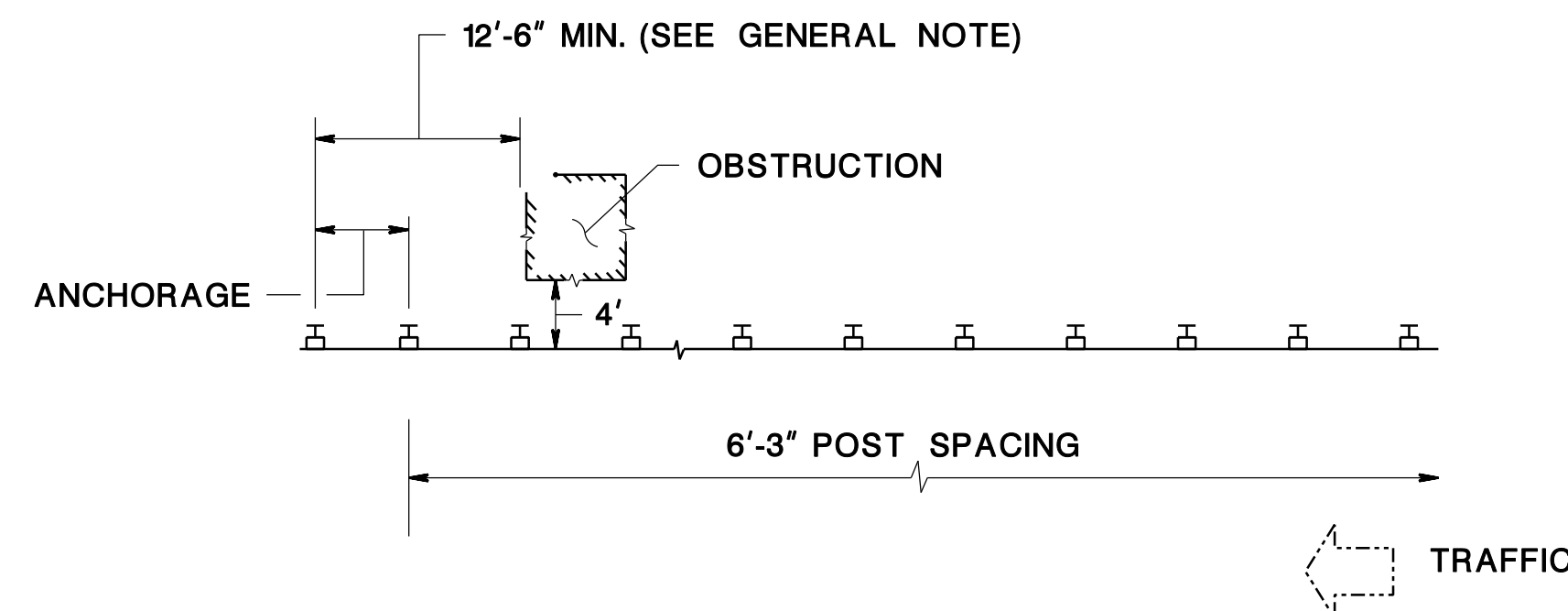
WHERE CLEARANCE FROM BACK OF RAIL TO OBSTRUCTION IS LESS THAN 2'

CD-609-8.1



WHERE CLEARANCE FROM BACK OF RAIL TO OBSTRUCTION IS MORE THAN 2' BUT LESS THAN 4'

CD-609-8.2



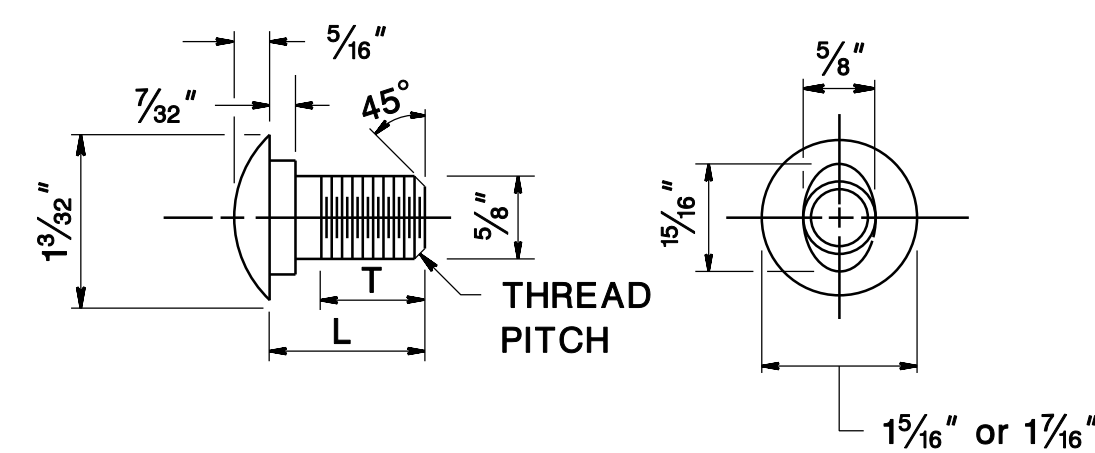
WHERE CLEARANCE FROM BACK OF RAIL TO OBSTRUCTION IS 4' OR GREATER

CD-609-8.3

IF LESS THAN 2'	
SLOPES	ADDITIONAL POST LENGTH FEET
FLATTER THAN 6H:1V	NO CHANGE
6H:1V TO 4H:1V	1'
3H:1V TO 2H:1V	2'
STEEPER THAN 2H:1V	4'

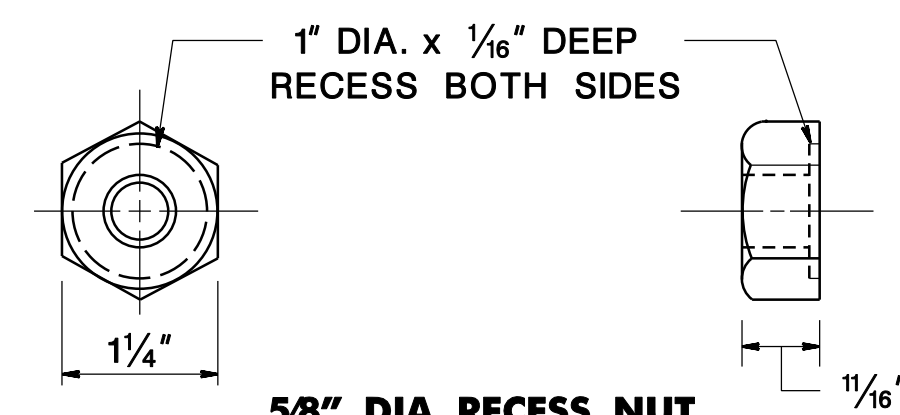
**ADDITIONAL LENGTH
BEAM GUIDE RAIL POSTS**

CD-609-8.4

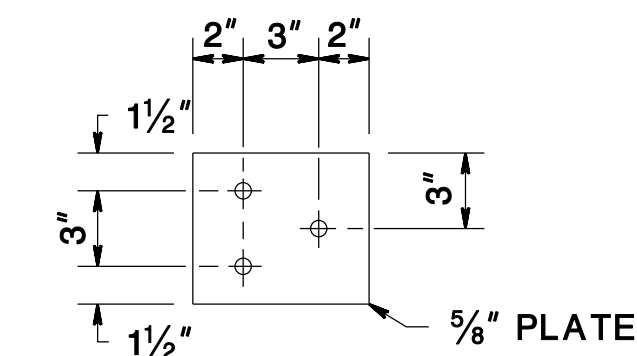


5/8" BUTTON HEAD BOLT

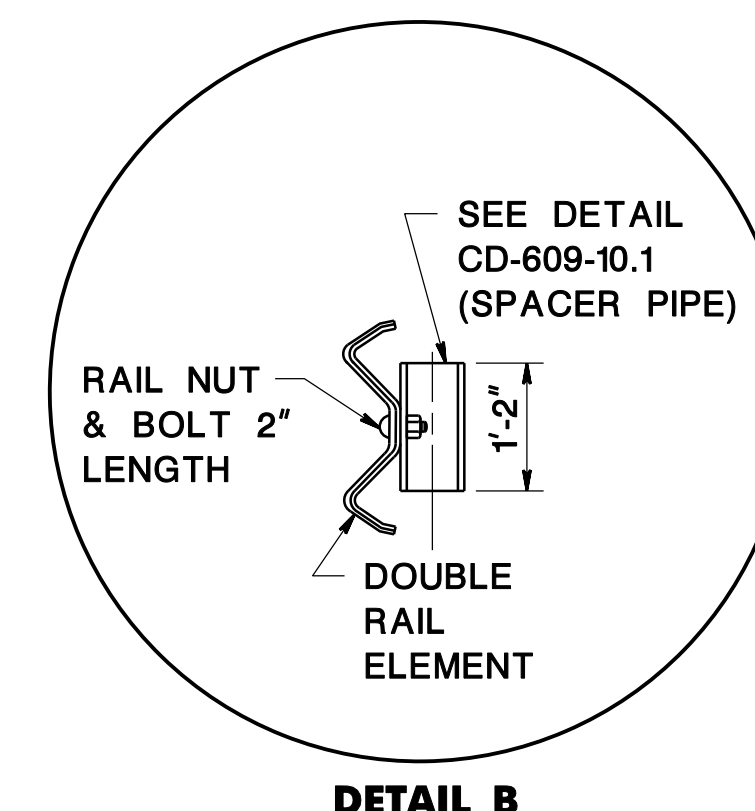
TYPE	L	MIN. THREAD LENGTH
SPLICE	1 5/8"	1 3/16"
RAIL	2"	1 1/2"



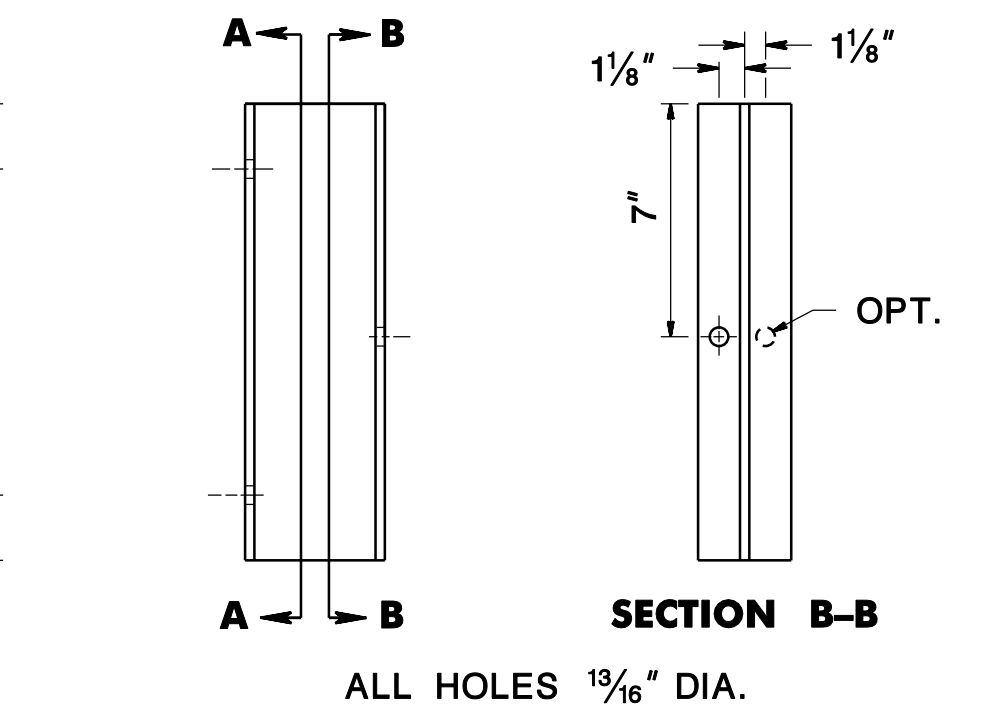
**5/8" DIA. RECESS NUT
SPLICE & RAIL NUT & BOLT**



**RUB RAIL
BACK UP PLATE**

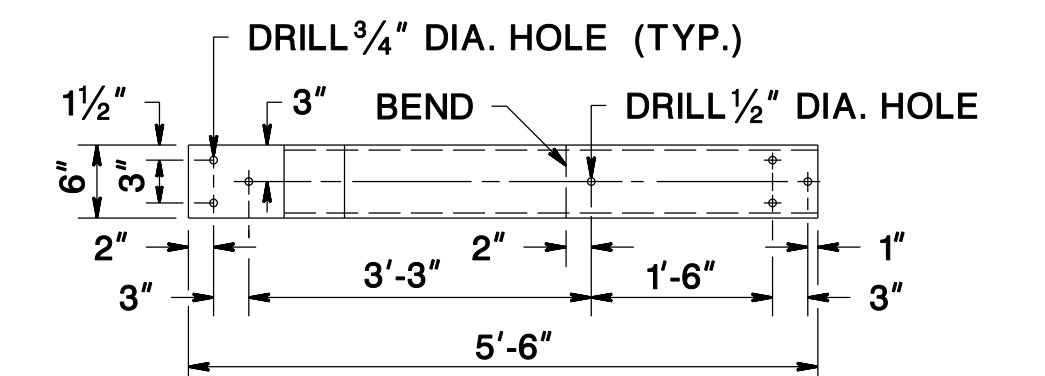
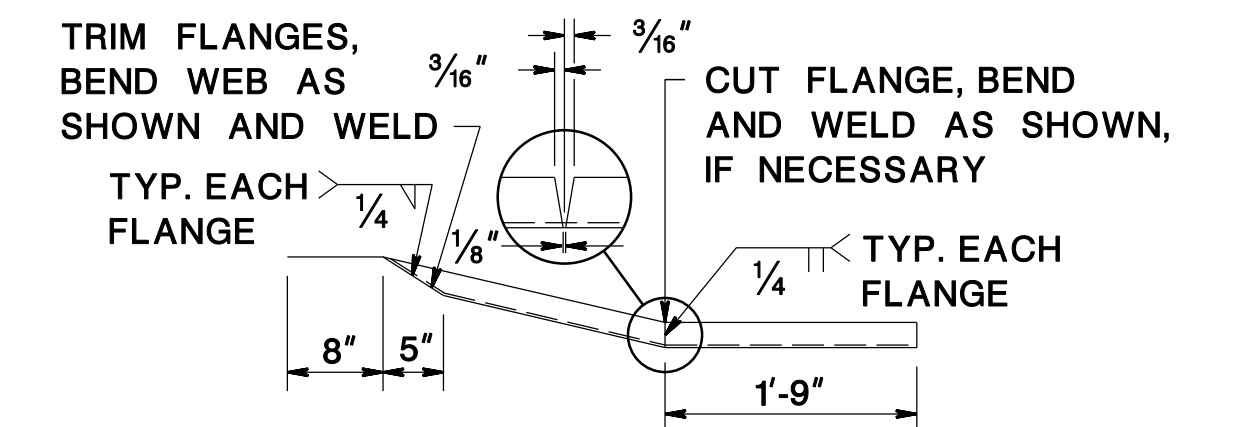


DETAIL B



6" x 4" STEEL I 8.5# OR 9#

14" SPACER



**DETAIL A
C6 x 8.2 RUB RAIL**

GENERAL NOTES

- WHERE A CRASHWORTHY END TREATMENT IS SHOWN AT THE TRAILING END ON THE PLANS, THE POST SPACING AND DOUBLE RAIL ELEMENT FOR THE GUIDE RAIL SHALL BE THE SAME AS THE APPROACH END.
- WHERE DOUBLE RAIL ELEMENT IS REQUIRED, THE ADDITIONAL RAIL ELEMENT SHOULD BE ADDED BEHIND THE CONTINUOUS FRONT RAIL.

CD-609-8.6

BEAM GUIDE RAIL END TREATMENT

N.T.S.

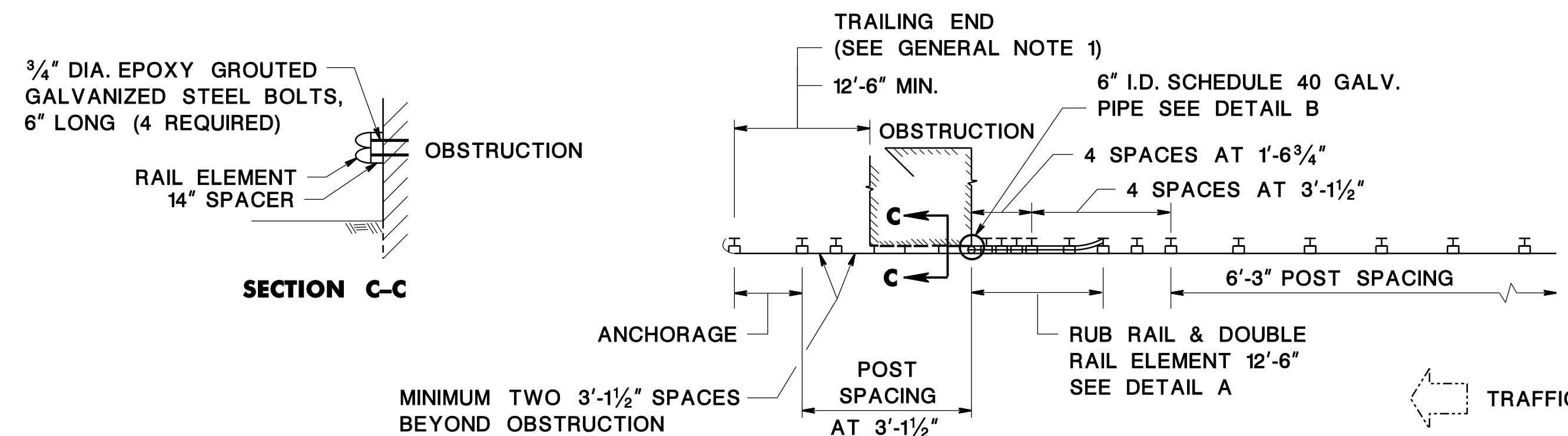
CD-609-8

NEW JERSEY DEPARTMENT OF TRANSPORTATION

CONSTRUCTION DETAILS

WHERE RAIL ELEMENT WITH SPACER IS ATTACHED TO OBSTRUCTION

CD-609-8.5



SECTION C-C