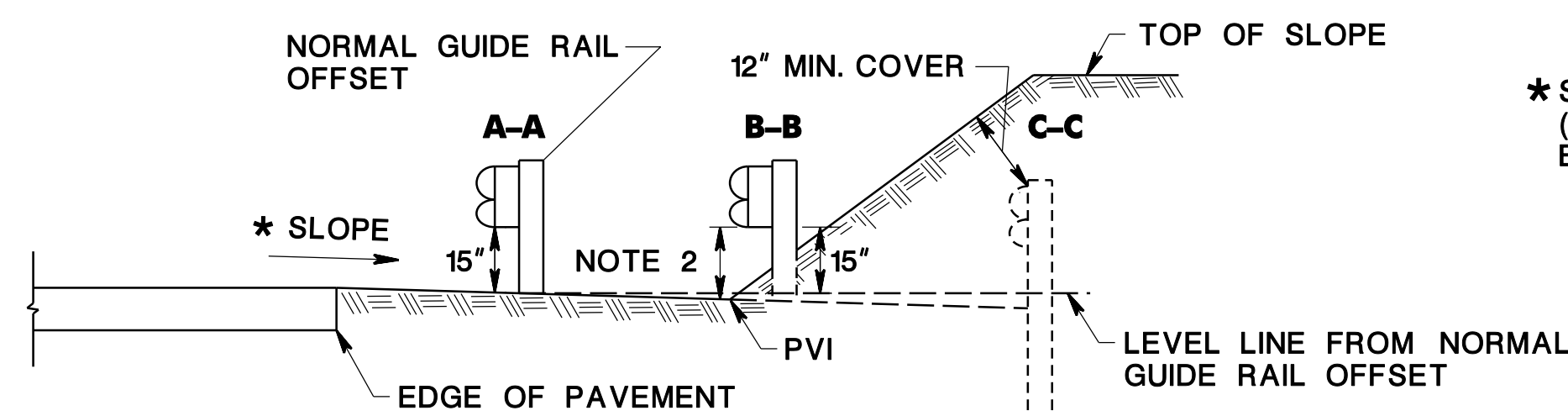
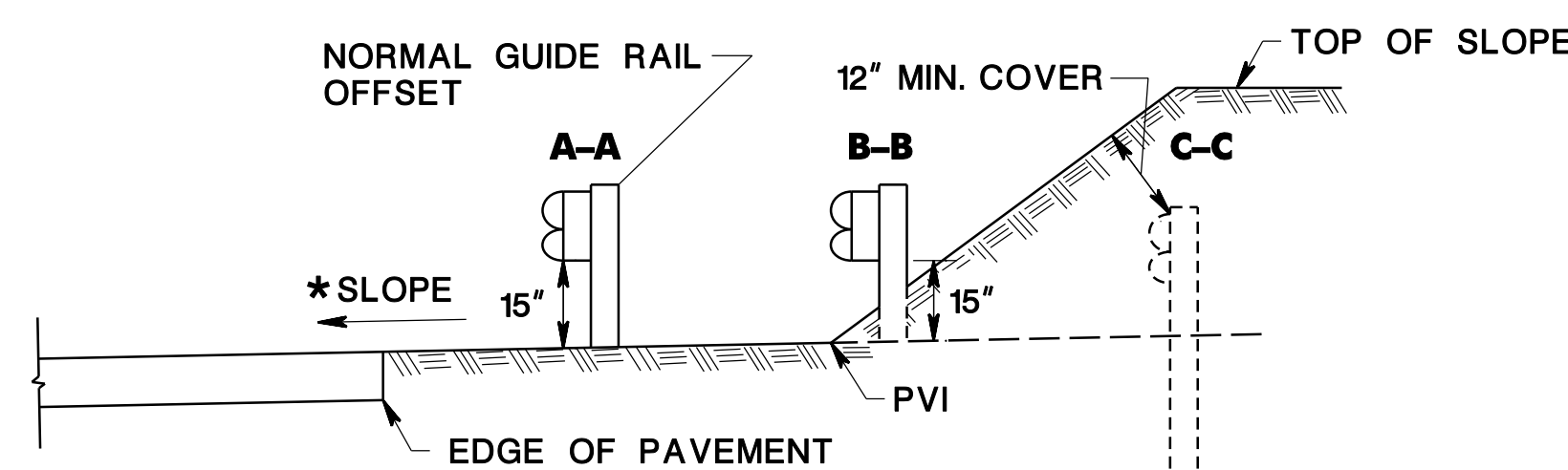


**FORESLOPE GRADED AWAY FROM SHOULDER - ELEVATION VIEW**



**FORESLOPE GRADED AWAY FROM SHOULDER - SECTION VIEW**

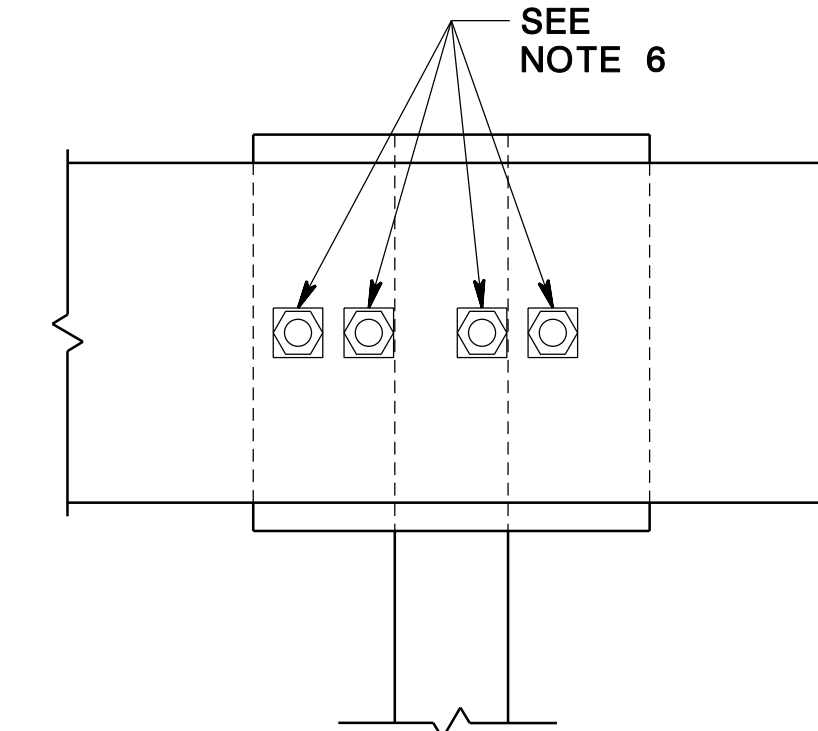
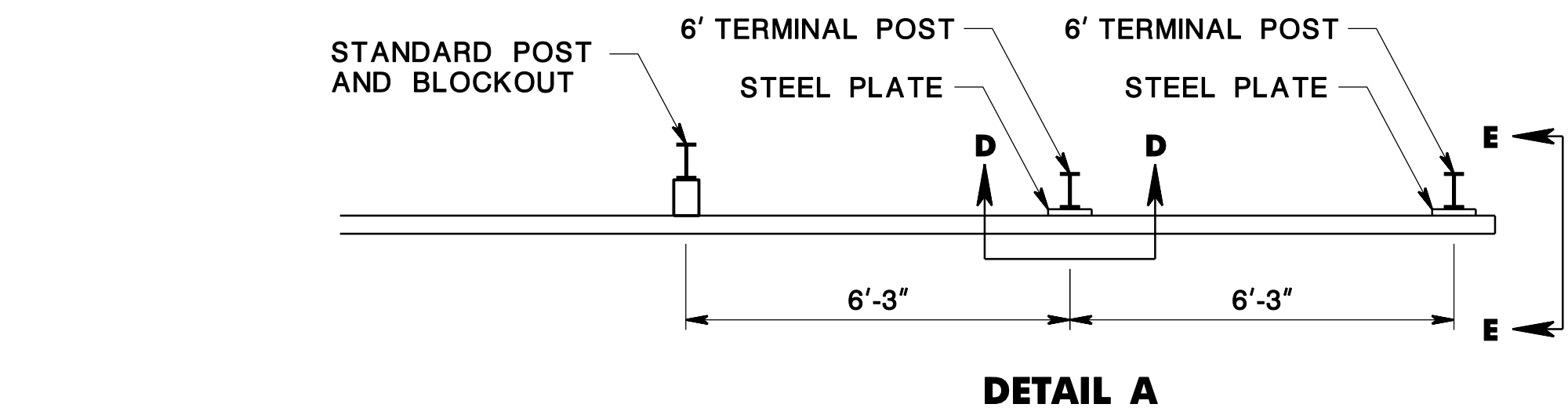


**FORESLOPE GRADED TOWARD SHOULDER - SECTION VIEW**

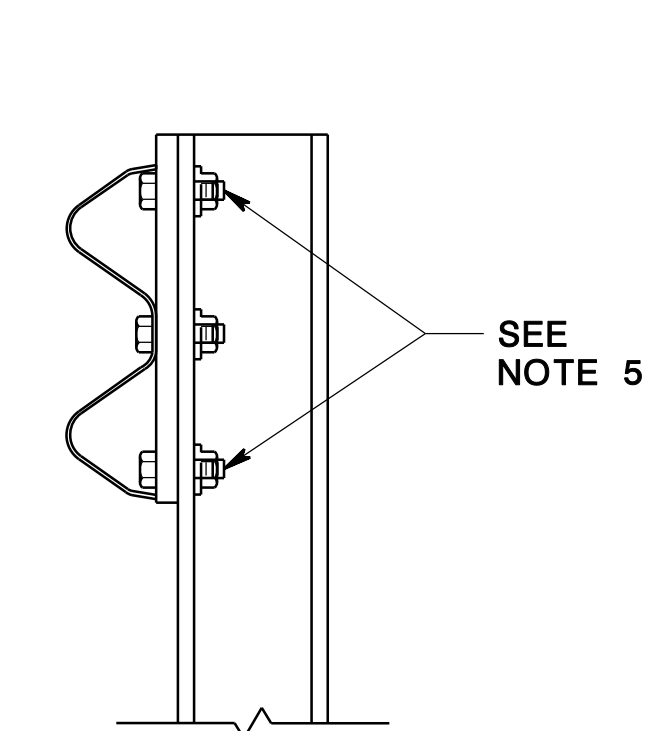
\*SLOPE AS SHOWN ON PLANS.  
(THE SLOPE ON APPROACH SHOULD  
BE NO GREATER THAN 4:1).

**NOTES:**

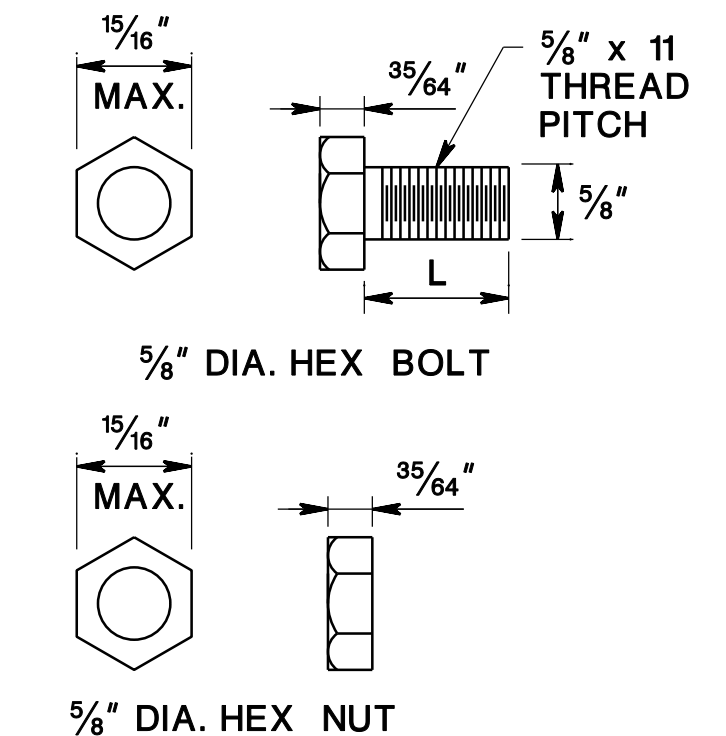
1. TOP OF GUIDE RAIL SHALL BE PARALLEL TO ROADWAY GRADE WHERE FORESLOPE IS GRADED AWAY FROM SHOULDER.
2. WHEN CLEARANCE FROM BOTTOM OF RAIL TO GROUND EXCEEDS 18", ADD RUBRAIL AND 8' LONG POSTS.
3. TAPER GUIDE RAIL HEIGHT TO PROVIDE 1' MINIMUM COVER AT LAST POST.
4. FLARE AS SHOWN ON CONSTRUCTION PLAN.
5. ATTACH STEEL PLATE TO POST WITH FOUR -  $\frac{5}{8}$ " x  $1\frac{1}{2}$ " LONG HEXHEAD BOLTS W/HEXHEAD NUTS.
6. ATTACH RAIL TO STEEL PLATE WITH FOUR -  $\frac{5}{8}$ " x 2" LONG HEX BOLTS W/SQUARE WASHER AND NUT.
7. DRILL 3 - 1" DIA. HOLES IN BEAM GUIDE RAIL.
8. PAY LIMIT FOR BURIED GUIDE RAIL TERMINAL. PAYMENT FOR ITEM BURIED GUIDE RAIL TERMINAL SHALL INCLUDE POSTS, RAIL ELEMENTS, STEEL PLATES, BLOCKOUTS, EXCAVATION AND BACKFILL.



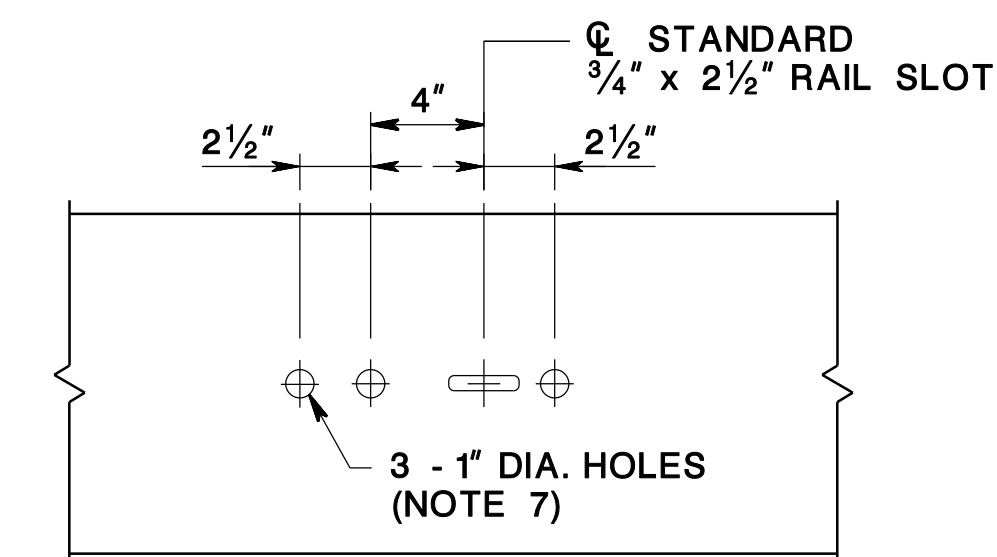
**SECTION D-D**



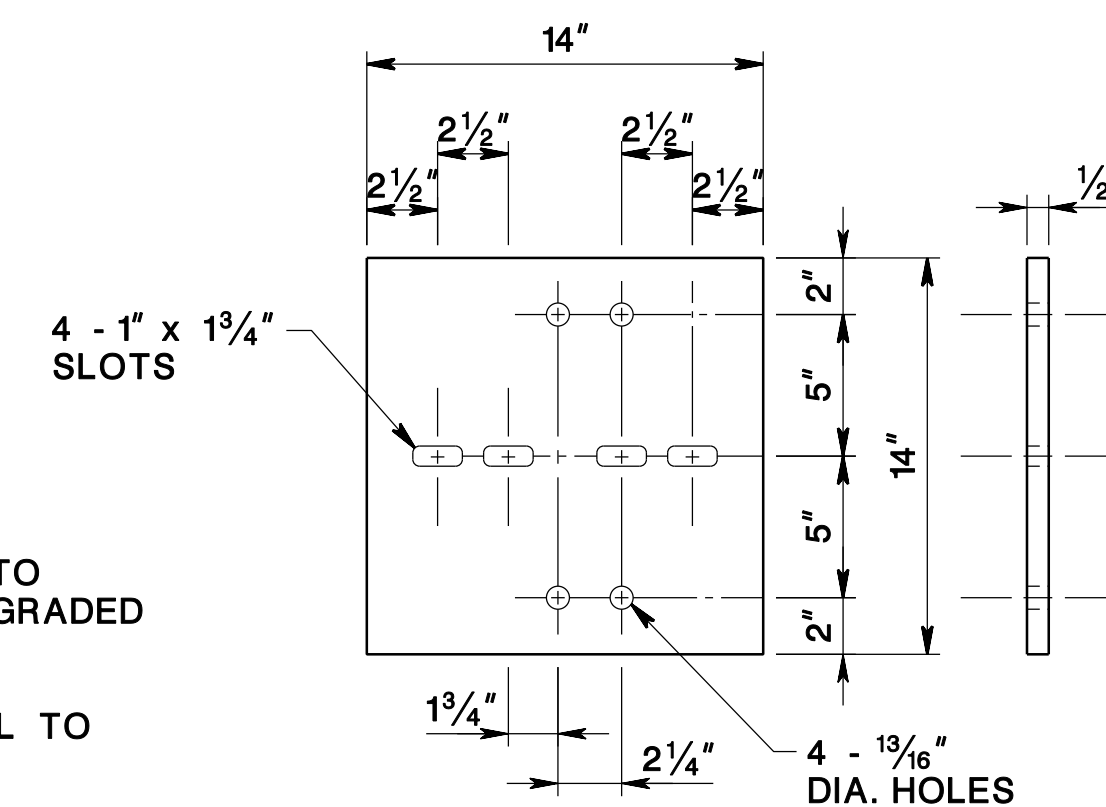
**SECTION E-E**



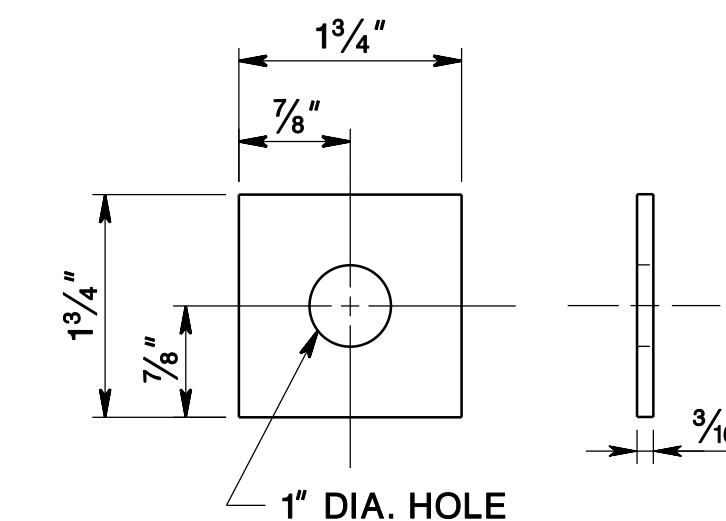
**NUT & BOLT**



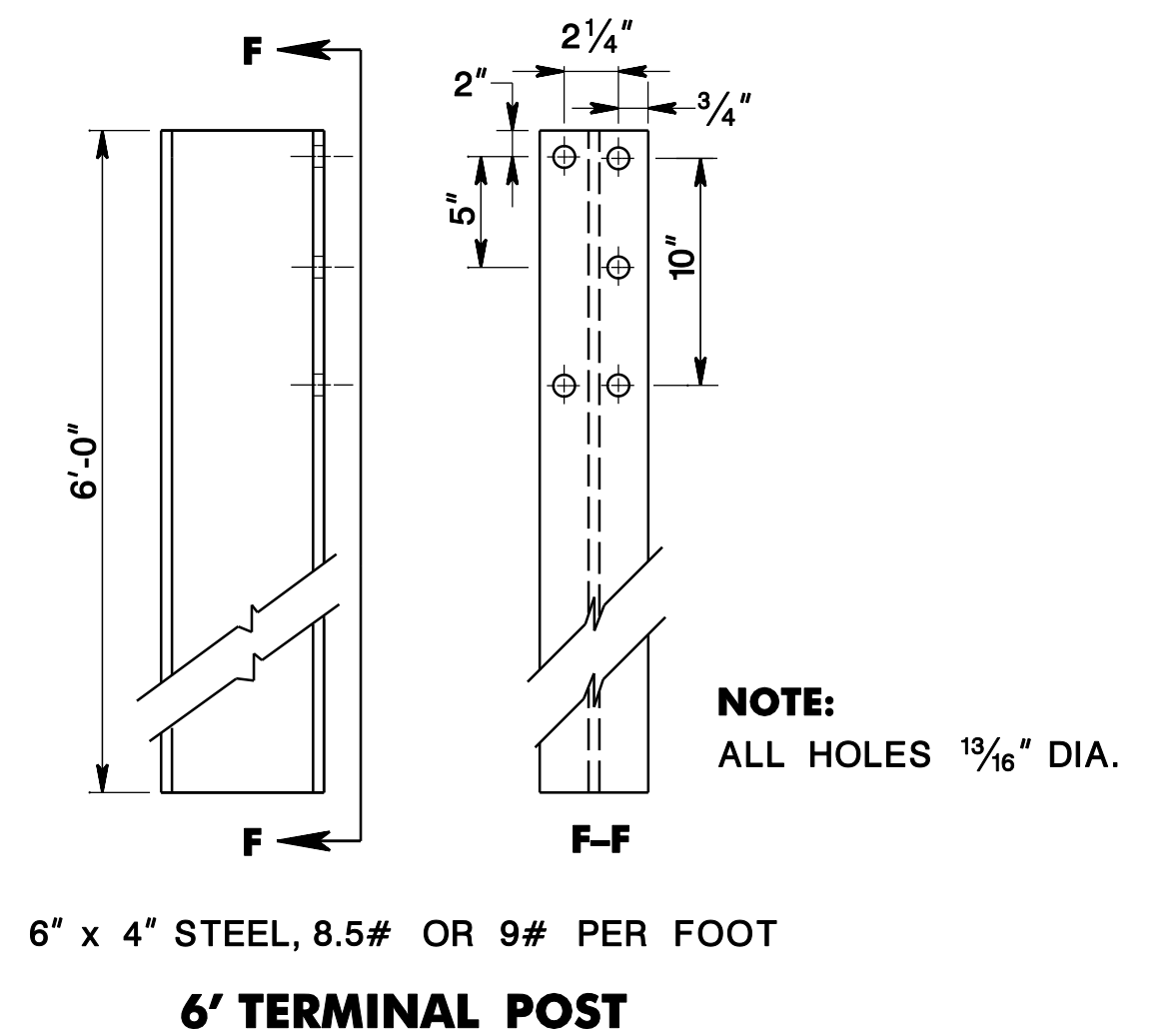
**BEAM GUIDE RAIL  
TERMINAL HOLES**



**STEEL PLATE**



**SQUARE WASHER**



**6' TERMINAL POST**

**BEAM GUIDE RAIL  
END TREATMENT  
FOR CUTS**

N.T.S.

CD-609-8A

NEW JERSEY DEPARTMENT OF TRANSPORTATION

**CONSTRUCTION DETAILS**

CD-609-8A.1