

WELCOME TO THE OPEN HOUSE FOR NEW JERSEY'S STATE RAIL PLAN

Why a State Rail Plan?

- Identifies and addresses the issues facing the state's passenger and freight railroads
- Identifies and addresses the conflicting interests of passenger and freight operations
- Provides a platform for multi-modal transportation
- Serves as a road map for improving/expanding rail service
- Educates the public on New Jersey's railroads
- Mandated by the Federal Railroad Administration (FRA)

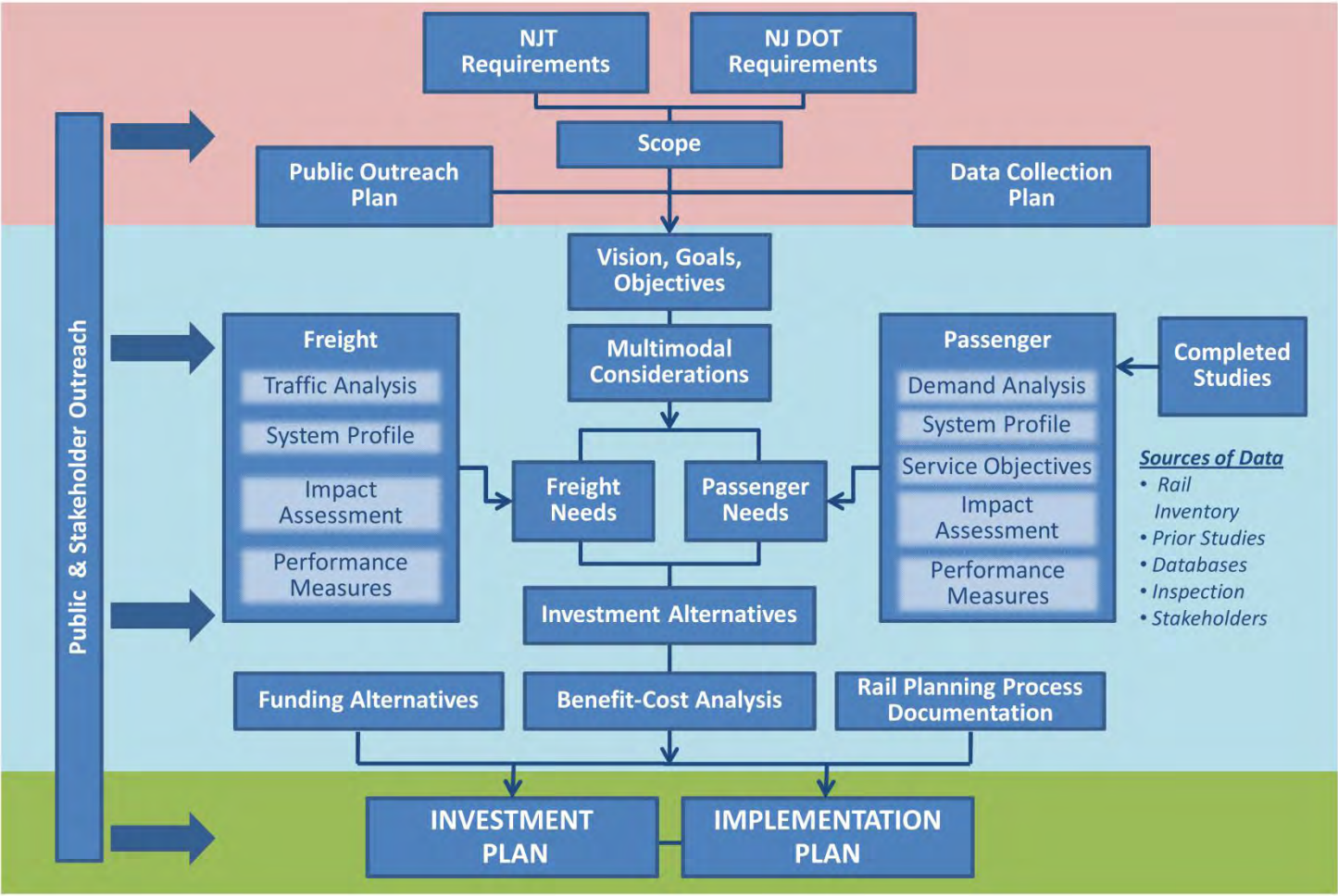


What is a State Rail Plan?

Plan Elements

- Describes the role of passenger and freight rail in the state
- Sets rail transportation goals and objectives
- Describes rail network, services and facilities
- Assesses passenger rail connections with other transportation modes (transit, highway access)
- Assesses rail connections with other freight transportation modes (ports, truck-rail transfer facilities)
- Describes rail impacts: economy, environment, energy consumption
- Evaluates passenger and freight services and infrastructure – needs assessment
- Provides a high speed rail corridor development plan
- Provides a long range investment program: proposed projects

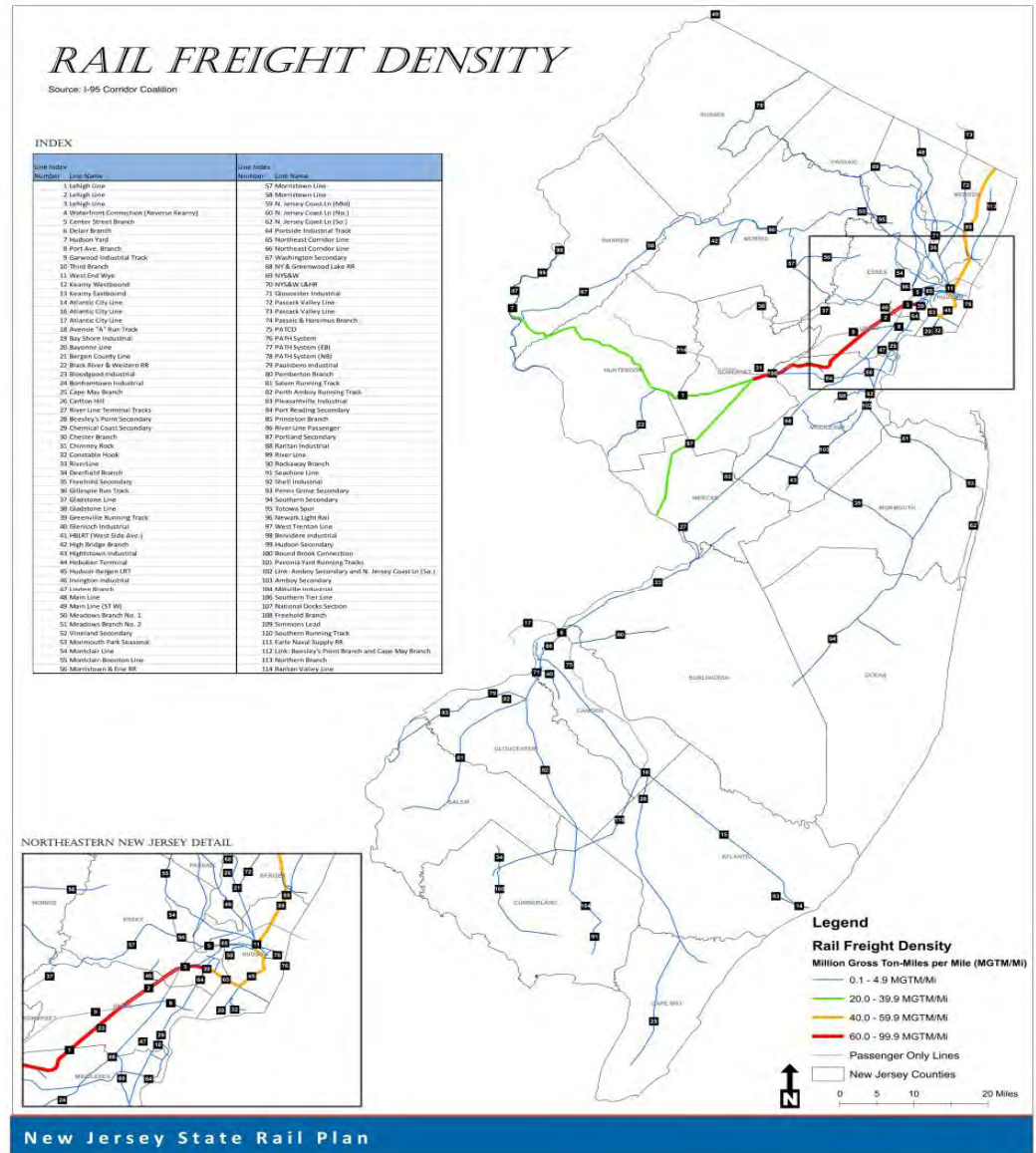
State Rail Plan Process



NEW JERSEY'S FREIGHT RAILROADS

Class/Type	Railroad Name	Miles Operated in New Jersey
Class I and Canadian	CSX Transportation	647
	Norfolk Southern Corporation	933
	Canadian Pacific Railway	68
Class II and Class III (Regional)	New York, Susquehanna and Western Railway	91
Class II and Class III (Local)	Belvidere and Delaware River Railway Company	20
	Morristown and Erie Railway, Inc.	42
Switching and Terminal Railroads	New Jersey Rail Carrier, LLC	2
	<i>(in switching category)</i>	
	New York and Greenwood Lake Railway	2
	SMS Rail Service, Inc.	13
	Southern Railroad Company of New Jersey	53
	Winchester and Western Railroad	54
	Black River and Western Railroad	17
	Conrail, Inc.	469
	East Jersey Railroad and Terminal Company	3
	New York, New Jersey Rail, LLC	1
<i>(Classified as New York Cross Harbor)</i>		
Port Jersey Railroad	5	
Raritan Central Railway, LLC	17	
US Rail Corporation	18	

*Mileage includes trackage rights on other lines



New Jersey State Rail Plan

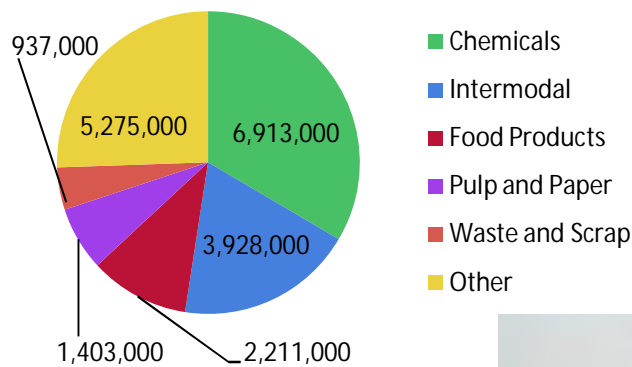
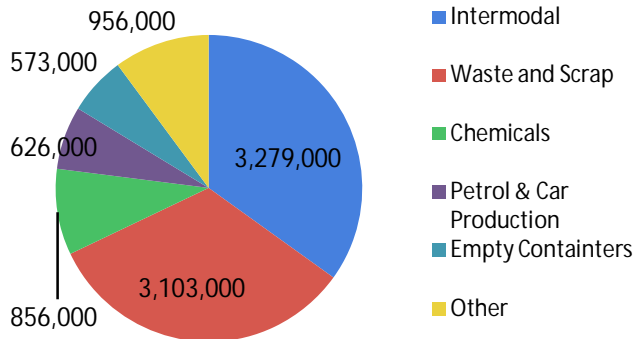


IMPORTANCE OF FREIGHT RAILROADS

Starting In New Jersey		
Freight	Tons	Percentage
Intermodal	3,279,000	34.9%
Waste and Scrap	3,103,000	33.0%
Chemicals	856,000	9.1%
Petrol & Car Production	626,000	6.7%
Empty Containers	573,000	6.1%
Other	956,000	10.2%
Total	9,393,000	100.0%

Ending in New Jersey		
Freight	Tons	Percentage
Chemicals	6,913,000	33.4%
Intermodal	3,928,000	19.0%
Food Products	2,211,000	10.7%
Pulp and Paper	1,403,000	6.8%
Waste and Scrap	937,000	4.5%
Other	5,275,000	25.5%
Total	20,557,000	100.0%

- 983 miles of railroad in the State
- Railroads are four times as fuel efficient as trucks
- Railroads produce one-third the amount of green house gases as trucks per ton of freight
- A typical train eliminates 240 trucks from the highway system



NEW JERSEY'S COMMUTER RAILROADS



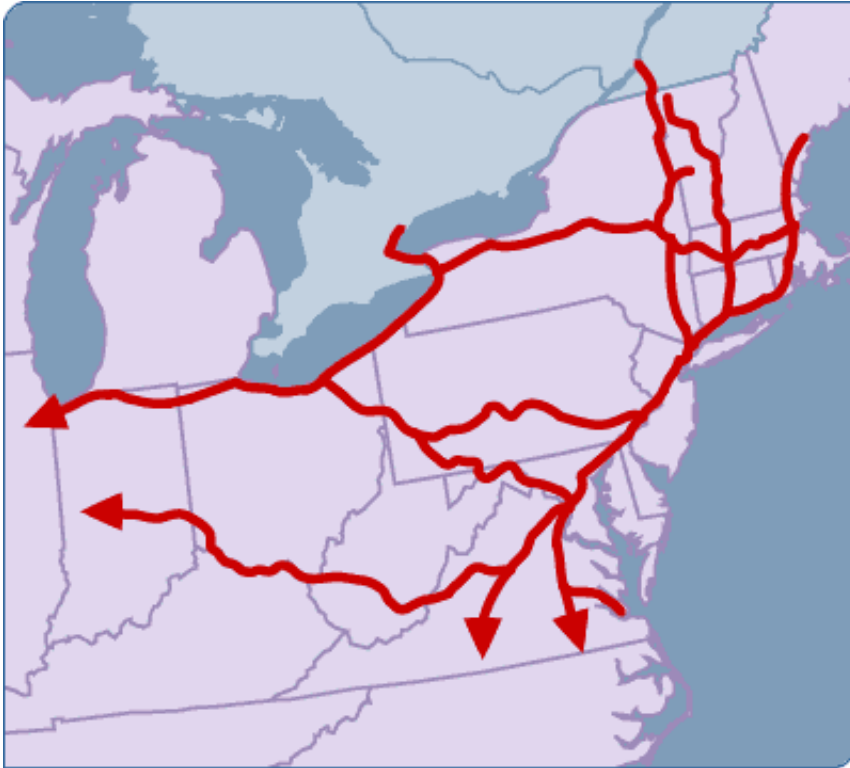
NJ TRANSIT OPERATIONS

- Operates ten rail routes serving 116 municipalities
- Operates 727 trains each weekday
- Nearly 400 trains run each Saturday and Sunday
- Over 276,000 riders use NJ TRANSIT rail service each weekday



- The 2011 average weekday passenger boarding at NY Penn Station was 77,058
- NJ TRANSIT operates three light rail lines
- NJ TRANSIT operates a fleet of 3092 buses and 72 light rail cars
- Serves nearly 223 million passenger trips each year on all modes

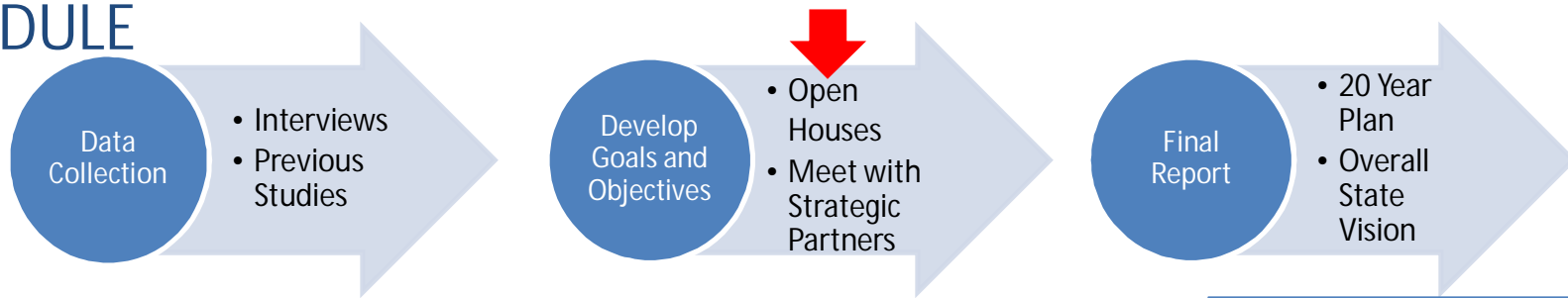
AMTRAK'S NORTHEAST CORRIDOR LINE



- Amtrak operates 110 trains daily in New Jersey
- New Jersey has six Amtrak stations: Newark, Newark International Airport, Metropark, New Brunswick, Princeton Junction and Trenton
- Two of Amtrak's twenty-five busiest stations are in New Jersey: Newark (14th/ 686,626 passengers); Trenton (23rd/ 424,068 passengers)
- The Northeast Corridor is the busiest rail line in the country



SCHEDULE



The State Rail Plan will be completed fall of 2012.

NEXT STEPS

- Meetings with rail partners
- Public and stakeholder input
- Finalize overall goals
- Establish long term plan for the state's rail transportation system
- Write the State Rail Plan

Visit the Web Site:

www.state.nj.us/transportation/freight/rail

STAY INVOLVED

You can:

- Fill out the comment sheet (tonight)
- Place comments on the web site
- Contact us via email at: StateRailPlan@njtransit.com