

State Of New Jersey



C A F R

Comprehensive Annual
Financial Report

For The Fiscal Year Ended
June 30, 2015



State of New Jersey



Comprehensive Annual Financial Report Fiscal Year Ended June 30, 2015

Chris Christie
Governor

Kim Guadagno
Lieutenant Governor

Ford M. Scudder
Acting State Treasurer

David Ridolfino
Acting Director Office of Management and Budget

Michael A. Griffin
*Assistant Director
Financial Management*

Mary Byrne
*Deputy Director
Office of Management and
Budget*

James F. Kelly
*Manager
Financial Reporting*

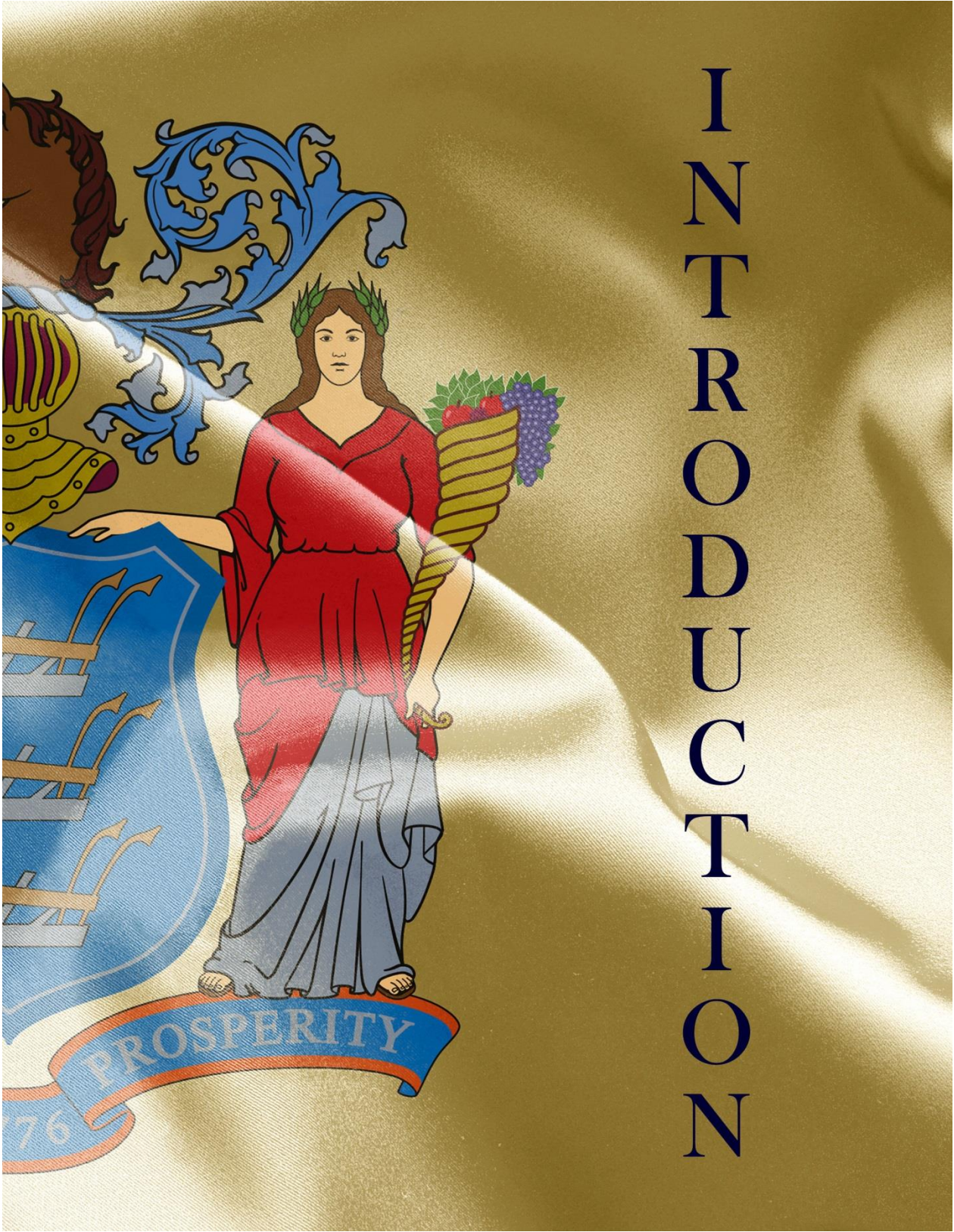
(This page left intentionally blank)

**STATE OF NEW JERSEY
 COMPREHENSIVE ANNUAL FINANCIAL REPORT
 FISCAL YEAR ENDED JUNE 30, 2015
 TABLE OF CONTENTS**

INTRODUCTION	Page
Letter of Transmittal	1
Certificate of Achievement	7
FINANCIAL SECTION	
Independent Auditor’s Report	11
Management’s Discussion and Analysis	16
Basic Financial Statements	
Government-wide Financial Statements	
Statement of Net Position	30
Statement of Activities	32
Governmental Funds Financial Statements	
Balance Sheet	34
Reconciliation of the Governmental Funds Balance Sheet to the Statement of Net Position	35
Statement of Revenues, Expenditures and Changes in Fund Balances.....	36
Reconciliation of the Changes in Fund Balances of Governmental Funds to the Statement of Activities.....	37
Proprietary Funds Financial Statements	
Statement of Net Position	38
Statement of Revenues, Expenses and Changes in Net Position	39
Statement of Cash Flows	40
Fiduciary Funds Financial Statements	
Statement of Fiduciary Net Position	42
Statement of Changes in Fiduciary Net Position	44
Component Units Financial Statements	
Statement of Net Position.....	46
Statement of Activities	48
Index to the Notes to the Financial Statements	52
Notes to the Financial Statements	53
Required Supplementary Information	
Budgetary Comparison Schedule	118
Budgetary Comparison Schedule – Budget-to-GAAP Reconciliation-Major Funds.....	121
Notes to Required Supplementary Information	123
Schedule of Changes in the State's Net Pension Liability and Related Ratios	124
Schedule of Employer Contributions – Single-Employer Pension Plans	126
Schedule of Net Pension Liability Cost-Sharing Employer Pension Plans	127
Schedule of Schedule of Employer (State) Contributions – Cost-Sharing Employer Pension Plans	128
Schedule of Funding Progress – Health Benefits Program Fund	129

Combining Financial Statements and Schedules

Governmental Funds - Major Fund – General Fund	
Balance Sheet	132
Schedule of Revenues, Expenditures and Changes in Fund Balances.....	150
Governmental Funds – Non-Major Funds	
Balance Sheet – By Fund Type	166
Statement of Revenues, Expenditures and Changes in Fund Balances – By Fund Type	167
Special Revenue Funds	
Balance Sheet	168
Statement of Revenues, Expenditures and Changes in Fund Balances	186
Capital Projects Funds	
Balance Sheet	206
Statement of Revenues, Expenditures and Changes in Fund Balances	210
Fiduciary Funds	
Agency Funds	
Statement of Fiduciary Net Position	214
Statement of Changes in Assets and Liabilities	218
Pension and Other Employee Benefits Trust Funds	
Statement of Fiduciary Net Position	222
Statement of Changes in Fiduciary Net Position	226
Private Purpose Trust Funds	
Statement of Fiduciary Net Position	230
Statement of Changes in Fiduciary Net Position	232
Component Units	
Statement of Net Position – Non-Major Component Units	234
Statement of Activities – Non-Major Component Units	235
Authorities	
Statement of Net Position	236
Statement of Activities	240
Colleges and Universities	
Statement of Net Position	244
Statement of Activities	248
Description of Funds	251
Other Information	
Capital Assets	
Schedule of Changes in Gross Capital Assets by Function	279
Schedule of Gross Capital Assets by Function	280
Schedule of Changes in Accumulated Depreciation by Function	283
Schedule of Accumulated Depreciation by Function	284
Accumulated Depreciation as a Percentage of Capital Assets by Category	286
Accumulated Depreciation as a Percentage of Capital Assets by Function	286
Long-Term Obligations	
Schedule of Long-Term Obligations	288
Budgetary Schedules	
Budgetary Comparison Schedule Non-Major Governmental Funds	290
Budgetary Comparison Schedule-Budget-to-GAAP Reconciliation – Non-Major Funds	294
Schedule of Anticipated Revenue	296
Schedule of Appropriated Revenue	305
Schedule of Appropriations and Expenditures	306
STATISTICAL SECTION	
Statistical Section Index	327



I
N
T
R
O
D
U
C
T
I
O
N





State of New Jersey

CHRIS CHRISTIE
Governor

KIM GUADAGNO
Lt. Governor

DEPARTMENT OF THE TREASURY
OFFICE OF MANAGEMENT AND BUDGET
P.O. BOX 221
TRENTON, NJ 08625-0221

FORD M. SCUDDER
Acting State Treasurer

DAVID RIDOLFINO
Acting Director

March 10, 2016

Governor Chris Christie
Members of the State Legislature
New Jersey Citizens

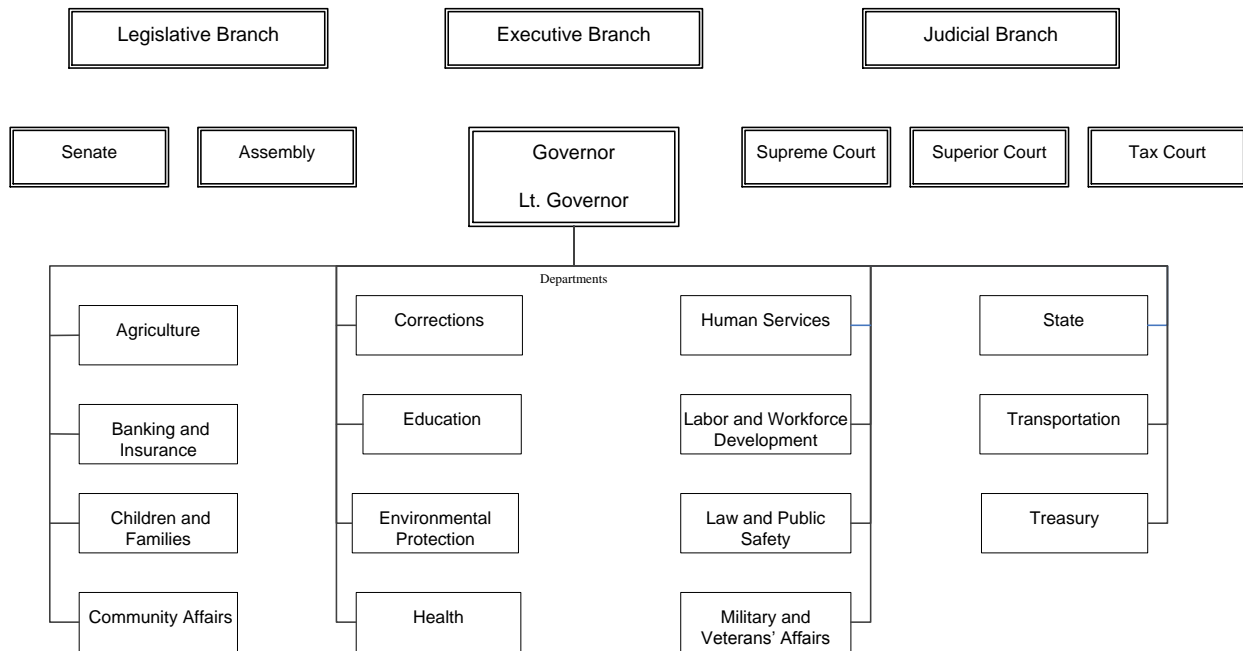
In accordance with the provisions of N.J.S.52:27B-46, it is our pleasure to transmit to you the State of New Jersey's Comprehensive Annual Financial Report (CAFR) for the fiscal year ended June 30, 2015. The Department of the Treasury's Office of Management and Budget prepared this report. The Department of the Treasury and the Office of Management and Budget are responsible for the accuracy, completeness, and fairness of all data presented, including all disclosures.

This CAFR presents the financial position and operating results of the State under generally accepted accounting principles (GAAP) applicable to state and local governments, as established by the Governmental Accounting Standards Board (GASB). The State also participates in the Government Finance Officers Association (GFOA) of the United States and Canada's Certificate of Achievement for Excellence in Financial Reporting review program.

The State operates in accordance with the standards provided in GASB Statements No. 34 and No. 35. In addition to providing traditional fund financial statements, the objective of this reporting model is to provide a single, unified, transparent picture of the State's fiscal health; thus, this CAFR clearly displays all of the State's revenues, costs, assets, and liabilities. This report also includes a Management's Discussion and Analysis section, which provides users with an objective and easy-to-read analysis of New Jersey's financial performance for the fiscal year ended June 30, 2015. We are confident that the data is accurate in all material respects and presented in a manner designed to set forth fairly the financial position and results of the State's operations, as measured by the fiscal activity of its various funds, and includes all disclosures necessary to enable the reader to gain a reasonable understanding of the State's financial affairs.

NEW JERSEY GOVERNMENT

The State of New Jersey was one of the original thirteen colonies and was the third state to ratify the United States Constitution in 1787. The original State Constitution was adopted on July 2, 1776 and was subsequently superseded by the State Constitution of 1844. A new State Constitution was prepared by a constitutional convention in 1947 and was ratified by voters of the State in the General Election held November 4, 1947. The State Constitution divides the powers of government between three co-equal independent branches: Legislative, Executive, and Judicial.



Legislative: The State’s bicameral Legislative Branch, which consists of a total of 120 members from 40 legislative districts with elections held in odd-numbered years, meets in annual sessions in Trenton, the State’s capital. The 40 members of the State Senate are elected to terms of four years, except for the election following a decennial census, in which case the term is for two years. The 80 members of the General Assembly are elected to terms of two years. Neither State Senators nor Assembly Members are subject to term limits. The Office of Legislative Services (OLS) is a nonpartisan agency that provides legislators with legal, fiscal, research, information, and administrative services. Key OLS positions include an executive director, a legislative counsel, the state auditor, a legislative budget and finance officer, a director of central staff, a director of data management, and a director of administration.

Executive: The Office of the Chief Executive, which oversees the entire Executive Branch, consists of the Governor, the Lieutenant Governor, Cabinet-level department heads, and staff who are responsible for carrying out the Governor’s constitutional powers and duties. Upon direct election by a plurality of the State’s voters, both the Governor and the Lieutenant Governor may serve two successive terms of four years. With the exception of the Secretary of Agriculture, who is chosen by the Board of Agriculture with the Governor’s approval, the New Jersey State Constitution grants the Governor the authority to appoint the entire cabinet as well as all Superior Court Judges and county prosecutors, subject to confirmation by the New Jersey Senate. Department heads remain in office until their successors are named and confirmed by the Senate; the only exceptions are the Attorney General and the Secretary of State, who are appointed to serve throughout the Governor’s entire term. Although the State Constitution permits a maximum of 20 departments, the State’s payroll consisted of approximately 56,700 employees in 15 departments as of January 2015. The Executive Branch also oversees the performance of 565 municipalities and 600 school districts, and the incarceration and rehabilitation of approximately 18,900 prisoners. In addition to reliable transportation and protection for the State’s citizenry and environment, the Executive Branch provides social services for one out of every six New Jersey citizens.

Judicial: New Jersey’s Supreme Court consists of a Chief Justice, who is the administrative head of all courts under the State’s jurisdiction, as well as six Associate Justices. In addition to Municipal and Tax Courts located throughout the State, there are Superior Courts, with a minimum of two Judges, in each of New Jersey’s 21 counties. After nomination by the Governor and subsequent confirmation by the State Senate, all Supreme Court Justices and Superior Court Judges serve initial terms of seven years. Should they be deemed eligible by both the Governor and the State Senate, Supreme Court Justices and Superior Court Judges acquire tenure with retirement at age 70 as mandated by the State Constitution. For purposes of judicial administration, the State is divided into 15 vicinages, each consisting of a single county or a combination of counties. The Administrative Office of the Courts provides support services. Approximately 7.4 million new cases are filed in New Jersey’s courts every year, including 6.5 million in Municipal Court and 0.9 million in Superior Court. These cases address matters concerning civil, criminal, and family law.

COLLEGES AND UNIVERSITIES

As of July 1, 2015, the higher education system in New Jersey includes three public research universities, eight State colleges and universities, 19 community colleges, 15 independent four-year colleges and universities, 11 proprietary institutions with degree-granting authority, 22 Talmudic institutions and theological seminaries, and one independent two-year religious college. In November 2012, New Jersey voters approved the \$750 million “Building our Future Bond Act” (P.L. 2012, c.141), and in April 2013, the State announced reauthorization of four additional higher education funding programs – the Higher Education Capital Improvement Fund (CIF); the Higher Education Facilities Trust Fund (HEFT); the Higher Education Technology Infrastructure Fund (HETI); and the Higher Education Equipment Leasing Fund (ELF). Together, these five programs will provide more than \$1.3 billion for the renewal of New Jersey’s higher education infrastructure. In November 2015, an additional round of funding from the Building our Future Bond Act and the CIF was announced. The remaining balance of the Building our Future Bond Act, \$34.3 million, and an additional \$146.0 million in CIF bond funds will be awarded during Fiscal Year 2017.

COMPONENT UNITS

In accordance with the requirements of GASB Statement No. 14, *The Financial Reporting Entity*, this CAFR for fiscal year ended June 30, 2015, includes the accounts of 21 public authorities and 11 State public colleges and universities. Public authorities are legal, separate entities that are not operating departments of the State. Governing boards are vested with the power to independently manage and set policies for the organization. Each component unit is established for a specific purpose for the benefit of the State’s citizenry. GASB Statement No. 14 provides that the State’s financial statements should emphasize the primary government and permit financial statement users to distinguish between the primary government and its component units. As a result, the transmittal letter, Management’s Discussion and Analysis, and the financial statements focus on the primary government of the State and its activities, although information pertaining to the component units is presented. For additional information, please see Note 19 – Component Units.

Effective February 5, 2015, and pursuant to P.L.2015,c.49, the New Jersey Meadowlands Commission was dissolved, and the New Jersey Sports and Exposition Authority absorbed the powers and assets of the New Jersey Meadowlands Commission.

Executive Order No. 122, signed on July 23, 2004, was established to direct the Board of Directors for each State Authority to create an Audit Committee whose members are to assist in the oversight of the financial reporting and audit processes of the Authority. Each member of the Audit Committee is independent of the Authority, with at least one member having a background in accounting or related financial expertise. The Audit Committee must assist the Board in retaining an independent auditor to conduct an audit. The auditor selection process must be based on public, competitive bidding principles and shall take place no less than once every five years. In order to ensure the independence of the auditor selection process, an evaluation committee shall be established by the Board to conduct the solicitation and evaluation of eligible auditors. The auditor selected shall report directly to the Audit Committee or the Board. At no time shall the auditor report to any staff member of the Authority. At least twice a year, the Audit Committee shall hold a private meeting with the auditor. In carrying out these duties, the Audit Committee shall proactively assist the Board in overseeing the integrity and quality of the Authority’s financial statements, the Authority’s compliance with legal, regulatory, and ethical requirements, the auditor’s performance and ability to perform, and the performance of the Authority’s own internal audit and internal control functions.

BUDGET AND ACCOUNTING

Legal Level of Control

The State’s annual Appropriations Act includes the General Fund, as well as certain Special Revenue Funds (Casino Control, Casino Revenue, Gubernatorial Elections, and Property Tax Relief). The departments maintain legal control at the appropriation line item level and exercise budgetary control by individual appropriations and allocations within annual appropriations to various programs and major expenditure objects. Program classifications represent a lower level operating program function, consisting of closely related activities with identifiable objectives or goals. Revisions to the annual Appropriations Act, reflecting program changes or interdepartmental transfers of an administrative nature, may be effected during the budget year with certain Executive and Legislative Branch approvals. Language, located in the “General Provisions” section of the State’s annual Appropriations Act, enables management to amend a department’s budget with approval by the Director of the Office of Management and Budget; under specific conditions, additional approval by the Office of Legislative Services is required. Only the State Legislature, however, may transfer appropriations between departments.

Accounting Systems

The Office of Management and Budget directs and supervises a central accounting system, which maintains all accounting records for the various State departments. The State's annual budget provides individual appropriations to departments for specific programs and purposes, while component units maintain separate accounting systems.

To ensure expenditures do not exceed appropriations and allocations, the State employs encumbrance accounting. Purchase orders, contracts, and other commitments involving monetary expenditures are encumbrances. Any unencumbered and unexpended non-continuing appropriations lapse at fiscal year's end.

Consideration as to the adequacy of internal controls is paramount in developing and maintaining the State's accounting system. Internal accounting controls are designed to provide reasonable assurance regarding the safeguarding of assets against loss from unauthorized use or disposition, and guarantee that financial records are reliable for preparing financial statements and maintaining accountability for assets. The concept of reasonable assurance recognizes that the cost of a control should not exceed the benefits likely to be derived from its use, and the evaluation of costs and benefits requires managerial estimates and judgments. All internal control evaluations occur within this framework.

RELEVANT FINANCIAL POLICIES

The New Jersey State Constitution, which mandates an annual balanced budget, directs, in part, that no money shall be drawn from the State Treasury but for appropriations made by law and that no law appropriating money for any State purpose shall be enacted if the appropriations contained therein, together with all prior appropriations made for the same fiscal period, shall exceed the total amount of the revenue on hand and anticipated to be available to meet such appropriations during such fiscal period, as certified by the Governor. Accordingly, during the fiscal year, the State may have to make several revenue and expenditure adjustments to ensure a positive fund balance. The State has had a balanced budget in every fiscal year since the adoption of the State Constitution in 1947.

Created as a "rainy day fund," the Surplus Revenue Fund is part of the General Fund's resources and fund balance, and accounts for excess revenues from prior fiscal years that are reserved legislatively and may be used to support current year's appropriations in the event that anticipated revenues in the General Fund are estimated to be less than those certified by the Governor upon approval of the annual Appropriations Act. The Surplus Revenue Fund was designed to build fund balance during economic upswings, and to be expended during economic downturns and emergency situations. Such an example occurred during Fiscal Year 2009 when, in response to the national recession, the State drained its entire Surplus Revenue Fund to help balance its budget. As of June 30, 2015, this Fund continued to have a zero balance.

The State employs a budgetary basis of accounting for all of its annual fiscal transactions. The budgetary basis differs from the GAAP basis, which is used to present fund financial statements, in that the former: 1) recognizes encumbrances as expenditures, 2) recognizes all federal revenues related to such encumbrances, and 3) reflects only current fiscal year transactions. The GAAP basis also requires that certain grants and other financial assistance be recorded as revenues and/or expenditures.

FINANCIAL TRENDS

Revenue History

State-budgeted Fiscal Year 2015 revenue collections of \$33.1 billion were the highest in State history, surpassing the pre-recession peak of \$32.6 billion in Fiscal Year 2008. Revenues have grown by nearly \$1.75 billion from the prior fiscal year. Of the major revenues, the greatest gain was in the highly volatile Corporate Business Tax which grew by \$554.0 million or 26.4%. The New Jersey labor market continues to expand and unemployment has fallen to 5.1% with significantly greater labor force participation than the national average. With the current Fiscal Year 2016 revenue estimate projected to be \$33.8 billion, the State's economic recovery trend remains optimistic. The Statistical Section provides a ten-year history of State-budgeted revenue collections.

Pension and Other Postemployment Benefits (OPEB) Obligations

In Fiscal Year 2015 the State funded the various defined benefit pension systems at their employer normal cost plus an additional \$212 million rather than the full actuarially recommended amount. The State implemented GASB Statement No. 68, *Accounting and Financial Reporting for Pensions*, in Fiscal Year 2015. The new statement was designed to improve the accounting and financial reporting of public employee pensions by state and local governments and enhance the usefulness of pension information for making decisions and assessing accountability. Although the new statement is intended to improve comparability between public pension plans by standardizing the way certain financial data relating to plans are disclosed, it does

not require plans to change their methods used to compute actual employer contributions to the plans. Employer contributions to the pension plans continue to be calculated per the requirements of the governing State statutes using generally accepted actuarial procedures and practices. The actuarial funding method used to determine the State's contribution is a matter of State law. Any change to the funding method requires the approval of the State Legislature and the Governor. The amount the State actually contributes to the pension plans may differ from the actuarially recommended contributions of the pension plans because the State's contribution to the pension plans is subject to the appropriation of the State Legislature and actions by the Governor. GASB Statement No. 68 requires participating employers to recognize their proportionate share of the collective net pension liability. Under the new statement, the calculation of the pension liability was changed to a more conservative methodology and each employer was allocated their proportional share of the pension plans' net pension liability. The State's share of the net pension liability, based on a measurement date of June 30, 2014, which is required to be recorded on the financial statements, is \$78.9 billion.

The Fiscal Year 2016 Appropriations Act includes an appropriation to the pension plans of \$1.307 billion representing 3/10th of the full actuarially recommended contribution.

The State provides post-retirement medical ("PRM") benefits for certain State and other retired employees meeting the service credit eligibility requirements. In Fiscal Year 2015, the State paid PRM benefits for 140,415 State and local retirees.

The State funds post-retirement medical benefits on a "pay-as-you-go" basis, which means that the State does not pre-fund, or otherwise establish a reserve or other pool of assets against the PRM expenses that the State may incur in future years. For Fiscal Year 2015, the State contributed \$1.684 billion to pay for pay-as-you-go PRM benefit costs incurred by covered retirees. The increase in the State's pay-as-you-go contribution between Fiscal Year 2014 and Fiscal Year 2015 is attributed to rising health care costs, an increase in the number of participants qualifying for State-paid PRM benefits at retirement and larger fund balance utilization in Fiscal Year 2014 than in Fiscal Year 2015. The Fiscal Year 2016 Appropriations Act includes \$1.783 billion as the State's contribution to fund pay-as-you-go PRM costs.

In accordance with the provisions of GASB Statement No. 43 and 45, the State is required to quantify and disclose its obligations to pay PRM to current and future retirees. The Fiscal Year 2014 actuarial accrued liability of the State to provide PRM to active and retired members of the pension plans, which is based upon GASB Statement No. 43 results as of July 1, 2014, has been measured to be \$65.0 billion, an increase of \$12.0 billion or 22.7 percent as compared to the Fiscal Year 2013 actuarial accrued liability of \$53.0 billion. The liability included as long-term obligation in these financial statements, in accordance with GASB Statement No. 45, is \$28.0 billion compared to \$23.6 billion last year. Fiscal Year 2015 actuarial reports can be accessed via <http://www.state.nj.us/treasury/pensions/actuarial-rpts.shtml>.

AUDIT INFORMATION

The principal auditor of the State's reporting entity is the Office of the State Auditor, which resides in the Legislative Branch of State government. The State Auditor's examination was conducted in accordance with generally accepted auditing standards and its opinion precedes the Basic Financial Statements. Private sector public accounting firms have been used for the audits of separately issued component units and college and university financial statements. In addition, the Office of the State Auditor conducts periodic financial and expanded scope audits of various State agencies. Additional information regarding the State's financial status, including prior year budgets, appropriations acts, and financial reports, is available on the State's web site (<http://www.state.nj.us/treasury/omb/>).

CERTIFICATE OF ACHIEVEMENT FOR EXCELLENCE IN FINANCIAL REPORTING

The GFOA awarded the Certificate of Achievement for Excellence in Financial Reporting to the State of New Jersey for its CAFR for the fiscal year ended June 30, 2014. In order to qualify for this certificate, a governmental entity must publish an easily readable and efficiently organized comprehensive annual financial report, of which the contents conform to program standards. Such reports must satisfy both generally accepted accounting principles and applicable legal requirements. The State of New Jersey has received this award every year since 1993.

ACKNOWLEDGEMENTS

Finally, we express our grateful appreciation to the many dedicated professionals in the Office of Management and Budget and the Office of the State Auditor, whose work made possible the preparation of this report. We believe their combined efforts have produced a report that will provide a means for government, the financial community, decision makers, and concerned citizens to better understand and evaluate the State's financial condition.

Sincerely,



Ford M. Scudder
Acting State Treasurer



David Ridolfino
Acting Director, Office of Management and Budget



Government Finance Officers Association

**Certificate of
Achievement
for Excellence
in Financial
Reporting**

Presented to

State of New Jersey

For its Comprehensive Annual
Financial Report
for the Fiscal Year Ended

June 30, 2014

Executive Director/CEO