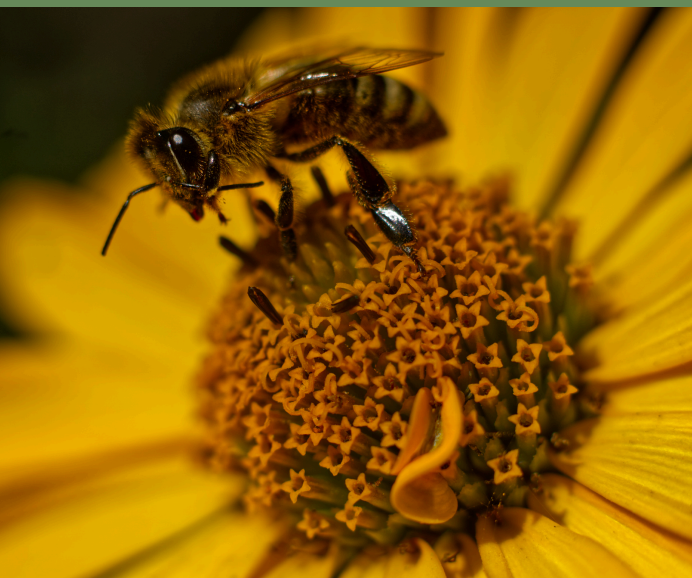


**You must have
five acres of land
actively devoted
to agricultural or
horticultural use
to qualify for
farmland
assessment, no
exceptions for
beekeepers.**

Bees and Farmland Assessment



QUESTIONS?

Sara Mellor
Agricultural Resource Specialist
sara.mellor@ag.nj.gov

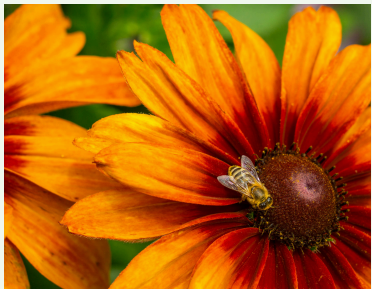
Meghan McConnell
NJ State Apiarist
meghan.mcconnell@ag.nj.gov



EXAMPLES

On a 16-acre parcel of woodland 80 beehives are maintained. A gross income in excess of \$4,000 is received annually from farmers in the area for use of the bees in pollinating their crops. Over \$1,155 is also received from the sale of honey. Because the 16 acres is not being managed for honey production, the landowner hires an approved forester to develop a woodland management plan. The woodland management plan will need to be implemented for two full calendar years before being eligible for Farmland Assessment in the third year. For purposes of gross sales criteria income from pollination of crops does not count, only honey sales.

A nine-acre property has a farmhouse on one acre with the remaining eight acres actively devoted to a mixture of agricultural and horticultural practices. Two acres are a managed pollinator habitat devoted to cropland harvested growing native herbaceous perennials. The seeds are harvested annually, counting for \$200 of income. Ten beehives are in the herbaceous perennial area for the bees to forage on. Annual honey sales reach about \$800. The herbaceous area is maintained by being mowed once a year and reseeded in areas that have thinned out. Permanent pasture is four acres where chickens, goats, horses, and geese graze, providing \$950 from selling eggs and goat milk soap. Additionally, the parcel includes two acres of appurtenant woodland. Eight acres qualify for farmland assessment.



WHERE DO BEES FIT UNDER FARMLAND ASSESSMENT?

Bees and apiary products fall under "agricultural use", meaning land devoted to the production for sale of plants and animals useful to man.

N.J.A.C. 18:15-1.1

Bees alone can not qualify for farmland assessment.