



Please submit public comments to sadc@ag.nj.gov

Old Business



Slide 2

**Hunter Farms
Block 26001 Lot 1.02
Montgomery Twp.
Somerset County**





Slide 5



Slide 6



Slide 7



Slide 8

**Hunter Farms
Block 26001 Lot 1.02
Montgomery Twp.
Somerset County**



Acquisition Final Approvals



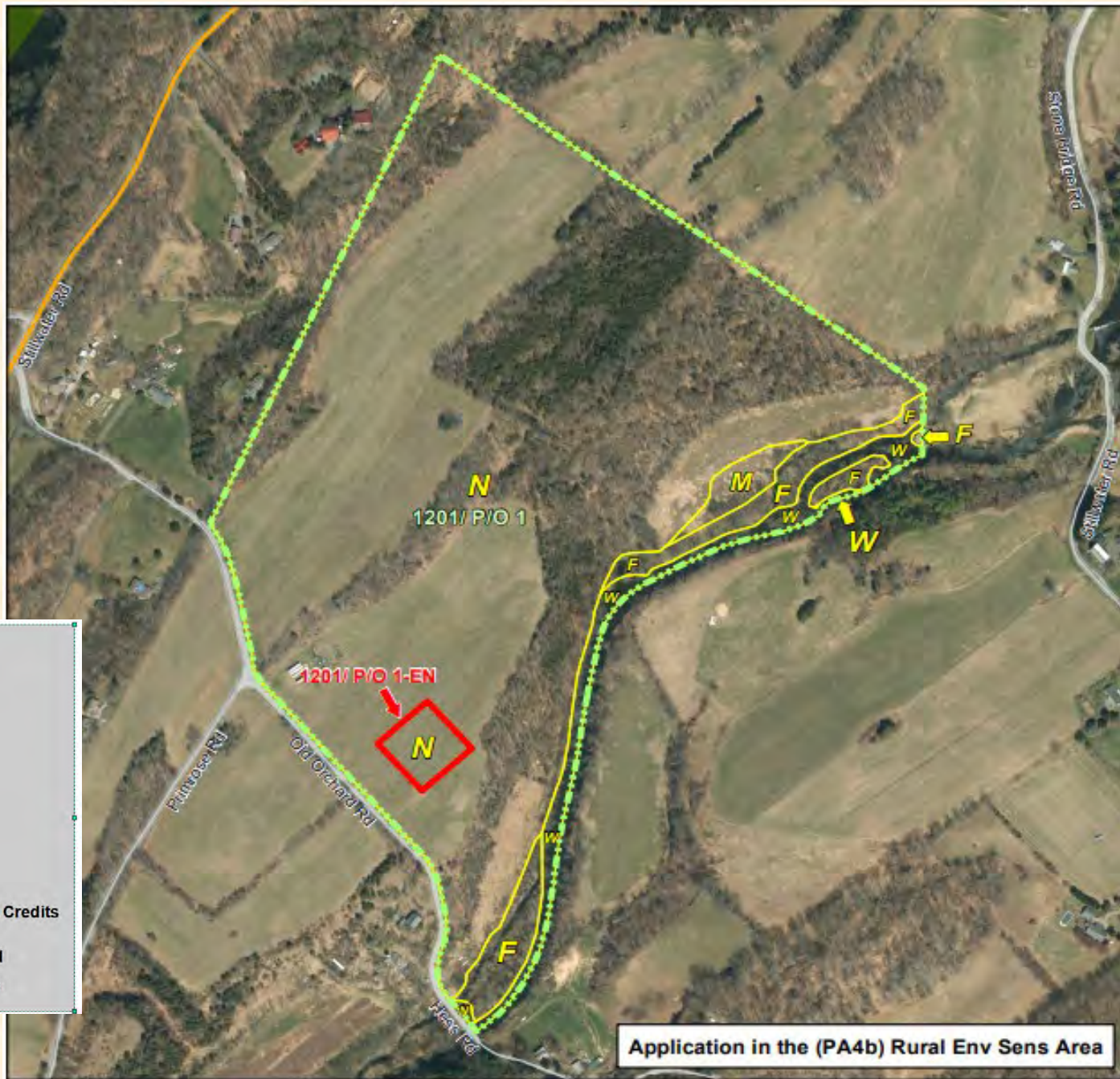
Slide 10

7 Old Orchard Rd LLC
75.3 Easement Acres
Hardwick Twp, Warren County
1 ac nonseverable exception
50% in hay

-  Property In Question
-  Exceptions
-  Preserved Easements
-  Transfer Development Rights (TDR)
Preserved: Highlands,
Pinelands and Municipal
-  Active Applications
-  County Boundaries
-  Municipal Boundaries
-  Pinelands (or Highlands) Development Credits
-  Municipal, County and Non-Profit
Preserved Open Space, State Owned
Conservation Easements, & State
Owned O/S & Recreation Easements



7 Old Orchard Rd LLC
 75.3 Easement Acres
 Hardwick Twp, Warren
 County
 1 ac nonseverable exception
 50% in hay



-  Property In Question
-  EN - (Non-Severable) Exception
-  Wetlands Boundaries
-  Primary - Limited Access
-  Federal or State Hwys
-  County Roads
-  Municipal/Local Roads
-  Highlands (or Pinelands) Development Credits
-  Municipal, County and Non-Profit Preserved Open Space, State Owned Conservation Easements, & State Owned O/S & Recreation Easements

Amended Final Approval



Thomas & Michelle Grochowicz
78.684 Easement Acres
Boroughs of Hampton &
Glen Gardner
Bethlehem Township,
Hunterdon County
1 ac nonseverable exception
2 ac severable exception
7 ac severable exception
80% in hay, corn and dairy



- Property In Question
- Exceptions
- Preserved Easements
- Transfer Development Rights (TDR)
Preserved: Highlands, Pinelands and Municipal
- Active Applications
- County Boundaries
- Municipal Boundaries
- Pinelands (or Highlands) Development Credits
- Municipal, County and Non-Profit Preserved Open Space, State Owned Conservation Easements, & State Owned O/S & Recreation Easements

Amended Final Approval

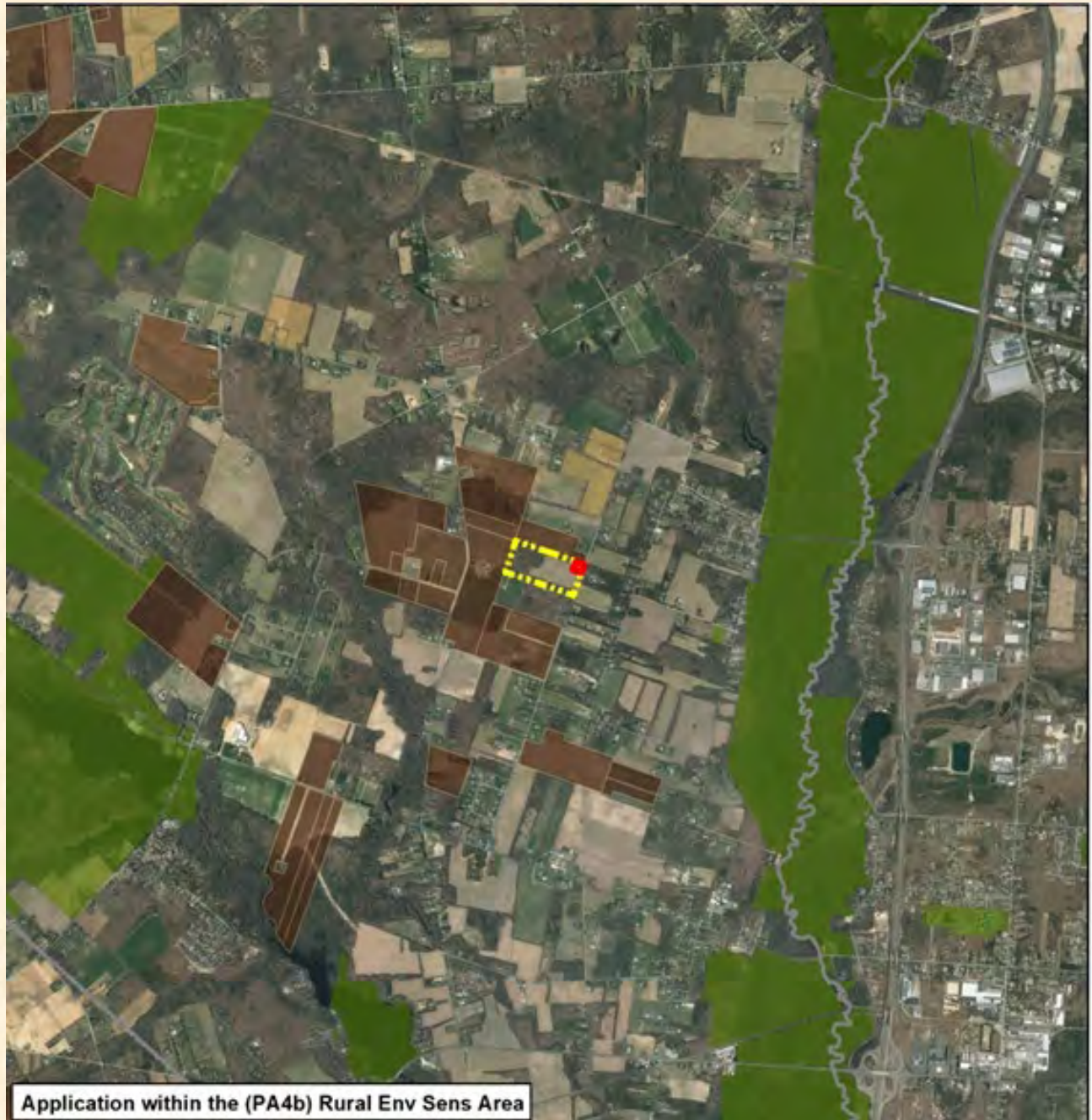
Thomas & Michelle Grochowicz
 78.684 Easement Acres
 Boroughs of Hampton &
 Glen Gardner
 Bethlehem Township,
 Hunterdon County
 1 ac nonseverable exception
 2 ac severable exception
 7 ac severable exception
 80% in hay, corn and dairy



-  Property In Question
-  EN - (Non-Severable) Exception
-  ES - (Severable) Exception
-  Wetlands Boundaries
-  300 ft Buffered Wetlands
-  Primary - Limited Access
-  Federal or State Hwys
-  County Roads
-  Municipal/Local Roads
-  Pinelands Development Credits
-  Municipal, County and Non-Profit Preserved Open Space, State Owned Conservation Easements, & State Owned O/S & Recreation Easements

JWP Properties LLC
28.2 Easement Acres
Pittsgrove Twp, Salem County
1 ac nonseverable exception
62% in hay

-  Property In Question
-  Exceptions
-  Preserved Easements
-  Transfer Development Rights (TDR)
Preserved: Highlands,
Pinelands and Municipal
-  Active Applications
-  County Boundaries
-  Municipal Boundaries
-  Pinelands (or Highlands) Development Credits
-  Municipal, County and Non-Profit
Preserved Open Space, State Owned
Conservation Easements, & State
Owned O/S & Recreation Easements



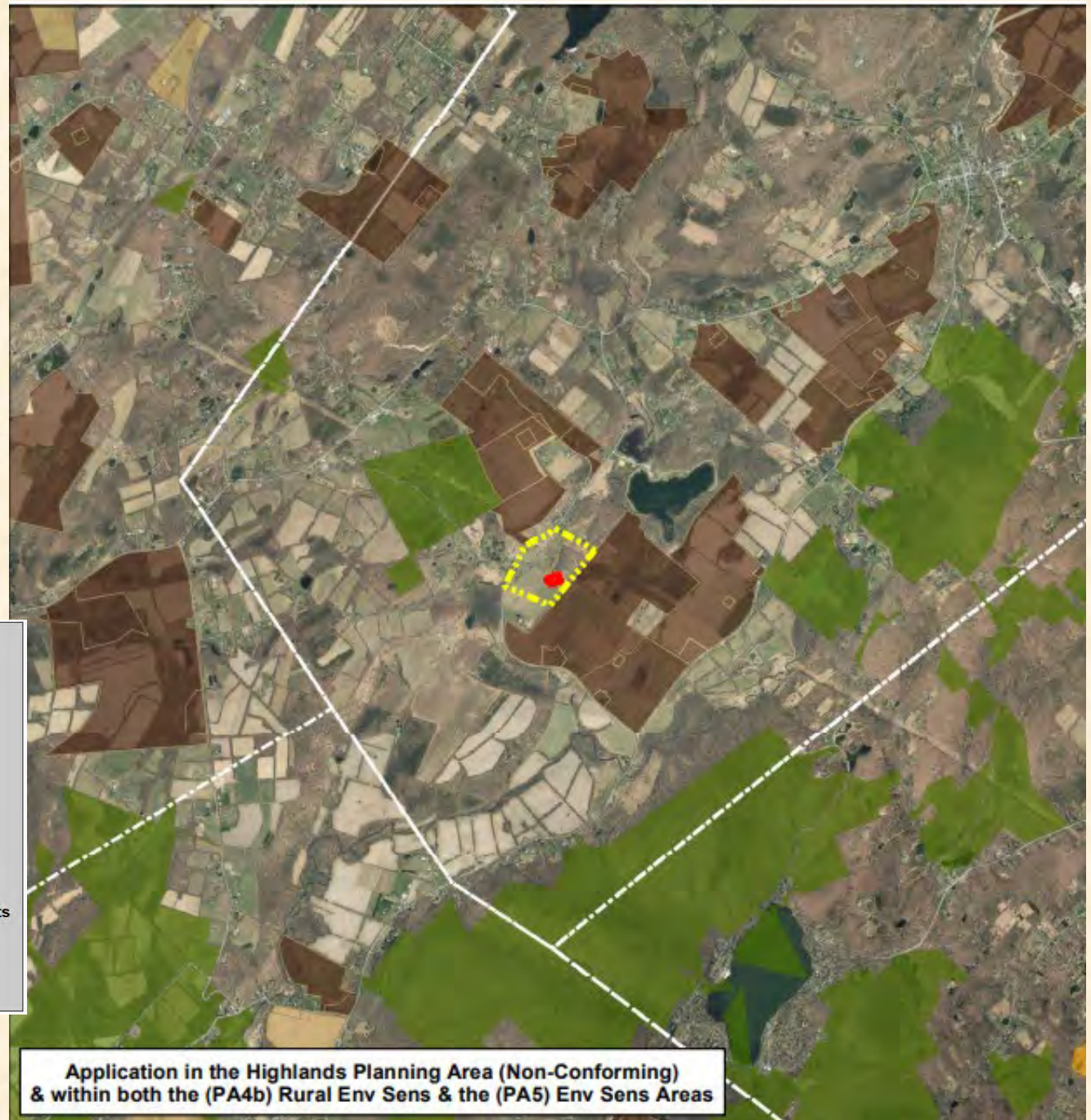
Application within the (PA4b) Rural Env Sens Area

JWP Properties LLC
28.2 Easement Acres
Pittsgrove Twp, Salem County
1 ac nonseverable exception
62% in hay

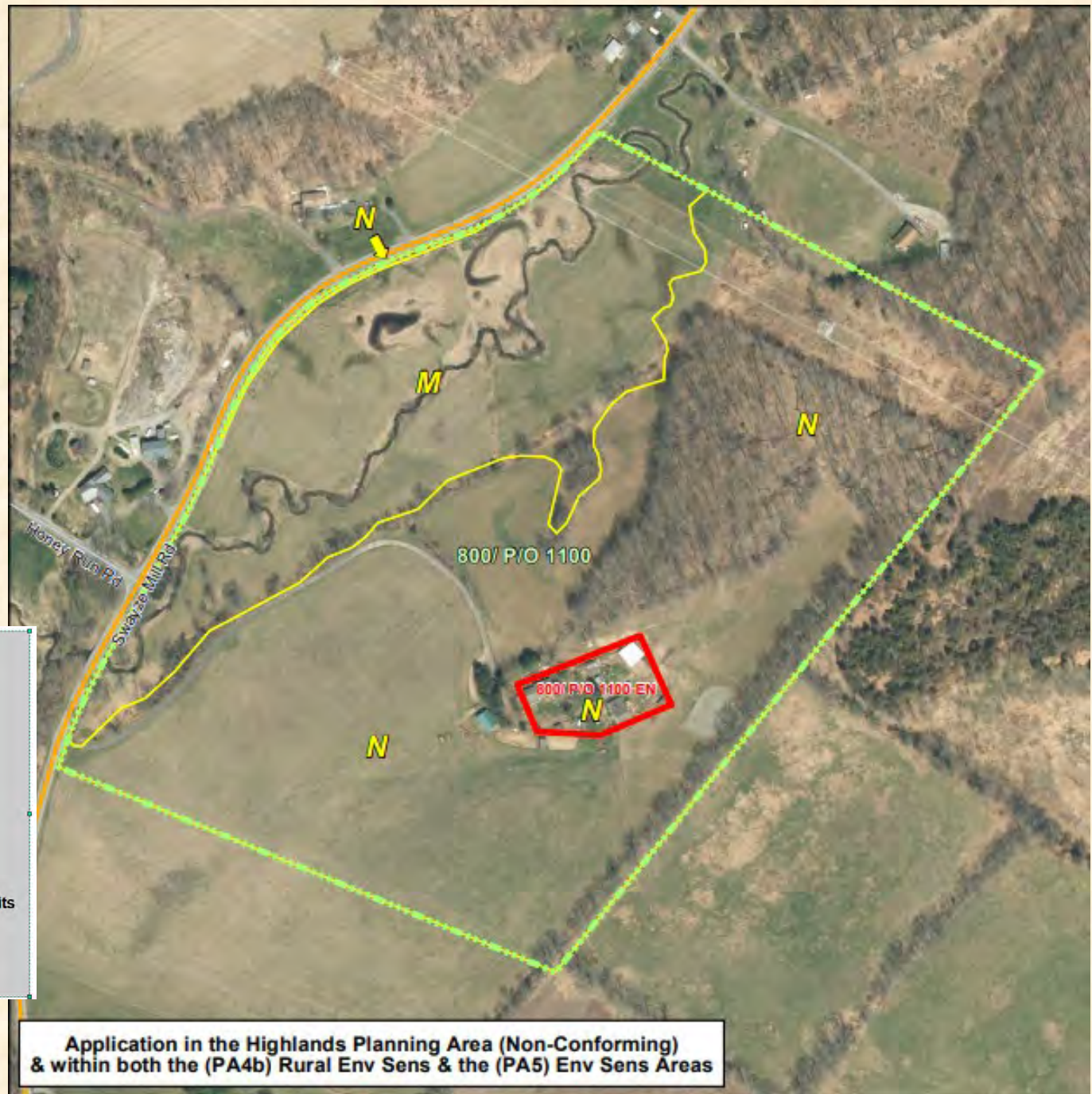




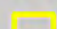
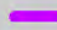





- Property In Question
- EN - (Non-Severable) Exception
- Wetlands Boundaries
- Primary - Limited Access
- Federal or State Hwys
- County Roads
- Municipal/Local Roads
- Highlands (or Pinelands) Development Credits
- Municipal, County and Non-Profit Preserved Open Space, State Owned Conservation Easements, & State Owned O/S & Recreation Easements

George & Lorraine Gugel
47.5 Easement Acres
Hope Twp, Warren County
1 ac nonseverable exception
84% in hay & pasture



George & Lorraine Gugel
 47.5 Easement Acres
 Hope Twp, Warren County
 1 ac nonseverable exception
 84% in hay & pasture



-  Property In Question
-  EN - (Non-Severable) Exception
-  Wetlands Boundaries
-  Primary - Limited Access
-  Federal or State Hwys
-  County Roads
-  Municipal/Local Roads
-  Highlands (or Pinelands) Development Credits
-  Municipal, County and Non-Profit Preserved Open Space, State Owned Conservation Easements, & State Owned O/S & Recreation Easements

Application in the Highlands Planning Area (Non-Conforming)
 & within both the (PA4b) Rural Env Sens & the (PA5) Env Sens Areas

Risk it All Farm, LLC
202.4 Net Easement Acres
Alloway, Mannington, & Quinton Twps
Salem County
1 existing single family residence
1 Residual Dwelling Site Opportunity

76% in soybeans & livestock

-  Property In Question
-  Exceptions
-  Preserved Easements
-  Transfer Development Rights (TDR)
Preserved: Highlands,
Pinelands and Municipal
-  Active Applications
-  County Boundaries
-  Municipal Boundaries
-  Pinelands (or Highlands) Development Credits
-  Municipal, County and Non-Profit
Preserved Open Space, State Owned
Conservation Easements, & State
Owned O/S & Recreation Easements



Application within the (PA 4) Rural Area

Risk it All Farm, LLC
202.4 Net Easement Acres
Alloway, Mannington, & Quinton Twps
Salem County
 1 existing single family residence
 1 Residual Dwelling Site Opportunity

76% in soybeans & livestock

