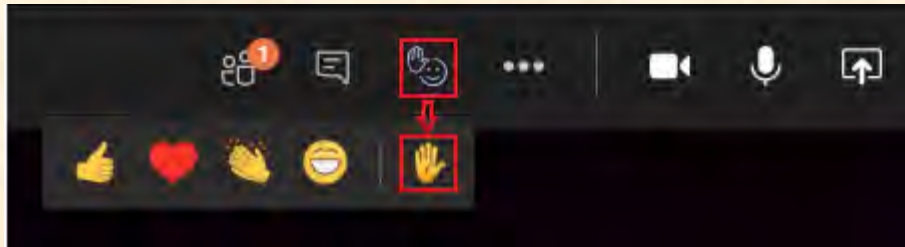




Slide 1

THE SADC HAS CHANGED HOW THE PUBLIC PARTICIPATES IN OUR MONTHLY MEETING

IF A MEMBER OF THE PUBLIC, WHO ATTENDS THE MEETING BY USING TEAMS OR THE URL LINK, WOULD LIKE TO ADDRESS THE COMMITTEE DURING THE PUBLIC PORTION OF THE MEETING, THEY CAN DO SO BY “RAISING YOUR HAND”



SIMPLY CLICK ON THE HAND AND FACE ICON AT THE TOP OF YOUR SCREEN WHILE IN THE MEETING AND THEN CLICK THE RAISE HAND. <https://youtu.be/xRi0hxL4yHo>

**PLEASE WAIT FOR YOUR NAME TO BE CALLED BEFORE YOU BEGIN SPEAKING.**

IF A MEMBER OF THE PUBLIC, WHO ATTENDS THE MEETING BY USING THE CALL-IN FEATURE, WOULD LIKE TO ADDRESS THE COMMITTEE DURING THE PUBLIC PORTION OF THE MEETING, THEY WILL BE GIVEN AN OPPORTUNITY AFTER ALL THE “RAISED HANDS” HAVE SPOKEN.

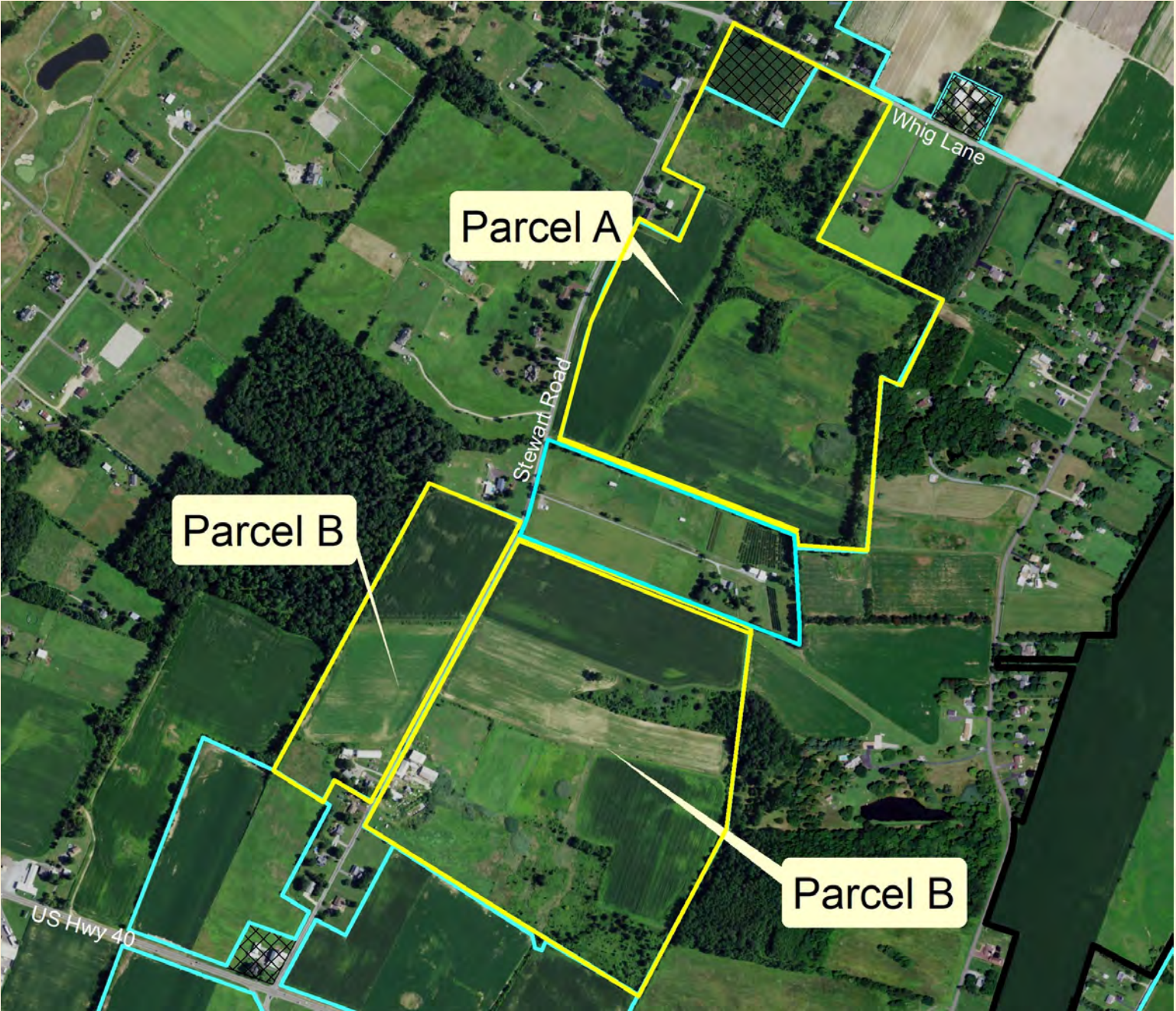


Please email Jessica Uttal, [Jessica.uttal@ag.nj.gov](mailto:Jessica.uttal@ag.nj.gov), if you need further instructions.

Theodore C. Miller  
Farm

Block 41  
Lots 1 & 4  
Block 40,  
Lot 14  
Pilesgrove Twp,  
Salem County

195.67 Easement  
Acres





Theodore C. Miller Farm  
Parcel B  
Block 40 Lot 14  
Block 41, Lot 4  
Pilesgrove Twp, Salem  
County

111.07 Easement Acres

2 Existing Single Family  
Residences



Slide 5



**Slide 6**



Slide 7



**Slide 8**



# Approvals for Acquisition

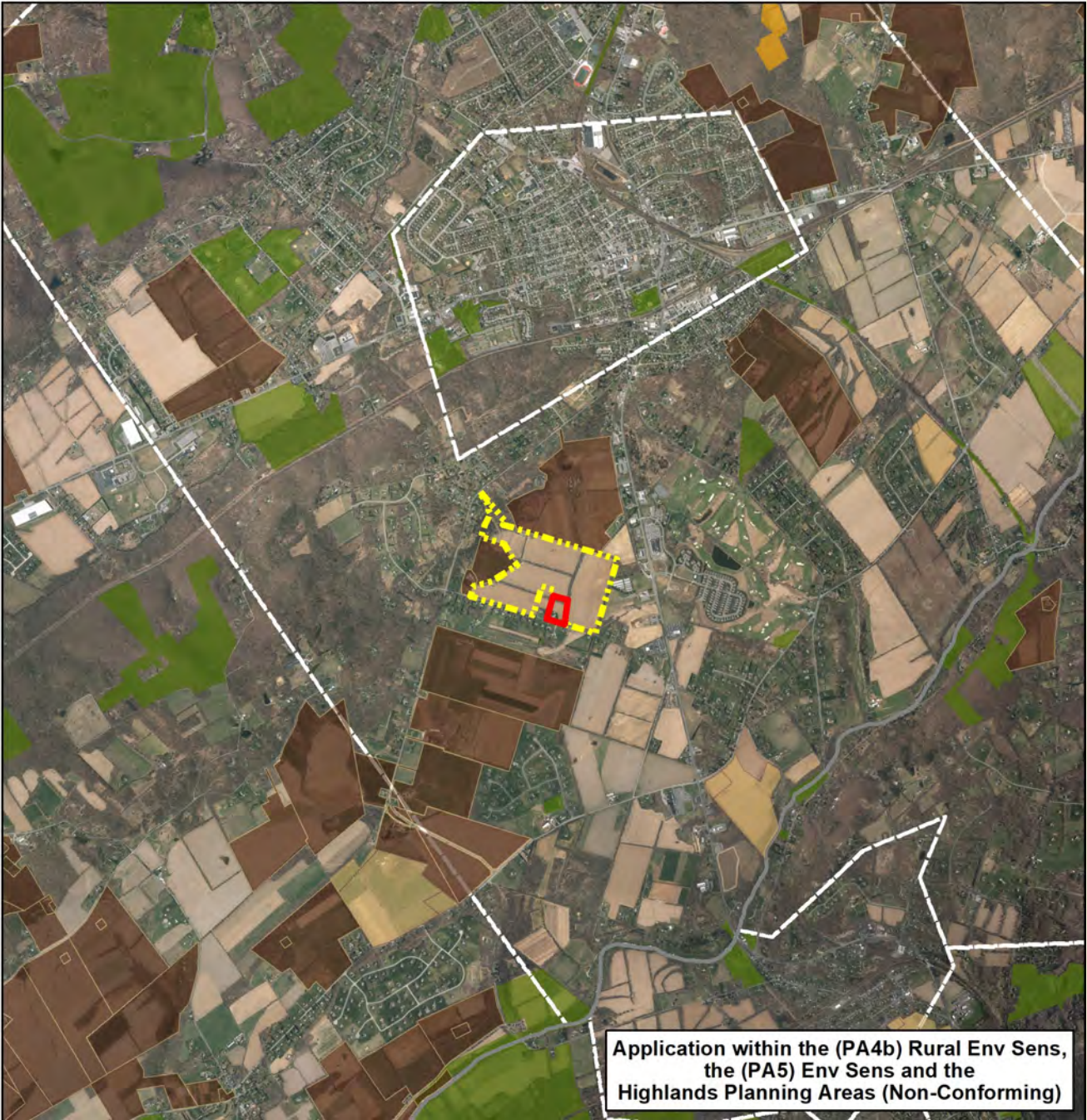


**Slide 9**

Ralph & Dianna Anema  
122.06 Easement Acres  
Washington Twp  
Warren County  
6ac severable exception  
1 RDSO  
87% in corn

County Planning Incentive Grant

-  Property In Question
-  Exceptions
-  Preserved Easements
-  Transfer Development Rights (TDR)  
Preserved: Highlands,  
Pinelands and Municipal
-  Active Applications
-  County Boundaries
-  Municipal Boundaries
-  Pinelands (or Highlands) Development Credits
-  Municipal, County and Non-Profit  
Preserved Open Space, State Owned  
Conservation Easements, & State  
Owned O/S & Recreation Easements


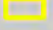



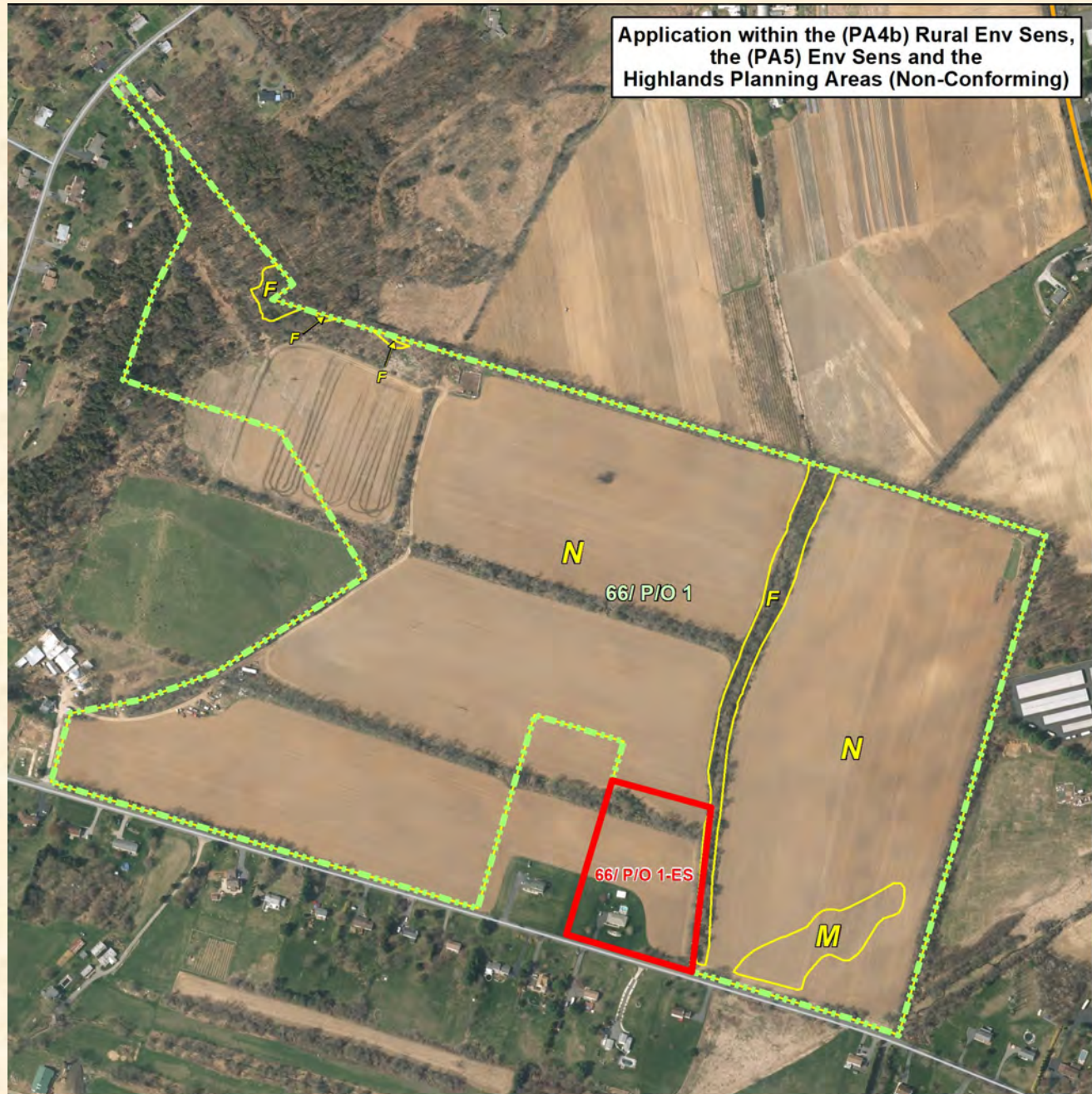
Application within the (PA4b) Rural Env Sens,  
the (PA5) Env Sens and the  
Highlands Planning Areas (Non-Conforming)

Ralph & Dianna Anema  
 122.06 Easement Acres  
 Washington Twp  
 Warren County  
 6ac severable exception  
 1 RDSO  
 87% in corn

County Planning Incentive Grant

Application within the (PA4b) Rural Env Sens,  
 the (PA5) Env Sens and the  
 Highlands Planning Areas (Non-Conforming)

-  Property In Question
-  ES - (Severable) Exception
-  Wetlands Boundaries
-  Primary - Limited Access
-  Federal or State Hwys
-  County Roads
-  Municipal/Local Roads
-  Highlands (or Pinelands) Development Credits
-  Municipal, County and Non-Profit Preserved Open Space, State Owned Conservation Easements, & State Owned O/S & Recreation Easements



**Dale & Donald Smith**  
**78.6 Easement Acres**  
**Alloway Twp, Salem County**  
**No residential opportunities or**  
**exception areas**  
**86% in corn, soybeans, wheat**  
**& vegetables**

**County Planning Incentive Grant**



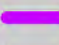
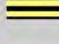

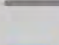




-  Property In Question
-  Exceptions
-  Preserved Easements
-  Transfer Development Rights (TDR)  
Preserved: Highlands,  
Pinelands and Municipal
-  Active Applications
-  County Boundaries
-  Municipal Boundaries
-  Pinelands (or Highlands) Development Credits
-  Municipal, County and Non-Profit  
Preserved Open Space, State Owned  
Conservation Easements, & State  
Owned O/S & Recreation Easements

Dale & Donald Smith  
 78.6 Easement Acres  
 Alloway Twp, Salem County  
 No residential opportunities or  
 exception areas  
 86% in corn, soybeans, wheat  
 & vegetables

County Planning Incentive Grant



-  Property In Question
-  Wetlands Boundaries
-  Primary - Limited Access
-  Federal or State Hwys
-  County Roads
-  Municipal/Local Roads
-  Highlands (or Pinelands) Development Credits
-  Municipal, County and Non-Profit Preserved Open Space, State Owned Conservation Easements, & State Owned O/S & Recreation Easements

Gerald & Carolyn Sleeter  
40 Easement Acres  
Gloucester Twp  
Camden County  
1.2 ac nonseverable exception  
74 % in equine & hay

Preliminary Approval  
Direct Easement Application

-  Property In Question
-  Exceptions
-  Preserved Easements
-  Transfer Development Rights (TDR)  
Preserved: Highlands,  
Pinelands and Municipal
-  Active Applications
-  County Boundaries
-  Municipal Boundaries
-  Pinelands (or Highlands) Development Credits
-  Municipal, County and Non-Profit  
Preserved Open Space, State Owned  
Conservation Easements, & State  
Owned O/S & Recreation Easements




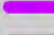
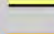
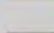


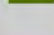


Application within the (PA1) Metro Area

Gerald & Carolyn Sleeter  
 40 Easement Acres  
 Gloucester Twp  
 Camden County  
 1.2 ac nonseverable exception  
 74 % in equine & hay

77% prime soil  
 18% statewide important soil

Preliminary Approval  
 Direct Easement Application

-  Property In Question
-  ES - (Severable) Exception
-  Wetlands Boundaries
-  Primary - Limited Access
-  Federal or State Hwys
-  County Roads
-  Municipal/Local Roads
-  Highlands (or Pinelands) Development Credits
-  Municipal, County and Non-Profit Preserved Open Space, State Owned Conservation Easements, & State Owned O/S & Recreation Easements



**Gerald & Carolyn Sleeter**  
**40 Easement Acres**  
**Gloucester Twp**  
**Camden County**  
**74 % in equine & hay**

**77% prime soil**  
**18% statewide important soil**

**Preliminary Approval**  
**Direct Easement Application**



**Slide 16**



Joseph & Josephine Martinelli  
53.8 Easement Acres  
Hammonton Twp  
Atlantic County  
1.6 ac nonseverable exception  
91% in blueberries

Preliminary Approval  
Direct Easement Application



- Property In Question
- Exceptions
- Preserved Easements
- Transfer Development Rights (TDR)  
Preserved: Highlands,  
Pinelands and Municipal
- Active Applications
- County Boundaries
- Municipal Boundaries
- Pinelands (or Highlands) Development Credits
- Municipal, County and Non-Profit  
Preserved Open Space, State Owned  
Conservation Easements, & State  
Owned O/S & Recreation Easements

Joseph & Josephine Martinelli  
 53.8 Easement Acres  
 Hammonton Twp  
 Atlantic County

1.6 ac nonseverable exception  
 91% in blueberries  
 2% prime soil  
 87% statewide important soil  
 11% unique important soil

Preliminary Approval  
 Direct Easement Application



Application within the Pinelands Ag Production Area

**Dan & Dana Ott**  
**67.7 Easement Acres**  
**Pilesgrove Twp, Salem County**  
**1.25 ac severable exception**  
**2 ac nonseverable exception**  
**81% in soybeans**

**Preliminary Approval**  
**Direct Easement Application**



-  Property In Question
-  Exceptions
-  Preserved Easements
-  Transfer Development Rights (TDR)  
Preserved: Highlands, Pinelands and Municipal
-  Active Applications
-  County Boundaries
-  Municipal Boundaries
-  Pinelands (or Highlands) Development Credits
-  Municipal, County and Non-Profit Preserved Open Space, State Owned Conservation Easements, & State Owned O/S & Recreation Easements

Dan & Dana Ott  
 67.7 Easement Acres  
 Pilesgrove Twp, Salem County  
 1.25 ac severable exception  
 2 ac nonseverable exception  
 81% in soybeans

47% Prime soil  
 47% Statewide Important soil

Preliminary Approval  
 Direct Easement Application



Application within the (PA4) Rural Area

Charles Wible  
72.2 Easement Acres  
Lower Alloways Creek  
Salem County  
1.5 ac nonseverable exception  
\_% in corn & soy

Preliminary Approval  
Direct Easement Application



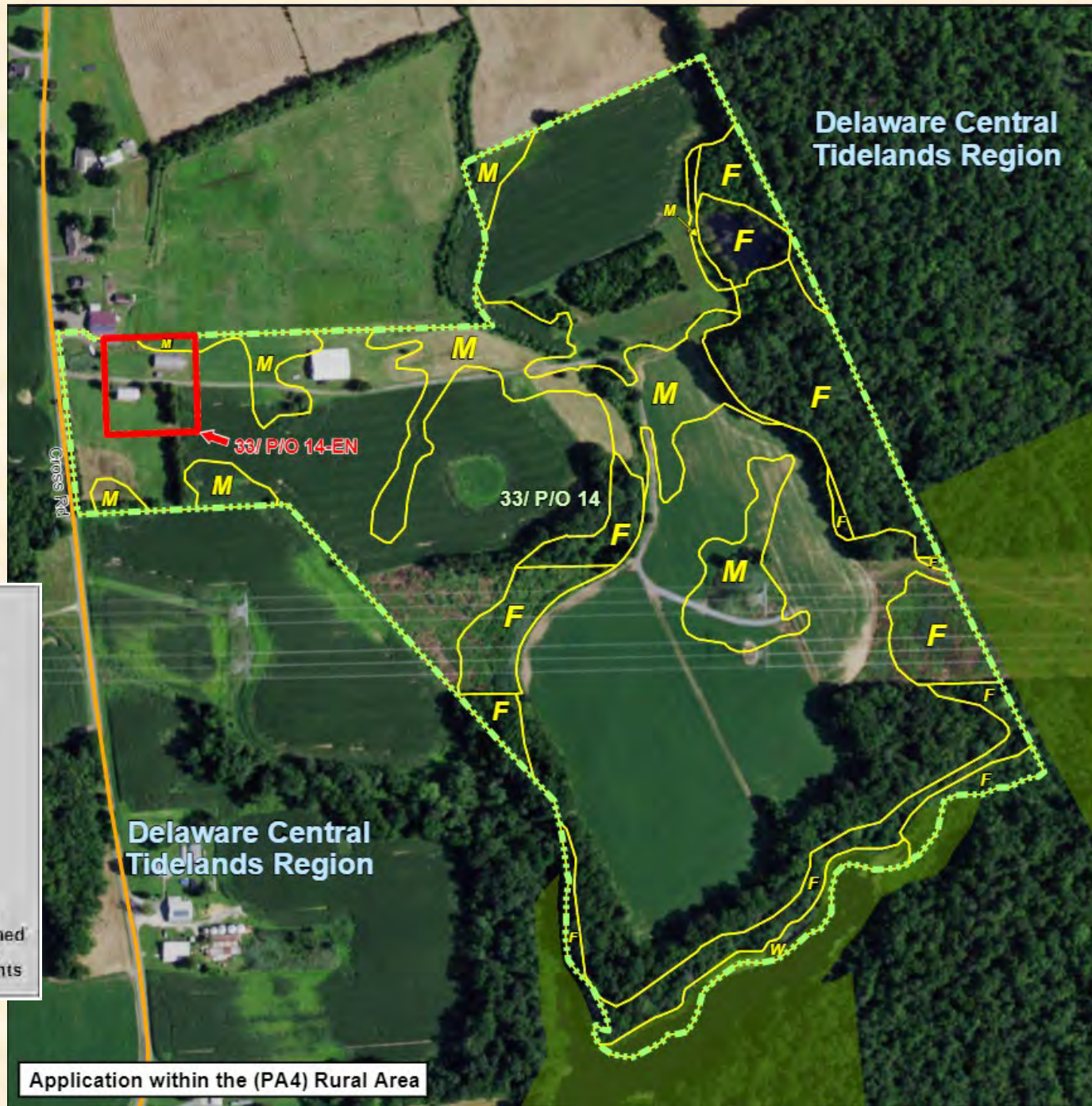
-  Property In Question
-  Exceptions
-  Preserved Easements
-  Transfer Development Rights (TDR)  
Preserved: Highlands,  
Pinelands and Municipal
-  Active Applications
-  County Boundaries
-  Municipal Boundaries
-  Pinelands (or Highlands) Development Credits
-  Municipal, County and Non-Profit  
Preserved Open Space, State Owned  
Conservation Easements, & State  
Owned O/S & Recreation Easements

Application within the (PA 4) Rural Area

Charles Wible  
 72.2 Easement Acres  
 Lower Alloways Creek  
 Salem County  
 1.5 ac nonseverable exception  
 \_% in corn & soy

61% Prime soil  
 27% Statewide Important soil

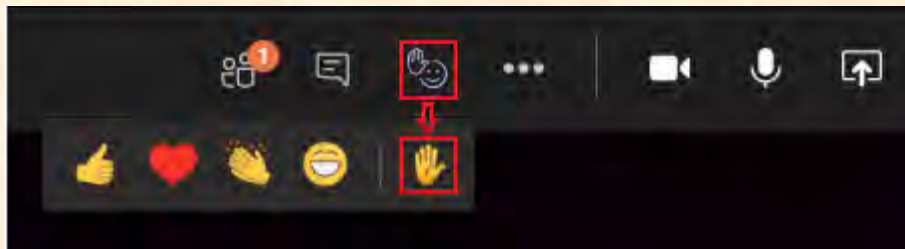
Preliminary Approval  
 Direct Easement Application



-  Property In Question
-  EN - (Non-Severable) Exception
-  Wetlands Boundaries
-  Primary - Limited Access
-  Federal or State Hwys
-  County Roads
-  Municipal/Local Roads
-  Tidelands Boundary
-  Municipal, County and Non-Profit Preserved Open Space, State Owned Conservation Easements, & State Owned O/S & Recreation Easements

## THE SADC HAS CHANGED HOW THE PUBLIC PARTICIPATES IN OUR MONTHLY MEETING

IF A MEMBER OF THE PUBLIC, WHO ATTENDS THE MEETING BY USING TEAMS OR THE URL LINK, WOULD LIKE TO ADDRESS THE COMMITTEE DURING THE PUBLIC PORTION OF THE MEETING, THEY CAN DO SO BY “RAISING YOUR HAND”



SIMPLY CLICK ON THE HAND AND FACE ICON AT THE TOP OF YOUR SCREEN WHILE IN THE MEETING AND THEN CLICK THE RAISE HAND. <https://youtu.be/xRi0hxL4yHo>

**PLEASE WAIT FOR YOUR NAME TO BE CALLED BEFORE YOU BEGIN SPEAKING.**

IF A MEMBER OF THE PUBLIC, WHO ATTENDS THE MEETING BY USING THE CALL-IN FEATURE, WOULD LIKE TO ADDRESS THE COMMITTEE DURING THE PUBLIC PORTION OF THE MEETING, THEY WILL BE GIVEN AN OPPORTUNITY AFTER ALL THE “RAISED HANDS” HAVE SPOKEN.



Please email Jessica Uttal, [Jessica.uttal@ag.nj.gov](mailto:Jessica.uttal@ag.nj.gov), if you need further instructions.