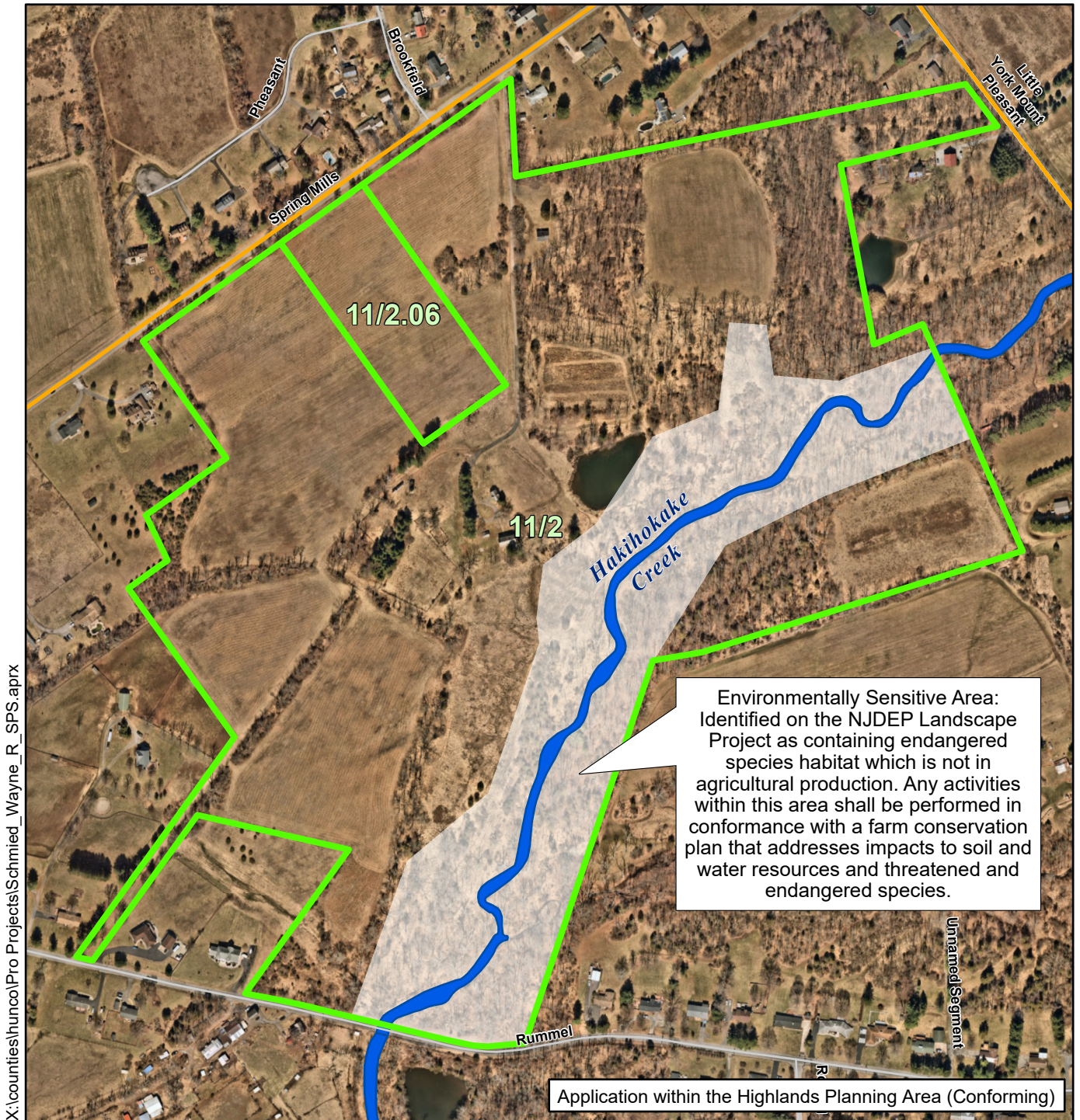
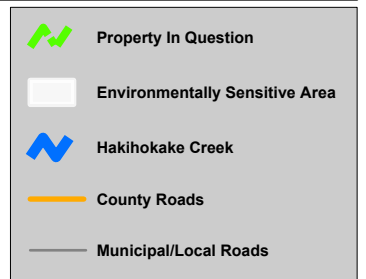


Schedule B



FARMLAND PRESERVATION PROGRAM NJ State Agriculture Development Committee

Schmied, Wayne R.
Block 11 Lots 2 (111.5 ac) & 2.06 (5.9 ac)
Gross Total = 117.4 ac
Holland Twp., Hunterdon County



Sources:
NJ Farmland Preservation Program
NJOT "Parcels and MOD-IV Composite of New Jersey"
NJ Highlands Council "Preservation and Planning Area"
NJPC "New Jersey Pinelands Management Areas"
Nearmap "Vertical Aerial Imagery 2024"

DISCLAIMER: Any use of this product with respect to accuracy and precision shall be the sole responsibility of the user. The configuration and geo-referenced location of parcel polygons in this data layer are approximate and were developed primarily for planning purposes. The geodetic accuracy and precision of the GIS data contained in this file and map shall not be, nor are intended to be, relied upon in matters requiring delineation and location of true ground horizontal and/or vertical controls as would be obtained by an actual ground survey conducted by a licensed Professional Land Surveyor