

NEW JERSEY DEPARTMENT OF CORRECTIONS

Gary M. Lanigan, Commissioner



OFFENDER CHARACTERISTICS REPORT

ON JANUARY 3, 2017

Office of Policy and Planning
January 2017

INTRODUCTION

This report has been developed to provide information regarding offender characteristics in each correctional complex, major institution, and satellite housing-unit under the jurisdiction of the New Jersey Department of Corrections on January 3, 2017. The selected characteristics compiled in this report are Base Offense at Admission, Total Term at Admission, Ethnicity, Age, County of Commitment, and Mandatory Minimum Term.

The Prison Complex includes: New Jersey State Prison, Central Reception and Assignment Facility, East Jersey State Prison, Bayside State Prison, Mid-State Correctional Facility (temporarily closed for renovation), Southern State Correctional Facility, Northern State Prison, South Woods State Prison, Edna Mahan Correctional Facility for Women and the Adult Diagnostic and Treatment Center (ADTC), a facility for adult male sex offenders.

NOTE: In the data tables, separate subtotals are provided for ADTC and Edna Mahan Correctional Facility for Women due to the interest in these unique populations. The remainder of the Prison Complex is labeled “Male Offenders in Other Facilities”.

The Youth Correctional Complex consists of Garden State Youth Correctional Facility, Albert C. Wagner Youth Correctional Facility and Mountainview Youth Correctional Facility.

“Halfway Houses, County Jails, Reentry, St. Francis” include state-sentenced inmates housed in halfway houses, county jails, Reentry, and Central Medical Unit (St. Francis Hospital).

“Not Coded” are records for offenders in the correctional system for whom admission characteristics data had not been entered into the computerized information system as of January 3, 2017.

HIGHLIGHTS

- *Sixty-one percent (61%) of all New Jersey Department of Corrections inmates were committed for crimes against persons which include Homicide, Sexual Assault, Aggravated/Simple Assault, Robbery, Kidnapping, Other Sex Offenses and Other Person Offenses.*
- *Fifteen percent (15%) of all Department of Corrections inmates have been committed for narcotics law violations, including possession, sale and distribution. Eighty-three percent (83%) of all narcotics law violations are sale/distribution offenses.*
- *The median total term for Department of Corrections' inmates is 6 years.*
- *Thirty-eight percent (38%) of all New Jersey Department of Corrections inmates were committed with total terms of 10 years or more. Of the total, six percent (6%) are serving Life Sentences with parole eligibility, and 80 offenders are serving Life Sentences without parole.*
- *Seventy-four percent (74%) of New Jersey Department of Corrections inmates housed in the State System have sentences that include mandatory minimum terms.*
- *Thirty-four percent (34%) of all inmates in the New Jersey Department of Corrections are 30 years of age or younger. The median age for inmates in all facilities is 35.*
- *Sixty-one percent (61%) of New Jersey Department of Corrections' inmates are Black, 22% White, 16% Hispanic, and 1% Asian.*
- *Of the 21 New Jersey counties, ten (Atlantic, Bergen, Camden, Essex, Hudson, Mercer, Middlesex, Monmouth, Passaic and Union) account for 77% of Total Department of Corrections inmates. Essex County is the highest contributor with 15%.*

NOTES

DUE TO SOFTWARE AND ROUNDING:

- **WORKSHEET ROW AND COLUMN TOTALS DO NOT ALWAYS EQUAL 100 PERCENT.**
- **PIE CHART PERCENTAGES DO NOT ALWAYS EQUAL 100%.**
- **PIE CHART PERCENTAGES MAY DIFFER SLIGHTLY FROM WORKSHEET PERCENTAGES.**
- **ACCOMPANYING NARRATIVES REFLECT PIE CHART PERCENTAGES.**

TOTAL INMATES IN NEW JERSEY STATE CORRECTIONAL INSTITUTIONS AND SATELLITE UNITS

TOTAL INMATES		19,619
PRISON COMPLEX	13,972	YOUTH COMPLEX
ADTC	491	GARDEN STATE TOTAL
Bayside – Main	1,143	MOUNTAINVIEW TOTAL
Bayside – Farm	512	Wagner – Main
Bayside – Ancora	254	Wagner – Ad Seg
BAYSIDE TOTAL	1,909	Wagner – Minimum Units
CRAF – Jones Farm	149	WAGNER TOTAL
CRAF – Reception	578	HALFWAY HOUSES, COUNTY JAILS, REENTRY, ST. FRANCIS
CRAF TOTAL	727	Halfway Houses
East Jersey Main	1,173	County Jails
East Jersey Camp	30	Central Medical Unit (St. Francis)
EAST JERSEY TOTAL	1,203	Reentry
EDNA MAHAN TOTAL	646	
NJ STATE PRISON TOTAL	1,587	
Northern State – Main	2,037	
Northern State – Ad Seg Male	341	
NORTHERN STATE TOTAL	2,378	
SOUTHERN STATE TOTAL	1,689	
SOUTH WOODS TOTAL	3,342	

TABLE OF CONTENTS

<u>REPORT NAME</u>	<u>PAGE</u>
<i>OFFENDERS IN NEW JERSEY CORRECTIONAL INSTITUTIONS BY BASE OFFENSE</i>	7
<i>Prison Complex Offenders</i>	8-11
<i>Youth Complex Offenders</i>	12
<i>Offenders in Halfway Houses, County Jails and St. Francis Hospital</i>	13
 <i>OFFENDERS IN NEW JERSEY CORRECTIONAL INSTITUTIONS BY TOTAL TERM AT ADMISSION</i>	 14
<i>Prison Complex Offenders</i>	15-18
<i>Youth Complex Offenders</i>	19
<i>Offenders in Halfway Houses, County Jails and St. Francis Hospital</i>	20
 <i>OFFENDERS IN NEW JERSEY CORRECTIONAL INSTITUTIONS BY MANDATORY MINIMUM TERM</i>	 21
<i>Prison Complex Offenders</i>	22-25
<i>Youth Complex Offenders</i>	26
<i>Offenders in Halfway Houses, County Jails and St. Francis Hospital</i>	27
 <i>OFFENDERS IN NEW JERSEY CORRECTIONAL INSTITUTIONS BY AGE</i>	 28
<i>Prison Complex Offenders</i>	29-32
<i>Youth Complex Offenders</i>	33
<i>Offenders in Halfway Houses, County Jails and St. Francis Hospital</i>	34
 <i>OFFENDERS IN NEW JERSEY CORRECTIONAL INSTITUTIONS BY ETHNIC IDENTIFICATION</i>	 35
<i>Prison Complex Offenders</i>	36-39
<i>Youth Complex Offenders</i>	40
<i>Offenders in Halfway Houses, County Jails and St. Francis Hospital</i>	41
 <i>OFFENDERS IN NEW JERSEY CORRECTIONAL INSTITUTIONS BY COUNTY OF COMMITMENT</i>	 42
<i>Prison Complex Offenders</i>	43-46
<i>Youth Complex Offenders</i>	47
<i>Offenders in Halfway Houses, County Jails and St. Francis Hospital</i>	48

BASE OFFENSE

**OFFENDERS IN NEW JERSEY CORRECTIONAL INSTITUTIONS
ON JANUARY 3, 2017, BY BASE OFFENSE**

In these tabulations, the base offense is the most serious offense at the time of admission. These figures reflect base or controlling offenses at admission only and do not include any offenses in addition to the base offense in the case of multiple sentences at admission. Additional sentences imposed following initial admission to the state correctional system are not included in these data.

- Violent offenses include homicide, sexual assault, aggravated and simple assault, robbery, kidnapping, other sex offenses and other person offenses (i.e. terroristic threats, coercion, larceny from a person, death by auto and negligent manslaughter).
- Property offenses include burglary, arson, theft, forgery, embezzlement, and receiving / possessing stolen property.
- Public policy offenses include racketeering, gambling, corruption, perjury, escape, bail jumping, juvenile and family related offenses, and conspiracy.
- Weapons offenses include weapon possession and operation.
- Drug violations include distribution, manufacture, possession, and use of drugs. Virtually all drug offenses are for sale and distribution rather than for mere possession.

OFFENDERS IN CORRECTIONAL INSTITUTIONS BY BASE OFFENSE

Base Offense	Total		Male Offenders in Other Facilities		Youth Complex		ADTC		Edna Mahan		*Halfway Houses, County Jails, Reentry, St. Francis	
	#	%	#	%	#	%	#	%	#	%	#	%
TOTAL OFFENDERS	19,619	100%	12,835	100%	2,745	100%	491	100%	646	100%	2,902	100%
Violent Offenses	11,923	61%	8,636	67%	1,619	59%	490	100%	394	61%	784	27%
Property Offenses	1,655	8%	1,036	8%	190	7%	0	0%	101	16%	328	11%
Public Policy	626	3%	395	3%	79	3%	0	0%	20	3%	132	5%
Weapons	2,378	12%	1,091	9%	568	21%	0	0%	22	3%	697	24%
Drugs	2,950	15%	1,660	13%	289	11%	0	0%	89	14%	912	31%
Not Coded	87	0%	17	0%	0	0%	1	0%	20	3%	49	2%

- Inmates with violent offenses comprise 67% of Male Offenders in Other Facilities, 59% of the Youth Complex, 100% of ADTC, 61% of Edna Mahan, and 27% of Halfway Houses, County Jails, Reentry, and St. Francis.
- * Halfway Houses, Reentry, County Jails, and Central Medical Unit (Saint Francis Hospital).

Prison Complex Offenders By Base Offense

Institution	Total	Violent Offenses	Homicide	Sexual Assault	Assault	Robbery	Kidnap	Other Sex	Other Person	Property	Public Policy	Weapons	Drugs	Not Coded
Bayside Main	1,143 100%	628 55%	171 15%	25 2%	130 11%	271 24%	5 0%	20 2%	6 1%	117 10%	50 4%	153 13%	195 17%	0 0%
Bayside Farm	512 100%	235 46%	50 10%	0 0%	61 12%	120 23%	2 0%	1 0%	1 0%	98 19%	18 4%	55 11%	106 21%	0 0%
Bayside Ancora	254 100%	93 37%	20 8%	0 0%	17 7%	55 22%	0 0%	0 0%	1 0%	39 15%	9 4%	25 10%	88 35%	0 0%
Bayside Total	1,909 100%	956 50%	241 13%	25 1%	208 11%	446 23%	7 0%	21 1%	8 0%	254 13%	77 4%	233 12%	389 20%	0 0%
CRAF Jones Farm	149 100%	8 5%	4 3%	0 0%	2 1%	1 1%	0 0%	1 1%	0 0%	64 43%	8 5%	0 0%	69 46%	0 0%
CRAF Reception	578 100%	303 52%	16 3%	48 8%	51 9%	92 16%	3 1%	89 15%	4 1%	86 15%	23 4%	58 10%	103 18%	5 1%
CRAF Total	727 100%	311 43%	20 3%	48 7%	53 7%	93 13%	3 0%	90 12%	4 1%	150 21%	31 4%	58 8%	172 24%	5 1%
East Jersey Main	1,173 100%	1,096 93%	663 57%	79 7%	48 4%	249 21%	48 4%	8 1%	1 0%	14 1%	10 1%	24 2%	29 2%	0 0%
East Jersey Camp	30 100%	23 77%	2 7%	0 0%	0 0%	21 70%	0 0%	0 0%	0 0%	1 3%	2 7%	2 7%	2 7%	0 0%
East Jersey Total	1,203 100%	1,119 93%	665 55%	79 7%	48 4%	270 22%	48 4%	8 1%	1 0%	15 1%	12 1%	26 2%	31 3%	0 0%

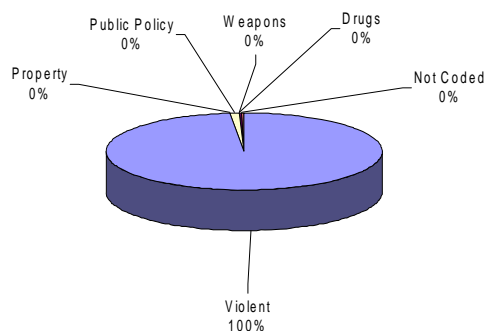
Prison Complex Offenders By Base Offense

Institution	Total	Violent Offenses	Homicide	Sexual Assault	Assault	Robbery	Kidnap	Other Sex	Other Person	Property	Public Policy	Weapons	Drugs	Not Coded
NJ State Prison	1,587 100%	1,443 91%	991 62%	81 5%	46 3%	259 16%	48 3%	11 1%	7 0%	31 2%	18 1%	33 2%	51 3%	11 1%
Northern Main	2,037 100%	1,404 69%	518 25%	116 6%	177 9%	507 25%	35 2%	44 2%	7 0%	142 7%	69 3%	166 8%	256 13%	0 0%
Northern Ad. Seg. Male	341 100%	180 53%	32 9%	5 1%	39 11%	91 27%	2 1%	10 3%	1 0%	46 13%	12 4%	41 12%	62 18%	0 0%
Northern Total	2,378 100%	1,584 67%	550 23%	121 5%	216 9%	598 25%	37 2%	54 2%	8 0%	188 8%	81 3%	207 9%	318 13%	0 0%
Southern	1,689 100%	752 45%	93 6%	92 5%	161 10%	241 14%	8 0%	152 9%	5 0%	235 14%	71 4%	239 14%	392 23%	0 0%
South Woods	3,342 100%	2,471 74%	747 22%	408 12%	323 10%	719 22%	64 2%	202 6%	8 0%	163 5%	105 3%	295 9%	307 9%	1 0%
Subtotal Male Offenders in Other Facilities	12,835 100%	8,636 67%	3,307 26%	854 7%	1,055 8%	2,626 20%	215 2%	538 4%	41 0%	1,036 8%	395 3%	1091 9%	1,660 13%	17 0%

Prison Complex Offenders By Base Offense

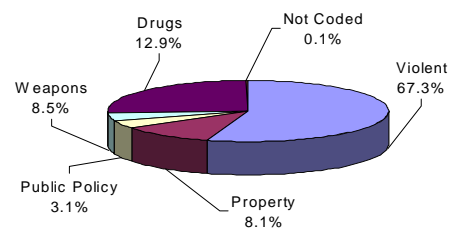
Institution	Total	Violent Offenses	Homicide	Sexual Assault	Assault	Robbery	Kidnap	Other Sex	Other Person	Property	Public Policy	Weapons	Drugs	Not Coded
ADTC	491	490	2	428	0	4	11	42	3	0	0	0	0	1
	100%	100%	0%	87%	0%	1%	2%	9%	1%	0%	0%	0%	0%	0%
Subtotal	13,326	9,126	3,309	1,282	1,055	2,630	226	580	44	1,036	395	1091	1,660	18
	100%	68%	25%	10%	8%	20%	2%	4%	0%	8%	3%	8%	12%	0%
Mahan - Female Prison	646	394	186	11	63	110	10	11	3	101	20	22	89	20
	100%	61%	29%	2%	10%	17%	2%	2%	0%	16%	3%	3%	14%	3%
Total Prison Complex	13,972	9,520	3,495	1,293	1,118	2,740	236	591	47	1,137	415	1113	1,749	38
	100%	68%	25%	9%	8%	20%	2%	4%	0%	8%	3%	8%	13%	0%

ADTC



Virtually all offenders at ADTC were committed for violent offenses.

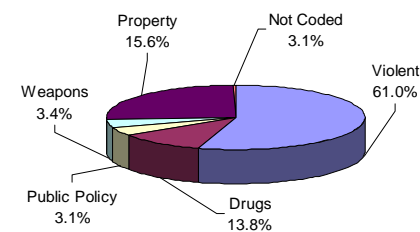
MALE OFFENDERS IN OTHER FACILITIES



Sixty-seven percent (67.3%) of Male Offenders in Other Facilities were convicted of a violent offense.

Twelve percent (12.9%) of all Male Offenders in Other Facilities were convicted of drug offenses.

FEMALE OFFENDERS



Violent offenses were the most frequent commitment-offenses at Edna Mahan (61.0%).

Thirteen percent (13.8%) of female inmates were committed for drug offenses.

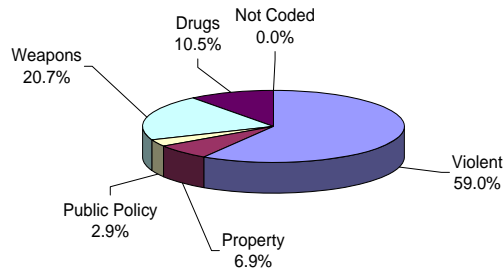
Youth Complex Offenders By Base Offense

Institution	Total	Violent Offenses	Homicide	Sexual Assault	Assault	Robbery	Kidnap	Other Sex	Other Person	Property	Public Policy	Weapons	Drugs	Not Coded
Garden State	1,417	907	134	57	197	476	10	30	3	71	34	282	123	0
	100%	64%	9%	4%	14%	34%	1%	2%	0%	5%	2%	20%	9%	0%
Mountainview	675	310	28	21	72	169	1	17	2	71	27	176	91	0
	100%	46%	4%	3%	11%	25%	0%	3%	0%	11%	4%	26%	13%	0%
Wagner Main	305	214	39	5	37	126	4	3	0	15	7	43	26	0
	100%	70%	13%	2%	12%	41%	1%	1%	0%	5%	2%	14%	9%	0%
Wagner Ad. Seg.	260	154	22	11	24	91	1	5	0	22	9	52	23	0
	100%	59%	8%	4%	9%	35%	0%	2%	0%	8%	3%	20%	9%	0%
Wagner Minimum Units	88	34	7	0	3	23	1	0	0	11	2	15	26	0
	100%	39%	8%	0%	3%	26%	1%	0%	0%	13%	2%	17%	30%	0%
Wagner Total	653	402	68	16	64	240	6	8	0	48	18	110	75	0
	100%	62%	10%	2%	10%	37%	1%	1%	0%	7%	3%	17%	11%	0%
Total Youth Complex	2,745	1,619	230	94	333	885	17	55	5	190	79	568	289	0
	100%	59%	8%	3%	12%	32%	1%	2%	0%	7%	3%	21%	11%	0%

Offenders In Halfway Houses, County Jails, Reentry, and St. Francis By Base Offense

Institution	Total	Violent Offenses	Homicide	Sexual Assault	Assault	Robbery	Kidnap	Other Sex	Other Person	Property	Public Policy	Weapons	Drugs	Not Coded
Central Medical Unit	3	3	1	0	2	0	0	0	0	0	0	0	0	0
	100%	100%	33%	0%	67%	0%	0%	0%	0%	0%	0%	0%	0%	0%
County Jail	70	8	0	1	3	1	0	2	1	8	0	1	5	48
	100%	11%	0%	1%	4%	1%	0%	3%	1%	11%	0%	1%	7%	69%
Reentry	147	82	12	0	22	47	0	1	0	13	8	25	19	0
	100%	56%	8%	0%	15%	32%	0%	1%	0%	9%	5%	17%	13%	0%
Halfway House	2,682	691	92	1	175	408	1	10	4	307	124	671	888	1
	100%	26%	3%	0%	7%	15%	0%	0%	0%	11%	5%	25%	33%	0%
Total Halfway Houses, County Jails, Reentry, St. Francis	2,902	784	105	2	202	456	1	13	5	328	132	697	912	49
	100%	27%	4%	0%	7%	16%	0%	0%	0%	11%	5%	24%	31%	2%

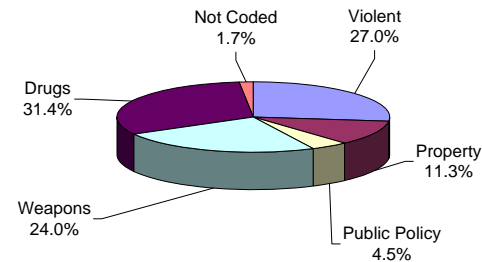
YOUTH COMPLEX



Fifty-nine percent (59.0%) of offenders housed in the youth complex were incarcerated for violent offenses.

Ten percent (10.5%) of offenders housed in the youth complex were incarcerated for drug offenses and 6.9% for property offenses.

HALFWAY HOUSES, COUNTY JAILS, REENTRY, ST. FRANCIS



Offenders housed in county jails, halfway houses, Reentry, and St. Francis are less serious offenders than the Male Offenders in Other Facilities (i.e. 27.0% violent offenders vs. 67.3% Male Offenders in Other Facilities with violent offenses).

Thirty-one percent (31.4%) of offenders housed in Halfway Houses, County Jails, Reentry, and St. Francis were committed for drug offenses.

TOTAL MAXIMUM TERM AT ADMISSION

**OFFENDERS IN NEW JERSEY CORRECTIONAL INSTITUTIONS
ON JANUARY 3, 2017, BY TOTAL TERM AT ADMISSION**

Total term at admission is the total maximum term imposed for each offender at the time of commitment from the community or from parole. This includes the aggregate term for those admitted with multiple sentences. Additional sentences received following initial admission are not reflected or included in the data.

OFFENDERS IN NEW JERSEY CORRECTIONAL INSTITUTIONS BY TOTAL TERM AT ADMISSION

Total Term	Total		Male Offenders in Other Facilities		Youth Complex		ADTC		Edna Mahan		Halfway Houses, County Jails, Reentry, St. Francis	
	#	%	#	%	#	%	#	%	#	%	#	%
TOTAL OFFENDERS	19,619	100%	12,835	100%	2,745	100%	491	100%	646	100%	2,902	100%
1-2 Years	937	5%	722	6%	98	4%	8	2%	28	4%	81	3%
3 Years	2,264	12%	1,235	10%	403	15%	15	3%	115	18%	496	17%
4 Years	1,551	8%	845	7%	248	9%	15	3%	66	10%	377	13%
5 Years	3,644	19%	1,859	14%	800	29%	47	10%	112	17%	826	28%
6 Years	981	5%	514	4%	208	8%	27	5%	31	5%	201	7%
7 Years	1,203	6%	666	5%	263	10%	42	9%	28	4%	204	7%
8-9 Years	1,176	6%	685	5%	194	7%	67	14%	27	4%	203	7%
10 Years	1,189	6%	734	6%	192	7%	66	13%	29	4%	168	6%
11-14 Years	1,111	6%	780	6%	128	5%	51	10%	38	6%	114	4%
15 Years	591	3%	436	3%	51	2%	33	7%	20	3%	51	2%
16-20 Years	1,204	6%	946	7%	78	3%	59	12%	41	6%	80	3%
21+ Years	2,255	11%	2,046	16%	39	1%	58	12%	77	12%	35	1%
Life With Parole	1,113	6%	1,084	8%	0	0%	3	1%	24	4%	2	0%
Life Without Parole	80	0%	80	1%	0	0%	0	0%	0	0%	0	0%
Not Coded	320	2%	203	2%	43	2%	0	0%	10	2%	64	2%

Among New Jersey Adult Correctional Offenders:

- The median term for adult offenders is 6 years.
- Forty-four percent (44%) are serving terms of 1-5 years.
- Seventeen percent (17%) are serving terms of 6-9 years.
- Thirty-eight percent (38%) are serving terms of 10 years or more, which includes 1,113 offenders serving life and 80 serving life without parole sentences.
- Two percent (2%) were not coded.

Prison Complex Offenders By Total Term At Admission

Institution	Total	1-2 Years	3 Years	4 Years	5 Years	6 Years	7 Years	8-9 Years	10 Years	11-14 Years	15 Years	16-20 Years	20+ Years	Life With Parole	Life Without Parole	Not Coded
Bayside Main	1,143 100%	63 6%	126 11%	94 8%	236 21%	74 6%	73 6%	85 7%	87 8%	88 8%	40 3%	62 5%	74 6%	22 2%	0 0%	19 2%
Bayside Farm	512 100%	34 7%	91 18%	47 9%	93 18%	19 4%	33 6%	24 5%	41 8%	39 8%	22 4%	30 6%	24 5%	0 0%	0 0%	15 3%
Bayside Ancora	254 100%	17 7%	46 18%	47 19%	50 20%	16 6%	15 6%	12 5%	18 7%	11 4%	6 2%	5 2%	3 1%	0 0%	0 0%	8 3%
Bayside Total	1,909 100%	114 6%	263 14%	188 10%	379 20%	109 6%	121 6%	121 6%	146 8%	138 7%	68 4%	97 5%	101 5%	22 1%	0 0%	42 2%
CRAF Jones Farm	149 100%	11 7%	51 34%	35 23%	27 18%	6 4%	3 2%	3 2%	0 0%	0 0%	0 0%	0 0%	0 0%	0 0%	0 0%	13 9%
CRAF Reception	578 100%	156 27%	98 17%	68 12%	125 22%	13 2%	13 2%	21 4%	13 2%	10 2%	6 1%	6 1%	1 0%	0 0%	0 0%	48 8%
CRAF Total	727 100%	167 23%	149 20%	103 14%	152 21%	19 3%	16 2%	24 3%	13 2%	10 1%	6 1%	6 1%	1 0%	0 0%	0 0%	61 8%
East Jersey Main	1,173 100%	3 0%	11 1%	8 1%	14 1%	5 0%	8 1%	12 1%	26 2%	74 6%	48 4%	183 16%	548 47%	230 20%	2 0%	1 0%
East Jersey Camp	30 100%	0 0%	0 0%	1 3%	0 0%	2 7%	0 0%	0 0%	7 23%	9 30%	3 10%	4 13%	2 7%	0 0%	0 0%	2 7%
East Jersey Total	1,203 100%	3 0%	11 1%	9 1%	14 1%	7 1%	8 1%	12 1%	33 3%	83 7%	51 4%	187 16%	550 46%	230 19%	2 0%	3 0%

Prison Complex Offenders By Total Term At Admission

Institution	Total	1-2 Years	3 Years	4 Years	5 Years	6 Years	7 Years	8-9 Years	10 Years	11-14 Years	15 Years	16-20 Years	20+ Years	Life With Parole	Life Without Parole	Not Coded
NJ State Prison	1,587 100%	20 1%	38 2%	32 2%	54 3%	9 1%	14 1%	28 2%	29 2%	48 3%	17 1%	63 4%	637 40%	505 32%	76 5%	17 1%
Northern Main	2,037 100%	89 4%	174 9%	117 6%	273 13%	81 4%	113 6%	120 6%	157 8%	161 8%	100 5%	204 10%	278 14%	152 7%	1 0%	17 1%
Northern Ad Seg Male	341 100%	13 4%	51 15%	35 10%	81 24%	22 6%	18 5%	33 10%	18 5%	16 5%	6 2%	18 5%	25 7%	4 1%	0 0%	1 0%
Northern Total	2,378 100%	102 4%	225 9%	152 6%	354 15%	103 4%	131 6%	153 6%	175 7%	177 7%	106 4%	222 9%	303 13%	156 7%	1 0%	18 1%
Southern	1,689 100%	158 9%	303 18%	187 11%	430 25%	121 7%	125 7%	115 7%	71 4%	50 3%	20 1%	40 2%	27 2%	4 0%	0 0%	38 2%
South Woods	3,342 100%	158 5%	246 7%	174 5%	476 14%	146 4%	251 8%	232 7%	267 8%	274 8%	168 5%	331 10%	427 13%	167 5%	1 0%	24 1%
Subtotal Male Offenders in Other Facilities	12,835 100%	722 6%	1,235 10%	845 7%	1,859 14%	514 4%	666 5%	685 5%	734 6%	780 6%	436 3%	946 7%	2,046 16%	1,084 8%	80 1%	203 2%

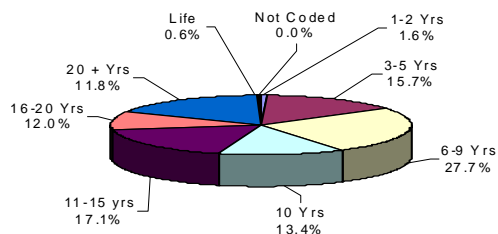
Prison Complex Offenders By Total Term At Admission

Institution	Total	1-2 Years	3 Years	4 Years	5 Years	6 Years	7 Years	8-9 Years	10 Years	11-14 Years	15 Years	16-20 Years	20+ Years	Life With Parole	Life Without Parole	Not Coded
ADTC	491 100%	8 2%	15 3%	15 3%	47 10%	27 5%	42 9%	67 14%	66 13%	51 10%	33 7%	59 12%	58 12%	3 1%	0 0%	0 0%
SUBTOTAL	13,326 100%	730 5%	1,250 9%	860 6%	1,906 14%	541 4%	708 5%	752 6%	800 6%	831 6%	469 4%	1,005 8%	2,104 16%	1,087 8%	80 1%	203 2%
Mahan - Female Prison	646 100%	28 4%	115 18%	66 10%	112 17%	31 5%	28 4%	27 4%	29 4%	38 6%	20 3%	41 6%	77 12%	24 4%	0 0%	10 2%
Total Prison Complex	13,972 100%	758 5%	1,365 10%	926 7%	2,018 14%	572 4%	736 5%	779 6%	829 6%	869 6%	489 3%	1,046 7%	2,181 16%	1,111 8%	80 1%	213 2%

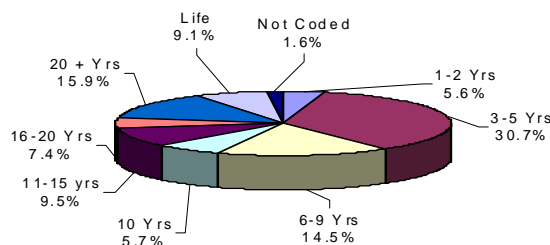
ADTC

MALE OFFENDERS IN OTHER FACILITIES

FEMALE OFFENDERS



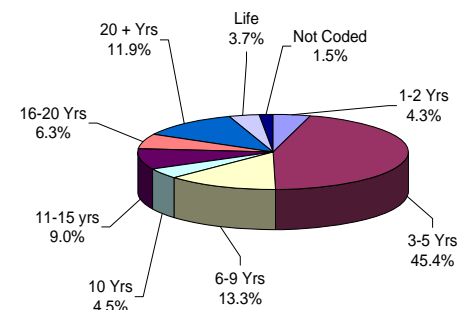
The median term at ADTC is 10 years.



The median term for Male Offenders in Other Facilities is 7 years.

Thirty-two percent (32.4%) of all Male Offenders in Other Facilities are serving sentences of 16 years or more.

Eighty-one percent (81%) of all offenders at New Jersey State Prison are serving sentences of 16 years or more, with 505 Life With Parole and 76 Life Without Parole.



The median term at Edna Mahan is 5 years.

Forty-nine percent (49.7%) of the female offenders at Edna Mahan Correctional Facility for Women are serving sentences of 5 years or less.

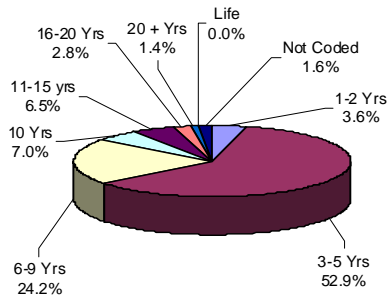
Youth Complex Offenders By Total Term At Admission

Institution	Total	1-2 Years	3 Years	4 Years	5 Years	6 Years	7 Years	8-9 Years	10 Years	11-14 Years	15 Years	16-20 Years	20+ Years	Life With Parole	Life Without Parole	Not Coded
Garden State	1,417	35	171	97	409	105	150	111	117	92	32	53	27	0	0	18
	100%	2%	12%	7%	29%	7%	11%	8%	8%	6%	2%	4%	2%	0%	0%	1%
Mountainview	675	35	140	98	214	55	53	34	23	7	0	1	0	0	0	15
	100%	5%	21%	15%	32%	8%	8%	5%	3%	1%	0%	0%	0%	0%	0%	2%
Wagner Main	305	4	48	16	72	23	38	20	34	16	10	14	6	0	0	4
	100%	1%	16%	5%	24%	8%	12%	7%	11%	5%	3%	5%	2%	0%	0%	1%
Wagner Ad Seg	260	17	29	30	82	20	15	21	12	9	4	10	6	0	0	5
	100%	7%	11%	12%	32%	8%	6%	8%	5%	3%	2%	4%	2%	0%	0%	2%
Wagner Minimum Units	88	7	15	7	23	5	7	8	6	4	5	0	0	0	0	1
	100%	8%	17%	8%	26%	6%	8%	9%	7%	5%	6%	0%	0%	0%	0%	1%
Wagner Total	653	28	92	53	177	48	60	49	52	29	19	24	12	0	0	10
	100%	4%	14%	8%	27%	7%	9%	8%	8%	4%	3%	4%	2%	0%	0%	2%
Total Youth Complex	2,745	98	403	248	800	208	263	194	192	128	51	78	39	0	0	43
	100%	4%	15%	9%	29%	8%	10%	7%	7%	5%	2%	3%	1%	0%	0%	2%

Offenders In Halfway Houses, County Jails, Reentry, and St. Francis By Total Term At Admission

Institution	Total	1-2 Years	3 Years	4 Years	5 Years	6 Years	7 Years	8-9 Years	10 Years	11-14 Years	15 Years	16-20 Years	20+ Years	Life	Capital	Not Coded
Central Medical Unit	3	1	0	0	0	1	0	0	0	0	0	0	0	1	0	0
	100%	33%	0%	0%	0%	33%	0%	0%	0%	0%	0%	0%	0%	33%	0%	0%
County Jail	70	3	6	6	4	1	0	0	1	0	0	0	0	0	0	49
	100%	4%	9%	9%	6%	1%	0%	0%	1%	0%	0%	0%	0%	0%	0%	70%
Reentry	147	4	29	26	33	11	11	9	9	6	3	4	1	0	0	1
	100%	3%	20%	18%	22%	7%	7%	6%	6%	4%	2%	3%	1%	0%	0%	1%
Halfway House	2,682	73	461	345	789	188	193	194	158	108	48	76	34	1	0	14
	100%	3%	17%	13%	29%	7%	7%	7%	6%	4%	2%	3%	1%	0%	0%	1%
Total Halfway Houses, County Jails, Reentry, St. Francis	2,902	81	496	377	826	201	204	203	168	114	51	80	35	2	0	64
	100%	3%	17%	13%	28%	7%	7%	7%	6%	4%	2%	3%	1%	0%	0%	2%

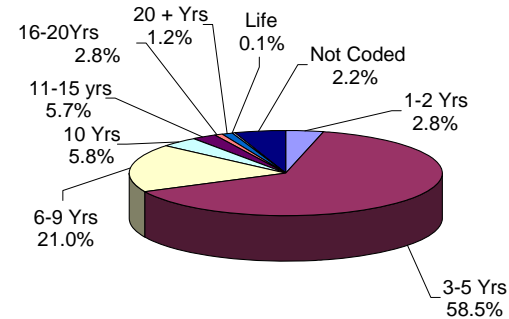
YOUTH COMPLEX



The median youth complex term is 5 years.

No youth complex offenders are currently serving life sentences.

HALFWAY HOUSES, COUNTY JAILS, REENTRY, ST. FRANCIS



The median term for offenders housed in Halfway Houses, County Jails, Reentry, and St. Francis is 5 years.

Sixty-one percent (61.3%) of offenders housed in Halfway Houses, County Jails, Reentry, and St. Francis are serving terms of 5 years or less.

OFFENDER CHARACTERISTICS REPORT

MANDATORY MINIMUM TERM

**OFFENDERS IN NEW JERSEY CORRECTIONAL INSTITUTIONS
ON JANUARY 3, 2017, BY MANDATORY MINIMUM TERM**

In New Jersey, since 1979, the courts have utilized mandatory minimum sentences. This means that an offender must serve the entire minimum sentence before being eligible for parole consideration. Mandatory minimum terms are not reduced by earned credits (commutation, minimum security, or work).

OFFENDERS IN CORRECTIONAL INSTITUTIONS BY MANDATORY MINIMUM TERM

Mandatory Minimum Term	Total		Male Offenders in Other Facilities		Youth Complex		ADTC		Edna Mahan		Halfway Houses, County Jails, Reentry, St. Francis	
	#	%	#	%	#	%	#	%	#	%	#	%
TOTAL OFFENDERS	14,665	100%	9,523	100%	2,137	100%	412	100%	409	100%	2,184	100%
<18 Months	626	4%	219	2%	153	7%	0	0%	15	4%	239	11%
18 Months	305	2%	142	1%	43	2%	0	0%	3	1%	117	5%
2 Years	566	4%	313	3%	56	3%	1	0%	12	3%	184	8%
3 Years	1,585	11%	754	8%	248	12%	5	1%	38	9%	540	25%
4 Years	1,608	11%	796	8%	382	18%	7	2%	23	6%	400	18%
5 Years	1,659	11%	910	10%	375	18%	41	10%	42	10%	291	13%
6-9 Years	2,819	19%	1,653	17%	631	30%	179	43%	86	21%	270	12%
10 Years	183	1%	131	1%	21	1%	13	3%	5	1%	13	1%
11-14 Years	1,357	9%	1018	11%	139	7%	74	18%	53	13%	73	3%
15 Years	227	2%	170	2%	17	1%	22	5%	6	1%	12	1%
16-19 Years	980	7%	828	9%	43	2%	35	8%	43	11%	31	1%
20-24 Years	530	4%	467	5%	26	1%	12	3%	20	5%	5	0%
25-29 Years	374	3%	353	4%	2	0%	15	4%	4	1%	0	0%
30 Years	770	5%	728	8%	0	0%	4	1%	30	7%	8	0%
30+ Years	1,076	7%	1041	11%	1	0%	4	1%	29	7%	1	0%

- Seventy-four percent (74.7%) of all adult offenders have mandatory minimum terms (14,665 out of 19,619).
- The median mandatory minimum term is 5.5 years.
- Twenty-eight percent (28%) of those with mandatory minimum terms have mandatory minimum terms of 15 years or more.

Prison Complex Offenders By Mandatory Minimum Term

Institution	Total	< 18 Months	18 Months	2 Years	3 Years	4 Years	5 Years	6-9 Years	10 Years	11-14 Years	15 Years	16-19 Years	20-24 Years	25-29 Years	30 Years	30+ Years
Bayside Main	816 100%	29 4%	16 2%	38 5%	96 12%	114 14%	115 14%	174 21%	16 2%	92 11%	12 1%	61 7%	22 3%	9 1%	19 2%	3 0%
Bayside Farm	322 100%	19 6%	13 4%	28 9%	44 14%	27 8%	25 8%	67 21%	8 2%	48 15%	6 2%	22 7%	5 2%	0 0%	10 3%	0 0%
Bayside Ancora	158 100%	7 4%	8 5%	19 12%	40 25%	17 11%	18 11%	31 20%	1 1%	11 7%	0 0%	4 3%	1 1%	0 0%	1 1%	0 0%
Bayside Total	1,296 100%	55 4%	37 3%	85 7%	180 14%	158 12%	158 12%	272 21%	25 2%	151 12%	18 1%	87 7%	28 2%	9 1%	30 2%	3 0%
CRAF Jones Farm	38 100%	8 21%	4 11%	15 39%	6 16%	0 0%	3 8%	2 5%	0 0%	0 0%	0 0%	0 0%	0 0%	0 0%	0 0%	0 0%
CRAF Reception	201 100%	24 12%	6 3%	24 12%	34 17%	29 14%	37 18%	34 17%	1 0%	6 3%	1 0%	4 2%	1 0%	0 0%	0 0%	0 0%
CRAF Total	239 100%	32 13%	10 4%	39 16%	40 17%	29 12%	40 17%	36 15%	1 0%	6 3%	1 0%	4 2%	1 0%	0 0%	0 0%	0 0%
East Jersey Main	1,120 100%	3 0%	1 0%	3 0%	7 1%	10 1%	16 1%	59 5%	15 1%	128 11%	34 3%	196 18%	150 13%	130 12%	241 22%	127 11%
East Jersey Camp	29 100%	0 0%	0 0%	0 0%	0 0%	1 3%	2 7%	12 41%	1 3%	8 28%	0 0%	5 17%	0 0%	0 0%	0 0%	0 0%
East Jersey Total	1,149 100%	3 0%	1 0%	3 0%	7 1%	11 1%	18 2%	71 6%	16 1%	136 12%	34 3%	201 17%	150 13%	130 11%	241 21%	127 11%

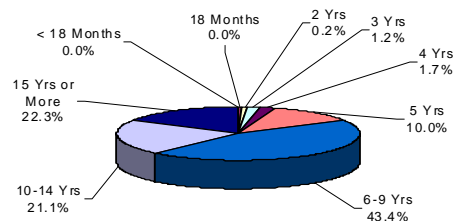
Prison Complex Offenders By Mandatory Minimum Term

Institution	Total	< 18 Months	18 Months	2 Years	3 Years	4 Years	5 Years	6-9 Years	10 Years	11-14 Years	15 Years	16-19 Years	20-24 Years	25-29 Years	30 Years	30+ Years
NJ State Prison	1,406 100%	6 0%	6 0%	5 0%	22 2%	18 1%	30 2%	81 6%	8 1%	56 4%	15 1%	75 5%	31 2%	81 6%	185 13%	787 56%
Northern Main	1,577 100%	22 1%	17 1%	43 3%	129 8%	134 8%	140 9%	319 20%	24 2%	236 15%	31 2%	159 10%	84 5%	58 4%	128 8%	53 3%
Northern Ad Seg Male	240 100%	7 3%	5 2%	18 8%	33 14%	31 13%	30 13%	59 25%	5 2%	18 8%	0 0%	13 5%	8 3%	5 2%	8 3%	0 0%
Northern Total	1,817 100%	29 2%	22 1%	61 3%	162 9%	165 9%	170 9%	378 21%	29 2%	254 14%	31 2%	172 9%	92 5%	63 3%	136 7%	53 3%
Southern	995 100%	50 5%	39 4%	64 6%	187 19%	197 20%	178 18%	179 18%	5 1%	44 4%	10 1%	25 3%	10 1%	1 0%	6 1%	0 0%
South Woods	2,621 100%	44 2%	27 1%	56 2%	156 6%	218 8%	316 12%	636 24%	47 2%	371 14%	61 2%	264 10%	155 6%	69 3%	130 5%	71 3%
Subtotal Male Offenders in Other Facilities	9,523 100%	219 2%	142 1%	313 3%	754 8%	796 8%	910 10%	1,653 17%	131 1%	1,018 11%	170 2%	828 9%	467 5%	353 4%	728 8%	1,041 11%

Prison Complex Offenders By Mandatory Minimum Term

Institution	Total	< 18 Months	18 Months	2 Years	3 Years	4 Years	5 Years	6-9 Years	10 Years	11-14 Years	15 Years	16-19 Years	20-24 Years	25-29 Years	30 Years	30+ Years
ADTC	412 100%	0 0%	0 0%	1 0%	5 1%	7 2%	41 10%	179 43%	13 3%	74 18%	22 5%	35 8%	12 3%	15 4%	4 1%	4 1%
Subtotal	9,935 100%	219 2%	142 1%	314 3%	759 8%	803 8%	951 10%	1,832 18%	144 1%	1,092 11%	192 2%	863 9%	479 5%	368 4%	732 7%	1,045 11%
Mahan - Female Prison	409 100%	15 4%	3 1%	12 3%	38 9%	23 6%	42 10%	86 21%	5 1%	53 13%	6 1%	43 11%	20 5%	4 1%	30 7%	29 7%
Total Prison Complex	10,344 100%	234 2%	145 1%	326 3%	797 8%	826 8%	993 10%	1,918 19%	149 1%	1,145 11%	198 2%	906 9%	499 5%	372 4%	762 7%	1,074 10%

ADTC

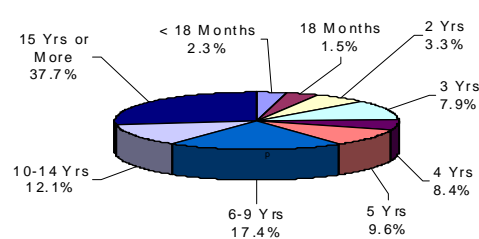


The median mandatory minimum term at ADTC is 8 years 4 months.

Eighty-three percent (83.9%) of the ADTC population have mandatory minimum sentences (412 of 491).

Forty-three percent (43.4%) have mandatory minimum terms of 10 years or longer.

MALE OFFENDERS IN OTHER FACILITIES

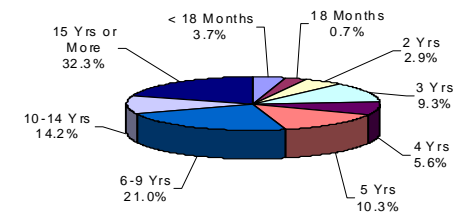


Of the 12,835 Male Offenders in Other Facilities, 74.1% (9,523) have mandatory minimum terms.

The median mandatory minimum term for Male Offenders in Other Facilities is 8.4 years (ADTC excluded).

Eighty-eight percent (88.5%) of New Jersey State Prison inmates have mandatory minimum terms and 83% percent of those have minimum terms of 15 years or more.

FEMALE OFFENDERS



The median mandatory minimum term at Edna Mahan is 7.6 years.

At Edna Mahan, 63.3% of the females housed have minimum terms (409 of 646).

Thirty-two percent (32.5%) of the females with mandatory minimum terms have terms of 5 years or less.

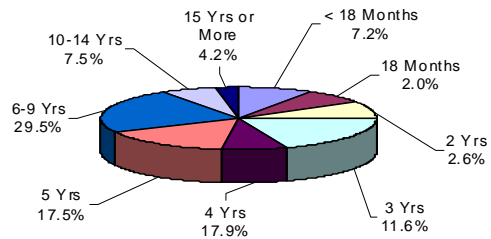
Youth Complex Offenders By Mandatory Minimum Term

Institution	Total	< 18 Months	18 Months	2 Years	3 Years	4 Years	5 Years	6-9 Years	10 Years	11-14 Years	15 Years	16-19 Years	20-24 Years	25-29 Years	30 Years	30+ Years
Garden State	1,149	60	17	24	110	201	205	358	18	95	11	28	20	1	0	1
	100%	5%	1%	2%	10%	17%	18%	31%	2%	8%	1%	2%	2%	0%	0%	0%
Mountainview	478	53	16	17	80	107	87	113	1	3	1	0	0	0	0	0
	100%	11%	3%	4%	17%	22%	18%	24%	0%	1%	0%	0%	0%	0%	0%	0%
Wagner Main	252	17	3	3	25	30	40	96	1	22	3	9	2	1	0	0
	100%	7%	1%	1%	10%	12%	16%	38%	0%	9%	1%	4%	1%	0%	0%	0%
Wagner Ad Seg	197	15	4	7	26	37	36	47	0	13	2	6	4	0	0	0
	100%	8%	2%	4%	13%	19%	18%	24%	0%	7%	1%	3%	2%	0%	0%	0%
Wagner Minimum Units	61	8	3	5	7	7	7	17	1	6	0	0	0	0	0	0
	100%	13%	5%	8%	11%	11%	11%	28%	2%	10%	0%	0%	0%	0%	0%	0%
Wagner Total	510	40	10	15	58	74	83	160	2	41	5	15	6	1	0	0
	100%	8%	2%	3%	11%	15%	16%	31%	0%	8%	1%	3%	1%	0%	0%	0%
Total Youth Complex	2,137	153	43	56	248	382	375	631	21	139	17	43	26	2	0	1
	100%	7%	2%	3%	12%	18%	18%	30%	1%	7%	1%	2%	1%	0%	0%	0%

Offenders In Halfway Houses, County Jails, Reentry, and St. Francis By Mandatory Minimum Term

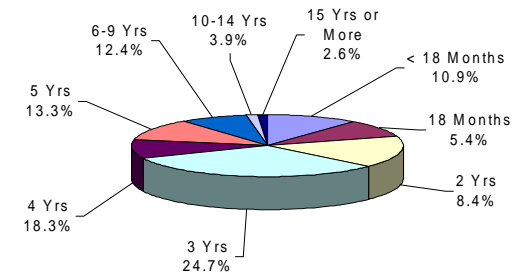
Institution	Total	< 18 Months	18 Months	2 Years	3 Years	4 Years	5 Years	6-9 Years	10 Years	11-14 Years	15 Years	16-19 Years	20-24 Years	25-29 Years	30 Years	30+ Years
Central Medical Unit	3 100%	0 0%	1 33%	0 0%	1 33%	0 0%	0 0%	0 0%	0 0%	0 0%	0 0%	0 0%	0 0%	0 0%	1 33%	0 0%
County Jail	10 100%	0 0%	2 20%	3 30%	1 10%	2 20%	1 10%	1 10%	0 0%	0 0%	0 0%	0 0%	0 0%	0 0%	0 0%	0 0%
Reentry	103 100%	2 2%	2 2%	2 2%	29 28%	22 21%	14 14%	23 22%	1 1%	6 6%	1 1%	1 1%	0 0%	0 0%	0 0%	0 0%
Halfway House	2,068 100%	237 11%	112 5%	179 9%	509 25%	376 18%	276 13%	246 12%	12 1%	67 3%	11 1%	30 1%	5 0%	0 0%	7 0%	1 0%
Total Halfway Houses, County Jails, Reentry, St. Francis	2,184 100%	239 11%	117 5%	184 8%	540 25%	400 18%	291 13%	270 12%	13 1%	73 3%	12 1%	31 1%	5 0%	0 0%	8 0%	1 0%

YOUTH COMPLEX



The median mandatory minimum term for youth complex offenders is 4.2 years. Among youth complex offenders, 77.8% have mandatory minimum terms (2,137 of 2,745). Of these, 58.8% have mandatory minimum terms of 5 years or less.

HALFWAY HOUSES COUNTY JAILS, REENTRY, ST. FRANCIS



The median mandatory minimum term for inmates in Halfway Houses, County Jails, Reentry, and St. Francis is 3.3 years. Seventy-five percent (75.2%) of the offenders in Halfway Houses, County Jails, Reentry, and St. Francis have mandatory minimum terms (2,184 of 2,902). Of these, 81% have mandatory minimum terms of 5 years or less.

AGE GROUP

**OFFENDERS IN NEW JERSEY CORRECTIONAL INSTITUTIONS
ON JANUARY 3, 2017, BY AGE**

The age of the offender is the chronological age as of January 3, 2017.

OFFENDERS IN CORRECTIONAL INSTITUTIONS BY AGE

Age	Total		Male Offenders in Other Facilities		Youth Complex		ADTC		Edna Mahan		Halfway Houses, County Jails, Reentry, St. Francis	
	#	%	#	%	#	%	#	%	#	%	#	%
TOTAL OFFENDERS	19,619	100%	12,835	100%	2,745	100%	491	100%	646	100%	2,902	100%
< 17 Years	0	0%	0	0%	0	0%	0	0%	0	0%	0	0%
17 Years	3	0%	0	0%	3	0%	0	0%	0	0%	0	0%
18-20 Years	292	1%	22	0%	221	8%	6	1%	3	0%	40	1%
21-22 Years	878	4%	111	1%	603	22%	11	2%	17	3%	136	5%
23-24 Years	1,361	7%	283	2%	807	29%	12	2%	44	7%	215	7%
25-27 Years	2,227	11%	895	7%	882	32%	27	5%	72	11%	351	12%
28-30 Years	2,118	11%	1,480	12%	206	8%	31	6%	77	12%	324	11%
31-33 Years	1,950	10%	1,528	12%	19	1%	31	6%	66	10%	306	11%
34-36 Years	1,789	9%	1,421	11%	1	0%	28	6%	57	9%	282	10%
37-39 Years	1,650	8%	1,294	10%	1	0%	31	6%	49	8%	275	9%
40-44 Years	2,144	11%	1,674	13%	0	0%	60	12%	67	10%	343	12%
45-49 Years	1,896	10%	1,485	12%	1	0%	69	14%	66	10%	275	9%
50-54 Years	1,458	7%	1,167	9%	0	0%	55	11%	64	10%	172	6%
55-59 Years	943	5%	753	6%	1	0%	52	11%	42	7%	95	3%
60-64 Years	453	2%	375	3%	0	0%	28	6%	11	2%	39	1%
65+ Years	415	2%	347	3%	0	0%	50	10%	11	2%	7	0%
Not Coded	42	0%	0	0%	0	0%	0	0%	0	0%	42	1%

- The median age for all inmates is 35 years.
- One percent (1%) of all offenders are 20 years of age or younger.
- Thirty-three percent (33%) of all offenders are between the ages of 21-30.
- Twenty-seven percent (27%) of all offenders are 31 to 39 years of age.
- Thirty-seven percent (37%) of all offenders are 40 years of age and older.

Prison Complex Offenders By Age

Institution	Total	< 17 Years	17 Years	18-20 Years	21-22 Years	23-24 Years	25-27 Years	28-30 Years	31-33 Years	34-36 Years	37-39 Years	40-44 Years	45-49 Years	50-54 Years	55-59 Years	60-64 Years	65+ Years	Not Coded
Bayside Main	1,143 100%	0 0%	0 0%	0 0%	1 0%	26 2%	129 11%	187 16%	166 15%	150 13%	108 9%	152 13%	94 8%	63 6%	43 4%	18 2%	6 1%	0 0%
Bayside Farm	512 100%	0 0%	0 0%	0 0%	1 0%	3 1%	20 4%	58 11%	50 10%	71 14%	64 13%	82 16%	69 13%	58 11%	25 5%	9 2%	2 0%	0 0%
Bayside Ancora	254 100%	0 0%	0 0%	0 0%	0 0%	5 2%	16 6%	28 11%	41 16%	29 11%	26 10%	33 13%	44 17%	15 6%	11 4%	4 2%	2 1%	0 0%
Bayside Total	1,909 100%	0 0%	0 0%	0 0%	2 0%	34 2%	165 9%	273 14%	257 13%	250 13%	198 10%	267 14%	207 11%	136 7%	79 4%	31 2%	10 1%	0 0%
CRAF Jones Farm	149 100%	0 0%	0 0%	0 0%	0 0%	0 0%	4 3%	21 14%	21 14%	19 13%	13 9%	23 15%	17 11%	15 10%	11 7%	4 3%	1 1%	0 0%
CRAF Reception	578 100%	0 0%	0 0%	9 2%	33 6%	50 9%	60 10%	78 13%	55 10%	54 9%	51 9%	66 11%	59 10%	36 6%	20 3%	4 1%	3 1%	0 0%
CRAF Total	727 100%	0 0%	0 0%	9 1%	33 5%	50 7%	64 9%	99 14%	76 10%	73 10%	64 9%	89 12%	76 10%	51 7%	31 4%	8 1%	4 1%	0 0%
East Jersey Main	1,173 100%	0 0%	0 0%	0 0%	1 0%	8 1%	39 3%	60 5%	107 9%	113 10%	117 10%	196 17%	181 15%	130 11%	112 10%	70 6%	39 3%	0 0%
East Jersey Camp	30 100%	0 0%	0 0%	0 0%	0 0%	0 0%	0 0%	4 13%	4 13%	2 7%	2 7%	6 20%	9 30%	1 3%	2 7%	0 0%	0 0%	0 0%
East Jersey Total	1,203 100%	0 0%	0 0%	0 0%	1 0%	8 1%	39 3%	64 5%	111 9%	115 10%	119 10%	202 17%	190 16%	131 11%	114 9%	70 6%	39 3%	0 0%

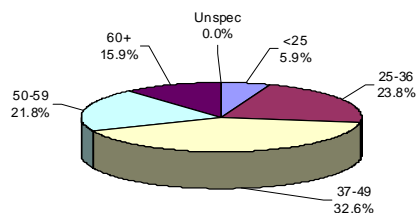
Prison Complex Offenders By Age

Institution	Total	< 17 Years	17 Years	18-20 Years	21-22 Years	23-24 Years	25-27 Years	28-30 Years	31-33 Years	34-36 Years	37-39 Years	40-44 Years	45-49 Years	50-54 Years	55-59 Years	60-64 Years	65+ Years	Not Coded
NJ State Prison	1,587 100%	0 0%	0 0%	4 0%	25 2%	34 2%	90 6%	122 8%	164 10%	142 9%	150 9%	230 14%	213 13%	167 11%	114 7%	56 4%	76 5%	0 0%
Northern Main	2,037 100%	0 0%	0 0%	0 0%	11 1%	30 1%	148 7%	244 12%	219 11%	234 11%	196 10%	260 13%	249 12%	213 10%	104 5%	75 4%	54 3%	0 0%
Northern Ad Seg Male	341 100%	0 0%	0 0%	5 1%	14 4%	26 8%	31 9%	34 10%	57 17%	38 11%	42 12%	46 13%	30 9%	9 3%	5 1%	4 1%	0 0%	0 0%
Northern Total	2,378 100%	0 0%	0 0%	5 0%	25 1%	56 2%	179 8%	278 12%	276 12%	272 11%	238 10%	306 13%	279 12%	222 9%	109 5%	79 3%	54 2%	0 0%
Southern	1,689 100%	0 0%	0 0%	2 0%	9 1%	21 1%	92 5%	258 15%	271 16%	207 12%	199 12%	230 14%	157 9%	133 8%	72 4%	18 1%	20 1%	0 0%
South Woods	3,342 100%	0 0%	0 0%	2 0%	16 0%	80 2%	266 8%	386 12%	373 11%	362 11%	326 10%	350 10%	363 11%	327 10%	234 7%	113 3%	144 4%	0 0%
Subtotal Male Offenders in Other Facilities	12,835 100%	0 0%	0 0%	22 0%	111 1%	283 2%	895 7%	1,480 12%	1,528 12%	1,421 11%	1,294 10%	1,674 13%	1,485 12%	1,167 9%	753 6%	375 3%	347 3%	0 0%

Prison Complex Offenders By Age

Institution	Total	< 17 Years	17 Years	18-20 Years	21-22 Years	23-24 Years	25-27 Years	28-30 Years	31-33 Years	34-36 Years	37-39 Years	40-44 Years	45-49 Years	50-54 Years	55-59 Years	60-64 Years	65+ Years	Not Coded
ADTC	491 100%	0 0%	0 0%	6 1%	11 2%	12 2%	27 5%	31 6%	31 6%	28 6%	31 6%	60 12%	69 14%	55 11%	52 11%	28 6%	50 10%	0 0%
Subtotal	13,326 100%	0 0%	0 0%	28 0%	122 1%	295 2%	922 7%	1,511 11%	1,559 12%	1,449 11%	1,325 10%	1,734 13%	1,554 12%	1,222 9%	805 6%	403 3%	397 3%	0 0%
Mahan - Female Prison	646 100%	0 0%	0 0%	3 0%	17 3%	44 7%	72 11%	77 12%	66 10%	57 9%	49 8%	67 10%	66 10%	64 10%	42 7%	11 2%	11 2%	0 0%
Total Prison Complex	13,972 100%	0 0%	0 0%	31 0%	139 1%	339 2%	994 7%	1,588 11%	1,625 12%	1,506 11%	1,374 10%	1,801 13%	1,620 12%	1,286 9%	847 6%	414 3%	408 3%	0 0%

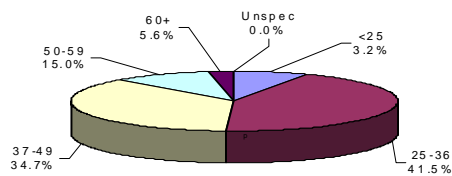
ADTC



The median age at ADTC is 45 years.

Thirty-seven percent (37.7%) of the ADTC offenders are 50 years of age or older. This may be compared with 20.6% of Male Offenders in Other Facilities and 19.8% of female (Edna Mahan) offenders.

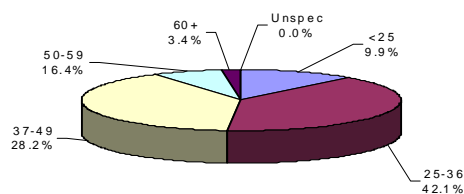
MALE OFFENDERS IN OTHER FACILITIES



The median age for Male Offenders in Other Facilities is 38 years.

Forty-one percent (41.5%) of Male Offenders in Other Facilities are age 25 to 36 (ADTC excluded).

FEMALE OFFENDERS



The median age for female inmates (Edna Mahan) is 36 years.

Forty-two percent (42.1%) of the women at Edna Mahan are age 25 to 36.

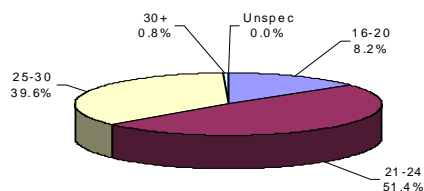
Youth Complex Offenders By Age

Institution	Total	< 17 Years	17 Years	18-20 Years	21-22 Years	23-24 Years	25-27 Years	28-30 Years	31-33 Years	34-36 Years	37-39 Years	40-44 Years	45-49 Years	50-54 Years	55-59 Years	60-64 Years	65+ Years	Not Coded
Garden State	1,417 100%	0 0%	3 0%	104 7%	326 23%	428 30%	461 33%	83 6%	9 1%	1 0%	0 0%	0 0%	1 0%	0 0%	1 0%	0 0%	0 0%	0 0%
Mountainview	675 100%	0 0%	0 0%	74 11%	156 23%	194 29%	210 31%	39 6%	2 0%	0 0%	0 0%	0 0%	0 0%	0 0%	0 0%	0 0%	0 0%	0 0%
Wagner Main	305 100%	0 0%	0 0%	18 6%	55 18%	106 35%	104 34%	22 7%	0 0%	0 0%	0 0%	0 0%	0 0%	0 0%	0 0%	0 0%	0 0%	0 0%
Wagner Ad Seg	260 100%	0 0%	0 0%	24 9%	52 20%	56 22%	71 27%	50 19%	6 2%	0 0%	1 0%	0 0%	0 0%	0 0%	0 0%	0 0%	0 0%	0 0%
Wagner Minimum Units	88 100%	0 0%	0 0%	1 1%	14 16%	23 26%	36 41%	12 14%	2 2%	0 0%	0 0%	0 0%	0 0%	0 0%	0 0%	0 0%	0 0%	0 0%
Wagner Total	653 100%	0 0%	0 0%	43 7%	121 19%	185 28%	211 32%	84 13%	8 1%	0 0%	1 0%	0 0%	0 0%	0 0%	0 0%	0 0%	0 0%	0 0%
Total Youth Complex	2,745 100%	0 0%	3 0%	221 8%	603 22%	807 29%	882 32%	206 8%	19 1%	1 0%	1 0%	0 0%	1 0%	0 0%	1 0%	0 0%	0 0%	0 0%

Offenders In Halfway Houses, County Jails, Reentry, and St. Francis By Age

Institution	Total	< 17 Years	17 Years	18-20 Years	21-22 Years	23-24 Years	25-27 Years	28-30 Years	31-33 Years	34-36 Years	37-39 Years	40-44 Years	45-49 Years	50-54 Years	55-59 Years	60-64 Years	65+ Years	Not Coded
Central Medical Unit	3	0	0	0	1	0	0	0	0	0	1	0	0	0	0	0	1	0
	100%	0%	0%	0%	33%	0%	0%	0%	0%	0%	33%	0%	0%	0%	0%	0%	33%	0%
County Jail	70	0	0	0	1	0	9	4	1	2	4	2	2	2	1	0	0	42
	100%	0%	0%	0%	1%	0%	13%	6%	1%	3%	6%	3%	3%	3%	1%	0%	0%	60%
Reentry	147	0	0	0	12	20	25	23	13	15	17	4	11	6	0	1	0	0
	100%	0%	0%	0%	8%	14%	17%	16%	9%	10%	12%	3%	7%	4%	0%	1%	0%	0%
Halfway House	2,682	0	0	40	122	195	317	297	292	265	253	337	262	164	94	38	6	0
	100%	0%	0%	1%	5%	7%	12%	11%	11%	10%	9%	13%	10%	6%	4%	1%	0%	0%
Total Halfway Houses, County Jails, Reentry, St. Francis	2,902	0	0	40	136	215	351	324	306	282	275	343	275	172	95	39	7	42
	100%	0%	0%	1%	5%	7%	12%	11%	11%	10%	9%	12%	9%	6%	3%	1%	0%	1%

YOUTH COMPLEX

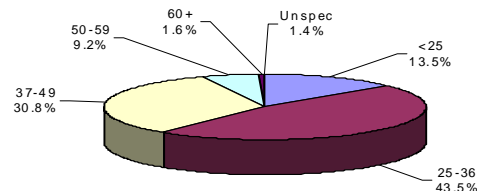


The median age for the youth complex is 24 years.

Ninety-one percent (91%) of all youth complex inmates are between the ages of 21 and 30.

Fifty-nine percent (59.6%) are less than 25 years of age.

HALFWAY HOUSES, COUNTY JAILS, REENTRY, ST. FRANCIS



The median age for offenders in Halfway Houses, County Jails, Reentry, and St. Francis is 34 years.

The median age for offenders housed in county jails is 30 years; while offenders in halfway houses have a median age of 34 years.

RACE/ETHNIC IDENTIFICATION

**OFFENDERS IN NEW JERSEY CORRECTIONAL INSTITUTIONS
ON JANUARY 3, 2017, BY RACE/ETHNIC IDENTIFICATION**

In these tabulations, a Hispanic is a person of Mexican, Puerto Rican, Cuban, South American or other Spanish culture or origin (Spain or Portugal) regardless of complexion.

OFFENDERS IN CORRECTIONAL INSTITUTIONS BY RACE/ETHNIC IDENTIFICATION

Ethnic Identification	Total		Male Offenders in Other Facilities		Youth Complex		ADTC		Edna Mahan		Halfway Houses, County Jails, Reentry, St. Francis	
	#	%	#	%	#	%	#	%	#	%	#	%
TOTAL OFFENDERS	19,619	100%	12,835	100%	2,745	100%	491	100%	646	100%	2,902	100%
Black	11,988	61%	7,711	60%	1,859	68%	111	23%	294	46%	2,013	69%
White	4,304	22%	2,819	22%	481	18%	238	48%	268	41%	498	17%
Hispanic	3,155	16%	2,227	17%	386	14%	130	26%	74	11%	338	12%
Asian	120	1%	70	1%	19	1%	12	2%	9	1%	10	0%
American Indian	10	0%	8	0%	0	0%	0	0%	1	0%	1	0%
Other or Not Coded	42	0%	0	0%	0	0%	0	0%	0	0%	42	1%

- Sixty-one (61%) percent of all state correctional institution offenders were Black, 22% were White, 16% were Hispanic, and 1% were Asian.

Prison Complex Offenders By Race/Ethnic Identification

Institution	Total	Black	White	Hispanic	Asian	American Indian	Other or Not Coded
Bayside Main	1,143 100%	735 64%	210 18%	193 17%	4 0%	1 0%	0 0%
Bayside Farm	512 100%	323 63%	118 23%	69 13%	2 0%	0 0%	0 0%
Bayside Ancora	254 100%	159 63%	55 22%	40 16%	0 0%	0 0%	0 0%
Bayside Total	1,909 100%	1,217 64%	383 20%	302 16%	6 0%	1 0%	0 0%
CRAF Jones Farm	149 100%	65 44%	71 48%	12 8%	1 1%	0 0%	0 0%
CRAF Reception	578 100%	331 57%	170 29%	76 13%	1 0%	0 0%	0 0%
CRAF Total	727 100%	396 54%	241 33%	88 12%	2 0%	0 0%	0 0%
East Jersey Main	1,173 100%	736 63%	201 17%	229 20%	7 1%	0 0%	0 0%
East Jersey Camp	30 100%	19 63%	5 17%	6 20%	0 0%	0 0%	0 0%
East Jersey Total	1,203 100%	755 63%	206 17%	235 20%	7 1%	0 0%	0 0%

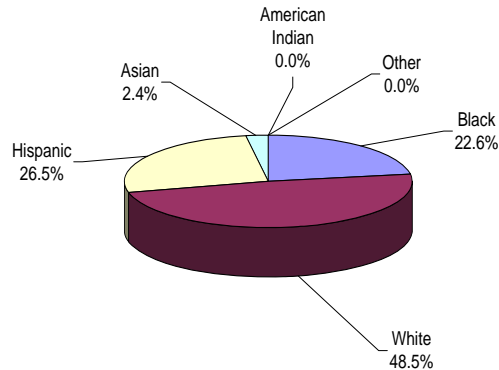
Prison Complex Offenders By Race/Ethnic Identification

Institution	Total	Black	White	Hispanic	Asian	American Indian	Other or Not Coded
NJ State Prison	1,587	1,001	323	240	22	1	0
	100%	63%	20%	15%	1%	0%	0%
Northern Main	2,037	1,326	338	364	8	1	0
	100%	65%	17%	18%	0%	0%	0%
Northern Ad Seg Male	341	197	88	55	0	1	0
	100%	58%	26%	16%	0%	0%	0%
Northern Total	2,378	1,523	426	419	8	2	0
	100%	64%	18%	18%	0%	0%	0%
Southern	1,689	923	446	310	9	1	0
	100%	55%	26%	18%	1%	0%	0%
South Woods	3,342	1,896	794	633	16	3	0
	100%	57%	24%	19%	0%	0%	0%
Subtotal Male Offenders in Other Facilities	12,835	7,711	2,819	2,227	70	8	0
	100%	60%	22%	17%	1%	0%	0%

Prison Complex Offenders By Race/Ethnic Identification

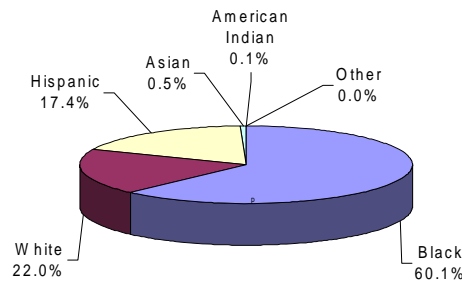
Institution	Total	Black	White	Hispanic	Asian	American Indian	Other or Not Coded
ADTC	491	111	238	130	12	0	0
	100%	23%	48%	26%	2%	0%	0%
Subtotal	13,326	7,822	3,057	2,357	82	8	0
	100%	59%	23%	18%	1%	0%	0%
Mahan - Female Prison	646	294	268	74	9	1	0
	100%	46%	41%	11%	1%	0%	0%
Total Prison Complex	13,972	8,116	3,325	2,431	91	9	0
	100%	58%	24%	17%	1%	0%	0%

ADTC



White offenders comprised 48.5% of the offenders at ADTC.

MALE OFFENDERS IN OTHER FACILITIES

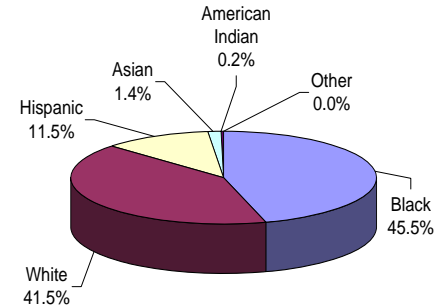


The largest proportion of Black male offenders in a major facility was at Bayside and Northern (64%).

The largest proportion of White male offenders at a major facility was at CRAF (33%), ADTC excluded.

The largest proportion of Hispanic male offenders at a major facility was at East Jersey (20%), (ADTC excluded).

FEMALE OFFENDERS



Black offenders comprised 45.5% of the population at Edna Mahan. This may be compared with Black offenders comprising 60.1% of the Male Offenders in Other Facilities.

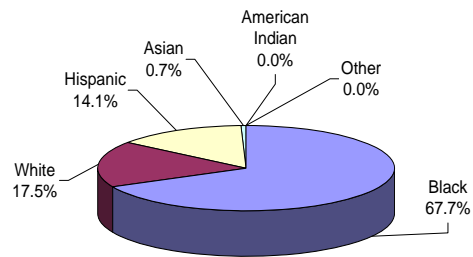
Youth Complex Offenders By Race/Ethnic Identification

Institution	Total	Black	White	Hispanic	Asian	American Indian	Other or Not Coded
Garden State	1,417 100%	1,018 72%	200 14%	193 14%	6 0%	0 0%	0 0%
Mountainview	675 100%	409 61%	164 24%	90 13%	12 2%	0 0%	0 0%
Wagner Main	305 100%	214 70%	41 13%	49 16%	1 0%	0 0%	0 0%
Wagner Ad Seg	260 100%	170 65%	53 20%	37 14%	0 0%	0 0%	0 0%
Wagner Minimum Units	88 100%	48 55%	23 26%	17 19%	0 0%	0 0%	0 0%
Wagner Total	653 100%	432 66%	117 18%	103 16%	1 0%	0 0%	0 0%
Total Youth Complex	2,745 100%	1,859 68%	481 18%	386 14%	19 1%	0 0%	0 0%

Offenders In Halfway Houses, County Jails, Reentry, and St. Francis By Race/Ethnic Identification

Institution	Total	Black	White	Hispanic	Asian	American Indian	Other or Not Coded
Central Medical Unit	3 100%	3 100%	0 0%	0 0%	0 0%	0 0%	0 0%
County Jail	70 100%	13 19%	11 16%	4 6%	0 0%	0 0%	42 60%
Reentry	147 100%	126 86%	8 5%	13 9%	0 0%	0 0%	0 0%
Halfway House	2,682 100%	1,871 70%	479 18%	321 12%	10 0%	1 0%	0 0%
Total Halfway Houses, County Jails, Reentry, St. Francis	2,902 100%	2,013 69%	498 17%	338 12%	10 0%	1 0%	42 1%

YOUTH COMPLEX

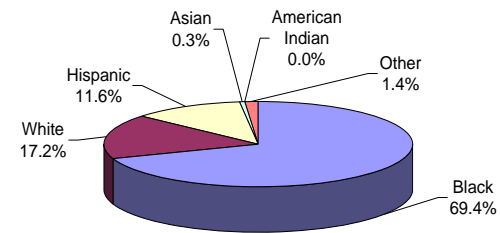


The largest proportion of Black offenders in the youth complex facilities was housed at Garden State (72%).

The largest proportion of White offenders in the youth complex facilities was housed at Mountainview (24%).

The largest proportion of Hispanic offenders in the youth complex facilities was housed at Wagner (16%).

HALFWAY HOUSES, COUNTY JAILS, REENTRY, ST. FRANCIS



Race and ethnicity for inmates assigned to Halfway Houses, County Jails, Reentry, and St. Francis was roughly equivalent to that for the total adult inmate population.

COUNTY OF COMMITMENT

**OFFENDERS IN NEW JERSEY CORRECTIONAL INSTITUTIONS
ON JANUARY 3, 2017, BY COUNTY OF COMMITMENT**

OFFENDERS IN NEW JERSEY CORRECTIONAL INSTITUTIONS BY COUNTY OF COMMITMENT

County of Commitment	Total		Male Offenders in Other Facilities		Youth Complex		ADTC		Edna Mahan		Halfway Houses, County Jails, Reentry, St. Francis	
	#	%	#	%	#	%	#	%	#	%	#	%
TOTAL OFFENDERS	19,619	100%	12,835	100%	2,745	100%	491	100%	646	100%	2,902	100%
Atlantic	1,226	6%	779	6%	176	6%	20	4%	50	8%	201	7%
Bergen	807	4%	556	4%	88	3%	40	8%	28	4%	95	3%
Burlington	719	4%	475	4%	91	3%	22	4%	30	5%	101	3%
Camden	2,409	12%	1,568	12%	340	12%	46	9%	76	12%	379	13%
Cape May	477	2%	306	2%	66	2%	13	3%	27	4%	65	2%
Cumberland	561	3%	376	3%	83	3%	19	4%	10	2%	73	3%
Essex	2,869	15%	1,923	15%	400	15%	35	7%	61	9%	450	16%
Gloucester	414	2%	273	2%	52	2%	13	3%	18	3%	58	2%
Hudson	1,410	7%	948	7%	214	8%	26	5%	38	6%	184	6%
Hunterdon	79	0%	42	0%	8	0%	5	1%	7	1%	17	1%
Mercer	1,160	6%	723	6%	203	7%	19	4%	42	7%	173	6%
Middlesex	1,396	7%	914	7%	176	6%	40	8%	61	9%	205	7%
Monmouth	1,017	5%	670	5%	143	5%	25	5%	43	7%	136	5%
Morris	293	1%	202	2%	35	1%	17	3%	11	2%	28	1%
Ocean	763	4%	518	4%	89	3%	33	7%	28	4%	95	3%
Passaic	1,440	7%	905	7%	223	8%	47	10%	38	6%	227	8%
Salem	234	1%	150	1%	37	1%	7	1%	6	1%	34	1%
Somerset	317	2%	212	2%	36	1%	5	1%	12	2%	52	2%
Sussex	143	1%	85	1%	21	1%	9	2%	12	2%	16	1%
Union	1,583	8%	1,023	8%	240	9%	29	6%	37	6%	254	9%
Warren	134	1%	74	1%	23	1%	19	4%	8	1%	10	0%
Not Coded	168	1%	113	1%	1	0%	2	0%	3	0%	49	2%

- Essex County has the highest percentage of commitments among Male Offenders in Other Facilities (15%), and the youth complex (15%).
- Camden County has the highest percentage of commitments at Edna Mahan (12%).
- Passaic has the highest percentage of commitments at ADTC (10%).
- Essex County has the highest percentage of commitments (16%) at Halfway Houses, County Jails, Reentry, and Saint Francis Hospital.
- Two counties, Essex and Camden, combine to comprise over one fourth (27%) of total NJDOC commitments.

Prison Complex Offenders By County Of Commitment

Institution	Total	Atl	Ber	Burl	Cam	Cape May	Cum	Ess	Glou	Hud	Hunt	Mer	Mid	Mon	Mor	Oc	Pas	Sal	Som	Sus	Un	War	Not Coded
Bayside Main	1,143 100%	71 6%	32 3%	39 3%	185 16%	35 3%	38 3%	149 13%	30 3%	85 7%	2 0%	70 6%	75 7%	56 5%	11 1%	42 4%	91 8%	12 1%	13 1%	9 1%	92 8%	6 1%	0 0%
Bayside Farm	512 100%	27 5%	16 3%	19 4%	89 17%	18 4%	12 2%	78 15%	18 4%	29 6%	1 0%	28 5%	40 8%	31 6%	5 1%	19 4%	29 6%	6 1%	12 2%	5 1%	29 6%	1 0%	0 0%
Bayside Ancora	254 100%	15 6%	7 3%	10 4%	42 17%	6 2%	7 3%	29 11%	2 1%	21 8%	1 0%	19 7%	23 9%	12 5%	3 1%	11 4%	18 7%	2 1%	7 3%	0 0%	17 7%	2 1%	0 0%
Bayside Total	1,909 100%	113 6%	55 3%	68 4%	316 17%	59 3%	57 3%	256 13%	50 3%	135 7%	4 0%	117 6%	138 7%	99 5%	19 1%	72 4%	138 7%	20 1%	32 2%	14 1%	138 7%	9 0%	0 0%
CRAF Jones Farm	149 100%	3 2%	17 11%	8 5%	21 14%	8 5%	4 3%	6 4%	4 3%	4 3%	1 1%	13 9%	18 12%	7 5%	2 1%	6 4%	10 7%	3 2%	1 1%	0 0%	13 9%	0 0%	0 0%
CRAF Reception	578 100%	28 5%	17 3%	24 4%	64 11%	19 3%	24 4%	66 11%	16 3%	44 8%	2 0%	34 6%	41 7%	39 7%	10 2%	23 4%	61 11%	8 1%	11 2%	3 1%	37 6%	3 1%	4 1%
CRAF Total	727 100%	31 4%	34 5%	32 4%	85 12%	27 4%	28 4%	72 10%	20 3%	48 7%	3 0%	47 6%	59 8%	46 6%	12 2%	29 4%	71 10%	11 2%	12 2%	3 0%	50 7%	3 0%	4 1%
East Jersey Main	1,173 100%	56 5%	48 4%	30 3%	98 8%	7 1%	29 2%	236 20%	14 1%	103 9%	1 0%	60 5%	94 8%	72 6%	22 2%	34 3%	89 8%	6 1%	25 2%	8 1%	123 10%	6 1%	12 1%
East Jersey Camp	30 100%	2 7%	1 3%	0 0%	2 7%	0 0%	1 3%	8 27%	0 0%	1 3%	0 0%	1 3%	5 17%	0 0%	0 0%	3 10%	2 7%	0 0%	1 3%	0 0%	3 10%	0 0%	0 0%
East Jersey Total	1,203 100%	58 5%	49 4%	30 2%	100 8%	7 1%	30 2%	244 20%	14 1%	104 9%	1 0%	61 5%	99 8%	72 6%	22 2%	37 3%	91 8%	6 0%	26 2%	8 1%	126 10%	6 0%	12 1%

Prison Complex Offenders By County Of Commitment

Institution	Total	Atl	Ber	Burl	Cam	Cape May	Cum	Ess	Glou	Hud	Hunt	Mer	Mid	Mon	Mor	Oc	Pas	Sal	Som	Sus	Un	War	Not Coded
NJ State Prison	1,587 100%	103 6%	84 5%	68 4%	141 9%	26 2%	57 4%	263 17%	18 1%	110 7%	7 0%	96 6%	93 6%	77 5%	26 2%	61 4%	90 6%	9 1%	22 1%	10 1%	142 9%	6 0%	78 5%
Northern Main	2,037 100%	73 4%	112 5%	42 2%	107 5%	22 1%	29 1%	505 25%	12 1%	215 11%	5 0%	92 5%	157 8%	86 4%	46 2%	64 3%	181 9%	5 0%	42 2%	12 1%	219 11%	6 0%	5 0%
Northern Ad Seg Male	341 100%	24 7%	14 4%	14 4%	56 16%	8 2%	11 3%	46 13%	9 3%	26 8%	1 0%	19 6%	24 7%	21 6%	3 1%	13 4%	22 6%	4 1%	2 1%	3 1%	18 5%	1 0%	2 1%
Northern Total	2,378 100%	97 4%	126 5%	56 2%	163 7%	30 1%	40 2%	551 23%	21 1%	241 10%	6 0%	111 5%	181 8%	107 4%	49 2%	77 3%	203 9%	9 0%	44 2%	15 1%	237 10%	7 0%	7 0%
Southern	1,689 100%	120 7%	67 4%	73 4%	253 15%	72 4%	54 3%	184 11%	47 3%	115 7%	10 1%	91 5%	109 6%	96 6%	27 2%	89 5%	116 7%	27 2%	23 1%	8 0%	97 6%	11 1%	0 0%
South Woods	3,342 100%	257 8%	141 4%	148 4%	510 15%	85 3%	110 3%	353 11%	103 3%	195 6%	11 0%	200 6%	235 7%	173 5%	47 1%	153 5%	196 6%	68 2%	53 2%	27 1%	233 7%	32 1%	12 0%
Subtotal Male Offenders in Other Facilities	12,835 100%	779 6%	556 4%	475 4%	1,568 12%	306 2%	376 3%	1,923 15%	273 2%	948 7%	42 0%	723 6%	914 7%	670 5%	202 2%	518 4%	905 7%	150 1%	212 2%	85 1%	1,023 8%	74 1%	113 1%

Prison Complex Offenders By County Of Commitment

Institution	Total	Atl	Ber	Burl	Cam	Cape May	Cum	Ess	Glou	Hud	Hunt	Mer	Mid	Mon	Mor	Oc	Pas	Sal	Som	Sus	Un	War	Not Coded
ADTC	491 100%	20 4%	40 8%	22 4%	46 9%	13 3%	19 4%	35 7%	13 3%	26 5%	5 1%	19 4%	40 8%	25 5%	17 3%	33 7%	47 10%	7 1%	5 1%	9 2%	29 6%	19 4%	2 0%
Subtotal	13,326 100%	799 6%	596 4%	497 4%	1,614 12%	319 2%	395 3%	1,958 15%	286 2%	974 7%	47 0%	742 6%	954 7%	695 5%	219 2%	551 4%	952 7%	157 1%	217 2%	94 1%	1,052 8%	93 1%	115 1%
Mahan - Female Prison	646 100%	50 8%	28 4%	30 5%	76 12%	27 4%	10 2%	61 9%	18 3%	38 6%	7 1%	42 7%	61 9%	43 7%	11 2%	28 4%	38 6%	6 1%	12 2%	12 2%	37 6%	8 1%	3 0%
Total Prison Complex	13,972 100%	849 6%	624 4%	527 4%	1,690 12%	346 2%	405 3%	2,019 14%	304 2%	1,012 7%	54 0%	784 6%	1015 7%	738 5%	230 2%	579 4%	990 7%	163 1%	229 2%	106 1%	1,089 8%	101 1%	118 1%

Youth Complex Offenders By County Of Commitment

Institution	Total	Atl	Ber	Burl	Cam	Cape May	Cum	Ess	Glou	Hud	Hunt	Mer	Mid	Mon	Mor	Oc	Pas	Sal	Som	Sus	Un	War	Not Coded
Garden State	1,417 100%	102 7%	36 3%	52 4%	213 15%	29 2%	59 4%	195 14%	29 2%	106 7%	3 0%	132 9%	79 6%	65 5%	17 1%	49 3%	90 6%	22 2%	12 1%	10 1%	105 7%	11 1%	1 0%
Mountainview	675 100%	32 5%	36 5%	15 2%	48 7%	14 2%	4 1%	111 16%	10 1%	59 9%	4 1%	29 4%	61 9%	42 6%	7 1%	24 4%	79 12%	6 1%	15 2%	6 1%	67 10%	6 1%	0 0%
Wagner Main	305 100%	17 6%	9 3%	8 3%	32 10%	5 2%	13 4%	49 16%	7 2%	29 10%	0 0%	21 7%	16 5%	15 5%	6 2%	5 2%	18 6%	5 2%	3 1%	3 1%	39 13%	5 2%	0 0%
Wagner Ad Seg	260 100%	23 9%	5 2%	14 5%	38 15%	11 4%	6 2%	33 13%	4 2%	17 7%	0 0%	16 6%	14 5%	13 5%	5 2%	7 3%	27 10%	3 1%	4 2%	2 1%	17 7%	1 0%	0 0%
Wagner Minimum Units	88 100%	2 2%	2 2%	2 2%	9 10%	7 8%	1 1%	12 14%	2 2%	3 3%	1 1%	5 6%	6 7%	8 9%	0 0%	4 5%	9 10%	1 1%	2 2%	0 0%	12 14%	0 0%	0 0%
Wagner Total	653 100%	42 6%	16 2%	24 4%	79 12%	23 4%	20 3%	94 14%	13 2%	49 8%	1 0%	42 6%	36 6%	36 6%	11 2%	16 2%	54 8%	9 1%	9 1%	5 1%	68 10%	6 1%	0 0%
Total Youth Complex	2,745 100%	176 6%	48 2%	30 1%	98 4%	7 0%	29 1%	236 9%	14 1%	103 4%	1 0%	60 2%	94 3%	72 3%	22 1%	34 1%	89 3%	6 0%	25 1%	8 0%	123 4%	6 0%	12 0%

Offenders In Halfway Houses, County Jails, Reentry, and St. Francis By County Of Commitment

Institution	Total	Atl	Ber	Burl	Cam	Cape May	Cum	Ess	Glou	Hud	Hunt	Mer	Mid	Mon	Mor	Oc	Pas	Sal	Som	Sus	Un	War	Not Coded
Central Medical Unit	3 100%	0 0%	0 0%	1 33%	0 0%	0 0%	1 33%	0 0%	0 0%	0 0%	0 0%	0 0%	0 0%	0 0%	0 0%	1 33%	0 0%	0 0%	0 0%	0 0%	0 0%	0 0%	0 0%
County Jail	70 100%	1 1%	1 1%	2 3%	0 0%	1 1%	0 0%	3 4%	1 1%	1 1%	0 0%	3 4%	3 4%	0 0%	0 0%	1 1%	0 0%	2 3%	1 1%	0 0%	2 3%	1 1%	47 67%
Reentry	147 100%	0 0%	6 4%	0 0%	2 1%	0 0%	0 0%	90 61%	0 0%	8 5%	0 0%	2 1%	5 3%	2 1%	0 0%	2 1%	10 7%	0 0%	2 1%	3 2%	14 10%	1 1%	0 0%
Halfway House	2,682 100%	200 7%	88 3%	98 4%	377 14%	64 2%	72 3%	357 13%	57 2%	175 7%	17 1%	168 6%	197 7%	134 5%	28 1%	91 3%	217 8%	32 1%	49 2%	13 0%	238 9%	8 0%	2 0%
Total Halfway Houses, County Jails, Reentry, St. Francis	2,902 100%	201 7%	95 3%	101 3%	379 13%	65 2%	73 3%	450 16%	58 2%	184 6%	17 1%	173 6%	205 7%	136 5%	28 1%	95 3%	227 8%	34 1%	52 2%	16 1%	254 9%	10 0%	49 2%