

The New Jersey
**CONSTRUCTION
REPORTER**

JULY 2013 DATA

CHRIS CHRISTIE, Governor
STATE OF NEW JERSEY

RICHARD E. CONSTABLE III, Commissioner
DEPARTMENT OF COMMUNITY AFFAIRS

EDWARD M. SMITH, Director
DIVISION OF CODES AND STANDARDS

DISTRIBUTED BY THE

New Jersey Department of
COMMUNITY AFFAIRS
DIVISION OF CODES AND STANDARDS
101 South Broad Street,
PO Box 802
Trenton, NJ 08625-0802
www.nj.gov/dca/divisions/codes/reporter/



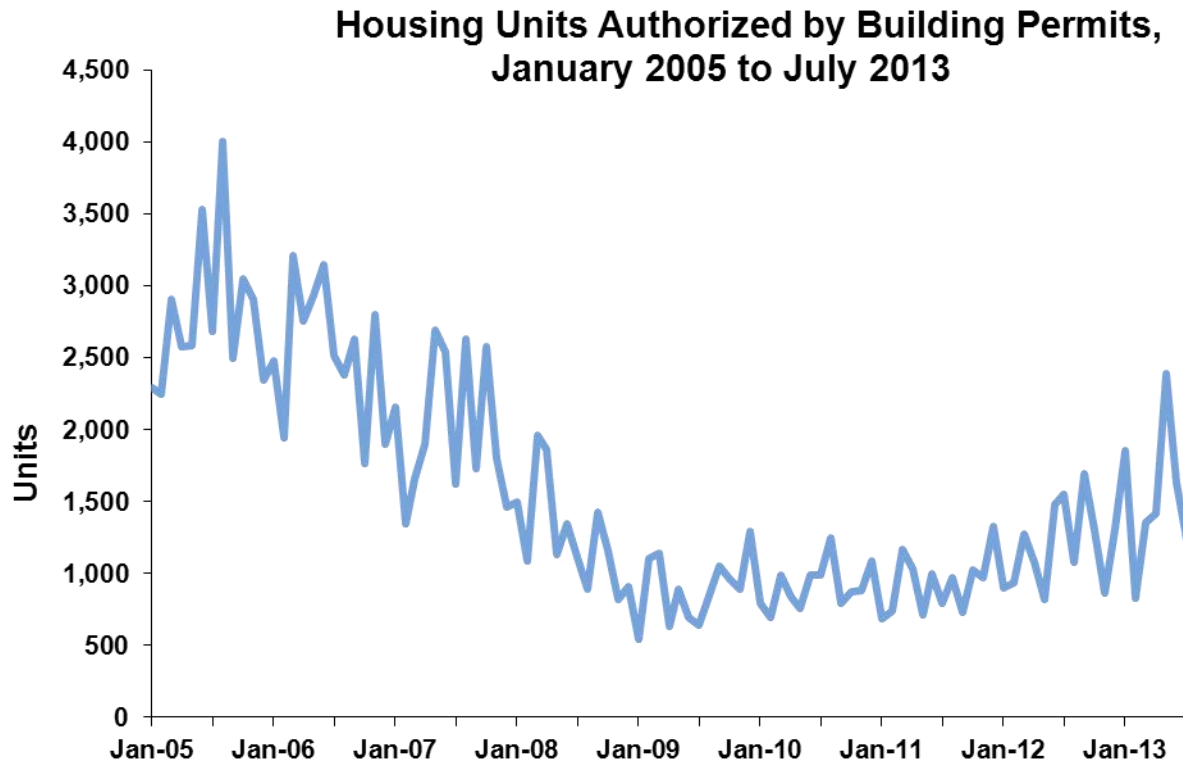
THE NEW JERSEY CONSTRUCTION REPORTER

TABLE OF CONTENTS

Contents	Description	Pages
INTRODUCTION		
Highlights	Analysis of data in this month's report	i-iv
Foreword	Background information	1
Exhibits A - C	Definition of terms used throughout the tables	2 - 4
RESIDENTIAL CONSTRUCTION		
Tables 1 - 6	Housing units authorized and certified, housing units demolished, monthly and year-to-date figures	5 - 14
OFFICE SPACE		
Tables 7 - 8	Square feet of office space authorized and certified, monthly and year-to-date figures	15 - 19
RETAIL SPACE		
Tables 9 - 10	Square feet of retail space authorized and certified, monthly and year-to-date figures	20 - 24
DOLLAR AMOUNTS		
Tables 11 - 13	Dollar amount of construction authorized by county and top municipalities, monthly and year to date; dollar amount of construction authorized by use group and permit type, New Jersey totals, monthly and year to date	25 - 30
MUNICIPAL SUMMARY DATA		
	Housing units authorized and certified, office and retail space authorized, and dollar amount of construction authorized by municipality, monthly totals	MSD-1 - MSD-12
ILLUSTRATIONS		
Map 1	Housing units authorized by municipality, year to date	9
Map 2	Office space authorized by municipality, year to date	18
Map 3	Retail space authorized by municipality, year to date	23
Map 4	Estimated cost of construction authorized by municipality, year to date	28

JULY 2013 HIGHLIGHTS

- The dollar amount of construction in July was \$990.4 million based on monthly building permits from 526 of New Jersey’s 565 municipalities.
- Residential work totaled \$536.6 million, 54.2 percent of all authorized activity. New homes accounted for \$242.4 million. Home improvements added another \$294.2 million.
- Office, retail, and other nonresidential activity totaled \$453.8 million (45.8 percent in July). New buildings made up \$82.6 million. The balance was tenant fit ups and other alterations and additions to existing, nonresidential buildings.
- Local construction offices issued building permits for 1,239 new houses in July. This was 24 percent less than last month.
- Clark Township in Union County had 76 authorized dwellings, more than any other locality. All of these units were part of a new, active adult apartment complex that broke ground in July.



- Hanover Township in Morris County had 65 authorized dwellings. All but five were from a new, rental development.

- Newark in Essex County and New Brunswick and Monroe Township, both in Middlesex County, had 62, 59, and 48 authorized dwellings, respectively.
- Secaucus (Hudson County) led all municipalities with \$31.4 million of construction in July. An office development by Hartz Mountain Industries Inc. accounted for most of the authorized work.
- Newark had \$26.3 million of construction. The biggest project was a new, mixed-use building with an estimated construction cost of \$12.5 million with a parking deck, shops, and 62 apartments.
- Englewood (Bergen County) had \$18.6 million of work, nearly all of which was for a cancer center addition to a hospital in the City.
- State buildings accounted for \$29.1 million of construction in July; nearly half of this was for a new food, nutrition, and health center at Rutgers University's main campus.

Year to Date

- The dollar amount of work and the number of new dwellings increased by double digits compared to last year at this time.
- Between January and July 2013, the dollar amount of work authorized by permits was \$7.467 billion. This was 14 percent more than last year.
- The number of new houses authorized was 11,076. This was 2,787 more than last year at this time, an increase of 33.6 percent.
- Office construction is down by 25.6 percent. Retail development remains sluggish.
- Jersey City and Newark had the most work through July. More than half (55.3 percent) of the \$381.4 million of work authorized in Jersey City was for new houses or home repair. Jersey City had 1,084 authorized dwellings between January and July 2013, more than any other municipality.
- Over 88 percent of the \$255.3 million of construction in Newark was for office, retail, and other nonresidential work. New office buildings for Panasonic electronics and Prudential insurance accounted for much of this.
- The dollar amount of work authorized for State buildings through July was \$261.7 million. In addition to the food and nutrition center at Rutgers, Ramapo College of New Jersey has about \$40 million of improvements underway. A new retail, entertainment, and amusement complex at the Meadowlands accounts for another \$34.9 million, and a new horse racing track, also at the Meadowlands, accounts for another \$21.1 million.

Major Construction Indicators, New Jersey: Year-to-Date Trends				
Period	Estimated Cost of Construction	Authorized Housing Units	Authorized Office Space (square feet)	Authorized Retail Space (square feet)
January – July 2013	\$7,466,166,257	11,076	3,106,128	999,351
January – July 2012	6,549,856,703	8,289	4,177,557	1,016,243
January – July 2011	6,340,983,229	6,583	2,903,403	928,638
January – July 2010	5,553,433,198	6,537	2,916,907	1,031,682
January – July 2009	5,600,131,097	5,768	2,253,921	1,224,900
January – July 2008	8,484,741,794	10,617	4,895,294	4,302,348
January – July 2007	8,659,333,482	14,711	5,394,208	2,466,516
January – July 2006	8,966,946,188	19,671	6,736,281	2,688,593
January – July 2005	8,370,138,760	21,521	6,654,423	4,082,247
January – July 2004	7,694,036,676	21,500	6,521,075	2,926,533
January – July 2003	6,363,928,918	18,365	5,225,932	3,487,499
January – July 2002	6,977,038,190	18,459	6,723,355	5,201,147
<i>Difference Between 2012 and 2013</i>				
2012 - 2013	\$916,309,554	2,787	-1,071,429	-16,892
Percent Change	14.0%	33.6%	-25.6%	-1.7%
<i>Difference Between 2011 and 2012</i>				
2011 - 2012	\$208,873,474	1,706	1,274,154	87,605
Percent Change	3.3%	25.9%	43.9%	9.4%
<i>Difference Between 2010 and 2011</i>				
2010 - 2011	\$787,550,031	46	-13,504	-103,044
Percent Change	14.2%	0.7%	-0.5%	-10.0%
Source: N.J. Department of Community Affairs, 9/9/13				

THE NEW JERSEY CONSTRUCTION REPORTER contains statistics on construction activity in New Jersey. Information in the report comes from construction officials who administer the State Uniform Construction Code (UCC) (N.J.A.C. 5:23-1 et seq.) in New Jersey's 566 municipalities.

Each month, construction officials send to the New Jersey Department of Community Affairs (DCA) reports on the permits and certificates they issue. Permits authorize the start of construction and cover four types of activity: (1) New construction permits authorize the start of a new structure. (2) Permits for additions refer to work that will add space (volume and square feet) to an existing building. (3) Alterations also involve existing structures, but the work authorized will not add space. Typically, construction officials issue permits for alterations when the work is subject to one or more of the UCC's major subcodes (building, electrical, plumbing, fire protection). (4) Demolition permits authorize the removal of a building or some other structure. The *CONSTRUCTION REPORTER* identifies only those demolitions that will result in the loss of housing.

In addition to permits, the *CONSTRUCTION REPORTER* has information on the certificates issued by construction officials. While permits authorize the start of construction, certificates are issued for work completed and ready for occupancy. Each month, the *CONSTRUCTION REPORTER* will report on the number of housing units and the amount of office and retail space authorized for construction, along with the number of housing units and the amount of office and retail space completed.

Data Comparability

The *CONSTRUCTION REPORTER* contains information on authorized housing units that is tabulated two different ways. The DCA tabulates Tables 1 through 3 and Tables 8 through 13 based on the use of buildings, defined in "groups" by New Jersey's UCC. Exhibit B on page 3 summarizes these groups.

Tables 4, 5, and 6 show authorized housing units as defined and tabulated by the United States Census Bureau. The New Jersey Department of Labor and Workforce Development prepares these tables for publication in the *CONSTRUCTION REPORTER*. Exhibit C on page 4 describes the housing definitions used by the Census Bureau.

The DCA series and the Census Bureau series on authorized housing units differ two important ways. First, the DCA series includes housing units created as a result of permits issued to alter or make additions to existing structures. The Census Bureau counts only those housing units authorized from permits issued for new construction.

Second, the Census Bureau imputes data for localities that fail to submit monthly reports on time. An asterisk in the Census column of data appearing in the Municipal Summary Data table at the back of the *CONSTRUCTION REPORTER* indicates those towns with imputed data. The Census Bureau bases these imputations on historic trends. The DCA series shows information for only those towns that submitted monthly reports. If a municipality failed to submit a monthly report on time, "No report" appears in the appropriate columns in the Municipal Summary Data table.

Additional Terms

A number of other terms appear in the tables throughout the *CONSTRUCTION REPORTER*. Exhibit A on page 2 defines additional construction permit and certificate terms.

Exhibit A

Summary of Building Permit and Certificate Terms	
Addition	Permit type issued for construction work that adds space (volume and square feet) to an existing structure.
Alteration	Permit type involving one or more subcodes (building, electrical, fire protection, and plumbing). The work is authorized for an existing structure and does not add new space.
Certificate	A document issued by a construction official indicating completion of work for which a permit was issued.
Dollar Amount of Construction	Estimated cost of work, as reported by the permit applicant to the construction official.
Demolition	Permit type authorizing the demolition of an existing structure.
Housing Units Certified	A rental or for-sale unit completed and certified by the construction official for conforming to the standards in the New Jersey UCC.
Housing Units Authorized by Building Permits	A rental or for-sale dwelling unit authorized by a construction permit. See Exhibits B and C for explanations of the different definitions of housing structures. The Table 1 series and Tables 2 and 3 show housing units as classified by the residential use groups defined in Exhibit B. Tables 4, 5, and 6 identify authorized housing as defined by the U.S. Census Bureau. (See Exhibit C.)
Housing Unit Demolitions	Rental or for-sale housing to be demolished, as reported to the construction official by permit applicants.
New Construction	Permit type authorizing the start of a new structure.
Permit	A document issued by construction officials that authorizes the construction of a new structure or an addition, alteration, or demolition of an existing structure.
Square Feet	Estimated building area, as reported on permits for new construction and additions.
State Buildings	Buildings or structures constructed or owned by the State or any of its instrumentalities. Construction activity reported in this category includes State offices, colleges, hospitals, prisons, facilities operated by New Jersey Transit and the New Jersey Sports and Exposition Authority, and other State authorities.

Exhibit B

Building Groups	
Residential	Buildings where members of households live. Examples of residential groups include: one- and two-family houses (R-3 and R-5); apartments, dormitories, other multifamily houses (R-2); and mixed-use housing, where the house is a relatively smaller part of a building that has another use (e.g., an apartment over a store). Therapeutic residences (R-4) for 6 to 16 occupants are also included in this category. The Table 1 series and Tables 2 and 3 show authorized housing units by group definition.
----- The following groups refer to industrial, commercial, and other nonresidential structures. -----	
Assembly	Structures where people gather for civic, social, or religious purposes. Examples include: theaters and concert halls (group A-1); night clubs, dance halls, casino gaming areas, restaurants, taverns, and bars (A-2); churches, libraries, amusement arcades, community halls, gymnasiums, indoor swimming pools, art galleries, and museums (A-3); arenas, skating rinks, swimming pools, tennis courts (A-4); and grandstands, bleachers stadiums, and amusement park structures (A-5).
Business	Office buildings (group B) for business transactions of all kinds including banks, corporate offices, professional offices, government buildings, beauty shops, motor vehicle showrooms, and out-patient clinics.
Educational	Buildings for educational purposes through the 12th grade (group E).
High Hazard	Buildings used to manufacture, process, or store materials that constitute a high fire, explosion, or health hazard (group H).
Hotels, Motels, Guest Houses	Buildings for shelter and sleeping where the primary occupants use the facility on a temporary basis, staying less than 30 days (group R-1).
Industrial	Factory buildings where the occupants make, process, or assemble products that are not highly combustible, flammable, or explosive. Includes automotive, appliance, and furniture manufacturers; electric power plants; food processing plants; foundries; and water pumping, solid waste disposal, and incineration plants (group F).
Institutional	Buildings for people who suffer from physical limitations because of age or health; buildings for people detained for penal or correction purposes. Includes: supervised residential homes for six or more people (group I-1); medical and nursing-care facilities (I-2); jails, reformatories, and asylums (I-3); and day care for six or more occupants (I-4).
Mercantile	Buildings for display and sale purposes. Includes retail stores, automotive service stations, drug stores, shops, salesrooms, and markets (group M).
Storage	Buildings used to store goods that are not highly combustible or explosive. Includes warehouses, open parking garages, lumberyards, livestock shelters, and mausoleums (group S).
Signs, Fences, Miscellaneous	Accessory buildings and miscellaneous structures including fences over six feet in height, signs, private garages, sheds, agricultural buildings, carports, retaining walls, tanks, and swimming pools (group U).

Exhibit C

Residential Structures (U.S. Census Bureau Definitions)

Tables 4, 5, and 6 show authorized housing units based on the structure types defined below by the U.S. Census Bureau. The number of units shown in these tables refers to those authorized by building permits issued for new construction only.

Single-Family Houses

Include all detached one-family houses and all attached one-family houses separated by a wall that extends from ground to roof with no common heating system or inter-structural public utilities. Include prefabricated, sectionalized, panelized, and modular homes that are manufactured partially off site, but are transported and assembled at the construction site.

Two-Family Buildings

Include all buildings with two housing units that may be above one another or side by side. If built side by side, the structures (1) do not have a wall that extends from ground to roof; or (2) share a heating system; or (3) have inter-structural public utilities, such as water supply and sewage disposal.

Three- and Four-Family Buildings

Include all buildings with three or four housing units. If built side by side, the structures (1) do not have a wall that extends from ground to roof; or (2) share a heating system; or (3) have inter-structural public utilities, such as water supply and sewage disposal.

Five-or-More-Family Buildings

Include all buildings with five or more housing units. If built side by side, the structures (1) do not have a wall that extends from ground to roof; or (2) share a heating system; or (3) have inter-structural public utilities, such as water supply and sewage disposal.

Private Housing Units

Housing owned by a private company or individual during the period of construction. This includes all housing built by nonprofit organizations and "turnkey" housing; for example, housing that will be sold to a local public housing authority when completed.

Public Housing Units

Housing owned by a governmental body during the period of construction.

Table 1a HOUSE 9/9/13

Housing Units Authorized by Building Permits: New Jersey Counties, July 2013								
County	July				Year-to-Date			
	Total	1 & 2 Family	Multifamily	Mixed Use	Total	1 & 2 Family	Multifamily	Mixed Use
ATLANTIC	25	22	1	2	192	186	1	5
BERGEN	127	60	67	0	931	346	584	1
BURLINGTON	59	29	30	0	321	242	79	0
CAMDEN	23	23	0	0	306	131	57	118
CAPE MAY	39	39	0	0	347	326	17	4
CUMBERLAND	8	8	0	0	90	88	0	2
ESSEX	93	31	62	0	516	161	355	0
GLOUCESTER	59	59	0	0	380	334	46	0
HUDSON	52	24	28	0	2,234	107	2,123	4
HUNTERDON	5	5	0	0	43	43	0	0
MERCER	8	8	0	0	675	74	601	0
MIDDLESEX	136	77	59	0	716	495	213	8
MONMOUTH	102	100	2	0	714	630	61	23
MORRIS	113	51	62	0	625	231	393	1
OCEAN	220	183	36	1	1,066	988	74	4
PASSAIC	22	18	4	0	538	93	445	0
SALEM	6	6	0	0	21	21	0	0
SOMERSET	34	33	1	0	745	332	413	0
SUSSEX	3	3	0	0	37	27	10	0
UNION	95	19	76	0	480	189	290	1
WARREN	10	10	0	0	99	98	0	1
STATE BUILDINGS*	0	0	0	0	0	0	0	0
NEW JERSEY	1,239	808	428	3	11,076	5,142	5,762	172
NJ July 2012	1,553	576	975	2	8,289	3,889	4,386	14

The definition of housing units in the Table 1 series and Table 2 do not match those in Tables 4, 5, and 6. See "Data Comparability" section on page 1, and Exhibits B and C on pages 3 and 4 for details.

*State buildings refer to structures owned or constructed by the State or any of its instrumentalities. See Exhibit A, Summary of Building Permit and Certificate Terms, on page 2.

Table 1b HSEMUN1 9/9/13

Housing Units Authorized by Building Permits: Top Municipalities, July 2013						
Rank	Municipality	County	Total	1 & 2 Family	Multifamily	Mixed Use
1	Clark Township	Union	76	0	76	0
2	Hanover Township	Morris	65	3	62	0
3	Newark City	Essex	62	0	62	0
4	New Brunswick City	Middlesex	59	0	59	0
5	Monroe Township	Middlesex	48	48	0	0
6	Monroe Township	Gloucester	35	35	0	0
7	Point Pleasant Borough	Ocean	35	5	30	0
8	Toms River Township	Ocean	30	30	0	0
9	West New York Town	Hudson	28	0	28	0
10	Lakewood Township	Ocean	28	28	0	0
11	Cliffside Park Borough	Bergen	25	1	24	0
12	Mount Holly Township	Burlington	25	1	24	0
13	Ocean City	Cape May	25	25	0	0
14	Hackensack City	Bergen	22	2	20	0
15	Stafford Township	Ocean	22	22	0	0
16	Howell Township	Monmouth	20	20	0	0
17	North Caldwell Borough	Essex	19	19	0	0
18	Long Beach Township	Ocean	16	16	0	0
19	Lacey Township	Ocean	14	14	0	0
20	Little Egg Harbor Township	Ocean	14	14	0	0
	TOP MUNICIPALITIES		668	283	385	0
	NEW JERSEY		1,239	808	428	3
	TOP AS % OF STATE		53.9%	35.0%	90.0%	0.0%

The definition of housing units in the Table 1 series and Table 2 do not match those in Tables 4, 5, and 6. See "Data Comparability" section on page 1, and Exhibits B and C on pages 3 and 4 for details.

Table 1c HSEMUN2 9/9/13

Housing Units Authorized by Building Permits: Top Municipalities, January through July 2013						
Rank	Municipality	County	Total	1 & 2 Family	Multifamily	Mixed Use
1	Jersey City	Hudson	1,084	39	1,045	0
2	Weehawken Township	Hudson	742	0	742	0
3	Princeton (1114)	Mercer	451	9	442	0
4	Morristown Town	Morris	270	2	268	0
5	Lyndhurst Township	Bergen	269	11	258	0
6	Monroe Township	Middlesex	265	265	0	0
7	Lakewood Township	Ocean	243	229	14	0
8	Bound Brook Borough	Somerset	241	1	240	0
9	Bayonne City	Hudson	232	28	204	0
10	Franklin Township	Somerset	206	105	101	0
11	Elizabeth City	Union	177	44	132	1
12	Bloomington Borough	Passaic	168	0	168	0
13	Trenton City	Mercer	148	0	148	0
14	City of Orange Township	Essex	144	0	144	0
15	Fair Lawn Borough	Bergen	135	1	134	0
16	Ocean City	Cape May	133	130	0	3
17	Toms River Township	Ocean	132	131	0	1
18	Voorhees Township	Camden	126	8	0	118
19	Hanover Township	Morris	123	9	113	1
20	Passaic City	Passaic	123	6	117	0
	TOP MUNICIPALITIES		5,412	1,018	4,270	124
	NEW JERSEY		11,076	5,142	5,762	172
	TOP AS % OF STATE		48.9%	19.8%	74.1%	72.1%

The definition of housing units in the Table 1 series and Table 2 do not match those in Tables 4, 5, and 6. See "Data Comparability" section on page 1, and Exhibits B and C on pages 3 and 4 for details.

Table 1d NEWHSE 9/9/13

Housing Units Authorized by New Construction Building Permits: New Jersey Counties, July 2013								
County	July				Year-to-Date			
	Total	1 & 2 Family	Multifamily	Mixed Use	Total	1 & 2 Family	Multifamily	Mixed Use
ATLANTIC	25	22	1	2	181	177	1	3
BERGEN	106	59	47	0	836	341	494	1
BURLINGTON	59	29	30	0	318	241	77	0
CAMDEN	23	23	0	0	267	126	23	118
CAPE MAY	35	35	0	0	330	312	17	1
CUMBERLAND	7	7	0	0	74	74	0	0
ESSEX	93	31	62	0	515	160	355	0
GLOUCESTER	58	58	0	0	372	330	42	0
HUDSON	48	20	28	0	2,142	99	2,039	4
HUNTERDON	5	5	0	0	43	43	0	0
MERCER	8	8	0	0	675	74	601	0
MIDDLESEX	134	75	59	0	673	456	211	6
MONMOUTH	100	98	2	0	707	623	61	23
MORRIS	113	51	62	0	622	229	393	0
OCEAN	212	175	36	1	1,040	962	74	4
PASSAIC	21	17	4	0	537	92	445	0
SALEM	6	6	0	0	21	21	0	0
SOMERSET	34	33	1	0	744	331	413	0
SUSSEX	3	3	0	0	37	27	10	0
UNION	95	19	76	0	470	188	281	1
WARREN	10	10	0	0	98	98	0	0
STATE BUILDINGS*	0	0	0	0	0	0	0	0
NEW JERSEY	1,195	784	408	3	10,702	5,004	5,537	161
NJ July 2012	1,537	563	973	1	8,195	3,826	4,359	10

The definition of housing units in the Table 1 series and Table 2 do not match those in Tables 4, 5, and 6. See "Data Comparability" section on page 1, and Exhibits B and C on pages 3 and 4 for details.

*State buildings refer to structures owned or constructed by the State or any of its instrumentalities. See Exhibit A, Summary of Building Permit and Certificate Terms, on page 2.

Housing Units Authorized by Building Permits, January-July 2013

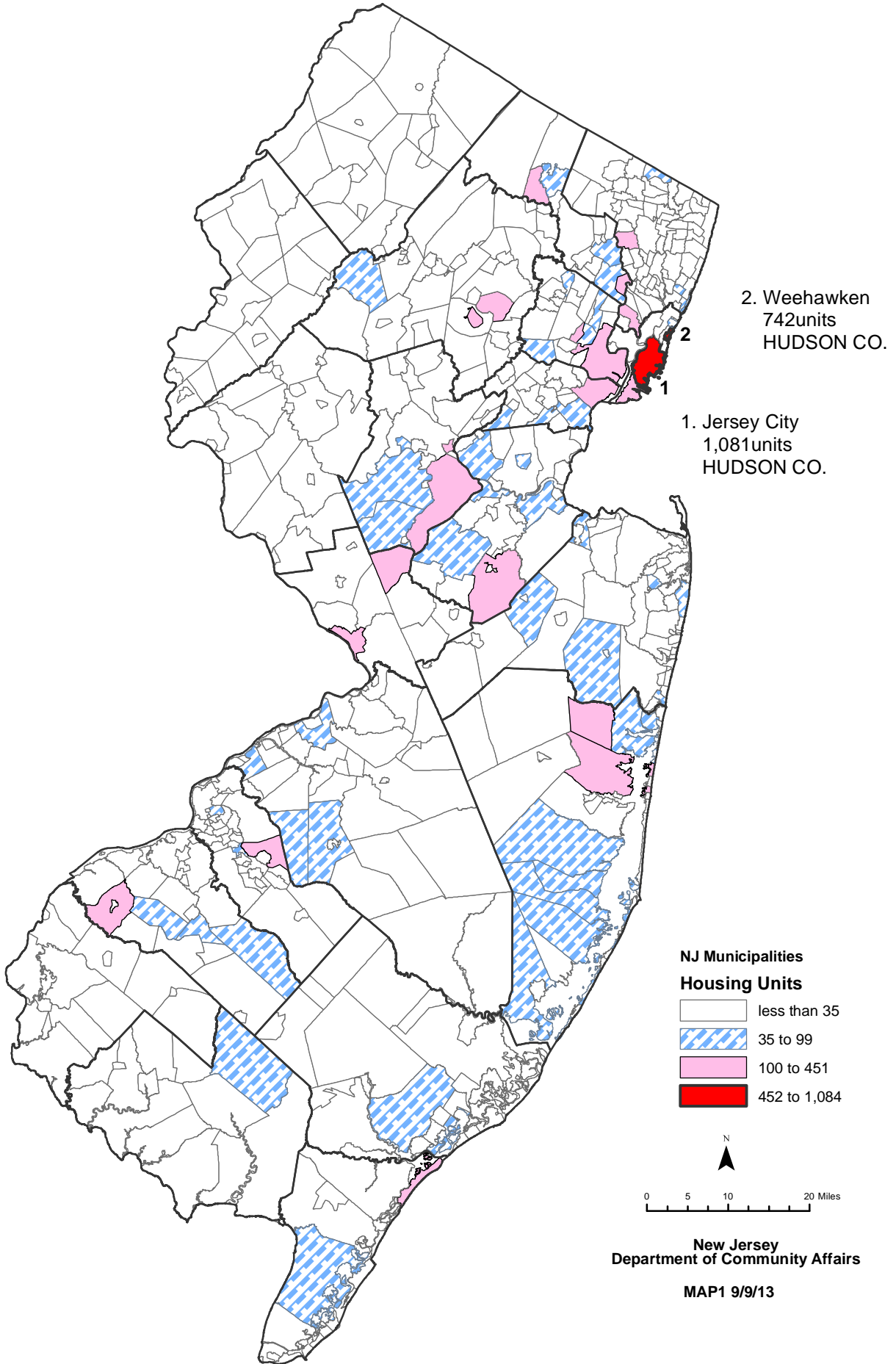


Table 2 CERTS 9/9/13

Housing Units Certified: New Jersey Counties, July 2013								
County	July				Year-to-Date			
	Total	1 & 2 Family	Multi-family	Mixed Use	Total	1 & 2 Family	Multi-family	Mixed Use
ATLANTIC	42	41	0	1	188	184	2	2
BERGEN	76	36	40	0	488	258	227	3
BURLINGTON	40	40	0	0	216	209	7	0
CAMDEN	51	15	36	0	300	99	201	0
CAPE MAY	68	63	4	1	320	304	11	5
CUMBERLAND	10	10	0	0	80	80	0	0
ESSEX	22	19	3	0	282	124	158	0
GLOUCESTER	39	39	0	0	269	247	22	0
HUDSON	79	6	73	0	299	52	247	0
HUNTERDON	4	3	1	0	61	40	21	0
MERCER	136	6	130	0	356	50	306	0
MIDDLESEX	54	49	5	0	711	360	351	0
MONMOUTH	96	62	34	0	467	316	148	3
MORRIS	31	25	5	1	266	186	78	2
OCEAN	122	105	16	1	743	532	209	2
PASSAIC	21	6	14	1	163	41	121	1
SALEM	3	3	0	0	25	25	0	0
SOMERSET	19	19	0	0	630	127	502	1
SUSSEX	5	4	0	1	54	37	15	2
UNION	64	13	51	0	230	104	126	0
WARREN	7	7	0	0	60	60	0	0
STATE BUILDINGS*	0	0	0	0	0	0	0	0
NEW JERSEY	989	571	412	6	6,208	3,435	2,752	21
NJ July 2012	735	601	131	3	6,306	3,530	2,758	18

The definition of housing units in the Table 1 series and Table 2 do not match those in Tables 4, 5, and 6. See "Data Comparability" section on page 1, and Exhibits B and C on pages 3 and 4 for details.

*State buildings refer to structures owned or constructed by the State or any of its instrumentalities. See Exhibit A, Summary of Building Permit and Certificate Terms, on page 2.

Table 3 DEMOS 9/9/13

Housing Units Demolished: New Jersey Counties, July 2013								
County	July				Year-to-Date			
	Total	1 & 2 Family	Multifamily	Mixed Use	Total	1 & 2 Family	Multifamily	Mixed Use
ATLANTIC	28	25	3	0	153	141	7	5
BERGEN	29	29	0	0	211	202	5	4
BURLINGTON	8	8	0	0	32	31	0	1
CAMDEN	40	40	0	0	102	102	0	0
CAPE MAY	34	31	3	0	281	269	12	0
CUMBERLAND	2	2	0	0	47	39	4	4
ESSEX	16	7	9	0	100	79	21	0
GLOUCESTER	7	7	0	0	31	31	0	0
HUDSON	13	13	0	0	84	68	16	0
HUNTERDON	0	0	0	0	10	10	0	0
MERCER	2	2	0	0	88	88	0	0
MIDDLESEX	34	30	4	0	140	134	4	2
MONMOUTH	39	36	0	3	480	453	20	7
MORRIS	19	19	0	0	113	112	0	1
OCEAN	327	326	0	1	1,874	1,846	6	22
PASSAIC	14	14	0	0	63	55	6	2
SALEM	2	2	0	0	8	8	0	0
SOMERSET	4	4	0	0	28	28	0	0
SUSSEX	2	2	0	0	24	23	0	1
UNION	24	24	0	0	89	81	6	2
WARREN	2	2	0	0	26	26	0	0
STATE BUILDINGS*	0	0	0	0	0	0	0	0
NEW JERSEY	646	623	19	4	3,984	3,826	107	51
NJ July 2012	206	167	37	2	1,654	1,453	149	52

*State buildings refer to structures owned or constructed by the State or any of its instrumentalities. See Exhibit A, Summary of Building Permit and Certificate Terms, on page 2.

Table 4

Residential Construction Authorized by Building Permits (Census Definitions) New Jersey, July 2013						
Type of Construction	June 2013	July 2013	Year to Date*			
			2012	2013	Change	
					Number	Percent
Total Private Units Authorized	2,059	2,261	10,030	13,234	3,204	31.9
Single Family	948	981	4,104	5,617	1,513	36.9
Two Family	46	74	350	408	58	16.6
Three or Four Family	51	13	159	202	43	27.0
Five or More Family	1,014	1,193	5,417	7,007	1,590	29.4
CENSUS1 7/20/01						

*Year-to-date totals include data received too late for monthly tabulation. The Census Bureau allocates revisions to prior months and therefore monthly year-to-date totals reflect these changes.

Authorized dwelling units in the Table 1 series and Table 2 do not match those in Tables 4, 5, and 6 due to definitional differences. See "Data Comparability" section on page 1, and Exhibits B and C on pages 3 and 4 for details.

Source: U.S. Census Bureau, Manufacturing and Construction Division
Prepared by: N.J. Department of Labor and Workforce Development, August, 2013

Table 5

Residential Construction Authorized by Building Permits (Census Definitions) New Jersey, 1991 to Present						
Year and Month	Number of Municipalities	Total	Single Family	Two Family	3 or 4 Family	5 or More Family
1991	567	14,856	12,869	402	101	1,484
1992	567	19,072	16,506	510	74	1,982
1993	567	25,188	21,340	758	129	2,961
1994	567	25,388	22,437	722	121	2,108
1995	567	21,521	18,341	670	158	2,352
1996	567	24,173	20,853	880	211	2,229
1997	566	28,018	23,472	916	324	3,306
1998	566	31,345	25,459	1,172	221	4,493
1999	566	31,976	25,129	1,468	290	5,089
2000	566	34,585	25,260	1,844	305	7,176
2001	566	28,267	21,503	1,827	779	4,158
2002	566	30,441	22,379	2,110	742	5,210
2003	566	32,984	22,163	2,870	912	7,039
2004	566	35,936	22,429	3,300	1,476	8,731
2005	566	38,588	22,264	3,212	1,437	11,675
2006	566	34,323	17,113	3,088	1,708	12,414
2007	566	25,389	13,066	1,692	1,311	9,320
2008	566	18,363	9,169	664	411	8,119
2009	566	12,421	7,211	400	206	4,604
2010	566	13,540	7,383	680	276	5,201
2011	566	13,079	6,509	438	178	5,954
2012	566	17,988	7,290	566	365	9,767
2013						
January †	565	1,721	636	40	18	1,027
February †	565	1,094	502	44	74	474
March †	565	1,684	660	64	8	952
April †	565	1,854	931	56	15	852
May †	565	2,561	959	84	23	1,495
June †	565	2,059	948	46	51	1,014
July	565	2,261	981	74	13	1,193
<u>Year to Date*</u>						
July 2012	---	10,030	4,104	350	159	5,417
July 2013	---	13,234	5,617	408	202	7,007

†Revised – Monthly data are revised to reflect changes in the year-to-date total.

*Year-to-date totals include data received too late for monthly tabulation. The Census Bureau allocates revisions to prior months and therefore monthly year-to-date totals reflect these changes.

Authorized dwelling units in the Table 1 series and Table 2 do not match those in Tables 4, 5, and 6 due to definitional differences. See "Data Comparability" section on page 1, and Exhibits B and C on pages 3 and 4 for details.

Source: U.S. Census Bureau, Manufacturing and Construction Division

Prepared by: N.J. Department of Labor and Workforce Development, August, 2013

Table 6

Residential Construction Authorized by Building Permits (Census Definitions) New Jersey Counties, July 2013						
County	July					Total Year to Date* 2013
	Total	Single Family	Two Family	3 or 4 Family	5 or More Family	
ATLANTIC	37	27	0	0	10	233
BERGEN	281	92	14	3	172	1,474
BURLINGTON	75	48	0	0	27	370
CAMDEN	86	38	2	0	46	460
CAPE MAY	38	22	16	0	0	328
CUMBERLAND	23	23	0	0	0	132
ESSEX	137	29	6	3	99	934
GLOUCESTER	65	65	0	0	0	461
HUDSON	193	5	12	0	176	1,863
HUNTERDON	18	8	0	0	10	118
MERCER	44	13	8	0	23	743
MIDDLESEX	170	87	0	0	83	853
MONMOUTH	213	108	0	0	105	876
MORRIS	336	61	0	0	275	1,140
OCEAN	179	141	8	0	30	905
PASSAIC	66	25	2	4	35	557
SALEM	6	6	0	0	0	21
SOMERSET	78	38	0	0	40	832
SUSSEX	28	13	0	0	15	151
UNION	160	114	6	3	37	602
WARREN	28	18	0	0	10	181
NEW JERSEY	2,261	981	74	13	1,193	13,234

CENSUS3 7/20/01

*Year-to-date totals include data received too late for monthly tabulation. See Table 5 for revised statewide data for prior months.

Authorized dwelling units in the Table 1 series and Table 2 do not match those in Tables 4, 5, and 6 due to definitional differences. See "Data Comparability" section on page 1, and Exhibits B and C on pages 3 and 4 for details.

Source: U.S. Census Bureau, Manufacturing and Construction Division
Prepared by: N.J. Department of Labor and Workforce Development, August, 2013

Table 7a OFFCSPC 9/9/13

Office Square Feet Authorized by Building Permits: New Jersey Counties, July 2013						
County	July			Year-to-Date		
	Total	New Construction	Additions	Total	New Construction	Additions
ATLANTIC	5,964	5,964	0	69,639	69,639	0
BERGEN	13,160	10,019	3,141	286,556	272,654	13,902
BURLINGTON	218,425	218,425	0	312,928	311,728	1,200
CAMDEN	0	0	0	26,048	15,068	10,980
CAPE MAY	0	0	0	22,168	22,108	60
CUMBERLAND	1,444	0	1,444	28,871	2,880	25,991
ESSEX	45,987	43,927	2,060	830,085	790,218	39,867
GLOUCESTER	1,892	1,892	0	58,527	46,350	12,177
HUDSON	0	0	0	11,633	8,563	3,070
HUNTERDON	0	0	0	56,152	46,040	10,112
MERCER	3,364	3,364	0	58,469	41,183	17,286
MIDDLESEX	80,598	36,249	44,349	484,892	377,088	107,804
MONMOUTH	122,702	61,331	61,371	204,631	121,548	83,083
MORRIS	20,486	20,353	133	69,395	30,930	38,465
OCEAN	43,729	38,239	5,490	170,126	115,460	54,666
PASSAIC	968	0	968	30,044	24,030	6,014
SALEM	14,300	14,300	0	14,300	14,300	0
SOMERSET	1,344	0	1,344	82,346	81,001	1,345
SUSSEX	4,048	4,000	48	28,782	28,410	372
UNION	1,477	1,477	0	205,184	183,345	21,839
WARREN	1,040	1,040	0	7,717	6,966	751
STATE BUILDINGS*	0	0	0	47,635	47,635	0
NEW JERSEY	580,928	460,580	120,348	3,106,128	2,657,144	448,984
NJ July 2012	480,985	368,268	112,717	4,177,557	3,211,245	966,312

*State buildings refer to structures owned or constructed by the State or any of its instrumentalities. See Exhibit A, Summary of Building Permit and Certificate Terms, on page 2.

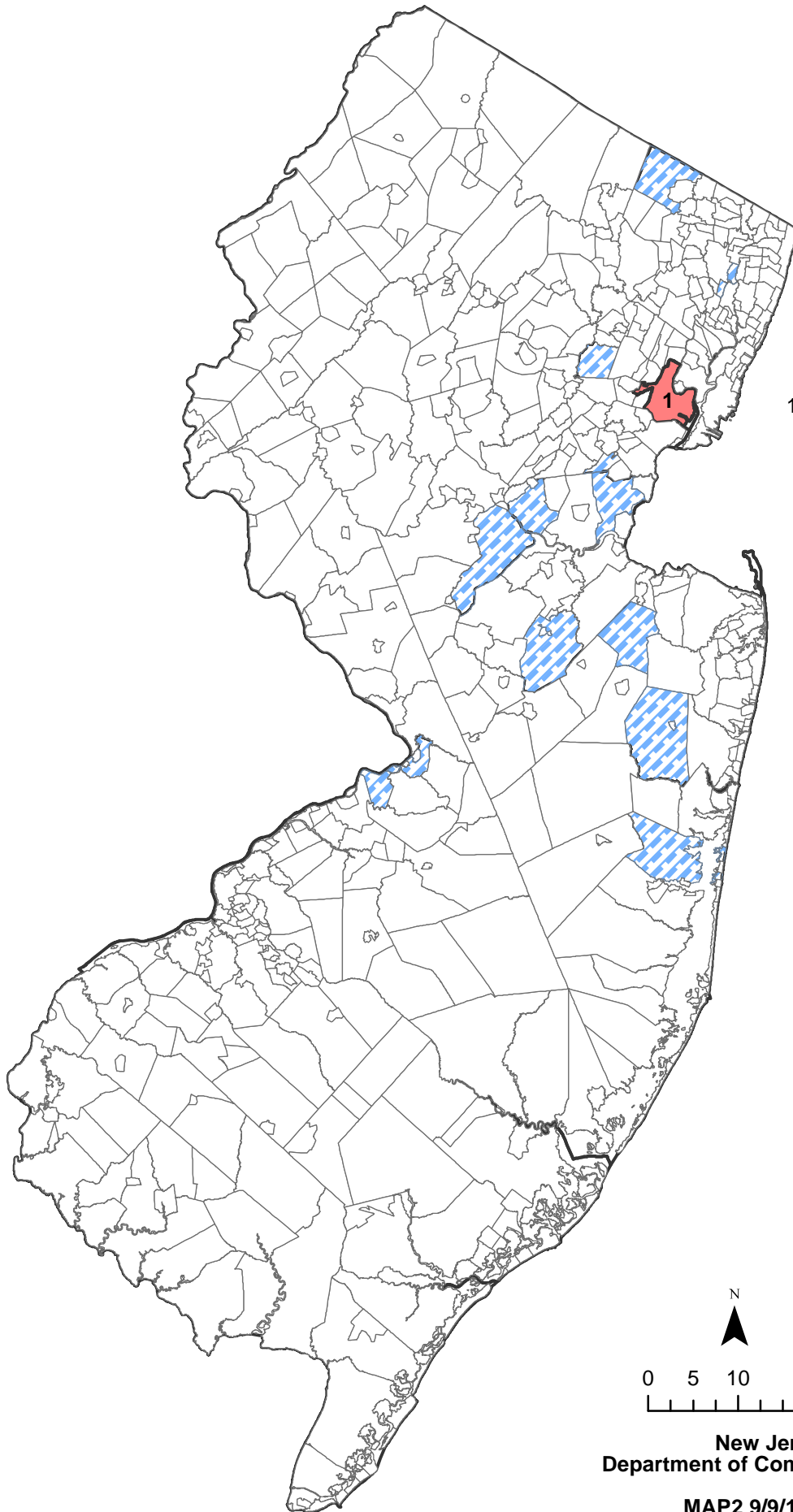
Table 7b OFFCMUN1 9/9/13

Office Square Feet Authorized by Building Permits: New Jersey Top Municipalities, July 2013					
Rank	Municipality	County	Total	New Construction	Additions
1	Florence Township	Burlington	218,425	218,425	0
2	Marlboro Township	Monmouth	57,179	3,263	53,916
3	Howell Township	Monmouth	46,509	39,054	7,455
4	Piscataway Township	Middlesex	38,124	0	38,124
5	Livingston Township	Essex	34,103	34,103	0
6	New Brunswick City	Middlesex	30,509	30,509	0
7	East Hanover Township	Morris	20,353	20,353	0
8	Manchester Township	Ocean	15,948	15,948	0
9	Lacey Township	Ocean	15,608	15,608	0
10	Wall Township	Monmouth	14,184	14,184	0
11	Newark City	Essex	11,884	9,824	2,060
12	Elmer Borough	Salem	8,900	8,900	0
13	Barnegat Township	Ocean	6,683	6,683	0
14	Hackensack City	Bergen	6,600	6,600	0
15	South Brunswick Township	Middlesex	6,225	0	6,225
16	North Brunswick Township	Middlesex	5,740	5,740	0
17	Pittsgrove Township	Salem	5,400	5,400	0
18	Long Branch City	Monmouth	4,830	4,830	0
19	Atlantic City	Atlantic	4,524	4,524	0
20	Little Egg Harbor Township	Ocean	4,000	0	4,000
TOP MUNICIPALITIES			555,728	443,948	111,780
NEW JERSEY			580,928	460,580	120,348
TOP AS % OF STATE			95.7%	96.4%	92.9%

Table 7c OFFCMUN2 9/9/13

Office Square Feet Authorized by Building Permits: New Jersey Top Municipalities, January-July 2013					
Rank	Municipality	County	Total	New Construction	Additions
1	Newark City	Essex	744,890	742,830	2,060
2	Florence Township	Burlington	218,425	218,425	0
3	Piscataway Township	Middlesex	210,469	129,815	80,654
4	Clark Township	Union	157,040	157,040	0
5	Maywood Borough	Bergen	111,836	111,834	2
6	Howell Township	Monmouth	74,459	67,004	7,455
7	Bordentown Township	Burlington	73,303	73,303	0
8	Franklin Township	Somerset	70,100	70,100	0
9	Livingston Township	Essex	68,064	34,103	33,961
10	Toms River Township	Ocean	67,366	24,809	42,557
11	Marlboro Township	Monmouth	57,179	3,263	53,916
12	River Edge Borough	Bergen	52,351	52,351	0
13	Woodbridge Township	Middlesex	51,493	51,493	0
14	Mahwah Township	Bergen	50,500	50,500	0
15	Monroe Township	Middlesex	50,000	50,000	0
16	South Brunswick Township	Middlesex	43,288	26,858	16,430
17	Hamilton Township	Atlantic	42,475	42,475	0
18	Raritan Township	Hunterdon	41,180	41,180	0
19	Hamilton Township	Mercer	39,493	37,819	1,674
20	Old Bridge Township	Middlesex	31,950	31,950	0
TOP MUNICIPALITIES			2,255,861	2,017,152	238,709
NEW JERSEY			3,106,128	2,657,144	448,984
TOP AS % OF STATE			72.6%	75.9%	53.2%

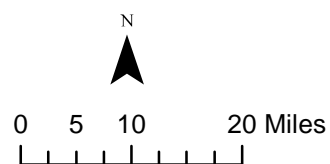
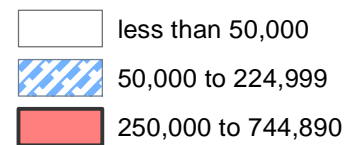
Office Square Feet Authorized by Building Permits January-July 2013



1. Newark
733,006 sq ft
ESSEX CO.

NJ Municipalities

Office Square Feet



New Jersey
Department of Community Affairs

MAP2 9/9/13

Table 8 CERTOFF 9/9/13

Office Square Feet Certified: New Jersey Counties, July 2013						
County	July			Year-to-Date		
	Total	New Construction	Additions	Total	New Construction	Additions
ATLANTIC	3,504	3,504		30,436	14,655	15,781
BERGEN	5,601	5,400	201	157,022	135,219	21,803
BURLINGTON	0	0	0	52,047	49,324	2,723
CAMDEN	8,980	8,980		424,230	424,230	0
CAPE MAY	28,093	24,893	3,200	20,234	15,672	4,562
CUMBERLAND	0	0	0	3,080	2,880	200
ESSEX	21,346	19,960	1,386	52,773	45,431	7,342
GLOUCESTER	0	0	0	16,660	7,590	9,070
HUDSON	48,497	48,497		12,405	0	12,405
HUNTERDON	1		1	47,625	43,744	3,881
MERCER	1,832	1,832		277,178	260,378	16,800
MIDDLESEX	0	0	0	1,139,448	999,063	140,385
MONMOUTH	9,303	9,303		179,719	164,020	15,699
MORRIS	11,200	11,200		60,213	40,416	19,797
OCEAN	16,201	16,201		18,912	18,911	1
PASSAIC	5,454	4,554	900	240,693	236,395	4,298
SALEM	0	0	0	720		720
SOMERSET	0	0	0	17,337	17,257	80
SUSSEX	0	0	0	0	0	0
UNION	139,675		139,675	51,037	33,220	17,817
WARREN	96	96		3,095	3,095	0
STATE BUILDINGS*	7,630	7,630		59,456	59,456	0
NEW JERSEY	307,413	162,050	145,363	2,864,320	2,570,956	293,364
NJ July 2012	296,908	252,293	44,615	1,990,552	1,576,728	413,824

*State buildings refer to structures owned or constructed by the State or any of its instrumentalities. See Exhibit A, Summary of Building Permit and Certificate Terms, on page 2.

Table 9a RETSPACE 9/9/13

Retail Square Feet Authorized by Building Permits: New Jersey Counties, July 2013						
County	July			Year-to-Date		
	Total	New Construction	Additions	Total	New Construction	Additions
ATLANTIC	0	0	0	718	0	718
BERGEN	0	0	0	62,780	52,904	9,876
BURLINGTON	0	0	0	28,619	23,845	4,774
CAMDEN	0	0	0	21,508	21,508	0
CAPE MAY	0	0	0	0	0	0
CUMBERLAND	0	0	0	0	0	0
ESSEX	6,800	6,800	0	136,708	19,995	116,713
GLOUCESTER	0	0	0	8,761	4,149	4,612
HUDSON	0	0	0	0	0	0
HUNTERDON	4,800	4,800	0	55,587	55,587	0
MERCER	0	0	0	14,800	14,800	0
MIDDLESEX	0	0	0	223,036	223,036	0
MONMOUTH	0	0	0	64,834	63,064	1,770
MORRIS	0	0	0	109,758	108,860	898
OCEAN	4,000	4,000	0	32,581	31,295	1,286
PASSAIC	0	0	0	8,688	6,598	2,090
SALEM	0	0	0	3,034	0	3,034
SOMERSET	0	0	0	208,772	160,708	48,064
SUSSEX	0	0	0	0	0	0
UNION	0	0	0	17,245	7,538	9,707
WARREN	0	0	0	1,922	2	1,920
STATE BUILDINGS*	0	0	0	0	0	0
NEW JERSEY	15,600	15,600	0	999,351	793,889	205,462
NJ July 2012	123,288	65,901	57,387	1,016,243	366,019	650,224

*State buildings refer to structures owned or constructed by the State or any of its instrumentalities. See Exhibit A, Summary of Building Permit and Certificate Terms, on page 2.

Table 9b RETMUN1 9/9/13

Retail Square Feet Authorized by Building Permits: New Jersey Top Municipalities, July 2013					
Rank	Municipality	County	Total	New Construction	Additions
1	Belleville Township	Essex	6,800	6,800	0
2	Clinton Township	Hunterdon	4,800	4,800	0
3	Ship Bottom Borough	Ocean	4,000	4,000	0
4					
5					
6					
7					
8					
9					
10					
11					
12					
13					
14					
15					
16					
17					
18					
19					
20					
	TOP MUNICIPALITIES		15,600	15,600	0
	NEW JERSEY		15,600	15,600	0
	TOP AS % OF STATE		100.0%	100.0%	N/A

Table 9c RETMUN2 9/9/13

Retail Square Feet Authorized by Building Permits: New Jersey Top Municipalities, January-July 2013					
Rank	Municipality	County	Total	New Construction	Additions
1	Old Bridge Township	Middlesex	178,910	178,910	0
2	North Plainfield Borough	Somerset	156,166	156,166	0
3	South Orange Village	Essex	116,713	0	116,713
4	Hanover Township	Morris	77,052	77,052	0
5	East Brunswick Township	Middlesex	44,126	44,126	0
6	Manville Borough	Somerset	43,479	0	43,479
7	Oceanport Borough	Monmouth	41,737	41,737	0
8	Evesham Township	Burlington	28,619	23,845	4,774
9	Garfield City	Bergen	27,720	27,720	0
10	Northvale Borough	Bergen	24,546	24,546	0
11	Flemington Borough	Hunterdon	21,600	21,600	0
12	Howell Township	Monmouth	19,960	19,960	0
13	Cherry Hill Township	Camden	18,568	18,568	0
14	Randolph Township	Morris	17,398	17,398	0
15	Raritan Township	Hunterdon	17,325	17,325	0
16	Clinton Township	Hunterdon	16,662	16,662	0
17	Robbinsville Township	Mercer	14,800	14,800	0
18	Jackson Township	Ocean	12,931	12,931	0
19	Long Hill Township	Morris	12,610	12,610	0
20	Newark City	Essex	10,527	10,527	0
TOP MUNICIPALITIES			901,449	736,483	164,966
NEW JERSEY			999,351	793,889	205,462
TOP AS % OF STATE			90.2%	92.8%	80.3%

Retail Square Feet Authorized by Building Permits January-July 2013

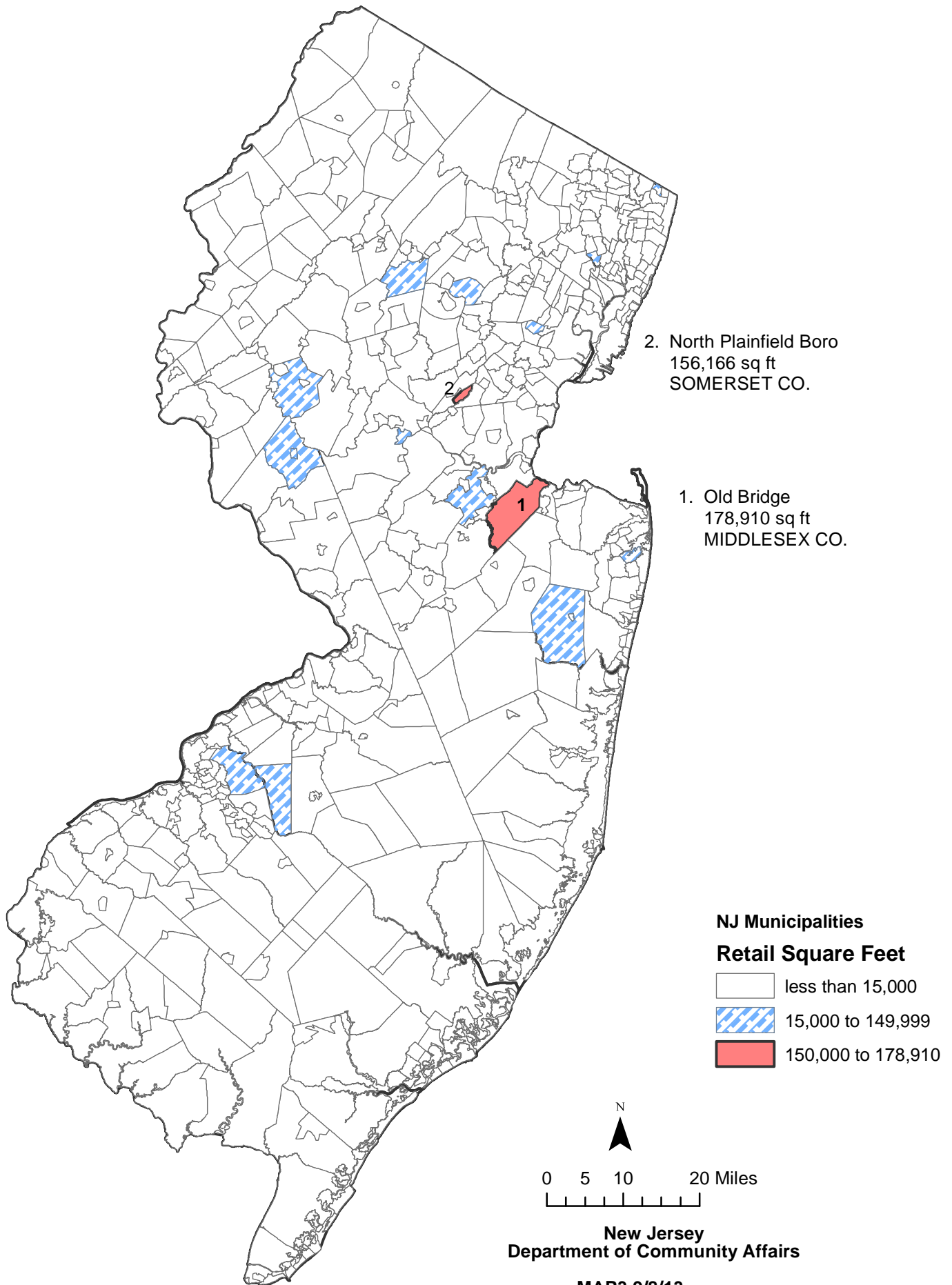


Table 10 CERTRET 9/9/13

Retail Square Feet Certified: New Jersey Counties, July 2013						
County	July			Year-to-Date		
	Total	New Construction	Additions	Total	New Construction	Additions
ATLANTIC	51,489	25,489	26,000	56,514	30,514	26,000
BERGEN	0	0	0	49,131	44,202	4,929
BURLINGTON	17,514	17,514	0	19,629	19,629	0
CAMDEN	0	0	0	16,000	6,000	10,000
CAPE MAY	0	0	0	5,025	5,025	0
CUMBERLAND	0	0	0	19,562	16,765	2,797
ESSEX	0	0	0	2,244	2,244	0
GLOUCESTER	17,842	17,842	0	17,842	17,842	0
HUDSON	0	0	0	17,467	17,467	0
HUNTERDON	0	0	0	0	0	0
MERCER	0	0	0	200	0	200
MIDDLESEX	0	0	0	7,192	6,552	640
MONMOUTH	0	0	0	3,235	1,210	2,025
MORRIS	0	0	0	4,230	4,230	0
OCEAN	0	0	0	9,220	9,220	0
PASSAIC	0	0	0	0	0	0
SALEM	0	0	0	24,200	24,200	0
SOMERSET	0	0	0	16,240		16,240
SUSSEX	0	0	0	39,466	39,466	0
UNION	0	0	0	5,583	5,583	0
WARREN	0	0	0	0	0	0
STATE BUILDINGS*	0	0	0	0	0	0
NEW JERSEY	86,845	60,845	26,000	312,980	250,149	62,831
NJ July 2012	48,077	42,123	5,954	743,857	719,165	24,692

*State buildings refer to structures owned or constructed by the State or any of its instrumentalities. See Exhibit A, Summary of Building Permit and Certificate Terms, on page 2.

Table 11a WORK 9/9/13

Dollar Amount of Construction Authorized by Building Permits: New Jersey Counties, July 2013						
County	July			Year-to-Date		
	Total	Residential	Nonresidential	Total	Residential	Nonresidential
ATLANTIC	\$15,616,000	\$9,783,085	\$5,832,915	\$201,415,950	\$105,377,852	\$96,038,098
BERGEN	136,722,228	75,190,338	61,531,890	881,478,328	447,234,121	434,244,207
BURLINGTON	36,005,502	18,644,101	17,361,401	237,692,266	111,896,524	125,795,742
CAMDEN	34,237,032	12,975,709	21,261,323	213,554,742	86,957,802	126,596,940
CAPE MAY	17,544,398	14,810,993	2,733,405	165,887,489	134,967,332	30,920,157
CUMBERLAND	7,524,855	2,599,438	4,925,417	60,133,810	17,852,034	42,281,776
ESSEX	71,257,768	47,784,971	23,472,797	593,554,887	250,102,051	343,452,836
GLOUCESTER	21,774,036	12,354,209	9,419,827	149,526,695	92,485,455	57,041,240
HUDSON	81,130,081	33,391,030	47,739,051	755,407,774	440,816,883	314,590,891
HUNTERDON	13,098,537	6,996,957	6,101,580	93,082,617	46,729,742	46,352,875
MERCER	36,545,994	14,443,343	22,102,651	533,274,760	182,844,298	350,430,462
MIDDLESEX	105,699,514	41,258,195	64,441,319	627,923,461	231,194,961	396,728,500
MONMOUTH	91,900,205	67,552,784	24,347,421	644,724,879	436,065,315	208,659,564
MORRIS	67,842,666	43,812,119	24,030,547	439,216,271	254,471,825	184,744,446
OCEAN	75,683,607	60,770,772	14,912,835	532,447,065	407,856,135	124,590,930
PASSAIC	26,507,245	12,930,476	13,576,769	205,337,736	108,692,856	96,644,880
SALEM	5,686,863	1,256,689	4,430,174	21,649,121	10,142,580	11,506,541
SOMERSET	50,188,551	25,844,712	24,343,839	422,998,175	201,828,299	221,169,876
SUSSEX	11,337,727	5,330,782	6,006,945	78,849,767	38,276,750	40,573,017
UNION	49,471,924	25,694,408	23,777,516	300,656,665	182,683,613	117,973,052
WARREN	5,555,229	3,104,295	2,450,934	45,617,269	27,976,787	17,640,482
STATE BUILDINGS*	29,080,533	104,811	28,975,722	261,736,530	4,168,811	257,567,719
NEW JERSEY	\$990,410,495	\$536,634,217	\$453,776,278	\$7,466,166,257	\$3,820,622,026	\$3,645,544,231
NJ July 2012	\$1,061,652,940	\$508,020,575	\$553,632,365	\$6,549,856,703	\$3,096,635,779	\$3,453,220,924

*State buildings refer to structures owned or constructed by the State or any of its instrumentalities. See Exhibit A, Summary of Building Permit and Certificate Terms, on page 2.

Table 11c WORK1 9/9/13

Dollar Amount Construction Authorized by Building Permits: Top Municipalities, July 2013					
Rank	Municipality	County	Total	Residential	Nonresidential
1	Secaucus Town	Hudson	\$31,358,473	\$562,659	\$30,795,814
2	Newark City	Essex	26,269,167	14,793,162	11,476,005
3	Englewood City	Bergen	19,329,859	1,507,493	17,822,366
4	Weehawken Township	Hudson	18,576,442	17,698,557	877,885
5	New Brunswick City	Middlesex	18,294,878	2,060,720	16,234,158
6	Jersey City	Hudson	17,442,448	5,809,110	11,633,338
7	Woodbridge Township	Middlesex	14,351,017	3,133,643	11,217,374
8	Bridgewater Township	Somerset	13,434,174	3,972,393	9,461,781
9	Linden City	Union	12,726,270	1,408,455	11,317,815
10	Millburn Township	Essex	11,444,366	7,792,941	3,651,425
11	Toms River Township	Ocean	11,397,967	7,643,681	3,754,286
12	Middletown Township	Monmouth	11,253,969	5,811,484	5,442,485
13	Camden City	Camden	10,774,841	1,750,704	9,024,137
14	Monroe Township	Middlesex	10,158,623	8,981,913	1,176,710
15	Princeton (1114)	Mercer	10,120,276	6,208,736	3,911,540
16	Paramus Borough	Bergen	9,559,366	4,801,107	4,758,259
17	West Long Branch Borough	Monmouth	9,201,062	8,832,555	368,507
18	Marlboro Township	Monmouth	9,009,568	5,733,033	3,276,535
19	Old Bridge Township	Middlesex	8,703,587	2,196,717	6,506,870
20	Lawrence Township	Mercer	8,629,305	1,230,968	7,398,337
TOP MUNICIPALITIES			273,406,353	111,930,031	170,105,627
NEW JERSEY			\$990,410,495	\$536,634,217	\$453,776,278
TOP AS % OF STATE			27.6%	20.9%	37.5%

Table 11c WORK2 9/9/13

Dollar Amount Construction Authorized by Building Permits: Top Municipalities, January-July 2013					
Rank	Municipality	County	Total	Residential	Nonresidential
1	Jersey City	Hudson	\$381,411,939	\$210,871,225	\$170,540,714
2	Newark City	Essex	255,341,146	34,179,146	221,162,000
3	Princeton (1114)	Mercer	151,076,603	90,879,048	60,197,555
4	Weehawken Township	Hudson	134,160,708	130,001,495	4,159,213
5	Robbinsville Township	Mercer	131,017,867	7,931,708	123,086,159
6	Piscataway Township	Middlesex	107,701,342	17,211,683	90,489,659
7	Lawrence Township	Mercer	91,343,727	7,591,716	83,752,011
8	Paramus Borough	Bergen	89,943,890	15,614,184	74,329,706
9	Woodbridge Township	Middlesex	88,762,241	18,853,649	69,908,592
10	Franklin Township	Somerset	87,937,599	38,980,089	48,957,510
11	Teaneck Township	Bergen	78,054,362	18,099,905	59,954,457
12	Secaucus Town	Hudson	76,138,059	7,975,482	68,162,577
13	Toms River Township	Ocean	73,339,906	48,325,460	25,014,446
14	Monroe Township	Middlesex	70,097,501	53,088,698	17,008,803
15	Lakewood Township	Ocean	62,688,079	36,549,890	26,138,189
16	Atlantic City	Atlantic	56,686,559	10,029,409	46,657,150
17	Branchburg Township	Somerset	56,567,755	5,201,565	51,366,190
18	Parsippany-Troy Hills	Morris	53,237,106	16,708,093	36,529,013
19	South Brunswick	Middlesex	49,584,855	21,218,440	28,366,415
20	Bridgewater Township	Somerset	49,326,035	17,577,047	31,748,988
TOP MUNICIPALITIES			2,144,417,279	806,887,932	1,337,529,347
NEW JERSEY			\$7,466,166,257	\$3,820,622,026	\$3,645,544,231
TOP AS % OF STATE			28.7%	21.1%	36.7%

Estimated Dollar Amount of Construction Authorized by Building Permits, January to July 2013

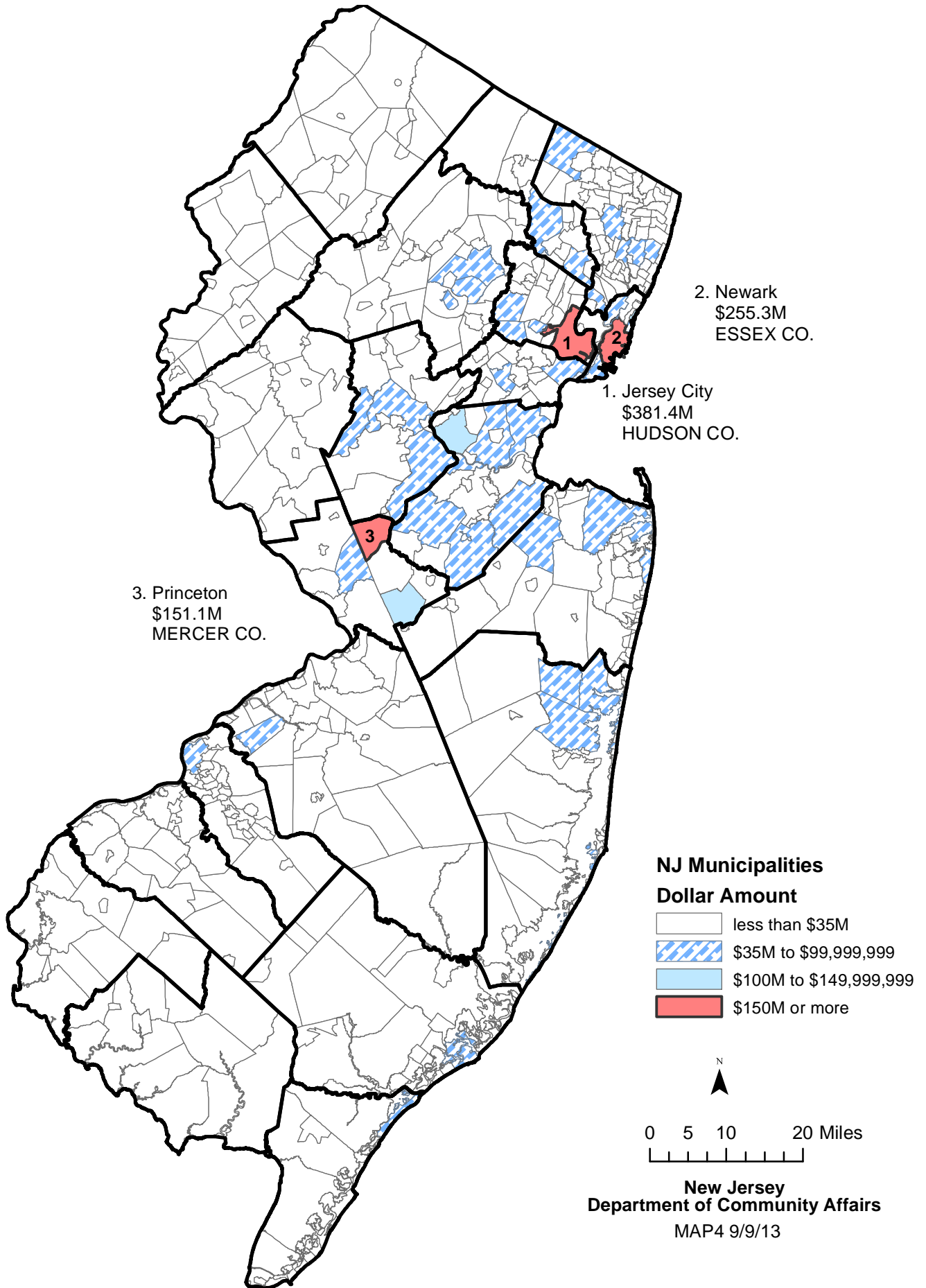


Table 12 USEGROUP 9/9/13

Dollar Amount of Construction Authorized by Building Permits by Use Group: New Jersey, July 2013						
Use Group	July			Year-to-Date		
	Permits	Construction Costs	Square Feet	Permits	Construction Costs	Square Feet
RESIDENTIAL	31,601	\$536,634,217	3,924,539	224,496	\$3,820,622,026	29,444,876
1 & 2 Family	29,889	431,480,826	2,896,683	210,266	2,881,253,597	21,023,102
Multifamily	1,712	105,153,391	1,027,856	14,230	939,368,429	8,421,774
NONRESIDENTIAL	6,895	\$453,776,278	1,983,599	48,108	3,645,544,231	14,097,165
Hotels, Motels, Guest Houses	90	6,045,929	60	685	68,935,561	271,587
Assembly	437	49,012,402	167,332	3,563	365,277,591	1,288,146
Business	2,260	179,479,469	580,928	16,156	1,458,685,129	3,106,128
Educational	443	70,397,951	54,332	1,758	382,935,774	670,524
Hazardous Use	7	2,875,230	0	64	27,846,704	88,703
Industrial	51	5,922,711	11,757	411	87,504,073	225,972
Institutional	85	35,843,514	152,016	719	131,980,237	415,191
Retail	358	24,982,900	15,600	2,768	249,321,950	999,351
Storage	185	22,026,229	805,856	1,304	397,591,214	5,335,480
Signs, Fences, Miscellaneous	2,979	57,189,943	195,718	20,680	475,465,998	1,696,083
NEW JERSEY	38,496	\$990,410,495	5,908,138	272,604	\$7,466,166,257	43,542,041
NJ July 2012	34,346	\$1,061,652,940	5,768,815	233,921	\$6,549,856,703	35,765,287

Table 13 PARTIC 9/9/13

Dollar Amount of Construction Authorized by Building Permits: New Jersey, July 2013					
Month	Number of Municipalities Reporting	Total	New Construction	Additions	Alterations
JANUARY	564	\$1,042,182,007	\$440,469,246	\$88,241,697	\$513,471,064
FEBRUARY	561	946,649,366	345,084,032	91,815,888	509,749,446
MARCH	561	882,104,045	283,201,167	62,572,392	536,330,486
APRIL	561	1,135,470,582	416,523,076	91,059,236	627,888,270
MAY	560	1,298,889,295	548,123,779	135,094,004	615,671,512
JUNE	558	1,170,460,467	441,924,601	106,207,657	622,328,209
JULY	526	990,410,495	325,001,788	94,925,006	570,483,701
AUGUST					
SEPTEMBER					
OCTOBER					
NOVEMBER					
DECEMBER					
TOTAL		\$7,466,166,257	\$2,800,327,689	\$669,915,880	\$3,995,922,688
		\$6,549,856,703	\$2,083,969,325	\$686,144,446	\$3,779,742,932
NJ July 2012					

NOTE:

Users of the monthly *CONSTRUCTION REPORTER* may notice that year-to-date figures in a particular issue may not be obtained by merely summing the monthly totals that appear in previous issues. This is because the construction data compiled by the New Jersey Department of Community Affairs are continuously updated. Monthly construction reports submitted too late to make the January issue of the *CONSTRUCTION REPORTER*, for example, are included in the year-to-date totals that appear in the February issue.

MUNICIPAL SUMMARY DATA, July 2013

AREA NAME	AUTHORIZED HOUSING UNITS	AUTHORIZED HOUSING UNITS (CENSUS DEFINITIONS)	HOUSING UNITS CERTIFIED	OFFICE SPACE AUTHORIZED BY BUILDING PERMITS	RETAIL SPACE AUTHORIZED BY BUILDING PERMITS	RESIDENTIAL (\$ AMOUNT)	NONRESIDENTIAL (\$ AMOUNT)
Atlantic County	25	37	42	5,964	0	9,783,085	5,832,915
Bergen County	127	281	76	13,160	0	75,190,338	61,531,890
Burlington County	59	75	40	218,425	0	18,644,101	17,361,401
Camden County	23	86	51	0	0	12,975,709	21,261,323
Cape May County	39	38	68	0	0	14,810,993	2,733,405
Cumberland County	8	23	10	1,444	0	2,599,438	4,925,417
Essex County	93	137	22	45,987	6,800	47,784,971	23,472,797
Gloucester County	59	65	39	1,892	0	12,354,209	9,419,827
Hudson County	52	193	79	0	0	33,391,030	47,739,051
Hunterdon County	5	18	4	0	4,800	6,996,957	6,101,580
Mercer County	8	44	136	3,364	0	14,443,343	22,102,651
Middlesex County	136	170	54	80,598	0	41,258,195	64,441,319
Monmouth County	102	213	96	122,702	0	67,552,784	24,347,421
Morris County	113	336	31	20,486	0	43,812,119	24,030,547
Ocean County	220	179	122	43,729	4,000	60,770,772	14,912,835
Passaic County	22	66	21	968	0	12,930,476	13,576,769
Salem County	6	6	3	14,300	0	1,256,689	4,430,174
Somerset County	34	78	19	1,344	0	25,844,712	24,343,839
Sussex County	3	28	5	4,048	0	5,330,782	6,006,945
Union County	95	160	64	1,477	0	25,694,408	23,777,516
Warren County	10	28	7	1,040	0	3,104,295	2,450,934
State Buildings	0		0	0	0	104,811	28,975,722
New Jersey	1,239	2,261	989	580,928	15,600	536,634,217	453,776,278

NEW JERSEY 2012	15,270	17,939	11,118	7,395,704	2,088,658	\$5,349,696,724	\$5,592,013,272
NEW JERSEY 2011	11,882	12,952	10,352	4,915,544	1,680,445	4,832,350,928	6,107,458,821
NEW JERSEY 2010	11,885	13,535	11,625	5,496,579	2,192,231	4,879,205,601	4,889,436,742
NEW JERSEY 2009	11,145	10,827	14,460	4,253,888	2,248,935	4,506,768,272	5,010,957,124
NEW JERSEY 2008	16,338	18,369	18,699	7,962,998	5,557,101	5,915,342,801	8,029,191,777
NEW JERSEY 2007	25,948	25,389	23,138	9,569,501	5,423,889	8,047,734,107	7,308,838,713
NEW JERSEY 2006	32,050	34,323	28,564	11,113,555	5,186,662	8,320,885,749	7,354,222,206
NEW JERSEY 2005	39,688	38,375	31,047	11,038,132	5,965,258	9,127,194,950	6,270,312,197
NEW JERSEY 2004	39,254	35,936	27,950	12,219,068	4,961,257	7,972,659,530	6,301,672,320
NEW JERSEY 2003	35,171	32,984	26,932	9,744,146	6,038,428	6,674,318,674	5,474,429,133
NEW JERSEY 2002	34,589	30,411	29,174	9,261,054	7,560,913	6,210,486,721	5,869,455,378
NEW JERSEY 2001	35,680	28,267	30,054	19,134,533	7,244,833	5,756,546,492	6,250,910,138
NEW JERSEY 2000	38,065	34,585	29,705	15,531,039	6,063,412	5,575,603,576	5,812,079,758
NEW JERSEY 1999	37,536	31,976	28,109	13,237,891	6,226,471	5,377,163,097	5,207,004,433
NEW JERSEY 1998	35,676	31,345	28,008	12,703,824	7,921,892	4,812,845,052	4,583,910,465
NEW JERSEY 1997	30,017	28,018	34,670	10,490,171	5,688,955	4,083,041,927	4,263,491,187

Atlantic County							
Absecon City	0	0	1	0	0	147,945	182,050
Atlantic City	1	3 *	5	4,524	0	898,715	2,901,161
Brigantine City	1	1	0	0	0	939,782	40,999
Buena Borough	No report	0	No report	No report	No report	No report	No report
Buena Vista Township	0	0	1	0	0	56,295	78,150
Corbin City	0	0	1	0	0	48,376	890
Egg Harbor City	2	2	2	0	0	163,241	320,903
Egg Harbor Township	7	4	5	1,440	0	1,426,817	346,781
Estell Manor City	0	0	1	0	0	44,855	0
Folsom Borough	0	0	0	0	0	48,244	0
Galloway Township	0	0	2	0	0	866,085	162,180
Hamilton Township	2	0	6	0	0	635,316	315,504
Hammonton Township	1	1	2	0	0	376,107	973,857
Linwood City	No report	1 *	No report	No report	No report	No report	No report

MUNICIPAL SUMMARY DATA, July 2013

AREA NAME	AUTHORIZED	AUTHORIZED	HOUSING	OFFICE SPACE	RETAIL SPACE	RESI-	NONRESI-
	HOUSING	HOUSING UNITS		AUTHORIZED	AUTHORIZED		
	UNITS	(CENSUS	UNITS	BY BUILDING	BY BUILDING	(\$ AMOUNT)	(\$ AMOUNT)
		DEFINITIONS)	CERTIFIED	PERMITS	PERMITS		
Longport City	0	0	4	0	0	477,850	1,200
Margate City	7	6	10	0	0	1,858,846	61,650
Mullica City	1	2 *	1	0	0	254,483	138,965
Northfield City	0	1 *	0	0	0	172,211	142,605
Pleasantville City	1	14 *	0	0	0	110,456	109,170
Port Republic City	No report	0	No report	No report	No report	No report	No report
Somers Point City	2	2 *	1	0	0	613,919	18,350
Ventnor City	0	0 *	0	0	0	642,542	0
Weymouth Township	0	0 *	0	0	0	1,000	38,500
Bergen County							
Allendale Borough	0	1 *	1	0	0	2,710,920	331,401
Alpine Borough	0	1 *	0	0	0	312,947	230,705
Bergenfield Borough	1	0	0	0	0	816,283	163,296
Bogota Borough	0	1 *	0	0	0	97,429	27,100
Carlstadt Borough	1	3 *	0	0	0	483,961	500,050
Cliffside Park Borough	25	26	1	0	0	4,541,740	843,900
Closter Borough	2	2	0	0	0	1,556,492	220,550
Cresskill Borough	2	6 *	1	0	0	1,610,923	156,500
Demarest Borough	1	2 *	0	0	0	670,149	17,650
Dumont Borough	0	0 *	0	0	0	391,350	1
Elmwood Park Borough	1	7 *	0	0	0	398,497	1,171,200
East Rutherford Borough	0	50 *	0	1,404	0	3,655,168	2,537,017
Edgewater Borough	2	2	2	0	0	704,743	582,729
Emerson Borough	0	11 *	0	0	0	276,165	228,681
Englewood City	0	7 *	0	0	0	1,507,493	17,822,366
Englewood Cliffs Borough	0	1 *	2	0	0	223,270	551,600
Fair Lawn Borough	0	1 *	0	0	0	1,047,663	792,831
Fairview Borough	0	12 *	2	1,370	0	116,149	127,275
Fort Lee Borough	6	6	2	0	0	4,473,830	1,957,014
Franklin Lakes Borough	1	1	1	3,419	0	655,422	947,063
Garfield City	12	12	0	0	0	1,617,176	1,513,080
Glen Rock Borough	No report	3 *	No report	No report	No report	No report	No report
Hackensack City	22	22	40	6,600	0	2,153,936	5,691,239
Harrington Park Borough	0	2 *	0	0	0	203,979	0
Hasbrouck Heights Borough	0	0 *	0	0	0	10,600	0
Haworth Borough	0	0	0	0	0	92,046	762,000
Hillsdale Borough	0	0 *	0	0	0	749,251	656,210
Ho-Ho-Kus Borough	0	1 *	0	0	0	382,880	22,750
Leonia Borough	0	1 *	0	0	0	491,810	132,397
Little Ferry Borough	1	0	0	0	0	552,350	69,740
Lodi Borough	0	0	0	0	0	298,675	612,500
Lyndhurst Township	3	3	0	0	0	1,941,073	368,877
Mahwah Township	1	1	0	0	0	1,923,034	669,401
Maywood Borough	0	0	0	0	0	188,804	284,904
Midland Park Borough	0	0	0	0	0	298,065	54,626
Montvale Borough	13	13	1	0	0	3,164,462	2,169,907
Moonachie Borough	1	1	0	0	0	210,793	1,899,553
New Milford Borough	5	2	0	0	0	1,621,184	18,200
North Arlington Borough	0	0	0	0	0	571,087	75,640
Northvale Borough	0	2 *	0	0	0	127,793	1,119,745
Norwood Borough	1	2 *	0	0	0	1,038,156	0
Oakland Borough	0	0	0	0	0	473,402	174,200
Old Tappan Borough	1	1	0	0	0	952,843	33,850
Oradell Borough	0	2 *	0	0	0	712,347	164,583
Palisades Park Borough	5	6	8	0	0	1,533,204	190,610
Paramus Borough	6	6	0	0	0	4,801,107	4,758,259

MUNICIPAL SUMMARY DATA, July 2013

AREA NAME	AUTHORIZED HOUSING UNITS	AUTHORIZED HOUSING UNITS (CENSUS DEFINITIONS)	HOUSING UNITS CERTIFIED	OFFICE SPACE AUTHORIZED BY BUILDING PERMITS	RETAIL SPACE AUTHORIZED BY BUILDING PERMITS	RESIDENTIAL (\$ AMOUNT)	NONRESIDENTIAL (\$ AMOUNT)
Park Ridge Borough	0	7 *	0	0	0	218,002	88,228
Ramsey Borough	1	1	4	0	0	1,474,100	912,838
Ridgefield Borough	0	2 *	0	0	0	180,569	119,071
Ridgefield Park Village	0	0 *	0	0	0	214,558	44,900
Ridgewood Village	3	4 *	1	0	0	3,036,942	443,877
River Edge Borough	0	1 *	0	0	0	1,160,111	1,430,600
River Vale Township	0	0	0	0	0	606,054	600,455
Rochelle Park Township	0	0	0	0	0	262,694	337,000
Rockleigh Borough	0	0 *	0	0	0	9,884	4,500
Rutherford Borough	0	0	0	0	0	881,739	596,858
Saddle Brook Township	0	8 *	0	0	0	223,521	1,200
Saddle River Borough	0	0	0	0	0	2,672,641	317,343
South Hackensack Twp	0	0	0	0	0	33,514	56,643
Teaneck Township	5	2	0	0	0	2,055,606	990,995
Tenafly Borough	3	1	5	0	0	3,673,772	232,447
Teterboro Borough	0	0	0	0	0	0	147,900
Upper Saddle River Borough	1	1	0	0	0	1,639,088	219,091
Waldwick Borough	0	2 *	0	0	0	322,335	373,399
Wallington Borough	0	4 *	0	367	0	97,985	311,450
Washington Township	0	2 *	0	0	0	398,913	101,653
Westwood Borough	0	0	0	0	0	750,435	2,555,380
Woodcliff Lake Borough	1	1	2	0	0	442,919	493,500
Wood-Ridge Borough	0	23 *	1	0	0	280,111	48,913
Wyckoff Township	0	2 *	2	0	0	2,194,194	452,449
Burlington County							
Bass River Township	0	0 *	0	0	0	17,100	321,375
Beverly City	0	0 *	0	0	0	23,373	6,200
Bordentown City	0	0	0	0	0	41,300	268,439
Bordentown Township	5	2 *	3	0	0	1,232,318	194,565
Burlington City	0	0	0	0	0	153,381	92,944
Burlington Township	0	8 *	1	0	0	760,390	1,409,603
Chesterfield Township	1	1	2	0	0	429,769	39,600
Cinnaminson Township	0	19 *	13	0	0	548,458	83,971
Delanco Township	1	1	1	0	0	295,574	640,045
Delran Township	0	1 *	7	0	0	218,083	191,969
Eastampton Township	0	0	0	0	0	134,073	2,224
Edgewater Park Township	No report	0 *	No report	No report	No report	No report	No report
Evesham Township	12	13 *	1	0	0	2,141,399	2,327,887
Fieldsboro Borough	0	0	0	0	0	4,590	0
Florence Township	4	4	0	218,425	0	822,420	4,685,881
Hainesport Township	0	0	0	0	0	174,231	93,425
Lumberton Township	0	0	0	0	0	358,820	176,758
Mansfield Township	2	2	0	0	0	468,301	51,047
Maple Shade Borough	0	6 *	1	0	0	177,816	328,482
Medford Township	6	6	4	0	0	1,993,353	74,840
Medford Lakes Borough	0	0 *	0	0	0	96,517	0
Moorestown Township	2	2	1	0	0	2,006,264	1,955,443
Mount Holly Township	25	0 *	0	0	0	2,470,074	1,332,208
Mount Laurel Township	0	0	6	0	0	1,238,619	1,487,670
New Hanover Township	0	0	0	0	0	15,151	15,785
North Hanover Township	0	2 *	0	0	0	136,054	24,197
Palmyra Borough	0	1 *	0	0	0	86,007	0
Pemberton Borough	No report	0	No report	No report	No report	No report	No report
Pemberton Township	1	1	0	0	0	559,688	601,561
Riverside Township	0	0 *	0	0	0	73,793	600
Riverton Borough	0	1 *	0	0	0	30,500	0

MUNICIPAL SUMMARY DATA, July 2013

AREA NAME	AUTHORIZED HOUSING UNITS	AUTHORIZED HOUSING UNITS (CENSUS DEFINITIONS)	HOUSING UNITS CERTIFIED	OFFICE SPACE AUTHORIZED BY BUILDING PERMITS	RETAIL SPACE AUTHORIZED BY BUILDING PERMITS	RESIDENTIAL (\$ AMOUNT)	NONRESIDENTIAL (\$ AMOUNT)
Shamong Township	0	1 *	0	0	0	403,004	0
Southampton Township	0	2 *	0	0	0	345,309	74,441
Springfield Township	0	1 *	0	0	0	86,160	493,400
Tabernacle Township	0	0 *	0	0	0	176,465	100,345
Washington Township	0	0	0	0	0	6,300	5,202
Westampton Township	0	0	0	0	0	166,025	68,227
Willingboro Township	0	0	0	0	0	738,522	199,067
Woodland Township	0	1 *	0	0	0	14,900	14,000
Wrightstown Borough	No report	0 *	No report	No report	No report	No report	No report
Camden County							
Audubon Borough	No report	0 *	No report	No report	No report	No report	No report
Audubon Park Borough	No report	0 *	0	No report	No report	No report	No report
Barrington Borough	0	0	0	0	0	27,878	0
Bellmawr Borough	0	1	0	0	0	249,544	85,180
Berlin Borough	0	0	0	0	0	390,806	110,960
Berlin Township	4	4	4	0	0	475,250	36,450
Brooklawn Borough	0	0	0	0	0	9,540	44,000
Camden City	0	15	1	0	0	1,750,704	9,024,137
Cherry Hill Township	0	0	2	0	0	2,547,193	3,761,281
Chesilhurst Borough	0	0	1	0	0	21,114	0
Clementon Borough	0	1 *	0	0	0	91,389	47,792
Collingswood Borough	0	0 *	0	0	0	353,122	9,848
Gibbsboro Borough	0	0 *	0	0	0	89,165	0
Gloucester City	0	0 *	0	0	0	108,813	2,286,325
Gloucester Township	No report	0 *	No report	No report	No report	No report	No report
Haddon Township	0	1 *	1	0	0	279,653	47,856
Haddonfield Borough	0	2 *	0	0	0	881,753	42,745
Haddon Heights Borough	0	8 *	0	0	0	271,322	71,649
Hi-nella Borough	0	0	0	0	0	22,090	0
Laurel Springs Borough	0	0 *	0	0	0	47,234	79,970
Lawnside Borough	1	1	0	0	0	62,969	14,850
Lindenwold Borough	0	12 *	0	0	0	96,899	22,846
Magnolia Borough	0	1 *	0	0	0	70,157	12,585
Merchantville Borough	No report	0 *	No report	No report	No report	No report	No report
Mount Ephraim Borough	0	0	0	0	0	251,988	6,500
Oaklyn Borough	0	0 *	0	0	0	144,159	0
Pennsauken Township	0	0	0	0	0	509,485	1,091,667
Pine Hill Borough	0	20 *	0	0	0	233,898	231,475
Pine Valley Borough	No report	0 *	No report	No report	No report	No report	No report
Runnemede Borough	0	0	0	0	0	127,081	2,146
Somerdale Borough	11	11	2	0	0	1,144,628	67,300
Stratford Borough	0	0	0	0	0	88,661	19,490
Tavistock Borough	0	0 0	0	0	0	0	0
Voorhees Township	5	5	36	0	0	1,329,696	3,355,291
Waterford Township	2	4 *	4	0	0	431,231	413,246
Winslow Township	0	0	0	0	0	868,287	375,734
Woodlynne Borough	No report	0	No report	No report	No report	No report	No report
Cape May County							
Avalon Borough	4	4	9	0	0	2,154,137	112,970
Cape May City	0	1 *	1	0	0	498,488	11,050
Cape May Point Borough	0	0	0	0	0	48,673	0
Dennis Township	1	1 *	0	0	0	84,666	181,496
Lower Township	2	1 *	2	0	0	1,208,618	276,769
Middle Township	5	5	8	0	0	1,035,761	173,780
North Wildwood City	0	0	2	0	0	382,546	345,850
Ocean City	25	22	22	0	0	7,225,971	737,175

MUNICIPAL SUMMARY DATA, July 2013

AREA NAME	AUTHORIZED HOUSING UNITS	AUTHORIZED HOUSING UNITS (CENSUS DEFINITIONS)	HOUSING UNITS CERTIFIED	OFFICE SPACE AUTHORIZED BY BUILDING PERMITS	RETAIL SPACE AUTHORIZED BY BUILDING PERMITS	RESIDENTIAL (\$ AMOUNT)	NONRESIDENTIAL (\$ AMOUNT)
Sea Isle City	0	0	18	0	0	107,013	148,550
Stone Harbor Borough	1	1	5	0	0	938,107	98,646
Upper Township	0	3 *	0	0	0	347,865	312,871
West Cape May Borough	1	0 *	0	0	0	157,760	0
West Wildwood Borough	0	0 *	0	0	0	65,870	3,900
Wildwood City	0	0 *	1	0	0	111,354	180,948
Wildwood Crest Borough	0	0	0	0	0	363,499	68,950
Woodbine Borough	0	0	0	0	0	80,665	80,450
Cumberland County							
Bridgeton City	0	2 *	0	0	0	117,383	1,450,304
Commercial Township	1	2 *	0	0	0	125,107	111,100
Deerfield Township	0	1 *	0	0	0	60,054	17,500
Downe Township	0	0	0	0	0	162,504	12,400
Fairfield Township	0	0	0	0	0	0	6,450
Greenwich Township	0	0 *	0	0	0	7,450	0
Hopewell Township	0	1 *	0	0	0	55,086	190,925
Lawrence Township	0	0	0	0	0	286,980	0
Maurice River Township	0	2 *	0	0	0	29,907	32,100
Millville City	2	3 *	1	0	0	489,706	227,778
Shiloh Borough	0	1 *	0	0	0	25,760	24,000
Stow Creek Township	0	0	0	0	0	9,950	108,000
Upper Deerfield Township	0	2 *	1	0	0	153,472	1,321,976
Vineland City	5	9 *	8	1,444	0	1,076,079	1,422,884
Essex County							
Belleville Town	1	1	2	0	6,800	1,067,830	206,350
Bloomfield Township	0	1 *	0	0	0	1,019,265	132,250
Caldwell Township	0	0 *	0	0	0	193,882	233,340
Cedar Grove Township	0	2 *	0	0	0	387,735	260,254
East Orange City	0	6	3	0	0	937,025	78,399
Essex Fells Township	0	1 *	1	0	0	500,413	0
Fairfield Township	0	0	0	0	0	395,154	425,470
Glen Ridge Borough	0	1 *	0	0	0	535,492	0
Irvington Township	0	0	0	0	0	387,686	272,833
Livingston Township	4	4	0	34,103	0	5,017,385	1,646,461
Maplewood Township	0	24 *	1	0	0	712,889	108,980
Millburn Township	6	7 *	2	0	0	7,792,941	3,651,425
Montclair Township	1	0	0	0	0	3,313,780	1,013,225
Newark City	62	0	7	11,884	0	14,793,162	11,476,005
North Caldwell Borough	19	9 *	3	0	0	5,928,622	293,929
Nutley Township	No report	2 *	No report	No report	No report	No report	No report
City of Orange Township	No report	56 *	No report	No report	No report	No report	No report
Roseland Borough	0	1 *	0	0	0	76,285	129,245
South Orange Village	0	0	0	0	0	1,779,309	289,552
Verona Township	0	20 *	0	0	0	571,352	108,650
West Caldwell Township	0	2 *	1	0	0	929,030	921,961
West Orange Township	0	0	2	0	0	1,445,734	2,224,468
Gloucester County							
Clayton Borough	5	4	1	0	0	511,465	35,093
Deptford Township	2	3	4	0	0	721,444	583,713
East Greenwich Township	4	4	2	0	0	877,865	27,725
Elk Township	0	0	0	392	0	90,695	1,260,995
Franklin Township	No report	2 *	No report	No report	No report	No report	No report
Glassboro Borough	1	1	4	0	0	430,653	534,655
Greenwich Township	0	2 *	0	0	0	85,984	10,099
Harrison Township	6	6	13	0	0	2,097,213	325,300
Logan Township	0	0	0	1,500	0	165,472	4,639,220

MUNICIPAL SUMMARY DATA, July 2013

AREA NAME	AUTHORIZED HOUSING UNITS	AUTHORIZED HOUSING UNITS (CENSUS DEFINITIONS)	HOUSING UNITS CERTIFIED	OFFICE SPACE AUTHORIZED BY BUILDING PERMITS	RETAIL SPACE AUTHORIZED BY BUILDING PERMITS	RESIDENTIAL (\$ AMOUNT)	NONRESIDENTIAL (\$ AMOUNT)
Mantua Township	0	0 *	0	0	0	668,838	20,849
Monroe Township	35	35	9	0	0	4,076,798	275,242
National Park Borough	No report	0	No report	No report	No report	No report	No report
Newfield Borough	0	0 *	0	0	0	28,150	2,000
Paulsboro Borough	0	0 *	0	0	0	30,000	48,000
Pitman Borough	0	1 *	0	0	0	160,607	12,200
South Harrison Township	0	1	0	0	0	230,188	0
Swedesborough Borough	1	1	0	0	0	135,252	12,833
Washington Township	0	0	0	0	0	861,651	186,374
Wenonah Borough	0	0	0	0	0	36,120	1,100
West Deptford Township	0	0	0	0	0	285,403	772,827
Westville Borough	0	0	0	0	0	19,494	20,686
Woodbury City	0	0	0	0	0	76,816	200,569
Woodbury Heights Borough	0	0	0	0	0	43,422	20,700
Woolwich Township	5	5	6	0	0	720,679	429,647
Hudson County							
Bayonne City	2	26 *	0	0	0	1,492,804	322,588
East Newark Borough	0	0	0	0	0	30,000	3,000
Guttenberg Town	0	0	0	0	0	156,083	20,100
Harrison Town	1	2	2	0	0	308,470	1,032,149
Hoboken City	8	8	11	0	0	5,570,158	744,978
Jersey City	11	8	20	0	0	5,809,110	11,633,338
Kearny Town	No report	0 *	No report	No report	No report	No report	No report
North Bergen Township	0	0 *	0	0	0	646,364	892,105
Secaucus Town	0	98 *	2	0	0	562,659	30,795,814
Union City	2	0	1	0	0	492,619	1,330,609
Weehawken Township	0	33 *	0	0	0	17,698,557	877,885
West New York Town	28	18 *	43	0	0	624,206	86,485
Hunterdon County							
Alexandria Township	0	0 *	0	0	0	540,079	72,982
Bethlehem Township	0	0	0	0	0	38,795	187,650
Bloomsbury Borough	0	0	0	0	0	11,000	7,250
Califon Borough	0	0	0	0	0	160,056	0
Clinton Town	0	0 *	0	0	0	79,756	11,000
Clinton Township	0	0	0	0	4,800	744,002	573,245
Delaware Township	0	1 *	0	0	0	227,632	144,921
East Amwell Township	0	1 *	0	0	0	9,200	27,500
Flemington Borough	0	11 *	0	0	0	167,425	296,830
Franklin Township	1	1 *	0	0	0	468,844	124,550
Frenchtown Borough	0	0	1	0	0	103,608	1,200
Glen Gardner Borough	0	0 *	0	0	0	0	16,590
Hampton Borough	0	0	0	0	0	1,450	7,100
High Bridge Borough	0	0 *	0	0	0	70,130	12,342
Holland Township	0	0	0	0	0	112,407	350,923
Kingwood Township	2	2	0	0	0	607,553	82,599
Lambertville City	0	0	0	0	0	185,657	68,151
Lebanon Borough	0	0	0	0	0	4,800	27,200
Lebanon Township	0	0	0	0	0	183,241	79,402
Milford Borough	0	0	0	0	0	89,592	168,150
Raritan Township	2	1	2	0	0	1,710,070	1,470,006
Readington Township	0	1	1	0	0	819,868	439,475
Stockton Borough	0	0 *	0	0	0	850	0
Tewksbury Township	0	0	0	0	0	375,448	76,001
Union Township	0	0	0	0	0	183,449	1,556,656
West Amwell Township	0	0	0	0	0	102,045	299,857
Mercer County							

MUNICIPAL SUMMARY DATA, July 2013

AREA NAME	AUTHORIZED HOUSING UNITS	AUTHORIZED HOUSING UNITS (CENSUS DEFINITIONS)	HOUSING UNITS CERTIFIED	OFFICE SPACE AUTHORIZED BY BUILDING PERMITS	RETAIL SPACE AUTHORIZED BY BUILDING PERMITS	RESIDENTIAL (\$ AMOUNT)	NONRESIDENTIAL (\$ AMOUNT)
	UNITS						
East Windsor Township	1	1	3	0	0	705,114	1,711,763
Ewing Township	0	14	0	0	0	854,798	1,353,996
Hamilton Township	No report	2 *	No report	No report	No report	No report	No report
Hightstown Borough	No report	1 *	No report	No report	No report	No report	No report
Hopewell Borough	0	0	0	0	0	424,250	9,844
Hopewell Township	1	1	0	0	0	1,167,476	2,231,557
Lawrence Township	1	1	0	0	0	1,230,968	7,398,337
Pennington Borough	0	0	0	3,364	0	201,123	433,778
Princeton Borough	See Princeton (1114)						
Princeton (Consolidated 1114)	1	3	0	0	0	6,208,736	3,911,540
Trenton City	No report	3	No report	No report	No report	No report	No report
Robbinsville Township	4	0 *	3	0	0	1,530,334	1,087,547
West Windsor Township	0	18 *	130	0	0	2,120,544	3,964,289
Middlesex County							
Carteret Borough	0	25 *	0	0	0	6,212,386	665,002
Cranbury Township	0	0	0	0	0	131,662	651,790
Dunellen Borough	0	2 *	0	0	0	114,450	7,975
East Brunswick Township	3	3	0	0	0	1,990,471	2,737,558
Edison Township	3	2	0	0	0	3,315,218	2,572,156
Helmetta Borough	0	0	0	0	0	17,126	0
Highland Park Borough	0	7 *	0	0	0	0	530,933
Jamesburg Borough	0	0	0	0	0	82,557	45,900
Old Bridge Township	1	2	2	0	0	2,196,717	6,506,870
Metuchen Borough	2	2	3	0	0	3,061,358	1,096,765
Middlesex Borough	0	0 *	0	0	0	316,308	270,800
Milltown Borough	0	0 *	0	0	0	182,171	0
Monroe Township	48	48	27	0	0	8,981,913	1,176,710
New Brunswick City	59	59	0	30,509	0	2,060,720	16,234,158
North Brunswick Township	3	3	7	5,740	0	1,396,408	1,667,048
Perth Amboy City	0	0	0	0	0	486,719	4,608,353
Piscataway Township	0	0	2	38,124	0	769,273	7,437,304
Plainsboro Township	0	0	1	0	0	697,388	356,181
Sayreville Borough	1	1	1	0	0	1,877,251	762,192
South Amboy City	0	0	0	0	0	309,922	42,952
South Brunswick Township	13	13	4	6,225	0	3,368,371	4,178,058
South Plainfield Borough	0	2 *	1	0	0	103,906	1,302,958
South River Borough	0	0	1	0	0	275,798	330,069
Spotswood Borough	0	1 *	0	0	0	176,459	42,213
Woodbridge Township	3	0	5	0	0	3,133,643	11,217,374
Monmouth County							
Allenhurst Borough	0	0	0	0	0	27,500	0
Allentown Borough	0	0	0	0	0	95,588	9,750
Asbury Park City	0	1 *	0	0	0	239,643	812,328
Atlantic Highlands Borough	0	0	0	0	0	185,709	1,000
Avon-by-the-Sea Borough	2	2	3	0	0	953,885	0
Belmar Borough	3	3	2	0	0	1,432,737	117,602
Bradley Beach Borough	0	1 *	0	0	0	373,965	0
Brielle Borough	1	1	2	0	0	475,974	246,056
Colts Neck Township	0	0	0	0	0	1,261,340	56,602
Deal Borough	No report	1 *	No report	No report	No report	No report	No report
Eatontown Borough	1	1	0	0	0	594,527	895,220
Englishtown Borough	0	0	0	0	0	37,045	599,680
Fair Haven Borough	2	2	1	0	0	996,478	27,022
Farmingdale Borough	0	0	0	0	0	36,427	119,902
Freehold Borough	0	5 *	2	0	0	168,007	990,093
Freehold Township	0	0 *	0	0	0	1,237,840	1,496,657

MUNICIPAL SUMMARY DATA, July 2013

AREA NAME	AUTHORIZED HOUSING UNITS	AUTHORIZED HOUSING UNITS (CENSUS DEFINITIONS)	HOUSING UNITS CERTIFIED	OFFICE SPACE AUTHORIZED BY BUILDING PERMITS	RETAIL SPACE AUTHORIZED BY BUILDING PERMITS	RESIDENTIAL (\$ AMOUNT)	NONRESIDENTIAL (\$ AMOUNT)
Highlands Borough	2	0	1	0	0	1,094,480	68,065
Holmdel Township	No report	1 *	No report	No report	No report	No report	No report
Howell Township	20	20	19	46,509	0	3,938,928	771,783
Interlaken Borough	0	0	0	0	0	17,225	0
Keansburg Borough	1	2	2	0	0	820,146	246,325
Keyport Borough	0	1 *	0	0	0	145,001	101,224
Little Silver Borough	3	2 *	0	0	0	1,442,365	131,799
Loch Arbour Village	0	0	0	0	0	26,510	6,600
Long Branch City	1	1	4	4,830	0	4,014,812	1,585,375
Manalapan Township	8	9 *	13	0	0	2,916,366	542,374
Manasquan Borough	6	6	4	0	0	3,062,238	23,400
Marlboro Township	4	87	23	57,179	0	5,733,033	3,276,535
Matawan Borough	0	0	0	0	0	403,150	158,833
Aberdeen Township	0	4 *	0	0	0	45,865	42,300
Middletown Township	12	12	5	0	0	5,811,484	5,442,485
Millstone Township	0	1 *	1	0	0	326,856	323,004
Monmouth Beach Borough	No report	1 *	No report	No report	No report	No report	No report
Neptune Township	No report	0 *	No report	No report	No report	No report	No report
Neptune City Borough	0	0	0	0	0	235,910	23,525
Tinton Falls Borough	0	12 *	0	0	0	371,333	169,574
Ocean Township	2	3 *	0	0	0	1,267,767	1,480,529
Oceanport Borough	0	0	0	0	0	832,578	45,336
Hazlet Township	0	1 *	0	0	0	1,733,780	0
Red Bank Borough	2	1	0	0	0	674,361	730,090
Roosevelt Borough	0	0	0	0	0	85,898	7,600
Rumson Borough	1	1	2	0	0	2,252,902	749,395
Sea Bright Borough	No report	0 *	0	No report	No report	No report	No report
Sea Girt Borough	3	3	3	0	0	4,507,166	64,850
Shrewsbury Borough	7	6 *	6	0	0	964,700	50,000
Shrewsbury Township	0	0 *	0	0	0	18,349	0
Lake Como Borough	0	0 *	0	0	0	61,944	50,500
Spring Lake Borough	1	1	2	0	0	911,472	142,800
Spring Lake Heights Boro	0	0	0	0	0	187,395	44,799
Union Beach Borough	13	13	0	0	0	3,997,485	207,409
Upper Freehold Township	0	0	0	0	0	571,340	530,075
Wall Township	7	7	1	14,184	0	2,130,725	1,590,418
West Long Branch Borough	0	1 *	0	0	0	8,832,555	368,507
Morris County							
Boonton Town	1	1	0	0	0	720,304	90,599
Boonton Township	0	1 *	0	0	0	357,565	0
Butler Borough	3	3	0	0	0	718,747	201,700
Chatham Borough	2	2	1	0	0	2,020,049	75,700
Chatham Township	1	1	2	0	0	2,630,086	310,901
Chester Borough	0	11 *	0	0	0	210,100	5,525
Chester Township	0	0	0	0	0	591,810	351,412
Denville Township	No report	1 *	No report	No report	No report	No report	No report
Dover Town	0	0	0	0	0	264,713	1,263,629
East Hanover Township	2	1 *	0	20,353	0	737,012	2,894,894
Florham Park Borough	No report	4 *	No report	No report	No report	No report	No report
Hanover Township	65	17 *	3	0	0	4,278,026	867,312
Harding Township	0	0	0	0	0	280,855	135,150
Jefferson Township	1	0 *	0	0	0	1,158,074	420,270
Kinnelon Borough	0	2 *	0	0	0	321,957	9,900
Lincoln Park Borough	0	0	0	0	0	213,214	173,180
Madison Borough	1	1	2	0	0	2,523,249	2,235,638
Mendham Borough	0	1 *	0	0	0	119,605	78,646

MUNICIPAL SUMMARY DATA, July 2013

AREA NAME	AUTHORIZED HOUSING UNITS	AUTHORIZED HOUSING UNITS (CENSUS DEFINITIONS)	HOUSING UNITS CERTIFIED	OFFICE SPACE AUTHORIZED BY BUILDING PERMITS	RETAIL SPACE AUTHORIZED BY BUILDING PERMITS	RESIDENTIAL (\$ AMOUNT)	NONRESIDENTIAL (\$ AMOUNT)
Mendham Township	0	0	0	0	0	754,614	183,653
Mine Hill Township	0	0 *	0	0	0	115,596	0
Montville Township	2	2	4	0	0	3,444,168	1,299,189
Morris Township	9	3 *	0	0	0	3,655,466	704,200
Morris Plains Borough	6	6	0	0	0	895,168	0
Morristown Town	0	2 *	1	0	0	483,434	1,203,337
Mountain Lakes Borough	1	1	0	0	0	1,541,046	0
Mount Arlington Borough	0	7 *	1	0	0	94,396	1,200
Mount Olive Township	9	9	11	0	0	1,923,125	5,227,090
Netcong Borough	0	1 *	0	0	0	48,050	13,000
Parsippany-Troy Hills Twp	4	2 *	1	133	0	2,933,531	2,201,375
Long Hill Township	0	0	0	0	0	552,681	76,675
Pequanock Township	2	3 *	0	0	0	1,317,466	639,752
Randolph Township	0	0	1	0	0	928,347	712,650
Riverdale Borough	0	0	4	0	0	58,029	60,599
Rockaway Borough	0	0	0	0	0	166,788	49,701
Rockaway Township	1	1	0	0	0	834,858	1,374,490
Roxbury Township	0	3 *	0	0	0	792,339	322,709
Victory Gardens Borough	0	0	0	0	0	0	0
Washington Township	1	0	0	0	0	1,195,085	717,641
Wharton Borough	2	250	0	0	0	4,932,566	128,830
Ocean County							
Barneget Light Borough	1	1	1	0	0	454,350	0
Bay Head Borough	0	0	0	0	0	1,240,130	4,500
Beach Haven Borough	3	3	2	0	0	1,814,733	324,779
Beachwood Borough	2	2	0	0	0	364,289	25,012
Berkeley Township	2	9 *	5	0	0	1,922,825	7,951
Brick Township	9	4	0	0	0	4,840,799	1,481,958
Toms River Township	30	9 *	5	0	0	7,643,681	3,754,286
Eagleswood Township	0	1 *	0	0	0	31,770	35,050
Harvey Cedars Borough	0	0	1	0	0	52,175	0
Island Heights Borough	0	0	2	0	0	30,514	9,550
Jackson Township	1	1	4	0	0	2,001,542	992,114
Lacey Township	14	12	10	15,608	0	2,972,254	859,031
Lakehurst Borough	No report	0	No report	No report	No report	No report	No report
Lakewood Township	28	23	30	0	0	4,710,436	2,718,309
Lavallette Borough	4	4	3	0	0	1,528,764	23,850
Little Egg Harbor Township	14	7	6	4,000	0	2,678,103	421,200
Long Beach Township	16	16	10	0	0	6,995,319	1,500
Manchester Township	5	0 *	3	15,948	0	1,578,770	458,370
Mantoloking Borough	0	1 *	0	0	0	1,724,537	2,000
Ocean Township	8	2	5	0	0	1,516,609	4,400
Ocean Gate Borough	1	1	0	0	0	127,735	0
Pine Beach Borough	No report	1 *	No report	No report	No report	No report	No report
Plumsted Township	0	2 *	1	0	0	184,289	84,795
Point Pleasant Borough	35	35	1	0	0	5,558,026	136,044
Point Pleasant Beach Boro	2	2	0	0	0	1,752,016	71,554
Seaside Heights Borough	0	0 *	0	0	0	2,050	3,600
Seaside Park Borough	0	1 *	2	0	0	222,624	29,932
Ship Bottom Borough	5	4	4	1,490	4,000	1,395,233	538,340
South Toms River Borough	3	3	0	0	0	380,259	43,195
Stafford Township	22	20	19	0	0	4,906,317	1,063,409
Surf City Borough	1	1	3	0	0	624,720	0
Tuckerton Borough	0	0	0	0	0	0	393,492
Barneget Township	14	14	5	6,683	0	1,515,903	1,424,614
Passaic County							

MUNICIPAL SUMMARY DATA, July 2013

AREA NAME	AUTHORIZED HOUSING UNITS	AUTHORIZED HOUSING UNITS (CENSUS DEFINITIONS)	HOUSING UNITS CERTIFIED	OFFICE SPACE AUTHORIZED BY BUILDING PERMITS	RETAIL SPACE AUTHORIZED BY BUILDING PERMITS	RESIDENTIAL (\$ AMOUNT)	NONRESIDENTIAL (\$ AMOUNT)
Bloomington Borough	0	0	7	0	0	218,354	735,100
Clifton City	0	16 *	8	968	0	1,587,897	4,711,528
Haledon Borough	0	0	0	0	0	54,630	3,470
Hawthorne Borough	0	0	0	0	0	562,794	229,420
Little Falls Township	0	0	0	0	0	456,444	816,592
North Haledon Borough	0	0	0	0	0	491,782	3,000
Passaic City	2	2	0	0	0	1,007,590	2,498,467
Paterson City	No report	6 *	No report	No report	No report	No report	No report
Pompton Lakes Borough	0	1 *	0	0	0	259,104	124,020
Prospect Park Borough	No report	0 *	No report	No report	No report	No report	No report
Ringwood Borough	0	1 *	0	0	0	462,006	209,632
Totowa Borough	0	1 *	1	0	0	433,355	2,537,833
Wanaque Borough	14	14	0	0	0	1,550,209	204,600
Wayne Township	6	4	2	0	0	4,652,187	1,268,024
West Milford Township	0	2 *	2	0	0	967,400	152,138
Woodland Park Borough	0	19 *	1	0	0	226,724	82,945
Salem County							
Alloway Township	No report	1	No report	No report	No report	No report	No report
Elmer Borough	0	0	0	8,900	0	0	439,871
Elsinboro Township	0	0	0	0	0	0	26,000
Lower Alloways Creek Twp	1	1	0	0	0	120,037	117,000
Mannington Township	0	0 *	0	0	0	0	20,300
Oldmans Township	0	0	0	0	0	68,805	83,936
Penns Grove Borough	No report	0	No report	No report	No report	No report	No report
Pennsville Township	0	1 *	0	0	0	174,679	72,258
Pilesgrove Township	0	0	0	0	0	131,497	2,887,660
Pittsgrove Township	0	0	1	5,400	0	104,910	232,525
Quinton Township	0	0	0	0	0	45,735	0
Salem City	0	0	0	0	0	26,427	44,200
Carneys Point Township	4	2 *	2	0	0	312,794	74,349
Upper Pittsgrove Township	1	1	0	0	0	156,500	51,500
Woodstown Borough	0	0	0	0	0	115,305	380,575
Somerset County							
Bedminster Township	0	0	1	0	0	457,065	974,170
Bernards Township	1	1	0	0	0	3,538,212	345,731
Bernardsville Borough	0	0	1	0	0	1,010,933	314,635
Bound Brook Borough	No report	8 *	No report	No report	No report	No report	No report
Branchburg Township	0	0	0	0	0	815,156	2,698,625
Bridgewater Township	3	0 *	0	0	0	3,972,393	9,461,781
Far Hills Borough	0	0	0	0	0	151,295	0
Franklin Township	8	8	6	0	0	3,729,409	3,236,578
Green Brook Township	1	1	0	0	0	684,295	116,300
Hillsborough Township	6	6	4	0	0	3,071,230	1,708,738
Manville Borough	2	2	1	0	0	586,823	75,250
Millstone Borough	0	0	0	0	0	2,000	750
Montgomery Township	11	11	2	0	0	3,400,354	636,726
North Plainfield Borough	0	0	0	1,344	0	259,055	306,950
Peapack-Gladstone Borough	0	1	0	0	0	278,321	98,475
Raritan Borough	0	30 *	0	0	0	263,471	26,947
Rocky Hill Borough	0	0 *	0	0	0	2,500	81,233
Somerville Borough	0	0	0	0	0	393,053	787,230
South Bound Brook Boro	0	8 *	0	0	0	46,509	600
Warren Township	2	2	4	0	0	2,900,313	1,554,100
Watchung Borough	0	0	0	0	0	282,325	1,919,020
Sussex County							
Andover Borough	No report	0	No report	No report	No report	No report	No report

MUNICIPAL SUMMARY DATA, July 2013

AREA NAME	AUTHORIZED HOUSING UNITS	AUTHORIZED HOUSING UNITS (CENSUS DEFINITIONS)	HOUSING UNITS CERTIFIED	OFFICE SPACE AUTHORIZED BY BUILDING PERMITS	RETAIL SPACE AUTHORIZED BY BUILDING PERMITS	RESIDENTIAL (\$ AMOUNT)	NONRESIDENTIAL (\$ AMOUNT)
Andover Township	0	0	0	48	0	132,790	69,350
Branchville Borough	0	0	0	0	0	2,500	995
Byram Township	0	0 *	0	0	0	171,579	31,134
Frankford Township	0	2 *	1	0	0	491,044	84,880
Franklin Borough	0	0	0	0	0	60,904	88,294
Fredon Township	0	0	0	0	0	159,080	101,445
Green Township	0	2 *	0	0	0	39,626	72,800
Hamburg Borough	0	0	0	0	0	94,083	13,140
Hampton Township	0	0	0	0	0	300,068	47,881
Hardyston Township	0	0	0	0	0	149,479	817,250
Hopatcong Borough	0	2 *	1	0	0	410,502	454,915
Lafayette Township	0	0	0	0	0	309,076	15,500
Montague Township	2	2	0	0	0	291,422	1,500
Newton Town	0	0	0	0	0	78,697	1,935,275
Ogdensburg Borough	0	0	0	0	0	12,775	18,800
Sandyston Township	0	0	1	0	0	53,240	42,800
Sparta Township	1	1	2	4,000	0	1,688,535	1,123,825
Stanhope Borough	0	0 *	0	0	0	165,074	492,000
Stillwater Township	0	1 *	0	0	0	86,100	52,349
Sussex Borough	0	0	0	0	0	30,420	15,000
Vernon Township	0	7 *	0	0	0	528,198	181,500
Walpack Township	0	0	0	0	0	0	0
Wantage Township	0	11 *	0	0	0	75,590	346,312
Union County							
Berkeley Heights Township	0	3 *	1	0	0	601,228	65,954
Clark Township	76	76	1	0	0	663,050	41,780
Cranford Township	0	18 *	1	0	0	957,367	889,344
Elizabeth City	4	4	0	0	0	509,618	169,985
Fanwood Borough	0	0	1	0	0	624,253	38,218
Garwood Borough	0	8 *	0	0	0	143,771	105,291
Hillside Township	0	0	0	1,476	0	258,736	241,759
Kenilworth Borough	1	0	0	0	0	148,050	168,274
Linden City	3	3	2	0	0	1,408,455	11,317,815
Mountainside Borough	0	1 *	0	0	0	706,333	227,468
New Providence Borough	0	2 *	0	0	0	930,223	426,644
Plainfield City	1	1	0	0	0	2,902,656	600
Rahway City	0	0	51	0	0	908,822	398,106
Roselle Borough	0	0	0	0	0	1,279,186	39,700
Roselle Park Borough	0	2 *	0	0	0	307,502	32,175
Scotch Plains Township	2	3 *	1	0	0	2,550,676	1,264,000
Springfield Township	0	21 *	3	1	0	679,869	1,370,651
Summit City	4	12	3	0	0	3,660,047	1,267,474
Union Township	1	1	0	0	0	1,989,775	3,465,225
Westfield Town	3	5 *	0	0	0	4,454,334	2,247,053
Winfield Township	0	0	0	0	0	10,457	0
Warren County							
Allamuchy Township	0	0	0	0	0	213,643	750
Alpha Borough	No report	0	No report	No report	No report	No report	No report
Belvidere Town	0	0 *	0	0	0	78,819	0
Blairstown Township	0	0	0	0	0	96,619	89,129
Franklin Township	0	0	0	1,040	0	43,080	74,000
Frelinghuysen Township	0	0	0	0	0	20,500	43,971
Greenwich Township	0	0	0	0	0	71,867	122,186
Hackettstown Town	0	13 *	0	0	0	33,758	421,864
Hardwick Township	0	0	0	0	0	82,600	2,050
Harmony Township	0	0	0	0	0	156,895	11,150

MUNICIPAL SUMMARY DATA, July 2013

AREA NAME	AUTHORIZED HOUSING UNITS	AUTHORIZED HOUSING UNITS (CENSUS DEFINITIONS)	HOUSING UNITS CERTIFIED	OFFICE SPACE AUTHORIZED BY BUILDING PERMITS	RETAIL SPACE AUTHORIZED BY BUILDING PERMITS	RESIDENTIAL (\$ AMOUNT)	NONRESIDENTIAL (\$ AMOUNT)
	UNITS						
Hope Township	0	0	0	0	0	20,862	29,000
Independence Township	0	1 *	0	0	0	70,511	35,250
Knowlton Township	0	0	0	0	0	5,902	1,500
Liberty Township	0	0	0	0	0	49,145	3,000
Lopatcong Township	2	6 *	1	0	0	359,698	66,533
Mansfield Township	0	0	0	0	0	149,188	19,305
Oxford Township	0	0	0	0	0	11,200	7,400
Pahaquary Township	See Hardwick Twp	See Hardwick					
Phillipsburg Town	0	0 *	0	0	0	223,596	1,130,331
Pohatcong Township	0	0 *	0	0	0	27,885	25,950
Washington Borough	8	8	4	0	0	1,200,601	70,822
Washington Township	0	0	1	0	0	145,643	264,368
White Township	0	0	1	0	0	42,283	32,375
State Buildings	0		0	0	0	104,811	28,975,722

The New Jersey
CONSTRUCTION REPORTER

JULY 2013 DATA

DISTRIBUTED BY THE

New Jersey Department of
COMMUNITY AFFAIRS
DIVISION OF CODES AND STANDARDS
101 South Broad Street,
PO Box 802
Trenton, NJ 08625-0802
(609) 292-7898
www.nj.gov/dca/divisions/codes/reporter/



DEPARTMENT OF
Community
AFFAIRS

In cooperation with the
STATE DATA CENTER of the
NEW JERSEY DEPARTMENT OF LABOR AND
WORKFORCE DEVELOPMENT

Production and Distribution Staff

RICHARD BYRNE
CYNTHIA CORDERO
LYNN FERRARA
AMY FENWICK FRANK
JOHN LAGO
CHARLES PIERSON, JR.
ANTHONY SCHIAVINO
SUSAN WOIDILL

2013