



FIRE SAFETY FACTS

**A FIRE SAFETY MESSAGE FROM
THE NEW JERSEY DIVISION OF FIRE
SAFETY AND YOUR LOCAL FIRE SERVICE**



www.state.nj.us/divisions/dca/dfs/



Lt. Governor
Sheila Y. Oliver
Commissioner

Phil Murphy
Governor



WHAT ABOUT NUISANCE ALARMS?

Purchase a smoke alarm with a silencing mode, so that it can be stopped quickly and easily. Move it away from the kitchen or bathroom.

Choose a different type of smoke alarm. A photoelectric alarm is less likely to produce a false alarm owed to common causes.

WHAT ABOUT RESIDENTIAL SPRINKLERS?

Smoke alarms are the first line of defense against residential fires.

Residential sprinklers however have proven to be the most effective defense against life and property loss from fire.

New Jersey Division
of Fire Safety



FIRE SAFETY FACTS

**SMOKE
ALARMS
SAVE
LIVES!**



www.state.nj.us/divisions/dca/dfs/



FIRE SAFETY FACTS

WHY DO I NEED A SMOKE ALARM?

You need a smoke alarm only if you care for yourself and your family. Properly placed and maintained smoke alarms will provide you and your family a critical advance warning.

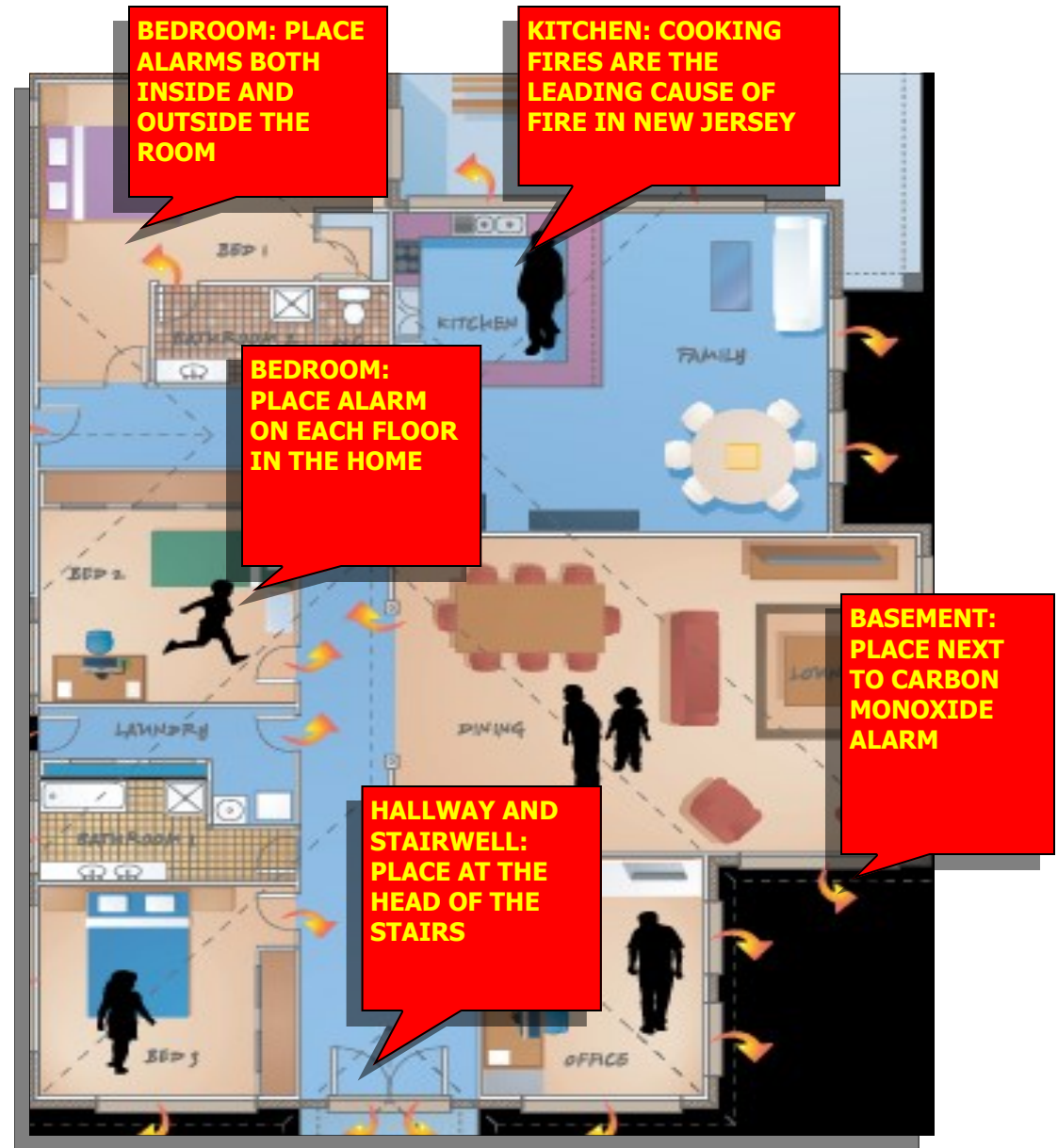
WHAT TYPE DO I NEED?

There are three types **PHOTO ELECTRIC**, **IONIZATION** and **DUAL SENSOR**. Each alarm will respond differently depending on the nature of the fire. The Consumer Product Safety Commission and the US Fire Administration recommend the **DU-AL SENSOR** for optimal response.

WHAT ELSE SHOULD I KNOW?

The most important thing after you purchase and install your smoke alarms is to maintain them. A non-working alarm is about as effective as not having an alarm. Change your batteries at the annual time changes or whenever it "chirps" a low battery signal. Press the test button every so often to make sure it is working.

SMOKE ALARMS: WHERE TO PLACE THEM IN YOUR HOME OR APARTMENT..



PRACTICE YOUR FAMILY ESCAPE ROUTE-CHOOSE A SPECIFIC PLACE TO MEET OUTSIDE AWAY FROM FIRE DANGER-NEVER GO BACK IN!