



NEW JERSEY DEPARTMENT OF
CHILDREN AND FAMILIES

Commissioner's Monthly Report January-26

Christine Beyer
Commissioner

Monthly Report

Table of Contents

TABLE OF CONTENTS	2
KEY PERFORMANCE INDICATORS	3
DCF AT A GLANCE - DASHBOARD	4
SECTION I: CHILD PROTECTION & PERMANENCY	5-7
SECTION II: ADOLESCENT SERVICES	8
SECTION III: INSTITUTIONAL ABUSE INVESTIGATION UNIT	8
SECTION IV: CHILDREN'S SYSTEM OF CARE	9
SECTION V: FAMILY & COMMUNITY PARTNERSHIPS	10
SECTION VI: DIVISION ON WOMEN	10-11
ADDENDUM 1: CASELOADS	12
ADDENDUM 2: CP&P KEY PERFORMANCE INDICATORS BY LOCAL OFFICE	13

¹Key Performance Indicators
On or About November 30th, 2025

	Observed Month	Rolling 12 Month Average	Performance	% Difference
Investigation Timeliness CP&P 60 Days	September '25	79%	76%	-3%
Investigation Timeliness CP&P 90 Days	September '25	92%	90%	-2%
CW Visits Child 2x/Month for first 2 Months in Placement	September '25	81%	77%	-4%
CW Visits Child Monthly (at placement site) ³	November '25	92%	91%	-1%
CW Visits with Parent 2x/Month - Goal of Reunification	November '25	65%	60%	-5%
Parent-Child Weekly Visit ²	November '25	64%	59%	-5%
Parent-Child Visits Bi-weekly	November '25	74%	67%	-7%
Child Visit with Siblings	November '25	79%	83%	4%
Initial Case Plans	November '25	87%	87%	0%
Ongoing Case Plans	November '25	95%	96%	1%
Initial FTMs within 45 days	October '25	55%	45%	-10%
Subsequent FTMs within 12 Months	November '25	63%	59%	-4%
Subsequent FTMs after 12 Months - Reunification Goal (n=16)	November '25	55%	38%	-17%
Subsequent FTMs after 12 Months - Other than Reunification Goal	November '25	80%	75%	-5%
Ind. Living Assessments 14-18 Years Old	November '25	79%	75%	-4%
Caseloads: Intake	November '25	94%	94%	0%
Caseloads: Permanency	November '25	100%	100%	0%
Caseloads: Adoption	November '25	99%	99%	0%
Supervisor Worker Ratio	November '25	100%	100%	0%
Investigation Timeliness IAIU 60 Days	November '25	73%	82%	9%
Caseloads: IAIU Investigators	November '25	99%	98%	-1%
<div> <div></div> Performance is similar to or above the 12 months rolling average </div> <div> <div></div> Performance is below the 12 months rolling average </div>				

¹ In certain measures, performance excludes appropriate instances as per policy where events such as visits or family team meetings did not occur.

² Performance for Parent-Child Weekly Visits is calculated based on the average number of children with weekly visits over the average total number of eligible children for weekly visits.

³ Caseworker visits with Children in Placement (all locations) **November 2025: 96%**.

DCF At A Glance Dashboard

On or About November 30th, 2025

DCF At A Glance		CSOC ⁴ Quick Facts	
DCF: Total Children Served in the Month ¹	70,610	Youth Open with CSOC ⁵ (unduplicated count)	37,855
CP&P: Children/Youth Served	32,755	DD Eligible Children (unduplicated count)	14,409
Children Under 18	30,996	MRSS: Dispatches in the month	2,277
OOH Setting (<18)	2,884	MRSS: Interventions ⁶ (July 2025)	1,672
In-Home Setting (<18)	28,112	Remained in Same Living Situation	96%
Youth 18-21	1,759	Unable to Stabilize in home	3%
OOH Setting (>18)	188	Unknown (Plan not received)	1%
In-Home Setting (>18)	1,571	Care Management: Children Served	16,960
FCP: Total Clients Served ² (Oct)	7,820	OOH Settings : Children Served ⁷ (BH, I/DD, and SU)	1,022
DOW: Total Clients Served (Oct) (Excludes Displaced Homemaker)	4,750	Behavioral Health Placed out of State	0
DCF: Families Served in the Month ³	23,501	Intellectual/Developmental Disabilities Placed out of State	55
CP&P	16,287	PerformCare Calls	7,423
FCP (Family Success Centers & Home Visiting) (Oct)	7,214	I/DD Related Calls	1,693

CP&P Quick Facts		FCP & DoW Quick Facts ⁹	
Hotline Referrals	13,345	FSCs: Families Served (Oct 2025)	3,642
CPS Reports	33%	Home Visiting: Families Served (Oct 2025)	3,572
CWS Referrals	6%	SBYSP: Students Receiving Evidence-Based Prevention Programs (Oct 2025)	606
Number of Human Trafficking Referrals ⁸ (November 2025)	9		
Response Timeliness	98%	DV Services: Clients Served (Oct 2025)	2,260
Monthly Staff Contacts/Children OOH-Placement Site	91%	Residential	12%
Entries to Care	104	Non-Residential	88%
Exits from Care	170		
Subsidized Adoptions/KLG	11,093	SAARC: Clients Served (Oct 2025)	2,490
(Includes Subsidized Adoptions and subsidized KLGs)			

¹ Some children may be served by both CP&P and CSOC and are over-represented in the final count of children served in the month.

² FCP measures clients served in SBYSP and DV Services. Since Family Success Centers and Home Visitation programs report data in terms of families served, each family is assumed to have at least one client.

³ Families served by DCF includes CP&P families and FCP families. FCP families served data has a one month lag.

⁴ CSOC Children may receive multiple services and are counted multiple times.

⁵ The definition for "Youth Open with CSOC" reflects youth who are involved and eligible to receive services through CSOC.

⁶ Mobile Response Interventions has a five month lag to allow for the data to settle for accurate reporting.

⁷ As of October 2022, the CSOC OOH sections will now include all CSOC Out of Home Treatment Settings (Behavioral Health, Intellectual/Developmentally Disabled, and Substance Use). This includes updating the totals reported, a new 3-year OOH trend report, and a monthly OOH report grouped by similar treatment settings.

⁸ The cumulative number of human trafficking referrals between **November 2013 and November 2025 was 1,547**. This figure could change depending on when the data is extracted.

⁹ FCP quick facts are based on new families for FSCs, but both new and ongoing clients for Home Visiting and SBYSP. DoW quick facts are based on new clients for DV Services, but both new and ongoing clients served for SAARC, Displaced Homemakers and Rape Prevention Education.

Note: OOH Behavioral Health Settings: Children Served - Excludes Youth in Detention Alternatives and Diagnostic Settings.

Effective June 2017, All DoW data is reported Monthly except for Residential DV shelters and Unmet Needs Data.

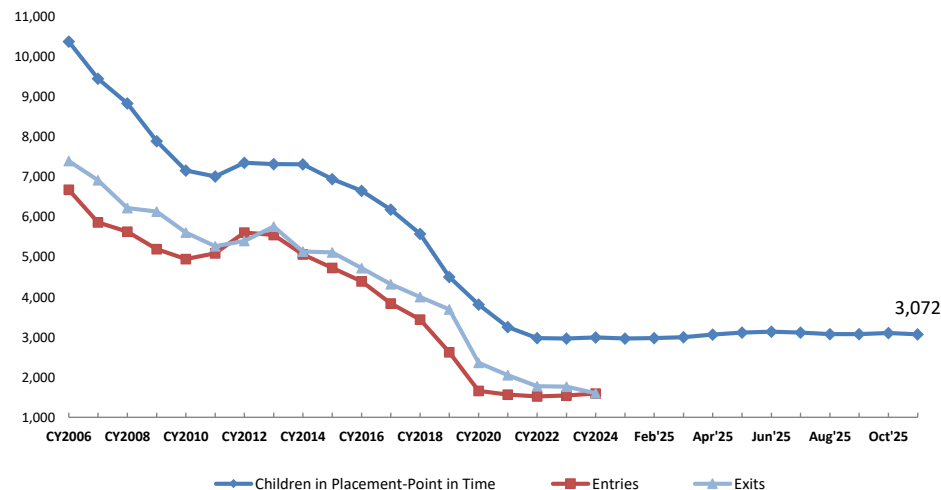
Note: Due to system upgrades within DCF, Displaced Homemaker data will not be available beginning November 2021. DCF will resume reporting on these data after the new systems have been updated with these data.

Section I: Child Protection & Permanency

CP&P Quick Facts

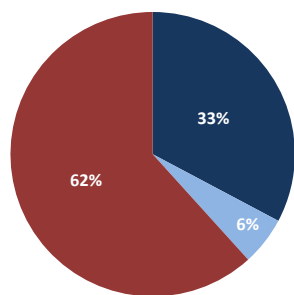
	As of Nov 30th 2025	Δ from Nov '24
Families Under CP&P Supervision	16,287	-1%
Children Under CP&P Supervision	32,755	0%
Children Receiving CP&P In-Home Services	29,683	-1%
Children in CP&P Out-of-Home Placement		
Resource Family (non-Kin)	40% 1,241	
Resource Family Kinship	46% 1,414	
Group and Residential	12% 374	
Independent Living	1% 43	
Children Legally Free for Adoption (Excludes TPR Appeals)	347	-10%
Finalized Adoptions to date (CY2025) - As of 11/30/2025	306	-16%
Children in Subsidized Kinship Legal Guardianship	1,274	1%
Children in Subsidized Adoptions	9,819	-8%
Entries to Care	104	-8%
Exits from Care	170	-6%

Children in Out-of-Home Placement:
Annual Entries, Exits and Monthly Point in Time Children in Placement



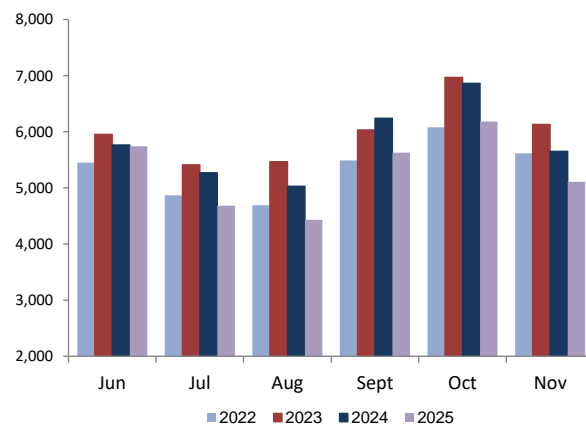
Total SCR Intakes

n = 13,345
November 2025

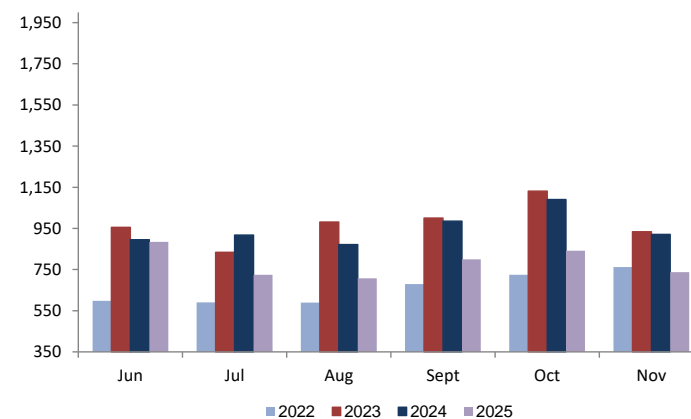


- CPS Reports
- CWS Referrals
- Non CPS/CWS Child Related Calls

CPS & CWS Referrals

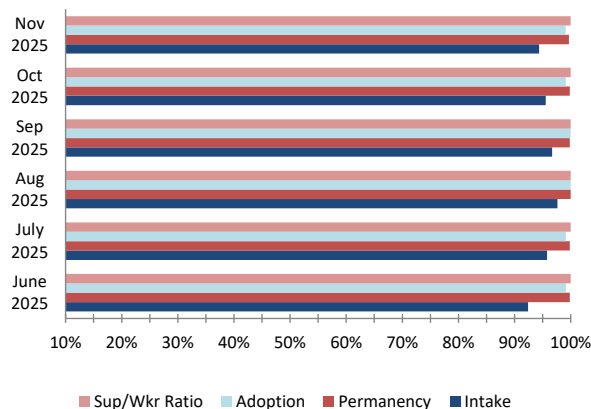


CWS Referrals Assigned to Local Offices

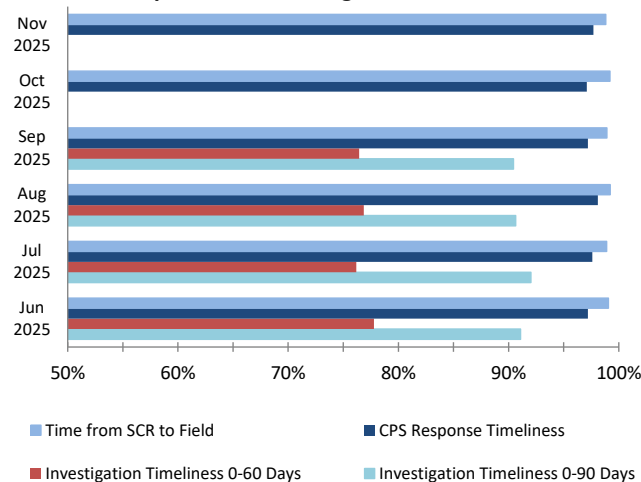


Section I: Child Protection & Permanency

**Caseload Compliance
(Individual Worker Level)**

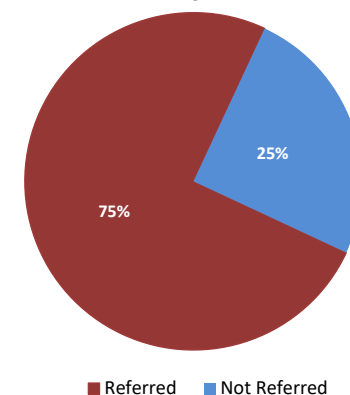


Response and Investigation Timeliness

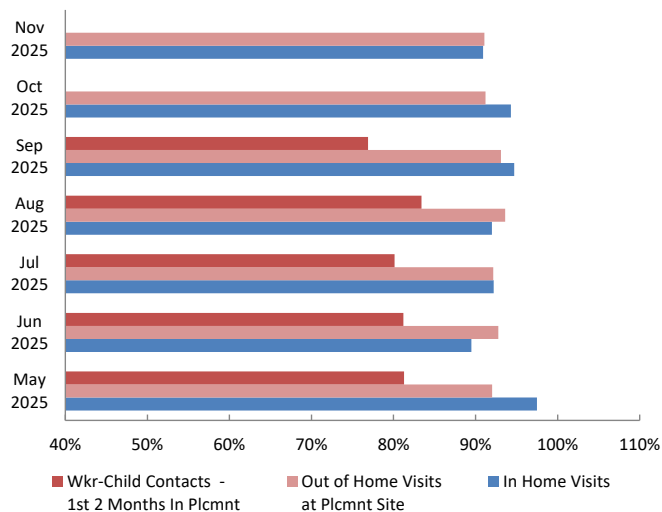


Referrals to Early Intervention

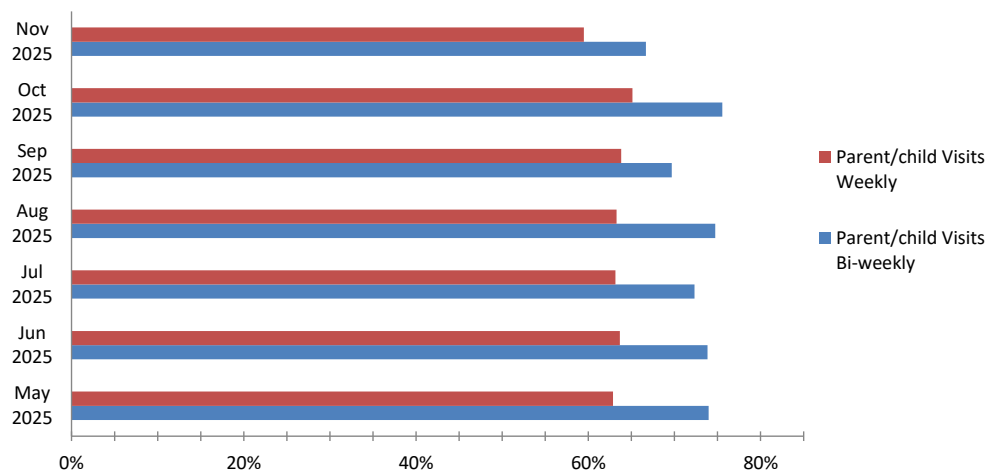
Oct 2025 - Nov 2025
n = 75



Worker - Child Visits

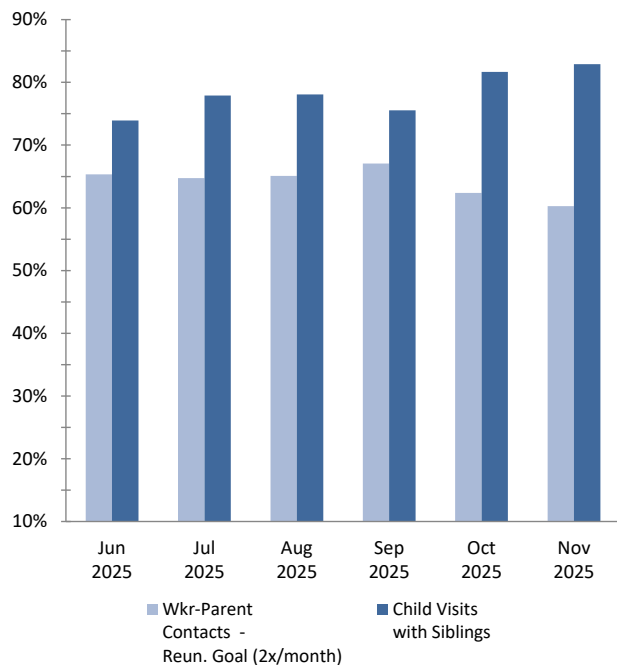


Parent - Child Visits

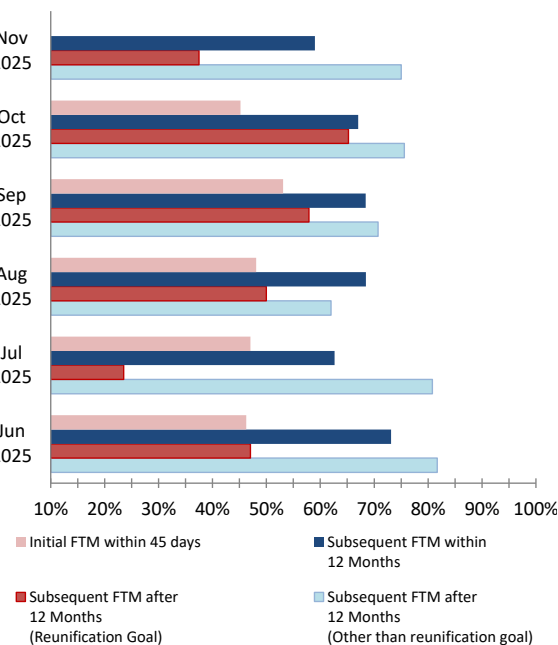


Section I: Child Protection & Permanency

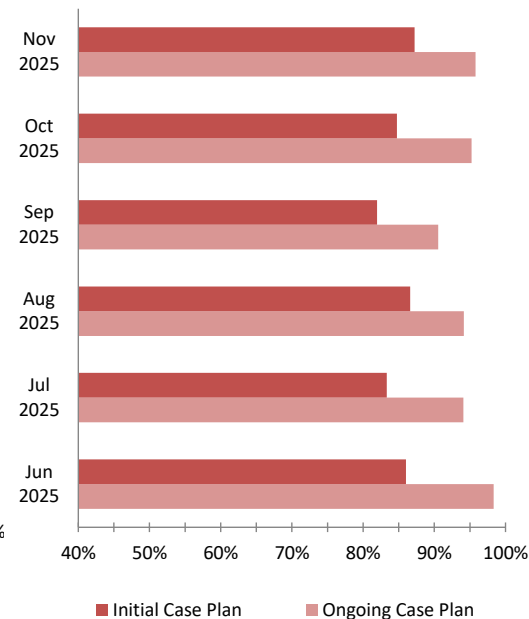
Worker- Parent Visits & Sibling Visits



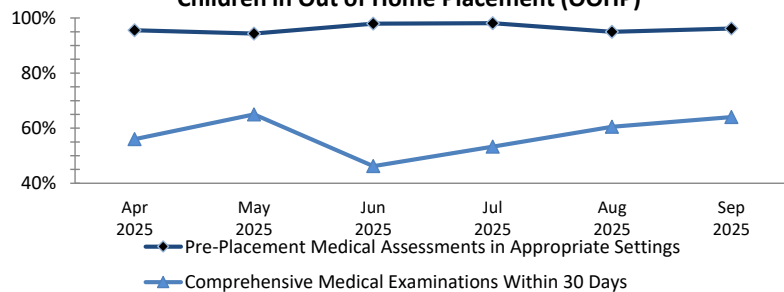
Initial & Subsequent Family Team Meetings



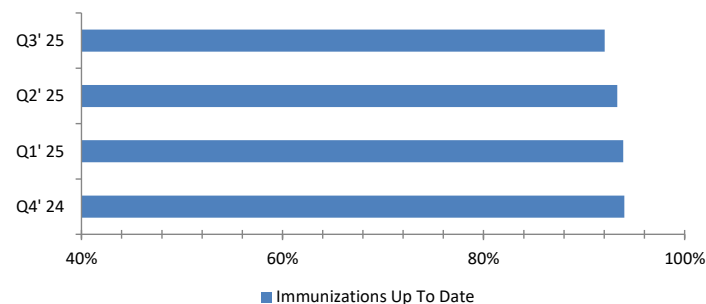
Initial & Ongoing Case Plans



Medical Assessments for
Children in Out of Home Placement (OOHP)



Immunizations for
Children in OOHP



Section II: Adolescent Services

OAS Quick Facts (November 2025)

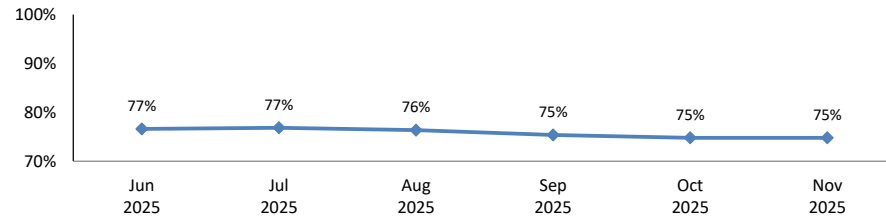
Youth 18-23

Youth 18-23 years old served by CP&P¹			1,759
Youth served "In Home" living with a parent/relative or living independently²			1,571
Youth served "Out-of-Home"			188
Resource Family (non-Kin)	(35.1%)	66	
Resource Family Kinship	(18.6%)	35	
Congregate Care Setting	(28.2%)	53	
Independent Living	(17.6%)	33	
Public Institution	(01.0%)	1	
Youth Receiving Adoption or KLG Subsidy			552

¹ The data includes all 18-21 year olds who are active participants in an open CP&P case as of the end of the month.

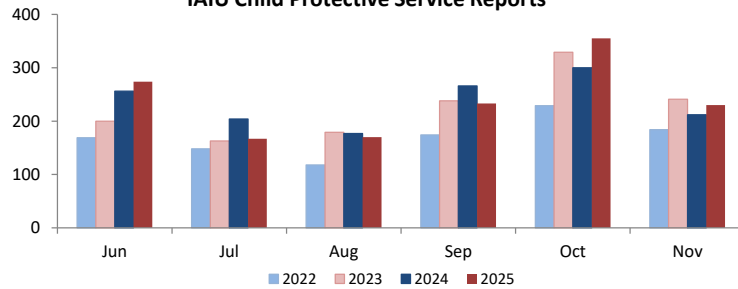
² The terms "out-of-home" and "in-home" may not be appropriate for all 18-21 year olds. Youth identified as "in-home" can either be residing with a parent/relative, or living independently. Any of these youth may be receiving services. These definitions are currently being reviewed to better understand how we capture DCF's work with this population. The goal of this ongoing work is to create three meaningful categories for 18-21 year olds 1) Youth in a formal out-of-home placement setting, 2) Youth that achieved permanency, and 3) Youth that never achieved permanency.

Completed Independent Living Assessments of Youth Ages 14-18 years

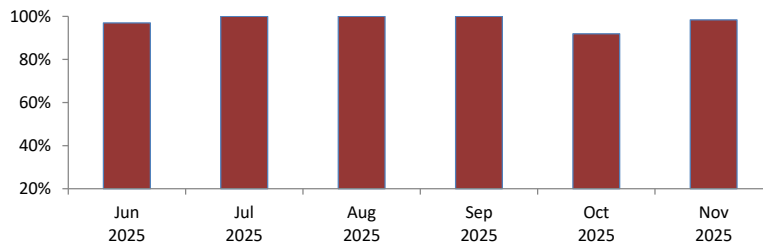


Section III: Institutional Abuse Investigation Unit

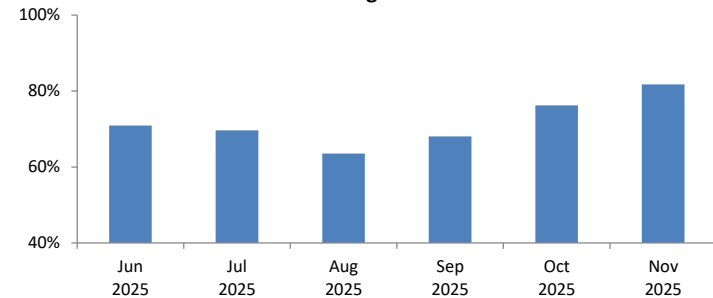
IAIU Child Protective Service Reports



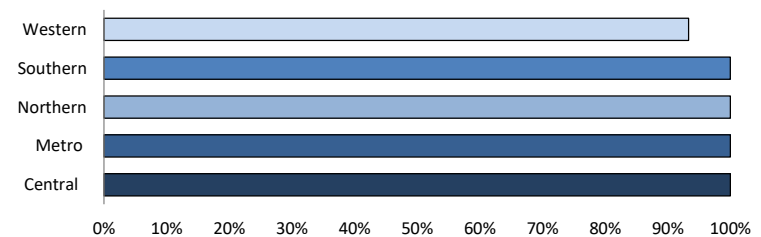
IAIU Caseload Report Statewide



IAIU Investigation Timeliness



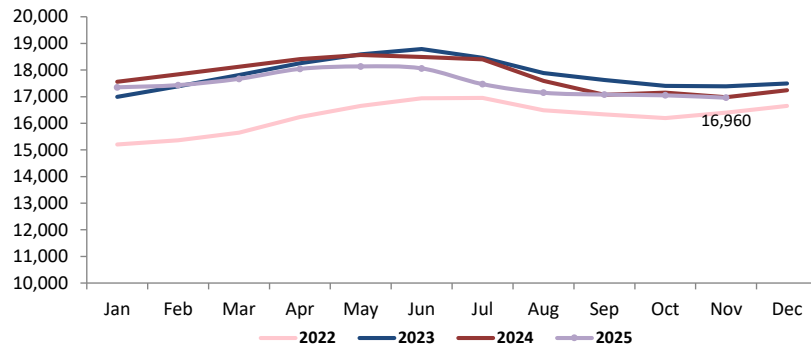
IAIU Caseload Report by Region November 2025



Section IV: Children's System of Care

Children in Care Management

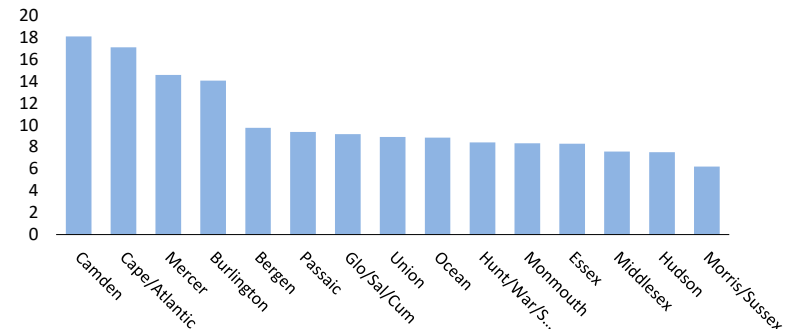
as of November 30th 2025



Rate of Children in Care Management by Service Area

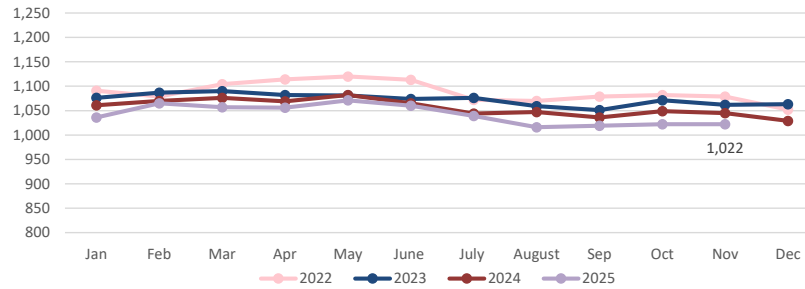
as of November 30th 2025

n=16,960



Children in Out of Home Treatment Settings

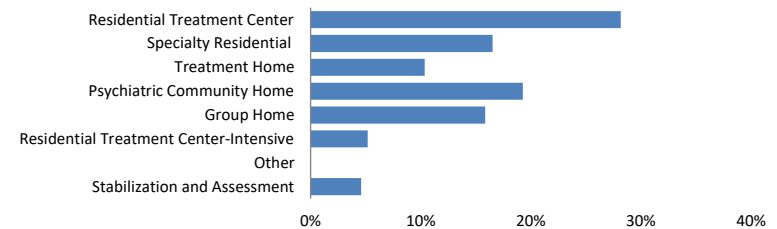
as of November 30th 2025



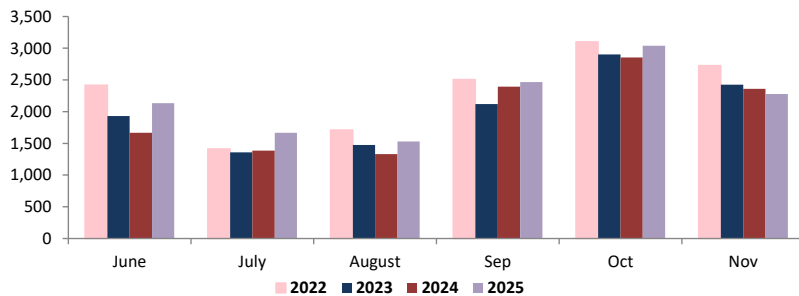
Children in Out-of-Home Treatment Settings

as of November 30th 2025

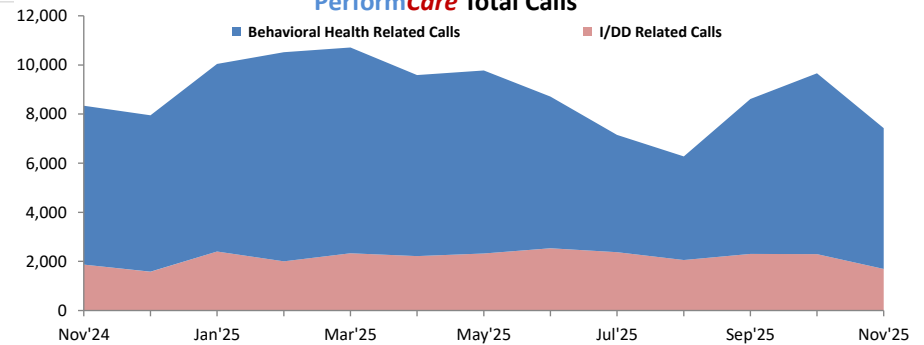
n= 1,022



Mobile Response Stabilization Services (MRSS) Dispatched

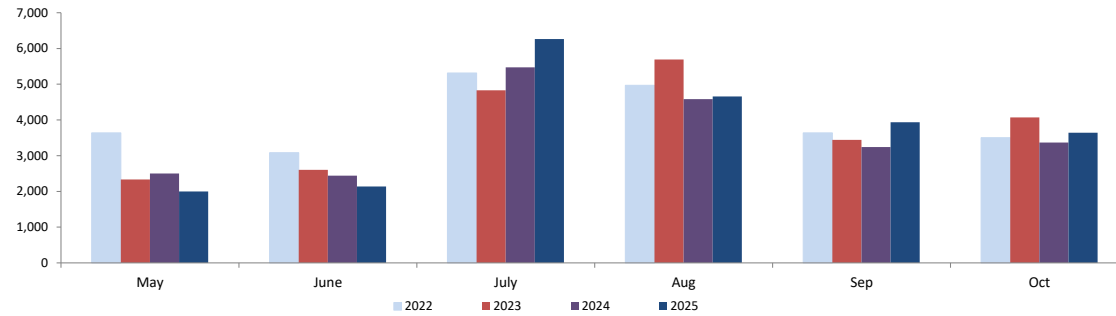


PerformCare Total Calls



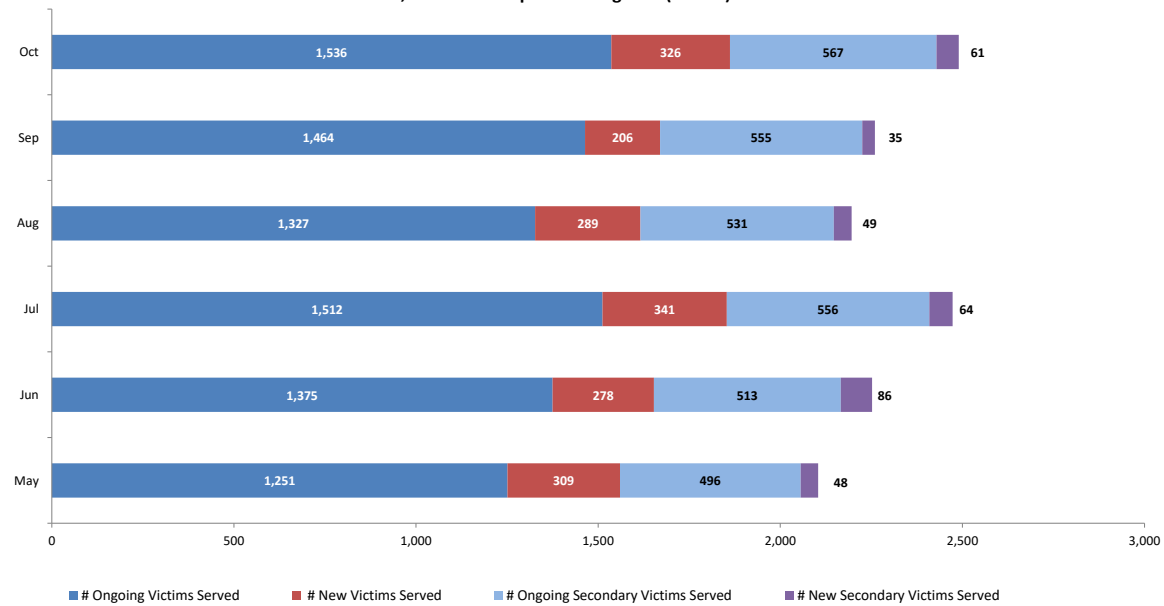
Section V: Family & Community Partnerships

Family Success Centers - Families Served



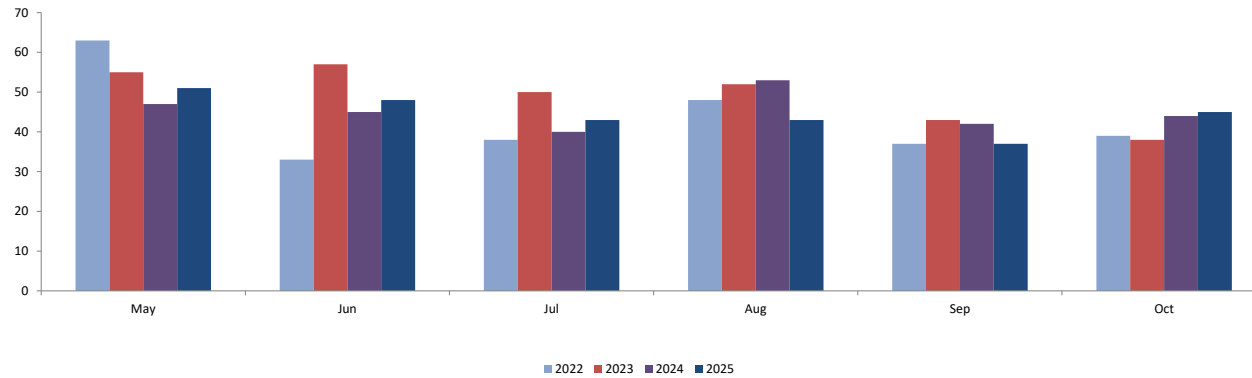
Section VI: Division on Women

Sexual Assault, Abuse and Rape Care Programs (SAARC)

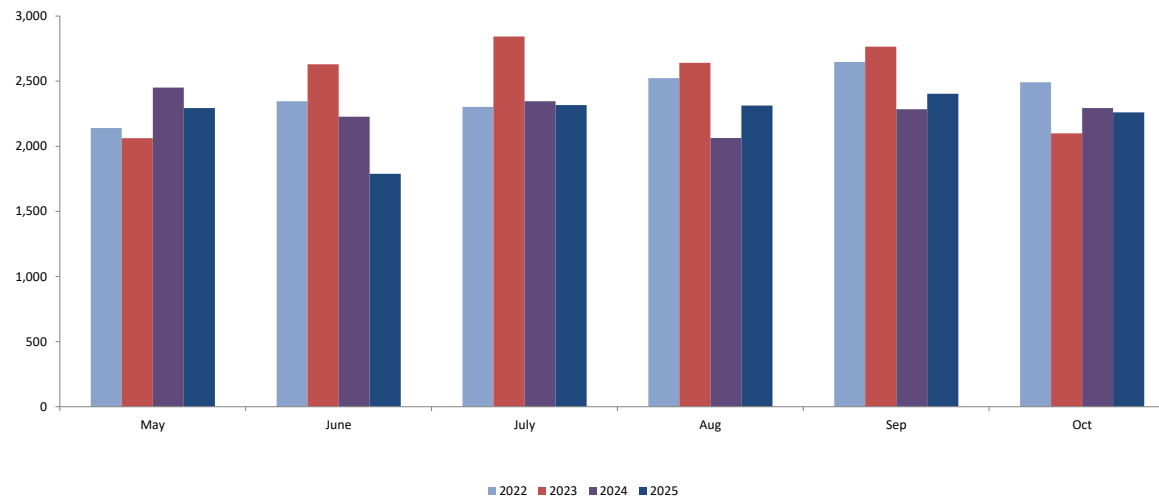


Section VI: Division on Women

**Residential Domestic Violence Programs:
Victims' Average Length of Stay (days)**



**Domestic Violence Services - Adults and Children
Admitted to Residential and Non-Residential Services
Total New Clients**



Worker and Office Caseloads by Worker Type and by Local Office - November 2025

	At or Above Statewide Performance		Below Statewide Performance			
Local Office	¹ Intake		² Permanency		³ Adoption	
	Worker Compliance	Office Compliant? Yes/No	Worker Compliance	Office Compliant? Yes/No	Worker Compliance	Office Compliant? Yes/No
Atlantic East	100%	Yes	100%	Yes	100%	Yes
Atlantic West	95%	Yes	100%	Yes	100%	Yes
Bergen Central	100%	Yes	100%	Yes	100%	Yes
Bergen South	100%	Yes	100%	Yes	100%	Yes
Burlington East	96%	Yes	100%	Yes	100%	Yes
Burlington West	83%	No	100%	Yes	100%	Yes
Camden Central	79%	No	100%	Yes	67%	No
Camden East	79%	No	100%	Yes	100%	Yes
Camden North	95%	Yes	100%	Yes	100%	Yes
Camden South	94%	Yes	100%	Yes	100%	Yes
Cape May	100%	Yes	100%	Yes	100%	Yes
Cumberland East	100%	Yes	100%	Yes	100%	Yes
Cumberland West	95%	Yes	100%	Yes	100%	Yes
Essex Central	81%	No	100%	Yes	100%	Yes
Essex North	70%	No	100%	Yes	100%	Yes
Essex South	83%	No	89%	No	100%	Yes
Gloucester East	100%	Yes	92%	No	100%	Yes
Gloucester West	91%	Yes	100%	Yes	100%	Yes
Hudson Central	90%	Yes	100%	Yes	100%	Yes
Hudson North	100%	Yes	100%	Yes	100%	Yes
Hudson South	100%	Yes	100%	Yes	100%	Yes
Hudson West	100%	Yes	100%	Yes	100%	Yes
Hunterdon	100%	Yes	100%	Yes	100%	Yes
Mercer North	78%	No	100%	Yes	100%	Yes
Mercer South	95%	Yes	100%	Yes	100%	Yes
Middlesex Central	95%	Yes	100%	Yes	100%	Yes
Middlesex Coastal	100%	Yes	100%	Yes	100%	Yes
Middlesex West	100%	Yes	100%	Yes	100%	Yes
Monmouth North	100%	Yes	100%	Yes	100%	Yes
Monmouth South	100%	Yes	100%	Yes	100%	Yes
Morris East	100%	Yes	100%	Yes	100%	Yes
Morris West	100%	Yes	100%	Yes	100%	Yes
Newark Center City	100%	Yes	100%	Yes	100%	Yes
Newark Northeast	75%	No	100%	Yes	100%	Yes
Ocean North	100%	Yes	100%	Yes	100%	Yes
Ocean South	94%	Yes	100%	Yes	100%	Yes
Passaic Central	97%	Yes	100%	Yes	100%	Yes
Passaic North	97%	Yes	100%	Yes	100%	Yes
Salem	92%	Yes	100%	Yes	100%	Yes
Somerset	100%	Yes	100%	Yes	100%	Yes
Sussex	100%	Yes	100%	Yes	100%	
Union Central	100%	Yes	100%	Yes	100%	Yes
Union East	100%	Yes	100%	Yes	100%	Yes
Union West	100%	Yes	100%	Yes	100%	Yes
Warren	85%	No	100%	Yes	100%	Yes
Statewide⁴	94%	Yes	100%	Yes	99%	Yes

1 Intake

- Intake worker compliance: % of workers with no more than 8 new intakes in the month, no more than 12 Primary families and no more than a total of 14 families.

- Office Compliance: % of offices that meet the caseload standards of no more than 8 new intakes and 12 total families.

2 Permanency

- Permanency worker compliance: % of workers who meet the caseload standards of no more than 15 families and 10 children in placement.

- Office Compliance: % of offices that meet the caseload standards of no more than 15 families and 10 children in placement.

3 Adoption

- Adoption worker compliance: % of adoption workers who meet the caseload standards of 15 or fewer children.

- Office Compliance: % of offices that meet the caseload standards of 15 or fewer children.

- Offices with blank data do not carry adoption caseloads, however adoption cases in those offices are handled by other offices in that area.

4 Statewide

- Performance is based on total workers in compliance for the month, not an average. Percentages are rounded to the whole number.

CP&P Key Performance Indicators by Local Office - 6 Months View														
Local Office	At or Above Statewide Performance							Below Statewide Performance						
	CPS Investigations Completed w/ 60 Days	CPS Investigations Completed w/ 90 Days	Monthly Staff Visits w/Children in Placement	Visits w/Children in Placement 2x/Month for 2 Months	Visits with Parents of Children in Placement 2x/Month	Weekly Parent/Child Visits-Children with Goal of Reunification	Bi-weekly Parent-Child Visits-Children with Goal of Reunification	Monthly Sibling Visits	Initial Case Plans w/ 30 Days of Placement	6 Months Review of Case Plans for Children in Placement	Initial Family Team Meetings w/ 45 days of Placement	3 Family Team Meetings in the first 12 months of Placement	3 Family Team Meetings after 12 months in Placement	2 Family Team Meeting after 12 months in Placement
Atlantic East	91%	97%	90%	79%	56%	52%	66%	75%	93%	99%	65%	80%	43%	53%
Atlantic West	79%	89%	96%	75%	61%	69%	79%	94%	100%	97%	100%	93%	0%	58%
Bergen Central	87%	96%	94%	63%	82%	79%	83%	81%	88%	87%	63%	100%	100%	80%
Bergen South	89%	95%	99%	89%	69%	66%	78%	96%	59%	95%	63%	100%		100%
Burlington East	67%	90%	95%	74%	62%	47%	70%	78%	81%	92%	28%	67%	0%	86%
Burlington West	76%	92%	91%	71%	50%	53%	70%	74%	93%	92%	21%	10%	6%	16%
Camden Central	68%	83%	80%	62%	53%	58%	64%	86%	70%	84%	34%	33%	30%	52%
Camden East	57%	83%	88%	76%	61%	59%	74%	81%	67%	98%	34%	75%	0%	71%
Camden North	65%	86%	96%	81%	72%	54%	80%	96%	77%	92%	27%	100%		92%
Camden South	67%	96%	93%	81%	65%	63%	77%	85%	89%	90%	26%	63%	50%	89%
Cape May	73%	88%	95%	80%	67%	59%	57%	81%	87%	100%	64%	71%	100%	88%
Cumberland East	75%	93%	93%	91%	81%	100%	90%	100%	100%	100%	65%	73%		100%
Cumberland West	66%	90%	95%	100%	85%	72%	89%	95%	100%	100%	100%	92%	100%	100%
Essex Central	69%	86%	92%	71%	38%	45%	46%	89%	93%	98%	35%	50%	0%	83%
Essex North	68%	82%	93%	57%	19%	18%	22%	63%	100%	100%	0%		0%	67%
Essex South	68%	83%	83%	65%	22%	27%	32%	64%	100%	87%	8%	10%	25%	36%
Gloucester East	95%	97%	92%	94%	56%	64%	76%	93%	91%	91%	54%	83%	75%	100%
Gloucester West	48%	70%	97%	86%	79%	82%	81%	93%	87%	87%	41%	88%	100%	56%
Hudson Central	73%	89%	98%	89%	83%	84%	89%	100%	100%	98%	75%	100%	67%	100%
Hudson North	85%	92%	92%	100%	76%	73%	88%	100%	100%	100%	100%	100%		100%
Hudson South	84%	94%	97%	89%	55%	42%	57%	84%	100%	100%	38%	100%	0%	25%
Hudson West	86%	96%	94%	56%	55%	47%	68%	67%	75%	86%	70%	50%	0%	56%
Hunterdon	93%	97%	99%	100%	67%	96%	88%	97%	100%	100%	100%	100%		100%
Mercer North	67%	87%	90%	68%	48%	52%	48%	51%	88%	74%	40%	44%	43%	71%
Mercer South	83%	95%	94%	60%	54%	40%	65%	85%	86%	92%	19%	44%	38%	67%
Middlesex Central	69%	90%	96%	75%	66%	58%	79%	94%	90%	81%	67%	86%		100%
Middlesex Coastal	79%	94%	93%	54%	84%	77%	80%	69%	50%	91%	13%	88%	67%	67%
Middlesex West	69%	84%	95%	88%	48%	56%	75%	88%	91%	88%	63%	50%	100%	50%
Monmouth North	98%	99%	99%	100%	85%	86%	89%	100%	100%	100%	91%	83%		86%
Monmouth South	86%	98%	97%	93%	76%	86%	93%	100%	100%	100%	57%	93%	100%	89%
Morris East	80%	92%	99%	100%	87%	100%	88%	100%	100%	100%	80%	100%	100%	100%
Morris West	85%	96%	99%	100%	79%	97%	90%	100%	100%	100%	100%			100%
Newark Center City	58%	85%	96%	94%	69%	35%	55%	83%	88%	100%	62%	14%	57%	80%
Newark Northeast	56%	75%	83%	39%	29%	51%	58%	74%	100%	100%	0%	23%	11%	33%
Newark South	38%	70%	87%	0%	41%	0%	68%	94%	0%	95%	0%	7%		100%
Ocean North	85%	94%	96%	92%	69%	66%	84%	93%	100%	92%	78%	100%	100%	100%
Ocean South	90%	96%	94%	100%	72%	72%	78%	85%	100%	97%	75%	100%	60%	89%
Passaic Central	84%	94%	96%	97%	85%	90%	84%	100%	97%	100%	100%	100%	100%	100%
Passaic North	91%	97%	96%	93%	94%	97%	88%	100%	100%	100%	83%	100%	100%	100%
Salem	61%	86%	93%	96%	86%	71%	93%	90%	100%	100%	84%	100%		100%
Somerset	70%	92%	98%	75%	77%	47%	80%	98%	83%	97%	40%	75%		0%
Sussex	88%	98%	96%	100%	82%	61%	67%	100%	100%	100%	100%	100%		100%
Union Central	79%	94%	96%	83%	79%	71%	89%	93%	86%	100%	100%	100%	100%	57%
Union East	86%	97%	98%	100%	73%	100%	84%	100%	100%	100%	88%	100%	100%	100%
Union West	79%	96%	95%	100%	47%	80%	76%	72%	60%	100%	44%	67%		64%
Warren	47%	71%	92%	75%	70%	84%	85%	55%	67%	92%	14%	46%		57%
Statewide	77%	91%	93%	81%	63%	61%	72%	84%	89%	95%	53%	66%	46%	75%
Blank cells mean that the office did not have any children eligible for that measure during that period.														
These data points are preliminary and subject to change based on user data entry.														
Description of the Measure											Time Period Analyzed			
CPS Investigations Completed w/ 60 Days											April 25 - September 25			
CPS Investigations Completed w/ 90 Days											April 25 - September 25			
Monthly Staff Visits w/Children in Placement											June 25 - November 25			
Visits w/Children in Placement 2x/Month for 2 Months											April 25 - September 25			
Visits with Parents of Children in Placement 2x/Month											June 25 - November 25			
Weekly Parent/Child Visits-Children with Goal of Reunification											10/25/2025 - 11/29/2025			
Bi-weekly Parent-Child Visits-Children with Goal of Reunification											June 25 - November 25			
Monthly Sibling Visits											June 25 - November 25			
Initial Case Plans w/ 30 Days of Placement											June 25 - November 25			
6 Months Review of Case Plans for Children in Placement											June 25 - November 25			
Initial Family Team Meetings w/ 45 days of Placement											May 25 - October 25			
3 Family Team Meetings in the first 12 months of Placement											June 25 - November 25			
3 Family Team Meetings after 12 months in Placement											June 25 - November 25			
2 Family Team Meeting after 12 months in Placement											June 25 - November 25			