



NEW JERSEY DEPARTMENT OF
CHILDREN AND FAMILIES

Commissioner's Monthly Report November-25

Christine Beyer
Commissioner

Monthly Report

Table of Contents

| | |
|--|--------------|
| TABLE OF CONTENTS | 2 |
| KEY PERFORMANCE INDICATORS | 3 |
| DCF AT A GLANCE - DASHBOARD | 4 |
| SECTION I: CHILD PROTECTION & PERMANENCY | 5-7 |
| SECTION II: ADOLESCENT SERVICES | 8 |
| SECTION III: INSTITUTIONAL ABUSE INVESTIGATION UNIT | 8 |
| SECTION IV: CHILDREN'S SYSTEM OF CARE | 9 |
| SECTION V: FAMILY & COMMUNITY PARTNERSHIPS | 10 |
| SECTION VI: DIVISION ON WOMEN | 10-11 |
| ADDENDUM 1: CASELOADS | 12 |
| ADDENDUM 2: CP&P KEY PERFORMANCE INDICATORS BY LOCAL OFFICE | 13 |

¹Key Performance Indicators
On or About September 30th, 2025

| | Observed Month | Rolling 12 Month Average | Performance | % Difference |
|---|----------------|--------------------------|-------------|--------------|
| Investigation Timeliness CP&P 60 Days | July '25 | 80% | 76% | -4% |
| Investigation Timeliness CP&P 90 Days | July '25 | 93% | 92% | -1% |
| CW Visits Child 2x/Month for first 2 Months in Placement | July '25 | 81% | 80% | -1% |
| CW Visits Child Monthly (at placement site) ³ | September '25 | 92% | 93% | 1% |
| CW Visits with Parent 2x/Month - Goal of Reunification | September '25 | 66% | 67% | 1% |
| Parent-Child Weekly Visit ² | September '25 | 65% | 64% | -1% |
| Parent-Child Visits Bi-weekly | September '25 | 74% | 70% | -4% |
| Child Visit with Siblings | September '25 | 79% | 76% | -3% |
| Initial Case Plans | September '25 | 88% | 82% | -6% |
| Ongoing Case Plans | September '25 | 95% | 91% | -4% |
| Initial FTMs within 45 days | August '25 | 58% | 48% | -10% |
| Subsequent FTMs within 12 Months | September '25 | 62% | 68% | 6% |
| Subsequent FTMs after 12 Months - Reunification Goal (n=19) | September '25 | 56% | 58% | 2% |
| Subsequent FTMs after 12 Months - Other than Reunification Goal | September '25 | 82% | 71% | -11% |
| Ind. Living Assessments 14-18 Years Old | September '25 | 81% | 75% | -6% |
| Caseloads: Intake | September '25 | 94% | 97% | 3% |
| Caseloads: Permanency | September '25 | 100% | 100% | 0% |
| Caseloads: Adoption | September '25 | 99% | 100% | 1% |
| Supervisor Worker Ratio | September '25 | 100% | 100% | 0% |
| Investigation Timeliness IAIU 60 Days | September '25 | 73% | 68% | -5% |
| Caseloads: IAIU Investigators | September '25 | 99% | 100% | 1% |
| <div> <div></div> Performance is similar to or above the 12 months rolling average </div> <div> <div></div> Performance is below the 12 months rolling average </div> | | | | |

¹ In certain measures, performance excludes appropriate instances as per policy where events such as visits or family team meetings did not occur.

² Performance for Parent-Child Weekly Visits is calculated based on the average number of children with weekly visits over the average total number of eligible children for weekly visits.

³ Caseworker visits with Children in Placement (all locations) **September 2025: 97%**.

DCF At A Glance Dashboard

On or About September 30th, 2025

| DCF At A Glance | | CSOC ⁴ Quick Facts | |
|--|--------|--|--------|
| DCF: Total Children Served in the Month ¹ | 66,797 | Youth Open with CSOC ⁵ (unduplicated count) | 36,189 |
| CP&P: Children/Youth Served | 30,608 | DD Eligible Children (unduplicated count) | 14,353 |
| Children Under 18 | 28,982 | MRSS: Dispatches in the month | 2,466 |
| OOH Setting (<18) | 2,897 | MRSS: Interventions ⁶ (May 2025) | 3,042 |
| In-Home Setting (<18) | 26,085 | Remained in Same Living Situation | 97% |
| Youth 18-21 | 1,626 | Unable to Stabilize in home | 1% |
| OOH Setting (>18) | 183 | Unknown (Plan not received) | 2% |
| In-Home Setting (>18) | 1,443 | Care Management: Children Served | 17,078 |
| FCP: Total Clients Served ² (Aug) | 8,393 | OOH Settings : Children Served ⁷ (BH, I/DD, and SU) | 1,019 |
| DOW: Total Clients Served (Aug) (Excludes Displaced Homemaker) | 4,509 | Behavioral Health Placed out of State | 0 |
| DCF: Families Served in the Month ³ | 23,578 | Intellectual/Developmental Disabilities Placed out of State | 50 |
| CP&P | 15,326 | PerformCare Calls | 8,611 |
| FCP (Family Success Centers & Home Visiting) (Aug) | 8,252 | I/DD Related Calls | 2,301 |

| CP&P Quick Facts | | FCP & DoW Quick Facts ⁹ | |
|---|--------|---|-------|
| Hotline Referrals | 14,018 | FSCs: Families Served (Aug 2025) | 4,656 |
| CPS Reports | 34% | Home Visiting: Families Served (Aug 2025) | 3,596 |
| CWS Referrals | 6% | SBYSP: Students Receiving Evidence-Based Prevention Programs (Aug 2025) | 141 |
| Number of Human Trafficking Referrals ⁸ (August 2025) | 7 | | |
| Response Timeliness | 97% | DV Services: Clients Served (Aug 2025) | 2,313 |
| Monthly Staff Contacts/Children OOH-Placement Site | 93% | Residential | 14% |
| Entries to Care | 134 | Non-Residential | 86% |
| Exits from Care | 106 | | |
| Subsidized Adoptions/KLG (Includes Subsidized Adoptions and subsidized KLGs) | 11,142 | SAARC: Clients Served (Aug 2025) | 2,196 |

¹ Some children may be served by both CP&P and CSOC and are over-represented in the final count of children served in the month.

² FCP measures clients served in SBYSP and DV Services. Since Family Success Centers and Home Visitation programs report data in terms of families served, each family is assumed to have at least one client.

³ Families served by DCF includes CP&P families and FCP families. FCP families served data has a one month lag.

⁴ CSOC Children may receive multiple services and are counted multiple times.

⁵ The definition for "Youth Open with CSOC" reflects youth who are involved and eligible to receive services through CSOC.

⁶ Mobile Response Interventions has a five month lag to allow for the data to settle for accurate reporting.

⁷ As of October 2022, the CSOC OOH sections will now include all CSOC Out of Home Treatment Settings (Behavioral Health, Intellectual/Developmentally Disabled, and Substance Use). This includes updating the totals reported, a new 3-year OOH trend report, and a monthly OOH report grouped by similar treatment settings.

⁸ The cumulative number of human trafficking referrals between **November 2013 and September 2025 was 1,529**. This figure could change depending on when the data is extracted.

⁹ FCP quick facts are based on new families for FSCs, but both new and ongoing clients for Home Visiting and SBYSP. DoW quick facts are based on new clients for DV Services, but both new and ongoing clients served for SAARC, Displaced Homemakers and Rape Prevention Education.

Note: OOH Behavioral Health Settings: Children Served - Excludes Youth in Detention Alternatives and Diagnostic Settings.

Effective June 2017, All DoW data is reported Monthly except for Residential DV shelters and Unmet Needs Data.

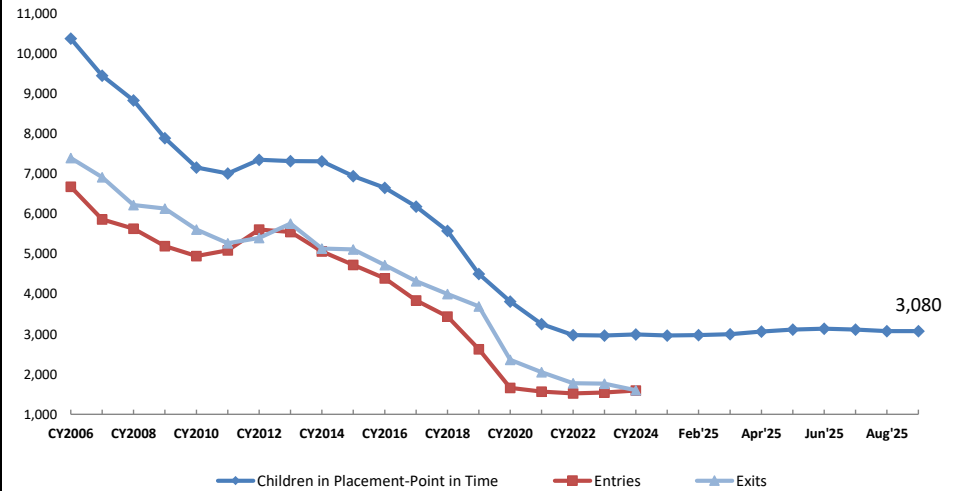
Note: Due to system upgrades within DCF, Displaced Homemaker data will not be available beginning November 2021. DCF will resume reporting on these data after the new systems have been updated with these data.

Section I: Child Protection & Permanency

CP&P Quick Facts

| | As of Sep 30th 2025 | Δ from Sep '24 |
|---|---------------------|----------------|
| Families Under CP&P Supervision | 15,326 | -3% |
| Children Under CP&P Supervision | 30,608 | -2% |
| Children Receiving CP&P In-Home Services | 27,528 | -2% |
| Children in CP&P Out-of-Home Placement | | |
| Resource Family (non-Kin) | 41% 1,251 | 0% |
| Resource Family Kinship | 46% 1,414 | |
| Group and Residential | 12% 373 | |
| Independent Living | 1% 42 | |
| Children Legally Free for Adoption (Excludes TPR Appeals) | 404 | -10% |
| Finalized Adoptions to date (CY2025) - As of 09/30/2025 | 195 | -18% |
| Children in Subsidized Kinship Legal Guardianship | 1,251 | -1% |
| Children in Subsidized Adoptions | 9,891 | -8% |
| Entries to Care | 134 | 1% |
| Exits from Care | 106 | 14% |

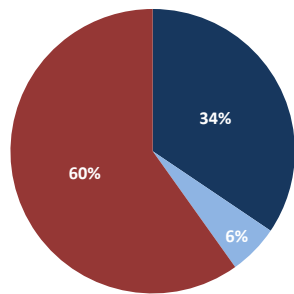
Children in Out-of-Home Placement:
Annual Entries, Exits and Monthly Point in Time Children in Placement



Point in Time data is based on data as of the last day of each month.
Axis begins at 2,000 to enhance separation of data.

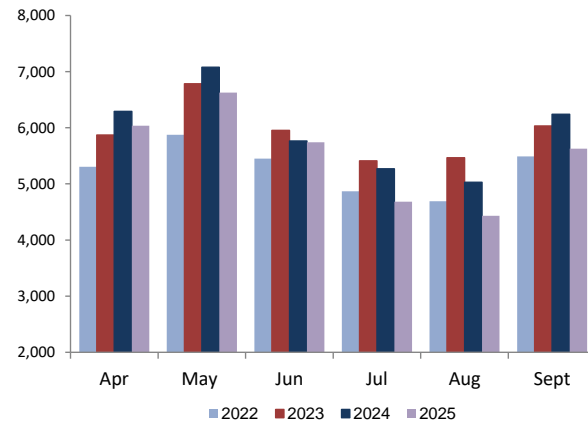
Total SCR Intakes

n = 14,018
September 2025

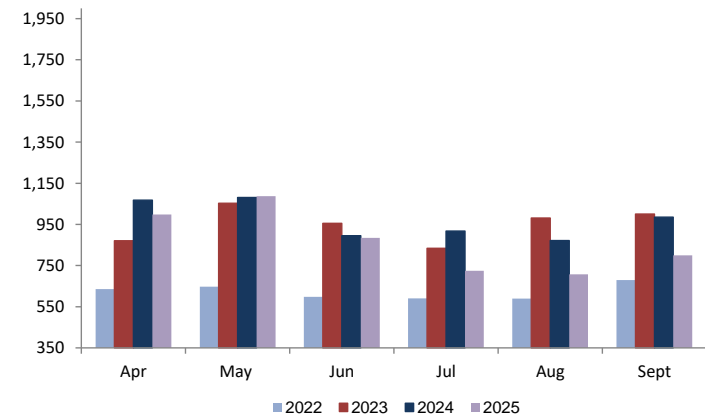


- CPS Reports
- CWS Referrals
- Non CPS/CWS Child Related Calls

CPS & CWS Referrals

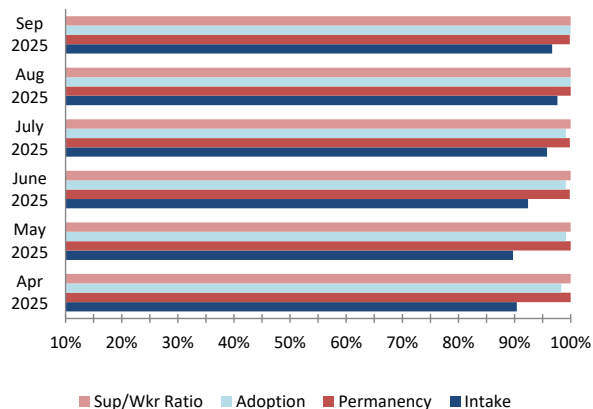


CWS Referrals Assigned to Local Offices

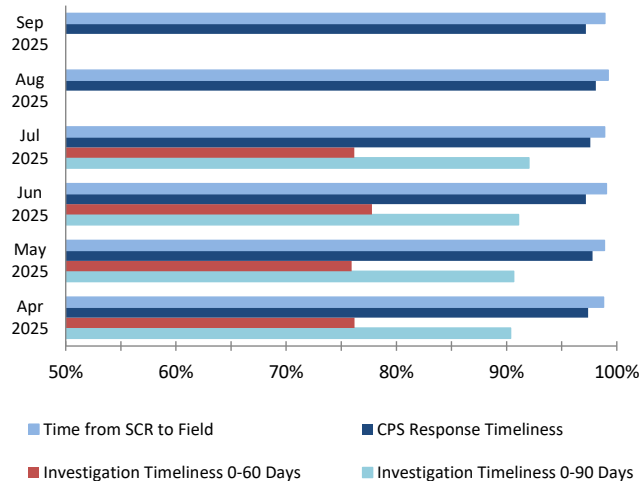


Section I: Child Protection & Permanency

**Caseload Compliance
(Individual Worker Level)**

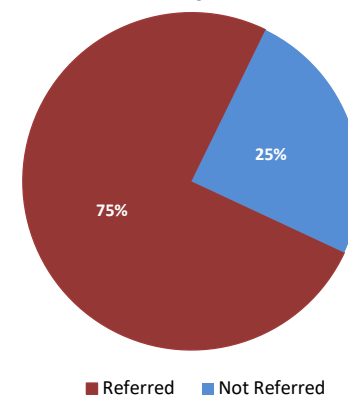


Response and Investigation Timeliness

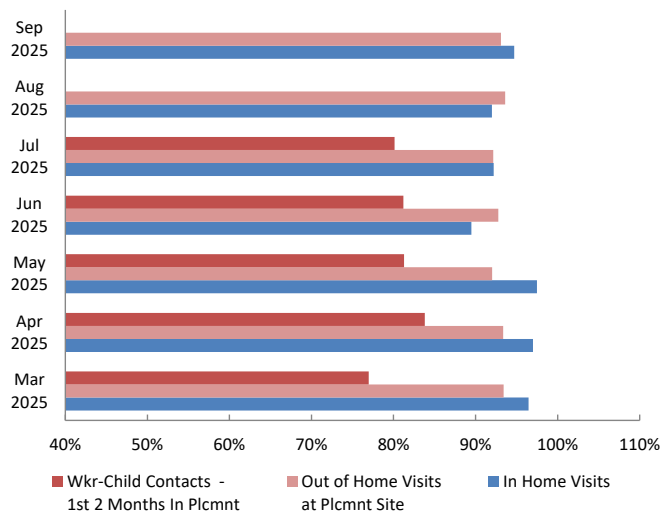


Referrals to Early Intervention

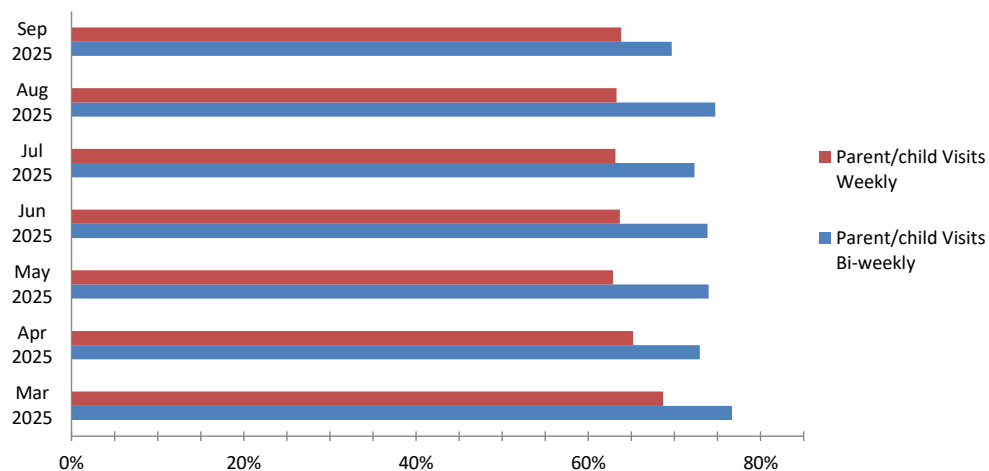
Oct 2024 - Sep 2025
n = 425



Worker - Child Visits

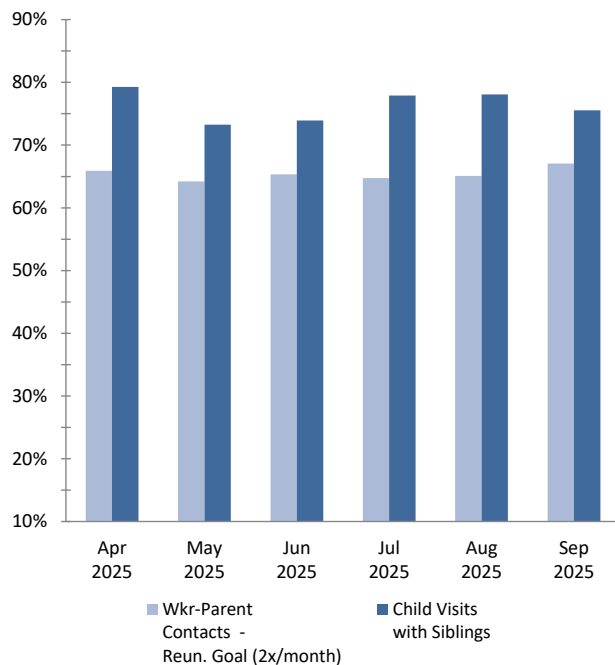


Parent - Child Visits

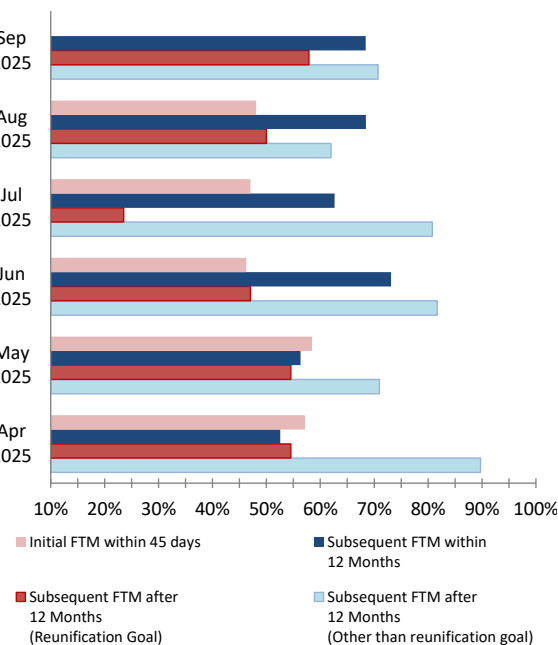


Section I: Child Protection & Permanency

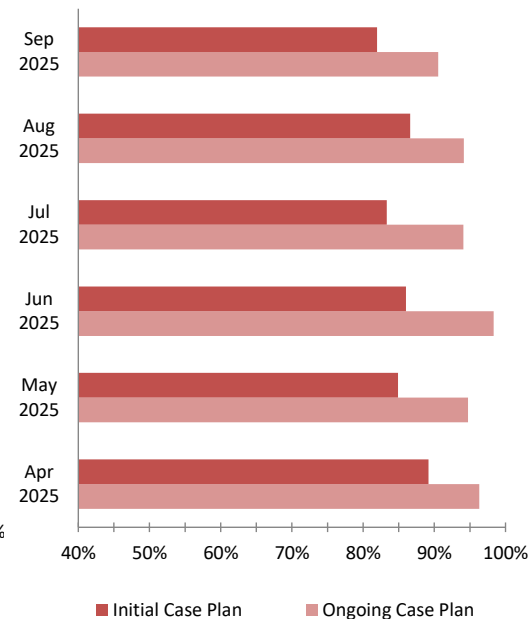
Worker- Parent Visits & Sibling Visits



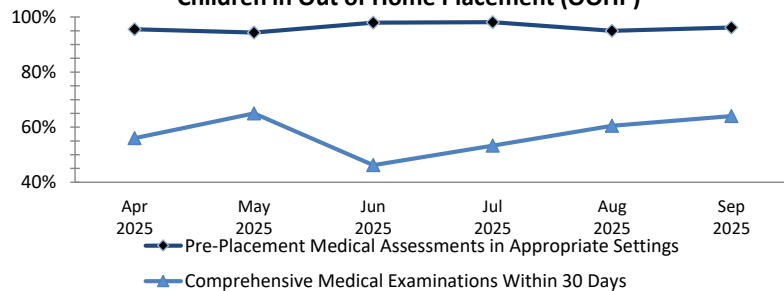
Initial & Subsequent Family Team Meetings



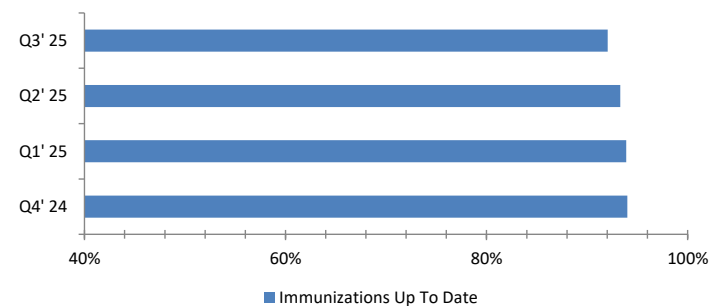
Initial & Ongoing Case Plans



Medical Assessments for
Children in Out of Home Placement (OOHP)



Immunizations for
Children in OOHP



Section II: Adolescent Services

OAS Quick Facts (September 2025)

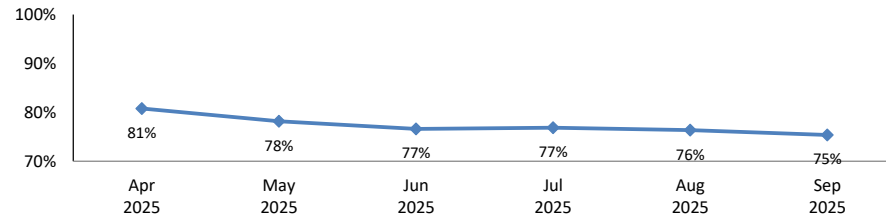
Youth 18-23

| | | | |
|---|---------|----|--------------|
| Youth 18-23 years old served by CP&P¹ | | | 1,626 |
| Youth served "In Home" living with a parent/relative or living independently² | | | 1,443 |
| Youth served "Out-of-Home" | | | 183 |
| Resource Family (non-Kin) | (36.6%) | 67 | |
| Resource Family Kinship | (19.1%) | 35 | |
| Congregate Care Setting | (26.2%) | 48 | |
| Independent Living | (17.5%) | 32 | |
| Public Institution | (01.0%) | 1 | |
| Youth Receiving Adoption or KLG Subsidy | | | 490 |

¹ The data includes all 18-21 year olds who are active participants in an open CP&P case as of the end of the month.

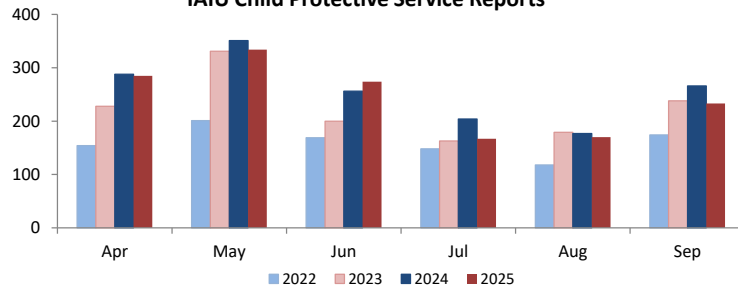
² The terms "out-of-home" and "in-home" may not be appropriate for all 18-21 year olds. Youth identified as "in-home" can either be residing with a parent/relative, or living independently. Any of these youth may be receiving services. These definitions are currently being reviewed to better understand how we capture DCF's work with this population. The goal of this ongoing work is to create three meaningful categories for 18-21 year olds 1) Youth in a formal out-of-home placement setting, 2) Youth that achieved permanency, and 3) Youth that never achieved permanency.

Completed Independent Living Assessments of Youth Ages 14-18 years

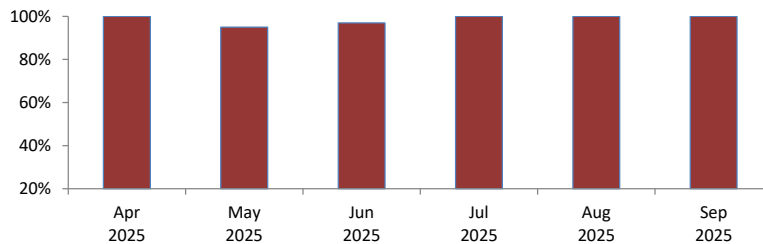


Section III: Institutional Abuse Investigation Unit

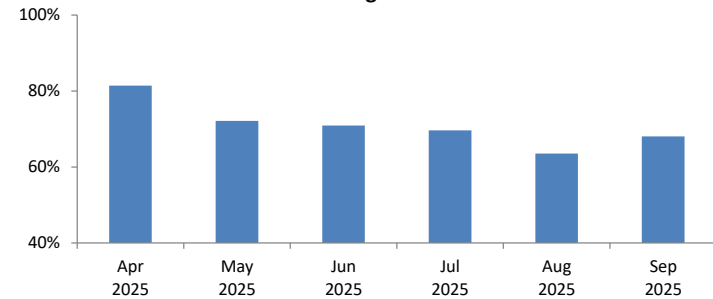
IAIU Child Protective Service Reports



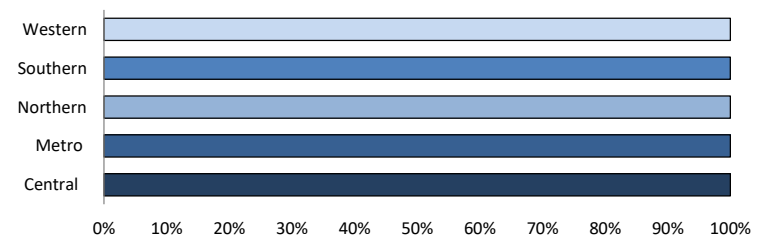
IAIU Caseload Report Statewide



IAIU Investigation Timeliness



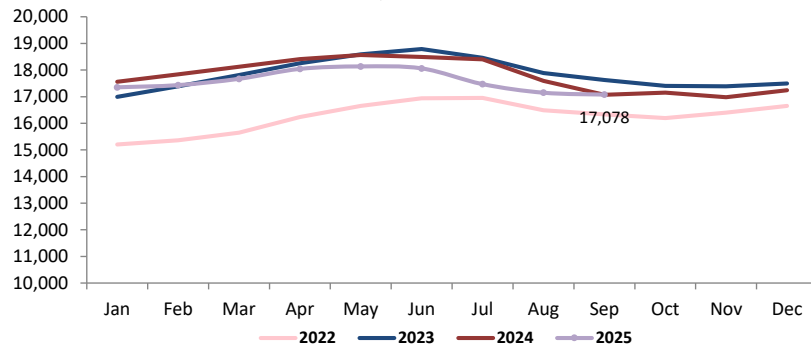
IAIU Caseload Report by Region September 2025



Section IV: Children's System of Care

Children in Care Management

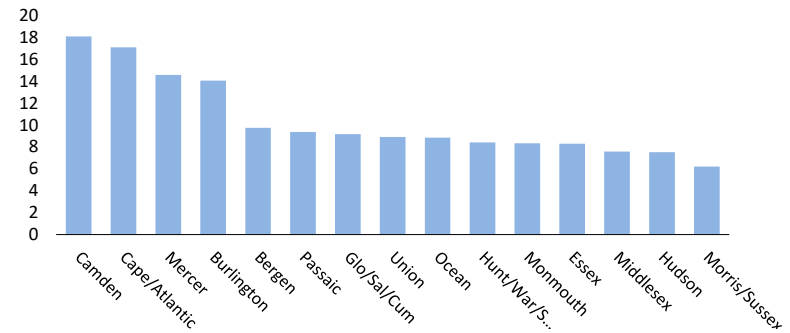
as of September 30th 2025



Rate of Children in Care Management by Service Area

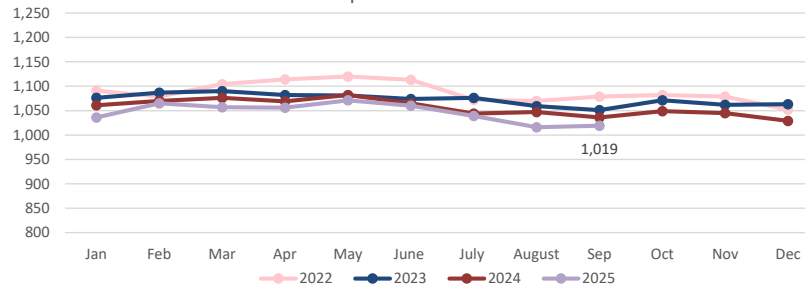
as of September 30th 2025

n=17,078



Children in Out of Home Treatment Settings

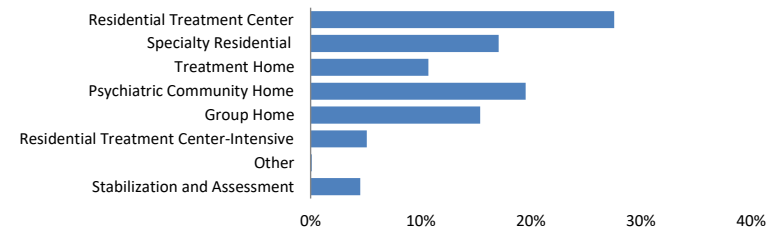
as of September 30th 2025



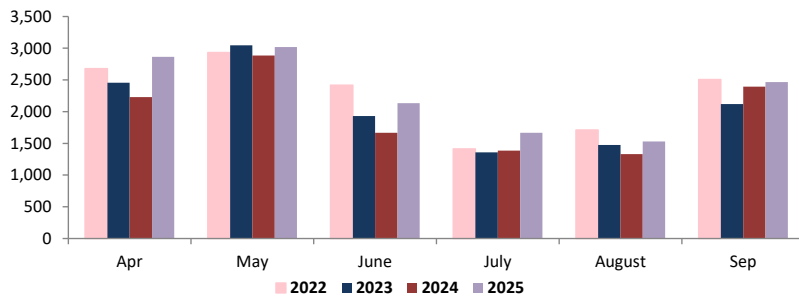
Children in Out-of-Home Treatment Settings

as of September 30th 2025

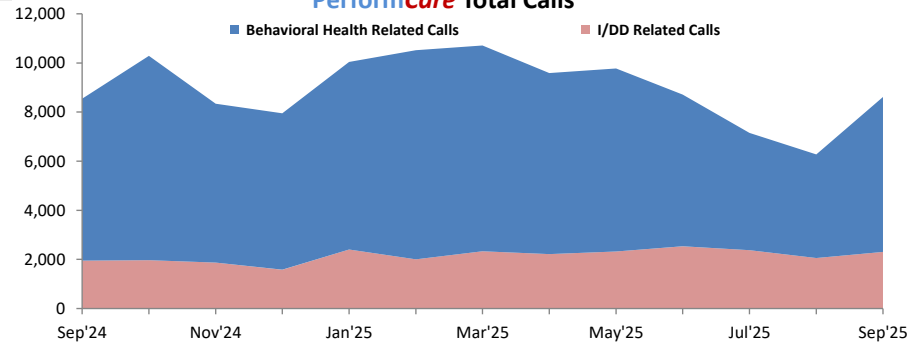
n= 1,019



Mobile Response Stabilization Services (MRSS) Dispatched

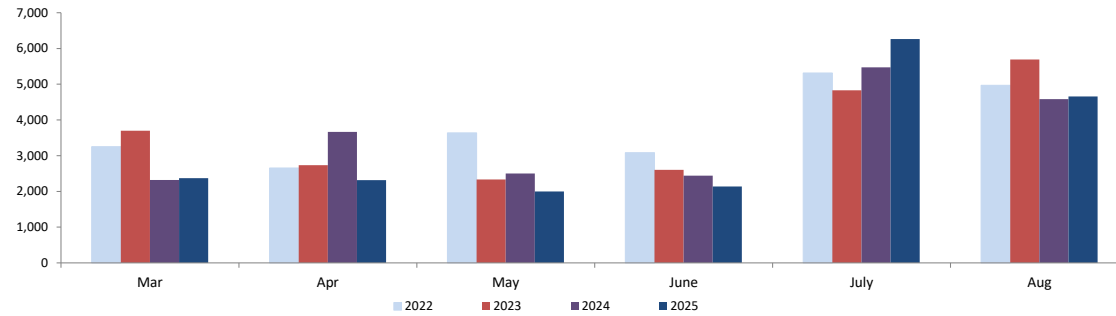


PerformCare Total Calls



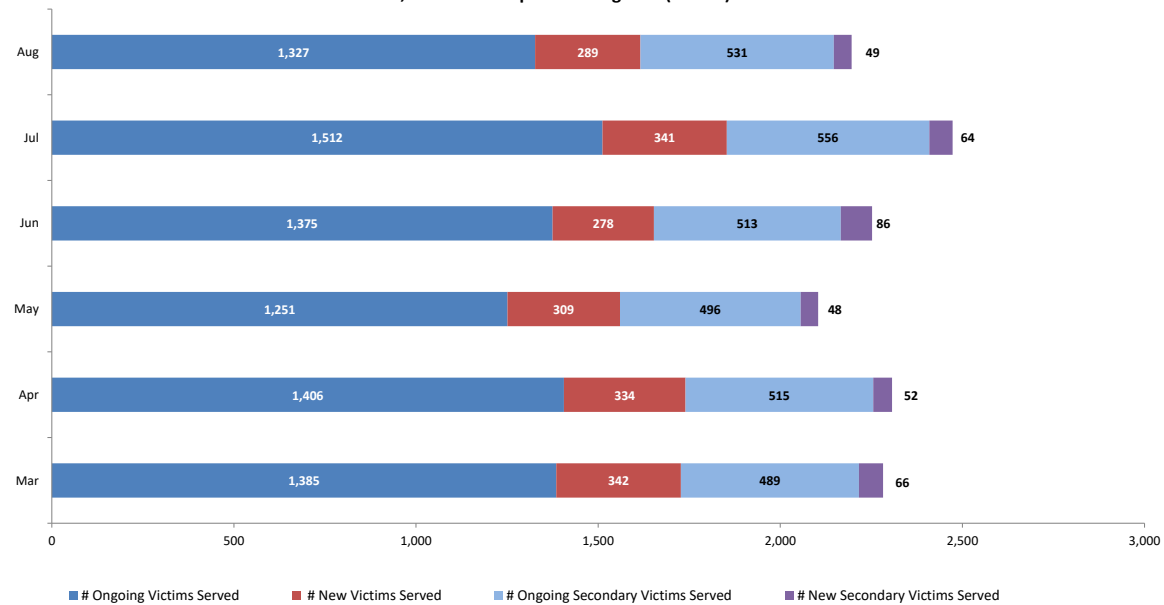
Section V: Family & Community Partnerships

Family Success Centers - Families Served



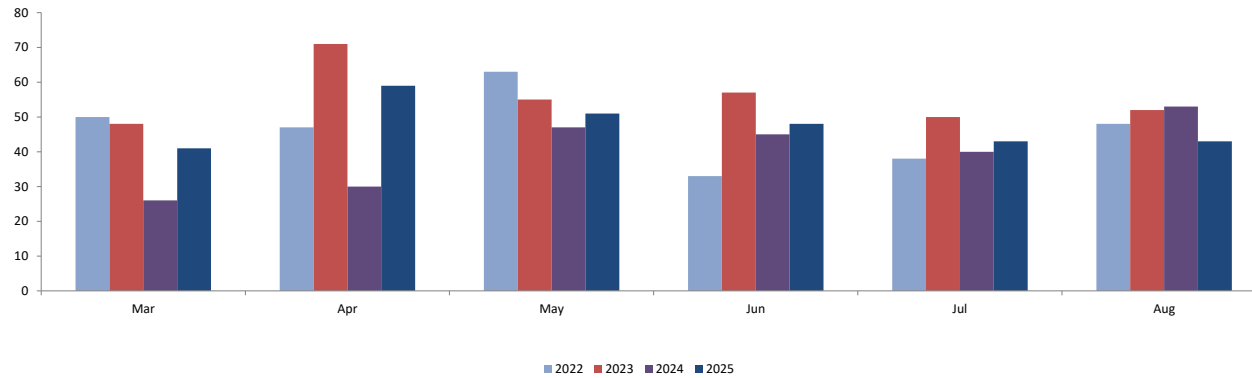
Section VI: Division on Women

Sexual Assault, Abuse and Rape Care Programs (SAARC)

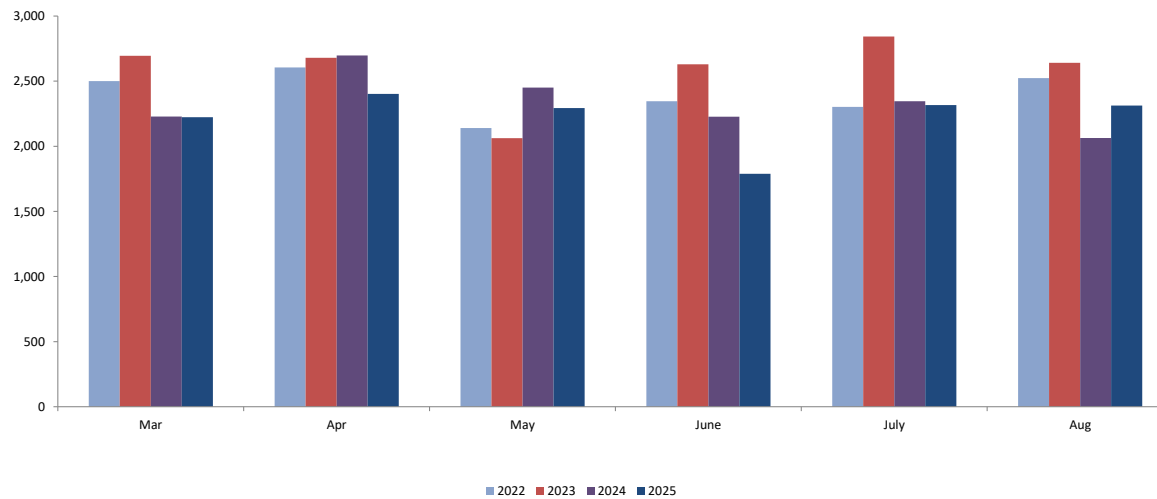


Section VI: Division on Women

**Residential Domestic Violence Programs:
Victims' Average Length of Stay (days)**



**Domestic Violence Services - Adults and Children
Admitted to Residential and Non-Residential Services
Total New Clients**



Worker and Office Caseloads by Worker Type and by Local Office - September 2025

| | <div><div></div> At or Above Statewide Performance</div> | | <div><div></div> Below Statewide Performance</div> | | | |
|------------------------|--|-----------------------------|--|-----------------------------|-----------------------|-----------------------------|
| Local Office | ¹ Intake | | ² Permanency | | ³ Adoption | |
| | Worker Compliance | Office Compliant? Yes/No | Worker Compliance | Office Compliant? Yes/No | Worker Compliance | Office Compliant? Yes/No |
| Atlantic East | 97% | Yes | 100% | Yes | 100% | Yes |
| Atlantic West | 95% | Yes | 100% | Yes | 100% | Yes |
| Bergen Central | 100% | Yes | 100% | Yes | 100% | Yes |
| Bergen South | 100% | Yes | 100% | Yes | 100% | Yes |
| Burlington East | 100% | Yes | 100% | Yes | 100% | Yes |
| Burlington West | 95% | Yes | 100% | Yes | 100% | Yes |
| Camden Central | 100% | Yes | 95% | Yes | 100% | Yes |
| Camden East | 96% | Yes | 100% | Yes | 100% | Yes |
| Camden North | 95% | Yes | 100% | Yes | 100% | Yes |
| Camden South | 95% | Yes | 100% | Yes | 100% | Yes |
| Cape May | 92% | Yes | 100% | Yes | 100% | Yes |
| Cumberland East | 100% | Yes | 100% | Yes | 100% | Yes |
| Cumberland West | 95% | Yes | 100% | Yes | 100% | Yes |
| Essex Central | 100% | Yes | 100% | Yes | 100% | Yes |
| Essex North | 73% | No | 100% | Yes | 100% | Yes |
| Essex South | 76% | No | 100% | Yes | 100% | Yes |
| Gloucester East | 100% | Yes | 100% | Yes | 100% | Yes |
| Gloucester West | 100% | Yes | 100% | Yes | 100% | Yes |
| Hudson Central | 100% | Yes | 100% | Yes | 100% | Yes |
| Hudson North | 100% | Yes | 100% | Yes | 100% | Yes |
| Hudson South | 94% | Yes | 100% | Yes | 100% | Yes |
| Hudson West | 100% | Yes | 100% | Yes | 100% | Yes |
| Hunterdon | 100% | Yes | 100% | Yes | 100% | Yes |
| Mercer North | 100% | Yes | 100% | Yes | 100% | Yes |
| Mercer South | 95% | Yes | 100% | Yes | 100% | Yes |
| Middlesex Central | 100% | Yes | 100% | Yes | 100% | Yes |
| Middlesex Coastal | 97% | Yes | 100% | Yes | 100% | Yes |
| Middlesex West | 100% | Yes | 100% | Yes | 100% | Yes |
| Monmouth North | 100% | Yes | 100% | Yes | 100% | Yes |
| Monmouth South | 100% | Yes | 100% | Yes | 100% | Yes |
| Morris East | 100% | Yes | 100% | Yes | 100% | Yes |
| Morris West | 94% | Yes | 100% | Yes | 100% | Yes |
| Newark Center City | 100% | Yes | 100% | Yes | 100% | Yes |
| Newark Northeast | 100% | Yes | 100% | Yes | 100% | Yes |
| Newark South | 76% | No | 100% | Yes | 100% | Yes |
| Ocean North | 100% | Yes | 100% | Yes | 100% | Yes |
| Ocean South | 97% | Yes | 100% | Yes | 100% | Yes |
| Passaic Central | 100% | Yes | 100% | Yes | 100% | Yes |
| Passaic North | 97% | Yes | 100% | Yes | 100% | Yes |
| Salem | 92% | Yes | 100% | Yes | 100% | Yes |
| Somerset | 100% | Yes | 100% | Yes | 100% | Yes |
| Sussex | 100% | Yes | 100% | Yes | 100% | Yes |
| Union Central | 100% | Yes | 100% | Yes | 100% | Yes |
| Union East | 100% | Yes | 100% | Yes | 100% | Yes |
| Union West | 100% | Yes | 100% | Yes | 100% | Yes |
| Warren | 81% | No | 100% | Yes | 100% | Yes |
| Statewide ⁴ | 97% | Yes | 100% | Yes | 100% | Yes |

1 Intake

- Intake worker compliance: % of workers with no more than 8 new intakes in the month, no more than 12 Primary families and no more than a total of 14 families.

- Office Compliance: % of offices that meet the caseload standards of no more than 8 new intakes and 12 total families.

2 Permanency

- Permanency worker compliance: % of workers who meet the caseload standards of no more than 15 families and 10 children in placement.

- Office Compliance: % of offices that meet the caseload standards of no more than 15 families and 10 children in placement.

3 Adoption

- Adoption worker compliance: % of adoption workers who meet the caseload standards of 15 or fewer children.

- Office Compliance: % of offices that meet the caseload standards of 15 or fewer children.

- Offices with blank data do not carry adoption caseloads, however adoption cases in those offices are handled by other offices in that area.

4 Statewide

- Performance is based on total workers in compliance for the month, not an average. Percentages are rounded to the whole number.

| CP&P Key Performance Indicators by Local Office - 6 Months View | | | | | | | | | | | | | | |
|--|---|---|--|--|---|--|---|------------------------|--|---|--|--|---|--|
| Local Office | CPS Investigations Completed w/ 60 Days | CPS Investigations Completed w/ 90 Days | Monthly Staff Visits w/Children in Placement | Visits w/Children in Placement 2x/Month for 2 Months | Visits with Parents of Children in Placement 2x/Month | Weekly Parent/Child Visits-Children with Goal of Reunification | Bi-weekly Parent-Child Visits-Children with Goal of Reunification | Monthly Sibling Visits | Initial Case Plans w/ 30 Days of Placement | 6 Months Review of Case Plans for Children in Placement | Initial Family Team Meetings w/ 45 days of Placement | 3 Family Team Meetings in the first 12 months of Placement | 3 Family Team Meetings after 12 months in Placement | 2 Family Team Meeting after 12 months in Placement |
| | | | | | | | | | | | | | | |
| | | | | | | | | | | | | | | |
| Atlantic East | 91% | 97% | 91% | 74% | 59% | 61% | 73% | 85% | 97% | 100% | 64% | 60% | 38% | 47% |
| Atlantic West | 82% | 91% | 97% | 81% | 72% | 76% | 83% | 81% | 100% | 97% | 83% | 89% | 67% | 60% |
| Bergen Central | 86% | 96% | 94% | 70% | 81% | 81% | 84% | 100% | 75% | 92% | 64% | 86% | 0% | 80% |
| Bergen South | 90% | 95% | 96% | 92% | 78% | 90% | 89% | 95% | 44% | 98% | 44% | 100% | | 100% |
| Burlington East | 71% | 92% | 96% | 66% | 67% | 62% | 78% | 88% | 84% | 95% | 39% | 27% | 0% | 88% |
| Burlington West | 73% | 91% | 90% | 59% | 51% | 59% | 72% | 50% | 79% | 90% | 19% | 0% | 0% | 22% |
| Camden Central | 71% | 85% | 83% | 72% | 65% | 58% | 70% | 89% | 66% | 80% | 16% | 38% | 50% | 38% |
| Camden East | 60% | 85% | 91% | 86% | 70% | 47% | 76% | 82% | 87% | 98% | 41% | 95% | 100% | 100% |
| Camden North | 63% | 83% | 93% | 77% | 80% | 65% | 84% | 44% | 92% | 92% | 57% | 60% | | 100% |
| Camden South | 70% | 97% | 93% | 84% | 74% | 70% | 77% | 71% | 75% | 92% | 43% | 71% | 0% | 89% |
| Cape May | 72% | 87% | 97% | 88% | 66% | 54% | 53% | 77% | 88% | 100% | 56% | 75% | | 90% |
| Cumberland East | 72% | 92% | 92% | 100% | 89% | 95% | 91% | 96% | 100% | 100% | 62% | 80% | | 100% |
| Cumberland West | 64% | 90% | 96% | 94% | 79% | 64% | 84% | 83% | 100% | 100% | 100% | 100% | 100% | 100% |
| Essex Central | 76% | 89% | 92% | 78% | 52% | 21% | 46% | 71% | 95% | 100% | 33% | 100% | 0% | 0% |
| Essex North | 69% | 85% | 97% | 92% | 23% | 13% | 25% | 100% | 100% | 100% | 0% | 33% | 0% | 80% |
| Essex South | 71% | 84% | 90% | 73% | 24% | 25% | 34% | 69% | 100% | 90% | 25% | 19% | 0% | 47% |
| Gloucester East | 96% | 98% | 92% | 92% | 60% | 68% | 78% | 89% | 76% | 98% | 27% | 50% | 75% | 100% |
| Gloucester West | 55% | 76% | 98% | 85% | 83% | 87% | 85% | 92% | 89% | 96% | 40% | 90% | 50% | 69% |
| Hudson Central | 68% | 87% | 98% | 93% | 88% | 74% | 89% | 89% | 100% | 100% | 50% | 80% | 33% | 100% |
| Hudson North | 83% | 95% | 92% | 93% | 75% | 90% | 92% | 100% | 100% | 100% | 100% | 100% | | 100% |
| Hudson South | 83% | 94% | 98% | 93% | 75% | 53% | 66% | 95% | 100% | 100% | 33% | 100% | | 75% |
| Hudson West | 89% | 97% | 94% | 65% | 64% | 43% | 63% | 88% | 78% | 84% | 25% | 63% | 0% | 44% |
| Hunterdon | 94% | 99% | 97% | 100% | 94% | 92% | 97% | 100% | 100% | 100% | 0% | 100% | | 100% |
| Mercer North | 68% | 88% | 87% | 56% | 51% | 38% | 52% | 88% | 76% | 32% | 45% | 36% | 78% | 59% |
| Mercer South | 83% | 95% | 91% | 87% | 66% | 50% | 73% | 82% | 78% | 91% | 16% | 36% | 43% | 73% |
| Middlesex Central | 66% | 89% | 98% | 85% | 76% | 80% | 87% | 82% | 77% | 80% | 67% | 56% | | 100% |
| Middlesex Coastal | 79% | 94% | 95% | 71% | 93% | 97% | 79% | 79% | 56% | 94% | 44% | 50% | 75% | 90% |
| Middlesex West | 69% | 85% | 95% | 93% | 68% | 70% | 76% | 45% | 79% | 100% | 91% | 100% | 100% | 75% |
| Monmouth North | 97% | 99% | 99% | 70% | 90% | 99% | 91% | 94% | 100% | 99% | 100% | 64% | | 100% |
| Monmouth South | 86% | 98% | 98% | 77% | 85% | 85% | 87% | 99% | 100% | 100% | 38% | 86% | 100% | 93% |
| Morris East | 82% | 92% | 97% | 93% | 97% | 100% | 88% | 100% | 100% | 100% | 80% | 100% | 100% | 100% |
| Morris West | 84% | 95% | 99% | 100% | 96% | 100% | 100% | 85% | 100% | 100% | 100% | 100% | | 100% |
| Newark Center City | 63% | 87% | 97% | 100% | 79% | 45% | 60% | 89% | 91% | 100% | 37% | 100% | 83% | 78% |
| Newark Northeast | 61% | 80% | 86% | 53% | 25% | 47% | 63% | 90% | 100% | 99% | 0% | 0% | 20% | 40% |
| Newark South | 40% | 70% | 91% | | 50% | 51% | 69% | 94% | | 96% | 60% | 33% | 100% | 100% |
| Ocean North | 86% | 93% | 97% | 83% | 82% | 66% | 81% | 90% | 100% | 92% | 79% | 64% | | 100% |
| Ocean South | 91% | 97% | 95% | 95% | 87% | 77% | 85% | 100% | 100% | 97% | 74% | 100% | 125% | 82% |
| Passaic Central | 84% | 95% | 97% | 94% | 95% | 99% | 85% | 89% | 97% | 100% | 100% | 100% | 100% | 100% |
| Passaic North | 92% | 97% | 95% | 100% | 98% | 100% | 88% | 94% | 100% | 100% | 76% | 100% | 150% | 100% |
| Salem | 63% | 89% | 91% | 93% | 80% | 88% | 89% | 92% | 100% | 100% | 82% | 100% | | 100% |
| Somerset | 74% | 94% | 98% | 90% | 79% | 83% | 86% | 100% | 100% | 97% | 100% | 100% | 0% | 0% |
| Sussex | 87% | 98% | 99% | 100% | 94% | 100% | 89% | 100% | 100% | 100% | 100% | 100% | | 100% |
| Union Central | 80% | 95% | 97% | 82% | 79% | 98% | 90% | 100% | 80% | 100% | 100% | 100% | | 100% |
| Union East | 87% | 97% | 99% | 100% | 92% | 100% | 79% | 83% | 100% | 100% | 100% | 100% | 100% | 67% |
| Union West | 74% | 95% | 94% | 93% | 41% | 49% | 58% | 76% | 73% | 98% | 38% | 60% | 100% | 56% |
| Warren | 47% | 74% | 88% | 83% | 75% | 71% | 75% | 0% | 75% | 92% | 0% | 56% | | 67% |
| Statewide | 77% | 91% | 93% | 82% | 69% | 64% | 75% | 86% | 89% | 95% | 52% | 63% | 45% | 76% |
| Blank cells mean that the office did not have any children eligible for that measure during that period. | | | | | | | | | | | | | | |
| These data points are preliminary and subject to change based on user data entry. | | | | | | | | | | | | | | |
| Description of the Measure | | | | | | | | | | | | Time Period Analyzed | | |
| CPS Investigations Completed w/ 60 Days | | | | | | | | | | | | February 25 - July 25 | | |
| CPS Investigations Completed w/ 90 Days | | | | | | | | | | | | February 25 - July 25 | | |
| Monthly Staff Visits w/Children in Placement | | | | | | | | | | | | April 25 - September 25 | | |
| Visits w/Children in Placement 2x/Month for 2 Months | | | | | | | | | | | | February 25 - July 25 | | |
| Visits with Parents of Children in Placement 2x/Month | | | | | | | | | | | | April 25 - September 25 | | |
| Weekly Parent/Child Visits-Children with Goal of Reunification | | | | | | | | | | | | 08/23/2025 - 09/27/2025 | | |
| Bi-weekly Parent-Child Visits-Children with Goal of Reunification | | | | | | | | | | | | April 25 - September 25 | | |
| Monthly Sibling Visits | | | | | | | | | | | | April 25 - September 25 | | |
| Initial Case Plans w/ 30 Days of Placement | | | | | | | | | | | | April 25 - September 25 | | |
| 6 Months Review of Case Plans for Children in Placement | | | | | | | | | | | | April 25 - September 25 | | |
| Initial Family Team Meetings w/ 45 days of Placement | | | | | | | | | | | | March 25 - August 25 | | |
| 3 Family Team Meetings in the first 12 months of Placement | | | | | | | | | | | | April 25 - September 25 | | |
| 3 Family Team Meetings after 12 months in Placement | | | | | | | | | | | | April 25 - September 25 | | |
| 2 Family Team Meeting after 12 months in Placement | | | | | | | | | | | | April 25 - September 25 | | |