



NEW JERSEY DEPARTMENT OF
CHILDREN AND FAMILIES

Commissioner's Monthly Report December-24

Christine Beyer
Commissioner

Monthly Report

Table of Contents

TABLE OF CONTENTS	2
KEY PERFORMANCE INDICATORS	3
DCF AT A GLANCE - DASHBOARD	4
SECTION I: CHILD PROTECTION & PERMANENCY	5-7
SECTION II: ADOLESCENT SERVICES	8
SECTION III: INSTITUTIONAL ABUSE INVESTIGATION UNIT	8
SECTION IV: CHILDREN'S SYSTEM OF CARE	9
SECTION V: FAMILY & COMMUNITY PARTNERSHIPS	10
SECTION VI: DIVISION ON WOMEN	10-11
ADDENDUM 1: CASELOADS	12
ADDENDUM 2: CP&P KEY PERFORMANCE INDICATORS BY LOCAL OFFICE	13

¹ Key Performance Indicators On or About October 31 st , 2024				
	Observed Month	Rolling 12 Month Average	Performance	% Difference
Investigation Timeliness CP&P 60 Days	August '24	82%	84%	2%
Investigation Timeliness CP&P 90 Days	August '24	94%	94%	0%
CW Visits Child 2x/Month for first 2 Months in Placement	August '24	85%	84%	-1%
CW Visits Child Monthly (at placement site) ³	October '24	93%	92%	-1%
CW Visits with Parent 2x/Month - Goal of Reunification	October '24	65%	70%	5%
Parent-Child Weekly Visit ²	October '24	67%	65%	-2%
Parent-Child Visits Bi-weekly	October '24	72%	74%	2%
Child Visit with Siblings	October '24	85%	83%	-2%
Initial Case Plans	October '24	89%	91%	2%
Ongoing Case Plans	October '24	96%	95%	-1%
Initial FTMs within 45 days	September '24	67%	61%	-6%
Subsequent FTMs within 12 Months	October '24	69%	59%	-10%
Subsequent FTMs after 12 Months - Reunification Goal (n=18)	October '24	69%	72%	3%
Subsequent FTMs after 12 Months - Other than Reunification Goal	October '24	84%	83%	-1%
Ind. Living Assessments 14-18 Years Old	October '24	82%	83%	1%
Caseloads: Intake	October '24	91%	95%	4%
Caseloads: Permanency	October '24	100%	100%	0%
Caseloads: Adoption	October '24	99%	100%	1%
Supervisor Worker Ratio	October '24	100%	100%	0%
Investigation Timeliness IAIU 60 Days	October '24	71%	77%	6%
Caseloads: IAIU Investigators	October '24	99%	100%	1%
<div> <div></div> Performance is similar to or above the 12 months rolling average </div> <div> <div></div> Performance is below the 12 months rolling average </div>				

¹ In certain measures, performance excludes appropriate instances as per policy where events such as visits or family team meetings did not occur.

² Performance for Parent-Child Weekly Visits is calculated based on the average number of children with weekly visits over the average total number of eligible children for weekly visits.

³ Caseworker visits with Children in Placement (all locations) **October 2024: 97%.**



DCF At A Glance Dashboard

On or About October 31st, 2024

DCF At A Glance		CSOC ⁴ Quick Facts	
DCF: Total Children Served in the Month ¹	70,679	Youth Open with CSOC ⁵ (unduplicated count)	37,804
CP&P: Children/Youth Served	32,875	DD Eligible Children (unduplicated count)	13,902
Children Under 18	31,060	MRSS: Dispatches in the month	2,853
OOH Setting (<18)	2,871	MRSS: Interventions ⁶ (June 2024)	1,633
In-Home Setting (<18)	28,189	Remained in Same Living Situation	96%
Youth 18-21	1,815	Unable to Stabilize in home	1%
OOH Setting (>18)	195	Unknown (Plan not received)	3%
In-Home Setting (>18)	1,620	Care Management: Children Served	17,154
FCP: Total Clients Served ² (September)	6,849	OOH Settings : Children Served ⁷ (BH, I/DD, and SU)	1,049
DOW: Total Clients Served (September) (Excludes Displaced Homemaker)	4,244	Behavioral Health Placed out of State	0
DCF: Families Served in the Month ³	23,251	Intellectual /Developmental Disabilities Placed out of State	39
CP&P	16,564	PerformCare Calls	10,291
FCP (Family Success Centers & Home Visiting) (September)	6,687	DD Related Calls	1,967

CP&P Quick Facts		FCP & DoW Quick Facts ⁹	
Hotline Referrals	15,540	FSCs: Families Served (September 2024)	3,241
CPS Reports	37%	Home Visiting: Families Served (September 2024)	3,446
CWS Referrals	7%	SBYSP: Students Receiving Evidence-Based Prevention Programs (Sept 2024)	162
Number of Human Trafficking Referrals ⁸ (October 2024)	8		
Response Timeliness	97%	DV Services: Clients Served (September 2024)	2,284
Monthly Staff Contacts/Children OOH-Placement Site	92%	Residential	14%
Entries to Care	136	Non-Residential	86%
Exits from Care	139		
Subsidized Adoptions/KLG (Includes Subsidized Adoptions and subsidized KLGs)	11,894	SAARC: Clients Served (September 2024)	1,960

¹ Some children may be served by both CP&P and CSOC and are over-represented in the final count of children served in the month.

² FCP measures clients served in SBYSP and DV Services. Since Family Success Centers and Home Visitation programs report data in terms of families served, each family is assumed to have at least one client.

³ Families served by DCF includes CP&P families and FCP families. FCP families served data has a one month lag.

⁴ CSOC Children may receive multiple services and are counted multiple times.

⁵ The definition for "Youth Open with CSOC" reflects youth who are involved and eligible to receive services through CSOC.

⁶ Mobile Response Interventions has a five month lag to allow for the data to settle for accurate reporting.

⁷ As of October 2022, the CSOC OOH sections will now include all CSOC Out of Home Treatment Settings (Behavioral Health, Intellectual/Developmentally Disabled, and Substance Use). This includes updating the totals reported, a new 3-year OOH trend report, and a monthly OOH report grouped by similar treatment settings.

⁸ The cumulative number of human trafficking referrals between **November 2013 and October 2024 was 1,462**. This figure could change depending on when the data is extracted.

⁹ FCP quick facts are based on new families for FSCs, but both new and ongoing clients for Home Visiting and SBYSP. DoW quick facts are based on new clients for DV Services, but both new and ongoing clients served for SAARC, Displaced Homemakers and Rape Prevention Education.

Note: OOH Behavioral Health Settings: Children Served - Excludes Youth in Detention Alternatives and Diagnostic Settings.

Effective June 2017, All DoW data is reported Monthly except for Residential DV shelters and Unmet Needs Data.

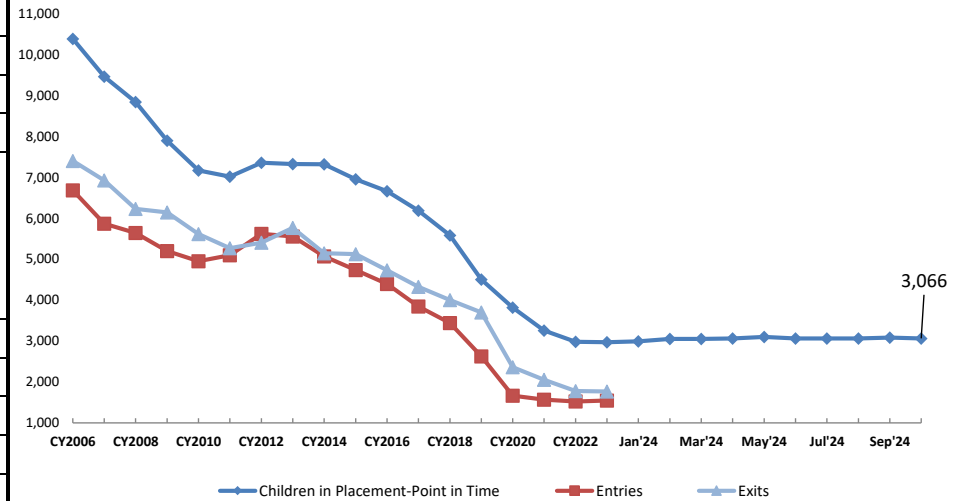
Note: Due to system upgrades within DCF, Displaced Homemaker data will not be available beginning November 2021. DCF will resume reporting on these data after the new systems have been updated with these data.

Section I: Child Protection & Permanency

CP&P Quick Facts

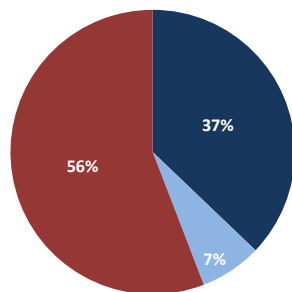
	As of Oct 31st 2024	Δ from Oct '23
Families Under CP&P Supervision	16,564	-1%
Children Under CP&P Supervision	32,875	0%
Children Receiving CP&P In-Home Services	29,809	0%
Children in CP&P Out-of-Home Placement		
Resource Family (non-Kin)	41% 1,251	
Resource Family Kinship	46% 1,420	
Group and Residential	11% 345	
Independent Living	2% 50	
Total	3,066	2%
Children Legally Free for Adoption (Excludes TPR Appeals)	454	-4%
Finalized Adoptions to date (CY2024) - As of 10/31/2024	273	-9%
Children in Subsidized Kinship Legal Guardianship	1,237	0%
Children in Subsidized Adoptions	10,657	-7%
Entries to Care	136	-2%
Exits from Care	139	-12%

Children in Out-of-Home Placement:
Annual Entries, Exits and Monthly Point in Time Children in Placement



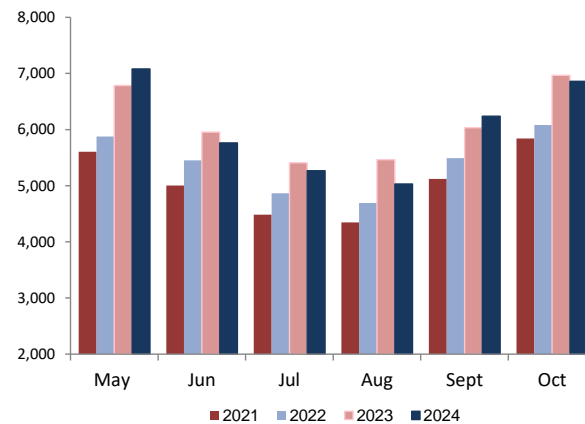
Total SCR Intakes

n = 15,540
October 2024

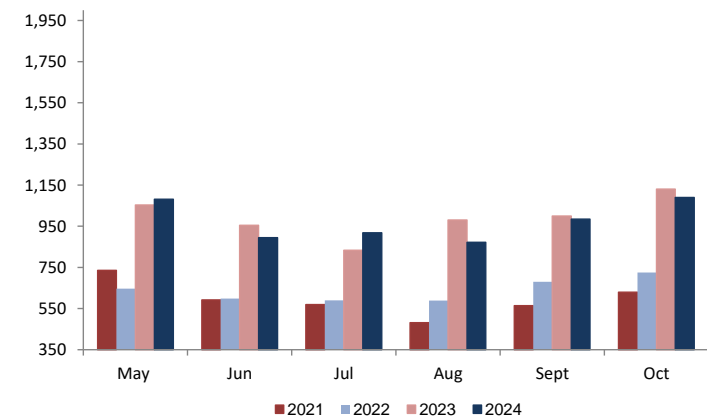


- CPS Reports
- CWS Referrals
- Non CPS/CWS Child Related Calls

CPS & CWS Referrals

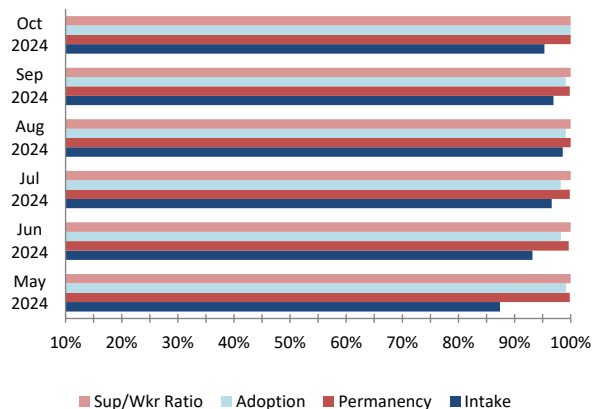


CWS Referrals Assigned to Local Offices

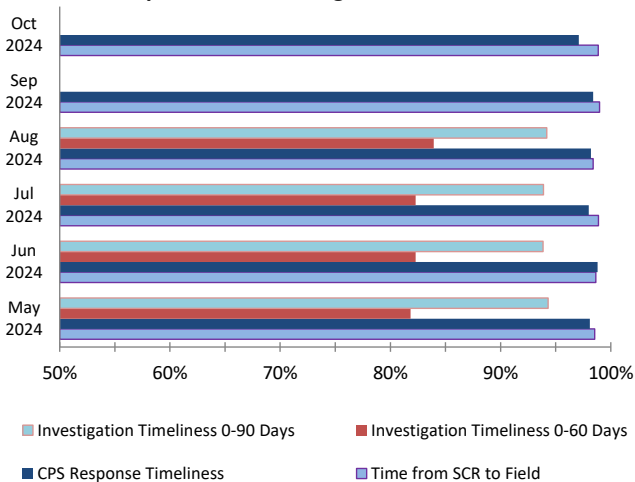


Section I: Child Protection & Permanency

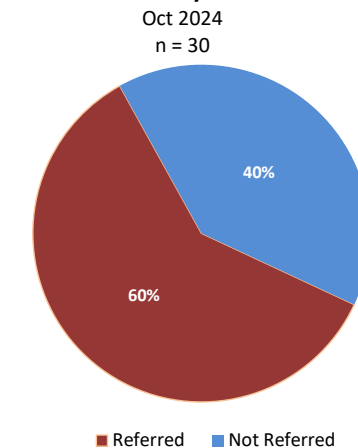
**Caseload Compliance
(Individual Worker Level)**



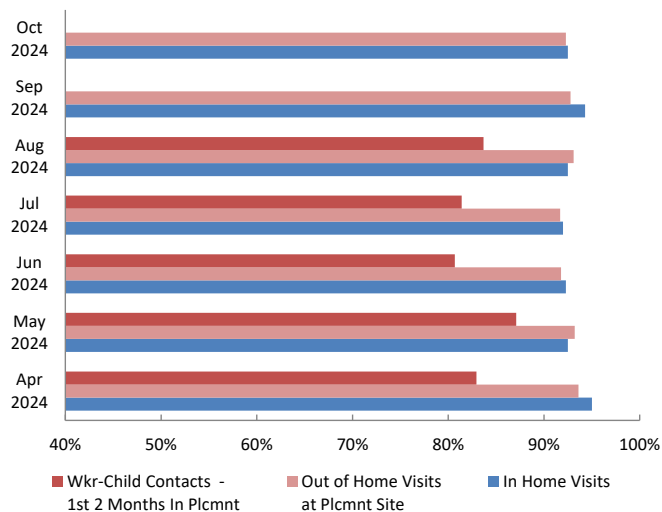
Response and Investigation Timeliness



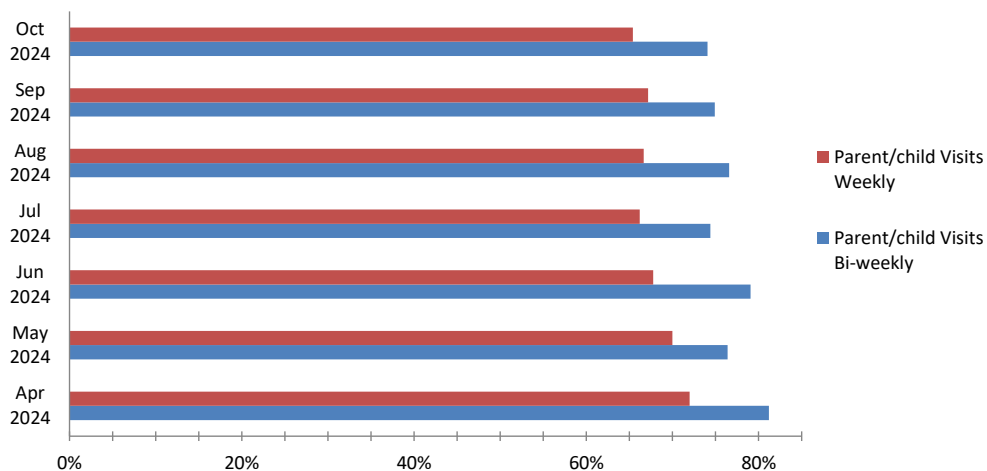
Referrals to Early Intervention



Worker - Child Visits

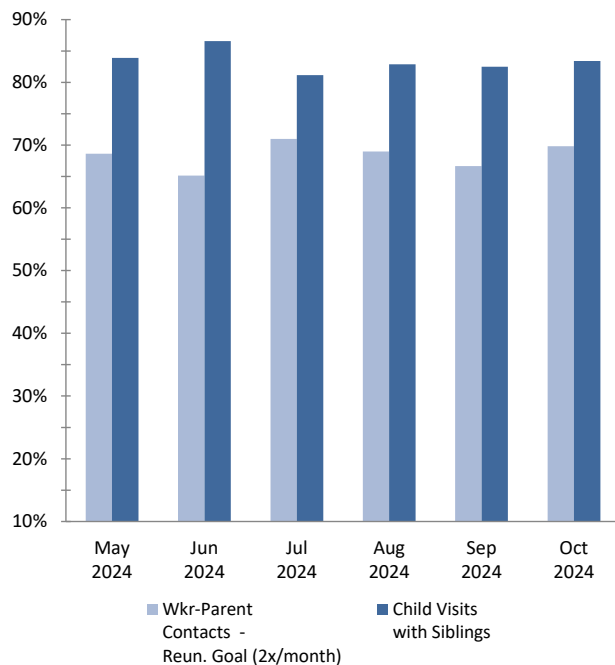


Parent - Child Visits

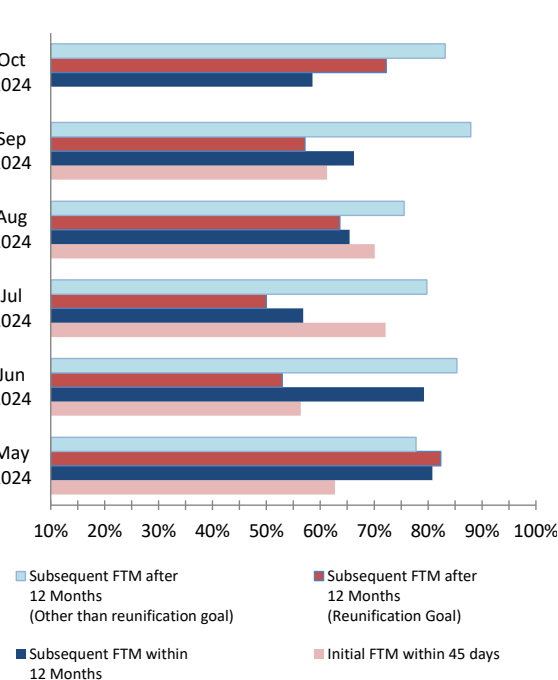


Section I: Child Protection & Permanency

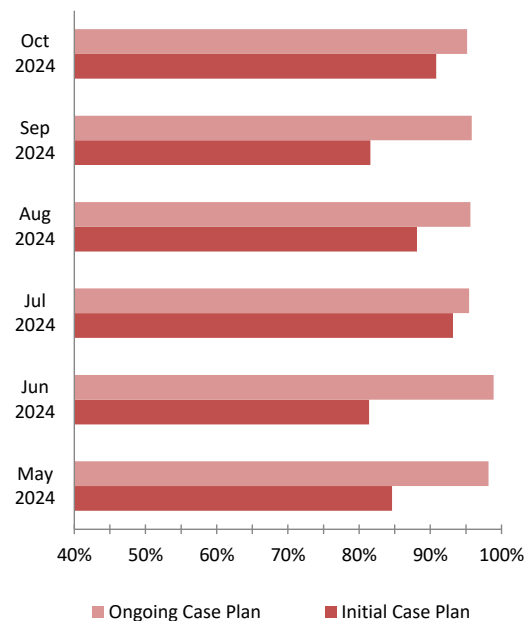
Worker- Parent Visits & Sibling Visits



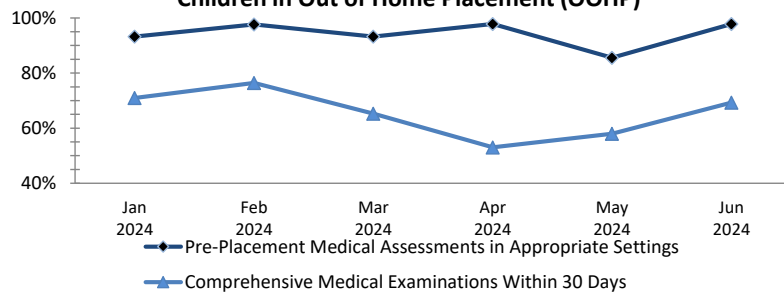
Initial & Subsequent Family Team Meetings



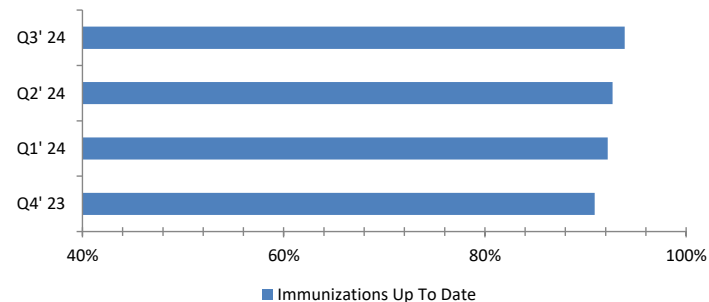
Initial & Ongoing Case Plans



Medical Assessments for
Children in Out of Home Placement (OOHP)



Immunizations for
Children in OOHP



Section II: Adolescent Services

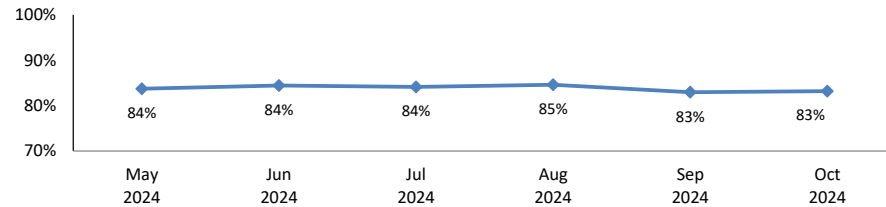
OAS Quick Facts (October 2024)
Youth 18-23

Youth 18-23 years old served by CP&P¹	1,815
Youth served "In Home" living with a parent/relative or living independently²	1,620
Youth served "Out-of-Home"	
Resource Family (non-Kin) (36.9%)	72
Resource Family Kinship (12.8%)	25
Congregate Care Setting (27.2%)	53
Independent Living (23.1%)	45
Youth Receiving Adoption or KLG Subsidy	473

¹ The data includes all 18-21 year olds who are active participants in an open CP&P case as of the end of the month.

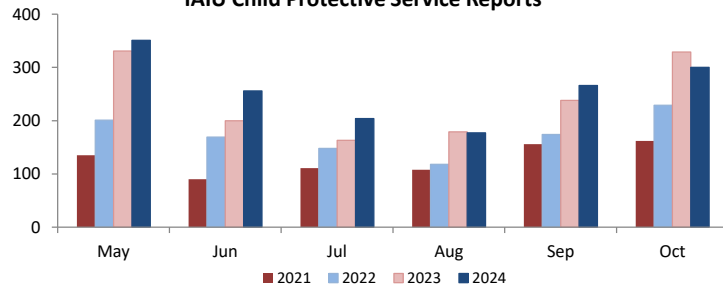
² The terms "out-of-home" and "in-home" may not be appropriate for all 18-21 year olds. Youth identified as "in-home" can either be residing with a parent/relative, or living independently. Any of these youth may be receiving services. These definitions are currently being reviewed to better understand how we capture DCF's work with this population. The goal of this ongoing work is to create three meaningful categories for 18-21 year olds 1) Youth in a formal out-of-home placement setting, 2) Youth that achieved permanency, and 3) Youth that never achieved permanency.

Completed Independent Living Assessments
of Youth Ages 14-18 years



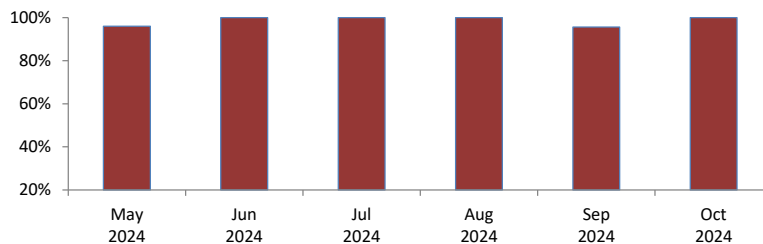
Section III: Institutional Abuse Investigation Unit

IAIU Child Protective Service Reports

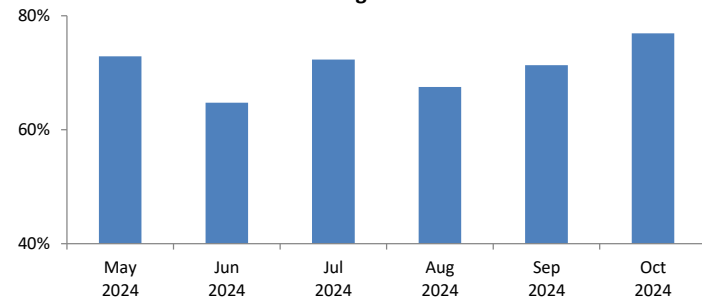


IAIU Caseload Report
Statewide

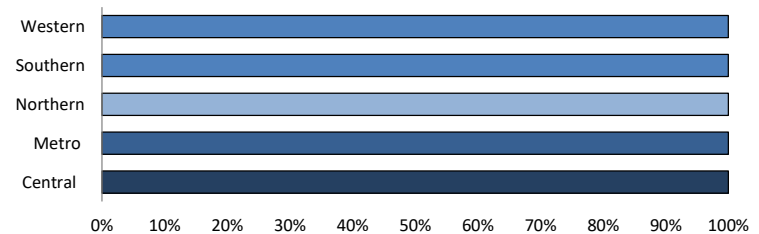
No more than 8 new investigations and 12 cases/month



IAIU Investigation Timeliness



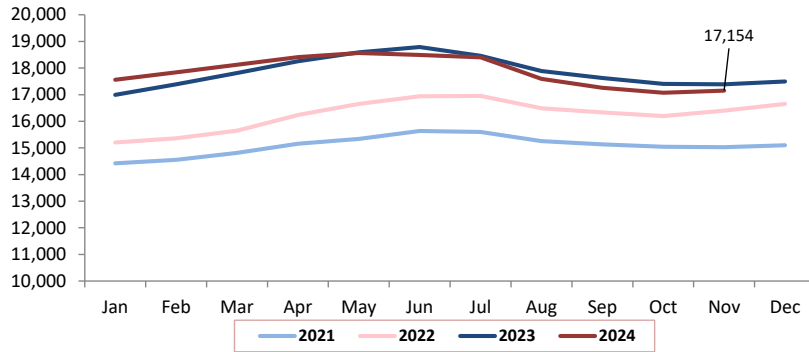
IAIU Caseload Report by Region
October 2024



Section IV: Children's System of Care

Children in Care Management

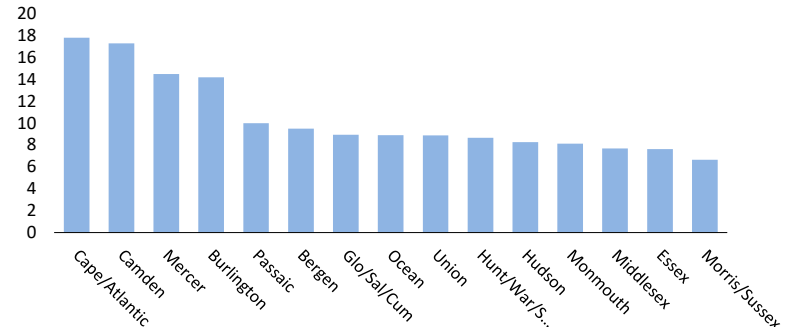
as of October 31st 2024



Rate of Children in Care Management by Service Area

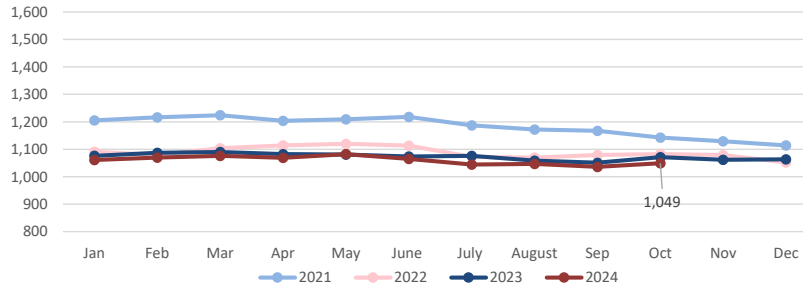
as of October 31st 2024

n=17,154



Children in Out of Home Treatment Settings

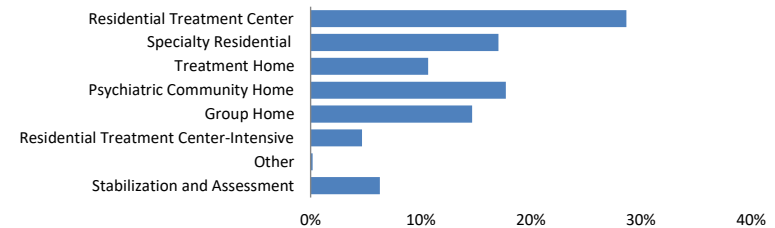
as of October 31st 2024



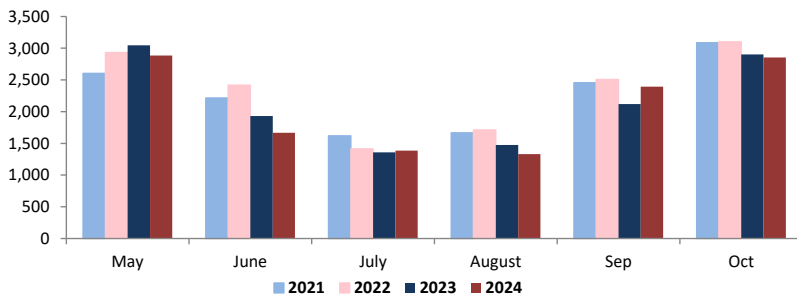
Children in Out-of-Home Treatment Settings

as of October 31st 2024

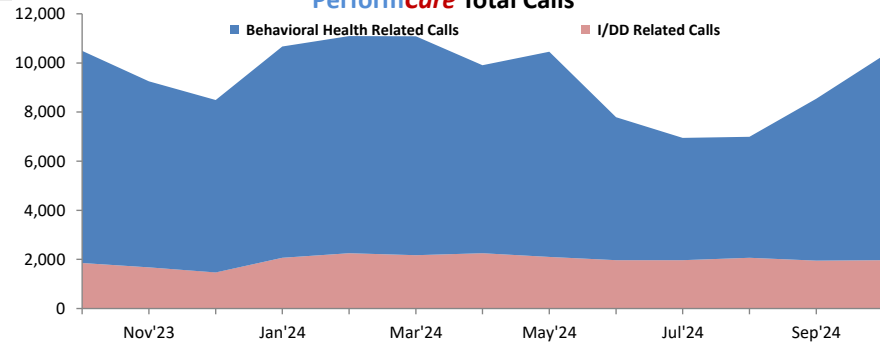
n= 1,049



Mobile Response Stabilization Services (MRSS) Dispatched

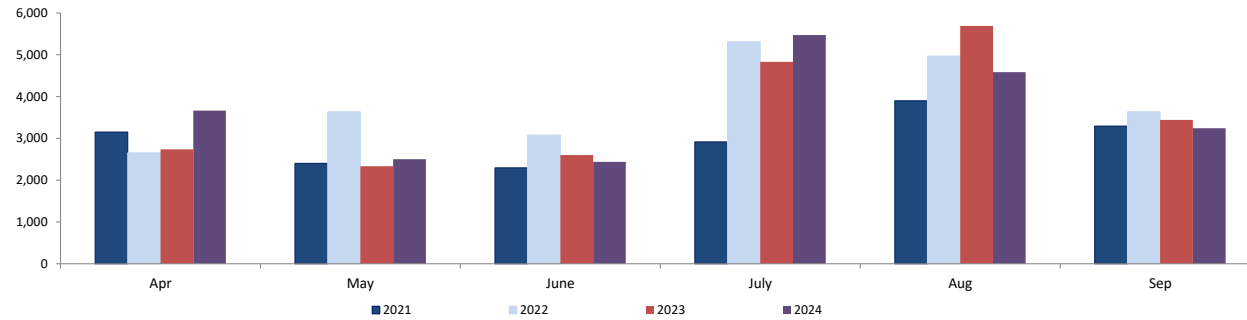


PerformCare Total Calls



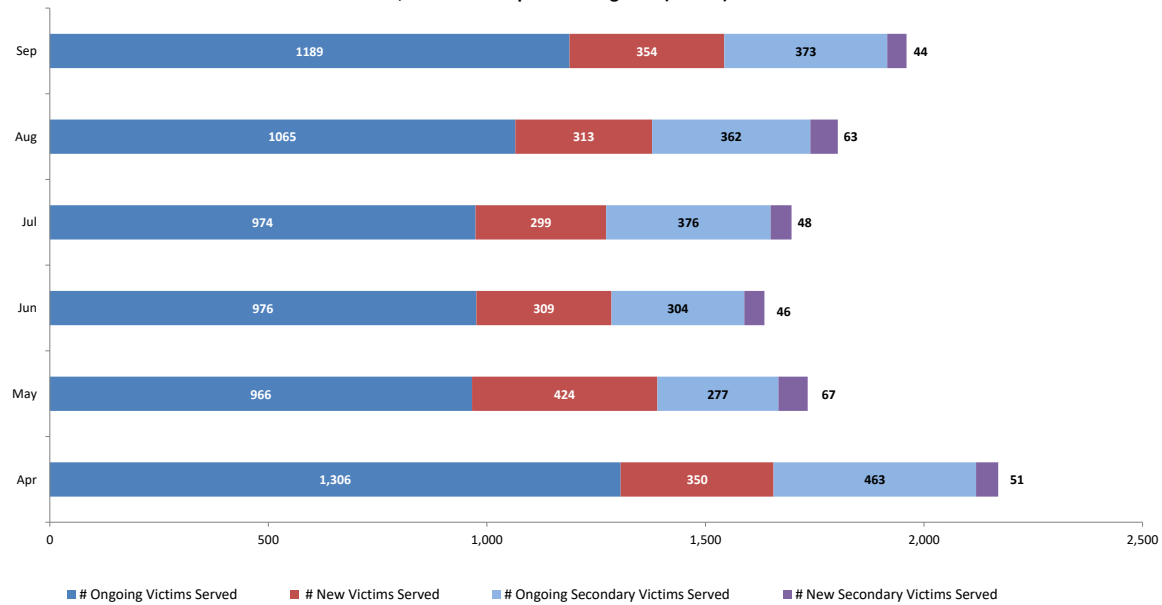
Section V: Family & Community Partnerships

Family Success Centers - Families Served



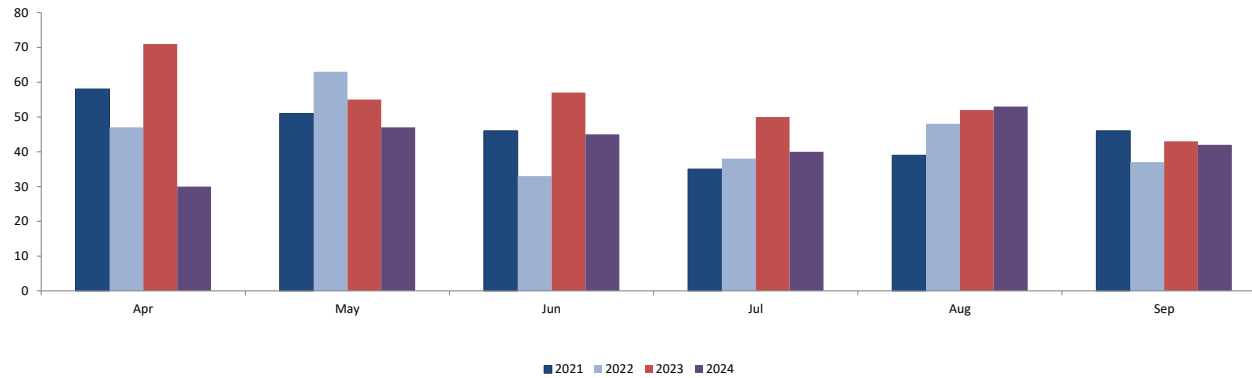
Section VI: Division on Women

Sexual Assault, Abuse and Rape Care Programs (SAARC)

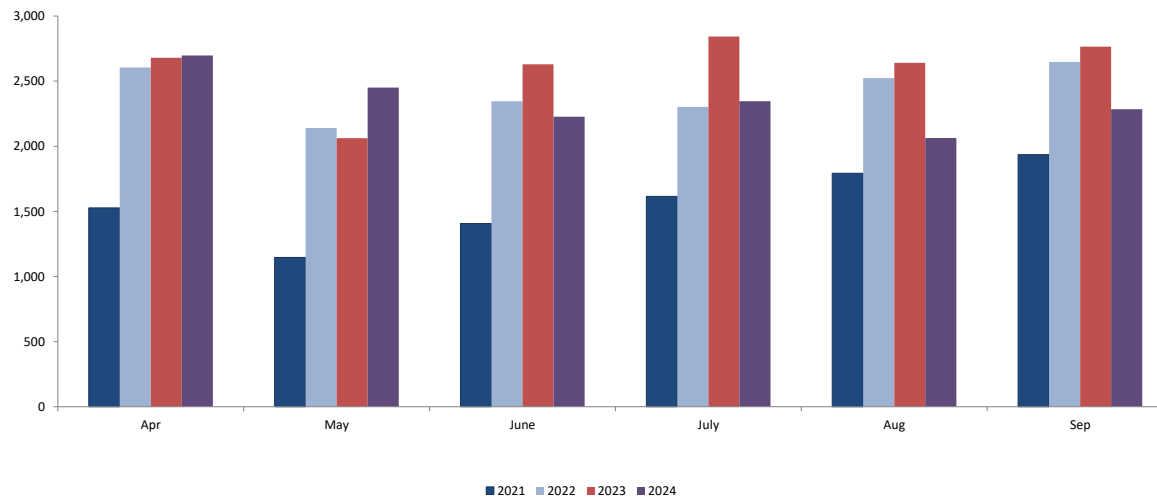


Section VI: Division on Women

**Residential Domestic Violence Programs:
Victims' Average Length of Stay (days)**



**Domestic Violence Services - Adults and Children
Admitted to Residential and Non-Residential Services
Total New Clients**



Worker and Office Caseloads by Worker Type and by Local Office - October 2024

	<div><div></div>At or Above Statewide Performance</div>		<div><div></div>Below Statewide Performance</div>			
Local Office	¹ Intake		² Permanency		³ Adoption	
	Worker Compliance	Office Compliant? Yes/No	Worker Compliance	Office Compliant? Yes/No	Worker Compliance	Office Compliant? Yes/No
Atlantic East	97%	Yes	100%	Yes	100%	Yes
Atlantic West	100%	Yes	100%	Yes	100%	Yes
Bergen Central	100%	Yes	100%	Yes	100%	Yes
Bergen South	100%	Yes	100%	Yes	100%	Yes
Burlington East	100%	Yes	100%	Yes	100%	Yes
Burlington West	62%	No	100%	Yes	100%	Yes
Camden Central	76%	No	100%	Yes	100%	Yes
Camden East	100%	Yes	100%	Yes	100%	Yes
Camden North	96%	Yes	100%	Yes	100%	Yes
Camden South	100%	Yes	100%	Yes	100%	Yes
Cape May	100%	Yes	100%	Yes	100%	Yes
Cumberland East	88%	No	100%	Yes	100%	Yes
Cumberland West	79%	No	100%	Yes	100%	Yes
Essex Central	100%	Yes	100%	Yes	100%	Yes
Essex North	100%	Yes	100%	Yes	100%	Yes
Essex South	100%	Yes	100%	Yes	100%	Yes
Gloucester East	94%	Yes	100%	Yes	100%	Yes
Gloucester West	100%	Yes	100%	Yes	100%	Yes
Hudson Central	100%	Yes	100%	Yes	100%	Yes
Hudson North	100%	Yes	100%	Yes	100%	Yes
Hudson South	100%	Yes	100%	Yes	100%	Yes
Hudson West	100%	Yes	100%	Yes	100%	Yes
Hunterdon	100%	Yes	100%	Yes	100%	Yes
Mercer North	100%	Yes	100%	Yes	100%	Yes
Mercer South	100%	Yes	100%	Yes	100%	Yes
Middlesex Central	74%	No	100%	Yes	100%	Yes
Middlesex Coastal	100%	Yes	100%	Yes	100%	Yes
Middlesex West	100%	Yes	100%	Yes	100%	Yes
Monmouth North	100%	Yes	100%	Yes	100%	Yes
Monmouth South	100%	Yes	100%	Yes	100%	Yes
Morris East	100%	Yes	100%	Yes	100%	Yes
Morris West	100%	Yes	100%	Yes	100%	Yes
Newark Center City	100%	Yes	100%	Yes	100%	Yes
Newark Northeast	88%	No	100%	Yes	100%	Yes
Newark South	100%	Yes	100%	Yes	100%	Yes
Ocean North	97%	Yes	100%	Yes	100%	Yes
Ocean South	97%	Yes	100%	Yes	100%	Yes
Passaic Central	84%	No	100%	Yes	100%	Yes
Passaic North	86%	No	100%	Yes	100%	Yes
Salem	77%	No	100%	Yes	100%	Yes
Somerset	100%	Yes	100%	Yes	100%	Yes
Sussex	94%	Yes	100%	Yes	100%	Yes
Union Central	91%	Yes	100%	Yes	100%	Yes
Union East	94%	Yes	100%	Yes	100%	Yes
Union West	100%	Yes	100%	Yes	100%	Yes
Warren	100%	Yes	100%	Yes	100%	Yes
Statewide ⁴	95%	Yes	100%	Yes	100%	Yes

1 Intake

- Intake worker compliance: % of workers with no more than 8 new intakes in the month, no more than 12 Primary families and no more than a total of 14 families.

- Office Compliance: % of offices that meet the caseload standards of no more than 8 new intakes and 12 total families.

2 Permanency

- Permanency worker compliance: % of workers who meet the caseload standards of no more than 15 families and 10 children in placement.

- Office Compliance: % of offices that meet the caseload standards of no more than 15 families and 10 children in placement.

3 Adoption

- Adoption worker compliance: % of adoption workers who meet the caseload standards of 15 or fewer children.

- Office Compliance: % of offices that meet the caseload standards of 15 or fewer children.

- Offices with blank data do not carry adoption caseloads, however adoption cases in those offices are handled by other offices in that area.

4 Statewide

- Performance is based on total workers in compliance for the month, not an average. Percentages are rounded to the whole number.

CP&P Key Performance Indicators by Local Office - 6 Months View

Local Office	At or Above Statewide Performance														Below Statewide Performance
	CPS Investigations Completed w/ 60 Days	CPS Investigations Completed w/ 90 Days	Monthly Staff Visits w/Children in Placement	Visits w/Children in Placement 2x/Month for 2 Months	Visits with Parents of Children in Placement 2x/Month	Weekly Parent/Child Visits-Children with Goal of Reunification	Bi-weekly Parent-Child Visits-Children with Goal of Reunification	Monthly Sibling Visits	Initial Case Plans w/ 30 Days of Placement	6 Months Review of Case Plans for Children in Placement	Initial Family Team Meetings w/ 45 days of Placement	3 Family Team Meetings in the first 12 months of Placement	3 Family Team Meetings after 12 months in Placement	2 Family Team Meeting after 12 months in Placement	
Atlantic East	90%	98%	96%	82%	68%	68%	73%	71%	96%	99%	73%	64%	50%	94%	
Atlantic West	88%	97%	93%	100%	61%	85%	82%	63%	80%	96%	67%	38%		86%	
Bergen Central	94%	98%	98%	100%	90%	97%	88%	97%	100%	100%	90%	83%		100%	
Bergen South	85%	93%	96%	80%	62%	65%	78%	85%	100%	100%	56%	50%	50%	75%	
Burlington East	83%	94%	98%	88%	75%	53%	70%	88%	100%	96%	83%	70%	0%	100%	
Burlington West	68%	90%	88%	58%	67%	67%	81%	88%	87%	100%	23%	3%	0%	25%	
Camden Central	80%	94%	87%	91%	77%	70%	80%	84%	85%	94%	64%	46%	64%	93%	
Camden East	69%	87%	90%	77%	60%	59%	71%	77%	85%	93%	61%	78%	0%	86%	
Camden North	77%	94%	96%	76%	77%	67%	80%	90%	100%	100%	59%	54%		100%	
Camden South	71%	97%	93%	84%	75%	70%	76%	95%	88%	97%	51%	82%	80%	100%	
Cape May	90%	96%	94%	71%	72%	49%	72%	82%	100%	100%	73%	83%	67%	100%	
Cumberland East	62%	84%	88%	86%	85%	80%	84%	93%	100%	100%	85%	91%		91%	
Cumberland West	61%	93%	96%	100%	85%	83%	91%	94%	92%	100%	75%	67%		100%	
Essex Central	85%	94%	95%	81%	72%	61%	72%	92%	100%	100%	50%	50%	75%	40%	
Essex North	88%	94%	98%	94%	65%	35%	69%	64%	100%	100%	75%	0%	0%	67%	
Essex South	83%	94%	93%	58%	33%	33%	55%	84%	96%	98%	46%	67%	100%	60%	
Gloucester East	93%	98%	95%	97%	53%	64%	69%	78%	75%	87%	67%	69%	25%	83%	
Gloucester West	79%	94%	95%	94%	68%	69%	78%	93%	81%	100%	76%	59%	40%	88%	
Hudson Central	77%	90%	94%	79%	84%	69%	86%	82%	67%	93%	79%	40%	50%	50%	
Hudson North	81%	96%	99%	100%	92%	96%	89%	79%	67%	100%	50%		0%	100%	
Hudson South	86%	91%	90%	63%	60%	22%	55%	78%	100%	97%	0%	0%	0%	100%	
Hudson West	85%	97%	94%	88%	96%	96%	80%	89%	64%	100%	75%		0%	50%	
Hunterdon	91%	95%	100%	100%	94%	88%	100%	100%	100%	100%	50%			0%	
Mercer North	68%	90%	92%	83%	62%	55%	59%	59%	90%	79%	52%	40%	50%	92%	
Mercer South	81%	92%	98%	70%	59%	60%	68%	74%	92%	100%	85%	50%	50%	70%	
Middlesex Central	68%	88%	96%	86%	67%	69%	79%	78%	100%	100%	71%	100%	0%	0%	
Middlesex Coastal	83%	95%	92%	67%	83%	81%	81%	86%	100%	92%	100%	43%	63%	50%	
Middlesex West	76%	92%	95%	82%	56%	71%	78%	78%	100%	100%	86%	80%	100%	60%	
Monmouth North	97%	99%	94%	88%	64%	74%	79%	96%	91%	98%	33%	86%		50%	
Monmouth South	93%	98%	95%	86%	71%	72%	75%	83%	100%	96%	83%	93%	67%	93%	
Morris East	84%	97%	92%	100%	96%	100%	93%	99%	100%	100%	100%	83%			
Morris West	89%	97%	95%	100%	94%	100%	92%	97%	100%	100%	100%		100%	91%	
Newark Center City	84%	94%	99%	100%	88%	66%	79%	95%	100%	100%	100%	100%	67%	94%	
Newark Northeast	73%	86%	81%	100%	35%	60%	65%	74%	100%	100%	33%	50%	33%	70%	
Newark South	87%	92%	100%	86%	84%	49%	70%	94%	100%	100%	68%	82%	67%	100%	
Ocean North	93%	97%	98%	95%	69%	65%	79%	91%	94%	92%	31%	23%	50%	100%	
Ocean South	95%	98%	94%	81%	68%	67%	82%	90%	100%	99%	50%	60%	75%	77%	
Passaic Central	89%	97%	95%	100%	80%	96%	80%	87%	100%	100%	93%	82%	100%	100%	
Passaic North	91%	97%	95%	100%	90%	99%	91%	97%	100%	100%	96%	100%	100%	100%	
Salem	58%	84%	96%	95%	86%	79%	83%	92%	100%	100%	92%	100%		100%	
Somerset	83%	95%	87%	88%	67%	70%	87%	99%	100%	100%	83%	100%		33%	
Sussex	97%	98%	97%	100%	89%	100%	96%	87%	100%	100%	100%	100%		100%	
Union Central	72%	93%	98%	92%	57%	89%	85%	100%	100%	100%	100%	100%		85%	
Union East	93%	97%	97%	100%	76%	87%	83%	89%	80%	100%	100%	55%		100%	
Union West	75%	95%	89%	50%	59%	59%	79%	76%	100%	100%	83%	50%	100%	38%	
Warren	56%	83%	86%	60%	50%	40%	62%	77%	91%	87%	22%	40%		100%	
Statewide	82%	94%	93%	85%	70%	67%	77%	85%	92%	97%	67%	62%	54%	82%	

Blank cells mean that the office did not have any children eligible for that measure during that period.

These data points are preliminary and subject to change based on user data entry.

Description of the Measure	Time Period Analyzed
CPS Investigations Completed w/ 60 Days	March 24 - August 24
CPS Investigations Completed w/ 90 Days	March 24 - August 24
Monthly Staff Visits w/Children in Placement	May 24 - October 24
Visits w/Children in Placement 2x/Month for 2 Months	March 24 - August 24
Visits with Parents of Children in Placement 2x/Month	May 24 - October 24
Weekly Parent/Child Visits-Children with Goal of Reunification	9/21/2024 - 10/26/2024
Bi-weekly Parent-Child Visits-Children with Goal of Reunification	May 24 - October 24
Monthly Sibling Visits	May 24 - October 24
Initial Case Plans w/ 30 Days of Placement	May 24 - October 24
6 Months Review of Case Plans for Children in Placement	May 24 - October 24
Initial Family Team Meetings w/ 45 days of Placement	April 24 - September 24
3 Family Team Meetings in the first 12 months of Placement	May 24 - October 24
3 Family Team Meetings after 12 months in Placement	May 24 - October 24
2 Family Team Meeting after 12 months in Placement	May 24 - October 24