



NEW JERSEY DEPARTMENT OF
CHILDREN AND FAMILIES

Commissioner's Monthly Report December-25

Christine Beyer
Commissioner

Monthly Report

Table of Contents

TABLE OF CONTENTS	2
KEY PERFORMANCE INDICATORS	3
DCF AT A GLANCE - DASHBOARD	4
SECTION I: CHILD PROTECTION & PERMANENCY	5-7
SECTION II: ADOLESCENT SERVICES	8
SECTION III: INSTITUTIONAL ABUSE INVESTIGATION UNIT	8
SECTION IV: CHILDREN'S SYSTEM OF CARE	9
SECTION V: FAMILY & COMMUNITY PARTNERSHIPS	10
SECTION VI: DIVISION ON WOMEN	10-11
ADDENDUM 1: CASELOADS	12
ADDENDUM 2: CP&P KEY PERFORMANCE INDICATORS BY LOCAL OFFICE	13

¹ Key Performance Indicators On or About October 31 st , 2025				
	Observed Month	Rolling 12 Month Average	Performance	% Difference
Investigation Timeliness CP&P 60 Days	August '25	79%	77%	-2%
Investigation Timeliness CP&P 90 Days	August '25	93%	91%	-2%
CW Visits Child 2x/Month for first 2 Months in Placement	August '25	81%	83%	2%
CW Visits Child Monthly (at placement site) ³	October '25	92%	91%	-1%
CW Visits with Parent 2x/Month - Goal of Reunification	October '25	66%	62%	-4%
Parent-Child Weekly Visit ²	October '25	64%	65%	1%
Parent-Child Visits Bi-weekly	October '25	74%	76%	2%
Child Visit with Siblings	October '25	79%	82%	3%
Initial Case Plans	October '25	88%	85%	-3%
Ongoing Case Plans	October '25	95%	95%	0%
Initial FTMs within 45 days	September '25	56%	53%	-3%
Subsequent FTMs within 12 Months	October '25	62%	67%	5%
Subsequent FTMs after 12 Months - Reunification Goal (n=23)	October '25	56%	65%	9%
Subsequent FTMs after 12 Months - Other than Reunification Goal	October '25	81%	76%	-5%
Ind. Living Assessments 14-18 Years Old	October '25	80%	75%	-5%
Caseloads: Intake	October '25	94%	96%	2%
Caseloads: Permanency	October '25	100%	100%	0%
Caseloads: Adoption	October '25	99%	99%	0%
Supervisor Worker Ratio	October '25	100%	100%	0%
Investigation Timeliness IAIU 60 Days	October '25	73%	76%	3%
Caseloads: IAIU Investigators	October '25	99%	92%	-7%
<div> <div></div> Performance is similar to or above the 12 months rolling average </div> <div> <div></div> Performance is below the 12 months rolling average </div>				

¹ In certain measures, performance excludes appropriate instances as per policy where events such as visits or family team meetings did not occur.

² Performance for Parent-Child Weekly Visits is calculated based on the average number of children with weekly visits over the average total number of eligible children for weekly visits.

³ Caseworker visits with Children in Placement (all locations) **October 2025: 96%.**

DCF At A Glance Dashboard

On or About October 31st, 2025

DCF At A Glance		CSOC ⁴ Quick Facts	
DCF: Total Children Served in the Month ¹	69,586	Youth Open with CSOC ⁵ (unduplicated count)	37,508
CP&P: Children/Youth Served	32,078	DD Eligible Children (unduplicated count)	14,370
Children Under 18	30,309	MRSS: Dispatches in the month	3,038
OOH Setting (<18)	2,925	MRSS: Interventions ⁶ (June 2025)	2,187
In-Home Setting (<18)	27,384	Remained in Same Living Situation	98%
Youth 18-21	1,769	Unable to Stabilize in home	1%
OOH Setting (>18)	180	Unknown (Plan not received)	1%
In-Home Setting (>18)	1,589	Care Management: Children Served	17,050
FCP: Total Clients Served ² (Sep)	7,766	OOH Settings : Children Served ⁷ (BH, I/DD, and SU)	1,022
DOW: Total Clients Served (Sep) (Excludes Displaced Homemaker)	4,663	Behavioral Health Placed out of State	0
DCF: Families Served in the Month ³	23,475	Intellectual/Developmental Disabilities Placed out of State	53
CP&P	15,932	PerformCare Calls	9,655
FCP (Family Success Centers & Home Visiting) (Sep)	7,543	I/DD Related Calls	2,300

CP&P Quick Facts		FCP & DoW Quick Facts ⁹	
Hotline Referrals	15,326	FSCs: Families Served (Sep 2025)	3,935
CPS Reports	35%	Home Visiting: Families Served (Sep 2025)	3,608
CWS Referrals	6%	SBYSP: Students Receiving Evidence-Based Prevention Programs (Sep 2025)	223
Number of Human Trafficking Referrals ⁸ (October 2025)	9		
Response Timeliness	97%	DV Services: Clients Served (Sep 2025)	2,403
Monthly Staff Contacts/Children OOH-Placement Site	91%	Residential	11%
Entries to Care	146	Non-Residential	89%
Exits from Care	100		
Subsidized Adoptions/KLG (Includes Subsidized Adoptions and subsidized KLGs)	11,051	SAARC: Clients Served (Sep 2025)	2,260

¹ Some children may be served by both CP&P and CSOC and are over-represented in the final count of children served in the month.

² FCP measures clients served in SBYSP and DV Services. Since Family Success Centers and Home Visitation programs report data in terms of families served, each family is assumed to have at least one client.

³ Families served by DCF includes CP&P families and FCP families. FCP families served data has a one month lag.

⁴ CSOC Children may receive multiple services and are counted multiple times.

⁵ The definition for "Youth Open with CSOC" reflects youth who are involved and eligible to receive services through CSOC.

⁶ Mobile Response Interventions has a five month lag to allow for the data to settle for accurate reporting.

⁷ As of October 2022, the CSOC OOH sections will now include all CSOC Out of Home Treatment Settings (Behavioral Health, Intellectual/Developmentally Disabled, and Substance Use). This includes updating the totals reported, a new 3-year OOH trend report, and a monthly OOH report grouped by similar treatment settings.

⁸ The cumulative number of human trafficking referrals between **November 2013 and October 2025 was 1,538**. This figure could change depending on when the data is extracted.

⁹ FCP quick facts are based on new families for FSCs, but both new and ongoing clients for Home Visiting and SBYSP. DoW quick facts are based on new clients for DV Services, but both new and ongoing clients served for SAARC, Displaced Homemakers and Rape Prevention Education.

Note: OOH Behavioral Health Settings: Children Served - Excludes Youth in Detention Alternatives and Diagnostic Settings.

Effective June 2017, All DoW data is reported Monthly except for Residential DV shelters and Unmet Needs Data.

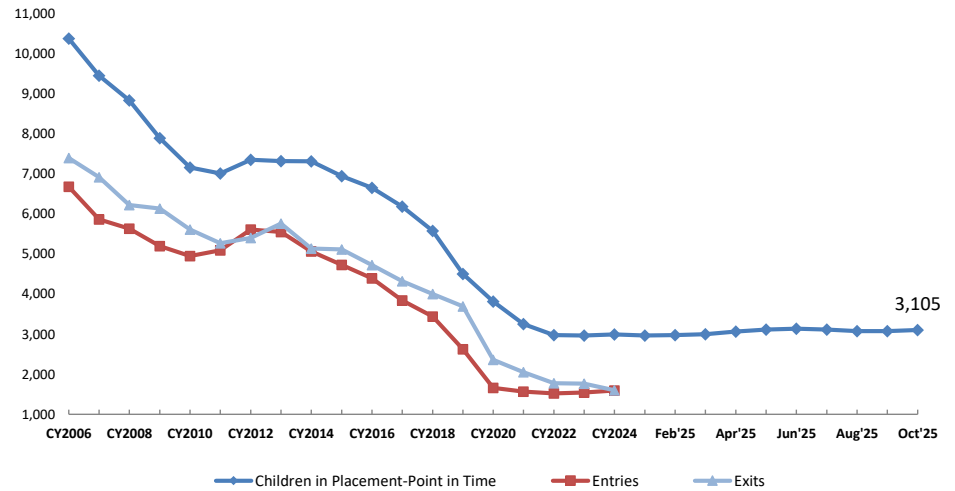
Note: Due to system upgrades within DCF, Displaced Homemaker data will not be available beginning November 2021. DCF will resume reporting on these data after the new systems have been updated with these data.

Section I: Child Protection & Permanency

CP&P Quick Facts

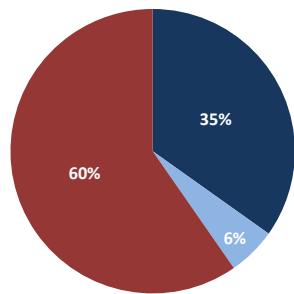
	As of Oct 31st 2025	Δ from Oct '24
Families Under CP&P Supervision	15,932	-4%
Children Under CP&P Supervision	32,078	-2%
Children Receiving CP&P In-Home Services	28,973	-3%
Children in CP&P Out-of-Home Placement		
Resource Family (non-Kin)	40% 1,248	3,105 1%
Resource Family Kinship	46% 1,431	
Group and Residential	12% 384	
Independent Living	1% 42	
Children Legally Free for Adoption (Excludes TPR Appeals)	406	-11%
Finalized Adoptions to date (CY2025) - As of 10/31/2025	215	-21%
Children in Subsidized Kinship Legal Guardianship	1,250	1%
Children in Subsidized Adoptions	9,801	-8%
Entries to Care	146	7%
Exits from Care	100	-28%

Children in Out-of-Home Placement:
Annual Entries, Exits and Monthly Point in Time Children in Placement



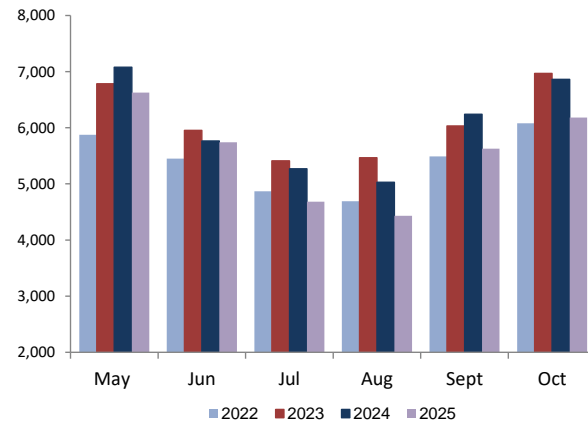
Total SCR Intakes

n = 15,326
October 2025

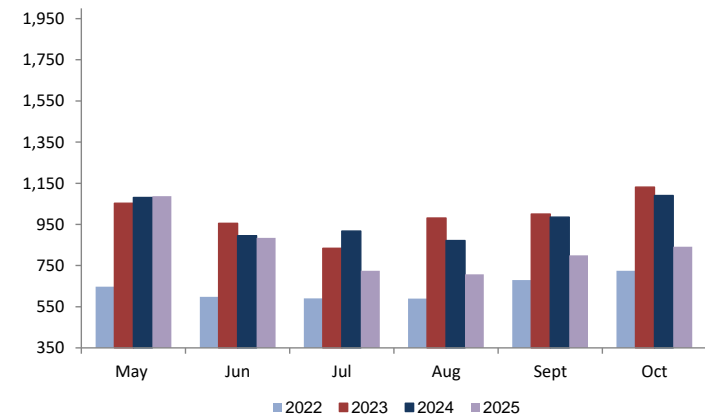


- CPS Reports
- CWS Referrals
- Non CPS/CWS Child Related Calls

CPS & CWS Referrals

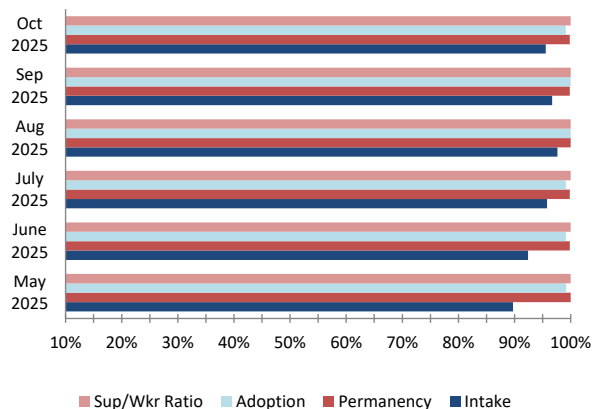


CWS Referrals Assigned to Local Offices

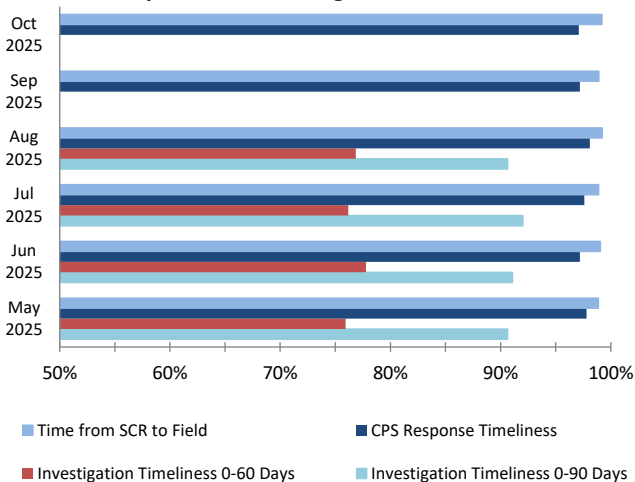


Section I: Child Protection & Permanency

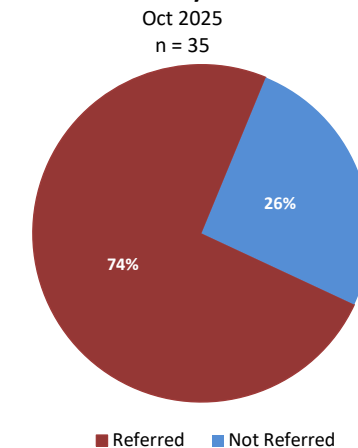
**Caseload Compliance
(Individual Worker Level)**



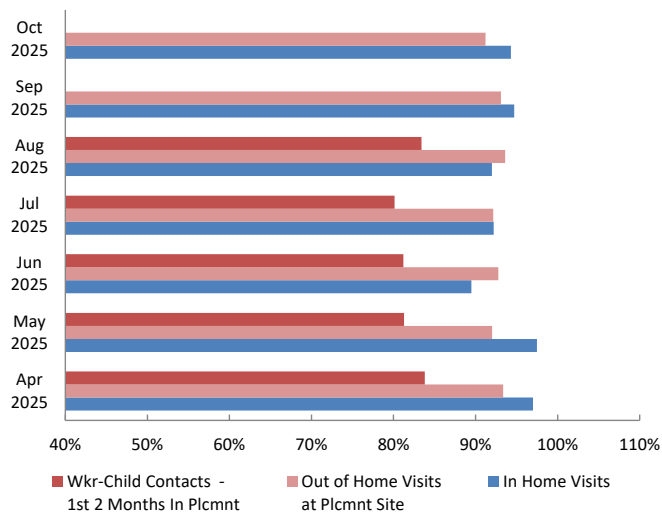
Response and Investigation Timeliness



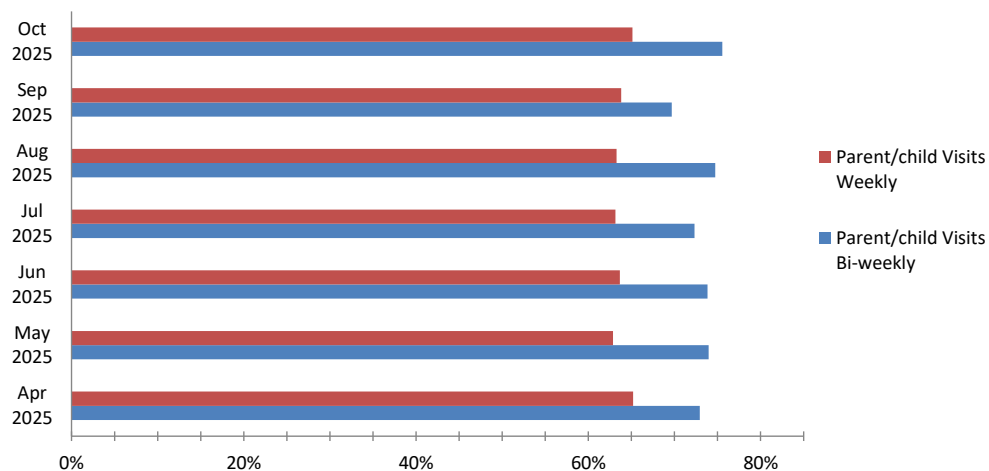
Referrals to Early Intervention



Worker - Child Visits

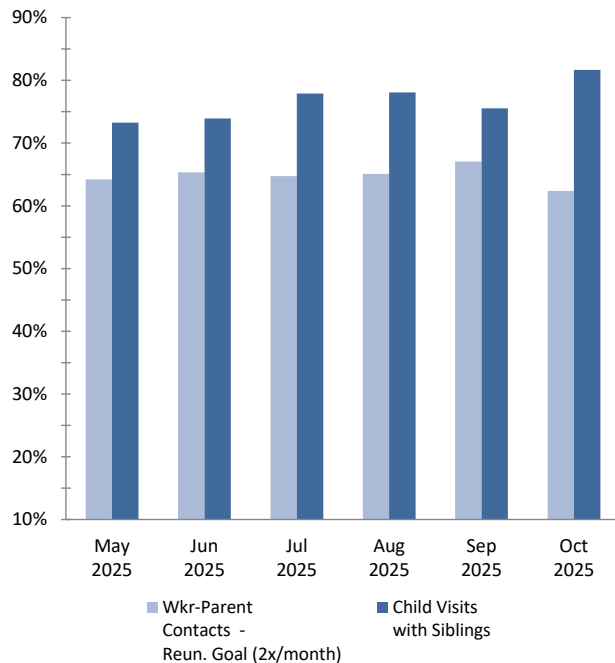


Parent - Child Visits

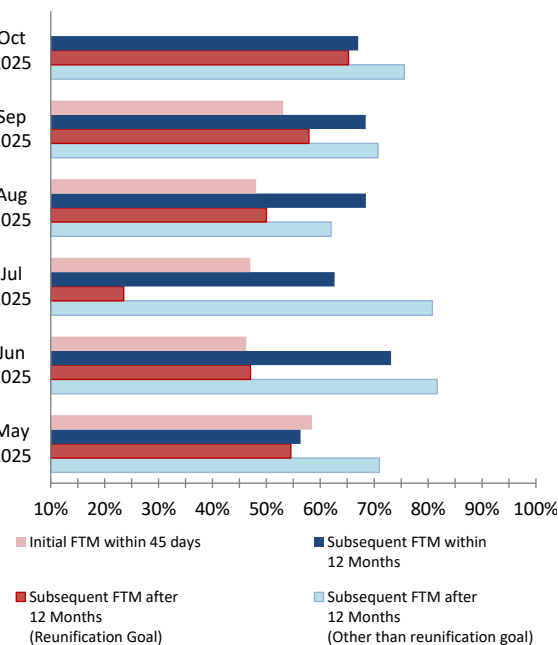


Section I: Child Protection & Permanency

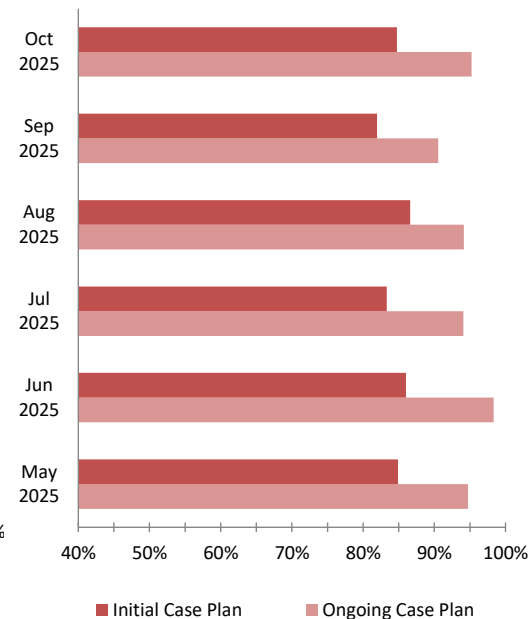
Worker- Parent Visits & Sibling Visits



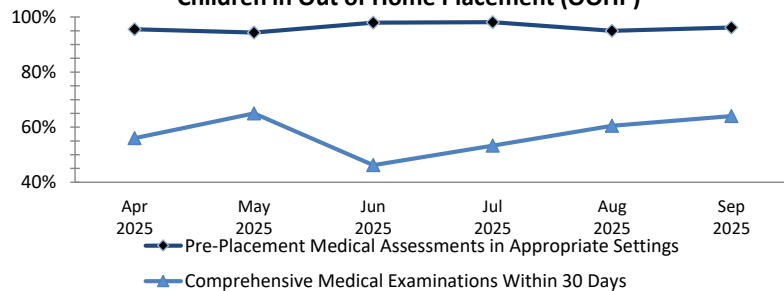
Initial & Subsequent Family Team Meetings



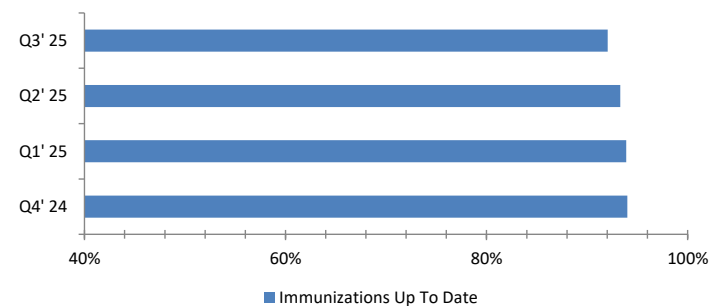
Initial & Ongoing Case Plans



Medical Assessments for
Children in Out of Home Placement (OOHP)



Immunizations for
Children in OOHP



Section II: Adolescent Services

OAS Quick Facts (October 2025)

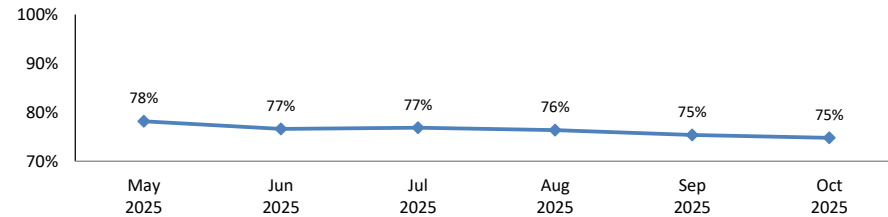
Youth 18-23

Youth 18-23 years old served by CP&P¹			1,769
Youth served "In Home" living with a parent/relative or living independently²			1,589
Youth served "Out-of-Home"			180
Resource Family (non-Kin)	(35.6%)	64	
Resource Family Kinship	(18.9%)	34	
Congregate Care Setting	(27.2%)	49	
Independent Living	(17.8%)	32	
Public Institution	(01.0%)	1	
Youth Receiving Adoption or KLG Subsidy			468

¹ The data includes all 18-21 year olds who are active participants in an open CP&P case as of the end of the month.

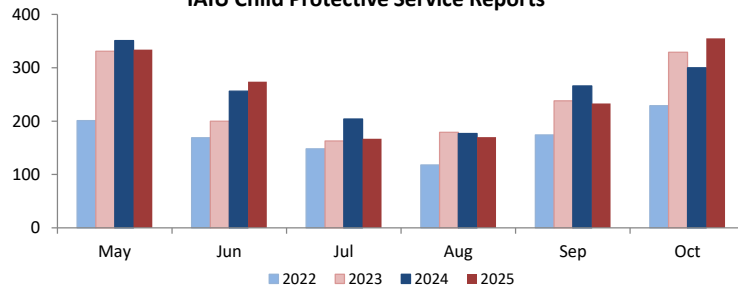
² The terms "out-of-home" and "in-home" may not be appropriate for all 18-21 year olds. Youth identified as "in-home" can either be residing with a parent/relative, or living independently. Any of these youth may be receiving services. These definitions are currently being reviewed to better understand how we capture DCF's work with this population. The goal of this ongoing work is to create three meaningful categories for 18-21 year olds 1) Youth in a formal out-of-home placement setting, 2) Youth that achieved permanency, and 3) Youth that never achieved permanency.

Completed Independent Living Assessments of Youth Ages 14-18 years

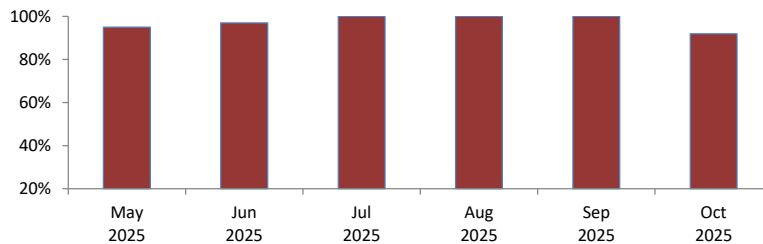


Section III: Institutional Abuse Investigation Unit

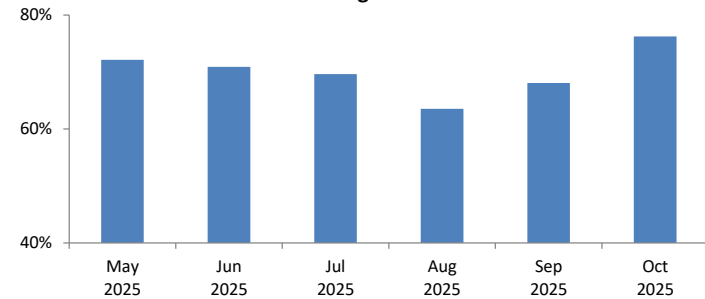
IAIU Child Protective Service Reports



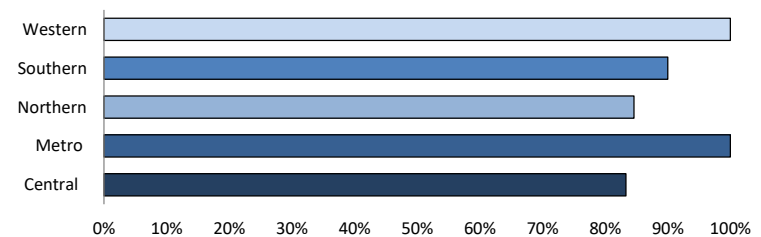
IAIU Caseload Report Statewide



IAIU Investigation Timeliness



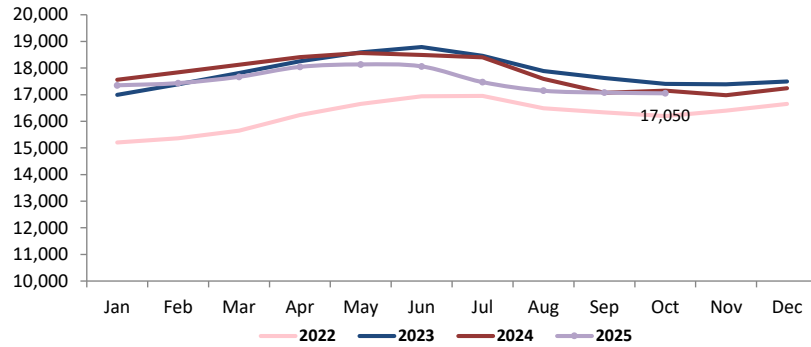
IAIU Caseload Report by Region October 2025



Section IV: Children's System of Care

Children in Care Management

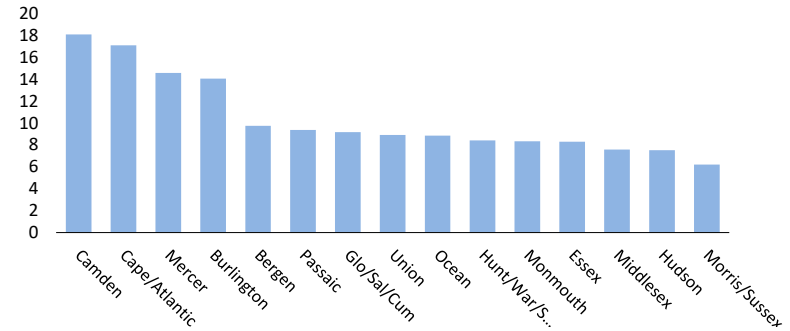
as of October 31st 2025



Rate of Children in Care Management by Service Area

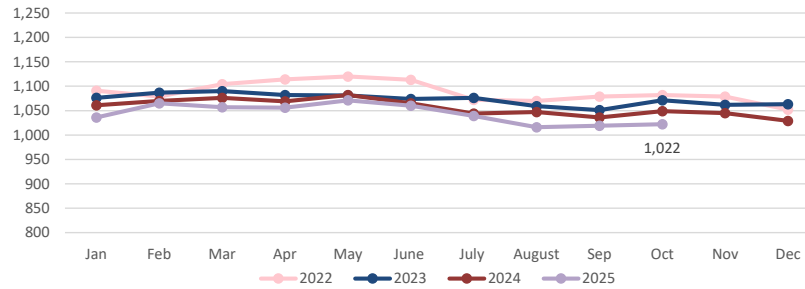
as of October 31st 2025

n=17,050



Children in Out of Home Treatment Settings

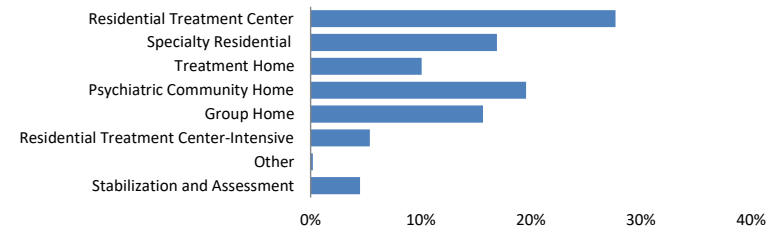
as of October 31st 2025



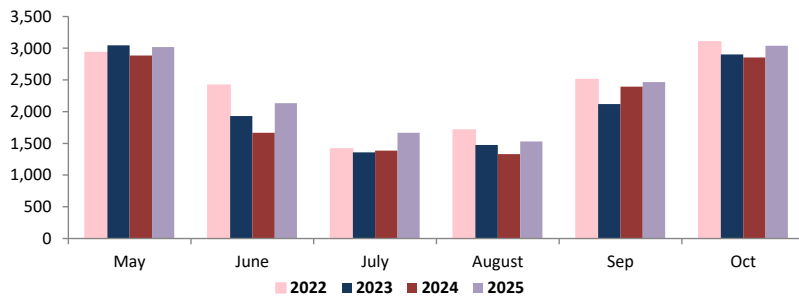
Children in Out-of-Home Treatment Settings

as of October 31st 2025

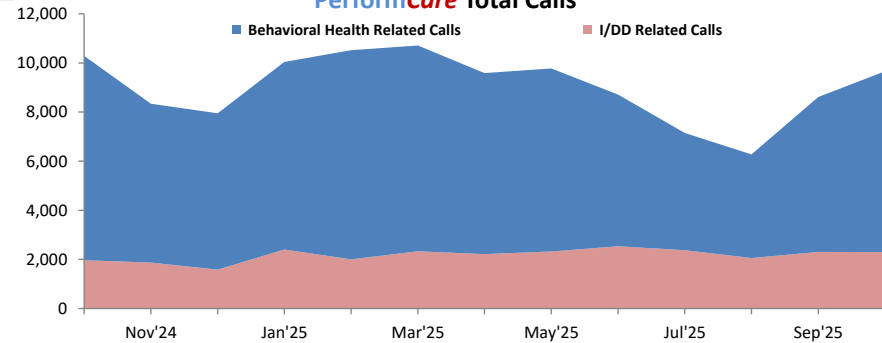
n= 1,022



Mobile Response Stabilization Services (MRSS) Dispatched

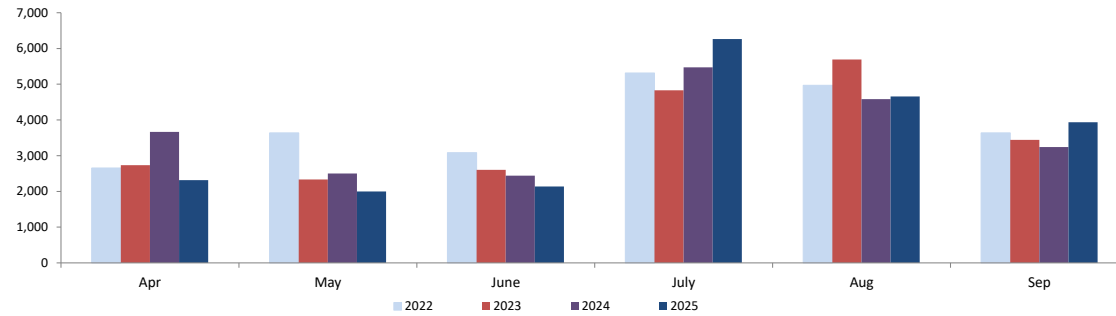


PerformCare Total Calls



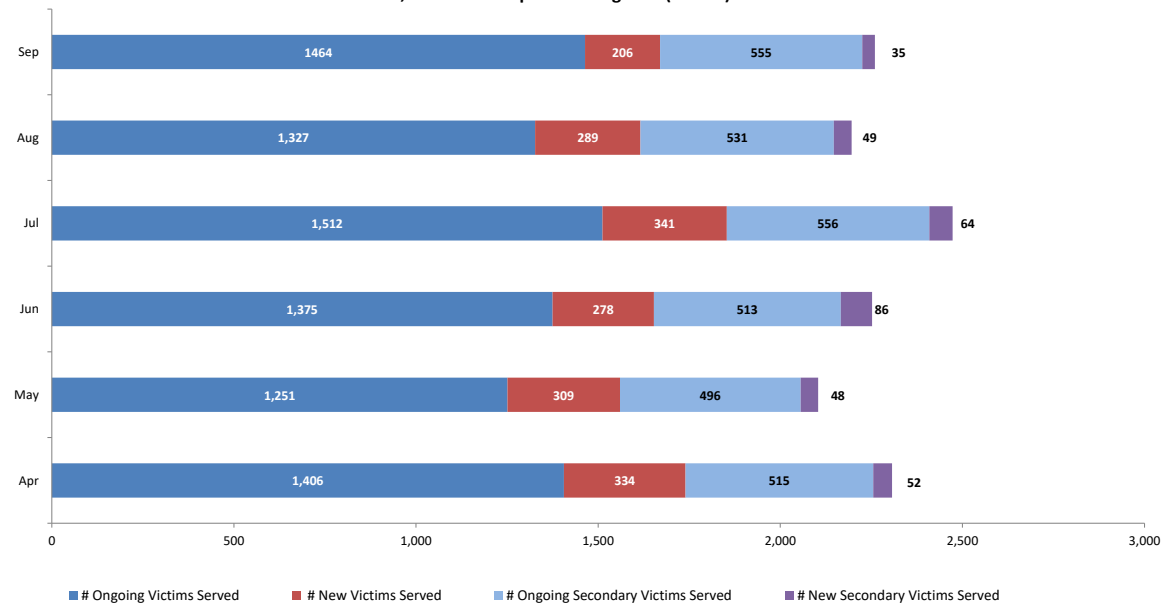
Section V: Family & Community Partnerships

Family Success Centers - Families Served



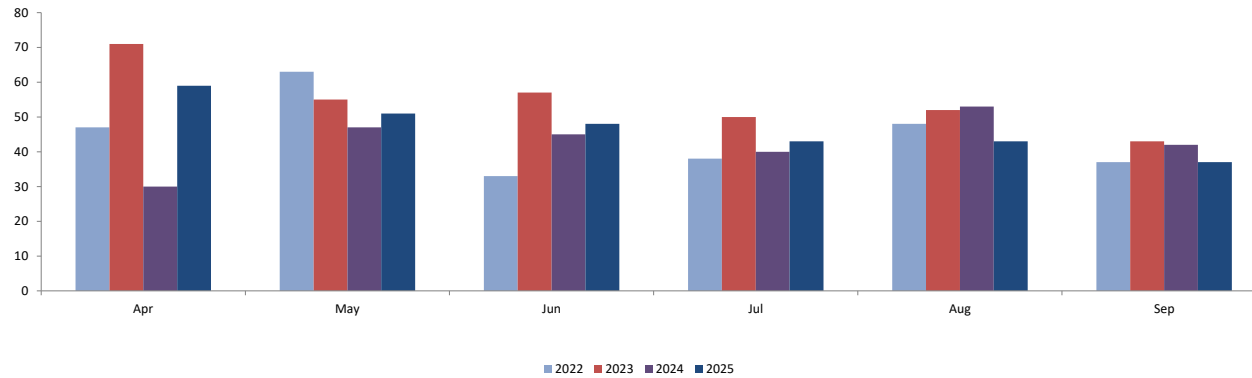
Section VI: Division on Women

Sexual Assault, Abuse and Rape Care Programs (SAARC)

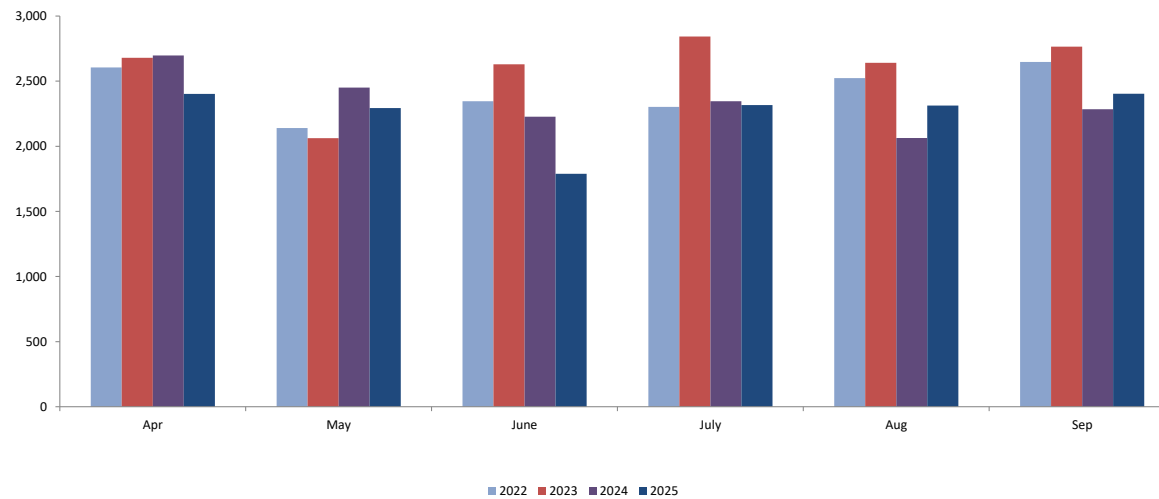


Section VI: Division on Women

**Residential Domestic Violence Programs:
Victims' Average Length of Stay (days)**



**Domestic Violence Services - Adults and Children
Admitted to Residential and Non-Residential Services
Total New Clients**



Worker and Office Caseloads by Worker Type and by Local Office - October 2025

	At or Above Statewide Performance		Below Statewide Performance			
Local Office	¹ Intake		² Permanency		³ Adoption	
	Worker Compliance	Office Compliant? Yes/No	Worker Compliance	Office Compliant? Yes/No	Worker Compliance	Office Compliant? Yes/No
Atlantic East	100%	Yes	100%	Yes	100%	Yes
Atlantic West	90%	Yes	100%	Yes	100%	Yes
Bergen Central	93%	Yes	100%	Yes	100%	Yes
Bergen South	100%	Yes	100%	Yes	100%	Yes
Burlington East	100%	Yes	100%	Yes	100%	Yes
Burlington West	70%	No	100%	Yes	100%	Yes
Camden Central	96%	Yes	100%	Yes	67%	No
Camden East	88%	No	100%	Yes	100%	Yes
Camden North	100%	Yes	100%	Yes	100%	Yes
Camden South	94%	Yes	100%	Yes	100%	Yes
Cape May	100%	Yes	100%	Yes	100%	Yes
Cumberland East	100%	Yes	100%	Yes	100%	Yes
Cumberland West	100%	Yes	100%	Yes	100%	Yes
Essex Central	100%	Yes	100%	Yes	100%	Yes
Essex North	74%	No	88%	No	100%	Yes
Essex South	71%	No	100%	Yes	100%	Yes
Gloucester East	100%	Yes	100%	Yes	100%	Yes
Gloucester West	87%	No	100%	Yes	100%	Yes
Hudson Central	95%	Yes	100%	Yes	100%	Yes
Hudson North	100%	Yes	100%	Yes	100%	Yes
Hudson South	100%	Yes	100%	Yes	100%	Yes
Hudson West	100%	Yes	100%	Yes	100%	Yes
Hunterdon	100%	Yes	100%	Yes	100%	Yes
Mercer North	89%	No	100%	Yes	100%	Yes
Mercer South	95%	Yes	100%	Yes	100%	Yes
Middlesex Central	100%	Yes	100%	Yes	100%	Yes
Middlesex Coastal	100%	Yes	100%	Yes	100%	Yes
Middlesex West	100%	Yes	100%	Yes	100%	Yes
Monmouth North	100%	Yes	100%	Yes	100%	Yes
Monmouth South	100%	Yes	100%	Yes	100%	Yes
Morris East	87%	No	100%	Yes	100%	Yes
Morris West	100%	Yes	100%	Yes	100%	Yes
Newark Center City	100%	Yes	100%	Yes	100%	Yes
Newark Northeast	88%	No	100%	Yes	100%	Yes
Ocean North	100%	Yes	100%	Yes	100%	Yes
Ocean South	97%	Yes	100%	Yes	100%	Yes
Passaic Central	100%	Yes	100%	Yes	100%	Yes
Passaic North	100%	Yes	100%	Yes	100%	Yes
Salem	100%	Yes	100%	Yes	100%	Yes
Somerset	100%	Yes	100%	Yes	100%	Yes
Sussex	100%	Yes	100%	Yes		
Union Central	100%	Yes	100%	Yes	100%	Yes
Union East	100%	Yes	100%	Yes	100%	Yes
Union West	100%	Yes	100%	Yes	100%	Yes
Warren	76%	No	100%	Yes	100%	Yes
Statewide⁴	96%	Yes	100%	Yes	99%	Yes

1 Intake

- Intake worker compliance: % of workers with no more than 8 new intakes in the month, no more than 12 Primary families and no more than a total of 14 families.

- Office Compliance: % of offices that meet the caseload standards of no more than 8 new intakes and 12 total families.

2 Permanency

- Permanency worker compliance: % of workers who meet the caseload standards of no more than 15 families and 10 children in placement.

- Office Compliance: % of offices that meet the caseload standards of no more than 15 families and 10 children in placement.

3 Adoption

- Adoption worker compliance: % of adoption workers who meet the caseload standards of 15 or fewer children.

- Office Compliance: % of offices that meet the caseload standards of 15 or fewer children.

- Offices with blank data do not carry adoption caseloads, however adoption cases in those offices are handled by other offices in that area.

4 Statewide

- Performance is based on total workers in compliance for the month, not an average. Percentages are rounded to the whole number.

CP&P Key Performance Indicators by Local Office - 6 Months View														
Local Office	CPS Investigations Completed w/ 60 Days	CPS Investigations Completed w/ 90 Days	Monthly Staff Visits w/Children in Placement	Visits w/Children in Placement 2x/Month for 2 Months	Visits with Parents of Children in Placement 2x/Month	Weekly Parent/Child Visits-Children with Goal of Reunification	Bi-weekly Parent-Child Visits-Children with Goal of Reunification	Monthly Sibling Visits	Initial Case Plans w/ 30 Days of Placement	6 Months Review of Case Plans for Children in Placement	Initial Family Team Meetings w/ 45 days of Placement	3 Family Team Meetings in the first 12 months of Placement	3 Family Team Meetings after 12 months in Placement	2 Family Team Meeting after 12 months in Placement
Atlantic East	92%	97%	90%	72%	54%	54%	71%	71%	95%	100%	64%	68%	38%	36%
Atlantic West	80%	90%	97%	78%	63%	79%	84%	97%	100%	96%	83%	89%		50%
Bergen Central	85%	96%	92%	62%	84%	82%	78%	67%	92%	92%	64%	100%	100%	80%
Bergen South	90%	95%	97%	92%	69%	84%	87%	100%	56%	95%	78%	100%		100%
Burlington East	69%	91%	96%	66%	65%	60%	76%	83%	75%	96%	35%	50%	0%	87%
Burlington West	74%	92%	90%	57%	49%	65%	73%	76%	79%	90%	21%	6%	6%	17%
Camden Central	69%	84%	82%	66%	54%	56%	70%	85%	74%	80%	36%	38%	30%	52%
Camden East	60%	85%	88%	88%	63%	54%	79%	76%	84%	98%	47%	78%	0%	100%
Camden North	65%	84%	94%	82%	73%	64%	84%	98%	92%	92%	44%	73%		100%
Camden South	69%	96%	93%	83%	68%	70%	78%	86%	88%	90%	33%	63%	0%	88%
Cape May	73%	88%	96%	88%	66%	52%	58%	78%	88%	100%	67%	71%	100%	88%
Cumberland East	73%	93%	92%	95%	84%	95%	91%	100%	100%	100%	74%	63%		100%
Cumberland West	63%	90%	95%	100%	86%	67%	88%	94%	100%	100%	100%	100%	100%	100%
Essex Central	72%	88%	91%	72%	40%	48%	49%	63%	94%	100%	30%	63%	0%	60%
Essex North	68%	84%	95%	73%	18%	14%	23%	67%	100%	100%	0%		0%	62%
Essex South	68%	83%	85%	68%	24%	26%	35%	60%	100%	88%	9%	17%	0%	31%
Gloucester East	95%	97%	92%	93%	57%	62%	78%	91%	88%	88%	45%	89%	75%	100%
Gloucester West	52%	73%	97%	88%	78%	84%	82%	93%	95%	93%	46%	90%	100%	60%
Hudson Central	73%	89%	99%	92%	85%	78%	90%	100%	100%	98%	63%	88%	67%	100%
Hudson North	84%	95%	93%	100%	76%	65%	88%	90%	100%	100%	100%			100%
Hudson South	82%	93%	98%	94%	64%	59%	66%	84%	100%	100%	50%	100%		67%
Hudson West	88%	97%	94%	59%	54%	44%	48%	79%	70%	87%	78%	55%	0%	0%
Hunterdon	95%	98%	97%	100%	77%	100%	97%	91%	100%	100%	80%	100%		100%
Mercer North	68%	88%	89%	56%	48%	49%	51%	78%	73%	73%	22%	40%	43%	61%
Mercer South	83%	95%	92%	88%	55%	51%	72%	91%	86%	91%	35%	33%	38%	67%
Middlesex Central	67%	90%	97%	82%	70%	69%	86%	95%	73%	86%	69%	75%		100%
Middlesex Coastal	80%	95%	94%	69%	91%	92%	83%	58%	50%	89%	33%	88%	75%	77%
Middlesex West	68%	84%	95%	93%	56%	66%	77%	84%	73%	100%	82%	50%	100%	50%
Monmouth North	98%	99%	99%	67%	84%	99%	89%	99%	100%	100%	91%	73%		91%
Monmouth South	85%	97%	97%	87%	74%	85%	88%	93%	100%	100%	63%	88%	100%	89%
Morris East	80%	92%	98%	94%	89%	100%	90%	100%	100%	100%	78%	100%	100%	100%
Morris West	86%	96%	100%	100%	86%	100%	89%	94%	100%	100%	100%			100%
Newark Center City	59%	85%	96%	100%	73%	45%	59%	86%	81%	100%	44%	25%	67%	78%
Newark Northeast	58%	76%	83%	54%	28%	54%	61%	69%	100%	100%	0%	20%	14%	38%
Newark South	38%	70%	89%		45%	43%	69%	95%		95%		22%	100%	100%
Ocean North	85%	93%	96%	85%	72%	73%	85%	92%	100%	91%	88%	73%	100%	100%
Ocean South	91%	97%	95%	95%	74%	71%	83%	85%	100%	97%	74%	100%	67%	83%
Passaic Central	84%	95%	97%	95%	84%	99%	87%	100%	96%	100%	100%	100%	100%	100%
Passaic North	91%	97%	96%	93%	94%	97%	90%	100%	100%	100%	82%	100%	100%	100%
Salem	66%	88%	92%	89%	86%	80%	93%	92%	100%	100%	70%	100%		100%
Somerset	73%	94%	98%	80%	71%	80%	87%	88%	80%	98%	33%	80%	0%	0%
Sussex	87%	98%	99%	100%	86%	100%	78%	100%	100%	100%	100%	100%		100%
Union Central	79%	94%	96%	75%	76%	94%	92%	93%	80%	100%	100%	100%	100%	100%
Union East	87%	97%	99%	100%	79%	99%	81%	100%	100%	100%	100%	100%	100%	60%
Union West	76%	96%	95%	100%	36%	69%	63%	63%	67%	98%	50%	80%	100%	60%
Warren	46%	73%	90%	83%	72%	91%	81%	54%	86%	91%	13%	60%		67%
Statewide	77%	91%	93%	82%	64%	66%	75%	82%	89%	95%	56%	65%	47%	74%
Blank cells mean that the office did not have any children eligible for that measure during that period.														
These data points are preliminary and subject to change based on user data entry.														
Description of the Measure												Time Period Analyzed		
CPS Investigations Completed w/ 60 Days												March 25 - August 25		
CPS Investigations Completed w/ 90 Days												March 25 - August 25		
Monthly Staff Visits w/Children in Placement												May 25 - October 25		
Visits w/Children in Placement 2x/Month for 2 Months												March 25 - August 25		
Visits with Parents of Children in Placement 2x/Month												May 25 - October 25		
Weekly Parent/Child Visits-Children with Goal of Reunification												09/20/2025 - 10/25/2025		
Bi-weekly Parent-Child Visits-Children with Goal of Reunification												May 25 - October 25		
Monthly Sibling Visits												May 25 - October 25		
Initial Case Plans w/ 30 Days of Placement												May 25 - October 25		
6 Months Review of Case Plans for Children in Placement												May 25 - October 25		
Initial Family Team Meetings w/ 45 days of Placement												April 25 - September 25		
3 Family Team Meetings in the first 12 months of Placement												May 25 - October 25		
3 Family Team Meetings after 12 months in Placement												May 25 - October 25		
2 Family Team Meeting after 12 months in Placement												May 25 - October 25		