



NEW JERSEY DEPARTMENT OF
CHILDREN AND FAMILIES

Commissioner's Monthly Report June-25

Christine Beyer
Commissioner

Monthly Report

Table of Contents

TABLE OF CONTENTS	2
KEY PERFORMANCE INDICATORS	3
DCF AT A GLANCE - DASHBOARD	4
SECTION I: CHILD PROTECTION & PERMANENCY	5-7
SECTION II: ADOLESCENT SERVICES	8
SECTION III: INSTITUTIONAL ABUSE INVESTIGATION UNIT	8
SECTION IV: CHILDREN'S SYSTEM OF CARE	9
SECTION V: FAMILY & COMMUNITY PARTNERSHIPS	10
SECTION VI: DIVISION ON WOMEN	10-11
ADDENDUM 1: CASELOADS	12
ADDENDUM 2: CP&P KEY PERFORMANCE INDICATORS BY LOCAL OFFICE	13

DCF At A Glance Dashboard

On or About April 30th, 2025

DCF At A Glance		CSOC ⁴ Quick Facts	
DCF: Total Children Served in the Month ¹	74,966	Youth Open with CSOC ⁵ (unduplicated count)	40,560
CP&P: Children/Youth Served	34,406	DD Eligible Children (unduplicated count)	14,049
Children Under 18	32,602	MRSS: Dispatches in the month	2,864
OOH Setting (<18)	2,855	MRSS: Interventions ⁶ (December 2024)	2,220
In-Home Setting (<18)	29,747	Remained in Same Living Situation	95%
Youth 18-21	1,804	Unable to Stabilize in home	1%
OOH Setting (>18)	212	Unknown (Plan not received)	5%
In-Home Setting (>18)	1,592	Care Management: Children Served	18,043
FCP: Total Clients Served ² (March)	7,081	OOH Settings : Children Served ⁷ (BH, I/DD, and SU)	1,056
DOW: Total Clients Served (March) (Excludes Displaced Homemaker)	4,505	Behavioral Health Placed out of State	0
DCF: Families Served in the Month ³	23,047	Intellectual/Developmental Disabilities Placed out of State	44
CP&P	16,964	PerformCare Calls	9,587
FCP (Family Success Centers & Home Visiting) (March)	6,083	DD Related Calls	2,218

CP&P Quick Facts		FCP & DoW Quick Facts ⁹	
Hotline Referrals	14,103	FSCs: Families Served (March 2025)	2,371
CPS Reports	36%	Home Visiting: Families Served (March 2025)	3,712
CWS Referrals	7%	SBYSP: Students Receiving Evidence-Based Prevention Programs (Mar 2025)	998
Number of Human Trafficking Referrals ⁸ (April 2025)	5		
Response Timeliness	97%	DV Services: Clients Served (March 2025)	2,223
Monthly Staff Contacts/Children OOH-Placement Site	93%	Residential	14%
Entries to Care	180	Non-Residential	86%
Exits from Care	92		
Subsidized Adoptions/KLG (Includes Subsidized Adoptions and subsidized KLGs)	11,870	SAARC: Clients Served (March 2025)	2,282

¹ Some children may be served by both CP&P and CSOC and are over-represented in the final count of children served in the month.

² FCP measures clients served in SBYSP and DV Services. Since Family Success Centers and Home Visitation programs report data in terms of families served, each family is assumed to have at least one client.

³ Families served by DCF includes CP&P families and FCP families. FCP families served data has a one month lag.

⁴ CSOC Children may receive multiple services and are counted multiple times.

⁵ The definition for "Youth Open with CSOC" reflects youth who are involved and eligible to receive services through CSOC.

⁶ Mobile Response Interventions has a five month lag to allow for the data to settle for accurate reporting.

⁷ As of October 2022, the CSOC OOH sections will now include all CSOC Out of Home Treatment Settings (Behavioral Health, Intellectual/Developmentally Disabled, and Substance Use). This includes updating the totals reported, a new 3-year OOH trend report, and a monthly OOH report grouped by similar treatment settings.

⁸ The cumulative number of human trafficking referrals between **November 2013 and April 2025 was 1,494**. This figure could change depending on when the data is extracted.

⁹ FCP quick facts are based on new families for FSCs, but both new and ongoing clients for Home Visiting and SBYSP. DoW quick facts are based on new clients for DV Services, but both new and ongoing clients served for SAARC, Displaced Homemakers and Rape Prevention Education.

Note: OOH Behavioral Health Settings: Children Served - Excludes Youth in Detention Alternatives and Diagnostic Settings.

Effective June 2017, All DoW data is reported Monthly except for Residential DV shelters and Unmet Needs Data.

Note: Due to system upgrades within DCF, Displaced Homemaker data will not be available beginning November 2021. DCF will resume reporting on these data after the new systems have been updated with these data.

¹Key Performance Indicators
On or About April 30th, 2025

	Observed Month	Rolling 12 Month Average	Performance	% Difference
Investigation Timeliness CP&P 60 Days	February '25	82%	79%	-3%
Investigation Timeliness CP&P 90 Days	February '25	94%	92%	-2%
CW Visits Child 2x/Month for first 2 Months in Placement	February '25	82%	82%	0%
CW Visits Child Monthly (at placement site) ³	April '25	92%	93%	1%
CW Visits with Parent 2x/Month - Goal of Reunification	April '25	67%	66%	-1%
Parent-Child Weekly Visit ²	April '25	67%	65%	-2%
Parent-Child Visits Bi-weekly	April '25	76%	73%	-3%
Child Visit with Siblings	April '25	83%	79%	-4%
Initial Case Plans	April '25	89%	89%	0%
Ongoing Case Plans	April '25	96%	96%	0%
Initial FTMs within 45 days	March '25	64%	53%	-11%
Subsequent FTMs within 12 Months	April '25	67%	53%	-14%
Subsequent FTMs after 12 Months - Reunification Goal (n=23)	April '25	64%	55%	-9%
Subsequent FTMs after 12 Months - Other than Reunification Goal	April '25	84%	90%	6%
Ind. Living Assessments 14-18 Years Old	April '25	83%	81%	-2%
Caseloads: Intake	April '25	94%	90%	-4%
Caseloads: Permanency	April '25	100%	100%	0%
Caseloads: Adoption	April '25	99%	98%	-1%
Supervisor Worker Ratio	April '25	100%	100%	0%
Investigation Timeliness IAIU 60 Days	April '25	72%	81%	9%
Caseloads: IAIU Investigators	April '25	99%	100%	1%
<div> <div></div> Performance is similar to or above the 12 months rolling average </div> <div> <div></div> Performance is below the 12 months rolling average </div>				

¹ In certain measures, performance excludes appropriate instances as per policy where events such as visits or family team meetings did not occur.

² Performance for Parent-Child Weekly Visits is calculated based on the average number of children with weekly visits over the average total number of eligible children for weekly visits.

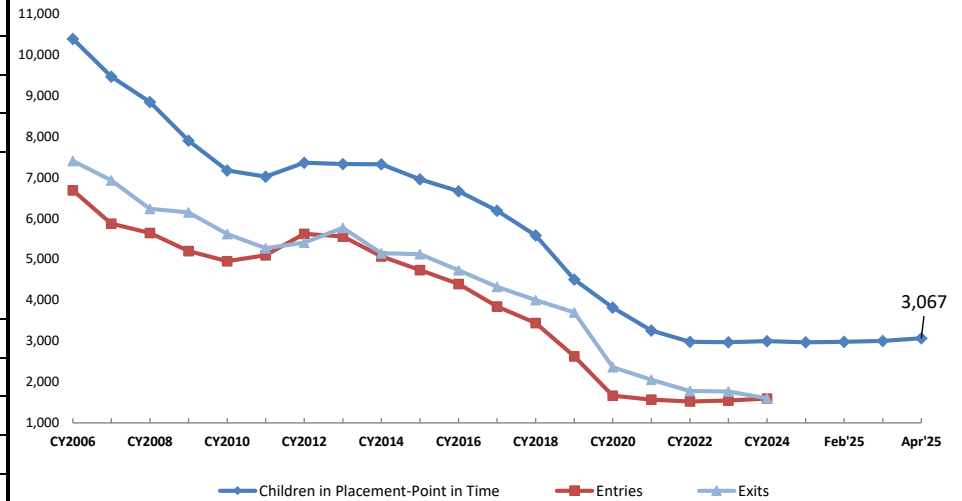
³ Caseworker visits with Children in Placement (all locations) **April 2025: 98%.**

Section I: Child Protection & Permanency

CP&P Quick Facts

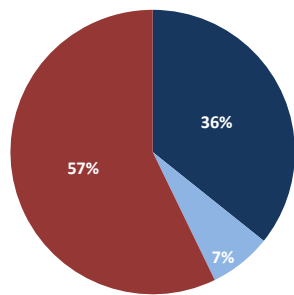
	As of Apr 30th 2025	Δ from Apr '24
Families Under CP&P Supervision	16,964	1%
Children Under CP&P Supervision	34,406	3%
Children Receiving CP&P In-Home Services	31,339	4%
Children in CP&P Out-of-Home Placement		
Resource Family (non-Kin)	40% 1,228	3,067 0%
Resource Family Kinship	46% 1,404	
Group and Residential	13% 393	
Independent Living	1% 42	
Children Legally Free for Adoption (Excludes TPR Appeals)	426	-4%
Finalized Adoptions to date (CY2025) - As of 04/30/2025	68	-18%
Children in Subsidized Kinship Legal Guardianship	1,174	0%
Children in Subsidized Adoptions	10,696	-7%
Entries to Care	180	46%
Exits from Care	92	-24%

Children in Out-of-Home Placement:
Annual Entries, Exits and Monthly Point in Time Children in Placement



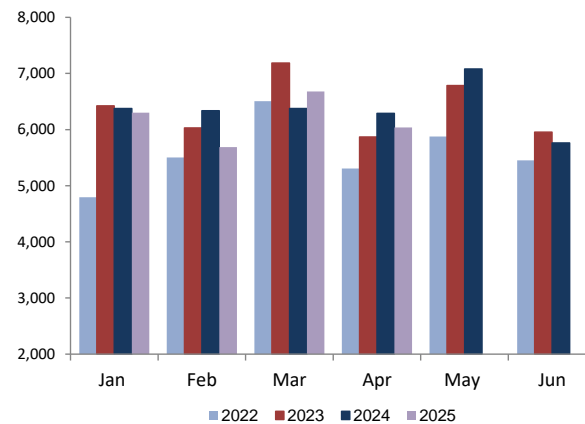
Total SCR Intakes

n = 14,103
April 2025

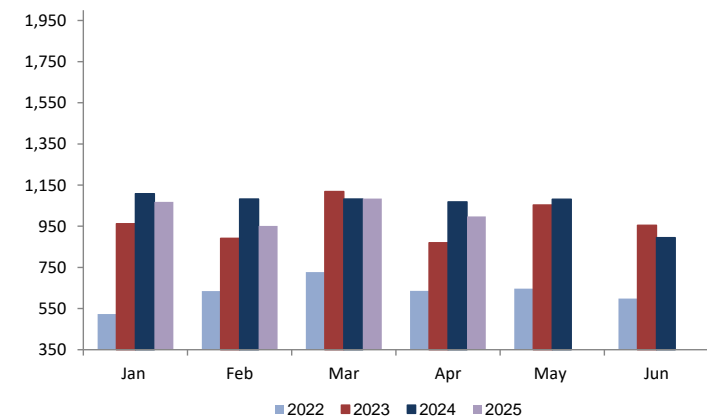


- CPS Reports
- CWS Referrals
- Non CPS/CWS Child Related Calls

CPS & CWS Referrals

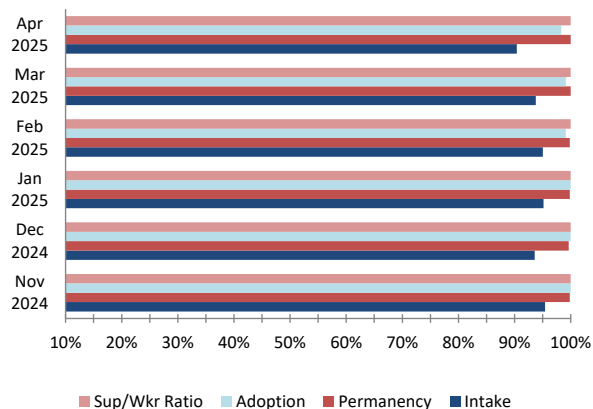


CWS Referrals Assigned to Local Offices

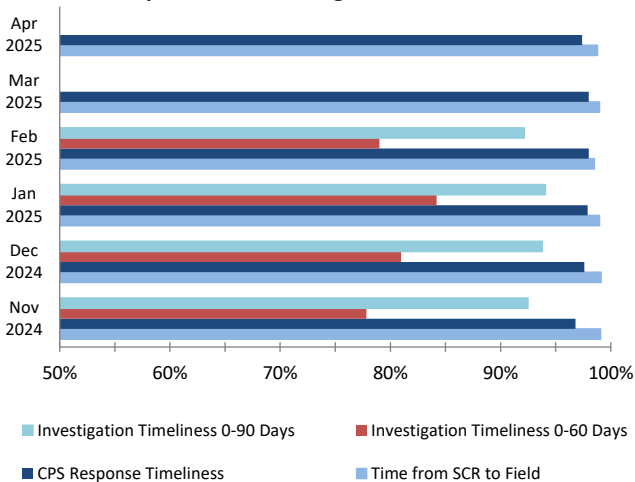


Section I: Child Protection & Permanency

**Caseload Compliance
(Individual Worker Level)**

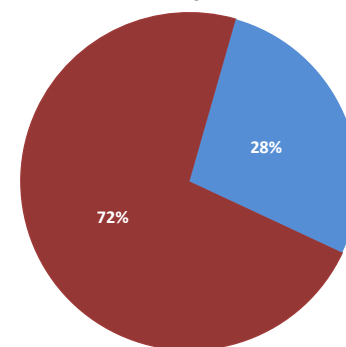


Response and Investigation Timeliness

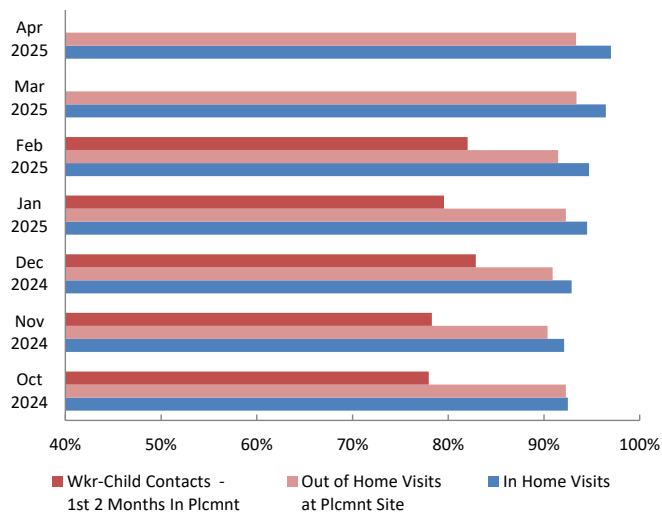


Referrals to Early Intervention

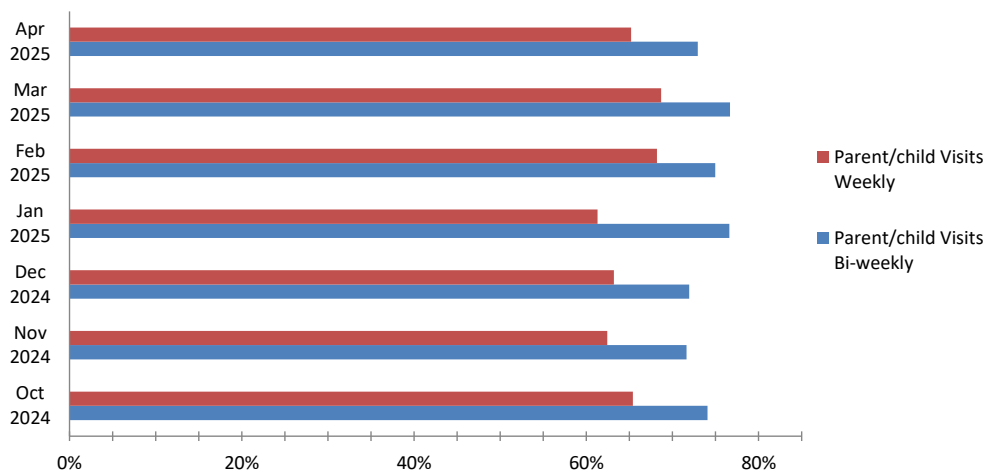
Oct 2024 - Apr 2025
n = 229



Worker - Child Visits

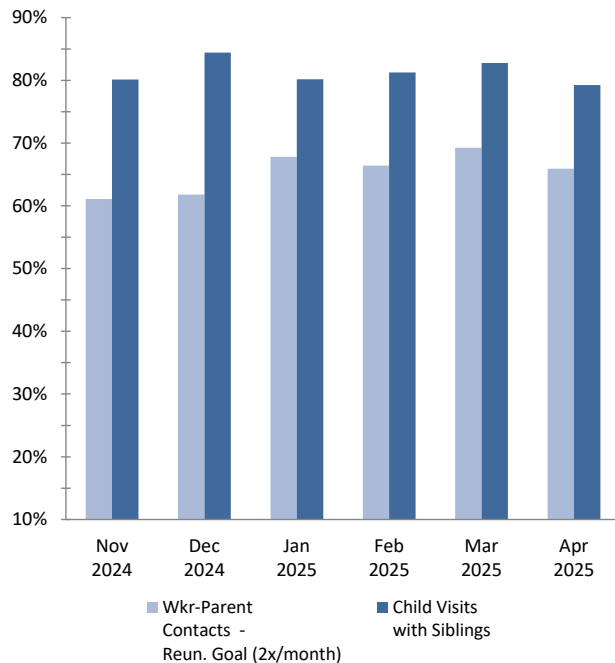


Parent - Child Visits

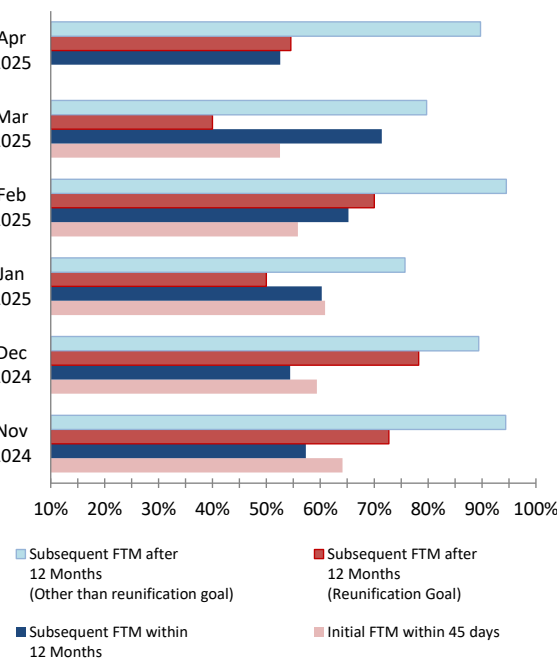


Section I: Child Protection & Permanency

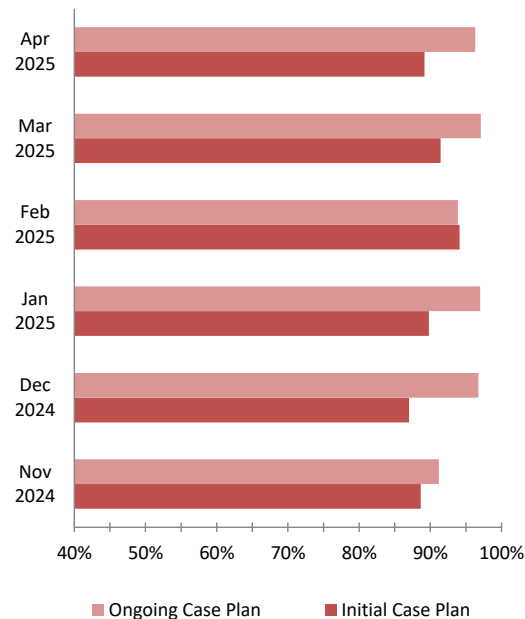
Worker- Parent Visits & Sibling Visits



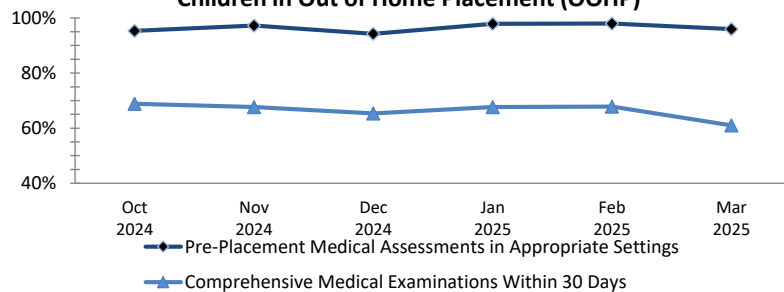
Initial & Subsequent Family Team Meetings



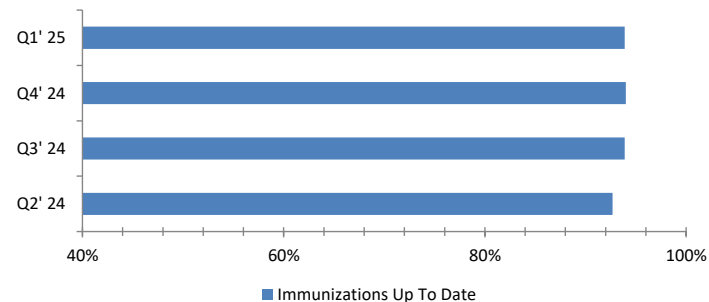
Initial & Ongoing Case Plans



Medical Assessments for
Children in Out of Home Placement (OOHP)



Immunizations for
Children in OOHP



Section II: Adolescent Services

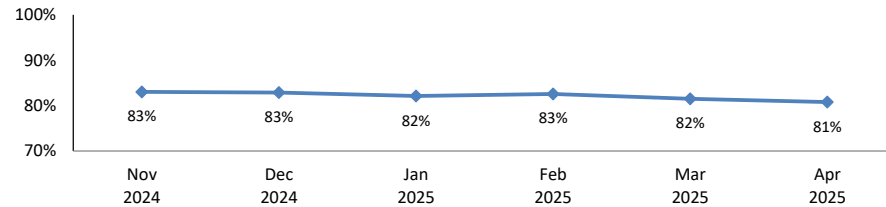
OAS Quick Facts (April 2025)
Youth 18-23

Youth 18-23 years old served by CP&P¹	1,804
Youth served "In Home" living with a parent/relative or living independently²	1,592
Youth served "Out-of-Home"	
Resource Family (non-Kin) (32.1%)	68
Resource Family Kinship (19.3%)	41
Congregate Care Setting (30.2%)	64
Independent Living (18.4%)	39
Youth Receiving Adoption or KLG Subsidy	931

¹ The data includes all 18-21 year olds who are active participants in an open CP&P case as of the end of the month.

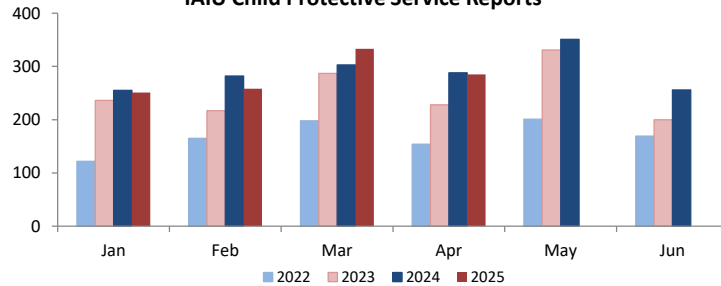
² The terms "out-of-home" and "in-home" may not be appropriate for all 18-21 year olds. Youth identified as "in-home" can either be residing with a parent/relative, or living independently. Any of these youth may be receiving services. These definitions are currently being reviewed to better understand how we capture DCF's work with this population. The goal of this ongoing work is to create three meaningful categories for 18-21 year olds 1) Youth in a formal out-of-home placement setting, 2) Youth that achieved permanency, and 3) Youth that never achieved permanency.

Completed Independent Living Assessments
of Youth Ages 14-18 years



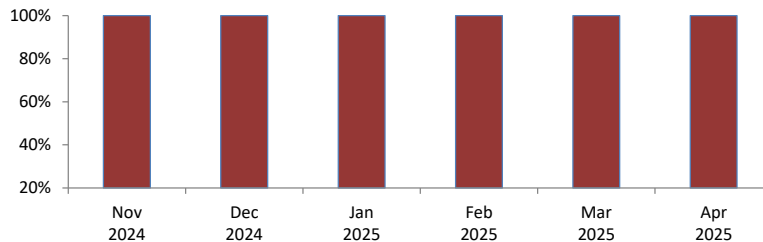
Section III: Institutional Abuse Investigation Unit

IAIU Child Protective Service Reports

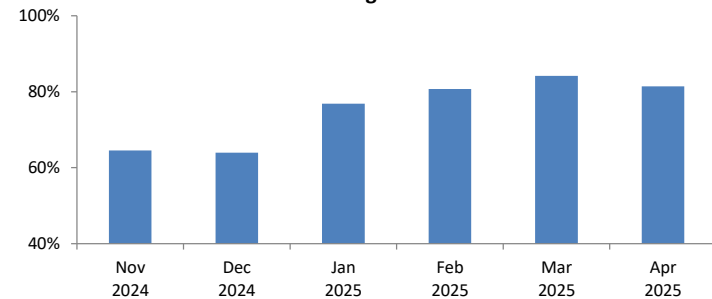


IAIU Caseload Report
Statewide

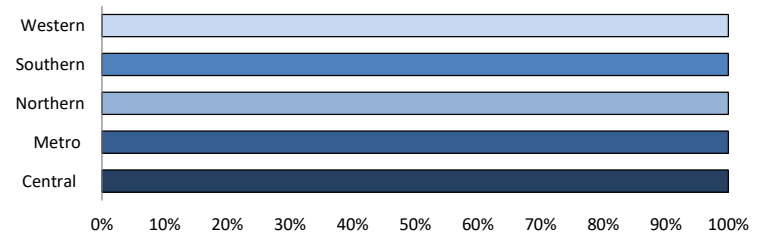
No more than 8 new investigations and 12 cases/month



IAIU Investigation Timeliness



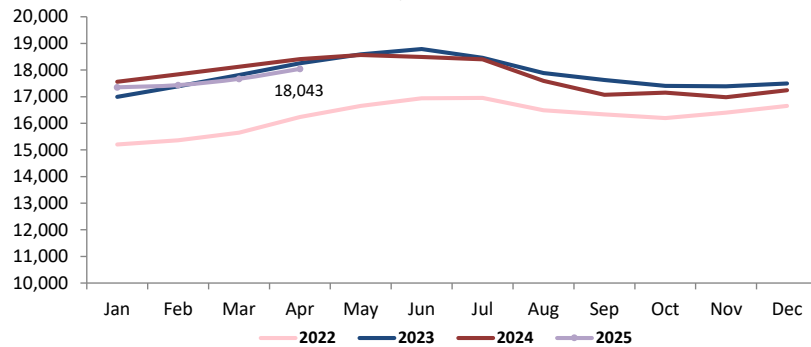
IAIU Caseload Report by Region
April 2025



Section IV: Children's System of Care

Children in Care Management

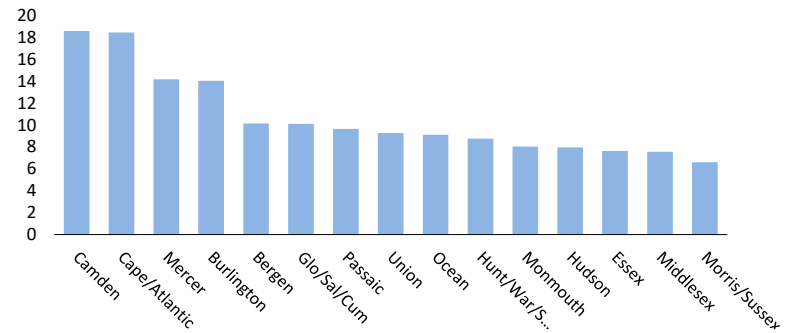
as of April 30th 2025



Rate of Children in Care Management by Service Area

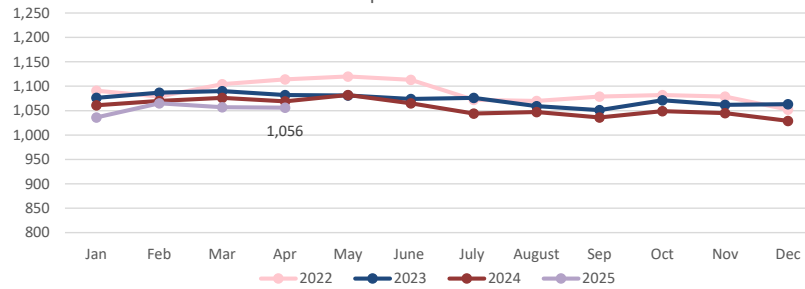
as of April 30th 2025

n=18,043



Children in Out of Home Treatment Settings

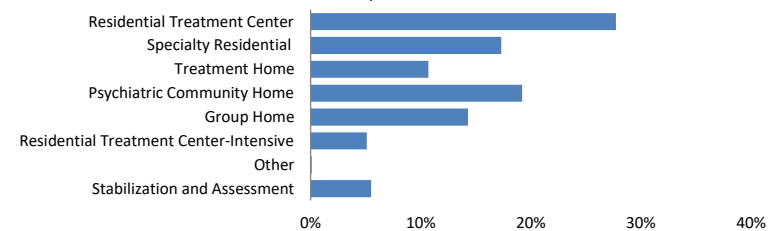
as of April 30th 2025



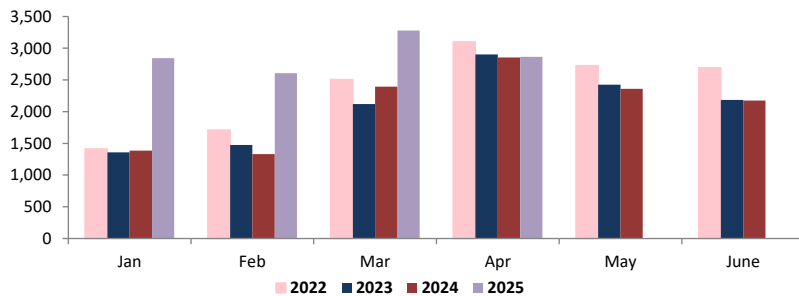
Children in Out-of-Home Treatment Settings

as of April 30th 2025

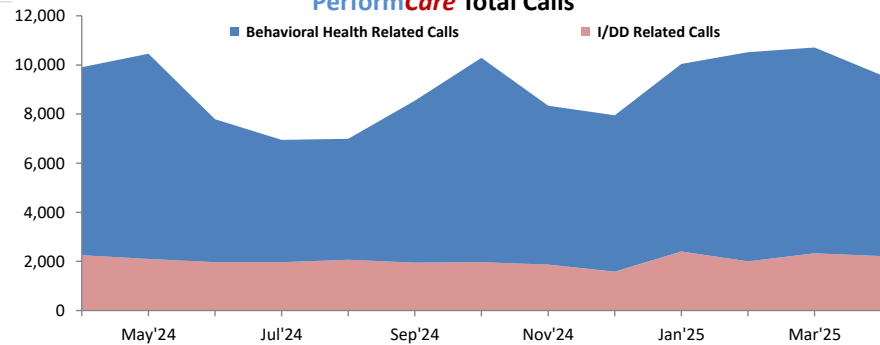
n= 1,056



Mobile Response Stabilization Services (MRSS) Dispatched

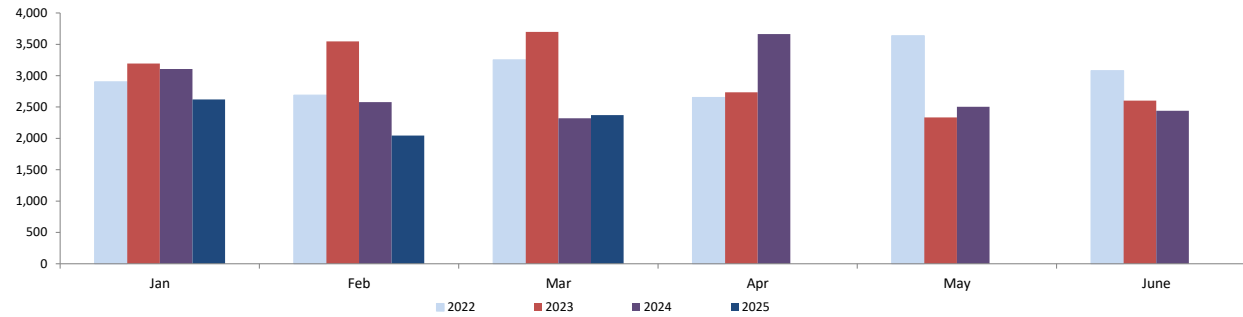


PerformCare Total Calls



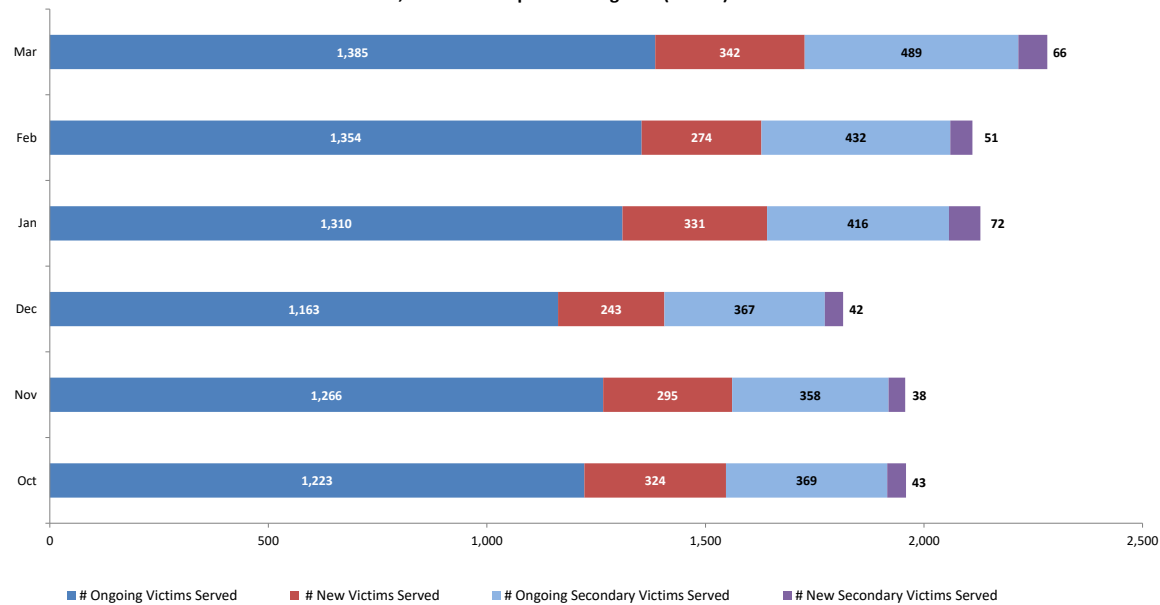
Section V: Family & Community Partnerships

Family Success Centers - Families Served



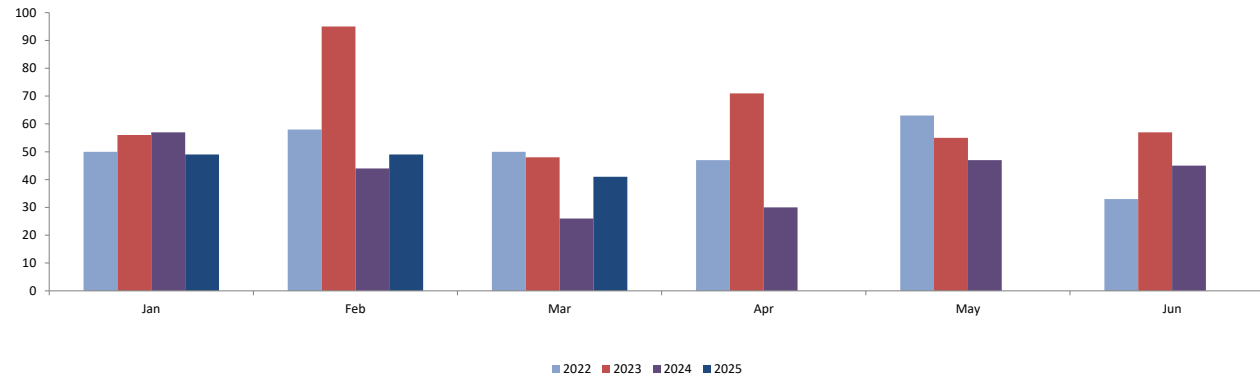
Section VI: Division on Women

Sexual Assault, Abuse and Rape Care Programs (SAARC)

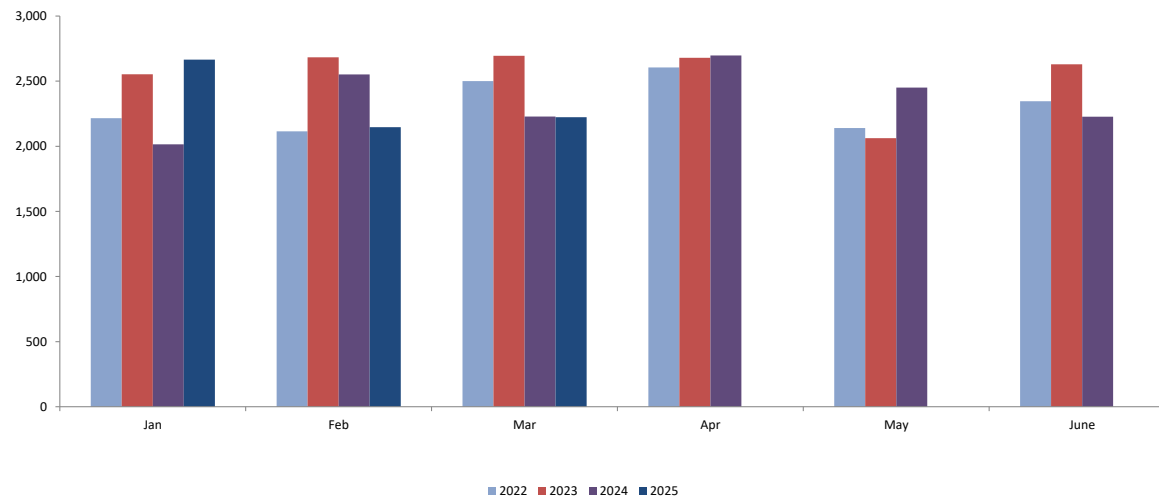


Section VI: Division on Women

**Residential Domestic Violence Programs:
Victims' Average Length of Stay (days)**



**Domestic Violence Services - Adults and Children
Admitted to Residential and Non-Residential Services
Total New Clients**



Worker and Office Caseloads by Worker Type and by Local Office - April 2025

	<div><div></div> At or Above Statewide Performance</div>		<div><div></div> Below Statewide Performance</div>			
Local Office	¹ Intake		² Permanency		³ Adoption	
	Worker Compliance	Office Compliant? Yes/No	Worker Compliance	Office Compliant? Yes/No	Worker Compliance	Office Compliant? Yes/No
Atlantic East	97%	Yes	100%	Yes	100%	Yes
Atlantic West	90%	Yes	100%	Yes	100%	Yes
Bergen Central	100%	Yes	100%	Yes	100%	Yes
Bergen South	97%	Yes	100%	Yes	100%	Yes
Burlington East	100%	Yes	100%	Yes	100%	Yes
Burlington West	57%	No	100%	Yes	50%	No
Camden Central	33%	No	100%	Yes	100%	Yes
Camden East	78%	No	100%	Yes	100%	Yes
Camden North	88%	No	100%	Yes	100%	Yes
Camden South	90%	Yes	100%	Yes	100%	Yes
Cape May	100%	Yes	100%	Yes	100%	Yes
Cumberland East	71%	No	100%	Yes	100%	Yes
Cumberland West	85%	No	100%	Yes	100%	Yes
Essex Central	100%	Yes	100%	Yes	100%	Yes
Essex North	57%	No	100%	Yes	100%	Yes
Essex South	100%	Yes	100%	Yes	100%	Yes
Gloucester East	100%	Yes	100%	Yes	50%	No
Gloucester West	92%	Yes	100%	Yes	100%	Yes
Hudson Central	75%	No	100%	Yes	100%	Yes
Hudson North	100%	Yes	100%	Yes	100%	Yes
Hudson South	100%	Yes	100%	Yes	100%	Yes
Hudson West	100%	Yes	100%	Yes	100%	Yes
Hunterdon	100%	Yes	100%	Yes	100%	Yes
Mercer North	95%	Yes	100%	Yes	100%	Yes
Mercer South	100%	Yes	100%	Yes	100%	Yes
Middlesex Central	74%	No	100%	Yes	100%	Yes
Middlesex Coastal	100%	Yes	100%	Yes	100%	Yes
Middlesex West	93%	Yes	100%	Yes	100%	Yes
Monmouth North	100%	Yes	100%	Yes	100%	Yes
Monmouth South	96%	Yes	100%	Yes	100%	Yes
Morris East	81%	No	100%	Yes	100%	Yes
Morris West	100%	Yes	100%	Yes	100%	Yes
Newark Center City	100%	Yes	100%	Yes	100%	Yes
Newark Northeast	96%	Yes	100%	Yes	100%	Yes
Newark South	73%	No	100%	Yes	100%	Yes
Ocean North	100%	Yes	100%	Yes	100%	Yes
Ocean South	100%	Yes	100%	Yes	100%	Yes
Passaic Central	94%	Yes	100%	Yes	100%	Yes
Passaic North	85%	No	100%	Yes	100%	Yes
Salem	93%	Yes	100%	Yes	100%	Yes
Somerset	88%	No	100%	Yes	100%	Yes
Sussex	100%	Yes	100%	Yes	100%	Yes
Union Central	95%	Yes	100%	Yes	100%	Yes
Union East	78%	No	100%	Yes	100%	Yes
Union West	74%	No	100%	Yes	100%	Yes
Warren	100%	Yes	100%	Yes	100%	Yes
Statewide ⁴	90%	Yes	100%	Yes	98%	Yes

1 Intake

- Intake worker compliance: % of workers with no more than 8 new intakes in the month, no more than 12 Primary families and no more than a total of 14 families.

- Office Compliance: % of offices that meet the caseload standards of no more than 8 new intakes and 12 total families.

2 Permanency

- Permanency worker compliance: % of workers who meet the caseload standards of no more than 15 families and 10 children in placement.

- Office Compliance: % of offices that meet the caseload standards of no more than 15 families and 10 children in placement.

3 Adoption

- Adoption worker compliance: % of adoption workers who meet the caseload standards of 15 or fewer children.

- Office Compliance: % of offices that meet the caseload standards of 15 or fewer children.

- Offices with blank data do not carry adoption caseloads, however adoption cases in those offices are handled by other offices in that area.

4 Statewide

- Performance is based on total workers in compliance for the month, not an average. Percentages are rounded to the whole number.

CP&P Key Performance Indicators by Local Office - 6 Months View														
Local Office	CPS Investigations Completed w/ 60 Days	CPS Investigations Completed w/ 90 Days	Monthly Staff Visits w/Children in Placement	Visits w/Children in Placement 2x/Month for 2 Months	Visits with Parents of Children in Placement 2x/Month	Weekly Parent/Child Visits-Children with Goal of Reunification	Bi-weekly Parent-Child Visits-Children with Goal of Reunification	Monthly Sibling Visits	Initial Case Plans w/ 30 Days of Placement	6 Months Review of Case Plans for Children in Placement	Initial Family Team Meetings w/ 45 days of Placement	3 Family Team Meetings in the first 12 months of Placement	3 Family Team Meetings after 12 months in Placement	2 Family Team Meeting after 12 months in Placement
Atlantic East	89%	94%	93%	87%	60%	61%	72%	78%	100%	100%	77%	64%	100%	100%
Atlantic West	88%	97%	94%	78%	58%	66%	78%	69%	100%	100%	73%	73%	75%	93%
Bergen Central	91%	97%	99%	92%	87%	77%	90%	97%	75%	100%	100%	83%		
Bergen South	87%	94%	97%	80%	84%	93%	83%	84%	83%	92%	78%	92%		100%
Burlington East	78%	95%	97%	45%	70%	69%	76%	73%	94%	97%	57%	33%	0%	71%
Burlington West	69%	90%	85%	61%	51%	55%	70%	69%	76%	87%	22%	3%	54%	50%
Camden Central	80%	91%	84%	62%	56%	67%	77%	85%	82%	92%	9%	53%	78%	100%
Camden East	62%	85%	92%	79%	75%	69%	79%	78%	100%	93%	36%	78%	50%	95%
Camden North	71%	90%	94%	74%	62%	66%	78%	93%	96%	96%	70%	47%	57%	100%
Camden South	71%	97%	92%	85%	72%	65%	77%	89%	76%	91%	62%	82%	0%	100%
Cape May	84%	93%	94%	95%	59%	47%	62%	81%	70%	100%	80%	100%	100%	100%
Cumberland East	68%	86%	93%	94%	81%	94%	88%	92%	94%	100%	56%	100%		100%
Cumberland West	62%	90%	96%	96%	83%	82%	88%	91%	100%	100%	90%	100%		100%
Essex Central	86%	96%	92%	79%	69%	56%	69%	100%	98%	98%	13%	56%	100%	62%
Essex North	82%	92%	92%	100%	69%	38%	30%	86%	100%	100%	17%	14%		50%
Essex South	82%	91%	95%	69%	36%	32%	48%	86%	100%	96%	67%	33%	0%	44%
Gloucester East	93%	97%	90%	82%	43%	63%	77%	85%	100%	94%	33%	43%	100%	100%
Gloucester West	75%	88%	97%	91%	82%	77%	86%	83%	100%	100%	50%	80%	33%	89%
Hudson Central	66%	86%	97%	88%	76%	72%	80%	51%	100%	92%	100%	63%	43%	100%
Hudson North	82%	100%	100%	100%	82%	79%	82%	92%	100%	100%	75%	100%		100%
Hudson South	85%	94%	97%	91%	72%	51%	77%	91%	100%	95%	29%	50%	0%	86%
Hudson West	89%	96%	94%	91%	73%	30%	69%	78%	83%	82%	33%	0%	100%	63%
Hunterdon	88%	98%	100%	100%	76%	96%	78%	98%	100%	100%	20%	0%		100%
Mercer North	67%	88%	89%	79%	64%	52%	73%	54%	82%	90%	28%	38%	83%	62%
Mercer South	79%	91%	95%	67%	70%	69%	84%	76%	71%	82%	33%	67%	75%	78%
Middlesex Central	68%	89%	91%	88%	62%	79%	82%	76%	100%	100%	88%	60%	0%	0%
Middlesex Coastal	82%	95%	90%	81%	83%	82%	75%	78%	75%	100%	89%	56%		33%
Middlesex West	80%	94%	95%	89%	57%	56%	72%	84%	100%	100%	75%	60%	0%	100%
Monmouth North	97%	99%	97%	94%	79%	93%	90%	95%	100%	97%	79%	36%	100%	73%
Monmouth South	91%	98%	96%	88%	75%	71%	80%	88%	94%	100%	61%	100%	100%	100%
Morris East	75%	94%	94%	100%	94%	100%	90%	91%	100%	100%	100%	100%		100%
Morris West	85%	96%	93%	100%	93%	100%	81%	94%	100%	100%	100%	100%		100%
Newark Center City	81%	94%	99%	85%	90%	36%	60%	95%	100%	100%	45%	89%	100%	80%
Newark Northeast	74%	85%	79%	47%	22%	53%	57%	79%	100%	99%	0%	7%	0%	85%
Newark South	87%	94%	99%	85%	81%	59%	70%	92%	82%	100%	67%	50%	67%	100%
Ocean North	91%	97%	98%	77%	78%	70%	83%	89%	100%	97%	47%	42%	0%	100%
Ocean South	94%	97%	96%	91%	66%	72%	87%	83%	95%	92%	93%	91%	100%	100%
Passaic Central	88%	97%	97%	100%	85%	100%	87%	96%	100%	100%	100%	100%	100%	100%
Passaic North	93%	96%	93%	98%	93%	100%	82%	91%	100%	100%	100%	100%	100%	100%
Salem	59%	86%	96%	100%	79%	69%	81%	88%	100%	100%	100%	100%		100%
Somerset	75%	91%	93%	100%	51%	59%	85%	89%	100%	100%	67%	18%	0%	75%
Sussex	94%	99%	96%	100%	94%	100%	84%	100%	100%	100%	100%	100%		100%
Union Central	74%	90%	96%	86%	41%	86%	86%	100%	89%	100%	100%	67%	0%	100%
Union East	92%	98%	100%	100%	81%	75%	80%	91%	100%	100%	100%	83%	100%	80%
Union West	74%	94%	90%	71%	51%	58%	57%	80%	100%	98%	88%	80%		94%
Warren	57%	79%	82%	58%	57%	63%	79%	77%	93%	88%	35%	20%		60%
Statewide	81%	93%	93%	81%	67%	67%	76%	83%	93%	96%	59%	60%	59%	87%
Blank cells mean that the office did not have any children eligible for that measure during that period.														
These data points are preliminary and subject to change based on user data entry.														
Description of the Measure												Time Period Analyzed		
CPS Investigations Completed w/ 60 Days												September 24 - February 25		
CPS Investigations Completed w/ 90 Days												September 24 - February 25		
Monthly Staff Visits w/Children in Placement												November 24 - April 25		
Visits w/Children in Placement 2x/Month for 2 Months												September 24 - February 25		
Visits with Parents of Children in Placement 2x/Month												November 24 - April 25		
Weekly Parent/Child Visits-Children with Goal of Reunification												03/22/2025 - 04/26/2025		
Bi-weekly Parent-Child Visits-Children with Goal of Reunification												November 24 - April 25		
Monthly Sibling Visits												November 24 - April 25		
Initial Case Plans w/ 30 Days of Placement												November 24 - April 25		
6 Months Review of Case Plans for Children in Placement												November 24 - April 25		
Initial Family Team Meetings w/ 45 days of Placement												October 24 - March 25		
3 Family Team Meetings in the first 12 months of Placement												November 24 - April 25		
3 Family Team Meetings after 12 months in Placement												November 24 - April 25		
2 Family Team Meeting after 12 months in Placement												November 24 - April 25		