



NEW JERSEY DEPARTMENT OF
CHILDREN AND FAMILIES

Commissioner's Monthly Report July-25

Christine Beyer
Commissioner

Monthly Report

Table of Contents

TABLE OF CONTENTS	2
KEY PERFORMANCE INDICATORS	3
DCF AT A GLANCE - DASHBOARD	4
SECTION I: CHILD PROTECTION & PERMANENCY	5-7
SECTION II: ADOLESCENT SERVICES	8
SECTION III: INSTITUTIONAL ABUSE INVESTIGATION UNIT	8
SECTION IV: CHILDREN'S SYSTEM OF CARE	9
SECTION V: FAMILY & COMMUNITY PARTNERSHIPS	10
SECTION VI: DIVISION ON WOMEN	10-11
ADDENDUM 1: CASELOADS	12
ADDENDUM 2: CP&P KEY PERFORMANCE INDICATORS BY LOCAL OFFICE	13

¹Key Performance Indicators
On or About May 31st, 2025

	Observed Month	Rolling 12 Month Average	Performance	% Difference
Investigation Timeliness CP&P 60 Days	March '25	82%	78%	-4%
Investigation Timeliness CP&P 90 Days	March '25	94%	92%	-2%
CW Visits Child 2x/Month for first 2 Months in Placement	March '25	82%	77%	-5%
CW Visits Child Monthly (at placement site) ³	May '25	92%	92%	0%
CW Visits with Parent 2x/Month - Goal of Reunification	May '25	67%	64%	-3%
Parent-Child Weekly Visit ²	May '25	66%	63%	-3%
Parent-Child Visits Bi-weekly	May '25	75%	74%	-1%
Child Visit with Siblings	May '25	82%	73%	-9%
Initial Case Plans	May '25	88%	85%	-3%
Ongoing Case Plans	May '25	96%	95%	-1%
Initial FTMs within 45 days	April '25	63%	57%	-6%
Subsequent FTMs within 12 Months	May '25	64%	56%	-8%
Subsequent FTMs after 12 Months - Reunification Goal (n=11)	May '25	62%	55%	-7%
Subsequent FTMs after 12 Months - Other than Reunification Goal	May '25	84%	71%	-13%
Ind. Living Assessments 14-18 Years Old	May '25	83%	78%	-5%
Caseloads: Intake	May '25	94%	90%	-4%
Caseloads: Permanency	May '25	100%	100%	0%
Caseloads: Adoption	May '25	99%	99%	0%
Supervisor Worker Ratio	May '25	100%	100%	0%
Investigation Timeliness IAIU 60 Days	April '25	72%	81%	9%
Caseloads: IAIU Investigators	April '25	99%	100%	1%
<div> <div></div> Performance is similar to or above the 12 months rolling average </div> <div> <div></div> Performance is below the 12 months rolling average </div>				

¹ In certain measures, performance excludes appropriate instances as per policy where events such as visits or family team meetings did not occur.

² Performance for Parent-Child Weekly Visits is calculated based on the average number of children with weekly visits over the average total number of eligible children for weekly visits.

³ Caseworker visits with Children in Placement (all locations) **May 2025: 96%.**

DCF At A Glance Dashboard

On or About May 31st, 2025

DCF At A Glance		CSOC ⁴ Quick Facts	
DCF: Total Children Served in the Month ¹	75,657	Youth Open with CSOC ⁵ (unduplicated count)	40,865
CP&P: Children/Youth Served	34,792	DD Eligible Children (unduplicated count)	14,054
Children Under 18	32,958	MRSS: Dispatches in the month	3,017
OOH Setting (<18)	2,921	MRSS: Interventions ⁶ (January 2025)	2,861
In-Home Setting (<18)	30,037	Remained in Same Living Situation	95%
Youth 18-21	1,834	Unable to Stabilize in home	1%
OOH Setting (>18)	199	Unknown (Plan not received)	4%
In-Home Setting (>18)	1,635	Care Management: Children Served	18,135
FCP: Total Clients Served ² (April)	6,443	OOH Settings : Children Served ⁷ (BH, I/DD, and SU)	1,071
DOW: Total Clients Served (April) (Excludes Displaced Homemaker)	4,709	Behavioral Health Placed out of State	0
DCF: Families Served in the Month ³	23,292	Intellectual/Developmental Disabilities Placed out of State	47
CP&P	17,225	PerformCare Calls	9,772
FCP (Family Success Centers & Home Visiting) (April)	6,067	DD Related Calls	2,326

CP&P Quick Facts		FCP & DoW Quick Facts ⁹	
Hotline Referrals	15,655	FSCs: Families Served (April 2025)	2,314
CPS Reports	35%	Home Visiting: Families Served (April 2025)	3,753
CWS Referrals	7%	SBYSP: Students Receiving Evidence-Based Prevention Programs (Apr 2025)	376
Number of Human Trafficking Referrals ⁸ (May 2025)	10		
Response Timeliness	98%	DV Services: Clients Served (April 2025)	2,402
Monthly Staff Contacts/Children OOH-Placement Site	92%	Residential	14%
Entries to Care	163	Non-Residential	86%
Exits from Care	114		
Subsidized Adoptions/KLG (Includes Subsidized Adoptions and subsidized KLGs)	11,940	SAARC: Clients Served (April 2025)	2,307

¹ Some children may be served by both CP&P and CSOC and are over-represented in the final count of children served in the month.

² FCP measures clients served in SBYSP and DV Services. Since Family Success Centers and Home Visitation programs report data in terms of families served, each family is assumed to have at least one client.

³ Families served by DCF includes CP&P families and FCP families. FCP families served data has a one month lag.

⁴ CSOC Children may receive multiple services and are counted multiple times.

⁵ The definition for "Youth Open with CSOC" reflects youth who are involved and eligible to receive services through CSOC.

⁶ Mobile Response Interventions has a five month lag to allow for the data to settle for accurate reporting.

⁷ As of October 2022, the CSOC OOH sections will now include all CSOC Out of Home Treatment Settings (Behavioral Health, Intellectual/Developmentally Disabled, and Substance Use). This includes updating the totals reported, a new 3-year OOH trend report, and a monthly OOH report grouped by similar treatment settings.

⁸ The cumulative number of human trafficking referrals between **November 2013 and May 2025 was 1,504**. This figure could change depending on when the data is extracted.

⁹ FCP quick facts are based on new families for FSCs, but both new and ongoing clients for Home Visiting and SBYSP. DoW quick facts are based on new clients for DV Services, but both new and ongoing clients served for SAARC, Displaced Homemakers and Rape Prevention Education.

Note: OOH Behavioral Health Settings: Children Served - Excludes Youth in Detention Alternatives and Diagnostic Settings.

Effective June 2017, All DoW data is reported Monthly except for Residential DV shelters and Unmet Needs Data.

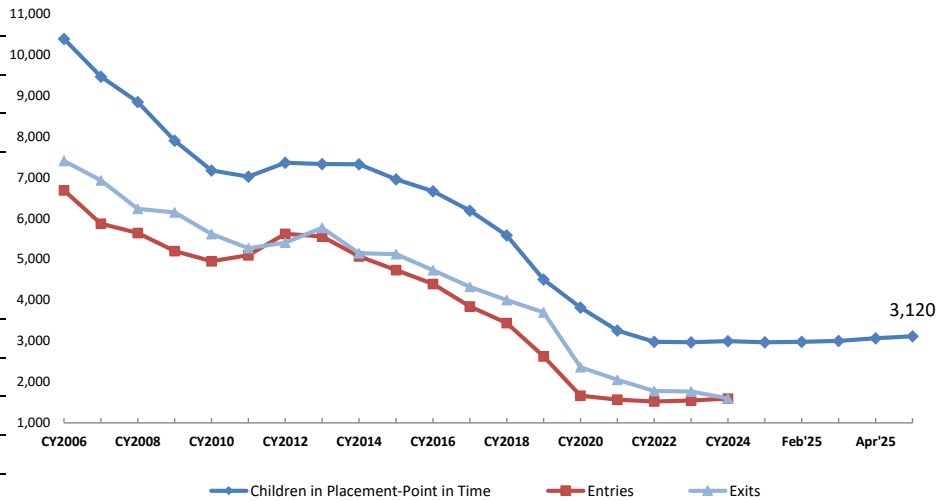
Note: Due to system upgrades within DCF, Displaced Homemaker data will not be available beginning November 2021. DCF will resume reporting on these data after the new systems have been updated with these data.

Section I: Child Protection & Permanency

CP&P Quick Facts

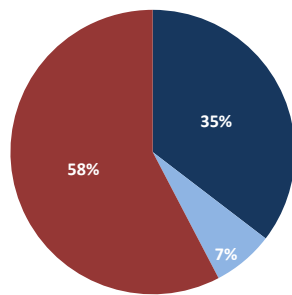
	As of May 31st 2025	Δ from May '24
Families Under CP&P Supervision	17,225	0%
Children Under CP&P Supervision	34,792	2%
Children Receiving CP&P In-Home Services	31,672	2%
Children in CP&P Out-of-Home Placement		
Resource Family (non-Kin)	40% 1,260	
Resource Family Kinship	46% 1,433	
Group and Residential	12% 387	
Independent Living	1% 40	
Children Legally Free for Adoption (Excludes TPR Appeals)	426	0%
Finalized Adoptions to date (CY2025) - As of 05/31/2025	88	-28%
Children in Subsidized Kinship Legal Guardianship	1,273	1%
Children in Subsidized Adoptions	10,667	-7%
Entries to Care	163	3%
Exits from Care	114	-9%

Children in Out-of-Home Placement:
Annual Entries, Exits and Monthly Point in Time Children in Placement



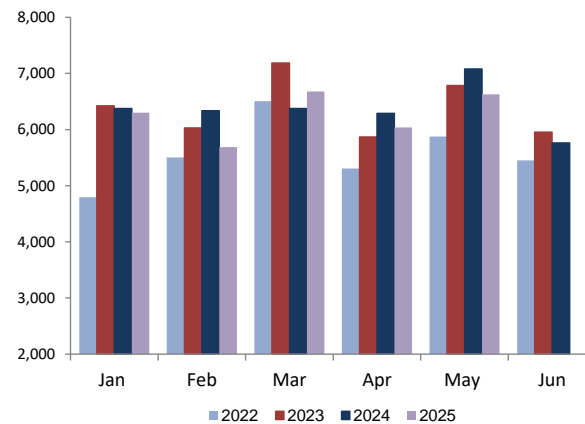
Total SCR Intakes

n = 15,655
May 2025

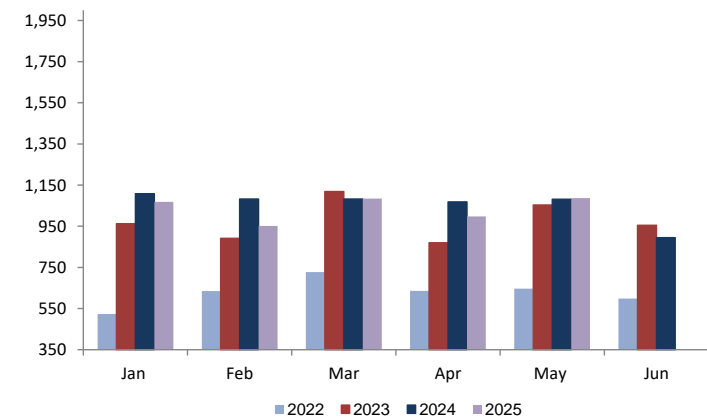


- CPS Reports
- CWS Referrals
- Non CPS/CWS Child Related Calls

CPS & CWS Referrals

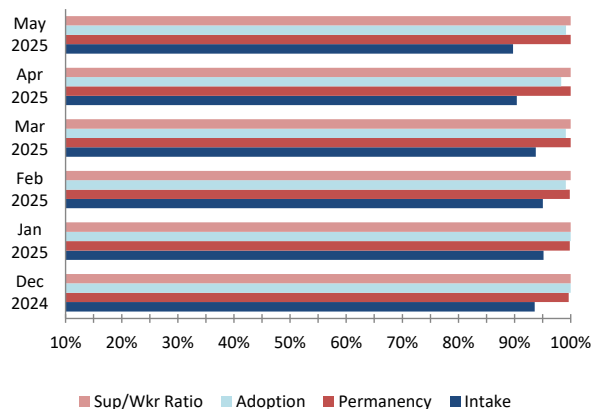


CWS Referrals Assigned to Local Offices

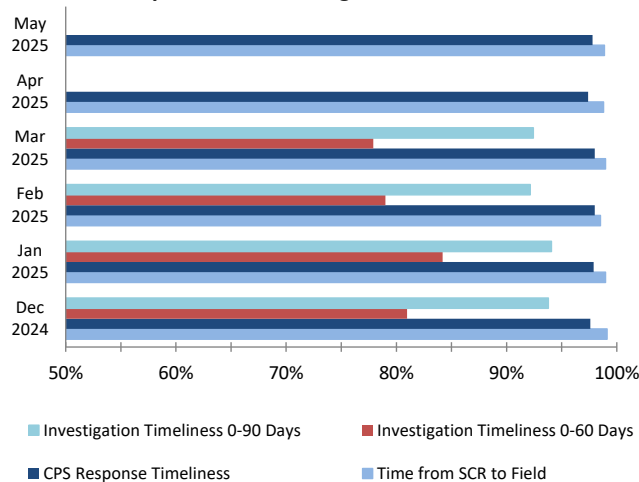


Section I: Child Protection & Permanency

**Caseload Compliance
(Individual Worker Level)**

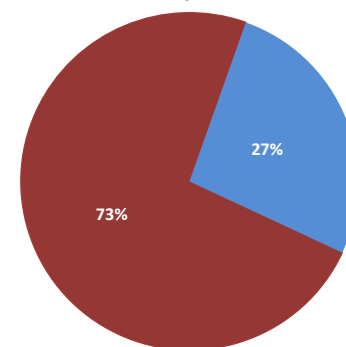


Response and Investigation Timeliness

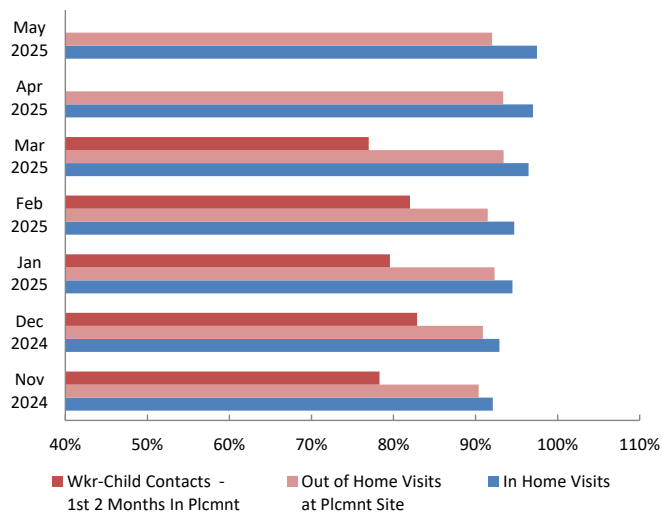


Referrals to Early Intervention

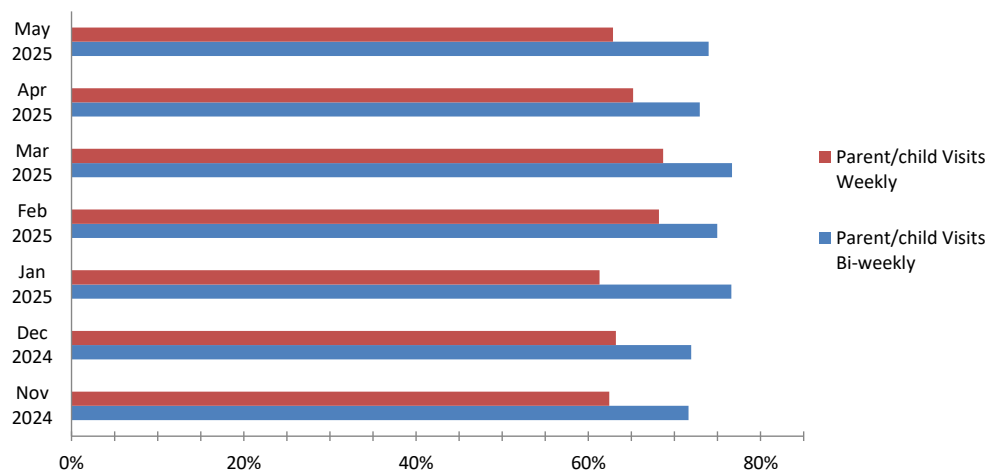
Oct 2024 - May 2025
n = 264



Worker - Child Visits

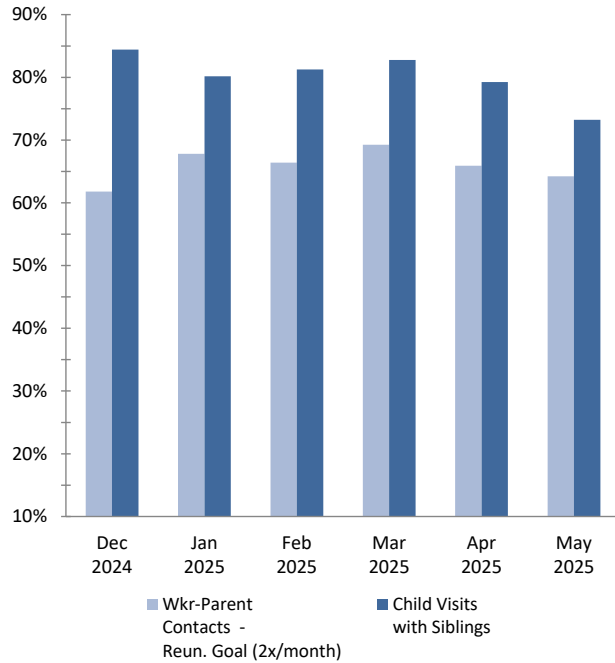


Parent - Child Visits

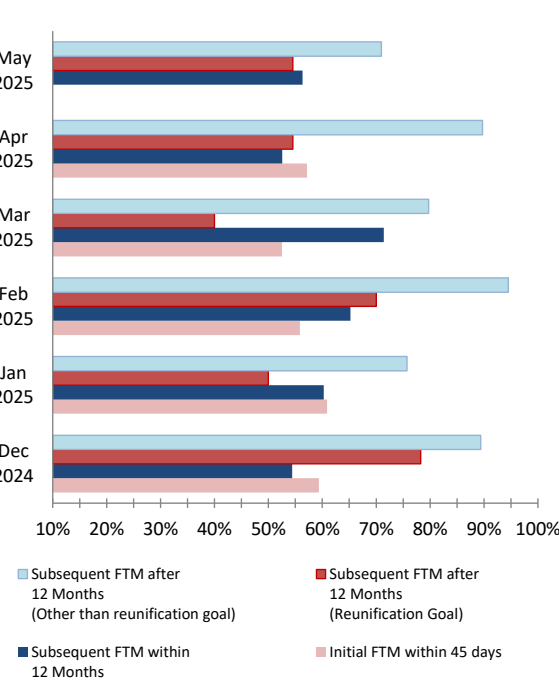


Section I: Child Protection & Permanency

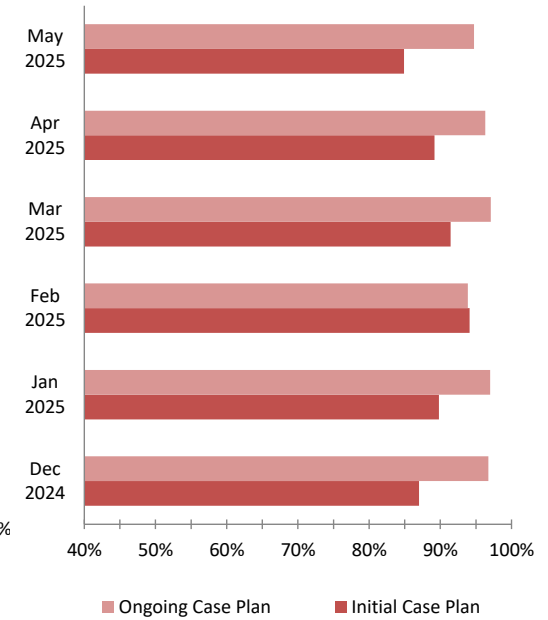
Worker- Parent Visits & Sibling Visits



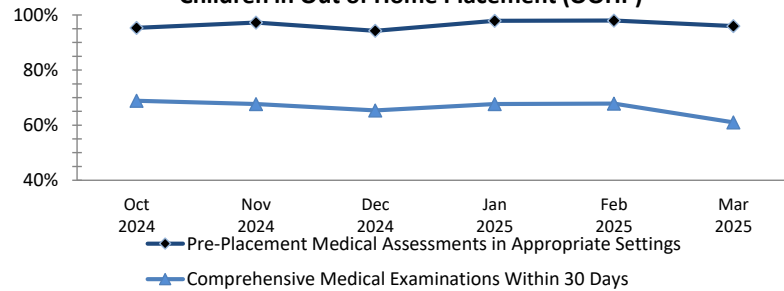
Initial & Subsequent Family Team Meetings



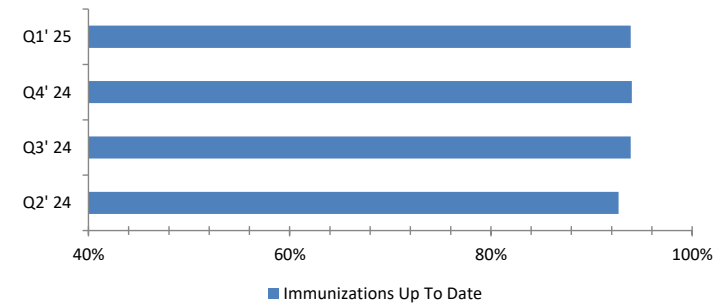
Initial & Ongoing Case Plans



Medical Assessments for
Children in Out of Home Placement (OOHP)



Immunizations for
Children in OOHP



Section II: Adolescent Services

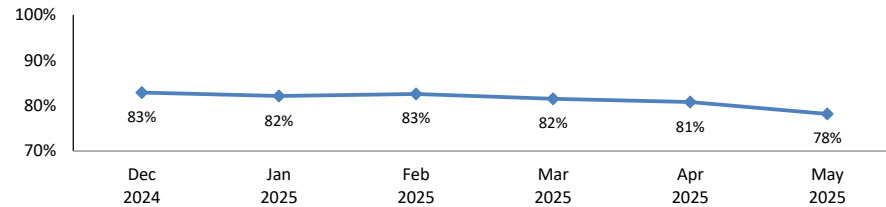
OAS Quick Facts (May 2025)
Youth 18-23

Youth 18-23 years old served by CP&P¹			1,834
Youth served "In Home" living with a parent/relative or living independently²			1,635
Youth served "Out-of-Home"			199
Resource Family (non-Kin)	(34.2%)	68	
Resource Family Kinship	(21.1%)	42	
Congregate Care Setting	(26.6%)	53	
Independent Living	(18.1%)	36	
Youth Receiving Adoption or KLG Subsidy			986

¹ The data includes all 18-21 year olds who are active participants in an open CP&P case as of the end of the month.

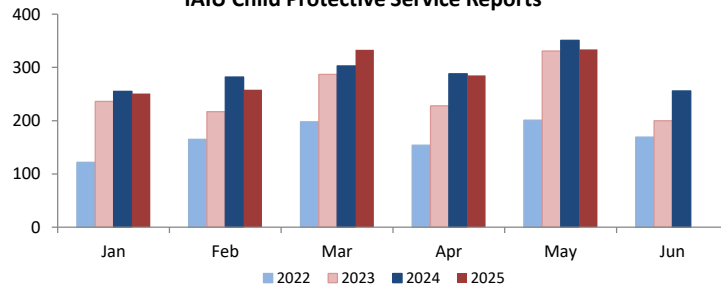
² The terms "out-of-home" and "in-home" may not be appropriate for all 18-21 year olds. Youth identified as "in-home" can either be residing with a parent/relative, or living independently. Any of these youth may be receiving services. These definitions are currently being reviewed to better understand how we capture DCF's work with this population. The goal of this ongoing work is to create three meaningful categories for 18-21 year olds 1) Youth in a formal out-of-home placement setting, 2) Youth that achieved permanency, and 3) Youth that never achieved permanency.

Completed Independent Living Assessments
of Youth Ages 14-18 years



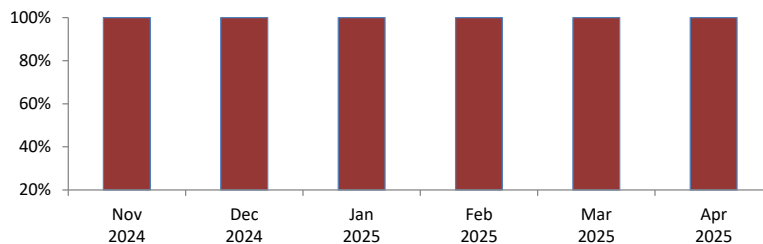
Section III: Institutional Abuse Investigation Unit

IAIU Child Protective Service Reports

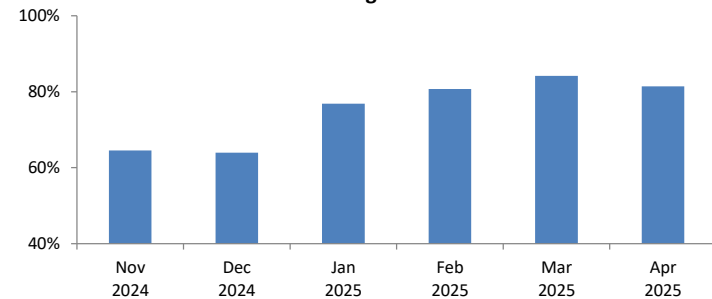


IAIU Caseload Report
Statewide

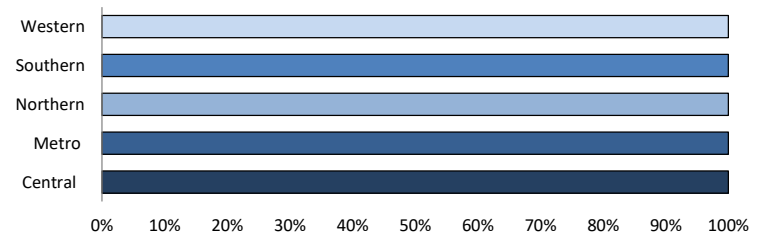
No more than 8 new investigations and 12 cases/month



IAIU Investigation Timeliness



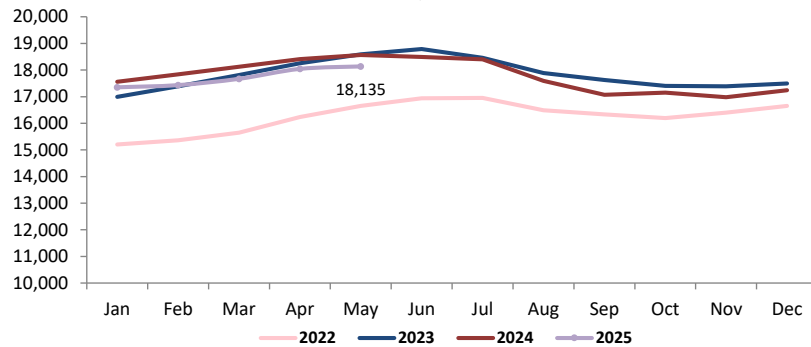
IAIU Caseload Report by Region
April 2025



Section IV: Children's System of Care

Children in Care Management

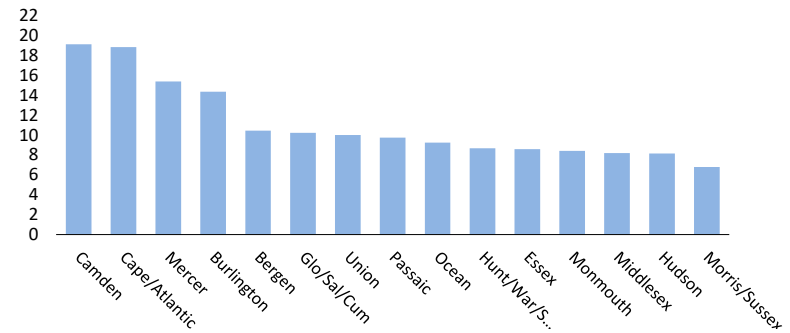
as of May 31st 2025



Rate of Children in Care Management by Service Area

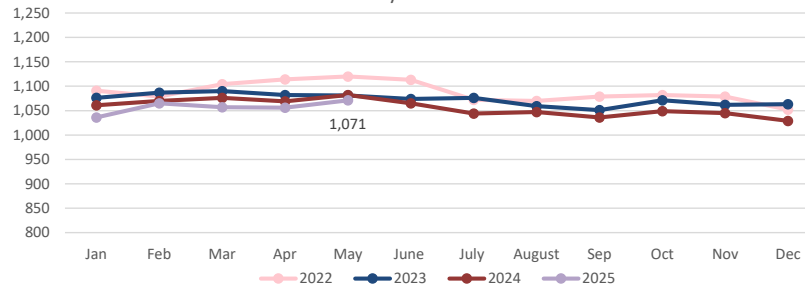
as of May 31st 2025

n=18,135



Children in Out of Home Treatment Settings

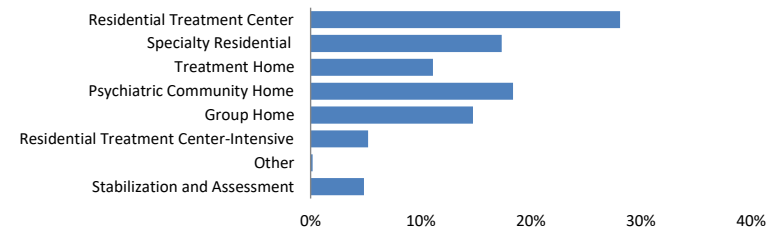
as of May 31st 2025



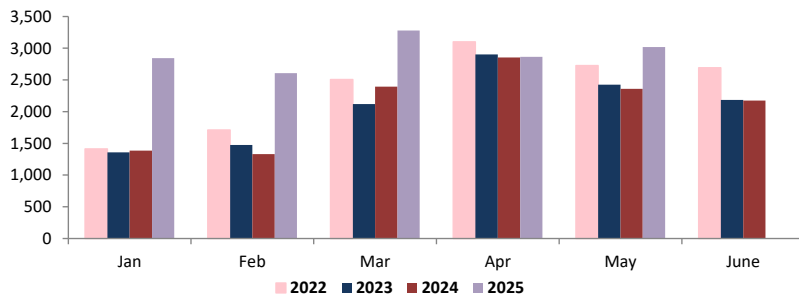
Children in Out-of-Home Treatment Settings

as of May 31st 2025

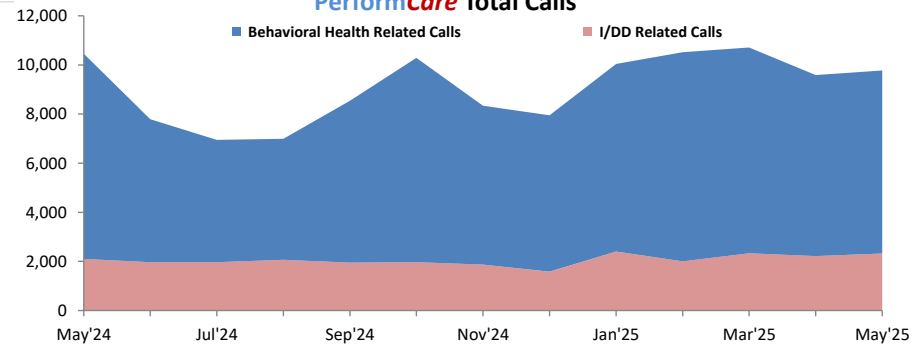
n= 1,071



Mobile Response Stabilization Services (MRSS) Dispatched

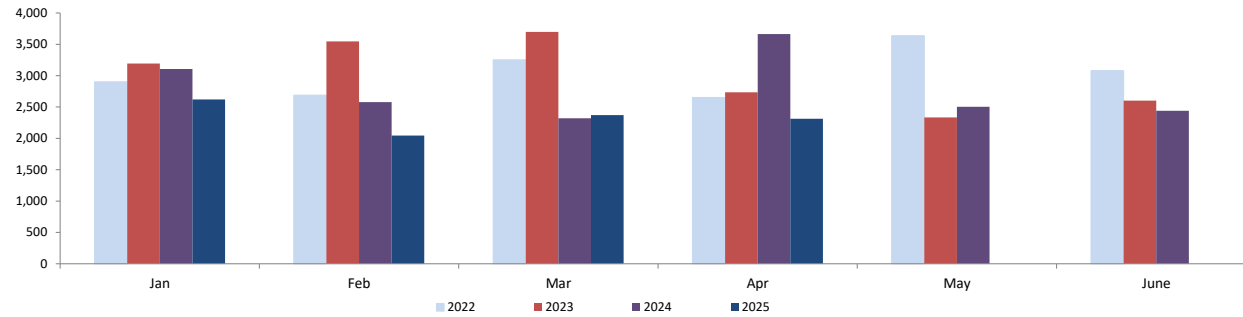


PerformCare Total Calls



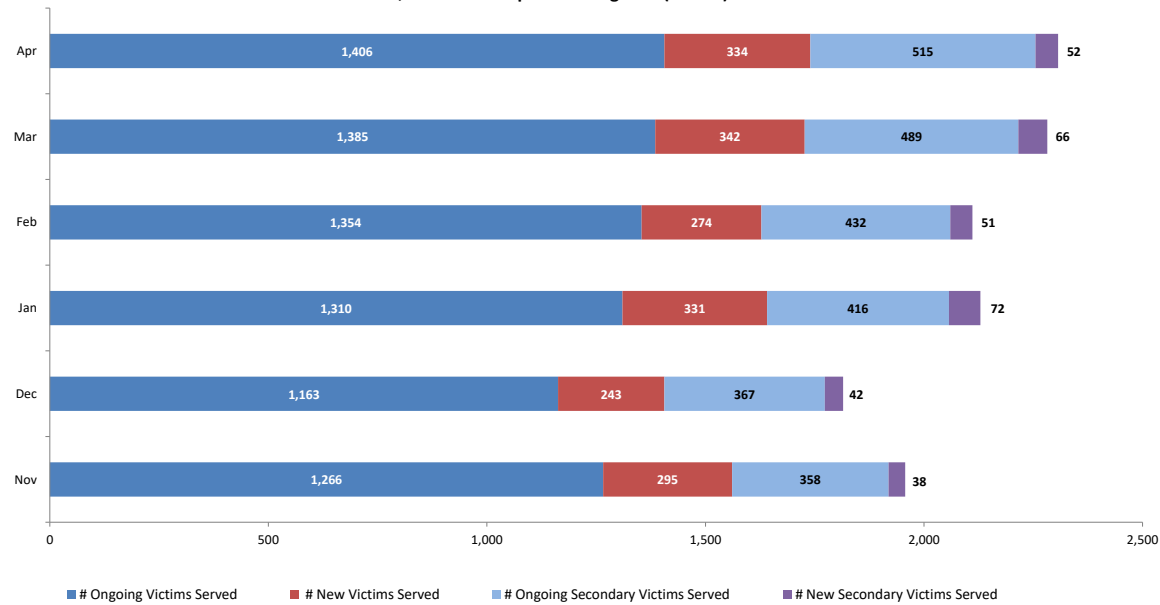
Section V: Family & Community Partnerships

Family Success Centers - Families Served



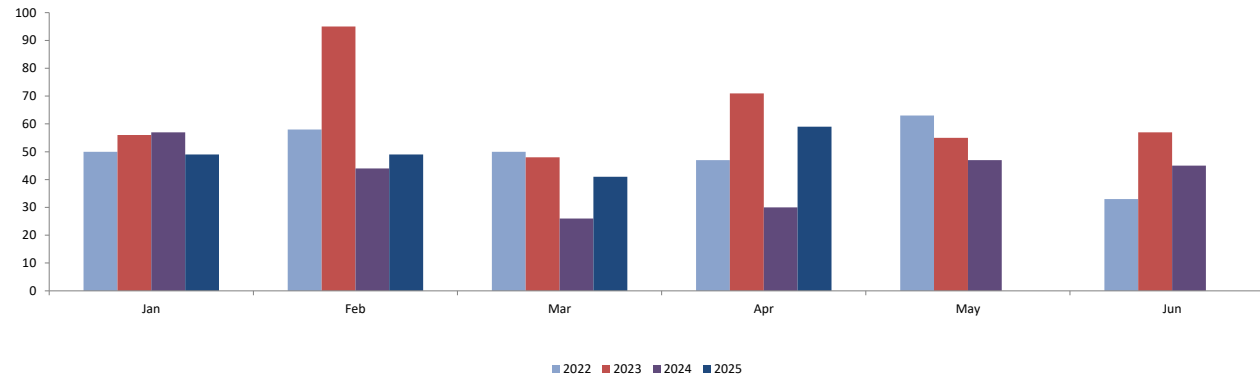
Section VI: Division on Women

Sexual Assault, Abuse and Rape Care Programs (SAARC)

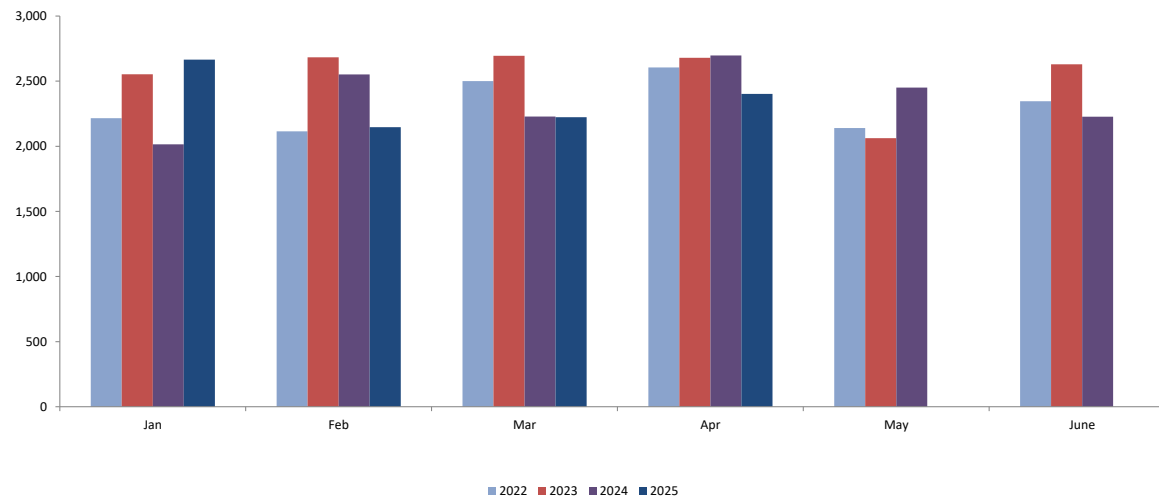


Section VI: Division on Women

**Residential Domestic Violence Programs:
Victims' Average Length of Stay (days)**



**Domestic Violence Services - Adults and Children
Admitted to Residential and Non-Residential Services
Total New Clients**



Worker and Office Caseloads by Worker Type and by Local Office - May 2025

	<div><div></div> At or Above Statewide Performance</div>		<div><div></div> Below Statewide Performance</div>			
Local Office	¹ Intake		² Permanency		³ Adoption	
	Worker Compliance	Office Compliant? Yes/No	Worker Compliance	Office Compliant? Yes/No	Worker Compliance	Office Compliant? Yes/No
Atlantic East	100%	Yes	100%	Yes	100%	Yes
Atlantic West	100%	Yes	100%	Yes	100%	Yes
Bergen Central	85%	No	100%	Yes	100%	Yes
Bergen South	100%	Yes	100%	Yes	100%	Yes
Burlington East	100%	Yes	100%	Yes	100%	Yes
Burlington West	90%	Yes	100%	Yes	50%	No
Camden Central	81%	No	100%	Yes	100%	Yes
Camden East	86%	No	100%	Yes	100%	Yes
Camden North	79%	No	100%	Yes	100%	Yes
Camden South	65%	No	100%	Yes	100%	Yes
Cape May	100%	Yes	100%	Yes	100%	Yes
Cumberland East	77%	No	100%	Yes	100%	Yes
Cumberland West	58%	No	100%	Yes	100%	Yes
Essex Central	100%	Yes	100%	Yes	100%	Yes
Essex North	60%	No	100%	Yes	100%	Yes
Essex South	89%	No	100%	Yes	100%	Yes
Gloucester East	100%	Yes	100%	Yes	100%	Yes
Gloucester West	92%	Yes	100%	Yes	100%	Yes
Hudson Central	100%	Yes	100%	Yes	100%	Yes
Hudson North	95%	Yes	100%	Yes	100%	Yes
Hudson South	100%	Yes	100%	Yes	100%	Yes
Hudson West	100%	Yes	100%	Yes	100%	Yes
Hunterdon	100%	Yes	100%	Yes	100%	Yes
Mercer North	76%	No	100%	Yes	100%	Yes
Mercer South	91%	Yes	100%	Yes	100%	Yes
Middlesex Central	76%	No	100%	Yes	100%	Yes
Middlesex Coastal	100%	Yes	100%	Yes	100%	Yes
Middlesex West	93%	Yes	100%	Yes	100%	Yes
Monmouth North	100%	Yes	100%	Yes	100%	Yes
Monmouth South	96%	Yes	100%	Yes	100%	Yes
Morris East	69%	No	100%	Yes	100%	Yes
Morris West	100%	Yes	100%	Yes	100%	Yes
Newark Center City	90%	Yes	100%	Yes	100%	Yes
Newark Northeast	96%	Yes	100%	Yes	100%	Yes
Newark South	60%	No	100%	Yes	100%	Yes
Ocean North	92%	Yes	100%	Yes	100%	Yes
Ocean South	100%	Yes	100%	Yes	100%	Yes
Passaic Central	81%	No	100%	Yes	100%	Yes
Passaic North	78%	No	100%	Yes	100%	Yes
Salem	86%	No	100%	Yes	100%	Yes
Somerset	83%	No	100%	Yes	100%	Yes
Sussex	100%	Yes	100%	Yes	100%	Yes
Union Central	96%	Yes	100%	Yes	100%	Yes
Union East	100%	Yes	100%	Yes	100%	Yes
Union West	91%	Yes	100%	Yes	100%	Yes
Warren	100%	Yes	100%	Yes	100%	Yes
Statewide ⁴	90%	Yes	100%	Yes	99%	Yes

1 Intake

- Intake worker compliance: % of workers with no more than 8 new intakes in the month, no more than 12 Primary families and no more than a total of 14 families.

- Office Compliance: % of offices that meet the caseload standards of no more than 8 new intakes and 12 total families.

2 Permanency

- Permanency worker compliance: % of workers who meet the caseload standards of no more than 15 families and 10 children in placement.

- Office Compliance: % of offices that meet the caseload standards of no more than 15 families and 10 children in placement.

3 Adoption

- Adoption worker compliance: % of adoption workers who meet the caseload standards of 15 or fewer children.

- Office Compliance: % of offices that meet the caseload standards of 15 or fewer children.

- Offices with blank data do not carry adoption caseloads, however adoption cases in those offices are handled by other offices in that area.

4 Statewide

- Performance is based on total workers in compliance for the month, not an average. Percentages are rounded to the whole number.

CP&P Key Performance Indicators by Local Office - 6 Months View														
Local Office	CPS Investigations Completed w/ 60 Days	CPS Investigations Completed w/ 90 Days	Monthly Staff Visits w/Children in Placement	Visits w/Children in Placement 2x/Month for 2 Months	Visits with Parents of Children in Placement 2x/Month	Weekly Parent/Child Visits-Children with Goal of Reunification	Bi-weekly Parent-Child Visits-Children with Goal of Reunification	Monthly Sibling Visits	Initial Case Plans w/ 30 Days of Placement	6 Months Review of Case Plans for Children in Placement	Initial Family Team Meetings w/ 45 days of Placement	3 Family Team Meetings in the first 12 months of Placement	3 Family Team Meetings after 12 months in Placement	2 Family Team Meeting after 12 months in Placement
Atlantic East	89%	95%	91%	85%	53%	67%	74%	73%	100%	100%	71%	50%	50%	87%
Atlantic West	87%	95%	94%	83%	59%	70%	79%	73%	100%	100%	71%	83%	75%	92%
Bergen Central	90%	98%	95%	88%	83%	72%	84%	95%	56%	100%	83%			
Bergen South	88%	94%	96%	80%	82%	90%	86%	88%	89%	91%	50%	93%		100%
Burlington East	77%	95%	98%	45%	74%	70%	82%	76%	95%	97%	50%	19%	0%	83%
Burlington West	70%	90%	85%	67%	50%	50%	70%	67%	65%	87%	14%	3%	50%	45%
Camden Central	78%	90%	84%	55%	53%	61%	80%	84%	79%	88%	7%	35%	78%	100%
Camden East	62%	85%	93%	88%	77%	67%	84%	76%	100%	90%	45%	82%	50%	95%
Camden North	67%	87%	92%	71%	69%	65%	80%	94%	96%	100%	68%	60%	57%	100%
Camden South	73%	97%	91%	84%	77%	65%	77%	79%	79%	95%	58%	79%	0%	100%
Cape May	85%	93%	96%	100%	58%	53%	62%	79%	85%	100%	80%	100%	100%	100%
Cumberland East	68%	87%	94%	95%	80%	92%	88%	94%	100%	100%	78%	100%		100%
Cumberland West	63%	90%	97%	96%	79%	83%	87%	91%	80%	100%	100%	100%		100%
Essex Central	85%	96%	92%	65%	66%	43%	68%	81%	100%	98%	0%	56%	100%	45%
Essex North	77%	91%	92%	100%	60%	20%	28%	84%	100%	100%	20%	25%		60%
Essex South	80%	90%	94%	68%	35%	15%	43%	86%	100%	96%	67%	42%	0%	27%
Gloucester East	94%	97%	92%	80%	48%	69%	77%	86%	93%	92%	33%	44%	100%	100%
Gloucester West	72%	87%	98%	94%	86%	69%	85%	81%	100%	100%	17%	88%	33%	88%
Hudson Central	68%	86%	95%	83%	76%	68%	82%	54%	100%	90%	70%	60%	43%	100%
Hudson North	80%	97%	99%	100%	71%	73%	83%	89%	90%	100%	75%	100%		100%
Hudson South	82%	94%	99%	100%	73%	57%	78%	88%	100%	100%	22%	80%	0%	83%
Hudson West	89%	96%	95%	75%	65%	32%	58%	65%	83%	80%	33%	29%	100%	67%
Hunterdon	88%	98%	98%	100%	81%	93%	83%	87%	100%	100%	17%	0%		100%
Mercer North	68%	89%	89%	69%	62%	42%	69%	54%	70%	50%	29%	38%	67%	50%
Mercer South	81%	93%	93%	63%	67%	64%	80%	77%	76%	84%	13%	33%	75%	75%
Middlesex Central	68%	90%	90%	89%	73%	80%	81%	80%	85%	100%	75%	55%	0%	75%
Middlesex Coastal	81%	94%	91%	73%	83%	82%	76%	69%	71%	100%	87%	50%	100%	33%
Middlesex West	78%	93%	94%	92%	85%	58%	74%	87%	85%	100%	82%	60%	0%	100%
Monmouth North	97%	99%	97%	83%	84%	79%	90%	95%	100%	96%	94%	40%	100%	79%
Monmouth South	90%	99%	97%	93%	74%	69%	80%	85%	92%	100%	71%	89%	100%	100%
Morris East	75%	93%	94%	100%	94%	100%	89%	91%	100%	100%	100%	100%		100%
Morris West	83%	96%	95%	100%	97%	100%	71%	91%	100%	100%	100%	100%		100%
Newark Center City	76%	91%	99%	89%	87%	42%	57%	95%	88%	100%	33%	83%	100%	100%
Newark Northeast	72%	86%	79%	56%	23%	48%	55%	76%	100%	99%	0%	8%	0%	69%
Newark South	76%	88%	99%	86%	75%	52%	71%	94%	80%	100%	65%	67%	100%	100%
Ocean North	90%	96%	98%	83%	79%	64%	80%	86%	100%	97%	82%	57%	0%	100%
Ocean South	93%	97%	96%	92%	73%	78%	88%	80%	97%	98%	76%	90%	100%	100%
Passaic Central	87%	97%	97%	95%	85%	86%	98%	100%	100%	100%	100%	100%	100%	100%
Passaic North	93%	96%	93%	100%	95%	100%	86%	91%	100%	100%	100%	100%	100%	100%
Salem	61%	88%	93%	100%	76%	81%	86%	88%	100%	100%	100%	100%		100%
Somerset	75%	91%	93%	93%	52%	74%	81%	80%	100%	100%	63%	25%	0%	50%
Sussex	92%	98%	96%	100%	95%	100%	84%	100%	100%	100%	100%	100%		100%
Union Central	73%	89%	96%	73%	48%	95%	86%	99%	89%	100%	100%	67%	0%	100%
Union East	91%	97%	99%	100%	85%	93%	81%	88%	100%	100%	125%	75%	100%	57%
Union West	73%	94%	90%	75%	47%	35%	54%	70%	100%	96%	88%	80%	100%	92%
Warren	53%	76%	81%	58%	65%	57%	78%	73%	94%	94%	27%	25%		56%
Statewide	80%	93%	93%	80%	67%	63%	76%	81%	91%	96%	58%	60%	57%	84%
Blank cells mean that the office did not have any children eligible for that measure during that period.														
These data points are preliminary and subject to change based on user data entry.														
Description of the Measure												Time Period Analyzed		
CPS Investigations Completed w/ 60 Days												October 24 - March 25		
CPS Investigations Completed w/ 90 Days												October 24 - March 25		
Monthly Staff Visits w/Children in Placement												December 24 - May 25		
Visits w/Children in Placement 2x/Month for 2 Months												October 24 - March 25		
Visits with Parents of Children in Placement 2x/Month												December 24 - May 25		
Weekly Parent/Child Visits-Children with Goal of Reunification												04/26/2025 - 05/31/2025		
Bi-weekly Parent-Child Visits-Children with Goal of Reunification												December 24 - May 25		
Monthly Sibling Visits												December 24 - May 25		
Initial Case Plans w/ 30 Days of Placement												December 24 - May 25		
6 Months Review of Case Plans for Children in Placement												December 24 - May 25		
Initial Family Team Meetings w/ 45 days of Placement												November 24 - April 25		
3 Family Team Meetings in the first 12 months of Placement												December 24 - May 25		
3 Family Team Meetings after 12 months in Placement												December 24 - May 25		
2 Family Team Meeting after 12 months in Placement												December 24 - May 25		