



NEW JERSEY DEPARTMENT OF  
CHILDREN AND FAMILIES

## **Child Protection and Permanency**

### **Monthly Screening and Investigation Report January 2020**

Christine Norbut Beyer, MSW  
Commissioner



## Table of Contents

Table 1: NJ State Central Registry Activity: Monthly Child Abuse and Neglect Hotline Calls, Intakes and Assignments to Child Protection & Permanency (CP&P) Offices

---

Chart 1: CP&P Annual Trends in Child Protection Services (CPS) Reports and Child Welfare Services (CWS) Referrals

---

Table 2: Assignments to CP&P Offices: CPS Reports and CWS Referrals

---

Table 3: Source of CPS Reports and CWS Referrals

---

Table 4: Monthly Count of CPS Reports and CWS Referrals Assigned to Counties

---

Table 5: Monthly Count of CPS Reports and CWS Referrals Assigned to CP&P Local Offices

---

**Table 1: NJ State Central Registry Activity: Monthly Child Abuse and Neglect Hotline Calls, Intakes and Assignments to CP&P Offices<sup>1,2,7</sup>**

2019-2020	Hotline Call Activity				Intakes Recorded in NJ SPIRIT <sup>6,8</sup>												Assignments to CP&P Offices				
	Total Calls to SCR <sup>3</sup>	Abandon Calls <sup>4</sup>	Average Time to Answer (seconds)	Resulting NJS Intakes <sup>5</sup>	CPS Reports		CWS Referrals		No Action Required (NAR)		Related Information (RI)		Information & Referral (I&R)		Information Only (IO)		CPS Reports		CWS Referrals		Total
					n	%	n	%	n	%	n	%	n	%	n	%	n	%	n	%	
January 2019	14,566	1,097	91	15,153	5,443	35.9%	1,858	12.3%	224	1.5%	3,764	24.8%	1,673	11.0%	2,191	14.5%	5,443	74.6%	1,858	25.4%	7,301
February 2019	12,995	1,095	102	13,518	4,811	35.6%	1,626	12.0%	213	1.6%	3,476	25.7%	1,506	11.1%	1,886	14.0%	4,811	74.7%	1,628	25.3%	6,439
March 2019	14,637	1,422	112	15,528	5,677	36.6%	1,826	11.8%	212	1.4%	3,825	24.6%	1,762	11.3%	2,226	14.3%	5,677	75.7%	1,824	24.3%	7,501
April 2019	14,252	1,404	113	14,540	5,313	36.5%	1,630	11.2%	253	1.7%	3,500	24.1%	1,721	11.8%	2,123	14.6%	5,313	76.5%	1,630	23.5%	6,943
May 2019	15,705	1,615	120	15,810	5,853	37.0%	1,780	11.3%	229	1.4%	3,784	23.9%	1,852	11.7%	2,312	14.6%	5,853	76.7%	1,781	23.3%	7,634
June 2019	13,596	1,287	107	14,057	4,872	33.0%	1,507	10.7%	268	1.9%	3,537	25.2%	1,703	12.1%	2,168	15.4%	4,874	76.4%	1,509	23.6%	6,383
July 2019	12,135	874	73	12,821	4,277	33.4%	1,309	10.2%	267	2.1%	3,250	25.3%	1,452	11.3%	2,266	17.7%	4,277	76.6%	1,309	23.4%	5,586
August 2019	11,044	482	38	12,291	4,068	33.1%	1,303	10.6%	222	1.8%	3,113	25.3%	1,381	11.2%	2,204	17.9%	4,068	75.7%	1,306	24.3%	5,374
September 2019	13,737	991	72	14,995	5,315	35.4%	1,551	10.3%	266	1.8%	3,695	24.6%	1,790	11.9%	2,378	15.9%	5,315	77.4%	1,551	22.6%	6,866
October 2019	15,981	1,270	95	16,503	5,968	36.2%	1,923	11.7%	260	1.6%	4,039	24.5%	1,959	11.9%	2,354	14.3%	5,968	75.6%	1,926	24.4%	7,894
November 2019	12,937	1,128	92	14,799	4,991	33.7%	1,434	9.7%	205	1.4%	3,681	24.9%	1,741	11.8%	2,747	18.6%	4,991	77.7%	1,432	22.3%	6,423
December 2019	12,832	1,147	102	13,166	4,855	36.9%	1,432	10.9%	203	1.5%	3,204	24.3%	1,478	11.2%	1,994	15.1%	4,855	77.2%	1,434	22.8%	6,289
<b>January 2020</b>	<b>15,893</b>	<b>2,070</b>	<b>141</b>	<b>15,573</b>	<b>5,715</b>	<b>36.7%</b>	<b>1,841</b>	<b>11.8%</b>	<b>227</b>	<b>1.5%</b>	<b>3,717</b>	<b>23.9%</b>	<b>1,976</b>	<b>12.7%</b>	<b>2,097</b>	<b>13.5%</b>	<b>5,715</b>	<b>75.6%</b>	<b>1,842</b>	<b>24.4%</b>	<b>7,557</b>
	<b>13,870</b>	<b>1,222</b>	<b>97</b>	<b>14,520</b>	<b>5,166</b>	<b>35.6%</b>	<b>1,617</b>	<b>11.1%</b>	<b>235</b>	<b>1.6%</b>	<b>3,583</b>	<b>24.7%</b>	<b>1,692</b>	<b>11.7%</b>	<b>2,227</b>	<b>15.3%</b>	<b>5,166</b>	<b>76.2%</b>	<b>1,618</b>	<b>23.8%</b>	<b>6,784</b>
<b>Overall Total</b>	<b>180,310</b>	<b>15,882</b>		<b>188,754</b>	<b>67,158</b>		<b>21,020</b>		<b>3,049</b>		<b>46,585</b>		<b>21,994</b>		<b>28,946</b>		<b>67,160</b>	<b>76.2%</b>	<b>21,030</b>	<b>23.8%</b>	<b>88,190</b>

<sup>1</sup>Comes from three distinct sources: (1) the Automatic Call Distribution (ACD) phone system; which keeps a count of the number of calls and call routing; (2) Monthly NJSpirit Intakes; which record decision making on calls received by hotline screeners, and (3) NJSpirit extracts of assigned CWS Referrals and CPS Reports.

<sup>2</sup>The number of Intakes, CPS Reports, and CWS Referrals are based on an extract from NJSpirit. Data extracted by the Office of Research, Evaluation, and Reporting on **February 10, 2020** includes all Intakes, CPS Reports, and CWS Referrals received from **January 1, 2020 through January 31, 2020**.

<sup>3</sup>The number calls received through the ACD System that were directed to a screener from any call-in phone number.

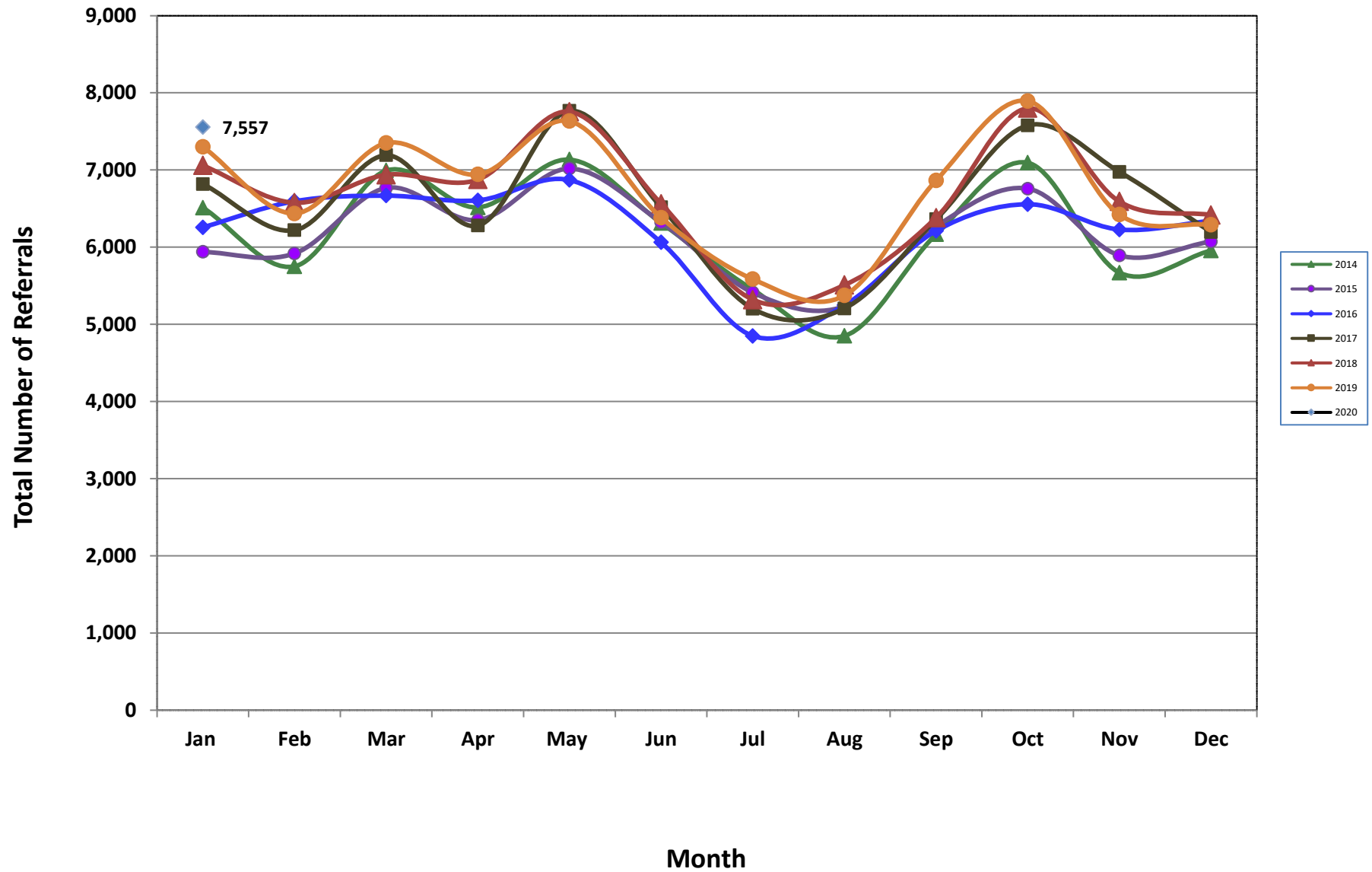
<sup>4</sup>The number of calls received through the ACD System that are abandoned either while waiting in queue or while ringing.

<sup>5</sup>The number of Intakes entered in NJSpirit from the number of calls received.

<sup>6</sup>The number of Intakes recorded in NJSpirit, by type of Intake. There is not a one-to-one relationship between an ACD call and an Intake; multiple calls to State Central Registry (SCR) may result in a single Intake, or one call may result in multiple Intakes.

<sup>7</sup>Intake: The process of documenting: a report of alleged abuse or neglect of a child (CPS); a request for services on behalf of a child, or a referral of a child for services (CWS); a call in which the caller provides additional or clarifying information about a current service case or active investigation (RI); informing a caller of, or referring a caller to, services available from other private or public sources (I&R); a call that requires no action by CP&P (NAR); or a response to a simple inquiry (IO).

### CP&P Annual Trends in CPS Reports and CWS Referrals



**Table 2: Assignments to CP&P Offices: CPS Reports and CWS Referrals<sup>1</sup>**

Intake Date <sup>3</sup>		CPS Reports <sup>2</sup>	CWS Referrals <sup>2</sup>	Total Assignments <sup>2</sup>
2015	Jan 2015	4,549	1,391	5,940
	Feb 2015	4,574	1,345	5,919
	Mar 2015	5,187	1,580	6,767
	Apr 2015	4,967	1,384	6,351
	May 2015	5,457	1,561	7,018
	Jun 2015	4,887	1,436	6,323
	Jul 2015	4,140	1,273	5,413
	Aug 2015	3,978	1,256	5,234
	Sep 2015	4,776	1,495	6,271
	Oct 2015	5,139	1,619	6,758
	Nov 2015	4,417	1,477	5,894
	Dec 2015	4,530	1,544	6,074
	<b>Total</b>	<b>56,601</b>	<b>17,361</b>	<b>73,962</b>
2016	Jan 2016	4,686	1,571	6,257
	Feb 2016	4,974	1,622	6,596
	Mar 2016	5,000	1,669	6,669
	Apr 2016	5,065	1,542	6,607
	May 2016	5,238	1,633	6,871
	Jun 2016	4,602	1,461	6,063
	Jul 2016	3,663	1,187	4,850
	Aug 2016	3,941	1,307	5,248
	Sep 2016	4,654	1,559	6,213
	Oct 2016	4,935	1,622	6,557
	Nov 2016	4,677	1,552	6,229
	Dec 2016	4,762	1,580	6,342
	<b>Total</b>	<b>56,197</b>	<b>18,305</b>	<b>74,502</b>
2017	Jan 2017	5,111	1,708	6,819
	Feb 2017	4,716	1,504	6,220
	Mar 2017	5,349	1,843	7,192
	Apr 2017	4,790	1,490	6,280
	May 2017	5,847	1,919	7,766
	Jun 2017	4,853	1,665	6,518
	Jul 2017	3,814	1,389	5,203
	Aug 2017	3,866	1,340	5,206
	Sep 2017	4,719	1,643	6,362
	Oct 2017	5,613	1,966	7,579
	Nov 2017	5,223	1,753	6,976
	Dec 2017	4,601	1,594	6,195
	<b>Total</b>	<b>58,502</b>	<b>19,814</b>	<b>78,316</b>

**Table 2: Assignments to CP&P Offices: CPS Reports and CWS Referrals<sup>1</sup>**

Intake Date <sup>3</sup>		CPS Reports <sup>2</sup>	CWS Referrals <sup>2</sup>	Total Assignments <sup>2</sup>
2018	Jan 2018	5,276	1,784	7,060
	Feb 2018	4,933	1,644	6,577
	Mar 2018	5,212	1,727	6,939
	Apr 2018	5,275	1,601	6,876
	May 2018	5,920	1,836	7,756
	Jun 2018	4,948	1,615	6,563
	Jul 2018	4,011	1,308	5,319
	Aug 2018	4,102	1,408	5,510
	Sep 2018	4,748	1,634	6,382
	Oct 2018	5,790	2,011	7,801
	Nov 2018	4,973	1,620	6,593
	Dec 2018	4,891	1,527	6,418
	<b>Total</b>	<b>60,079</b>	<b>19,715</b>	<b>79,794</b>
2019	Jan 2019	5,443	1,858	7,301
	Feb 2019	4,811	1,628	6,439
	Mar 2019	5,677	1,824	7,501
	Apr 2019	5,313	1,630	6,943
	May 2019	5,853	1,781	7,634
	June 2019	4,874	1,509	6,383
	July 2019	4,277	1,309	5,586
	Aug 2019	4,068	1,306	5,374
	Sep 2019	5,315	1,551	6,866
	Oct 2019	5,968	1,926	7,894
	Nov 2019	4,991	1,432	6,423
	Dec 2019	4,855	1,434	6,289
	<b>Total</b>	<b>61,445</b>	<b>19,188</b>	<b>80,633</b>
2020	Jan 2020	5,715	1,842	7,557
	<b>Total</b>	<b>5,715</b>	<b>1,842</b>	<b>7,557</b>
<b>Grand Total</b>		<b>298,539</b>	<b>96,225</b>	<b>394,764</b>

<sup>1</sup>Source of Data: NJ SPIRIT

<sup>2</sup>A CPS Report or a CWS Referral may include multiple children in a family, with one or more allegation or request for services.

In these cases, each CPS Report or CWS Referral is counted once - the CPS Report or the CWS Referral is the unit of analysis

<sup>3</sup>Prior to January 2014, the number of CPS Reports and CWS Referrals was based on the type of assignment of the CPS Report or CWS Referral. Beginning in January 2014, the number of CPS Reports and CWS Referrals is based on the number of CPS Reports and CWS

**Table 3: Source of CPS Reports and CWS Referrals**

CPS Reports and CWS Referrals	Source	Jan 2019	Feb 2019	Mar 2019	Apr 2019	May 2019	June 2019	July 2019	Aug 2019	Sep 2019	Oct 2019	Nov 2019	Dec 2019	Jan 2020	13 Month Total		
	School Staff	2,151	1,887	2,388	1,732	2,167	1,163	211	90	1,479	2,314	1,703	1,562	<b>2,327</b>	<b>31%</b>	21,174	24%
	Healthcare Provider	999	858	977	955	1,033	970	964	917	963	1,059	886	923	<b>990</b>	<b>13%</b>	12,494	14%
	Law Enforcement	1,131	1,156	1,290	1,329	1,409	1,437	1,416	1,320	1,432	1,425	1,260	1,247	<b>1,295</b>	<b>17%</b>	17,147	19%
	Government Agency	417	345	374	392	477	387	448	391	417	457	343	367	<b>452</b>	<b>6%</b>	5,267	6%
	Parent	512	419	513	509	525	492	549	583	534	529	425	448	<b>509</b>	<b>7%</b>	6,547	7%
	Relative/Friend/Neighbor	447	359	399	456	400	418	482	479	505	427	384	388	<b>411</b>	<b>5%</b>	5,555	6%
	Anonymous	656	586	686	641	715	629	493	544	615	674	556	508	<b>600</b>	<b>8%</b>	7,903	9%
	CP&P	125	118	130	107	102	104	126	129	102	110	82	89	<b>106</b>	<b>1%</b>	1,430	2%
	Court/Legal	190	155	162	182	176	158	189	223	180	207	160	158	<b>210</b>	<b>3%</b>	2,350	3%
	Community Group/Individual	274	234	253	257	257	242	279	268	257	310	287	227	<b>317</b>	<b>4%</b>	3,462	4%
	Facility Staff (incl Correctional Facility)	88	57	85	88	81	76	88	92	74	79	67	83	<b>79</b>	<b>1%</b>	1,037	1%
	Child (Self)	23	29	25	32	37	37	50	47	45	34	27	37	<b>28</b>	<b>0%</b>	451	1%
	Other	270	219	204	245	244	248	277	272	249	250	235	242	<b>213</b>	<b>3%</b>	3,168	4%
Daycare/Babysitter	18	17	15	18	11	22	14	19	14	19	8	10	<b>20</b>	<b>0%</b>	205	0%	
<b>Total</b>	<b>7,301</b>	<b>6,439</b>	<b>7,501</b>	<b>7,501</b>	<b>7,634</b>	<b>6,383</b>	<b>6,383</b>	<b>6,383</b>	<b>6,866</b>	<b>7,894</b>	<b>6,423</b>	<b>6,289</b>	<b>7,557</b>		<b>88,190</b>		

**Table 4: Monthly Count of CPS Reports and CWS Referrals Assigned to Counties**

County	Jan 2019	Feb 2019	Mar 2019	Apr 2019	May 2019	June 2019	July 2019	Aug 2019	Sep 2019	Oct 2019	Nov 2019	Dec 2019	Jan 2020	Average Number of Assignments Last 13 Months	Nov 19 to Jan 20 Numerical Difference
	Jan 2019	Feb 2019	Mar 2019	Apr 2019	May 2019	June 2019	July 2019	Aug 2019	Sep 2019	Oct 2019	Nov 2019	Dec 2019	Jan 2020		
Atlantic	285	274	296	273	318	279	235	235	282	302	258	261	292	276	117%
Bergen	460	369	460	439	486	376	273	285	402	471	423	375	457	406	34
Burlington	338	361	337	330	351	288	262	264	352	385	305	285	383	326	78
Camden	577	485	619	559	588	484	442	422	572	625	523	508	603	539	80
Cape May	103	83	74	88	70	82	96	80	112	105	78	78	85	87	7
Cumberland	218	191	235	202	219	214	187	158	206	256	216	221	238	212	22
Essex	798	723	795	740	851	693	604	622	713	848	703	651	790	733	87
Gloucester	302	250	272	296	341	265	250	232	259	279	271	266	285	274	14
Hudson	475	410	518	457	510	422	346	307	400	535	437	415	558	445	121
Hunterdon	48	52	71	50	67	64	42	48	74	60	63	66	67	59	4
Mercer	298	301	331	295	292	298	264	265	276	337	290	267	344	297	54
Middlesex	527	476	505	449	505	412	337	357	489	558	426	488	580	470	154
Monmouth	433	333	424	359	424	376	295	287	378	437	350	349	411	374	61
Morris	264	215	244	241	303	200	181	187	266	255	226	212	264	235	38
Ocean	428	382	440	460	459	386	385	337	428	525	387	406	482	423	95
Passaic	482	394	527	485	535	431	356	327	443	519	390	409	456	443	66
Salem	97	71	75	91	77	57	83	85	92	98	78	69	79	81	1
Somerset	160	158	196	158	167	155	155	114	180	202	155	146	197	165	42
Sussex	100	122	116	94	114	104	83	107	125	129	91	104	114	108	23
Union	401	359	405	353	398	317	276	252	321	400	345	327	383	349	38
Warren	89	73	118	131	104	102	82	88	97	96	93	82	98	96	5
<b>County Subtotals</b>	<b>6,883</b>	<b>6,082</b>	<b>7,058</b>	<b>6,550</b>	<b>7,179</b>	<b>6,005</b>	<b>5,234</b>	<b>5,059</b>	<b>6,467</b>	<b>7,422</b>	<b>6,108</b>	<b>5,985</b>	<b>7,166</b>	<b>6,400</b>	<b>1,058</b>
Central Region IAIU	61	47	61	66	82	57	58	41	60	70	49	48	67	59	18
Metro Region IAIU	55	47	62	45	64	41	36	42	43	80	45	41	46	50	1
Northern Region IAIU	58	74	83	57	89	64	53	37	68	77	45	45	59	62	14
Southern Region IAIU	92	70	85	90	90	69	66	57	83	75	59	62	82	75	23
<b>IAIU Subtotals</b>	<b>266</b>	<b>238</b>	<b>291</b>	<b>258</b>	<b>325</b>	<b>231</b>	<b>213</b>	<b>177</b>	<b>254</b>	<b>302</b>	<b>198</b>	<b>196</b>	<b>254</b>	<b>246</b>	<b>56</b>
<b>Unable to Determine<sup>1</sup></b>	<b>149</b>	<b>119</b>	<b>151</b>	<b>132</b>	<b>127</b>	<b>147</b>	<b>138</b>	<b>138</b>	<b>145</b>	<b>170</b>	<b>117</b>	<b>108</b>	<b>135</b>	<b>137</b>	<b>18</b>
<b>Other Offices</b>	<b>3</b>	<b>0</b>	<b>1</b>	<b>3</b>	<b>3</b>	<b>0</b>	<b>1</b>	<b>0</b>	<b>0</b>	<b>0</b>	<b>0</b>	<b>0</b>	<b>2</b>	<b>1</b>	<b>2</b>
<b>Grand Total</b>	<b>7,301</b>	<b>6,439</b>	<b>7,501</b>	<b>6,943</b>	<b>7,634</b>	<b>6,383</b>	<b>5,586</b>	<b>5,374</b>	<b>6,866</b>	<b>7,894</b>	<b>6,423</b>	<b>6,289</b>	<b>7,557</b>	<b>6,784</b>	<b>1134</b>

<sup>1</sup>CPS Reports or CWS Referrals not assigned to an office through the Assignment Designee, but were assigned to an office for an assessment or investigation.



**Table 5: Monthly Count of CPS Reports and CWS Referrals Assigned to CP&P Local Offices**

County	Local Office	Type of Referral														Total
			Jan 2019	Feb 2019	Mar 2019	Apr 2019	May 2019	June 2019	July 2019	Aug 2019	Sep 2019	Oct 2019	Nov 2019	Dec 2019	Jan 2020	
ATLANTIC	Atlantic East	CPS	140	128	148	123	150	126	110	102	127	134	117	133	120	1,658
		CWS	32	33	42	36	41	34	34	30	46	38	26	31	33	456
		<b>Total</b>	<b>172</b>	<b>161</b>	<b>190</b>	<b>159</b>	<b>191</b>	<b>160</b>	<b>144</b>	<b>132</b>	<b>173</b>	<b>172</b>	<b>143</b>	<b>164</b>	<b>153</b>	<b>2,114</b>
	Atlantic West	CPS	86	84	81	88	111	86	69	77	76	86	99	79	101	1,123
		CWS	27	29	25	26	16	33	22	26	33	44	16	18	38	353
		<b>Total</b>	<b>113</b>	<b>113</b>	<b>106</b>	<b>114</b>	<b>127</b>	<b>119</b>	<b>91</b>	<b>103</b>	<b>109</b>	<b>130</b>	<b>115</b>	<b>97</b>	<b>139</b>	<b>1,476</b>
	County Totals	CPS	226	212	229	211	261	212	179	179	203	220	216	212	221	2,781
		CWS	59	62	67	62	57	67	56	56	79	82	42	49	71	809
		<b>Total</b>	<b>285</b>	<b>274</b>	<b>296</b>	<b>273</b>	<b>318</b>	<b>279</b>	<b>235</b>	<b>235</b>	<b>282</b>	<b>302</b>	<b>258</b>	<b>261</b>	<b>292</b>	<b>3,590</b>
BERGEN	Bergen Central	CPS	137	98	129	134	160	122	91	98	131	150	137	102	145	1,634
		CWS	67	56	45	55	64	36	23	31	46	57	47	51	57	635
		<b>Total</b>	<b>204</b>	<b>154</b>	<b>174</b>	<b>189</b>	<b>224</b>	<b>158</b>	<b>114</b>	<b>129</b>	<b>177</b>	<b>207</b>	<b>184</b>	<b>153</b>	<b>202</b>	<b>2,269</b>
	Bergen South	CPS	173	139	207	173	184	155	121	117	166	192	174	171	182	2,154
		CWS	83	76	79	77	78	63	38	39	59	72	65	51	73	853
		<b>Total</b>	<b>256</b>	<b>215</b>	<b>286</b>	<b>250</b>	<b>262</b>	<b>218</b>	<b>159</b>	<b>156</b>	<b>225</b>	<b>264</b>	<b>239</b>	<b>222</b>	<b>255</b>	<b>3,007</b>
	County Totals	CPS	310	237	336	307	344	277	212	215	297	342	311	273	327	3,788
		CWS	150	132	124	132	142	99	61	70	105	129	112	102	130	1,488
		<b>Total</b>	<b>460</b>	<b>369</b>	<b>460</b>	<b>439</b>	<b>486</b>	<b>376</b>	<b>273</b>	<b>285</b>	<b>402</b>	<b>471</b>	<b>423</b>	<b>375</b>	<b>457</b>	<b>5,276</b>
BURLINGTON	Burlington East	CPS	132	150	128	142	119	117	127	108	126	145	114	109	147	1,664
		CWS	41	41	43	46	45	34	21	38	55	39	44	48	50	545
		<b>Total</b>	<b>173</b>	<b>191</b>	<b>171</b>	<b>188</b>	<b>164</b>	<b>151</b>	<b>148</b>	<b>146</b>	<b>181</b>	<b>184</b>	<b>158</b>	<b>157</b>	<b>197</b>	<b>2,209</b>
	Burlington West	CPS	123	133	122	109	137	96	85	92	133	153	113	96	143	1,535
		CWS	42	37	44	33	50	41	29	26	38	48	34	32	43	497
		<b>Total</b>	<b>165</b>	<b>170</b>	<b>166</b>	<b>142</b>	<b>187</b>	<b>137</b>	<b>114</b>	<b>118</b>	<b>171</b>	<b>201</b>	<b>147</b>	<b>128</b>	<b>186</b>	<b>2,032</b>
	County Totals	CPS	255	283	250	251	256	213	212	200	259	298	227	205	290	3,199
		CWS	83	78	87	79	95	75	50	64	93	87	78	80	93	1,042
		<b>Total</b>	<b>338</b>	<b>361</b>	<b>337</b>	<b>330</b>	<b>351</b>	<b>288</b>	<b>262</b>	<b>264</b>	<b>352</b>	<b>385</b>	<b>305</b>	<b>285</b>	<b>383</b>	<b>4,241</b>
CAMDEN	Camden Central	CPS	137	98	146	118	104	112	87	106	127	122	100	118	112	1,487
		CWS	31	34	34	33	33	27	16	22	27	40	28	24	43	392
		<b>Total</b>	<b>168</b>	<b>132</b>	<b>180</b>	<b>151</b>	<b>137</b>	<b>139</b>	<b>103</b>	<b>128</b>	<b>154</b>	<b>162</b>	<b>128</b>	<b>142</b>	<b>155</b>	<b>1,879</b>
	Camden East	CPS	95	83	123	107	122	91	83	70	103	111	114	100	94	1,296
		CWS	35	21	38	31	34	27	36	15	34	30	31	30	44	406
		<b>Total</b>	<b>130</b>	<b>104</b>	<b>161</b>	<b>138</b>	<b>156</b>	<b>118</b>	<b>119</b>	<b>85</b>	<b>137</b>	<b>141</b>	<b>145</b>	<b>130</b>	<b>138</b>	<b>1,702</b>
	Camden North	CPS	110	111	110	121	117	93	77	84	111	135	101	84	119	1,373
		CWS	36	42	43	30	34	26	32	25	47	40	37	26	31	449
		<b>Total</b>	<b>146</b>	<b>153</b>	<b>153</b>	<b>151</b>	<b>151</b>	<b>119</b>	<b>109</b>	<b>109</b>	<b>158</b>	<b>175</b>	<b>138</b>	<b>110</b>	<b>150</b>	<b>1,822</b>
	Camden South	CPS	103	73	97	95	118	77	83	68	91	113	88	96	125	1,227
		CWS	30	23	28	24	26	31	28	32	32	34	24	30	35	377
		<b>Total</b>	<b>133</b>	<b>96</b>	<b>125</b>	<b>119</b>	<b>144</b>	<b>108</b>	<b>111</b>	<b>100</b>	<b>123</b>	<b>147</b>	<b>112</b>	<b>126</b>	<b>160</b>	<b>1,604</b>
	County Totals	CPS	445	365	476	441	461	373	330	328	432	481	403	398	450	5,383
		CWS	132	120	143	118	127	111	112	94	140	144	120	110	153	1,624
		<b>Total</b>	<b>577</b>	<b>485</b>	<b>619</b>	<b>559</b>	<b>588</b>	<b>484</b>	<b>442</b>	<b>422</b>	<b>572</b>	<b>625</b>	<b>523</b>	<b>508</b>	<b>603</b>	<b>7,007</b>
CAPE MAY	Cape May	CPS	79	63	58	75	57	63	72	67	87	75	63	62	68	889
		CWS	24	20	16	13	13	19	24	13	25	30	15	16	17	245
		<b>Total</b>	<b>103</b>	<b>83</b>	<b>74</b>	<b>88</b>	<b>70</b>	<b>82</b>	<b>96</b>	<b>80</b>	<b>112</b>	<b>105</b>	<b>78</b>	<b>78</b>	<b>85</b>	<b>1,134</b>
	County Totals	CPS	79	63	58	75	57	63	72	67	87	75	63	62	68	889
		<b>Total</b>	<b>103</b>	<b>83</b>	<b>74</b>	<b>88</b>	<b>70</b>	<b>82</b>	<b>96</b>	<b>80</b>	<b>112</b>	<b>105</b>	<b>78</b>	<b>78</b>	<b>85</b>	<b>1,134</b>
CUMBERLAND	Cumberland East	CPS	43	54	68	58	49	50	45	50	51	59	47	61	57	692
		CWS	17	9	13	12	25	24	12	13	9	16	19	9	11	189
		<b>Total</b>	<b>60</b>	<b>63</b>	<b>81</b>	<b>70</b>	<b>74</b>	<b>74</b>	<b>57</b>	<b>63</b>	<b>60</b>	<b>75</b>	<b>66</b>	<b>70</b>	<b>68</b>	<b>881</b>
	Cumberland West	CPS	119	100	124	103	116	118	101	75	118	139	119	126	141	1,499
		CWS	39	28	30	29	29	22	29	20	28	42	31	25	29	381
		<b>Total</b>	<b>158</b>	<b>128</b>	<b>154</b>	<b>132</b>	<b>145</b>	<b>140</b>	<b>130</b>	<b>95</b>	<b>146</b>	<b>181</b>	<b>150</b>	<b>151</b>	<b>170</b>	<b>1,880</b>
	County Totals	CPS	162	154	192	161	165	168	146	125	169	198	166	187	198	2,191
CWS		56	37	43	41	54	46	41	33	37	58	50	34	40	570	
<b>Total</b>		<b>218</b>	<b>191</b>	<b>235</b>	<b>202</b>	<b>219</b>	<b>214</b>	<b>187</b>	<b>158</b>	<b>206</b>	<b>256</b>	<b>216</b>	<b>221</b>	<b>238</b>	<b>2,761</b>	

**Table 5: Monthly Count of CPS Reports and CWS Referrals Assigned to CP&P Local Offices**

County	Local Office	Type of Referral														Total
			Jan 2019	Feb 2019	Mar 2019	Apr 2019	May 2019	June 2019	July 2019	Aug 2019	Sep 2019	Oct 2019	Nov 2019	Dec 2019	Jan 2020	
ESSEX	Essex Central	CPS	107	97	107	89	102	93	94	88	111	121	96	98	106	1,309
		CWS	37	33	42	26	34	36	36	25	32	48	32	28	35	444
		<b>Total</b>	<b>144</b>	<b>130</b>	<b>149</b>	<b>115</b>	<b>136</b>	<b>129</b>	<b>130</b>	<b>113</b>	<b>143</b>	<b>169</b>	<b>128</b>	<b>126</b>	<b>141</b>	<b>1,753</b>
	Essex North	CPS	72	76	73	76	85	62	53	58	65	79	75	63	78	915
		CWS	32	25	24	21	29	32	17	31	27	24	23	22	30	337
		<b>Total</b>	<b>104</b>	<b>101</b>	<b>97</b>	<b>97</b>	<b>114</b>	<b>94</b>	<b>70</b>	<b>89</b>	<b>92</b>	<b>103</b>	<b>98</b>	<b>85</b>	<b>108</b>	<b>1,252</b>
	Essex South	CPS	86	76	94	90	94	71	48	46	66	66	83	71	87	978
		CWS	27	46	35	39	32	23	15	26	20	35	24	21	25	368
		<b>Total</b>	<b>113</b>	<b>122</b>	<b>129</b>	<b>129</b>	<b>126</b>	<b>94</b>	<b>63</b>	<b>72</b>	<b>86</b>	<b>101</b>	<b>107</b>	<b>92</b>	<b>112</b>	<b>1346</b>
	Newark Center City	CPS	103	96	89	96	128	85	86	95	101	118	83	93	121	1294
		CWS	38	32	33	31	34	31	27	23	36	35	30	35	29	414
		<b>Total</b>	<b>141</b>	<b>128</b>	<b>122</b>	<b>127</b>	<b>162</b>	<b>116</b>	<b>113</b>	<b>118</b>	<b>137</b>	<b>153</b>	<b>113</b>	<b>128</b>	<b>150</b>	<b>1708</b>
	Newark Northeast	CPS	111	83	112	104	118	89	84	77	94	116	98	74	97	1257
		CWS	28	26	35	38	29	25	29	22	28	35	27	19	35	376
<b>Total</b>		<b>139</b>	<b>109</b>	<b>147</b>	<b>142</b>	<b>147</b>	<b>114</b>	<b>113</b>	<b>99</b>	<b>122</b>	<b>151</b>	<b>125</b>	<b>93</b>	<b>132</b>	<b>1633</b>	
Newark South	CPS	118	103	116	98	121	118	85	90	104	134	107	95	120	1409	
	CWS	39	30	35	32	45	28	30	41	29	37	25	32	27	430	
	<b>Total</b>	<b>157</b>	<b>133</b>	<b>151</b>	<b>130</b>	<b>166</b>	<b>146</b>	<b>115</b>	<b>131</b>	<b>133</b>	<b>171</b>	<b>132</b>	<b>127</b>	<b>147</b>	<b>1839</b>	
County Totals	CPS	597	531	591	553	648	518	450	454	541	634	542	494	609	7162	
	CWS	201	192	204	187	203	175	154	168	172	214	161	157	181	2369	
	<b>Total</b>	<b>798</b>	<b>723</b>	<b>795</b>	<b>740</b>	<b>851</b>	<b>693</b>	<b>604</b>	<b>622</b>	<b>713</b>	<b>848</b>	<b>703</b>	<b>651</b>	<b>790</b>	<b>9531</b>	
GLOUCESTER	Gloucester East	CPS	108	88	104	101	134	114	80	92	98	109	94	102	111	1335
		CWS	29	28	29	42	33	23	26	21	19	25	28	24	26	353
		<b>Total</b>	<b>137</b>	<b>116</b>	<b>133</b>	<b>143</b>	<b>167</b>	<b>137</b>	<b>106</b>	<b>113</b>	<b>117</b>	<b>134</b>	<b>122</b>	<b>126</b>	<b>137</b>	<b>1688</b>
	Gloucester West	CPS	130	101	112	129	139	105	115	85	120	114	122	107	116	1495
		CWS	35	33	27	24	35	23	29	34	22	31	27	33	32	385
		<b>Total</b>	<b>165</b>	<b>134</b>	<b>139</b>	<b>153</b>	<b>174</b>	<b>128</b>	<b>144</b>	<b>119</b>	<b>142</b>	<b>145</b>	<b>149</b>	<b>140</b>	<b>148</b>	<b>1880</b>
County Totals	CPS	238	189	216	230	273	219	195	177	218	223	216	209	227	2830	
	CWS	64	61	56	66	68	46	55	55	41	56	55	57	58	738	
	<b>Total</b>	<b>302</b>	<b>250</b>	<b>272</b>	<b>296</b>	<b>341</b>	<b>265</b>	<b>250</b>	<b>232</b>	<b>259</b>	<b>279</b>	<b>271</b>	<b>266</b>	<b>285</b>	<b>3568</b>	
HUDSON	Hudson Central	CPS	107	104	129	113	116	101	102	94	90	122	112	103	141	1434
		CWS	47	37	46	35	20	19	32	22	35	41	37	26	48	445
		<b>Total</b>	<b>154</b>	<b>141</b>	<b>175</b>	<b>148</b>	<b>136</b>	<b>120</b>	<b>134</b>	<b>116</b>	<b>125</b>	<b>163</b>	<b>149</b>	<b>129</b>	<b>189</b>	<b>1879</b>
	Hudson North	CPS	87	67	81	77	95	65	57	36	78	97	82	67	85	974
		CWS	40	28	28	30	33	26	21	22	20	29	26	23	33	359
		<b>Total</b>	<b>127</b>	<b>95</b>	<b>109</b>	<b>107</b>	<b>128</b>	<b>91</b>	<b>78</b>	<b>58</b>	<b>98</b>	<b>126</b>	<b>108</b>	<b>90</b>	<b>118</b>	<b>1333</b>
	Hudson South	CPS	55	47	66	52	63	51	37	45	46	65	50	49	77	703
		CWS	15	22	25	21	44	36	14	14	13	25	13	19	27	288
		<b>Total</b>	<b>70</b>	<b>69</b>	<b>91</b>	<b>73</b>	<b>107</b>	<b>87</b>	<b>51</b>	<b>59</b>	<b>59</b>	<b>90</b>	<b>63</b>	<b>68</b>	<b>104</b>	<b>991</b>
	Hudson West	CPS	87	69	93	97	105	102	58	53	86	110	87	101	108	1156
		CWS	37	36	50	32	34	22	25	21	32	46	30	27	39	431
		<b>Total</b>	<b>124</b>	<b>105</b>	<b>143</b>	<b>129</b>	<b>139</b>	<b>124</b>	<b>83</b>	<b>74</b>	<b>118</b>	<b>156</b>	<b>117</b>	<b>128</b>	<b>147</b>	<b>1587</b>
County Totals	CPS	336	287	369	339	379	319	254	228	300	394	331	320	411	4267	
	CWS	139	123	149	118	131	103	92	79	100	141	106	95	147	1523	
	<b>Total</b>	<b>475</b>	<b>410</b>	<b>518</b>	<b>457</b>	<b>510</b>	<b>422</b>	<b>346</b>	<b>307</b>	<b>400</b>	<b>535</b>	<b>437</b>	<b>415</b>	<b>558</b>	<b>5790</b>	
HUNTERDON	Hunterdon	CPS	33	33	52	42	53	47	31	33	56	46	45	51	48	570
		CWS	15	19	19	8	14	17	11	15	18	14	18	15	19	202
		<b>Total</b>	<b>48</b>	<b>52</b>	<b>71</b>	<b>50</b>	<b>67</b>	<b>64</b>	<b>42</b>	<b>48</b>	<b>74</b>	<b>60</b>	<b>63</b>	<b>66</b>	<b>67</b>	<b>772</b>
	County Totals	CPS	33	33	52	42	53	47	31	33	56	46	45	51	48	570
	CWS	15	19	19	8	14	17	11	15	18	14	18	15	19	202	
	<b>Total</b>	<b>48</b>	<b>52</b>	<b>71</b>	<b>50</b>	<b>67</b>	<b>64</b>	<b>42</b>	<b>48</b>	<b>74</b>	<b>60</b>	<b>63</b>	<b>66</b>	<b>67</b>	<b>772</b>	
MERCER	Mercer North	CPS	117	114	125	110	114	95	81	90	113	100	111	106	120	1396
		CWS	39	43	41	44	45	46	45	24	30	52	27	36	30	502
		<b>Total</b>	<b>156</b>	<b>157</b>	<b>166</b>	<b>154</b>	<b>159</b>	<b>141</b>	<b>126</b>	<b>114</b>	<b>143</b>	<b>152</b>	<b>138</b>	<b>142</b>	<b>150</b>	<b>1898</b>
	Mercer South	CPS	101	104	125	107	97	122	112	116	107	140	108	102	144	1485
		CWS	41	40	40	34	36	35	26	35	26	45	44	23	50	475
		<b>Total</b>	<b>142</b>	<b>144</b>	<b>165</b>	<b>141</b>	<b>133</b>	<b>157</b>	<b>138</b>	<b>151</b>	<b>133</b>	<b>185</b>	<b>152</b>	<b>125</b>	<b>194</b>	<b>1960</b>
County Totals	CPS	218	218	250	217	211	217	193	206	220	240	219	208	264	2881	
	CWS	80	83	81	78	81	81	71	59	56	97	71	59	80	977	
	<b>Total</b>	<b>298</b>	<b>301</b>	<b>331</b>	<b>295</b>	<b>292</b>	<b>298</b>	<b>264</b>	<b>265</b>	<b>276</b>	<b>337</b>	<b>290</b>	<b>267</b>	<b>344</b>	<b>3858</b>	

**Table 5: Monthly Count of CPS Reports and CWS Referrals Assigned to CP&P Local Offices**

County	Local Office	Type of Referral														Total	
			Jan 2019	Feb 2019	Mar 2019	Apr 2019	May 2019	June 2019	July 2019	Aug 2019	Sep 2019	Oct 2019	Nov 2019	Dec 2019	Jan 2020		
MIDDLESEX	Middlesex Central	CPS	125	113	126	91	110	85	83	77	103	129	103	103	139	1387	
		CWS	33	38	25	36	37	23	25	24	26	30	27	25	36	385	
		<b>Total</b>	<b>158</b>	<b>151</b>	<b>151</b>	<b>127</b>	<b>147</b>	<b>108</b>	<b>108</b>	<b>101</b>	<b>129</b>	<b>159</b>	<b>130</b>	<b>128</b>	<b>175</b>	<b>1772</b>	
	Middlesex Coastal	CPS	148	130	127	133	149	113	88	115	136	146	115	146	160	1706	
		CWS	49	43	46	34	39	37	26	32	37	49	43	35	41	511	
		<b>Total</b>	<b>197</b>	<b>173</b>	<b>173</b>	<b>167</b>	<b>188</b>	<b>150</b>	<b>114</b>	<b>147</b>	<b>173</b>	<b>195</b>	<b>158</b>	<b>181</b>	<b>201</b>	<b>2217</b>	
	Middlesex West	CPS	126	116	132	116	125	110	80	76	136	145	121	139	151	1573	
		CWS	46	36	49	39	45	44	35	33	51	59	17	40	53	547	
		<b>Total</b>	<b>172</b>	<b>152</b>	<b>181</b>	<b>155</b>	<b>170</b>	<b>154</b>	<b>115</b>	<b>109</b>	<b>187</b>	<b>204</b>	<b>138</b>	<b>179</b>	<b>204</b>	<b>2120</b>	
	County Totals	CPS	399	359	385	340	384	308	251	268	375	420	339	388	450	4666	
		CWS	128	117	120	109	121	104	86	89	114	138	87	100	130	1443	
		<b>Total</b>	<b>527</b>	<b>476</b>	<b>505</b>	<b>449</b>	<b>505</b>	<b>412</b>	<b>337</b>	<b>357</b>	<b>489</b>	<b>558</b>	<b>426</b>	<b>488</b>	<b>580</b>	<b>6109</b>	
MONMOUTH	Monmouth North	CPS	190	128	181	147	203	142	119	120	172	182	168	146	171	2069	
		CWS	64	49	57	49	63	55	42	39	37	56	50	51	63	675	
		<b>Total</b>	<b>254</b>	<b>177</b>	<b>238</b>	<b>196</b>	<b>266</b>	<b>197</b>	<b>161</b>	<b>159</b>	<b>209</b>	<b>238</b>	<b>218</b>	<b>197</b>	<b>234</b>	<b>2744</b>	
	Monmouth South	CPS	145	114	138	120	118	136	110	101	127	152	101	123	124	1609	
		CWS	34	42	48	43	40	43	24	27	42	47	31	29	53	503	
		<b>Total</b>	<b>179</b>	<b>156</b>	<b>186</b>	<b>163</b>	<b>158</b>	<b>179</b>	<b>134</b>	<b>128</b>	<b>169</b>	<b>199</b>	<b>132</b>	<b>152</b>	<b>177</b>	<b>2112</b>	
	County Totals	CPS	335	242	319	267	321	278	229	221	299	334	269	269	295	3678	
		CWS	98	91	105	92	103	98	66	66	79	103	81	80	116	1178	
		<b>Total</b>	<b>433</b>	<b>333</b>	<b>424</b>	<b>359</b>	<b>424</b>	<b>376</b>	<b>295</b>	<b>287</b>	<b>378</b>	<b>437</b>	<b>350</b>	<b>349</b>	<b>411</b>	<b>4856</b>	
	MORRIS	Morris East	CPS	84	75	74	94	107	69	63	65	84	85	91	71	94	1056
			CWS	49	22	21	21	36	16	21	16	33	36	33	25	36	365
			<b>Total</b>	<b>133</b>	<b>97</b>	<b>95</b>	<b>115</b>	<b>143</b>	<b>85</b>	<b>84</b>	<b>81</b>	<b>117</b>	<b>121</b>	<b>124</b>	<b>96</b>	<b>130</b>	<b>1421</b>
Morris West		CPS	89	82	106	84	125	87	80	72	116	99	78	89	101	1208	
		CWS	42	36	43	42	35	28	17	34	33	35	24	27	33	429	
		<b>Total</b>	<b>131</b>	<b>118</b>	<b>149</b>	<b>126</b>	<b>160</b>	<b>115</b>	<b>97</b>	<b>106</b>	<b>149</b>	<b>134</b>	<b>102</b>	<b>116</b>	<b>134</b>	<b>1637</b>	
County Totals		CPS	173	157	180	178	232	156	143	137	200	184	169	160	195	2264	
		CWS	91	58	64	63	71	44	38	50	66	71	57	52	69	794	
		<b>Total</b>	<b>264</b>	<b>215</b>	<b>244</b>	<b>241</b>	<b>303</b>	<b>200</b>	<b>181</b>	<b>187</b>	<b>266</b>	<b>255</b>	<b>226</b>	<b>212</b>	<b>264</b>	<b>3058</b>	
OCEAN		Ocean North	CPS	165	157	179	209	219	148	149	134	189	207	158	189	197	2300
			CWS	65	48	53	53	63	40	48	41	55	85	36	45	67	699
			<b>Total</b>	<b>230</b>	<b>205</b>	<b>232</b>	<b>262</b>	<b>282</b>	<b>188</b>	<b>197</b>	<b>175</b>	<b>244</b>	<b>292</b>	<b>194</b>	<b>234</b>	<b>264</b>	<b>2999</b>
	Ocean South	CPS	147	147	163	148	140	157	152	121	146	174	152	134	173	1954	
		CWS	51	30	45	50	37	41	36	41	38	59	41	38	45	552	
		<b>Total</b>	<b>198</b>	<b>177</b>	<b>208</b>	<b>198</b>	<b>177</b>	<b>198</b>	<b>188</b>	<b>162</b>	<b>184</b>	<b>233</b>	<b>193</b>	<b>172</b>	<b>218</b>	<b>2506</b>	
	County Totals	CPS	312	304	342	357	359	305	301	255	335	381	310	323	370	4254	
		CWS	116	78	98	103	100	81	84	82	93	144	77	83	112	1251	
		<b>Total</b>	<b>428</b>	<b>382</b>	<b>440</b>	<b>460</b>	<b>459</b>	<b>386</b>	<b>385</b>	<b>337</b>	<b>428</b>	<b>525</b>	<b>387</b>	<b>406</b>	<b>482</b>	<b>5505</b>	
	PASSAIC	Passaic Central	CPS	192	160	181	195	198	157	132	119	183	205	153	140	172	2187
			CWS	66	59	94	71	79	55	35	36	65	73	50	64	66	813
			<b>Total</b>	<b>258</b>	<b>219</b>	<b>275</b>	<b>266</b>	<b>277</b>	<b>212</b>	<b>167</b>	<b>155</b>	<b>248</b>	<b>278</b>	<b>203</b>	<b>204</b>	<b>238</b>	<b>3000</b>
Passaic North		CPS	148	124	181	172	188	160	139	121	154	182	141	151	149	2010	
		CWS	76	51	71	47	70	59	50	51	41	59	46	54	69	744	
		<b>Total</b>	<b>224</b>	<b>175</b>	<b>252</b>	<b>219</b>	<b>258</b>	<b>219</b>	<b>189</b>	<b>172</b>	<b>195</b>	<b>241</b>	<b>187</b>	<b>205</b>	<b>218</b>	<b>2754</b>	
County Totals		CPS	340	284	362	367	386	317	271	240	337	387	294	291	321	4197	
		CWS	142	110	165	118	149	114	85	87	106	132	96	118	135	1557	
		<b>Total</b>	<b>482</b>	<b>394</b>	<b>527</b>	<b>485</b>	<b>535</b>	<b>431</b>	<b>356</b>	<b>327</b>	<b>443</b>	<b>519</b>	<b>390</b>	<b>409</b>	<b>456</b>	<b>5754</b>	
SALEM		Salem	CPS	77	50	64	71	63	40	63	62	74	82	71	51	58	826
			CWS	20	21	11	20	14	17	20	23	18	16	7	18	21	226
			<b>Total</b>	<b>97</b>	<b>71</b>	<b>75</b>	<b>91</b>	<b>77</b>	<b>57</b>	<b>83</b>	<b>85</b>	<b>92</b>	<b>98</b>	<b>78</b>	<b>69</b>	<b>79</b>	<b>1052</b>
	County Totals	CPS	77	50	64	71	63	40	63	62	74	82	71	51	58	826	
		CWS	20	21	11	20	14	17	20	23	18	16	7	18	21	226	
		<b>Total</b>	<b>97</b>	<b>71</b>	<b>75</b>	<b>91</b>	<b>77</b>	<b>57</b>	<b>83</b>	<b>85</b>	<b>92</b>	<b>98</b>	<b>78</b>	<b>69</b>	<b>79</b>	<b>1052</b>	
SOMERSET	Somerset	CPS	122	122	161	116	128	121	117	84	140	158	124	115	150	1658	
		CWS	38	36	35	42	39	34	38	30	40	44	31	31	47	485	
		<b>Total</b>	<b>160</b>	<b>158</b>	<b>196</b>	<b>158</b>	<b>167</b>	<b>155</b>	<b>155</b>	<b>114</b>	<b>180</b>	<b>202</b>	<b>155</b>	<b>146</b>	<b>197</b>	<b>2143</b>	
	County Totals	CPS	122	122	161	116	128	121	117	84	140	158	124	115	150	1658	
		CWS	38	36	35	42	39	34	38	30	40	44	31	31	47	485	
		<b>Total</b>	<b>160</b>	<b>158</b>	<b>196</b>	<b>158</b>	<b>167</b>	<b>155</b>	<b>155</b>	<b>114</b>	<b>180</b>	<b>202</b>	<b>155</b>	<b>146</b>	<b>197</b>	<b>2143</b>	

**Table 5: Monthly Count of CPS Reports and CWS Referrals Assigned to CP&P Local Offices**

County	Local Office	Type of Referral														Total
			Jan 2019	Feb 2019	Mar 2019	Apr 2019	May 2019	June 2019	July 2019	Aug 2019	Sep 2019	Oct 2019	Nov 2019	Dec 2019	Jan 2020	
SUSSEX	Sussex	CPS	77	88	87	75	81	77	64	84	104	97	71	74	85	1064
		CWS	23	34	29	19	33	27	19	23	21	32	20	30	29	339
		<b>Total</b>	<b>100</b>	<b>122</b>	<b>116</b>	<b>94</b>	<b>114</b>	<b>104</b>	<b>83</b>	<b>107</b>	<b>125</b>	<b>129</b>	<b>91</b>	<b>104</b>	<b>114</b>	<b>1403</b>
	County Totals	CPS	77	88	87	75	81	77	64	84	104	97	71	74	85	1064
		CWS	23	34	29	19	33	27	19	23	21	32	20	30	29	339
UNION	Union Central	CPS	104	87	99	100	95	95	70	75	82	91	81	75	98	1152
		CWS	43	27	32	31	29	25	19	17	26	31	32	32	29	373
		<b>Total</b>	<b>147</b>	<b>114</b>	<b>131</b>	<b>131</b>	<b>124</b>	<b>120</b>	<b>89</b>	<b>92</b>	<b>108</b>	<b>122</b>	<b>113</b>	<b>107</b>	<b>127</b>	<b>1525</b>
	Union East	CPS	94	104	98	94	104	80	76	63	68	89	81	86	92	1129
		CWS	35	38	45	22	30	25	21	22	29	40	29	19	36	391
		<b>Total</b>	<b>129</b>	<b>142</b>	<b>143</b>	<b>116</b>	<b>134</b>	<b>105</b>	<b>97</b>	<b>85</b>	<b>97</b>	<b>129</b>	<b>110</b>	<b>105</b>	<b>128</b>	<b>1520</b>
	Union West	CPS	98	79	98	76	103	71	68	55	94	112	99	78	94	1125
		CWS	27	24	33	30	37	21	22	20	22	37	23	37	34	367
		<b>Total</b>	<b>125</b>	<b>103</b>	<b>131</b>	<b>106</b>	<b>140</b>	<b>92</b>	<b>90</b>	<b>75</b>	<b>116</b>	<b>149</b>	<b>122</b>	<b>115</b>	<b>128</b>	<b>1492</b>
	County Totals	CPS	296	270	295	270	302	246	214	193	244	292	261	239	284	3406
		CWS	105	89	110	83	96	71	62	59	77	108	84	88	99	1131
		<b>Total</b>	<b>401</b>	<b>359</b>	<b>405</b>	<b>353</b>	<b>398</b>	<b>317</b>	<b>276</b>	<b>252</b>	<b>321</b>	<b>400</b>	<b>345</b>	<b>327</b>	<b>383</b>	<b>4537</b>
	WARREN	Warren	CPS	61	54	88	97	81	76	62	69	79	72	78	69	67
CWS			28	19	30	34	23	26	20	19	18	24	15	13	31	300
<b>Total</b>			<b>89</b>	<b>73</b>	<b>118</b>	<b>131</b>	<b>104</b>	<b>102</b>	<b>82</b>	<b>88</b>	<b>97</b>	<b>96</b>	<b>93</b>	<b>82</b>	<b>98</b>	<b>1253</b>
County Totals		CPS	61	54	88	97	81	76	62	69	79	72	78	69	67	953
		CWS	28	19	30	34	23	26	20	19	18	24	15	13	31	300
IAIU	Central Region IAIU	CPS	61	47	61	66	82	57	58	41	60	70	49	48	67	767
		CWS	0	0	0	0	0	0	0	0	0	0	0	0	0	0
		<b>Total</b>	<b>61</b>	<b>47</b>	<b>61</b>	<b>66</b>	<b>82</b>	<b>57</b>	<b>58</b>	<b>41</b>	<b>60</b>	<b>70</b>	<b>49</b>	<b>48</b>	<b>67</b>	<b>767</b>
	Metro Region IAIU	CPS	55	47	62	45	64	41	36	42	43	80	45	41	46	647
		CWS	0	0	0	0	0	0	0	0	0	0	0	0	0	0
		<b>Total</b>	<b>55</b>	<b>47</b>	<b>62</b>	<b>45</b>	<b>64</b>	<b>41</b>	<b>36</b>	<b>42</b>	<b>43</b>	<b>80</b>	<b>45</b>	<b>41</b>	<b>46</b>	<b>647</b>
	Northern Region IAIU	CPS	58	74	83	57	89	64	53	37	68	77	45	45	59	809
		CWS	0	0	0	0	0	0	0	0	0	0	0	0	0	0
		<b>Total</b>	<b>58</b>	<b>74</b>	<b>83</b>	<b>57</b>	<b>89</b>	<b>64</b>	<b>53</b>	<b>37</b>	<b>68</b>	<b>77</b>	<b>45</b>	<b>45</b>	<b>59</b>	<b>809</b>
	Southern Region IAIU	CPS	92	70	85	90	90	69	66	57	83	75	59	62	82	980
		CWS	0	0	0	0	0	0	0	0	0	0	0	0	0	0
		<b>Total</b>	<b>92</b>	<b>70</b>	<b>85</b>	<b>90</b>	<b>90</b>	<b>69</b>	<b>66</b>	<b>57</b>	<b>83</b>	<b>75</b>	<b>59</b>	<b>62</b>	<b>82</b>	<b>980</b>
	IAIU CPS Subtotal		CPS	266	238	291	258	325	231	213	177	254	302	198	196	254
IAIU CWS Subtotal		CWS	0	0	0	0	0	0	0	0	0	0	0	0	0	0
IAIU Subtotal		<b>Total</b>	<b>266</b>	<b>238</b>	<b>291</b>	<b>258</b>	<b>325</b>	<b>231</b>	<b>213</b>	<b>177</b>	<b>254</b>	<b>302</b>	<b>198</b>	<b>196</b>	<b>254</b>	<b>3,203</b>
County and IAIU CPS Subtotal		CPS	5,357	4,740	5,593	5,223	5,770	4,781	4,202	4,002	5,223	5,860	4,923	4,794	5,642	66,110
County and IAIU CWS Subtotal		CWS	1,792	1,580	1,756	1,585	1,734	1,455	1,245	1,234	1,498	1,864	1,383	1,387	1,778	20,291
Unable to Determine <sup>(1)</sup>		<b>Total</b>	<b>149</b>	<b>119</b>	<b>151</b>	<b>132</b>	<b>127</b>	<b>147</b>	<b>138</b>	<b>145</b>	<b>170</b>	<b>117</b>	<b>108</b>	<b>135</b>	<b>1,776</b>	
Other Offices		<b>Total</b>	<b>3</b>	<b>0</b>	<b>1</b>	<b>3</b>	<b>3</b>	<b>0</b>	<b>1</b>	<b>0</b>	<b>0</b>	<b>0</b>	<b>0</b>	<b>2</b>	<b>13</b>	
Grand Total		<b>Total</b>	<b>7,301</b>	<b>6,439</b>	<b>7,501</b>	<b>6,943</b>	<b>7,634</b>	<b>6,383</b>	<b>5,586</b>	<b>5,374</b>	<b>6,866</b>	<b>7,894</b>	<b>6,423</b>	<b>6,289</b>	<b>7,557</b>	<b>88,190</b>

<sup>(1)</sup>CPS Reports or CWS Referrals not assigned to an office through the Assignment Designee, but were assigned to an office for an assessment or investigation.