



## **Child Protection and Permanency**

# **Monthly Screening and Investigation Report January 2022**

Christine Norbut Beyer, MSW  
Commissioner



## Table of Contents

Table 1: NJ State Central Registry Activity: Monthly Child Abuse and Neglect Hotline Calls, Intakes and Assignments to Child Protection & Permanency (CP&P) Offices

---

Chart 1: CP&P Annual Trends in Child Protection Services (CPS) Reports and Child Welfare Services (CWS) Referrals

---

Table 2: Assignments to CP&P Offices: CPS Reports and CWS Referrals

---

Table 3: Source of CPS Reports and CWS Referrals

---

Table 4: Monthly Count of CPS Reports and CWS Referrals Assigned to Counties

---

Table 5: Monthly Count of CPS Reports and CWS Referrals Assigned to CP&P Local Offices

---

**Table 1: NJ State Central Registry Activity: Monthly Child Abuse and Neglect Hotline Calls, Intakes and Assignments to CP&P Offices<sup>1,2,7</sup>**

2020-2021	Hotline Call Activity				Intakes Recorded in NJ SPIRIT <sup>6,8</sup>														Assignments to CP&P Offices				
	Total Calls to SCR <sup>3</sup>	Abandon Calls <sup>4</sup>	Average Time to Answer (seconds)	Resulting NJS Intakes <sup>5</sup>	CPS Reports		CWS Referrals		No Action Required (NAR)		Related Information (RI)		Information & Referral (I&R)		Information Only (IO)		Unusual Incident (UIRS)		CPS Reports		CWS Referrals		Total
					n	%	n	%	n	%	n	%	n	%	n	%	n	%	n	%	n	%	
January 2021	11,339	1,452	199	12,032	4,018	33.4%	794	6.6%	190	1.6%	2,818	23.4%	2,324	19.3%	1,888	15.7%	0	0.0%	4,018	83.5%	794	16.5%	4,812
February 2021	11,060	966	186	11,302	3,767	33.3%	655	5.8%	167	1.5%	2,499	22.1%	2,394	21.2%	1,820	16.1%	0	0.0%	3,767	85.2%	655	14.8%	4,422
March 2021	12,731	666	75	13,372	4,657	34.8%	829	6.2%	261	2.0%	2,868	21.4%	2,796	20.9%	1,961	14.7%	0	0.0%	4,657	84.9%	830	15.1%	5,487
April 2021	11,772	680	94	12,287	4,398	35.8%	750	6.1%	187	1.5%	2,796	22.8%	2,287	18.6%	1,869	15.2%	0	0.0%	4,398	85.4%	750	14.6%	5,148
May 2021	12,496	686	87	13,132	4,870	37.1%	734	5.6%	219	1.7%	3,025	23.0%	2,523	19.2%	1,761	13.4%	0	0.0%	4,870	86.9%	736	13.1%	5,606
June 2021	11,893	895	117	12,269	4,412	36.0%	591	4.8%	188	1.5%	2,943	24.0%	2,430	19.8%	1,705	13.9%	0	0.0%	4,412	88.2%	592	11.8%	5,004
July 2021	10,578	638	127	10,996	3,914	35.6%	569	5.2%	142	1.3%	2,642	24.0%	2,079	18.9%	1,650	15.0%	0	0.0%	3,914	87.3%	570	12.7%	4,484
August 2021	10,365	508	78	10,897	3,866	35.5%	482	4.4%	172	1.6%	2,371	21.8%	2,301	21.1%	1,704	15.6%	1	0.0%	3,866	88.9%	482	11.1%	4,348
September 2021	12,259	591	91	12,780	4,559	35.7%	564	4.4%	148	1.2%	2,794	21.9%	2,894	22.6%	1,819	14.2%	2	0.0%	4,559	89.0%	564	11.0%	5,123
October 2021	14,262	1,183	152	14,500	5,213	36.0%	631	4.4%	200	1.4%	3,287	22.7%	3,277	22.6%	1,890	13.0%	2	0.0%	5,213	89.2%	630	10.8%	5,843
November 2021	13,077	1,619	262	12,689	4,689	37.0%	539	4.2%	165	1.3%	2,817	22.2%	2,865	22.6%	1,609	12.7%	5	0.0%	4,689	89.7%	541	10.3%	5,230
December 2021	12,921	1,426	222	12,594	4,601	36.5%	558	4.4%	157	1.2%	2,746	21.8%	2,858	22.7%	1,660	13.2%	14	0.1%	4,601	89.2%	557	10.8%	5,158
<b>January 2022</b>	<b>11,733</b>	<b>942</b>	<b>163</b>	<b>11,798</b>	<b>4,274</b>	<b>36.2%</b>	<b>524</b>	<b>4.4%</b>	<b>116</b>	<b>1.0%</b>	<b>2,561</b>	<b>21.7%</b>	<b>2,641</b>	<b>22.4%</b>	<b>1,672</b>	<b>14.2%</b>	<b>10</b>	<b>0.1%</b>	<b>4,274</b>	<b>89.1%</b>	<b>523</b>	<b>10.9%</b>	<b>4,797</b>
	<b>12,037</b>	<b>942</b>	<b>143</b>	<b>12,358</b>	<b>4,403</b>	<b>35.6%</b>	<b>632</b>	<b>5.1%</b>	<b>178</b>	<b>1.4%</b>	<b>2,782</b>	<b>22.5%</b>	<b>2,590</b>	<b>21.0%</b>	<b>1,770</b>	<b>14.3%</b>	<b>3</b>	<b>0.0%</b>	<b>4,403</b>	<b>87.4%</b>	<b>633</b>	<b>12.6%</b>	<b>5,036</b>
<b>Overall Total</b>	<b>156,486</b>	<b>12,252</b>		<b>160,648</b>	<b>57,238</b>		<b>8,220</b>		<b>2,312</b>		<b>36,167</b>		<b>33,669</b>		<b>23,008</b>		<b>34</b>		<b>57,238</b>	<b>87.4%</b>	<b>8,224</b>	<b>12.6%</b>	<b>65,462</b>

<sup>1</sup>Comes from three distinct sources: (1) the Automatic Call Distribution (ACD) phone system; which keeps a count of the number of calls and call routing; (2) Monthly NJSpirit Intakes; which record decision making on calls received by hotline screeners, and (3) NJSpirit extracts of assigned CWS Referrals and CPS Reports.

<sup>2</sup>The number of Intakes, CPS Reports, and CWS Referrals are based on an extract from NJSpirit.

Data extracted by the Office of Research, Evaluation, and Reporting on **February 08, 2022** includes all Intakes, CPS Reports, and CWS Referrals received from **January 01, 2022** through **January 31, 2022**.

<sup>3</sup>The number calls received through the ACD System that were directed to a screener from any call-in phone number.

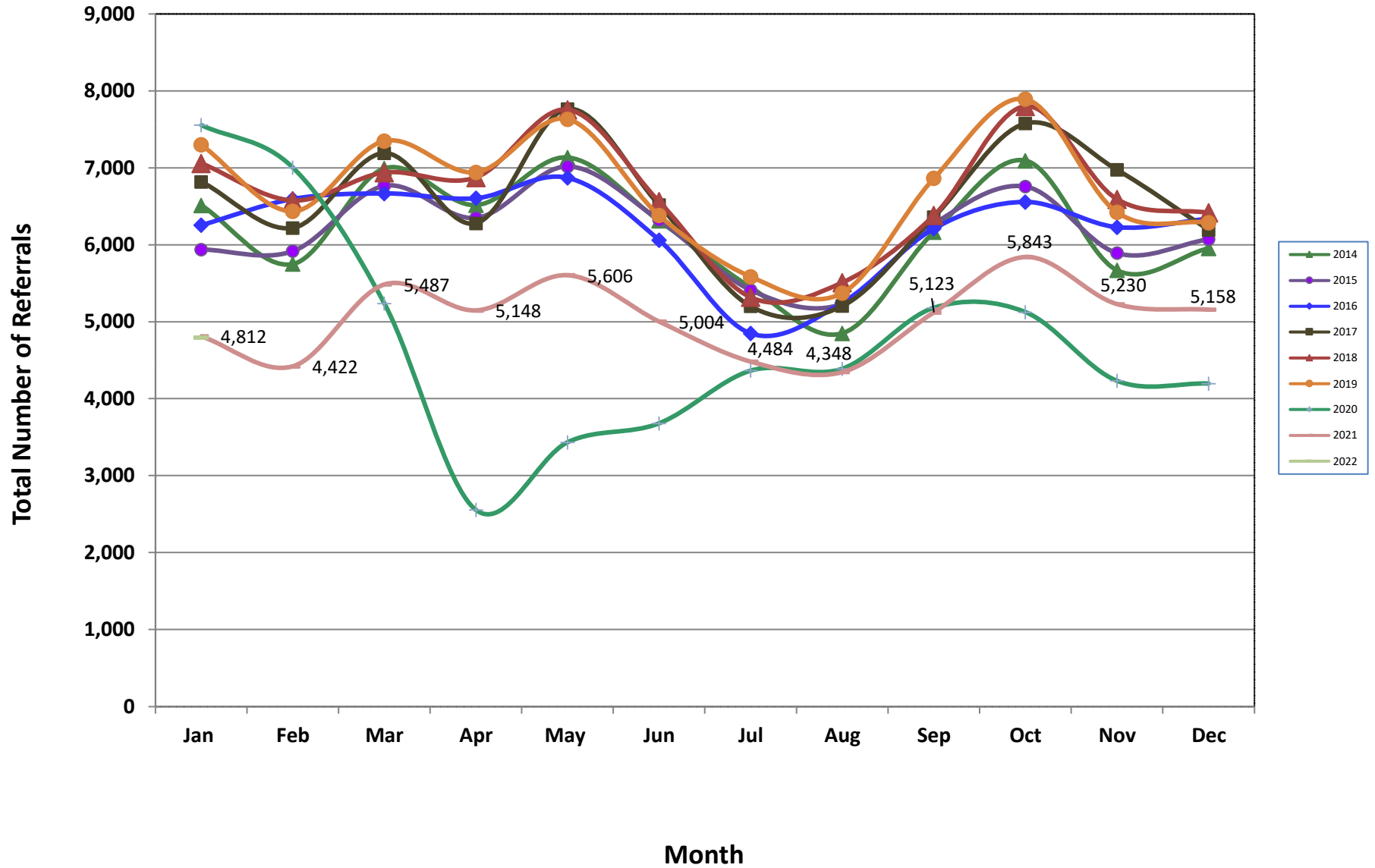
<sup>4</sup>The number of calls received through the ACD System that are abandoned either while waiting in queue or while ringing.

<sup>5</sup>The number of Intakes entered in NJSpirit from the number of calls received.

<sup>6</sup>The number of Intakes recorded in NJSpirit, by type of Intake. There is not a one-to-one relationship between an ACD call and an Intake; multiple calls to State Central Registry (SCR) may result in a single Intake, or one call may result in multiple Intakes.

<sup>7</sup>Intake: The process of documenting: a report of alleged abuse or neglect of a child (CPS); a request for services on behalf of a child, or a referral of a child for services (CWS); a call in which the caller provides additional or clarifying information about a current service case or active investigation (RI); informing a caller of, or referring a caller to, services available from other private or public sources (I&R); a call that requires no action by CP&P (NAR); or a response to a simple inquiry (IO).

### CP&P Annual Trends in CPS Reports and CWS Referrals



**Table 2: Assignments to CP&P Offices: CPS Reports and CWS Referrals<sup>1</sup>**

Intake Date <sup>3</sup>		CPS Reports <sup>2</sup>	CWS Referrals <sup>2</sup>	Total Assignments <sup>2</sup>
<b>2016</b>	<b>Jan 2016</b>	<b>4,686</b>	<b>1,571</b>	<b>6,257</b>
	Feb 2016	4,974	1,622	6,596
	Mar 2016	5,000	1,669	6,669
	Apr 2016	5,065	1,542	6,607
	May 2016	5,238	1,633	6,871
	Jun 2016	4,602	1,461	6,063
	Jul 2016	3,663	1,187	4,850
	Aug 2016	3,941	1,307	5,248
	Sep 2016	4,654	1,559	6,213
	Oct 2016	4,935	1,622	6,557
	Nov 2016	4,677	1,552	6,229
	Dec 2016	4,762	1,580	6,342
	<b>Total</b>	<b>56,197</b>	<b>18,305</b>	<b>74,502</b>
	<b>2017</b>	<b>Jan 2017</b>	<b>5,111</b>	<b>1,708</b>
Feb 2017		4,716	1,504	6,220
Mar 2017		5,349	1,843	7,192
Apr 2017		4,790	1,490	6,280
May 2017		5,847	1,919	7,766
Jun 2017		4,853	1,665	6,518
Jul 2017		3,814	1,389	5,203
Aug 2017		3,866	1,340	5,206
Sep 2017		4,719	1,643	6,362
Oct 2017		5,613	1,966	7,579
Nov 2017		5,223	1,753	6,976
Dec 2017		4,601	1,594	6,195
<b>Total</b>		<b>58,502</b>	<b>19,814</b>	<b>78,316</b>
<b>2018</b>		<b>Jan 2018</b>	<b>5,276</b>	<b>1,784</b>
	Feb 2018	4,933	1,644	6,577
	Mar 2018	5,212	1,727	6,939
	Apr 2018	5,275	1,601	6,876
	May 2018	5,920	1,836	7,756
	Jun 2018	4,948	1,615	6,563
	Jul 2018	4,011	1,308	5,319
	Aug 2018	4,102	1,408	5,510
	Sep 2018	4,748	1,634	6,382
	Oct 2018	5,790	2,011	7,801
	Nov 2018	4,973	1,620	6,593
	Dec 2018	4,891	1,527	6,418
	<b>Total</b>	<b>60,079</b>	<b>19,715</b>	<b>79,794</b>

**Table 2: Assignments to CP&P Offices: CPS Reports and CWS Referrals<sup>1</sup>**

Intake Date <sup>3</sup>		CPS Reports <sup>2</sup>	CWS Referrals <sup>2</sup>	Total Assignments <sup>2</sup>
2019	Jan 2019	5,443	1,858	7,301
	Feb 2019	4,811	1,628	6,439
	Mar 2019	5,677	1,824	7,501
	Apr 2019	5,313	1,630	6,943
	May 2019	5,853	1,781	7,634
	Jun 2019	4,874	1,509	6,383
	Jul 2019	4,277	1,309	5,586
	Aug 2019	4,068	1,306	5,374
	Sep 2019	5,315	1,551	6,866
	Oct 2019	5,968	1,926	7,894
	Nov 2019	4,991	1,432	6,423
	Dec 2019	4,855	1,434	6,289
	<b>Total</b>	<b>61,445</b>	<b>19,188</b>	<b>80,633</b>
2020	Jan 2020	5,715	1,842	7,557
	Feb 2020	5,380	1,624	7,004
	Mar 2020	4,172	1,065	5,237
	Apr 2020	2,149	407	2,556
	May 2020	2,897	537	3,434
	Jun 2020	3,045	636	3,681
	Jul 2020	3,628	738	4,366
	Aug 2020	3,569	822	4,391
	Sep 2020	4,153	1,030	5,183
	Oct 2020	4,257	868	5,125
	Nov 2020	3,564	670	4,234
	Dec 2020	3,517	681	4,198
	<b>Total</b>	<b>46,046</b>	<b>10,920</b>	<b>56,966</b>
2021	Jan 2021	4,018	794	4,812
	Feb 2021	3,767	655	4,422
	Mar 2021	4,657	830	5,487
	Apr 2021	4,398	750	5,148
	May 2021	4,870	736	5,606
	Jun 2021	4,412	592	5,004
	Jul 2021	3,914	570	4,484
	Aug 2021	3,866	482	4,348
	Sep 2021	4,559	564	5,123
	Oct 2021	5,213	630	5,843
	Nov 2021	4,689	541	5,230
	Dec 2021	4,601	557	5,158
	<b>Total</b>	<b>52,964</b>	<b>7,701</b>	<b>60,665</b>
2022	Jan 2022	4,274	523	4,797
	<b>Total</b>	<b>4,274</b>	<b>523</b>	<b>4,797</b>
<b>Grand Total</b>		<b>335,233</b>	<b>95,643</b>	<b>430,876</b>

**Table 3: Source of CPS Reports and CWS Referrals**

CPS Reports and CWS Referrals	Source	Jan 2021	Feb 2021	Mar 2021	Apr 2021	May 2021	Jun 2021	Jul 2021	Aug 2021	Sep 2021	Oct 2021	Nov 2021	Dec 2021	Jan 2022		13 Month Total	
	School Staff	709	664	989	759	913	531	145	83	863	1,450	1,303	1,252	<b>983</b>	<b>20%</b>	10,644	16%
	Healthcare Provider	835	815	930	897	917	819	839	789	824	780	746	706	<b>746</b>	<b>16%</b>	10,643	16%
	Law Enforcement	1,226	1,122	1,311	1,329	1,542	1,466	1,442	1,384	1,397	1,446	1,340	1,341	<b>1,238</b>	<b>26%</b>	17,584	27%
	Government Agency	280	261	323	309	272	221	248	265	266	222	205	209	<b>212</b>	<b>4%</b>	3,293	5%
	Parent	374	302	392	409	387	396	392	404	347	393	377	378	<b>347</b>	<b>7%</b>	4,898	7%
	Relative/Friend/Neighbor	336	284	332	338	355	382	362	363	372	350	289	342	<b>337</b>	<b>7%</b>	4,442	7%
	Anonymous	442	415	499	450	487	476	387	401	444	506	364	367	<b>366</b>	<b>8%</b>	5,604	9%
	CP&P	62	61	96	89	89	76	58	45	60	73	45	49	<b>54</b>	<b>1%</b>	857	1%
	Court/Legal	99	91	127	102	111	119	125	88	120	126	89	89	<b>100</b>	<b>2%</b>	1,386	2%
	Community Group/Individual	168	152	182	159	175	176	149	159	137	175	169	144	<b>158</b>	<b>3%</b>	2,103	3%
	Facility Staff (incl Correctional Facility)	56	48	52	64	67	66	65	69	51	55	47	53	<b>54</b>	<b>1%</b>	747	1%
	Child (Self)	29	27	35	37	33	22	26	49	41	42	28	30	<b>29</b>	<b>1%</b>	428	1%
	Other	187	171	204	197	245	245	226	236	189	214	217	182	<b>160</b>	<b>3%</b>	2,673	4%
Daycare/Babysitter	9	9	15	9	13	9	20	13	12	11	11	16	<b>13</b>	<b>0%</b>	160	0%	
<b>Total</b>	<b>4,812</b>	<b>4,422</b>	<b>5,487</b>	<b>5,148</b>	<b>5,606</b>	<b>5,004</b>	<b>4,484</b>	<b>4,348</b>	<b>5,123</b>	<b>5,843</b>	<b>5,230</b>	<b>5,158</b>	<b>4,797</b>		<b>65,462</b>		

**Table 4: Monthly Count of CPS Reports and CWS Referrals Assigned to Counties**

County	Jan 2021	Feb 2021	Mar 2021	Apr 2021	May 2021	Jun 2021	Jul 2021	Aug 2021	Sep 2021	Oct 2021	Nov 2021	Dec 2021	Jan 2022	Average Number of Assignments Last 13 Months	Dec 21 to Jan 22 Numerical Difference
Atlantic	205	185	237	224	265	241	197	182	215	255	234	215	189	219	-26
Bergen	276	289	323	314	343	273	255	249	325	350	345	360	290	307	-70
Burlington	230	232	297	269	307	286	238	223	263	280	264	270	264	263	-6
Camden	420	432	497	459	456	403	381	371	466	511	407	419	404	433	-15
Cape May	70	73	87	68	81	56	81	72	70	70	66	70	62	71	-8
Cumberland	141	154	203	190	173	165	153	140	180	196	167	190	149	169	-41
Essex	458	452	530	441	520	501	457	442	484	565	535	489	456	487	-33
Gloucester	197	176	239	237	219	228	205	207	208	221	215	204	216	213	12
Hudson	301	243	305	313	341	319	255	287	303	371	349	321	341	311	20
Hunterdon	46	42	41	47	47	34	37	33	39	52	44	44	40	42	-4
Mercer	201	184	221	213	264	230	200	185	222	245	218	230	189	216	-41
Middlesex	356	295	382	364	428	349	299	317	385	472	355	408	356	367	-52
Monmouth	304	289	304	294	296	262	249	256	250	331	294	294	260	283	-34
Morris	182	139	198	168	162	190	141	137	173	185	189	176	193	172	17
Ocean	321	291	394	389	396	360	290	310	337	382	341	333	304	342	-29
Passaic	328	243	310	326	346	291	285	245	313	402	350	330	274	311	-56
Salem	71	64	83	76	76	64	61	48	75	78	56	57	65	67	8
Somerset	114	120	130	139	153	130	108	97	131	148	130	111	112	125	1
Sussex	63	73	103	95	78	70	62	67	90	99	85	72	84	80	12
Union	256	218	271	260	321	266	240	226	256	293	277	277	257	263	-20
Warren	93	70	102	73	104	86	87	55	99	68	93	67	86	83	19
<b>County Subtotals</b>	<b>4,633</b>	<b>4,264</b>	<b>5,257</b>	<b>4,959</b>	<b>5,376</b>	<b>4,804</b>	<b>4,281</b>	<b>4,149</b>	<b>4,884</b>	<b>5,574</b>	<b>5,014</b>	<b>4,937</b>	<b>4,591</b>	<b>4,825</b>	<b>-346</b>
Central Region IAIU	28	20	30	20	41	22	35	25	42	53	31	37	32	32	-5
Metro Region IAIU	12	11	22	14	18	17	11	22	36	29	26	21	27	20	6
Northern Region IAIU	18	14	23	20	28	18	23	19	27	39	44	42	28	26	-14
Southern Region IAIU	33	34	46	35	48	33	42	42	51	41	33	42	35	40	-7
<b>IAIU Subtotals</b>	<b>91</b>	<b>79</b>	<b>121</b>	<b>89</b>	<b>135</b>	<b>90</b>	<b>111</b>	<b>108</b>	<b>156</b>	<b>162</b>	<b>134</b>	<b>142</b>	<b>122</b>	<b>118</b>	<b>-20</b>
<sup>1</sup> Unable to Determine	85	79	108	98	94	108	89	91	83	107	82	78	84	91	6
Other Offices	3	0	1	2	1	2	3	0	0	0	0	1	0	1	-1
<b>Grand Total</b>	<b>4,812</b>	<b>4,422</b>	<b>5,487</b>	<b>5,148</b>	<b>5,606</b>	<b>5,004</b>	<b>4,484</b>	<b>4,348</b>	<b>5,123</b>	<b>5,843</b>	<b>5,230</b>	<b>5,158</b>	<b>4,797</b>	<b>5,036</b>	<b>-361</b>

<sup>1</sup>CPS Reports or CWS Referrals not assigned to an office through the Assignment Designee, but were assigned to an office for an assessment or investigation.





**Table 5: Monthly Count of CPS Reports and CWS Referrals Assigned to CP&P Local Offices**

County	Local Office	Type of Referral														Total
			Jan 2021	Feb 2021	Mar 2021	Apr 2021	May 2021	Jun 2021	Jul 2021	Aug 2021	Sep 2021	Oct 2021	Nov 2021	Dec 2021	Jan 2022	
ATLANTIC	Atlantic East	CPS	95	98	105	105	128	130	95	97	106	126	118	104	114	1,421
		CWS	17	14	15	21	22	14	12	17	10	13	12	14	9	190
		<b>Total</b>	<b>112</b>	<b>112</b>	<b>120</b>	<b>126</b>	<b>150</b>	<b>144</b>	<b>107</b>	<b>114</b>	<b>116</b>	<b>139</b>	<b>130</b>	<b>118</b>	<b>123</b>	<b>1,611</b>
	Atlantic West	CPS	76	63	100	87	94	83	83	60	82	104	90	85	58	1,065
		CWS	17	10	17	11	21	14	7	8	17	12	14	12	8	168
		<b>Total</b>	<b>93</b>	<b>73</b>	<b>117</b>	<b>98</b>	<b>115</b>	<b>97</b>	<b>90</b>	<b>68</b>	<b>99</b>	<b>116</b>	<b>104</b>	<b>97</b>	<b>66</b>	<b>1,233</b>
	County Totals	CPS	171	161	205	192	222	213	178	157	188	230	208	189	172	2,486
		CWS	34	24	32	32	43	28	19	25	27	25	26	26	17	358
		<b>Total</b>	<b>205</b>	<b>185</b>	<b>237</b>	<b>224</b>	<b>265</b>	<b>241</b>	<b>197</b>	<b>182</b>	<b>215</b>	<b>255</b>	<b>234</b>	<b>215</b>	<b>189</b>	<b>2,844</b>
BERGEN	Bergen Central	CPS	101	96	123	111	122	89	85	85	132	139	133	127	111	1,454
		CWS	23	25	18	17	12	15	10	6	13	19	18	11	13	200
		<b>Total</b>	<b>124</b>	<b>121</b>	<b>141</b>	<b>128</b>	<b>134</b>	<b>104</b>	<b>95</b>	<b>91</b>	<b>145</b>	<b>158</b>	<b>151</b>	<b>138</b>	<b>124</b>	<b>1,654</b>
	Bergen South	CPS	127	140	157	161	191	157	139	147	157	177	174	197	148	2,072
		CWS	25	28	25	25	18	12	21	11	23	15	20	25	18	266
		<b>Total</b>	<b>152</b>	<b>168</b>	<b>182</b>	<b>186</b>	<b>209</b>	<b>169</b>	<b>160</b>	<b>158</b>	<b>180</b>	<b>192</b>	<b>194</b>	<b>222</b>	<b>166</b>	<b>2,338</b>
	County Totals	CPS	228	236	280	272	313	246	224	232	289	316	307	324	259	3,526
		CWS	48	53	43	42	30	27	31	17	36	34	38	36	31	466
		<b>Total</b>	<b>276</b>	<b>289</b>	<b>323</b>	<b>314</b>	<b>343</b>	<b>273</b>	<b>255</b>	<b>249</b>	<b>325</b>	<b>350</b>	<b>345</b>	<b>360</b>	<b>290</b>	<b>3,992</b>
BURLINGTON	Burlington East	CPS	92	111	133	121	128	129	91	91	103	137	115	111	119	1,481
		CWS	21	19	18	27	21	21	20	10	17	11	18	16	16	235
		<b>Total</b>	<b>113</b>	<b>130</b>	<b>151</b>	<b>148</b>	<b>149</b>	<b>150</b>	<b>111</b>	<b>101</b>	<b>120</b>	<b>148</b>	<b>133</b>	<b>127</b>	<b>135</b>	<b>1,716</b>
	Burlington West	CPS	89	87	122	98	135	117	105	100	125	115	115	128	119	1,455
		CWS	28	15	24	23	23	19	22	22	18	17	16	15	10	252
		<b>Total</b>	<b>117</b>	<b>102</b>	<b>146</b>	<b>121</b>	<b>158</b>	<b>136</b>	<b>127</b>	<b>122</b>	<b>143</b>	<b>132</b>	<b>131</b>	<b>143</b>	<b>129</b>	<b>1,707</b>
	County Totals	CPS	181	198	255	219	263	246	196	191	228	252	230	239	238	2,936
		CWS	49	34	42	50	44	40	42	32	35	28	34	31	26	487
		<b>Total</b>	<b>230</b>	<b>232</b>	<b>297</b>	<b>269</b>	<b>307</b>	<b>286</b>	<b>238</b>	<b>223</b>	<b>263</b>	<b>280</b>	<b>264</b>	<b>270</b>	<b>264</b>	<b>3,423</b>
CAMDEN	Camden Central	CPS	100	85	115	91	105	88	86	88	105	117	93	91	91	1,255
		CWS	20	17	22	12	17	13	12	16	15	17	15	14	16	206
		<b>Total</b>	<b>120</b>	<b>102</b>	<b>137</b>	<b>103</b>	<b>122</b>	<b>101</b>	<b>98</b>	<b>104</b>	<b>120</b>	<b>134</b>	<b>108</b>	<b>105</b>	<b>107</b>	<b>1,461</b>
	Camden East	CPS	93	88	118	112	104	84	81	84	101	128	94	81	84	1,252
		CWS	13	20	16	18	10	13	13	16	10	16	14	20	22	201
		<b>Total</b>	<b>106</b>	<b>108</b>	<b>134</b>	<b>130</b>	<b>114</b>	<b>97</b>	<b>94</b>	<b>100</b>	<b>111</b>	<b>144</b>	<b>108</b>	<b>101</b>	<b>106</b>	<b>1,453</b>
	Camden North	CPS	81	107	85	93	97	92	79	67	97	102	91	87	89	1,167
		CWS	17	15	13	15	17	11	9	13	17	15	5	14	9	170
		<b>Total</b>	<b>98</b>	<b>122</b>	<b>98</b>	<b>108</b>	<b>114</b>	<b>103</b>	<b>88</b>	<b>80</b>	<b>114</b>	<b>117</b>	<b>96</b>	<b>101</b>	<b>98</b>	<b>1,337</b>
	Camden South	CPS	77	93	108	102	91	92	88	75	108	96	85	94	83	1,192
		CWS	19	7	20	16	15	10	13	12	13	20	10	18	10	183
		<b>Total</b>	<b>96</b>	<b>100</b>	<b>128</b>	<b>118</b>	<b>106</b>	<b>102</b>	<b>101</b>	<b>87</b>	<b>121</b>	<b>116</b>	<b>95</b>	<b>112</b>	<b>93</b>	<b>1,375</b>
	County Totals	CPS	351	373	426	398	397	356	334	314	411	443	363	353	347	4,866
		CWS	69	59	71	61	59	47	47	57	55	68	44	66	57	760
		<b>Total</b>	<b>420</b>	<b>432</b>	<b>497</b>	<b>459</b>	<b>456</b>	<b>403</b>	<b>381</b>	<b>371</b>	<b>466</b>	<b>511</b>	<b>407</b>	<b>419</b>	<b>404</b>	<b>5,626</b>
CAPE MAY	Cape May	CPS	59	59	77	60	70	51	63	64	61	61	56	61	56	798
		CWS	11	14	10	8	11	5	18	8	9	9	10	9	6	128
		<b>Total</b>	<b>70</b>	<b>73</b>	<b>87</b>	<b>68</b>	<b>81</b>	<b>56</b>	<b>81</b>	<b>72</b>	<b>70</b>	<b>70</b>	<b>66</b>	<b>70</b>	<b>62</b>	<b>926</b>
	County Totals	CPS	59	59	77	60	70	51	63	64	61	61	56	61	56	798
		<b>Total</b>	<b>70</b>	<b>73</b>	<b>87</b>	<b>68</b>	<b>81</b>	<b>56</b>	<b>81</b>	<b>72</b>	<b>70</b>	<b>70</b>	<b>66</b>	<b>70</b>	<b>62</b>	<b>926</b>
CUMBERLAND	Cumberland East	CPS	45	41	75	55	54	66	68	58	77	75	59	71	56	800
		CWS	17	7	11	11	11	11	4	4	8	11	6	8	11	120
		<b>Total</b>	<b>62</b>	<b>48</b>	<b>86</b>	<b>66</b>	<b>65</b>	<b>77</b>	<b>72</b>	<b>62</b>	<b>85</b>	<b>86</b>	<b>65</b>	<b>79</b>	<b>67</b>	<b>920</b>
	Cumberland West	CPS	68	91	101	110	91	74	73	71	89	102	94	96	67	1,127
		CWS	11	15	16	14	17	14	8	7	6	8	8	15	15	154
		<b>Total</b>	<b>79</b>	<b>106</b>	<b>117</b>	<b>124</b>	<b>108</b>	<b>88</b>	<b>81</b>	<b>78</b>	<b>95</b>	<b>110</b>	<b>102</b>	<b>111</b>	<b>82</b>	<b>1,281</b>
	County Totals	CPS	113	132	176	165	145	140	141	129	166	177	153	167	123	1,927
<b>Total</b>		<b>141</b>	<b>154</b>	<b>203</b>	<b>190</b>	<b>173</b>	<b>165</b>	<b>153</b>	<b>140</b>	<b>180</b>	<b>196</b>	<b>167</b>	<b>190</b>	<b>149</b>	<b>2,201</b>	

Data in this report is preliminary and may differ from any final report. This report is produced to ensure continuous quality improvement throughout DCF.



**Table 5: Monthly Count of CPS Reports and CWS Referrals Assigned to CP&P Local Offices**

County	Local Office	Type of Referral														Total
			Jan 2021	Feb 2021	Mar 2021	Apr 2021	May 2021	Jun 2021	Jul 2021	Aug 2021	Sep 2021	Oct 2021	Nov 2021	Dec 2021	Jan 2022	
ESSEX	Essex Central	CPS	81	80	68	63	62	63	77	59	75	88	78	68	57	919
		CWS	24	13	11	14	9	9	15	12	6	14	7	12	6	152
		<b>Total</b>	<b>105</b>	<b>93</b>	<b>79</b>	<b>77</b>	<b>71</b>	<b>72</b>	<b>92</b>	<b>71</b>	<b>81</b>	<b>102</b>	<b>85</b>	<b>80</b>	<b>63</b>	<b>1,071</b>
	Essex North	CPS	38	58	81	66	79	71	68	49	50	78	85	109	81	913
		CWS	8	12	20	15	15	7	7	1	3	9	12	8	13	130
		<b>Total</b>	<b>46</b>	<b>70</b>	<b>101</b>	<b>81</b>	<b>94</b>	<b>78</b>	<b>75</b>	<b>50</b>	<b>53</b>	<b>87</b>	<b>97</b>	<b>117</b>	<b>94</b>	<b>1,043</b>
	Essex South	CPS	57	71	70	64	81	86	61	74	76	104	84	62	65	955
		CWS	14	13	23	13	12	13	9	9	13	14	11	15	8	167
		<b>Total</b>	<b>71</b>	<b>84</b>	<b>93</b>	<b>77</b>	<b>93</b>	<b>99</b>	<b>70</b>	<b>83</b>	<b>89</b>	<b>118</b>	<b>95</b>	<b>77</b>	<b>73</b>	<b>1122</b>
	Newark Center City	CPS	61	70	63	77	74	67	67	64	75	86	64	75	79	922
		CWS	10	5	15	9	5	14	3	11	12	6	11	13	2	116
		<b>Total</b>	<b>71</b>	<b>75</b>	<b>78</b>	<b>86</b>	<b>79</b>	<b>81</b>	<b>70</b>	<b>75</b>	<b>87</b>	<b>92</b>	<b>75</b>	<b>88</b>	<b>81</b>	<b>1038</b>
	Newark Northeast	CPS	62	54	66	54	83	70	61	61	71	75	80	50	68	855
		CWS	13	9	13	11	10	11	18	7	9	14	6	5	8	134
<b>Total</b>		<b>75</b>	<b>63</b>	<b>79</b>	<b>65</b>	<b>93</b>	<b>81</b>	<b>79</b>	<b>68</b>	<b>80</b>	<b>89</b>	<b>86</b>	<b>55</b>	<b>76</b>	<b>989</b>	
Newark South	CPS	74	56	82	45	83	86	58	81	83	72	85	65	55	925	
	CWS	16	11	18	10	7	4	13	14	11	5	12	7	14	142	
	<b>Total</b>	<b>90</b>	<b>67</b>	<b>100</b>	<b>55</b>	<b>90</b>	<b>90</b>	<b>71</b>	<b>95</b>	<b>94</b>	<b>77</b>	<b>97</b>	<b>72</b>	<b>69</b>	<b>1067</b>	
County Totals	CPS	373	389	430	369	462	443	392	388	430	503	476	429	405	5489	
	CWS	85	63	100	72	58	58	65	54	54	62	59	60	51	841	
	<b>Total</b>	<b>458</b>	<b>452</b>	<b>530</b>	<b>441</b>	<b>520</b>	<b>501</b>	<b>457</b>	<b>442</b>	<b>484</b>	<b>565</b>	<b>535</b>	<b>489</b>	<b>456</b>	<b>6330</b>	
GLOUCESTER	Gloucester East	CPS	65	62	93	91	94	85	85	76	80	97	88	90	86	1092
		CWS	18	13	19	17	16	13	15	8	19	13	13	7	14	185
		<b>Total</b>	<b>83</b>	<b>75</b>	<b>112</b>	<b>108</b>	<b>110</b>	<b>98</b>	<b>100</b>	<b>84</b>	<b>99</b>	<b>110</b>	<b>101</b>	<b>97</b>	<b>100</b>	<b>1277</b>
	Gloucester West	CPS	98	89	116	114	96	109	90	113	97	93	95	92	103	1305
		CWS	16	12	11	15	13	21	15	10	12	18	19	15	13	190
		<b>Total</b>	<b>114</b>	<b>101</b>	<b>127</b>	<b>129</b>	<b>109</b>	<b>130</b>	<b>105</b>	<b>123</b>	<b>109</b>	<b>111</b>	<b>114</b>	<b>107</b>	<b>116</b>	<b>1495</b>
	County Totals	CPS	163	151	209	205	190	194	175	189	177	190	183	182	189	2397
CWS		34	25	30	32	29	34	30	18	31	31	32	22	27	375	
<b>Total</b>		<b>197</b>	<b>176</b>	<b>239</b>	<b>237</b>	<b>219</b>	<b>228</b>	<b>205</b>	<b>207</b>	<b>208</b>	<b>221</b>	<b>215</b>	<b>204</b>	<b>216</b>	<b>2772</b>	
HUDSON	Hudson Central	CPS	84	68	98	78	96	78	63	104	78	111	80	70	78	1086
		CWS	25	6	32	16	16	20	11	8	15	13	18	15	9	204
		<b>Total</b>	<b>109</b>	<b>74</b>	<b>130</b>	<b>94</b>	<b>112</b>	<b>98</b>	<b>74</b>	<b>112</b>	<b>93</b>	<b>124</b>	<b>98</b>	<b>85</b>	<b>87</b>	<b>1290</b>
	Hudson North	CPS	58	55	55	59	72	57	60	60	59	68	80	81	90	854
		CWS	13	15	11	14	14	7	11	12	11	9	6	8	5	136
		<b>Total</b>	<b>71</b>	<b>70</b>	<b>66</b>	<b>73</b>	<b>86</b>	<b>64</b>	<b>71</b>	<b>72</b>	<b>70</b>	<b>77</b>	<b>86</b>	<b>89</b>	<b>95</b>	<b>990</b>
	Hudson South	CPS	35	25	34	50	50	74	37	41	51	54	68	59	62	640
		CWS	10	7	9	14	12	8	7	3	9	12	4	5	12	112
		<b>Total</b>	<b>45</b>	<b>32</b>	<b>43</b>	<b>64</b>	<b>62</b>	<b>82</b>	<b>44</b>	<b>44</b>	<b>60</b>	<b>66</b>	<b>72</b>	<b>64</b>	<b>74</b>	<b>752</b>
	Hudson West	CPS	65	55	58	69	68	65	61	52	72	93	87	77	76	898
		CWS	11	12	8	13	13	10	5	7	8	11	6	6	9	119
		<b>Total</b>	<b>76</b>	<b>67</b>	<b>66</b>	<b>82</b>	<b>81</b>	<b>75</b>	<b>66</b>	<b>59</b>	<b>80</b>	<b>104</b>	<b>93</b>	<b>83</b>	<b>85</b>	<b>1017</b>
	County Totals	CPS	242	203	245	256	286	274	221	257	260	326	315	287	306	3478
		CWS	59	40	60	57	55	45	34	30	43	45	34	34	35	571
<b>Total</b>		<b>301</b>	<b>243</b>	<b>305</b>	<b>313</b>	<b>341</b>	<b>319</b>	<b>255</b>	<b>287</b>	<b>303</b>	<b>371</b>	<b>349</b>	<b>321</b>	<b>341</b>	<b>4049</b>	
HUNTERDON	Hunterdon	CPS	38	38	34	38	38	29	35	32	35	49	42	42	36	486
		CWS	8	4	7	9	9	5	2	1	4	3	2	2	4	60
		<b>Total</b>	<b>46</b>	<b>42</b>	<b>41</b>	<b>47</b>	<b>47</b>	<b>34</b>	<b>37</b>	<b>33</b>	<b>39</b>	<b>52</b>	<b>44</b>	<b>44</b>	<b>40</b>	<b>546</b>
	County Totals	CPS	38	38	34	38	38	29	35	32	35	49	42	42	36	486
		CWS	8	4	7	9	9	5	2	1	4	3	2	2	4	60
<b>Total</b>	<b>46</b>	<b>42</b>	<b>41</b>	<b>47</b>	<b>47</b>	<b>34</b>	<b>37</b>	<b>33</b>	<b>39</b>	<b>52</b>	<b>44</b>	<b>44</b>	<b>40</b>	<b>546</b>		
MERCER	Mercer North	CPS	91	81	93	108	128	113	92	90	103	85	97	95	87	1263
		CWS	13	11	9	8	11	17	20	12	13	18	12	12	13	169
		<b>Total</b>	<b>104</b>	<b>92</b>	<b>102</b>	<b>116</b>	<b>139</b>	<b>130</b>	<b>112</b>	<b>102</b>	<b>116</b>	<b>103</b>	<b>109</b>	<b>107</b>	<b>100</b>	<b>1432</b>
	Mercer South	CPS	71	72	99	81	109	88	74	76	91	128	101	108	76	1174
		CWS	26	20	20	16	16	12	14	7	15	14	8	15	13	196
		<b>Total</b>	<b>97</b>	<b>92</b>	<b>119</b>	<b>97</b>	<b>125</b>	<b>100</b>	<b>88</b>	<b>83</b>	<b>106</b>	<b>142</b>	<b>109</b>	<b>123</b>	<b>89</b>	<b>1370</b>
	County Totals	CPS	162	153	192	189	237	201	166	166	194	213	198	203	163	2437
CWS		39	31	29	24	27	29	34	19	28	32	20	27	26	365	
<b>Total</b>		<b>201</b>	<b>184</b>	<b>221</b>	<b>213</b>	<b>264</b>	<b>230</b>	<b>200</b>	<b>185</b>	<b>222</b>	<b>245</b>	<b>218</b>	<b>230</b>	<b>189</b>	<b>2802</b>	

Data in this report is preliminary and may differ from any final report. This report is produced to ensure continuous quality improvement throughout DCF.



**Table 5: Monthly Count of CPS Reports and CWS Referrals Assigned to CP&P Local Offices**

County	Local Office	Type of Referral														Total
			Jan 2021	Feb 2021	Mar 2021	Apr 2021	May 2021	Jun 2021	Jul 2021	Aug 2021	Sep 2021	Oct 2021	Nov 2021	Dec 2021	Jan 2022	
MIDDLESEX	Middlesex Central	CPS	104	73	98	110	99	103	81	71	91	118	101	114	114	1277
		CWS	14	17	13	20	11	15	10	7	12	17	9	10	5	160
		<b>Total</b>	<b>118</b>	<b>90</b>	<b>111</b>	<b>130</b>	<b>110</b>	<b>118</b>	<b>91</b>	<b>78</b>	<b>103</b>	<b>135</b>	<b>110</b>	<b>124</b>	<b>119</b>	<b>1437</b>
	Middlesex Coastal	CPS	95	84	121	96	131	102	93	109	132	149	120	120	113	1465
		CWS	18	13	21	16	20	11	9	14	9	12	9	12	6	170
		<b>Total</b>	<b>113</b>	<b>97</b>	<b>142</b>	<b>112</b>	<b>151</b>	<b>113</b>	<b>102</b>	<b>123</b>	<b>141</b>	<b>161</b>	<b>129</b>	<b>132</b>	<b>119</b>	<b>1635</b>
	Middlesex West	CPS	106	91	107	104	142	104	95	106	127	162	106	146	109	1505
		CWS	19	17	22	18	25	14	11	10	14	14	10	6	9	189
		<b>Total</b>	<b>125</b>	<b>108</b>	<b>129</b>	<b>122</b>	<b>167</b>	<b>118</b>	<b>106</b>	<b>116</b>	<b>141</b>	<b>176</b>	<b>116</b>	<b>152</b>	<b>118</b>	<b>1694</b>
	County Totals	CPS	305	248	326	310	372	309	269	286	350	429	327	380	336	4247
CWS		51	47	56	54	56	40	30	31	35	43	28	28	20	519	
<b>Total</b>		<b>356</b>	<b>295</b>	<b>382</b>	<b>364</b>	<b>428</b>	<b>349</b>	<b>299</b>	<b>317</b>	<b>385</b>	<b>472</b>	<b>355</b>	<b>408</b>	<b>356</b>	<b>4766</b>	
MONMOUTH	Monmouth North	CPS	139	149	154	135	146	124	121	125	123	186	132	158	132	1824
		CWS	24	21	22	15	20	11	10	16	11	14	17	17	11	209
		<b>Total</b>	<b>163</b>	<b>170</b>	<b>176</b>	<b>150</b>	<b>166</b>	<b>135</b>	<b>131</b>	<b>141</b>	<b>134</b>	<b>200</b>	<b>149</b>	<b>175</b>	<b>143</b>	<b>2033</b>
	Monmouth South	CPS	124	102	114	131	120	116	107	109	109	120	134	108	100	1494
		CWS	17	17	14	13	10	11	11	6	7	11	11	11	17	156
		<b>Total</b>	<b>141</b>	<b>119</b>	<b>128</b>	<b>144</b>	<b>130</b>	<b>127</b>	<b>118</b>	<b>115</b>	<b>116</b>	<b>131</b>	<b>145</b>	<b>119</b>	<b>117</b>	<b>1650</b>
	County Totals	CPS	263	251	268	266	266	240	228	234	232	306	266	266	232	3318
		CWS	41	38	36	28	30	22	21	22	18	25	28	28	28	365
		<b>Total</b>	<b>304</b>	<b>289</b>	<b>304</b>	<b>294</b>	<b>296</b>	<b>262</b>	<b>249</b>	<b>256</b>	<b>250</b>	<b>331</b>	<b>294</b>	<b>294</b>	<b>260</b>	<b>3683</b>
MORRIS	Morris East	CPS	74	58	82	62	75	89	53	70	67	74	82	73	75	934
		CWS	8	9	14	14	11	7	7	4	8	6	7	12	11	118
		<b>Total</b>	<b>82</b>	<b>67</b>	<b>96</b>	<b>76</b>	<b>86</b>	<b>96</b>	<b>60</b>	<b>74</b>	<b>75</b>	<b>80</b>	<b>89</b>	<b>85</b>	<b>86</b>	<b>1052</b>
	Morris West	CPS	90	65	89	78	70	86	76	57	89	95	90	84	99	1068
		CWS	10	7	13	14	6	8	5	6	9	10	10	7	8	113
		<b>Total</b>	<b>100</b>	<b>72</b>	<b>102</b>	<b>92</b>	<b>76</b>	<b>94</b>	<b>81</b>	<b>63</b>	<b>98</b>	<b>105</b>	<b>100</b>	<b>91</b>	<b>107</b>	<b>1181</b>
	County Totals	CPS	164	123	171	140	145	175	129	127	156	169	172	157	174	2002
		CWS	18	16	27	28	17	15	12	10	17	16	17	19	19	231
		<b>Total</b>	<b>182</b>	<b>139</b>	<b>198</b>	<b>168</b>	<b>162</b>	<b>190</b>	<b>141</b>	<b>137</b>	<b>173</b>	<b>185</b>	<b>189</b>	<b>176</b>	<b>193</b>	<b>2233</b>
OCEAN	Ocean North	CPS	166	139	167	171	182	173	142	148	162	178	172	159	154	2113
		CWS	17	20	34	31	19	20	18	17	11	15	13	14	18	247
		<b>Total</b>	<b>183</b>	<b>159</b>	<b>201</b>	<b>202</b>	<b>201</b>	<b>193</b>	<b>160</b>	<b>165</b>	<b>173</b>	<b>193</b>	<b>185</b>	<b>173</b>	<b>172</b>	<b>2360</b>
	Ocean South	CPS	119	109	176	161	176	148	110	136	149	170	144	145	123	1866
		CWS	19	23	17	26	19	19	20	9	15	19	12	15	9	222
		<b>Total</b>	<b>138</b>	<b>132</b>	<b>193</b>	<b>187</b>	<b>195</b>	<b>167</b>	<b>130</b>	<b>145</b>	<b>164</b>	<b>189</b>	<b>156</b>	<b>160</b>	<b>132</b>	<b>2088</b>
	County Totals	CPS	285	248	343	332	358	321	252	284	311	348	316	304	277	3979
		CWS	36	43	51	57	38	39	38	26	26	34	25	29	27	469
		<b>Total</b>	<b>321</b>	<b>291</b>	<b>394</b>	<b>389</b>	<b>396</b>	<b>360</b>	<b>290</b>	<b>310</b>	<b>337</b>	<b>382</b>	<b>341</b>	<b>333</b>	<b>304</b>	<b>4448</b>
PASSAIC	Passaic Central	CPS	134	102	134	135	158	115	132	90	143	169	160	155	144	1771
		CWS	33	21	26	15	26	12	9	11	20	22	18	14	15	242
		<b>Total</b>	<b>167</b>	<b>123</b>	<b>160</b>	<b>150</b>	<b>184</b>	<b>127</b>	<b>141</b>	<b>101</b>	<b>163</b>	<b>191</b>	<b>178</b>	<b>169</b>	<b>159</b>	<b>2013</b>
	Passaic North	CPS	134	102	124	150	142	153	126	130	135	193	157	152	104	1802
		CWS	27	18	26	26	20	11	18	14	15	18	15	9	11	228
		<b>Total</b>	<b>161</b>	<b>120</b>	<b>150</b>	<b>176</b>	<b>162</b>	<b>164</b>	<b>144</b>	<b>144</b>	<b>150</b>	<b>211</b>	<b>172</b>	<b>161</b>	<b>115</b>	<b>2030</b>
	County Totals	CPS	268	204	258	285	300	268	258	220	278	362	317	307	248	3573
		CWS	60	39	52	41	46	23	27	25	35	40	33	23	26	470
		<b>Total</b>	<b>328</b>	<b>243</b>	<b>310</b>	<b>326</b>	<b>346</b>	<b>291</b>	<b>285</b>	<b>245</b>	<b>313</b>	<b>402</b>	<b>350</b>	<b>330</b>	<b>274</b>	<b>4043</b>
SALEM	Salem	CPS	62	56	72	67	63	59	51	41	66	71	50	49	58	765
		CWS	9	8	11	9	13	5	10	7	9	7	6	8	7	109
		<b>Total</b>	<b>71</b>	<b>64</b>	<b>83</b>	<b>76</b>	<b>76</b>	<b>64</b>	<b>61</b>	<b>48</b>	<b>75</b>	<b>78</b>	<b>56</b>	<b>57</b>	<b>65</b>	<b>874</b>
	County Totals	CPS	62	56	72	67	63	59	51	41	66	71	50	49	58	765
		CWS	9	8	11	9	13	5	10	7	9	7	6	8	7	109
		<b>Total</b>	<b>71</b>	<b>64</b>	<b>83</b>	<b>76</b>	<b>76</b>	<b>64</b>	<b>61</b>	<b>48</b>	<b>75</b>	<b>78</b>	<b>56</b>	<b>57</b>	<b>65</b>	<b>874</b>
SOMERSET	Somerset	CPS	101	104	119	127	125	114	96	85	128	133	125	101	103	1461
		CWS	13	16	11	12	28	16	12	12	3	15	5	10	9	162
		<b>Total</b>	<b>114</b>	<b>120</b>	<b>130</b>	<b>139</b>	<b>153</b>	<b>130</b>	<b>108</b>	<b>97</b>	<b>131</b>	<b>148</b>	<b>130</b>	<b>111</b>	<b>112</b>	<b>1623</b>
	County Totals	CPS	101	104	119	127	125	114	96	85	128	133	125	101	103	1461
		CWS	13	16	11	12	28	16	12	12	3	15	5	10	9	162
		<b>Total</b>	<b>114</b>	<b>120</b>	<b>130</b>	<b>139</b>	<b>153</b>	<b>130</b>	<b>108</b>	<b>97</b>	<b>131</b>	<b>148</b>	<b>130</b>	<b>111</b>	<b>112</b>	<b>1623</b>

Data in this report is preliminary and may differ from any final report. This report is produced to ensure continuous quality improvement throughout DCF.



**Table 5: Monthly Count of CPS Reports and CWS Referrals Assigned to CP&P Local Offices**

County	Local Office	Type of Referral														Total	
			Jan 2021	Feb 2021	Mar 2021	Apr 2021	May 2021	Jun 2021	Jul 2021	Aug 2021	Sep 2021	Oct 2021	Nov 2021	Dec 2021	Jan 2022		
SUSSEX	Sussex	CPS	54	66	93	86	70	64	52	62	82	86	71	67	77	930	
		CWS	9	7	10	9	8	6	10	5	8	13	14	5	7	111	
		<b>Total</b>	<b>63</b>	<b>73</b>	<b>103</b>	<b>95</b>	<b>78</b>	<b>70</b>	<b>62</b>	<b>67</b>	<b>90</b>	<b>99</b>	<b>85</b>	<b>72</b>	<b>84</b>	<b>1041</b>	
	County Totals	CPS	54	66	93	86	70	64	52	62	82	86	71	67	77	930	
		CWS	9	7	10	9	8	6	10	5	8	13	14	5	7	111	
		<b>Total</b>	<b>63</b>	<b>73</b>	<b>103</b>	<b>95</b>	<b>78</b>	<b>70</b>	<b>62</b>	<b>67</b>	<b>90</b>	<b>99</b>	<b>85</b>	<b>72</b>	<b>84</b>	<b>1041</b>	
UNION	Union Central	CPS	63	57	68	67	88	70	74	65	72	87	64	82	56	913	
		CWS	15	10	25	14	17	5	10	9	8	3	11	5	10	142	
		<b>Total</b>	<b>78</b>	<b>67</b>	<b>93</b>	<b>81</b>	<b>105</b>	<b>75</b>	<b>84</b>	<b>74</b>	<b>80</b>	<b>90</b>	<b>75</b>	<b>87</b>	<b>66</b>	<b>1055</b>	
	Union East	CPS	72	73	66	61	88	95	72	68	66	93	88	87	108	1037	
		CWS	19	5	15	15	18	9	2	8	11	9	9	15	8	143	
		<b>Total</b>	<b>91</b>	<b>78</b>	<b>81</b>	<b>76</b>	<b>106</b>	<b>104</b>	<b>74</b>	<b>76</b>	<b>77</b>	<b>102</b>	<b>97</b>	<b>102</b>	<b>116</b>	<b>1180</b>	
	Union West	CPS	69	65	79	80	101	79	70	70	89	93	95	79	67	1036	
		CWS	18	8	18	23	9	8	12	6	10	8	10	9	8	147	
		<b>Total</b>	<b>87</b>	<b>73</b>	<b>97</b>	<b>103</b>	<b>110</b>	<b>87</b>	<b>82</b>	<b>76</b>	<b>99</b>	<b>101</b>	<b>105</b>	<b>88</b>	<b>75</b>	<b>1183</b>	
	County Totals	CPS	204	195	213	208	277	244	216	203	227	273	247	248	231	2986	
		CWS	52	23	58	52	44	22	24	23	29	20	30	29	26	432	
		<b>Total</b>	<b>256</b>	<b>218</b>	<b>271</b>	<b>260</b>	<b>321</b>	<b>266</b>	<b>240</b>	<b>226</b>	<b>256</b>	<b>293</b>	<b>277</b>	<b>277</b>	<b>257</b>	<b>3418</b>	
WARREN	Warren	CPS	84	57	83	64	87	77	78	51	91	64	86	62	77	961	
		CWS	9	13	19	9	17	9	9	4	8	4	7	5	9	122	
		<b>Total</b>	<b>93</b>	<b>70</b>	<b>102</b>	<b>73</b>	<b>104</b>	<b>86</b>	<b>87</b>	<b>55</b>	<b>99</b>	<b>68</b>	<b>93</b>	<b>67</b>	<b>86</b>	<b>1083</b>	
	County Totals	CPS	84	57	83	64	87	77	78	51	91	64	86	62	77	961	
		CWS	9	13	19	9	17	9	9	4	8	4	7	5	9	122	
		<b>Total</b>	<b>93</b>	<b>70</b>	<b>102</b>	<b>73</b>	<b>104</b>	<b>86</b>	<b>87</b>	<b>55</b>	<b>99</b>	<b>68</b>	<b>93</b>	<b>67</b>	<b>86</b>	<b>1083</b>	
<b>County CPS Referral Total</b>		<b>CPS</b>	<b>3,871</b>	<b>3,645</b>	<b>4,475</b>	<b>4,248</b>	<b>4,686</b>	<b>4,264</b>	<b>3,754</b>	<b>3,712</b>	<b>4,360</b>	<b>5,001</b>	<b>4,508</b>	<b>4,417</b>	<b>4,107</b>	<b>55,048</b>	
<b>County CWS Referral Total</b>		<b>CWS</b>	<b>762</b>	<b>619</b>	<b>782</b>	<b>711</b>	<b>690</b>	<b>540</b>	<b>527</b>	<b>437</b>	<b>524</b>	<b>573</b>	<b>506</b>	<b>520</b>	<b>484</b>	<b>7,675</b>	
<b>County Referral Total</b>		<b>Total</b>	<b>4,633</b>	<b>4,264</b>	<b>5,257</b>	<b>4,959</b>	<b>5,376</b>	<b>4,804</b>	<b>4,281</b>	<b>4,149</b>	<b>4,884</b>	<b>5,574</b>	<b>5,014</b>	<b>4,937</b>	<b>4,591</b>	<b>62,723</b>	
Central Region IAIU		CPS	28	20	30	20	41	22	35	25	42	53	31	37	32	416	
		CWS	0	0	0	0	0	0	0	0	0	0	0	0	0	0	0
		<b>Total</b>	<b>28</b>	<b>20</b>	<b>30</b>	<b>20</b>	<b>41</b>	<b>22</b>	<b>35</b>	<b>25</b>	<b>42</b>	<b>53</b>	<b>31</b>	<b>37</b>	<b>32</b>	<b>416</b>	
Metro Region IAIU		CPS	12	11	22	14	18	17	11	22	36	28	26	21	27	265	
		CWS	0	0	0	0	0	0	0	0	0	1	0	0	0	1	3
		<b>Total</b>	<b>12</b>	<b>11</b>	<b>22</b>	<b>14</b>	<b>18</b>	<b>17</b>	<b>11</b>	<b>22</b>	<b>36</b>	<b>29</b>	<b>26</b>	<b>21</b>	<b>27</b>	<b>266</b>	
Northern Region IAIU		CPS	18	14	22	20	28	18	23	19	27	39	44	41	28	341	
		CWS	0	0	1	0	0	0	0	0	0	0	0	1	0	2	3
		<b>Total</b>	<b>18</b>	<b>14</b>	<b>23</b>	<b>20</b>	<b>28</b>	<b>18</b>	<b>23</b>	<b>19</b>	<b>27</b>	<b>39</b>	<b>44</b>	<b>42</b>	<b>28</b>	<b>343</b>	
Southern Region IAIU		CPS	33	34	46	35	48	33	42	42	51	41	33	42	35	515	
		CWS	0	0	0	0	0	0	0	0	0	0	0	0	0	0	0
		<b>Total</b>	<b>33</b>	<b>34</b>	<b>46</b>	<b>35</b>	<b>48</b>	<b>33</b>	<b>42</b>	<b>42</b>	<b>51</b>	<b>41</b>	<b>33</b>	<b>42</b>	<b>35</b>	<b>515</b>	
<b>IAIU CPS Subtotal</b>		<b>CPS</b>	<b>91</b>	<b>79</b>	<b>120</b>	<b>89</b>	<b>135</b>	<b>90</b>	<b>111</b>	<b>108</b>	<b>156</b>	<b>161</b>	<b>134</b>	<b>141</b>	<b>122</b>	<b>1,537</b>	
<b>IAIU CWS Subtotal</b>		<b>CWS</b>	<b>0</b>	<b>0</b>	<b>1</b>	<b>0</b>	<b>0</b>	<b>0</b>	<b>0</b>	<b>0</b>	<b>0</b>	<b>1</b>	<b>0</b>	<b>1</b>	<b>0</b>	<b>3</b>	
<b>IAIU Subtotal</b>		<b>Total</b>	<b>91</b>	<b>79</b>	<b>121</b>	<b>89</b>	<b>135</b>	<b>90</b>	<b>111</b>	<b>108</b>	<b>156</b>	<b>162</b>	<b>134</b>	<b>142</b>	<b>122</b>	<b>1,540</b>	
<b>County and IAIU CPS Subtotal</b>		<b>CPS</b>	<b>3,962</b>	<b>3,724</b>	<b>4,595</b>	<b>4,337</b>	<b>4,821</b>	<b>4,354</b>	<b>3,865</b>	<b>3,820</b>	<b>4,516</b>	<b>5,162</b>	<b>4,642</b>	<b>4,558</b>	<b>4,229</b>	<b>56,585</b>	
<b>County and IAIU CWS Subtotal</b>		<b>CWS</b>	<b>762</b>	<b>619</b>	<b>783</b>	<b>711</b>	<b>690</b>	<b>540</b>	<b>527</b>	<b>437</b>	<b>524</b>	<b>574</b>	<b>506</b>	<b>521</b>	<b>484</b>	<b>7,678</b>	
<b>Unable to Determine(1)</b>		<b>Total</b>	<b>85</b>	<b>79</b>	<b>108</b>	<b>98</b>	<b>94</b>	<b>108</b>	<b>89</b>	<b>91</b>	<b>83</b>	<b>107</b>	<b>82</b>	<b>78</b>	<b>84</b>	<b>1,186</b>	
<b>Other Offices</b>		<b>Total</b>	<b>3</b>	<b>0</b>	<b>1</b>	<b>2</b>	<b>1</b>	<b>2</b>	<b>3</b>	<b>0</b>	<b>0</b>	<b>0</b>	<b>1</b>	<b>0</b>	<b>13</b>	<b>13</b>	
<b>Grand Total</b>		<b>Total</b>	<b>4,812</b>	<b>4,422</b>	<b>5,487</b>	<b>5,148</b>	<b>5,606</b>	<b>5,004</b>	<b>4,484</b>	<b>4,348</b>	<b>5,123</b>	<b>5,843</b>	<b>5,230</b>	<b>5,158</b>	<b>4,797</b>	<b>65,462</b>	

(1) CPS Reports or CWS Referrals not assigned to an office through the Assignment Designee, but were assigned to an office for an assessment or investigation.