



Child Protection and Permanency

Monthly Screening and Investigation Report October 2021

Christine Norbut Beyer, MSW
Commissioner



Table of Contents

Table 1: NJ State Central Registry Activity: Monthly Child Abuse and Neglect Hotline Calls, Intakes and Assignments to Child Protection & Permanency (CP&P) Offices

Chart 1: CP&P Annual Trends in Child Protection Services (CPS) Reports and Child Welfare Services (CWS) Referrals

Table 2: Assignments to CP&P Offices: CPS Reports and CWS Referrals

Table 3: Source of CPS Reports and CWS Referrals

Table 4: Monthly Count of CPS Reports and CWS Referrals Assigned to Counties

Table 5: Monthly Count of CPS Reports and CWS Referrals Assigned to CP&P Local Offices

Table 1: NJ State Central Registry Activity: Monthly Child Abuse and Neglect Hotline Calls, Intakes and Assignments to CP&P Offices^{1,2,7}

2020-2021	Hotline Call Activity				Intakes Recorded in NJ SPIRIT ^{6,8}														Assignments to CP&P Offices				
	Total Calls to SCR ³	Abandon Calls ⁴	Average Time to Answer (seconds)	Resulting NJS Intakes ⁵	CPS Reports		CWS Referrals		No Action Required (NAR)		Related Information (RI)		Information & Referral (I&R)		Information Only (IO)		Unusual Incident (UIRS)		CPS Reports		CWS Referrals		Total
					n	%	n	%	n	%	n	%	n	%	n	%	n	%	n	%	n	%	
October 2020	13,118	1,258	183	13,320	4,257	32.0%	867	6.5%	191	1.4%	3,220	24.2%	2,709	20.3%	2,076	15.6%	0	0.0%	4,257	83.1%	868	16.9%	5,125
November 2020	10,789	1,462	183	10,930	3,564	32.6%	670	6.1%	141	1.3%	2,608	23.9%	2,159	19.8%	1,788	16.4%	0	0.0%	3,564	84.2%	670	15.8%	4,234
December 2020	9,618	1,385	238	10,567	3,517	33.3%	681	6.4%	149	1.4%	2,345	22.2%	2,123	20.1%	1,752	16.6%	0	0.0%	3,517	83.8%	681	16.2%	4,198
January 2021	11,339	1,452	199	12,032	4,018	33.4%	794	6.6%	190	1.6%	2,818	23.4%	2,324	19.3%	1,888	15.7%	0	0.0%	4,018	83.5%	794	16.5%	4,812
February 2021	11,060	966	186	11,302	3,767	33.3%	655	5.8%	167	1.5%	2,499	22.1%	2,394	21.2%	1,820	16.1%	0	0.0%	3,767	85.2%	655	14.8%	4,422
March 2021	12,731	666	75	13,372	4,657	34.8%	829	6.2%	261	2.0%	2,868	21.4%	2,796	20.9%	1,961	14.7%	0	0.0%	4,657	84.9%	830	15.1%	5,487
April 2021	11,772	680	94	12,287	4,398	35.8%	750	6.1%	187	1.5%	2,796	22.8%	2,287	18.6%	1,869	15.2%	0	0.0%	4,398	85.4%	750	14.6%	5,148
May 2021	12,496	686	87	13,132	4,870	37.1%	734	5.6%	219	1.7%	3,025	23.0%	2,523	19.2%	1,761	13.4%	0	0.0%	4,870	86.9%	736	13.1%	5,606
June 2021	11,893	895	117	12,269	4,412	36.0%	591	4.8%	188	1.5%	2,943	24.0%	2,430	19.8%	1,705	13.9%	0	0.0%	4,412	88.2%	592	11.8%	5,004
July 2021	10,578	638	127	10,996	3,914	35.6%	569	5.2%	142	1.3%	2,642	24.0%	2,079	18.9%	1,650	15.0%	0	0.0%	3,914	87.3%	570	12.7%	4,484
August 2021	10,365	508	78	10,897	3,866	35.5%	482	4.4%	172	1.6%	2,371	21.8%	2,301	21.1%	1,704	15.6%	1	0.0%	3,866	88.9%	482	11.1%	4,348
September 2021	12,259	591	91	12,780	4,559	35.7%	564	4.4%	148	1.2%	2,794	21.9%	2,894	22.6%	1,819	14.2%	2	0.0%	4,559	89.0%	564	11.0%	5,123
October 2021	14,262	1,183	152	14,500	5,213	36.0%	631	4.4%	200	1.4%	3,287	22.7%	3,277	22.6%	1,890	13.0%	2	0.0%	5,213	89.2%	630	10.8%	5,843
	11,714	952	139	12,183	4,232	34.7%	678	5.6%	181	1.5%	2,786	22.9%	2,484	20.4%	1,822	15.0%	0	0.0%	4,232	86.2%	679	13.8%	4,910
Overall Total	152,280	12,370		158,384	55,012		8,817		2,355		36,216		32,296		23,683		5		55,012	86.2%	8,822	13.8%	63,834

¹Comes from three distinct sources: (1) the Automatic Call Distribution (ACD) phone system; which keeps a count of the number of calls and call routing; (2) Monthly NJSpirit Intakes; which record decision making on calls received by hotline screeners, and (3) NJSpirit extracts of assigned CWS Referrals and CPS Reports.

²The number of Intakes, CPS Reports, and CWS Referrals are based on an extract from NJSpirit.

Data extracted by the Office of Research, Evaluation, and Reporting on **November 08, 2021** includes all Intakes, CPS Reports, and CWS Referrals received from **October 01, 2021** through **October 31, 2021**.

³The number calls received through the ACD System that were directed to a screener from any call-in phone number.

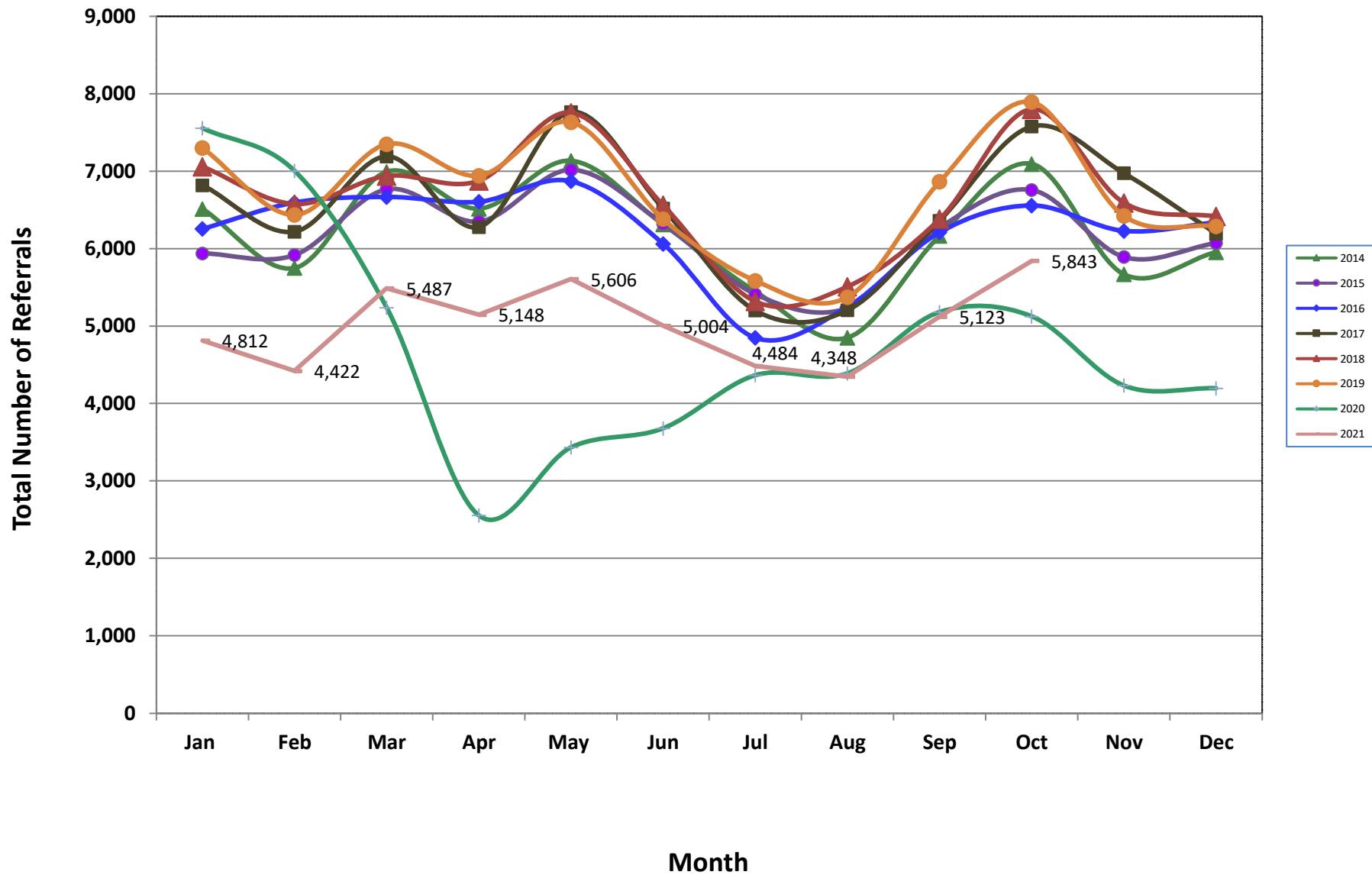
⁴The number of calls received through the ACD System that are abandoned either while waiting in queue or while ringing.

⁵The number of Intakes entered in NJSpirit from the number of calls received.

⁶The number of Intakes recorded in NJSpirit, by type of Intake. There is not a one-to-one relationship between an ACD call and an Intake; multiple calls to State Central Registry (SCR) may result in a single Intake, or one call may result in multiple Intakes.

⁷Intake: The process of documenting: a report of alleged abuse or neglect of a child (CPS); a request for services on behalf of a child, or a referral of a child for services (CWS); a call in which the caller provides additional or clarifying information about a current service case or active investigation (RI); informing a caller of, or referring a caller to, services available from other private or public sources (I&R); a call that requires no action by CP&P (NAR); or a response to a simple inquiry (IO).

CP&P Annual Trends in CPS Reports and CWS Referrals



Data in this report is preliminary and may differ from any final report. This report is produced to ensure continuous quality improvement throughout DCF.

Table 2: Assignments to CP&P Offices: CPS Reports and CWS Referrals¹

Intake Date ³		CPS Reports ²	CWS Referrals ²	Total Assignments ²
2016	Jan 2016	4,686	1,571	6,257
	Feb 2016	4,974	1,622	6,596
	Mar 2016	5,000	1,669	6,669
	Apr 2016	5,065	1,542	6,607
	May 2016	5,238	1,633	6,871
	Jun 2016	4,602	1,461	6,063
	Jul 2016	3,663	1,187	4,850
	Aug 2016	3,941	1,307	5,248
	Sep 2016	4,654	1,559	6,213
	Oct 2016	4,935	1,622	6,557
	Nov 2016	4,677	1,552	6,229
	Dec 2016	4,762	1,580	6,342
	Total	56,197	18,305	74,502
2017	Jan 2017	5,111	1,708	6,819
	Feb 2017	4,716	1,504	6,220
	Mar 2017	5,349	1,843	7,192
	Apr 2017	4,790	1,490	6,280
	May 2017	5,847	1,919	7,766
	Jun 2017	4,853	1,665	6,518
	Jul 2017	3,814	1,389	5,203
	Aug 2017	3,866	1,340	5,206
	Sep 2017	4,719	1,643	6,362
	Oct 2017	5,613	1,966	7,579
	Nov 2017	5,223	1,753	6,976
	Dec 2017	4,601	1,594	6,195
	Total	58,502	19,814	78,316
2018	Jan 2018	5,276	1,784	7,060
	Feb 2018	4,933	1,644	6,577
	Mar 2018	5,212	1,727	6,939
	Apr 2018	5,275	1,601	6,876
	May 2018	5,920	1,836	7,756
	Jun 2018	4,948	1,615	6,563
	Jul 2018	4,011	1,308	5,319
	Aug 2018	4,102	1,408	5,510
	Sep 2018	4,748	1,634	6,382
	Oct 2018	5,790	2,011	7,801
	Nov 2018	4,973	1,620	6,593
	Dec 2018	4,891	1,527	6,418
	Total	60,079	19,715	79,794

Table 2: Assignments to CP&P Offices: CPS Reports and CWS Referrals¹

Intake Date ³		CPS Reports ²	CWS Referrals ²	Total Assignments ²
2019	Jan 2019	5,443	1,858	7,301
	Feb 2019	4,811	1,628	6,439
	Mar 2019	5,677	1,824	7,501
	Apr 2019	5,313	1,630	6,943
	May 2019	5,853	1,781	7,634
	Jun 2019	4,874	1,509	6,383
	Jul 2019	4,277	1,309	5,586
	Aug 2019	4,068	1,306	5,374
	Sep 2019	5,315	1,551	6,866
	Oct 2019	5,968	1,926	7,894
	Nov 2019	4,991	1,432	6,423
	Dec 2019	4,855	1,434	6,289
	Total	61,445	19,188	80,633
2020	Jan 2020	5,715	1,842	7,557
	Feb 2020	5,380	1,624	7,004
	Mar 2020	4,172	1,065	5,237
	Apr 2020	2,149	407	2,556
	May 2020	2,897	537	3,434
	Jun 2020	3,045	636	3,681
	Jul 2020	3,628	738	4,366
	Aug 2020	3,569	822	4,391
	Sep 2020	4,153	1,030	5,183
	Oct 2020	4,257	868	5,125
	Nov 2020	3,564	670	4,234
	Dec 2020	3,517	681	4,198
	Total	46,046	10,920	56,966
2021	Jan 2021	4,018	794	4,812
	Feb 2021	3,767	655	4,422
	Mar 2021	4,657	830	5,487
	Apr 2021	4,398	750	5,148
	May 2021	4,870	736	5,606
	Jun 2021	4,412	592	5,004
	Jul 2021	3,914	570	4,484
	Aug 2021	3,866	482	4,348
	Sep 2021	4,559	564	5,123
	Oct 2021	5,213	630	5,843
	Total	43,674	6,603	50,277
Grand Total		325,943	94,545	420,488

Table 3: Source of CPS Reports and CWS Referrals

CPS Reports and CWS Referrals	Source	Oct 2020	Nov 2020	Dec 2020	Jan 2021	Feb 2021	Mar 2021	Apr 2021	May 2021	Jun 2021	Jul 2021	Aug 2021	Sep 2021	Oct 2021		13 Month Total		
	School Staff	809	515	523	709	664	989	759	913	531	145	83	863	863	1,450	25%	8,953	14%
	Healthcare Provider	869	817	760	835	815	930	897	917	819	839	789	824	824	780	13%	10,891	17%
	Law Enforcement	1,303	1,147	1,092	1,226	1,122	1,311	1,329	1,542	1,466	1,442	1,384	1,397	1,397	1,446	25%	17,207	27%
	Government Agency	278	180	233	280	261	323	309	272	221	248	265	266	266	222	4%	3,358	5%
	Parent	351	330	355	374	302	392	409	387	396	392	404	347	347	393	7%	4,832	8%
	Relative/Friend/Neighbor	337	294	286	336	284	332	338	355	382	362	363	372	372	350	6%	4,391	7%
	Anonymous	525	386	400	442	415	499	450	487	476	387	401	444	444	506	9%	5,818	9%
	CP&P	98	72	82	62	61	96	89	89	76	58	45	60	60	73	1%	961	2%
	Court/Legal	86	77	81	99	91	127	102	111	119	125	88	120	120	126	2%	1,352	2%
	Community Group/Individual	163	141	132	168	152	182	159	175	176	149	159	137	137	175	3%	2,068	3%
	Facility Staff (incl Correctional Facility)	68	53	60	56	48	52	64	67	66	65	69	51	51	55	1%	774	1%
	Child (Self)	29	34	31	29	27	35	37	33	22	26	49	41	41	42	1%	435	1%
	Other	198	177	150	187	171	204	197	245	245	226	236	189	189	214	4%	2,639	4%
Daycare/Babysitter	11	11	13	9	9	15	9	13	9	20	13	12	12	11	0%	155	0%	
Total	5,125	4,234	4,198	4,812	4,422	5,487	5,148	5,606	5,004	4,484	4,348	5,123	5,123	5,843		63,834		

Table 4: Monthly Count of CPS Reports and CWS Referrals Assigned to Counties

County														Average Number of Assignments Last 13 Months	Sep 21 to Oct 21 Numerical Difference
	Oct 2020	Nov 2020	Dec 2020	Jan 2021	Feb 2021	Mar 2021	Apr 2021	May 2021	Jun 2021	Jul 2021	Aug 2021	Sep 2021	Oct 2021		
Atlantic	256	181	199	205	185	237	224	265	241	197	182	215	255	219	40
Bergen	319	255	245	276	289	323	314	343	273	255	249	325	350	294	25
Burlington	278	224	224	230	232	297	269	307	286	238	223	263	280	258	17
Camden	443	337	356	420	432	497	459	456	403	381	371	466	511	426	45
Cape May	61	72	61	70	73	87	68	81	56	81	72	70	70	71	0
Cumberland	167	147	147	141	154	203	190	173	165	153	140	180	196	166	16
Essex	500	419	416	458	452	530	441	520	501	457	442	484	565	476	81
Gloucester	214	186	202	197	176	239	237	219	228	205	207	208	221	211	13
Hudson	325	234	296	301	243	305	313	341	319	255	287	303	371	299	68
Hunterdon	38	36	29	46	42	41	47	47	34	37	33	39	52	40	13
Mercer	207	193	194	201	184	221	213	264	230	200	185	222	245	212	23
Middlesex	356	286	303	356	295	382	364	428	349	299	317	385	472	353	87
Monmouth	311	254	237	304	289	304	294	296	262	249	256	250	331	280	81
Morris	198	164	148	182	139	198	168	162	190	141	137	173	185	168	12
Ocean	319	294	290	321	291	394	389	396	360	290	310	337	382	336	45
Passaic	312	255	225	328	243	310	326	346	291	285	245	313	402	299	89
Salem	68	67	53	71	64	83	76	76	64	61	48	75	78	68	3
Somerset	130	123	106	114	120	130	139	153	130	108	97	131	148	125	17
Sussex	101	74	46	63	73	103	95	78	70	62	67	90	99	79	9
Union	253	189	210	256	218	271	260	321	266	240	226	256	293	251	37
Warren	98	67	66	93	70	102	73	104	86	87	55	99	68	82	-31
County Subtotals	4,954	4,057	4,053	4,633	4,264	5,257	4,959	5,376	4,804	4,281	4,149	4,884	5,574	4,711	690
Central Region IAIU	23	23	13	28	20	30	20	41	22	35	25	42	53	29	11
Metro Region IAIU	14	16	11	12	11	22	14	18	17	11	22	36	29	18	-7
Northern Region IAIU	10	11	8	18	14	23	20	28	18	23	19	27	39	20	12
Southern Region IAIU	28	23	26	33	34	46	35	48	33	42	42	51	41	37	-10
IAIU Subtotals	75	73	58	91	79	121	89	135	90	111	108	156	162	104	6
¹ Unable to Determine	93	103	85	85	79	108	98	94	108	89	91	83	107	94	24
Other Offices	3	1	2	3	0	1	2	1	2	3	0	0	0	1	0
Grand Total	5,125	4,234	4,198	4,812	4,422	5,487	5,148	5,606	5,004	4,484	4,348	5,123	5,843	4,910	720

¹CPS Reports or CWS Referrals not assigned to an office through the Assignment Designee, but were assigned to an office for an assessment or investigation.



Table 5: Monthly Count of CPS Reports and CWS Referrals Assigned to CP&P Local Offices

County	Local Office	Type of Referral														Total
			Oct 2020	Nov 2020	Dec 2020	Jan 2021	Feb 2021	Mar 2021	Apr 2021	May 2021	Jun 2021	Jul 2021	Aug 2021	Sep 2021	Oct 2021	
ATLANTIC	Atlantic East	CPS	110	76	87	95	98	105	105	128	130	95	97	106	126	1,358
		CWS	17	13	16	17	14	15	21	22	14	12	17	10	13	201
		Total	127	89	103	112	112	120	126	150	144	107	114	116	139	1,559
	Atlantic West	CPS	107	79	82	76	63	100	87	94	83	83	60	82	104	1,100
		CWS	22	13	14	17	10	17	11	21	14	7	8	17	12	183
		Total	129	92	96	93	73	117	98	115	97	90	68	99	116	1,283
	County Totals	CPS	217	155	169	171	161	205	192	222	213	178	157	188	230	2,458
		CWS	39	26	30	34	24	32	32	43	28	19	25	27	25	384
		Total	256	181	199	205	185	237	224	265	241	197	182	215	255	2,842
BERGEN	Bergen Central	CPS	105	70	80	101	96	123	111	122	89	85	85	132	139	1,338
		CWS	33	19	15	23	25	18	17	12	15	10	6	13	19	225
		Total	138	89	95	124	121	141	128	134	104	95	91	145	158	1,563
	Bergen South	CPS	156	138	119	127	140	157	161	191	157	139	147	157	177	1,966
		CWS	25	28	31	25	28	25	25	18	12	21	11	23	15	287
		Total	181	166	150	152	168	182	186	209	169	160	158	180	192	2,253
	County Totals	CPS	261	208	199	228	236	280	272	313	246	224	232	289	316	3,304
		CWS	58	47	46	48	53	43	42	30	27	31	17	36	34	512
		Total	319	255	245	276	289	323	314	343	273	255	249	325	350	3,816
BURLINGTON	Burlington East	CPS	126	95	104	92	111	133	121	128	129	91	91	103	137	1,461
		CWS	19	16	13	21	19	18	27	21	21	20	10	17	11	233
		Total	145	111	117	113	130	151	148	149	150	111	101	120	148	1,694
	Burlington West	CPS	108	93	87	89	87	122	98	135	117	105	100	125	115	1,381
		CWS	25	20	20	28	15	24	23	23	19	22	22	18	17	276
		Total	133	113	107	117	102	146	121	158	136	127	122	143	132	1,657
	County Totals	CPS	234	188	191	181	198	255	219	263	246	196	191	228	252	2,842
		CWS	44	36	33	49	34	42	50	44	40	42	32	35	28	509
		Total	278	224	224	230	232	297	269	307	286	238	223	263	280	3,351
CAMDEN	Camden Central	CPS	99	79	79	100	85	115	91	105	88	86	88	105	117	1,237
		CWS	18	14	17	20	17	22	12	17	13	12	16	15	17	210
		Total	117	93	96	120	102	137	103	122	101	98	104	120	134	1,447
	Camden East	CPS	101	64	79	93	88	118	112	104	84	81	84	101	128	1,237
		CWS	13	13	15	13	20	16	18	10	13	13	16	10	16	186
		Total	114	77	94	106	108	134	130	114	97	94	100	111	144	1,423
	Camden North	CPS	86	62	59	81	107	85	93	97	92	79	67	97	102	1,107
		CWS	19	19	12	17	15	13	15	17	11	9	13	17	15	192
		Total	105	81	71	98	122	98	108	114	103	88	80	114	117	1,299
	Camden South	CPS	96	75	78	77	93	108	102	91	92	88	75	108	96	1,179
		CWS	11	11	17	19	7	20	16	15	10	13	12	13	20	184
		Total	107	86	95	96	100	128	118	106	102	101	87	121	116	1,363
	County Totals	CPS	382	280	295	351	373	426	398	397	356	334	314	411	443	4,760
		CWS	61	57	61	69	59	71	61	59	47	47	57	55	68	772
		Total	443	337	356	420	432	497	459	456	403	381	371	466	511	5,532
CAPE MAY	Cape May	CPS	52	60	52	59	59	77	60	70	51	63	64	61	61	789
		CWS	9	12	9	11	14	10	8	11	5	18	8	9	9	133
		Total	61	72	61	70	73	87	68	81	56	81	72	70	70	922
	County Totals	CPS	52	60	52	59	59	77	60	70	51	63	64	61	61	789
		Total	61	72	61	70	73	87	68	81	56	81	72	70	70	922
CUMBERLAND	Cumberland East	CPS	61	46	41	45	41	75	55	54	66	68	58	77	75	762
		CWS	12	8	5	17	7	11	11	11	11	4	4	8	11	120
		Total	73	54	46	62	48	86	66	65	77	72	62	85	86	882
	Cumberland West	CPS	77	76	78	68	91	101	110	91	74	73	71	89	102	1,101
		CWS	17	17	23	11	15	16	14	17	14	8	7	6	8	173
		Total	94	93	101	79	106	117	124	108	88	81	78	95	110	1,274
	County Totals	CPS	138	122	119	113	132	176	165	145	140	141	129	166	177	1,863
Total		167	147	147	141	154	203	190	173	165	153	140	180	196	2,156	

Data in this report is preliminary and may differ from any final report. This report is produced to ensure continuous quality improvement throughout DCF.



Table 5: Monthly Count of CPS Reports and CWS Referrals Assigned to CP&P Local Offices

County	Local Office	Type of Referral														Total
			Oct 2020	Nov 2020	Dec 2020	Jan 2021	Feb 2021	Mar 2021	Apr 2021	May 2021	Jun 2021	Jul 2021	Aug 2021	Sep 2021	Oct 2021	
ESSEX	Essex Central	CPS	76	59	66	81	80	68	63	62	63	77	59	75	88	917
		CWS	15	14	10	24	13	11	14	9	9	15	12	6	14	166
		Total	91	73	76	105	93	79	77	71	72	92	71	81	102	1,083
	Essex North	CPS	50	48	44	38	58	81	66	79	71	68	49	50	78	780
		CWS	16	3	13	8	12	20	15	15	7	7	1	3	9	129
		Total	66	51	57	46	70	101	81	94	78	75	50	53	87	909
	Essex South	CPS	48	42	38	57	71	70	64	81	86	61	74	76	104	872
		CWS	12	8	10	14	13	23	13	12	13	9	9	13	14	163
		Total	60	50	48	71	84	93	77	93	99	70	83	89	118	1035
	Newark Center City	CPS	76	75	73	61	70	63	77	74	67	67	64	75	86	928
		CWS	10	12	8	10	5	15	9	5	14	3	11	12	6	120
		Total	86	87	81	71	75	78	86	79	81	70	75	87	92	1048
	Newark Northeast	CPS	72	47	50	62	54	66	54	83	70	61	61	71	75	826
		CWS	22	13	14	13	9	13	11	10	11	18	7	9	14	164
Total		94	60	64	75	63	79	65	93	81	79	68	80	89	990	
Newark South	CPS	84	83	76	74	56	82	45	83	86	58	81	83	72	963	
	CWS	19	15	14	16	11	18	10	7	4	13	14	11	5	157	
	Total	103	98	90	90	67	100	55	90	90	71	95	94	77	1120	
County Totals	CPS	406	354	347	373	389	430	369	462	443	392	388	430	503	5286	
	CWS	94	65	69	85	63	100	72	58	58	65	54	54	62	899	
	Total	500	419	416	458	452	530	441	520	501	457	442	484	565	6185	
GLOUCESTER	Gloucester East	CPS	73	79	83	65	62	93	91	94	85	85	76	80	1063	
		CWS	14	11	6	18	13	19	17	16	13	15	8	19	13	182
		Total	87	90	89	83	75	112	108	110	98	100	84	99	110	1245
	Gloucester West	CPS	108	82	95	98	89	116	114	96	109	90	113	97	93	1300
		CWS	19	14	18	16	12	11	15	13	21	15	10	12	18	194
		Total	127	96	113	114	101	127	129	109	130	105	123	109	111	1494
	County Totals	CPS	181	161	178	163	151	209	205	190	194	175	189	177	190	2363
		CWS	33	25	24	34	25	30	32	29	34	30	18	31	31	376
Total		214	186	202	197	176	239	237	219	228	205	207	208	221	2739	
HUDSON	Hudson Central	CPS	90	71	98	84	68	98	78	96	78	63	104	78	1117	
		CWS	32	15	18	25	6	32	16	16	20	11	8	15	13	227
		Total	122	86	116	109	74	130	94	112	98	74	112	93	124	1344
	Hudson North	CPS	45	45	47	58	55	55	59	72	57	60	60	59	68	740
		CWS	14	9	10	13	15	11	14	14	7	11	12	11	9	150
		Total	59	54	57	71	70	66	73	86	64	71	72	70	77	890
	Hudson South	CPS	48	21	29	35	25	34	50	50	74	37	41	51	54	549
		CWS	6	12	8	10	7	9	14	12	8	7	3	9	12	117
		Total	54	33	37	45	32	43	64	62	82	44	44	60	66	666
	Hudson West	CPS	65	53	69	65	55	58	69	68	65	61	52	72	93	845
		CWS	25	8	17	11	12	8	13	13	10	5	7	8	11	148
		Total	90	61	86	76	67	66	82	81	75	66	59	80	104	993
	County Totals	CPS	248	190	243	242	203	245	256	286	274	221	257	260	326	3251
		CWS	77	44	53	59	40	60	57	55	45	34	30	43	45	642
Total		325	234	296	301	243	305	313	341	319	255	287	303	371	3893	
HUNTERDON	Hunterdon	CPS	31	28	23	38	38	34	38	38	29	35	32	35	448	
		CWS	7	8	6	8	4	7	9	9	5	2	1	4	3	73
		Total	38	36	29	46	42	41	47	47	34	37	33	39	52	521
	County Totals	CPS	31	28	23	38	38	34	38	38	29	35	32	35	49	448
		CWS	7	8	6	8	4	7	9	9	5	2	1	4	3	73
Total	38	36	29	46	42	41	47	47	47	34	37	33	39	52	521	
MERCER	Mercer North	CPS	78	83	86	91	81	93	108	128	113	92	90	103	1231	
		CWS	20	21	16	13	11	9	8	11	17	20	12	13	18	189
		Total	98	104	102	104	92	102	116	139	130	112	102	116	103	1420
	Mercer South	CPS	94	75	74	71	72	99	81	109	88	74	76	91	128	1132
		CWS	15	14	18	26	20	20	16	16	12	14	7	15	14	207
		Total	109	89	92	97	92	119	97	125	100	88	83	106	142	1339
	County Totals	CPS	172	158	160	162	153	192	189	237	201	166	166	194	213	2363
CWS		35	35	34	39	31	29	24	27	29	34	19	28	32	396	
Total		207	193	194	201	184	221	213	264	230	200	185	222	245	2759	

Data in this report is preliminary and may differ from any final report. This report is produced to ensure continuous quality improvement throughout DCF.



Table 5: Monthly Count of CPS Reports and CWS Referrals Assigned to CP&P Local Offices

County	Local Office	Type of Referral														Total
			Oct 2020	Nov 2020	Dec 2020	Jan 2021	Feb 2021	Mar 2021	Apr 2021	May 2021	Jun 2021	Jul 2021	Aug 2021	Sep 2021	Oct 2021	
MIDDLESEX	Middlesex Central	CPS	87	65	71	104	73	98	110	99	103	81	71	91	118	1171
		CWS	18	11	19	14	17	13	20	11	15	10	7	12	17	184
		Total	105	76	90	118	90	111	130	110	118	91	78	103	135	1355
	Middlesex Coastal	CPS	120	91	89	95	84	121	96	131	102	93	109	132	149	1412
		CWS	15	13	11	18	13	21	16	20	11	9	14	9	12	182
		Total	135	104	100	113	97	142	112	151	113	102	123	141	161	1594
	Middlesex West	CPS	96	90	93	106	91	107	104	142	104	95	106	127	162	1423
		CWS	20	16	20	19	17	22	18	25	14	11	10	14	14	220
		Total	116	106	113	125	108	129	122	167	118	106	116	141	176	1643
	County Totals	CPS	303	246	253	305	248	326	310	372	309	269	286	350	429	4006
		CWS	53	40	50	51	47	56	54	56	40	30	31	35	43	586
		Total	356	286	303	356	295	382	364	428	349	299	317	385	472	4592
MONMOUTH	Monmouth North	CPS	149	127	102	139	149	154	135	146	124	121	125	123	186	1780
		CWS	23	15	20	24	21	22	15	20	11	10	16	11	14	222
		Total	172	142	122	163	170	176	150	166	135	131	141	134	200	2002
	Monmouth South	CPS	116	91	94	124	102	114	131	120	116	107	109	109	120	1453
		CWS	23	21	21	17	17	14	13	10	11	11	6	7	11	182
		Total	139	112	115	141	119	128	144	130	127	118	115	116	131	1635
	County Totals	CPS	265	218	196	263	251	268	266	266	240	228	234	232	306	3233
		CWS	46	36	41	41	38	36	28	30	22	21	22	18	25	404
		Total	311	254	237	304	289	304	294	296	262	249	256	250	331	3637
	MORRIS	Morris East	CPS	89	68	64	74	58	82	62	75	89	53	70	67	74
CWS			9	8	10	8	9	14	14	11	7	7	4	8	6	115
Total			98	76	74	82	67	96	76	86	96	60	74	75	80	1040
Morris West		CPS	80	75	66	90	65	89	78	70	86	76	57	89	95	1016
		CWS	20	13	8	10	7	13	14	6	8	5	6	9	10	129
		Total	100	88	74	100	72	102	92	76	94	81	63	98	105	1145
County Totals		CPS	169	143	130	164	123	171	140	145	175	129	127	156	169	1941
		CWS	29	21	18	18	16	27	28	17	15	12	10	17	16	244
		Total	198	164	148	182	139	198	168	162	190	141	137	173	185	2185
OCEAN		Ocean North	CPS	150	126	129	166	139	167	171	182	173	142	148	162	178
	CWS		22	20	32	17	20	34	31	19	20	18	17	11	15	276
	Total		172	146	161	183	159	201	202	201	193	160	165	173	193	2309
	Ocean South	CPS	130	124	110	119	109	176	161	176	148	110	136	149	170	1818
		CWS	17	24	19	19	23	17	26	19	19	20	9	15	19	246
		Total	147	148	129	138	132	193	187	195	167	130	145	164	189	2064
	County Totals	CPS	280	250	239	285	248	343	332	358	321	252	284	311	348	3851
		CWS	39	44	51	36	43	51	57	38	39	38	26	26	34	522
		Total	319	294	290	321	291	394	389	396	360	290	310	337	382	4373
	PASSAIC	Passaic Central	CPS	134	118	92	134	102	134	135	158	115	132	90	143	169
CWS			28	12	13	33	21	26	15	26	12	9	11	20	22	248
Total			162	130	105	167	123	160	150	184	127	141	101	163	191	1904
Passaic North		CPS	123	107	104	134	102	124	150	142	153	126	130	135	193	1723
		CWS	27	18	16	27	18	26	26	20	11	18	14	15	18	254
		Total	150	125	120	161	120	150	176	162	164	144	144	150	211	1977
County Totals		CPS	257	225	196	268	204	258	285	300	268	258	220	278	362	3379
		CWS	55	30	29	60	39	52	41	46	23	27	25	35	40	502
		Total	312	255	225	328	243	310	326	346	291	285	245	313	402	3881
SALEM		Salem	CPS	56	60	48	62	56	72	67	63	59	51	41	66	71
	CWS		12	7	5	9	8	11	9	13	5	10	7	9	7	112
	Total		68	67	53	71	64	83	76	76	64	61	48	75	78	884
	County Totals	CPS	56	60	48	62	56	72	67	63	59	51	41	66	71	772
		CWS	12	7	5	9	8	11	9	13	5	10	7	9	7	112
		Total	68	67	53	71	64	83	76	76	64	61	48	75	78	884
SOMERSET	Somerset	CPS	116	109	94	101	104	119	127	125	114	96	85	128	133	1451
		CWS	14	14	12	13	16	11	12	28	16	12	12	3	15	178
		Total	130	123	106	114	120	130	139	153	130	108	97	131	148	1629
	County Totals	CPS	116	109	94	101	104	119	127	125	114	96	85	128	133	1451
		Total	130	123	106	114	120	130	139	153	130	108	97	131	148	1629

Data in this report is preliminary and may differ from any final report. This report is produced to ensure continuous quality improvement throughout DCF.



Table 5: Monthly Count of CPS Reports and CWS Referrals Assigned to CP&P Local Offices

County	Local Office	Type of Referral														Total	
			Oct 2020	Nov 2020	Dec 2020	Jan 2021	Feb 2021	Mar 2021	Apr 2021	May 2021	Jun 2021	Jul 2021	Aug 2021	Sep 2021	Oct 2021		
SUSSEX	Sussex	CPS	76	64	41	54	66	93	86	70	64	52	62	82	86	896	
		CWS	25	10	5	9	7	10	9	8	6	10	5	8	13	125	
		Total	101	74	46	63	73	103	95	78	70	62	67	90	99	1021	
	County Totals	CPS	76	64	41	54	66	93	86	70	64	52	62	82	86	896	
		CWS	25	10	5	9	7	10	9	8	6	10	5	8	13	125	
		Total	101	74	46	63	73	103	95	78	70	62	67	90	99	1021	
UNION	Union Central	CPS	72	48	67	63	57	68	67	88	70	74	65	72	87	898	
		CWS	14	11	7	15	10	25	14	17	5	10	9	8	3	148	
		Total	86	59	74	78	67	93	81	105	75	84	74	80	90	1046	
	Union East	CPS	52	51	57	72	73	66	61	88	95	72	68	66	93	914	
		CWS	19	10	10	19	5	15	15	18	9	2	8	11	9	150	
		Total	71	61	67	91	78	81	76	106	104	74	76	77	102	1064	
	Union West	CPS	80	58	58	69	65	79	80	101	79	70	70	89	93	991	
		CWS	16	11	11	18	8	18	23	9	8	12	6	10	8	158	
		Total	96	69	69	87	73	97	103	110	87	82	76	99	101	1149	
	County Totals	CPS	204	157	182	204	195	213	208	277	244	216	203	227	273	2803	
		CWS	49	32	28	52	23	58	52	44	22	24	23	29	20	456	
		Total	253	189	210	256	218	271	260	321	266	240	226	256	293	3259	
WARREN	Warren	CPS	85	59	57	84	57	83	64	87	77	78	51	91	64	937	
		CWS	13	8	9	9	13	19	9	17	9	9	4	8	4	131	
		Total	98	67	66	93	70	102	73	104	86	87	55	99	68	1068	
	County Totals	CPS	85	59	57	84	57	83	64	87	77	78	51	91	64	937	
		CWS	13	8	9	9	13	19	9	17	9	9	4	8	4	131	
		Total	98	67	66	93	70	102	73	104	86	87	55	99	68	1068	
County CPS Referral Total		CPS	4,133	3,435	3,412	3,871	3,645	4,475	4,248	4,686	4,264	3,754	3,712	4,360	5,001	52,996	
County CWS Referral Total		CWS	821	622	641	762	619	782	711	690	540	527	437	524	573	8,249	
County Referral Total		Total	4,954	4,057	4,053	4,633	4,264	5,257	4,959	5,376	4,804	4,281	4,149	4,884	5,574	61,245	
Central Region IAIU		CPS	23	23	13	28	20	30	20	41	22	35	25	42	53	375	
		CWS	0	0	0	0	0	0	0	0	0	0	0	0	0	0	0
		Total	23	23	13	28	20	30	20	41	22	35	25	42	53	375	
Metro Region IAIU		CPS	14	16	11	12	11	22	14	18	17	11	22	36	28	232	
		CWS	0	0	0	0	0	0	0	0	0	0	0	0	1	1	3
		Total	14	16	11	12	11	22	14	18	17	11	22	36	29	233	
Northern Region IAIU		CPS	10	11	8	18	14	22	20	28	18	23	19	27	39	257	
		CWS	0	0	0	0	0	1	0	0	0	0	0	0	0	1	1
		Total	10	11	8	18	14	23	20	28	18	23	19	27	39	258	
Southern Region IAIU		CPS	28	23	26	33	34	46	35	48	33	42	42	51	41	482	
		CWS	0	0	0	0	0	0	0	0	0	0	0	0	0	0	0
		Total	28	23	26	33	34	46	35	48	33	42	42	51	41	482	
IAIU CPS Subtotal		CPS	75	73	58	91	79	120	89	135	90	111	108	156	161	1,346	
IAIU CWS Subtotal		CWS	0	0	0	0	0	1	0	0	0	0	0	1	2	2	
IAIU Subtotal		Total	75	73	58	91	79	121	89	135	90	111	108	156	162	1,348	
County and IAIU CPS Subtotal		CPS	4,208	3,508	3,470	3,962	3,724	4,595	4,337	4,821	4,354	3,865	3,820	4,516	5,162	54,342	
County and IAIU CWS Subtotal		CWS	821	622	641	762	619	783	711	690	540	527	437	524	574	8,251	
Unable to Determine(1)		Total	93	103	85	85	79	108	98	94	108	89	91	83	107	1,223	
Other Offices		Total	3	1	2	3	0	1	2	1	2	3	0	0	0	18	
Grand Total		Total	5,125	4,234	4,198	4,812	4,422	5,487	5,148	5,606	5,004	4,484	4,348	5,123	5,843	63,834	

(1) CPS Reports or CWS Referrals not assigned to an office through the Assignment Designee, but were assigned to an office for an assessment or investigation.