



## **Child Protection and Permanency**

# **Monthly Screening and Investigation Report November 2017**

Allison Blake, Ph.D., L.S.W.  
Commissioner

December 8, 2017



NEW JERSEY DEPARTMENT OF  
CHILDREN AND FAMILIES

## Table of Contents

Table 1: NJ State Central Registry Activity: Monthly Child Abuse and Neglect Hotline Calls, Intakes and Assignments to Child Protection & Permanency (CP&P) Offices

---

Chart 1: CP&P Annual Trends in Child Protection Services (CPS) Reports and Child Welfare Services (CWS) Referrals

---

Table 2: Assignments to CP&P Offices: CPS Reports and CWS Referrals

---

Table 3: Source of CPS Reports and CWS Referrals

---

Table 4: Monthly Count of CPS Reports and CWS Referrals Assigned to Counties

---

Table 5: Monthly Count of CPS Reports and CWS Referrals Assigned to CP&P Local Offices

---

**Table 1: NJ State Central Registry Activity: Monthly Child Abuse and Neglect Hotline Calls, Intakes and Assignments to CP&P Offices<sup>1,2,7</sup>**

2016 - 2017	Hotline Call Activity				Intakes Recorded in NJ SPIRIT <sup>6,8</sup>												Assignments to CP&P Offices				
	Total Calls to SCR <sup>3</sup>	Abandon Calls <sup>4</sup>	Average Time to Answer (seconds)	Resulting NJS Intakes <sup>5</sup>	CPS Reports		CWS Referrals		No Action Required (NAR)		Related Information (RI)		Information & Referral (I&R)		Information Only (IO)		CPS Reports		CWS Referrals		Total
					n	%	n	%	n	%	n	%	n	%	n	%	n	%	n	%	
November 2016	13,310	441	30	14,666	4,677	31.9%	1,551	10.6%	300	2.0%	3,969	27.1%	1,667	11.4%	2,502	17.1%	4,677	75.1%	1,552	24.9%	6,229
December 2016	13,294	424	32	14,626	4,762	32.6%	1,579	10.8%	352	2.4%	3,916	26.8%	1,598	10.9%	2,419	16.5%	4,762	75.1%	1,580	24.9%	6,342
January 2017	14,182	603	45	15,375	5,111	33.2%	1,708	11.1%	321	2.1%	4,221	27.5%	1,670	10.9%	2,344	15.2%	5,111	75.0%	1,708	25.0%	6,819
February 2017	13,261	524	39	14,478	4,716	32.6%	1,503	10.4%	258	1.8%	3,882	26.8%	1,645	11.4%	2,474	17.1%	4,716	75.8%	1,504	24.2%	6,220
March 2017	14,751	538	33	16,228	5,349	33.0%	1,844	11.4%	426	2.6%	4,173	25.7%	1,892	11.7%	2,544	15.7%	5,349	74.4%	1,843	25.6%	7,192
April 2017	13,397	575	36	14,760	4,790	32.5%	1,489	10.1%	420	2.8%	4,037	27.4%	1,607	10.9%	2,417	16.4%	4,790	76.3%	1,490	23.7%	6,280
May 2017	13,397	575	36	17,359	5,847	33.7%	1,919	11.1%	378	2.2%	4,509	26.0%	2,028	11.7%	2,678	15.4%	5,847	75.3%	1,919	24.7%	7,766
June 2017	13,832	617	41	15,143	4,853	32.0%	1,664	11.0%	476	3.1%	4,063	26.8%	1,642	10.8%	2,445	16.1%	4,853	74.5%	1,665	25.5%	6,518
July 2017	12,245	710	57	13,369	3,814	28.5%	1,389	10.4%	336	2.5%	3,877	29.0%	1,436	10.7%	2,517	18.8%	3,814	73.3%	1,389	26.7%	5,203
August 2017	11,672	445	38	12,927	3,866	29.9%	1,338	10.4%	393	3.0%	3,447	26.7%	1,535	11.9%	2,348	18.2%	3,866	74.3%	1,340	25.7%	5,206
September 2017	13,450	570	40	14,750	4,719	32.0%	1,642	11.1%	381	2.6%	3,951	26.8%	1,700	11.5%	2,357	16.0%	4,719	74.2%	1,643	25.8%	6,362
October 2017	15,474	657	45	16,828	5,613	33.4%	1,968	11.7%	305	1.8%	4,353	25.9%	1,883	11.2%	2,706	16.1%	5,613	74.1%	1,966	25.9%	7,579
<b>November 2017</b>	<b>14,446</b>	<b>672</b>	<b>43</b>	<b>15,694</b>	<b>5,223</b>	<b>33.3%</b>	<b>1,750</b>	<b>11.2%</b>	<b>235</b>	<b>1.5%</b>	<b>4,246</b>	<b>27.1%</b>	<b>1,680</b>	<b>10.7%</b>	<b>2,560</b>	<b>16.3%</b>	<b>5,223</b>	<b>74.9%</b>	<b>1,753</b>	<b>25.1%</b>	<b>6,976</b>
	<b>13,593</b>	<b>565</b>	<b>40</b>	<b>15,093</b>	<b>4,872</b>	<b>32.3%</b>	<b>1,642</b>	<b>10.9%</b>	<b>352</b>	<b>2.3%</b>	<b>4,050</b>	<b>26.8%</b>	<b>1,691</b>	<b>11.2%</b>	<b>2,485</b>	<b>16.5%</b>	<b>4,872</b>	<b>74.8%</b>	<b>1,642</b>	<b>25.2%</b>	<b>6,515</b>
<b>Overall Total</b>	<b>176,711</b>	<b>7,351</b>		<b>196,203</b>	<b>63,340</b>		<b>21,344</b>		<b>4,581</b>		<b>52,644</b>		<b>21,983</b>		<b>32,311</b>		<b>63,340</b>	<b>74.8%</b>	<b>21,352</b>	<b>25.2%</b>	<b>84,692</b>

<sup>1</sup>Comes from three distinct sources: (1) the Automatic Call Distribution (ACD) phone system; which keeps a count of the number of calls and call routing; (2) Monthly NJSpirit Intakes; which record decision making on calls received by hotline screeners, and (3) NJSpirit extracts of assigned CWS Referrals and CPS Reports.

<sup>2</sup>The number of Intakes, CPS Reports, and CWS Referrals are based on an extract from NJSpirit. Data extracted by the Office of Research, Evaluation, and Reporting on **December 8, 2017** includes all Intakes, CPS Reports, and CWS Referrals received from **November 1, 2017 through November 30, 2017**.

<sup>3</sup>The number calls received through the ACD System that were directed to a screener from any call-in phone number.

<sup>4</sup>The number of calls received through the ACD System that are abandoned either while waiting in queue or while ringing.

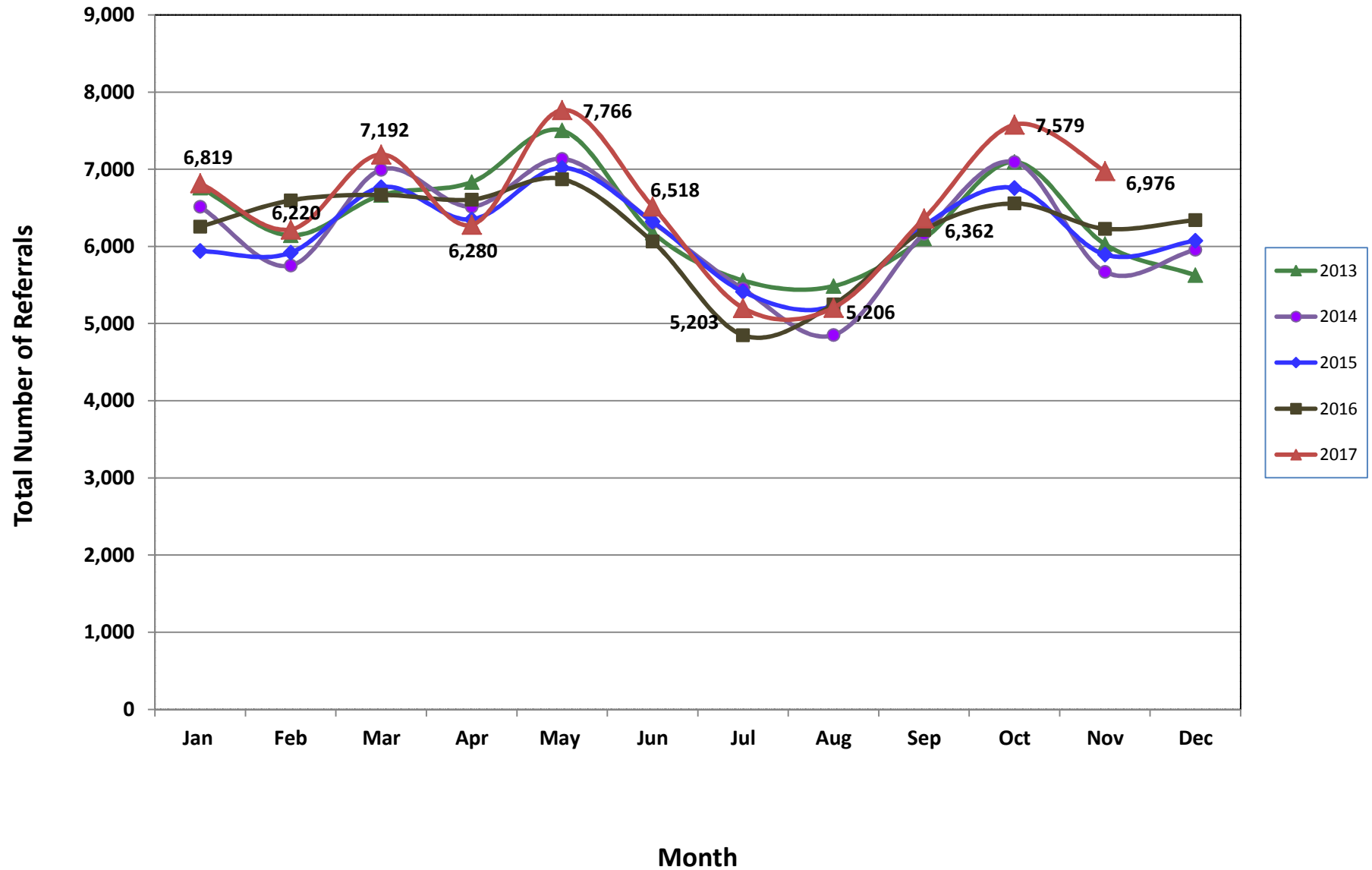
<sup>5</sup>The number of Intakes entered in NJSpirit from the number of calls received.

<sup>6</sup>The number of Intakes recorded in NJSpirit, by type of Intake. There is not a one-to-one relationship between an ACD call and an Intake; multiple calls to State Central Registry (SCR) may result in a single Intake, or one call may result in multiple Intakes.

<sup>7</sup>Intake: The process of documenting: a report of alleged abuse or neglect of a child (CPS); a request for services on behalf of a child, or a referral of a child for services (CWS); a call in which the caller provides additional or clarifying information about a current service case or active investigation (RI); informing a caller of, or referring a caller to, services available from other private or public sources (I&R); a call that requires no action by CP&P (NAR); or a response to a simple inquiry (IO).

<sup>8</sup>NJ SPIRIT: NJ Statewide Protection Investigation and Reporting Information Tool case management system

### CP&P Annual Trends in CPS Reports and CWS Referrals



**Table 2: Assignments to CP&P Offices: CPS Reports and CWS Referrals<sup>1</sup>**

Intake Date <sup>3</sup>		CPS Reports <sup>2</sup>	CWS Referrals <sup>2</sup>	Total Assignments <sup>2</sup>
2013	Jan 2013	5,464	1,296	6,760
	Feb 2013	4,966	1,177	6,143
	Mar 2013	5,355	1,309	6,664
	Apr 2013	5,430	1,402	6,832
	May 2013	5,993	1,510	7,503
	Jun 2013	4,947	1,230	6,177
	Jul 2013	4,330	1,228	5,558
	Aug 2013	4,330	1,155	5,485
	Sep 2013	4,851	1,251	6,102
	Oct 2013	5,614	1,481	7,095
	Nov 2013	4,694	1,334	6,028
	Dec 2013	4,397	1,229	5,626
	<b>Total</b>	<b>60,371</b>	<b>15,602</b>	<b>75,973</b>
2014	Jan 2014	5,097	1,416	6,513
	Feb 2014	4,457	1,295	5,752
	Mar 2014	5,408	1,586	6,994
	Apr 2014	5,049	1,467	6,516
	May 2014	5,501	1,635	7,136
	Jun 2014	4,796	1,517	6,313
	Jul 2014	4,202	1,247	5,449
	Aug 2014	3,629	1,222	4,851
	Sep 2014	4,668	1,498	6,166
	Oct 2014	5,509	1,586	7,095
	Nov 2014	4,254	1,416	5,670
	Dec 2014	4,509	1,447	5,956
	<b>Total</b>	<b>57,079</b>	<b>17,332</b>	<b>74,411</b>
2015	Jan 2015	4,549	1,391	5,940
	Feb 2015	4,574	1,345	5,919
	Mar 2015	5,187	1,580	6,767
	Apr 2015	4,967	1,384	6,351
	May 2015	5,457	1,561	7,018
	Jun 2015	4,887	1,436	6,323
	Jul 2015	4,140	1,273	5,413
	Aug 2015	3,978	1,256	5,234
	Sep 2015	4,776	1,495	6,271
	Oct 2015	5,139	1,619	6,758
	Nov 2015	4,417	1,477	5,894
	Dec 2015	4,530	1,544	6,074
	<b>Total</b>	<b>56,601</b>	<b>17,361</b>	<b>73,962</b>

**Table 2: Assignments to CP&P Offices: CPS Reports and CWS Referrals<sup>1</sup>**

	Intake Date <sup>3</sup>	CPS Reports <sup>2</sup>	CWS Referrals <sup>2</sup>	Total Assignments <sup>2</sup>
2016	Jan 2016	4,686	1,571	6,257
	Feb 2016	4,974	1,622	6,596
	Mar 2016	5,000	1,669	6,669
	Apr 2016	5,065	1,542	6,607
	May 2016	5,238	1,633	6,871
	Jun 2016	4,602	1,461	6,063
	Jul 2016	3,663	1,187	4,850
	Aug 2016	3,941	1,307	5,248
	Sep 2016	4,654	1,559	6,213
	Oct 2016	4,935	1,622	6,557
	Nov 2016	4,677	1,552	6,229
	Dec 2016	4,762	1,580	6,342
		<b>Total</b>	<b>56,197</b>	<b>18,305</b>
2017	Jan 2017	5,111	1,708	6,819
	Feb 2017	4,716	1,504	6,220
	Mar 2017	5,349	1,843	7,192
	Apr 2017	4,790	1,490	6,280
	May 2017	5,847	1,919	7,766
	Jun 2017	4,853	1,665	6,518
	Jul 2017	3,814	1,389	5,203
	Aug 2017	3,866	1,340	5,206
	Sep 2017	4,719	1,643	6,362
	Oct 2017	5,613	1,966	7,579
	Nov 2017	5,223	1,753	6,976
		<b>Total</b>	<b>53,901</b>	<b>18,220</b>
<b>Grand Total</b>		<b>284,149</b>	<b>86,820</b>	<b>370,969</b>

<sup>1</sup>Source of Data: NJ SPIRIT

<sup>2</sup>A CPS Report or a CWS Referral may include multiple children in a family, with one or more allegation or request for services. In these cases, each CPS Report or CWS Referral is counted once - the CPS Report or the CWS Referral is the unit of analysis rather than the child.

<sup>3</sup>Prior to January 2014, the number of CPS Reports and CWS Referrals was based on the type of assignment of the CPS Report or CWS Referral. Beginning in January 2014, the number of CPS Reports and CWS Referrals is based on the number of CPS Reports and CWS Referrals received.

**Table 3: Source of CPS Reports and CWS Referrals**

	Source	Nov 2016	Dec 2016	Jan 2017	Feb 2017	Mar 2017	Apr 2017	May 2017	Jun 2017	Jul 2017	Aug 2017	Sep 2017	Oct 2017	Nov 2017		13 Month Total	
CPS Reports and CWS Referrals	School Staff	1,628	1,614	1,952	1,723	2,116	1,400	2,167	1,149	150	90	1211	2030	1851	27%	19,081	23%
	Healthcare Provider	799	846	873	837	867	824	924	932	818	873	861	968	953	14%	11,375	13%
	Law Enforcement	989	936	992	881	1,022	1,133	1,177	1,072	1,148	1169	1180	1236	1130	16%	14,065	17%
	Government Agency	399	384	453	432	491	376	434	438	400	423	442	475	399	6%	5,546	7%
	Parent	507	569	544	476	554	517	632	586	571	535	528	567	571	8%	7,157	8%
	Relative/Friend/Neighbor	431	443	444	379	434	462	536	525	541	494	462	513	493	7%	6,157	7%
	Anonymous	605	666	654	645	715	633	837	754	580	627	711	753	641	9%	8,821	10%
	CP&P	117	99	122	105	136	110	128	144	145	142	142	150	107	2%	1,647	2%
	Court/Legal	98	142	126	152	162	132	141	183	131	161	162	148	116	2%	1,854	2%
	Community Group/Individual	260	251	280	229	278	296	336	283	288	307	279	320	299	4%	3,706	4%
	Facility Staff (incl Correctional Facility)	85	85	98	76	81	99	95	102	90	92	89	97	75	1%	1,164	1%
	Child (Self)	41	41	34	34	34	22	38	38	35	41	46	32	41	1%	477	1%
	Other	252	255	232	240	280	259	300	296	283	235	236	272	273	4%	3,413	4%
	Daycare/Babysitter	18	11	15	11	22	17	21	16	23	17	13	18	27	0%	229	0%
	<b>Total</b>		<b>6,229</b>	<b>6,342</b>	<b>6,819</b>	<b>6,220</b>	<b>7,192</b>	<b>6,280</b>	<b>7,766</b>	<b>6,518</b>	<b>5,203</b>	<b>5,206</b>	<b>6,362</b>	<b>7,579</b>	<b>6,976</b>		<b>84,692</b>

**Table 4: Monthly Count of CPS Reports and CWS Referrals Assigned to Counties**

County														Average Number of Assignments Last 13 Months	Oct 17 to Nov 17 Numerical Difference
	Nov 2016	Dec 2016	Jan 2017	Feb 2017	Mar 2017	Apr 2017	May 2017	Jun 2017	Jul 2017	Aug 2017	Sep 2017	Oct 2017	Nov 2017		
Atlantic	243	239	241	221	271	233	312	253	214	245	255	293	253	252	-40
Bergen	352	384	423	375	409	370	425	351	284	291	362	428	418	375	-10
Burlington	325	259	333	289	343	262	394	283	262	256	328	371	343	311	-28
Camden	536	557	539	520	643	581	629	571	447	492	530	675	576	561	-99
Cape May	68	63	68	81	85	79	118	76	80	64	68	86	84	78	-2
Cumberland	230	229	277	213	248	243	260	236	203	207	249	252	213	235	-39
Essex	659	709	722	627	781	701	878	770	561	585	642	804	721	705	-83
Gloucester	224	282	272	291	303	251	274	280	221	235	232	282	267	263	-15
Hudson	389	433	449	413	453	379	519	434	295	290	418	452	454	414	2
Hunterdon	46	54	46	49	57	39	59	37	49	40	64	64	50	50	-14
Mercer	280	224	288	236	277	251	327	272	210	222	308	282	298	267	16
Middlesex	379	441	468	476	514	431	530	404	350	257	420	533	525	441	-8
Monmouth	332	348	391	374	399	349	435	357	276	264	349	442	381	361	-61
Morris	214	227	218	219	244	239	260	239	163	168	216	290	250	227	-40
Ocean	364	384	416	378	420	390	473	377	339	351	342	422	418	390	-4
Passaic	439	431	518	413	522	412	550	424	324	319	425	576	513	451	-63
Salem	66	60	93	73	78	87	90	85	74	54	102	83	100	80	17
Somerset	184	164	147	146	178	153	180	151	111	117	127	166	169	153	3
Sussex	96	104	101	84	106	74	102	93	72	92	92	106	111	95	5
Union	312	306	341	303	361	317	375	335	255	246	345	353	343	322	-10
Warren	84	79	108	96	95	84	85	99	109	69	117	131	102	97	-29
<b>County Subtotals</b>	<b>5,822</b>	<b>5,977</b>	<b>6,459</b>	<b>5,877</b>	<b>6,787</b>	<b>5,925</b>	<b>7,275</b>	<b>6,127</b>	<b>4,899</b>	<b>4,864</b>	<b>5,991</b>	<b>7,091</b>	<b>6,589</b>	<b>6,129</b>	<b>-502</b>
Central Region IAIU	57	59	41	58	54	50	75	67	42	55	54	68	73	58	5
Metro Region IAIU	48	45	61	54	68	51	69	48	34	25	41	58	48	50	-10
Northern Region IAIU	70	52	65	58	68	48	87	49	47	34	51	70	58	58	-12
Southern Region IAIU	89	79	76	71	87	76	108	80	50	63	66	102	77	79	-25
<b>IAIU Subtotals</b>	<b>264</b>	<b>235</b>	<b>243</b>	<b>241</b>	<b>277</b>	<b>225</b>	<b>339</b>	<b>244</b>	<b>173</b>	<b>177</b>	<b>212</b>	<b>298</b>	<b>256</b>	<b>245</b>	<b>-42</b>
<b>Unable to Determine<sup>1</sup></b>	<b>143</b>	<b>129</b>	<b>113</b>	<b>100</b>	<b>126</b>	<b>127</b>	<b>152</b>	<b>146</b>	<b>129</b>	<b>163</b>	<b>158</b>	<b>187</b>	<b>129</b>	<b>139</b>	<b>-58</b>
<b>Other Offices</b>	<b>0</b>	<b>1</b>	<b>4</b>	<b>2</b>	<b>2</b>	<b>3</b>	<b>0</b>	<b>1</b>	<b>2</b>	<b>2</b>	<b>1</b>	<b>3</b>	<b>2</b>	<b>2</b>	<b>-1</b>
<b>Grand Total</b>	<b>6,229</b>	<b>6,342</b>	<b>6,819</b>	<b>6,220</b>	<b>7,192</b>	<b>6,280</b>	<b>7,766</b>	<b>6,518</b>	<b>5,203</b>	<b>5,206</b>	<b>6,362</b>	<b>7,579</b>	<b>6,976</b>	<b>6,515</b>	<b>-603</b>

<sup>1</sup>CPS Reports or CWS Referrals not assigned to an office through the Assignment Designee, but were assigned to an office for an assessment or investigation.



**Table 5: Monthly Count of CPS Reports and CWS Referrals Assigned to CP&P Local Offices**

County	Local Office	Type of Referral	Nov 2016	Dec 2016	Jan 2017	Feb 2017	Mar 2017	Apr 2017	May 2017	Jun 2017	Jul 2017	Aug 2017	Sep 2017	Oct 2017	Nov 2017	Total
ATLANTIC	Atlantic East	CPS	116	118	107	102	118	101	141	107	108	102	107	138	99	1,464
		CWS	42	33	27	21	35	34	45	41	32	41	35	47	51	484
		<b>Total</b>	<b>158</b>	<b>151</b>	<b>134</b>	<b>123</b>	<b>153</b>	<b>135</b>	<b>186</b>	<b>148</b>	<b>140</b>	<b>143</b>	<b>142</b>	<b>185</b>	<b>150</b>	<b>1,948</b>
	Atlantic West	CPS	60	75	73	69	86	74	102	76	60	81	90	74	79	999
		CWS	25	13	34	29	32	24	24	29	14	21	23	34	24	326
		<b>Total</b>	<b>85</b>	<b>88</b>	<b>107</b>	<b>98</b>	<b>118</b>	<b>98</b>	<b>126</b>	<b>105</b>	<b>74</b>	<b>102</b>	<b>113</b>	<b>108</b>	<b>103</b>	<b>1,325</b>
	County Totals	CPS	176	193	180	171	204	175	243	183	168	183	197	212	178	2,463
		CWS	67	46	61	50	67	58	69	70	46	62	58	81	75	810
		<b>Total</b>	<b>243</b>	<b>239</b>	<b>241</b>	<b>221</b>	<b>271</b>	<b>233</b>	<b>312</b>	<b>253</b>	<b>214</b>	<b>245</b>	<b>255</b>	<b>293</b>	<b>253</b>	<b>3,273</b>
BERGEN	Bergen Central	CPS	104	125	127	118	121	104	129	109	72	70	106	142	140	1,467
		CWS	40	44	52	42	45	42	51	31	34	33	47	45	47	553
		<b>Total</b>	<b>144</b>	<b>169</b>	<b>179</b>	<b>160</b>	<b>166</b>	<b>146</b>	<b>180</b>	<b>140</b>	<b>106</b>	<b>103</b>	<b>153</b>	<b>187</b>	<b>187</b>	<b>2,020</b>
	Bergen South	CPS	161	153	174	152	165	175	166	151	117	138	149	182	167	2,050
		CWS	47	62	70	63	78	49	79	60	61	50	60	59	64	802
		<b>Total</b>	<b>208</b>	<b>215</b>	<b>244</b>	<b>215</b>	<b>243</b>	<b>224</b>	<b>245</b>	<b>211</b>	<b>178</b>	<b>188</b>	<b>209</b>	<b>241</b>	<b>231</b>	<b>2,852</b>
	County Totals	CPS	265	278	301	270	286	279	295	260	189	208	255	324	307	3,517
		CWS	87	106	122	105	123	91	130	91	95	83	107	104	111	1,355
		<b>Total</b>	<b>352</b>	<b>384</b>	<b>423</b>	<b>375</b>	<b>409</b>	<b>370</b>	<b>425</b>	<b>351</b>	<b>284</b>	<b>291</b>	<b>362</b>	<b>428</b>	<b>418</b>	<b>4,872</b>
BURLINGTON	Burlington East	CPS	126	104	118	98	118	82	155	107	116	97	125	146	137	1,529
		CWS	33	30	45	40	55	34	61	35	32	30	39	52	43	529
		<b>Total</b>	<b>159</b>	<b>134</b>	<b>163</b>	<b>138</b>	<b>173</b>	<b>116</b>	<b>216</b>	<b>142</b>	<b>148</b>	<b>127</b>	<b>164</b>	<b>198</b>	<b>180</b>	<b>2,058</b>
	Burlington West	CPS	118	92	125	111	125	109	130	108	81	96	116	126	117	1,454
		CWS	48	33	45	40	45	37	48	33	33	33	48	47	46	536
		<b>Total</b>	<b>166</b>	<b>125</b>	<b>170</b>	<b>151</b>	<b>170</b>	<b>146</b>	<b>178</b>	<b>141</b>	<b>114</b>	<b>129</b>	<b>164</b>	<b>173</b>	<b>163</b>	<b>1,990</b>
	County Totals	CPS	244	196	243	209	243	191	285	215	197	193	241	272	254	2,983
		CWS	81	63	90	80	100	71	109	68	65	63	87	99	89	1,065
		<b>Total</b>	<b>325</b>	<b>259</b>	<b>333</b>	<b>289</b>	<b>343</b>	<b>262</b>	<b>394</b>	<b>283</b>	<b>262</b>	<b>256</b>	<b>328</b>	<b>371</b>	<b>343</b>	<b>4,048</b>
CAMDEN	Camden Central	CPS	121	114	106	113	158	119	125	136	99	117	106	148	129	1,591
		CWS	39	37	38	34	40	28	31	38	29	36	27	40	41	458
		<b>Total</b>	<b>160</b>	<b>151</b>	<b>144</b>	<b>147</b>	<b>198</b>	<b>147</b>	<b>156</b>	<b>174</b>	<b>128</b>	<b>153</b>	<b>133</b>	<b>188</b>	<b>170</b>	<b>2,049</b>
	Camden East	CPS	98	114	126	88	104	125	111	103	75	94	104	123	118	1,383
		CWS	34	43	43	30	33	32	46	32	34	28	30	49	46	480
		<b>Total</b>	<b>132</b>	<b>157</b>	<b>169</b>	<b>118</b>	<b>137</b>	<b>157</b>	<b>157</b>	<b>135</b>	<b>109</b>	<b>122</b>	<b>134</b>	<b>172</b>	<b>164</b>	<b>1,863</b>
	Camden North	CPS	95	102	102	107	131	120	155	114	88	87	112	113	109	1,435
		CWS	34	36	32	32	46	30	28	43	37	29	41	47	31	466
		<b>Total</b>	<b>129</b>	<b>138</b>	<b>134</b>	<b>139</b>	<b>177</b>	<b>150</b>	<b>183</b>	<b>157</b>	<b>125</b>	<b>116</b>	<b>153</b>	<b>160</b>	<b>140</b>	<b>1,901</b>
	Camden South	CPS	89	78	73	89	96	99	103	88	71	78	88	108	74	1,134
		CWS	26	33	19	27	35	28	30	17	14	23	22	47	28	349
		<b>Total</b>	<b>115</b>	<b>111</b>	<b>92</b>	<b>116</b>	<b>131</b>	<b>127</b>	<b>133</b>	<b>105</b>	<b>85</b>	<b>101</b>	<b>110</b>	<b>155</b>	<b>102</b>	<b>1,483</b>
County Totals	CPS	403	408	407	397	489	463	494	441	333	376	410	492	430	5,543	
	CWS	133	149	132	123	154	118	135	130	114	116	120	183	146	1,753	
	<b>Total</b>	<b>536</b>	<b>557</b>	<b>539</b>	<b>520</b>	<b>643</b>	<b>581</b>	<b>629</b>	<b>571</b>	<b>447</b>	<b>492</b>	<b>530</b>	<b>675</b>	<b>576</b>	<b>7,296</b>	
CAPE MAY	Cape May	CPS	48	53	52	65	68	50	100	67	64	45	58	66	61	797
		CWS	20	10	16	16	17	29	18	9	16	19	10	20	23	223
		<b>Total</b>	<b>68</b>	<b>63</b>	<b>68</b>	<b>81</b>	<b>85</b>	<b>79</b>	<b>118</b>	<b>76</b>	<b>80</b>	<b>64</b>	<b>68</b>	<b>86</b>	<b>84</b>	<b>1,020</b>
	County Totals	CPS	48	53	52	65	68	50	100	67	64	45	58	66	61	797
		CWS	20	10	16	16	17	29	18	9	16	19	10	20	23	223
		<b>Total</b>	<b>68</b>	<b>63</b>	<b>68</b>	<b>81</b>	<b>85</b>	<b>79</b>	<b>118</b>	<b>76</b>	<b>80</b>	<b>64</b>	<b>68</b>	<b>86</b>	<b>84</b>	<b>1,020</b>
CUMBERLAND	Cumberland East	CPS	58	70	70	59	60	65	70	48	50	54	72	68	48	792
		CWS	18	10	26	26	20	22	21	20	33	23	19	27	13	278
		<b>Total</b>	<b>76</b>	<b>80</b>	<b>96</b>	<b>85</b>	<b>80</b>	<b>87</b>	<b>91</b>	<b>68</b>	<b>83</b>	<b>77</b>	<b>91</b>	<b>95</b>	<b>61</b>	<b>1,070</b>
	Cumberland West	CPS	126	111	143	93	118	123	135	123	84	103	118	117	113	1,507
		CWS	28	38	38	35	50	33	34	45	36	27	40	40	39	483
		<b>Total</b>	<b>154</b>	<b>149</b>	<b>181</b>	<b>128</b>	<b>168</b>	<b>156</b>	<b>169</b>	<b>168</b>	<b>120</b>	<b>130</b>	<b>158</b>	<b>157</b>	<b>152</b>	<b>1,990</b>
	County Totals	CPS	184	181	213	152	178	188	205	171	134	157	190	185	161	2,299
		CWS	46	48	64	61	70	55	55	65	69	50	59	67	52	761
		<b>Total</b>	<b>230</b>	<b>229</b>	<b>277</b>	<b>213</b>	<b>248</b>	<b>243</b>	<b>260</b>	<b>236</b>	<b>203</b>	<b>207</b>	<b>249</b>	<b>252</b>	<b>213</b>	<b>3,060</b>



**Table 5: Monthly Count of CPS Reports and CWS Referrals Assigned to CP&P Local Offices**

County	Local Office	Type of Referral	Month													Total
			Nov 2016	Dec 2016	Jan 2017	Feb 2017	Mar 2017	Apr 2017	May 2017	Jun 2017	Jul 2017	Aug 2017	Sep 2017	Oct 2017	Nov 2017	
ESSEX	Essex Central	CPS	94	108	111	81	77	78	118	92	82	78	79	121	108	1,227
		CWS	43	40	31	33	41	32	49	42	33	23	33	40	33	473
		<b>Total</b>	<b>137</b>	<b>148</b>	<b>142</b>	<b>114</b>	<b>118</b>	<b>110</b>	<b>167</b>	<b>134</b>	<b>115</b>	<b>101</b>	<b>112</b>	<b>161</b>	<b>141</b>	<b>1,700</b>
	Essex North	CPS	77	83	68	49	79	62	87	84	50	58	70	68	67	902
		CWS	27	25	27	24	26	35	31	32	25	18	23	35	31	359
		<b>Total</b>	<b>104</b>	<b>108</b>	<b>95</b>	<b>73</b>	<b>105</b>	<b>97</b>	<b>118</b>	<b>116</b>	<b>75</b>	<b>76</b>	<b>93</b>	<b>103</b>	<b>98</b>	<b>1,261</b>
	Essex South	CPS	58	55	71	69	69	65	76	62	45	53	58	69	68	818
		CWS	25	20	24	16	31	22	32	21	12	23	19	34	20	299
		<b>Total</b>	<b>83</b>	<b>75</b>	<b>95</b>	<b>85</b>	<b>100</b>	<b>87</b>	<b>108</b>	<b>83</b>	<b>57</b>	<b>76</b>	<b>77</b>	<b>103</b>	<b>88</b>	<b>1117</b>
	Newark Center City	CPS	79	95	95	81	103	102	121	114	71	75	89	110	98	1233
		CWS	36	40	22	25	40	31	38	47	31	37	30	29	34	440
		<b>Total</b>	<b>115</b>	<b>135</b>	<b>117</b>	<b>106</b>	<b>143</b>	<b>133</b>	<b>159</b>	<b>161</b>	<b>102</b>	<b>112</b>	<b>119</b>	<b>139</b>	<b>132</b>	<b>1673</b>
	Newark Northeast	CPS	64	74	95	89	104	104	108	103	83	90	94	99	106	1213
		CWS	23	34	38	25	46	39	39	32	25	18	29	44	34	426
		<b>Total</b>	<b>87</b>	<b>108</b>	<b>133</b>	<b>114</b>	<b>150</b>	<b>143</b>	<b>147</b>	<b>135</b>	<b>108</b>	<b>108</b>	<b>123</b>	<b>143</b>	<b>140</b>	<b>1639</b>
Newark South	CPS	94	109	102	101	120	95	128	99	78	75	80	116	93	1290	
	CWS	39	26	38	34	45	36	51	42	26	37	38	39	29	480	
	<b>Total</b>	<b>133</b>	<b>135</b>	<b>140</b>	<b>135</b>	<b>165</b>	<b>131</b>	<b>179</b>	<b>141</b>	<b>104</b>	<b>112</b>	<b>118</b>	<b>155</b>	<b>122</b>	<b>1770</b>	
County Totals	CPS	466	524	542	470	552	506	638	554	409	429	470	583	540	6683	
	CWS	193	185	180	157	229	195	240	216	152	156	172	221	181	2477	
	<b>Total</b>	<b>659</b>	<b>709</b>	<b>722</b>	<b>627</b>	<b>781</b>	<b>701</b>	<b>878</b>	<b>770</b>	<b>561</b>	<b>585</b>	<b>642</b>	<b>804</b>	<b>721</b>	<b>9160</b>	
GLOUCESTER	Gloucester East	CPS	94	101	96	112	109	85	104	106	74	91	79	102	89	1242
		CWS	24	26	28	28	29	27	35	31	27	25	33	28	34	375
		<b>Total</b>	<b>118</b>	<b>127</b>	<b>124</b>	<b>140</b>	<b>138</b>	<b>112</b>	<b>139</b>	<b>137</b>	<b>101</b>	<b>116</b>	<b>112</b>	<b>130</b>	<b>123</b>	<b>1617</b>
	Gloucester West	CPS	84	131	106	119	125	103	118	104	91	85	86	123	113	1388
		CWS	22	24	42	32	40	36	17	39	29	34	34	29	31	409
		<b>Total</b>	<b>106</b>	<b>155</b>	<b>148</b>	<b>151</b>	<b>165</b>	<b>139</b>	<b>135</b>	<b>143</b>	<b>120</b>	<b>119</b>	<b>120</b>	<b>152</b>	<b>144</b>	<b>1797</b>
	County Totals	CPS	178	232	202	231	234	188	222	210	165	176	165	225	202	2630
		CWS	46	50	70	60	69	63	52	70	56	59	67	57	65	784
		<b>Total</b>	<b>224</b>	<b>282</b>	<b>272</b>	<b>291</b>	<b>303</b>	<b>251</b>	<b>274</b>	<b>280</b>	<b>221</b>	<b>235</b>	<b>232</b>	<b>282</b>	<b>267</b>	<b>3414</b>
HUDSON	Hudson Central	CPS	65	80	80	69	80	89	78	84	59	52	69	71	87	963
		CWS	22	36	39	34	27	26	34	32	23	26	35	34	41	409
		<b>Total</b>	<b>87</b>	<b>116</b>	<b>119</b>	<b>103</b>	<b>107</b>	<b>115</b>	<b>112</b>	<b>116</b>	<b>82</b>	<b>78</b>	<b>104</b>	<b>105</b>	<b>128</b>	<b>1372</b>
	Hudson North	CPS	79	72	85	78	87	69	103	67	67	42	72	76	83	980
		CWS	29	30	30	36	42	21	38	39	19	14	31	29	33	391
		<b>Total</b>	<b>108</b>	<b>102</b>	<b>115</b>	<b>114</b>	<b>129</b>	<b>90</b>	<b>141</b>	<b>106</b>	<b>86</b>	<b>56</b>	<b>103</b>	<b>105</b>	<b>116</b>	<b>1371</b>
	Hudson South	CPS	81	71	86	91	75	53	101	70	53	45	80	86	68	960
		CWS	41	36	36	30	36	16	45	33	16	21	27	39	17	393
		<b>Total</b>	<b>122</b>	<b>107</b>	<b>122</b>	<b>121</b>	<b>111</b>	<b>69</b>	<b>146</b>	<b>103</b>	<b>69</b>	<b>66</b>	<b>107</b>	<b>125</b>	<b>85</b>	<b>1353</b>
	Hudson West	CPS	52	84	63	53	71	74	89	77	33	66	74	87	104	927
		CWS	20	24	30	22	35	31	31	32	25	24	30	30	21	355
		<b>Total</b>	<b>72</b>	<b>108</b>	<b>93</b>	<b>75</b>	<b>106</b>	<b>105</b>	<b>120</b>	<b>109</b>	<b>58</b>	<b>90</b>	<b>104</b>	<b>117</b>	<b>125</b>	<b>1282</b>
County Totals	CPS	277	307	314	291	313	285	371	298	212	205	295	320	342	3830	
	CWS	112	126	135	122	140	94	148	136	83	85	123	132	112	1548	
	<b>Total</b>	<b>389</b>	<b>433</b>	<b>449</b>	<b>413</b>	<b>453</b>	<b>379</b>	<b>519</b>	<b>434</b>	<b>295</b>	<b>290</b>	<b>418</b>	<b>452</b>	<b>454</b>	<b>5378</b>	
HUNTERDON	Hunterdon	CPS	28	41	32	36	47	27	38	31	30	32	46	40	30	458
		CWS	18	13	14	13	10	12	21	6	19	8	18	24	20	196
		<b>Total</b>	<b>46</b>	<b>54</b>	<b>46</b>	<b>49</b>	<b>57</b>	<b>39</b>	<b>59</b>	<b>37</b>	<b>49</b>	<b>40</b>	<b>64</b>	<b>64</b>	<b>50</b>	<b>654</b>
	County Totals	CPS	28	41	32	36	47	27	38	31	30	32	46	40	30	458
		CWS	18	13	14	13	10	12	21	6	19	8	18	24	20	196
<b>Total</b>		<b>46</b>	<b>54</b>	<b>46</b>	<b>49</b>	<b>57</b>	<b>39</b>	<b>59</b>	<b>37</b>	<b>49</b>	<b>40</b>	<b>64</b>	<b>64</b>	<b>50</b>	<b>654</b>	
MERCER	Mercer North	CPS	122	77	107	91	95	89	120	98	62	94	103	104	105	1267
		CWS	27	25	37	31	45	23	47	29	35	20	49	34	38	440
		<b>Total</b>	<b>149</b>	<b>102</b>	<b>144</b>	<b>122</b>	<b>140</b>	<b>112</b>	<b>167</b>	<b>127</b>	<b>97</b>	<b>114</b>	<b>152</b>	<b>138</b>	<b>143</b>	<b>1707</b>
	Mercer South	CPS	98	87	109	89	105	104	118	113	78	83	109	109	112	1314
		CWS	33	35	35	25	32	35	42	32	35	25	46	35	43	453
		<b>Total</b>	<b>131</b>	<b>122</b>	<b>144</b>	<b>114</b>	<b>137</b>	<b>139</b>	<b>160</b>	<b>145</b>	<b>113</b>	<b>108</b>	<b>155</b>	<b>144</b>	<b>155</b>	<b>1767</b>
	County Totals	CPS	220	164	216	180	200	193	238	211	140	177	212	213	217	2581
CWS		60	60	72	56	77	58	89	61	70	45	95	69	81	893	
<b>Total</b>		<b>280</b>	<b>224</b>	<b>288</b>	<b>236</b>	<b>277</b>	<b>251</b>	<b>327</b>	<b>272</b>	<b>210</b>	<b>222</b>	<b>307</b>	<b>282</b>	<b>298</b>	<b>3474</b>	

Data in this report is preliminary and may differ from any final report. This report is produced to ensure continuous quality improvement throughout DCF.



**Table 5: Monthly Count of CPS Reports and CWS Referrals Assigned to CP&P Local Offices**

County	Local Office	Type of Referral	Nov 2016	Dec 2016	Jan 2017	Feb 2017	Mar 2017	Apr 2017	May 2017	Jun 2017	Jul 2017	Aug 2017	Sep 2017	Oct 2017	Nov 2017	Total
MIDDLESEX	Middlesex Central	CPS	73	70	91	78	105	103	95	78	75	44	99	102	115	1128
		CWS	14	25	27	24	21	22	39	25	29	17	36	41	35	355
		<b>Total</b>	<b>87</b>	<b>95</b>	<b>118</b>	<b>102</b>	<b>126</b>	<b>125</b>	<b>134</b>	<b>103</b>	<b>104</b>	<b>61</b>	<b>135</b>	<b>143</b>	<b>150</b>	<b>1483</b>
	Middlesex Coastal	CPS	106	131	121	150	151	121	135	112	98	75	112	142	124	1578
		CWS	33	39	46	42	40	32	47	43	23	28	41	51	53	518
		<b>Total</b>	<b>139</b>	<b>170</b>	<b>167</b>	<b>192</b>	<b>191</b>	<b>153</b>	<b>182</b>	<b>155</b>	<b>121</b>	<b>103</b>	<b>153</b>	<b>193</b>	<b>177</b>	<b>2096</b>
	Middlesex West	CPS	114	134	154	149	148	119	160	111	90	62	112	141	140	1634
		CWS	39	42	29	33	49	34	54	35	35	31	20	56	58	515
		<b>Total</b>	<b>153</b>	<b>176</b>	<b>183</b>	<b>182</b>	<b>197</b>	<b>153</b>	<b>214</b>	<b>146</b>	<b>125</b>	<b>93</b>	<b>132</b>	<b>197</b>	<b>198</b>	<b>2149</b>
	County Totals	CPS	293	335	366	377	404	343	390	301	263	181	323	385	379	4340
CWS		86	106	102	99	110	88	140	103	87	76	97	148	146	1388	
<b>Total</b>		<b>379</b>	<b>441</b>	<b>468</b>	<b>476</b>	<b>514</b>	<b>431</b>	<b>530</b>	<b>404</b>	<b>350</b>	<b>257</b>	<b>420</b>	<b>533</b>	<b>525</b>	<b>5728</b>	
MONMOUTH	Monmouth North	CPS	142	134	160	159	154	149	174	145	126	103	139	173	152	1910
		CWS	42	29	49	41	47	34	64	52	30	32	38	54	54	566
		<b>Total</b>	<b>184</b>	<b>163</b>	<b>209</b>	<b>200</b>	<b>201</b>	<b>183</b>	<b>238</b>	<b>197</b>	<b>156</b>	<b>135</b>	<b>177</b>	<b>227</b>	<b>206</b>	<b>2476</b>
	Monmouth South	CPS	112	147	130	120	149	113	144	119	85	97	120	161	133	1630
		CWS	36	38	52	54	49	53	53	41	35	32	52	54	42	591
		<b>Total</b>	<b>148</b>	<b>185</b>	<b>182</b>	<b>174</b>	<b>198</b>	<b>166</b>	<b>197</b>	<b>160</b>	<b>120</b>	<b>129</b>	<b>172</b>	<b>215</b>	<b>175</b>	<b>2221</b>
	County Totals	CPS	254	281	290	279	303	262	318	264	211	200	259	334	285	3540
		CWS	78	67	101	95	96	87	117	93	65	64	90	108	96	1157
		<b>Total</b>	<b>332</b>	<b>348</b>	<b>391</b>	<b>374</b>	<b>399</b>	<b>349</b>	<b>435</b>	<b>357</b>	<b>276</b>	<b>264</b>	<b>349</b>	<b>442</b>	<b>381</b>	<b>4697</b>
MORRIS	Morris East	CPS	79	72	72	68	78	83	88	82	53	52	60	81	86	954
		CWS	31	24	27	23	38	31	28	29	21	26	35	36	38	387
		<b>Total</b>	<b>110</b>	<b>96</b>	<b>99</b>	<b>91</b>	<b>116</b>	<b>114</b>	<b>116</b>	<b>111</b>	<b>74</b>	<b>78</b>	<b>95</b>	<b>117</b>	<b>124</b>	<b>1341</b>
	Morris West	CPS	74	87	78	97	89	90	104	93	70	64	85	112	99	1142
		CWS	30	44	41	31	39	35	40	35	19	26	36	61	27	464
		<b>Total</b>	<b>104</b>	<b>131</b>	<b>119</b>	<b>128</b>	<b>128</b>	<b>125</b>	<b>144</b>	<b>128</b>	<b>89</b>	<b>90</b>	<b>121</b>	<b>173</b>	<b>126</b>	<b>1606</b>
	County Totals	CPS	153	159	150	165	167	173	192	175	123	116	145	193	185	2096
		CWS	61	68	68	54	77	66	68	64	40	52	71	97	65	851
		<b>Total</b>	<b>214</b>	<b>227</b>	<b>218</b>	<b>219</b>	<b>244</b>	<b>239</b>	<b>260</b>	<b>239</b>	<b>163</b>	<b>168</b>	<b>216</b>	<b>290</b>	<b>250</b>	<b>2947</b>
OCEAN	Ocean North	CPS	151	154	163	136	180	165	193	148	122	121	134	179	181	2027
		CWS	41	51	47	40	48	43	60	41	38	46	37	52	45	589
		<b>Total</b>	<b>192</b>	<b>205</b>	<b>210</b>	<b>176</b>	<b>228</b>	<b>208</b>	<b>253</b>	<b>189</b>	<b>160</b>	<b>167</b>	<b>171</b>	<b>231</b>	<b>226</b>	<b>2616</b>
	Ocean South	CPS	133	131	159	163	156	148	182	133	134	130	129	144	142	1884
		CWS	39	48	47	39	36	34	38	55	45	54	42	47	50	574
		<b>Total</b>	<b>172</b>	<b>179</b>	<b>206</b>	<b>202</b>	<b>192</b>	<b>182</b>	<b>220</b>	<b>188</b>	<b>179</b>	<b>184</b>	<b>171</b>	<b>191</b>	<b>192</b>	<b>2458</b>
	County Totals	CPS	284	285	322	299	336	313	375	281	256	251	263	323	323	3911
		CWS	80	99	94	79	84	77	98	96	83	100	79	99	95	1163
		<b>Total</b>	<b>364</b>	<b>384</b>	<b>416</b>	<b>378</b>	<b>420</b>	<b>390</b>	<b>473</b>	<b>377</b>	<b>339</b>	<b>351</b>	<b>342</b>	<b>422</b>	<b>418</b>	<b>5074</b>
PASSAIC	Passaic Central	CPS	176	152	184	175	182	168	197	150	117	128	172	228	199	2228
		CWS	82	68	85	73	84	63	82	52	40	40	60	90	76	895
		<b>Total</b>	<b>258</b>	<b>220</b>	<b>269</b>	<b>248</b>	<b>266</b>	<b>231</b>	<b>279</b>	<b>202</b>	<b>157</b>	<b>168</b>	<b>232</b>	<b>318</b>	<b>275</b>	<b>3123</b>
	Passaic North	CPS	129	146	178	120	182	130	194	157	119	104	130	176	158	1923
		CWS	52	65	71	45	74	51	77	65	48	47	63	82	80	820
		<b>Total</b>	<b>181</b>	<b>211</b>	<b>249</b>	<b>165</b>	<b>256</b>	<b>181</b>	<b>271</b>	<b>222</b>	<b>167</b>	<b>151</b>	<b>193</b>	<b>258</b>	<b>238</b>	<b>2743</b>
	County Totals	CPS	305	298	362	295	364	298	391	307	236	232	302	404	357	4151
		CWS	134	133	156	118	158	114	159	117	88	87	123	172	156	1715
		<b>Total</b>	<b>439</b>	<b>431</b>	<b>518</b>	<b>413</b>	<b>522</b>	<b>412</b>	<b>550</b>	<b>424</b>	<b>324</b>	<b>319</b>	<b>425</b>	<b>576</b>	<b>513</b>	<b>5866</b>
SALEM	Salem	CPS	51	45	80	57	61	72	65	68	52	45	82	67	77	822
		CWS	15	15	13	16	17	15	25	17	22	9	20	16	23	223
		<b>Total</b>	<b>66</b>	<b>60</b>	<b>93</b>	<b>73</b>	<b>78</b>	<b>87</b>	<b>90</b>	<b>85</b>	<b>74</b>	<b>54</b>	<b>102</b>	<b>83</b>	<b>100</b>	<b>1045</b>
	County Totals	CPS	51	45	80	57	61	72	65	68	52	45	82	67	77	822
		CWS	15	15	13	16	17	15	25	17	22	9	20	16	23	223
<b>Total</b>	<b>66</b>	<b>60</b>	<b>93</b>	<b>73</b>	<b>78</b>	<b>87</b>	<b>90</b>	<b>85</b>	<b>74</b>	<b>54</b>	<b>102</b>	<b>83</b>	<b>100</b>	<b>1045</b>		
SOMERSET	Somerset	CPS	136	122	111	109	126	122	135	121	74	83	97	136	130	1502
		CWS	48	42	36	37	52	31	45	30	37	34	30	30	39	491
		<b>Total</b>	<b>184</b>	<b>164</b>	<b>147</b>	<b>146</b>	<b>178</b>	<b>153</b>	<b>180</b>	<b>151</b>	<b>111</b>	<b>117</b>	<b>127</b>	<b>166</b>	<b>169</b>	<b>1993</b>
	County Totals	CPS	136	122	111	109	126	122	135	121	74	83	97	136	130	1502
		CWS	48	42	36	37	52	31	45	30	37	34	30	30	39	491
<b>Total</b>	<b>184</b>	<b>164</b>	<b>147</b>	<b>146</b>	<b>178</b>	<b>153</b>	<b>180</b>	<b>151</b>	<b>111</b>	<b>117</b>	<b>127</b>	<b>166</b>	<b>169</b>	<b>1993</b>		

Data in this report is preliminary and may differ from any final report. This report is produced to ensure continuous quality improvement throughout DCF.

**Table 5: Monthly Count of CPS Reports and CWS Referrals Assigned to CP&P Local Offices**

County	Local Office	Type of Referral														Total
			Nov 2016	Dec 2016	Jan 2017	Feb 2017	Mar 2017	Apr 2017	May 2017	Jun 2017	Jul 2017	Aug 2017	Sep 2017	Oct 2017	Nov 2017	
SUSSEX	Sussex	CPS	70	71	71	68	85	52	70	67	52	67	69	80	86	908
		CWS	26	33	30	16	21	22	32	26	20	25	23	26	25	325
		<b>Total</b>	<b>96</b>	<b>104</b>	<b>101</b>	<b>84</b>	<b>106</b>	<b>74</b>	<b>102</b>	<b>93</b>	<b>72</b>	<b>92</b>	<b>92</b>	<b>106</b>	<b>111</b>	<b>1233</b>
	County Totals	CPS	70	71	71	68	85	52	70	67	52	67	69	80	86	908
		<b>Total</b>	<b>96</b>	<b>104</b>	<b>101</b>	<b>84</b>	<b>106</b>	<b>74</b>	<b>102</b>	<b>93</b>	<b>72</b>	<b>92</b>	<b>92</b>	<b>106</b>	<b>111</b>	<b>1233</b>
UNION	Union Central	CPS	82	83	86	75	94	80	87	84	73	72	68	74	84	1042
		CWS	28	25	38	20	31	21	21	35	30	21	40	31	18	359
		<b>Total</b>	<b>110</b>	<b>108</b>	<b>124</b>	<b>95</b>	<b>125</b>	<b>101</b>	<b>108</b>	<b>119</b>	<b>103</b>	<b>93</b>	<b>108</b>	<b>105</b>	<b>102</b>	<b>1401</b>
	Union East	CPS	78	73	98	82	94	82	97	97	55	69	91	88	91	1095
		CWS	33	31	29	25	22	30	35	27	15	15	31	39	26	358
		<b>Total</b>	<b>111</b>	<b>104</b>	<b>127</b>	<b>107</b>	<b>116</b>	<b>112</b>	<b>132</b>	<b>124</b>	<b>70</b>	<b>84</b>	<b>122</b>	<b>127</b>	<b>117</b>	<b>1453</b>
	Union West	CPS	65	62	68	67	87	86	94	57	53	51	86	88	88	952
		CWS	26	32	22	34	33	18	41	35	29	18	29	33	36	386
		<b>Total</b>	<b>91</b>	<b>94</b>	<b>90</b>	<b>101</b>	<b>120</b>	<b>104</b>	<b>135</b>	<b>92</b>	<b>82</b>	<b>69</b>	<b>115</b>	<b>121</b>	<b>124</b>	<b>1338</b>
	County Totals	CPS	225	218	252	224	275	248	278	238	181	192	245	250	263	3089
		CWS	87	88	89	79	86	69	97	97	74	54	100	103	80	1103
		<b>Total</b>	<b>312</b>	<b>306</b>	<b>341</b>	<b>303</b>	<b>361</b>	<b>317</b>	<b>375</b>	<b>335</b>	<b>255</b>	<b>246</b>	<b>345</b>	<b>353</b>	<b>343</b>	<b>4192</b>
WARREN	Warren	CPS	68	57	88	68	68	61	64	68	80	50	83	98	69	922
		CWS	16	22	20	28	27	23	21	31	29	19	34	33	33	336
		<b>Total</b>	<b>84</b>	<b>79</b>	<b>108</b>	<b>96</b>	<b>95</b>	<b>84</b>	<b>85</b>	<b>99</b>	<b>109</b>	<b>69</b>	<b>117</b>	<b>131</b>	<b>102</b>	<b>1258</b>
	County Totals	CPS	68	57	88	68	68	61	64	68	80	50	83	98	69	922
		<b>Total</b>	<b>84</b>	<b>79</b>	<b>108</b>	<b>96</b>	<b>95</b>	<b>84</b>	<b>85</b>	<b>99</b>	<b>109</b>	<b>69</b>	<b>117</b>	<b>131</b>	<b>102</b>	<b>1258</b>
County CPS Referral Total		CPS	4,328	4,448	4,794	4,413	5,003	4,489	5,407	4,531	3,569	3,598	4,407	5,202	4,876	59,065
County CWS Referral Total		CWS	1,494	1,529	1,665	1,464	1,784	1,436	1,868	1,596	1,330	1,266	1,583	1,889	1,713	20,617
County Referral Total		<b>Total</b>	<b>5,822</b>	<b>5,977</b>	<b>6,459</b>	<b>5,877</b>	<b>6,787</b>	<b>5,925</b>	<b>7,275</b>	<b>6,127</b>	<b>4,899</b>	<b>4,864</b>	<b>5,990</b>	<b>7,091</b>	<b>6,589</b>	<b>79,682</b>
Central Region IAIU	CPS	57	59	41	58	54	50	75	67	42	55	54	68	73	753	
	CWS	0	0	0	0	0	0	0	0	0	0	0	0	0	0	
	<b>Total</b>	<b>57</b>	<b>59</b>	<b>41</b>	<b>58</b>	<b>54</b>	<b>50</b>	<b>75</b>	<b>67</b>	<b>42</b>	<b>55</b>	<b>54</b>	<b>68</b>	<b>73</b>	<b>753</b>	
Metro Region IAIU	CPS	48	45	61	54	68	51	69	48	34	25	41	58	48	650	
	CWS	0	0	0	0	0	0	0	0	0	0	0	0	0	0	
	<b>Total</b>	<b>48</b>	<b>45</b>	<b>61</b>	<b>54</b>	<b>68</b>	<b>51</b>	<b>69</b>	<b>48</b>	<b>34</b>	<b>25</b>	<b>41</b>	<b>58</b>	<b>48</b>	<b>650</b>	
Northern Region IAIU	CPS	70	52	65	58	68	48	87	49	47	34	51	70	58	757	
	CWS	0	0	0	0	0	0	0	0	0	0	0	0	0	0	
	<b>Total</b>	<b>70</b>	<b>52</b>	<b>65</b>	<b>58</b>	<b>68</b>	<b>48</b>	<b>87</b>	<b>49</b>	<b>47</b>	<b>34</b>	<b>51</b>	<b>70</b>	<b>58</b>	<b>757</b>	
Southern Region IAIU	CPS	88	79	76	71	87	76	108	80	50	63	66	102	77	1,023	
	CWS	1	0	0	0	0	0	0	0	0	0	0	0	0	1	
	<b>Total</b>	<b>89</b>	<b>79</b>	<b>76</b>	<b>71</b>	<b>87</b>	<b>76</b>	<b>108</b>	<b>80</b>	<b>50</b>	<b>63</b>	<b>66</b>	<b>102</b>	<b>77</b>	<b>1,024</b>	
IAIU CPS Subtotal		CPS	263	235	243	241	277	225	339	244	173	177	212	298	256	3,183
IAIU CWS Subtotal		CWS	1	0	0	0	0	0	0	0	0	0	0	0	1	
IAIU Subtotal		<b>Total</b>	<b>264</b>	<b>235</b>	<b>243</b>	<b>241</b>	<b>277</b>	<b>225</b>	<b>339</b>	<b>244</b>	<b>173</b>	<b>177</b>	<b>212</b>	<b>298</b>	<b>256</b>	<b>3,184</b>
County and IAIU CPS Subtotal		CPS	4,591	4,683	5,037	4,654	5,280	4,714	5,746	4,775	3,742	3,775	4,619	5,500	5,132	62,248
County and IAIU CWS Subtotal		CWS	1,495	1,529	1,665	1,464	1,784	1,436	1,868	1,596	1,330	1,266	1,583	1,889	1,713	20,618
Unable to Determine <sup>(1)</sup>		<b>Total</b>	<b>143</b>	<b>129</b>	<b>113</b>	<b>100</b>	<b>126</b>	<b>127</b>	<b>152</b>	<b>146</b>	<b>129</b>	<b>163</b>	<b>158</b>	<b>187</b>	<b>129</b>	<b>1,802</b>
Other Offices		<b>Total</b>	<b>0</b>	<b>1</b>	<b>4</b>	<b>2</b>	<b>2</b>	<b>3</b>	<b>0</b>	<b>1</b>	<b>2</b>	<b>2</b>	<b>3</b>	<b>2</b>	<b>24</b>	
Grand Total		<b>Total</b>	<b>6,229</b>	<b>6,342</b>	<b>6,819</b>	<b>6,220</b>	<b>7,192</b>	<b>6,280</b>	<b>7,766</b>	<b>6,518</b>	<b>5,203</b>	<b>5,206</b>	<b>6,362</b>	<b>7,579</b>	<b>6,976</b>	<b>84,692</b>

<sup>(1)</sup>CPS Reports or CWS Referrals not assigned to an office through the Assignment Designee, but were assigned to an office for an assessment or investigation.