



## **Child Protection and Permanency**

# **Monthly Screening and Investigation Report November 2018**

Christine Norbut Beyer, MSW  
Commissioner

December 10, 2018



NEW JERSEY DEPARTMENT OF  
CHILDREN AND FAMILIES

## Table of Contents

Table 1: NJ State Central Registry Activity: Monthly Child Abuse and Neglect Hotline Calls, Intakes and Assignments to Child Protection & Permanency (CP&P) Offices

---

Chart 1: CP&P Annual Trends in Child Protection Services (CPS) Reports and Child Welfare Services (CWS) Referrals

---

Table 2: Assignments to CP&P Offices: CPS Reports and CWS Referrals

---

Table 3: Source of CPS Reports and CWS Referrals

---

Table 4: Monthly Count of CPS Reports and CWS Referrals Assigned to Counties

---

Table 5: Monthly Count of CPS Reports and CWS Referrals Assigned to CP&P Local Offices

---

**Table 1: NJ State Central Registry Activity: Monthly Child Abuse and Neglect Hotline Calls, Intakes and Assignments to CP&P Offices<sup>1,2,7</sup>**

2017 - 2018	Hotline Call Activity				Intakes Recorded in NJ SPIRIT <sup>6,8</sup>												Assignments to CP&P Offices				
	Total Calls to SCR <sup>3</sup>	Abandon Calls <sup>4</sup>	Average Time to Answer (seconds)	Resulting NJS Intakes <sup>5</sup>	CPS Reports		CWS Referrals		No Action Required (NAR)		Related Information (RI)		Information & Referral (I&R)		Information Only (IO)		CPS Reports		CWS Referrals		Total
					n	%	n	%	n	%	n	%	n	%	n	%	n	%	n	%	
November 2017	14,446	672	43	15,694	5,223	33.3%	1,750	11.2%	235	1.5%	4,246	27.1%	1,680	10.7%	2,560	16.3%	5,223	74.9%	1,753	25.1%	6,976
December 2017	13,005	560	38	14,194	4,601	32.4%	1,594	11.2%	220	1.5%	3,843	27.1%	1,724	12.1%	2,212	15.6%	4,601	74.3%	1,594	25.7%	6,195
January 2018	14,876	952	60	15,833	5,276	33.3%	1,784	11.3%	242	1.5%	4,346	27.4%	1,755	11.1%	2,430	15.3%	5,276	74.7%	1,784	25.3%	7,060
February 2018	13,558	727	54	14,638	4,933	33.7%	1,643	11.2%	251	1.7%	3,807	26.0%	1,740	11.9%	2,264	15.5%	4,933	75.0%	1,644	25.0%	6,577
March 2018	14,714	804	55	15,869	5,212	32.8%	1,727	10.9%	288	1.8%	4,187	26.4%	1,855	11.7%	2,600	16.4%	5,212	75.1%	1,727	24.9%	6,939
April 2018	14,148	727	54	15,227	5,275	34.6%	1,603	10.5%	252	1.7%	3,952	26.0%	1,818	11.9%	2,327	15.3%	5,275	76.7%	1,601	23.3%	6,876
May 2018	15,956	1,482	69	16,668	5,920	35.5%	1,833	11.0%	316	1.9%	4,104	24.6%	1,997	12.0%	2,498	15.0%	5,920	76.3%	1,836	23.7%	7,756
June 2018	13,796	1,021	72	14,490	4,948	34.1%	1,614	11.1%	264	1.8%	3,662	25.3%	1,693	11.7%	2,309	15.9%	4,948	75.4%	1,615	24.6%	6,563
July 2018	11,406	407	35	12,497	4,011	32.1%	1,307	10.5%	214	1.7%	3,387	27.1%	1,374	11.0%	2,204	17.6%	4,011	75.4%	1,308	24.6%	5,319
August 2018	11,633	460	43	12,708	4,102	32.3%	1,409	11.1%	252	2.0%	3,455	27.2%	1,307	10.3%	2,183	17.2%	4,102	74.4%	1,408	25.6%	5,510
September 2018	13,554	925	64	14,277	4,748	33.3%	1,632	11.4%	217	1.5%	3,914	27.4%	1,448	10.1%	2,318	16.2%	4,748	74.4%	1,634	25.6%	6,382
October 2018	15,489	904	68	16,470	5,790	35.2%	2,008	12.2%	260	1.6%	4,103	24.9%	1,827	11.1%	2,482	15.1%	5,790	74.2%	2,011	25.8%	7,801
<b>November 2018</b>	<b>13,533</b>	<b>1,111</b>	<b>80</b>	<b>14,067</b>	<b>4,973</b>	<b>35.4%</b>	<b>1,621</b>	<b>11.5%</b>	<b>210</b>	<b>1.5%</b>	<b>3,749</b>	<b>26.7%</b>	<b>1,453</b>	<b>10.3%</b>	<b>2,061</b>	<b>14.7%</b>	<b>4,973</b>	<b>75.4%</b>	<b>1,620</b>	<b>24.6%</b>	<b>6,593</b>
	<b>13,855</b>	<b>827</b>	<b>57</b>	<b>14,818</b>	<b>5,001</b>	<b>33.7%</b>	<b>1,656</b>	<b>11.2%</b>	<b>248</b>	<b>1.7%</b>	<b>3,904</b>	<b>26.3%</b>	<b>1,667</b>	<b>11.2%</b>	<b>2,342</b>	<b>15.8%</b>	<b>5,001</b>	<b>75.1%</b>	<b>1,657</b>	<b>24.9%</b>	<b>6,657</b>
<b>Overall Total</b>	<b>180,114</b>	<b>10,752</b>		<b>192,632</b>	<b>65,012</b>		<b>21,525</b>		<b>3,221</b>		<b>50,755</b>		<b>21,671</b>		<b>30,448</b>		<b>65,012</b>	<b>75.1%</b>	<b>21,535</b>	<b>24.9%</b>	<b>86,547</b>

<sup>1</sup>Comes from three distinct sources: (1) the Automatic Call Distribution (ACD) phone system; which keeps a count of the number of calls and call routing; (2) Monthly NJSpirit Intakes; which record decision making on calls received by hotline screeners, and (3) NJSpirit extracts of assigned CWS Referrals and CPS Reports.

<sup>2</sup>The number of Intakes, CPS Reports, and CWS Referrals are based on an extract from NJSpirit. Data extracted by the Office of Research, Evaluation, and Reporting on **December 10, 2018** includes all Intakes, CPS Reports, and CWS Referrals received from **November 1, 2018 through November 30, 2018**.

<sup>3</sup>The number calls received through the ACD System that were directed to a screener from any call-in phone number.

<sup>4</sup>The number of calls received through the ACD System that are abandoned either while waiting in queue or while ringing.

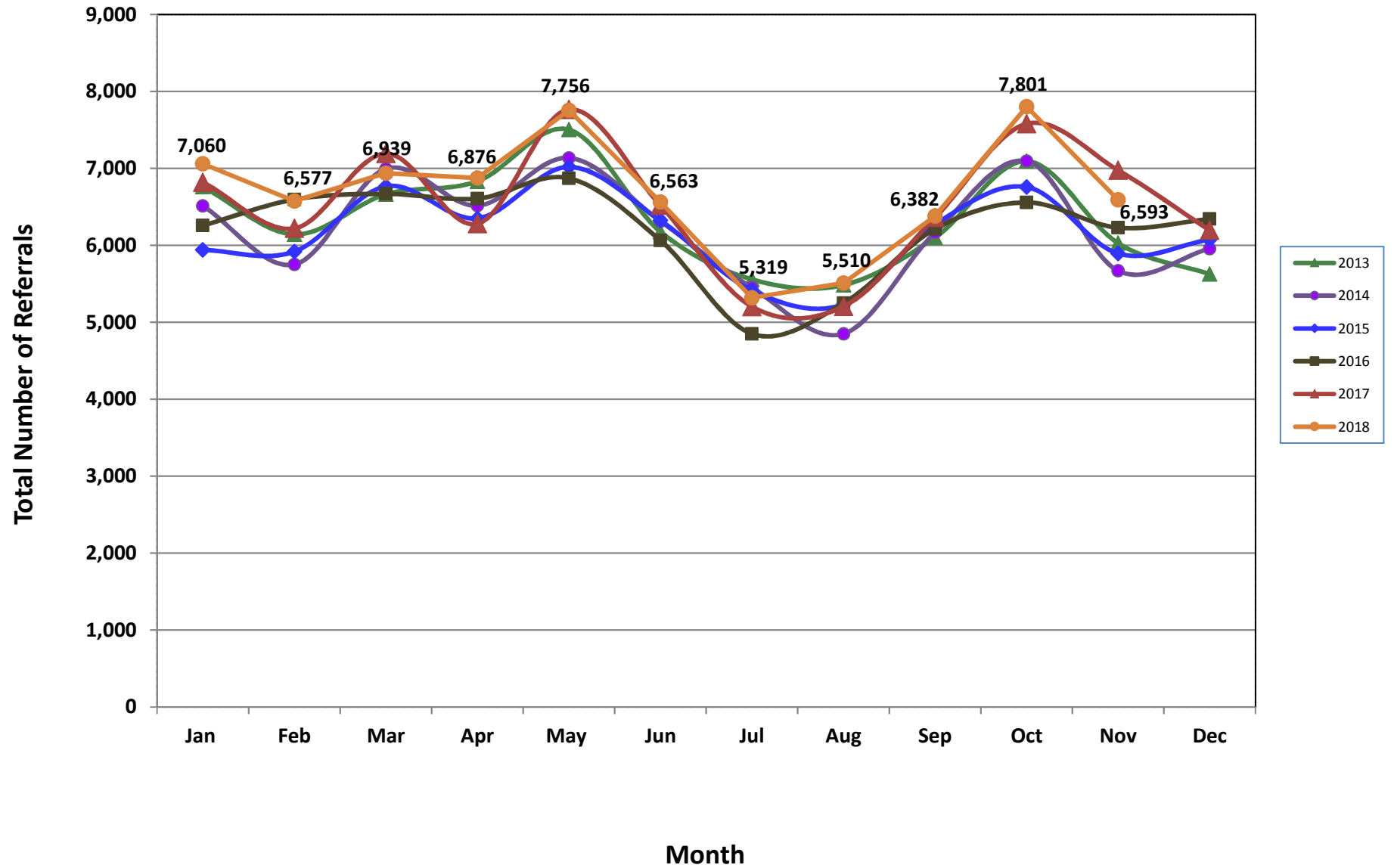
<sup>5</sup>The number of Intakes entered in NJSpirit from the number of calls received.

<sup>6</sup>The number of Intakes recorded in NJSpirit, by type of Intake. There is not a one-to-one relationship between an ACD call and an Intake; multiple calls to State Central Registry (SCR) may result in a single Intake, or one call may result in multiple Intakes.

<sup>7</sup>Intake: The process of documenting: a report of alleged abuse or neglect of a child (CPS); a request for services on behalf of a child, or a referral of a child for services (CWS); a call in which the caller provides additional or clarifying information about a current service case or active investigation (RI); informing a caller of, or referring a caller to, services available from other private or public sources (I&R); a call that requires no action by CP&P (NAR); or a response to a simple inquiry (IO).

<sup>8</sup>NJ SPIRIT: NJ Statewide Protection Investigation and Reporting Information Tool case management system

### CP&P Annual Trends in CPS Reports and CWS Referrals



**Table 2: Assignments to CP&P Offices: CPS Reports and CWS Referrals<sup>1</sup>**

Intake Date <sup>3</sup>		CPS Reports <sup>2</sup>	CWS Referrals <sup>2</sup>	Total Assignments <sup>2</sup>
2013	Jan 2013	5,464	1,296	6,760
	Feb 2013	4,966	1,177	6,143
	Mar 2013	5,355	1,309	6,664
	Apr 2013	5,430	1,402	6,832
	May 2013	5,993	1,510	7,503
	Jun 2013	4,947	1,230	6,177
	Jul 2013	4,330	1,228	5,558
	Aug 2013	4,330	1,155	5,485
	Sep 2013	4,851	1,251	6,102
	Oct 2013	5,614	1,481	7,095
	Nov 2013	4,694	1,334	6,028
	Dec 2013	4,397	1,229	5,626
	<b>Total</b>	<b>60,371</b>	<b>15,602</b>	<b>75,973</b>
2014	Jan 2014	5,097	1,416	6,513
	Feb 2014	4,457	1,295	5,752
	Mar 2014	5,408	1,586	6,994
	Apr 2014	5,049	1,467	6,516
	May 2014	5,501	1,635	7,136
	Jun 2014	4,796	1,517	6,313
	Jul 2014	4,202	1,247	5,449
	Aug 2014	3,629	1,222	4,851
	Sep 2014	4,668	1,498	6,166
	Oct 2014	5,509	1,586	7,095
	Nov 2014	4,254	1,416	5,670
	Dec 2014	4,509	1,447	5,956
	<b>Total</b>	<b>57,079</b>	<b>17,332</b>	<b>74,411</b>
2015	Jan 2015	4,549	1,391	5,940
	Feb 2015	4,574	1,345	5,919
	Mar 2015	5,187	1,580	6,767
	Apr 2015	4,967	1,384	6,351
	May 2015	5,457	1,561	7,018
	Jun 2015	4,887	1,436	6,323
	Jul 2015	4,140	1,273	5,413
	Aug 2015	3,978	1,256	5,234
	Sep 2015	4,776	1,495	6,271
	Oct 2015	5,139	1,619	6,758
	Nov 2015	4,417	1,477	5,894
	Dec 2015	4,530	1,544	6,074
	<b>Total</b>	<b>56,601</b>	<b>17,361</b>	<b>73,962</b>

**Table 2: Assignments to CP&P Offices: CPS Reports and CWS Referrals<sup>1</sup>**

Intake Date <sup>3</sup>		CPS Reports <sup>2</sup>	CWS Referrals <sup>2</sup>	Total Assignments <sup>2</sup>
2016	Jan 2016	4,686	1,571	6,257
	Feb 2016	4,974	1,622	6,596
	Mar 2016	5,000	1,669	6,669
	Apr 2016	5,065	1,542	6,607
	May 2016	5,238	1,633	6,871
	Jun 2016	4,602	1,461	6,063
	Jul 2016	3,663	1,187	4,850
	Aug 2016	3,941	1,307	5,248
	Sep 2016	4,654	1,559	6,213
	Oct 2016	4,935	1,622	6,557
	Nov 2016	4,677	1,552	6,229
	Dec 2016	4,762	1,580	6,342
	<b>Total</b>	<b>56,197</b>	<b>18,305</b>	<b>74,502</b>
2017	Jan 2017	5,111	1,708	6,819
	Feb 2017	4,716	1,504	6,220
	Mar 2017	5,349	1,843	7,192
	Apr 2017	4,790	1,490	6,280
	May 2017	5,847	1,919	7,766
	Jun 2017	4,853	1,665	6,518
	Jul 2017	3,814	1,389	5,203
	Aug 2017	3,866	1,340	5,206
	Sep 2017	4,719	1,643	6,362
	Oct 2017	5,613	1,966	7,579
	Nov 2017	5,223	1,753	6,976
	Dec 2017	4,601	1,594	6,195
	<b>Total</b>	<b>58,502</b>	<b>19,814</b>	<b>78,316</b>
2018	Jan 2018	5,276	1,784	7,060
	Feb 2018	4,933	1,644	6,577
	Mar 2018	5,212	1,727	6,939
	Apr 2018	5,275	1,601	6,876
	May 2018	5,920	1,836	7,756
	Jun 2018	4,948	1,615	6,563
	Jul 2018	4,011	1,308	5,319
	Aug 2018	4,102	1,408	5,510
	Sep 2018	4,748	1,634	6,382
	Oct 2018	5,790	2,011	7,801
	Nov 2018	4,973	1,620	6,593
	<b>Total</b>	<b>55,188</b>	<b>18,188</b>	<b>73,376</b>
<b>Grand Total</b>		<b>343,938</b>	<b>106,602</b>	<b>450,540</b>

<sup>1</sup>Source of Data: NJ SPIRIT

<sup>2</sup>A CPS Report or a CWS Referral may include multiple children in a family, with one or more allegation or request for services. In these cases, each CPS Report or CWS Referral is counted once - the CPS Report or the CWS Referral is the unit of analysis rather than the child.

<sup>3</sup>Prior to January 2014, the number of CPS Reports and CWS Referrals was based on the type of assignment of the CPS Report or CWS Referral. Beginning in January 2014, the number of CPS Reports and CWS Referrals is based on the number of CPS Reports and CWS Referrals received.

**Table 3: Source of CPS Reports and CWS Referrals**

	Source	Nov 2017	Dec 2017	Jan 2018	Feb 2018	Mar 2018	Apr 2018	May 2018	Jun 2018	Jul 2018	Aug 2018	Sep 2018	Oct 2018	Nov 2018		13 Month Total	
CPS Reports and CWS Referrals	School Staff	1851	1622	1932	1970	1969	1783	2213	1243	184	118	1237	2256	1769	27%	20,147	23%
	Healthcare Provider	953	848	1003	809	931	932	994	885	904	920	928	1018	954	14%	12,079	14%
	Law Enforcement	1130	988	1018	1001	1149	1179	1264	1220	1238	1201	1251	1188	1186	18%	15,013	17%
	Government Agency	399	408	392	410	466	417	446	441	436	468	428	521	430	7%	5,662	7%
	Parent	571	487	569	468	469	509	548	574	573	590	569	563	491	7%	6,981	8%
	Relative/Friend/Neighbor	493	396	531	394	440	475	496	517	475	488	475	452	370	6%	6,002	7%
	Anonymous	641	595	602	623	641	628	789	683	538	573	565	769	576	9%	8,223	10%
	CP&P	107	129	125	121	107	130	143	140	115	142	106	131	99	2%	1,595	2%
	Court/Legal	116	135	130	130	131	158	164	154	143	193	141	171	101	2%	1,867	2%
	Community Group/Individual	299	265	318	289	294	325	290	301	290	317	301	301	264	4%	3,854	4%
	Facility Staff (incl Correctional Facility)	75	46	85	70	72	68	97	64	101	135	103	97	86	1%	1,099	1%
	Child (Self)	41	25	49	33	41	38	34	49	38	53	35	51	30	0%	517	1%
	Other	273	237	294	242	207	217	261	272	267	289	228	262	218	3%	3,267	4%
	Daycare/Babysitter	27	14	12	17	22	17	17	20	17	23	15	21	19	0%	241	0%
<b>Total</b>		<b>6,976</b>	<b>6,195</b>	<b>7,060</b>	<b>6,577</b>	<b>6,939</b>	<b>6,876</b>	<b>7,756</b>	<b>6,563</b>	<b>5,319</b>	<b>5,510</b>	<b>6,382</b>	<b>7,801</b>	<b>6,593</b>		<b>86,547</b>	

**Table 4: Monthly Count of CPS Reports and CWS Referrals Assigned to Counties**

County														Average Number of Assignments Last 13 Months	Oct 18 to Nov 18 Numerical Difference
	Nov 2017	Dec 2017	Jan 2018	Feb 2018	Mar 2018	Apr 2018	May 2018	Jun 2018	Jul 2018	Aug 2018	Sep 2018	Oct 2018	Nov 2018		
Atlantic	253	221	291	208	267	260	326	284	213	231	295	280	264	261	-16
Bergen	418	416	394	371	458	374	474	354	291	243	333	467	412	385	-55
Burlington	343	294	315	307	290	312	302	304	284	246	270	348	313	302	-35
Camden	576	535	634	526	559	562	643	564	472	485	543	606	515	555	-91
Cape May	84	77	82	73	68	95	100	97	80	85	109	87	73	85	-14
Cumberland	213	193	250	174	223	265	266	202	159	205	225	232	204	216	-28
Essex	721	665	787	695	778	770	811	713	545	622	666	859	712	719	-147
Gloucester	267	252	268	219	239	272	298	231	200	229	215	260	235	245	-25
Hudson	454	418	439	386	466	454	509	412	330	342	426	540	420	430	-120
Hunterdon	50	60	60	54	58	67	62	56	48	49	57	75	58	58	-17
Mercer	298	232	264	262	262	295	330	274	223	247	231	365	298	275	-67
Middlesex	525	419	540	463	498	473	534	474	358	366	433	563	426	467	-137
Monmouth	381	327	413	384	427	376	446	341	302	277	410	426	380	376	-46
Morris	250	219	269	191	245	240	256	199	204	186	215	292	224	230	-68
Ocean	418	356	411	364	420	397	427	398	357	371	386	482	450	403	-32
Passaic	513	421	451	456	469	448	571	423	307	383	421	567	461	453	-106
Salem	100	80	90	68	99	92	90	79	65	77	104	90	72	85	-18
Somerset	169	172	156	157	179	174	180	189	141	128	155	200	181	168	-19
Sussex	111	92	126	90	102	124	112	118	82	82	99	120	81	103	-39
Union	343	324	361	366	352	321	379	343	260	221	328	396	351	334	-45
Warren	102	72	94	101	117	108	117	110	87	105	118	105	93	102	-12
<b>County Subtotals</b>	<b>6,589</b>	<b>5,845</b>	<b>6,695</b>	<b>5,915</b>	<b>6,576</b>	<b>6,479</b>	<b>7,233</b>	<b>6,165</b>	<b>5,008</b>	<b>5,180</b>	<b>6,039</b>	<b>7,360</b>	<b>6,223</b>	<b>6,254</b>	<b>-1,137</b>
Central Region IAIU	73	55	62	58	63	62	89	64	40	57	39	67	63	61	-4
Metro Region IAIU	48	56	54	63	48	52	78	60	40	38	50	65	61	55	-4
Northern Region IAIU	58	54	60	53	53	69	88	60	42	34	63	71	70	60	-1
Southern Region IAIU	77	84	90	75	74	86	95	71	61	76	67	100	58	78	-42
<b>IAIU Subtotals</b>	<b>256</b>	<b>249</b>	<b>266</b>	<b>249</b>	<b>238</b>	<b>269</b>	<b>350</b>	<b>255</b>	<b>183</b>	<b>205</b>	<b>219</b>	<b>303</b>	<b>252</b>	<b>253</b>	<b>-51</b>
<b>Unable to Determine<sup>1</sup></b>	<b>129</b>	<b>98</b>	<b>94</b>	<b>407</b>	<b>122</b>	<b>125</b>	<b>169</b>	<b>137</b>	<b>128</b>	<b>122</b>	<b>123</b>	<b>135</b>	<b>117</b>	<b>147</b>	<b>-18</b>
<b>Other Offices</b>	<b>2</b>	<b>3</b>	<b>5</b>	<b>6</b>	<b>3</b>	<b>3</b>	<b>4</b>	<b>6</b>	<b>0</b>	<b>3</b>	<b>1</b>	<b>3</b>	<b>1</b>	<b>3</b>	<b>-2</b>
<b>Grand Total</b>	<b>6,976</b>	<b>6,195</b>	<b>7,060</b>	<b>6,577</b>	<b>6,939</b>	<b>6,876</b>	<b>7,756</b>	<b>6,563</b>	<b>5,319</b>	<b>5,510</b>	<b>6,382</b>	<b>7,801</b>	<b>6,593</b>	<b>6,657</b>	<b>-1208</b>

<sup>1</sup>CPS Reports or CWS Referrals not assigned to an office through the Assignment Designee, but were assigned to an office for an assessment or investigation.



**Table 5: Monthly Count of CPS Reports and CWS Referrals Assigned to CP&P Local Offices**

County	Local Office	Type of Referral	Nov 2017	Dec 2017	Jan 2018	Feb 2018	Mar 2018	Apr 2018	May 2018	Jun 2018	Jul 2018	Aug 2018	Sep 2018	Oct 2018	Nov 2018	Total
ATLANTIC	Atlantic East	CPS	99	94	127	95	131	118	157	132	97	106	132	132	139	1,559
		CWS	51	33	36	29	28	32	40	49	31	46	43	50	40	508
		<b>Total</b>	<b>150</b>	<b>127</b>	<b>163</b>	<b>124</b>	<b>159</b>	<b>150</b>	<b>197</b>	<b>181</b>	<b>128</b>	<b>152</b>	<b>175</b>	<b>182</b>	<b>179</b>	<b>2,067</b>
	Atlantic West	CPS	79	75	94	68	75	88	98	74	68	60	89	80	73	1,021
		CWS	24	19	34	16	33	22	31	29	17	19	31	18	12	305
		<b>Total</b>	<b>103</b>	<b>94</b>	<b>128</b>	<b>84</b>	<b>108</b>	<b>110</b>	<b>129</b>	<b>103</b>	<b>85</b>	<b>79</b>	<b>120</b>	<b>98</b>	<b>85</b>	<b>1,326</b>
	County Totals	CPS	178	169	221	163	206	206	255	206	165	166	221	212	212	2,580
		CWS	75	52	70	45	61	54	71	78	48	65	74	68	52	813
		<b>Total</b>	<b>253</b>	<b>221</b>	<b>291</b>	<b>208</b>	<b>267</b>	<b>260</b>	<b>326</b>	<b>284</b>	<b>213</b>	<b>231</b>	<b>295</b>	<b>280</b>	<b>264</b>	<b>3,393</b>
BERGEN	Bergen Central	CPS	140	128	138	112	144	122	141	112	76	59	88	147	103	1,510
		CWS	47	48	40	44	54	37	58	52	32	25	44	60	51	592
		<b>Total</b>	<b>187</b>	<b>176</b>	<b>178</b>	<b>156</b>	<b>198</b>	<b>159</b>	<b>199</b>	<b>164</b>	<b>108</b>	<b>84</b>	<b>132</b>	<b>207</b>	<b>154</b>	<b>2,102</b>
	Bergen South	CPS	167	177	154	163	198	144	199	119	136	112	152	187	188	2,096
		CWS	64	63	62	52	62	71	76	71	47	47	49	73	70	807
		<b>Total</b>	<b>231</b>	<b>240</b>	<b>216</b>	<b>215</b>	<b>260</b>	<b>215</b>	<b>275</b>	<b>190</b>	<b>183</b>	<b>159</b>	<b>201</b>	<b>260</b>	<b>258</b>	<b>2,903</b>
	County Totals	CPS	307	305	292	275	342	266	340	231	212	171	240	334	291	3,606
		CWS	111	111	102	96	116	108	134	123	79	72	93	133	121	1,399
		<b>Total</b>	<b>418</b>	<b>416</b>	<b>394</b>	<b>371</b>	<b>458</b>	<b>374</b>	<b>474</b>	<b>354</b>	<b>291</b>	<b>243</b>	<b>333</b>	<b>467</b>	<b>412</b>	<b>5,005</b>
BURLINGTON	Burlington East	CPS	137	101	129	110	118	116	104	115	117	93	93	131	124	1,488
		CWS	43	38	39	46	35	36	46	45	37	33	31	53	38	520
		<b>Total</b>	<b>180</b>	<b>139</b>	<b>168</b>	<b>156</b>	<b>153</b>	<b>152</b>	<b>150</b>	<b>160</b>	<b>154</b>	<b>126</b>	<b>124</b>	<b>184</b>	<b>162</b>	<b>2,008</b>
	Burlington West	CPS	117	99	108	117	105	108	120	114	100	83	113	124	121	1,429
		CWS	46	56	39	34	32	52	32	30	30	37	33	40	30	491
		<b>Total</b>	<b>163</b>	<b>155</b>	<b>147</b>	<b>151</b>	<b>137</b>	<b>160</b>	<b>152</b>	<b>144</b>	<b>130</b>	<b>120</b>	<b>146</b>	<b>164</b>	<b>151</b>	<b>1,920</b>
	County Totals	CPS	254	200	237	227	223	224	224	229	217	176	206	255	245	2,917
		CWS	89	94	78	80	67	88	78	75	67	70	64	93	68	1,011
		<b>Total</b>	<b>343</b>	<b>294</b>	<b>315</b>	<b>307</b>	<b>290</b>	<b>312</b>	<b>302</b>	<b>304</b>	<b>284</b>	<b>246</b>	<b>270</b>	<b>348</b>	<b>313</b>	<b>3,928</b>
CAMDEN	Camden Central	CPS	129	122	157	108	126	111	141	109	113	109	103	116	110	1,554
		CWS	41	51	31	30	39	32	47	33	27	27	36	41	27	462
		<b>Total</b>	<b>170</b>	<b>173</b>	<b>188</b>	<b>138</b>	<b>165</b>	<b>143</b>	<b>188</b>	<b>142</b>	<b>140</b>	<b>136</b>	<b>139</b>	<b>157</b>	<b>137</b>	<b>2,016</b>
	Camden East	CPS	118	100	116	99	129	139	127	113	99	99	106	110	103	1,458
		CWS	46	27	39	37	32	30	30	41	32	36	44	39	29	462
		<b>Total</b>	<b>164</b>	<b>127</b>	<b>155</b>	<b>136</b>	<b>161</b>	<b>169</b>	<b>157</b>	<b>154</b>	<b>131</b>	<b>135</b>	<b>150</b>	<b>149</b>	<b>132</b>	<b>1,920</b>
	Camden North	CPS	109	82	118	114	105	106	120	115	80	74	91	119	94	1,327
		CWS	31	35	50	24	34	25	41	44	26	33	34	42	31	450
		<b>Total</b>	<b>140</b>	<b>117</b>	<b>168</b>	<b>138</b>	<b>139</b>	<b>131</b>	<b>161</b>	<b>159</b>	<b>106</b>	<b>107</b>	<b>125</b>	<b>161</b>	<b>125</b>	<b>1,777</b>
	Camden South	CPS	74	85	89	79	75	100	113	86	72	85	98	108	89	1,153
		CWS	28	33	34	35	19	19	24	23	23	22	31	31	32	354
		<b>Total</b>	<b>102</b>	<b>118</b>	<b>123</b>	<b>114</b>	<b>94</b>	<b>119</b>	<b>137</b>	<b>109</b>	<b>95</b>	<b>107</b>	<b>129</b>	<b>139</b>	<b>121</b>	<b>1,507</b>
	County Totals	CPS	430	389	480	400	435	456	501	423	364	367	398	453	396	5,492
		CWS	146	146	154	126	124	106	142	141	108	118	145	153	119	1,728
		<b>Total</b>	<b>576</b>	<b>535</b>	<b>634</b>	<b>526</b>	<b>559</b>	<b>562</b>	<b>643</b>	<b>564</b>	<b>472</b>	<b>485</b>	<b>543</b>	<b>606</b>	<b>515</b>	<b>7,220</b>
CAPE MAY	Cape May	CPS	61	58	64	47	46	69	81	76	60	73	89	64	56	844
		CWS	23	19	18	26	22	26	19	21	20	12	20	23	17	266
		<b>Total</b>	<b>84</b>	<b>77</b>	<b>82</b>	<b>73</b>	<b>68</b>	<b>95</b>	<b>100</b>	<b>97</b>	<b>80</b>	<b>85</b>	<b>109</b>	<b>87</b>	<b>73</b>	<b>1,110</b>
	County Totals	CPS	61	58	64	47	46	69	81	76	60	73	89	64	56	844
		CWS	23	19	18	26	22	26	19	21	20	12	20	23	17	266
		<b>Total</b>	<b>84</b>	<b>77</b>	<b>82</b>	<b>73</b>	<b>68</b>	<b>95</b>	<b>100</b>	<b>97</b>	<b>80</b>	<b>85</b>	<b>109</b>	<b>87</b>	<b>73</b>	<b>1,110</b>
CUMBERLAND	Cumberland East	CPS	48	44	62	36	55	60	56	58	47	44	60	55	47	672
		CWS	13	22	16	17	18	18	17	15	15	13	15	18	15	212
		<b>Total</b>	<b>61</b>	<b>66</b>	<b>78</b>	<b>53</b>	<b>73</b>	<b>78</b>	<b>73</b>	<b>73</b>	<b>62</b>	<b>57</b>	<b>75</b>	<b>73</b>	<b>62</b>	<b>884</b>
	Cumberland West	CPS	113	101	146	92	126	146	146	111	82	118	118	116	106	1,521
		CWS	39	26	26	29	24	41	47	18	15	30	32	43	36	406
		<b>Total</b>	<b>152</b>	<b>127</b>	<b>172</b>	<b>121</b>	<b>150</b>	<b>187</b>	<b>193</b>	<b>129</b>	<b>97</b>	<b>148</b>	<b>150</b>	<b>159</b>	<b>142</b>	<b>1,927</b>
	County Totals	CPS	161	145	208	128	181	206	202	169	129	162	178	171	153	2,193
		CWS	52	48	42	46	42	59	64	33	30	43	47	61	51	618
		<b>Total</b>	<b>213</b>	<b>193</b>	<b>250</b>	<b>174</b>	<b>223</b>	<b>265</b>	<b>266</b>	<b>202</b>	<b>159</b>	<b>205</b>	<b>225</b>	<b>232</b>	<b>204</b>	<b>2,811</b>

**Table 5: Monthly Count of CPS Reports and CWS Referrals Assigned to CP&P Local Offices**

County	Local Office	Type of Referral	Month													Total
			Nov 2017	Dec 2017	Jan 2018	Feb 2018	Mar 2018	Apr 2018	May 2018	Jun 2018	Jul 2018	Aug 2018	Sep 2018	Oct 2018	Nov 2018	
ESSEX	Essex Central	CPS	108	79	93	77	107	103	113	95	70	92	68	97	103	1,205
		CWS	33	28	42	22	35	36	39	23	21	23	41	35	35	413
		<b>Total</b>	<b>141</b>	<b>107</b>	<b>135</b>	<b>99</b>	<b>142</b>	<b>139</b>	<b>152</b>	<b>118</b>	<b>91</b>	<b>115</b>	<b>109</b>	<b>132</b>	<b>138</b>	<b>1,618</b>
	Essex North	CPS	67	64	80	71	75	70	83	62	41	61	65	82	74	895
		CWS	31	25	25	21	34	24	24	35	18	15	28	31	25	336
		<b>Total</b>	<b>98</b>	<b>89</b>	<b>105</b>	<b>92</b>	<b>109</b>	<b>94</b>	<b>107</b>	<b>97</b>	<b>59</b>	<b>76</b>	<b>93</b>	<b>113</b>	<b>99</b>	<b>1,231</b>
	Essex South	CPS	68	72	83	64	63	83	65	92	46	76	63	80	70	925
		CWS	20	28	18	30	21	20	24	25	27	17	28	44	24	326
		<b>Total</b>	<b>88</b>	<b>100</b>	<b>101</b>	<b>94</b>	<b>84</b>	<b>103</b>	<b>89</b>	<b>117</b>	<b>73</b>	<b>93</b>	<b>91</b>	<b>124</b>	<b>94</b>	<b>1,251</b>
	Newark Center City	CPS	98	104	107	86	105	88	105	91	75	81	102	123	91	1,256
		CWS	34	18	34	35	34	38	42	33	26	26	27	44	36	427
		<b>Total</b>	<b>132</b>	<b>122</b>	<b>141</b>	<b>121</b>	<b>139</b>	<b>126</b>	<b>147</b>	<b>124</b>	<b>101</b>	<b>107</b>	<b>129</b>	<b>167</b>	<b>127</b>	<b>1,683</b>
	Newark Northeast	CPS	106	76	107	97	97	99	104	81	71	84	76	117	105	1,220
		CWS	34	30	44	39	44	38	40	42	24	35	29	58	30	487
		<b>Total</b>	<b>140</b>	<b>106</b>	<b>151</b>	<b>136</b>	<b>141</b>	<b>137</b>	<b>144</b>	<b>123</b>	<b>95</b>	<b>119</b>	<b>105</b>	<b>175</b>	<b>135</b>	<b>1,707</b>
Newark South	CPS	93	103	116	111	116	128	138	106	95	76	93	111	92	1,378	
	CWS	29	38	38	42	47	43	34	28	31	36	46	37	27	476	
	<b>Total</b>	<b>122</b>	<b>141</b>	<b>154</b>	<b>153</b>	<b>163</b>	<b>171</b>	<b>172</b>	<b>134</b>	<b>126</b>	<b>112</b>	<b>139</b>	<b>148</b>	<b>119</b>	<b>1,854</b>	
County Totals	CPS	540	498	586	506	563	571	608	527	398	470	467	610	535	6,879	
	CWS	181	167	201	189	215	199	203	186	147	152	199	249	177	2,465	
	<b>Total</b>	<b>721</b>	<b>665</b>	<b>787</b>	<b>695</b>	<b>778</b>	<b>770</b>	<b>811</b>	<b>713</b>	<b>545</b>	<b>622</b>	<b>666</b>	<b>859</b>	<b>712</b>	<b>9,344</b>	
GLOUCESTER	Gloucester East	CPS	89	96	94	85	79	113	118	79	75	76	86	104	85	1,179
		CWS	34	30	35	22	24	41	26	18	20	31	22	41	25	369
		<b>Total</b>	<b>123</b>	<b>126</b>	<b>129</b>	<b>107</b>	<b>103</b>	<b>154</b>	<b>144</b>	<b>97</b>	<b>95</b>	<b>107</b>	<b>108</b>	<b>145</b>	<b>110</b>	<b>1,548</b>
	Gloucester West	CPS	113	100	105	93	100	96	118	100	82	101	79	92	95	1,274
		CWS	31	26	34	19	36	22	36	34	23	21	28	23	30	363
		<b>Total</b>	<b>144</b>	<b>126</b>	<b>139</b>	<b>112</b>	<b>136</b>	<b>118</b>	<b>154</b>	<b>134</b>	<b>105</b>	<b>122</b>	<b>107</b>	<b>115</b>	<b>125</b>	<b>1,637</b>
	County Totals	CPS	202	196	199	178	179	209	236	179	157	177	165	196	180	2,453
		CWS	65	56	69	41	60	63	62	52	43	52	50	64	55	732
		<b>Total</b>	<b>267</b>	<b>252</b>	<b>268</b>	<b>219</b>	<b>239</b>	<b>272</b>	<b>298</b>	<b>231</b>	<b>200</b>	<b>229</b>	<b>215</b>	<b>260</b>	<b>235</b>	<b>3,185</b>
HUDSON	Hudson Central	CPS	87	83	103	88	98	115	131	93	83	89	93	141	91	1,295
		CWS	41	38	46	37	36	36	56	57	38	39	43	43	37	547
		<b>Total</b>	<b>128</b>	<b>121</b>	<b>149</b>	<b>125</b>	<b>134</b>	<b>151</b>	<b>187</b>	<b>150</b>	<b>121</b>	<b>128</b>	<b>136</b>	<b>184</b>	<b>128</b>	<b>1,842</b>
	Hudson North	CPS	83	87	75	77	92	98	79	62	34	51	71	92	62	963
		CWS	33	21	29	12	32	26	38	22	19	14	26	33	28	333
		<b>Total</b>	<b>116</b>	<b>108</b>	<b>104</b>	<b>89</b>	<b>124</b>	<b>124</b>	<b>117</b>	<b>84</b>	<b>53</b>	<b>65</b>	<b>97</b>	<b>125</b>	<b>90</b>	<b>1,296</b>
	Hudson South	CPS	68	46	57	47	65	53	47	55	38	43	41	60	48	668
		CWS	17	19	26	19	24	15	18	19	16	17	34	23	35	282
		<b>Total</b>	<b>85</b>	<b>65</b>	<b>83</b>	<b>66</b>	<b>89</b>	<b>68</b>	<b>65</b>	<b>74</b>	<b>54</b>	<b>60</b>	<b>75</b>	<b>83</b>	<b>83</b>	<b>950</b>
	Hudson West	CPS	104	89	74	80	80	80	102	72	72	59	84	94	87	1,077
		CWS	21	35	29	26	39	31	38	32	30	30	34	54	32	431
		<b>Total</b>	<b>125</b>	<b>124</b>	<b>103</b>	<b>106</b>	<b>119</b>	<b>111</b>	<b>140</b>	<b>104</b>	<b>102</b>	<b>89</b>	<b>118</b>	<b>148</b>	<b>119</b>	<b>1,508</b>
County Totals	CPS	342	305	309	292	335	346	359	282	227	242	289	387	288	4,003	
	CWS	112	113	130	94	131	108	150	130	103	100	137	153	132	1,593	
	<b>Total</b>	<b>454</b>	<b>418</b>	<b>439</b>	<b>386</b>	<b>466</b>	<b>454</b>	<b>509</b>	<b>412</b>	<b>330</b>	<b>342</b>	<b>426</b>	<b>540</b>	<b>420</b>	<b>5,596</b>	
HUNTERDON	Hunterdon	CPS	30	44	43	36	42	47	44	43	37	40	40	56	44	546
		CWS	20	16	17	18	16	20	18	13	11	9	17	19	14	208
		<b>Total</b>	<b>50</b>	<b>60</b>	<b>60</b>	<b>54</b>	<b>58</b>	<b>67</b>	<b>62</b>	<b>56</b>	<b>48</b>	<b>49</b>	<b>57</b>	<b>75</b>	<b>58</b>	<b>754</b>
	County Totals	CPS	30	44	43	36	42	47	44	43	37	40	40	56	44	546
		CWS	20	16	17	18	16	20	18	13	11	9	17	19	14	208
<b>Total</b>		<b>50</b>	<b>60</b>	<b>60</b>	<b>54</b>	<b>58</b>	<b>67</b>	<b>62</b>	<b>56</b>	<b>48</b>	<b>49</b>	<b>57</b>	<b>75</b>	<b>58</b>	<b>754</b>	
MERCER	Mercer North	CPS	105	79	94	103	95	124	125	107	81	107	84	139	113	1,356
		CWS	38	35	46	43	42	34	39	32	31	28	25	57	50	500
		<b>Total</b>	<b>143</b>	<b>114</b>	<b>140</b>	<b>146</b>	<b>137</b>	<b>158</b>	<b>164</b>	<b>139</b>	<b>112</b>	<b>135</b>	<b>109</b>	<b>196</b>	<b>163</b>	<b>1,856</b>
	Mercer South	CPS	112	86	89	98	90	104	134	105	86	78	89	125	95	1,291
		CWS	43	32	35	18	35	33	32	30	25	34	33	44	40	434
		<b>Total</b>	<b>155</b>	<b>118</b>	<b>124</b>	<b>116</b>	<b>125</b>	<b>137</b>	<b>166</b>	<b>135</b>	<b>111</b>	<b>112</b>	<b>122</b>	<b>169</b>	<b>135</b>	<b>1,725</b>
	County Totals	CPS	217	165	183	201	185	228	259	212	167	185	173	264	208	2,647
		CWS	81	67	81	61	77	67	71	62	56	62	58	101	90	934
<b>Total</b>		<b>298</b>	<b>232</b>	<b>264</b>	<b>262</b>	<b>262</b>	<b>295</b>	<b>330</b>	<b>274</b>	<b>223</b>	<b>247</b>	<b>231</b>	<b>365</b>	<b>298</b>	<b>3,581</b>	

**Table 5: Monthly Count of CPS Reports and CWS Referrals Assigned to CP&P Local Offices**

County	Local Office	Type of Referral	Nov 2017	Dec 2017	Jan 2018	Feb 2018	Mar 2018	Apr 2018	May 2018	Jun 2018	Jul 2018	Aug 2018	Sep 2018	Oct 2018	Nov 2018	Total
MIDDLESEX	Middlesex Central	CPS	115	87	139	96	118	104	118	101	78	62	75	116	93	1302
		CWS	35	35	40	35	29	36	29	36	32	28	30	31	28	424
		<b>Total</b>	<b>150</b>	<b>122</b>	<b>179</b>	<b>131</b>	<b>147</b>	<b>140</b>	<b>147</b>	<b>137</b>	<b>110</b>	<b>90</b>	<b>105</b>	<b>147</b>	<b>121</b>	<b>1726</b>
	Middlesex Coastal	CPS	124	121	127	124	125	128	144	123	111	100	120	161	110	1618
		CWS	53	33	51	28	45	36	52	42	24	37	39	49	39	528
		<b>Total</b>	<b>177</b>	<b>154</b>	<b>178</b>	<b>152</b>	<b>170</b>	<b>164</b>	<b>196</b>	<b>165</b>	<b>135</b>	<b>137</b>	<b>159</b>	<b>210</b>	<b>149</b>	<b>2146</b>
	Middlesex West	CPS	140	106	132	134	148	128	146	128	83	88	129	168	108	1638
		CWS	58	37	51	46	33	41	45	44	30	51	40	38	48	562
		<b>Total</b>	<b>198</b>	<b>143</b>	<b>183</b>	<b>180</b>	<b>181</b>	<b>169</b>	<b>191</b>	<b>172</b>	<b>113</b>	<b>139</b>	<b>169</b>	<b>206</b>	<b>156</b>	<b>2200</b>
	County Totals	CPS	379	314	398	354	391	360	408	352	272	250	324	445	311	4558
		CWS	146	105	142	109	107	113	126	122	86	116	109	118	115	1514
		<b>Total</b>	<b>525</b>	<b>419</b>	<b>540</b>	<b>463</b>	<b>498</b>	<b>473</b>	<b>534</b>	<b>474</b>	<b>358</b>	<b>366</b>	<b>433</b>	<b>563</b>	<b>426</b>	<b>6072</b>
MONMOUTH	Monmouth North	CPS	152	125	160	167	162	149	174	152	118	107	159	165	133	1923
		CWS	54	44	61	60	58	56	61	34	36	36	61	62	42	665
		<b>Total</b>	<b>206</b>	<b>169</b>	<b>221</b>	<b>227</b>	<b>220</b>	<b>205</b>	<b>235</b>	<b>186</b>	<b>154</b>	<b>143</b>	<b>220</b>	<b>227</b>	<b>175</b>	<b>2588</b>
	Monmouth South	CPS	133	114	150	123	159	137	160	113	112	91	149	149	151	1741
		CWS	42	44	42	34	48	34	51	42	36	43	41	50	54	561
		<b>Total</b>	<b>175</b>	<b>158</b>	<b>192</b>	<b>157</b>	<b>207</b>	<b>171</b>	<b>211</b>	<b>155</b>	<b>148</b>	<b>134</b>	<b>190</b>	<b>199</b>	<b>205</b>	<b>2302</b>
	County Totals	CPS	285	239	310	290	321	286	334	265	230	198	308	314	284	3664
		CWS	96	88	103	94	106	90	112	76	72	79	102	112	96	1226
		<b>Total</b>	<b>381</b>	<b>327</b>	<b>413</b>	<b>384</b>	<b>427</b>	<b>376</b>	<b>446</b>	<b>341</b>	<b>302</b>	<b>277</b>	<b>410</b>	<b>426</b>	<b>380</b>	<b>4890</b>
MORRIS	Morris East	CPS	86	66	96	64	73	71	94	66	79	74	75	100	84	1028
		CWS	38	31	40	32	34	32	29	25	24	20	24	42	19	390
		<b>Total</b>	<b>124</b>	<b>97</b>	<b>136</b>	<b>96</b>	<b>107</b>	<b>103</b>	<b>123</b>	<b>91</b>	<b>103</b>	<b>94</b>	<b>99</b>	<b>142</b>	<b>103</b>	<b>1418</b>
	Morris West	CPS	99	88	86	63	97	103	107	77	75	74	84	118	92	1163
		CWS	27	34	47	32	41	34	26	31	26	18	32	32	29	409
		<b>Total</b>	<b>126</b>	<b>122</b>	<b>133</b>	<b>95</b>	<b>138</b>	<b>137</b>	<b>133</b>	<b>108</b>	<b>101</b>	<b>92</b>	<b>116</b>	<b>150</b>	<b>121</b>	<b>1572</b>
	County Totals	CPS	185	154	182	127	170	174	201	143	154	148	159	218	176	2191
		CWS	65	65	87	64	75	66	55	56	50	38	56	74	48	799
		<b>Total</b>	<b>250</b>	<b>219</b>	<b>269</b>	<b>191</b>	<b>245</b>	<b>240</b>	<b>256</b>	<b>199</b>	<b>204</b>	<b>186</b>	<b>215</b>	<b>292</b>	<b>224</b>	<b>2990</b>
OCEAN	Ocean North	CPS	181	168	163	133	161	167	166	144	163	143	154	203	178	2124
		CWS	45	36	56	43	44	40	69	51	34	38	40	68	60	624
		<b>Total</b>	<b>226</b>	<b>204</b>	<b>219</b>	<b>176</b>	<b>205</b>	<b>207</b>	<b>235</b>	<b>195</b>	<b>197</b>	<b>181</b>	<b>194</b>	<b>271</b>	<b>238</b>	<b>2748</b>
	Ocean South	CPS	142	121	159	146	174	146	149	167	124	135	160	166	170	1959
		CWS	50	31	33	42	41	44	43	36	36	55	32	45	42	530
		<b>Total</b>	<b>192</b>	<b>152</b>	<b>192</b>	<b>188</b>	<b>215</b>	<b>190</b>	<b>192</b>	<b>203</b>	<b>160</b>	<b>190</b>	<b>192</b>	<b>211</b>	<b>212</b>	<b>2489</b>
	County Totals	CPS	323	289	322	279	335	313	315	311	287	278	314	369	348	4083
		CWS	95	67	89	85	85	84	112	87	70	93	72	113	102	1154
		<b>Total</b>	<b>418</b>	<b>356</b>	<b>411</b>	<b>364</b>	<b>420</b>	<b>397</b>	<b>427</b>	<b>398</b>	<b>357</b>	<b>371</b>	<b>386</b>	<b>482</b>	<b>450</b>	<b>5237</b>
PASSAIC	Passaic Central	CPS	199	155	173	171	171	178	243	163	108	128	164	207	177	2237
		CWS	76	78	65	75	74	62	87	54	43	51	55	93	66	879
		<b>Total</b>	<b>275</b>	<b>233</b>	<b>238</b>	<b>246</b>	<b>245</b>	<b>240</b>	<b>330</b>	<b>217</b>	<b>151</b>	<b>179</b>	<b>219</b>	<b>300</b>	<b>243</b>	<b>3116</b>
	Passaic North	CPS	158	131	134	135	166	152	185	143	104	147	128	189	158	1930
		CWS	80	57	79	75	58	56	56	63	52	57	74	78	60	845
		<b>Total</b>	<b>238</b>	<b>188</b>	<b>213</b>	<b>210</b>	<b>224</b>	<b>208</b>	<b>241</b>	<b>206</b>	<b>156</b>	<b>204</b>	<b>202</b>	<b>267</b>	<b>218</b>	<b>2775</b>
	County Totals	CPS	357	286	307	306	337	330	428	306	212	275	292	396	335	4167
		CWS	156	135	144	150	132	118	143	117	95	108	129	171	126	1724
		<b>Total</b>	<b>513</b>	<b>421</b>	<b>451</b>	<b>456</b>	<b>469</b>	<b>448</b>	<b>571</b>	<b>423</b>	<b>307</b>	<b>383</b>	<b>421</b>	<b>567</b>	<b>461</b>	<b>5891</b>
SALEM	Salem	CPS	77	58	68	56	79	77	73	62	52	56	73	68	53	852
		CWS	23	22	22	12	20	15	17	17	13	21	31	22	19	254
		<b>Total</b>	<b>100</b>	<b>80</b>	<b>90</b>	<b>68</b>	<b>99</b>	<b>92</b>	<b>90</b>	<b>79</b>	<b>65</b>	<b>77</b>	<b>104</b>	<b>90</b>	<b>72</b>	<b>1106</b>
	County Totals	CPS	77	58	68	56	79	77	73	62	52	56	73	68	53	852
		CWS	23	22	22	12	20	15	17	17	13	21	31	22	19	254
<b>Total</b>	<b>100</b>	<b>80</b>	<b>90</b>	<b>68</b>	<b>99</b>	<b>92</b>	<b>90</b>	<b>79</b>	<b>65</b>	<b>77</b>	<b>104</b>	<b>90</b>	<b>72</b>	<b>1106</b>		
SOMERSET	Somerset	CPS	130	119	119	127	115	140	136	155	106	93	125	153	137	1655
		CWS	39	53	37	30	64	34	44	34	35	35	30	47	44	526
		<b>Total</b>	<b>169</b>	<b>172</b>	<b>156</b>	<b>157</b>	<b>179</b>	<b>174</b>	<b>180</b>	<b>189</b>	<b>141</b>	<b>128</b>	<b>155</b>	<b>200</b>	<b>181</b>	<b>2181</b>
	County Totals	CPS	130	119	119	127	115	140	136	155	106	93	125	153	137	1655
		CWS	39	53	37	30	64	34	44	34	35	35	30	47	44	526
<b>Total</b>	<b>169</b>	<b>172</b>	<b>156</b>	<b>157</b>	<b>179</b>	<b>174</b>	<b>180</b>	<b>189</b>	<b>141</b>	<b>128</b>	<b>155</b>	<b>200</b>	<b>181</b>	<b>2181</b>		

Data in this report is preliminary and may differ from any final report. This report is produced to ensure continuous quality improvement throughout DCF.

**Table 5: Monthly Count of CPS Reports and CWS Referrals Assigned to CP&P Local Offices**

County	Local Office	Type of Referral														Total
			Nov 2017	Dec 2017	Jan 2018	Feb 2018	Mar 2018	Apr 2018	May 2018	Jun 2018	Jul 2018	Aug 2018	Sep 2018	Oct 2018	Nov 2018	
SUSSEX	Sussex	CPS	86	70	85	64	70	90	87	94	62	60	72	90	64	994
		CWS	25	22	41	26	32	34	25	24	20	22	27	30	17	345
		<b>Total</b>	<b>111</b>	<b>92</b>	<b>126</b>	<b>90</b>	<b>102</b>	<b>124</b>	<b>112</b>	<b>118</b>	<b>82</b>	<b>82</b>	<b>99</b>	<b>120</b>	<b>81</b>	<b>1339</b>
	County Totals	CPS	86	70	85	64	70	90	87	94	62	60	72	90	64	994
		<b>Total</b>	<b>111</b>	<b>92</b>	<b>126</b>	<b>90</b>	<b>102</b>	<b>124</b>	<b>112</b>	<b>118</b>	<b>82</b>	<b>82</b>	<b>99</b>	<b>120</b>	<b>81</b>	<b>1339</b>
UNION	Union Central	CPS	84	91	88	89	87	88	98	78	67	54	76	98	85	1083
		CWS	18	19	30	36	29	25	28	25	23	21	25	33	26	338
		<b>Total</b>	<b>102</b>	<b>110</b>	<b>118</b>	<b>125</b>	<b>116</b>	<b>113</b>	<b>126</b>	<b>103</b>	<b>90</b>	<b>75</b>	<b>101</b>	<b>131</b>	<b>111</b>	<b>1421</b>
	Union East	CPS	91	75	102	91	98	74	89	92	63	48	89	103	93	1108
		CWS	26	29	26	32	33	26	27	32	24	21	34	36	29	375
		<b>Total</b>	<b>117</b>	<b>104</b>	<b>128</b>	<b>123</b>	<b>131</b>	<b>100</b>	<b>116</b>	<b>124</b>	<b>87</b>	<b>69</b>	<b>123</b>	<b>139</b>	<b>122</b>	<b>1483</b>
	Union West	CPS	88	83	77	84	83	81	98	91	58	54	77	84	88	1046
		CWS	36	27	38	34	22	27	39	25	25	23	27	42	30	395
		<b>Total</b>	<b>124</b>	<b>110</b>	<b>115</b>	<b>118</b>	<b>105</b>	<b>108</b>	<b>137</b>	<b>116</b>	<b>83</b>	<b>77</b>	<b>104</b>	<b>126</b>	<b>118</b>	<b>1441</b>
	County Totals	CPS	263	249	267	264	268	243	285	261	188	156	242	285	266	3237
		CWS	80	75	94	102	84	78	94	82	72	65	86	111	85	1108
		<b>Total</b>	<b>343</b>	<b>324</b>	<b>361</b>	<b>366</b>	<b>352</b>	<b>321</b>	<b>379</b>	<b>343</b>	<b>260</b>	<b>221</b>	<b>328</b>	<b>396</b>	<b>351</b>	<b>4345</b>
WARREN	Warren	CPS	69	50	75	72	85	88	93	85	59	82	86	78	71	993
		CWS	33	22	19	29	32	20	24	25	28	23	32	27	22	336
		<b>Total</b>	<b>102</b>	<b>72</b>	<b>94</b>	<b>101</b>	<b>117</b>	<b>108</b>	<b>117</b>	<b>110</b>	<b>87</b>	<b>105</b>	<b>118</b>	<b>105</b>	<b>93</b>	<b>1329</b>
	County Totals	CPS	69	50	75	72	85	88	93	85	59	82	86	78	71	993
		<b>Total</b>	<b>102</b>	<b>72</b>	<b>94</b>	<b>101</b>	<b>117</b>	<b>108</b>	<b>117</b>	<b>110</b>	<b>87</b>	<b>105</b>	<b>118</b>	<b>105</b>	<b>93</b>	<b>1329</b>
County CPS Referral Total		CPS	4,876	4,302	4,955	4,392	4,908	4,929	5,469	4,611	3,755	3,825	4,461	5,418	4,653	60,554
County CWS Referral Total		CWS	1,713	1,543	1,740	1,523	1,668	1,550	1,764	1,554	1,253	1,355	1,578	1,942	1,570	20,753
County Referral Total		<b>Total</b>	<b>6,589</b>	<b>5,845</b>	<b>6,695</b>	<b>5,915</b>	<b>6,576</b>	<b>6,479</b>	<b>7,233</b>	<b>6,165</b>	<b>5,008</b>	<b>5,180</b>	<b>6,039</b>	<b>7,360</b>	<b>6,223</b>	<b>81,307</b>
Central Region IAIU	CPS	73	55	62	58	63	62	89	64	40	57	39	67	63	792	
	CWS	0	0	0	0	0	0	0	0	0	0	0	0	0	0	
	<b>Total</b>	<b>73</b>	<b>55</b>	<b>62</b>	<b>58</b>	<b>63</b>	<b>62</b>	<b>89</b>	<b>64</b>	<b>40</b>	<b>57</b>	<b>39</b>	<b>67</b>	<b>63</b>	<b>792</b>	
Metro Region IAIU	CPS	48	56	54	63	48	52	78	60	40	38	50	65	61	713	
	CWS	0	0	0	0	0	0	0	0	0	0	0	0	0	0	
	<b>Total</b>	<b>48</b>	<b>56</b>	<b>54</b>	<b>63</b>	<b>48</b>	<b>52</b>	<b>78</b>	<b>60</b>	<b>40</b>	<b>38</b>	<b>50</b>	<b>65</b>	<b>61</b>	<b>713</b>	
Northern Region IAIU	CPS	58	54	60	53	53	69	88	60	42	34	63	71	70	775	
	CWS	0	0	0	0	0	0	0	0	0	0	0	0	0	0	
	<b>Total</b>	<b>58</b>	<b>54</b>	<b>60</b>	<b>53</b>	<b>53</b>	<b>69</b>	<b>88</b>	<b>60</b>	<b>42</b>	<b>34</b>	<b>63</b>	<b>71</b>	<b>70</b>	<b>775</b>	
Southern Region IAIU	CPS	77	84	90	75	74	86	95	71	61	76	67	100	58	1,014	
	CWS	0	0	0	0	0	0	0	0	0	0	0	0	0	0	
	<b>Total</b>	<b>77</b>	<b>84</b>	<b>90</b>	<b>75</b>	<b>74</b>	<b>86</b>	<b>95</b>	<b>71</b>	<b>61</b>	<b>76</b>	<b>67</b>	<b>100</b>	<b>58</b>	<b>1,014</b>	
IAIU CPS Subtotal		CPS	256	249	266	249	238	269	350	255	183	205	219	303	252	3,294
IAIU CWS Subtotal		CWS	0	0	0	0	0	0	0	0	0	0	0	0	0	0
IAIU Subtotal		<b>Total</b>	<b>256</b>	<b>249</b>	<b>266</b>	<b>249</b>	<b>238</b>	<b>269</b>	<b>350</b>	<b>255</b>	<b>183</b>	<b>205</b>	<b>219</b>	<b>303</b>	<b>252</b>	<b>3,294</b>
County and IAIU CPS Subtotal		CPS	5,132	4,551	5,221	4,641	5,146	5,198	5,819	4,866	3,938	4,030	4,680	5,721	4,905	63,848
County and IAIU CWS Subtotal		CWS	1,713	1,543	1,740	1,523	1,668	1,550	1,764	1,554	1,253	1,355	1,578	1,942	1,570	20,753
Unable to Determine <sup>(1)</sup>		<b>Total</b>	<b>129</b>	<b>98</b>	<b>94</b>	<b>407</b>	<b>122</b>	<b>125</b>	<b>169</b>	<b>137</b>	<b>128</b>	<b>122</b>	<b>123</b>	<b>135</b>	<b>117</b>	<b>1,906</b>
Other Offices		<b>Total</b>	<b>2</b>	<b>3</b>	<b>5</b>	<b>6</b>	<b>3</b>	<b>3</b>	<b>4</b>	<b>6</b>	<b>0</b>	<b>3</b>	<b>1</b>	<b>3</b>	<b>1</b>	<b>40</b>
Grand Total		<b>Total</b>	<b>6,976</b>	<b>6,195</b>	<b>7,060</b>	<b>6,577</b>	<b>6,939</b>	<b>6,876</b>	<b>7,756</b>	<b>6,563</b>	<b>5,319</b>	<b>5,510</b>	<b>6,382</b>	<b>7,801</b>	<b>6,593</b>	<b>86,547</b>

<sup>(1)</sup>CPS Reports or CWS Referrals not assigned to an office through the Assignment Designee, but were assigned to an office for an assessment or investigation.