



Child Protection and Permanency

Monthly Screening and Investigation Report December 2020

Christine Norbut Beyer, MSW
Commissioner



Table of Contents

Table 1: NJ State Central Registry Activity: Monthly Child Abuse and Neglect Hotline Calls, Intakes and Assignments to Child Protection & Permanency (CP&P) Offices

Chart 1: CP&P Annual Trends in Child Protection Services (CPS) Reports and Child Welfare Services (CWS) Referrals

Table 2: Assignments to CP&P Offices: CPS Reports and CWS Referrals

Table 3: Source of CPS Reports and CWS Referrals

Table 4: Monthly Count of CPS Reports and CWS Referrals Assigned to Counties

Table 5: Monthly Count of CPS Reports and CWS Referrals Assigned to CP&P Local Offices

Table 1: NJ State Central Registry Activity: Monthly Child Abuse and Neglect Hotline Calls, Intakes and Assignments to CP&P Offices^{1,2,7}

2019-2020	Hotline Call Activity				Intakes Recorded in NJ SPIRIT ^{6,8}													Assignments to CP&P Offices					
	Total Calls to SCR ³	Abandon Calls ⁴	Average Time to Answer (seconds)	Resulting NJS Intakes ⁵	CPS Reports		CWS Referrals		No Action Required (NAR)		Related Information (RI)		Information & Referral (I&R)		Information Only (IO)		Unusual Incident (UIRS)		CPS Reports		CWS Referrals		Total
					n	%	n	%	n	%	n	%	n	%	n	%	n	%	n	%	n	%	
December 2019	12,832	1,147	102	13,166	4,855	36.9%	1,432	10.9%	203	1.5%	3,204	24.3%	1,478	11.2%	1,994	15.1%	0	15.1%	4,855	77.2%	1,434	22.8%	6,289
January 2020	15,893	2,070	141	15,573	5,715	36.7%	1,841	11.8%	227	1.5%	3,717	23.9%	1,976	12.7%	2,097	13.5%	0	13.5%	5,715	75.6%	1,842	24.4%	7,557
February 2020	14,714	1,744	150	14,684	5,380	36.6%	1,625	11.1%	226	1.5%	3,605	24.6%	1,854	12.6%	1,994	13.6%	0	0.0%	5,380	76.8%	1,624	23.2%	7,004
March 2020	12,263	1,262	11	12,398	4,171	33.6%	1,063	8.6%	199	1.6%	3,075	24.8%	1,885	15.2%	2,005	16.2%	5	0.0%	4,172	79.7%	1,065	20.3%	5,237
April 2020	7,500	548	76	7,917	2,149	27.1%	407	5.1%	196	2.5%	1,852	23.4%	1,866	23.6%	1,447	18.3%	0	0.0%	2,149	84.1%	407	15.9%	2,556
May 2020	9,654	1,808	249	9,402	2,897	30.8%	537	5.7%	137	1.5%	2,342	24.9%	1,974	21.0%	1,515	16.1%	0	0.0%	2,897	84.4%	537	15.6%	3,434
June 2020	10,871	3,782	305	9,131	3,045	33.3%	636	7.0%	133	1.5%	2,281	25.0%	1,554	17.0%	1,482	16.2%	0	0.0%	3,045	82.7%	636	17.3%	3,681
July 2020	11,649	1,628	237	11,499	3,628	31.6%	738	6.4%	145	1.3%	2,892	25.2%	1,815	15.8%	2,281	19.8%	0	0.0%	3,628	83.1%	738	16.9%	4,366
August 2020	11,248	1,493	232	11,204	3,569	31.9%	821	7.3%	164	1.5%	2,993	26.7%	1,649	14.7%	2,008	17.9%	0	0.0%	3,569	81.3%	822	18.7%	4,391
September 2020	12,277	1,495	203	12,505	4,153	33.2%	1,031	8.2%	246	2.0%	3,097	24.8%	2,046	16.4%	1,932	15.4%	0	0.0%	4,153	80.1%	1,030	19.9%	5,183
October 2020	13,118	1,258	183	13,320	4,257	32.0%	867	6.5%	191	1.4%	3,220	24.2%	2,709	20.3%	2,076	15.6%	0	0.0%	4,257	83.1%	868	16.9%	5,125
November 2020	10,789	1,462	183	10,930	3,564	32.6%	670	6.1%	141	1.3%	2,608	23.9%	2,159	19.8%	1,788	16.4%	0	0.0%	3,564	84.2%	670	15.8%	4,234
December 2020	9,618	1,385	238	10,567	3,517	33.3%	681	6.4%	149	1.4%	2,345	22.2%	2,123	20.1%	1,752	16.6%	0	0.0%	3,517	83.8%	681	16.2%	4,198
	11,725	1,622	178	11,715	3,915	33.4%	950	8.1%	181	1.5%	2,864	24.4%	1,930	16.5%	1,875	16.0%	0	0.0%	3,915	80.5%	950	19.5%	4,866
Overall Total	152,426	21,082		152,296	50,900		12,349		2,357		37,231		25,088		24,371		5		50,901	80.5%	12,354	19.5%	63,255

¹Comes from three distinct sources: (1) the Automatic Call Distribution (ACD) phone system; which keeps a count of the number of calls and call routing; (2) Monthly NJSpirit Intakes; which record decision making on calls received by hotline screeners, and (3) NJSpirit extracts of assigned CWS Referrals and CPS Reports.

²The number of Intakes, CPS Reports, and CWS Referrals are based on an extract from NJSpirit.

Data extracted by the Office of Research, Evaluation, and Reporting on **January 08, 2021** includes all Intakes, CPS Reports, and CWS Referrals received from **December 01, 2020** through **December 31, 2020**.

³The number calls received through the ACD System that were directed to a screener from any call-in phone number.

⁴The number of calls received through the ACD System that are abandoned either while waiting in queue or while ringing.

⁵The number of Intakes entered in NJSpirit from the number of calls received.

⁶The number of Intakes recorded in NJSpirit, by type of Intake. There is not a one-to-one relationship between an ACD call and an Intake; multiple calls to State Central Registry (SCR) may result in a single Intake, or one call may result in multiple Intakes.

⁷Intake: The process of documenting: a report of alleged abuse or neglect of a child (CPS); a request for services on behalf of a child, or a referral of a child for services (CWS); a call in which the caller provides additional or clarifying information about a current service case or active investigation (RI); informing a caller of, or referring a caller to, services available from other private or public sources (I&R); a call that requires no action by CP&P (NAR); or a response to a simple inquiry (IO).

CP&P Annual Trends in CPS Reports and CWS Referrals

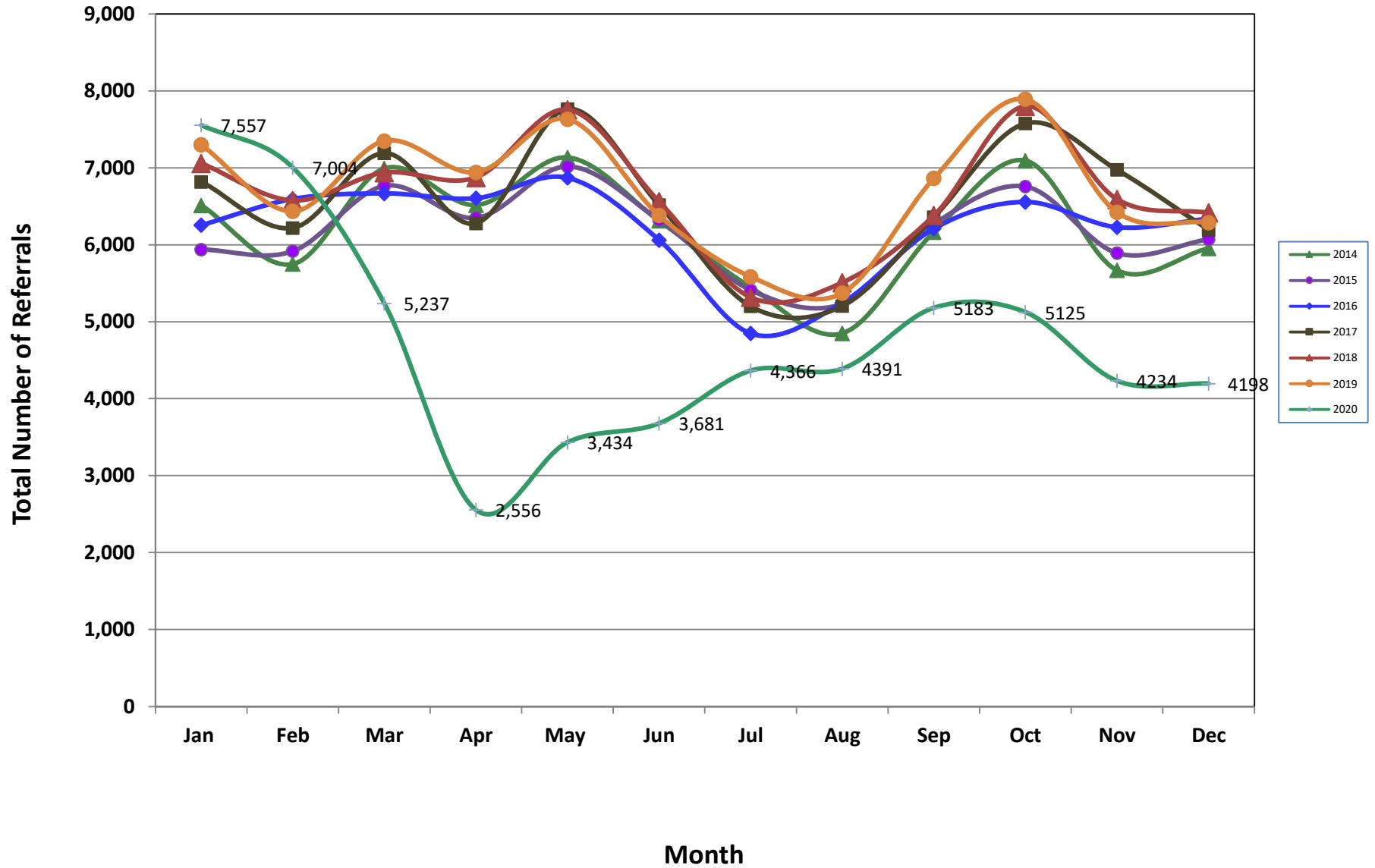


Table 2: Assignments to CP&P Offices: CPS Reports and CWS Referrals¹

Intake Date ³		CPS Reports ²	CWS Referrals ²	Total Assignments ²
2015	Jan 2015	4,549	1,391	5,940
	Feb 2015	4,574	1,345	5,919
	Mar 2015	5,187	1,580	6,767
	Apr 2015	4,967	1,384	6,351
	May 2015	5,457	1,561	7,018
	Jun 2015	4,887	1,436	6,323
	Jul 2015	4,140	1,273	5,413
	Aug 2015	3,978	1,256	5,234
	Sep 2015	4,776	1,495	6,271
	Oct 2015	5,139	1,619	6,758
	Nov 2015	4,417	1,477	5,894
	Dec 2015	4,530	1,544	6,074
	Total	56,601	17,361	73,962
2016	Jan 2016	4,686	1,571	6,257
	Feb 2016	4,974	1,622	6,596
	Mar 2016	5,000	1,669	6,669
	Apr 2016	5,065	1,542	6,607
	May 2016	5,238	1,633	6,871
	Jun 2016	4,602	1,461	6,063
	Jul 2016	3,663	1,187	4,850
	Aug 2016	3,941	1,307	5,248
	Sep 2016	4,654	1,559	6,213
	Oct 2016	4,935	1,622	6,557
	Nov 2016	4,677	1,552	6,229
	Dec 2016	4,762	1,580	6,342
	Total	56,197	18,305	74,502
2017	Jan 2017	5,111	1,708	6,819
	Feb 2017	4,716	1,504	6,220
	Mar 2017	5,349	1,843	7,192
	Apr 2017	4,790	1,490	6,280
	May 2017	5,847	1,919	7,766
	Jun 2017	4,853	1,665	6,518
	Jul 2017	3,814	1,389	5,203
	Aug 2017	3,866	1,340	5,206
	Sep 2017	4,719	1,643	6,362
	Oct 2017	5,613	1,966	7,579
	Nov 2017	5,223	1,753	6,976
	Dec 2017	4,601	1,594	6,195
	Total	58,502	19,814	78,316

Table 2: Assignments to CP&P Offices: CPS Reports and CWS Referrals¹

Intake Date ³		CPS Reports ²	CWS Referrals ²	Total Assignments ²
2018	Jan 2018	5,276	1,784	7,060
	Feb 2018	4,933	1,644	6,577
	Mar 2018	5,212	1,727	6,939
	Apr 2018	5,275	1,601	6,876
	May 2018	5,920	1,836	7,756
	Jun 2018	4,948	1,615	6,563
	Jul 2018	4,011	1,308	5,319
	Aug 2018	4,102	1,408	5,510
	Sep 2018	4,748	1,634	6,382
	Oct 2018	5,790	2,011	7,801
	Nov 2018	4,973	1,620	6,593
	Dec 2018	4,891	1,527	6,418
	Total	60,079	19,715	79,794
2019	Jan 2019	5,443	1,858	7,301
	Feb 2019	4,811	1,628	6,439
	Mar 2019	5,677	1,824	7,501
	Apr 2019	5,313	1,630	6,943
	May 2019	5,853	1,781	7,634
	Jun 2019	4,874	1,509	6,383
	Jul 2019	4,277	1,309	5,586
	Aug 2019	4,068	1,306	5,374
	Sep 2019	5,315	1,551	6,866
	Oct 2019	5,968	1,926	7,894
	Nov 2019	4,991	1,432	6,423
	Dec 2019	4,855	1,434	6,289
	Total	61,445	1,434	6,289
2020	Jan 2020	5,715	1,842	7,557
	Feb 2020	5,380	1,624	7,004
	Mar 2020	4,172	1,065	5,237
	Apr 2020	2,149	407	2,556
	May 2020	2,897	537	3,434
	Jun 2020	3,045	636	3,681
	Jul 2020	3,628	738	4,366
	Aug 2020	3,569	822	4,391
	Sep 2020	4,153	1,030	5,183
	Oct 2020	4,257	868	5,125
	Nov 2020	3,564	670	4,234
	Dec 2020	3,517	681	4,198
	Total	46,046	10,920	56,966
Grand Total		338,870	105,303	444,173

Table 3: Source of CPS Reports and CWS Referrals

CPS Reports and CWS Referrals	Source	Dec 2019	Jan 2020	Feb 2020	Mar 2020	Apr 2020	May 2020	Jun 2020	Jul 2020	Aug 2020	Sep 2020	Oct 2020	Nov 2020	Dec 2020		13 Month Total	
	School Staff	1,562	2,327	2,148	1,188	143	210	119	70	63	565	809	515	523	12%	10,242	16%
	Healthcare Provider	923	990	937	760	499	656	775	784	819	882	869	817	760	18%	10,471	17%
	Law Enforcement	1,247	1,295	1,349	1,197	792	1,086	1,140	1,440	1,372	1,400	1,303	1,147	1,092	26%	15,860	25%
	Government Agency	367	452	342	240	134	198	238	274	304	295	278	180	233	6%	3,535	6%
	Parent	448	509	435	395	219	281	326	400	395	431	351	330	355	8%	4,875	8%
	Relative/Friend/Neighbor	388	411	334	345	232	296	326	392	343	424	337	294	286	7%	4,408	7%
	Anonymous	508	600	603	437	222	284	294	416	425	502	525	386	400	10%	5,602	9%
	CP&P	89	106	74	67	28	31	42	47	104	95	98	72	82	2%	935	1%
	Court/Legal	158	210	162	104	40	59	50	80	81	99	86	77	81	2%	1,287	2%
	Community Group/Individual	227	317	279	199	111	143	157	193	171	177	163	141	132	3%	2,410	4%
	Facility Staff (incl Correctional Facility)	83	79	93	40	21	41	43	63	61	72	68	53	60	1%	777	1%
	Child (Self)	37	28	21	25	7	17	17	25	29	31	29	34	31	1%	331	1%
	Other	242	213	210	227	105	130	149	175	219	204	198	177	150	4%	2,399	4%
	Daycare/Babysitter	10	20	17	13	3	2	5	7	5	6	11	11	13	0%	123	0%
Total	6,289	7,557	7,004	5,237	2,556	3,434	3,681	4,366	4,391	5,183	5,125	4,234	4,198		63,255		

Table 4: Monthly Count of CPS Reports and CWS Referrals Assigned to Counties

County														Average Number of Assignments Last 13 Months	Nov 20 to Dec 20 Numerical Difference
	Dec 2019	Jan 2020	Feb 2020	Mar 2020	Apr 2020	May 2020	Jun 2020	Jul 2020	Aug 2020	Sep 2020	Oct 2020	Nov 2020	Dec 2020		
Atlantic	261	292	298	244	121	161	180	214	195	243	256	181	199	219	18
Bergen	375	457	418	281	145	189	194	232	233	300	319	255	245	280	-10
Burlington	285	383	368	256	133	181	185	231	237	271	278	224	224	250	0
Camden	508	603	581	437	216	305	325	362	345	433	443	337	356	404	19
Cape May	78	85	58	70	33	50	66	72	65	87	61	72	61	66	-11
Cumberland	221	238	216	171	96	116	130	145	131	165	167	147	147	161	0
Essex	651	790	735	525	249	364	366	440	486	538	500	419	416	498	-3
Gloucester	266	285	297	221	111	160	177	198	192	232	214	186	202	211	16
Hudson	415	558	449	347	137	226	199	282	268	274	325	234	296	308	62
Hunterdon	66	67	48	39	22	30	24	33	40	42	38	36	29	40	-7
Mercer	267	344	279	210	106	144	164	197	187	234	207	193	194	210	1
Middlesex	488	580	475	405	205	231	283	310	321	344	356	286	303	353	17
Monmouth	349	411	381	301	166	196	233	263	267	302	311	254	237	282	-17
Morris	212	264	273	194	85	124	137	152	150	202	198	164	148	177	-16
Ocean	406	482	446	355	177	257	264	336	278	349	319	294	290	327	-4
Passaic	409	456	460	353	143	213	219	267	250	321	312	255	225	299	-30
Salem	69	79	82	75	35	44	53	56	48	56	68	67	53	60	-14
Somerset	146	197	189	126	66	92	82	114	101	155	130	123	106	125	-17
Sussex	104	114	116	73	47	48	51	86	73	92	101	74	46	79	-28
Union	327	383	383	246	137	147	190	181	225	261	253	189	210	241	21
Warren	82	98	101	65	54	50	56	75	77	86	98	67	66	75	-1
County Subtotals	5,985	7,166	6,653	4,994	2,484	3,328	3,578	4,246	4,169	4,987	4,954	4,057	4,053	4,666	-4
Central Region IAIU	48	67	64	34	10	6	23	17	17	26	23	23	13	29	-10
Metro Region IAIU	41	46	69	33	3	11	2	13	13	8	14	16	11	22	-5
Northern Region IAIU	45	59	42	44	6	12	10	14	12	11	10	11	8	22	-3
Southern Region IAIU	62	82	61	51	12	18	20	23	30	25	28	23	26	35	3
IAIU Subtotals	196	254	236	162	31	47	55	67	72	70	75	73	58	107	-15
¹ Unable to Determine	108	135	113	79	39	59	48	51	149	126	93	103	85	91	-18
Other Offices	0	2	2	2	2	0	0	2	1	0	3	1	2	1	1
Grand Total	6,289	7,557	7,004	5,237	2,556	3,434	3,681	4,366	4,391	5,183	5,125	4,234	4,198	4,866	-36

¹CPS Reports or CWS Referrals not assigned to an office through the Assignment Designee, but were assigned to an office for an assessment or investigation.



Table 5: Monthly Count of CPS Reports and CWS Referrals Assigned to CP&P Local Offices

County	Local Office	Type of Referral														Total
			Dec 2019	Jan 2020	Feb 2020	Mar 2020	Apr 2020	May 2020	Jun 2020	Jul 2020	Aug 2020	Sep 2020	Oct 2020	Nov 2020	Dec 2020	
ATLANTIC	Atlantic East	CPS	133	120	116	115	55	70	82	96	100	109	110	76	87	1,269
		CWS	31	33	55	30	9	16	25	24	22	32	17	13	16	323
		Total	164	153	171	145	64	86	107	120	122	141	127	89	103	1,592
	Atlantic West	CPS	79	101	95	82	50	64	57	75	64	88	107	79	82	1,023
		CWS	18	38	32	17	7	11	16	19	9	14	22	13	14	230
		Total	97	139	127	99	57	75	73	94	73	102	129	92	96	1,253
	County Totals	CPS	212	221	211	197	105	134	139	171	164	197	217	155	169	2,292
		CWS	49	71	87	47	16	27	41	43	31	46	39	26	30	553
		Total	261	292	298	244	121	161	180	214	195	243	256	181	199	2,845
BERGEN	Bergen Central	CPS	102	145	135	81	55	66	66	85	85	89	105	70	80	1,164
		CWS	51	57	47	24	12	13	21	14	12	31	33	19	15	349
		Total	153	202	182	105	67	79	87	99	97	120	138	89	95	1,513
	Bergen South	CPS	171	182	179	126	67	90	92	104	118	144	156	138	119	1,686
		CWS	51	73	57	50	11	20	15	29	18	36	25	28	31	444
		Total	222	255	236	176	78	110	107	133	136	180	181	166	150	2,130
	County Totals	CPS	273	327	314	207	122	156	158	189	203	233	261	208	199	2,850
		CWS	102	130	104	74	23	33	36	43	30	67	58	47	46	793
		Total	375	457	418	281	145	189	194	232	233	300	319	255	245	3,643
BURLINGTON	Burlington East	CPS	109	147	142	99	55	74	95	80	101	100	126	95	104	1,327
		CWS	48	50	40	22	12	17	11	29	17	30	19	16	13	324
		Total	157	197	182	121	67	91	106	109	118	130	145	111	117	1,651
	Burlington West	CPS	96	143	141	106	51	76	68	99	95	117	108	93	87	1,280
		CWS	32	43	45	29	15	14	11	23	24	24	25	20	20	325
		Total	128	186	186	135	66	90	79	122	119	141	133	113	107	1,605
	County Totals	CPS	205	290	283	205	106	150	163	179	196	217	234	188	191	2,607
		CWS	80	93	85	51	27	31	22	52	41	54	44	36	33	649
		Total	285	383	368	256	133	181	185	231	237	271	278	224	224	3,256
CAMDEN	Camden Central	CPS	118	112	119	99	40	68	86	74	69	87	99	79	79	1,129
		CWS	24	43	29	14	12	11	15	21	18	20	18	14	17	256
		Total	142	155	148	113	52	79	101	95	87	107	117	93	96	1,385
	Camden East	CPS	100	94	102	82	45	54	59	67	78	98	101	64	79	1,023
		CWS	30	44	32	16	7	8	14	18	15	19	13	13	15	244
		Total	130	138	134	98	52	62	73	85	93	117	114	77	94	1,267
	Camden North	CPS	84	119	117	96	39	56	71	81	63	85	86	62	59	1,018
		CWS	26	31	28	26	9	15	12	13	18	20	19	19	12	248
		Total	110	150	145	122	48	71	83	94	81	105	105	81	71	1,266
	Camden South	CPS	96	125	122	82	54	73	59	71	67	84	96	75	78	1,082
		CWS	30	35	32	22	10	20	9	17	17	20	11	11	17	251
		Total	126	160	154	104	64	93	68	88	84	104	107	86	95	1,333
	County Totals	CPS	398	450	460	359	178	251	275	293	277	354	382	280	295	4,252
		CWS	110	153	121	78	38	54	50	69	68	79	61	57	61	999
		Total	508	603	581	437	216	305	325	362	345	433	443	337	356	5,251
CAPE MAY	Cape May	CPS	62	68	42	56	29	37	55	58	52	75	52	60	52	698
		CWS	16	17	16	14	4	13	11	14	13	12	9	12	9	160
		Total	78	85	58	70	33	50	66	72	65	87	61	72	61	858
	County Totals	CPS	62	68	42	56	29	37	55	58	52	75	52	60	52	698
		CWS	16	17	16	14	4	13	11	14	13	12	9	12	9	160
Total	78	85	58	70	33	50	66	72	65	87	61	72	61	858		
CUMBERLAND	Cumberland East	CPS	61	57	52	44	24	40	44	37	43	49	61	46	41	599
		CWS	9	11	12	11	10	8	6	6	6	6	12	8	5	110
		Total	70	68	64	55	34	48	50	43	49	55	73	54	46	709
	Cumberland West	CPS	126	141	121	91	53	56	66	91	70	89	77	76	78	1,135
		CWS	25	29	31	25	9	12	14	11	12	21	17	17	23	246
		Total	151	170	152	116	62	68	80	102	82	110	94	93	101	1,381
	County Totals	CPS	187	198	173	135	77	96	110	128	113	138	138	122	119	1,734
		CWS	34	40	43	36	19	20	20	17	18	27	29	25	28	356
		Total	221	238	216	171	96	116	130	145	131	165	167	147	147	2,090

Data in this report is preliminary and may differ from any final report. This report is produced to ensure continuous quality improvement throughout DCF.



Table 5: Monthly Count of CPS Reports and CWS Referrals Assigned to CP&P Local Offices

County	Local Office	Type of Referral	Dec 2019	Jan 2020	Feb 2020	Mar 2020	Apr 2020	May 2020	Jun 2020	Jul 2020	Aug 2020	Sep 2020	Oct 2020	Nov 2020	Dec 2020	Total
ESSEX	Essex Central	CPS	98	106	99	71	58	60	58	61	67	69	76	59	66	948
		CWS	28	35	36	21	6	8	8	20	17	17	15	14	10	235
		Total	126	141	135	92	64	68	66	81	84	86	91	73	76	1,183
	Essex North	CPS	63	78	92	50	24	28	39	47	42	45	50	48	44	650
		CWS	22	30	26	19	2	18	8	9	9	21	16	3	13	196
		Total	85	108	118	69	26	46	47	56	51	66	66	51	57	846
	Essex South	CPS	71	87	64	65	22	32	46	40	54	53	48	42	38	662
		CWS	21	25	24	14	7	7	10	11	16	14	12	8	10	179
		Total	92	112	88	79	29	39	56	51	70	67	60	50	48	841
	Newark Center City	CPS	93	121	114	74	33	59	53	73	69	99	76	75	73	1012
		CWS	35	29	33	17	8	12	6	16	12	18	10	12	8	216
		Total	128	150	147	91	41	71	59	89	81	117	86	87	81	1228
	Newark Northeast	CPS	74	97	95	77	38	47	55	58	62	72	72	47	50	844
		CWS	19	35	25	19	7	5	17	15	17	17	22	13	14	225
		Total	93	132	120	96	45	52	72	73	79	89	94	60	64	1069
	Newark South	CPS	95	120	94	74	38	69	50	72	93	91	84	83	76	1039
		CWS	32	27	33	24	6	19	16	18	28	22	19	15	14	273
		Total	127	147	127	98	44	88	66	90	121	113	103	98	90	1312
County Totals	CPS	494	609	558	411	213	295	301	351	387	429	406	354	347	5155	
	CWS	157	181	177	114	36	69	65	89	99	109	94	65	69	1324	
	Total	651	790	735	525	249	364	366	440	486	538	500	419	416	6479	
GLOUCESTER	Gloucester East	CPS	102	111	110	90	47	67	71	79	75	83	73	79	83	1070
		CWS	24	26	32	16	9	7	14	15	15	14	14	11	6	203
		Total	126	137	142	106	56	74	85	94	90	97	87	90	89	1273
	Gloucester West	CPS	107	116	117	88	45	76	75	87	88	112	108	82	95	1196
		CWS	33	32	38	27	10	10	17	17	14	23	19	14	18	272
		Total	140	148	155	115	55	86	92	104	102	135	127	96	113	1468
	County Totals	CPS	209	227	227	178	92	143	146	166	163	195	181	161	178	2266
		CWS	57	58	70	43	19	17	31	32	29	37	33	25	24	475
		Total	266	285	297	221	111	160	177	198	192	232	214	186	202	2741
HUDSON	Hudson Central	CPS	103	141	99	88	37	69	62	81	74	75	90	71	98	1088
		CWS	26	48	37	32	12	12	19	21	19	21	32	15	18	312
		Total	129	189	136	120	49	81	81	102	93	96	122	86	116	1400
	Hudson North	CPS	67	85	85	66	23	42	34	56	46	53	45	45	47	694
		CWS	23	33	25	15	10	13	12	14	15	16	14	9	10	209
		Total	90	118	110	81	33	55	46	70	61	69	59	54	57	903
	Hudson South	CPS	49	77	62	44	11	31	23	36	40	31	48	21	29	502
		CWS	19	27	13	12	5	8	7	10	7	7	6	12	8	141
		Total	68	104	75	56	16	39	30	46	47	38	54	33	37	643
	Hudson West	CPS	101	108	100	65	34	45	35	47	55	58	65	53	69	835
		CWS	27	39	28	25	5	6	7	17	12	13	25	8	17	229
		Total	128	147	128	90	39	51	42	64	67	71	90	61	86	1064
	County Totals	CPS	320	411	346	263	105	187	154	220	215	217	248	190	243	3119
		CWS	95	147	103	84	32	39	45	62	53	57	77	44	53	891
		Total	415	558	449	347	137	226	199	282	268	274	325	234	296	4010
HUNTERDON	Hunterdon	CPS	51	48	37	30	20	27	20	29	34	31	31	28	23	409
		CWS	15	19	11	9	2	3	4	4	6	11	7	8	6	105
		Total	66	67	48	39	22	30	24	33	40	42	38	36	29	514
	County Totals	CPS	51	48	37	30	20	27	20	29	34	31	31	28	23	409
		CWS	15	19	11	9	2	3	4	4	6	11	7	8	6	105
Total	66	67	48	39	22	30	24	33	40	42	38	36	29	514		
MERCER	Mercer North	CPS	106	120	108	89	45	50	76	87	78	101	78	83	86	1107
		CWS	36	30	41	17	14	16	11	16	15	17	20	21	16	270
		Total	142	150	149	106	59	66	87	103	93	118	98	104	102	1377
	Mercer South	CPS	102	144	102	85	36	65	65	81	78	92	94	75	74	1093
		CWS	23	50	28	19	11	13	12	13	16	24	15	14	18	256
		Total	125	194	130	104	47	78	77	94	94	116	109	89	92	1349
	County Totals	CPS	208	264	210	174	81	115	141	168	156	193	172	158	160	2200
CWS		59	80	69	36	25	29	23	29	31	41	35	35	34	526	
Total	267	344	279	210	106	144	164	197	187	234	207	193	194	2726		

Data in this report is preliminary and may differ from any final report. This report is produced to ensure continuous quality improvement throughout DCF.



Table 5: Monthly Count of CPS Reports and CWS Referrals Assigned to CP&P Local Offices

County	Local Office	Type of Referral														Total	
			Dec 2019	Jan 2020	Feb 2020	Mar 2020	Apr 2020	May 2020	Jun 2020	Jul 2020	Aug 2020	Sep 2020	Oct 2020	Nov 2020	Dec 2020		
MIDDLESEX	Middlesex Central	CPS	103	139	109	94	64	62	68	67	66	73	87	65	71	1068	
		CWS	25	36	31	23	10	6	10	11	12	19	18	11	19	231	
		Total	128	175	140	117	74	68	78	78	78	92	105	76	90	1299	
	Middlesex Coastal	CPS	146	160	135	131	54	69	95	109	116	105	120	91	89	1420	
		CWS	35	41	32	35	14	12	15	17	20	16	15	13	11	276	
		Total	181	201	167	166	68	81	110	126	136	121	135	104	100	1696	
	Middlesex West	CPS	139	151	125	97	58	75	79	84	88	102	96	90	93	1277	
		CWS	40	53	43	25	5	7	16	22	19	29	20	16	20	315	
		Total	179	204	168	122	63	82	95	106	107	131	116	106	113	1592	
	County Totals	CPS	388	450	369	322	176	206	242	260	270	280	303	246	253	3765	
		CWS	100	130	106	83	29	25	41	50	51	64	53	40	50	822	
		Total	488	580	475	405	205	231	283	310	321	344	356	286	303	4587	
MONMOUTH	Monmouth North	CPS	146	171	154	134	84	98	106	123	118	128	149	127	102	1640	
		CWS	51	63	42	37	10	18	22	26	27	33	23	15	20	387	
		Total	197	234	196	171	94	116	128	149	145	161	172	142	122	2027	
	Monmouth South	CPS	123	124	138	110	58	71	89	99	100	118	116	91	94	1331	
		CWS	29	53	47	20	14	9	16	15	22	23	23	21	21	313	
		Total	152	177	185	130	72	80	105	114	122	141	139	112	115	1644	
	County Totals	CPS	269	295	292	244	142	169	195	222	218	246	265	218	196	2971	
		CWS	80	116	89	57	24	27	38	41	49	56	46	36	41	700	
		Total	349	411	381	301	166	196	233	263	267	302	311	254	237	3671	
	MORRIS	Morris East	CPS	71	94	85	75	35	70	48	53	64	77	89	68	64	893
			CWS	25	36	42	19	8	15	16	13	12	24	9	8	10	237
			Total	96	130	127	94	43	85	64	66	76	101	98	76	74	1130
Morris West		CPS	89	101	115	75	39	34	58	75	53	87	80	75	66	947	
		CWS	27	33	31	25	3	5	15	11	21	14	20	13	8	226	
		Total	116	134	146	100	42	39	73	86	74	101	100	88	74	1173	
County Totals		CPS	160	195	200	150	74	104	106	128	117	164	169	143	130	1840	
		CWS	52	69	73	44	11	20	31	24	33	38	29	21	18	463	
		Total	212	264	273	194	85	124	137	152	150	202	198	164	148	2303	
OCEAN		Ocean North	CPS	189	197	196	150	81	133	121	147	121	147	150	126	129	1887
			CWS	45	67	47	37	8	17	18	24	20	36	22	20	32	393
			Total	234	264	243	187	89	150	139	171	141	183	172	146	161	2280
	Ocean South	CPS	134	173	168	131	73	95	113	142	112	132	130	124	110	1637	
		CWS	38	45	35	37	15	12	12	23	25	34	17	24	19	336	
		Total	172	218	203	168	88	107	125	165	137	166	147	148	129	1973	
	County Totals	CPS	323	370	364	281	154	228	234	289	233	279	280	250	239	3524	
		CWS	83	112	82	74	23	29	30	47	45	70	39	44	51	729	
		Total	406	482	446	355	177	257	264	336	278	349	319	294	290	4253	
	PASSAIC	Passaic Central	CPS	140	172	180	154	55	87	102	102	86	124	134	118	92	1546
			CWS	64	66	63	44	17	24	25	18	22	30	28	12	13	426
			Total	204	238	243	198	72	111	127	120	108	154	162	130	105	1972
Passaic North		CPS	151	149	160	124	60	84	70	123	108	137	123	107	104	1500	
		CWS	54	69	57	31	11	18	22	24	34	30	27	18	16	411	
		Total	205	218	217	155	71	102	92	147	142	167	150	125	120	1911	
County Totals		CPS	291	321	340	278	115	171	172	225	194	261	257	225	196	3046	
		CWS	118	135	120	75	28	42	47	42	56	60	55	30	29	837	
		Total	409	456	460	353	143	213	219	267	250	321	312	255	225	3883	
SALEM		Salem	CPS	51	58	58	64	31	37	40	45	39	44	56	60	48	631
			CWS	18	21	24	11	4	7	13	11	9	12	12	7	5	154
			Total	69	79	82	75	35	44	53	56	48	56	68	67	53	785
	County Totals	CPS	51	58	58	64	31	37	40	45	39	44	56	60	48	631	
		CWS	18	21	24	11	4	7	13	11	9	12	12	7	5	154	
		Total	69	79	82	75	35	44	53	56	48	56	68	67	53	785	
SOMERSET	Somerset	CPS	115	150	151	103	57	78	69	98	84	117	116	109	94	1341	
		CWS	31	47	38	23	9	14	13	16	17	38	14	14	12	286	
		Total	146	197	189	126	66	92	82	114	101	155	130	123	106	1627	
	County Totals	CPS	115	150	151	103	57	78	69	98	84	117	116	109	94	1341	
		CWS	31	47	38	23	9	14	13	16	17	38	14	14	12	286	
		Total	146	197	189	126	66	92	82	114	101	155	130	123	106	1627	

Data in this report is preliminary and may differ from any final report. This report is produced to ensure continuous quality improvement throughout DCF.



Table 5: Monthly Count of CPS Reports and CWS Referrals Assigned to CP&P Local Offices

County	Local Office	Type of Referral	2020													Total	
			Dec 2019	Jan 2020	Feb 2020	Mar 2020	Apr 2020	May 2020	Jun 2020	Jul 2020	Aug 2020	Sep 2020	Oct 2020	Nov 2020	Dec 2020		
SUSSEX	Sussex	CPS	74	85	93	55	41	38	45	75	59	70	76	64	41	816	
		CWS	30	29	23	18	6	10	6	11	14	22	25	10	5	209	
		Total	104	114	116	73	47	48	51	86	73	92	101	74	46	1025	
	County Totals	CPS	74	85	93	55	41	38	45	75	59	70	76	64	41	816	
		CWS	30	29	23	18	6	10	6	11	14	22	25	10	5	209	
			Total	104	114	116	73	47	48	51	86	73	92	101	74	46	1025
UNION	Union Central	CPS	75	98	87	73	37	44	41	56	56	66	72	48	67	820	
		CWS	32	29	31	16	8	6	10	8	11	13	14	11	7	196	
		Total	107	127	118	89	45	50	51	64	67	79	86	59	74	1016	
	Union East	CPS	86	92	97	54	35	44	50	46	84	66	52	51	57	814	
		CWS	19	36	40	19	5	4	15	7	16	16	19	10	10	216	
		Total	105	128	137	73	40	48	65	53	100	82	71	61	67	1030	
	Union West	CPS	78	94	88	64	46	44	52	54	52	75	80	58	58	843	
		CWS	37	34	40	20	6	5	22	10	6	25	16	11	11	243	
		Total	115	128	128	84	52	49	74	64	58	100	96	69	69	1086	
	County Totals	CPS	239	284	272	191	118	132	143	156	192	207	204	157	182	2477	
		CWS	88	99	111	55	19	15	47	25	33	54	49	32	28	655	
		Total	327	383	383	246	137	147	190	181	225	261	253	189	210	3132	
	WARREN	Warren	CPS	69	67	77	55	46	43	40	64	66	70	85	59	57	798
CWS			13	31	24	10	8	7	16	11	11	16	13	8	9	177	
Total			82	98	101	65	54	50	56	75	77	86	98	67	66	975	
County Totals		CPS	69	67	77	55	46	43	40	64	66	70	85	59	57	798	
		CWS	13	31	24	10	8	7	16	11	11	16	13	8	9	177	
			Total	82	98	101	65	54	50	56	75	77	86	98	67	66	975
County CPS Referral Total		CPS	4,598	5,388	5,077	3,958	2,082	2,797	2,948	3,514	3,432	4,017	4,133	3,435	3,412	48,791	
County CWS Referral Total		CWS	1,387	1,778	1,576	1,036	402	531	630	732	737	970	821	622	641	11,863	
County Referral Total		Total	5,985	7,166	6,653	4,994	2,484	3,328	3,578	4,246	4,169	4,987	4,954	4,057	4,053	60,654	
Central Region IAIU	CPS	48	67	63	34	10	6	23	17	17	26	23	23	13	370		
	CWS	0	0	0	0	0	0	0	0	0	0	0	0	0	0		
	Total	48	67	63	34	10	6	23	17	17	26	23	23	13	370		
Metro Region IAIU	CPS	41	46	69	33	3	11	2	13	13	8	14	16	11	280		
	CWS	0	0	0	0	0	0	0	0	0	0	0	0	0	0		
	Total	41	46	69	33	3	11	2	13	13	8	14	16	11	280		
Northern Region IAIU	CPS	45	59	42	44	6	12	10	14	12	11	10	11	8	284		
	CWS	0	0	0	0	0	0	0	0	0	0	0	0	0	0		
	Total	45	59	42	44	6	12	10	14	12	11	10	11	8	284		
Southern Region IAIU	CPS	62	82	61	51	12	18	20	23	30	25	28	23	26	461		
	CWS	0	0	0	0	0	0	0	0	0	0	0	0	0	0		
	Total	62	82	61	51	12	18	20	23	30	25	28	23	26	461		
IAIU CPS Subtotal		CPS	196	254	235	162	31	47	55	67	72	70	75	73	58	1,395	
IAIU CWS Subtotal		CWS	0	0	0	0	0	0	0	0	0	0	0	0	0		
IAIU Subtotal		Total	196	254	235	162	31	47	55	67	72	70	75	73	58	1,395	
County and IAIU CPS Subtotal		CPS	4,794	5,642	5,312	4,120	2,113	2,844	3,003	3,581	3,504	4,087	4,208	3,508	3,470	50,186	
County and IAIU CWS Subtotal		CWS	1,387	1,778	1,576	1,036	402	531	630	732	737	970	821	622	641	11,863	
Unable to Determine(1)		Total	108	135	113	79	39	59	48	51	149	126	93	103	85	1,188	
Other Offices		Total	0	2	3	2	2	0	0	2	1	0	3	1	2	18	
Grand Total		Total	6,289	7,557	7,004	5,237	2,556	3,434	3,681	4,366	4,391	5,183	5,125	4,234	4,198	63,255	

(1) CPS Reports or CWS Referrals not assigned to an office through the Assignment Designee, but were assigned to an office for an assessment or investigation.