



Child Protection and Permanency

Monthly Screening and Investigation Report February 2019

Christine Norbut Beyer, MSW
Commissioner

March 8, 2019



Table of Contents

Table 1: NJ State Central Registry Activity: Monthly Child Abuse and Neglect Hotline Calls, Intakes and Assignments to Child Protection & Permanency (CP&P) Offices

Chart 1: CP&P Annual Trends in Child Protection Services (CPS) Reports and Child Welfare Services (CWS) Referrals

Table 2: Assignments to CP&P Offices: CPS Reports and CWS Referrals

Table 3: Source of CPS Reports and CWS Referrals

Table 4: Monthly Count of CPS Reports and CWS Referrals Assigned to Counties

Table 5: Monthly Count of CPS Reports and CWS Referrals Assigned to CP&P Local Offices

Table 1: NJ State Central Registry Activity: Monthly Child Abuse and Neglect Hotline Calls, Intakes and Assignments to CP&P Offices^{1,2,7}

2017 - 2018	Hotline Call Activity				Intakes Recorded in NJ SPIRIT ^{6,8}												Assignments to CP&P Offices				
	Total Calls to SCR ³	Abandon Calls ⁴	Average Time to Answer (seconds)	Resulting NJS Intakes ⁵	CPS Reports		CWS Referrals		No Action Required (NAR)		Related Information (RI)		Information & Referral (I&R)		Information Only (IO)		CPS Reports		CWS Referrals		Total
					n	%	n	%	n	%	n	%	n	%	n	%	n	%	n	%	
February 2018	13,558	727	54	14,638	4,933	33.7%	1,643	11.2%	251	1.7%	3,807	26.0%	1,740	11.9%	2,264	15.5%	4,933	75.0%	1,644	25.0%	6,577
March 2018	14,714	804	55	15,869	5,212	32.8%	1,727	10.9%	288	1.8%	4,187	26.4%	1,855	11.7%	2,600	16.4%	5,212	75.1%	1,727	24.9%	6,939
April 2018	14,148	727	54	15,227	5,275	34.6%	1,603	10.5%	252	1.7%	3,952	26.0%	1,818	11.9%	2,327	15.3%	5,275	76.7%	1,601	23.3%	6,876
May 2018	15,956	1,482	69	16,668	5,920	35.5%	1,833	11.0%	316	1.9%	4,104	24.6%	1,997	12.0%	2,498	15.0%	5,920	76.3%	1,836	23.7%	7,756
June 2018	13,796	1,021	72	14,490	4,948	34.1%	1,614	11.1%	264	1.8%	3,662	25.3%	1,693	11.7%	2,309	15.9%	4,948	75.4%	1,615	24.6%	6,563
July 2018	11,406	407	35	12,497	4,011	32.1%	1,307	10.5%	214	1.7%	3,387	27.1%	1,374	11.0%	2,204	17.6%	4,011	75.4%	1,308	24.6%	5,319
August 2018	11,633	460	43	12,708	4,102	32.3%	1,409	11.1%	252	2.0%	3,455	27.2%	1,307	10.3%	2,183	17.2%	4,102	74.4%	1,408	25.6%	5,510
September 2018	13,554	925	64	14,277	4,748	33.3%	1,632	11.4%	217	1.5%	3,914	27.4%	1,448	10.1%	2,318	16.2%	4,748	74.4%	1,634	25.6%	6,382
October 2018	15,489	904	68	16,470	5,790	35.2%	2,008	12.2%	260	1.6%	4,103	24.9%	1,827	11.1%	2,482	15.1%	5,790	74.2%	2,011	25.8%	7,801
November 2018	13,533	1,111	80	14,067	4,973	35.4%	1,621	11.5%	210	1.5%	3,749	26.7%	1,453	10.3%	2,061	14.7%	4,973	75.4%	1,620	24.6%	6,593
December 2018	13,020	971	78	13,683	4,891	35.7%	1,524	11.1%	174	1.3%	3,518	25.7%	1,446	10.6%	2,130	15.6%	4,891	76.2%	1,527	23.8%	6,418
January 2019	14,566	1,097	91	15,153	5,443	35.9%	1,858	12.3%	224	1.5%	3,764	24.8%	1,673	11.0%	2,191	14.5%	5,443	74.6%	1,858	25.4%	7,301
February 2019	12,995	1,095	102	13,518	4,811	35.6%	1,626	12.0%	213	1.6%	3,476	25.7%	1,506	11.1%	1,886	14.0%	4,811	74.7%	1,628	25.3%	6,439
	13,721	902	67	14,559	5,004	34.4%	1,647	11.3%	241	1.7%	3,775	25.9%	1,626	11.2%	2,266	15.6%	5,004	75.2%	1,647	24.8%	6,652
Overall Total	178,368	11,731		189,265	65,057		21,405		3,135		49,078		21,137		29,453		65,057	75.2%	21,417	24.8%	86,474

¹Comes from three distinct sources: (1) the Automatic Call Distribution (ACD) phone system; which keeps a count of the number of calls and call routing; (2) Monthly NJSpirit Intakes; which record decision making on calls received by hotline screeners, and (3) NJSpirit extracts of assigned CWS Referrals and CPS Reports.

²The number of Intakes, CPS Reports, and CWS Referrals are based on an extract from NJSpirit. Data extracted by the Office of Research, Evaluation, and Reporting on **March 8, 2019** includes all Intakes, CPS Reports, and CWS Referrals received from **February 1, 2019 through February 28, 2019**.

³The number calls received through the ACD System that were directed to a screener from any call-in phone number.

⁴The number of calls received through the ACD System that are abandoned either while waiting in queue or while ringing.

⁵The number of Intakes entered in NJSpirit from the number of calls received.

⁶The number of Intakes recorded in NJSpirit, by type of Intake. There is not a one-to-one relationship between an ACD call and an Intake; multiple calls to State Central Registry (SCR) may result in a single Intake, or one call may result in multiple Intakes.

⁷Intake: The process of documenting: a report of alleged abuse or neglect of a child (CPS); a request for services on behalf of a child, or a referral of a child for services (CWS); a call in which the caller provides additional or clarifying information about a current service case or active investigation (RI); informing a caller of, or referring a caller to, services available from other private or public sources (I&R); a call that requires no action by CP&P (NAR); or a response to a simple inquiry (IO).

⁸NJ SPIRIT: NJ Statewide Protection Investigation and Reporting Information Tool case management system

CP&P Annual Trends in CPS Reports and CWS Referrals

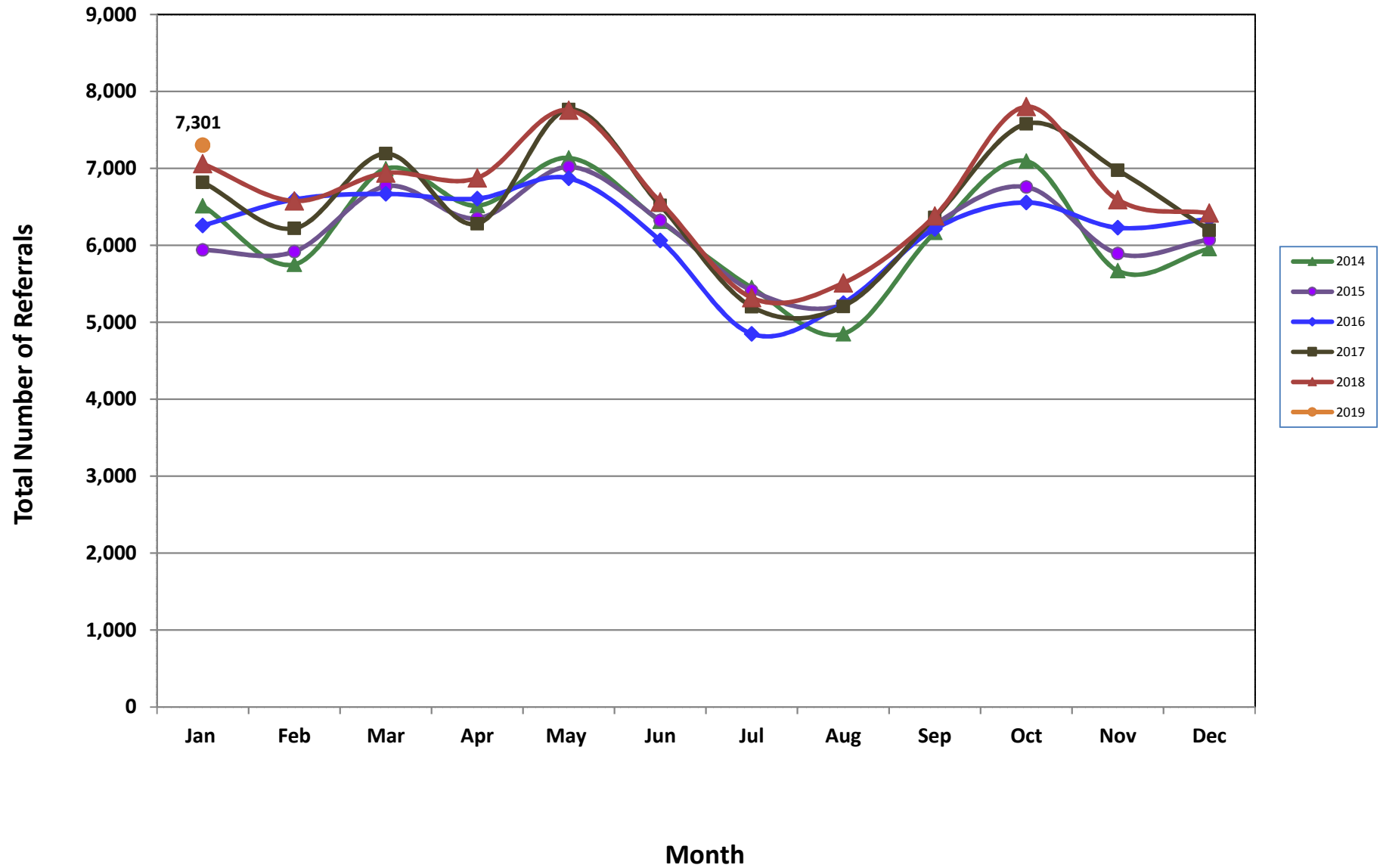


Table 2: Assignments to CP&P Offices: CPS Reports and CWS Referrals¹

Intake Date ³		CPS Reports ²	CWS Referrals ²	Total Assignments ²
2014	Jan 2014	5,097	1,416	6,513
	Feb 2014	4,457	1,295	5,752
	Mar 2014	5,408	1,586	6,994
	Apr 2014	5,049	1,467	6,516
	May 2014	5,501	1,635	7,136
	Jun 2014	4,796	1,517	6,313
	Jul 2014	4,202	1,247	5,449
	Aug 2014	3,629	1,222	4,851
	Sep 2014	4,668	1,498	6,166
	Oct 2014	5,509	1,586	7,095
	Nov 2014	4,254	1,416	5,670
	Dec 2014	4,509	1,447	5,956
	Total	57,079	17,332	74,411
2015	Jan 2015	4,549	1,391	5,940
	Feb 2015	4,574	1,345	5,919
	Mar 2015	5,187	1,580	6,767
	Apr 2015	4,967	1,384	6,351
	May 2015	5,457	1,561	7,018
	Jun 2015	4,887	1,436	6,323
	Jul 2015	4,140	1,273	5,413
	Aug 2015	3,978	1,256	5,234
	Sep 2015	4,776	1,495	6,271
	Oct 2015	5,139	1,619	6,758
	Nov 2015	4,417	1,477	5,894
	Dec 2015	4,530	1,544	6,074
	Total	56,601	17,361	73,962
2016	Jan 2016	4,686	1,571	6,257
	Feb 2016	4,974	1,622	6,596
	Mar 2016	5,000	1,669	6,669
	Apr 2016	5,065	1,542	6,607
	May 2016	5,238	1,633	6,871
	Jun 2016	4,602	1,461	6,063
	Jul 2016	3,663	1,187	4,850
	Aug 2016	3,941	1,307	5,248
	Sep 2016	4,654	1,559	6,213
	Oct 2016	4,935	1,622	6,557
	Nov 2016	4,677	1,552	6,229
	Dec 2016	4,762	1,580	6,342
	Total	56,197	18,305	74,502

Table 2: Assignments to CP&P Offices: CPS Reports and CWS Referrals¹

Intake Date ³		CPS Reports ²	CWS Referrals ²	Total Assignments ²
2017	Jan 2017	5,111	1,708	6,819
	Feb 2017	4,716	1,504	6,220
	Mar 2017	5,349	1,843	7,192
	Apr 2017	4,790	1,490	6,280
	May 2017	5,847	1,919	7,766
	Jun 2017	4,853	1,665	6,518
	Jul 2017	3,814	1,389	5,203
	Aug 2017	3,866	1,340	5,206
	Sep 2017	4,719	1,643	6,362
	Oct 2017	5,613	1,966	7,579
	Nov 2017	5,223	1,753	6,976
	Dec 2017	4,601	1,594	6,195
	Total	58,502	19,814	78,316
2018	Jan 2018	5,276	1,784	7,060
	Feb 2018	4,933	1,644	6,577
	Mar 2018	5,212	1,727	6,939
	Apr 2018	5,275	1,601	6,876
	May 2018	5,920	1,836	7,756
	Jun 2018	4,948	1,615	6,563
	Jul 2018	4,011	1,308	5,319
	Aug 2018	4,102	1,408	5,510
	Sep 2018	4,748	1,634	6,382
	Oct 2018	5,790	2,011	7,801
	Nov 2018	4,973	1,620	6,593
	Dec 2018	4,891	1,527	6,418
	Total	60,079	19,715	79,794
2019	Jan 2019	5,443	1,858	7,301
	Feb 2019	4,811	1,628	6,439
	Total	10,254	3,486	13,740
Grand Total		298,712	96,013	394,725

¹Source of Data: NJ SPIRIT

²A CPS Report or a CWS Referral may include multiple children in a family, with one or more allegation or request for services. In these cases, each CPS Report or CWS Referral is counted once - the CPS Report or the CWS Referral is the unit of analysis rather than the child.

³Prior to January 2014, the number of CPS Reports and CWS Referrals was based on the type of assignment of the CPS Report or CWS Referral. Beginning in January 2014, the number of CPS Reports and CWS Referrals is based on the number of CPS Reports and CWS Referrals received.

Table 3: Source of CPS Reports and CWS Referrals

	Source	Feb 2018	Mar 2018	Apr 2018	May 2018	Jun 2018	Jul 2018	Aug 2018	Sep 2018	Oct 2018	Nov 2018	Dec 2018	Jan 2019	Feb 2019		13 Month Total	
CPS Reports and CWS Referrals	School Staff	1970	1969	1783	2213	1243	184	118	1237	2256	1769	1643	2151	1887	29%	20,423	24%
	Healthcare Provider	809	931	932	994	885	904	920	928	1018	954	891	999	858	13%	12,023	14%
	Law Enforcement	1001	1149	1179	1264	1220	1238	1201	1251	1188	1186	1186	1131	1156	18%	15,350	18%
	Government Agency	410	466	417	446	441	436	468	428	521	430	387	417	345	5%	5,612	6%
	Parent	468	469	509	548	574	573	590	569	563	491	481	512	419	7%	6,766	8%
	Relative/Friend/Neighbor	394	440	475	496	517	475	488	475	452	370	393	447	359	6%	5,781	7%
	Anonymous	623	641	628	789	683	538	573	565	769	576	609	656	586	9%	8,236	10%
	CP&P	121	107	130	143	140	115	142	106	131	99	109	125	118	2%	1,586	2%
	Court/Legal	130	131	158	164	154	143	193	141	171	101	132	190	155	2%	1,963	2%
	Community Group/Individual	289	294	325	290	301	290	317	301	301	264	234	274	234	4%	3,714	4%
	Facility Staff (incl Correctional Facility)	70	72	68	97	64	101	135	103	97	86	79	88	57	1%	1,117	1%
	Child (Self)	33	41	38	34	49	38	53	35	51	30	35	23	29	0%	489	1%
	Other	242	207	217	261	272	267	289	228	262	218	226	270	219	3%	3,178	4%
	Daycare/Babysitter	17	22	17	17	20	17	23	15	21	19	13	18	17	0%	236	0%
	Total		6,577	6,939	6,876	7,756	6,563	5,319	5,510	6,382	7,801	6,593	6,418	7,301	6,439		86,474

Table 4: Monthly Count of CPS Reports and CWS Referrals Assigned to Counties

County														Average Number of Assignments Last 13 Months	Jan 19 to Feb 19 Numerical Difference
	Feb 2018	Mar 2018	Apr 2018	May 2018	Jun 2018	Jul 2018	Aug 2018	Sep 2018	Oct 2018	Nov 2018	Dec 2018	Jan 2019	Feb 2019		
Atlantic	208	267	260	326	284	213	231	295	280	264	243	285	274	264	-11
Bergen	371	458	374	474	354	291	243	333	467	412	377	460	369	383	-91
Burlington	307	290	312	302	304	284	246	270	348	313	318	338	361	307	23
Camden	526	559	562	643	564	472	485	543	606	515	469	577	485	539	-92
Cape May	73	68	95	100	97	80	85	109	87	73	68	103	83	86	-20
Cumberland	174	223	265	266	202	159	205	225	232	204	200	218	191	213	-27
Essex	695	778	770	811	713	545	622	666	859	712	694	798	723	722	-75
Gloucester	219	239	272	298	231	200	229	215	260	235	233	302	250	245	-52
Hudson	386	466	454	509	412	330	342	426	540	420	425	475	410	430	-65
Hunterdon	54	58	67	62	56	48	49	57	75	58	59	48	52	57	4
Mercer	262	262	295	330	274	223	247	231	365	298	283	298	301	282	3
Middlesex	463	498	473	534	474	358	366	433	563	426	472	527	476	466	-51
Monmouth	384	427	376	446	341	302	277	410	426	380	352	433	333	376	-100
Morris	191	245	240	256	199	204	186	215	292	224	242	264	215	229	-49
Ocean	364	420	397	427	398	357	371	386	482	450	408	428	382	405	-46
Passaic	456	469	448	571	423	307	383	421	567	461	438	482	394	448	-88
Salem	68	99	92	90	79	65	77	104	90	72	70	97	71	83	-26
Somerset	157	179	174	180	189	141	128	155	200	181	165	160	158	167	-2
Sussex	90	102	124	112	118	82	82	99	120	81	97	100	122	102	22
Union	366	352	321	379	343	260	221	328	396	351	343	401	359	340	-42
Warren	101	117	108	117	110	87	105	118	105	93	104	89	73	102	-16
County Subtotals	5,915	6,576	6,479	7,233	6,165	5,008	5,180	6,039	7,360	6,223	6,060	6,883	6,082	6,246	-801
Central Region IAIU	58	63	62	89	64	40	57	39	67	63	47	61	47	58	-14
Metro Region IAIU	63	48	52	78	60	40	38	50	65	61	51	55	47	54	-8
Northern Region IAIU	53	53	69	88	60	42	34	63	71	70	64	58	74	61	16
Southern Region IAIU	75	74	86	95	71	61	76	67	100	58	71	92	70	77	-22
IAIU Subtotals	249	238	269	350	255	183	205	219	303	252	233	266	238	251	-28
Unable to Determine¹	407	122	125	169	137	128	122	123	135	117	121	149	119	152	-30
Other Offices	6	3	3	4	6	0	3	1	3	1	4	3	0	3	-3
Grand Total	6,577	6,939	6,876	7,756	6,563	5,319	5,510	6,382	7,801	6,593	6,418	7,301	6,439	6,652	-862

¹CPS Reports or CWS Referrals not assigned to an office through the Assignment Designee, but were assigned to an office for an assessment or investigation.



Table 5: Monthly Count of CPS Reports and CWS Referrals Assigned to CP&P Local Offices

County	Local Office	Type of Referral														Total
			Feb 2018	Mar 2018	Apr 2018	May 2018	Jun 2018	Jul 2018	Aug 2018	Sep 2018	Oct 2018	Nov 2018	Dec 2018	Jan 2019	Feb 2019	
ATLANTIC	Atlantic East	CPS	95	131	118	157	132	97	106	132	132	139	107	140	128	1,614
		CWS	29	28	32	40	49	31	46	43	50	40	43	32	33	496
		Total	124	159	150	197	181	128	152	175	182	179	150	172	161	2,110
	Atlantic West	CPS	68	75	88	98	74	68	60	89	80	73	72	86	84	1,015
		CWS	16	33	22	31	29	17	19	31	18	12	21	27	29	305
		Total	84	108	110	129	103	85	79	120	98	85	93	113	113	1,320
	County Totals	CPS	163	206	206	255	206	165	166	221	212	212	179	226	212	2,629
		CWS	45	61	54	71	78	48	65	74	68	52	64	59	62	801
		Total	208	267	260	326	284	213	231	295	280	264	243	285	274	3,430
BERGEN	Bergen Central	CPS	112	144	122	141	112	76	59	88	147	103	119	137	98	1,458
		CWS	44	54	37	58	52	32	25	44	60	51	39	67	56	619
		Total	156	198	159	199	164	108	84	132	207	154	158	204	154	2,077
	Bergen South	CPS	163	198	144	199	119	136	112	152	187	188	155	173	139	2,065
		CWS	52	62	71	76	71	47	47	49	73	70	64	83	76	841
		Total	215	260	215	275	190	183	159	201	260	258	219	256	215	2,906
	County Totals	CPS	275	342	266	340	231	212	171	240	334	291	274	310	237	3,523
		CWS	96	116	108	134	123	79	72	93	133	121	103	150	132	1,460
		Total	371	458	374	474	354	291	243	333	467	412	377	460	369	4,983
BURLINGTON	Burlington East	CPS	110	118	116	104	115	117	93	93	131	124	128	132	150	1,531
		CWS	46	35	36	46	45	37	33	31	53	38	38	41	41	520
		Total	156	153	152	150	160	154	126	124	184	162	166	173	191	2,051
	Burlington West	CPS	117	105	108	120	114	100	83	113	124	121	123	123	133	1,484
		CWS	34	32	52	32	30	30	37	33	40	30	29	42	37	458
		Total	151	137	160	152	144	130	120	146	164	151	152	165	170	1,942
	County Totals	CPS	227	223	224	224	229	217	176	206	255	245	251	255	283	3,015
		CWS	80	67	88	78	75	67	70	64	93	68	67	83	78	978
		Total	307	290	312	302	304	284	246	270	348	313	318	338	361	3,993
CAMDEN	Camden Central	CPS	108	126	111	141	109	113	109	103	116	110	104	137	98	1,485
		CWS	30	39	32	47	33	27	27	36	41	27	27	31	34	431
		Total	138	165	143	188	142	140	136	139	157	137	131	168	132	1,916
	Camden East	CPS	99	129	139	127	113	99	99	106	110	103	81	95	83	1,383
		CWS	37	32	30	30	41	32	36	44	39	29	26	35	21	432
		Total	136	161	169	157	154	131	135	150	149	132	107	130	104	1,815
	Camden North	CPS	114	105	106	120	115	80	74	91	119	94	96	110	111	1,335
		CWS	24	34	25	41	44	26	33	34	42	31	19	36	42	431
		Total	138	139	131	161	159	106	107	125	161	125	115	146	153	1,766
	Camden South	CPS	79	75	100	113	86	72	85	98	108	89	91	103	73	1,172
		CWS	35	19	19	24	23	23	22	31	31	32	25	30	23	337
		Total	114	94	119	137	109	95	107	129	139	121	116	133	96	1,509
County Totals	CPS	400	435	456	501	423	364	367	398	453	396	372	445	365	5,375	
	CWS	126	124	106	142	141	108	118	145	153	119	97	132	120	1,631	
	Total	526	559	562	643	564	472	485	543	606	515	469	577	485	7,006	
CAPE MAY	Cape May	CPS	47	46	69	81	76	60	73	89	64	56	60	79	63	863
		CWS	26	22	26	19	21	20	12	20	23	17	8	24	20	258
		Total	73	68	95	100	97	80	85	109	87	73	68	103	83	1,121
	County Totals	CPS	47	46	69	81	76	60	73	89	64	56	60	79	63	863
		CWS	26	22	26	19	21	20	12	20	23	17	8	24	20	258
		Total	73	68	95	100	97	80	85	109	87	73	68	103	83	1,121
CUMBERLAND	Cumberland East	CPS	36	55	60	56	58	47	44	60	55	47	45	43	54	660
		CWS	17	18	18	17	15	15	13	15	18	15	13	17	9	200
		Total	53	73	78	73	73	62	57	75	73	62	58	60	63	860
	Cumberland West	CPS	92	126	146	146	111	82	118	118	116	106	116	119	100	1,496
		CWS	29	24	41	47	18	15	30	32	43	36	26	39	28	408
		Total	121	150	187	193	129	97	148	150	159	142	142	158	128	1,904
	County Totals	CPS	128	181	206	202	169	129	162	178	171	153	161	162	154	2,156
		CWS	46	42	59	64	33	30	43	47	61	51	39	56	37	608
		Total	174	223	265	266	202	159	205	225	232	204	200	218	191	2,764

Data in this report is preliminary and may differ from any final report. This report is produced to ensure continuous quality improvement throughout DCF.

Table 5: Monthly Count of CPS Reports and CWS Referrals Assigned to CP&P Local Offices

County	Local Office	Type of Referral	Month												Total	
			Feb 2018	Mar 2018	Apr 2018	May 2018	Jun 2018	Jul 2018	Aug 2018	Sep 2018	Oct 2018	Nov 2018	Dec 2018	Jan 2019		Feb 2019
ESSEX	Essex Central	CPS	77	107	103	113	95	70	92	68	97	103	90	107	97	1,219
		CWS	22	35	36	39	23	21	23	41	35	35	26	37	33	406
		Total	99	142	139	152	118	91	115	109	132	138	116	144	130	1,625
	Essex North	CPS	71	75	70	83	62	41	61	65	82	74	65	72	76	897
		CWS	21	34	24	24	35	18	15	28	31	25	20	32	25	332
		Total	92	109	94	107	97	59	76	93	113	99	85	104	101	1,229
	Essex South	CPS	64	63	83	65	92	46	76	63	80	70	77	86	76	941
		CWS	30	21	20	24	25	27	17	28	44	24	20	27	46	353
		Total	94	84	103	89	117	73	93	91	124	94	97	113	122	1,294
	Newark Center City	CPS	86	105	88	105	91	75	81	102	123	91	98	103	96	1,244
		CWS	35	34	38	42	33	26	26	27	44	36	25	38	32	436
		Total	121	139	126	147	124	101	107	129	167	127	123	141	128	1,680
	Newark Northeast	CPS	97	97	99	104	81	71	84	76	117	105	101	111	83	1,226
		CWS	39	44	38	40	42	24	35	29	58	30	24	28	26	457
		Total	136	141	137	144	123	95	119	105	175	135	125	139	109	1,683
Newark South	CPS	111	116	128	138	106	95	76	93	111	92	102	118	103	1,389	
	CWS	42	47	43	34	28	31	36	46	37	27	46	39	30	486	
	Total	153	163	171	172	134	126	112	139	148	119	148	157	133	1,875	
County Totals	CPS	506	563	571	608	527	398	470	467	610	535	533	597	531	6,916	
	CWS	189	215	199	203	186	147	152	199	249	177	161	201	192	2,470	
	Total	695	778	770	811	713	545	622	666	859	712	694	798	723	9,386	
GLOUCESTER	Gloucester East	CPS	85	79	113	118	79	75	76	86	104	85	70	108	88	1,166
		CWS	22	24	41	26	18	20	31	22	41	25	30	29	28	357
		Total	107	103	154	144	97	95	107	108	145	110	100	137	116	1,523
	Gloucester West	CPS	93	100	96	118	100	82	101	79	92	95	105	130	101	1,292
		CWS	19	36	22	36	34	23	21	28	23	30	28	35	33	368
		Total	112	136	118	154	134	105	122	107	115	125	133	165	134	1,660
	County Totals	CPS	178	179	209	236	179	157	177	165	196	180	175	238	189	2,458
		CWS	41	60	63	62	52	43	52	50	64	55	58	64	61	725
		Total	219	239	272	298	231	200	229	215	260	235	233	302	250	3,183
HUDSON	Hudson Central	CPS	88	98	115	131	93	83	89	93	141	91	117	107	104	1,350
		CWS	37	36	36	56	57	38	39	43	43	37	41	47	37	547
		Total	125	134	151	187	150	121	128	136	184	128	158	154	141	1,897
	Hudson North	CPS	77	92	98	79	62	34	51	71	92	62	72	87	67	944
		CWS	12	32	26	38	22	19	14	26	33	28	27	40	28	345
		Total	89	124	124	117	84	53	65	97	125	90	99	127	95	1,289
	Hudson South	CPS	47	65	53	47	55	38	43	41	60	48	48	55	47	647
		CWS	19	24	15	18	19	16	17	34	23	35	22	15	22	279
		Total	66	89	68	65	74	54	60	75	83	83	70	70	69	926
	Hudson West	CPS	80	80	80	102	72	72	59	84	94	87	72	87	69	1,038
		CWS	26	39	31	38	32	30	30	34	54	32	26	37	36	445
		Total	106	119	111	140	104	102	89	118	148	119	98	124	105	1,483
County Totals	CPS	292	335	346	359	282	227	242	289	387	288	309	336	287	3,979	
	CWS	94	131	108	150	130	103	100	137	153	132	116	139	123	1,616	
	Total	386	466	454	509	412	330	342	426	540	420	425	475	410	5,595	
HUNTERDON	Hunterdon	CPS	36	42	47	44	43	37	40	40	56	44	47	33	33	542
		CWS	18	16	20	18	13	11	9	17	19	14	12	15	19	201
		Total	54	58	67	62	56	48	49	57	75	58	59	48	52	743
	County Totals	CPS	36	42	47	44	43	37	40	40	56	44	47	33	33	542
		CWS	18	16	20	18	13	11	9	17	19	14	12	15	19	201
Total		54	58	67	62	56	48	49	57	75	58	59	48	52	743	
MERCER	Mercer North	CPS	103	95	124	125	107	81	107	84	139	113	110	117	114	1,419
		CWS	43	42	34	39	32	31	28	25	57	50	31	39	43	494
		Total	146	137	158	164	139	112	135	109	196	163	141	156	157	1,913
	Mercer South	CPS	98	90	104	134	105	86	78	89	125	95	109	101	104	1,318
		CWS	18	35	33	32	30	25	34	33	44	40	33	41	40	438
		Total	116	125	137	166	135	111	112	122	169	135	142	142	144	1,756
	County Totals	CPS	201	185	228	259	212	167	185	173	264	208	219	218	218	2,737
CWS		61	77	67	71	62	56	62	58	101	90	64	80	83	932	
Total		262	262	295	330	274	223	247	231	365	298	283	298	301	3,669	

Data in this report is preliminary and may differ from any final report. This report is produced to ensure continuous quality improvement throughout DCF.

Table 5: Monthly Count of CPS Reports and CWS Referrals Assigned to CP&P Local Offices

County	Local Office	Type of Referral	Month													Total
			Feb 2018	Mar 2018	Apr 2018	May 2018	Jun 2018	Jul 2018	Aug 2018	Sep 2018	Oct 2018	Nov 2018	Dec 2018	Jan 2019	Feb 2019	
MIDDLESEX	Middlesex Central	CPS	96	118	104	118	101	78	62	75	116	93	102	125	113	1301
		CWS	35	29	36	29	36	32	28	30	31	28	33	33	38	418
		Total	131	147	140	147	137	110	90	105	147	121	135	158	151	1719
	Middlesex Coastal	CPS	124	125	128	144	123	111	100	120	161	110	120	148	130	1644
		CWS	28	45	36	52	42	24	37	39	49	39	42	49	43	525
		Total	152	170	164	196	165	135	137	159	210	149	162	197	173	2169
	Middlesex West	CPS	134	148	128	146	128	83	88	129	168	108	138	126	116	1640
		CWS	46	33	41	45	44	30	51	40	38	48	37	46	36	535
		Total	180	181	169	191	172	113	139	169	206	156	175	172	152	2175
	County Totals	CPS	354	391	360	408	352	272	250	324	445	311	360	399	359	4585
CWS		109	107	113	126	122	86	116	109	118	115	112	128	117	1478	
Total		463	498	473	534	474	358	366	433	563	426	472	527	476	6063	
MONMOUTH	Monmouth North	CPS	167	162	149	174	152	118	107	159	165	133	158	190	128	1962
		CWS	60	58	56	61	34	36	36	61	62	42	49	64	49	668
		Total	227	220	205	235	186	154	143	220	227	175	207	254	177	2630
	Monmouth South	CPS	123	159	137	160	113	112	91	149	149	151	100	145	114	1703
		CWS	34	48	34	51	42	36	43	41	50	54	45	34	42	554
		Total	157	207	171	211	155	148	134	190	199	205	145	179	156	2257
	County Totals	CPS	290	321	286	334	265	230	198	308	314	284	258	335	242	3665
		CWS	94	106	90	112	76	72	79	102	112	96	94	98	91	1222
		Total	384	427	376	446	341	302	277	410	426	380	352	433	333	4887
MORRIS	Morris East	CPS	64	73	71	94	66	79	74	75	100	84	91	84	75	1030
		CWS	32	34	32	29	25	24	20	24	42	19	37	49	22	389
		Total	96	107	103	123	91	103	94	99	142	103	128	133	97	1419
	Morris West	CPS	63	97	103	107	77	75	74	84	118	92	89	89	82	1150
		CWS	32	41	34	26	31	26	18	32	32	29	25	42	36	404
		Total	95	138	137	133	108	101	92	116	150	121	114	131	118	1554
	County Totals	CPS	127	170	174	201	143	154	148	159	218	176	180	173	157	2180
		CWS	64	75	66	55	56	50	38	56	74	48	62	91	58	793
		Total	191	245	240	256	199	204	186	215	292	224	242	264	215	2973
OCEAN	Ocean North	CPS	133	161	167	166	144	163	143	154	203	178	163	165	157	2097
		CWS	43	44	40	69	51	34	38	40	68	60	46	65	48	646
		Total	176	205	207	235	195	197	181	194	271	238	209	230	205	2743
	Ocean South	CPS	146	174	146	149	167	124	135	160	166	170	160	147	147	1991
		CWS	42	41	44	43	36	36	55	32	45	42	39	51	30	536
		Total	188	215	190	192	203	160	190	192	211	212	199	198	177	2527
	County Totals	CPS	279	335	313	315	311	287	278	314	369	348	323	312	304	4088
		CWS	85	85	84	112	87	70	93	72	113	102	85	116	78	1182
		Total	364	420	397	427	398	357	371	386	482	450	408	428	382	5270
PASSAIC	Passaic Central	CPS	171	171	178	243	163	108	128	164	207	177	157	192	160	2219
		CWS	75	74	62	87	54	43	51	55	93	66	68	66	59	853
		Total	246	245	240	330	217	151	179	219	300	243	225	258	219	3072
	Passaic North	CPS	135	166	152	185	143	104	147	128	189	158	146	148	124	1925
		CWS	75	58	56	56	63	52	57	74	78	60	67	76	51	823
		Total	210	224	208	241	206	156	204	202	267	218	213	224	175	2748
	County Totals	CPS	306	337	330	428	306	212	275	292	396	335	303	340	284	4144
		CWS	150	132	118	143	117	95	108	129	171	126	135	142	110	1676
		Total	456	469	448	571	423	307	383	421	567	461	438	482	394	5820
SALEM	Salem	CPS	56	79	77	73	62	52	56	73	68	53	53	77	50	829
		CWS	12	20	15	17	17	13	21	31	22	19	17	20	21	245
		Total	68	99	92	90	79	65	77	104	90	72	70	97	71	1074
	County Totals	CPS	56	79	77	73	62	52	56	73	68	53	53	77	50	829
		CWS	12	20	15	17	17	13	21	31	22	19	17	20	21	245
		Total	68	99	92	90	79	65	77	104	90	72	70	97	71	1074
SOMERSET	Somerset	CPS	127	115	140	136	155	106	93	125	153	137	128	122	122	1659
		CWS	30	64	34	44	34	35	35	30	47	44	37	38	36	508
		Total	157	179	174	180	189	141	128	155	200	181	165	160	158	2167
	County Totals	CPS	127	115	140	136	155	106	93	125	153	137	128	122	122	1659
		Total	157	179	174	180	189	141	128	155	200	181	165	160	158	2167

Data in this report is preliminary and may differ from any final report. This report is produced to ensure continuous quality improvement throughout DCF.

Table 5: Monthly Count of CPS Reports and CWS Referrals Assigned to CP&P Local Offices

County	Local Office	Type of Referral													Total	
			Feb 2018	Mar 2018	Apr 2018	May 2018	Jun 2018	Jul 2018	Aug 2018	Sep 2018	Oct 2018	Nov 2018	Dec 2018	Jan 2019		Feb 2019
SUSSEX	Sussex	CPS	64	70	90	87	94	62	60	72	90	64	67	77	88	985
		CWS	26	32	34	25	24	20	22	27	30	17	30	23	34	344
		Total	90	102	124	112	118	82	82	99	120	81	97	100	122	1329
	County Totals	CPS	64	70	90	87	94	62	60	72	90	64	67	77	88	985
		CWS	26	32	34	25	24	20	22	27	30	17	30	23	34	344
		Total	90	102	124	112	118	82	82	99	120	81	97	100	122	1329
UNION	Union Central	CPS	89	87	88	98	78	67	54	76	98	85	81	104	87	1092
		CWS	36	29	25	28	25	23	21	25	33	26	34	43	27	375
		Total	125	116	113	126	103	90	75	101	131	111	115	147	114	1467
	Union East	CPS	91	98	74	89	92	63	48	89	103	93	94	94	104	1132
		CWS	32	33	26	27	32	24	21	34	36	29	26	35	38	393
		Total	123	131	100	116	124	87	69	123	139	122	120	129	142	1525
	Union West	CPS	84	83	81	98	91	58	54	77	84	88	83	98	79	1058
		CWS	34	22	27	39	25	25	23	27	42	30	25	27	24	370
		Total	118	105	108	137	116	83	77	104	126	118	108	125	103	1428
	County Totals	CPS	264	268	243	285	261	188	156	242	285	266	258	296	270	3282
		CWS	102	84	78	94	82	72	65	86	111	85	85	105	89	1138
		Total	366	352	321	379	343	260	221	328	396	351	343	401	359	4420
WARREN	Warren	CPS	72	85	88	93	85	59	82	86	78	71	77	61	54	991
		CWS	29	32	20	24	25	28	23	32	27	22	27	28	19	336
		Total	101	117	108	117	110	87	105	118	105	93	104	89	73	1327
	County Totals	CPS	72	85	88	93	85	59	82	86	78	71	77	61	54	991
		CWS	29	32	20	24	25	28	23	32	27	22	27	28	19	336
		Total	101	117	108	117	110	87	105	118	105	93	104	89	73	1327
County CPS Referral Total		CPS	4,392	4,908	4,929	5,469	4,611	3,755	3,825	4,461	5,418	4,653	4,587	5,091	4,502	60,601
County CWS Referral Total		CWS	1,523	1,668	1,550	1,764	1,554	1,253	1,355	1,578	1,942	1,570	1,473	1,792	1,580	20,602
County Referral Total		Total	5,915	6,576	6,479	7,233	6,165	5,008	5,180	6,039	7,360	6,223	6,060	6,883	6,082	81,203
Central Region IAIU	CPS	58	63	62	89	64	40	57	39	67	63	47	61	47	757	
	CWS	0	0	0	0	0	0	0	0	0	0	0	0	0	0	
	Total	58	63	62	89	64	40	57	39	67	63	47	61	47	757	
Metro Region IAIU	CPS	63	48	52	78	60	40	38	50	65	61	51	55	47	708	
	CWS	0	0	0	0	0	0	0	0	0	0	0	0	0	0	
	Total	63	48	52	78	60	40	38	50	65	61	51	55	47	708	
Northern Region IAIU	CPS	53	53	69	88	60	42	34	63	71	70	64	58	74	799	
	CWS	0	0	0	0	0	0	0	0	0	0	0	0	0	0	
	Total	53	53	69	88	60	42	34	63	71	70	64	58	74	799	
Southern Region IAIU	CPS	75	74	86	95	71	61	76	67	100	58	71	92	70	996	
	CWS	0	0	0	0	0	0	0	0	0	0	0	0	0	0	
	Total	75	74	86	95	71	61	76	67	100	58	71	92	70	996	
IAIU CPS Subtotal		CPS	249	238	269	350	255	183	205	219	303	252	233	266	238	3,260
IAIU CWS Subtotal		CWS	0	0	0	0	0	0	0	0	0	0	0	0	0	0
IAIU Subtotal		Total	249	238	269	350	255	183	205	219	303	252	233	266	238	3,260
County and IAIU CPS Subtotal		CPS	4,641	5,146	5,198	5,819	4,866	3,938	4,030	4,680	5,721	4,905	4,820	5,357	4,740	63,861
County and IAIU CWS Subtotal		CWS	1,523	1,668	1,550	1,764	1,554	1,253	1,355	1,578	1,942	1,570	1,473	1,792	1,580	20,602
Unable to Determine ⁽¹⁾		Total	407	122	125	169	137	128	122	123	135	117	121	149	119	1,974
Other Offices		Total	6	3	3	4	6	0	3	1	3	1	4	3	0	37
Grand Total		Total	6,577	6,939	6,876	7,756	6,563	5,319	5,510	6,382	7,801	6,593	6,418	7,301	6,439	86,474

⁽¹⁾CPS Reports or CWS Referrals not assigned to an office through the Assignment Designee, but were assigned to an office for an assessment or investigation.