



Child Protection and Permanency

Monthly Screening and Investigation Report February 2021

Christine Norbut Beyer, MSW
Commissioner



Table of Contents

Table 1: NJ State Central Registry Activity: Monthly Child Abuse and Neglect Hotline Calls, Intakes and Assignments to Child Protection & Permanency (CP&P) Offices

Chart 1: CP&P Annual Trends in Child Protection Services (CPS) Reports and Child Welfare Services (CWS) Referrals

Table 2: Assignments to CP&P Offices: CPS Reports and CWS Referrals

Table 3: Source of CPS Reports and CWS Referrals

Table 4: Monthly Count of CPS Reports and CWS Referrals Assigned to Counties

Table 5: Monthly Count of CPS Reports and CWS Referrals Assigned to CP&P Local Offices

Table 1: NJ State Central Registry Activity: Monthly Child Abuse and Neglect Hotline Calls, Intakes and Assignments to CP&P Offices^{1,2,7}

2019-2020	Hotline Call Activity				Intakes Recorded in NJ SPIRIT ^{6,8}														Assignments to CP&P Offices				
	Total Calls to SCR ³	Abandon Calls ⁴	Average Time to Answer (seconds)	Resulting NJS Intakes ⁵	CPS Reports		CWS Referrals		No Action Required (NAR)		Related Information (RI)		Information & Referral (I&R)		Information Only (IO)		Unusual Incident (UIRS)		CPS Reports		CWS Referrals		Total
					n	%	n	%	n	%	n	%	n	%	n	%	n	%	n	%	n	%	
February 2020	14,714	1,744	150	14,684	5,380	36.6%	1,625	11.1%	226	1.5%	3,605	24.6%	1,854	12.6%	1,994	13.6%	0	0.0%	5,380	76.8%	1,624	23.2%	7,004
March 2020	12,263	1,262	11	12,398	4,171	33.6%	1,063	8.6%	199	1.6%	3,075	24.8%	1,885	15.2%	2,005	16.2%	5	0.0%	4,172	79.7%	1,065	20.3%	5,237
April 2020	7,500	548	76	7,917	2,149	27.1%	407	5.1%	196	2.5%	1,852	23.4%	1,866	23.6%	1,447	18.3%	0	0.0%	2,149	84.1%	407	15.9%	2,556
May 2020	9,654	1,808	249	9,402	2,897	30.8%	537	5.7%	137	1.5%	2,342	24.9%	1,974	21.0%	1,515	16.1%	0	0.0%	2,897	84.4%	537	15.6%	3,434
June 2020	10,871	3,782	305	9,131	3,045	33.3%	636	7.0%	133	1.5%	2,281	25.0%	1,554	17.0%	1,482	16.2%	0	0.0%	3,045	82.7%	636	17.3%	3,681
July 2020	11,649	1,628	237	11,499	3,628	31.6%	738	6.4%	145	1.3%	2,892	25.2%	1,815	15.8%	2,281	19.8%	0	0.0%	3,628	83.1%	738	16.9%	4,366
August 2020	11,248	1,493	232	11,204	3,569	31.9%	821	7.3%	164	1.5%	2,993	26.7%	1,649	14.7%	2,008	17.9%	0	0.0%	3,569	81.3%	822	18.7%	4,391
September 2020	12,277	1,495	203	12,505	4,153	33.2%	1,031	8.2%	246	2.0%	3,097	24.8%	2,046	16.4%	1,932	15.4%	0	0.0%	4,153	80.1%	1,030	19.9%	5,183
October 2020	13,118	1,258	183	13,320	4,257	32.0%	867	6.5%	191	1.4%	3,220	24.2%	2,709	20.3%	2,076	15.6%	0	0.0%	4,257	83.1%	868	16.9%	5,125
November 2020	10,789	1,462	183	10,930	3,564	32.6%	670	6.1%	141	1.3%	2,608	23.9%	2,159	19.8%	1,788	16.4%	0	0.0%	3,564	84.2%	670	15.8%	4,234
December 2020	9,618	1,385	238	10,567	3,517	33.3%	681	6.4%	149	1.4%	2,345	22.2%	2,123	20.1%	1,752	16.6%	0	0.0%	3,517	83.8%	681	16.2%	4,198
January 2021	11,339	1,452	199	12,032	4,018	33.4%	794	6.6%	190	1.6%	2,818	23.4%	2,324	19.3%	1,888	15.7%	0	0.0%	4,018	83.5%	794	16.5%	4,812
February 2021	11,060	966	186	11,302	3,767	33.3%	655	5.8%	167	1.5%	2,499	22.1%	2,394	21.2%	1,820	16.1%	0	0.0%	3,767	85.2%	655	14.8%	4,422
	11,238	1,560	189	11,299	3,701	32.8%	810	7.2%	176	1.6%	2,741	24.3%	2,027	17.9%	1,845	16.3%	0	0.0%	3,701	82.0%	810	18.0%	4,511
Overall Total	146,100	20,283		146,891	48,115		10,525		2,284		35,627		26,352		23,988		5		48,116	82.0%	10,527	18.0%	58,643

¹Comes from three distinct sources: (1) the Automatic Call Distribution (ACD) phone system; which keeps a count of the number of calls and call routing; (2) Monthly NJSpirit Intakes; which record decision making on calls received by hotline screeners, and (3) NJSpirit extracts of assigned CWS Referrals and CPS Reports.

²The number of Intakes, CPS Reports, and CWS Referrals are based on an extract from NJSpirit.

Data extracted by the Office of Research, Evaluation, and Reporting on **March 08, 2021** includes all Intakes, CPS Reports, and CWS Referrals received from **February 01, 2021** through **February 28, 2021**.

³The number calls received through the ACD System that were directed to a screener from any call-in phone number.

⁴The number of calls received through the ACD System that are abandoned either while waiting in queue or while ringing.

⁵The number of Intakes entered in NJSpirit from the number of calls received.

⁶The number of Intakes recorded in NJSpirit, by type of Intake. There is not a one-to-one relationship between an ACD call and an Intake; multiple calls to State Central Registry (SCR) may result in a single Intake, or one call may result in multiple Intakes.

⁷Intake: The process of documenting: a report of alleged abuse or neglect of a child (CPS); a request for services on behalf of a child, or a referral of a child for services (CWS); a call in which the caller provides additional or clarifying information about a current service case or active investigation (RI); informing a caller of, or referring a caller to, services available from other private or public sources (I&R); a call that requires no action by CP&P (NAR); or a response to a simple inquiry (IO).

CP&P Annual Trends in CPS Reports and CWS Referrals

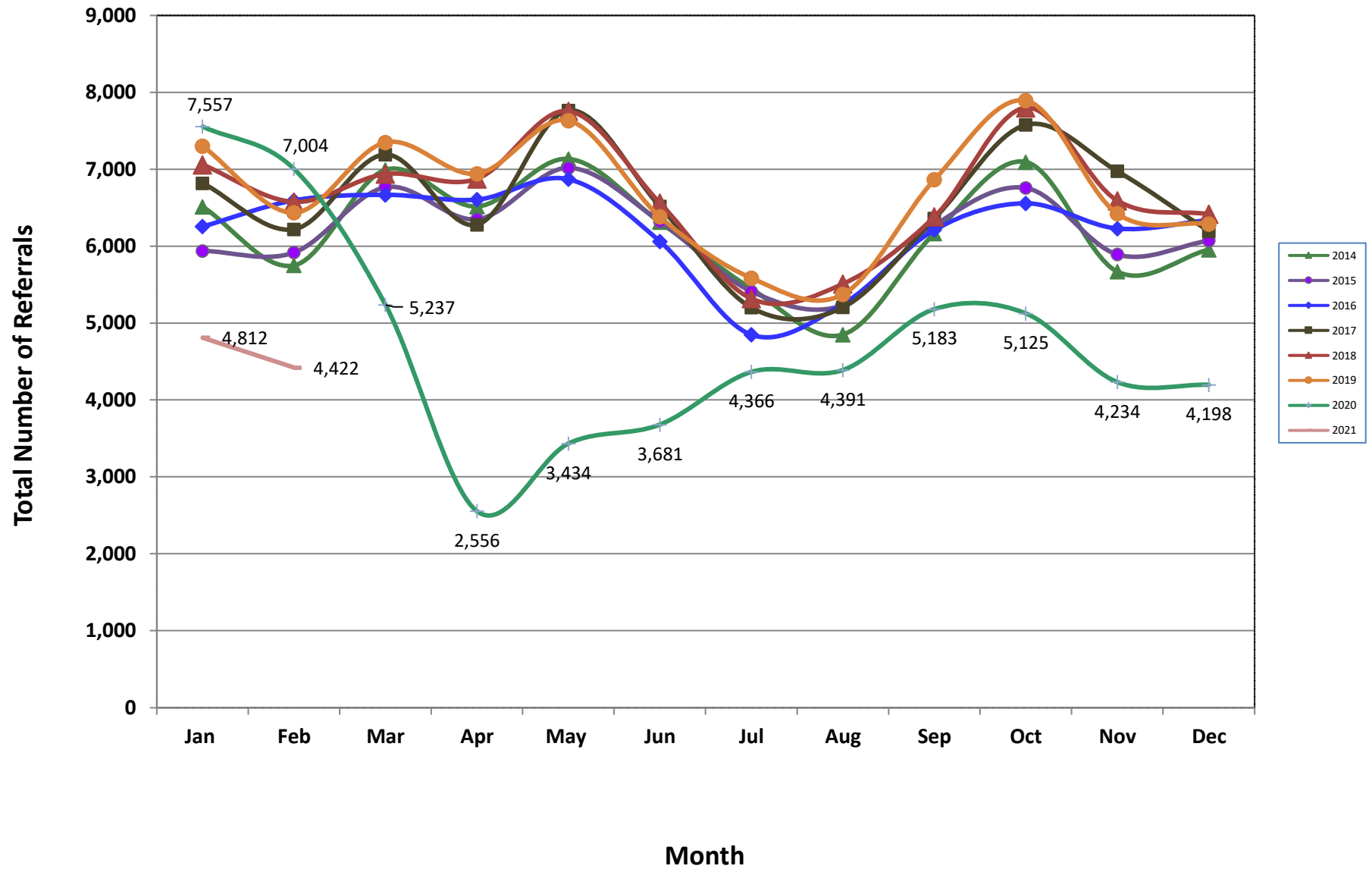


Table 2: Assignments to CP&P Offices: CPS Reports and CWS Referrals¹

Intake Date ³		CPS Reports ²	CWS Referrals ²	Total Assignments ²
2016	Jan 2016	4,686	1,571	6,257
	Feb 2016	4,974	1,622	6,596
	Mar 2016	5,000	1,669	6,669
	Apr 2016	5,065	1,542	6,607
	May 2016	5,238	1,633	6,871
	Jun 2016	4,602	1,461	6,063
	Jul 2016	3,663	1,187	4,850
	Aug 2016	3,941	1,307	5,248
	Sep 2016	4,654	1,559	6,213
	Oct 2016	4,935	1,622	6,557
	Nov 2016	4,677	1,552	6,229
	Dec 2016	4,762	1,580	6,342
	Total	56,197	18,305	74,502
2017	Jan 2017	5,111	1,708	6,819
	Feb 2017	4,716	1,504	6,220
	Mar 2017	5,349	1,843	7,192
	Apr 2017	4,790	1,490	6,280
	May 2017	5,847	1,919	7,766
	Jun 2017	4,853	1,665	6,518
	Jul 2017	3,814	1,389	5,203
	Aug 2017	3,866	1,340	5,206
	Sep 2017	4,719	1,643	6,362
	Oct 2017	5,613	1,966	7,579
	Nov 2017	5,223	1,753	6,976
	Dec 2017	4,601	1,594	6,195
	Total	58,502	19,814	78,316
2018	Jan 2018	5,276	1,784	7,060
	Feb 2018	4,933	1,644	6,577
	Mar 2018	5,212	1,727	6,939
	Apr 2018	5,275	1,601	6,876
	May 2018	5,920	1,836	7,756
	Jun 2018	4,948	1,615	6,563
	Jul 2018	4,011	1,308	5,319
	Aug 2018	4,102	1,408	5,510
	Sep 2018	4,748	1,634	6,382
	Oct 2018	5,790	2,011	7,801
	Nov 2018	4,973	1,620	6,593
	Dec 2018	4,891	1,527	6,418
	Total	60,079	19,715	79,794

Table 2: Assignments to CP&P Offices: CPS Reports and CWS Referrals¹

Intake Date ³		CPS Reports ²	CWS Referrals ²	Total Assignments ²
2019	Jan 2019	5,443	1,858	7,301
	Feb 2019	4,811	1,628	6,439
	Mar 2019	5,677	1,824	7,501
	Apr 2019	5,313	1,630	6,943
	May 2019	5,853	1,781	7,634
	Jun 2019	4,874	1,509	6,383
	Jul 2019	4,277	1,309	5,586
	Aug 2019	4,068	1,306	5,374
	Sep 2019	5,315	1,551	6,866
	Oct 2019	5,968	1,926	7,894
	Nov 2019	4,991	1,432	6,423
	Dec 2019	4,855	1,434	6,289
	Total	61,445	19,188	80,633
2020	Jan 2020	5,715	1,842	7,557
	Feb 2020	5,380	1,624	7,004
	Mar 2020	4,172	1,065	5,237
	Apr 2020	2,149	407	2,556
	May 2020	2,897	537	3,434
	Jun 2020	3,045	636	3,681
	Jul 2020	3,628	738	4,366
	Aug 2020	3,569	822	4,391
	Sep 2020	4,153	1,030	5,183
	Oct 2020	4,257	868	5,125
	Nov 2020	3,564	670	4,234
	Dec 2020	3,517	681	4,198
	Total	46,046	10,920	56,966
2021	Jan 2021	4,018	794	4,812
	Feb 2021	3,767	655	4,422
	Total	7,785	1,449	9,234
Grand Total		290,054	89,391	379,445

Table 3: Source of CPS Reports and CWS Referrals

CPS Reports and CWS Referrals	Source	Feb 2020	Mar 2020	Apr 2020	May 2020	Jun 2020	Jul 2020	Aug 2020	Sep 2020	Oct 2020	Nov 2020	Dec 2020	Jan 2021	Feb 2021		13 Month Total	
	School Staff	2,148	1,188	143	210	119	70	63	565	809	515	523	709	664	15%	7,726	13%
	Healthcare Provider	937	760	499	656	775	784	819	882	869	817	760	835	815	18%	10,208	17%
	Law Enforcement	1,349	1,197	792	1,086	1,140	1,440	1,372	1,400	1,303	1,147	1,092	1,226	1,122	25%	15,666	27%
	Government Agency	342	240	134	198	238	274	304	295	278	180	233	280	261	6%	3,257	6%
	Parent	435	395	219	281	326	400	395	431	351	330	355	374	302	7%	4,594	8%
	Relative/Friend/Neighbor	334	345	232	296	326	392	343	424	337	294	286	336	284	6%	4,229	7%
	Anonymous	603	437	222	284	294	416	425	502	525	386	400	442	415	9%	5,351	9%
	CP&P	74	67	28	31	42	47	104	95	98	72	82	62	61	1%	863	1%
	Court/Legal	162	104	40	59	50	80	81	99	86	77	81	99	91	2%	1,109	2%
	Community Group/Individual	279	199	111	143	157	193	171	177	163	141	132	168	152	3%	2,186	4%
	Facility Staff (incl Correctional Facility)	93	40	21	41	43	63	61	72	68	53	60	56	48	1%	719	1%
	Child (Self)	21	25	7	17	17	25	29	31	29	34	31	29	27	1%	322	1%
	Other	210	227	105	130	149	175	219	204	198	177	150	187	171	4%	2,302	4%
Daycare/Babysitter	17	13	3	2	5	7	5	6	11	11	13	9	9	0%	111	0%	
Total	7,004	5,237	2,556	3,434	3,681	4,366	4,391	5,183	5,125	4,234	4,198	4,812	4,422		58,643		

Table 4: Monthly Count of CPS Reports and CWS Referrals Assigned to Counties

County														Average Number of Assignments Last 13 Months	Jan 21 to Feb 21 Numerical Difference
	Feb 2020	Mar 2020	Apr 2020	May 2020	Jun 2020	Jul 2020	Aug 2020	Sep 2020	Oct 2020	Nov 2020	Dec 2020	Jan 2021	Feb 2021		
Atlantic	298	244	121	161	180	214	195	243	256	181	199	205	185	206	-20
Bergen	418	281	145	189	194	232	233	300	319	255	245	276	289	260	13
Burlington	368	256	133	181	185	231	237	271	278	224	224	230	232	235	2
Camden	581	437	216	305	325	362	345	433	443	337	356	420	432	384	12
Cape May	58	70	33	50	66	72	65	87	61	72	61	70	73	64	3
Cumberland	216	171	96	116	130	145	131	165	167	147	147	141	154	148	13
Essex	735	525	249	364	366	440	486	538	500	419	416	458	452	458	-6
Gloucester	297	221	111	160	177	198	192	232	214	186	202	197	176	197	-21
Hudson	449	347	137	226	199	282	268	274	325	234	296	301	243	275	-58
Hunterdon	48	39	22	30	24	33	40	42	38	36	29	46	42	36	-4
Mercer	279	210	106	144	164	197	187	234	207	193	194	201	184	192	-17
Middlesex	475	405	205	231	283	310	321	344	356	286	303	356	295	321	-61
Monmouth	381	301	166	196	233	263	267	302	311	254	237	304	289	270	-15
Morris	273	194	85	124	137	152	150	202	198	164	148	182	139	165	-43
Ocean	446	355	177	257	264	336	278	349	319	294	290	321	291	306	-30
Passaic	460	353	143	213	219	267	250	321	312	255	225	328	243	276	-85
Salem	82	75	35	44	53	56	48	56	68	67	53	71	64	59	-7
Somerset	189	126	66	92	82	114	101	155	130	123	106	114	120	117	6
Sussex	116	73	47	48	51	86	73	92	101	74	46	63	73	73	10
Union	383	246	137	147	190	181	225	261	253	189	210	256	218	223	-38
Warren	101	65	54	50	56	75	77	86	98	67	66	93	70	74	-23
County Subtotals	6,653	4,994	2,484	3,328	3,578	4,246	4,169	4,987	4,954	4,057	4,053	4,633	4,264	4,338	-369
Central Region IAIU	64	34	10	6	23	17	17	26	23	23	13	28	20	23	-8
Metro Region IAIU	69	33	3	11	2	13	13	8	14	16	11	12	11	17	-1
Northern Region IAIU	42	44	6	12	10	14	12	11	10	11	8	18	14	16	-4
Southern Region IAIU	61	51	12	18	20	23	30	25	28	23	26	33	34	30	1
IAIU Subtotals	236	162	31	47	55	67	72	70	75	73	58	91	79	86	-12
¹ Unable to Determine	113	79	39	59	48	51	149	126	93	103	85	85	79	85	-6
Other Offices	2	2	2	0	0	2	1	0	3	1	2	3	0	1	-3
Grand Total	7,004	5,237	2,556	3,434	3,681	4,366	4,391	5,183	5,125	4,234	4,198	4,812	4,422	4,511	-390

¹CPS Reports or CWS Referrals not assigned to an office through the Assignment Designee, but were assigned to an office for an assessment or investigation.



Table 5: Monthly Count of CPS Reports and CWS Referrals Assigned to CP&P Local Offices

County	Local Office	Type of Referral														Total	
			Feb 2020	Mar 2020	Apr 2020	May 2020	Jun 2020	Jul 2020	Aug 2020	Sep 2020	Oct 2020	Nov 2020	Dec 2020	Jan 2021	Feb 2021		
ATLANTIC	Atlantic East	CPS	116	115	55	70	82	96	100	109	110	76	87	95	98	1,209	
		CWS	55	30	9	16	25	24	22	32	17	13	16	17	14		
		Total	171	145	64	86	107	120	122	141	127	89	103	112	112		1,499
	Atlantic West	CPS	95	82	50	64	57	75	64	88	107	79	82	76	63	982	
		CWS	32	17	7	11	16	19	9	14	22	13	14	17	10		
		Total	127	99	57	75	73	94	73	102	129	92	96	93	73		1,183
	County Totals	CPS	211	197	105	134	139	171	164	197	217	155	169	171	161	2,191	
		CWS	87	47	16	27	41	43	31	46	39	26	30	34	24		
		Total	298	244	121	161	180	214	195	243	256	181	199	205	185		2,682
BERGEN	Bergen Central	CPS	135	81	55	66	66	85	85	89	105	70	80	101	96	1,114	
		CWS	47	24	12	13	21	14	12	31	33	19	15	23	25		
		Total	182	105	67	79	87	99	97	120	138	89	95	124	121		1,403
	Bergen South	CPS	179	126	67	90	92	104	118	144	156	138	119	127	140	1,600	
		CWS	57	50	11	20	15	29	18	36	25	28	31	25	28		
		Total	236	176	78	110	107	133	136	180	181	166	150	152	168		1,973
	County Totals	CPS	314	207	122	156	158	189	203	233	261	208	199	228	236	2,714	
		CWS	104	74	23	33	36	43	30	67	58	47	46	48	53		
		Total	418	281	145	189	194	232	233	300	319	255	245	276	289		3,376
BURLINGTON	Burlington East	CPS	142	99	55	74	95	80	101	100	126	95	104	92	111	1,274	
		CWS	40	22	12	17	11	29	17	30	19	16	13	21	19		
		Total	182	121	67	91	106	109	118	130	145	111	117	113	130		1,540
	Burlington West	CPS	141	106	51	76	68	99	95	117	108	93	87	89	87	1,217	
		CWS	45	29	15	14	11	23	24	24	25	20	20	28	15		
		Total	186	135	66	90	79	122	119	141	133	113	107	117	102		1,510
	County Totals	CPS	283	205	106	150	163	179	196	217	234	188	191	181	198	2,491	
		CWS	85	51	27	31	22	52	41	54	44	36	33	49	34		
		Total	368	256	133	181	185	231	237	271	278	224	224	230	232		3,050
CAMDEN	Camden Central	CPS	119	99	40	68	86	74	69	87	99	79	79	100	85	1,084	
		CWS	29	14	12	11	15	21	18	20	18	14	17	20	17		
		Total	148	113	52	79	101	95	87	107	117	93	96	120	102		1,310
	Camden East	CPS	102	82	45	54	59	67	78	98	101	64	79	93	88	1,010	
		CWS	32	16	7	8	14	18	15	19	13	13	15	13	20		
		Total	134	98	52	62	73	85	93	117	114	77	94	106	108		1,213
	Camden North	CPS	117	96	39	56	71	81	63	85	86	62	59	81	107	1,003	
		CWS	28	26	9	15	12	13	18	20	19	19	12	17	15		
		Total	145	122	48	71	83	94	81	105	105	81	71	98	122		1,226
	Camden South	CPS	122	82	54	73	59	71	67	84	96	75	78	77	93	1,031	
		CWS	32	22	10	20	9	17	17	20	11	11	17	19	7		
		Total	154	104	64	93	68	88	84	104	107	86	95	96	100		1,243
	County Totals	CPS	460	359	178	251	275	293	277	354	382	280	295	351	373	4,128	
		CWS	121	78	38	54	50	69	68	79	61	57	61	69	59		
		Total	581	437	216	305	325	362	345	433	443	337	356	420	432		4,992
CAPE MAY	Cape May	CPS	42	56	29	37	55	58	52	75	52	60	52	59	686		
		CWS	16	14	4	13	11	14	13	12	9	12	9	11		14	
		Total	58	70	33	50	66	72	65	87	61	72	61	70		73	838
	County Totals	CPS	42	56	29	37	55	58	52	75	52	60	52	59	59	686	
		CWS	16	14	4	13	11	14	13	12	9	12	9	11	14		
		Total	58	70	33	50	66	72	65	87	61	72	61	70	73		838
CUMBERLAND	Cumberland East	CPS	52	44	24	40	44	37	43	49	61	46	41	45	41	567	
		CWS	12	11	10	8	6	6	6	6	6	12	8	5	17		7
		Total	64	55	34	48	50	43	49	55	73	54	46	62	48		681
	Cumberland West	CPS	121	91	53	56	66	91	70	89	77	76	78	68	91	1,027	
		CWS	31	25	9	12	14	11	12	21	17	17	23	11	15		
		Total	152	116	62	68	80	102	82	110	94	93	101	79	106		1,245
	County Totals	CPS	173	135	77	96	110	128	113	138	138	122	119	113	132	1,594	
		CWS	43	36	19	20	20	17	18	27	29	25	28	28	22		
		Total	216	171	96	116	130	145	131	165	167	147	147	141	154		1,926

Data in this report is preliminary and may differ from any final report. This report is produced to ensure continuous quality improvement throughout DCF.

Table 5: Monthly Count of CPS Reports and CWS Referrals Assigned to CP&P Local Offices

County	Local Office	Type of Referral	2020														Total
			Feb 2020	Mar 2020	Apr 2020	May 2020	Jun 2020	Jul 2020	Aug 2020	Sep 2020	Oct 2020	Nov 2020	Dec 2020	Jan 2021	Feb 2021		
ESSEX	Essex Central	CPS	99	71	58	60	58	61	67	69	76	59	66	81	80	905	
		CWS	36	21	6	8	8	20	17	17	15	14	10	24	13	209	
		Total	135	92	64	68	66	81	84	86	91	73	76	105	93	1,114	
	Essex North	CPS	92	50	24	28	39	47	42	45	50	48	44	38	58	605	
		CWS	26	19	2	18	8	9	9	21	16	3	13	8	12	164	
		Total	118	69	26	46	47	56	51	66	66	51	57	46	70	769	
	Essex South	CPS	64	65	22	32	46	40	54	53	48	42	38	57	71	632	
		CWS	24	14	7	7	10	11	16	14	12	8	10	14	13	160	
		Total	88	79	29	39	56	51	70	67	60	50	48	71	84	792	
	Newark Center City	CPS	114	74	33	59	53	73	69	99	76	75	73	61	70	929	
		CWS	33	17	8	12	6	16	12	18	10	12	8	10	5	167	
		Total	147	91	41	71	59	89	81	117	86	87	81	71	75	1096	
	Newark Northeast	CPS	95	77	38	47	55	58	62	72	72	47	50	62	54	789	
		CWS	25	19	7	5	17	15	17	17	22	13	14	13	9	193	
Total		120	96	45	52	72	73	79	89	94	60	64	75	63	982		
Newark South	CPS	94	74	38	69	50	72	93	91	84	83	76	74	56	954		
	CWS	33	24	6	19	16	18	28	22	19	15	14	16	11	241		
	Total	127	98	44	88	66	90	121	113	103	98	90	90	67	1195		
County Totals	CPS	558	411	213	295	301	351	387	429	406	354	347	373	389	4814		
	CWS	177	114	36	69	65	89	99	109	94	65	69	85	63	1134		
	Total	735	525	249	364	366	440	486	538	500	419	416	458	452	5948		
GLOUCESTER	Gloucester East	CPS	110	90	47	67	71	79	75	83	73	79	83	65	62	984	
		CWS	32	16	9	7	14	15	15	14	14	11	6	18	13	184	
		Total	142	106	56	74	85	94	90	97	87	90	89	83	75	1168	
	Gloucester West	CPS	117	88	45	76	75	87	88	112	108	82	95	98	89	1160	
		CWS	38	27	10	10	17	17	14	23	19	14	18	16	12	235	
		Total	155	115	55	86	92	104	102	135	127	96	113	114	101	1395	
	County Totals	CPS	227	178	92	143	146	166	163	195	181	161	178	163	151	2144	
		CWS	70	43	19	17	31	32	29	37	33	25	24	34	25	419	
Total		297	221	111	160	177	198	192	232	214	186	202	197	176	2563		
HUDSON	Hudson Central	CPS	99	88	37	69	62	81	74	75	90	71	98	84	68	996	
		CWS	37	32	12	12	19	21	19	21	32	15	18	25	6	269	
		Total	136	120	49	81	81	102	93	96	122	86	116	109	74	1265	
	Hudson North	CPS	85	66	23	42	34	56	46	53	45	45	47	58	55	655	
		CWS	25	15	10	13	12	14	15	16	14	9	10	13	15	181	
		Total	110	81	33	55	46	70	61	69	59	54	57	71	70	836	
	Hudson South	CPS	62	44	11	31	23	36	40	31	48	21	29	35	25	436	
		CWS	13	12	5	8	7	10	7	7	6	12	8	10	7	112	
		Total	75	56	16	39	30	46	47	38	54	33	37	45	32	548	
	Hudson West	CPS	100	65	34	45	35	47	55	58	65	53	69	65	55	746	
		CWS	28	25	5	6	7	17	12	13	25	8	17	11	12	186	
		Total	128	90	39	51	42	64	67	71	90	61	86	76	67	932	
	County Totals	CPS	346	263	105	187	154	220	215	217	248	190	243	242	203	2833	
		CWS	103	84	32	39	45	62	53	57	77	44	53	59	40	748	
Total		449	347	137	226	199	282	268	274	325	234	296	301	243	3581		
HUNTERDON	Hunterdon	CPS	37	30	20	27	20	29	34	31	31	28	23	38	38	386	
		CWS	11	9	2	3	4	4	6	11	7	8	6	8	4	83	
		Total	48	39	22	30	24	33	40	42	38	36	29	46	42	469	
	County Totals	CPS	37	30	20	27	20	29	34	31	31	28	23	38	38	386	
		CWS	11	9	2	3	4	4	6	11	7	8	6	8	4	83	
Total	48	39	22	30	24	33	40	42	38	36	29	46	42	469			
MERCER	Mercer North	CPS	108	89	45	50	76	87	78	101	78	83	86	91	81	1053	
		CWS	41	17	14	16	11	16	15	17	20	21	16	13	11	228	
		Total	149	106	59	66	87	103	93	118	98	104	102	104	92	1281	
	Mercer South	CPS	102	85	36	65	65	81	78	92	94	75	74	71	72	990	
		CWS	28	19	11	13	12	13	16	24	15	14	18	26	20	229	
		Total	130	104	47	78	77	94	94	116	109	89	92	97	92	1219	
	County Totals	CPS	210	174	81	115	141	168	156	193	172	158	160	162	153	2043	
CWS		69	36	25	29	23	29	31	41	35	35	34	39	31	457		
Total	279	210	106	144	164	197	187	234	207	193	194	201	184	2500			

Data in this report is preliminary and may differ from any final report. This report is produced to ensure continuous quality improvement throughout DCF.

Table 5: Monthly Count of CPS Reports and CWS Referrals Assigned to CP&P Local Offices

County	Local Office	Type of Referral														Total
			Feb 2020	Mar 2020	Apr 2020	May 2020	Jun 2020	Jul 2020	Aug 2020	Sep 2020	Oct 2020	Nov 2020	Dec 2020	Jan 2021	Feb 2021	
MIDDLESEX	Middlesex Central	CPS	109	94	64	62	68	67	66	73	87	65	71	104	73	1003
		CWS	31	23	10	6	10	11	12	19	18	11	19	14	17	201
		Total	140	117	74	68	78	78	78	92	105	76	90	118	90	1204
	Middlesex Coastal	CPS	135	131	54	69	95	109	116	105	120	91	89	95	84	1293
		CWS	32	35	14	12	15	17	20	16	15	13	11	18	13	231
		Total	167	166	68	81	110	126	136	121	135	104	100	113	97	1524
	Middlesex West	CPS	125	97	58	75	79	84	88	102	96	90	93	106	91	1184
		CWS	43	25	5	7	16	22	19	29	20	16	20	19	17	258
		Total	168	122	63	82	95	106	107	131	116	106	113	125	108	1442
	County Totals	CPS	369	322	176	206	242	260	270	280	303	246	253	305	248	3480
		CWS	106	83	29	25	41	50	51	64	53	40	50	51	47	690
		Total	475	405	205	231	283	310	321	344	356	286	303	356	295	4170
MONMOUTH	Monmouth North	CPS	154	134	84	98	106	123	118	128	149	127	102	139	149	1611
		CWS	42	37	10	18	22	26	27	33	23	15	20	24	21	318
		Total	196	171	94	116	128	149	145	161	172	142	122	163	170	1929
	Monmouth South	CPS	138	110	58	71	89	99	100	118	116	91	94	124	102	1310
		CWS	47	20	14	9	16	15	22	23	23	21	21	17	17	265
		Total	185	130	72	80	105	114	122	141	139	112	115	141	119	1575
	County Totals	CPS	292	244	142	169	195	222	218	246	265	218	196	263	251	2921
		CWS	89	57	24	27	38	41	49	56	46	36	41	41	38	583
		Total	381	301	166	196	233	263	267	302	311	254	237	304	289	3504
	MORRIS	Morris East	CPS	85	75	35	70	48	53	64	77	89	68	64	74	58
CWS			42	19	8	15	16	13	12	24	9	8	10	8	9	193
Total			127	94	43	85	64	66	76	101	98	76	74	82	67	1053
Morris West		CPS	115	75	39	34	58	75	53	87	80	75	66	90	65	912
		CWS	31	25	3	5	15	11	21	14	20	13	8	10	7	183
		Total	146	100	42	39	73	86	74	101	100	88	74	100	72	1095
County Totals		CPS	200	150	74	104	106	128	117	164	169	143	130	164	123	1772
		CWS	73	44	11	20	31	24	33	38	29	21	18	18	16	376
		Total	273	194	85	124	137	152	150	202	198	164	148	182	139	2148
OCEAN		Ocean North	CPS	196	150	81	133	121	147	121	147	150	126	129	166	139
	CWS		47	37	8	17	18	24	20	36	22	20	32	17	20	318
	Total		243	187	89	150	139	171	141	183	172	146	161	183	159	2124
	Ocean South	CPS	168	131	73	95	113	142	112	132	130	124	110	119	109	1558
		CWS	35	37	15	12	12	23	25	34	17	24	19	19	23	295
		Total	203	168	88	107	125	165	137	166	147	148	129	138	132	1853
	County Totals	CPS	364	281	154	228	234	289	233	279	280	250	239	285	248	3364
		CWS	82	74	23	29	30	47	45	70	39	44	51	36	43	613
		Total	446	355	177	257	264	336	278	349	319	294	290	321	291	3977
	PASSAIC	Passaic Central	CPS	180	154	55	87	102	102	86	124	134	118	92	134	102
CWS			63	44	17	24	25	18	22	30	28	12	13	33	21	350
Total			243	198	72	111	127	120	108	154	162	130	105	167	123	1820
Passaic North		CPS	160	124	60	84	70	123	108	137	123	107	104	134	102	1436
		CWS	57	31	11	18	22	24	34	30	27	18	16	27	18	333
		Total	217	155	71	102	92	147	142	167	150	125	120	161	120	1769
County Totals		CPS	340	278	115	171	172	225	194	261	257	225	196	268	204	2906
		CWS	120	75	28	42	47	42	56	60	55	30	29	60	39	683
		Total	460	353	143	213	219	267	250	321	312	255	225	328	243	3589
SALEM		Salem	CPS	58	64	31	37	40	45	39	44	56	60	48	62	56
	CWS		24	11	4	7	13	11	9	12	12	7	5	9	8	132
	Total		82	75	35	44	53	56	48	56	68	67	53	71	64	772
	County Totals	CPS	58	64	31	37	40	45	39	44	56	60	48	62	56	640
		CWS	24	11	4	7	13	11	9	12	12	7	5	9	8	132
		Total	82	75	35	44	53	56	48	56	68	67	53	71	64	772
SOMERSET	Somerset	CPS	151	103	57	78	69	98	84	117	116	109	94	101	104	1281
		CWS	38	23	9	14	13	16	17	38	14	14	12	13	16	237
		Total	189	126	66	92	82	114	101	155	130	123	106	114	120	1518
	County Totals	CPS	151	103	57	78	69	98	84	117	116	109	94	101	104	1281
		Total	189	126	66	92	82	114	101	155	130	123	106	114	120	1518



Table 5: Monthly Count of CPS Reports and CWS Referrals Assigned to CP&P Local Offices

County	Local Office	Type of Referral														Total	
			Feb 2020	Mar 2020	Apr 2020	May 2020	Jun 2020	Jul 2020	Aug 2020	Sep 2020	Oct 2020	Nov 2020	Dec 2020	Jan 2021	Feb 2021		
SUSSEX	Sussex	CPS	93	55	41	38	45	75	59	70	76	64	41	54	66	777	
		CWS	23	18	6	10	6	11	14	22	25	10	5	9	7	166	
		Total	116	73	47	48	51	86	73	92	101	74	46	63	73	943	
	County Totals	CPS	93	55	41	38	45	75	59	70	76	64	41	54	66	777	
		CWS	23	18	6	10	6	11	14	22	25	10	5	9	7	166	
UNION	Union Central	CPS	87	73	37	44	41	56	56	66	72	48	67	63	57	767	
		CWS	31	16	8	6	10	8	11	13	14	11	7	15	10	160	
		Total	118	89	45	50	51	64	67	79	86	59	74	78	67	927	
	Union East	CPS	97	54	35	44	50	46	84	66	52	51	57	72	73	781	
		CWS	40	19	5	4	15	7	16	16	19	10	10	19	5	185	
		Total	137	73	40	48	65	53	100	82	71	61	67	91	78	966	
	Union West	CPS	88	64	46	44	52	54	52	75	80	58	58	69	65	805	
		CWS	40	20	6	5	22	10	6	25	16	11	11	18	8	198	
		Total	128	84	52	49	74	64	58	100	96	69	69	87	73	1003	
	County Totals	CPS	272	191	118	132	143	156	192	207	204	157	182	204	195	2353	
		CWS	111	55	19	15	47	25	33	54	49	32	28	52	23	543	
		Total	383	246	137	147	190	181	225	261	253	189	210	256	218	2896	
	WARREN	Warren	CPS	77	55	46	43	40	64	66	70	85	59	57	84	57	803
			CWS	24	10	8	7	16	11	11	16	13	8	9	9	13	155
			Total	101	65	54	50	56	75	77	86	98	67	66	93	70	958
County Totals		CPS	77	55	46	43	40	64	66	70	85	59	57	84	57	803	
		CWS	24	10	8	7	16	11	11	16	13	8	9	9	13	155	
Total	101	65	54	50	56	75	77	86	98	67	66	93	70	958			
County CPS Referral Total		CPS	5,077	3,958	2,082	2,797	2,948	3,514	3,432	4,017	4,133	3,435	3,412	3,871	3,645	46,321	
County CWS Referral Total		CWS	1,576	1,036	402	531	630	732	737	970	821	622	641	762	619	10,079	
County Referral Total		Total	6,653	4,994	2,484	3,328	3,578	4,246	4,169	4,987	4,954	4,057	4,053	4,633	4,264	56,400	
Central Region IAIU		CPS	63	34	10	6	23	17	17	26	23	23	13	28	20	303	
		CWS	0	0	0	0	0	0	0	0	0	0	0	0	0	0	0
		Total	63	34	10	6	23	17	17	26	23	23	13	28	20	303	
Metro Region IAIU		CPS	69	33	3	11	2	13	13	8	14	16	11	12	11	216	
		CWS	0	0	0	0	0	0	0	0	0	0	0	0	0	0	0
		Total	69	33	3	11	2	13	13	8	14	16	11	12	11	216	
Northern Region IAIU		CPS	42	44	6	12	10	14	12	11	10	11	8	18	14	212	
		CWS	0	0	0	0	0	0	0	0	0	0	0	0	0	0	0
		Total	42	44	6	12	10	14	12	11	10	11	8	18	14	212	
Southern Region IAIU		CPS	61	51	12	18	20	23	30	25	28	23	26	33	34	384	
		CWS	0	0	0	0	0	0	0	0	0	0	0	0	0	0	0
		Total	61	51	12	18	20	23	30	25	28	23	26	33	34	384	
IAIU CPS Subtotal		CPS	235	162	31	47	55	67	72	70	75	73	58	91	79	1,115	
IAIU CWS Subtotal		CWS	0	0	0	0	0	0	0	0	0	0	0	0	0	0	
IAIU Subtotal		Total	235	162	31	47	55	67	72	70	75	73	58	91	79	1,115	
County and IAIU CPS Subtotal		CPS	5,312	4,120	2,113	2,844	3,003	3,581	3,504	4,087	4,208	3,508	3,470	3,962	3,724	47,436	
County and IAIU CWS Subtotal		CWS	1,576	1,036	402	531	630	732	737	970	821	622	641	762	619	10,079	
Unable to Determine(1)		Total	113	79	39	59	48	51	149	126	93	103	85	85	79	1,109	
Other Offices		Total	3	2	2	0	0	2	1	0	3	1	2	3	0	19	
Grand Total		Total	7,004	5,237	2,556	3,434	3,681	4,366	4,391	5,183	5,125	4,234	4,198	4,812	4,422	58,643	

(1) CPS Reports or CWS Referrals not assigned to an office through the Assignment Designee, but were assigned to an office for an assessment or investigation.