



## **Child Protection and Permanency**

# **Monthly Screening and Investigation Report February 2025**

Christine Norbut Beyer, MSW  
Commissioner

## Table of Contents

Table 1: NJ State Central Registry Activity: Monthly Child Abuse and Neglect Hotline Calls, Intakes and Assignments to Child Protection & Permanency (CP&P) Offices

---

Chart 1: CP&P Annual Trends in Child Protection Services (CPS) Reports and Child Welfare Services (CWS) Referrals

---

Table 2: Assignments to CP&P Offices: CPS Reports and CWS Referrals

---

Table 3: Source of CPS Reports and CWS Referrals

---

Table 4: Monthly Count of CPS Reports and CWS Referrals Assigned to Counties

---

Table 5: Monthly Count of CPS Reports and CWS Referrals Assigned to CP&P Local Offices

---



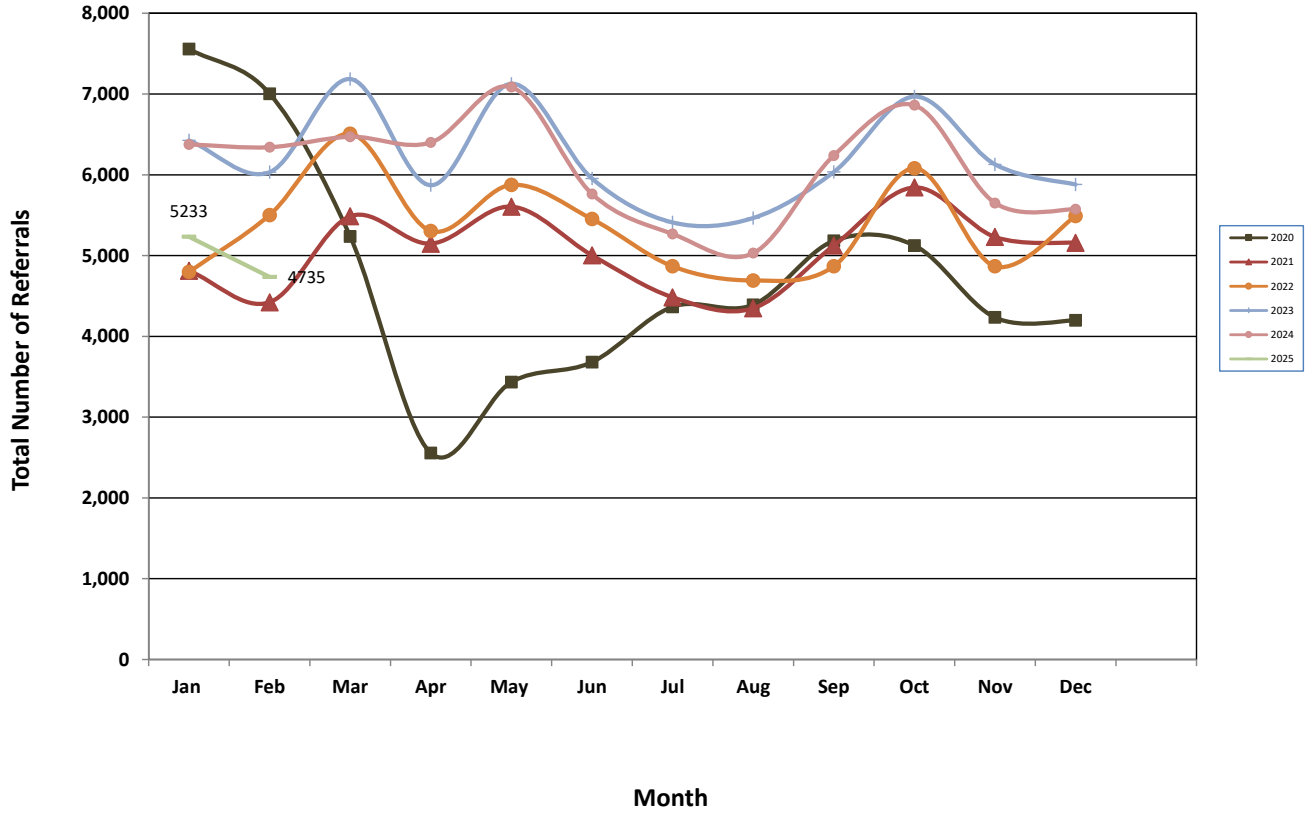
**Table 1: NJ State Central Registry Activity: Monthly Child Abuse and Neglect Hotline Calls, Intakes and Assignments to CP&P Offices<sup>1,2,7</sup>**

2024-2025	Hotline Call Activity				Intakes Recorded in NJ SPIRIT <sup>6,8</sup>													Assignments to CP&P Offices					
	Total Calls to SCR <sup>3</sup>	Abandon Calls <sup>4</sup>	Average Time to Answer (seconds)	Resulting NJS Intakes <sup>5</sup>	CPS Reports		CWS Referrals		No Action Required (NAR)		Related Information (RI)		Information & Referral (I&R)		Information Only (IO)		Unusual Incident (UIRS)		CPS Reports		CWS Referrals		Total
					n	%	n	%	n	%	n	%	n	%	n	%	n	%	n	%	n	%	
February 2024	13,854	1,086	100	14,452	5,260	36.4%	1,082	7.5%	158	1.1%	3,241	22.4%	3,044	21.1%	1,665	11.5%	2	0.0%	5,259	82.9%	1,082	17.1%	6,341
March 2024	14,126	1,230	115	14,694	5,390	36.7%	1,082	7.4%	149	1.0%	3,279	22.3%	3,061	20.8%	1,723	11.7%	10	0.1%	5,389	83.0%	1,082	17.0%	6,471
April 2024	13,711	1,221	106	14,246	5,332	37.4%	1,066	7.5%	177	1.2%	2,967	20.8%	2,939	20.6%	1,762	12.4%	3	0.0%	5,332	83.6%	1,068	16.4%	6,400
May 2024	15,356	1,601	154	15,753	6,005	38.1%	1,084	6.9%	181	1.1%	3,369	21.4%	3,294	20.9%	1,810	11.5%	10	0.1%	6,005	84.7%	1,081	15.3%	7,086
June 2024	12,636	1,337	139	13,083	4,869	37.2%	894	6.8%	167	1.3%	3,123	23.9%	2,348	17.9%	1,679	12.8%	3	0.0%	4,869	84.5%	894	15.5%	5,763
July 2024	11,454	594	65	12,329	4,350	35.3%	918	7.4%	151	1.2%	2,930	23.8%	2,207	17.9%	1,769	14.3%	4	0.0%	4,350	82.6%	918	17.4%	5,268
August 2024	10,734	837	102	11,532	4,158	36.1%	872	7.6%	201	1.7%	2,635	22.8%	2,077	18.0%	1,583	13.7%	6	0.1%	4,158	82.7%	872	17.3%	5,030
September 2024	13,490	1,085	108	14,229	5,254	36.9%	985	6.9%	191	1.3%	3,137	22.0%	3,045	21.4%	1,610	11.3%	7	0.0%	5,254	84.2%	985	15.8%	6,239
October 2024	14,982	1,428	122	15,540	5,771	37.1%	1,090	7.0%	211	1.4%	3,409	21.9%	3,377	21.7%	1,678	10.8%	4	0.0%	5,771	84.1%	1,090	15.9%	6,861
November 2024	12,330	980	90	12,956	4,730	36.5%	921	7.1%	129	1.0%	3,134	24.2%	2,560	19.8%	1,481	11.4%	1	0.0%	4,730	83.7%	921	16.3%	5,651
December 2024	11,920	841	69	12,620	4,653	36.9%	920	7.3%	133	1.1%	2,827	22.4%	2,609	20.7%	1,474	11.7%	4	0.0%	4,653	83.5%	920	16.5%	5,573
January 2025	13,964	1,132	89	14,617	5,233	35.8%	1,069	7.3%	154	1.1%	3,198	21.9%	3,252	22.2%	1,707	11.7%	4	0.0%	5,233	83.0%	1,069	17.0%	6,302
<b>February 2025</b>	<b>12,709</b>	<b>1,197</b>	<b>125</b>	<b>13,164</b>	<b>4,735</b>	<b>36.0%</b>	<b>950</b>	<b>7.2%</b>	<b>152</b>	<b>1.2%</b>	<b>3,096</b>	<b>23.5%</b>	<b>2,786</b>	<b>21.2%</b>	<b>1,444</b>	<b>11.0%</b>	<b>1</b>	<b>0.0%</b>	<b>4,735</b>	<b>83.3%</b>	<b>952</b>	<b>16.7%</b>	<b>5,687</b>
<i>Averages</i>	13,174	1,121		13,786	5,057	36.7%	995	7.2%	166	1.2%	3,103	22.5%	2,815	20.4%	1,645	11.9%	5	0.0%	5,057	83.6%	995	16.4%	6,052
<b>Overall Totals</b>	<b>171,266</b>	<b>14,569</b>		<b>179,215</b>	<b>65,740</b>	<b>36.7%</b>	<b>12,933</b>	<b>7.2%</b>	<b>2,154</b>	<b>1.2%</b>	<b>40,345</b>	<b>22.5%</b>	<b>36,599</b>	<b>20.4%</b>	<b>21,385</b>	<b>11.9%</b>	<b>59</b>	<b>0.0%</b>	<b>65,738</b>	<b>83.6%</b>	<b>12,934</b>	<b>16.4%</b>	<b>78,672</b>

<sup>1</sup> Comes from three distinct sources: (1) the Automatic Call Distribution (ACD) phone system; which keeps a count of the number of calls and call routing; (2) Monthly NJSpirit Intakes; which record decision making on calls received by hotline screeners, and (3) NJSpirit  
<sup>2</sup> The number of Intakes, CPS Reports, and CWS Referrals are based on an extract from NJSpirit.  
 Data extracted by the Office of Research, Evaluation, and Reporting on **March 10, 2025** includes all Intakes, CPS Reports, and CWS Referrals received from **February 01, 2025 through February 28, 2025**.  
<sup>3</sup> The number calls received through the ACD System that were directed to a screener from any call-in phone number.  
<sup>4</sup> The number of calls received through the ACD System that are abandoned either while waiting in queue or while ringing.  
<sup>5</sup> The number of Intakes entered in NJSpirit from the number of calls received.  
<sup>6</sup> The number of Intakes recorded in NJSpirit, by type of Intake. There is not a one-to-one relationship between an ACD call and an Intake; multiple calls to State Central Registry (SCR) may result in a single Intake, or one call may result in multiple Intakes.  
<sup>7</sup> Intake: The process of documenting: a report of alleged abuse or neglect of a child (CPS); a request for services on behalf of a child, or a referral of a child for services (CWS); a call in which the caller provides additional or clarifying information about a current service case or active investigation (RI); informing a caller of, or referring a caller to, services available from other private or public sources (I&R); a call that requires no action by CP&P (NAR); or a response to a simple inquiry (IO).



### CP&P Annual Trends in CPS Reports and CWS Referrals





**Table 2: Assignments to CP&P Offices: CPS Reports and CWS Referrals<sup>1</sup>**

Intake Date <sup>3</sup>		CPS Reports <sup>2</sup>	CWS Referrals <sup>2</sup>	Total Assignments <sup>2</sup>
2018	Jan 2018	5,276	1,784	7,060
	<b>Feb 2018</b>	<b>4,933</b>	<b>1,644</b>	<b>6,577</b>
	Mar 2018	5,212	1,727	6,939
	Apr 2018	5,275	1,601	6,876
	May 2018	5,920	1,836	7,756
	Jun 2018	4,948	1,615	6,563
	Jul 2018	4,011	1,308	5,319
	Aug 2018	4,102	1,408	5,510
	Sep 2018	4,748	1,634	6,382
	Oct 2018	5,790	2,011	7,801
	Nov 2018	4,973	1,620	6,593
	Dec 2018	4,891	1,527	6,418
	<b>Total</b>	<b>60,079</b>	<b>19,715</b>	<b>79,794</b>
2019	Jan 2019	5,443	1,858	7,301
	<b>Feb 2019</b>	<b>4,811</b>	<b>1,628</b>	<b>6,439</b>
	Mar 2019	5,677	1,824	7,501
	Apr 2019	5,313	1,630	6,943
	May 2019	5,853	1,781	7,634
	Jun 2019	4,874	1,509	6,383
	Jul 2019	4,277	1,309	5,586
	Aug 2019	4,068	1,306	5,374
	Sep 2019	5,315	1,551	6,866
	Oct 2019	5,968	1,926	7,894
	Nov 2019	4,991	1,432	6,423
	Dec 2019	4,855	1,434	6,289
	<b>Total</b>	<b>61,445</b>	<b>19,188</b>	<b>80,633</b>
2020	Jan 2020	5,715	1,842	7,557
	<b>Feb 2020</b>	<b>5,380</b>	<b>1,624</b>	<b>7,004</b>
	Mar 2020	4,172	1,065	5,237
	Apr 2020	2,149	407	2,556
	May 2020	2,897	537	3,434
	Jun 2020	3,045	636	3,681
	Jul 2020	3,628	738	4,366
	Aug 2020	3,569	822	4,391
	Sep 2020	4,153	1,030	5,183
	Oct 2020	4,257	868	5,125
	Nov 2020	3,564	670	4,234
	Dec 2020	3,517	681	4,198
	<b>Total</b>	<b>46,046</b>	<b>10,920</b>	<b>56,966</b>

Data in this report is preliminary and may differ from any final report. This report is produced to ensure continuous quality improvement throughout DCF.



**Table 2: Assignments to CP&P Offices: CPS Reports and CWS Referrals<sup>1</sup>**

Intake Date <sup>3</sup>		CPS Reports <sup>2</sup>	CWS Referrals <sup>2</sup>	Total Assignments <sup>2</sup>
2021	Jan 2021	4,018	794	4,812
	<b>Feb 2021</b>	<b>3,767</b>	<b>655</b>	<b>4,422</b>
	Mar 2021	4,657	830	5,487
	Apr 2021	4,398	750	5,148
	May 2021	4,870	736	5,606
	Jun 2021	4,412	592	5,004
	Jul 2021	3,914	570	4,484
	Aug 2021	3,866	482	4,348
	Sep 2021	4,559	564	5,123
	Oct 2021	5,213	630	5,843
	Nov 2021	4,689	541	5,230
	Dec 2021	4,601	557	5,158
	<b>Total</b>	<b>52,964</b>	<b>7,701</b>	<b>60,665</b>
2022	Jan 2022	4,274	523	4,797
	<b>Feb 2022</b>	<b>4,867</b>	<b>635</b>	<b>5,502</b>
	Mar 2022	5,780	727	6,507
	Apr 2022	4,669	636	5,305
	May 2022	5,228	647	5,875
	Jun 2022	4,854	598	5,452
	Jul 2022	4,277	590	4,867
	Aug 2022	4,103	589	4,692
	Sep 2022	4,810	680	5,490
	Oct 2022	5,356	725	6,081
	Nov 2022	4,852	762	5,614
	Dec 2022	4,760	731	5,491
	<b>Total</b>	<b>57,830</b>	<b>7,843</b>	<b>65,673</b>
2023	Jan 2023	5,461	962	6,423
	<b>Feb 2023</b>	<b>5,141</b>	<b>891</b>	<b>6,032</b>
	Mar 2023	6,064	1,121	7,185
	Apr 2023	5,001	870	5,871
	May 2023	6,074	1,053	7,127
	Jun 2023	4,999	955	5,954
	Jul 2023	4,576	834	5,410
	Aug 2023	4,484	981	5,465
	Sep 2023	5,034	1,000	6,034
	Oct 2023	5,837	1,131	6,968
	Nov 2023	5,195	934	6,129
	Dec 2023	4,913	967	5,880
	<b>Total</b>	<b>62,779</b>	<b>11,699</b>	<b>74,478</b>

Data in this report is preliminary and may differ from any final report. This report is produced to ensure continuous quality improvement throughout DCF.

Intake Date <sup>3</sup>		CPS Reports <sup>2</sup>	CWS Referrals <sup>2</sup>	Total Assignments <sup>2</sup>
2024	Jan 2024	5,268	1,108	6,376
	<b>Feb 2024</b>	<b>5,259</b>	<b>1,082</b>	<b>6,341</b>
	Mar 2024	5,389	1,082	6,471
	Apr 2024	5,332	1,068	6,400
	May 2024	6,005	1,081	7,086
	Jun 2024	4,869	894	5,763
	Jul 2024	4,350	918	5,268
	Aug 2024	4,158	872	5,030
	Sep 2024	5,254	985	6,239
	Oct 2024	5,771	1,090	6,861
	Nov 2024	4,730	921	5,651
	Dec 2024	4,653	920	5,573
	<b>Total</b>	<b>61,038</b>	<b>12,021</b>	<b>73,059</b>
2025	Jan 2025	5,233	1,069	6,302
	<b>Feb 2025</b>	<b>4,735</b>	<b>952</b>	<b>5,687</b>
	<b>Total</b>	<b>9,968</b>	<b>2,021</b>	<b>11,989</b>
<b>Grand Total</b>		<b>412,149</b>	<b>91,108</b>	<b>503,257</b>

<sup>1</sup>Source of Data: NJ SPIRIT

<sup>2</sup>A CPS Report or a CWS Referral may include multiple children in a family, with one or more allegation or request for services. In these cases, each CPS Report or CWS Referral is counted once - the CPS Report or the CWS Referral is the unit of analysis rather than the child.

<sup>3</sup>Prior to January 2014, the number of CPS Reports and CWS Referrals was based on the type of assignment of the CPS Report or CWS Referral. Beginning in January 2014, the number of CPS Reports and CWS Referrals is based on the number of CPS Reports and CWS Referrals received.



**Table 3: Source of CPS Reports and CWS Referrals**

CPS Reports and CWS Referrals	Source	Feb 2024	Mar 2024	Apr 2024	May 2024	Jun 2024	Jul 2024	Aug 2024	Sep 2024	Oct 2024	Nov 2024	Dec 2024	Jan 2025	Feb 2025	13 Month Total		
	School Staff	1,837	1,881	1,605	1,914	892	200	100	1,453	2,033	1,405	1,378	1,823	1,640	29%	18,161	23%
	Healthcare Provider	847	896	911	893	828	814	839	794	865	864	806	806	714	13%	10,877	14%
	Law Enforcement	1,598	1,665	1,688	1,859	1,932	1,920	1,820	1,746	1,677	1,493	1,559	1,593	1,427	25%	21,977	28%
	Government Agency	282	249	314	323	248	306	321	286	302	243	229	270	237	4%	3,610	5%
	Parent	402	405	438	489	440	526	500	493	475	401	386	447	373	7%	5,775	7%
	Relative/Friend/Neighbor	308	293	323	337	364	322	355	323	352	257	265	286	276	5%	4,061	5%
	Anonymous	423	487	445	533	439	408	420	524	539	435	434	483	447	8%	6,017	8%
	CP&P	56	56	58	65	39	73	54	54	62	48	49	70	65	1%	749	1%
	Court/Legal	114	115	148	139	135	114	146	141	95	114	100	96	102	2%	1,559	2%
	Community Group/Individual	169	146	153	186	147	185	153	137	170	142	128	149	132	2%	1,997	3%
	Facility Staff (incl Correctional Facility)	47	45	59	47	35	76	48	46	43	52	41	46	41	1%	626	1%
	Child (Self)	24	24	30	33	33	40	40	38	18	26	24	37	33	1%	400	1%
	Other	212	182	198	236	203	244	207	185	199	161	160	176	176	3%	2,539	3%
	Daycare/Babysitter	22	27	30	32	28	40	27	19	31	10	14	20	24	0%	324	0%
<b>Total</b>	<b>6,341</b>	<b>6,471</b>	<b>6,400</b>	<b>7,086</b>	<b>5,763</b>	<b>5,268</b>	<b>5,030</b>	<b>6,239</b>	<b>6,861</b>	<b>5,651</b>	<b>5,573</b>	<b>6,302</b>	<b>5,687</b>		<b>78,672</b>		

Data in this report is preliminary and may differ from any final report. This report is produced to ensure continuous quality improvement throughout DCF.





**Table 4: Monthly Count of CPS Reports and CWS Referrals Assigned to Counties**

County	Feb 2024	Mar 2024	Apr 2024	May 2024	Jun 2024	Jul 2024	Aug 2024	Sep 2024	Oct 2024	Nov 2024	Dec 2024	Jan 2025	Feb 2025	Average Number of Assignments Last 13 Months	Numerical Difference
Atlantic	260	240	316	328	262	233	210	276	298	233	240	283	232	262	-51
Bergen	361	343	364	435	301	308	272	391	402	351	318	383	368	354	-15
Burlington	305	306	331	359	287	230	244	301	330	301	277	308	270	296	-38
Camden	491	451	496	534	467	422	441	516	521	466	459	483	442	476	-41
Cape May	60	62	73	71	83	88	71	67	77	78	62	68	50	70	-18
Cumberland	206	230	210	224	166	163	168	215	232	174	176	199	198	197	-1
Essex	658	686	633	719	621	540	529	585	707	577	603	655	587	623	-68
Gloucester	254	235	244	260	222	227	224	256	253	241	217	221	200	235	-21
Hudson	466	462	392	463	393	334	333	426	459	374	376	452	399	410	-53
Hunterdon	63	47	52	55	41	54	47	59	51	48	52	51	49	51	-2
Mercer	308	327	302	343	240	223	234	297	314	277	250	264	251	279	-13
Middlesex	466	503	483	479	432	358	320	442	502	398	425	486	431	440	-55
Monmouth	305	328	349	339	335	272	299	330	335	315	268	325	289	315	-36
Morris	233	259	228	242	182	224	183	232	224	210	191	237	195	218	-42
Ocean	378	382	375	410	370	323	322	357	423	355	336	368	336	364	-32
Passaic	381	387	393	474	336	327	296	378	455	317	386	412	366	378	-46
Salem	84	77	67	84	65	59	70	73	71	51	54	76	72	69	-4
Somerset	146	159	135	172	138	129	87	129	179	133	138	171	150	144	-21
Sussex	103	96	114	110	96	105	68	101	126	101	81	109	88	100	-21
Union	348	396	352	396	310	264	238	306	395	304	315	327	305	327	-22
Warren	102	105	98	139	95	100	103	139	104	75	80	109	83	102	-26
<b>County Subtotals</b>	<b>5,978</b>	<b>6,081</b>	<b>6,007</b>	<b>6,636</b>	<b>5,442</b>	<b>4,983</b>	<b>4,759</b>	<b>5,876</b>	<b>6,458</b>	<b>5,379</b>	<b>5,304</b>	<b>5,987</b>	<b>5,361</b>	<b>5,712</b>	<b>-626</b>
Central Region IAIU	68	84	67	66	58	51	27	66	70	56	48	48	65	60	17
Metro Region IAIU	56	82	70	85	59	34	26	40	61	30	31	42	41	51	-1
Northern Region IAIU	58	52	57	58	40	31	33	52	77	33	40	50	51	49	1
Western Region IAIU	0	0	0	0	0	58	65	82	38	51	57	85	74	39	-11
Southern Region IAIU	88	82	87	120	95	33	22	35	52	36	23	26	26	56	0
<b>IAIU Subtotals</b>	<b>270</b>	<b>300</b>	<b>281</b>	<b>329</b>	<b>252</b>	<b>207</b>	<b>173</b>	<b>275</b>	<b>298</b>	<b>206</b>	<b>199</b>	<b>251</b>	<b>257</b>	<b>254</b>	<b>6</b>
<sup>1</sup> Unable to Determine	85	83	108	110	68	75	97	87	101	62	69	62	66	83	4
Other Offices	8	7	4	11	1	3	1	1	4	4	1	2	3	4	1
<b>Grand Total</b>	<b>6,341</b>	<b>6,471</b>	<b>6,400</b>	<b>7,086</b>	<b>5,763</b>	<b>5,268</b>	<b>5,030</b>	<b>6,239</b>	<b>6,861</b>	<b>5,651</b>	<b>5,573</b>	<b>6,302</b>	<b>5,687</b>	<b>6,052</b>	<b>-615</b>

<sup>1</sup>CPS Reports or CWS Referrals not assigned to an office through the Assignment Designee, but were assigned to an office for an assessment or investigation.



**Table 5: Monthly Count of CPS Reports and CWS Referrals Assigned to CP&P Local Offices**

County	Local Office	Type of Referral	Feb 2024	Mar 2024	Apr 2024	May 2024	Jun 2024	Jul 2024	Aug 2024	Sep 2024	Oct 2024	Nov 2024	Dec 2024	Jan 2025	Feb 2025	Total
ATLANTIC	Atlantic East	CPS	121	107	138	176	116	119	105	118	139	113	117	136	105	1,610
		CWS	25	29	41	24	33	22	24	25	40	27	19	37	24	370
		<b>Total</b>	<b>146</b>	<b>136</b>	<b>179</b>	<b>200</b>	<b>149</b>	<b>141</b>	<b>129</b>	<b>143</b>	<b>179</b>	<b>140</b>	<b>136</b>	<b>173</b>	<b>129</b>	<b>1,980</b>
	Atlantic West	CPS	94	89	116	103	90	71	66	109	100	74	90	92	83	1,177
		CWS	20	15	21	25	23	21	15	24	19	19	14	18	20	254
		<b>Total</b>	<b>114</b>	<b>104</b>	<b>137</b>	<b>128</b>	<b>113</b>	<b>92</b>	<b>81</b>	<b>133</b>	<b>119</b>	<b>93</b>	<b>104</b>	<b>110</b>	<b>103</b>	<b>1,431</b>
	County Totals	CPS	215	196	254	279	206	190	171	227	239	187	207	228	188	2,787
		CWS	45	44	62	49	56	43	39	49	59	46	33	55	44	624
		<b>Total</b>	<b>260</b>	<b>240</b>	<b>316</b>	<b>328</b>	<b>262</b>	<b>233</b>	<b>210</b>	<b>276</b>	<b>298</b>	<b>233</b>	<b>240</b>	<b>283</b>	<b>232</b>	<b>3,411</b>
	BERGEN	Bergen Central	CPS	132	126	109	172	112	108	85	165	137	145	114	146	142
CWS			28	31	30	28	27	28	19	30	28	22	25	27	32	355
<b>Total</b>			<b>160</b>	<b>157</b>	<b>139</b>	<b>200</b>	<b>139</b>	<b>136</b>	<b>104</b>	<b>195</b>	<b>165</b>	<b>167</b>	<b>139</b>	<b>173</b>	<b>174</b>	<b>2,048</b>
Bergen South		CPS	161	156	186	203	134	153	141	158	196	148	158	178	163	2,135
		CWS	40	30	39	32	28	19	27	38	41	36	21	32	31	414
		<b>Total</b>	<b>201</b>	<b>186</b>	<b>225</b>	<b>235</b>	<b>162</b>	<b>172</b>	<b>168</b>	<b>196</b>	<b>237</b>	<b>184</b>	<b>179</b>	<b>210</b>	<b>194</b>	<b>2,549</b>
County Totals		CPS	293	282	295	375	246	261	226	323	333	293	272	324	305	3,828
		CWS	68	61	69	60	55	47	46	68	69	58	46	59	63	769
		<b>Total</b>	<b>361</b>	<b>343</b>	<b>364</b>	<b>435</b>	<b>301</b>	<b>308</b>	<b>272</b>	<b>391</b>	<b>402</b>	<b>351</b>	<b>318</b>	<b>383</b>	<b>368</b>	<b>4,597</b>
BURLINGTON		Burlington East	CPS	118	130	129	147	108	96	90	127	132	129	119	107	115
	CWS		28	30	29	37	29	18	27	24	30	34	30	38	24	378
	<b>Total</b>		<b>146</b>	<b>160</b>	<b>158</b>	<b>184</b>	<b>137</b>	<b>114</b>	<b>117</b>	<b>151</b>	<b>162</b>	<b>163</b>	<b>149</b>	<b>145</b>	<b>139</b>	<b>1,925</b>
	Burlington West	CPS	127	114	147	148	125	98	94	118	141	121	104	127	106	1,570
		CWS	32	32	26	27	25	18	33	32	27	17	24	36	25	354
		<b>Total</b>	<b>159</b>	<b>146</b>	<b>173</b>	<b>175</b>	<b>150</b>	<b>116</b>	<b>127</b>	<b>150</b>	<b>168</b>	<b>138</b>	<b>128</b>	<b>163</b>	<b>131</b>	<b>1,924</b>
	County Totals	CPS	245	244	276	295	233	194	184	245	273	250	223	234	221	3,117
		CWS	60	62	55	64	54	36	60	56	57	51	54	74	49	732
		<b>Total</b>	<b>305</b>	<b>306</b>	<b>331</b>	<b>359</b>	<b>287</b>	<b>230</b>	<b>244</b>	<b>301</b>	<b>330</b>	<b>301</b>	<b>277</b>	<b>308</b>	<b>270</b>	<b>3,849</b>
	CAMDEN	Camden Central	CPS	106	101	98	117	92	92	96	112	115	90	95	97	96
CWS			28	22	26	18	20	25	36	23	35	24	36	28	19	340
<b>Total</b>			<b>134</b>	<b>123</b>	<b>124</b>	<b>135</b>	<b>112</b>	<b>117</b>	<b>132</b>	<b>135</b>	<b>150</b>	<b>114</b>	<b>131</b>	<b>125</b>	<b>115</b>	<b>1,647</b>
Camden East		CPS	96	95	111	99	109	81	86	117	97	97	99	98	101	1,286
		CWS	31	16	23	29	13	22	15	31	28	22	13	23	18	284
		<b>Total</b>	<b>127</b>	<b>111</b>	<b>134</b>	<b>128</b>	<b>122</b>	<b>103</b>	<b>101</b>	<b>148</b>	<b>125</b>	<b>119</b>	<b>112</b>	<b>121</b>	<b>119</b>	<b>1,570</b>
Camden North		CPS	109	96	96	116	74	93	95	92	110	103	92	90	85	1,251
		CWS	23	22	28	15	19	16	18	26	28	26	20	26	21	288
		<b>Total</b>	<b>132</b>	<b>118</b>	<b>124</b>	<b>131</b>	<b>93</b>	<b>109</b>	<b>113</b>	<b>118</b>	<b>138</b>	<b>129</b>	<b>112</b>	<b>116</b>	<b>106</b>	<b>1,539</b>
Camden South		CPS	85	80	90	108	118	74	76	97	96	82	89	94	85	1,174
		CWS	13	19	24	32	22	19	19	18	12	22	15	27	17	259
		<b>Total</b>	<b>98</b>	<b>99</b>	<b>114</b>	<b>140</b>	<b>140</b>	<b>93</b>	<b>95</b>	<b>115</b>	<b>108</b>	<b>104</b>	<b>104</b>	<b>121</b>	<b>102</b>	<b>1,433</b>
County Totals		CPS	396	372	395	440	393	340	353	418	418	372	375	379	367	5,018
		CWS	95	79	101	94	74	82	88	98	103	94	84	104	75	1,171
		<b>Total</b>	<b>491</b>	<b>451</b>	<b>496</b>	<b>534</b>	<b>467</b>	<b>422</b>	<b>441</b>	<b>516</b>	<b>521</b>	<b>466</b>	<b>459</b>	<b>483</b>	<b>442</b>	<b>6,189</b>
CAPE MAY		Cape May	CPS	45	51	64	56	72	74	55	60	69	59	56	56	46
	CWS		15	11	9	15	11	14	16	7	8	19	6	12	4	147
	<b>Total</b>		<b>60</b>	<b>62</b>	<b>73</b>	<b>71</b>	<b>83</b>	<b>88</b>	<b>71</b>	<b>67</b>	<b>77</b>	<b>78</b>	<b>62</b>	<b>68</b>	<b>50</b>	<b>910</b>
	County Totals	CPS	45	51	64	56	72	74	55	60	69	59	56	56	46	763
		<b>Total</b>	<b>60</b>	<b>62</b>	<b>73</b>	<b>71</b>	<b>83</b>	<b>88</b>	<b>71</b>	<b>67</b>	<b>77</b>	<b>78</b>	<b>62</b>	<b>68</b>	<b>50</b>	<b>910</b>
CUMBERLAND	Cumberland East	CPS	68	72	79	95	70	56	55	60	81	59	59	68	68	890
		CWS	18	18	10	19	10	14	17	9	18	13	11	13	13	183
		<b>Total</b>	<b>86</b>	<b>90</b>	<b>89</b>	<b>114</b>	<b>80</b>	<b>70</b>	<b>72</b>	<b>69</b>	<b>99</b>	<b>72</b>	<b>70</b>	<b>81</b>	<b>81</b>	<b>1,073</b>
	Cumberland West	CPS	101	108	109	89	69	75	78	124	113	82	85	89	98	1,220
		CWS	19	32	12	21	17	18	18	22	20	20	21	29	19	268
		<b>Total</b>	<b>120</b>	<b>140</b>	<b>121</b>	<b>110</b>	<b>86</b>	<b>93</b>	<b>96</b>	<b>146</b>	<b>133</b>	<b>102</b>	<b>106</b>	<b>118</b>	<b>117</b>	<b>1,488</b>
	County Totals	CPS	169	180	188	184	139	131	133	184	194	141	144	157	166	2,110
		CWS	37	50	22	40	27	32	35	31	38	33	32	42	32	451
		<b>Total</b>	<b>206</b>	<b>230</b>	<b>210</b>	<b>224</b>	<b>166</b>	<b>163</b>	<b>168</b>	<b>215</b>	<b>232</b>	<b>174</b>	<b>176</b>	<b>199</b>	<b>198</b>	<b>2,561</b>

Data in this report is preliminary and may differ from any final report. This report is produced to ensure continuous quality improvement throughout DCF.



**Table 5: Monthly Count of CPS Reports and CWS Referrals Assigned to CP&P Local Offices**

County	Local Office	Type of Referral	Feb 2024	Mar 2024	Apr 2024	May 2024	Jun 2024	Jul 2024	Aug 2024	Sep 2024	Oct 2024	Nov 2024	Dec 2024	Jan 2025	Feb 2025	Total
ESSEX	Essex Central	CPS	71	72	64	69	76	60	56	57	84	60	59	81	59	868
		CWS	23	26	14	19	19	23	16	12	14	15	16	19	18	234
		<b>Total</b>	<b>94</b>	<b>98</b>	<b>78</b>	<b>88</b>	<b>95</b>	<b>83</b>	<b>72</b>	<b>69</b>	<b>98</b>	<b>75</b>	<b>75</b>	<b>100</b>	<b>77</b>	<b>1,102</b>
	Essex North	CPS	95	99	115	126	99	78	70	94	102	107	91	113	99	1,288
		CWS	25	28	16	21	17	22	27	20	21	16	30	23	15	281
		<b>Total</b>	<b>120</b>	<b>127</b>	<b>131</b>	<b>147</b>	<b>116</b>	<b>100</b>	<b>97</b>	<b>114</b>	<b>123</b>	<b>123</b>	<b>121</b>	<b>136</b>	<b>114</b>	<b>1,569</b>
	Essex South	CPS	94	98	91	110	86	87	80	68	109	78	78	104	84	1,167
		CWS	20	16	21	18	22	24	18	23	34	16	23	22	9	266
		<b>Total</b>	<b>114</b>	<b>114</b>	<b>112</b>	<b>128</b>	<b>108</b>	<b>111</b>	<b>98</b>	<b>91</b>	<b>143</b>	<b>94</b>	<b>101</b>	<b>126</b>	<b>93</b>	<b>1,433</b>
	Newark Center City	CPS	70	82	87	81	80	55	76	79	97	83	80	72	74	1,016
		CWS	23	21	18	26	22	21	13	26	17	20	19	15	23	264
		<b>Total</b>	<b>93</b>	<b>103</b>	<b>105</b>	<b>107</b>	<b>102</b>	<b>76</b>	<b>89</b>	<b>105</b>	<b>114</b>	<b>103</b>	<b>99</b>	<b>87</b>	<b>97</b>	<b>1,280</b>
	Newark Northeast	CPS	97	96	82	106	78	76	67	83	103	85	76	99	96	1,144
		CWS	26	36	27	21	22	22	19	20	29	19	27	25	16	309
		<b>Total</b>	<b>123</b>	<b>132</b>	<b>109</b>	<b>127</b>	<b>100</b>	<b>98</b>	<b>86</b>	<b>103</b>	<b>132</b>	<b>104</b>	<b>103</b>	<b>124</b>	<b>112</b>	<b>1,453</b>
	Newark South	CPS	92	99	72	104	81	59	63	85	80	64	83	71	72	1,025
		CWS	22	13	26	18	19	13	24	18	17	14	21	11	22	238
		<b>Total</b>	<b>114</b>	<b>112</b>	<b>98</b>	<b>122</b>	<b>100</b>	<b>72</b>	<b>87</b>	<b>103</b>	<b>97</b>	<b>78</b>	<b>104</b>	<b>82</b>	<b>94</b>	<b>1,263</b>
	County Totals	CPS	519	546	511	596	500	415	412	466	575	477	467	540	484	6,508
		CWS	139	140	122	123	121	125	117	119	132	100	136	115	103	1,592
<b>Total</b>		<b>658</b>	<b>686</b>	<b>633</b>	<b>719</b>	<b>621</b>	<b>540</b>	<b>529</b>	<b>585</b>	<b>707</b>	<b>577</b>	<b>603</b>	<b>655</b>	<b>587</b>	<b>8,100</b>	
GLOUCESTER	Gloucester East	CPS	92	80	90	98	82	91	83	91	92	85	79	81	85	1,129
		CWS	26	22	18	12	16	20	19	19	18	12	15	14	18	229
		<b>Total</b>	<b>118</b>	<b>102</b>	<b>108</b>	<b>110</b>	<b>98</b>	<b>111</b>	<b>102</b>	<b>110</b>	<b>110</b>	<b>97</b>	<b>94</b>	<b>95</b>	<b>103</b>	<b>1,358</b>
	Gloucester West	CPS	112	110	112	121	105	92	101	123	120	125	104	107	84	1,416
		CWS	24	23	24	29	19	24	21	23	23	19	19	19	13	280
		<b>Total</b>	<b>136</b>	<b>133</b>	<b>136</b>	<b>150</b>	<b>124</b>	<b>116</b>	<b>122</b>	<b>146</b>	<b>143</b>	<b>144</b>	<b>123</b>	<b>126</b>	<b>97</b>	<b>1,696</b>
	County Totals	CPS	204	190	202	219	187	183	184	214	212	210	183	188	169	2,545
		CWS	50	45	42	41	35	44	40	42	41	31	34	33	31	509
		<b>Total</b>	<b>254</b>	<b>235</b>	<b>244</b>	<b>260</b>	<b>222</b>	<b>227</b>	<b>224</b>	<b>256</b>	<b>253</b>	<b>241</b>	<b>217</b>	<b>221</b>	<b>200</b>	<b>3,054</b>
	HUDSON	Hudson Central	CPS	104	109	75	99	96	76	79	99	107	76	95	89	101
CWS			24	21	16	18	24	25	27	15	17	17	20	22	21	267
<b>Total</b>			<b>128</b>	<b>130</b>	<b>91</b>	<b>117</b>	<b>120</b>	<b>101</b>	<b>106</b>	<b>114</b>	<b>124</b>	<b>93</b>	<b>115</b>	<b>111</b>	<b>122</b>	<b>1,472</b>
Hudson North		CPS	111	94	93	97	96	61	65	96	101	88	85	102	65	1,154
		CWS	13	24	22	21	15	29	16	16	24	11	12	20	16	239
		<b>Total</b>	<b>124</b>	<b>118</b>	<b>115</b>	<b>118</b>	<b>111</b>	<b>90</b>	<b>81</b>	<b>112</b>	<b>125</b>	<b>99</b>	<b>97</b>	<b>122</b>	<b>81</b>	<b>1,393</b>
Hudson South		CPS	90	87	83	97	63	52	61	85	67	71	80	105	80	1,021
		CWS	15	18	17	25	11	14	13	17	24	19	14	18	23	228
		<b>Total</b>	<b>105</b>	<b>105</b>	<b>100</b>	<b>122</b>	<b>74</b>	<b>66</b>	<b>74</b>	<b>102</b>	<b>91</b>	<b>90</b>	<b>94</b>	<b>123</b>	<b>103</b>	<b>1,249</b>
Hudson West		CPS	95	85	73	88	75	65	56	80	92	75	63	79	83	1,009
		CWS	14	24	13	18	13	12	16	18	27	17	7	17	10	206
		<b>Total</b>	<b>109</b>	<b>109</b>	<b>86</b>	<b>106</b>	<b>88</b>	<b>77</b>	<b>72</b>	<b>98</b>	<b>119</b>	<b>92</b>	<b>70</b>	<b>96</b>	<b>93</b>	<b>1,215</b>
County Totals		CPS	400	375	324	381	330	254	261	360	367	310	323	375	329	4,389
		CWS	66	87	68	82	63	80	72	66	92	64	53	77	70	940
	<b>Total</b>	<b>466</b>	<b>462</b>	<b>392</b>	<b>463</b>	<b>393</b>	<b>334</b>	<b>333</b>	<b>426</b>	<b>459</b>	<b>374</b>	<b>376</b>	<b>452</b>	<b>399</b>	<b>5,329</b>	
HUNTERDON	Hunterdon	CPS	51	42	45	45	35	41	43	52	43	41	37	44	38	557
		CWS	12	5	7	10	6	13	4	7	8	7	15	7	11	112
		<b>Total</b>	<b>63</b>	<b>47</b>	<b>52</b>	<b>55</b>	<b>41</b>	<b>54</b>	<b>47</b>	<b>59</b>	<b>51</b>	<b>48</b>	<b>52</b>	<b>51</b>	<b>49</b>	<b>669</b>
	County Totals	CPS	51	42	45	45	35	41	43	52	43	41	37	44	38	557
		<b>Total</b>	<b>63</b>	<b>47</b>	<b>52</b>	<b>55</b>	<b>41</b>	<b>54</b>	<b>47</b>	<b>59</b>	<b>51</b>	<b>48</b>	<b>52</b>	<b>51</b>	<b>49</b>	<b>669</b>
MERCER	Mercer North	CPS	114	147	129	151	103	102	108	125	147	115	127	120	118	1,606
		CWS	30	33	24	28	18	26	15	31	19	24	21	27	20	316
		<b>Total</b>	<b>144</b>	<b>180</b>	<b>153</b>	<b>179</b>	<b>121</b>	<b>128</b>	<b>123</b>	<b>156</b>	<b>166</b>	<b>139</b>	<b>148</b>	<b>147</b>	<b>138</b>	<b>1,922</b>
	Mercer South	CPS	133	132	123	142	97	84	98	119	123	117	85	97	100	1,450
		CWS	31	15	26	22	22	11	13	22	25	21	17	20	13	258
		<b>Total</b>	<b>164</b>	<b>147</b>	<b>149</b>	<b>164</b>	<b>119</b>	<b>95</b>	<b>111</b>	<b>141</b>	<b>148</b>	<b>138</b>	<b>102</b>	<b>117</b>	<b>113</b>	<b>1,708</b>
	County Totals	CPS	247	279	252	293	200	186	206	244	270	232	212	217	218	3,056
		<b>Total</b>	<b>308</b>	<b>327</b>	<b>302</b>	<b>343</b>	<b>240</b>	<b>223</b>	<b>234</b>	<b>297</b>	<b>314</b>	<b>277</b>	<b>250</b>	<b>264</b>	<b>251</b>	<b>3,630</b>

Data in this report is preliminary and may differ from any final report. This report is produced to ensure continuous quality improvement throughout DCF.



**Table 5: Monthly Count of CPS Reports and CWS Referrals Assigned to CP&P Local Offices**

County	Local Office	Type of Referral	Feb 2024	Mar 2024	Apr 2024	May 2024	Jun 2024	Jul 2024	Aug 2024	Sep 2024	Oct 2024	Nov 2024	Dec 2024	Jan 2025	Feb 2025	Total
MIDDLESEX	Middlesex Central	CPS	123	122	131	129	104	84	72	115	125	107	85	133	107	1,437
		CWS	19	20	16	8	19	16	18	24	21	13	15	27	22	238
		<b>Total</b>	<b>142</b>	<b>142</b>	<b>147</b>	<b>137</b>	<b>123</b>	<b>100</b>	<b>90</b>	<b>139</b>	<b>146</b>	<b>120</b>	<b>100</b>	<b>160</b>	<b>129</b>	<b>1,675</b>
	Middlesex Coastal	CPS	148	142	139	136	144	100	101	147	161	117	126	139	130	1,730
		CWS	21	33	26	28	12	19	18	23	22	22	29	23	26	302
		<b>Total</b>	<b>169</b>	<b>175</b>	<b>165</b>	<b>164</b>	<b>156</b>	<b>119</b>	<b>119</b>	<b>170</b>	<b>183</b>	<b>139</b>	<b>155</b>	<b>162</b>	<b>156</b>	<b>2,032</b>
	Middlesex West	CPS	130	159	132	148	122	119	91	115	154	119	139	134	119	1,681
		CWS	25	27	39	30	31	20	20	18	19	20	31	30	27	337
		<b>Total</b>	<b>155</b>	<b>186</b>	<b>171</b>	<b>178</b>	<b>153</b>	<b>139</b>	<b>111</b>	<b>133</b>	<b>173</b>	<b>139</b>	<b>170</b>	<b>164</b>	<b>146</b>	<b>2,018</b>
	County Totals	CPS	401	423	402	413	370	303	264	377	440	343	350	406	356	4,848
		CWS	65	80	81	66	62	55	56	65	62	55	75	80	75	877
		<b>Total</b>	<b>466</b>	<b>503</b>	<b>483</b>	<b>479</b>	<b>432</b>	<b>358</b>	<b>320</b>	<b>442</b>	<b>502</b>	<b>398</b>	<b>425</b>	<b>486</b>	<b>431</b>	<b>5,725</b>
MONMOUTH	Monmouth North	CPS	153	171	171	156	177	135	140	168	171	143	126	160	138	2,009
		CWS	28	18	28	28	17	18	26	25	34	30	27	19	32	330
		<b>Total</b>	<b>181</b>	<b>189</b>	<b>199</b>	<b>184</b>	<b>194</b>	<b>153</b>	<b>166</b>	<b>193</b>	<b>205</b>	<b>173</b>	<b>153</b>	<b>179</b>	<b>170</b>	<b>2,339</b>
	Monmouth South	CPS	102	124	124	132	121	96	111	109	115	116	101	121	101	1,473
		CWS	22	15	26	23	20	23	22	28	15	26	14	25	18	277
		<b>Total</b>	<b>124</b>	<b>139</b>	<b>150</b>	<b>155</b>	<b>141</b>	<b>119</b>	<b>133</b>	<b>137</b>	<b>130</b>	<b>142</b>	<b>115</b>	<b>146</b>	<b>119</b>	<b>1,750</b>
	County Totals	CPS	255	295	295	288	298	231	251	277	286	259	227	281	239	3,482
		CWS	50	33	54	51	37	41	48	53	49	56	41	44	50	607
		<b>Total</b>	<b>305</b>	<b>328</b>	<b>349</b>	<b>339</b>	<b>335</b>	<b>272</b>	<b>299</b>	<b>330</b>	<b>335</b>	<b>315</b>	<b>268</b>	<b>325</b>	<b>289</b>	<b>4,089</b>
	MORRIS	Morris East	CPS	92	102	85	95	71	98	74	89	94	91	69	100	69
CWS			14	34	22	24	18	17	10	10	13	18	18	17	9	224
<b>Total</b>			<b>106</b>	<b>136</b>	<b>107</b>	<b>119</b>	<b>89</b>	<b>115</b>	<b>84</b>	<b>99</b>	<b>107</b>	<b>109</b>	<b>87</b>	<b>117</b>	<b>78</b>	<b>1,353</b>
Morris West		CPS	103	98	98	105	77	92	83	119	100	92	78	103	99	1,247
		CWS	24	25	23	18	16	17	16	14	17	9	26	17	18	240
		<b>Total</b>	<b>127</b>	<b>123</b>	<b>121</b>	<b>123</b>	<b>93</b>	<b>109</b>	<b>99</b>	<b>133</b>	<b>117</b>	<b>101</b>	<b>104</b>	<b>120</b>	<b>117</b>	<b>1,487</b>
County Totals		CPS	195	200	183	200	148	190	157	208	194	183	147	203	168	2,376
		CWS	38	59	45	42	34	34	26	24	30	27	44	34	27	464
		<b>Total</b>	<b>233</b>	<b>259</b>	<b>228</b>	<b>242</b>	<b>182</b>	<b>224</b>	<b>183</b>	<b>232</b>	<b>224</b>	<b>210</b>	<b>191</b>	<b>237</b>	<b>195</b>	<b>2,840</b>
OCEAN		Ocean North	CPS	169	171	192	182	171	144	136	165	192	152	171	161	152
	CWS		25	34	33	33	28	24	23	33	46	31	29	20	26	385
	<b>Total</b>		<b>194</b>	<b>205</b>	<b>225</b>	<b>215</b>	<b>199</b>	<b>168</b>	<b>159</b>	<b>198</b>	<b>238</b>	<b>183</b>	<b>200</b>	<b>181</b>	<b>178</b>	<b>2,543</b>
	Ocean South	CPS	154	152	123	161	148	122	141	133	149	144	127	161	124	1,839
		CWS	30	25	27	34	23	33	22	26	36	28	9	26	34	353
		<b>Total</b>	<b>184</b>	<b>177</b>	<b>150</b>	<b>195</b>	<b>171</b>	<b>155</b>	<b>163</b>	<b>159</b>	<b>185</b>	<b>172</b>	<b>136</b>	<b>187</b>	<b>158</b>	<b>2,192</b>
	County Totals	CPS	323	323	315	343	319	266	277	298	341	296	298	322	276	3,997
		CWS	55	59	60	67	51	57	45	59	82	59	38	46	60	738
		<b>Total</b>	<b>378</b>	<b>382</b>	<b>375</b>	<b>410</b>	<b>370</b>	<b>323</b>	<b>322</b>	<b>357</b>	<b>423</b>	<b>355</b>	<b>336</b>	<b>368</b>	<b>336</b>	<b>4,735</b>
	PASSAIC	Passaic Central	CPS	141	152	150	195	150	136	110	156	189	109	156	151	147
CWS			30	36	44	38	19	38	29	22	31	25	26	42	37	417
<b>Total</b>			<b>171</b>	<b>188</b>	<b>194</b>	<b>233</b>	<b>169</b>	<b>174</b>	<b>139</b>	<b>178</b>	<b>220</b>	<b>134</b>	<b>182</b>	<b>193</b>	<b>184</b>	<b>2,359</b>
Passaic North		CPS	164	163	159	201	137	129	139	167	198	155	178	174	148	2,112
		CWS	46	36	40	40	30	24	18	33	37	28	26	45	34	437
		<b>Total</b>	<b>210</b>	<b>199</b>	<b>199</b>	<b>241</b>	<b>167</b>	<b>153</b>	<b>157</b>	<b>200</b>	<b>235</b>	<b>183</b>	<b>204</b>	<b>219</b>	<b>182</b>	<b>2,549</b>
County Totals		CPS	305	315	309	396	287	265	249	323	387	264	334	325	295	4,054
		CWS	76	72	84	78	49	62	47	55	68	53	52	87	71	854
		<b>Total</b>	<b>381</b>	<b>387</b>	<b>393</b>	<b>474</b>	<b>336</b>	<b>327</b>	<b>296</b>	<b>378</b>	<b>455</b>	<b>317</b>	<b>386</b>	<b>412</b>	<b>366</b>	<b>4,908</b>
SALEM		Salem	CPS	68	58	57	70	53	53	56	62	52	41	45	60	63
	CWS		16	19	10	14	12	6	14	11	19	10	9	16	9	165
	<b>Total</b>		<b>84</b>	<b>77</b>	<b>67</b>	<b>84</b>	<b>65</b>	<b>59</b>	<b>70</b>	<b>73</b>	<b>71</b>	<b>51</b>	<b>54</b>	<b>76</b>	<b>72</b>	<b>903</b>
	County Totals	CPS	68	58	57	70	53	53	56	62	52	41	45	60	63	738
		CWS	16	19	10	14	12	6	14	11	19	10	9	16	9	165
		<b>Total</b>	<b>84</b>	<b>77</b>	<b>67</b>	<b>84</b>	<b>65</b>	<b>59</b>	<b>70</b>	<b>73</b>	<b>71</b>	<b>51</b>	<b>54</b>	<b>76</b>	<b>72</b>	<b>903</b>
SOMERSET	Somerset	CPS	128	134	111	152	123	108	73	111	160	118	116	138	123	1,595
		CWS	18	25	24	20	15	21	14	18	19	15	22	33	27	271
		<b>Total</b>	<b>146</b>	<b>159</b>	<b>135</b>	<b>172</b>	<b>138</b>	<b>129</b>	<b>87</b>	<b>129</b>	<b>179</b>	<b>133</b>	<b>138</b>	<b>171</b>	<b>150</b>	<b>1,866</b>
	County Totals	CPS	128	134	111	152	123	108	73	111	160	118	116	138	123	1,595
		<b>Total</b>	<b>146</b>	<b>159</b>	<b>135</b>	<b>172</b>	<b>138</b>	<b>129</b>	<b>87</b>	<b>129</b>	<b>179</b>	<b>133</b>	<b>138</b>	<b>171</b>	<b>150</b>	<b>1,866</b>

Data in this report is preliminary and may differ from any final report. This report is produced to ensure continuous quality improvement throughout DCF.



**Table 5: Monthly Count of CPS Reports and CWS Referrals Assigned to CP&P Local Offices**

County	Local Office	Type of Referral	Feb 2024	Mar 2024	Apr 2024	May 2024	Jun 2024	Jul 2024	Aug 2024	Sep 2024	Oct 2024	Nov 2024	Dec 2024	Jan 2025	Feb 2025	Total	
SUSSEX	Sussex	CPS	81	82	95	92	81	86	54	87	108	90	64	95	74	1,089	
		CWS	22	14	19	18	15	19	14	14	18	11	17	14	14	209	
		<b>Total</b>	<b>103</b>	<b>96</b>	<b>114</b>	<b>110</b>	<b>96</b>	<b>105</b>	<b>68</b>	<b>101</b>	<b>126</b>	<b>101</b>	<b>81</b>	<b>109</b>	<b>88</b>	<b>1,298</b>	
	County Totals	CPS	81	82	95	92	81	86	54	87	108	90	64	95	74	1,089	
		CWS	22	14	19	18	15	19	14	14	18	11	17	14	14	209	
		<b>Total</b>	<b>103</b>	<b>96</b>	<b>114</b>	<b>110</b>	<b>96</b>	<b>105</b>	<b>68</b>	<b>101</b>	<b>126</b>	<b>101</b>	<b>81</b>	<b>109</b>	<b>88</b>	<b>1,298</b>	
UNION	Union Central	CPS	87	107	93	91	94	62	60	78	109	68	84	81	69	1,083	
		CWS	21	17	7	24	13	12	13	19	17	17	16	19	19	214	
		<b>Total</b>	<b>108</b>	<b>124</b>	<b>100</b>	<b>115</b>	<b>107</b>	<b>74</b>	<b>73</b>	<b>97</b>	<b>126</b>	<b>85</b>	<b>100</b>	<b>100</b>	<b>88</b>	<b>1,297</b>	
	Union East	CPS	93	107	85	102	69	71	64	70	115	92	87	106	64	1,125	
		CWS	28	20	20	26	20	11	4	17	18	17	16	12	28	237	
		<b>Total</b>	<b>121</b>	<b>127</b>	<b>105</b>	<b>128</b>	<b>89</b>	<b>82</b>	<b>68</b>	<b>87</b>	<b>133</b>	<b>109</b>	<b>103</b>	<b>118</b>	<b>92</b>	<b>1,362</b>	
	Union West	CPS	100	127	128	133	99	97	85	100	108	94	92	93	109	1,365	
		CWS	19	18	19	20	15	11	12	22	28	16	20	16	16	232	
		<b>Total</b>	<b>119</b>	<b>145</b>	<b>147</b>	<b>153</b>	<b>114</b>	<b>108</b>	<b>97</b>	<b>122</b>	<b>136</b>	<b>110</b>	<b>112</b>	<b>109</b>	<b>125</b>	<b>1,597</b>	
	County Totals	CPS	280	341	306	326	262	230	209	248	332	254	263	280	242	3,573	
		CWS	68	55	46	70	48	34	29	58	63	50	52	47	63	683	
		<b>Total</b>	<b>348</b>	<b>396</b>	<b>352</b>	<b>396</b>	<b>310</b>	<b>264</b>	<b>238</b>	<b>306</b>	<b>395</b>	<b>304</b>	<b>315</b>	<b>327</b>	<b>305</b>	<b>4,256</b>	
	WARREN	Warren	CPS	85	85	78	126	82	83	81	118	89	58	69	86	68	1,108
			CWS	17	20	20	13	13	17	22	21	15	17	11	23	15	224
			<b>Total</b>	<b>102</b>	<b>105</b>	<b>98</b>	<b>139</b>	<b>95</b>	<b>100</b>	<b>103</b>	<b>139</b>	<b>104</b>	<b>75</b>	<b>80</b>	<b>109</b>	<b>83</b>	<b>1,332</b>
County Totals		CPS	85	85	78	126	82	83	81	118	89	58	69	86	68	1,108	
		CWS	17	20	20	13	13	17	22	21	15	17	11	23	15	224	
		<b>Total</b>	<b>102</b>	<b>105</b>	<b>98</b>	<b>139</b>	<b>95</b>	<b>100</b>	<b>103</b>	<b>139</b>	<b>104</b>	<b>75</b>	<b>80</b>	<b>109</b>	<b>83</b>	<b>1,332</b>	
County CPS Referral Total		CPS	4,905	5,013	4,957	5,569	4,564	4,084	3,899	4,902	5,382	4,478	4,412	4,938	4,435	61,538	
County CWS Referral Total		CWS	1,073	1,068	1,050	1,067	878	899	860	974	1,076	901	892	1,049	926	12,713	
County Referral Total		Total	5,978	6,081	6,007	6,636	5,442	4,983	4,759	5,876	6,458	5,379	5,304	5,987	5,361	74,251	
Central Region IAIU	CPS	68	84	67	66	58	51	27	66	70	55	48	48	65	773		
	CWS	0	0	0	0	0	0	0	0	0	1	0	0	0	1		
	<b>Total</b>	<b>68</b>	<b>84</b>	<b>67</b>	<b>66</b>	<b>58</b>	<b>51</b>	<b>27</b>	<b>66</b>	<b>70</b>	<b>56</b>	<b>48</b>	<b>48</b>	<b>65</b>	<b>774</b>		
Metro Region IAIU	CPS	56	82	70	85	59	34	25	40	61	30	31	42	41	656		
	CWS	0	0	0	0	0	0	1	0	0	0	0	0	0	1		
	<b>Total</b>	<b>56</b>	<b>82</b>	<b>70</b>	<b>85</b>	<b>59</b>	<b>34</b>	<b>26</b>	<b>40</b>	<b>61</b>	<b>30</b>	<b>31</b>	<b>42</b>	<b>41</b>	<b>657</b>		
Northern Region IAIU	CPS	58	52	57	58	40	31	33	52	77	33	40	50	51	632		
	CWS	0	0	0	0	0	0	0	0	0	0	0	0	0	0		
	<b>Total</b>	<b>58</b>	<b>52</b>	<b>57</b>	<b>58</b>	<b>40</b>	<b>31</b>	<b>33</b>	<b>52</b>	<b>77</b>	<b>33</b>	<b>40</b>	<b>50</b>	<b>51</b>	<b>632</b>		
Southern Region IAIU	CPS	88	82	87	120	95	33	22	35	52	36	23	26	26	725		
	CWS	0	0	0	0	0	0	0	0	0	0	0	0	0	0		
	<b>Total</b>	<b>88</b>	<b>82</b>	<b>87</b>	<b>120</b>	<b>95</b>	<b>33</b>	<b>22</b>	<b>35</b>	<b>52</b>	<b>36</b>	<b>23</b>	<b>26</b>	<b>26</b>	<b>725</b>		
Western Region IAIU	CPS	0	0	0	0	0	58	65	82	38	51	57	85	74	510		
	CWS	0	0	0	0	0	0	0	0	0	0	0	0	0	0		
	<b>Total</b>	<b>0</b>	<b>0</b>	<b>0</b>	<b>0</b>	<b>0</b>	<b>58</b>	<b>65</b>	<b>82</b>	<b>38</b>	<b>51</b>	<b>57</b>	<b>85</b>	<b>74</b>	<b>510</b>		
IAIU CPS Subtotal		CPS	270	300	281	329	252	207	172	275	298	205	199	251	257	3,296	
IAIU CWS Subtotal		CWS	0	0	0	0	0	0	1	0	0	1	0	0	2		
IAIU Subtotal		Total	270	300	281	329	252	207	173	275	298	206	199	251	257	3,298	
County and IAIU CPS Subtotal		CPS	5,175	5,313	5,238	5,898	4,816	4,291	4,071	5,177	5,680	4,683	4,611	5,189	4,692	64,834	
County and IAIU CWS Subtotal		CWS	1,073	1,068	1,050	1,067	878	899	861	974	1,076	902	892	1,049	926	12,715	
Unable to Determine(1)		Total	85	83	108	110	68	75	97	87	101	62	69	62	66	1,073	
Other Offices		Total	8	7	4	11	1	3	1	1	4	4	1	2	3	50	
Grand Total		Total	6,341	6,471	6,400	7,086	5,763	5,268	5,030	6,239	6,861	5,651	5,573	6,302	5,687	78,672	

<sup>(1)</sup>CPS Reports or CWS Referrals not assigned to an office through the Assignment Designee, but were assigned to an office for an assessment or investigation.