



Child Protection and Permanency

Monthly Screening and Investigation Report March 2019

Christine Norbut Beyer, MSW
Commissioner

April 8, 2019



Table of Contents

Table 1: NJ State Central Registry Activity: Monthly Child Abuse and Neglect Hotline Calls, Intakes and Assignments to Child Protection & Permanency (CP&P) Offices

Chart 1: CP&P Annual Trends in Child Protection Services (CPS) Reports and Child Welfare Services (CWS) Referrals

Table 2: Assignments to CP&P Offices: CPS Reports and CWS Referrals

Table 3: Source of CPS Reports and CWS Referrals

Table 4: Monthly Count of CPS Reports and CWS Referrals Assigned to Counties

Table 5: Monthly Count of CPS Reports and CWS Referrals Assigned to CP&P Local Offices



Table 1: NJ State Central Registry Activity: Monthly Child Abuse and Neglect Hotline Calls, Intakes and Assignments to CP&P Offices^{1,2,7}

2018 - 2019	Hotline Call Activity				Intakes Recorded in NJ SPIRIT ^{6,8}												Assignments to CP&P Offices				
	Total Calls to SCR ³	Abandon Calls ⁴	Average Time to Answer (seconds)	Resulting NJS Intakes ⁵	CPS Reports		CWS Referrals		No Action Required (NAR)		Related Information (RI)		Information & Referral (I&R)		Information Only (IO)		CPS Reports		CWS Referrals		Total
					n	%	n	%	n	%	n	%	n	%	n	%	n	%	n	%	
March 2018	14,714	804	55	15,869	5,212	32.8%	1,727	10.9%	288	1.8%	4,187	26.4%	1,855	11.7%	2,600	16.4%	5,212	75.1%	1,727	24.9%	6,939
April 2018	14,148	727	54	15,227	5,275	34.6%	1,603	10.5%	252	1.7%	3,952	26.0%	1,818	11.9%	2,327	15.3%	5,275	76.7%	1,601	23.3%	6,876
May 2018	15,956	1,482	69	16,668	5,920	35.5%	1,833	11.0%	316	1.9%	4,104	24.6%	1,997	12.0%	2,498	15.0%	5,920	76.3%	1,836	23.7%	7,756
June 2018	13,796	1,021	72	14,490	4,948	34.1%	1,614	11.1%	264	1.8%	3,662	25.3%	1,693	11.7%	2,309	15.9%	4,948	75.4%	1,615	24.6%	6,563
July 2018	11,406	407	35	12,497	4,011	32.1%	1,307	10.5%	214	1.7%	3,387	27.1%	1,374	11.0%	2,204	17.6%	4,011	75.4%	1,308	24.6%	5,319
August 2018	11,633	460	43	12,708	4,102	32.3%	1,409	11.1%	252	2.0%	3,455	27.2%	1,307	10.3%	2,183	17.2%	4,102	74.4%	1,408	25.6%	5,510
September 2018	13,554	925	64	14,277	4,748	33.3%	1,632	11.4%	217	1.5%	3,914	27.4%	1,448	10.1%	2,318	16.2%	4,748	74.4%	1,634	25.6%	6,382
October 2018	15,489	904	68	16,470	5,790	35.2%	2,008	12.2%	260	1.6%	4,103	24.9%	1,827	11.1%	2,482	15.1%	5,790	74.2%	2,011	25.8%	7,801
November 2018	13,533	1,111	80	14,067	4,973	35.4%	1,621	11.5%	210	1.5%	3,749	26.7%	1,453	10.3%	2,061	14.7%	4,973	75.4%	1,620	24.6%	6,593
December 2018	13,020	971	78	13,683	4,891	35.7%	1,524	11.1%	174	1.3%	3,518	25.7%	1,446	10.6%	2,130	15.6%	4,891	76.2%	1,527	23.8%	6,418
January 2019	14,566	1,097	91	15,153	5,443	35.9%	1,858	12.3%	224	1.5%	3,764	24.8%	1,673	11.0%	2,191	14.5%	5,443	74.6%	1,858	25.4%	7,301
February 2019	12,995	1,095	102	13,518	4,811	35.6%	1,626	12.0%	213	1.6%	3,476	25.7%	1,506	11.1%	1,886	14.0%	4,811	74.7%	1,628	25.3%	6,439
March 2019	14,637	1,422	112	15,528	5,677	36.6%	1,826	11.8%	212	1.4%	3,825	24.6%	1,762	11.3%	2,226	14.3%	5,677	75.7%	1,824	24.3%	7,501
	13,804	956	71	14,627	5,062	34.6%	1,661	11.4%	238	1.6%	3,777	25.8%	1,628	11.1%	2,263	15.5%	5,062	75.3%	1,661	24.7%	6,723
Overall Total	179,447	12,426		190,155	65,801		21,588		3,096		49,096		21,159		29,415		65,801	75.3%	21,597	24.7%	87,398

¹ Comes from three distinct sources: (1) the Automatic Call Distribution (ACD) phone system; which keeps a count of the number of calls and call routing; (2) Monthly NJSpirit Intakes; which record decision making on calls received by hotline screeners, and (3) NJSpirit extracts of assigned CWS Referrals and CPS Reports.

² The number of Intakes, CPS Reports, and CWS Referrals are based on an extract from NJSpirit. Data extracted by the Office of Research, Evaluation, and Reporting on **April 8, 2019** includes all Intakes, CPS Reports, and CWS Referrals received from **March 1, 2019 through March 31, 2019**.

³ The number calls received through the ACD System that were directed to a screener from any call-in phone number.

⁴ The number of calls received through the ACD System that are abandoned either while waiting in queue or while ringing.

⁵ The number of Intakes entered in NJSpirit from the number of calls received.

⁶ The number of Intakes recorded in NJSpirit, by type of Intake. There is not a one-to-one relationship between an ACD call and an Intake; multiple calls to State Central Registry (SCR) may result in a single Intake, or one call may result in multiple Intakes.

⁷ Intake: The process of documenting: a report of alleged abuse or neglect of a child (CPS); a request for services on behalf of a child, or a referral of a child for services (CWS); a call in which the caller provides additional or clarifying information about a current service case or active investigation (RI); informing a caller of, or referring a caller to, services available from other private or public sources (I&R); a call that requires no action by CP&P (NAR); or a response to a simple inquiry (IO).

⁸ NJ SPIRIT: NJ Statewide Protection Investigation and Reporting Information Tool case management system

CP&P Annual Trends in CPS Reports and CWS Referrals

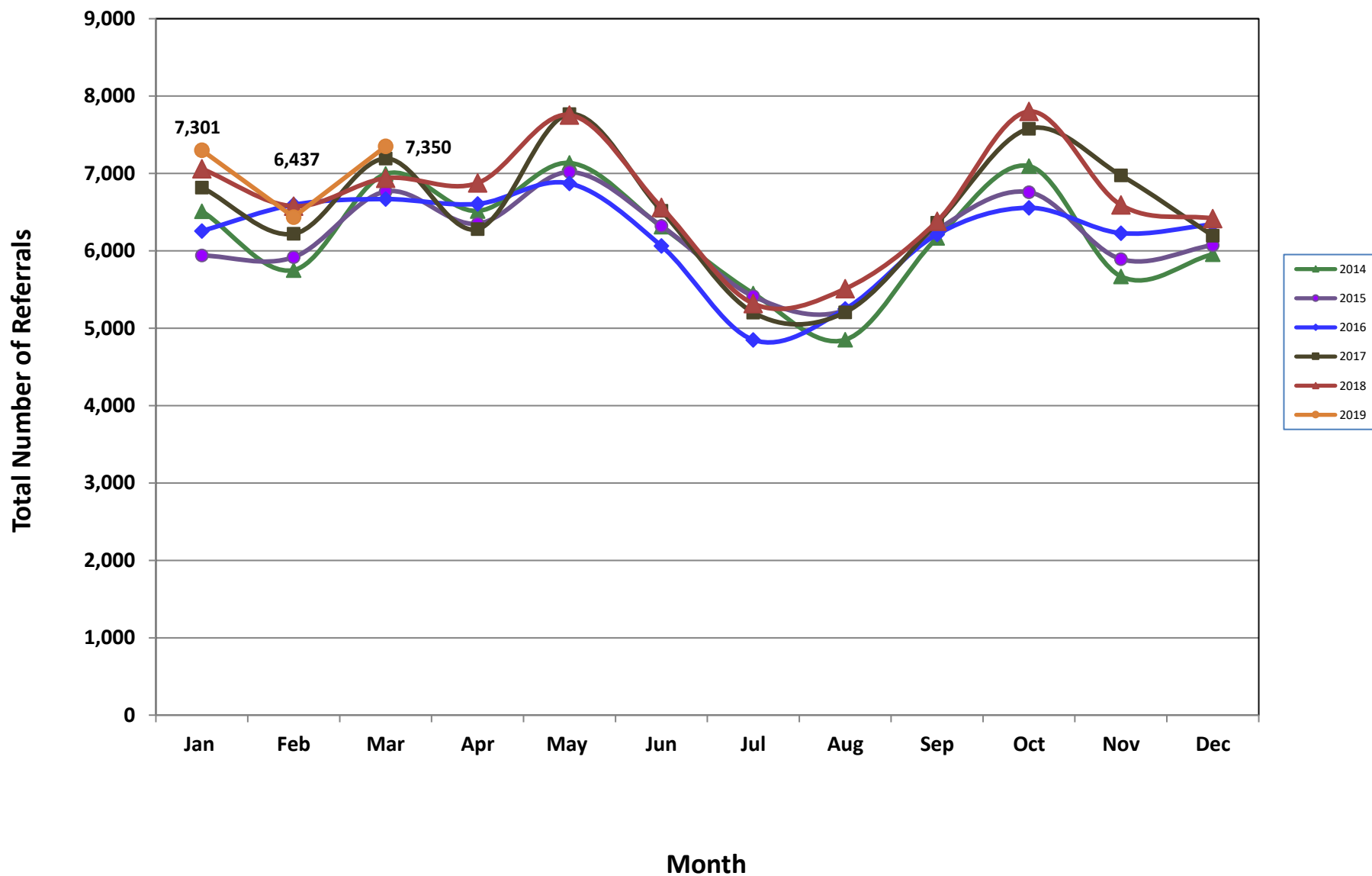


Table 2: Assignments to CP&P Offices: CPS Reports and CWS Referrals¹

Intake Date ³		CPS Reports ²	CWS Referrals ²	Total Assignments ²
2014	Jan 2014	5,097	1,416	6,513
	Feb 2014	4,457	1,295	5,752
	Mar 2014	5,408	1,586	6,994
	Apr 2014	5,049	1,467	6,516
	May 2014	5,501	1,635	7,136
	Jun 2014	4,796	1,517	6,313
	Jul 2014	4,202	1,247	5,449
	Aug 2014	3,629	1,222	4,851
	Sep 2014	4,668	1,498	6,166
	Oct 2014	5,509	1,586	7,095
	Nov 2014	4,254	1,416	5,670
	Dec 2014	4,509	1,447	5,956
	Total	57,079	17,332	74,411
2015	Jan 2015	4,549	1,391	5,940
	Feb 2015	4,574	1,345	5,919
	Mar 2015	5,187	1,580	6,767
	Apr 2015	4,967	1,384	6,351
	May 2015	5,457	1,561	7,018
	Jun 2015	4,887	1,436	6,323
	Jul 2015	4,140	1,273	5,413
	Aug 2015	3,978	1,256	5,234
	Sep 2015	4,776	1,495	6,271
	Oct 2015	5,139	1,619	6,758
	Nov 2015	4,417	1,477	5,894
	Dec 2015	4,530	1,544	6,074
	Total	56,601	17,361	73,962
2016	Jan 2016	4,686	1,571	6,257
	Feb 2016	4,974	1,622	6,596
	Mar 2016	5,000	1,669	6,669
	Apr 2016	5,065	1,542	6,607
	May 2016	5,238	1,633	6,871
	Jun 2016	4,602	1,461	6,063
	Jul 2016	3,663	1,187	4,850
	Aug 2016	3,941	1,307	5,248
	Sep 2016	4,654	1,559	6,213
	Oct 2016	4,935	1,622	6,557
	Nov 2016	4,677	1,552	6,229
	Dec 2016	4,762	1,580	6,342
	Total	56,197	18,305	74,502

Table 2: Assignments to CP&P Offices: CPS Reports and CWS Referrals¹

Intake Date ³		CPS Reports ²	CWS Referrals ²	Total Assignments ²
2017	Jan 2017	5,111	1,708	6,819
	Feb 2017	4,716	1,504	6,220
	Mar 2017	5,349	1,843	7,192
	Apr 2017	4,790	1,490	6,280
	May 2017	5,847	1,919	7,766
	Jun 2017	4,853	1,665	6,518
	Jul 2017	3,814	1,389	5,203
	Aug 2017	3,866	1,340	5,206
	Sep 2017	4,719	1,643	6,362
	Oct 2017	5,613	1,966	7,579
	Nov 2017	5,223	1,753	6,976
	Dec 2017	4,601	1,594	6,195
	Total	58,502	19,814	78,316
2018	Jan 2018	5,276	1,784	7,060
	Feb 2018	4,933	1,644	6,577
	Mar 2018	5,212	1,727	6,939
	Apr 2018	5,275	1,601	6,876
	May 2018	5,920	1,836	7,756
	Jun 2018	4,948	1,615	6,563
	Jul 2018	4,011	1,308	5,319
	Aug 2018	4,102	1,408	5,510
	Sep 2018	4,748	1,634	6,382
	Oct 2018	5,790	2,011	7,801
	Nov 2018	4,973	1,620	6,593
	Dec 2018	4,891	1,527	6,418
	Total	60,079	19,715	79,794
2019	Jan 2019	5,443	1,858	7,301
	Feb 2019	4,811	1,628	6,439
	Mar 2019	5,677	1,824	7,501
	Total	15,931	5,310	21,241
Grand Total		304,389	97,837	402,226

¹Source of Data: NJ SPIRIT

²A CPS Report or a CWS Referral may include multiple children in a family, with one or more allegation or request for services. In these cases, each CPS Report or CWS Referral is counted once - the CPS Report or the CWS Referral is the unit of analysis rather than the child.

³Prior to January 2014, the number of CPS Reports and CWS Referrals was based on the type of assignment of the CPS Report or CWS Referral. Beginning in January 2014, the number of CPS Reports and CWS Referrals is based on the number of CPS Reports and CWS Referrals received.

Table 3: Source of CPS Reports and CWS Referrals

CPS Reports and CWS Referrals	Source	Mar 2018	Apr 2018	May 2018	Jun 2018	Jul 2018	Aug 2018	Sep 2018	Oct 2018	Nov 2018	Dec 2018	Jan 2019	Feb 2019	Mar 2019		13 Month Total	
	School Staff	1969	1783	2213	1243	184	118	1237	2256	1769	1643	2151	1887	2388	32%	20,841	24%
	Healthcare Provider	931	932	994	885	904	920	928	1018	954	891	999	858	977	13%	12,191	14%
	Law Enforcement	1149	1179	1264	1220	1238	1201	1251	1188	1186	1186	1131	1156	1290	17%	15,639	18%
	Government Agency	466	417	446	441	436	468	428	521	430	387	417	345	374	5%	5,576	6%
	Parent	469	509	548	574	573	590	569	563	491	481	512	419	513	7%	6,811	8%
	Relative/Friend/Neighbor	440	475	496	517	475	488	475	452	370	393	447	359	399	5%	5,786	7%
	Anonymous	641	628	789	683	538	573	565	769	576	609	656	586	686	9%	8,299	9%
	CP&P	107	130	143	140	115	142	106	131	99	109	125	118	130	2%	1,595	2%
	Court/Legal	131	158	164	154	143	193	141	171	101	132	190	155	162	2%	1,995	2%
	Community Group/Individual	294	325	290	301	290	317	301	301	264	234	274	234	253	3%	3,678	4%
	Facility Staff (incl Correctional Facility)	72	68	97	64	101	135	103	97	86	79	88	57	85	1%	1,132	1%
	Child (Self)	41	38	34	49	38	53	35	51	30	35	23	29	25	0%	481	1%
	Other	207	217	261	272	267	289	228	262	218	226	270	219	204	3%	3,140	4%
	Daycare/Babysitter	22	17	17	20	17	23	15	21	19	13	18	17	15	0%	234	0%
Total	6,939	6,876	7,756	6,563	5,319	5,510	6,382	7,801	6,593	6,418	7,301	6,439	7,501		87,398		

Table 4: Monthly Count of CPS Reports and CWS Referrals Assigned to Counties

County														Average Number of Assignments Last 13 Months	Feb 19 to Mar 19 Numerical Difference
	Mar 2018	Apr 2018	May 2018	Jun 2018	Jul 2018	Aug 2018	Sep 2018	Oct 2018	Nov 2018	Dec 2018	Jan 2019	Feb 2019	Mar 2019		
Atlantic	267	260	326	284	213	231	295	280	264	243	285	274	296	271	22
Bergen	458	374	474	354	291	243	333	467	412	377	460	369	460	390	91
Burlington	290	312	302	304	284	246	270	348	313	318	338	361	337	309	-24
Camden	559	562	643	564	472	485	543	606	515	469	577	485	619	546	134
Cape May	68	95	100	97	80	85	109	87	73	68	103	83	74	86	-9
Cumberland	223	265	266	202	159	205	225	232	204	200	218	191	235	217	44
Essex	778	770	811	713	545	622	666	859	712	694	798	723	795	730	72
Gloucester	239	272	298	231	200	229	215	260	235	233	302	250	272	249	22
Hudson	466	454	509	412	330	342	426	540	420	425	475	410	518	441	108
Hunterdon	58	67	62	56	48	49	57	75	58	59	48	52	71	58	19
Mercer	262	295	330	274	223	247	231	365	298	283	298	301	331	288	30
Middlesex	498	473	534	474	358	366	433	563	426	472	527	476	505	470	29
Monmouth	427	376	446	341	302	277	410	426	380	352	433	333	424	379	91
Morris	245	240	256	199	204	186	215	292	224	242	264	215	244	233	29
Ocean	420	397	427	398	357	371	386	482	450	408	428	382	440	411	58
Passaic	469	448	571	423	307	383	421	567	461	438	482	394	527	453	133
Salem	99	92	90	79	65	77	104	90	72	70	97	71	75	83	4
Somerset	179	174	180	189	141	128	155	200	181	165	160	158	196	170	38
Sussex	102	124	112	118	82	82	99	120	81	97	100	122	116	104	-6
Union	352	321	379	343	260	221	328	396	351	343	401	359	405	343	46
Warren	117	108	117	110	87	105	118	105	93	104	89	73	118	103	45
County Subtotals	6,576	6,479	7,233	6,165	5,008	5,180	6,039	7,360	6,223	6,060	6,883	6,082	7,058	6,334	976
Central Region IAIU	63	62	89	64	40	57	39	67	63	47	61	47	61	58	14
Metro Region IAIU	48	52	78	60	40	38	50	65	61	51	55	47	62	54	15
Northern Region IAIU	53	69	88	60	42	34	63	71	70	64	58	74	83	64	9
Southern Region IAIU	74	86	95	71	61	76	67	100	58	71	92	70	85	77	15
IAIU Subtotals	238	269	350	255	183	205	219	303	252	233	266	238	291	254	53
Unable to Determine¹	122	125	169	137	128	122	123	135	117	121	149	119	151	132	32
Other Offices	3	3	4	6	0	3	1	3	1	4	3	0	1	2	1
Grand Total	6,939	6,876	7,756	6,563	5,319	5,510	6,382	7,801	6,593	6,418	7,301	6,439	7,501	6,723	1062

¹CPS Reports or CWS Referrals not assigned to an office through the Assignment Designee, but were assigned to an office for an assessment or investigation.



Table 5: Monthly Count of CPS Reports and CWS Referrals Assigned to CP&P Local Offices

County	Local Office	Type of Referral	Mar 2018	Apr 2018	May 2018	Jun 2018	Jul 2018	Aug 2018	Sep 2018	Oct 2018	Nov 2018	Dec 2018	Jan 2019	Feb 2019	Mar 2019	Total
ATLANTIC	Atlantic East	CPS	131	118	157	132	97	106	132	132	139	107	140	128	148	1,667
		CWS	28	32	40	49	31	46	43	50	40	43	32	33	42	509
		Total	159	150	197	181	128	152	175	182	179	150	172	161	190	2,176
	Atlantic West	CPS	75	88	98	74	68	60	89	80	73	72	86	84	81	1,028
		CWS	33	22	31	29	17	19	31	18	12	21	27	29	25	314
		Total	108	110	129	103	85	79	120	98	85	93	113	113	106	1,342
	County Totals	CPS	206	206	255	206	165	166	221	212	212	179	226	212	229	2,695
		CWS	61	54	71	78	48	65	74	68	52	64	59	62	67	823
		Total	267	260	326	284	213	231	295	280	264	243	285	274	296	3,518
BERGEN	Bergen Central	CPS	144	122	141	112	76	59	88	147	103	119	137	98	129	1,475
		CWS	54	37	58	52	32	25	44	60	51	39	67	56	45	620
		Total	198	159	199	164	108	84	132	207	154	158	204	154	174	2,095
	Bergen South	CPS	198	144	199	119	136	112	152	187	188	155	173	139	207	2,109
		CWS	62	71	76	71	47	47	49	73	70	64	83	76	79	868
		Total	260	215	275	190	183	159	201	260	258	219	256	215	286	2,977
	County Totals	CPS	342	266	340	231	212	171	240	334	291	274	310	237	336	3,584
		CWS	116	108	134	123	79	72	93	133	121	103	150	132	124	1,488
		Total	458	374	474	354	291	243	333	467	412	377	460	369	460	5,072
BURLINGTON	Burlington East	CPS	118	116	104	115	117	93	93	131	124	128	132	150	128	1,549
		CWS	35	36	46	45	37	33	31	53	38	38	41	41	43	517
		Total	153	152	150	160	154	126	124	184	162	166	173	191	171	2,066
	Burlington West	CPS	105	108	120	114	100	83	113	124	121	123	123	133	122	1,489
		CWS	32	52	32	30	30	37	33	40	30	29	42	37	44	468
		Total	137	160	152	144	130	120	146	164	151	152	165	170	166	1,957
	County Totals	CPS	223	224	224	229	217	176	206	255	245	251	255	283	250	3,038
		CWS	67	88	78	75	67	70	64	93	68	67	83	78	87	985
		Total	290	312	302	304	284	246	270	348	313	318	338	361	337	4,023
CAMDEN	Camden Central	CPS	126	111	141	109	113	109	103	116	110	104	137	98	146	1,523
		CWS	39	32	47	33	27	27	36	41	27	27	31	34	34	435
		Total	165	143	188	142	140	136	139	157	137	131	168	132	180	1,958
	Camden East	CPS	129	139	127	113	99	99	106	110	103	81	95	83	123	1,407
		CWS	32	30	30	41	32	36	44	39	29	26	35	21	38	433
		Total	161	169	157	154	131	135	150	149	132	107	130	104	161	1,840
	Camden North	CPS	105	106	120	115	80	74	91	119	94	96	110	111	110	1,331
		CWS	34	25	41	44	26	33	34	42	31	19	36	42	43	450
		Total	139	131	161	159	106	107	125	161	125	115	146	153	153	1,781
	Camden South	CPS	75	100	113	86	72	85	98	108	89	91	103	73	97	1,190
		CWS	19	19	24	23	23	22	31	31	32	25	30	23	28	330
		Total	94	119	137	109	95	107	129	139	121	116	133	96	125	1,520
	County Totals	CPS	435	456	501	423	364	367	398	453	396	372	445	365	476	5,451
		CWS	124	106	142	141	108	118	145	153	119	97	132	120	143	1,648
		Total	559	562	643	564	472	485	543	606	515	469	577	485	619	7,099
CAPE MAY	Cape May	CPS	46	69	81	76	60	73	89	64	56	60	79	63	58	874
		CWS	22	26	19	21	20	12	20	23	17	8	24	20	16	248
		Total	68	95	100	97	80	85	109	87	73	68	103	83	74	1,122
	County Totals	CPS	46	69	81	76	60	73	89	64	56	60	79	63	58	874
		CWS	22	26	19	21	20	12	20	23	17	8	24	20	16	248
		Total	68	95	100	97	80	85	109	87	73	68	103	83	74	1,122
CUMBERLAND	Cumberland East	CPS	55	60	56	58	47	44	60	55	47	45	43	54	68	692
		CWS	18	18	17	15	15	13	15	18	15	13	17	9	13	196
		Total	73	78	73	73	62	57	75	73	62	58	60	63	81	888
	Cumberland West	CPS	126	146	146	111	82	118	118	116	106	116	119	100	124	1,528
		CWS	24	41	47	18	15	30	32	43	36	26	39	28	30	409
		Total	150	187	193	129	97	148	150	159	142	142	158	128	154	1,937
	County Totals	CPS	181	206	202	169	129	162	178	171	153	161	162	154	192	2,220
		CWS	42	59	64	33	30	43	47	61	51	39	56	37	43	605
		Total	223	265	266	202	159	205	225	232	204	200	218	191	235	2,825

Data in this report is preliminary and may differ from any final report. This report is produced to ensure continuous quality improvement throughout DCF.

Table 5: Monthly Count of CPS Reports and CWS Referrals Assigned to CP&P Local Offices

County	Local Office	Type of Referral	Mar 2018	Apr 2018	May 2018	Jun 2018	Jul 2018	Aug 2018	Sep 2018	Oct 2018	Nov 2018	Dec 2018	Jan 2019	Feb 2019	Mar 2019	Total
			ESSEX													
Essex Central	CPS	107	103	113	95	70	92	68	97	103	90	107	97	107	1,249	
	CWS	35	36	39	23	21	23	41	35	35	26	37	33	42	426	
Total		142	139	152	118	91	115	109	132	138	116	144	130	149	1,675	
Essex North	CPS	75	70	83	62	41	61	65	82	74	65	72	76	73	899	
	CWS	34	24	24	35	18	15	28	31	25	20	32	25	24	335	
Total		109	94	107	97	59	76	93	113	99	85	104	101	97	1,234	
Essex South	CPS	63	83	65	92	46	76	63	80	70	77	86	76	94	971	
	CWS	21	20	24	25	27	17	28	44	24	20	27	46	35	358	
Total		84	103	89	117	73	93	91	124	94	97	113	122	129	1329	
Newark Center City	CPS	105	88	105	91	75	81	102	123	91	98	103	96	89	1247	
	CWS	34	38	42	33	26	26	27	44	36	25	38	32	33	434	
Total		139	126	147	124	101	107	129	167	127	123	141	128	122	1681	
Newark Northeast	CPS	97	99	104	81	71	84	76	117	105	101	111	83	112	1241	
	CWS	44	38	40	42	24	35	29	58	30	24	28	26	35	453	
Total		141	137	144	123	95	119	105	175	135	125	139	109	147	1694	
Newark South	CPS	116	128	138	106	95	76	93	111	92	102	118	103	116	1394	
	CWS	47	43	34	28	31	36	46	37	27	46	39	30	35	479	
Total		163	171	172	134	126	112	139	148	119	148	157	133	151	1873	
County Totals	CPS	563	571	608	527	398	470	467	610	535	533	597	531	591	7001	
	CWS	215	199	203	186	147	152	199	249	177	161	201	192	204	2485	
Total		778	770	811	713	545	622	666	859	712	694	798	723	795	9486	
GLOUCESTER																
Gloucester East	CPS	79	113	118	79	75	76	86	104	85	70	108	88	104	1185	
	CWS	24	41	26	18	20	31	22	41	25	30	29	28	29	364	
Total		103	154	144	97	95	107	108	145	110	100	137	116	133	1549	
Gloucester West	CPS	100	96	118	100	82	101	79	92	95	105	130	101	112	1311	
	CWS	36	22	36	34	23	21	28	23	30	28	35	33	27	376	
Total		136	118	154	134	105	122	107	115	125	133	165	134	139	1687	
County Totals	CPS	179	209	236	179	157	177	165	196	180	175	238	189	216	2496	
	CWS	60	63	62	52	43	52	50	64	55	58	64	61	56	740	
Total		239	272	298	231	200	229	215	260	235	233	302	250	272	3236	
HUDSON																
Hudson Central	CPS	98	115	131	93	83	89	93	141	91	117	107	104	129	1391	
	CWS	36	36	56	57	38	39	43	43	37	41	47	37	46	556	
Total		134	151	187	150	121	128	136	184	128	158	154	141	175	1947	
Hudson North	CPS	92	98	79	62	34	51	71	92	62	72	87	67	81	948	
	CWS	32	26	38	22	19	14	26	33	28	27	40	28	28	361	
Total		124	124	117	84	53	65	97	125	90	99	127	95	109	1309	
Hudson South	CPS	65	53	47	55	38	43	41	60	48	48	55	47	66	666	
	CWS	24	15	18	19	16	17	34	23	35	22	15	22	25	285	
Total		89	68	65	74	54	60	75	83	83	70	70	69	91	951	
Hudson West	CPS	80	80	102	72	72	59	84	94	87	72	87	69	93	1051	
	CWS	39	31	38	32	30	30	34	54	32	26	37	36	50	469	
Total		119	111	140	104	102	89	118	148	119	98	124	105	143	1520	
County Totals	CPS	335	346	359	282	227	242	289	387	288	309	336	287	369	4056	
	CWS	131	108	150	130	103	100	137	153	132	116	139	123	149	1671	
Total		466	454	509	412	330	342	426	540	420	425	475	410	518	5727	
HUNTERDON																
Hunterdon	CPS	42	47	44	43	37	40	40	56	44	47	33	33	52	558	
	CWS	16	20	18	13	11	9	17	19	14	12	15	19	19	202	
Total		58	67	62	56	48	49	57	75	58	59	48	52	71	760	
County Totals	CPS	42	47	44	43	37	40	40	56	44	47	33	33	52	558	
	CWS	16	20	18	13	11	9	17	19	14	12	15	19	19	202	
Total		58	67	62	56	48	49	57	75	58	59	48	52	71	760	
MERCER																
Mercer North	CPS	95	124	125	107	81	107	84	139	113	110	117	114	125	1441	
	CWS	42	34	39	32	31	28	25	57	50	31	39	43	41	492	
Total		137	158	164	139	112	135	109	196	163	141	156	157	166	1933	
Mercer South	CPS	90	104	134	105	86	78	89	125	95	109	101	104	125	1345	
	CWS	35	33	32	30	25	34	33	44	40	33	41	40	40	460	
Total		125	137	166	135	111	112	122	169	135	142	142	144	165	1805	
County Totals	CPS	185	228	259	212	167	185	173	264	208	219	218	218	250	2786	
	CWS	77	67	71	62	56	62	58	101	90	64	80	83	81	952	
Total		262	295	330	274	223	247	231	365	298	283	298	301	331	3738	

Data in this report is preliminary and may differ from any final report. This report is produced to ensure continuous quality improvement throughout DCF.

Table 5: Monthly Count of CPS Reports and CWS Referrals Assigned to CP&P Local Offices

County	Local Office	Type of Referral														Total
			Mar 2018	Apr 2018	May 2018	Jun 2018	Jul 2018	Aug 2018	Sep 2018	Oct 2018	Nov 2018	Dec 2018	Jan 2019	Feb 2019	Mar 2019	
SUSSEX	Sussex	CPS	70	90	87	94	62	60	72	90	64	67	77	88	87	1008
		CWS	32	34	25	24	20	22	27	30	17	30	23	34	29	347
		Total	102	124	112	118	82	82	99	120	81	97	100	122	116	1355
	County Totals	CPS	70	90	87	94	62	60	72	90	64	67	77	88	87	1008
		CWS	32	34	25	24	20	22	27	30	17	30	23	34	29	347
		Total	102	124	112	118	82	82	99	120	81	97	100	122	116	1355
UNION	Union Central	CPS	87	88	98	78	67	54	76	98	85	81	104	87	99	1102
		CWS	29	25	28	25	23	21	25	33	26	34	43	27	32	371
		Total	116	113	126	103	90	75	101	131	111	115	147	114	131	1473
	Union East	CPS	98	74	89	92	63	48	89	103	93	94	94	104	98	1139
		CWS	33	26	27	32	24	21	34	36	29	26	35	38	45	406
		Total	131	100	116	124	87	69	123	139	122	120	129	142	143	1545
	Union West	CPS	83	81	98	91	58	54	77	84	88	83	98	79	98	1072
		CWS	22	27	39	25	25	23	27	42	30	25	27	24	33	369
		Total	105	108	137	116	83	77	104	126	118	108	125	103	131	1441
	County Totals	CPS	268	243	285	261	188	156	242	285	266	258	296	270	295	3313
		CWS	84	78	94	82	72	65	86	111	85	85	105	89	110	1146
		Total	352	321	379	343	260	221	328	396	351	343	401	359	405	4459
	WARREN	Warren	CPS	85	88	93	85	59	82	86	78	71	77	61	54	88
CWS			32	20	24	25	28	23	32	27	22	27	28	19	30	337
Total			117	108	117	110	87	105	118	105	93	104	89	73	118	1344
County Totals		CPS	85	88	93	85	59	82	86	78	71	77	61	54	88	1007
		CWS	32	20	24	25	28	23	32	27	22	27	28	19	30	337
		Total	117	108	117	110	87	105	118	105	93	104	89	73	118	1344
County CPS Referral Total		CPS	4,908	4,929	5,469	4,611	3,755	3,825	4,461	5,418	4,653	4,587	5,091	4,502	5,302	61,511
County CWS Referral Total		CWS	1,668	1,550	1,764	1,554	1,253	1,355	1,578	1,942	1,570	1,473	1,792	1,580	1,756	20,835
County Referral Total		Total	6,576	6,479	7,233	6,165	5,008	5,180	6,039	7,360	6,223	6,060	6,883	6,082	7,058	82,346
Central Region IAIU	CPS	63	62	89	64	40	57	39	67	63	47	61	47	61	760	
	CWS	0	0	0	0	0	0	0	0	0	0	0	0	0	0	
	Total	63	62	89	64	40	57	39	67	63	47	61	47	61	760	
Metro Region IAIU	CPS	48	52	78	60	40	38	50	65	61	51	55	47	62	707	
	CWS	0	0	0	0	0	0	0	0	0	0	0	0	0	0	
	Total	48	52	78	60	40	38	50	65	61	51	55	47	62	707	
Northern Region IAIU	CPS	53	69	88	60	42	34	63	71	70	64	58	74	83	829	
	CWS	0	0	0	0	0	0	0	0	0	0	0	0	0	0	
	Total	53	69	88	60	42	34	63	71	70	64	58	74	83	829	
Southern Region IAIU	CPS	74	86	95	71	61	76	67	100	58	71	92	70	85	1,006	
	CWS	0	0	0	0	0	0	0	0	0	0	0	0	0	0	
	Total	74	86	95	71	61	76	67	100	58	71	92	70	85	1,006	
IAIU CPS Subtotal		CPS	238	269	350	255	183	205	219	303	252	233	266	238	291	3,302
IAIU CWS Subtotal		CWS	0	0	0	0	0	0	0	0	0	0	0	0	0	0
IAIU Subtotal		Total	238	269	350	255	183	205	219	303	252	233	266	238	291	3,302
County and IAIU CPS Subtotal		CPS	5,146	5,198	5,819	4,866	3,938	4,030	4,680	5,721	4,905	4,820	5,357	4,740	5,593	64,813
County and IAIU CWS Subtotal		CWS	1,668	1,550	1,764	1,554	1,253	1,355	1,578	1,942	1,570	1,473	1,792	1,580	1,756	20,835
Unable to Determine⁽¹⁾		Total	122	125	169	137	128	122	123	135	117	121	149	119	151	1,718
Other Offices		Total	3	3	4	6	0	3	1	3	1	4	3	0	1	32
Grand Total		Total	6,939	6,876	7,756	6,563	5,319	5,510	6,382	7,801	6,593	6,418	7,301	6,439	7,501	87,398

⁽¹⁾CPS Reports or CWS Referrals not assigned to an office through the Assignment Designee, but were assigned to an office for an assessment or investigation.