



## **Child Protection and Permanency**

# **Monthly Screening and Investigation Report April 2018**

Christine Norbut Beyer, MSW  
Commissioner

May 8, 2018



## Table of Contents

Table 1: NJ State Central Registry Activity: Monthly Child Abuse and Neglect Hotline Calls, Intakes and Assignments to Child Protection & Permanency (CP&P) Offices

---

Chart 1: CP&P Annual Trends in Child Protection Services (CPS) Reports and Child Welfare Services (CWS) Referrals

---

Table 2: Assignments to CP&P Offices: CPS Reports and CWS Referrals

---

Table 3: Source of CPS Reports and CWS Referrals

---

Table 4: Monthly Count of CPS Reports and CWS Referrals Assigned to Counties

---

Table 5: Monthly Count of CPS Reports and CWS Referrals Assigned to CP&P Local Offices

---

**Table 1: NJ State Central Registry Activity: Monthly Child Abuse and Neglect Hotline Calls, Intakes and Assignments to CP&P Offices<sup>1,2,7</sup>**

2017 - 2018	Hotline Call Activity				Intakes Recorded in NJ SPIRIT <sup>6,8</sup>												Assignments to CP&P Offices				
	Total Calls to SCR <sup>3</sup>	Abandon Calls <sup>4</sup>	Average Time to Answer (seconds)	Resulting NJS Intakes <sup>5</sup>	CPS Reports		CWS Referrals		No Action Required (NAR)		Related Information (RI)		Information & Referral (I&R)		Information Only (IO)		CPS Reports		CWS Referrals		Total
					n	%	n	%	n	%	n	%	n	%	n	%	n	%	n	%	
April 2017	13,397	575	36	14,760	4,790	32.5%	1,489	10.1%	420	2.8%	4,037	27.4%	1,607	10.9%	2,417	16.4%	4,790	76.3%	1,490	23.7%	6,280
May 2017	16,045	823	49	17,359	5,847	33.7%	1,919	11.1%	378	2.2%	4,509	26.0%	2,028	11.7%	2,678	15.4%	5,847	75.3%	1,919	24.7%	7,766
June 2017	13,832	617	41	15,143	4,853	32.0%	1,664	11.0%	476	3.1%	4,063	26.8%	1,642	10.8%	2,445	16.1%	4,853	74.5%	1,665	25.5%	6,518
July 2017	12,245	710	57	13,369	3,814	28.5%	1,389	10.4%	336	2.5%	3,877	29.0%	1,436	10.7%	2,517	18.8%	3,814	73.3%	1,389	26.7%	5,203
August 2017	11,672	445	38	12,927	3,866	29.9%	1,338	10.4%	393	3.0%	3,447	26.7%	1,535	11.9%	2,348	18.2%	3,866	74.3%	1,340	25.7%	5,206
September 2017	13,450	570	40	14,750	4,719	32.0%	1,642	11.1%	381	2.6%	3,951	26.8%	1,700	11.5%	2,357	16.0%	4,719	74.2%	1,643	25.8%	6,362
October 2017	15,474	657	45	16,828	5,613	33.4%	1,968	11.7%	305	1.8%	4,353	25.9%	1,883	11.2%	2,706	16.1%	5,613	74.1%	1,966	25.9%	7,579
November 2017	14,446	672	43	15,694	5,223	33.3%	1,750	11.2%	235	1.5%	4,246	27.1%	1,680	10.7%	2,560	16.3%	5,223	74.9%	1,753	25.1%	6,976
December 2017	13,005	560	38	14,194	4,601	32.4%	1,594	11.2%	220	1.5%	3,843	27.1%	1,724	12.1%	2,212	15.6%	4,601	74.3%	1,594	25.7%	6,195
January 2018	14,876	952	60	15,833	5,276	33.3%	1,784	11.3%	242	1.5%	4,346	27.4%	1,755	11.1%	2,430	15.3%	5,276	74.7%	1,784	25.3%	7,060
February 2018	13,558	727	54	14,638	4,933	33.7%	1,643	11.2%	251	1.7%	3,807	26.0%	1,740	11.9%	2,264	15.5%	4,933	75.0%	1,644	25.0%	6,577
March 2018	14,714	804	55	15,869	5,212	32.8%	1,727	10.9%	288	1.8%	4,187	26.4%	1,855	11.7%	2,600	16.4%	5,212	75.1%	1,727	24.9%	6,939
<b>April 2018</b>	<b>14,148</b>	<b>727</b>	<b>54</b>	<b>15,227</b>	<b>5,275</b>	<b>34.6%</b>	<b>1,603</b>	<b>10.5%</b>	<b>252</b>	<b>1.7%</b>	<b>3,952</b>	<b>26.0%</b>	<b>1,818</b>	<b>11.9%</b>	<b>2,327</b>	<b>15.3%</b>	<b>5,275</b>	<b>76.7%</b>	<b>1,601</b>	<b>23.3%</b>	<b>6,876</b>
	<b>13,912</b>	<b>680</b>	<b>47</b>	<b>15,122</b>	<b>4,925</b>	<b>32.6%</b>	<b>1,655</b>	<b>10.9%</b>	<b>321</b>	<b>2.1%</b>	<b>4,048</b>	<b>26.8%</b>	<b>1,723</b>	<b>11.4%</b>	<b>2,451</b>	<b>16.2%</b>	<b>4,925</b>	<b>74.8%</b>	<b>1,655</b>	<b>25.2%</b>	<b>6,580</b>
<b>Overall Total</b>	<b>180,862</b>	<b>8,839</b>		<b>196,591</b>	<b>64,022</b>		<b>21,510</b>		<b>4,177</b>		<b>52,618</b>		<b>22,403</b>		<b>31,861</b>		<b>64,022</b>	<b>74.8%</b>	<b>21,515</b>	<b>25.2%</b>	<b>85,537</b>

<sup>1</sup>Comes from three distinct sources: (1) the Automatic Call Distribution (ACD) phone system; which keeps a count of the number of calls and call routing; (2) Monthly NJSpirit Intakes; which record decision making on calls received by hotline screeners, and (3) NJSpirit extracts of assigned CWS Referrals and CPS Reports.

<sup>2</sup>The number of Intakes, CPS Reports, and CWS Referrals are based on an extract from NJSpirit. Data extracted by the Office of Research, Evaluation, and Reporting on **May 8, 2018** includes all Intakes, CPS Reports, and CWS Referrals received from **April 1, 2018 through April 30, 2018**.

<sup>3</sup>The number calls received through the ACD System that were directed to a screener from any call-in phone number.

<sup>4</sup>The number of calls received through the ACD System that are abandoned either while waiting in queue or while ringing.

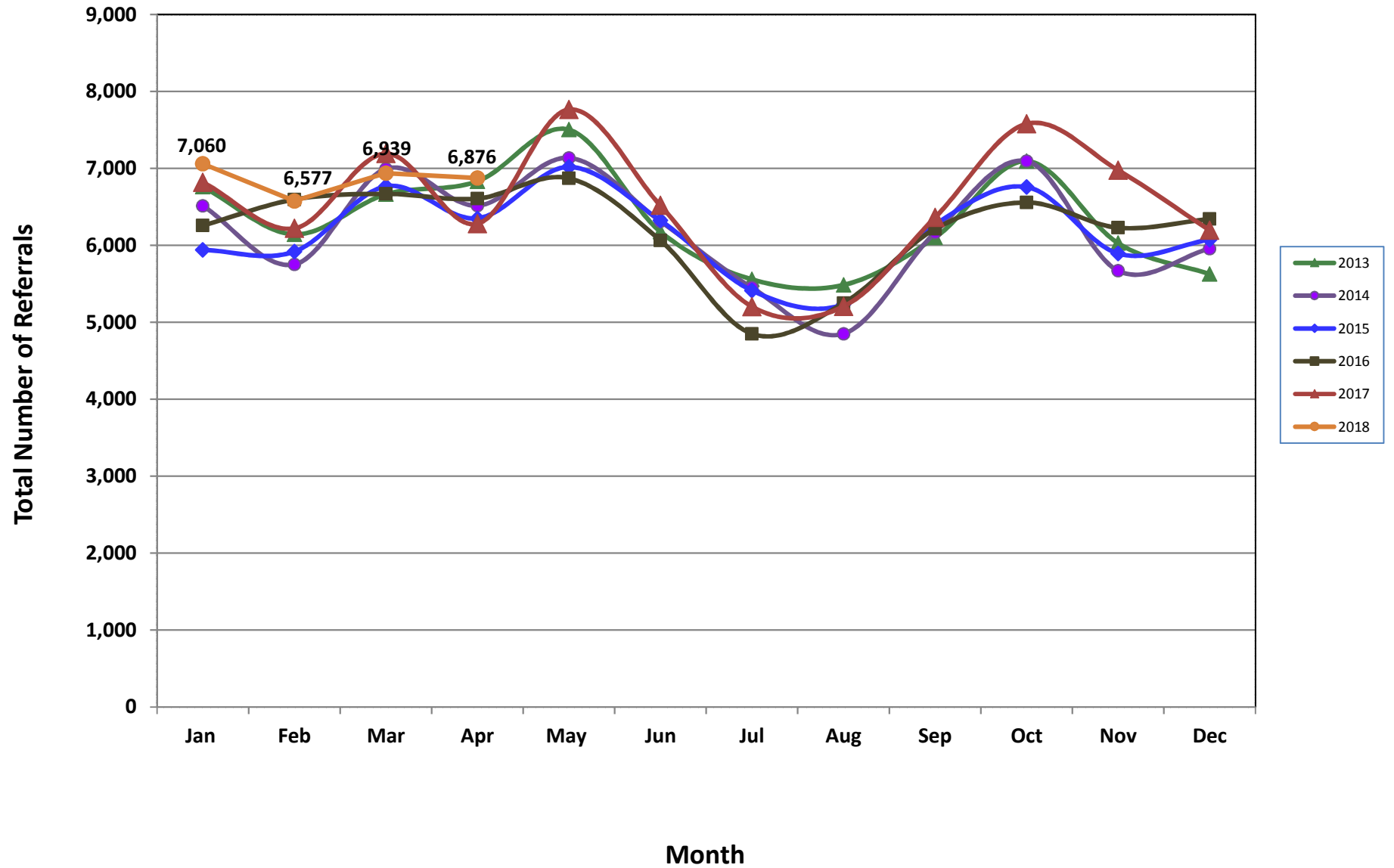
<sup>5</sup>The number of Intakes entered in NJSpirit from the number of calls received.

<sup>6</sup>The number of Intakes recorded in NJSpirit, by type of Intake. There is not a one-to-one relationship between an ACD call and an Intake; multiple calls to State Central Registry (SCR) may result in a single Intake, or one call may result in multiple Intakes.

<sup>7</sup>Intake: The process of documenting: a report of alleged abuse or neglect of a child (CPS); a request for services on behalf of a child, or a referral of a child for services (CWS); a call in which the caller provides additional or clarifying information about a current service case or active investigation (RI); informing a caller of, or referring a caller to, services available from other private or public sources (I&R); a call that requires no action by CP&P (NAR); or a response to a simple inquiry (IO).

<sup>8</sup>NJ SPIRIT: NJ Statewide Protection Investigation and Reporting Information Tool case management system

### CP&P Annual Trends in CPS Reports and CWS Referrals



**Table 2: Assignments to CP&P Offices: CPS Reports and CWS Referrals<sup>1</sup>**

Intake Date <sup>3</sup>		CPS Reports <sup>2</sup>	CWS Referrals <sup>2</sup>	Total Assignments <sup>2</sup>
2013	Jan 2013	5,464	1,296	6,760
	Feb 2013	4,966	1,177	6,143
	Mar 2013	5,355	1,309	6,664
	Apr 2013	5,430	1,402	6,832
	May 2013	5,993	1,510	7,503
	Jun 2013	4,947	1,230	6,177
	Jul 2013	4,330	1,228	5,558
	Aug 2013	4,330	1,155	5,485
	Sep 2013	4,851	1,251	6,102
	Oct 2013	5,614	1,481	7,095
	Nov 2013	4,694	1,334	6,028
	Dec 2013	4,397	1,229	5,626
	<b>Total</b>	<b>60,371</b>	<b>15,602</b>	<b>75,973</b>
2014	Jan 2014	5,097	1,416	6,513
	Feb 2014	4,457	1,295	5,752
	Mar 2014	5,408	1,586	6,994
	Apr 2014	5,049	1,467	6,516
	May 2014	5,501	1,635	7,136
	Jun 2014	4,796	1,517	6,313
	Jul 2014	4,202	1,247	5,449
	Aug 2014	3,629	1,222	4,851
	Sep 2014	4,668	1,498	6,166
	Oct 2014	5,509	1,586	7,095
	Nov 2014	4,254	1,416	5,670
	Dec 2014	4,509	1,447	5,956
	<b>Total</b>	<b>57,079</b>	<b>17,332</b>	<b>74,411</b>
2015	Jan 2015	4,549	1,391	5,940
	Feb 2015	4,574	1,345	5,919
	Mar 2015	5,187	1,580	6,767
	Apr 2015	4,967	1,384	6,351
	May 2015	5,457	1,561	7,018
	Jun 2015	4,887	1,436	6,323
	Jul 2015	4,140	1,273	5,413
	Aug 2015	3,978	1,256	5,234
	Sep 2015	4,776	1,495	6,271
	Oct 2015	5,139	1,619	6,758
	Nov 2015	4,417	1,477	5,894
	Dec 2015	4,530	1,544	6,074
	<b>Total</b>	<b>56,601</b>	<b>17,361</b>	<b>73,962</b>

**Table 2: Assignments to CP&P Offices: CPS Reports and CWS Referrals<sup>1</sup>**

	Intake Date <sup>3</sup>	CPS Reports <sup>2</sup>	CWS Referrals <sup>2</sup>	Total Assignments <sup>2</sup>
2016	Jan 2016	4,686	1,571	6,257
	Feb 2016	4,974	1,622	6,596
	Mar 2016	5,000	1,669	6,669
	Apr 2016	5,065	1,542	6,607
	May 2016	5,238	1,633	6,871
	Jun 2016	4,602	1,461	6,063
	Jul 2016	3,663	1,187	4,850
	Aug 2016	3,941	1,307	5,248
	Sep 2016	4,654	1,559	6,213
	Oct 2016	4,935	1,622	6,557
	Nov 2016	4,677	1,552	6,229
	Dec 2016	4,762	1,580	6,342
		<b>Total</b>	<b>56,197</b>	<b>18,305</b>
2017	Jan 2017	5,111	1,708	6,819
	Feb 2017	4,716	1,504	6,220
	Mar 2017	5,349	1,843	7,192
	Apr 2017	4,790	1,490	6,280
	May 2017	5,847	1,919	7,766
	Jun 2017	4,853	1,665	6,518
	Jul 2017	3,814	1,389	5,203
	Aug 2017	3,866	1,340	5,206
	Sep 2017	4,719	1,643	6,362
	Oct 2017	5,613	1,966	7,579
	Nov 2017	5,223	1,753	6,976
	Dec 2017	4,601	1,594	6,195
		<b>Total</b>	<b>58,502</b>	<b>19,814</b>
2018	Jan 2018	5,276	1,784	7,060
	Feb 2018	4,933	1,644	6,577
	Mar 2018	5,212	1,727	6,939
	Apr 2018	5,275	1,601	6,876
		<b>Total</b>	<b>20,696</b>	<b>6,756</b>
<b>Grand Total</b>		<b>309,446</b>	<b>95,170</b>	<b>404,616</b>

<sup>1</sup>Source of Data: NJ SPIRIT

<sup>2</sup>A CPS Report or a CWS Referral may include multiple children in a family, with one or more allegation or request for services. In these cases, each CPS Report or CWS Referral is counted once - the CPS Report or the CWS Referral is the unit of analysis rather than the child.

<sup>3</sup>Prior to January 2014, the number of CPS Reports and CWS Referrals was based on the type of assignment of the CPS Report or CWS Referral. Beginning in January 2014, the number of CPS Reports and CWS Referrals is based on the number of CPS Reports and CWS Referrals received.

**Table 3: Source of CPS Reports and CWS Referrals**

	Source	Apr 2017	May 2017	Jun 2017	Jul 2017	Aug 2017	Sep 2017	Oct 2017	Nov 2017	Dec 2017	Jan 2018	Feb 2018	Mar 2018	Apr 2018		13 Month Total	
CPS Reports and CWS Referrals	School Staff	1,400	2,167	1,149	150	90	1211	2030	1851	1622	1932	1970	1969	1783	26%	19,324	23%
	Healthcare Provider	824	924	932	818	873	861	968	953	848	1003	809	931	932	14%	11,676	14%
	Law Enforcement	1,133	1,177	1,072	1,148	1169	1180	1236	1130	988	1018	1001	1149	1179	17%	14,580	17%
	Government Agency	376	434	438	400	423	442	475	399	408	392	410	466	417	6%	5,480	6%
	Parent	517	632	586	571	535	528	567	571	487	569	468	469	509	7%	7,009	8%
	Relative/Friend/Neighbor	462	536	525	541	494	462	513	493	396	531	394	440	475	7%	6,262	7%
	Anonymous	633	837	754	580	627	711	753	641	595	602	623	641	628	9%	8,625	10%
	CP&P	110	128	144	145	142	142	150	107	129	125	121	107	130	2%	1,680	2%
	Court/Legal	132	141	183	131	161	162	148	116	135	130	130	131	158	2%	1,858	2%
	Community Group/Individual	296	336	283	288	307	279	320	299	265	318	289	294	325	5%	3,899	5%
	Facility Staff (incl Correctional Facility)	99	95	102	90	92	89	97	75	46	85	70	72	68	1%	1,080	1%
	Child (Self)	22	38	38	35	41	46	32	41	25	49	33	41	38	1%	479	1%
	Other	259	300	296	283	235	236	272	273	237	294	242	207	217	3%	3,351	4%
	Daycare/Babysitter	17	21	16	23	17	13	18	27	14	12	17	22	17	0%	234	0%
	<b>Total</b>		<b>6,280</b>	<b>7,766</b>	<b>6,518</b>	<b>5,203</b>	<b>5,206</b>	<b>6,362</b>	<b>7,579</b>	<b>6,976</b>	<b>6,195</b>	<b>7,060</b>	<b>6,577</b>	<b>6,939</b>	<b>6,876</b>		<b>85,537</b>

**Table 4: Monthly Count of CPS Reports and CWS Referrals Assigned to Counties**

County														Average Number of Assignments Last 13 Months	Mar 18 to Apr 18 Numerical Difference
	Apr 2017	May 2017	Jun 2017	Jul 2017	Aug 2017	Sep 2017	Oct 2017	Nov 2017	Dec 2017	Jan 2018	Feb 2018	Mar 2018	Apr 2018		
Atlantic	233	312	253	214	245	255	293	253	221	291	208	267	260	254	-7
Bergen	370	425	351	284	291	362	428	418	416	394	371	458	374	380	-84
Burlington	262	394	283	262	256	328	371	343	294	315	307	290	312	309	22
Camden	581	629	571	447	492	530	675	576	535	634	526	559	562	563	3
Cape May	79	118	76	80	64	68	86	84	77	82	73	68	95	81	27
Cumberland	243	260	236	203	207	249	252	213	193	250	174	223	265	228	42
Essex	701	878	770	561	585	642	804	721	665	787	695	778	770	720	-8
Gloucester	251	274	280	221	235	232	282	267	252	268	219	239	272	253	33
Hudson	379	519	434	295	290	418	452	454	418	439	386	466	454	416	-12
Hunterdon	39	59	37	49	40	64	64	50	60	60	54	58	67	54	9
Mercer	251	327	272	210	222	308	282	298	232	264	262	262	295	268	33
Middlesex	431	530	404	350	257	420	533	525	419	540	463	498	473	449	-25
Monmouth	349	435	357	276	264	349	442	381	327	413	384	427	376	368	-51
Morris	239	260	239	163	168	216	290	250	219	269	191	245	240	230	-5
Ocean	390	473	377	339	351	342	422	418	356	411	364	420	397	389	-23
Passaic	412	550	424	324	319	425	576	513	421	451	456	469	448	445	-21
Salem	87	90	85	74	54	102	83	100	80	90	68	99	92	85	-7
Somerset	153	180	151	111	117	127	166	169	172	156	157	179	174	155	-5
Sussex	74	102	93	72	92	92	106	111	92	126	90	102	124	98	22
Union	317	375	335	255	246	345	353	343	324	361	366	352	321	330	-31
Warren	84	85	99	109	69	117	131	102	72	94	101	117	108	99	-9
<b>County Subtotals</b>	<b>5,925</b>	<b>7,275</b>	<b>6,127</b>	<b>4,899</b>	<b>4,864</b>	<b>5,991</b>	<b>7,091</b>	<b>6,589</b>	<b>5,845</b>	<b>6,695</b>	<b>5,915</b>	<b>6,576</b>	<b>6,479</b>	<b>6,175</b>	<b>-97</b>
Central Region IAIU	50	75	67	42	55	54	68	73	55	62	58	63	62	60	-1
Metro Region IAIU	51	69	48	34	25	41	58	48	56	54	63	48	52	50	4
Northern Region IAIU	48	87	49	47	34	51	70	58	54	60	53	53	69	56	16
Southern Region IAIU	76	108	80	50	63	66	102	77	84	90	75	74	86	79	12
<b>IAIU Subtotals</b>	<b>225</b>	<b>339</b>	<b>244</b>	<b>173</b>	<b>177</b>	<b>212</b>	<b>298</b>	<b>256</b>	<b>249</b>	<b>266</b>	<b>249</b>	<b>238</b>	<b>269</b>	<b>246</b>	<b>31</b>
<b>Unable to Determine<sup>1</sup></b>	<b>127</b>	<b>152</b>	<b>146</b>	<b>129</b>	<b>163</b>	<b>158</b>	<b>187</b>	<b>129</b>	<b>98</b>	<b>94</b>	<b>407</b>	<b>122</b>	<b>125</b>	<b>157</b>	<b>3</b>
<b>Other Offices</b>	<b>3</b>	<b>0</b>	<b>1</b>	<b>2</b>	<b>2</b>	<b>1</b>	<b>3</b>	<b>2</b>	<b>3</b>	<b>5</b>	<b>6</b>	<b>3</b>	<b>3</b>	<b>3</b>	<b>0</b>
<b>Grand Total</b>	<b>6,280</b>	<b>7,766</b>	<b>6,518</b>	<b>5,203</b>	<b>5,206</b>	<b>6,362</b>	<b>7,579</b>	<b>6,976</b>	<b>6,195</b>	<b>7,060</b>	<b>6,577</b>	<b>6,939</b>	<b>6,876</b>	<b>6,580</b>	<b>-63</b>

<sup>1</sup>CPS Reports or CWS Referrals not assigned to an office through the Assignment Designee, but were assigned to an office for an assessment or investigation.





**Table 5: Monthly Count of CPS Reports and CWS Referrals Assigned to CP&P Local Offices**

County	Local Office	Type of Referral														Total
			Apr 2017	May 2017	Jun 2017	Jul 2017	Aug 2017	Sep 2017	Oct 2017	Nov 2017	Dec 2017	Jan 2018	Feb 2018	Mar 2018	Apr 2018	
ATLANTIC	Atlantic East	CPS	101	141	107	108	102	107	138	99	94	127	95	131	118	1,468
		CWS	34	45	41	32	41	35	47	51	33	36	29	28	32	484
		<b>Total</b>	<b>135</b>	<b>186</b>	<b>148</b>	<b>140</b>	<b>143</b>	<b>142</b>	<b>185</b>	<b>150</b>	<b>127</b>	<b>163</b>	<b>124</b>	<b>159</b>	<b>150</b>	<b>1,952</b>
	Atlantic West	CPS	74	102	76	60	81	90	74	79	75	94	68	75	88	1,036
		CWS	24	24	29	14	21	23	34	24	19	34	16	33	22	317
		<b>Total</b>	<b>98</b>	<b>126</b>	<b>105</b>	<b>74</b>	<b>102</b>	<b>113</b>	<b>108</b>	<b>103</b>	<b>94</b>	<b>128</b>	<b>84</b>	<b>108</b>	<b>110</b>	<b>1,353</b>
	County Totals	CPS	175	243	183	168	183	197	212	178	169	221	163	206	206	2,504
		CWS	58	69	70	46	62	58	81	75	52	70	45	61	54	801
		<b>Total</b>	<b>233</b>	<b>312</b>	<b>253</b>	<b>214</b>	<b>245</b>	<b>255</b>	<b>293</b>	<b>253</b>	<b>221</b>	<b>291</b>	<b>208</b>	<b>267</b>	<b>260</b>	<b>3,305</b>
BERGEN	Bergen Central	CPS	104	129	109	72	70	106	142	140	128	138	112	144	122	1,516
		CWS	42	51	31	34	33	47	45	47	48	40	44	54	37	553
		<b>Total</b>	<b>146</b>	<b>180</b>	<b>140</b>	<b>106</b>	<b>103</b>	<b>153</b>	<b>187</b>	<b>187</b>	<b>176</b>	<b>178</b>	<b>156</b>	<b>198</b>	<b>159</b>	<b>2,069</b>
	Bergen South	CPS	175	166	151	117	138	149	182	167	177	154	163	198	144	2,081
		CWS	49	79	60	61	50	60	59	64	63	62	52	62	71	792
		<b>Total</b>	<b>224</b>	<b>245</b>	<b>211</b>	<b>178</b>	<b>188</b>	<b>209</b>	<b>241</b>	<b>231</b>	<b>240</b>	<b>216</b>	<b>215</b>	<b>260</b>	<b>215</b>	<b>2,873</b>
	County Totals	CPS	279	295	260	189	208	255	324	307	305	292	275	342	266	3,597
		CWS	91	130	91	95	83	107	104	111	111	102	96	116	108	1,345
		<b>Total</b>	<b>370</b>	<b>425</b>	<b>351</b>	<b>284</b>	<b>291</b>	<b>362</b>	<b>428</b>	<b>418</b>	<b>416</b>	<b>394</b>	<b>371</b>	<b>458</b>	<b>374</b>	<b>4,942</b>
BURLINGTON	Burlington East	CPS	82	155	107	116	97	125	146	137	101	129	110	118	116	1,539
		CWS	34	61	35	32	30	39	52	43	38	39	46	35	36	520
		<b>Total</b>	<b>116</b>	<b>216</b>	<b>142</b>	<b>148</b>	<b>127</b>	<b>164</b>	<b>198</b>	<b>180</b>	<b>139</b>	<b>168</b>	<b>156</b>	<b>153</b>	<b>152</b>	<b>2,059</b>
	Burlington West	CPS	109	130	108	81	96	116	126	117	99	108	117	105	108	1,420
		CWS	37	48	33	33	33	48	47	46	56	39	34	32	52	538
		<b>Total</b>	<b>146</b>	<b>178</b>	<b>141</b>	<b>114</b>	<b>129</b>	<b>164</b>	<b>173</b>	<b>163</b>	<b>155</b>	<b>147</b>	<b>151</b>	<b>137</b>	<b>160</b>	<b>1,958</b>
	County Totals	CPS	191	285	215	197	193	241	272	254	200	237	227	223	224	2,959
		CWS	71	109	68	65	63	87	99	89	94	78	80	67	88	1,058
		<b>Total</b>	<b>262</b>	<b>394</b>	<b>283</b>	<b>262</b>	<b>256</b>	<b>328</b>	<b>371</b>	<b>343</b>	<b>294</b>	<b>315</b>	<b>307</b>	<b>290</b>	<b>312</b>	<b>4,017</b>
CAMDEN	Camden Central	CPS	119	125	136	99	117	106	148	129	122	157	108	126	111	1,603
		CWS	28	31	38	29	36	27	40	41	51	31	30	39	32	453
		<b>Total</b>	<b>147</b>	<b>156</b>	<b>174</b>	<b>128</b>	<b>153</b>	<b>133</b>	<b>188</b>	<b>170</b>	<b>173</b>	<b>188</b>	<b>138</b>	<b>165</b>	<b>143</b>	<b>2,056</b>
	Camden East	CPS	125	111	103	75	94	104	123	118	100	116	99	129	139	1,436
		CWS	32	46	32	34	28	30	49	46	27	39	37	32	30	462
		<b>Total</b>	<b>157</b>	<b>157</b>	<b>135</b>	<b>109</b>	<b>122</b>	<b>134</b>	<b>172</b>	<b>164</b>	<b>127</b>	<b>155</b>	<b>136</b>	<b>161</b>	<b>169</b>	<b>1,898</b>
	Camden North	CPS	120	155	114	88	87	112	113	109	82	118	114	105	106	1,423
		CWS	30	28	43	37	29	41	47	31	35	50	24	34	25	454
		<b>Total</b>	<b>150</b>	<b>183</b>	<b>157</b>	<b>125</b>	<b>116</b>	<b>153</b>	<b>160</b>	<b>140</b>	<b>117</b>	<b>168</b>	<b>138</b>	<b>139</b>	<b>131</b>	<b>1,877</b>
	Camden South	CPS	99	103	88	71	78	88	108	74	85	89	79	75	100	1,137
		CWS	28	30	17	14	23	22	47	28	33	34	35	19	19	349
		<b>Total</b>	<b>127</b>	<b>133</b>	<b>105</b>	<b>85</b>	<b>101</b>	<b>110</b>	<b>155</b>	<b>102</b>	<b>118</b>	<b>123</b>	<b>114</b>	<b>94</b>	<b>119</b>	<b>1,486</b>
	County Totals	CPS	463	494	441	333	376	410	492	430	389	480	400	435	456	5,599
		CWS	118	135	130	114	116	120	183	146	146	154	126	124	106	1,718
		<b>Total</b>	<b>581</b>	<b>629</b>	<b>571</b>	<b>447</b>	<b>492</b>	<b>530</b>	<b>675</b>	<b>576</b>	<b>535</b>	<b>634</b>	<b>526</b>	<b>559</b>	<b>562</b>	<b>7,317</b>
CAPE MAY	Cape May	CPS	50	100	67	64	45	58	66	61	58	64	47	46	69	795
		CWS	29	18	9	16	19	10	20	23	19	18	26	22	26	255
		<b>Total</b>	<b>79</b>	<b>118</b>	<b>76</b>	<b>80</b>	<b>64</b>	<b>68</b>	<b>86</b>	<b>84</b>	<b>77</b>	<b>82</b>	<b>73</b>	<b>68</b>	<b>95</b>	<b>1,050</b>
	County Totals	CPS	50	100	67	64	45	58	66	61	58	64	47	46	69	795
		CWS	29	18	9	16	19	10	20	23	19	18	26	22	26	255
		<b>Total</b>	<b>79</b>	<b>118</b>	<b>76</b>	<b>80</b>	<b>64</b>	<b>68</b>	<b>86</b>	<b>84</b>	<b>77</b>	<b>82</b>	<b>73</b>	<b>68</b>	<b>95</b>	<b>1,050</b>
CUMBERLAND	Cumberland East	CPS	65	70	48	50	54	72	68	48	44	62	36	55	60	732
		CWS	22	21	20	33	23	19	27	13	22	16	17	18	18	269
		<b>Total</b>	<b>87</b>	<b>91</b>	<b>68</b>	<b>83</b>	<b>77</b>	<b>91</b>	<b>95</b>	<b>61</b>	<b>66</b>	<b>78</b>	<b>53</b>	<b>73</b>	<b>78</b>	<b>1,001</b>
	Cumberland West	CPS	123	135	123	84	103	118	117	113	101	146	92	126	146	1,527
		CWS	33	34	45	36	27	40	40	39	26	26	29	24	41	440
		<b>Total</b>	<b>156</b>	<b>169</b>	<b>168</b>	<b>120</b>	<b>130</b>	<b>158</b>	<b>157</b>	<b>152</b>	<b>127</b>	<b>172</b>	<b>121</b>	<b>150</b>	<b>187</b>	<b>1,967</b>
	County Totals	CPS	188	205	171	134	157	190	185	161	145	208	128	181	206	2,259
		CWS	55	55	65	69	50	59	67	52	48	42	46	42	59	709
		<b>Total</b>	<b>243</b>	<b>260</b>	<b>236</b>	<b>203</b>	<b>207</b>	<b>249</b>	<b>252</b>	<b>213</b>	<b>193</b>	<b>250</b>	<b>174</b>	<b>223</b>	<b>265</b>	<b>2,968</b>

Data in this report is preliminary and may differ from any final report. This report is produced to ensure continuous quality improvement throughout DCF.

**Table 5: Monthly Count of CPS Reports and CWS Referrals Assigned to CP&P Local Offices**

County	Local Office	Type of Referral	Month												Total	
			Apr 2017	May 2017	Jun 2017	Jul 2017	Aug 2017	Sep 2017	Oct 2017	Nov 2017	Dec 2017	Jan 2018	Feb 2018	Mar 2018		Apr 2018
ESSEX	Essex Central	CPS	78	118	92	82	78	79	121	108	79	93	77	107	103	1,215
		CWS	32	49	42	33	23	33	40	33	28	42	22	35	36	448
		<b>Total</b>	<b>110</b>	<b>167</b>	<b>134</b>	<b>115</b>	<b>101</b>	<b>112</b>	<b>161</b>	<b>141</b>	<b>107</b>	<b>135</b>	<b>99</b>	<b>142</b>	<b>139</b>	<b>1,663</b>
	Essex North	CPS	62	87	84	50	58	70	68	67	64	80	71	75	70	906
		CWS	35	31	32	25	18	23	35	31	25	25	21	34	24	359
		<b>Total</b>	<b>97</b>	<b>118</b>	<b>116</b>	<b>75</b>	<b>76</b>	<b>93</b>	<b>103</b>	<b>98</b>	<b>89</b>	<b>105</b>	<b>92</b>	<b>109</b>	<b>94</b>	<b>1,265</b>
	Essex South	CPS	65	76	62	45	53	58	69	68	72	83	64	63	83	861
		CWS	22	32	21	12	23	19	34	20	28	18	30	21	20	300
		<b>Total</b>	<b>87</b>	<b>108</b>	<b>83</b>	<b>57</b>	<b>76</b>	<b>77</b>	<b>103</b>	<b>88</b>	<b>100</b>	<b>101</b>	<b>94</b>	<b>84</b>	<b>103</b>	<b>1,161</b>
	Newark Center City	CPS	102	121	114	71	75	89	110	98	104	107	86	105	88	1,270
		CWS	31	38	47	31	37	30	29	34	18	34	35	34	38	436
		<b>Total</b>	<b>133</b>	<b>159</b>	<b>161</b>	<b>102</b>	<b>112</b>	<b>119</b>	<b>139</b>	<b>132</b>	<b>122</b>	<b>141</b>	<b>121</b>	<b>139</b>	<b>126</b>	<b>1,706</b>
	Newark Northeast	CPS	104	108	103	83	90	94	99	106	76	107	97	97	99	1,263
		CWS	39	39	32	25	18	29	44	34	30	44	39	44	38	455
		<b>Total</b>	<b>143</b>	<b>147</b>	<b>135</b>	<b>108</b>	<b>108</b>	<b>123</b>	<b>143</b>	<b>140</b>	<b>106</b>	<b>151</b>	<b>136</b>	<b>141</b>	<b>137</b>	<b>1,718</b>
Newark South	CPS	95	128	99	78	75	80	116	93	103	116	111	116	128	1,338	
	CWS	36	51	42	26	37	38	39	29	38	38	42	47	43	506	
	<b>Total</b>	<b>131</b>	<b>179</b>	<b>141</b>	<b>104</b>	<b>112</b>	<b>118</b>	<b>155</b>	<b>122</b>	<b>141</b>	<b>154</b>	<b>153</b>	<b>163</b>	<b>171</b>	<b>1,844</b>	
County Totals	CPS	506	638	554	409	429	470	583	540	498	586	506	563	571	6,853	
	CWS	195	240	216	152	156	172	221	181	167	201	189	215	199	2,504	
	<b>Total</b>	<b>701</b>	<b>878</b>	<b>770</b>	<b>561</b>	<b>585</b>	<b>642</b>	<b>804</b>	<b>721</b>	<b>665</b>	<b>787</b>	<b>695</b>	<b>778</b>	<b>770</b>	<b>9,357</b>	
GLOUCESTER	Gloucester East	CPS	85	104	106	74	91	79	102	89	96	94	85	79	113	1,197
		CWS	27	35	31	27	25	33	28	34	30	35	22	24	41	392
		<b>Total</b>	<b>112</b>	<b>139</b>	<b>137</b>	<b>101</b>	<b>116</b>	<b>112</b>	<b>130</b>	<b>123</b>	<b>126</b>	<b>129</b>	<b>107</b>	<b>103</b>	<b>154</b>	<b>1,589</b>
	Gloucester West	CPS	103	118	104	91	85	86	123	113	100	105	93	100	96	1,317
		CWS	36	17	39	29	34	34	29	31	26	34	19	36	22	386
		<b>Total</b>	<b>139</b>	<b>135</b>	<b>143</b>	<b>120</b>	<b>119</b>	<b>120</b>	<b>152</b>	<b>144</b>	<b>126</b>	<b>139</b>	<b>112</b>	<b>136</b>	<b>118</b>	<b>1,703</b>
	County Totals	CPS	188	222	210	165	176	165	225	202	196	199	178	179	209	2,514
		CWS	63	52	70	56	59	67	57	65	56	69	41	60	63	778
		<b>Total</b>	<b>251</b>	<b>274</b>	<b>280</b>	<b>221</b>	<b>235</b>	<b>232</b>	<b>282</b>	<b>267</b>	<b>252</b>	<b>268</b>	<b>219</b>	<b>239</b>	<b>272</b>	<b>3,292</b>
HUDSON	Hudson Central	CPS	89	78	84	59	52	69	71	87	83	103	88	98	115	1,076
		CWS	26	34	32	23	26	35	34	41	38	46	37	36	36	444
		<b>Total</b>	<b>115</b>	<b>112</b>	<b>116</b>	<b>82</b>	<b>78</b>	<b>104</b>	<b>105</b>	<b>128</b>	<b>121</b>	<b>149</b>	<b>125</b>	<b>134</b>	<b>151</b>	<b>1,520</b>
	Hudson North	CPS	69	103	67	67	42	72	76	83	87	75	77	92	98	1,008
		CWS	21	38	39	19	14	31	29	33	21	29	12	32	26	344
		<b>Total</b>	<b>90</b>	<b>141</b>	<b>106</b>	<b>86</b>	<b>56</b>	<b>103</b>	<b>105</b>	<b>116</b>	<b>108</b>	<b>104</b>	<b>89</b>	<b>124</b>	<b>124</b>	<b>1,352</b>
	Hudson South	CPS	53	101	70	53	45	80	86	68	46	57	47	65	53	824
		CWS	16	45	33	16	21	27	39	17	19	26	19	24	15	317
		<b>Total</b>	<b>69</b>	<b>146</b>	<b>103</b>	<b>69</b>	<b>66</b>	<b>107</b>	<b>125</b>	<b>85</b>	<b>65</b>	<b>83</b>	<b>66</b>	<b>89</b>	<b>68</b>	<b>1,141</b>
	Hudson West	CPS	74	89	77	33	66	74	87	104	89	74	80	80	80	1,007
		CWS	31	31	32	25	24	30	30	21	35	29	26	39	31	384
		<b>Total</b>	<b>105</b>	<b>120</b>	<b>109</b>	<b>58</b>	<b>90</b>	<b>104</b>	<b>117</b>	<b>125</b>	<b>124</b>	<b>103</b>	<b>106</b>	<b>119</b>	<b>111</b>	<b>1,391</b>
County Totals	CPS	285	371	298	212	205	295	320	342	305	309	292	335	346	3,915	
	CWS	94	148	136	83	85	123	132	112	113	130	94	131	108	1,489	
	<b>Total</b>	<b>379</b>	<b>519</b>	<b>434</b>	<b>295</b>	<b>290</b>	<b>418</b>	<b>452</b>	<b>454</b>	<b>418</b>	<b>439</b>	<b>386</b>	<b>466</b>	<b>454</b>	<b>5,404</b>	
HUNTERDON	Hunterdon	CPS	27	38	31	30	32	46	40	30	44	43	36	42	47	486
		CWS	12	21	6	19	8	18	24	20	16	17	18	16	20	215
		<b>Total</b>	<b>39</b>	<b>59</b>	<b>37</b>	<b>49</b>	<b>40</b>	<b>64</b>	<b>64</b>	<b>50</b>	<b>60</b>	<b>60</b>	<b>54</b>	<b>58</b>	<b>67</b>	<b>701</b>
	County Totals	CPS	27	38	31	30	32	46	40	30	44	43	36	42	47	486
		CWS	12	21	6	19	8	18	24	20	16	17	18	16	20	215
<b>Total</b>		<b>39</b>	<b>59</b>	<b>37</b>	<b>49</b>	<b>40</b>	<b>64</b>	<b>64</b>	<b>50</b>	<b>60</b>	<b>60</b>	<b>54</b>	<b>58</b>	<b>67</b>	<b>701</b>	
MERCER	Mercer North	CPS	89	120	98	62	94	103	104	105	79	94	103	95	124	1,270
		CWS	23	47	29	35	20	49	34	38	35	46	43	42	34	475
		<b>Total</b>	<b>112</b>	<b>167</b>	<b>127</b>	<b>97</b>	<b>114</b>	<b>152</b>	<b>138</b>	<b>143</b>	<b>114</b>	<b>140</b>	<b>146</b>	<b>137</b>	<b>158</b>	<b>1,745</b>
	Mercer South	CPS	104	118	113	78	83	109	109	112	86	89	98	90	104	1,293
		CWS	35	42	32	35	25	46	35	43	32	35	18	35	33	446
		<b>Total</b>	<b>139</b>	<b>160</b>	<b>145</b>	<b>113</b>	<b>108</b>	<b>155</b>	<b>144</b>	<b>155</b>	<b>118</b>	<b>124</b>	<b>116</b>	<b>125</b>	<b>137</b>	<b>1,739</b>
	County Totals	CPS	193	238	211	140	177	212	213	217	165	183	201	185	228	2,563
CWS		58	89	61	70	45	95	69	81	67	81	61	77	67	921	
<b>Total</b>		<b>251</b>	<b>327</b>	<b>272</b>	<b>210</b>	<b>222</b>	<b>307</b>	<b>282</b>	<b>298</b>	<b>232</b>	<b>264</b>	<b>262</b>	<b>262</b>	<b>295</b>	<b>3,484</b>	



**Table 5: Monthly Count of CPS Reports and CWS Referrals Assigned to CP&P Local Offices**

County	Local Office	Type of Referral	Apr 2017	May 2017	Jun 2017	Jul 2017	Aug 2017	Sep 2017	Oct 2017	Nov 2017	Dec 2017	Jan 2018	Feb 2018	Mar 2018	Apr 2018	Total
MIDDLESEX	Middlesex Central	CPS	103	95	78	75	44	99	102	115	87	139	96	118	104	1255
		CWS	22	39	25	29	17	36	41	35	35	40	35	29	36	419
		<b>Total</b>	<b>125</b>	<b>134</b>	<b>103</b>	<b>104</b>	<b>61</b>	<b>135</b>	<b>143</b>	<b>150</b>	<b>122</b>	<b>179</b>	<b>131</b>	<b>147</b>	<b>140</b>	<b>1674</b>
	Middlesex Coastal	CPS	121	135	112	98	75	112	142	124	121	127	124	125	128	1544
		CWS	32	47	43	23	28	41	51	53	33	51	28	45	36	511
		<b>Total</b>	<b>153</b>	<b>182</b>	<b>155</b>	<b>121</b>	<b>103</b>	<b>153</b>	<b>193</b>	<b>177</b>	<b>154</b>	<b>178</b>	<b>152</b>	<b>170</b>	<b>164</b>	<b>2055</b>
	Middlesex West	CPS	119	160	111	90	62	112	141	140	106	132	134	148	128	1583
		CWS	34	54	35	35	31	20	56	58	37	51	46	33	41	531
		<b>Total</b>	<b>153</b>	<b>214</b>	<b>146</b>	<b>125</b>	<b>93</b>	<b>132</b>	<b>197</b>	<b>198</b>	<b>143</b>	<b>183</b>	<b>180</b>	<b>181</b>	<b>169</b>	<b>2114</b>
	County Totals	CPS	343	390	301	263	181	323	385	379	314	398	354	391	360	4382
		CWS	88	140	103	87	76	97	148	146	105	142	109	107	113	1461
		<b>Total</b>	<b>431</b>	<b>530</b>	<b>404</b>	<b>350</b>	<b>257</b>	<b>420</b>	<b>533</b>	<b>525</b>	<b>419</b>	<b>540</b>	<b>463</b>	<b>498</b>	<b>473</b>	<b>5843</b>
MONMOUTH	Monmouth North	CPS	149	174	145	126	103	139	173	152	125	160	167	162	149	1924
		CWS	34	64	52	30	32	38	54	54	44	61	60	58	56	637
		<b>Total</b>	<b>183</b>	<b>238</b>	<b>197</b>	<b>156</b>	<b>135</b>	<b>177</b>	<b>227</b>	<b>206</b>	<b>169</b>	<b>221</b>	<b>227</b>	<b>220</b>	<b>205</b>	<b>2561</b>
	Monmouth South	CPS	113	144	119	85	97	120	161	133	114	150	123	159	137	1655
		CWS	53	53	41	35	32	52	54	42	44	42	34	48	34	564
		<b>Total</b>	<b>166</b>	<b>197</b>	<b>160</b>	<b>120</b>	<b>129</b>	<b>172</b>	<b>215</b>	<b>175</b>	<b>158</b>	<b>192</b>	<b>157</b>	<b>207</b>	<b>171</b>	<b>2219</b>
	County Totals	CPS	262	318	264	211	200	259	334	285	239	310	290	321	286	3579
		CWS	87	117	93	65	64	90	108	96	88	103	94	106	90	1201
		<b>Total</b>	<b>349</b>	<b>435</b>	<b>357</b>	<b>276</b>	<b>264</b>	<b>349</b>	<b>442</b>	<b>381</b>	<b>327</b>	<b>413</b>	<b>384</b>	<b>427</b>	<b>376</b>	<b>4780</b>
MORRIS	Morris East	CPS	83	88	82	53	52	60	81	86	66	96	64	73	71	955
		CWS	31	28	29	21	26	35	36	38	31	40	32	34	32	413
		<b>Total</b>	<b>114</b>	<b>116</b>	<b>111</b>	<b>74</b>	<b>78</b>	<b>95</b>	<b>117</b>	<b>124</b>	<b>97</b>	<b>136</b>	<b>96</b>	<b>107</b>	<b>103</b>	<b>1368</b>
	Morris West	CPS	90	104	93	70	64	85	112	99	88	86	63	97	103	1154
		CWS	35	40	35	19	26	36	61	27	34	47	32	41	34	467
		<b>Total</b>	<b>125</b>	<b>144</b>	<b>128</b>	<b>89</b>	<b>90</b>	<b>121</b>	<b>173</b>	<b>126</b>	<b>122</b>	<b>133</b>	<b>95</b>	<b>138</b>	<b>137</b>	<b>1621</b>
	County Totals	CPS	173	192	175	123	116	145	193	185	154	182	127	170	174	2109
		CWS	66	68	64	40	52	71	97	65	65	87	64	75	66	880
		<b>Total</b>	<b>239</b>	<b>260</b>	<b>239</b>	<b>163</b>	<b>168</b>	<b>216</b>	<b>290</b>	<b>250</b>	<b>219</b>	<b>269</b>	<b>191</b>	<b>245</b>	<b>240</b>	<b>2989</b>
OCEAN	Ocean North	CPS	165	193	148	122	121	134	179	181	168	163	133	161	167	2035
		CWS	43	60	41	38	46	37	52	45	36	56	43	44	40	581
		<b>Total</b>	<b>208</b>	<b>253</b>	<b>189</b>	<b>160</b>	<b>167</b>	<b>171</b>	<b>231</b>	<b>226</b>	<b>204</b>	<b>219</b>	<b>176</b>	<b>205</b>	<b>207</b>	<b>2616</b>
	Ocean South	CPS	148	182	133	134	130	129	144	142	121	159	146	174	146	1888
		CWS	34	38	55	45	54	42	47	50	31	33	42	41	44	556
		<b>Total</b>	<b>182</b>	<b>220</b>	<b>188</b>	<b>179</b>	<b>184</b>	<b>171</b>	<b>191</b>	<b>192</b>	<b>152</b>	<b>192</b>	<b>188</b>	<b>215</b>	<b>190</b>	<b>2444</b>
	County Totals	CPS	313	375	281	256	251	263	323	323	289	322	279	335	313	3923
		CWS	77	98	96	83	100	79	99	95	67	89	85	85	84	1137
		<b>Total</b>	<b>390</b>	<b>473</b>	<b>377</b>	<b>339</b>	<b>351</b>	<b>342</b>	<b>422</b>	<b>418</b>	<b>356</b>	<b>411</b>	<b>364</b>	<b>420</b>	<b>397</b>	<b>5060</b>
PASSAIC	Passaic Central	CPS	168	197	150	117	128	172	228	199	155	173	171	171	178	2207
		CWS	63	82	52	40	40	60	90	76	78	65	75	74	62	857
		<b>Total</b>	<b>231</b>	<b>279</b>	<b>202</b>	<b>157</b>	<b>168</b>	<b>232</b>	<b>318</b>	<b>275</b>	<b>233</b>	<b>238</b>	<b>246</b>	<b>245</b>	<b>240</b>	<b>3064</b>
	Passaic North	CPS	130	194	157	119	104	130	176	158	131	134	135	166	152	1886
		CWS	51	77	65	48	47	63	82	80	57	79	75	58	56	838
		<b>Total</b>	<b>181</b>	<b>271</b>	<b>222</b>	<b>167</b>	<b>151</b>	<b>193</b>	<b>258</b>	<b>238</b>	<b>188</b>	<b>213</b>	<b>210</b>	<b>224</b>	<b>208</b>	<b>2724</b>
	County Totals	CPS	298	391	307	236	232	302	404	357	286	307	306	337	330	4093
		CWS	114	159	117	88	87	123	172	156	135	144	150	132	118	1695
		<b>Total</b>	<b>412</b>	<b>550</b>	<b>424</b>	<b>324</b>	<b>319</b>	<b>425</b>	<b>576</b>	<b>513</b>	<b>421</b>	<b>451</b>	<b>456</b>	<b>469</b>	<b>448</b>	<b>5788</b>
SALEM	Salem	CPS	72	65	68	52	45	82	67	77	58	68	56	79	77	866
		CWS	15	25	17	22	9	20	16	23	22	22	12	20	15	238
		<b>Total</b>	<b>87</b>	<b>90</b>	<b>85</b>	<b>74</b>	<b>54</b>	<b>102</b>	<b>83</b>	<b>100</b>	<b>80</b>	<b>90</b>	<b>68</b>	<b>99</b>	<b>92</b>	<b>1104</b>
	County Totals	CPS	72	65	68	52	45	82	67	77	58	68	56	79	77	866
		CWS	15	25	17	22	9	20	16	23	22	22	12	20	15	238
		<b>Total</b>	<b>87</b>	<b>90</b>	<b>85</b>	<b>74</b>	<b>54</b>	<b>102</b>	<b>83</b>	<b>100</b>	<b>80</b>	<b>90</b>	<b>68</b>	<b>99</b>	<b>92</b>	<b>1104</b>
SOMERSET	Somerset	CPS	122	135	121	74	83	97	136	130	119	119	127	115	140	1518
		CWS	31	45	30	37	34	30	30	39	53	37	30	64	34	494
		<b>Total</b>	<b>153</b>	<b>180</b>	<b>151</b>	<b>111</b>	<b>117</b>	<b>127</b>	<b>166</b>	<b>169</b>	<b>172</b>	<b>156</b>	<b>157</b>	<b>179</b>	<b>174</b>	<b>2012</b>
	County Totals	CPS	122	135	121	74	83	97	136	130	119	119	127	115	140	1518
		<b>Total</b>	<b>153</b>	<b>180</b>	<b>151</b>	<b>111</b>	<b>117</b>	<b>127</b>	<b>166</b>	<b>169</b>	<b>172</b>	<b>156</b>	<b>157</b>	<b>179</b>	<b>174</b>	<b>2012</b>

Data in this report is preliminary and may differ from any final report. This report is produced to ensure continuous quality improvement throughout DCF.

**Table 5: Monthly Count of CPS Reports and CWS Referrals Assigned to CP&P Local Offices**

County	Local Office	Type of Referral	Apr 2017	May 2017	Jun 2017	Jul 2017	Aug 2017	Sep 2017	Oct 2017	Nov 2017	Dec 2017	Jan 2018	Feb 2018	Mar 2018	Apr 2018	Total	
SUSSEX	Sussex	CPS	52	70	67	52	67	69	80	86	70	85	64	70	90	922	
		CWS	22	32	26	20	25	23	26	25	22	41	26	32	34	354	
		<b>Total</b>	<b>74</b>	<b>102</b>	<b>93</b>	<b>72</b>	<b>92</b>	<b>92</b>	<b>106</b>	<b>111</b>	<b>92</b>	<b>126</b>	<b>90</b>	<b>102</b>	<b>124</b>	<b>1276</b>	
	County Totals	CPS	52	70	67	52	67	69	80	86	70	85	64	70	90	922	
		CWS	22	32	26	20	25	23	26	25	22	41	26	32	34	354	
	<b>Total</b>	<b>74</b>	<b>102</b>	<b>93</b>	<b>72</b>	<b>92</b>	<b>92</b>	<b>106</b>	<b>111</b>	<b>92</b>	<b>126</b>	<b>90</b>	<b>102</b>	<b>124</b>	<b>1276</b>		
UNION	Union Central	CPS	80	87	84	73	72	68	74	84	91	88	89	87	88	1065	
		CWS	21	21	35	30	21	40	31	18	19	19	30	36	29	25	356
		<b>Total</b>	<b>101</b>	<b>108</b>	<b>119</b>	<b>103</b>	<b>93</b>	<b>108</b>	<b>105</b>	<b>102</b>	<b>110</b>	<b>118</b>	<b>125</b>	<b>116</b>	<b>113</b>	<b>1421</b>	
	Union East	CPS	82	97	97	55	69	91	88	91	75	102	91	98	74	1110	
		CWS	30	35	27	15	15	31	39	26	29	26	32	33	26	364	
		<b>Total</b>	<b>112</b>	<b>132</b>	<b>124</b>	<b>70</b>	<b>84</b>	<b>122</b>	<b>127</b>	<b>117</b>	<b>104</b>	<b>128</b>	<b>123</b>	<b>131</b>	<b>100</b>	<b>1474</b>	
	Union West	CPS	86	94	57	53	51	86	88	88	83	77	84	83	81	1011	
		CWS	18	41	35	29	18	29	33	36	27	38	34	22	27	387	
		<b>Total</b>	<b>104</b>	<b>135</b>	<b>92</b>	<b>82</b>	<b>69</b>	<b>115</b>	<b>121</b>	<b>124</b>	<b>110</b>	<b>115</b>	<b>118</b>	<b>105</b>	<b>108</b>	<b>1398</b>	
	County Totals	CPS	248	278	238	181	192	245	250	263	249	267	264	268	243	3186	
		CWS	69	97	97	74	54	100	103	80	75	94	102	84	78	1107	
		<b>Total</b>	<b>317</b>	<b>375</b>	<b>335</b>	<b>255</b>	<b>246</b>	<b>345</b>	<b>353</b>	<b>343</b>	<b>324</b>	<b>361</b>	<b>366</b>	<b>352</b>	<b>321</b>	<b>4293</b>	
WARREN	Warren	CPS	61	64	68	80	50	83	98	69	50	75	72	85	88	943	
		CWS	23	21	31	29	19	34	33	33	22	19	29	32	20	345	
		<b>Total</b>	<b>84</b>	<b>85</b>	<b>99</b>	<b>109</b>	<b>69</b>	<b>117</b>	<b>131</b>	<b>102</b>	<b>72</b>	<b>94</b>	<b>101</b>	<b>117</b>	<b>108</b>	<b>1288</b>	
	County Totals	CPS	61	64	68	80	50	83	98	69	50	75	72	85	88	943	
		CWS	23	21	31	29	19	34	33	33	22	19	29	32	20	345	
	<b>Total</b>	<b>84</b>	<b>85</b>	<b>99</b>	<b>109</b>	<b>69</b>	<b>117</b>	<b>131</b>	<b>102</b>	<b>72</b>	<b>94</b>	<b>101</b>	<b>117</b>	<b>108</b>	<b>1288</b>		
County CPS Referral Total		CPS	4,489	5,407	4,531	3,569	3,598	4,407	5,202	4,876	4,302	4,955	4,392	4,908	4,929	59,565	
County CWS Referral Total		CWS	1,436	1,868	1,596	1,330	1,266	1,583	1,889	1,713	1,543	1,740	1,523	1,668	1,550	20,705	
County Referral Total		<b>Total</b>	<b>5,925</b>	<b>7,275</b>	<b>6,127</b>	<b>4,899</b>	<b>4,864</b>	<b>5,990</b>	<b>7,091</b>	<b>6,589</b>	<b>5,845</b>	<b>6,695</b>	<b>5,915</b>	<b>6,576</b>	<b>6,479</b>	<b>80,270</b>	
Central Region IAIU	CPS	50	75	67	42	55	54	68	73	55	62	58	63	62	784		
	CWS	0	0	0	0	0	0	0	0	0	0	0	0	0	0		
	<b>Total</b>	<b>50</b>	<b>75</b>	<b>67</b>	<b>42</b>	<b>55</b>	<b>54</b>	<b>68</b>	<b>73</b>	<b>55</b>	<b>62</b>	<b>58</b>	<b>63</b>	<b>62</b>	<b>784</b>		
Metro Region IAIU	CPS	51	69	48	34	25	41	58	48	56	54	63	48	52	647		
	CWS	0	0	0	0	0	0	0	0	0	0	0	0	0	0		
	<b>Total</b>	<b>51</b>	<b>69</b>	<b>48</b>	<b>34</b>	<b>25</b>	<b>41</b>	<b>58</b>	<b>48</b>	<b>56</b>	<b>54</b>	<b>63</b>	<b>48</b>	<b>52</b>	<b>647</b>		
Northern Region IAIU	CPS	48	87	49	47	34	51	70	58	54	60	53	53	69	733		
	CWS	0	0	0	0	0	0	0	0	0	0	0	0	0	0		
	<b>Total</b>	<b>48</b>	<b>87</b>	<b>49</b>	<b>47</b>	<b>34</b>	<b>51</b>	<b>70</b>	<b>58</b>	<b>54</b>	<b>60</b>	<b>53</b>	<b>53</b>	<b>69</b>	<b>733</b>		
Southern Region IAIU	CPS	76	108	80	50	63	66	102	77	84	90	75	74	86	1,031		
	CWS	0	0	0	0	0	0	0	0	0	0	0	0	0	0		
	<b>Total</b>	<b>76</b>	<b>108</b>	<b>80</b>	<b>50</b>	<b>63</b>	<b>66</b>	<b>102</b>	<b>77</b>	<b>84</b>	<b>90</b>	<b>75</b>	<b>74</b>	<b>86</b>	<b>1,031</b>		
IAIU CPS Subtotal		CPS	225	339	244	173	177	212	298	256	249	266	249	238	269	3,195	
IAIU CWS Subtotal		CWS	0	0	0	0	0	0	0	0	0	0	0	0	0	0	
IAIU Subtotal		<b>Total</b>	<b>225</b>	<b>339</b>	<b>244</b>	<b>173</b>	<b>177</b>	<b>212</b>	<b>298</b>	<b>256</b>	<b>249</b>	<b>266</b>	<b>249</b>	<b>238</b>	<b>269</b>	<b>3,195</b>	
County and IAIU CPS Subtotal		CPS	4,714	5,746	4,775	3,742	3,775	4,619	5,500	5,132	4,551	5,221	4,641	5,146	5,198	62,760	
County and IAIU CWS Subtotal		CWS	1,436	1,868	1,596	1,330	1,266	1,583	1,889	1,713	1,543	1,740	1,523	1,668	1,550	20,705	
Unable to Determine <sup>(1)</sup>		<b>Total</b>	<b>127</b>	<b>152</b>	<b>146</b>	<b>129</b>	<b>163</b>	<b>158</b>	<b>187</b>	<b>129</b>	<b>98</b>	<b>94</b>	<b>407</b>	<b>122</b>	<b>125</b>	<b>2,037</b>	
Other Offices		<b>Total</b>	<b>3</b>	<b>0</b>	<b>1</b>	<b>2</b>	<b>2</b>	<b>2</b>	<b>3</b>	<b>2</b>	<b>3</b>	<b>5</b>	<b>6</b>	<b>3</b>	<b>3</b>	<b>35</b>	
Grand Total		<b>Total</b>	<b>6,280</b>	<b>7,766</b>	<b>6,518</b>	<b>5,203</b>	<b>5,206</b>	<b>6,362</b>	<b>7,579</b>	<b>6,976</b>	<b>6,195</b>	<b>7,060</b>	<b>6,577</b>	<b>6,939</b>	<b>6,876</b>	<b>85,537</b>	

<sup>(1)</sup>CPS Reports or CWS Referrals not assigned to an office through the Assignment Designee, but were assigned to an office for an assessment or investigation.