



Child Protection and Permanency

Monthly Screening and Investigation Report April 2019

Christine Norbut Beyer, MSW
Commissioner



Table of Contents

Table 1: NJ State Central Registry Activity: Monthly Child Abuse and Neglect Hotline Calls, Intakes and Assignments to Child Protection & Permanency (CP&P) Offices

Chart 1: CP&P Annual Trends in Child Protection Services (CPS) Reports and Child Welfare Services (CWS) Referrals

Table 2: Assignments to CP&P Offices: CPS Reports and CWS Referrals

Table 3: Source of CPS Reports and CWS Referrals

Table 4: Monthly Count of CPS Reports and CWS Referrals Assigned to Counties

Table 5: Monthly Count of CPS Reports and CWS Referrals Assigned to CP&P Local Offices

Table 1: NJ State Central Registry Activity: Monthly Child Abuse and Neglect Hotline Calls, Intakes and Assignments to CP&P Offices^{1,2,7}

2018 - 2019	Hotline Call Activity				Intakes Recorded in NJ SPIRIT ^{6,8}												Assignments to CP&P Offices				
	Total Calls to SCR ³	Abandon Calls ⁴	Average Time to Answer (seconds)	Resulting NJS Intakes ⁵	CPS Reports		CWS Referrals		No Action Required (NAR)		Related Information (RI)		Information & Referral (I&R)		Information Only (IO)		CPS Reports		CWS Referrals		Total
					n	%	n	%	n	%	n	%	n	%	n	%	n	%	n	%	
April 2018	14,148	727	54	15,227	5,275	34.6%	1,603	10.5%	252	1.7%	3,952	26.0%	1,818	11.9%	2,327	15.3%	5,275	76.7%	1,601	23.3%	6,876
May 2018	15,956	1,482	69	16,668	5,920	35.5%	1,833	11.0%	316	1.9%	4,104	24.6%	1,997	12.0%	2,498	15.0%	5,920	76.3%	1,836	23.7%	7,756
June 2018	13,796	1,021	72	14,490	4,948	34.1%	1,614	11.1%	264	1.8%	3,662	25.3%	1,693	11.7%	2,309	15.9%	4,948	75.4%	1,615	24.6%	6,563
July 2018	11,406	407	35	12,497	4,011	32.1%	1,307	10.5%	214	1.7%	3,387	27.1%	1,374	11.0%	2,204	17.6%	4,011	75.4%	1,308	24.6%	5,319
August 2018	11,633	460	43	12,708	4,102	32.3%	1,409	11.1%	252	2.0%	3,455	27.2%	1,307	10.3%	2,183	17.2%	4,102	74.4%	1,408	25.6%	5,510
September 2018	13,554	925	64	14,277	4,748	33.3%	1,632	11.4%	217	1.5%	3,914	27.4%	1,448	10.1%	2,318	16.2%	4,748	74.4%	1,634	25.6%	6,382
October 2018	15,489	904	68	16,470	5,790	35.2%	2,008	12.2%	260	1.6%	4,103	24.9%	1,827	11.1%	2,482	15.1%	5,790	74.2%	2,011	25.8%	7,801
November 2018	13,533	1,111	80	14,067	4,973	35.4%	1,621	11.5%	210	1.5%	3,749	26.7%	1,453	10.3%	2,061	14.7%	4,973	75.4%	1,620	24.6%	6,593
December 2018	13,020	971	78	13,683	4,891	35.7%	1,524	11.1%	174	1.3%	3,518	25.7%	1,446	10.6%	2,130	15.6%	4,891	76.2%	1,527	23.8%	6,418
January 2019	14,566	1,097	91	15,153	5,443	35.9%	1,858	12.3%	224	1.5%	3,764	24.8%	1,673	11.0%	2,191	14.5%	5,443	74.6%	1,858	25.4%	7,301
February 2019	12,995	1,095	102	13,518	4,811	35.6%	1,626	12.0%	213	1.6%	3,476	25.7%	1,506	11.1%	1,886	14.0%	4,811	74.7%	1,628	25.3%	6,439
March 2019	14,637	1,422	112	15,528	5,677	36.6%	1,826	11.8%	212	1.4%	3,825	24.6%	1,762	11.3%	2,226	14.3%	5,677	75.7%	1,824	24.3%	7,501
April 2019	14,252	1,404	113	14,540	5,313	36.5%	1,630	11.2%	253	1.7%	3,500	24.1%	1,721	11.8%	2,123	14.6%	5,313	76.5%	1,630	23.5%	6,943
	13,768	1,002	75	14,525	5,069	34.9%	1,653	11.4%	235	1.6%	3,724	25.6%	1,617	11.1%	2,226	15.3%	5,069	75.4%	1,654	24.6%	6,723
Overall Total	178,985	13,026		188,826	65,902		21,491		3,061		48,409		21,025		28,938		65,902	75.4%	21,500	24.6%	87,402

¹Comes from three distinct sources: (1) the Automatic Call Distribution (ACD) phone system; which keeps a count of the number of calls and call routing; (2) Monthly NJSpirit Intakes; which record decision making on calls received by hotline screeners, and (3) NJSpirit extracts of assigned CWS Referrals and CPS Reports.

²The number of Intakes, CPS Reports, and CWS Referrals are based on an extract from NJSpirit. Data extracted by the Office of Research, Evaluation, and Reporting on **May 8, 2019** includes all Intakes, CPS Reports, and CWS Referrals received from **April 1, 2019 through April 30, 2019**.

³The number calls received through the ACD System that were directed to a screener from any call-in phone number.

⁴The number of calls received through the ACD System that are abandoned either while waiting in queue or while ringing.

⁵The number of Intakes entered in NJSpirit from the number of calls received.

⁶The number of Intakes recorded in NJSpirit, by type of Intake. There is not a one-to-one relationship between an ACD call and an Intake; multiple calls to State Central Registry (SCR) may result in a single Intake, or one call may result in multiple Intakes.

⁷Intake: The process of documenting: a report of alleged abuse or neglect of a child (CPS); a request for services on behalf of a child, or a referral of a child for services (CWS); a call in which the caller provides additional or clarifying information about a current service case or active investigation (RI); informing a caller of, or referring a caller to, services available from other private or public sources (I&R); a call that requires no action by CP&P (NAR); or a response to a simple inquiry (IO).

CP&P Annual Trends in CPS Reports and CWS Referrals

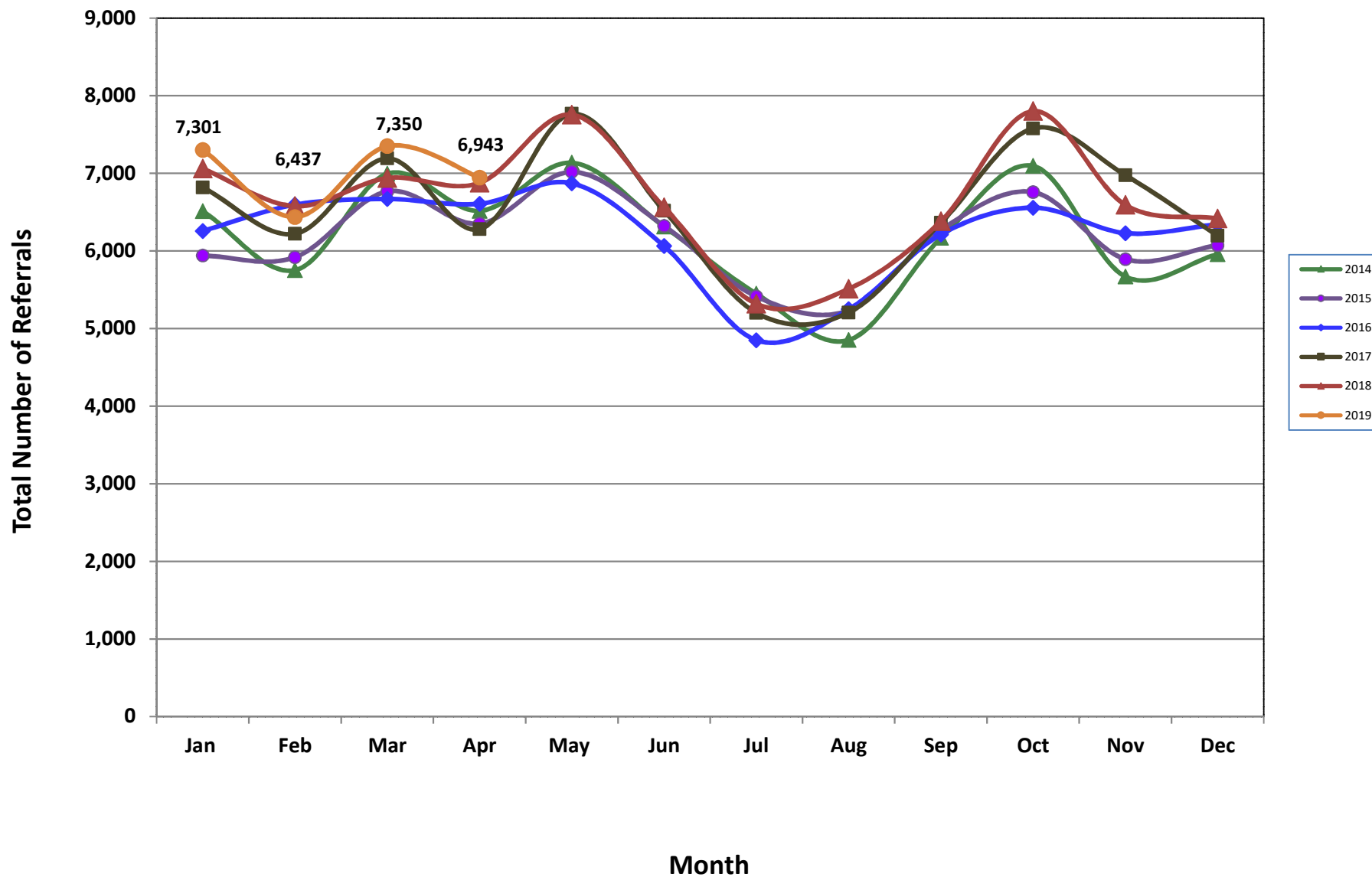


Table 2: Assignments to CP&P Offices: CPS Reports and CWS Referrals¹

Intake Date ³		CPS Reports ²	CWS Referrals ²	Total Assignments ²
2014	Jan 2014	5,097	1,416	6,513
	Feb 2014	4,457	1,295	5,752
	Mar 2014	5,408	1,586	6,994
	Apr 2014	5,049	1,467	6,516
	May 2014	5,501	1,635	7,136
	Jun 2014	4,796	1,517	6,313
	Jul 2014	4,202	1,247	5,449
	Aug 2014	3,629	1,222	4,851
	Sep 2014	4,668	1,498	6,166
	Oct 2014	5,509	1,586	7,095
	Nov 2014	4,254	1,416	5,670
	Dec 2014	4,509	1,447	5,956
	Total	57,079	17,332	74,411
2015	Jan 2015	4,549	1,391	5,940
	Feb 2015	4,574	1,345	5,919
	Mar 2015	5,187	1,580	6,767
	Apr 2015	4,967	1,384	6,351
	May 2015	5,457	1,561	7,018
	Jun 2015	4,887	1,436	6,323
	Jul 2015	4,140	1,273	5,413
	Aug 2015	3,978	1,256	5,234
	Sep 2015	4,776	1,495	6,271
	Oct 2015	5,139	1,619	6,758
	Nov 2015	4,417	1,477	5,894
	Dec 2015	4,530	1,544	6,074
	Total	56,601	17,361	73,962
	Jan 2016	4,686	1,571	6,257
	Feb 2016	4,974	1,622	6,596
	Mar 2016	5,000	1,669	6,669
	Apr 2016	5,065	1,542	6,607
	May 2016	5,238	1,633	6,871
	Jun 2016	4,602	1,461	6,063
	Jul 2016	3,663	1,187	4,850
	Aug 2016	3,941	1,307	5,248
	Sep 2016	4,654	1,559	6,213
	Oct 2016	4,935	1,622	6,557
	Nov 2016	4,677	1,552	6,229
	Dec 2016	4,762	1,580	6,342
	Total	56,197	18,305	74,502

Table 2: Assignments to CP&P Offices: CPS Reports and CWS Referrals¹

Intake Date ³		CPS Reports ²	CWS Referrals ²	Total Assignments ²
2017	Jan 2017	5,111	1,708	6,819
	Feb 2017	4,716	1,504	6,220
	Mar 2017	5,349	1,843	7,192
	Apr 2017	4,790	1,490	6,280
	May 2017	5,847	1,919	7,766
	Jun 2017	4,853	1,665	6,518
	Jul 2017	3,814	1,389	5,203
	Aug 2017	3,866	1,340	5,206
	Sep 2017	4,719	1,643	6,362
	Oct 2017	5,613	1,966	7,579
	Nov 2017	5,223	1,753	6,976
	Dec 2017	4,601	1,594	6,195
	Total	58,502	19,814	78,316
2018	Jan 2018	5,276	1,784	7,060
	Feb 2018	4,933	1,644	6,577
	Mar 2018	5,212	1,727	6,939
	Apr 2018	5,275	1,601	6,876
	May 2018	5,920	1,836	7,756
	Jun 2018	4,948	1,615	6,563
	Jul 2018	4,011	1,308	5,319
	Aug 2018	4,102	1,408	5,510
	Sep 2018	4,748	1,634	6,382
	Oct 2018	5,790	2,011	7,801
	Nov 2018	4,973	1,620	6,593
	Dec 2018	4,891	1,527	6,418
	Total	60,079	19,715	79,794
2019	Jan 2019	5,443	1,858	7,301
	Feb 2019	4,811	1,628	6,439
	Mar 2019	5,677	1,824	7,501
	Apr 2019	5,313	1,630	6,943
	Total	21,244	6,940	28,184
Grand Total		309,702	99,467	409,169

¹Source of Data: NJ SPIRIT

²A CPS Report or a CWS Referral may include multiple children in a family, with one or more allegation or request for services. In these cases, each CPS Report or CWS Referral is counted once - the CPS Report or the CWS Referral is the unit of analysis rather than the child.

³Prior to January 2014, the number of CPS Reports and CWS Referrals was based on the type of assignment of the CPS Report or CWS Referral. Beginning in January 2014, the number of CPS Reports and CWS Referrals is based on the number of CPS Reports and CWS Referrals received.

Table 3: Source of CPS Reports and CWS Referrals

CPS Reports and CWS Referrals	Source	Apr 2018	May 2018	Jun 2018	Jul 2018	Aug 2018	Sep 2018	Oct 2018	Nov 2018	Dec 2018	Jan 2019	Feb 2019	Mar 2019	Apr 2019		13 Month Total	
	School Staff	1783	2213	1243	184	118	1237	2256	1769	1643	2151	1887	2388	1732	25%	20,604	24%
	Healthcare Provider	932	994	885	904	920	928	1018	954	891	999	858	977	955	14%	12,215	14%
	Law Enforcement	1179	1264	1220	1238	1201	1251	1188	1186	1186	1131	1156	1290	1329	19%	15,819	18%
	Government Agency	417	446	441	436	468	428	521	430	387	417	345	374	392	6%	5,502	6%
	Parent	509	548	574	573	590	569	563	491	481	512	419	513	509	7%	6,851	8%
	Relative/Friend/Neighbor	475	496	517	475	488	475	452	370	393	447	359	399	456	7%	5,802	7%
	Anonymous	628	789	683	538	573	565	769	576	609	656	586	686	641	9%	8,299	9%
	CP&P	130	143	140	115	142	106	131	99	109	125	118	130	107	2%	1,595	2%
	Court/Legal	158	164	154	143	193	141	171	101	132	190	155	162	182	3%	2,046	2%
	Community Group/Individual	325	290	301	290	317	301	301	264	234	274	234	253	257	4%	3,641	4%
	Facility Staff (incl Correctional Facility)	68	97	64	101	135	103	97	86	79	88	57	85	88	1%	1,148	1%
	Child (Self)	38	34	49	38	53	35	51	30	35	23	29	25	32	0%	472	1%
	Other	217	261	272	267	289	228	262	218	226	270	219	204	245	4%	3,178	4%
Daycare/Babysitter	17	17	20	17	23	15	21	19	13	18	17	15	18	0%	230	0%	
Total	6,876	7,756	6,563	5,319	5,510	6,382	7,801	6,593	6,418	7,301	6,439	7,501	6,943		87,402		

Table 4: Monthly Count of CPS Reports and CWS Referrals Assigned to Counties

County														Average Number of Assignments Last 13 Months	Mar 19 to Apr 19 Numerical Difference
	Apr 2018	May 2018	Jun 2018	Jul 2018	Aug 2018	Sep 2018	Oct 2018	Nov 2018	Dec 2018	Jan 2019	Feb 2019	Mar 2019	Apr 2019		
Atlantic	260	326	284	213	231	295	280	264	243	285	274	296	273	271	-23
Bergen	374	474	354	291	243	333	467	412	377	460	369	460	439	389	-21
Burlington	312	302	304	284	246	270	348	313	318	338	361	337	330	313	-7
Camden	562	643	564	472	485	543	606	515	469	577	485	619	559	546	-60
Cape May	95	100	97	80	85	109	87	73	68	103	83	74	88	88	14
Cumberland	265	266	202	159	205	225	232	204	200	218	191	235	202	216	-33
Essex	770	811	713	545	622	666	859	712	694	798	723	795	740	727	-55
Gloucester	272	298	231	200	229	215	260	235	233	302	250	272	296	253	24
Hudson	454	509	412	330	342	426	540	420	425	475	410	518	457	440	-61
Hunterdon	67	62	56	48	49	57	75	58	59	48	52	71	50	58	-21
Mercer	295	330	274	223	247	231	365	298	283	298	301	331	295	290	-36
Middlesex	473	534	474	358	366	433	563	426	472	527	476	505	449	466	-56
Monmouth	376	446	341	302	277	410	426	380	352	433	333	424	359	374	-65
Morris	240	256	199	204	186	215	292	224	242	264	215	244	241	232	-3
Ocean	397	427	398	357	371	386	482	450	408	428	382	440	460	414	20
Passaic	448	571	423	307	383	421	567	461	438	482	394	527	485	454	-42
Salem	92	90	79	65	77	104	90	72	70	97	71	75	91	83	16
Somerset	174	180	189	141	128	155	200	181	165	160	158	196	158	168	-38
Sussex	124	112	118	82	82	99	120	81	97	100	122	116	94	104	-22
Union	321	379	343	260	221	328	396	351	343	401	359	405	353	343	-52
Warren	108	117	110	87	105	118	105	93	104	89	73	118	131	104	13
County Subtotals	6,479	7,233	6,165	5,008	5,180	6,039	7,360	6,223	6,060	6,883	6,082	7,058	6,550	6,332	-508
Central Region IAIU	62	89	64	40	57	39	67	63	47	61	47	61	66	59	5
Metro Region IAIU	52	78	60	40	38	50	65	61	51	55	47	62	45	54	-17
Northern Region IAIU	69	88	60	42	34	63	71	70	64	58	74	83	57	64	-26
	86	95	71	61	76	67	100	58	71	92	70	85	90	79	5
IAIU Subtotals	269	350	255	183	205	219	303	252	233	266	238	291	258	256	-33
Unable to Determine¹	125	169	137	128	122	123	135	117	121	149	119	151	132	133	-19
Other Offices	3	4	6	0	3	1	3	1	4	3	0	1	3	2	2
Grand Total	6,876	7,756	6,563	5,319	5,510	6,382	7,801	6,593	6,418	7,301	6,439	7,501	6,943	6,723	-558

¹CPS Reports or CWS Referrals not assigned to an office through the Assignment Designee, but were assigned to an office for an assessment or investigation.



Table 5: Monthly Count of CPS Reports and CWS Referrals Assigned to CP&P Local Offices

County	Local Office	Type of Referral														Total
			Apr 2018	May 2018	Jun 2018	Jul 2018	Aug 2018	Sep 2018	Oct 2018	Nov 2018	Dec 2018	Jan 2019	Feb 2019	Mar 2019	Apr 2019	
ATLANTIC	Atlantic East	CPS	118	157	132	97	106	132	132	139	107	140	128	148	123	1,659
		CWS	32	40	49	31	46	43	50	40	43	32	33	42	36	517
		Total	150	197	181	128	152	175	182	179	150	172	161	190	159	2,176
	Atlantic West	CPS	88	98	74	68	60	89	80	73	72	86	84	81	88	1,041
		CWS	22	31	29	17	19	31	18	12	21	27	29	25	26	307
		Total	110	129	103	85	79	120	98	85	93	113	113	106	114	1,348
	County Totals	CPS	206	255	206	165	166	221	212	212	179	226	212	229	211	2,700
		CWS	54	71	78	48	65	74	68	52	64	59	62	67	62	824
		Total	260	326	284	213	231	295	280	264	243	285	274	296	273	3,524
BERGEN	Bergen Central	CPS	122	141	112	76	59	88	147	103	119	137	98	129	134	1,465
		CWS	37	58	52	32	25	44	60	51	39	67	56	45	55	621
		Total	159	199	164	108	84	132	207	154	158	204	154	174	189	2,086
	Bergen South	CPS	144	199	119	136	112	152	187	188	155	173	139	207	173	2,084
		CWS	71	76	71	47	47	49	73	70	64	83	76	79	77	883
		Total	215	275	190	183	159	201	260	258	219	256	215	286	250	2,967
	County Totals	CPS	266	340	231	212	171	240	334	291	274	310	237	336	307	3,549
		CWS	108	134	123	79	72	93	133	121	103	150	132	124	132	1,504
		Total	374	474	354	291	243	333	467	412	377	460	369	460	439	5,053
BURLINGTON	Burlington East	CPS	116	104	115	117	93	93	131	124	128	132	150	128	142	1,573
		CWS	36	46	45	37	33	31	53	38	38	41	41	43	46	528
		Total	152	150	160	154	126	124	184	162	166	173	191	171	188	2,101
	Burlington West	CPS	108	120	114	100	83	113	124	121	123	123	133	122	109	1,493
		CWS	52	32	30	30	37	33	40	30	29	42	37	44	33	469
		Total	160	152	144	130	120	146	164	151	152	165	170	166	142	1,962
	County Totals	CPS	224	224	229	217	176	206	255	245	251	255	283	250	251	3,066
		CWS	88	78	75	67	70	64	93	68	67	83	78	87	79	997
		Total	312	302	304	284	246	270	348	313	318	338	361	337	330	4,063
CAMDEN	Camden Central	CPS	111	141	109	113	109	103	116	110	104	137	98	146	118	1,515
		CWS	32	47	33	27	27	36	41	27	27	31	34	34	33	429
		Total	143	188	142	140	136	139	157	137	131	168	132	180	151	1,944
	Camden East	CPS	139	127	113	99	99	106	110	103	81	95	83	123	107	1,385
		CWS	30	30	41	32	36	44	39	29	26	35	21	38	31	432
		Total	169	157	154	131	135	150	149	132	107	130	104	161	138	1,817
	Camden North	CPS	106	120	115	80	74	91	119	94	96	110	111	110	121	1,347
		CWS	25	41	44	26	33	34	42	31	19	36	42	43	30	446
		Total	131	161	159	106	107	125	161	125	115	146	153	153	151	1,793
	Camden South	CPS	100	113	86	72	85	98	108	89	91	103	73	97	95	1,210
		CWS	19	24	23	23	22	31	31	32	25	30	23	28	24	335
		Total	119	137	109	95	107	129	139	121	116	133	96	125	119	1,545
	County Totals	CPS	456	501	423	364	367	398	453	396	372	445	365	476	441	5,457
		CWS	106	142	141	108	118	145	153	119	97	132	120	143	118	1,642
		Total	562	643	564	472	485	543	606	515	469	577	485	619	559	7,099
CAPE MAY	Cape May	CPS	69	81	76	60	73	89	64	56	60	79	63	58	75	903
		CWS	26	19	21	20	12	20	23	17	8	24	20	16	13	239
		Total	95	100	97	80	85	109	87	73	68	103	83	74	88	1,142
	County Totals	CPS	69	81	76	60	73	89	64	56	60	79	63	58	75	903
		Total	95	100	97	80	85	109	87	73	68	103	83	74	88	1,142
CUMBERLAND	Cumberland East	CPS	60	56	58	47	44	60	55	47	45	43	54	68	58	695
		CWS	18	17	15	15	13	15	18	15	13	17	9	13	12	190
		Total	78	73	73	62	57	75	73	62	58	60	63	81	70	885
	Cumberland West	CPS	146	146	111	82	118	118	116	106	116	119	100	124	103	1,505
		CWS	41	47	18	15	30	32	43	36	26	39	28	30	29	414
		Total	187	193	129	97	148	150	159	142	142	158	128	154	132	1,919
	County Totals	CPS	206	202	169	129	162	178	171	153	161	162	154	192	161	2,200
		CWS	59	64	33	30	43	47	61	51	39	56	37	43	41	604
Total		265	266	202	159	205	225	232	204	200	218	191	235	202	2,804	

Data in this report is preliminary and may differ from any final report. This report is produced to ensure continuous quality improvement throughout DCF.



Table 5: Monthly Count of CPS Reports and CWS Referrals Assigned to CP&P Local Offices

County	Local Office	Type of Referral	2018													Total
			Apr 2018	May 2018	Jun 2018	Jul 2018	Aug 2018	Sep 2018	Oct 2018	Nov 2018	Dec 2018	Jan 2019	Feb 2019	Mar 2019	Apr 2019	
ESSEX	Essex Central	CPS	103	113	95	70	92	68	97	103	90	107	97	107	89	1,231
		CWS	36	39	23	21	23	41	35	35	26	37	33	42	26	417
		Total	139	152	118	91	115	109	132	138	116	144	130	149	115	1,648
	Essex North	CPS	70	83	62	41	61	65	82	74	65	72	76	73	76	900
		CWS	24	24	35	18	15	28	31	25	20	32	25	24	21	322
		Total	94	107	97	59	76	93	113	99	85	104	101	97	97	1,222
	Essex South	CPS	83	65	92	46	76	63	80	70	77	86	76	94	90	998
		CWS	20	24	25	27	17	28	44	24	20	27	46	35	39	376
		Total	103	89	117	73	93	91	124	94	97	113	122	129	129	1374
	Newark Center City	CPS	88	105	91	75	81	102	123	91	98	103	96	89	96	1238
		CWS	38	42	33	26	26	27	44	36	25	38	32	33	31	431
		Total	126	147	124	101	107	129	167	127	123	141	128	122	127	1669
	Newark Northeast	CPS	99	104	81	71	84	76	117	105	101	111	83	112	104	1248
		CWS	38	40	42	24	35	29	58	30	24	28	26	35	38	447
		Total	137	144	123	95	119	105	175	135	125	139	109	147	142	1695
Newark South	CPS	128	138	106	95	76	93	111	92	102	118	103	116	98	1376	
	CWS	43	34	28	31	36	46	37	27	46	39	30	35	32	464	
	Total	171	172	134	126	112	139	148	119	148	157	133	151	130	1840	
County Totals	CPS	571	608	527	398	470	467	610	535	533	597	531	591	553	6991	
	CWS	199	203	186	147	152	199	249	177	161	201	192	204	187	2457	
	Total	770	811	713	545	622	666	859	712	694	798	723	795	740	9448	
GLOUCESTER	Gloucester East	CPS	113	118	79	75	76	86	104	85	70	108	88	104	101	1207
		CWS	41	26	18	20	31	22	41	25	30	29	28	29	42	382
		Total	154	144	97	95	107	108	145	110	100	137	116	133	143	1589
	Gloucester West	CPS	96	118	100	82	101	79	92	95	105	130	101	112	129	1340
		CWS	22	36	34	23	21	28	23	30	28	35	33	27	24	364
		Total	118	154	134	105	122	107	115	125	133	165	134	139	153	1704
	County Totals	CPS	209	236	179	157	177	165	196	180	175	238	189	216	230	2547
CWS		63	62	52	43	52	50	64	55	58	64	61	56	66	746	
Total		272	298	231	200	229	215	260	235	233	302	250	272	296	3293	
HUDSON	Hudson Central	CPS	115	131	93	83	89	93	141	91	117	107	104	129	113	1406
		CWS	36	56	57	38	39	43	43	37	41	47	37	46	35	555
		Total	151	187	150	121	128	136	184	128	158	154	141	175	148	1961
	Hudson North	CPS	98	79	62	34	51	71	92	62	72	87	67	81	77	933
		CWS	26	38	22	19	14	26	33	28	27	40	28	28	30	359
		Total	124	117	84	53	65	97	125	90	99	127	95	109	107	1292
	Hudson South	CPS	53	47	55	38	43	41	60	48	48	55	47	66	52	653
		CWS	15	18	19	16	17	34	23	35	22	15	22	25	21	282
		Total	68	65	74	54	60	75	83	83	70	70	69	91	73	935
	Hudson West	CPS	80	102	72	72	59	84	94	87	72	87	69	93	97	1068
		CWS	31	38	32	30	30	34	54	32	26	37	36	50	32	462
		Total	111	140	104	102	89	118	148	119	98	124	105	143	129	1530
	County Totals	CPS	346	359	282	227	242	289	387	288	309	336	287	369	339	4060
		CWS	108	150	130	103	100	137	153	132	116	139	123	149	118	1658
		Total	454	509	412	330	342	426	540	420	425	475	410	518	457	5718
HUNTERDON	Hunterdon	CPS	47	44	43	37	40	40	56	44	47	33	33	52	42	558
		CWS	20	18	13	11	9	17	19	14	12	15	19	19	8	194
		Total	67	62	56	48	49	57	75	58	59	48	52	71	50	752
	County Totals	CPS	47	44	43	37	40	40	56	44	47	33	33	52	42	558
		CWS	20	18	13	11	9	17	19	14	12	15	19	19	8	194
Total	67	62	56	48	49	57	75	58	59	48	52	71	50	752		
MERCER	Mercer North	CPS	124	125	107	81	107	84	139	113	110	117	114	125	110	1456
		CWS	34	39	32	31	28	25	57	50	31	39	43	41	44	494
		Total	158	164	139	112	135	109	196	163	141	156	157	166	154	1950
	Mercer South	CPS	104	134	105	86	78	89	125	95	109	101	104	125	107	1362
		CWS	33	32	30	25	34	33	44	40	33	41	40	40	34	459
		Total	137	166	135	111	112	122	169	135	142	142	144	165	141	1821
	County Totals	CPS	228	259	212	167	185	173	264	208	219	218	218	250	217	2818
CWS		67	71	62	56	62	58	101	90	64	80	83	81	78	953	
Total		295	330	274	223	247	231	365	298	283	298	301	331	295	3771	

Data in this report is preliminary and may differ from any final report. This report is produced to ensure continuous quality improvement throughout DCF.

Table 5: Monthly Count of CPS Reports and CWS Referrals Assigned to CP&P Local Offices

County	Local Office	Type of Referral														Total	
			Apr 2018	May 2018	Jun 2018	Jul 2018	Aug 2018	Sep 2018	Oct 2018	Nov 2018	Dec 2018	Jan 2019	Feb 2019	Mar 2019	Apr 2019		
MIDDLESEX	Middlesex Central	CPS	104	118	101	78	62	75	116	93	102	125	113	126	91	1304	
		CWS	36	29	36	32	28	30	31	28	33	33	38	25	36	415	
		Total	140	147	137	110	90	105	147	121	135	158	151	151	127	1719	
	Middlesex Coastal	CPS	128	144	123	111	100	120	161	110	120	148	130	127	133	1655	
		CWS	36	52	42	24	37	39	49	39	42	49	43	46	34	532	
		Total	164	196	165	135	137	159	210	149	162	197	173	173	167	2187	
	Middlesex West	CPS	128	146	128	83	88	129	168	108	138	126	116	132	116	1606	
		CWS	41	45	44	30	51	40	38	48	37	46	36	49	39	544	
		Total	169	191	172	113	139	169	206	156	175	172	152	181	155	2150	
	County Totals	CPS	360	408	352	272	250	324	445	311	360	399	359	385	340	4565	
		CWS	113	126	122	86	116	109	118	115	112	128	117	120	109	1491	
		Total	473	534	474	358	366	433	563	426	472	527	476	505	449	6056	
MONMOUTH	Monmouth North	CPS	149	174	152	118	107	159	165	133	158	190	128	181	147	1961	
		CWS	56	61	34	36	36	61	62	42	49	64	49	57	49	656	
		Total	205	235	186	154	143	220	227	175	207	254	177	238	196	2617	
	Monmouth South	CPS	137	160	113	112	91	149	149	151	100	145	114	138	120	1679	
		CWS	34	51	42	36	43	41	50	54	45	34	42	48	43	563	
		Total	171	211	155	148	134	190	199	205	145	179	156	186	163	2242	
	County Totals	CPS	286	334	265	230	198	308	314	284	258	335	242	319	267	3640	
		CWS	90	112	76	72	79	102	112	96	94	98	91	105	92	1219	
		Total	376	446	341	302	277	410	426	380	352	433	333	424	359	4859	
	MORRIS	Morris East	CPS	71	94	66	79	74	75	100	84	91	84	75	74	94	1061
			CWS	32	29	25	24	20	24	42	19	37	49	22	21	21	365
			Total	103	123	91	103	94	99	142	103	128	133	97	95	115	1426
Morris West		CPS	103	107	77	75	74	84	118	92	89	89	82	106	84	1180	
		CWS	34	26	31	26	18	32	32	29	25	42	36	43	42	416	
		Total	137	133	108	101	92	116	150	121	114	131	118	149	126	1596	
County Totals		CPS	174	201	143	154	148	159	218	176	180	173	157	180	178	2241	
		CWS	66	55	56	50	38	56	74	48	62	91	58	64	63	781	
		Total	240	256	199	204	186	215	292	224	242	264	215	244	241	3022	
OCEAN		Ocean North	CPS	167	166	144	163	143	154	203	178	163	165	157	179	209	2191
			CWS	40	69	51	34	38	40	68	60	46	65	48	53	53	665
			Total	207	235	195	197	181	194	271	238	209	230	205	232	262	2856
	Ocean South	CPS	146	149	167	124	135	160	166	170	160	147	147	163	148	1982	
		CWS	44	43	36	36	55	32	45	42	39	51	30	45	50	548	
		Total	190	192	203	160	190	192	211	212	199	198	177	208	198	2530	
	County Totals	CPS	313	315	311	287	278	314	369	348	323	312	304	342	357	4173	
		CWS	84	112	87	70	93	72	113	102	85	116	78	98	103	1213	
		Total	397	427	398	357	371	386	482	450	408	428	382	440	460	5386	
	PASSAIC	Passaic Central	CPS	178	243	163	108	128	164	207	177	157	192	160	181	195	2253
			CWS	62	87	54	43	51	55	93	66	68	66	59	94	71	869
			Total	240	330	217	151	179	219	300	243	225	258	219	275	266	3122
Passaic North		CPS	152	185	143	104	147	128	189	158	146	148	124	181	172	1977	
		CWS	56	56	63	52	57	74	78	60	67	76	51	71	47	808	
		Total	208	241	206	156	204	202	267	218	213	224	175	252	219	2785	
County Totals		CPS	330	428	306	212	275	292	396	335	303	340	284	362	367	4230	
		CWS	118	143	117	95	108	129	171	126	135	142	110	165	118	1677	
		Total	448	571	423	307	383	421	567	461	438	482	394	527	485	5907	
SALEM		Salem	CPS	77	73	62	52	56	73	68	53	53	77	50	64	71	829
			CWS	15	17	17	13	21	31	22	19	17	20	21	11	20	244
			Total	92	90	79	65	77	104	90	72	70	97	71	75	91	1073
	County Totals	CPS	77	73	62	52	56	73	68	53	53	77	50	64	71	829	
		CWS	15	17	17	13	21	31	22	19	17	20	21	11	20	244	
		Total	92	90	79	65	77	104	90	72	70	97	71	75	91	1073	
SOMERSET	Somerset	CPS	140	136	155	106	93	125	153	137	128	122	122	161	116	1694	
		CWS	34	44	34	35	35	30	47	44	37	38	36	35	42	491	
		Total	174	180	189	141	128	155	200	181	165	160	158	196	158	2185	
	County Totals	CPS	140	136	155	106	93	125	153	137	128	122	122	161	116	1694	
		CWS	34	44	34	35	35	30	47	44	37	38	36	35	42	491	
Total	174	180	189	141	128	155	200	181	165	160	158	196	158	2185			



Table 5: Monthly Count of CPS Reports and CWS Referrals Assigned to CP&P Local Offices

County	Local Office	Type of Referral	2018												2019	Total
			Apr 2018	May 2018	Jun 2018	Jul 2018	Aug 2018	Sep 2018	Oct 2018	Nov 2018	Dec 2018	Jan 2019	Feb 2019	Mar 2019		
SUSSEX	Sussex	CPS	90	87	94	62	60	72	90	64	67	77	88	87	75	1013
		CWS	34	25	24	20	22	27	30	17	30	23	34	29	19	334
		Total	124	112	118	82	82	99	120	81	97	100	122	116	94	1347
	County Totals	CPS	90	87	94	62	60	72	90	64	67	77	88	87	75	1013
		CWS	34	25	24	20	22	27	30	17	30	23	34	29	19	334
		Total	124	112	118	82	82	99	120	81	97	100	122	116	94	1347
UNION	Union Central	CPS	88	98	78	67	54	76	98	85	81	104	87	99	100	1115
		CWS	25	28	25	23	21	25	33	26	34	43	27	32	31	373
		Total	113	126	103	90	75	101	131	111	115	147	114	131	131	1488
	Union East	CPS	74	89	92	63	48	89	103	93	94	94	104	98	94	1135
		CWS	26	27	32	24	21	34	36	29	26	35	38	45	22	395
		Total	100	116	124	87	69	123	139	122	120	129	142	143	116	1530
	Union West	CPS	81	98	91	58	54	77	84	88	83	98	79	98	76	1065
		CWS	27	39	25	25	23	27	42	30	25	27	24	33	30	377
		Total	108	137	116	83	77	104	126	118	108	125	103	131	106	1442
	County Totals	CPS	243	285	261	188	156	242	285	266	258	296	270	295	270	3315
		CWS	78	94	82	72	65	86	111	85	85	105	89	110	83	1145
		Total	321	379	343	260	221	328	396	351	343	401	359	405	353	4460
WARREN	Warren	CPS	88	93	85	59	82	86	78	71	77	61	54	88	97	1019
		CWS	20	24	25	28	23	32	27	22	27	28	19	30	34	339
		Total	108	117	110	87	105	118	105	93	104	89	73	118	131	1358
	County Totals	CPS	88	93	85	59	82	86	78	71	77	61	54	88	97	1019
		CWS	20	24	25	28	23	32	27	22	27	28	19	30	34	339
		Total	108	117	110	87	105	118	105	93	104	89	73	118	131	1358
County CPS Referral Total	CPS	4,929	5,469	4,611	3,755	3,825	4,461	5,418	4,653	4,587	5,091	4,502	5,302	4,965	61,568	
County CWS Referral Total	CWS	1,550	1,764	1,554	1,253	1,355	1,578	1,942	1,570	1,473	1,792	1,580	1,756	1,585	20,752	
County Referral Total	Total	6,479	7,233	6,165	5,008	5,180	6,039	7,360	6,223	6,060	6,883	6,082	7,058	6,550	82,320	
Central Region IAIU	CPS	62	89	64	40	57	39	67	63	47	61	47	61	66	763	
	CWS	0	0	0	0	0	0	0	0	0	0	0	0	0	0	
	Total	62	89	64	40	57	39	67	63	47	61	47	61	66	763	
Metro Region IAIU	CPS	52	78	60	40	38	50	65	61	51	55	47	62	45	704	
	CWS	0	0	0	0	0	0	0	0	0	0	0	0	0	0	
	Total	52	78	60	40	38	50	65	61	51	55	47	62	45	704	
Northern Region IAIU	CPS	69	88	60	42	34	63	71	70	64	58	74	83	57	833	
	CWS	0	0	0	0	0	0	0	0	0	0	0	0	0	0	
	Total	69	88	60	42	34	63	71	70	64	58	74	83	57	833	
Southern Region IAIU	CPS	86	95	71	61	76	67	100	58	71	92	70	85	90	1,022	
	CWS	0	0	0	0	0	0	0	0	0	0	0	0	0	0	
	Total	86	95	71	61	76	67	100	58	71	92	70	85	90	1,022	
IAIU CPS Subtotal	CPS	269	350	255	183	205	219	303	252	233	266	238	291	258	3,322	
IAIU CWS Subtotal	CWS	0	0	0	0	0	0	0	0	0	0	0	0	0	0	
IAIU Subtotal	Total	269	350	255	183	205	219	303	252	233	266	238	291	258	3,322	
County and IAIU CPS Subtotal	CPS	5,198	5,819	4,866	3,938	4,030	4,680	5,721	4,905	4,820	5,357	4,740	5,593	5,223	64,890	
County and IAIU CWS Subtotal	CWS	1,550	1,764	1,554	1,253	1,355	1,578	1,942	1,570	1,473	1,792	1,580	1,756	1,585	20,752	
Unable to Determine⁽¹⁾	Total	125	169	137	128	122	123	135	117	121	149	119	151	132	1,728	
Other Offices	Total	3	4	6	0	3	1	3	1	4	3	0	1	3	32	
Grand Total	Total	6,876	7,756	6,563	5,319	5,510	6,382	7,801	6,593	6,418	7,301	6,439	7,501	6,943	87,402	

⁽¹⁾CPS Reports or CWS Referrals not assigned to an office through the Assignment Designee, but were assigned to an office for an assessment or investigation.