



Child Protection and Permanency

Monthly Screening and Investigation Report April 2021

Christine Norbut Beyer, MSW
Commissioner



Table of Contents

Table 1: NJ State Central Registry Activity: Monthly Child Abuse and Neglect Hotline Calls, Intakes and Assignments to Child Protection & Permanency (CP&P) Offices

Chart 1: CP&P Annual Trends in Child Protection Services (CPS) Reports and Child Welfare Services (CWS) Referrals

Table 2: Assignments to CP&P Offices: CPS Reports and CWS Referrals

Table 3: Source of CPS Reports and CWS Referrals

Table 4: Monthly Count of CPS Reports and CWS Referrals Assigned to Counties

Table 5: Monthly Count of CPS Reports and CWS Referrals Assigned to CP&P Local Offices

Table 1: NJ State Central Registry Activity: Monthly Child Abuse and Neglect Hotline Calls, Intakes and Assignments to CP&P Offices^{1,2,7}

2020-2021	Hotline Call Activity				Intakes Recorded in NJ SPIRIT ^{6,8}														Assignments to CP&P Offices				
	Total Calls to SCR ³	Abandon Calls ⁴	Average Time to Answer (seconds)	Resulting NJS Intakes ⁵	CPS Reports		CWS Referrals		No Action Required (NAR)		Related Information (RI)		Information & Referral (I&R)		Information Only (IO)		Unusual Incident (UIRS)		CPS Reports		CWS Referrals		Total
					n	%	n	%	n	%	n	%	n	%	n	%	n	%	n	%	n	%	
April 2020	7,500	548	76	7,917	2,149	27.1%	407	5.1%	196	2.5%	1,852	23.4%	1,866	23.6%	1,447	18.3%	0	0.0%	2,149	84.1%	407	15.9%	2,556
May 2020	9,654	1,808	249	9,402	2,897	30.8%	537	5.7%	137	1.5%	2,342	24.9%	1,974	21.0%	1,515	16.1%	0	0.0%	2,897	84.4%	537	15.6%	3,434
June 2020	10,871	3,782	305	9,131	3,045	33.3%	636	7.0%	133	1.5%	2,281	25.0%	1,554	17.0%	1,482	16.2%	0	0.0%	3,045	82.7%	636	17.3%	3,681
July 2020	11,649	1,628	237	11,499	3,628	31.6%	738	6.4%	145	1.3%	2,892	25.2%	1,815	15.8%	2,281	19.8%	0	0.0%	3,628	83.1%	738	16.9%	4,366
August 2020	11,248	1,493	232	11,204	3,569	31.9%	821	7.3%	164	1.5%	2,993	26.7%	1,649	14.7%	2,008	17.9%	0	0.0%	3,569	81.3%	822	18.7%	4,391
September 2020	12,277	1,495	203	12,505	4,153	33.2%	1,031	8.2%	246	2.0%	3,097	24.8%	2,046	16.4%	1,932	15.4%	0	0.0%	4,153	80.1%	1,030	19.9%	5,183
October 2020	13,118	1,258	183	13,320	4,257	32.0%	867	6.5%	191	1.4%	3,220	24.2%	2,709	20.3%	2,076	15.6%	0	0.0%	4,257	83.1%	868	16.9%	5,125
November 2020	10,789	1,462	183	10,930	3,564	32.6%	670	6.1%	141	1.3%	2,608	23.9%	2,159	19.8%	1,788	16.4%	0	0.0%	3,564	84.2%	670	15.8%	4,234
December 2020	9,618	1,385	238	10,567	3,517	33.3%	681	6.4%	149	1.4%	2,345	22.2%	2,123	20.1%	1,752	16.6%	0	0.0%	3,517	83.8%	681	16.2%	4,198
January 2021	11,339	1,452	199	12,032	4,018	33.4%	794	6.6%	190	1.6%	2,818	23.4%	2,324	19.3%	1,888	15.7%	0	0.0%	4,018	83.5%	794	16.5%	4,812
February 2021	11,060	966	186	11,302	3,767	33.3%	655	5.8%	167	1.5%	2,499	22.1%	2,394	21.2%	1,820	16.1%	0	0.0%	3,767	85.2%	655	14.8%	4,422
March 2021	12,731	666	75	13,372	4,657	34.8%	829	6.2%	261	2.0%	2,868	21.4%	2,796	20.9%	1,961	14.7%	0	0.0%	4,657	84.9%	830	15.1%	5,487
April 2021	11,772	680	94	12,287	4,398	35.8%	750	6.1%	187	1.5%	2,796	22.8%	2,287	18.6%	1,869	15.2%	0	0.0%	4,398	85.4%	750	14.6%	5,148
	11,048	1,433	189	11,190	3,663	32.7%	724	6.5%	177	1.6%	2,662	23.8%	2,130	19.0%	1,832	16.4%	0	0.0%	3,663	83.5%	724	16.5%	4,387
Overall Total	143,626	18,623		145,468	47,619		9,416		2,307		34,611		27,696		23,819		0		47,619	83.5%	9,418	16.5%	57,037

¹Comes from three distinct sources: (1) the Automatic Call Distribution (ACD) phone system; which keeps a count of the number of calls and call routing; (2) Monthly NJSpirit Intakes; which record decision making on calls received by hotline screeners, and (3) NJSpirit extracts of assigned CWS Referrals and CPS Reports.

²The number of Intakes, CPS Reports, and CWS Referrals are based on an extract from NJSpirit.

Data extracted by the Office of Research, Evaluation, and Reporting on **May 10, 2021** includes all Intakes, CPS Reports, and CWS Referrals received from **April 01, 2021** through **April 30, 2021**.

³The number calls received through the ACD System that were directed to a screener from any call-in phone number.

⁴The number of calls received through the ACD System that are abandoned either while waiting in queue or while ringing.

⁵The number of Intakes entered in NJSpirit from the number of calls received.

⁶The number of Intakes recorded in NJSpirit, by type of Intake. There is not a one-to-one relationship between an ACD call and an Intake; multiple calls to State Central Registry (SCR) may result in a single Intake, or one call may result in multiple Intakes.

⁷Intake: The process of documenting: a report of alleged abuse or neglect of a child (CPS); a request for services on behalf of a child, or a referral of a child for services (CWS); a call in which the caller provides additional or clarifying information about a current service case or active investigation (RI); informing a caller of, or referring a caller to, services available from other private or public sources (I&R); a call that requires no action by CP&P (NAR); or a response to a simple inquiry (IO).

CP&P Annual Trends in CPS Reports and CWS Referrals

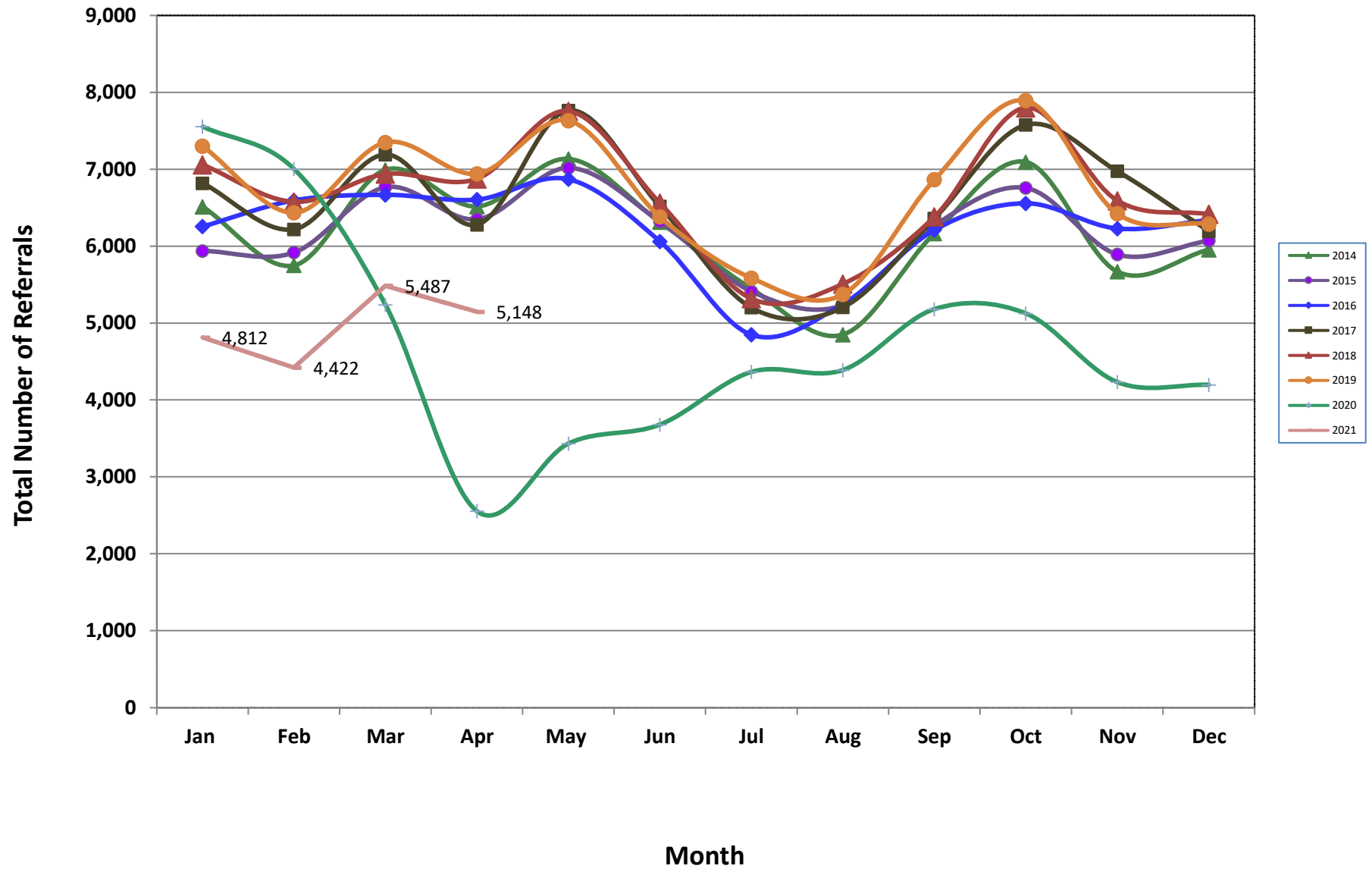


Table 2: Assignments to CP&P Offices: CPS Reports and CWS Referrals¹

Intake Date ³		CPS Reports ²	CWS Referrals ²	Total Assignments ²
2016	Jan 2016	4,686	1,571	6,257
	Feb 2016	4,974	1,622	6,596
	Mar 2016	5,000	1,669	6,669
	Apr 2016	5,065	1,542	6,607
	May 2016	5,238	1,633	6,871
	Jun 2016	4,602	1,461	6,063
	Jul 2016	3,663	1,187	4,850
	Aug 2016	3,941	1,307	5,248
	Sep 2016	4,654	1,559	6,213
	Oct 2016	4,935	1,622	6,557
	Nov 2016	4,677	1,552	6,229
	Dec 2016	4,762	1,580	6,342
	Total	56,197	18,305	74,502
2017	Jan 2017	5,111	1,708	6,819
	Feb 2017	4,716	1,504	6,220
	Mar 2017	5,349	1,843	7,192
	Apr 2017	4,790	1,490	6,280
	May 2017	5,847	1,919	7,766
	Jun 2017	4,853	1,665	6,518
	Jul 2017	3,814	1,389	5,203
	Aug 2017	3,866	1,340	5,206
	Sep 2017	4,719	1,643	6,362
	Oct 2017	5,613	1,966	7,579
	Nov 2017	5,223	1,753	6,976
	Dec 2017	4,601	1,594	6,195
	Total	58,502	19,814	78,316
2018	Jan 2018	5,276	1,784	7,060
	Feb 2018	4,933	1,644	6,577
	Mar 2018	5,212	1,727	6,939
	Apr 2018	5,275	1,601	6,876
	May 2018	5,920	1,836	7,756
	Jun 2018	4,948	1,615	6,563
	Jul 2018	4,011	1,308	5,319
	Aug 2018	4,102	1,408	5,510
	Sep 2018	4,748	1,634	6,382
	Oct 2018	5,790	2,011	7,801
	Nov 2018	4,973	1,620	6,593
	Dec 2018	4,891	1,527	6,418
	Total	60,079	19,715	79,794

Table 2: Assignments to CP&P Offices: CPS Reports and CWS Referrals¹

Intake Date ³		CPS Reports ²	CWS Referrals ²	Total Assignments ²
2019	Jan 2019	5,443	1,858	7,301
	Feb 2019	4,811	1,628	6,439
	Mar 2019	5,677	1,824	7,501
	Apr 2019	5,313	1,630	6,943
	May 2019	5,853	1,781	7,634
	Jun 2019	4,874	1,509	6,383
	Jul 2019	4,277	1,309	5,586
	Aug 2019	4,068	1,306	5,374
	Sep 2019	5,315	1,551	6,866
	Oct 2019	5,968	1,926	7,894
	Nov 2019	4,991	1,432	6,423
	Dec 2019	4,855	1,434	6,289
	Total	61,445	19,188	80,633
2020	Jan 2020	5,715	1,842	7,557
	Feb 2020	5,380	1,624	7,004
	Mar 2020	4,172	1,065	5,237
	Apr 2020	2,149	407	2,556
	May 2020	2,897	537	3,434
	Jun 2020	3,045	636	3,681
	Jul 2020	3,628	738	4,366
	Aug 2020	3,569	822	4,391
	Sep 2020	4,153	1,030	5,183
	Oct 2020	4,257	868	5,125
	Nov 2020	3,564	670	4,234
	Dec 2020	3,517	681	4,198
	Total	46,046	10,920	56,966
	2021	Jan 2021	4,018	794
Feb 2021		3,767	655	4,422
Mar 2021		4,657	830	5,487
Apr 2021		4,398	750	5,148
Total		16,840	3,029	19,869
Grand Total		299,109	90,971	390,080

Table 3: Source of CPS Reports and CWS Referrals

CPS Reports and CWS Referrals	Source	Apr 2020	May 2020	Jun 2020	Jul 2020	Aug 2020	Sep 2020	Oct 2020	Nov 2020	Dec 2020	Jan 2021	Feb 2021	Mar 2021	Apr 2021		13 Month Total	
	School Staff	143	210	119	70	63	565	809	515	523	709	664	989	759	15%	6,138	11%
	Healthcare Provider	499	656	775	784	819	882	869	817	760	835	815	930	897	17%	10,338	18%
	Law Enforcement	792	1,086	1,140	1,440	1,372	1,400	1,303	1,147	1,092	1,226	1,122	1,311	1,329	26%	15,760	28%
	Government Agency	134	198	238	274	304	295	278	180	233	280	261	323	309	6%	3,307	6%
	Parent	219	281	326	400	395	431	351	330	355	374	302	392	409	8%	4,565	8%
	Relative/Friend/Neighbor	232	296	326	392	343	424	337	294	286	336	284	332	338	7%	4,220	7%
	Anonymous	222	284	294	416	425	502	525	386	400	442	415	499	450	9%	5,260	9%
	CP&P	28	31	42	47	104	95	98	72	82	62	61	96	89	2%	907	2%
	Court/Legal	40	59	50	80	81	99	86	77	81	99	91	127	102	2%	1,072	2%
	Community Group/Individual	111	143	157	193	171	177	163	141	132	168	152	182	159	3%	2,049	4%
	Facility Staff (incl Correctional Facility)	21	41	43	63	61	72	68	53	60	56	48	52	64	1%	702	1%
	Child (Self)	7	17	17	25	29	31	29	34	31	29	27	35	37	1%	348	1%
	Other	105	130	149	175	219	204	198	177	150	187	171	204	197	4%	2,266	4%
Daycare/Babysitter	3	2	5	7	5	6	11	11	13	9	9	15	9	0%	105	0%	
Total	2,556	3,434	3,681	4,366	4,391	5,183	5,125	4,234	4,198	4,812	4,422	5,487	5,148		57,037		

Table 4: Monthly Count of CPS Reports and CWS Referrals Assigned to Counties

County														Average Number of Assignments Last 13 Months	Mar 21 to Apr 21 Numerical Difference
	Apr 2020	May 2020	Jun 2020	Jul 2020	Aug 2020	Sep 2020	Oct 2020	Nov 2020	Dec 2020	Jan 2021	Feb 2021	Mar 2021	Apr 2021		
Atlantic	121	161	180	214	195	243	256	181	199	205	185	237	224	200	-13
Bergen	145	189	194	232	233	300	319	255	245	276	289	323	314	255	-9
Burlington	133	181	185	231	237	271	278	224	224	230	232	297	269	230	-28
Camden	216	305	325	362	345	433	443	337	356	420	432	497	459	379	-38
Cape May	33	50	66	72	65	87	61	72	61	70	73	87	68	67	-19
Cumberland	96	116	130	145	131	165	167	147	147	141	154	203	190	149	-13
Essex	249	364	366	440	486	538	500	419	416	458	452	530	441	435	-89
Gloucester	111	160	177	198	192	232	214	186	202	197	176	239	237	194	-2
Hudson	137	226	199	282	268	274	325	234	296	301	243	305	313	262	8
Hunterdon	22	30	24	33	40	42	38	36	29	46	42	41	47	36	6
Mercer	106	144	164	197	187	234	207	193	194	201	184	221	213	188	-8
Middlesex	205	231	283	310	321	344	356	286	303	356	295	382	364	310	-18
Monmouth	166	196	233	263	267	302	311	254	237	304	289	304	294	263	-10
Morris	85	124	137	152	150	202	198	164	148	182	139	198	168	157	-30
Ocean	177	257	264	336	278	349	319	294	290	321	291	394	389	305	-5
Passaic	143	213	219	267	250	321	312	255	225	328	243	310	326	262	16
Salem	35	44	53	56	48	56	68	67	53	71	64	83	76	60	-7
Somerset	66	92	82	114	101	155	130	123	106	114	120	130	139	113	9
Sussex	47	48	51	86	73	92	101	74	46	63	73	103	95	73	-8
Union	137	147	190	181	225	261	253	189	210	256	218	271	260	215	-11
Warren	54	50	56	75	77	86	98	67	66	93	70	102	73	74	-29
County Subtotals	2,484	3,328	3,578	4,246	4,169	4,987	4,954	4,057	4,053	4,633	4,264	5,257	4,959	4,228	-298
Central Region IAIU	10	6	23	17	17	26	23	23	13	28	20	30	20	20	-10
Metro Region IAIU	3	11	2	13	13	8	14	16	11	12	11	22	14	12	-8
Northern Region IAIU	6	12	10	14	12	11	10	11	8	18	14	23	20	13	-3
Southern Region IAIU	12	18	20	23	30	25	28	23	26	33	34	46	35	27	-11
IAIU Subtotals	31	47	55	67	72	70	75	73	58	91	79	121	89	71	-32
¹ Unable to Determine	39	59	48	51	149	126	93	103	85	85	79	108	98	86	-10
Other Offices	2	0	0	2	1	0	3	1	2	3	0	1	2	1	1
Grand Total	2,556	3,434	3,681	4,366	4,391	5,183	5,125	4,234	4,198	4,812	4,422	5,487	5,148	4,387	-339

¹CPS Reports or CWS Referrals not assigned to an office through the Assignment Designee, but were assigned to an office for an assessment or investigation.



Table 5: Monthly Count of CPS Reports and CWS Referrals Assigned to CP&P Local Offices

County	Local Office	Type of Referral														Total
			Apr 2020	May 2020	Jun 2020	Jul 2020	Aug 2020	Sep 2020	Oct 2020	Nov 2020	Dec 2020	Jan 2021	Feb 2021	Mar 2021	Apr 2021	
ATLANTIC	Atlantic East	CPS	55	70	82	96	100	109	110	76	87	95	98	105	105	1,188
		CWS	9	16	25	24	22	32	17	13	16	17	14	15	21	241
		Total	64	86	107	120	122	141	127	89	103	112	112	120	126	1,429
	Atlantic West	CPS	50	64	57	75	64	88	107	79	82	76	63	100	87	992
		CWS	7	11	16	19	9	14	22	13	14	17	10	17	11	180
		Total	57	75	73	94	73	102	129	92	96	93	73	117	98	1,172
	County Totals	CPS	105	134	139	171	164	197	217	155	169	171	161	205	192	2,180
		CWS	16	27	41	43	31	46	39	26	30	34	24	32	32	421
		Total	121	161	180	214	195	243	256	181	199	205	185	237	224	2,601
BERGEN	Bergen Central	CPS	55	66	66	85	85	89	105	70	80	101	96	123	111	1,132
		CWS	12	13	21	14	12	31	33	19	15	23	25	18	17	253
		Total	67	79	87	99	97	120	138	89	95	124	121	141	128	1,385
	Bergen South	CPS	67	90	92	104	118	144	156	138	119	127	140	157	161	1,613
		CWS	11	20	15	29	18	36	25	28	31	25	28	25	25	316
		Total	78	110	107	133	136	180	181	166	150	152	168	182	186	1,929
	County Totals	CPS	122	156	158	189	203	233	261	208	199	228	236	280	272	2,745
		CWS	23	33	36	43	30	67	58	47	46	48	53	43	42	569
		Total	145	189	194	232	233	300	319	255	245	276	289	323	314	3,314
BURLINGTON	Burlington East	CPS	55	74	95	80	101	100	126	95	104	92	111	133	121	1,287
		CWS	12	17	11	29	17	30	19	16	13	21	19	18	27	249
		Total	67	91	106	109	118	130	145	111	117	113	130	151	148	1,536
	Burlington West	CPS	51	76	68	99	95	117	108	93	87	89	87	122	98	1,190
		CWS	15	14	11	23	24	24	25	20	20	28	15	24	23	266
		Total	66	90	79	122	119	141	133	113	107	117	102	146	121	1,456
	County Totals	CPS	106	150	163	179	196	217	234	188	191	181	198	255	219	2,477
		CWS	27	31	22	52	41	54	44	36	33	49	34	42	50	515
		Total	133	181	185	231	237	271	278	224	224	230	232	297	269	2,992
CAMDEN	Camden Central	CPS	40	68	86	74	69	87	99	79	79	100	85	115	91	1,072
		CWS	12	11	15	21	18	20	18	14	17	20	17	22	12	217
		Total	52	79	101	95	87	107	117	93	96	120	102	137	103	1,289
	Camden East	CPS	45	54	59	67	78	98	101	64	79	93	88	118	112	1,056
		CWS	7	8	14	18	15	19	13	13	15	13	20	16	18	189
		Total	52	62	73	85	93	117	114	77	94	106	108	134	130	1,245
	Camden North	CPS	39	56	71	81	63	85	86	62	59	81	107	85	93	968
		CWS	9	15	12	13	18	20	19	19	12	17	15	13	15	197
		Total	48	71	83	94	81	105	105	81	71	98	122	98	108	1,165
	Camden South	CPS	54	73	59	71	67	84	96	75	78	77	93	108	102	1,037
		CWS	10	20	9	17	17	20	11	11	17	19	7	20	16	194
		Total	64	93	68	88	84	104	107	86	95	96	100	128	118	1,231
	County Totals	CPS	178	251	275	293	277	354	382	280	295	351	373	426	398	4,133
		CWS	38	54	50	69	68	79	61	57	61	69	59	71	61	797
		Total	216	305	325	362	345	433	443	337	356	420	432	497	459	4,930
CAPE MAY	Cape May	CPS	29	37	55	58	52	75	52	60	52	59	59	77	60	725
		CWS	4	13	11	14	13	12	9	12	9	11	14	10	8	140
		Total	33	50	66	72	65	87	61	72	61	70	73	87	68	865
	County Totals	CPS	29	37	55	58	52	75	52	60	52	59	59	77	60	725
		Total	33	50	66	72	65	87	61	72	61	70	73	87	68	865
CUMBERLAND	Cumberland East	CPS	24	40	44	37	43	49	61	46	41	45	41	75	55	601
		CWS	10	8	6	6	6	6	12	8	5	17	7	11	11	113
		Total	34	48	50	43	49	55	73	54	46	62	48	86	66	714
	Cumberland West	CPS	53	56	66	91	70	89	77	76	78	68	91	101	110	1,026
		CWS	9	12	14	11	12	21	17	17	23	11	15	16	14	192
		Total	62	68	80	102	82	110	94	93	101	79	106	117	124	1,218
	County Totals	CPS	77	96	110	128	113	138	138	122	119	113	132	176	165	1,627
		Total	96	116	130	145	131	165	167	147	147	141	154	203	190	1,932

Data in this report is preliminary and may differ from any final report. This report is produced to ensure continuous quality improvement throughout DCF.



Table 5: Monthly Count of CPS Reports and CWS Referrals Assigned to CP&P Local Offices

County	Local Office	Type of Referral															Total
			Apr 2020	May 2020	Jun 2020	Jul 2020	Aug 2020	Sep 2020	Oct 2020	Nov 2020	Dec 2020	Jan 2021	Feb 2021	Mar 2021	Apr 2021		
ESSEX	Essex Central	CPS	58	60	58	61	67	69	76	59	66	81	80	68	63	866	
		CWS	6	8	8	20	17	17	15	14	10	24	13	11	14	177	
		Total	64	68	66	81	84	86	91	73	76	105	93	79	77	1,043	
	Essex North	CPS	24	28	39	47	42	45	50	48	44	38	58	81	66	610	
		CWS	2	18	8	9	9	21	16	3	13	8	12	20	15	154	
		Total	26	46	47	56	51	66	66	51	57	46	70	101	81	764	
	Essex South	CPS	22	32	46	40	54	53	48	42	38	57	71	70	64	637	
		CWS	7	7	10	11	16	14	12	8	10	14	13	23	13	158	
		Total	29	39	56	51	70	67	60	50	48	71	84	93	77	795	
	Newark Center City	CPS	33	59	53	73	69	99	76	75	73	61	70	63	77	881	
		CWS	8	12	6	16	12	18	10	12	8	10	5	15	9	141	
		Total	41	71	59	89	81	117	86	87	81	71	75	78	86	1022	
	Newark Northeast	CPS	38	47	55	58	62	72	72	47	50	62	54	66	54	737	
		CWS	7	5	17	15	17	17	22	13	14	13	9	13	11	173	
		Total	45	52	72	73	79	89	94	60	64	75	63	79	65	910	
Newark South	CPS	38	69	50	72	93	91	84	83	76	74	56	82	45	913		
	CWS	6	19	16	18	28	22	19	15	14	16	11	18	10	212		
	Total	44	88	66	90	121	113	103	98	90	90	67	100	55	1125		
County Totals	CPS	213	295	301	351	387	429	406	354	347	373	389	430	369	4644		
	CWS	36	69	65	89	99	109	94	65	69	85	63	100	72	1015		
	Total	249	364	366	440	486	538	500	419	416	458	452	530	441	5659		
GLOUCESTER	Gloucester East	CPS	47	67	71	79	75	83	73	79	83	65	62	93	91	968	
		CWS	9	7	14	15	15	14	14	11	6	18	13	19	17	172	
		Total	56	74	85	94	90	97	87	90	89	83	75	112	108	1140	
	Gloucester West	CPS	45	76	75	87	88	112	108	82	95	98	89	116	114	1185	
		CWS	10	10	17	17	14	23	19	14	18	16	12	11	15	196	
		Total	55	86	92	104	102	135	127	96	113	114	101	127	129	1381	
	County Totals	CPS	92	143	146	166	163	195	181	161	178	163	151	209	205	2153	
		CWS	19	17	31	32	29	37	33	25	24	34	25	30	32	368	
		Total	111	160	177	198	192	232	214	186	202	197	176	239	237	2521	
HUDSON	Hudson Central	CPS	37	69	62	81	74	75	90	71	98	84	68	98	78	985	
		CWS	12	12	19	21	19	21	32	15	18	25	6	32	16	248	
		Total	49	81	81	102	93	96	122	86	116	109	74	130	94	1233	
	Hudson North	CPS	23	42	34	56	46	53	45	45	47	58	55	55	59	618	
		CWS	10	13	12	14	15	16	14	9	10	13	15	11	14	166	
		Total	33	55	46	70	61	69	59	54	57	71	70	66	73	784	
	Hudson South	CPS	11	31	23	36	40	31	48	21	29	35	25	34	50	414	
		CWS	5	8	7	10	7	7	6	12	8	10	7	9	14	110	
		Total	16	39	30	46	47	38	54	33	37	45	32	43	64	524	
	Hudson West	CPS	34	45	35	47	55	58	65	53	69	65	55	58	69	708	
		CWS	5	6	7	17	12	13	25	8	17	11	12	8	13	154	
		Total	39	51	42	64	67	71	90	61	86	76	67	66	82	862	
	County Totals	CPS	105	187	154	220	215	217	248	190	243	242	203	245	256	2725	
		CWS	32	39	45	62	53	57	77	44	53	59	40	60	57	678	
		Total	137	226	199	282	268	274	325	234	296	301	243	305	313	3403	
HUNTERDON	Hunterdon	CPS	20	27	20	29	34	31	31	28	23	38	38	34	38	391	
		CWS	2	3	4	4	6	11	7	8	6	8	4	7	9	79	
		Total	22	30	24	33	40	42	38	36	29	46	42	41	47	470	
	County Totals	CPS	20	27	20	29	34	31	31	28	23	38	38	34	38	391	
		CWS	2	3	4	4	6	11	7	8	6	8	4	7	9	79	
Total	22	30	24	33	40	42	38	36	29	46	42	41	47	470			
MERCER	Mercer North	CPS	45	50	76	87	78	101	78	83	86	91	81	93	108	1057	
		CWS	14	16	11	16	15	17	20	21	16	13	11	9	8	187	
		Total	59	66	87	103	93	118	98	104	102	104	92	102	116	1244	
	Mercer South	CPS	36	65	65	81	78	92	94	75	74	71	72	99	81	983	
		CWS	11	13	12	13	16	24	15	14	18	26	20	20	16	218	
		Total	47	78	77	94	94	116	109	89	92	97	92	119	97	1201	
	County Totals	CPS	81	115	141	168	156	193	172	158	160	162	153	192	189	2040	
CWS		25	29	23	29	31	41	35	35	34	39	31	29	24	405		
Total	106	144	164	197	187	234	207	193	194	201	184	221	213	2445			

Data in this report is preliminary and may differ from any final report. This report is produced to ensure continuous quality improvement throughout DCF.



Table 5: Monthly Count of CPS Reports and CWS Referrals Assigned to CP&P Local Offices

County	Local Office	Type of Referral														Total
			Apr 2020	May 2020	Jun 2020	Jul 2020	Aug 2020	Sep 2020	Oct 2020	Nov 2020	Dec 2020	Jan 2021	Feb 2021	Mar 2021	Apr 2021	
MIDDLESEX	Middlesex Central	CPS	64	62	68	67	66	73	87	65	71	104	73	98	110	1008
		CWS	10	6	10	11	12	19	18	11	19	14	17	13	20	180
		Total	74	68	78	78	78	92	105	76	90	118	90	111	130	1188
	Middlesex Coastal	CPS	54	69	95	109	116	105	120	91	89	95	84	121	96	1244
		CWS	14	12	15	17	20	16	15	13	11	18	13	21	16	201
		Total	68	81	110	126	136	121	135	104	100	113	97	142	112	1445
	Middlesex West	CPS	58	75	79	84	88	102	96	90	93	106	91	107	104	1173
		CWS	5	7	16	22	19	29	20	16	20	19	17	22	18	230
		Total	63	82	95	106	107	131	116	106	113	125	108	129	122	1403
	County Totals	CPS	176	206	242	260	270	280	303	246	253	305	248	326	310	3425
		CWS	29	25	41	50	51	64	53	40	50	51	47	56	54	611
		Total	205	231	283	310	321	344	356	286	303	356	295	382	364	4036
MONMOUTH	Monmouth North	CPS	84	98	106	123	118	128	149	127	102	139	149	154	135	1612
		CWS	10	18	22	26	27	33	23	15	20	24	21	22	15	276
		Total	94	116	128	149	145	161	172	142	122	163	170	176	150	1888
	Monmouth South	CPS	58	71	89	99	100	118	116	91	94	124	102	114	131	1307
		CWS	14	9	16	15	22	23	23	21	21	17	17	14	13	225
		Total	72	80	105	114	122	141	139	112	115	141	119	128	144	1532
	County Totals	CPS	142	169	195	222	218	246	265	218	196	263	251	268	266	2919
		CWS	24	27	38	41	49	56	46	36	41	41	38	36	28	501
		Total	166	196	233	263	267	302	311	254	237	304	289	304	294	3420
MORRIS	Morris East	CPS	35	70	48	53	64	77	89	68	64	74	58	82	62	844
		CWS	8	15	16	13	12	24	9	8	10	8	9	14	14	160
		Total	43	85	64	66	76	101	98	76	74	82	67	96	76	1004
	Morris West	CPS	39	34	58	75	53	87	80	75	66	90	65	89	78	889
		CWS	3	5	15	11	21	14	20	13	8	10	7	13	14	154
		Total	42	39	73	86	74	101	100	88	74	100	72	102	92	1043
	County Totals	CPS	74	104	106	128	117	164	169	143	130	164	123	171	140	1733
		CWS	11	20	31	24	33	38	29	21	18	18	16	27	28	314
		Total	85	124	137	152	150	202	198	164	148	182	139	198	168	2047
OCEAN	Ocean North	CPS	81	133	121	147	121	147	150	126	129	166	139	167	171	1798
		CWS	8	17	18	24	20	36	22	20	32	17	20	34	31	299
		Total	89	150	139	171	141	183	172	146	161	183	159	201	202	2097
	Ocean South	CPS	73	95	113	142	112	132	130	124	110	119	109	176	161	1596
		CWS	15	12	12	23	25	34	17	24	19	19	23	17	26	266
		Total	88	107	125	165	137	166	147	148	129	138	132	193	187	1862
	County Totals	CPS	154	228	234	289	233	279	280	250	239	285	248	343	332	3394
		CWS	23	29	30	47	45	70	39	44	51	36	43	51	57	565
		Total	177	257	264	336	278	349	319	294	290	321	291	394	389	3959
PASSAIC	Passaic Central	CPS	55	87	102	102	86	124	134	118	92	134	102	134	135	1405
		CWS	17	24	25	18	22	30	28	12	13	33	21	26	15	284
		Total	72	111	127	120	108	154	162	130	105	167	123	160	150	1689
	Passaic North	CPS	60	84	70	123	108	137	123	107	104	134	102	124	150	1426
		CWS	11	18	22	24	34	30	27	18	16	27	18	26	26	297
		Total	71	102	92	147	142	167	150	125	120	161	120	150	176	1723
	County Totals	CPS	115	171	172	225	194	261	257	225	196	268	204	258	285	2831
		CWS	28	42	47	42	56	60	55	30	29	60	39	52	41	581
		Total	143	213	219	267	250	321	312	255	225	328	243	310	326	3412
SALEM	Salem	CPS	31	37	40	45	39	44	56	60	48	62	56	72	67	657
		CWS	4	7	13	11	9	12	12	7	5	9	8	11	9	117
		Total	35	44	53	56	48	56	68	67	53	71	64	83	76	774
	County Totals	CPS	31	37	40	45	39	44	56	60	48	62	56	72	67	657
		CWS	4	7	13	11	9	12	12	7	5	9	8	11	9	117
		Total	35	44	53	56	48	56	68	67	53	71	64	83	76	774
SOMERSET	Somerset	CPS	57	78	69	98	84	117	116	109	94	101	104	119	127	1273
		CWS	9	14	13	16	17	38	14	14	12	13	16	11	12	199
		Total	66	92	82	114	101	155	130	123	106	114	120	130	139	1472
	County Totals	CPS	57	78	69	98	84	117	116	109	94	101	104	119	127	1273
		Total	66	92	82	114	101	155	130	123	106	114	120	130	139	1472

Data in this report is preliminary and may differ from any final report. This report is produced to ensure continuous quality improvement throughout DCF.



Table 5: Monthly Count of CPS Reports and CWS Referrals Assigned to CP&P Local Offices

County	Local Office	Type of Referral														Total	
			Apr 2020	May 2020	Jun 2020	Jul 2020	Aug 2020	Sep 2020	Oct 2020	Nov 2020	Dec 2020	Jan 2021	Feb 2021	Mar 2021	Apr 2021		
SUSSEX	Sussex	CPS	41	38	45	75	59	70	76	64	41	54	66	93	86	808	
		CWS	6	10	6	11	14	22	25	10	5	9	7	10	9	144	
		Total	47	48	51	86	73	92	101	74	46	63	73	103	95	952	
	County Totals	CPS	41	38	45	75	59	70	76	64	41	54	66	93	86	808	
		CWS	6	10	6	11	14	22	25	10	5	9	7	10	9	144	
UNION	Union Central	CPS	37	44	41	56	56	66	72	48	67	63	57	68	67	742	
		CWS	8	6	10	8	11	13	14	11	7	15	10	25	14	152	
		Total	45	50	51	64	67	79	86	59	74	78	67	93	81	894	
	Union East	CPS	35	44	50	46	84	66	52	51	57	72	73	66	61	757	
		CWS	5	4	15	7	16	16	19	10	10	19	5	15	15	156	
		Total	40	48	65	53	100	82	71	61	67	91	78	81	76	913	
	Union West	CPS	46	44	52	54	52	75	80	58	58	69	65	79	80	812	
		CWS	6	5	22	10	6	25	16	11	11	18	8	18	23	179	
		Total	52	49	74	64	58	100	96	69	69	87	73	97	103	991	
	County Totals	CPS	118	132	143	156	192	207	204	157	182	204	195	213	208	2311	
		CWS	19	15	47	25	33	54	49	32	28	52	23	58	52	487	
		Total	137	147	190	181	225	261	253	189	210	256	218	271	260	2798	
	WARREN	Warren	CPS	46	43	40	64	66	70	85	59	57	84	57	83	64	818
			CWS	8	7	16	11	11	16	13	8	9	9	13	19	9	149
			Total	54	50	56	75	77	86	98	67	66	93	70	102	73	967
County Totals		CPS	46	43	40	64	66	70	85	59	57	84	57	83	64	818	
		CWS	8	7	16	11	11	16	13	8	9	9	13	19	9	149	
Total	54	50	56	75	77	86	98	67	66	93	70	102	73	967			
County CPS Referral Total		CPS	2,082	2,797	2,948	3,514	3,432	4,017	4,133	3,435	3,412	3,871	3,645	4,475	4,248	46,009	
County CWS Referral Total		CWS	402	531	630	732	737	970	821	622	641	762	619	782	711	8,960	
County Referral Total		Total	2,484	3,328	3,578	4,246	4,169	4,987	4,954	4,057	4,053	4,633	4,264	5,257	4,959	54,969	
Central Region IAIU	CPS	10	6	23	17	17	26	23	23	13	28	20	30	20	256		
	CWS	0	0	0	0	0	0	0	0	0	0	0	0	0	0		
	Total	10	6	23	17	17	26	23	23	13	28	20	30	20	256		
Metro Region IAIU	CPS	3	11	2	13	13	8	14	16	11	12	11	22	14	150		
	CWS	0	0	0	0	0	0	0	0	0	0	0	0	0	0		
	Total	3	11	2	13	13	8	14	16	11	12	11	22	14	150		
Northern Region IAIU	CPS	6	12	10	14	12	11	10	11	8	18	14	22	20	168		
	CWS	0	0	0	0	0	0	0	0	0	0	0	1	0	1		
	Total	6	12	10	14	12	11	10	11	8	18	14	23	20	169		
Southern Region IAIU	CPS	12	18	20	23	30	25	28	23	26	33	34	46	35	353		
	CWS	0	0	0	0	0	0	0	0	0	0	0	0	0	0		
	Total	12	18	20	23	30	25	28	23	26	33	34	46	35	353		
IAIU CPS Subtotal		CPS	31	47	55	67	72	70	75	73	58	91	79	120	89	927	
IAIU CWS Subtotal		CWS	0	0	0	0	0	0	0	0	0	0	1	0	1		
IAIU Subtotal		Total	31	47	55	67	72	70	75	73	58	91	79	121	89	928	
County and IAIU CPS Subtotal		CPS	2,113	2,844	3,003	3,581	3,504	4,087	4,208	3,508	3,470	3,962	3,724	4,595	4,337	46,936	
County and IAIU CWS Subtotal		CWS	402	531	630	732	737	970	821	622	641	762	619	783	711	8,961	
Unable to Determine⁽¹⁾		Total	39	59	48	51	149	126	93	103	85	85	79	108	98	1,123	
Other Offices		Total	2	0	0	2	1	0	3	1	2	3	0	1	2	17	
Grand Total		Total	2,556	3,434	3,681	4,366	4,391	5,183	5,125	4,234	4,198	4,812	4,422	5,487	5,148	57,037	

⁽¹⁾CPS Reports or CWS Referrals not assigned to an office through the Assignment Designee, but were assigned to an office for an assessment or investigation.