



Child Protection and Permanency

Monthly Screening and Investigation Report April 2023

Christine Norbut Beyer, MSW
Commissioner



Table of Contents

Table 1: NJ State Central Registry Activity: Monthly Child Abuse and Neglect Hotline Calls, Intakes and Assignments to Child Protection & Permanency (CP&P) Offices

Chart 1: CP&P Annual Trends in Child Protection Services (CPS) Reports and Child Welfare Services (CWS) Referrals

Table 2: Assignments to CP&P Offices: CPS Reports and CWS Referrals

Table 3: Source of CPS Reports and CWS Referrals

Table 4: Monthly Count of CPS Reports and CWS Referrals Assigned to Counties

Table 5: Monthly Count of CPS Reports and CWS Referrals Assigned to CP&P Local Offices

Table 1: NJ State Central Registry Activity: Monthly Child Abuse and Neglect Hotline Calls, Intakes and Assignments to CP&P Offices^{1,2,7}

2022-2023	Hotline Call Activity				Intakes Recorded in NJ SPIRIT ^{6,8}														Assignments to CP&P Offices				
	Total Calls to SCR ³	Abandon Calls ⁴	Average time to Answer (seconds)	Resulting NJS Intakes ⁵	CPS Reports		CWS Referrals		No Action Required (NAR)		Related Information (RI)		Information & Referral (I&R)		Information Only (IO)		Unusual Incident (UIRS)		CPS Reports		CWS Referrals		Total
					n	%	n	%	n	%	n	%	n	%	n	%	n	%	n	%	n	%	
April 2022	13,145	2,124	398	12,290	4,669	38.0%	637	5.2%	168	1.4%	2,486	20.2%	2,786	22.7%	1,537	12.5%	7	0.1%	4,669	88.0%	636	12.0%	5,305
May 2022	13,609	1,526	201	13,433	5,228	38.9%	644	4.8%	177	1.3%	2,804	20.9%	2,967	22.1%	1,604	11.9%	9	0.1%	5,228	89.0%	647	11.0%	5,875
June 2022	13,105	1,997	325	12,478	4,854	38.9%	597	4.8%	196	1.6%	2,678	21.5%	2,580	20.7%	1,569	12.6%	4	0.0%	4,854	89.0%	598	11.0%	5,452
July 2022	11,225	1,022	164	11,445	4,277	37.4%	590	5.2%	155	1.4%	2,712	23.7%	1,956	17.1%	1,749	15.3%	6	0.1%	4,277	87.9%	590	12.1%	4,867
August 2022	10,651	841	101	16,623	4,103	24.7%	589	3.5%	164	1.0%	2,465	14.8%	4,070	24.5%	5,202	31.3%	30	0.2%	4,103	87.4%	589	12.6%	4,692
September 2022	12,502	1,199	129	12,828	4,810	37.5%	681	5.3%	178	1.4%	2,818	22.0%	2,724	21.2%	1,614	12.6%	3	0.0%	4,810	87.6%	680	12.4%	5,490
October 2022	13,496	1,226	142	16,804	5,356	31.9%	724	4.3%	178	1.1%	3,153	18.8%	4,212	25.1%	3,160	18.8%	21	0.1%	5,356	88.1%	725	11.9%	6,081
November 2022	12,599	1,217	156	12,974	4,852	37.4%	762	5.9%	189	1.5%	2,998	23.1%	2,658	20.5%	1,509	11.6%	6	0.0%	4,852	86.4%	762	13.6%	5,614
December 2022	11,707	673	88	12,589	4,560	36.2%	730	5.8%	125	1.0%	2,922	23.2%	2,471	19.6%	1,579	12.5%	2	0.0%	4,760	86.7%	731	13.3%	5,491
January 2023	14,498	168	188	12,390	5,215	35.8%	962	4.9%	173	1.3%	3,234	20.7%	3,011	22.1%	1,609	15.2%	2	0.1%	5,463	90.3%	962	14.5%	6,425
February 2023	13,385	1,497	162	13,589	4,921	49.2%	893	6.6%	143	1.1%	3,234	23.8%	2,923	21.5%	1,473	10.8%	2	0.0%	5,141	85.2%	891	14.8%	6,032
March 2023	15,364	1,371	112	13,768	6,064	41.9%	1,119	8.1%	191	1.4%	3,177	23.0%	3,377	12.3%	1,817	13.2%	5	0.0%	6,064	83.8%	1,121	16.2%	7,185
April 2023	12,569	866	73	13,291	5,001	37.6%	870	6.5%	197	1.5%	3,068	23.1%	2,423	18.2%	1,728	13.0%	4	0.0%	5,001	85.2%	870	14.8%	5,871
	12,912	1,210	172	13,423	4,916	36.6%	754	5.6%	172	1.3%	2,904	21.6%	2,935	21.9%	2,012	15.0%	8	0.1%	4,968	86.8%	754	13.2%	5,722
Overall Total	167,855	15,727		174,502	63,910		9,798		2,234		37,749		38,158		26,150		101		64,578	86.8%	9,802	13.2%	74,380

¹Comes from three distinct sources: (1) the Automatic Call Distribution (ACD) phone system; which keeps a count of the number of calls and call routing; (2) Monthly NJSpirit Intakes; which record decision making on calls received by hotline screeners, and (3) NJSpirit

²The number of Intakes, CPS Reports, and CWS Referrals are based on an extract from NJSpirit.

Data extracted by the Office of Research, Evaluation, and Reporting on **May 08, 2023** includes all Intakes, CPS Reports, and CWS Referrals received from **April 01, 2023** through **April 30, 2023**.

³The number calls received through the ACD System that were directed to a screener from any call-in phone number.

⁴The number of calls received through the ACD System that are abandoned either while waiting in queue or while ringing.

⁵The number of Intakes entered in NJSpirit from the number of calls received.

⁶The number of Intakes recorded in NJSpirit, by type of Intake. There is not a one-to-one relationship between an ACD call and an Intake; multiple calls to State Central Registry (SCR) may result in a single Intake, or one call may result in multiple Intakes.

⁷Intake: The process of documenting: a report of alleged abuse or neglect of a child (CPS); a request for services on behalf of a child, or a referral of a child for services (CWS); a call in which the caller provides additional or clarifying information about a current service

CP&P Annual Trends in CPS Reports and CWS Referrals

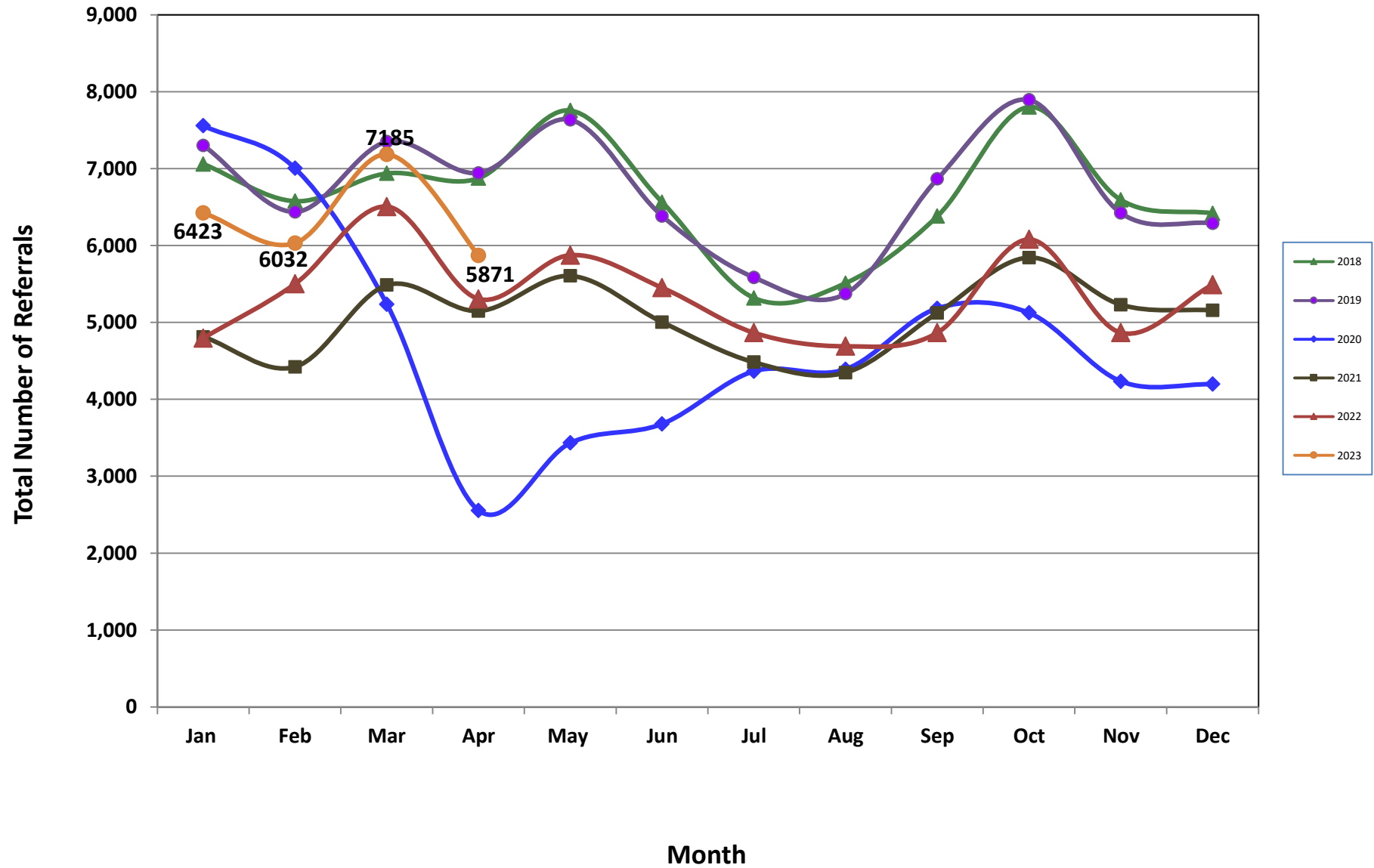


Table 2: Assignments to CP&P Offices: CPS Reports and CWS Referrals¹

Intake Date		CPS Reports ²	CWS Referrals ²	Total Assignments ²
2018	Jan 2018	5,276	1,784	7,060
	Feb 2018	4,933	1,644	6,577
	Mar 2018	5,212	1,727	6,939
	Apr 2018	5,275	1,601	6,876
	May 2018	5,920	1,836	7,756
	Jun 2018	4,948	1,615	6,563
	Jul 2018	4,011	1,308	5,319
	Aug 2018	4,102	1,408	5,510
	Sep 2018	4,748	1,634	6,382
	Oct 2018	5,790	2,011	7,801
	Nov 2018	4,973	1,620	6,593
	Dec 2018	4,891	1,527	6,418
	Total	60,079	19,715	79,794
2019	Jan 2019	5,443	1,858	7,301
	Feb 2019	4,811	1,628	6,439
	Mar 2019	5,677	1,824	7,501
	Apr 2019	5,313	1,630	6,943
	May 2019	5,853	1,781	7,634
	Jun 2019	4,874	1,509	6,383
	Jul 2019	4,277	1,309	5,586
	Aug 2019	4,068	1,306	5,374
	Sep 2019	5,315	1,551	6,866
	Oct 2019	5,968	1,926	7,894
	Nov 2019	4,991	1,432	6,423
	Dec 2019	4,855	1,434	6,289
	Total	61,445	19,188	80,633
2020	Jan 2020	5,715	1,842	7,557
	Feb 2020	5,380	1,624	7,004
	Mar 2020	4,172	1,065	5,237
	Apr 2020	2,149	407	2,556
	May 2020	2,897	537	3,434
	Jun 2020	3,045	636	3,681
	Jul 2020	3,628	738	4,366
	Aug 2020	3,569	822	4,391
	Sep 2020	4,153	1,030	5,183
	Oct 2020	4,257	868	5,125
	Nov 2020	3,564	670	4,234
	Dec 2020	3,517	681	4,198
	Total	46,046	10,920	56,966

Table 2: Assignments to CP&P Offices: CPS Reports and CWS Referrals¹

Intake Date		CPS Reports ²	CWS Referrals ²	Total Assignments ²
2021	Jan 2021	4,018	794	4,812
	Feb 2021	3,767	655	4,422
	Mar 2021	4,657	830	5,487
	Apr 2021	4,398	750	5,148
	May 2021	4,870	736	5,606
	Jun 2021	4,412	592	5,004
	Jul 2021	3,914	570	4,484
	Aug 2021	3,866	482	4,348
	Sep 2021	4,559	564	5,123
	Oct 2021	5,213	630	5,843
	Nov 2021	4,689	541	5,230
	Dec 2021	4,601	557	5,158
	Total	52,964	7,701	60,665
2022	Jan 2022	4,274	523	4,797
	Feb 2022	4,867	635	5,502
	Mar 2022	5,780	727	6,507
	Apr 2022	4,669	636	5,305
	May 2022	5,228	647	5,875
	Jun 2022	4,854	598	5,452
	Jul 2022	4,277	590	4,867
	Aug 2022	4,103	589	4,692
	Sep 2022	4,810	680	5,490
	Oct 2022	5,356	725	6,081
	Nov 2022	4,852	762	5,614
	Dec 2022	4,761	731	5,492
	Total	57,831	7,843	65,674
2023	Jan 2023	5,461	962	6,423
	Feb 2023	5,141	891	6,032
	Mar 2023	6,064	1,121	7,185
	Apr 2023	5,001	870	5,871
	May 2023			
	Jun 2023			
	Jul 2023			
	Aug 2023			
	Sep 2023			
	Oct 2023			
	Nov 2023			
	Dec 2023			
	Total	21,667	3,844	25,511
Grand Total		300,032	69,211	369,243

¹Source of Data: NJ SPIRIT

²A CPS Report or a CWS Referral may include multiple children in a family, with one or more allegation or request for services. In these cases, each CPS Report or CWS Referral is counted once - the CPS Report or the CWS Referral is the unit of analysis rather than the child.

Table 3: Source of CPS Reports and CWS Referrals

	Source	Apr 2022	May 2022	Jun 2022	Jul 2022	Aug 2022	Sep 2022	Oct 2022	Nov 2022	Dec 2022	Jan 2023	Feb 2023	Mar 2023	Apr 2023		13 Month Total	
CPS Reports and CWS Referrals	School Staff	1,227	1,456	929	162	91	1,130	1,602	1,394	1,302	1,809	1,776	2,267	1,242	21%	16,387	22%
	Healthcare Provider	728	763	786	787	777	747	843	825	836	842	865	970	893	15%	10,662	14%
	Law Enforcement	1,373	1,513	1,549	1,624	1,617	1,421	1,514	1,422	1,416	1,524	1,391	1,547	1,566	27%	19,477	26%
	Government Agency	261	233	262	276	260	243	258	240	232	298	273	309	261	4%	3,406	5%
	Parent	333	383	399	420	413	421	426	342	383	419	351	442	439	7%	5,171	7%
	Relative/Friend/Neighbor	301	344	318	380	346	337	296	313	291	304	267	338	331	6%	4,166	6%
	Anonymous	410	527	493	437	458	502	480	458	416	489	435	529	435	7%	6,069	8%
	CP&P	62	42	53	53	46	57	49	45	42	58	60	76	57	1%	700	1%
	Court/Legal	140	116	136	144	147	139	135	113	122	135	121	173	114	2%	1,735	2%
	Community Group/Individual	176	201	205	235	211	180	158	165	163	217	209	184	171	3%	2,475	3%
	Facility Staff (incl Correctional Facility)	59	62	59	59	52	35	44	45	43	50	38	51	65	1%	662	1%
	Child (Self)	25	18	28	30	34	33	21	25	24	42	30	31	31	1%	372	1%
	Other	188	194	222	241	216	224	233	199	208	210	190	240	246	4%	2,811	4%
	Daycare/Babysitter	22	23	13	19	24	21	22	28	14	26	26	28	20	0%	286	0%
Total		5,305	5,875	5,452	4,867	4,692	5,490	6,081	5,614	5,492	6,423	6,032	7,185	5,871		74,379	

Table 4: Monthly Count of CPS Reports and CWS Referrals Assigned to Counties

County														Average Number of Assignments Last 13 Months	Mar 23 to Apr 23 Numerical Difference
	Apr 2022	May 2022	Jun 2022	Jul 2022	Aug 2022	Sep 2022	Oct 2022	Nov 2022	Dec 2022	Jan 2023	Feb 2023	Mar 2023	Apr 2023		
Atlantic	222	250	233	197	217	236	256	197	246	281	222	289	255	239	-34
Bergen	348	327	349	305	276	315	356	350	344	407	398	438	321	349	-117
Burlington	255	300	292	284	240	305	314	332	288	335	300	347	301	299	-46
Camden	458	474	422	385	415	511	499	472	461	486	481	579	483	471	-96
Cape May	62	68	69	76	78	80	81	69	65	74	67	78	73	72	-5
Cumberland	166	206	182	180	166	174	195	183	185	215	171	214	191	187	-23
Essex	532	581	517	477	497	528	590	562	548	633	612	731	568	567	-163
Gloucester	217	218	206	211	190	222	221	248	235	265	233	273	225	228	-48
Hudson	324	409	327	323	242	356	352	342	370	408	388	513	384	364	-129
Hunterdon	46	38	56	29	32	52	54	49	39	53	41	48	37	44	-11
Mercer	217	258	229	239	232	236	294	240	227	245	288	335	277	255	-58
Middlesex	388	432	404	283	308	409	436	422	405	503	453	561	389	415	-172
Monmouth	297	332	286	236	266	289	317	317	277	323	321	350	294	300	-56
Morris	180	216	205	165	171	190	230	179	195	237	221	232	203	202	-29
Ocean	332	372	375	340	320	356	391	352	341	382	350	484	388	368	-96
Passaic	347	385	350	295	264	323	396	326	348	420	385	435	405	360	-30
Salem	55	81	53	62	67	70	60	64	73	83	65	75	68	67	-7
Somerset	107	142	132	113	92	130	174	137	132	171	173	180	146	141	-34
Sussex	95	95	95	73	69	87	114	103	85	115	87	135	90	96	-45
Union	317	332	310	281	259	265	353	301	293	345	369	397	328	319	-69
Warren	79	86	85	73	78	100	91	80	81	108	100	105	111	91	6
County Subtotals	5,044	5,602	5,177	4,627	4,479	5,234	5,774	5,325	5,238	6,089	5,725	6,799	5,537	5,435	-1,262
Central Region IAIU	35	60	32	38	35	47	50	56	46	53	54	77	64	50	-13
Metro Region IAIU	35	41	41	22	23	34	54	33	24	44	42	57	32	37	-25
Northern Region IAIU	38	52	40	32	33	42	50	50	50	57	36	69	63	47	-6
Southern Region IAIU	46	48	56	56	27	50	69	50	52	81	76	72	66	58	-6
IAIU Subtotals	154	201	169	148	118	173	223	189	172	235	208	275	225	192	-50
¹ Unable to Determine	107	72	103	90	93	80	84	99	81	97	99	109	102	94	-7
Other Offices	0	0	3	2	2	3	0	1	1	2	0	2	7	2	5
Grand Total	5,305	5,875	5,452	4,867	4,692	5,490	6,081	5,614	5,492	6,423	6,032	7,185	5,871	5,721	-1,314

¹CPS Reports or CWS Referrals not assigned to an office through the Assignment Designee, but were assigned to an office for an assessment or investigation.



Table 5: Monthly Count of CPS Reports and CWS Referrals Assigned to CP&P Local Offices

County	Local Office	Type of Referral	Apr 2022	May 2022	Jun 2022	Jul 2022	Aug 2022	Sep 2022	Oct 2022	Nov 2022	Dec 2022	Jan 2023	Feb 2023	Mar 2023	Apr 2023	Total	
ATLANTIC	Atlantic East	CPS	106	116	117	88	100	106	106	90	111	114	105	114	110	1,383	
		CWS	26	15	19	21	22	15	15	20	21	28	22	35	23	282	
		Total	132	131	136	109	122	121	121	110	132	142	127	149	133	1,665	
	Atlantic West	CPS	81	107	85	74	84	107	113	113	75	94	112	85	123	100	1,240
		CWS	9	12	12	14	11	8	22	12	20	27	10	17	22	196	
		Total	90	119	97	88	95	115	135	87	114	139	95	140	122	1,436	
	County Totals	CPS	187	223	202	162	184	213	219	165	205	226	190	237	210	2,623	
		CWS	35	27	31	35	33	23	37	32	41	55	32	52	45	478	
		Total	222	250	233	197	217	236	256	197	246	281	222	289	255	3,101	
BERGEN	Bergen Central	CPS	119	119	142	108	82	117	137	145	126	143	149	152	116	1,655	
		CWS	18	13	7	14	27	17	19	21	25	20	21	28	19	249	
		Total	137	132	149	122	109	134	156	166	151	163	170	180	135	1,904	
	Bergen South	CPS	188	179	176	160	142	156	176	159	168	214	194	215	151	2,278	
		CWS	23	16	24	23	25	25	24	25	25	30	34	43	35	352	
		Total	211	195	200	183	167	181	200	184	193	244	228	258	186	2,630	
	County Totals	CPS	307	298	318	268	224	273	313	304	294	357	343	367	267	3,933	
		CWS	41	29	31	37	52	42	43	46	50	50	55	71	54	601	
		Total	348	327	349	305	276	315	356	350	344	407	398	438	321	4,534	
BURLINGTON	Burlington East	CPS	103	134	133	115	96	130	136	133	117	146	126	142	115	1,626	
		CWS	17	15	21	16	22	26	19	20	25	32	22	28	34	297	
		Total	120	149	154	131	118	156	155	153	142	178	148	170	149	1,923	
	Burlington West	CPS	118	129	123	134	106	125	132	154	122	128	129	145	135	1,680	
		CWS	17	22	15	19	16	24	27	25	24	29	23	32	17	290	
		Total	135	151	138	153	122	149	159	179	146	157	152	177	152	1,970	
	County Totals	CPS	221	263	256	249	202	255	268	287	239	274	255	287	250	3,306	
		CWS	34	37	36	35	38	50	46	45	49	61	45	60	51	587	
		Total	255	300	292	284	240	305	314	332	288	335	300	347	301	3,893	
CAMDEN	Camden Central	CPS	95	112	99	95	112	124	136	97	97	117	107	143	96	1,430	
		CWS	9	17	21	13	20	22	20	15	21	18	19	22	26	243	
		Total	104	129	120	108	132	146	156	112	118	135	126	165	122	1,673	
	Camden East	CPS	26	15	19	21	22	15	15	16	96	110	102	105	106	668	
		CWS	15	16	20	8	9	17	20	16	15	12	27	19	16	210	
		Total	122	110	118	92	77	128	113	32	111	122	129	124	122	1,400	
	Camden North	CPS	98	85	71	73	86	110	109	87	101	89	98	118	108	1,233	
		CWS	22	21	12	18	14	12	16	32	20	19	25	33	16	260	
		Total	120	106	83	91	100	122	125	119	121	108	123	151	124	1,493	
	Camden South	CPS	101	122	88	81	92	102	93	86	92	102	92	113	94	1,258	
		CWS	11	7	13	13	14	13	12	18	19	19	11	26	21	197	
		Total	112	129	101	94	106	115	105	104	111	121	103	139	115	1,455	
	County Totals	CPS	401	413	356	333	358	447	431	286	386	418	399	479	404	5,111	
		CWS	57	61	66	52	57	64	68	81	75	68	82	100	79	910	
		Total	458	474	422	385	415	511	499	367	461	486	481	579	483	6,021	
CAPE MAY	Cape May	CPS	56	58	61	68	66	67	71	63	57	66	55	65	57	810	
		CWS	6	10	8	8	12	13	10	6	8	8	12	13	16	130	
		Total	62	68	69	76	78	80	81	69	65	74	67	78	73	940	
	County Totals	CPS	56	58	61	68	66	67	71	63	57	66	55	65	57	810	
		CWS	6	10	8	8	12	13	10	6	8	8	12	13	16	130	
Total	62	68	69	76	78	80	81	69	65	74	67	78	73	940			
CUMBERLAND	Cumberland East	CPS	59	65	65	62	66	56	82	78	61	87	62	65	58	866	
		CWS	4	12	11	10	12	13	5	3	13	17	15	16	9	140	
		Total	63	77	76	72	78	69	87	81	74	104	77	81	67	1,006	
	Cumberland West	CPS	90	115	94	92	78	93	91	95	98	99	81	111	103	1,240	
		CWS	13	14	12	16	10	12	17	7	13	12	13	22	21	182	
		Total	103	129	106	108	88	105	108	102	111	111	94	133	124	1,422	
	County Totals	CPS	149	180	159	154	144	149	173	173	159	186	143	176	161	2,106	
CWS		17	26	23	26	22	25	22	10	26	29	28	38	30	322		
Total		166	206	182	180	166	174	195	183	185	215	171	214	191	2,428		

Data in this report is preliminary and may differ from any final report. This report is produced to ensure continuous quality improvement throughout DCF.



Table 5: Monthly Count of CPS Reports and CWS Referrals Assigned to CP&P Local Offices

County	Local Office	Type of Referral	Apr 2022	May 2022	Jun 2022	Jul 2022	Aug 2022	Sep 2022	Oct 2022	Nov 2022	Dec 2022	Jan 2023	Feb 2023	Mar 2023	Apr 2023	Total
ESSEX	Essex Central	CPS	89	83	77	73	79	85	89	70	74	69	71	88	68	1,015
		CWS	14	10	9	8	9	10	12	19	16	13	16	21	10	167
		Total	103	93	86	81	88	95	101	89	90	82	87	109	78	1,182
	Essex North	CPS	82	91	90	71	60	86	92	85	104	101	118	119	94	1,193
		CWS	7	11	6	13	5	8	16	13	15	18	17	16	16	161
		Total	89	102	96	84	65	94	108	98	119	119	135	135	110	1,354
	Essex South	CPS	82	106	86	77	83	66	90	87	93	98	84	105	84	1141
		CWS	10	17	9	12	9	11	19	12	7	23	14	37	24	204
		Total	92	123	95	89	92	77	109	99	100	121	98	142	108	1345
	Newark Center City	CPS	75	88	67	65	73	74	93	77	69	76	71	83	75	986
		CWS	9	9	10	9	10	8	14	13	12	13	13	17	9	146
		Total	84	97	77	74	83	82	107	90	81	89	84	100	84	1132
	Newark Northeast	CPS	83	72	63	61	74	79	77	82	68	90	89	95	91	1024
		CWS	5	6	7	10	11	14	8	16	14	23	18	21	9	162
		Total	88	78	70	71	85	93	85	98	82	113	107	116	100	1186
	Newark South	CPS	65	76	80	68	75	73	74	76	68	92	81	114	77	1019
		CWS	11	12	13	10	9	14	6	12	8	17	20	15	11	158
		Total	76	88	93	78	84	87	80	88	76	109	101	129	88	1177
	County Totals	CPS	476	516	463	415	444	463	515	477	476	526	514	604	489	6378
		CWS	56	65	54	62	53	65	75	85	72	107	98	127	79	998
		Total	532	581	517	477	497	528	590	562	548	633	612	731	568	7376
GLOUCESTER	Gloucester East	CPS	79	88	81	90	78	74	75	100	97	102	77	113	84	1138
		CWS	18	9	13	13	11	15	10	14	21	16	12	19	15	186
		Total	97	97	94	103	89	89	85	114	118	118	89	132	99	1324
	Gloucester West	CPS	103	109	98	101	85	110	114	114	99	126	123	121	116	1419
		CWS	17	12	14	7	16	23	22	20	18	21	21	20	10	221
		Total	120	121	112	108	101	133	136	134	117	147	144	141	126	1640
	County Totals	CPS	182	197	179	191	163	184	189	214	196	228	200	234	200	2557
CWS		35	21	27	20	27	38	32	34	39	37	33	39	25	407	
Total		217	218	206	211	190	222	221	248	235	265	233	273	225	2964	
HUDSON	Hudson Central	CPS	74	131	82	90	75	93	82	89	85	95	104	113	105	1218
		CWS	11	10	14	10	9	11	15	20	20	13	19	23	20	195
		Total	85	141	96	100	84	104	97	109	105	108	123	136	125	1413
	Hudson North	CPS	65	74	70	69	48	86	88	69	80	86	81	100	85	1001
		CWS	10	10	6	9	6	15	5	9	7	20	18	24	13	152
		Total	75	84	76	78	54	101	93	78	87	106	99	124	98	1153
	Hudson South	CPS	63	80	74	61	40	70	59	53	70	80	60	107	55	872
		CWS	10	14	8	10	8	7	14	12	9	16	12	22	5	147
		Total	73	94	82	71	48	77	73	65	79	96	72	129	60	1019
	Hudson West	CPS	84	84	66	67	47	65	80	76	82	80	78	105	79	993
		CWS	7	6	7	7	9	9	9	14	17	18	16	19	22	160
		Total	91	90	73	74	56	74	89	90	99	98	94	124	101	1153
	County Totals	CPS	286	369	292	287	210	314	309	287	317	341	323	425	324	4084
CWS		38	40	35	36	32	42	43	55	53	67	65	88	60	654	
Total		324	409	327	323	242	356	352	342	370	408	388	513	384	4738	
HUNTERDON	Hunterdon	CPS	39	34	50	25	27	49	50	40	35	46	36	41	32	504
		CWS	7	4	6	4	5	3	4	9	4	7	5	7	5	70
		Total	46	38	56	29	32	52	54	49	39	53	53	48	37	586
	County Totals	CPS	39	34	50	25	27	49	50	40	35	46	36	41	32	504
		CWS	7	4	6	4	5	3	4	9	4	7	5	7	5	70
Total	46	38	56	29	32	52	54	49	39	53	53	48	37	586		
MERCER	Mercer North	CPS	91	131	111	103	103	122	130	108	106	101	124	119	121	1470
		CWS	18	12	15	19	14	10	11	23	17	15	27	15	27	223
		Total	109	143	126	122	117	132	141	131	123	116	151	134	148	1693
	Mercer South	CPS	100	96	93	104	99	90	129	98	96	106	113	172	108	1404
		CWS	8	19	10	13	16	14	24	11	8	23	23	29	21	219
		Total	108	115	103	117	115	104	153	109	104	129	136	201	129	1623
	County Totals	CPS	191	227	204	207	202	212	259	206	202	207	237	291	229	2874
CWS		26	31	25	32	30	24	35	34	25	38	50	44	48	442	
Total		217	258	229	239	232	236	294	240	227	245	287	335	277	3316	

Data in this report is preliminary and may differ from any final report. This report is produced to ensure continuous quality improvement throughout DCF.



Table 5: Monthly Count of CPS Reports and CWS Referrals Assigned to CP&P Local Offices

County	Local Office	Type of Referral	Apr 2022	May 2022	Jun 2022	Jul 2022	Aug 2022	Sep 2022	Oct 2022	Nov 2022	Dec 2022	Jan 2023	Feb 2023	Mar 2023	Apr 2023	Total
MIDDLESEX	Middlesex Central	CPS	126	107	117	64	79	100	109	91	101	119	134	150	107	1404
		CWS	12	14	12	7	2	17	21	15	11	20	15	29	14	189
		Total	138	121	129	71	81	117	130	106	112	139	149	179	121	1593
	Middlesex Coastal	CPS	124	137	127	106	116	137	139	153	139	166	130	160	117	1751
		CWS	12	13	13	14	12	19	14	16	13	30	23	24	15	218
		Total	136	150	140	120	128	156	153	169	152	196	153	184	132	1969
	Middlesex West	CPS	100	147	121	83	89	114	135	131	120	136	133	164	116	1589
		CWS	14	14	14	9	10	22	18	16	21	32	17	34	20	241
		Total	114	161	135	92	99	136	153	147	141	168	150	198	136	1830
	County Totals	CPS	350	391	365	253	284	351	383	375	360	421	397	474	340	4744
		CWS	38	41	39	30	24	58	53	47	45	82	55	87	49	648
		Total	388	432	404	283	308	409	436	422	405	503	452	561	389	5392
MONMOUTH	Monmouth North	CPS	157	172	134	123	123	142	187	158	143	154	160	167	131	1951
		CWS	16	22	5	13	23	11	15	24	17	26	27	26	24	249
		Total	173	194	139	136	146	153	202	182	160	180	187	193	155	2200
	Monmouth South	CPS	110	126	136	88	110	112	106	119	102	113	112	138	114	1486
		CWS	14	12	11	12	10	24	9	16	15	30	22	19	25	219
		Total	124	138	147	100	120	136	115	135	117	143	134	157	139	1705
	County Totals	CPS	267	298	270	211	233	254	293	277	245	267	272	305	245	3437
		CWS	30	34	16	25	33	35	24	40	32	56	49	45	49	468
		Total	297	332	286	236	266	289	317	317	277	323	321	350	294	3905
MORRIS	Morris East	CPS	72	85	85	67	70	82	99	88	83	91	78	83	81	1064
		CWS	11	7	12	9	7	5	10	13	13	17	16	21	14	155
		Total	83	92	97	76	77	87	109	101	96	108	94	104	95	1219
	Morris West	CPS	82	112	99	82	84	95	102	68	89	110	100	104	86	1213
		CWS	15	12	9	7	10	8	19	10	10	19	27	24	22	192
		Total	97	124	108	89	94	103	121	78	99	129	127	128	108	1405
	County Totals	CPS	154	197	184	149	154	177	201	156	172	201	178	187	167	2277
		CWS	26	19	21	16	17	13	29	23	23	36	43	45	36	347
		Total	180	216	205	165	171	190	230	179	195	237	221	232	203	2624
OCEAN	Ocean North	CPS	171	172	172	161	139	163	190	161	165	156	177	220	177	2224
		CWS	16	23	18	13	18	17	21	28	15	33	23	38	20	283
		Total	187	195	190	174	157	180	211	189	180	189	200	258	197	2507
	Ocean South	CPS	128	153	173	145	147	163	163	148	141	170	136	204	160	2031
		CWS	17	24	12	21	16	13	17	15	20	23	14	22	31	245
		Total	145	177	185	166	163	176	180	163	161	193	150	226	191	2276
	County Totals	CPS	299	325	345	306	286	326	353	309	306	326	313	424	337	4255
		CWS	33	47	30	34	34	30	38	43	35	56	37	60	51	528
		Total	332	372	375	340	320	356	391	352	341	382	350	484	388	4783
PASSAIC	Passaic Central	CPS	140	177	164	127	115	157	161	140	148	165	156	180	186	2016
		CWS	25	18	14	5	10	21	24	25	25	26	26	44	27	290
		Total	165	195	178	132	125	178	185	165	173	191	182	224	213	2306
	Passaic North	CPS	154	166	157	143	124	126	187	135	157	192	172	181	165	2059
		CWS	28	24	15	20	15	19	24	26	18	37	31	30	27	314
		Total	182	190	172	163	139	145	211	161	175	229	203	211	192	2373
	County Totals	CPS	294	343	321	270	239	283	348	275	305	357	328	361	351	4075
		CWS	53	42	29	25	25	40	48	51	43	63	57	74	54	604
		Total	347	385	350	295	264	323	396	326	348	420	385	435	405	4679
SALEM	Salem	CPS	48	72	46	51	62	61	53	56	67	68	60	61	55	760
		CWS	7	9	7	11	5	9	7	8	6	15	5	14	13	116
		Total	55	81	53	62	67	70	60	64	73	83	65	75	68	876
	County Totals	CPS	48	72	46	51	62	61	53	56	67	68	60	61	55	760
		CWS	7	9	7	11	5	9	7	8	6	15	5	14	13	116
Total	55	81	53	62	67	70	60	64	73	83	65	75	68	876		
SOMERSET	Somerset	CPS	103	132	119	102	81	116	152	124	122	150	146	151	127	1625
		CWS	4	10	13	11	11	14	22	13	10	21	27	29	19	204
		Total	107	142	132	113	92	130	174	137	132	171	173	180	146	1829
	County Totals	CPS	103	132	119	102	81	116	152	124	122	150	146	151	127	1625
		CWS	4	10	13	11	11	14	22	13	10	21	27	29	19	204
Total	107	142	132	113	92	130	174	137	132	171	173	180	146	1829		

Data in this report is preliminary and may differ from any final report. This report is produced to ensure continuous quality improvement throughout DCF.



Table 5: Monthly Count of CPS Reports and CWS Referrals Assigned to CP&P Local Offices

County	Local Office	Type of Referral														Total	
			Apr 2022	May 2022	Jun 2022	Jul 2022	Aug 2022	Sep 2022	Oct 2022	Nov 2022	Dec 2022	Jan 2023	Feb 2023	Mar 2023	Apr 2023		
SUSSEX	Sussex	CPS	84	85	77	65	64	78	100	89	75	97	70	117	71	1072	
		CWS	11	10	18	8	5	9	14	14	10	18	17	18	19	171	
		Total	95	95	95	73	69	87	114	103	85	115	87	135	90	1243	
	County Totals	CPS	84	85	77	65	64	78	100	89	75	97	70	117	71	1072	
		CWS	11	10	18	8	5	9	14	14	10	18	17	18	19	171	
		Total	95	95	95	73	69	87	114	103	85	115	87	135	90	1243	
UNION	Union Central	CPS	90	88	97	88	74	72	118	89	88	107	101	108	92	1212	
		CWS	4	15	10	10	9	8	11	12	13	19	20	17	14	162	
		Total	94	103	107	98	83	80	129	101	101	126	121	125	106	1374	
	Union East	CPS	98	96	88	90	78	69	95	80	66	95	103	109	90	1157	
		CWS	10	13	19	11	13	14	10	12	7	11	21	22	10	173	
		Total	108	109	107	101	91	83	105	92	73	106	124	131	100	1330	
	Union West	CPS	98	105	89	71	76	87	105	90	96	103	107	122	106	1255	
		CWS	17	15	7	11	9	15	14	18	23	10	17	19	16	191	
		Total	115	120	96	82	85	102	119	108	119	113	124	141	122	1446	
	County Totals	CPS	286	289	274	249	228	228	318	259	250	305	311	339	288	3624	
		CWS	31	43	36	32	31	37	35	42	43	40	58	58	40	526	
		Total	317	332	310	281	259	265	353	301	293	345	369	397	328	4150	
WARREN	Warren	CPS	71	77	78	70	68	88	86	72	69	93	92	83	95	1042	
		CWS	8	9	7	3	10	12	5	8	12	15	8	22	15	134	
		Total	79	86	85	73	78	100	91	80	81	108	100	105	110	1176	
	County Totals	CPS	71	77	78	70	68	88	86	72	69	93	92	83	96	1043	
		CWS	8	9	7	3	10	12	5	8	12	15	8	22	15	134	
		Total	79	86	85	73	78	100	91	80	81	108	100	105	111	1177	
County CPS Referral Total		CPS	4,451	4,987	4,619	4,085	3,923	4,588	5,084	4,494	4,537	5,160	4,862	5,708	4,700	61,198	
County CWS Referral Total		CWS	593	615	558	542	556	646	690	726	701	929	861	1,091	837	9,345	
County Referral Total		Total	5,044	5,602	5,177	4,627	4,479	5,234	5,774	5,220	5,238	6,089	5,723	6,799	5,537	70,543	
Central Region IAIU		CPS	35	60	32	38	35	47	50	56	46	53	54	77	64	647	
		CWS	0	0	0	0	0	0	0	0	0	0	0	0	0	0	0
		Total	35	60	32	38	35	47	50	56	46	53	54	77	64	647	
Metro Region IAIU		CPS	35	41	41	22	23	34	54	33	24	44	42	57	32	482	
		CWS	0	0	0	0	0	0	0	0	0	0	0	0	0	0	0
		Total	35	41	41	22	23	34	54	33	24	44	42	57	32	482	
Northern Region IAIU		CPS	38	52	40	32	33	42	50	50	50	57	36	69	63	612	
		CWS	0	0	0	0	0	0	0	0	0	0	0	0	0	0	0
		Total	38	52	40	32	33	42	50	50	50	57	36	69	63	612	
Southern Region IAIU		CPS	46	48	56	56	27	50	69	50	52	81	76	72	66	749	
		CWS	0	0	0	0	0	0	0	0	0	0	0	0	0	0	0
		Total	46	48	56	56	27	50	69	50	52	81	76	72	66	749	
IAIU CPS Subtotal		CPS	154	201	169	148	118	173	223	189	172	235	208	275	225	2,490	
IAIU CWS Subtotal		CWS	0	0	0	0	0	0	0	0	0	0	0	0	0	0	
IAIU Subtotal		Total	154	201	169	148	118	173	223	189	172	235	208	275	225	2,490	
County and IAIU CPS Subtotal		CPS	4,605	5,188	4,788	4,233	4,041	4,761	5,307	4,683	4,709	5,395	5,070	5,983	4,925	63,688	
County and IAIU CWS Subtotal		CWS	593	615	558	542	556	646	690	726	701	929	861	1,091	837	9,345	
Unable to Determine(1)		Total	107	72	103	90	93	80	84	99	81	97	99	109	102	1,216	
Other Offices		Total	0	0	3	2	2	3	0	1	1	2	2	2	7	25	
Grand Total		Total	5,305	5,875	5,452	4,867	4,692	5,490	6,081	5,509	5,492	6,423	6,032	7,185	5,871	74,274	

(1) CPS Reports or CWS Referrals not assigned to an office through the Assignment Designee, but were assigned to an office for an assessment or investigation.