



Child Protection and Permanency

Monthly Screening and Investigation Report May 2018

Christine Norbut Beyer, MSW
Commissioner

June 8, 2018



Table of Contents

Table 1: NJ State Central Registry Activity: Monthly Child Abuse and Neglect Hotline Calls, Intakes and Assignments to Child Protection & Permanency (CP&P) Offices

Chart 1: CP&P Annual Trends in Child Protection Services (CPS) Reports and Child Welfare Services (CWS) Referrals

Table 2: Assignments to CP&P Offices: CPS Reports and CWS Referrals

Table 3: Source of CPS Reports and CWS Referrals

Table 4: Monthly Count of CPS Reports and CWS Referrals Assigned to Counties

Table 5: Monthly Count of CPS Reports and CWS Referrals Assigned to CP&P Local Offices

Table 1: NJ State Central Registry Activity: Monthly Child Abuse and Neglect Hotline Calls, Intakes and Assignments to CP&P Offices^{1,2,7}

2017 - 2018	Hotline Call Activity				Intakes Recorded in NJ SPIRIT ^{6,8}												Assignments to CP&P Offices				
	Total Calls to SCR ³	Abandon Calls ⁴	Average Time to Answer (seconds)	Resulting NJS Intakes ⁵	CPS Reports		CWS Referrals		No Action Required (NAR)		Related Information (RI)		Information & Referral (I&R)		Information Only (IO)		CPS Reports		CWS Referrals		Total
					n	%	n	%	n	%	n	%	n	%	n	%	n	%	n	%	
May 2017	16,045	823	49	17,359	5,847	33.7%	1,919	11.1%	378	2.2%	4,509	26.0%	2,028	11.7%	2,678	15.4%	5,847	75.3%	1,919	24.7%	7,766
June 2017	13,832	617	41	15,143	4,853	32.0%	1,664	11.0%	476	3.1%	4,063	26.8%	1,642	10.8%	2,445	16.1%	4,853	74.5%	1,665	25.5%	6,518
July 2017	12,245	710	57	13,369	3,814	28.5%	1,389	10.4%	336	2.5%	3,877	29.0%	1,436	10.7%	2,517	18.8%	3,814	73.3%	1,389	26.7%	5,203
August 2017	11,672	445	38	12,927	3,866	29.9%	1,338	10.4%	393	3.0%	3,447	26.7%	1,535	11.9%	2,348	18.2%	3,866	74.3%	1,340	25.7%	5,206
September 2017	13,450	570	40	14,750	4,719	32.0%	1,642	11.1%	381	2.6%	3,951	26.8%	1,700	11.5%	2,357	16.0%	4,719	74.2%	1,643	25.8%	6,362
October 2017	15,474	657	45	16,828	5,613	33.4%	1,968	11.7%	305	1.8%	4,353	25.9%	1,883	11.2%	2,706	16.1%	5,613	74.1%	1,966	25.9%	7,579
November 2017	14,446	672	43	15,694	5,223	33.3%	1,750	11.2%	235	1.5%	4,246	27.1%	1,680	10.7%	2,560	16.3%	5,223	74.9%	1,753	25.1%	6,976
December 2017	13,005	560	38	14,194	4,601	32.4%	1,594	11.2%	220	1.5%	3,843	27.1%	1,724	12.1%	2,212	15.6%	4,601	74.3%	1,594	25.7%	6,195
January 2018	14,876	952	60	15,833	5,276	33.3%	1,784	11.3%	242	1.5%	4,346	27.4%	1,755	11.1%	2,430	15.3%	5,276	74.7%	1,784	25.3%	7,060
February 2018	13,558	727	54	14,638	4,933	33.7%	1,643	11.2%	251	1.7%	3,807	26.0%	1,740	11.9%	2,264	15.5%	4,933	75.0%	1,644	25.0%	6,577
March 2018	14,714	804	55	15,869	5,212	32.8%	1,727	10.9%	288	1.8%	4,187	26.4%	1,855	11.7%	2,600	16.4%	5,212	75.1%	1,727	24.9%	6,939
April 2018	14,148	727	54	15,227	5,275	34.6%	1,603	10.5%	252	1.7%	3,952	26.0%	1,818	11.9%	2,327	15.3%	5,275	76.7%	1,601	23.3%	6,876
May 2018	15,956	1,482	69	16,668	5,920	35.5%	1,833	11.0%	316	1.9%	4,104	24.6%	1,997	12.0%	2,498	15.0%	5,920	76.3%	1,836	23.7%	7,756
	14,109	750	49	15,269	5,012	32.8%	1,681	11.0%	313	2.1%	4,053	26.5%	1,753	11.5%	2,457	16.1%	5,012	74.9%	1,682	25.1%	6,693
Overall Total	183,421	9,746		198,499	65,152		21,854		4,073		52,685		22,793		31,942		65,152	74.9%	21,861	25.1%	87,013

¹Comes from three distinct sources: (1) the Automatic Call Distribution (ACD) phone system; which keeps a count of the number of calls and call routing; (2) Monthly NJSpirit Intakes; which record decision making on calls received by hotline screeners, and (3) NJSpirit extracts of assigned CWS Referrals and CPS Reports.

²The number of Intakes, CPS Reports, and CWS Referrals are based on an extract from NJSpirit. Data extracted by the Office of Research, Evaluation, and Reporting on **June 8, 2018** includes all Intakes, CPS Reports, and CWS Referrals received from **May 1, 2018 through May 31, 2018**.

³The number calls received through the ACD System that were directed to a screener from any call-in phone number.

⁴The number of calls received through the ACD System that are abandoned either while waiting in queue or while ringing.

⁵The number of Intakes entered in NJSpirit from the number of calls received.

⁶The number of Intakes recorded in NJSpirit, by type of Intake. There is not a one-to-one relationship between an ACD call and an Intake; multiple calls to State Central Registry (SCR) may result in a single Intake, or one call may result in multiple Intakes.

⁷Intake: The process of documenting: a report of alleged abuse or neglect of a child (CPS); a request for services on behalf of a child, or a referral of a child for services (CWS); a call in which the caller provides additional or clarifying information about a current service case or active investigation (RI); informing a caller of, or referring a caller to, services available from other private or public sources (I&R); a call that requires no action by CP&P (NAR); or a response to a simple inquiry (IO).

⁸NJ SPIRIT: NJ Statewide Protection Investigation and Reporting Information Tool case management system

CP&P Annual Trends in CPS Reports and CWS Referrals

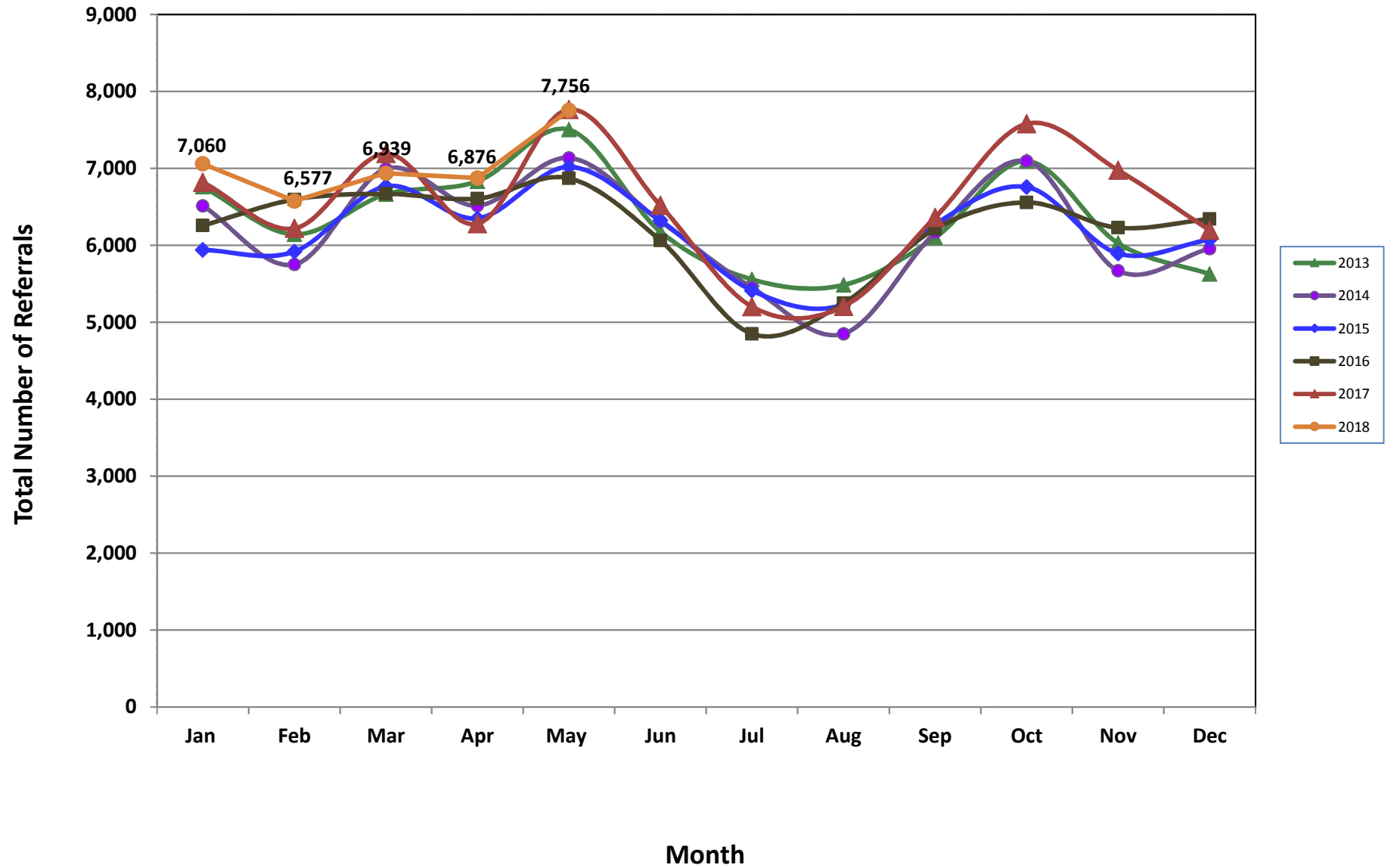


Table 2: Assignments to CP&P Offices: CPS Reports and CWS Referrals¹

Intake Date ³		CPS Reports ²	CWS Referrals ²	Total Assignments ²
2013	Jan 2013	5,464	1,296	6,760
	Feb 2013	4,966	1,177	6,143
	Mar 2013	5,355	1,309	6,664
	Apr 2013	5,430	1,402	6,832
	May 2013	5,993	1,510	7,503
	Jun 2013	4,947	1,230	6,177
	Jul 2013	4,330	1,228	5,558
	Aug 2013	4,330	1,155	5,485
	Sep 2013	4,851	1,251	6,102
	Oct 2013	5,614	1,481	7,095
	Nov 2013	4,694	1,334	6,028
	Dec 2013	4,397	1,229	5,626
	Total	60,371	15,602	75,973
2014	Jan 2014	5,097	1,416	6,513
	Feb 2014	4,457	1,295	5,752
	Mar 2014	5,408	1,586	6,994
	Apr 2014	5,049	1,467	6,516
	May 2014	5,501	1,635	7,136
	Jun 2014	4,796	1,517	6,313
	Jul 2014	4,202	1,247	5,449
	Aug 2014	3,629	1,222	4,851
	Sep 2014	4,668	1,498	6,166
	Oct 2014	5,509	1,586	7,095
	Nov 2014	4,254	1,416	5,670
	Dec 2014	4,509	1,447	5,956
	Total	57,079	17,332	74,411
2015	Jan 2015	4,549	1,391	5,940
	Feb 2015	4,574	1,345	5,919
	Mar 2015	5,187	1,580	6,767
	Apr 2015	4,967	1,384	6,351
	May 2015	5,457	1,561	7,018
	Jun 2015	4,887	1,436	6,323
	Jul 2015	4,140	1,273	5,413
	Aug 2015	3,978	1,256	5,234
	Sep 2015	4,776	1,495	6,271
	Oct 2015	5,139	1,619	6,758
	Nov 2015	4,417	1,477	5,894
	Dec 2015	4,530	1,544	6,074
	Total	56,601	17,361	73,962

Table 2: Assignments to CP&P Offices: CPS Reports and CWS Referrals¹

	Intake Date ³	CPS Reports ²	CWS Referrals ²	Total Assignments ²
2016	Jan 2016	4,686	1,571	6,257
	Feb 2016	4,974	1,622	6,596
	Mar 2016	5,000	1,669	6,669
	Apr 2016	5,065	1,542	6,607
	May 2016	5,238	1,633	6,871
	Jun 2016	4,602	1,461	6,063
	Jul 2016	3,663	1,187	4,850
	Aug 2016	3,941	1,307	5,248
	Sep 2016	4,654	1,559	6,213
	Oct 2016	4,935	1,622	6,557
	Nov 2016	4,677	1,552	6,229
	Dec 2016	4,762	1,580	6,342
		Total	56,197	18,305
2017	Jan 2017	5,111	1,708	6,819
	Feb 2017	4,716	1,504	6,220
	Mar 2017	5,349	1,843	7,192
	Apr 2017	4,790	1,490	6,280
	May 2017	5,847	1,919	7,766
	Jun 2017	4,853	1,665	6,518
	Jul 2017	3,814	1,389	5,203
	Aug 2017	3,866	1,340	5,206
	Sep 2017	4,719	1,643	6,362
	Oct 2017	5,613	1,966	7,579
	Nov 2017	5,223	1,753	6,976
	Dec 2017	4,601	1,594	6,195
		Total	58,502	19,814
2018	Jan 2018	5,276	1,784	7,060
	Feb 2018	4,933	1,644	6,577
	Mar 2018	5,212	1,727	6,939
	Apr 2018	5,275	1,601	6,876
	May 2018	5,920	1,836	7,756
		Total	26,616	8,592
Grand Total		315,366	97,006	412,372

¹Source of Data: NJ SPIRIT

²A CPS Report or a CWS Referral may include multiple children in a family, with one or more allegation or request for services. In these cases, each CPS Report or CWS Referral is counted once - the CPS Report or the CWS Referral is the unit of analysis rather than the child.

³Prior to January 2014, the number of CPS Reports and CWS Referrals was based on the type of assignment of the CPS Report or CWS Referral. Beginning in January 2014, the number of CPS Reports and CWS Referrals is based on the number of CPS Reports and CWS Referrals received.

Table 3: Source of CPS Reports and CWS Referrals

	Source	May 2017	Jun 2017	Jul 2017	Aug 2017	Sep 2017	Oct 2017	Nov 2017	Dec 2017	Jan 2018	Feb 2018	Mar 2018	Apr 2018	May 2018		13 Month Total	
CPS Reports and CWS Referrals	School Staff	2,167	1,149	150	90	1211	2030	1851	1622	1932	1970	1969	1783	2213	29%	20,137	23%
	Healthcare Provider	924	932	818	873	861	968	953	848	1003	809	931	932	994	13%	11,846	14%
	Law Enforcement	1,177	1,072	1,148	1169	1180	1236	1130	988	1018	1001	1149	1179	1264	16%	14,711	17%
	Government Agency	434	438	400	423	442	475	399	408	392	410	466	417	446	6%	5,550	6%
	Parent	632	586	571	535	528	567	571	487	569	468	469	509	548	7%	7,040	8%
	Relative/Friend/Neighbor	536	525	541	494	462	513	493	396	531	394	440	475	496	6%	6,296	7%
	Anonymous	837	754	580	627	711	753	641	595	602	623	641	628	789	10%	8,781	10%
	CP&P	128	144	145	142	142	150	107	129	125	121	107	130	143	2%	1,713	2%
	Court/Legal	141	183	131	161	162	148	116	135	130	130	131	158	164	2%	1,890	2%
	Community Group/Individual	336	283	288	307	279	320	299	265	318	289	294	325	290	4%	3,893	4%
	Facility Staff (incl Correctional Facility)	95	102	90	92	89	97	75	46	85	70	72	68	97	1%	1,078	1%
	Child (Self)	38	38	35	41	46	32	41	25	49	33	41	38	34	0%	491	1%
	Other	300	296	283	235	236	272	273	237	294	242	207	217	261	3%	3,353	4%
	Daycare/Babysitter	21	16	23	17	13	18	27	14	12	17	22	17	17	0%	234	0%
	Total		7,766	6,518	5,203	5,206	6,362	7,579	6,976	6,195	7,060	6,577	6,939	6,876	7,756		87,013

Table 4: Monthly Count of CPS Reports and CWS Referrals Assigned to Counties

County														Average Number of Assignments Last 13 Months	Apr 18 to May 18 Numerical Difference
	May 2017	Jun 2017	Jul 2017	Aug 2017	Sep 2017	Oct 2017	Nov 2017	Dec 2017	Jan 2018	Feb 2018	Mar 2018	Apr 2018	May 2018		
Atlantic	312	253	214	245	255	293	253	221	291	208	267	260	326	261	66
Bergen	425	351	284	291	362	428	418	416	394	371	458	374	474	388	100
Burlington	394	283	262	256	328	371	343	294	315	307	290	312	302	312	-10
Camden	629	571	447	492	530	675	576	535	634	526	559	562	643	568	81
Cape May	118	76	80	64	68	86	84	77	82	73	68	95	100	82	5
Cumberland	260	236	203	207	249	252	213	193	250	174	223	265	266	230	1
Essex	878	770	561	585	642	804	721	665	787	695	778	770	811	728	41
Gloucester	274	280	221	235	232	282	267	252	268	219	239	272	298	257	26
Hudson	519	434	295	290	418	452	454	418	439	386	466	454	509	426	55
Hunterdon	59	37	49	40	64	64	50	60	60	54	58	67	62	56	-5
Mercer	327	272	210	222	308	282	298	232	264	262	262	295	330	274	35
Middlesex	530	404	350	257	420	533	525	419	540	463	498	473	534	457	61
Monmouth	435	357	276	264	349	442	381	327	413	384	427	376	446	375	70
Morris	260	239	163	168	216	290	250	219	269	191	245	240	256	231	16
Ocean	473	377	339	351	342	422	418	356	411	364	420	397	427	392	30
Passaic	550	424	324	319	425	576	513	421	451	456	469	448	571	457	123
Salem	90	85	74	54	102	83	100	80	90	68	99	92	90	85	-2
Somerset	180	151	111	117	127	166	169	172	156	157	179	174	180	157	6
Sussex	102	93	72	92	92	106	111	92	126	90	102	124	112	101	-12
Union	375	335	255	246	345	353	343	324	361	366	352	321	379	335	58
Warren	85	99	109	69	117	131	102	72	94	101	117	108	117	102	9
County Subtotals	7,275	6,127	4,899	4,864	5,991	7,091	6,589	5,845	6,695	5,915	6,576	6,479	7,233	6,275	754
Central Region IAIU	75	67	42	55	54	68	73	55	62	58	63	62	89	63	27
Metro Region IAIU	69	48	34	25	41	58	48	56	54	63	48	52	78	52	26
Northern Region IAIU	87	49	47	34	51	70	58	54	60	53	53	69	88	59	19
Southern Region IAIU	108	80	50	63	66	102	77	84	90	75	74	86	95	81	9
IAIU Subtotals	339	244	173	177	212	298	256	249	266	249	238	269	350	255	81
Unable to Determine¹	152	146	129	163	158	187	129	98	94	407	122	125	169	160	44
Other Offices	0	1	2	2	1	3	2	3	5	6	3	3	4	3	1
Grand Total	7,766	6,518	5,203	5,206	6,362	7,579	6,976	6,195	7,060	6,577	6,939	6,876	7,756	6,693	880

¹CPS Reports or CWS Referrals not assigned to an office through the Assignment Designee, but were assigned to an office for an assessment or investigation.



Table 5: Monthly Count of CPS Reports and CWS Referrals Assigned to CP&P Local Offices

County	Local Office	Type of Referral	May 2017	Jun 2017	Jul 2017	Aug 2017	Sep 2017	Oct 2017	Nov 2017	Dec 2017	Jan 2018	Feb 2018	Mar 2018	Apr 2018	May 2018	Total
ATLANTIC	Atlantic East	CPS	141	107	108	102	107	138	99	94	127	95	131	118	157	1,524
		CWS	45	41	32	41	35	47	51	33	36	29	28	32	40	490
		Total	186	148	140	143	142	185	150	127	163	124	159	150	197	2,014
	Atlantic West	CPS	102	76	60	81	90	74	79	75	94	68	75	88	98	1,060
		CWS	24	29	14	21	23	34	24	19	34	16	33	22	31	324
		Total	126	105	74	102	113	108	103	94	128	84	108	110	129	1,384
	County Totals	CPS	243	183	168	183	197	212	178	169	221	163	206	206	255	2,584
		CWS	69	70	46	62	58	81	75	52	70	45	61	54	71	814
		Total	312	253	214	245	255	293	253	221	291	208	267	260	326	3,398
BERGEN	Bergen Central	CPS	129	109	72	70	106	142	140	128	138	112	144	122	141	1,553
		CWS	51	31	34	33	47	45	47	48	40	44	54	37	58	569
		Total	180	140	106	103	153	187	187	176	178	156	198	159	199	2,122
	Bergen South	CPS	166	151	117	138	149	182	167	177	154	163	198	144	199	2,105
		CWS	79	60	61	50	60	59	64	63	62	52	62	71	76	819
		Total	245	211	178	188	209	241	231	240	216	215	260	215	275	2,924
	County Totals	CPS	295	260	189	208	255	324	307	305	292	275	342	266	340	3,658
		CWS	130	91	95	83	107	104	111	111	102	96	116	108	134	1,388
		Total	425	351	284	291	362	428	418	416	394	371	458	374	474	5,046
BURLINGTON	Burlington East	CPS	155	107	116	97	125	146	137	101	129	110	118	116	104	1,561
		CWS	61	35	32	30	39	52	43	38	39	46	35	36	46	532
		Total	216	142	148	127	164	198	180	139	168	156	153	152	150	2,093
	Burlington West	CPS	130	108	81	96	116	126	117	99	108	117	105	108	120	1,431
		CWS	48	33	33	33	48	47	46	56	39	34	32	52	32	533
		Total	178	141	114	129	164	173	163	155	147	151	137	160	152	1,964
	County Totals	CPS	285	215	197	193	241	272	254	200	237	227	223	224	224	2,992
		CWS	109	68	65	63	87	99	89	94	78	80	67	88	78	1,065
		Total	394	283	262	256	328	371	343	294	315	307	290	312	302	4,057
CAMDEN	Camden Central	CPS	125	136	99	117	106	148	129	122	157	108	126	111	141	1,625
		CWS	31	38	29	36	27	40	41	51	31	30	39	32	47	472
		Total	156	174	128	153	133	188	170	173	188	138	165	143	188	2,097
	Camden East	CPS	111	103	75	94	104	123	118	100	116	99	129	139	127	1,438
		CWS	46	32	34	28	30	49	46	27	39	37	32	30	30	460
		Total	157	135	109	122	134	172	164	127	155	136	161	169	157	1,898
	Camden North	CPS	155	114	88	87	112	113	109	82	118	114	105	106	120	1,423
		CWS	28	43	37	29	41	47	31	35	50	24	34	25	41	465
		Total	183	157	125	116	153	160	140	117	168	138	139	131	161	1,888
	Camden South	CPS	103	88	71	78	88	108	74	85	89	79	75	100	113	1,151
		CWS	30	17	14	23	22	47	28	33	34	35	19	19	24	345
		Total	133	105	85	101	110	155	102	118	123	114	94	119	137	1,496
	County Totals	CPS	494	441	333	376	410	492	430	389	480	400	435	456	501	5,637
		CWS	135	130	114	116	120	183	146	146	154	126	124	106	142	1,742
		Total	629	571	447	492	530	675	576	535	634	526	559	562	643	7,379
CAPE MAY	Cape May	CPS	100	67	64	45	58	66	61	58	64	47	46	69	81	826
		CWS	18	9	16	19	10	20	23	19	18	26	22	26	19	245
		Total	118	76	80	64	68	86	84	77	82	73	68	95	100	1,071
	County Totals	CPS	100	67	64	45	58	66	61	58	64	47	46	69	81	826
		CWS	18	9	16	19	10	20	23	19	18	26	22	26	19	245
		Total	118	76	80	64	68	86	84	77	82	73	68	95	100	1,071
CUMBERLAND	Cumberland East	CPS	70	48	50	54	72	68	48	44	62	36	55	60	56	723
		CWS	21	20	33	23	19	27	13	22	16	17	18	18	17	264
		Total	91	68	83	77	91	95	61	66	78	53	73	78	73	987
	Cumberland West	CPS	135	123	84	103	118	117	113	101	146	92	126	146	146	1,550
		CWS	34	45	36	27	40	40	39	26	26	29	24	41	47	454
		Total	169	168	120	130	158	157	152	127	172	121	150	187	193	2,004
	County Totals	CPS	205	171	134	157	190	185	161	145	208	128	181	206	202	2,273
		CWS	55	65	69	50	59	67	52	48	42	46	42	59	64	718
		Total	260	236	203	207	249	252	213	193	250	174	223	265	266	2,991

Data in this report is preliminary and may differ from any final report. This report is produced to ensure continuous quality improvement throughout DCF.



Table 5: Monthly Count of CPS Reports and CWS Referrals Assigned to CP&P Local Offices

County	Local Office	Type of Referral	Monthly Count													Total
			May 2017	Jun 2017	Jul 2017	Aug 2017	Sep 2017	Oct 2017	Nov 2017	Dec 2017	Jan 2018	Feb 2018	Mar 2018	Apr 2018	May 2018	
ESSEX	Essex Central	CPS	118	92	82	78	79	121	108	79	93	77	107	103	113	1,250
		CWS	49	42	33	23	33	40	33	28	42	22	35	36	39	455
		Total	167	134	115	101	112	161	141	107	135	99	142	139	152	1,705
	Essex North	CPS	87	84	50	58	70	68	67	64	80	71	75	70	83	927
		CWS	31	32	25	18	23	35	31	25	25	21	34	24	24	348
		Total	118	116	75	76	93	103	98	89	105	92	109	94	107	1,275
	Essex South	CPS	76	62	45	53	58	69	68	72	83	64	63	83	65	861
		CWS	32	21	12	23	19	34	20	28	18	30	21	20	24	302
		Total	108	83	57	76	77	103	88	100	101	94	84	103	89	1163
	Newark Center City	CPS	121	114	71	75	89	110	98	104	107	86	105	88	105	1273
		CWS	38	47	31	37	30	29	34	18	34	35	34	38	42	447
		Total	159	161	102	112	119	139	132	122	141	121	139	126	147	1720
	Newark Northeast	CPS	108	103	83	90	94	99	106	76	107	97	97	99	104	1263
		CWS	39	32	25	18	29	44	34	30	44	39	44	38	40	456
		Total	147	135	108	108	123	143	140	106	151	136	141	137	144	1719
Newark South	CPS	128	99	78	75	80	116	93	103	116	111	116	128	138	1381	
	CWS	51	42	26	37	38	39	29	38	38	42	47	43	34	504	
	Total	179	141	104	112	118	155	122	141	154	153	163	171	172	1885	
County Totals	CPS	638	554	409	429	470	583	540	498	586	506	563	571	608	6955	
	CWS	240	216	152	156	172	221	181	167	201	189	215	199	203	2512	
	Total	878	770	561	585	642	804	721	665	787	695	778	770	811	9467	
GLOUCESTER	Gloucester East	CPS	104	106	74	91	79	102	89	96	94	85	79	113	118	1230
		CWS	35	31	27	25	33	28	34	30	35	22	24	41	26	391
		Total	139	137	101	116	112	130	123	126	129	107	103	154	144	1621
	Gloucester West	CPS	118	104	91	85	86	123	113	100	105	93	100	96	118	1332
		CWS	17	39	29	34	34	29	31	26	34	19	36	22	36	386
		Total	135	143	120	119	120	152	144	126	139	112	136	118	154	1718
	County Totals	CPS	222	210	165	176	165	225	202	196	199	178	179	209	236	2562
		CWS	52	70	56	59	67	57	65	56	69	41	60	63	62	777
		Total	274	280	221	235	232	282	267	252	268	219	239	272	298	3339
HUDSON	Hudson Central	CPS	78	84	59	52	69	71	87	83	103	88	98	115	131	1118
		CWS	34	32	23	26	35	34	41	38	46	37	36	36	56	474
		Total	112	116	82	78	104	105	128	121	149	125	134	151	187	1592
	Hudson North	CPS	103	67	67	42	72	76	83	87	75	77	92	98	79	1018
		CWS	38	39	19	14	31	29	33	21	29	12	32	26	38	361
		Total	141	106	86	56	103	105	116	108	104	89	124	124	117	1379
	Hudson South	CPS	101	70	53	45	80	86	68	46	57	47	65	53	47	818
		CWS	45	33	16	21	27	39	17	19	26	19	24	15	18	319
		Total	146	103	69	66	107	125	85	65	83	66	89	68	65	1137
	Hudson West	CPS	89	77	33	66	74	87	104	89	74	80	80	80	102	1035
		CWS	31	32	25	24	30	30	21	35	29	26	39	31	38	391
		Total	120	109	58	90	104	117	125	124	103	106	119	111	140	1426
County Totals	CPS	371	298	212	205	295	320	342	305	309	292	335	346	359	3989	
	CWS	148	136	83	85	123	132	112	113	130	94	131	108	150	1545	
	Total	519	434	295	290	418	452	454	418	439	386	466	454	509	5534	
HUNTERDON	Hunterdon	CPS	38	31	30	32	46	40	30	44	43	36	42	47	44	503
		CWS	21	6	19	8	18	24	20	16	17	18	16	20	18	221
		Total	59	37	49	40	64	64	50	60	60	54	58	67	62	724
	County Totals	CPS	38	31	30	32	46	40	30	44	43	36	42	47	44	503
		CWS	21	6	19	8	18	24	20	16	17	18	16	20	18	221
Total	59	37	49	40	64	64	50	60	60	60	54	58	67	62	724	
MERCER	Mercer North	CPS	120	98	62	94	103	104	105	79	94	103	95	124	125	1306
		CWS	47	29	35	20	49	34	38	35	46	43	42	34	39	491
		Total	167	127	97	114	152	138	143	114	140	146	137	158	164	1797
	Mercer South	CPS	118	113	78	83	109	109	112	86	89	98	90	104	134	1323
		CWS	42	32	35	25	46	35	43	32	35	18	35	33	32	443
		Total	160	145	113	108	155	144	155	118	124	116	125	137	166	1766
	County Totals	CPS	238	211	140	177	212	213	217	165	183	201	185	228	259	2629
		CWS	89	61	70	45	95	69	81	67	81	61	77	67	71	934
Total		327	272	210	222	307	282	298	232	264	262	262	295	330	3563	

Data in this report is preliminary and may differ from any final report. This report is produced to ensure continuous quality improvement throughout DCF.



Table 5: Monthly Count of CPS Reports and CWS Referrals Assigned to CP&P Local Offices

County	Local Office	Type of Referral	May 2017	Jun 2017	Jul 2017	Aug 2017	Sep 2017	Oct 2017	Nov 2017	Dec 2017	Jan 2018	Feb 2018	Mar 2018	Apr 2018	May 2018	Total	
MIDDLESEX	Middlesex Central	CPS	95	78	75	44	99	102	115	87	139	96	118	104	118	1270	
		CWS	39	25	29	17	36	41	35	40	35	40	35	29	36	29	426
		Total	134	103	104	61	135	143	150	122	179	131	147	140	147	147	1696
	Middlesex Coastal	CPS	135	112	98	75	112	142	124	121	127	124	125	128	144	144	1567
		CWS	47	43	23	28	41	51	53	33	51	28	45	36	52	52	531
		Total	182	155	121	103	153	193	177	154	178	152	170	164	196	196	2098
	Middlesex West	CPS	160	111	90	62	112	141	140	106	132	134	148	128	146	146	1610
		CWS	54	35	35	31	20	56	58	37	51	46	33	41	45	45	542
		Total	214	146	125	93	132	197	198	143	183	180	181	169	191	191	2152
	County Totals	CPS	390	301	263	181	323	385	379	314	398	354	391	360	408	408	4447
CWS		140	103	87	76	97	148	146	105	142	109	107	113	126	126	1499	
Total		530	404	350	257	420	533	525	419	540	463	498	473	534	534	5946	
MONMOUTH	Monmouth North	CPS	174	145	126	103	139	173	152	125	160	167	162	149	174	1949	
		CWS	64	52	30	32	38	54	54	44	61	60	58	56	61	664	
		Total	238	197	156	135	177	227	206	169	221	227	220	205	235	235	2613
	Monmouth South	CPS	144	119	85	97	120	161	133	114	150	123	159	137	160	1702	
		CWS	53	41	35	32	52	54	42	44	42	34	48	34	51	562	
		Total	197	160	120	129	172	215	175	158	192	157	207	171	211	211	2264
	County Totals	CPS	318	264	211	200	259	334	285	239	310	290	321	286	334	334	3651
		CWS	117	93	65	64	90	108	96	88	103	94	106	90	112	112	1226
		Total	435	357	276	264	349	442	381	327	413	384	427	376	446	446	4877
MORRIS	Morris East	CPS	88	82	53	52	60	81	86	66	96	64	73	71	94	966	
		CWS	28	29	21	26	35	36	38	31	40	32	34	32	29	411	
		Total	116	111	74	78	95	117	124	97	136	96	107	103	123	123	1377
	Morris West	CPS	104	93	70	64	85	112	99	88	86	63	97	103	107	1171	
		CWS	40	35	19	26	36	61	27	34	47	32	41	34	26	458	
		Total	144	128	89	90	121	173	126	122	133	95	138	137	133	1629	
	County Totals	CPS	192	175	123	116	145	193	185	154	182	127	170	174	201	2137	
		CWS	68	64	40	52	71	97	65	65	87	64	75	66	55	869	
		Total	260	239	163	168	216	290	250	219	269	191	245	240	256	3006	
OCEAN	Ocean North	CPS	193	148	122	121	134	179	181	168	163	133	161	167	166	2036	
		CWS	60	41	38	46	37	52	45	36	56	43	44	40	69	607	
		Total	253	189	160	167	171	231	226	204	219	176	205	207	235	2643	
	Ocean South	CPS	182	133	134	130	129	144	142	121	159	146	174	146	149	1889	
		CWS	38	55	45	54	42	47	50	31	33	42	41	44	43	565	
		Total	220	188	179	184	171	191	192	152	192	188	215	190	192	2454	
	County Totals	CPS	375	281	256	251	263	323	323	289	322	279	335	313	315	3925	
		CWS	98	96	83	100	79	99	95	67	89	85	85	84	112	1172	
		Total	473	377	339	351	342	422	418	356	411	364	420	397	427	5097	
PASSAIC	Passaic Central	CPS	197	150	117	128	172	228	199	155	173	171	171	178	243	2282	
		CWS	82	52	40	40	60	90	76	78	65	75	74	62	87	881	
		Total	279	202	157	168	232	318	275	233	238	246	245	240	330	3163	
	Passaic North	CPS	194	157	119	104	130	176	158	131	134	135	166	152	185	1941	
		CWS	77	65	48	47	63	82	80	57	79	75	58	56	56	843	
		Total	271	222	167	151	193	258	238	188	213	210	224	208	241	2784	
	County Totals	CPS	391	307	236	232	302	404	357	286	307	306	337	330	428	4223	
		CWS	159	117	88	87	123	172	156	135	144	150	132	118	143	1724	
		Total	550	424	324	319	425	576	513	421	451	456	469	448	571	5947	
SALEM	Salem	CPS	65	68	52	45	82	67	77	58	68	56	79	77	73	867	
		CWS	25	17	22	9	20	16	23	22	22	12	20	15	17	240	
		Total	90	85	74	54	102	83	100	80	90	68	99	92	90	1107	
	County Totals	CPS	65	68	52	45	82	67	77	58	68	56	79	77	73	867	
		CWS	25	17	22	9	20	16	23	22	22	12	20	15	17	240	
Total	90	85	74	54	102	83	100	80	90	68	99	92	90	1107			
SOMERSET	Somerset	CPS	135	121	74	83	97	136	130	119	119	127	115	140	136	1532	
		CWS	45	30	37	34	30	30	39	53	37	30	64	34	44	507	
		Total	180	151	111	117	127	166	169	172	156	157	179	174	180	2039	
	County Totals	CPS	135	121	74	83	97	136	130	119	119	127	115	140	136	1532	
		CWS	45	30	37	34	30	30	39	53	37	30	64	34	44	507	
Total	180	151	111	117	127	166	169	172	156	157	179	174	180	2039			

Data in this report is preliminary and may differ from any final report. This report is produced to ensure continuous quality improvement throughout DCF.

Table 5: Monthly Count of CPS Reports and CWS Referrals Assigned to CP&P Local Offices

County	Local Office	Type of Referral														Total
			May 2017	Jun 2017	Jul 2017	Aug 2017	Sep 2017	Oct 2017	Nov 2017	Dec 2017	Jan 2018	Feb 2018	Mar 2018	Apr 2018	May 2018	
SUSSEX	Sussex	CPS	70	67	52	67	69	80	86	70	85	64	70	90	87	957
		CWS	32	26	20	25	23	26	25	22	41	26	32	34	25	357
		Total	102	93	72	92	92	106	111	92	126	90	102	124	112	1314
	County Totals	CPS	70	67	52	67	69	80	86	70	85	64	70	90	87	957
		Total	102	93	72	92	92	106	111	92	126	90	102	124	112	1314
UNION	Union Central	CPS	87	84	73	72	68	74	84	91	88	89	87	88	98	1083
		CWS	21	35	30	21	40	31	18	19	30	36	29	25	28	363
		Total	108	119	103	93	108	105	102	110	118	125	116	113	126	1446
	Union East	CPS	97	97	55	69	91	88	91	75	102	91	98	74	89	1117
		CWS	35	27	15	15	31	39	26	29	26	32	33	26	27	361
		Total	132	124	70	84	122	127	117	104	128	123	131	100	116	1478
	Union West	CPS	94	57	53	51	86	88	88	83	77	84	83	81	98	1023
		CWS	41	35	29	18	29	33	36	27	38	34	22	27	39	408
		Total	135	92	82	69	115	121	124	110	115	118	105	108	137	1431
	County Totals	CPS	278	238	181	192	245	250	263	249	267	264	268	243	285	3223
		CWS	97	97	74	54	100	103	80	75	94	102	84	78	94	1132
		Total	375	335	255	246	345	353	343	324	361	366	352	321	379	4355
WARREN	Warren	CPS	64	68	80	50	83	98	69	50	75	72	85	88	93	975
		CWS	21	31	29	19	34	33	33	22	19	29	32	20	24	346
		Total	85	99	109	69	117	131	102	72	94	101	117	108	117	1321
	County Totals	CPS	64	68	80	50	83	98	69	50	75	72	85	88	93	975
		Total	85	99	109	69	117	131	102	72	94	101	117	108	117	1321
County CPS Referral Total		CPS	5,407	4,531	3,569	3,598	4,407	5,202	4,876	4,302	4,955	4,392	4,908	4,929	5,469	60,545
County CWS Referral Total		CWS	1,868	1,596	1,330	1,266	1,583	1,889	1,713	1,543	1,740	1,523	1,668	1,550	1,764	21,033
County Referral Total		Total	7,275	6,127	4,899	4,864	5,990	7,091	6,589	5,845	6,695	5,915	6,576	6,479	7,233	81,578
Central Region IAIU	CPS	75	67	42	55	54	68	73	55	62	58	63	62	89	823	
	CWS	0	0	0	0	0	0	0	0	0	0	0	0	0	0	
	Total	75	67	42	55	54	68	73	55	62	58	63	62	89	823	
Metro Region IAIU	CPS	69	48	34	25	41	58	48	56	54	63	48	52	78	674	
	CWS	0	0	0	0	0	0	0	0	0	0	0	0	0	0	
	Total	69	48	34	25	41	58	48	56	54	63	48	52	78	674	
Northern Region IAIU	CPS	87	49	47	34	51	70	58	54	60	53	53	69	88	773	
	CWS	0	0	0	0	0	0	0	0	0	0	0	0	0	0	
	Total	87	49	47	34	51	70	58	54	60	53	53	69	88	773	
Southern Region IAIU	CPS	108	80	50	63	66	102	77	84	90	75	74	86	95	1,050	
	CWS	0	0	0	0	0	0	0	0	0	0	0	0	0	0	
	Total	108	80	50	63	66	102	77	84	90	75	74	86	95	1,050	
IAIU CPS Subtotal		CPS	339	244	173	177	212	298	256	249	266	249	238	269	350	3,320
IAIU CWS Subtotal		CWS	0	0	0	0	0	0	0	0	0	0	0	0	0	0
IAIU Subtotal		Total	339	244	173	177	212	298	256	249	266	249	238	269	350	3,320
County and IAIU CPS Subtotal		CPS	5,746	4,775	3,742	3,775	4,619	5,500	5,132	4,551	5,221	4,641	5,146	5,198	5,819	63,865
County and IAIU CWS Subtotal		CWS	1,868	1,596	1,330	1,266	1,583	1,889	1,713	1,543	1,740	1,523	1,668	1,550	1,764	21,033
Unable to Determine ⁽¹⁾		Total	152	146	129	163	158	187	129	98	94	407	122	125	169	2,079
Other Offices		Total	0	1	2	2	2	3	2	3	5	6	3	3	4	36
Grand Total		Total	7,766	6,518	5,203	5,206	6,362	7,579	6,976	6,195	7,060	6,577	6,939	6,876	7,756	87,013

⁽¹⁾CPS Reports or CWS Referrals not assigned to an office through the Assignment Designee, but were assigned to an office for an assessment or investigation.