



Child Protection and Permanency

Monthly Screening and Investigation Report May 2021

Christine Norbut Beyer, MSW
Commissioner



Table of Contents

Table 1: NJ State Central Registry Activity: Monthly Child Abuse and Neglect Hotline Calls, Intakes and Assignments to Child Protection & Permanency (CP&P) Offices

Chart 1: CP&P Annual Trends in Child Protection Services (CPS) Reports and Child Welfare Services (CWS) Referrals

Table 2: Assignments to CP&P Offices: CPS Reports and CWS Referrals

Table 3: Source of CPS Reports and CWS Referrals

Table 4: Monthly Count of CPS Reports and CWS Referrals Assigned to Counties

Table 5: Monthly Count of CPS Reports and CWS Referrals Assigned to CP&P Local Offices

Table 1: NJ State Central Registry Activity: Monthly Child Abuse and Neglect Hotline Calls, Intakes and Assignments to CP&P Offices^{1,2,7}

2020-2021	Hotline Call Activity				Intakes Recorded in NJ SPIRIT ^{6,8}														Assignments to CP&P Offices				
	Total Calls to SCR ³	Abandon Calls ⁴	Average Time to Answer (seconds)	Resulting NJS Intakes ⁵	CPS Reports		CWS Referrals		No Action Required (NAR)		Related Information (RI)		Information & Referral (I&R)		Information Only (IO)		Unusual Incident (UIRS)		CPS Reports		CWS Referrals		Total
					n	%	n	%	n	%	n	%	n	%	n	%	n	%	n	%	n	%	
May 2020	9,654	1,808	249	9,402	2,897	30.8%	537	5.7%	137	1.5%	2,342	24.9%	1,974	21.0%	1,515	16.1%	0	0.0%	2,897	84.4%	537	15.6%	3,434
June 2020	10,871	3,782	305	9,131	3,045	33.3%	636	7.0%	133	1.5%	2,281	25.0%	1,554	17.0%	1,482	16.2%	0	0.0%	3,045	82.7%	636	17.3%	3,681
July 2020	11,649	1,628	237	11,499	3,628	31.6%	738	6.4%	145	1.3%	2,892	25.2%	1,815	15.8%	2,281	19.8%	0	0.0%	3,628	83.1%	738	16.9%	4,366
August 2020	11,248	1,493	232	11,204	3,569	31.9%	821	7.3%	164	1.5%	2,993	26.7%	1,649	14.7%	2,008	17.9%	0	0.0%	3,569	81.3%	822	18.7%	4,391
September 2020	12,277	1,495	203	12,505	4,153	33.2%	1,031	8.2%	246	2.0%	3,097	24.8%	2,046	16.4%	1,932	15.4%	0	0.0%	4,153	80.1%	1,030	19.9%	5,183
October 2020	13,118	1,258	183	13,320	4,257	32.0%	867	6.5%	191	1.4%	3,220	24.2%	2,709	20.3%	2,076	15.6%	0	0.0%	4,257	83.1%	868	16.9%	5,125
November 2020	10,789	1,462	183	10,930	3,564	32.6%	670	6.1%	141	1.3%	2,608	23.9%	2,159	19.8%	1,788	16.4%	0	0.0%	3,564	84.2%	670	15.8%	4,234
December 2020	9,618	1,385	238	10,567	3,517	33.3%	681	6.4%	149	1.4%	2,345	22.2%	2,123	20.1%	1,752	16.6%	0	0.0%	3,517	83.8%	681	16.2%	4,198
January 2021	11,339	1,452	199	12,032	4,018	33.4%	794	6.6%	190	1.6%	2,818	23.4%	2,324	19.3%	1,888	15.7%	0	0.0%	4,018	83.5%	794	16.5%	4,812
February 2021	11,060	966	186	11,302	3,767	33.3%	655	5.8%	167	1.5%	2,499	22.1%	2,394	21.2%	1,820	16.1%	0	0.0%	3,767	85.2%	655	14.8%	4,422
March 2021	12,731	666	75	13,372	4,657	34.8%	829	6.2%	261	2.0%	2,868	21.4%	2,796	20.9%	1,961	14.7%	0	0.0%	4,657	84.9%	830	15.1%	5,487
April 2021	11,772	680	94	12,287	4,398	35.8%	750	6.1%	187	1.5%	2,796	22.8%	2,287	18.6%	1,869	15.2%	0	0.0%	4,398	85.4%	750	14.6%	5,148
May 2021	12,496	686	87	13,132	4,870	37.1%	734	5.6%	219	1.7%	3,025	23.0%	2,523	19.2%	1,761	13.4%	0	0.0%	4,870	86.9%	736	13.1%	5,606
	11,432	1,443	190	11,591	3,872	33.4%	749	6.5%	179	1.5%	2,753	23.7%	2,181	18.8%	1,856	16.0%	0	0.0%	3,872	83.8%	750	16.2%	4,622
Overall Total	148,622	18,761		150,683	50,340		9,743		2,330		35,784		28,353		24,133		0		50,340	83.8%	9,747	16.2%	60,087

¹Comes from three distinct sources: (1) the Automatic Call Distribution (ACD) phone system; which keeps a count of the number of calls and call routing; (2) Monthly NJSpirit Intakes; which record decision making on calls received by hotline screeners, and (3) NJSpirit extracts of assigned CWS Referrals and CPS Reports.

²The number of Intakes, CPS Reports, and CWS Referrals are based on an extract from NJSpirit.

Data extracted by the Office of Research, Evaluation, and Reporting on **June 08, 2021** includes all Intakes, CPS Reports, and CWS Referrals received from **May 01, 2021** through **May 31, 2021**.

³The number calls received through the ACD System that were directed to a screener from any call-in phone number.

⁴The number of calls received through the ACD System that are abandoned either while waiting in queue or while ringing.

⁵The number of Intakes entered in NJSpirit from the number of calls received.

⁶The number of Intakes recorded in NJSpirit, by type of Intake. There is not a one-to-one relationship between an ACD call and an Intake; multiple calls to State Central Registry (SCR) may result in a single Intake, or one call may result in multiple Intakes.

⁷Intake: The process of documenting: a report of alleged abuse or neglect of a child (CPS); a request for services on behalf of a child, or a referral of a child for services (CWS); a call in which the caller provides additional or clarifying information about a current service case or active investigation (RI); informing a caller of, or referring a caller to, services available from other private or public sources (I&R); a call that requires no action by CP&P (NAR); or a response to a simple inquiry (IO).

CP&P Annual Trends in CPS Reports and CWS Referrals

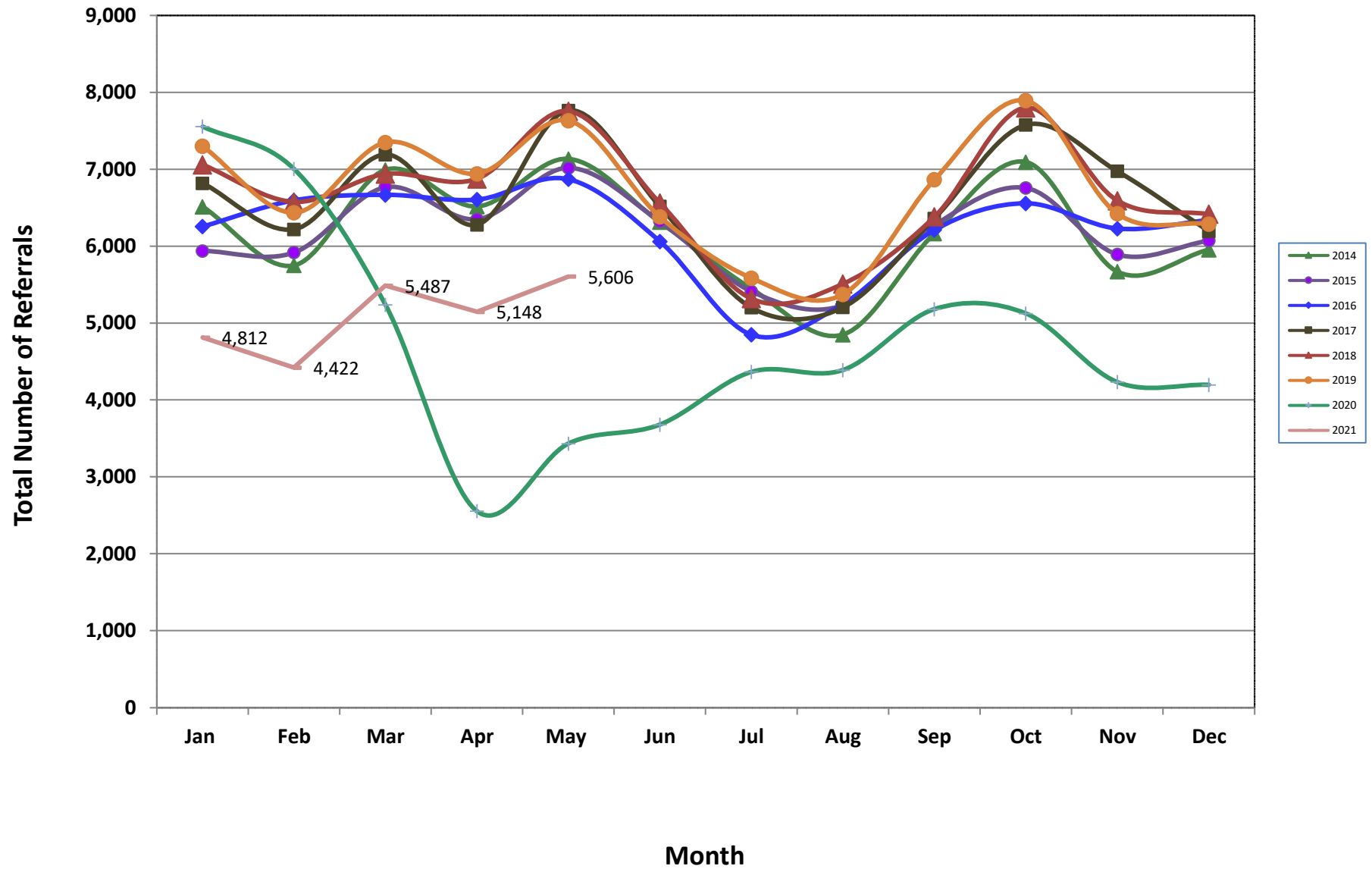


Table 2: Assignments to CP&P Offices: CPS Reports and CWS Referrals¹

Intake Date ³		CPS Reports ²	CWS Referrals ²	Total Assignments ²
2016	Jan 2016	4,686	1,571	6,257
	Feb 2016	4,974	1,622	6,596
	Mar 2016	5,000	1,669	6,669
	Apr 2016	5,065	1,542	6,607
	May 2016	5,238	1,633	6,871
	Jun 2016	4,602	1,461	6,063
	Jul 2016	3,663	1,187	4,850
	Aug 2016	3,941	1,307	5,248
	Sep 2016	4,654	1,559	6,213
	Oct 2016	4,935	1,622	6,557
	Nov 2016	4,677	1,552	6,229
	Dec 2016	4,762	1,580	6,342
	Total	56,197	18,305	74,502
2017	Jan 2017	5,111	1,708	6,819
	Feb 2017	4,716	1,504	6,220
	Mar 2017	5,349	1,843	7,192
	Apr 2017	4,790	1,490	6,280
	May 2017	5,847	1,919	7,766
	Jun 2017	4,853	1,665	6,518
	Jul 2017	3,814	1,389	5,203
	Aug 2017	3,866	1,340	5,206
	Sep 2017	4,719	1,643	6,362
	Oct 2017	5,613	1,966	7,579
	Nov 2017	5,223	1,753	6,976
	Dec 2017	4,601	1,594	6,195
	Total	58,502	19,814	78,316
2018	Jan 2018	5,276	1,784	7,060
	Feb 2018	4,933	1,644	6,577
	Mar 2018	5,212	1,727	6,939
	Apr 2018	5,275	1,601	6,876
	May 2018	5,920	1,836	7,756
	Jun 2018	4,948	1,615	6,563
	Jul 2018	4,011	1,308	5,319
	Aug 2018	4,102	1,408	5,510
	Sep 2018	4,748	1,634	6,382
	Oct 2018	5,790	2,011	7,801
	Nov 2018	4,973	1,620	6,593
	Dec 2018	4,891	1,527	6,418
	Total	60,079	19,715	79,794

Table 2: Assignments to CP&P Offices: CPS Reports and CWS Referrals¹

Intake Date ³		CPS Reports ²	CWS Referrals ²	Total Assignments ²
2019	Jan 2019	5,443	1,858	7,301
	Feb 2019	4,811	1,628	6,439
	Mar 2019	5,677	1,824	7,501
	Apr 2019	5,313	1,630	6,943
	May 2019	5,853	1,781	7,634
	Jun 2019	4,874	1,509	6,383
	Jul 2019	4,277	1,309	5,586
	Aug 2019	4,068	1,306	5,374
	Sep 2019	5,315	1,551	6,866
	Oct 2019	5,968	1,926	7,894
	Nov 2019	4,991	1,432	6,423
	Dec 2019	4,855	1,434	6,289
	Total	61,445	19,188	80,633
2020	Jan 2020	5,715	1,842	7,557
	Feb 2020	5,380	1,624	7,004
	Mar 2020	4,172	1,065	5,237
	Apr 2020	2,149	407	2,556
	May 2020	2,897	537	3,434
	Jun 2020	3,045	636	3,681
	Jul 2020	3,628	738	4,366
	Aug 2020	3,569	822	4,391
	Sep 2020	4,153	1,030	5,183
	Oct 2020	4,257	868	5,125
	Nov 2020	3,564	670	4,234
	Dec 2020	3,517	681	4,198
	Total	46,046	10,920	56,966
2021	Jan 2021	4,018	794	4,812
	Feb 2021	3,767	655	4,422
	Mar 2021	4,657	830	5,487
	Apr 2021	4,398	750	5,148
	May 2021	4,870	736	5,606
	Total	21,710	3,765	25,475
Grand Total		303,979	91,707	395,686

Table 3: Source of CPS Reports and CWS Referrals

CPS Reports and CWS Referrals	Source	May 2020	Jun 2020	Jul 2020	Aug 2020	Sep 2020	Oct 2020	Nov 2020	Dec 2020	Jan 2021	Feb 2021	Mar 2021	Apr 2021	May 2021		13 Month Total	
	School Staff	210	119	70	63	565	809	515	523	709	664	989	759	913	16%	6,908	11%
	Healthcare Provider	656	775	784	819	882	869	817	760	835	815	930	897	917	16%	10,756	18%
	Law Enforcement	1,086	1,140	1,440	1,372	1,400	1,303	1,147	1,092	1,226	1,122	1,311	1,329	1,542	28%	16,510	27%
	Government Agency	198	238	274	304	295	278	180	233	280	261	323	309	272	5%	3,445	6%
	Parent	281	326	400	395	431	351	330	355	374	302	392	409	387	7%	4,733	8%
	Relative/Friend/Neighbor	296	326	392	343	424	337	294	286	336	284	332	338	355	6%	4,343	7%
	Anonymous	284	294	416	425	502	525	386	400	442	415	499	450	487	9%	5,525	9%
	CP&P	31	42	47	104	95	98	72	82	62	61	96	89	89	2%	968	2%
	Court/Legal	59	50	80	81	99	86	77	81	99	91	127	102	111	2%	1,143	2%
	Community Group/Individual	143	157	193	171	177	163	141	132	168	152	182	159	175	3%	2,113	4%
	Facility Staff (incl Correctional Facility)	41	43	63	61	72	68	53	60	56	48	52	64	67	1%	748	1%
	Child (Self)	17	17	25	29	31	29	34	31	29	27	35	37	33	1%	374	1%
	Other	130	149	175	219	204	198	177	150	187	171	204	197	245	4%	2,406	4%
Daycare/Babysitter	2	5	7	5	6	11	11	13	9	9	15	9	13	0%	115	0%	
Total	3,434	3,681	4,366	4,391	5,183	5,125	4,234	4,198	4,812	4,422	5,487	5,148	5,606		60,087		

Table 4: Monthly Count of CPS Reports and CWS Referrals Assigned to Counties

County														Average Number of Assignments Last 13 Months	Apr 21 to May 21 Numerical Difference
	May 2020	Jun 2020	Jul 2020	Aug 2020	Sep 2020	Oct 2020	Nov 2020	Dec 2020	Jan 2021	Feb 2021	Mar 2021	Apr 2021	May 2021		
Atlantic	161	180	214	195	243	256	181	199	205	185	237	224	265	211	41
Bergen	189	194	232	233	300	319	255	245	276	289	323	314	343	270	29
Burlington	181	185	231	237	271	278	224	224	230	232	297	269	307	244	38
Camden	305	325	362	345	433	443	337	356	420	432	497	459	456	398	-3
Cape May	50	66	72	65	87	61	72	61	70	73	87	68	81	70	13
Cumberland	116	130	145	131	165	167	147	147	141	154	203	190	173	155	-17
Essex	364	366	440	486	538	500	419	416	458	452	530	441	520	456	79
Gloucester	160	177	198	192	232	214	186	202	197	176	239	237	219	202	-18
Hudson	226	199	282	268	274	325	234	296	301	243	305	313	341	277	28
Hunterdon	30	24	33	40	42	38	36	29	46	42	41	47	47	38	0
Mercer	144	164	197	187	234	207	193	194	201	184	221	213	264	200	51
Middlesex	231	283	310	321	344	356	286	303	356	295	382	364	428	328	64
Monmouth	196	233	263	267	302	311	254	237	304	289	304	294	296	273	2
Morris	124	137	152	150	202	198	164	148	182	139	198	168	162	163	-6
Ocean	257	264	336	278	349	319	294	290	321	291	394	389	396	321	7
Passaic	213	219	267	250	321	312	255	225	328	243	310	326	346	278	20
Salem	44	53	56	48	56	68	67	53	71	64	83	76	76	63	0
Somerset	92	82	114	101	155	130	123	106	114	120	130	139	153	120	14
Sussex	48	51	86	73	92	101	74	46	63	73	103	95	78	76	-17
Union	147	190	181	225	261	253	189	210	256	218	271	260	321	229	61
Warren	50	56	75	77	86	98	67	66	93	70	102	73	104	78	31
County Subtotals	3,328	3,578	4,246	4,169	4,987	4,954	4,057	4,053	4,633	4,264	5,257	4,959	5,376	4,451	417
Central Region IAIU	6	23	17	17	26	23	23	13	28	20	30	20	41	22	21
Metro Region IAIU	11	2	13	13	8	14	16	11	12	11	22	14	18	13	4
Northern Region IAIU	12	10	14	12	11	10	11	8	18	14	23	20	28	15	8
Southern Region IAIU	18	20	23	30	25	28	23	26	33	34	46	35	48	30	13
IAIU Subtotals	47	55	67	72	70	75	73	58	91	79	121	89	135	79	46
¹ Unable to Determine	59	48	51	149	126	93	103	85	85	79	108	98	94	91	-4
Other Offices	0	0	2	1	0	3	1	2	3	0	1	2	1	1	-1
Grand Total	3,434	3,681	4,366	4,391	5,183	5,125	4,234	4,198	4,812	4,422	5,487	5,148	5,606	4,622	458

¹CPS Reports or CWS Referrals not assigned to an office through the Assignment Designee, but were assigned to an office for an assessment or investigation.



Table 5: Monthly Count of CPS Reports and CWS Referrals Assigned to CP&P Local Offices

County	Local Office	Type of Referral														Total
			May 2020	Jun 2020	Jul 2020	Aug 2020	Sep 2020	Oct 2020	Nov 2020	Dec 2020	Jan 2021	Feb 2021	Mar 2021	Apr 2021	May 2021	
ATLANTIC	Atlantic East	CPS	70	82	96	100	109	110	76	87	95	98	105	105	128	1,261
		CWS	16	25	24	22	32	17	13	16	17	14	15	21	22	254
		Total	86	107	120	122	141	127	89	103	112	112	120	126	150	1,515
	Atlantic West	CPS	64	57	75	64	88	107	79	82	76	63	100	87	94	1,036
		CWS	11	16	19	9	14	22	13	14	17	10	17	11	21	194
		Total	75	73	94	73	102	129	92	96	93	73	117	98	115	1,230
	County Totals	CPS	134	139	171	164	197	217	155	169	171	161	205	192	222	2,297
		CWS	27	41	43	31	46	39	26	30	34	24	32	32	43	448
		Total	161	180	214	195	243	256	181	199	205	185	237	224	265	2,745
BERGEN	Bergen Central	CPS	66	66	85	85	89	105	70	80	101	96	123	111	122	1,199
		CWS	13	21	14	12	31	33	19	15	23	25	18	17	12	253
		Total	79	87	99	97	120	138	89	95	124	121	141	128	134	1,452
	Bergen South	CPS	90	92	104	118	144	156	138	119	127	140	157	161	191	1,737
		CWS	20	15	29	18	36	25	28	31	25	28	25	25	18	323
		Total	110	107	133	136	180	181	166	150	152	168	182	186	209	2,060
	County Totals	CPS	156	158	189	203	233	261	208	199	228	236	280	272	313	2,936
		CWS	33	36	43	30	67	58	47	46	48	53	43	42	30	576
		Total	189	194	232	233	300	319	255	245	276	289	323	314	343	3,512
BURLINGTON	Burlington East	CPS	74	95	80	101	100	126	95	104	92	111	133	121	128	1,360
		CWS	17	11	29	17	30	19	16	13	21	19	18	27	21	258
		Total	91	106	109	118	130	145	111	117	113	130	151	148	149	1,618
	Burlington West	CPS	76	68	99	95	117	108	93	87	89	87	122	98	135	1,274
		CWS	14	11	23	24	24	25	20	20	28	15	24	23	23	274
		Total	90	79	122	119	141	133	113	107	117	102	146	121	158	1,548
	County Totals	CPS	150	163	179	196	217	234	188	191	181	198	255	219	263	2,634
		CWS	31	22	52	41	54	44	36	33	49	34	42	50	44	532
		Total	181	185	231	237	271	278	224	224	230	232	297	269	307	3,166
CAMDEN	Camden Central	CPS	68	86	74	69	87	99	79	79	100	85	115	91	105	1,137
		CWS	11	15	21	18	20	18	14	17	20	17	22	12	17	222
		Total	79	101	95	87	107	117	93	96	120	102	137	103	122	1,359
	Camden East	CPS	54	59	67	78	98	101	64	79	93	88	118	112	104	1,115
		CWS	8	14	18	15	19	13	13	15	13	20	16	18	10	192
		Total	62	73	85	93	117	114	77	94	106	108	134	130	114	1,307
	Camden North	CPS	56	71	81	63	85	86	62	59	81	107	85	93	97	1,026
		CWS	15	12	13	18	20	19	19	12	17	15	13	15	17	205
		Total	71	83	94	81	105	105	81	71	98	122	98	108	114	1,231
	Camden South	CPS	73	59	71	67	84	96	75	78	77	93	108	102	91	1,074
		CWS	20	9	17	17	20	11	11	17	19	7	20	16	15	199
		Total	93	68	88	84	104	107	86	95	96	100	128	118	106	1,273
	County Totals	CPS	251	275	293	277	354	382	280	295	351	373	426	398	397	4,352
		CWS	54	50	69	68	79	61	57	61	69	59	71	61	59	818
		Total	305	325	362	345	433	443	337	356	420	432	497	459	456	5,170
CAPE MAY	Cape May	CPS	37	55	58	52	75	52	60	52	59	59	77	60	70	766
		CWS	13	11	14	13	12	9	12	9	11	14	10	8	11	147
		Total	50	66	72	65	87	61	72	61	70	73	87	68	81	913
	County Totals	CPS	37	55	58	52	75	52	60	52	59	59	77	60	70	766
		CWS	13	11	14	13	12	9	12	9	11	14	10	8	11	147
		Total	50	66	72	65	87	61	72	61	70	73	87	68	81	913
CUMBERLAND	Cumberland East	CPS	40	44	37	43	49	61	46	41	45	41	75	55	54	631
		CWS	8	6	6	6	6	12	8	5	17	7	11	11	11	114
		Total	48	50	43	49	55	73	54	46	62	48	86	66	65	745
	Cumberland West	CPS	56	66	91	70	89	77	76	78	68	91	101	110	91	1,064
		CWS	12	14	11	12	21	17	17	23	11	15	16	14	17	200
		Total	68	80	102	82	110	94	93	101	79	106	117	124	108	1,264
	County Totals	CPS	96	110	128	113	138	138	122	119	113	132	176	165	145	1,695
		CWS	20	20	17	18	27	29	25	28	28	22	27	25	28	314
		Total	116	130	145	131	165	167	147	147	141	154	203	190	173	2,009

Data in this report is preliminary and may differ from any final report. This report is produced to ensure continuous quality improvement throughout DCF.



Table 5: Monthly Count of CPS Reports and CWS Referrals Assigned to CP&P Local Offices

County	Local Office	Type of Referral														Total
			May 2020	Jun 2020	Jul 2020	Aug 2020	Sep 2020	Oct 2020	Nov 2020	Dec 2020	Jan 2021	Feb 2021	Mar 2021	Apr 2021	May 2021	
ESSEX	Essex Central	CPS	60	58	61	67	69	76	59	66	81	80	68	63	62	870
		CWS	8	8	20	17	17	15	14	10	24	13	11	14	9	180
		Total	68	66	81	84	86	91	73	76	105	93	79	77	71	1,050
	Essex North	CPS	28	39	47	42	45	50	48	44	38	58	81	66	79	665
		CWS	18	8	9	9	21	16	3	13	8	12	20	15	15	167
		Total	46	47	56	51	66	66	51	57	46	70	101	81	94	832
	Essex South	CPS	32	46	40	54	53	48	42	38	57	71	70	64	81	696
		CWS	7	10	11	16	14	12	8	10	14	13	23	13	12	163
		Total	39	56	51	70	67	60	50	48	71	84	93	77	93	859
	Newark Center City	CPS	59	53	73	69	99	76	75	73	61	70	63	77	74	922
		CWS	12	6	16	12	18	10	12	8	10	5	15	9	5	138
		Total	71	59	89	81	117	86	87	81	71	75	78	86	79	1060
	Newark Northeast	CPS	47	55	58	62	72	72	47	50	62	54	66	54	83	782
		CWS	5	17	15	17	17	22	13	14	13	9	13	11	10	176
		Total	52	72	73	79	89	94	60	64	75	63	79	65	93	958
Newark South	CPS	69	50	72	93	91	84	83	76	74	56	82	45	83	958	
	CWS	19	16	18	28	22	19	15	14	16	11	18	10	7	213	
	Total	88	66	90	121	113	103	98	90	90	67	100	55	90	1171	
County Totals	CPS	295	301	351	387	429	406	354	347	373	389	430	369	462	4893	
	CWS	69	65	89	99	109	94	65	69	85	63	100	72	58	1037	
	Total	364	366	440	486	538	500	419	416	458	452	530	441	520	5930	
GLOUCESTER	Gloucester East	CPS	67	71	79	75	83	73	79	83	65	62	93	91	94	1015
		CWS	7	14	15	15	14	14	11	6	18	13	19	17	16	179
		Total	74	85	94	90	97	87	90	89	83	75	112	108	110	1194
	Gloucester West	CPS	76	75	87	88	112	108	82	95	98	89	116	114	96	1236
		CWS	10	17	17	14	23	19	14	18	16	12	11	15	13	199
		Total	86	92	104	102	135	127	96	113	114	101	127	129	109	1435
	County Totals	CPS	143	146	166	163	195	181	161	178	163	151	209	205	190	2251
		CWS	17	31	32	29	37	33	25	24	34	25	30	32	29	378
		Total	160	177	198	192	232	214	186	202	197	176	239	237	219	2629
HUDSON	Hudson Central	CPS	69	62	81	74	75	90	71	98	84	68	98	78	96	1044
		CWS	12	19	21	19	21	32	15	18	25	6	32	16	16	252
		Total	81	81	102	93	96	122	86	116	109	74	130	94	112	1296
	Hudson North	CPS	42	34	56	46	53	45	45	47	58	55	55	59	72	667
		CWS	13	12	14	15	16	14	9	10	13	15	11	14	14	170
		Total	55	46	70	61	69	59	54	57	71	70	66	73	86	837
	Hudson South	CPS	31	23	36	40	31	48	21	29	35	25	34	50	50	453
		CWS	8	7	10	7	7	6	12	8	10	7	9	14	12	117
		Total	39	30	46	47	38	54	33	37	45	32	43	64	62	570
	Hudson West	CPS	45	35	47	55	58	65	53	69	65	55	58	69	68	742
		CWS	6	7	17	12	13	25	8	17	11	12	8	13	13	162
		Total	51	42	64	67	71	90	61	86	76	67	66	82	81	904
	County Totals	CPS	187	154	220	215	217	248	190	243	242	203	245	256	286	2906
		CWS	39	45	62	53	57	77	44	53	59	40	60	57	55	701
		Total	226	199	282	268	274	325	234	296	301	243	305	313	341	3607
HUNTERDON	Hunterdon	CPS	27	20	29	34	31	31	28	23	38	38	34	38	38	409
		CWS	3	4	4	6	11	7	8	6	8	4	7	9	9	86
		Total	30	24	33	40	42	38	36	29	46	42	41	47	47	495
	County Totals	CPS	27	20	29	34	31	31	28	23	38	38	34	38	38	409
		CWS	3	4	4	6	11	7	8	6	8	4	7	9	9	86
Total	30	24	33	40	42	38	36	29	46	42	41	47	47	495		
MERCER	Mercer North	CPS	50	76	87	78	101	78	83	86	91	81	93	108	128	1140
		CWS	16	11	16	15	17	20	21	16	13	11	9	8	11	184
		Total	66	87	103	93	118	98	104	102	104	92	102	116	139	1324
	Mercer South	CPS	65	65	81	78	92	94	75	74	71	72	99	81	109	1056
		CWS	13	12	13	16	24	15	14	18	26	20	20	16	16	223
		Total	78	77	94	94	116	109	89	92	97	92	119	97	125	1279
	County Totals	CPS	115	141	168	156	193	172	158	160	162	153	192	189	237	2196
CWS		29	23	29	31	41	35	35	34	39	31	29	24	27	407	
Total	144	164	197	187	234	207	193	194	201	184	221	213	264	2603		

Data in this report is preliminary and may differ from any final report. This report is produced to ensure continuous quality improvement throughout DCF.



Table 5: Monthly Count of CPS Reports and CWS Referrals Assigned to CP&P Local Offices

County	Local Office	Type of Referral														Total
			May 2020	Jun 2020	Jul 2020	Aug 2020	Sep 2020	Oct 2020	Nov 2020	Dec 2020	Jan 2021	Feb 2021	Mar 2021	Apr 2021	May 2021	
MIDDLESEX	Middlesex Central	CPS	62	68	67	66	73	87	65	71	104	73	98	110	99	1043
		CWS	6	10	11	12	19	18	11	19	14	17	13	20	11	181
		Total	68	78	78	78	92	105	76	90	118	90	111	130	110	1224
	Middlesex Coastal	CPS	69	95	109	116	105	120	91	89	95	84	121	96	131	1321
		CWS	12	15	17	20	16	15	13	11	18	13	21	16	20	207
		Total	81	110	126	136	121	135	104	100	113	97	142	112	151	1528
	Middlesex West	CPS	75	79	84	88	102	96	90	93	106	91	107	104	142	1257
		CWS	7	16	22	19	29	20	16	20	19	17	22	18	25	250
		Total	82	95	106	107	131	116	106	113	125	108	129	122	167	1507
	County Totals	CPS	206	242	260	270	280	303	246	253	305	248	326	310	372	3621
		CWS	25	41	50	51	64	53	40	50	51	47	56	54	56	638
		Total	231	283	310	321	344	356	286	303	356	295	382	364	428	4259
MONMOUTH	Monmouth North	CPS	98	106	123	118	128	149	127	102	139	149	154	135	146	1674
		CWS	18	22	26	27	33	23	15	20	24	21	22	15	20	286
		Total	116	128	149	145	161	172	142	122	163	170	176	150	166	1960
	Monmouth South	CPS	71	89	99	100	118	116	91	94	124	102	114	131	120	1369
		CWS	9	16	15	22	23	23	21	21	17	17	14	13	10	221
		Total	80	105	114	122	141	139	112	115	141	119	128	144	130	1590
	County Totals	CPS	169	195	222	218	246	265	218	196	263	251	268	266	266	3043
		CWS	27	38	41	49	56	46	36	41	41	38	36	28	30	507
		Total	196	233	263	267	302	311	254	237	304	289	304	294	296	3550
MORRIS	Morris East	CPS	70	48	53	64	77	89	68	64	74	58	82	62	75	884
		CWS	15	16	13	12	24	9	8	10	8	9	14	14	11	163
		Total	85	64	66	76	101	98	76	74	82	67	96	76	86	1047
	Morris West	CPS	34	58	75	53	87	80	75	66	90	65	89	78	70	920
		CWS	5	15	11	21	14	20	13	8	10	7	13	14	6	157
		Total	39	73	86	74	101	100	88	74	100	72	102	92	76	1077
	County Totals	CPS	104	106	128	117	164	169	143	130	164	123	171	140	145	1804
		CWS	20	31	24	33	38	29	21	18	18	16	27	28	17	320
		Total	124	137	152	150	202	198	164	148	182	139	198	168	162	2124
OCEAN	Ocean North	CPS	133	121	147	121	147	150	126	129	166	139	167	171	182	1899
		CWS	17	18	24	20	36	22	20	32	17	20	34	31	19	310
		Total	150	139	171	141	183	172	146	161	183	159	201	202	201	2209
	Ocean South	CPS	95	113	142	112	132	130	124	110	119	109	176	161	176	1699
		CWS	12	12	23	25	34	17	24	19	19	23	17	26	19	270
		Total	107	125	165	137	166	147	148	129	138	132	193	187	195	1969
	County Totals	CPS	228	234	289	233	279	280	250	239	285	248	343	332	358	3598
		CWS	29	30	47	45	70	39	44	51	36	43	51	57	38	580
		Total	257	264	336	278	349	319	294	290	321	291	394	389	396	4178
PASSAIC	Passaic Central	CPS	87	102	102	86	124	134	118	92	134	102	134	135	158	1508
		CWS	24	25	18	22	30	28	12	13	33	21	26	15	26	293
		Total	111	127	120	108	154	162	130	105	167	123	160	150	184	1801
	Passaic North	CPS	84	70	123	108	137	123	107	104	134	102	124	150	142	1508
		CWS	18	22	24	34	30	27	18	16	27	18	26	26	20	306
		Total	102	92	147	142	167	150	125	120	161	120	150	176	162	1814
	County Totals	CPS	171	172	225	194	261	257	225	196	268	204	258	285	300	3016
		CWS	42	47	42	56	60	55	30	29	60	39	52	41	46	599
		Total	213	219	267	250	321	312	255	225	328	243	310	326	346	3615
SALEM	Salem	CPS	37	40	45	39	44	56	60	48	62	56	72	67	63	689
		CWS	7	13	11	9	12	12	7	5	9	8	11	9	13	126
		Total	44	53	56	48	56	68	67	53	71	64	83	76	76	815
	County Totals	CPS	37	40	45	39	44	56	60	48	62	56	72	67	63	689
		CWS	7	13	11	9	12	12	7	5	9	8	11	9	13	126
		Total	44	53	56	48	56	68	67	53	71	64	83	76	76	815
SOMERSET	Somerset	CPS	78	69	98	84	117	116	109	94	101	104	119	127	125	1341
		CWS	14	13	16	17	38	14	14	12	13	16	11	12	28	218
		Total	92	82	114	101	155	130	123	106	114	120	130	139	153	1559
	County Totals	CPS	78	69	98	84	117	116	109	94	101	104	119	127	125	1341
		CWS	14	13	16	17	38	14	14	12	13	16	11	12	28	218
Total	92	82	114	101	155	130	123	106	114	120	130	139	153	1559		

Data in this report is preliminary and may differ from any final report. This report is produced to ensure continuous quality improvement throughout DCF.



Table 5: Monthly Count of CPS Reports and CWS Referrals Assigned to CP&P Local Offices

County	Local Office	Type of Referral														Total
			May 2020	Jun 2020	Jul 2020	Aug 2020	Sep 2020	Oct 2020	Nov 2020	Dec 2020	Jan 2021	Feb 2021	Mar 2021	Apr 2021	May 2021	
SUSSEX	Sussex	CPS	38	45	75	59	70	76	64	41	54	66	93	86	70	837
		CWS	10	6	11	14	22	25	10	5	9	7	10	9	8	146
		Total	48	51	86	73	92	101	74	46	63	73	103	95	78	983
	County Totals	CPS	38	45	75	59	70	76	64	41	54	66	93	86	70	837
		CWS	10	6	11	14	22	25	10	5	9	7	10	9	8	146
		Total	48	51	86	73	92	101	74	46	63	73	103	95	78	983
UNION	Union Central	CPS	44	41	56	56	66	72	48	67	63	57	68	67	88	793
		CWS	6	10	8	11	13	14	11	7	15	10	25	14	17	161
		Total	50	51	64	67	79	86	59	74	78	67	93	81	105	954
	Union East	CPS	44	50	46	84	66	52	51	57	72	73	66	61	88	810
		CWS	4	15	7	16	16	19	10	10	19	5	15	15	18	169
		Total	48	65	53	100	82	71	61	67	91	78	81	76	106	979
	Union West	CPS	44	52	54	52	75	80	58	58	69	65	79	80	101	867
		CWS	5	22	10	6	25	16	11	11	18	8	18	23	9	182
		Total	49	74	64	58	100	96	69	69	87	73	97	103	110	1049
	County Totals	CPS	132	143	156	192	207	204	157	182	204	195	213	208	277	2470
		CWS	15	47	25	33	54	49	32	28	52	23	58	52	44	512
		Total	147	190	181	225	261	253	189	210	256	218	271	260	321	2982
WARREN	Warren	CPS	43	40	64	66	70	85	59	57	84	57	83	64	87	859
		CWS	7	16	11	11	16	13	8	9	9	13	19	9	17	158
		Total	50	56	75	77	86	98	67	66	93	70	102	73	104	1017
	County Totals	CPS	43	40	64	66	70	85	59	57	84	57	83	64	87	859
		CWS	7	16	11	11	16	13	8	9	9	13	19	9	17	158
		Total	50	56	75	77	86	98	67	66	93	70	102	73	104	1017
County CPS Referral Total		CPS	2,797	2,948	3,514	3,432	4,017	4,133	3,435	3,412	3,871	3,645	4,475	4,248	4,686	48,613
County CWS Referral Total		CWS	531	630	732	737	970	821	622	641	762	619	782	711	690	9,248
County Referral Total		Total	3,328	3,578	4,246	4,169	4,987	4,954	4,057	4,053	4,633	4,264	5,257	4,959	5,376	57,861
Central Region IAIU		CPS	6	23	17	17	26	23	23	13	28	20	30	20	41	287
		CWS	0	0	0	0	0	0	0	0	0	0	0	0	0	0
		Total	6	23	17	17	26	23	23	13	28	20	30	20	41	287
Metro Region IAIU		CPS	11	2	13	13	8	14	16	11	12	11	22	14	18	165
		CWS	0	0	0	0	0	0	0	0	0	0	0	0	0	0
		Total	11	2	13	13	8	14	16	11	12	11	22	14	18	165
Northern Region IAIU		CPS	12	10	14	12	11	10	11	8	18	14	22	20	28	190
		CWS	0	0	0	0	0	0	0	0	0	0	1	0	0	1
		Total	12	10	14	12	11	10	11	8	18	14	23	20	28	191
Southern Region IAIU		CPS	18	20	23	30	25	28	23	26	33	34	46	35	48	389
		CWS	0	0	0	0	0	0	0	0	0	0	0	0	0	0
		Total	18	20	23	30	25	28	23	26	33	34	46	35	48	389
IAIU CPS Subtotal		CPS	47	55	67	72	70	75	73	58	91	79	120	89	135	1,031
IAIU CWS Subtotal		CWS	0	0	0	0	0	0	0	0	0	1	0	0	1	
IAIU Subtotal		Total	47	55	67	72	70	75	73	58	91	79	121	89	135	1,032
County and IAIU CPS Subtotal		CPS	2,844	3,003	3,581	3,504	4,087	4,208	3,508	3,470	3,962	3,724	4,595	4,337	4,821	49,644
County and IAIU CWS Subtotal		CWS	531	630	732	737	970	821	622	641	762	619	783	711	690	9,249
Unable to Determine(1)		Total	59	48	51	149	126	93	103	85	85	79	108	98	94	1,178
Other Offices		Total	0	0	2	1	0	3	1	2	3	0	1	2	1	16
Grand Total		Total	3,434	3,681	4,366	4,391	5,183	5,125	4,234	4,198	4,812	4,422	5,487	5,148	5,606	60,087

(1) CPS Reports or CWS Referrals not assigned to an office through the Assignment Designee, but were assigned to an office for an assessment or investigation.