



NEW JERSEY DEPARTMENT OF
CHILDREN AND FAMILIES

Child Protection and Permanency

Monthly Screening and Investigation Report May 2023

Christine Norbut Beyer, MSW
Commissioner



Table of Contents

Table 1: NJ State Central Registry Activity: Monthly Child Abuse and Neglect Hotline Calls, Intakes and Assignments to Child Protection & Permanency (CP&P) Offices

Chart 1: CP&P Annual Trends in Child Protection Services (CPS) Reports and Child Welfare Services (CWS) Referrals

Table 2: Assignments to CP&P Offices: CPS Reports and CWS Referrals

Table 3: Source of CPS Reports and CWS Referrals

Table 4: Monthly Count of CPS Reports and CWS Referrals Assigned to Counties

Table 5: Monthly Count of CPS Reports and CWS Referrals Assigned to CP&P Local Offices

Table 1: NJ State Central Registry Activity: Monthly Child Abuse and Neglect Hotline Calls, Intakes and Assignments to CP&P Offices^{1,2,7}

2022-2023	Hotline Call Activity				Intakes Recorded in NJ SPIRIT ^{6,8}														Assignments to CP&P Offices				
	Total Calls to SCR ³	Abandon Calls ⁴	Average Time to Answer (seconds)	Resulting NJS Intakes ⁵	CPS Reports		CWS Referrals		No Action Required (NAR)		Related Information (RI)		Information & Referral (I&R)		Information Only (IO)		Unusual Incident (UIRS)		CPS Reports		CWS Referrals		Total
					n	%	n	%	n	%	n	%	n	%	n	%	n	%	n	%	n	%	
May 2022	13,609	1,526	201	13,433	5,228	38.9%	644	4.8%	177	1.3%	2,804	20.9%	2,967	22.1%	1,604	11.9%	9	0.1%	5,228	89.0%	647	11.0%	5,875
June 2022	13,105	1,997	325	12,478	4,854	38.9%	597	4.8%	196	1.6%	2,678	21.5%	2,580	20.7%	1,569	12.6%	4	0.0%	4,854	89.0%	598	11.0%	5,452
July 2022	11,225	1,022	164	11,445	4,277	37.4%	590	5.2%	155	1.4%	2,712	23.7%	1,956	17.1%	1,749	15.3%	6	0.1%	4,277	87.9%	590	12.1%	4,867
August 2022	10,651	841	101	16,623	4,103	24.7%	589	3.5%	164	1.0%	2,465	14.8%	4,070	24.5%	5,202	31.3%	30	0.2%	4,103	87.4%	589	12.6%	4,692
September 2022	12,502	1,199	129	12,828	4,810	37.5%	681	5.3%	178	1.4%	2,818	22.0%	2,724	21.2%	1,614	12.6%	3	0.0%	4,810	87.6%	680	12.4%	5,490
October 2022	13,496	1,226	142	16,804	5,356	31.9%	724	4.3%	178	1.1%	3,153	18.8%	4,212	25.1%	3,160	18.8%	21	0.1%	5,356	88.1%	725	11.9%	6,081
November 2022	12,599	1,217	156	12,974	4,852	37.4%	762	5.9%	189	1.5%	2,998	23.1%	2,658	20.5%	1,509	11.6%	6	0.0%	4,852	86.4%	762	13.6%	5,614
December 2022	11,707	673	88	12,589	4,560	36.2%	730	5.8%	125	1.0%	2,922	23.2%	2,471	19.6%	1,579	12.5%	2	0.0%	4,760	86.7%	731	13.3%	5,491
January 2023	14,498	168	188	12,390	5,215	35.8%	962	4.9%	173	1.3%	3,234	20.7%	3,011	22.1%	1,609	15.2%	2	0.1%	5,463	90.3%	962	14.5%	6,425
February 2023	13,385	1,497	162	13,589	4,921	49.2%	893	6.6%	143	1.1%	3,234	23.8%	2,923	21.5%	1,473	10.8%	2	0.0%	5,141	85.2%	891	14.8%	6,032
March 2023				13,768	5,774	41.9%	1,119	8.1%	188	1.4%	3,173	23.0%	1,692	12.3%	1,817	13.2%	5	0.0%	5,774	83.8%	1,119	16.2%	6,893
April 2023				13,291	5,001	37.6%	870	6.5%	197	1.5%	3,068	23.1%	2,423	18.2%	1,728	13.0%	4	0.0%	5,001	85.2%	870	14.8%	5,871
May 2023				15,225	5,732	37.6%	1,053	6.9%	167	1.1%	3,347	22.0%	2,998	19.69%	1,921	12.6%	7	0.0%	5,732	84.5%	1,053	15.5%	6,785
				13,649	4,976	36.5%	786	5.8%	172	1.3%	2,970	21.8%	2,822	20.7%	2,041	15.0%	8	0.1%	4,976	89.3%	786	14.1%	5,761
Overall Total	9,752	874		177,437	64,683		10,214		2,230		38,606		36,685		26,534		101		65,351	86.5%	10,217	13.5%	75,568

¹Comes from three distinct sources: (1) the Automatic Call Distribution (ACD) phone system; which keeps a count of the number of calls and call routing; (2) Monthly NJSpirit Intakes; which record decision making on calls received by hotline screeners, and (3) NJSpirit

²The number of Intakes, CPS Reports, and CWS Referrals are based on an extract from NJSpirit.

Data extracted by the Office of Research, Evaluation, and Reporting on **June 08, 2023** includes all Intakes, CPS Reports, and CWS Referrals received from **May 01, 2023** through **May 31, 2023**.

³The number calls received through the ACD System that were directed to a screener from any call-in phone number.

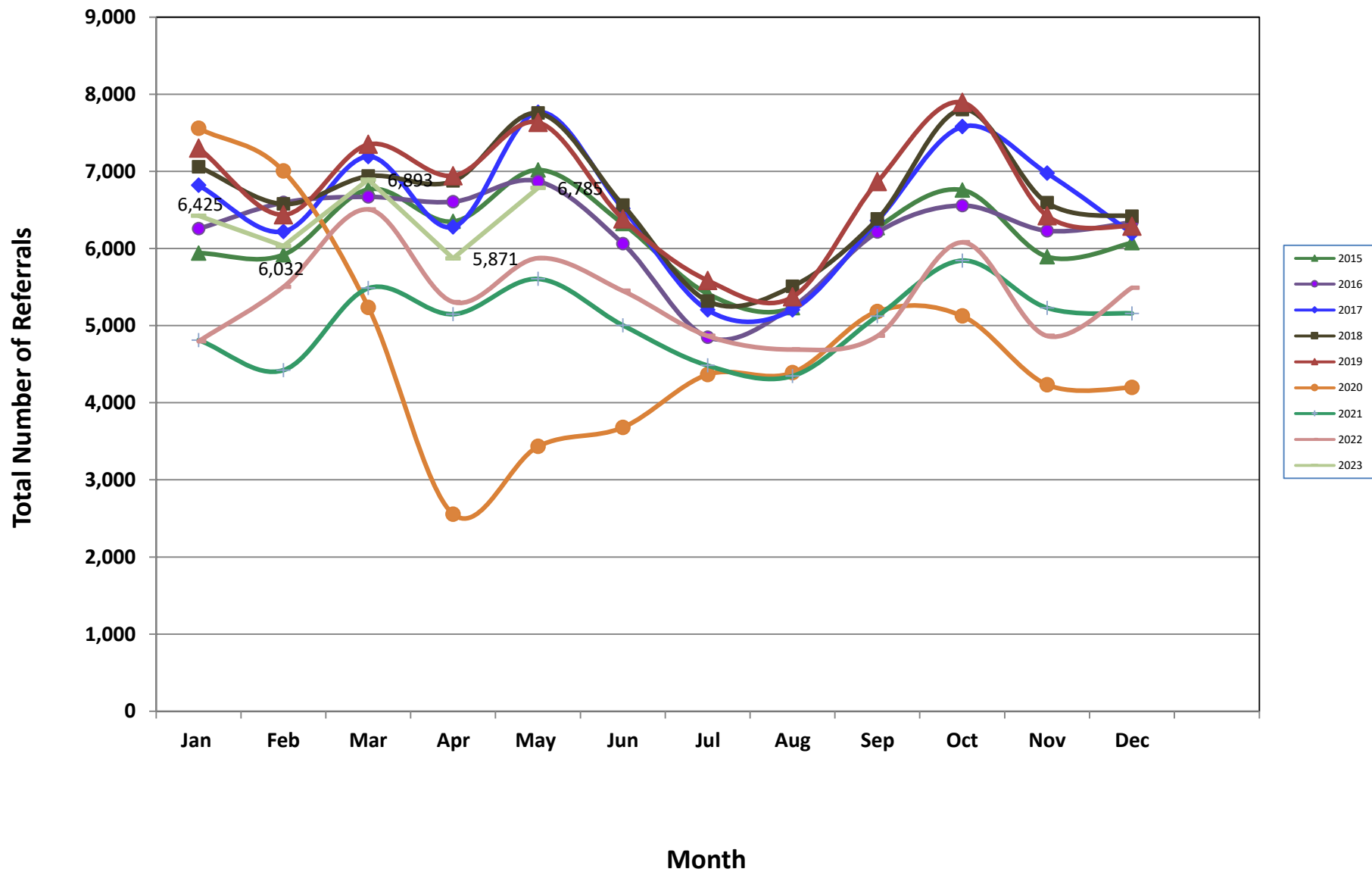
⁴The number of calls received through the ACD System that are abandoned either while waiting in queue or while ringing.

⁵The number of Intakes entered in NJSpirit from the number of calls received.

⁶The number of Intakes recorded in NJSpirit, by type of Intake. There is not a one-to-one relationship between an ACD call and an Intake; multiple calls to State Central Registry (SCR) may result in a single Intake, or one call may result in multiple Intakes.

⁷Intake: The process of documenting: a report of alleged abuse or neglect of a child (CPS); a request for services on behalf of a child, or a referral of a child for services (CWS); a call in which the caller provides additional or clarifying information about a current service

CP&P Annual Trends in CPS Reports and CWS Referrals



Data in this report is preliminary and may differ from any final report. This report is produced to ensure continuous quality improvement throughout DCF.

Table 2: Assignments to CP&P Offices: CPS Reports and CWS Referrals¹

Intake Date ³		CPS Reports ²	CWS Referrals ²	Total Assignments ²
2018	Jan 2018	5,276	1,784	7,060
	Feb 2018	4,933	1,644	6,577
	Mar 2018	5,212	1,727	6,939
	Apr 2018	5,275	1,601	6,876
	May 2018	5,920	1,836	7,756
	Jun 2018	4,948	1,615	6,563
	Jul 2018	4,011	1,308	5,319
	Aug 2018	4,102	1,408	5,510
	Sep 2018	4,748	1,634	6,382
	Oct 2018	5,790	2,011	7,801
	Nov 2018	4,973	1,620	6,593
	Dec 2018	4,891	1,527	6,418
	Total	60,079	19,715	79,794
2019	Jan 2019	5,443	1,858	7,301
	Feb 2019	4,811	1,628	6,439
	Mar 2019	5,677	1,824	7,501
	Apr 2019	5,313	1,630	6,943
	May 2019	5,853	1,781	7,634
	Jun 2019	4,874	1,509	6,383
	Jul 2019	4,277	1,309	5,586
	Aug 2019	4,068	1,306	5,374
	Sep 2019	5,315	1,551	6,866
	Oct 2019	5,968	1,926	7,894
	Nov 2019	4,991	1,432	6,423
	Dec 2019	4,855	1,434	6,289
	Total	61,445	19,188	80,633
2020	Jan 2020	5,715	1,842	7,557
	Feb 2020	5,380	1,624	7,004
	Mar 2020	4,172	1,065	5,237
	Apr 2020	2,149	407	2,556
	May 2020	2,897	537	3,434
	Jun 2020	3,045	636	3,681
	Jul 2020	3,628	738	4,366
	Aug 2020	3,569	822	4,391
	Sep 2020	4,153	1,030	5,183
	Oct 2020	4,257	868	5,125
	Nov 2020	3,564	670	4,234
	Dec 2020	3,517	681	4,198
	Total	46,046	10,920	56,966

Table 2: Assignments to CP&P Offices: CPS Reports and CWS Referrals¹

Intake Date ³		CPS Reports ²	CWS Referrals ²	Total Assignments ²
2021	Jan 2021	4,018	794	4,812
	Feb 2021	3,767	655	4,422
	Mar 2021	4,657	830	5,487
	Apr 2021	4,398	750	5,148
	May 2021	4,870	736	5,606
	Jun 2021	4,412	592	5,004
	Jul 2021	3,914	570	4,484
	Aug 2021	3,866	482	4,348
	Sep 2021	4,559	564	5,123
	Oct 2021	5,213	630	5,843
	Nov 2021	4,689	541	5,230
	Dec 2021	4,601	557	5,158
	Total	52,964	7,701	60,665
2022	Jan 2022	4,274	523	4,797
	Feb 2022	4,867	635	5,502
	Mar 2022	5,780	727	6,507
	Apr 2022	4,669	636	5,305
	May 2022	5,228	647	5,875
	Jun 2022	4,854	598	5,452
	Jul 2022	4,277	590	4,867
	Aug 2022	4,103	589	4,692
	Sep 2022	4,810	680	5,490
	Oct 2022	5,356	725	6,081
	Nov 2022	4,852	762	5,614
	Dec 2022	4,760	731	5,491
	Total	57,830	7,843	65,673
2023	Jan 2023	5,461	962	6,423
	Feb 2023	5,141	891	6,032
	Mar 2023	5,774	1,119	6,893
	Apr 2023	5,001	870	5,871
	May 2023	5,732	1,053	6,785
Total	27,109	4,895	32,004	
Grand Total		305,473	70,262	375,735

¹Source of Data: NJ SPIRIT

²A CPS Report or a CWS Referral may include multiple children in a family, with one or more allegation or request for services. In these cases, each CPS Report or CWS Referral is counted once - the CPS Report or the CWS Referral is the unit of analysis rather than the child.

³Prior to January 2014, the number of CPS Reports and CWS Referrals was based on the type of assignment of the CPS Report or CWS Referral. Beginning in January 2014, the number of CPS Reports and CWS Referrals is based on the number of CPS Reports and CWS Referrals received.

Table 3: Source of CPS Reports and CWS Referrals

	Source	May 2022	Jun 2022	Jul 2022	Aug 2022	Sep 2022	Oct 2022	Nov 2022	Dec 2022	Jan 2023	Feb 2023	Mar 2023	Apr 2023	May 2023		13 Month Total	
CPS Reports and CWS Referrals	School Staff	1,456	929	162	91	1,130	1,602	1,394	1,302	1,809	1,776	2,267	1,242	1,923	27%	15,160	22%
	Healthcare Provider	763	786	787	777	747	843	825	836	843	865	970	893	916	13%	9,935	14%
	Law Enforcement	1,513	1,549	1,624	1,617	1,421	1,514	1,422	1,416	1,525	1,391	1,548	1,566	1,820	26%	18,106	26%
	Government Agency	233	262	276	260	243	258	240	231	298	273	309	261	316	4%	3,144	5%
	Parent	383	399	420	413	421	426	342	383	419	351	442	439	460	7%	4,838	7%
	Relative/Friend/Neighbor	344	318	380	346	337	296	313	291	304	267	338	331	413	6%	3,865	6%
	Anonymous	527	493	437	458	502	480	458	416	489	435	529	435	452	6%	5,659	8%
	CP&P	42	53	53	46	57	49	45	42	58	60	76	57	64	1%	638	1%
	Court/Legal	116	136	144	147	139	135	113	122	135	121	172	114	145	2%	1,594	2%
	Community Group/Individual	201	205	235	211	180	158	165	163	217	209	184	171	187	3%	2,299	3%
	Facility Staff (incl Correctional Facility)	62	59	59	52	35	44	45	43	50	38	51	65	71	1%	603	1%
	Child (Self)	18	28	30	34	33	21	25	24	42	30	31	31	42	1%	347	1%
	Other	194	222	241	216	224	233	199	208	210	190	240	246	208	3%	2,623	4%
	Daycare/Babysitter	23	13	19	24	21	22	28	14	26	26	28	20	18	0%	264	0%
Total		5,875	5,452	4,867	4,692	5,490	6,081	5,614	5,491	6,425	6,032	7,185	5,871	7,035		69,075	

Table 4: Monthly Count of CPS Reports and CWS Referrals Assigned to Counties

County														Average Number of Assignments Last 13 Months	Feb 22 to Feb 23 Numerical Difference
	May 2022	Jun 2022	Jul 2022	Aug 2022	Sep 2022	Oct 2022	Nov 2022	Dec 2022	Jan 2023	Feb 2023	Mar 2023	Apr 2023	May 2023		
Atlantic	250	233	197	217	236	256	197	243	281	222	289	255	296	244	41
Bergen	327	349	305	276	315	356	350	344	407	398	439	321	418	354	97
Burlington	300	292	284	240	305	314	332	288	335	300	348	301	340	306	39
Camden	474	422	385	415	511	499	472	461	486	481	578	483	556	479	73
Cape May	68	69	76	78	80	81	69	63	74	67	78	73	92	74	19
Cumberland	206	182	180	166	174	195	183	185	215	171	214	191	226	191	35
Essex	581	517	477	497	528	590	562	547	636	612	731	568	739	583	171
Gloucester	218	206	211	190	222	221	248	235	264	233	273	225	286	233	61
Hudson	409	327	323	242	356	352	342	370	408	388	513	384	451	374	67
Hunterdon	38	56	29	32	52	54	49	39	53	41	48	37	47	44	10
Mercer	258	229	239	232	236	294	240	227	245	287	335	277	286	260	9
Middlesex	432	404	283	308	409	436	422	406	504	454	562	389	526	426	137
Monmouth	332	286	236	266	289	317	317	277	323	321	350	294	348	304	54
Morris	216	205	165	171	190	230	179	195	239	221	233	203	224	205	21
Ocean	372	375	340	320	356	391	352	341	382	350	484	388	450	377	62
Passaic	385	350	295	264	323	396	326	348	420	385	435	405	510	372	105
Salem	81	53	62	67	70	60	64	73	83	65	75	75	81	70	6
Somerset	142	132	113	92	130	174	137	133	171	173	180	146	174	146	28
Sussex	95	95	73	69	87	114	103	85	115	87	135	135	129	102	-6
Union	332	310	281	259	265	353	301	293	346	370	397	328	404	326	76
Warren	86	85	73	78	100	91	80	81	108	100	106	111	113	93	2
County Subtotals	5,602	5,177	4,627	4,479	5,234	5,774	5,325	5,234	6,095	5,726	6,803	5,589	6,696	5,566	1,107
Central Region IAIU	60	32	38	35	47	50	56	47	53	55	77	64	89	54	25
Metro Region IAIU	41	41	22	23	34	54	33	25	45	44	57	32	67	40	35
Northern Region IAIU	52	40	32	33	42	50	50	56	58	39	69	63	81	51	18
Southern Region IAIU	48	56	56	27	50	69	50	53	81	77	72	66	84	61	18
IAIU Subtotals	201	169	148	118	173	223	189	181	237	215	275	225	321	206	96
¹ Unable to Determine	72	103	90	93	80	84	99	75	91	89	105	102	107	92	5
Other Offices	0	3	2	2	3	0	1	1	2	2	2	7	3	2	-4
Grand Total	5,875	5,452	4,867	4,692	5,490	6,081	5,614	5,491	6,425	6,032	7,185	5,923	7,127	5,866	1,204

¹CPS Reports or CWS Referrals not assigned to an office through the Assignment Designee, but were assigned to an office for an assessment or investigation.



Table 5: Monthly Count of CPS Reports and CWS Referrals Assigned to CP&P Local Offices

County	Local Office	Type of Referral	2022													Total
			May 2022	Jun 2022	Jul 2022	Aug 2022	Sep 2022	Oct 2022	Nov 2022	Dec 2022	Jan 2023	Feb 2023	Mar 2023	Apr 2023	May 2023	
ATLANTIC	Atlantic East	CPS	116	117	88	100	106	106	90	111	114	105	114	110	130	1,407
		CWS	15	19	21	22	15	15	20	20	28	22	35	23	26	281
		Total	131	136	109	122	121	121	110	131	142	127	149	133	156	1,688
	Atlantic West	CPS	107	85	74	84	107	113	75	92	112	85	123	100	126	1,283
		CWS	12	12	14	11	8	22	12	20	27	10	17	22	14	201
		Total	119	97	88	95	115	135	87	112	139	95	140	122	140	1,484
	County Totals	CPS	223	202	162	184	213	219	165	203	226	190	237	210	256	2,690
		CWS	27	31	35	33	23	37	32	40	55	32	52	45	40	482
		Total	250	233	197	217	236	256	197	243	281	222	289	255	296	3,172
BERGEN	Bergen Central	CPS	119	142	108	82	117	137	145	126	143	149	153	116	139	1,676
		CWS	13	7	14	27	17	19	21	25	20	21	28	19	24	255
		Total	132	149	122	109	134	156	166	151	163	170	181	135	163	1,931
	Bergen South	CPS	179	176	160	142	156	176	159	168	214	194	215	151	215	2,305
		CWS	16	24	23	25	25	24	25	25	30	34	43	35	40	369
		Total	195	200	183	167	181	200	184	193	244	228	258	186	255	2,674
	County Totals	CPS	298	318	268	224	273	313	304	294	357	343	368	267	354	3,981
		CWS	29	31	37	52	42	43	46	50	50	55	71	54	64	624
		Total	327	349	305	276	315	356	350	344	407	398	439	321	418	4,605
BURLINGTON	Burlington East	CPS	134	133	115	96	130	136	133	117	146	126	142	115	150	1,673
		CWS	15	21	16	22	26	19	20	25	32	22	28	34	20	300
		Total	149	154	131	118	156	155	153	142	178	148	170	149	170	1,973
	Burlington West	CPS	129	123	134	106	125	132	154	122	128	129	146	135	146	1,709
		CWS	22	15	19	16	24	27	25	24	29	23	32	17	24	297
		Total	151	138	153	122	149	159	179	146	157	152	178	152	170	2,006
	County Totals	CPS	263	256	249	202	255	268	287	239	274	255	288	250	296	3,382
		CWS	37	36	35	38	50	46	45	49	61	45	60	51	44	597
		Total	300	292	284	240	305	314	332	288	335	300	348	301	340	3,979
CAMDEN	Camden Central	CPS	112	99	95	112	124	136	97	97	116	107	141	96	123	1,455
		CWS	17	21	13	20	22	20	15	21	18	19	22	26	22	256
		Total	129	120	108	132	146	156	112	118	134	126	163	122	145	1,711
	Camden East	CPS	94	98	84	68	111	93	121	96	110	102	105	106	124	1,312
		CWS	16	20	8	9	17	20	16	15	12	27	19	16	16	211
		Total	110	118	92	77	128	113	137	111	122	129	124	122	140	1,523
	Camden North	CPS	85	71	73	86	110	109	87	101	89	98	118	108	101	1,236
		CWS	21	12	18	14	12	16	32	20	19	25	33	16	17	255
		Total	106	83	91	100	122	125	119	121	108	123	151	124	118	1,491
	Camden South	CPS	122	88	81	92	102	93	86	92	103	92	114	94	122	1,281
		CWS	7	13	13	14	13	12	18	19	19	11	26	21	31	217
		Total	129	101	94	106	115	105	104	111	122	103	140	115	153	1,498
	County Totals	CPS	413	356	333	358	447	431	391	386	418	399	478	404	470	5,284
		CWS	61	66	52	57	64	68	81	75	68	82	100	79	86	939
		Total	474	422	385	415	511	499	472	461	486	481	578	483	556	6,223
CAPE MAY	Cape May	CPS	58	61	68	66	67	71	63	55	66	55	65	57	73	825
		CWS	10	8	8	12	13	10	6	8	8	12	13	16	19	143
		Total	68	69	76	78	80	81	69	63	74	67	78	73	92	968
	County Totals	CPS	58	61	68	66	67	71	63	55	66	55	65	57	73	825
		CWS	10	8	8	12	13	10	6	8	8	12	13	16	19	143
Total	68	69	76	78	80	81	69	63	74	67	78	73	92	968		
CUMBERLAND	Cumberland East	CPS	65	65	62	66	56	82	78	61	87	62	65	58	78	885
		CWS	12	11	10	12	13	5	3	13	17	15	16	9	18	154
		Total	77	76	72	78	69	87	81	74	104	77	81	67	96	1,039
	Cumberland West	CPS	115	94	92	78	93	91	95	98	99	81	111	103	120	1,270
		CWS	14	12	16	10	12	17	7	13	12	13	22	21	10	179
		Total	129	106	108	88	105	108	102	111	111	94	133	124	130	1,449
	County Totals	CPS	180	159	154	144	149	173	173	159	186	143	176	161	198	2,155
CWS		26	23	26	22	25	22	10	26	29	28	38	30	28	333	
Total		206	182	180	166	174	195	183	185	215	171	214	191	226	2,488	

Data in this report is preliminary and may differ from any final report. This report is produced to ensure continuous quality improvement throughout DCF.



Table 5: Monthly Count of CPS Reports and CWS Referrals Assigned to CP&P Local Offices

County	Local Office	Type of Referral	2022													Total
			May 2022	Jun 2022	Jul 2022	Aug 2022	Sep 2022	Oct 2022	Nov 2022	Dec 2022	Jan 2023	Feb 2023	Mar 2023	Apr 2023	May 2023	
ESSEX	Essex Central	CPS	83	77	73	79	85	89	70	73	69	71	88	68	85	1,010
		CWS	10	9	8	9	10	12	19	16	13	16	21	10	30	183
		Total	93	86	81	88	95	101	89	89	82	87	109	78	115	1,193
	Essex North	CPS	91	90	71	60	86	92	85	104	101	118	119	94	122	1,233
		CWS	11	6	13	5	8	16	13	15	18	17	16	16	26	180
		Total	102	96	84	65	94	108	98	119	119	135	135	110	148	1,413
	Essex South	CPS	106	86	77	83	66	90	87	93	99	84	105	84	97	1157
		CWS	17	9	12	9	11	19	12	7	23	14	37	24	15	209
		Total	123	95	89	92	77	109	99	100	122	98	142	108	112	1366
	Newark Center City	CPS	88	67	65	73	74	93	77	69	77	71	83	75	95	1007
		CWS	9	10	9	10	8	14	13	12	13	13	17	9	26	163
		Total	97	77	74	83	82	107	90	81	90	84	100	84	121	1170
	Newark Northeast	CPS	72	63	61	74	79	77	82	68	90	89	95	91	109	1050
		CWS	6	7	10	11	14	8	16	14	23	18	21	9	23	180
		Total	78	70	71	85	93	85	98	82	113	107	116	100	132	1230
	Newark South	CPS	76	80	68	75	73	74	76	68	93	81	114	77	101	1056
		CWS	12	13	10	9	14	6	12	8	17	20	15	11	10	157
		Total	88	93	78	84	87	80	88	76	110	101	129	88	111	1213
	County Totals	CPS	516	463	415	444	463	515	477	475	529	514	604	489	609	6513
		CWS	65	54	62	53	65	75	85	72	107	98	127	79	130	1072
		Total	581	517	477	497	528	590	562	547	636	612	731	568	739	7585
GLOUCESTER	Gloucester East	CPS	88	81	90	78	74	75	100	97	102	77	113	84	87	1146
		CWS	9	13	13	11	15	10	14	21	16	12	19	15	16	184
		Total	97	94	103	89	89	85	114	118	118	89	132	99	103	1330
	Gloucester West	CPS	109	98	101	85	110	114	114	99	125	123	121	116	150	1465
		CWS	12	14	7	16	23	22	20	18	21	21	20	10	33	237
		Total	121	112	108	101	133	136	134	117	146	144	141	126	183	1702
	County Totals	CPS	197	179	191	163	184	189	214	196	227	200	234	200	237	2611
CWS		21	27	20	27	38	32	34	39	37	33	39	25	49	421	
Total		218	206	211	190	222	221	248	235	264	233	273	225	286	3032	
HUDSON	Hudson Central	CPS	131	82	90	75	93	82	89	85	95	104	113	105	121	1265
		CWS	10	14	10	9	11	15	20	19	13	19	23	20	22	205
		Total	141	96	100	84	104	97	109	104	108	123	136	125	143	1470
	Hudson North	CPS	74	70	69	48	86	88	69	80	86	81	100	85	106	1042
		CWS	10	6	9	6	15	5	9	7	20	18	24	13	15	157
		Total	84	76	78	54	101	93	78	87	106	99	124	98	121	1199
	Hudson South	CPS	80	74	61	40	70	59	53	70	80	60	107	55	71	880
		CWS	14	8	10	8	7	14	12	10	16	12	22	5	13	151
		Total	94	82	71	48	77	73	65	80	96	72	129	60	84	1031
	Hudson West	CPS	84	66	67	47	65	80	76	82	80	78	105	79	91	1000
		CWS	6	7	7	9	9	9	14	17	18	16	19	22	12	165
		Total	90	73	74	56	74	89	90	99	98	94	124	101	103	1165
	County Totals	CPS	369	292	287	210	314	309	287	317	341	323	425	324	389	4187
		CWS	40	35	36	32	42	43	55	53	67	65	88	60	62	678
		Total	409	327	323	242	356	352	342	370	408	388	513	384	451	4865
HUNTERDON	Hunterdon	CPS	34	50	25	27	49	50	40	35	46	36	41	32	41	506
		CWS	4	6	4	5	3	4	9	4	7	5	7	5	6	69
		Total	38	56	29	32	52	54	49	39	53	41	48	37	47	575
	County Totals	CPS	34	50	25	27	49	50	40	35	46	36	41	32	41	506
		CWS	4	6	4	5	3	4	9	4	7	5	7	5	6	69
Total	38	56	29	32	52	54	49	39	53	41	48	37	47	575		
MERCER	Mercer North	CPS	131	111	103	103	122	130	108	106	101	124	119	121	140	1519
		CWS	12	15	19	14	10	11	23	17	15	27	15	27	24	229
		Total	143	126	122	117	132	141	131	123	116	151	134	148	164	1748
	Mercer South	CPS	96	93	104	99	90	129	98	96	106	113	172	108	101	1405
		CWS	19	10	13	16	14	24	11	8	23	23	29	21	21	232
		Total	115	103	117	115	104	153	109	104	129	136	201	129	122	1637
	County Totals	CPS	227	204	207	202	212	259	206	202	207	237	291	229	241	2924
CWS		31	25	32	30	24	35	34	25	38	50	44	48	45	461	
Total		258	229	239	232	236	294	240	227	245	287	335	277	286	3385	

Data in this report is preliminary and may differ from any final report. This report is produced to ensure continuous quality improvement throughout DCF.



Table 5: Monthly Count of CPS Reports and CWS Referrals Assigned to CP&P Local Offices

County	Local Office	Type of Referral														Total
			May 2022	Jun 2022	Jul 2022	Aug 2022	Sep 2022	Oct 2022	Nov 2022	Dec 2022	Jan 2023	Feb 2023	Mar 2023	Apr 2023	May 2023	
MIDDLESEX	Middlesex Central	CPS	107	117	64	79	100	109	91	102	119	135	150	107	134	1414
		CWS	14	12	7	2	17	21	15	11	20	15	29	14	30	207
		Total	121	129	71	81	117	130	106	113	139	150	179	121	164	1621
	Middlesex Coastal	CPS	137	127	106	116	137	139	153	139	167	130	160	117	163	1791
		CWS	13	13	14	12	19	14	16	13	30	23	24	15	27	233
		Total	150	140	120	128	156	153	169	152	197	153	184	132	190	2024
	Middlesex West	CPS	147	121	83	89	114	135	131	120	136	134	165	116	136	1627
		CWS	14	14	9	10	22	18	16	21	32	17	34	20	36	263
		Total	161	135	92	99	136	153	147	141	168	151	199	136	172	1890
	County Totals	CPS	391	365	253	284	351	383	375	361	422	399	475	340	433	4832
		CWS	41	39	30	24	58	53	47	45	82	55	87	49	93	703
		Total	432	404	283	308	409	436	422	406	504	454	562	389	526	5535
MONMOUTH	Monmouth North	CPS	172	134	123	123	142	187	158	143	154	160	167	131	173	1967
		CWS	22	5	13	23	11	15	24	17	26	27	26	24	23	256
		Total	194	139	136	146	153	202	182	160	180	187	193	155	196	2223
	Monmouth South	CPS	126	136	88	110	112	106	119	102	113	112	138	114	134	1510
		CWS	12	11	12	10	24	9	16	15	30	22	19	25	18	223
		Total	138	147	100	120	136	115	135	117	143	134	157	139	152	1733
	County Totals	CPS	298	270	211	233	254	293	277	245	267	272	305	245	307	3477
		CWS	34	16	25	33	35	24	40	32	56	49	45	49	41	479
		Total	332	286	236	266	289	317	317	277	323	321	350	294	348	3956
MORRIS	Morris East	CPS	85	85	67	70	82	99	88	83	92	78	83	81	90	1083
		CWS	7	12	9	7	5	10	13	13	17	16	22	14	10	155
		Total	92	97	76	77	87	109	101	96	109	94	105	95	100	1238
	Morris West	CPS	112	99	82	84	95	102	68	89	111	100	104	86	103	1235
		CWS	12	9	7	10	8	19	10	10	19	27	24	22	21	198
		Total	124	108	89	94	103	121	78	99	130	127	128	108	124	1433
	County Totals	CPS	197	184	149	154	177	201	156	172	203	178	187	167	193	2318
		CWS	19	21	16	17	13	29	23	23	36	43	46	36	31	353
		Total	216	205	165	171	190	230	179	195	239	221	233	203	224	2671
OCEAN	Ocean North	CPS	172	172	161	139	163	190	161	165	156	177	220	177	184	2237
		CWS	23	18	13	18	17	21	28	15	33	23	38	20	40	307
		Total	195	190	174	157	180	211	189	180	189	200	258	197	224	2544
	Ocean South	CPS	153	173	145	147	163	163	148	141	170	136	204	160	195	2098
		CWS	24	12	21	16	13	17	15	20	23	14	22	31	31	259
		Total	177	185	166	163	176	180	163	161	193	150	226	191	226	2357
	County Totals	CPS	325	345	306	286	326	353	309	306	326	313	424	337	379	4335
		CWS	47	30	34	34	30	38	43	35	56	37	60	51	71	566
		Total	372	375	340	320	356	391	352	341	382	350	484	388	450	4901
PASSAIC	Passaic Central	CPS	177	164	127	115	157	161	140	148	165	156	180	186	223	2099
		CWS	18	14	5	10	21	24	25	25	26	26	44	27	41	306
		Total	195	178	132	125	178	185	165	173	191	182	224	213	264	2405
	Passaic North	CPS	166	157	143	124	126	187	135	157	192	172	181	165	206	2111
		CWS	24	15	20	15	19	24	26	18	37	31	30	27	40	326
		Total	190	172	163	139	145	211	161	175	229	203	211	192	246	2437
	County Totals	CPS	343	321	270	239	283	348	275	305	357	328	361	351	429	4210
		CWS	42	29	25	25	40	48	51	43	63	57	74	54	81	632
		Total	385	350	295	264	323	396	326	348	420	385	435	405	510	4842
SALEM	Salem	CPS	72	46	51	62	61	53	56	67	68	60	61	55	67	779
		CWS	9	7	11	5	9	7	8	6	15	5	14	13	14	123
		Total	81	53	62	67	70	60	64	73	83	65	75	68	81	902
	County Totals	CPS	72	46	51	62	61	53	56	67	68	60	61	55	67	779
		CWS	9	7	11	5	9	7	8	6	15	5	14	13	14	123
		Total	81	53	62	67	70	60	64	73	83	65	75	68	81	902
SOMERSET	Somerset	CPS	132	119	102	81	116	152	124	123	150	146	151	127	145	1668
		CWS	10	13	11	11	14	22	13	10	21	27	29	19	29	229
		Total	142	132	113	92	130	174	137	133	171	173	180	146	174	1897
	County Totals	CPS	132	119	102	81	116	152	124	123	150	146	151	127	145	1668
		CWS	10	13	11	11	14	22	13	10	21	27	29	19	29	229
Total	142	132	113	92	130	174	137	133	171	173	180	146	174	1897		

Data in this report is preliminary and may differ from any final report. This report is produced to ensure continuous quality improvement throughout DCF.



Table 5: Monthly Count of CPS Reports and CWS Referrals Assigned to CP&P Local Offices

County	Local Office	Type of Referral														Total
			May 2022	Jun 2022	Jul 2022	Aug 2022	Sep 2022	Oct 2022	Nov 2022	Dec 2022	Jan 2023	Feb 2023	Mar 2023	Apr 2023	May 2023	
SUSSEX	Sussex	CPS	85	77	65	64	78	100	89	75	97	70	117	71	110	1098
		CWS	10	18	8	5	9	14	14	10	18	17	18	19	19	179
		Total	95	95	73	69	87	114	103	85	115	87	135	90	129	1277
	County Totals	CPS	85	77	65	64	78	100	89	75	97	70	117	71	110	1098
		CWS	10	18	8	5	9	14	14	10	18	17	18	19	19	179
		Total	95	95	73	69	87	114	103	85	115	87	135	90	129	1277
UNION	Union Central	CPS	88	97	88	74	72	118	89	88	107	101	108	92	118	1240
		CWS	15	10	10	9	8	11	12	13	19	20	17	14	19	177
		Total	103	107	98	83	80	129	101	101	126	121	125	106	137	1417
	Union East	CPS	96	88	90	78	69	95	80	66	95	104	109	90	119	1179
		CWS	13	19	11	13	14	10	12	7	12	21	22	10	12	176
		Total	109	107	101	91	83	105	92	73	107	125	131	100	131	1355
	Union West	CPS	105	89	71	76	87	105	90	96	103	107	122	106	115	1272
		CWS	15	7	11	9	15	14	18	23	10	17	19	16	21	195
		Total	120	96	82	85	102	119	108	119	113	124	141	122	136	1467
	County Totals	CPS	289	274	249	228	228	318	259	250	305	312	339	288	352	3691
		CWS	43	36	32	31	37	35	42	43	41	58	58	40	52	548
		Total	332	310	281	259	265	353	301	293	346	370	397	328	404	4239
WARREN	Warren	CPS	77	78	70	68	88	86	72	69	93	92	84	96	92	1065
		CWS	9	7	3	10	12	5	8	12	15	8	22	15	21	147
		Total	86	85	73	78	100	91	80	81	108	100	106	111	113	1212
	County Totals	CPS	77	78	70	68	88	86	72	69	93	92	84	96	92	1065
		CWS	9	7	3	10	12	5	8	12	15	8	22	15	21	147
		Total	86	85	73	78	100	91	80	81	108	100	106	111	113	1212
County CPS Referral Total		CPS	4,987	4,619	4,085	3,923	4,588	5,084	4,599	4,534	5,165	4,865	5,711	4,700	5,671	62,531
County CWS Referral Total		CWS	615	558	542	556	646	690	726	700	930	861	1,092	837	1,025	9,778
County Referral Total		Total	5,602	5,177	4,627	4,479	5,234	5,774	5,325	5,234	6,095	5,726	6,803	5,537	6,696	72,309
Central Region IAIU	CPS	60	32	38	35	47	50	56	47	53	55	77	64	89	703	
	CWS	0	0	0	0	0	0	0	0	0	0	0	0	0	0	
	Total	60	32	38	35	47	50	56	47	53	55	77	64	89	703	
Metro Region IAIU	CPS	41	41	22	23	34	54	33	25	45	44	57	32	67	518	
	CWS	0	0	0	0	0	0	0	0	0	0	0	0	0	0	
	Total	41	41	22	23	34	54	33	25	45	44	57	32	67	518	
Northern Region IAIU	CPS	52	40	32	33	42	50	50	56	58	39	69	63	81	665	
	CWS	0	0	0	0	0	0	0	0	0	0	0	0	0	0	
	Total	52	40	32	33	42	50	50	56	58	39	69	63	81	665	
Southern Region IAIU	CPS	48	56	56	27	50	69	50	53	81	77	72	66	84	789	
	CWS	0	0	0	0	0	0	0	0	0	0	0	0	0	0	
	Total	48	56	56	27	50	69	50	53	81	77	72	66	84	789	
IAIU CPS Subtotal		CPS	201	169	148	118	173	223	189	181	237	215	275	225	321	2,675
IAIU CWS Subtotal		CWS	0	0	0	0	0	0	0	0	0	0	0	0	0	0
IAIU Subtotal		Total	201	169	148	118	173	223	189	181	237	215	275	225	321	2,675
County and IAIU CPS Subtotal		CPS	5,188	4,788	4,233	4,041	4,761	5,307	4,788	4,715	5,402	5,080	5,986	4,925	5,992	65,206
County and IAIU CWS Subtotal		CWS	615	558	542	556	646	690	726	700	930	861	1,092	837	1,025	9,778
Unable to Determine(1)		Total	72	103	90	93	80	84	99	75	91	89	105	102	107	1,190
Other Offices		Total	0	3	2	2	3	0	1	1	2	2	2	7	3	28
Grand Total		Total	5,875	5,452	4,867	4,692	5,490	6,081	5,614	5,491	6,425	6,032	7,185	5,871	7,127	76,202

(1) CPS Reports or CWS Referrals not assigned to an office through the Assignment Designee, but were assigned to an office for an assessment or investigation.