



Child Protection and Permanency

Monthly Screening and Investigation Report May 2024

Christine Norbut Beyer, MSW
Commissioner



NEW JERSEY DEPARTMENT OF
CHILDREN AND FAMILIES

Table of Contents

Table 1: NJ State Central Registry Activity: Monthly Child Abuse and Neglect Hotline Calls, Intakes and Assignments to Child Protection & Permanency (CP&P) Offices

Chart 1: CP&P Annual Trends in Child Protection Services (CPS) Reports and Child Welfare Services (CWS) Referrals

Table 2: Assignments to CP&P Offices: CPS Reports and CWS Referrals

Table 3: Source of CPS Reports and CWS Referrals

Table 4: Monthly Count of CPS Reports and CWS Referrals Assigned to Counties

Table 5: Monthly Count of CPS Reports and CWS Referrals Assigned to CP&P Local Offices

Table 1: NJ State Central Registry Activity: Monthly Child Abuse and Neglect Hotline Calls, Intakes and Assignments to CP&P Offices^{1,2,7}

2023-2024	Hotline Call Activity				Intakes Recorded in NJ SPIRIT ^{6,8}														Assignments to CP&P Offices				
	Total Calls to SCR ³	Abandon Calls ⁴	Average Time to Answer (seconds)	Resulting NJS Intakes ⁵	CPS Reports		CWS Referrals		No Action Required (NAR)		Related Information (RI)		Information & Referral (I&R)		Information Only (IO)		Unusual Incident (UIRS)		CPS Reports		CWS Referrals		Total
					n	%	n	%	n	%	n	%	n	%	n	%	n	%	n	%	n	%	
May 2023	14,992	1,368	112	15,567	6,074	39.0%	1,053	6.8%	167	1.1%	3,347	21.5%	2,998	19.3%	1,921	12.3%	7	0.0%	6,074	85.2%	1,053	14.8%	7,127
June 2023	12,861	1,069	115	13,488	4,999	37.1%	955	7.1%	155	1.1%	3,075	22.8%	2,522	18.7%	1,778	13.2%	4	0.0%	4,999	84.0%	955	16.0%	5,954
July 2023	11,377	732	90	12,196	4,576	37.5%	834	6.8%	201	1.6%	2,828	23.2%	1,996	16.4%	1,758	14.4%	3	0.0%	4,576	84.6%	834	15.4%	5,410
August 2023	11,208	536	62	12,127	4,484	37.0%	978	8.1%	229	1.9%	2,656	21.9%	2,081	17.2%	1,692	14.0%	7	0.1%	4,484	82.0%	981	18.0%	5,465
September 2023	12,809	612	49	13,859	5,034	36.3%	1,000	7.2%	199	1.4%	3,166	22.8%	2,720	19.6%	1,739	12.5%	1	0.0%	5,034	83.4%	1,000	16.6%	6,034
October 2023	14,337	619	45	15,546	5,837	37.5%	1,131	7.3%	215	1.4%	3,454	22.2%	2,974	19.1%	1,935	12.4%	0	0.0%	5,837	83.8%	1,131	16.2%	6,968
November 2023	13,338	704	50	14,269	5,195	36.4%	934	6.5%	158	1.1%	3,214	22.5%	2,469	17.3%	2,297	16.1%	2	0.0%	5,195	84.8%	934	15.2%	6,129
December 2023	12,144	705	80	12,968	4,913	37.9%	967	7.5%	136	1.0%	2,939	22.7%	2,438	18.8%	1,572	12.1%	3	0.0%	4,913	83.6%	967	16.4%	5,880
January 2024	13,611	959	83	14,437	5,268	36.5%	1,108	7.7%	210	1.5%	3,339	23.1%	2,809	19.5%	1,703	11.8%	0	0.0%	5,268	82.6%	1,108	17.4%	6,376
February 2024	13,854	1,086	100	14,452	5,260	36.4%	1,082	7.5%	158	1.1%	3,241	22.4%	3,044	21.1%	1,665	11.5%	2	0.0%	5,257	82.9%	1,082	17.1%	6,339
March 2024	14,126	1,230	115	14,694	5,390	36.7%	1,082	7.4%	149	1.0%	3,279	22.3%	3,061	20.8%	1,723	11.7%	10	0.1%	5,296	83.0%	1,082	17.0%	6,378
April 2024	13,711	1,221	106	14,246	5,332	37.4%	1,066	7.5%	177	1.2%	2,967	20.8%	2,939	20.6%	1,762	12.4%	3	0.0%	5,262	83.6%	1,029	16.4%	6,291
May 2024	15,356	1,601	154	15,758	6,005	38.1%	1,089	6.9%	181	1.1%	3,369	21.4%	3,294	20.9%	1,810	11.5%	10	0.1%	5,998	84.7%	1,081	15.3%	7,079
<i>Averages</i>	13,363	957		14,124	5,259	37.2%	1,021	7.2%	180	1.3%	3,144	22.3%	2,719	19.3%	1,797	12.7%	4	0.0%	5,246	83.7%	1,018	16.3%	6,264
Overall Totals	173,724	12,442		183,607	68,367	37.2%	13,279	7.2%	2,335	1.3%	40,874	22.3%	35,345	19.3%	23,355	12.7%	52	0.0%	68,193	83.7%	13,237	16.3%	81,430

¹Comes from three distinct sources: (1) the Automatic Call Distribution (ACD) phone system; which keeps a count of the number of calls and call routing; (2) Monthly NJSpirit Intakes; which record decision making on calls received by hotline screeners, and (3) NJSpirit

²The number of Intakes, CPS Reports, and CWS Referrals are based on an extract from NJSpirit.

Data extracted by the Office of Research, Evaluation, and Reporting on **June 10, 2024** includes all Intakes, CPS Reports, and CWS Referrals received from **May 01, 2024 through May 31, 2024**.

³The number calls received through the ACD System that were directed to a screener from any call-in phone number.

⁴The number of calls received through the ACD System that are abandoned either while waiting in queue or while ringing.

⁵The number of Intakes entered in NJSpirit from the number of calls received.

⁶The number of Intakes recorded in NJSpirit, by type of Intake. There is not a one-to-one relationship between an ACD call and an Intake; multiple calls to State Central Registry (SCR) may result in a single Intake, or one call may result in multiple Intakes.

⁷Intake: The process of documenting: a report of alleged abuse or neglect of a child (CPS); a request for services on behalf of a child, or a referral of a child for services (CWS); a call in which the caller provides additional or clarifying information about a current service case or active investigation (RI); informing a caller of, or referring a caller to, services available from other private or public sources (I&R); a call that requires no action by CP&P (NAR); or a response to a simple inquiry (IO).

CP&P Annual Trends in CPS Reports and CWS Referrals

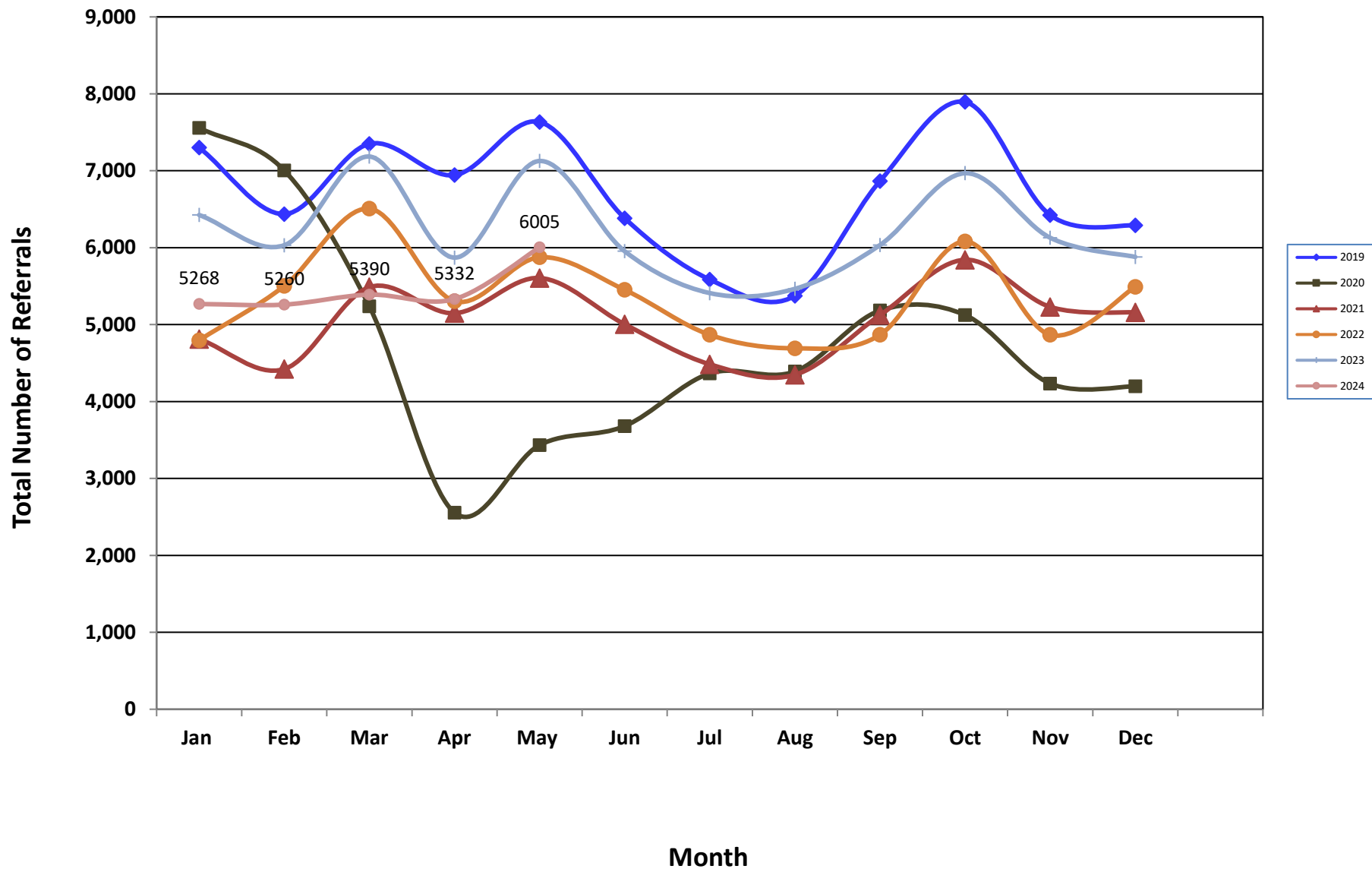


Table 2: Assignments to CP&P Offices: CPS Reports and CWS Referrals¹

Intake Date ³		CPS Reports ²	CWS Referrals ²	Total Assignments ²
2018	Jan 2018	5,276	1,784	7,060
	Feb 2018	4,933	1,644	6,577
	Mar 2018	5,212	1,727	6,939
	Apr 2018	5,275	1,601	6,876
	May 2018	5,920	1,836	7,756
	Jun 2018	4,948	1,615	6,563
	Jul 2018	4,011	1,308	5,319
	Aug 2018	4,102	1,408	5,510
	Sep 2018	4,748	1,634	6,382
	Oct 2018	5,790	2,011	7,801
	Nov 2018	4,973	1,620	6,593
	Dec 2018	4,891	1,527	6,418
	Total	60,079	19,715	79,794
2019	Jan 2019	5,443	1,858	7,301
	Feb 2019	4,811	1,628	6,439
	Mar 2019	5,677	1,824	7,501
	Apr 2019	5,313	1,630	6,943
	May 2019	5,853	1,781	7,634
	Jun 2019	4,874	1,509	6,383
	Jul 2019	4,277	1,309	5,586
	Aug 2019	4,068	1,306	5,374
	Sep 2019	5,315	1,551	6,866
	Oct 2019	5,968	1,926	7,894
	Nov 2019	4,991	1,432	6,423
	Dec 2019	4,855	1,434	6,289
	Total	61,445	19,188	80,633
2020	Jan 2020	5,715	1,842	7,557
	Feb 2020	5,380	1,624	7,004
	Mar 2020	4,172	1,065	5,237
	Apr 2020	2,149	407	2,556
	May 2020	2,897	537	3,434
	Jun 2020	3,045	636	3,681
	Jul 2020	3,628	738	4,366
	Aug 2020	3,569	822	4,391
	Sep 2020	4,153	1,030	5,183
	Oct 2020	4,257	868	5,125
	Nov 2020	3,564	670	4,234
	Dec 2020	3,517	681	4,198
	Total	46,046	10,920	56,966

Table 2: Assignments to CP&P Offices: CPS Reports and CWS Referrals¹

Intake Date ³		CPS Reports ²	CWS Referrals ²	Total Assignments ²
2021	Jan 2021	4,018	794	4,812
	Feb 2021	3,767	655	4,422
	Mar 2021	4,657	830	5,487
	Apr 2021	4,398	750	5,148
	May 2021	4,870	736	5,606
	Jun 2021	4,412	592	5,004
	Jul 2021	3,914	570	4,484
	Aug 2021	3,866	482	4,348
	Sep 2021	4,559	564	5,123
	Oct 2021	5,213	630	5,843
	Nov 2021	4,689	541	5,230
	Dec 2021	4,601	557	5,158
	Total	52,964	7,701	60,665
2022	Jan 2022	4,274	523	4,797
	Feb 2022	4,867	635	5,502
	Mar 2022	5,780	727	6,507
	Apr 2022	4,669	636	5,305
	May 2022	5,228	647	5,875
	Jun 2022	4,854	598	5,452
	Jul 2022	4,277	590	4,867
	Aug 2022	4,103	589	4,692
	Sep 2022	4,810	680	5,490
	Oct 2022	5,356	725	6,081
	Nov 2022	4,852	762	5,614
	Dec 2022	4,760	731	5,491
	Total	57,830	7,843	65,673
2023	Jan 2023	5,461	962	6,423
	Feb 2023	5,141	891	6,032
	Mar 2023	6,064	1,121	7,185
	Apr 2023	5,001	870	5,871
	May 2023	6,074	1,053	7,127
	Jun 2023	4,999	955	5,954
	Jul 2023	4,576	834	5,410
	Aug 2023	4,484	981	5,465
	Sep 2023	5,034	1,000	6,034
	Oct 2023	5,837	1,131	6,968
	Nov 2023	5,195	934	6,129
	Dec 2023	4,913	967	5,880
	Total	62,779	11,699	74,478
	Jan 2024	5,268	1,108	6,376
	Feb 2024	5,260	1,082	6,342
	Mar 2024	5,390	1,082	6,472
	Apr 2024	5,332	1,066	6,398

2024	May 2024	6,005	1,089	7,094
	Jun 2024			
	Jul 2024			
	Aug 2024			
	Sep 2024			
	Oct 2024			
	Nov 2024			
	Dec 2024			
	Total	27,255	5,427	32,682
Grand Total		368,398	82,493	450,891

¹Source of Data: NJ SPIRIT

²A CPS Report or a CWS Referral may include multiple children in a family, with one or more allegation or request for services. In these cases, each CPS Report or CWS Referral is counted once - the CPS Report or the CWS Referral is the unit of analysis rather than the child.

³Prior to January 2014, the number of CPS Reports and CWS Referrals was based on the type of assignment of the CPS Report or CWS Referral. Beginning in January 2014, the number of CPS Reports and CWS Referrals is based on the number of CPS Reports and CWS Referrals received.

Table 3: Source of CPS Reports and CWS Referrals

	Source	May 2023	Jun 2023	Jul 2023	Aug 2023	Sep 2023	Oct 2023	Nov 2023	Dec 2023	Jan 2024	Feb 2024	Mar 2024	Apr 2024	May 2024		13 Month Total	
CPS Reports and CWS Referrals	School Staff	1,923	885	246	136	1,203	1,990	1,596	1,494	1,704	1,837	1,881	1,605	1,914	27%	18,414	23%
	Healthcare Provider	916	910	884	940	793	868	785	806	907	858	897	921	902	13%	11,387	14%
	Law Enforcement	1,820	1,782	1,928	1,775	1,737	1,744	1,573	1,654	1,602	1,598	1,665	1,687	1,860	26%	22,425	27%
	Government Agency	316	310	294	392	343	295	305	284	316	282	249	314	323	5%	4,023	5%
	Parent	460	459	435	540	488	485	447	399	428	402	405	437	490	7%	5,875	7%
	Relative/Friend/Neighbor	413	376	377	410	343	348	300	344	296	308	293	323	336	5%	4,467	5%
	Anonymous	544	476	452	431	471	530	440	458	394	423	487	445	533	8%	6,084	7%
	CP&P	64	67	62	68	69	59	54	67	57	56	56	58	65	1%	802	1%
	Court/Legal	145	140	116	144	109	120	99	121	90	114	116	148	139	2%	1,601	2%
	Community Group/Individual	187	218	229	233	180	199	189	167	144	169	145	153	187	3%	2,400	3%
	Facility Staff (incl Correctional Facility)	71	56	59	67	49	49	45	59	47	47	45	59	48	1%	701	1%
	Child (Self)	42	36	28	33	37	38	38	20	18	24	24	30	33	0%	401	0%
	Other	208	223	271	275	182	222	232	167	183	202	182	188	227	3%	2,762	3%
	Daycare/Babysitter	18	16	29	21	30	21	26	16	14	22	27	30	32	0%	302	0%
Total		7,127	5,954	5,410	5,465	6,034	6,968	6,129	6,056	6,200	6,342	6,472	6,398	7,089		81,644	

Table 4: Monthly Count of CPS Reports and CWS Referrals Assigned to Counties

County														Average Number of Assignments Last 13 Months	Numerical Difference
	May 2023	Jun 2023	Jul 2023	Aug 2023	Sep 2023	Oct 2023	Nov 2023	Dec 2023	Jan 2024	Feb 2024	Mar 2024	Apr 2024	May 2024		
Atlantic	296	258	265	232	258	333	273	263	247	262	243	317	328	275	11
Bergen	418	357	305	312	339	430	400	374	455	360	337	364	437	376	73
Burlington	340	285	273	305	310	374	333	282	288	300	306	333	361	315	28
Camden	556	502	449	463	487	535	513	449	513	493	449	491	537	495	46
Cape May	92	71	61	64	71	71	64	71	63	63	64	74	72	69	-2
Cumberland	226	208	179	208	174	207	211	199	223	207	230	214	226	209	12
Essex	739	566	530	569	639	692	584	585	644	653	681	628	716	633	88
Gloucester	286	239	232	246	244	298	238	246	242	255	238	244	260	251	16
Hudson	451	386	337	345	406	436	395	336	391	471	470	391	462	406	71
Hunterdon	47	46	60	38	38	53	47	42	44	63	47	50	54	48	4
Mercer	286	249	252	264	261	368	256	306	274	308	328	306	346	293	40
Middlesex	526	420	376	398	436	466	429	434	489	466	502	489	477	454	-12
Monmouth	348	308	307	271	279	362	295	291	350	304	331	349	341	318	-8
Morris	224	219	201	166	219	226	242	202	250	237	262	226	247	225	21
Ocean	450	400	344	357	402	405	409	378	402	379	381	374	423	393	49
Passaic	510	425	313	320	422	462	374	383	401	379	390	390	479	404	89
Salem	81	58	68	58	63	84	65	66	69	83	75	67	84	71	17
Somerset	174	152	116	119	147	176	126	140	148	145	156	133	174	147	41
Sussex	129	108	100	97	95	104	93	105	105	101	98	119	113	105	-6
Union	404	322	296	292	302	360	343	314	330	349	394	350	394	342	44
Warren	113	89	95	92	94	88	104	87	113	103	108	97	136	101	39
County Subtotals	6,696	5,668	5,159	5,216	5,686	6,530	5,794	5,553	6,041	5,981	6,090	6,006	6,667	5,930	661
Central Region IAIU	89	57	49	58	47	82	60	80	71	70	86	68	66	68	-2
Metro Region IAIU	67	43	32	32	58	86	68	61	59	58	82	57	86	61	29
Northern Region IAIU	81	33	29	20	59	71	50	50	41	59	55	51	61	51	10
Southern Region IAIU	84	62	59	66	79	86	71	69	80	89	81	74	118	78	44
IAIU Subtotals	321	195	169	176	243	325	249	260	251	276	304	250	331	258	82
¹ Unable to Determine	107	89	81	73	105	109	86	62	81	82	77	105	86	88	-19
Other Offices	3	2	1	0	0	4	0	5	3	3	1	0	5	2	5
Grand Total	7,127	5,954	5,410	5,465	6,034	6,968	6,129	5,880	6,376	6,342	6,472	6,361	7,089	6,277	729

¹CPS Reports or CWS Referrals not assigned to an office through the Assignment Designee, but were assigned to an office for an assessment or investigation.

Table 5: Monthly Count of CPS Reports and CWS Referrals Assigned to CP&P Local Offices

County	Local Office	Type of Referral	May 2023	Jun 2023	Jul 2023	Aug 2023	Sep 2023	Oct 2023	Nov 2023	Dec 2023	Jan 2024	Feb 2024	Mar 2024	Apr 2024	May 2024	Total
ATLANTIC	Atlantic East	CPS	130	105	114	101	125	138	112	99	107	121	109	139	177	1,577
		CWS	26	24	28	27	26	41	33	26	33	25	29	41	24	383
		Total	156	129	142	128	151	179	145	125	140	146	138	180	201	1,960
	Atlantic West	CPS	126	106	102	81	87	126	112	123	84	96	91	116	104	1,354
		CWS	14	23	21	23	20	28	16	15	23	20	14	21	23	261
		Total	140	129	123	104	107	154	128	138	107	116	105	137	127	1,615
	County Totals	CPS	256	211	216	182	212	264	224	222	191	217	200	255	281	2,931
		CWS	40	47	49	50	46	69	49	41	56	45	43	62	47	644
		Total	296	258	265	232	258	333	273	263	247	262	243	317	328	3,575
BERGEN	Bergen Central	CPS	139	144	105	107	120	149	150	129	176	131	123	110	172	1,755
		CWS	24	27	14	15	33	22	29	27	40	28	31	28	28	346
		Total	163	171	119	122	153	171	179	156	216	159	154	138	200	2,101
	Bergen South	CPS	215	166	155	155	166	224	192	174	193	161	155	185	205	2,346
		CWS	40	20	31	35	20	35	29	44	46	40	28	41	32	441
		Total	255	186	186	190	186	259	221	218	239	201	183	226	237	2,787
	County Totals	CPS	354	310	260	262	286	373	342	303	369	292	278	295	377	4,101
		CWS	64	47	45	50	53	57	58	71	86	68	59	69	60	787
		Total	418	357	305	312	339	430	400	374	455	360	337	364	437	4,888
BURLINGTON	Burlington East	CPS	150	109	112	126	116	149	136	108	133	115	130	129	149	1,662
		CWS	20	26	26	19	24	29	30	34	19	28	31	28	37	351
		Total	170	135	138	145	140	178	166	142	152	143	161	157	186	2,013
	Burlington West	CPS	146	124	109	127	134	156	126	110	108	129	114	151	147	1,681
		CWS	24	26	26	33	36	40	41	30	28	28	31	25	28	396
		Total	170	150	135	160	170	196	167	140	136	157	145	176	175	2,077
	County Totals	CPS	296	233	221	253	250	305	262	218	241	244	244	280	296	3,343
		CWS	44	52	52	52	60	69	71	64	47	56	62	53	65	747
		Total	340	285	273	305	310	374	333	282	288	300	306	333	361	4,090
CAMDEN	Camden Central	CPS	123	118	102	112	98	110	106	89	94	105	102	100	118	1,377
		CWS	22	24	22	18	32	28	22	24	29	27	20	26	18	312
		Total	145	142	124	130	130	138	128	113	123	132	122	126	136	1,689
	Camden East	CPS	124	91	87	94	115	111	95	93	96	99	95	108	102	1,310
		CWS	16	19	29	18	25	20	12	31	36	31	15	22	29	303
		Total	140	110	116	112	140	131	107	124	132	130	110	130	131	1,613
	Camden North	CPS	101	110	76	92	95	107	114	98	105	111	95	94	118	1,316
		CWS	17	26	25	29	16	30	27	19	28	23	22	25	14	301
		Total	118	136	101	121	111	137	141	117	133	134	117	119	132	1,617
	Camden South	CPS	122	91	86	83	90	112	114	83	103	85	81	92	108	1,250
		CWS	31	23	22	17	16	17	23	12	22	12	19	24	30	268
		Total	153	114	108	100	106	129	137	95	125	97	100	116	138	1,518
	County Totals	CPS	470	410	351	381	398	440	429	363	398	400	373	394	446	5,253
		CWS	86	92	98	82	89	95	84	86	115	93	76	97	91	1,184
		Total	556	502	449	463	487	535	513	449	513	493	449	491	537	6,437
CAPE MAY	Cape May	CPS	73	52	55	53	56	62	56	59	53	48	52	66	57	742
		CWS	19	19	6	11	15	9	8	12	10	15	12	8	15	159
		Total	92	71	61	64	71	71	64	71	63	63	64	74	72	901
	County Totals	CPS	73	52	55	53	56	62	56	59	53	48	52	66	57	742
		CWS	19	19	6	11	15	9	8	12	10	15	12	8	15	159
Total	92	71	61	64	71	71	64	71	63	63	64	74	72	901		
CUMBERLAND	Cumberland East	CPS	78	62	71	85	58	78	72	53	75	68	72	81	97	950
		CWS	18	24	11	14	10	8	10	18	23	19	18	10	18	201
		Total	96	86	82	99	68	86	82	71	98	87	90	91	115	1,151
	Cumberland West	CPS	120	97	83	89	87	98	117	107	107	102	109	111	90	1,317
		CWS	10	26	14	20	19	23	12	21	18	18	31	12	21	245
		Total	130	123	97	109	106	121	129	128	125	120	140	123	111	1,562
	County Totals	CPS	198	159	154	174	145	176	189	160	182	170	181	192	187	2,267
		CWS	28	50	25	34	29	31	22	39	41	37	49	22	39	446
Total		226	209	179	208	174	207	211	199	223	207	230	214	226	2,713	

Table 5: Monthly Count of CPS Reports and CWS Referrals Assigned to CP&P Local Offices

County	Local Office	Type of Referral	May 2023	Jun 2023	Jul 2023	Aug 2023	Sep 2023	Oct 2023	Nov 2023	Dec 2023	Jan 2024	Feb 2024	Mar 2024	Apr 2024	May 2024	Total
ESSEX	Essex Central	CPS	85	53	63	70	86	78	64	57	82	71	70	66	70	915
		CWS	30	19	9	24	20	20	12	11	23	22	25	13	18	246
		Total	115	72	72	94	106	98	76	68	105	93	95	79	88	1,161
	Essex North	CPS	122	92	69	74	109	124	117	94	107	95	101	114	125	1,343
		CWS	26	24	11	16	24	21	20	11	12	25	28	15	21	254
		Total	148	116	80	90	133	145	137	105	119	120	129	129	146	1,597
	Essex South	CPS	97	84	94	75	77	101	78	83	91	93	97	91	110	1,171
		CWS	15	23	11	18	22	26	19	25	20	20	16	21	18	254
		Total	112	107	105	93	99	127	97	108	111	113	113	112	128	1,425
	Newark Center City	CPS	95	62	79	81	72	77	85	61	71	73	85	88	80	1,009
		CWS	26	13	11	22	22	13	18	21	13	23	20	19	26	247
		Total	121	75	90	103	94	90	103	82	84	96	105	107	106	1,256
	Newark Northeast	CPS	109	93	85	69	100	103	76	98	101	94	96	78	105	1,207
		CWS	23	20	15	18	15	25	16	34	24	23	35	25	21	294
		Total	132	113	100	87	115	128	92	132	125	117	131	103	126	1,501
	Newark South	CPS	101	74	68	75	73	89	66	76	84	92	95	72	105	1,070
		CWS	10	9	15	27	19	15	13	14	16	22	13	26	17	216
		Total	111	83	83	102	92	104	79	90	100	114	108	98	122	1,286
	County Totals	CPS	609	458	458	444	517	572	486	469	536	518	544	509	595	6,715
		CWS	130	108	72	125	122	120	98	116	108	135	137	119	121	1,511
		Total	739	566	530	569	639	692	584	585	644	653	681	628	716	8,226
GLOUCESTER	Gloucester East	CPS	87	93	79	91	84	117	89	83	98	93	81	91	100	1,186
		CWS	16	11	8	13	18	24	20	15	19	24	23	18	12	221
		Total	103	104	87	104	102	141	109	98	117	117	104	109	112	1,407
	Gloucester West	CPS	150	114	127	118	117	131	104	122	104	113	111	111	120	1,542
		CWS	33	21	18	24	25	26	25	26	21	25	23	24	28	319
		Total	183	135	145	142	142	157	129	148	125	138	134	135	148	1,861
	County Totals	CPS	237	207	206	209	201	248	193	205	202	206	192	202	220	2,728
CWS		49	32	26	37	43	50	45	41	40	49	46	42	40	540	
Total		286	239	232	246	244	298	238	246	242	255	238	244	260	3,268	
HUDSON	Hudson Central	CPS	121	106	71	75	92	98	94	80	79	105	111	79	98	1,209
		CWS	22	22	21	26	16	15	20	19	15	25	19	15	18	253
		Total	143	128	92	101	108	113	114	99	94	130	130	94	116	1,462
	Hudson North	CPS	106	77	76	59	87	93	77	78	87	112	95	91	97	1,135
		CWS	15	19	12	15	21	20	19	11	26	13	25	22	21	239
		Total	121	96	88	74	108	113	96	89	113	125	120	113	118	1,374
	Hudson South	CPS	71	67	72	71	83	76	85	60	75	90	90	84	97	1,021
		CWS	13	13	20	15	26	28	12	9	17	15	18	16	23	225
		Total	84	80	92	86	109	104	97	69	92	105	108	100	120	1,246
	Hudson West	CPS	91	67	58	70	65	86	71	60	75	97	87	71	90	988
		CWS	12	15	7	14	16	20	17	19	17	14	25	13	18	207
		Total	103	82	65	84	81	106	88	79	92	111	112	84	108	1,195
	County Totals	CPS	389	317	277	275	327	353	327	278	316	404	383	325	382	4,353
CWS		62	69	60	70	79	83	68	58	75	67	87	66	80	924	
Total		451	386	337	345	406	436	395	336	391	471	470	391	462	5,277	
HUNTERDON	Hunterdon	CPS	41	41	48	35	29	44	44	35	37	51	42	44	44	535
		CWS	6	5	12	3	9	9	3	7	7	12	5	6	10	94
		Total	47	46	60	38	38	53	47	42	44	63	47	50	54	629
	County Totals	CPS	41	41	48	35	29	44	44	35	37	51	42	44	44	535
		CWS	6	5	12	3	9	9	3	7	7	12	5	6	10	94
Total	47	46	60	38	38	53	47	42	44	63	47	50	54	629		
MERCER	Mercer North	CPS	140	116	111	105	126	146	113	129	122	116	147	132	152	1,655
		CWS	24	18	17	30	15	27	21	27	26	28	34	24	28	319
		Total	164	134	128	135	141	173	134	156	148	144	181	156	180	1,974
	Mercer South	CPS	101	97	112	101	93	154	96	121	108	133	132	125	144	1,517
		CWS	21	18	12	28	27	41	26	29	18	31	15	25	22	313
		Total	122	115	124	129	120	195	122	150	126	164	147	150	166	1,830
	County Totals	CPS	241	213	223	206	219	300	209	250	230	249	279	257	296	3,172
CWS		45	36	29	58	42	68	47	56	44	59	49	49	50	632	
Total		286	249	252	264	261	368	256	306	274	308	328	306	346	3,804	

Table 5: Monthly Count of CPS Reports and CWS Referrals Assigned to CP&P Local Offices

County	Local Office	Type of Referral													Total	
			May 2023	Jun 2023	Jul 2023	Aug 2023	Sep 2023	Oct 2023	Nov 2023	Dec 2023	Jan 2024	Feb 2024	Mar 2024	Apr 2024		May 2024
MIDDLESEX	Middlesex Central	CPS	134	100	85	90	120	99	107	90	111	120	121	135	129	1,441
		CWS	30	24	22	14	26	26	14	13	16	19	21	15	8	248
		Total	164	124	107	104	146	125	121	103	127	139	142	150	137	1,689
	Middlesex Coastal	CPS	163	143	121	124	119	129	136	131	148	150	141	139	134	1,778
		CWS	27	14	24	35	24	33	26	25	34	21	32	25	28	348
		Total	190	157	145	159	143	162	162	156	182	171	173	164	162	2,126
	Middlesex West	CPS	136	116	106	114	124	149	120	152	145	132	162	136	146	1,738
		CWS	36	23	18	21	23	30	26	23	35	24	25	39	32	355
		Total	172	139	124	135	147	179	146	175	180	156	187	175	178	2,093
	County Totals	CPS	433	359	312	328	363	377	363	373	404	402	424	410	409	4,957
CWS		93	61	64	70	73	89	66	61	85	64	78	79	68	951	
Total		526	420	376	398	436	466	429	434	489	466	502	489	477	5,908	
MONMOUTH	Monmouth North	CPS	173	123	150	121	149	161	142	137	174	153	171	169	160	1,983
		CWS	23	25	29	29	19	33	23	17	26	27	18	28	26	323
		Total	196	148	179	150	168	194	165	154	200	180	189	197	186	2,306
	Monmouth South	CPS	134	133	114	104	102	131	115	116	126	102	127	126	132	1,562
		CWS	18	27	14	17	9	37	15	21	24	22	15	26	23	268
		Total	152	160	128	121	111	168	130	137	150	124	142	152	155	1,830
	County Totals	CPS	307	256	264	225	251	292	257	253	300	255	298	295	292	3,545
		CWS	41	52	43	46	28	70	38	38	50	49	33	54	49	591
Total		348	308	307	271	279	362	295	291	350	304	331	349	341	4,136	
MORRIS	Morris East	CPS	90	88	87	65	100	91	101	89	92	95	103	86	95	1,182
		CWS	10	18	11	8	11	19	13	15	15	14	32	22	25	213
		Total	100	106	98	73	111	110	114	104	107	109	135	108	120	1,395
	Morris West	CPS	103	101	86	78	86	96	108	85	119	103	101	95	108	1,269
		CWS	21	12	17	15	22	20	20	13	24	25	26	23	19	257
		Total	124	113	103	93	108	116	128	98	143	128	127	118	127	1,526
	County Totals	CPS	193	189	173	143	186	187	209	174	211	198	204	181	203	2,451
		CWS	31	30	28	23	33	39	33	28	39	39	58	45	44	470
Total		224	219	201	166	219	226	242	202	250	237	262	226	247	2,921	
OCEAN	Ocean North	CPS	184	184	159	148	192	184	188	162	160	168	172	194	185	2,280
		CWS	40	23	27	29	23	31	24	25	30	25	33	33	35	378
		Total	224	207	186	177	215	215	212	187	190	193	205	227	220	2,658
	Ocean South	CPS	195	170	136	148	152	166	173	163	172	156	151	122	169	2,073
		CWS	31	23	22	32	35	24	24	28	40	30	25	25	34	373
		Total	226	193	158	180	187	190	197	191	212	186	176	147	203	2,446
	County Totals	CPS	379	354	295	296	344	350	361	325	332	324	323	316	354	4,353
		CWS	71	46	49	61	58	55	48	53	70	55	58	58	69	751
Total		450	400	344	357	402	405	409	378	402	379	381	374	423	5,104	
PASSAIC	Passaic Central	CPS	223	198	121	105	168	178	155	158	154	140	154	151	194	2,099
		CWS	41	34	29	35	32	33	34	31	43	30	35	45	39	461
		Total	264	232	150	140	200	211	189	189	197	170	189	196	233	2,560
	Passaic North	CPS	206	154	136	145	176	214	148	159	165	165	165	156	203	2,192
		CWS	40	39	27	35	46	37	37	35	39	44	36	38	43	496
		Total	246	193	163	180	222	251	185	194	204	209	201	194	246	2,688
	County Totals	CPS	429	352	257	250	344	392	303	317	319	305	319	307	397	4,291
		CWS	81	73	56	70	78	70	71	66	82	74	71	83	82	957
Total		510	425	313	320	422	462	374	383	401	379	390	390	479	5,248	
SALEM	Salem	CPS	67	50	53	50	55	72	54	59	58	68	56	57	70	769
		CWS	14	8	15	8	8	12	11	7	11	15	19	10	14	152
		Total	81	58	68	58	63	84	65	66	69	83	75	67	84	921
	County Totals	CPS	67	50	53	50	55	72	54	59	58	68	56	57	70	769
		CWS	14	8	15	8	8	12	11	7	11	15	19	10	14	152
		Total	81	58	68	58	63	84	65	66	69	83	75	67	84	921
SOMERSET	Somerset	CPS	145	133	104	97	124	160	112	120	130	127	131	110	153	1,646
		CWS	29	19	12	22	23	16	14	20	18	18	25	23	21	260
		Total	174	152	116	119	147	176	126	140	148	145	156	133	174	1,906
	County Totals	CPS	145	133	104	97	124	160	112	120	130	127	131	110	153	1,646
		Total	174	152	116	119	147	176	126	140	148	145	156	133	174	1,906



Table 5: Monthly Count of CPS Reports and CWS Referrals Assigned to CP&P Local Offices

County	Local Office	Type of Referral														Total
			May 2023	Jun 2023	Jul 2023	Aug 2023	Sep 2023	Oct 2023	Nov 2023	Dec 2023	Jan 2024	Feb 2024	Mar 2024	Apr 2024	May 2024	
SUSSEX	Sussex	CPS	110	88	93	82	73	88	82	85	80	80	83	99	95	1,138
		CWS	19	20	7	15	22	16	11	20	25	21	15	20	18	229
		Total	129	108	100	97	95	104	93	105	105	101	98	119	113	1,367
	County Totals	CPS	110	88	93	82	73	88	82	85	80	80	83	99	95	1,138
		CWS	19	20	7	15	22	16	11	20	25	21	15	20	18	229
		Total	129	108	100	97	95	104	93	105	105	101	98	119	113	1,367
UNION	Union Central	CPS	118	71	71	81	94	97	82	96	73	89	108	91	1,162	
		CWS	19	13	19	13	16	20	11	13	16	20	17	7	208	
		Total	137	84	90	94	110	117	93	109	89	109	125	98	115	1,370
	Union East	CPS	119	102	93	79	85	97	102	84	101	92	104	87	1,246	
		CWS	12	13	9	24	16	17	13	13	15	31	19	19	227	
		Total	131	115	102	103	101	114	115	97	116	123	123	106	127	1,473
	Union West	CPS	115	98	86	84	72	106	120	93	109	100	128	128	1,371	
		CWS	21	25	18	11	19	23	15	15	16	17	18	18	236	
		Total	136	123	104	95	91	129	135	108	125	117	146	146	152	1,607
	County Totals	CPS	352	271	250	244	251	300	304	273	283	281	340	306	3,779	
		CWS	52	51	46	48	51	60	39	41	47	68	54	44	671	
		Total	404	322	296	292	302	360	343	314	330	349	394	350	394	4,450
WARREN	Warren	CPS	92	82	80	76	86	72	76	74	95	86	88	1,108		
		CWS	21	7	15	16	8	16	28	13	18	17	20	20	211	
		Total	113	89	95	92	94	88	104	87	113	103	108	97	136	1,319
	County Totals	CPS	92	82	80	76	86	72	76	74	95	86	88	1,108		
		CWS	21	7	15	16	8	16	28	13	18	17	20	20	211	
		Total	113	89	95	92	94	88	104	87	113	103	108	97	136	1,319
County CPS Referral Total		CPS	5,671	4,745	4,350	4,265	4,717	5,427	4,882	4,615	4,967	4,925	5,034	4,977	5,602	64,177
County CWS Referral Total		CWS	1,025	924	809	951	969	1,103	912	938	1,074	1,056	1,056	1,029	1,065	12,911
County Referral Total		Total	6,696	5,669	5,159	5,216	5,686	6,530	5,794	5,553	6,041	5,981	6,090	6,006	6,667	77,088
Central Region IAIU	CPS	89	56	49	49	47	82	60	80	70	70	70	68	66	856	
	CWS	0	0	0	0	0	0	0	0	1	0	0	0	0	1	
	Total	89	56	49	49	47	82	60	80	71	70	70	68	66	857	
Metro Region IAIU	CPS	67	43	32	32	58	86	68	61	59	58	58	71	86	779	
	CWS	0	0	0	0	0	0	0	0	0	0	0	0	0	0	
	Total	67	43	32	32	58	86	68	61	59	58	58	71	86	779	
Northern Region IAIU	CPS	81	33	28	28	59	71	50	50	40	59	59	60	61	679	
	CWS	0	0	1	0	0	0	0	0	1	0	0	0	0	2	
	Total	81	33	29	28	59	71	50	50	41	59	59	60	61	681	
Southern Region IAIU	CPS	84	62	59	59	79	86	71	69	80	89	89	88	118	1,033	
	CWS	0	0	0	0	0	0	0	0	0	0	0	0	0	0	
	Total	84	62	59	59	79	86	71	69	80	89	89	88	118	1,033	
IAIU CPS Subtotal		CPS	321	194	168	168	243	325	249	260	249	276	276	287	3,347	
IAIU CWS Subtotal		CWS	0	0	1	0	0	0	0	2	0	0	0	0	3	
IAIU Subtotal		Total	321	194	169	168	243	325	249	260	251	276	276	287	3,350	
County and IAIU CPS Subtotal		CPS	5,992	4,939	4,518	4,433	4,960	5,752	5,131	4,875	5,216	5,201	5,310	5,264	67,524	
County and IAIU CWS Subtotal		CWS	1,025	924	810	951	969	1,103	912	938	1,076	1,056	1,056	1,029	12,914	
Unable to Determine(1)		Total	107	89	81	81	105	109	86	67	81	82	82	105	1,161	
Other Offices		Total	3	2	1	0	0	4	0	0	3	3	3	0	19	
Grand Total		Total	7,127	5,954	5,410	5,465	6,034	6,968	6,129	5,880	6,376	6,342	6,451	6,398	81,618	

⁽¹⁾CPS Reports or CWS Referrals not assigned to an office through the Assignment Designee, but were assigned to an office for an assessment or investigation.