



Child Protection and Permanency

Monthly Screening and Investigation Report June 2018

Christine Norbut Beyer, MSW
Commissioner

July 9, 2018



Table of Contents

Table 1: NJ State Central Registry Activity: Monthly Child Abuse and Neglect Hotline Calls, Intakes and Assignments to Child Protection & Permanency (CP&P) Offices

Chart 1: CP&P Annual Trends in Child Protection Services (CPS) Reports and Child Welfare Services (CWS) Referrals

Table 2: Assignments to CP&P Offices: CPS Reports and CWS Referrals

Table 3: Source of CPS Reports and CWS Referrals

Table 4: Monthly Count of CPS Reports and CWS Referrals Assigned to Counties

Table 5: Monthly Count of CPS Reports and CWS Referrals Assigned to CP&P Local Offices

Table 1: NJ State Central Registry Activity: Monthly Child Abuse and Neglect Hotline Calls, Intakes and Assignments to CP&P Offices^{1,2,7}

2017 - 2018	Hotline Call Activity				Intakes Recorded in NJ SPIRIT ^{6,8}												Assignments to CP&P Offices				
	Total Calls to SCR ³	Abandon Calls ⁴	Average Time to Answer (seconds)	Resulting NJS Intakes ⁵	CPS Reports		CWS Referrals		No Action Required (NAR)		Related Information (RI)		Information & Referral (I&R)		Information Only (IO)		CPS Reports		CWS Referrals		Total
					n	%	n	%	n	%	n	%	n	%	n	%	n	%	n	%	
June 2017	13,832	617	41	15,143	4,853	32.0%	1,664	11.0%	476	3.1%	4,063	26.8%	1,642	10.8%	2,445	16.1%	4,853	74.5%	1,665	25.5%	6,518
July 2017	12,245	710	57	13,369	3,814	28.5%	1,389	10.4%	336	2.5%	3,877	29.0%	1,436	10.7%	2,517	18.8%	3,814	73.3%	1,389	26.7%	5,203
August 2017	11,672	445	38	12,927	3,866	29.9%	1,338	10.4%	393	3.0%	3,447	26.7%	1,535	11.9%	2,348	18.2%	3,866	74.3%	1,340	25.7%	5,206
September 2017	13,450	570	40	14,750	4,719	32.0%	1,642	11.1%	381	2.6%	3,951	26.8%	1,700	11.5%	2,357	16.0%	4,719	74.2%	1,643	25.8%	6,362
October 2017	15,474	657	45	16,828	5,613	33.4%	1,968	11.7%	305	1.8%	4,353	25.9%	1,883	11.2%	2,706	16.1%	5,613	74.1%	1,966	25.9%	7,579
November 2017	14,446	672	43	15,694	5,223	33.3%	1,750	11.2%	235	1.5%	4,246	27.1%	1,680	10.7%	2,560	16.3%	5,223	74.9%	1,753	25.1%	6,976
December 2017	13,005	560	38	14,194	4,601	32.4%	1,594	11.2%	220	1.5%	3,843	27.1%	1,724	12.1%	2,212	15.6%	4,601	74.3%	1,594	25.7%	6,195
January 2018	14,876	952	60	15,833	5,276	33.3%	1,784	11.3%	242	1.5%	4,346	27.4%	1,755	11.1%	2,430	15.3%	5,276	74.7%	1,784	25.3%	7,060
February 2018	13,558	727	54	14,638	4,933	33.7%	1,643	11.2%	251	1.7%	3,807	26.0%	1,740	11.9%	2,264	15.5%	4,933	75.0%	1,644	25.0%	6,577
March 2018	14,714	804	55	15,869	5,212	32.8%	1,727	10.9%	288	1.8%	4,187	26.4%	1,855	11.7%	2,600	16.4%	5,212	75.1%	1,727	24.9%	6,939
April 2018	14,148	727	54	15,227	5,275	34.6%	1,603	10.5%	252	1.7%	3,952	26.0%	1,818	11.9%	2,327	15.3%	5,275	76.7%	1,601	23.3%	6,876
May 2018	15,956	1,482	69	16,668	5,920	35.5%	1,833	11.0%	316	1.9%	4,104	24.6%	1,997	12.0%	2,498	15.0%	5,920	76.3%	1,836	23.7%	7,756
June 2018	13,796	1,021	72	14,490	4,948	34.1%	1,614	11.1%	264	1.8%	3,662	25.3%	1,693	11.7%	2,309	15.9%	4,948	75.4%	1,615	24.6%	6,563
	13,936	765	51	15,048	4,943	32.8%	1,658	11.0%	305	2.0%	3,988	26.5%	1,728	11.5%	2,429	16.1%	4,943	74.9%	1,658	25.1%	6,601
Overall Total	181,172	9,944		195,630	64,253		21,549		3,959		51,838		22,458		31,573		64,253	74.9%	21,557	25.1%	85,810

¹Comes from three distinct sources: (1) the Automatic Call Distribution (ACD) phone system; which keeps a count of the number of calls and call routing; (2) Monthly NJSpirit Intakes; which record decision making on calls received by hotline screeners, and (3) NJSpirit extracts of assigned CWS Referrals and CPS Reports.

²The number of Intakes, CPS Reports, and CWS Referrals are based on an extract from NJSpirit. Data extracted by the Office of Research, Evaluation, and Reporting on **July 9, 2018** includes all Intakes, CPS Reports, and CWS Referrals received from **June 1, 2018 through June 30, 2018**.

³The number calls received through the ACD System that were directed to a screener from any call-in phone number.

⁴The number of calls received through the ACD System that are abandoned either while waiting in queue or while ringing.

⁵The number of Intakes entered in NJSpirit from the number of calls received.

⁶The number of Intakes recorded in NJSpirit, by type of Intake. There is not a one-to-one relationship between an ACD call and an Intake; multiple calls to State Central Registry (SCR) may result in a single Intake, or one call may result in multiple Intakes.

⁷Intake: The process of documenting: a report of alleged abuse or neglect of a child (CPS); a request for services on behalf of a child, or a referral of a child for services (CWS); a call in which the caller provides additional or clarifying information about a current service case or active investigation (RI); informing a caller of, or referring a caller to, services available from other private or public sources (I&R); a call that requires no action by CP&P (NAR); or a response to a simple inquiry (IO).

⁸NJ SPIRIT: NJ Statewide Protection Investigation and Reporting Information Tool case management system

CP&P Annual Trends in CPS Reports and CWS Referrals

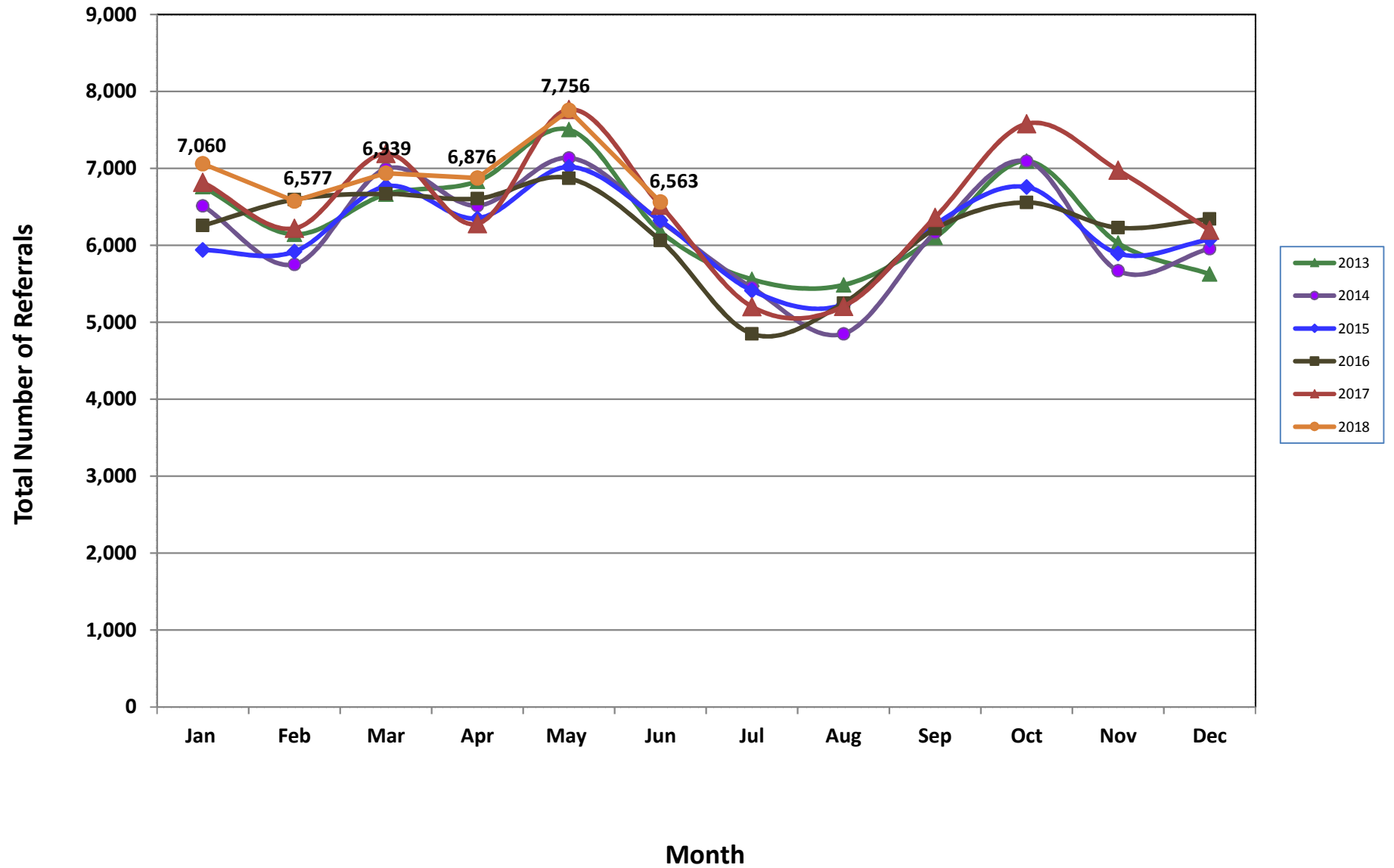


Table 2: Assignments to CP&P Offices: CPS Reports and CWS Referrals¹

Intake Date ³		CPS Reports ²	CWS Referrals ²	Total Assignments ²
2013	Jan 2013	5,464	1,296	6,760
	Feb 2013	4,966	1,177	6,143
	Mar 2013	5,355	1,309	6,664
	Apr 2013	5,430	1,402	6,832
	May 2013	5,993	1,510	7,503
	Jun 2013	4,947	1,230	6,177
	Jul 2013	4,330	1,228	5,558
	Aug 2013	4,330	1,155	5,485
	Sep 2013	4,851	1,251	6,102
	Oct 2013	5,614	1,481	7,095
	Nov 2013	4,694	1,334	6,028
	Dec 2013	4,397	1,229	5,626
	Total	60,371	15,602	75,973
2014	Jan 2014	5,097	1,416	6,513
	Feb 2014	4,457	1,295	5,752
	Mar 2014	5,408	1,586	6,994
	Apr 2014	5,049	1,467	6,516
	May 2014	5,501	1,635	7,136
	Jun 2014	4,796	1,517	6,313
	Jul 2014	4,202	1,247	5,449
	Aug 2014	3,629	1,222	4,851
	Sep 2014	4,668	1,498	6,166
	Oct 2014	5,509	1,586	7,095
	Nov 2014	4,254	1,416	5,670
	Dec 2014	4,509	1,447	5,956
	Total	57,079	17,332	74,411
2015	Jan 2015	4,549	1,391	5,940
	Feb 2015	4,574	1,345	5,919
	Mar 2015	5,187	1,580	6,767
	Apr 2015	4,967	1,384	6,351
	May 2015	5,457	1,561	7,018
	Jun 2015	4,887	1,436	6,323
	Jul 2015	4,140	1,273	5,413
	Aug 2015	3,978	1,256	5,234
	Sep 2015	4,776	1,495	6,271
	Oct 2015	5,139	1,619	6,758
	Nov 2015	4,417	1,477	5,894
	Dec 2015	4,530	1,544	6,074
	Total	56,601	17,361	73,962

Table 2: Assignments to CP&P Offices: CPS Reports and CWS Referrals¹

	Intake Date ³	CPS Reports ²	CWS Referrals ²	Total Assignments ²
2016	Jan 2016	4,686	1,571	6,257
	Feb 2016	4,974	1,622	6,596
	Mar 2016	5,000	1,669	6,669
	Apr 2016	5,065	1,542	6,607
	May 2016	5,238	1,633	6,871
	Jun 2016	4,602	1,461	6,063
	Jul 2016	3,663	1,187	4,850
	Aug 2016	3,941	1,307	5,248
	Sep 2016	4,654	1,559	6,213
	Oct 2016	4,935	1,622	6,557
	Nov 2016	4,677	1,552	6,229
	Dec 2016	4,762	1,580	6,342
		Total	56,197	18,305
2017	Jan 2017	5,111	1,708	6,819
	Feb 2017	4,716	1,504	6,220
	Mar 2017	5,349	1,843	7,192
	Apr 2017	4,790	1,490	6,280
	May 2017	5,847	1,919	7,766
	Jun 2017	4,853	1,665	6,518
	Jul 2017	3,814	1,389	5,203
	Aug 2017	3,866	1,340	5,206
	Sep 2017	4,719	1,643	6,362
	Oct 2017	5,613	1,966	7,579
	Nov 2017	5,223	1,753	6,976
	Dec 2017	4,601	1,594	6,195
		Total	58,502	19,814
2018	Jan 2018	5,276	1,784	7,060
	Feb 2018	4,933	1,644	6,577
	Mar 2018	5,212	1,727	6,939
	Apr 2018	5,275	1,601	6,876
	May 2018	5,920	1,836	7,756
	Jun 2018	4,948	1,615	6,563
		Total	31,564	10,207
Grand Total		320,314	98,621	418,935

¹Source of Data: NJ SPIRIT

²A CPS Report or a CWS Referral may include multiple children in a family, with one or more allegation or request for services. In these cases, each CPS Report or CWS Referral is counted once - the CPS Report or the CWS Referral is the unit of analysis rather than the child.

³Prior to January 2014, the number of CPS Reports and CWS Referrals was based on the type of assignment of the CPS Report or CWS Referral. Beginning in January 2014, the number of CPS Reports and CWS Referrals is based on the number of CPS Reports and CWS Referrals received.

Table 3: Source of CPS Reports and CWS Referrals

	Source	Jun 2017	Jul 2017	Aug 2017	Sep 2017	Oct 2017	Nov 2017	Dec 2017	Jan 2018	Feb 2018	Mar 2018	Apr 2018	May 2018	Jun 2018		13 Month Total	
CPS Reports and CWS Referrals	School Staff	1,149	150	90	1211	2030	1851	1622	1932	1970	1969	1783	2213	1243	19%	19,213	22%
	Healthcare Provider	932	818	873	861	968	953	848	1003	809	931	932	994	885	13%	11,807	14%
	Law Enforcement	1,072	1,148	1169	1180	1236	1130	988	1018	1001	1149	1179	1264	1220	19%	14,754	17%
	Government Agency	438	400	423	442	475	399	408	392	410	466	417	446	441	7%	5,557	6%
	Parent	586	571	535	528	567	571	487	569	468	469	509	548	574	9%	6,982	8%
	Relative/Friend/Neighbor	525	541	494	462	513	493	396	531	394	440	475	496	517	8%	6,277	7%
	Anonymous	754	580	627	711	753	641	595	602	623	641	628	789	683	10%	8,627	10%
	CP&P	144	145	142	142	150	107	129	125	121	107	130	143	140	2%	1,725	2%
	Court/Legal	183	131	161	162	148	116	135	130	130	131	158	164	154	2%	1,903	2%
	Community Group/Individual	283	288	307	279	320	299	265	318	289	294	325	290	301	5%	3,858	4%
	Facility Staff (incl Correctional Facility)	102	90	92	89	97	75	46	85	70	72	68	97	64	1%	1,047	1%
	Child (Self)	38	35	41	46	32	41	25	49	33	41	38	34	49	1%	502	1%
	Other	296	283	235	236	272	273	237	294	242	207	217	261	272	4%	3,325	4%
	Daycare/Babysitter	16	23	17	13	18	27	14	12	17	22	17	17	20	0%	233	0%
	Total		6,518	5,203	5,206	6,362	7,579	6,976	6,195	7,060	6,577	6,939	6,876	7,756	6,563		85,810

Table 4: Monthly Count of CPS Reports and CWS Referrals Assigned to Counties

County														Average Number of Assignments Last 13 Months	May 18 to Jun 18 Numerical Difference
	Jun 2017	Jul 2017	Aug 2017	Sep 2017	Oct 2017	Nov 2017	Dec 2017	Jan 2018	Feb 2018	Mar 2018	Apr 2018	May 2018	Jun 2018		
Atlantic	253	214	245	255	293	253	221	291	208	267	260	326	284	259	-42
Bergen	351	284	291	362	428	418	416	394	371	458	374	474	354	383	-120
Burlington	283	262	256	328	371	343	294	315	307	290	312	302	304	305	2
Camden	571	447	492	530	675	576	535	634	526	559	562	643	564	563	-79
Cape May	76	80	64	68	86	84	77	82	73	68	95	100	97	81	-3
Cumberland	236	203	207	249	252	213	193	250	174	223	265	266	202	226	-64
Essex	770	561	585	642	804	721	665	787	695	778	770	811	713	716	-98
Gloucester	280	221	235	232	282	267	252	268	219	239	272	298	231	254	-67
Hudson	434	295	290	418	452	454	418	439	386	466	454	509	412	417	-97
Hunterdon	37	49	40	64	64	50	60	60	54	58	67	62	56	55	-6
Mercer	272	210	222	308	282	298	232	264	262	262	295	330	274	270	-56
Middlesex	404	350	257	420	533	525	419	540	463	498	473	534	474	453	-60
Monmouth	357	276	264	349	442	381	327	413	384	427	376	446	341	368	-105
Morris	239	163	168	216	290	250	219	269	191	245	240	256	199	227	-57
Ocean	377	339	351	342	422	418	356	411	364	420	397	427	398	386	-29
Passaic	424	324	319	425	576	513	421	451	456	469	448	571	423	448	-148
Salem	85	74	54	102	83	100	80	90	68	99	92	90	79	84	-11
Somerset	151	111	117	127	166	169	172	156	157	179	174	180	189	158	9
Sussex	93	72	92	92	106	111	92	126	90	102	124	112	118	102	6
Union	335	255	246	345	353	343	324	361	366	352	321	379	343	333	-36
Warren	99	109	69	117	131	102	72	94	101	117	108	117	110	104	-7
County Subtotals	6,127	4,899	4,864	5,991	7,091	6,589	5,845	6,695	5,915	6,576	6,479	7,233	6,165	6,190	-1,068
Central Region IAIU	67	42	55	54	68	73	55	62	58	63	62	89	64	62	-25
Metro Region IAIU	48	34	25	41	58	48	56	54	63	48	52	78	60	51	-18
Northern Region IAIU	49	47	34	51	70	58	54	60	53	53	69	88	60	57	-28
Southern Region IAIU	80	50	63	66	102	77	84	90	75	74	86	95	71	78	-24
IAIU Subtotals	244	173	177	212	298	256	249	266	249	238	269	350	255	249	-95
Unable to Determine¹	146	129	163	158	187	129	98	94	407	122	125	169	137	159	-32
Other Offices	1	2	2	1	3	2	3	5	6	3	3	4	6	3	2
Grand Total	6,518	5,203	5,206	6,362	7,579	6,976	6,195	7,060	6,577	6,939	6,876	7,756	6,563	6,601	-1,193

¹CPS Reports or CWS Referrals not assigned to an office through the Assignment Designee, but were assigned to an office for an assessment or investigation.

Table 5: Monthly Count of CPS Reports and CWS Referrals Assigned to CP&P Local Offices

County	Local Office	Type of Referral														Total
			Jun 2017	Jul 2017	Aug 2017	Sep 2017	Oct 2017	Nov 2017	Dec 2017	Jan 2018	Feb 2018	Mar 2018	Apr 2018	May 2018	Jun 2018	
ATLANTIC	Atlantic East	CPS	107	108	102	107	138	99	94	127	95	131	118	157	132	1,515
		CWS	41	32	41	35	47	51	33	36	29	28	32	40	49	494
		Total	148	140	143	142	185	150	127	163	124	159	150	197	181	2,009
	Atlantic West	CPS	76	60	81	90	74	79	75	94	68	75	88	98	74	1,032
		CWS	29	14	21	23	34	24	19	34	16	33	22	31	29	329
		Total	105	74	102	113	108	103	94	128	84	108	110	129	103	1,361
	County Totals	CPS	183	168	183	197	212	178	169	221	163	206	206	255	206	2,547
		CWS	70	46	62	58	81	75	52	70	45	61	54	71	78	823
		Total	253	214	245	255	293	253	221	291	208	267	260	326	284	3,370
BERGEN	Bergen Central	CPS	109	72	70	106	142	140	128	138	112	144	122	141	112	1,536
		CWS	31	34	33	47	45	47	48	40	44	54	37	58	52	570
		Total	140	106	103	153	187	187	176	178	156	198	159	199	164	2,106
	Bergen South	CPS	151	117	138	149	182	167	177	154	163	198	144	199	119	2,058
		CWS	60	61	50	60	59	64	63	62	52	62	71	76	71	811
		Total	211	178	188	209	241	231	240	216	215	260	215	275	190	2,869
	County Totals	CPS	260	189	208	255	324	307	305	292	275	342	266	340	231	3,594
		CWS	91	95	83	107	104	111	111	102	96	116	108	134	123	1,381
		Total	351	284	291	362	428	418	416	394	371	458	374	474	354	4,975
BURLINGTON	Burlington East	CPS	107	116	97	125	146	137	101	129	110	118	116	104	115	1,521
		CWS	35	32	30	39	52	43	38	39	46	35	36	46	45	516
		Total	142	148	127	164	198	180	139	168	156	153	152	150	160	2,037
	Burlington West	CPS	108	81	96	116	126	117	99	108	117	105	108	120	114	1,415
		CWS	33	33	33	48	47	46	56	39	34	32	52	32	30	515
		Total	141	114	129	164	173	163	155	147	151	137	160	152	144	1,930
	County Totals	CPS	215	197	193	241	272	254	200	237	227	223	224	224	229	2,936
		CWS	68	65	63	87	99	89	94	78	80	67	88	78	75	1,031
		Total	283	262	256	328	371	343	294	315	307	290	312	302	304	3,967
CAMDEN	Camden Central	CPS	136	99	117	106	148	129	122	157	108	126	111	141	109	1,609
		CWS	38	29	36	27	40	41	51	31	30	39	32	47	33	474
		Total	174	128	153	133	188	170	173	188	138	165	143	188	142	2,083
	Camden East	CPS	103	75	94	104	123	118	100	116	99	129	139	127	113	1,440
		CWS	32	34	28	30	49	46	27	39	37	32	30	30	41	455
		Total	135	109	122	134	172	164	127	155	136	161	169	157	154	1,895
	Camden North	CPS	114	88	87	112	113	109	82	118	114	105	106	120	115	1,383
		CWS	43	37	29	41	47	31	35	50	24	34	25	41	44	481
		Total	157	125	116	153	160	140	117	168	138	139	131	161	159	1,864
	Camden South	CPS	88	71	78	88	108	74	85	89	79	75	100	113	86	1,134
		CWS	17	14	23	22	47	28	33	34	35	19	19	24	23	338
		Total	105	85	101	110	155	102	118	123	114	94	119	137	109	1,472
	County Totals	CPS	441	333	376	410	492	430	389	480	400	435	456	501	423	5,566
		CWS	130	114	116	120	183	146	146	154	126	124	106	142	141	1,748
		Total	571	447	492	530	675	576	535	634	526	559	562	643	564	7,314
CAPE MAY	Cape May	CPS	67	64	45	58	66	61	58	64	47	46	69	81	76	802
		CWS	9	16	19	10	20	23	19	18	26	22	26	19	21	248
		Total	76	80	64	68	86	84	77	82	73	68	95	100	97	1,050
	County Totals	CPS	67	64	45	58	66	61	58	64	47	46	69	81	76	802
		CWS	9	16	19	10	20	23	19	18	26	22	26	19	21	248
		Total	76	80	64	68	86	84	77	82	73	68	95	100	97	1,050
CUMBERLAND	Cumberland East	CPS	48	50	54	72	68	48	44	62	36	55	60	56	58	711
		CWS	20	33	23	19	27	13	22	16	17	18	18	17	15	258
		Total	68	83	77	91	95	61	66	78	53	73	78	73	73	969
	Cumberland West	CPS	123	84	103	118	117	113	101	146	92	126	146	146	111	1,526
		CWS	45	36	27	40	40	39	26	26	29	24	41	47	18	438
		Total	168	120	130	158	157	152	127	172	121	150	187	193	129	1,964
	County Totals	CPS	171	134	157	190	185	161	145	208	128	181	206	202	169	2,237
		CWS	65	69	50	59	67	52	48	42	46	42	59	64	33	696
		Total	236	203	207	249	252	213	193	250	174	223	265	266	202	2,933



Table 5: Monthly Count of CPS Reports and CWS Referrals Assigned to CP&P Local Offices

County	Local Office	Type of Referral	Month													Total
			Jun 2017	Jul 2017	Aug 2017	Sep 2017	Oct 2017	Nov 2017	Dec 2017	Jan 2018	Feb 2018	Mar 2018	Apr 2018	May 2018	Jun 2018	
ESSEX	Essex Central	CPS	92	82	78	79	121	108	79	93	77	107	103	113	95	1,227
		CWS	42	33	23	33	40	33	28	42	22	35	36	39	23	429
		Total	134	115	101	112	161	141	107	135	99	142	139	152	118	1,656
	Essex North	CPS	84	50	58	70	68	67	64	80	71	75	70	83	62	902
		CWS	32	25	18	23	35	31	25	25	21	34	24	24	35	352
		Total	116	75	76	93	103	98	89	105	92	109	94	107	97	1,254
	Essex South	CPS	62	45	53	58	69	68	72	83	64	63	83	65	92	877
		CWS	21	12	23	19	34	20	28	18	30	21	20	24	25	295
		Total	83	57	76	77	103	88	100	101	94	84	103	89	117	1172
	Newark Center City	CPS	114	71	75	89	110	98	104	107	86	105	88	105	91	1243
		CWS	47	31	37	30	29	34	18	34	35	34	38	42	33	442
		Total	161	102	112	119	139	132	122	141	121	139	126	147	124	1685
	Newark Northeast	CPS	103	83	90	94	99	106	76	107	97	97	99	104	81	1236
		CWS	32	25	18	29	44	34	30	44	39	44	38	40	42	459
		Total	135	108	108	123	143	140	106	151	136	141	137	144	123	1695
Newark South	CPS	99	78	75	80	116	93	103	116	111	116	128	138	106	1359	
	CWS	42	26	37	38	39	29	38	38	42	47	43	34	28	481	
	Total	141	104	112	118	155	122	141	154	153	163	171	172	134	1840	
County Totals	CPS	554	409	429	470	583	540	498	586	506	563	571	608	527	6844	
	CWS	216	152	156	172	221	181	167	201	189	215	199	203	186	2458	
	Total	770	561	585	642	804	721	665	787	695	778	770	811	713	9302	
GLOUCESTER	Gloucester East	CPS	106	74	91	79	102	89	96	94	85	79	113	118	79	1205
		CWS	31	27	25	33	28	34	30	35	22	24	41	26	18	374
		Total	137	101	116	112	130	123	126	129	107	103	154	144	97	1579
	Gloucester West	CPS	104	91	85	86	123	113	100	105	93	100	96	118	100	1314
		CWS	39	29	34	34	29	31	26	34	19	36	22	36	34	403
		Total	143	120	119	120	152	144	126	139	112	136	118	154	134	1717
	County Totals	CPS	210	165	176	165	225	202	196	199	178	179	209	236	179	2519
		CWS	70	56	59	67	57	65	56	69	41	60	63	62	52	777
		Total	280	221	235	232	282	267	252	268	219	239	272	298	231	3296
HUDSON	Hudson Central	CPS	84	59	52	69	71	87	83	103	88	98	115	131	93	1133
		CWS	32	23	26	35	34	41	38	46	37	36	36	56	57	497
		Total	116	82	78	104	105	128	121	149	125	134	151	187	150	1630
	Hudson North	CPS	67	67	42	72	76	83	87	75	77	92	98	79	62	977
		CWS	39	19	14	31	29	33	21	29	12	32	26	38	22	345
		Total	106	86	56	103	105	116	108	104	89	124	124	117	84	1322
	Hudson South	CPS	70	53	45	80	86	68	46	57	47	65	53	47	55	772
		CWS	33	16	21	27	39	17	19	26	19	24	15	18	19	293
		Total	103	69	66	107	125	85	65	83	66	89	68	65	74	1065
	Hudson West	CPS	77	33	66	74	87	104	89	74	80	80	80	102	72	1018
		CWS	32	25	24	30	30	21	35	29	26	39	31	38	32	392
		Total	109	58	90	104	117	125	124	103	106	119	111	140	104	1410
County Totals	CPS	298	212	205	295	320	342	305	309	292	335	346	359	282	3900	
	CWS	136	83	85	123	132	112	113	130	94	131	108	150	130	1527	
	Total	434	295	290	418	452	454	418	439	386	466	454	509	412	5427	
HUNTERDON	Hunterdon	CPS	31	30	32	46	40	30	44	43	36	42	47	44	43	508
		CWS	6	19	8	18	24	20	16	17	18	16	20	18	13	213
		Total	37	49	40	64	64	50	60	60	54	58	67	62	56	721
	County Totals	CPS	31	30	32	46	40	30	44	43	36	42	47	44	43	508
		CWS	6	19	8	18	24	20	16	17	18	16	20	18	13	213
Total		37	49	40	64	64	50	60	60	54	58	67	62	56	721	
MERCER	Mercer North	CPS	98	62	94	103	104	105	79	94	103	95	124	125	107	1293
		CWS	29	35	20	49	34	38	35	46	43	42	34	39	32	476
		Total	127	97	114	152	138	143	114	140	146	137	158	164	139	1769
	Mercer South	CPS	113	78	83	109	109	112	86	89	98	90	104	134	105	1310
		CWS	32	35	25	46	35	43	32	35	18	35	33	32	30	431
		Total	145	113	108	155	144	155	118	124	116	125	137	166	135	1741
	County Totals	CPS	211	140	177	212	213	217	165	183	201	185	228	259	212	2603
		CWS	61	70	45	95	69	81	67	81	61	77	67	71	62	907
Total		272	210	222	307	282	298	232	264	262	262	295	330	274	3510	

Data in this report is preliminary and may differ from any final report. This report is produced to ensure continuous quality improvement throughout DCF.

Table 5: Monthly Count of CPS Reports and CWS Referrals Assigned to CP&P Local Offices

County	Local Office	Type of Referral	Jun 2017	Jul 2017	Aug 2017	Sep 2017	Oct 2017	Nov 2017	Dec 2017	Jan 2018	Feb 2018	Mar 2018	Apr 2018	May 2018	Jun 2018	Total
MIDDLESEX	Middlesex Central	CPS	78	75	44	99	102	115	87	139	96	118	104	118	101	1276
		CWS	25	29	17	36	41	35	35	40	35	29	36	29	36	423
		Total	103	104	61	135	143	150	122	179	131	147	140	147	137	1699
	Middlesex Coastal	CPS	112	98	75	112	142	124	121	127	124	125	128	144	123	1555
		CWS	43	23	28	41	51	53	33	51	28	45	36	52	42	526
		Total	155	121	103	153	193	177	154	178	152	170	164	196	165	2081
	Middlesex West	CPS	111	90	62	112	141	140	106	132	134	148	128	146	128	1578
		CWS	35	35	31	20	56	58	37	51	46	33	41	45	44	532
		Total	146	125	93	132	197	198	143	183	180	181	169	191	172	2110
	County Totals	CPS	301	263	181	323	385	379	314	398	354	391	360	408	352	4409
		CWS	103	87	76	97	148	146	105	142	109	107	113	126	122	1481
		Total	404	350	257	420	533	525	419	540	463	498	473	534	474	5890
MONMOUTH	Monmouth North	CPS	145	126	103	139	173	152	125	160	167	162	149	174	152	1927
		CWS	52	30	32	38	54	54	44	61	60	58	56	61	34	634
		Total	197	156	135	177	227	206	169	221	227	220	205	235	186	2561
	Monmouth South	CPS	119	85	97	120	161	133	114	150	123	159	137	160	113	1671
		CWS	41	35	32	52	54	42	44	42	34	48	34	51	42	551
		Total	160	120	129	172	215	175	158	192	157	207	171	211	155	2222
	County Totals	CPS	264	211	200	259	334	285	239	310	290	321	286	334	265	3598
		CWS	93	65	64	90	108	96	88	103	94	106	90	112	76	1185
		Total	357	276	264	349	442	381	327	413	384	427	376	446	341	4783
MORRIS	Morris East	CPS	82	53	52	60	81	86	66	96	64	73	71	94	66	944
		CWS	29	21	26	35	36	38	31	40	32	34	32	29	25	408
		Total	111	74	78	95	117	124	97	136	96	107	103	123	91	1352
	Morris West	CPS	93	70	64	85	112	99	88	86	63	97	103	107	77	1144
		CWS	35	19	26	36	61	27	34	47	32	41	34	26	31	449
		Total	128	89	90	121	173	126	122	133	95	138	137	133	108	1593
	County Totals	CPS	175	123	116	145	193	185	154	182	127	170	174	201	143	2088
		CWS	64	40	52	71	97	65	65	87	64	75	66	55	56	857
		Total	239	163	168	216	290	250	219	269	191	245	240	256	199	2945
OCEAN	Ocean North	CPS	148	122	121	134	179	181	168	163	133	161	167	166	144	1987
		CWS	41	38	46	37	52	45	36	56	43	44	40	69	51	598
		Total	189	160	167	171	231	226	204	219	176	205	207	235	195	2585
	Ocean South	CPS	133	134	130	129	144	142	121	159	146	174	146	149	167	1874
		CWS	55	45	54	42	47	50	31	33	42	41	44	43	36	563
		Total	188	179	184	171	191	192	152	192	188	215	190	192	203	2437
	County Totals	CPS	281	256	251	263	323	323	289	322	279	335	313	315	311	3861
		CWS	96	83	100	79	99	95	67	89	85	85	84	112	87	1161
		Total	377	339	351	342	422	418	356	411	364	420	397	427	398	5022
PASSAIC	Passaic Central	CPS	150	117	128	172	228	199	155	173	171	171	178	243	163	2248
		CWS	52	40	40	60	90	76	78	65	75	74	62	87	54	853
		Total	202	157	168	232	318	275	233	238	246	245	240	330	217	3101
	Passaic North	CPS	157	119	104	130	176	158	131	134	135	166	152	185	143	1890
		CWS	65	48	47	63	82	80	57	79	75	58	56	56	63	829
		Total	222	167	151	193	258	238	188	213	210	224	208	241	206	2719
	County Totals	CPS	307	236	232	302	404	357	286	307	306	337	330	428	306	4138
		CWS	117	88	87	123	172	156	135	144	150	132	118	143	117	1682
		Total	424	324	319	425	576	513	421	451	456	469	448	571	423	5820
SALEM	Salem	CPS	68	52	45	82	67	77	58	68	56	79	77	73	62	864
		CWS	17	22	9	20	16	23	22	22	12	20	15	17	17	232
		Total	85	74	54	102	83	100	80	90	68	99	92	90	79	1096
	County Totals	CPS	68	52	45	82	67	77	58	68	56	79	77	73	62	864
		CWS	17	22	9	20	16	23	22	22	12	20	15	17	17	232
		Total	85	74	54	102	83	100	80	90	68	99	92	90	79	1096
SOMERSET	Somerset	CPS	121	74	83	97	136	130	119	119	127	115	140	136	155	1552
		CWS	30	37	34	30	30	39	53	37	30	64	34	44	34	496
		Total	151	111	117	127	166	169	172	156	157	179	174	180	189	2048
	County Totals	CPS	121	74	83	97	136	130	119	119	127	115	140	136	155	1552
		CWS	30	37	34	30	30	39	53	37	30	64	34	44	34	496
Total	151	111	117	127	166	169	172	156	157	179	174	180	189	2048		

Table 5: Monthly Count of CPS Reports and CWS Referrals Assigned to CP&P Local Offices

County	Local Office	Type of Referral													Total	
			Jun 2017	Jul 2017	Aug 2017	Sep 2017	Oct 2017	Nov 2017	Dec 2017	Jan 2018	Feb 2018	Mar 2018	Apr 2018	May 2018		Jun 2018
SUSSEX	Sussex	CPS	67	52	67	69	80	86	70	85	64	70	90	87	94	981
		CWS	26	20	25	23	26	25	22	41	26	32	34	25	24	349
		Total	93	72	92	92	106	111	92	126	90	102	124	112	118	1330
	County Totals	CPS	67	52	67	69	80	86	70	85	64	70	90	87	94	981
		CWS	26	20	25	23	26	25	22	41	26	32	34	25	24	349
		Total	93	72	92	92	106	111	92	126	90	102	124	112	118	1330
UNION	Union Central	CPS	84	73	72	68	74	84	91	88	89	87	88	98	78	1074
		CWS	35	30	21	40	31	18	19	30	36	29	25	28	25	367
		Total	119	103	93	108	105	102	110	118	125	116	113	126	103	1441
	Union East	CPS	97	55	69	91	88	91	75	102	91	98	74	89	92	1112
		CWS	27	15	15	31	39	26	29	26	32	33	26	27	32	358
		Total	124	70	84	122	127	117	104	128	123	131	100	116	124	1470
	Union West	CPS	57	53	51	86	88	88	83	77	84	83	81	98	91	1020
		CWS	35	29	18	29	33	36	27	38	34	22	27	39	25	392
		Total	92	82	69	115	121	124	110	115	118	105	108	137	116	1412
	County Totals	CPS	238	181	192	245	250	263	249	267	264	268	243	285	261	3206
		CWS	97	74	54	100	103	80	75	94	102	84	78	94	82	1117
		Total	335	255	246	345	353	343	324	361	366	352	321	379	343	4323
WARREN	Warren	CPS	68	80	50	83	98	69	50	75	72	85	88	93	85	996
		CWS	31	29	19	34	33	33	22	19	29	32	20	24	25	350
		Total	99	109	69	117	131	102	72	94	101	117	108	117	110	1346
	County Totals	CPS	68	80	50	83	98	69	50	75	72	85	88	93	85	996
		CWS	31	29	19	34	33	33	22	19	29	32	20	24	25	350
		Total	99	109	69	117	131	102	72	94	101	117	108	110	1346	
County CPS Referral Total		CPS	4,531	3,569	3,598	4,407	5,202	4,876	4,302	4,955	4,392	4,908	4,929	5,469	4,611	59,749
County CWS Referral Total		CWS	1,596	1,330	1,266	1,583	1,889	1,713	1,543	1,740	1,523	1,668	1,550	1,764	1,554	20,719
County Referral Total		Total	6,127	4,899	4,864	5,990	7,091	6,589	5,845	6,695	5,915	6,576	6,479	7,233	6,165	80,468
Central Region IAIU	CPS	67	42	55	54	68	73	55	62	58	63	62	89	64	812	
	CWS	0	0	0	0	0	0	0	0	0	0	0	0	0	0	
	Total	67	42	55	54	68	73	55	62	58	63	62	89	64	812	
Metro Region IAIU	CPS	48	34	25	41	58	48	56	54	63	48	52	78	60	665	
	CWS	0	0	0	0	0	0	0	0	0	0	0	0	0	0	
	Total	48	34	25	41	58	48	56	54	63	48	52	78	60	665	
Northern Region IAIU	CPS	49	47	34	51	70	58	54	60	53	53	69	88	60	746	
	CWS	0	0	0	0	0	0	0	0	0	0	0	0	0	0	
	Total	49	47	34	51	70	58	54	60	53	53	69	88	60	746	
Southern Region IAIU	CPS	80	50	63	66	102	77	84	90	75	74	86	95	71	1,013	
	CWS	0	0	0	0	0	0	0	0	0	0	0	0	0	0	
	Total	80	50	63	66	102	77	84	90	75	74	86	95	71	1,013	
IAIU CPS Subtotal		CPS	244	173	177	212	298	256	249	266	249	238	269	350	255	3,236
IAIU CWS Subtotal		CWS	0	0	0	0	0	0	0	0	0	0	0	0	0	0
IAIU Subtotal		Total	244	173	177	212	298	256	249	266	249	238	269	350	255	3,236
County and IAIU CPS Subtotal		CPS	4,775	3,742	3,775	4,619	5,500	5,132	4,551	5,221	4,641	5,146	5,198	5,819	4,866	62,985
County and IAIU CWS Subtotal		CWS	1,596	1,330	1,266	1,583	1,889	1,713	1,543	1,740	1,523	1,668	1,550	1,764	1,554	20,719
Unable to Determine ⁽¹⁾		Total	146	129	163	158	187	129	98	94	407	122	125	169	137	2,064
Other Offices		Total	1	2	2	2	3	2	3	5	6	3	3	4	6	42
Grand Total		Total	6,518	5,203	5,206	6,362	7,579	6,976	6,195	7,060	6,577	6,939	6,876	7,756	6,563	85,810

⁽¹⁾CPS Reports or CWS Referrals not assigned to an office through the Assignment Designee, but were assigned to an office for an assessment or investigation.