



Child Protection and Permanency

Monthly Screening and Investigation Report June 2019

Christine Norbut Beyer, MSW
Commissioner



Table of Contents

Table 1: NJ State Central Registry Activity: Monthly Child Abuse and Neglect Hotline Calls, Intakes and Assignments to Child Protection & Permanency (CP&P) Offices

Chart 1: CP&P Annual Trends in Child Protection Services (CPS) Reports and Child Welfare Services (CWS) Referrals

Table 2: Assignments to CP&P Offices: CPS Reports and CWS Referrals

Table 3: Source of CPS Reports and CWS Referrals

Table 4: Monthly Count of CPS Reports and CWS Referrals Assigned to Counties

Table 5: Monthly Count of CPS Reports and CWS Referrals Assigned to CP&P Local Offices

Table 1: NJ State Central Registry Activity: Monthly Child Abuse and Neglect Hotline Calls, Intakes and Assignments to CP&P Offices^{1,2,7}

2018 - 2019	Hotline Call Activity				Intakes Recorded in NJ SPIRIT ^{6,8}												Assignments to CP&P Offices				
	Total Calls to SCR ³	Abandon Calls ⁴	Average Time to Answer (seconds)	Resulting NJS Intakes ⁵	CPS Reports		CWS Referrals		No Action Required (NAR)		Related Information (RI)		Information & Referral (I&R)		Information Only (IO)		CPS Reports		CWS Referrals		Total
					n	%	n	%	n	%	n	%	n	%	n	%	n	%	n	%	
June 2018	13,796	1,021	72	14,490	4,948	34.1%	1,614	11.1%	264	1.8%	3,662	25.3%	1,693	11.7%	2,309	15.9%	4,948	75.4%	1,615	24.6%	6,563
July 2018	11,406	407	35	12,497	4,011	32.1%	1,307	10.5%	214	1.7%	3,387	27.1%	1,374	11.0%	2,204	17.6%	4,011	75.4%	1,308	24.6%	5,319
August 2018	11,633	460	43	12,708	4,102	32.3%	1,409	11.1%	252	2.0%	3,455	27.2%	1,307	10.3%	2,183	17.2%	4,102	74.4%	1,408	25.6%	5,510
September 2018	13,554	925	64	14,277	4,748	33.3%	1,632	11.4%	217	1.5%	3,914	27.4%	1,448	10.1%	2,318	16.2%	4,748	74.4%	1,634	25.6%	6,382
October 2018	15,489	904	68	16,470	5,790	35.2%	2,008	12.2%	260	1.6%	4,103	24.9%	1,827	11.1%	2,482	15.1%	5,790	74.2%	2,011	25.8%	7,801
November 2018	13,533	1,111	80	14,067	4,973	35.4%	1,621	11.5%	210	1.5%	3,749	26.7%	1,453	10.3%	2,061	14.7%	4,973	75.4%	1,620	24.6%	6,593
December 2018	13,020	971	78	13,683	4,891	35.7%	1,524	11.1%	174	1.3%	3,518	25.7%	1,446	10.6%	2,130	15.6%	4,891	76.2%	1,527	23.8%	6,418
January 2019	14,566	1,097	91	15,153	5,443	35.9%	1,858	12.3%	224	1.5%	3,764	24.8%	1,673	11.0%	2,191	14.5%	5,443	74.6%	1,858	25.4%	7,301
February 2019	12,995	1,095	102	13,518	4,811	35.6%	1,626	12.0%	213	1.6%	3,476	25.7%	1,506	11.1%	1,886	14.0%	4,811	74.7%	1,628	25.3%	6,439
March 2019	14,637	1,422	112	15,528	5,677	36.6%	1,826	11.8%	212	1.4%	3,825	24.6%	1,762	11.3%	2,226	14.3%	5,677	75.7%	1,824	24.3%	7,501
April 2019	14,252	1,404	113	14,540	5,313	36.5%	1,630	11.2%	253	1.7%	3,500	24.1%	1,721	11.8%	2,123	14.6%	5,313	76.5%	1,630	23.5%	6,943
May 2019	15,705	1,615	120	15,810	5,853	37.0%	1,780	11.3%	229	1.4%	3,784	23.9%	1,852	11.7%	2,312	14.6%	5,853	76.7%	1,781	23.3%	7,634
June 2019	13,596	1,287	107	14,057	4,636	33.0%	1,507	10.7%	268	1.9%	3,537	25.2%	1,703	12.1%	2,168	15.4%	4,874	76.4%	1,509	23.6%	6,383
	13,706	1,055	83	14,369	5,015	34.9%	1,642	11.4%	230	1.6%	3,667	25.5%	1,597	11.1%	2,199	15.3%	5,033	75.4%	1,643	24.6%	6,676
Overall Total	178,182	13,719		186,798	65,196		21,342		2,990		47,674		20,765		28,593		65,434	75.4%	21,353	24.6%	86,787

¹Comes from three distinct sources: (1) the Automatic Call Distribution (ACD) phone system; which keeps a count of the number of calls and call routing; (2) Monthly NJSpirit Intakes; which record decision making on calls received by hotline screeners, and (3) NJSpirit extracts of assigned CWS Referrals and CPS Reports.

²The number of Intakes, CPS Reports, and CWS Referrals are based on an extract from NJSpirit. Data extracted by the Office of Research, Evaluation, and Reporting on **July 8, 2019** includes all Intakes, CPS Reports, and CWS Referrals received from **June 1, 2019 through June 30, 2019**.

³The number calls received through the ACD System that were directed to a screener from any call-in phone number.

⁴The number of calls received through the ACD System that are abandoned either while waiting in queue or while ringing.

⁵The number of Intakes entered in NJSpirit from the number of calls received.

⁶The number of Intakes recorded in NJSpirit, by type of Intake. There is not a one-to-one relationship between an ACD call and an Intake; multiple calls to State Central Registry (SCR) may result in a single Intake, or one call may result in multiple Intakes.

⁷Intake: The process of documenting: a report of alleged abuse or neglect of a child (CPS); a request for services on behalf of a child, or a referral of a child for services (CWS); a call in which the caller provides additional or clarifying information about a current service case or active investigation (RI); informing a caller of, or referring a caller to, services available from other private or public sources (I&R); a call that requires no action by CP&P (NAR); or a response to a simple inquiry (IO).

CP&P Annual Trends in CPS Reports and CWS Referrals

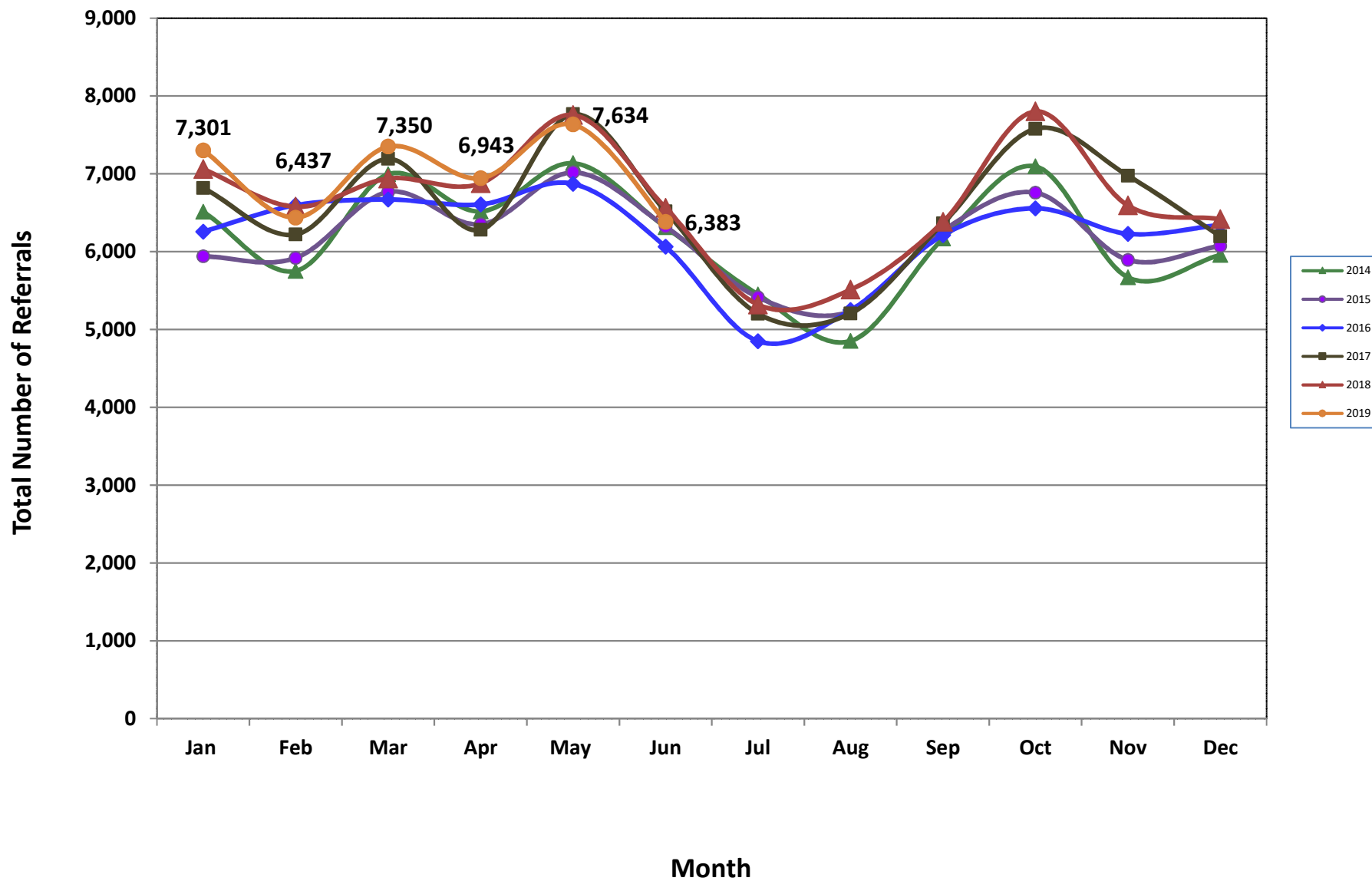


Table 2: Assignments to CP&P Offices: CPS Reports and CWS Referrals¹

Intake Date ³		CPS Reports ²	CWS Referrals ²	Total Assignments ²
2014	Jan 2014	5,097	1,416	6,513
	Feb 2014	4,457	1,295	5,752
	Mar 2014	5,408	1,586	6,994
	Apr 2014	5,049	1,467	6,516
	May 2014	5,501	1,635	7,136
	Jun 2014	4,796	1,517	6,313
	Jul 2014	4,202	1,247	5,449
	Aug 2014	3,629	1,222	4,851
	Sep 2014	4,668	1,498	6,166
	Oct 2014	5,509	1,586	7,095
	Nov 2014	4,254	1,416	5,670
	Dec 2014	4,509	1,447	5,956
	Total	57,079	17,332	74,411
2015	Jan 2015	4,549	1,391	5,940
	Feb 2015	4,574	1,345	5,919
	Mar 2015	5,187	1,580	6,767
	Apr 2015	4,967	1,384	6,351
	May 2015	5,457	1,561	7,018
	Jun 2015	4,887	1,436	6,323
	Jul 2015	4,140	1,273	5,413
	Aug 2015	3,978	1,256	5,234
	Sep 2015	4,776	1,495	6,271
	Oct 2015	5,139	1,619	6,758
	Nov 2015	4,417	1,477	5,894
	Dec 2015	4,530	1,544	6,074
	Total	56,601	17,361	73,962
2016	Jan 2016	4,686	1,571	6,257
	Feb 2016	4,974	1,622	6,596
	Mar 2016	5,000	1,669	6,669
	Apr 2016	5,065	1,542	6,607
	May 2016	5,238	1,633	6,871
	Jun 2016	4,602	1,461	6,063
	Jul 2016	3,663	1,187	4,850
	Aug 2016	3,941	1,307	5,248
	Sep 2016	4,654	1,559	6,213
	Oct 2016	4,935	1,622	6,557
	Nov 2016	4,677	1,552	6,229
	Dec 2016	4,762	1,580	6,342
	Total	56,197	18,305	74,502

Table 2: Assignments to CP&P Offices: CPS Reports and CWS Referrals¹

Intake Date ³		CPS Reports ²	CWS Referrals ²	Total Assignments ²
2017	Jan 2017	5,111	1,708	6,819
	Feb 2017	4,716	1,504	6,220
	Mar 2017	5,349	1,843	7,192
	Apr 2017	4,790	1,490	6,280
	May 2017	5,847	1,919	7,766
	Jun 2017	4,853	1,665	6,518
	Jul 2017	3,814	1,389	5,203
	Aug 2017	3,866	1,340	5,206
	Sep 2017	4,719	1,643	6,362
	Oct 2017	5,613	1,966	7,579
	Nov 2017	5,223	1,753	6,976
	Dec 2017	4,601	1,594	6,195
	Total	58,502	19,814	78,316
2018	Jan 2018	5,276	1,784	7,060
	Feb 2018	4,933	1,644	6,577
	Mar 2018	5,212	1,727	6,939
	Apr 2018	5,275	1,601	6,876
	May 2018	5,920	1,836	7,756
	Jun 2018	4,948	1,615	6,563
	Jul 2018	4,011	1,308	5,319
	Aug 2018	4,102	1,408	5,510
	Sep 2018	4,748	1,634	6,382
	Oct 2018	5,790	2,011	7,801
	Nov 2018	4,973	1,620	6,593
	Dec 2018	4,891	1,527	6,418
	Total	60,079	19,715	79,794
2019	Jan 2019	5,443	1,858	7,301
	Feb 2019	4,811	1,628	6,439
	Mar 2019	5,677	1,824	7,501
	Apr 2019	5,313	1,630	6,943
	May 2019	5,853	1,781	7,634
	June 2019	4,874	1,509	6,383
	Total	27,097	8,721	35,818
Grand Total		315,555	101,248	416,803

¹Source of Data: NJ SPIRIT

²A CPS Report or a CWS Referral may include multiple children in a family, with one or more allegation or request for services. In these cases, each CPS Report or CWS Referral is counted once - the CPS Report or the CWS Referral is the unit of analysis rather than the child.

³Prior to January 2014, the number of CPS Reports and CWS Referrals was based on the type of assignment of the CPS Report or CWS Referral. Beginning in January 2014, the number of CPS Reports and CWS Referrals is based on the number of CPS Reports and CWS Referrals received.

Table 3: Source of CPS Reports and CWS Referrals

CPS Reports and CWS Referrals	Source	Jun 2018	Jul 2018	Aug 2018	Sep 2018	Oct 2018	Nov 2018	Dec 2018	Jan 2019	Feb 2019	Mar 2019	Apr 2019	May 2019	June 2019		13 Month Total	
	School Staff	1,243	184	118	1,237	2,256	1,769	1,643	2,151	1,887	2,388	1,732	2,167	1,163	18%	19,938	23%
	Healthcare Provider	885	904	920	928	1,018	954	891	999	858	977	955	1,033	970	15%	12,292	14%
	Law Enforcement	1,220	1,238	1,201	1,251	1,188	1,186	1,186	1,131	1,156	1,290	1,329	1,409	1,437	23%	16,222	19%
	Government Agency	441	436	468	428	521	430	387	417	345	374	392	477	387	6%	5,503	6%
	Parent	574	573	590	569	563	491	481	512	419	513	509	525	492	8%	6,811	8%
	Relative/Friend/Neighbor	517	475	488	475	452	370	393	447	359	399	456	400	418	7%	5,649	7%
	Anonymous	683	538	573	565	769	576	609	656	586	686	641	715	629	10%	8,226	9%
	CP&P	140	115	142	106	131	99	109	125	118	130	107	102	104	2%	1,528	2%
	Court/Legal	154	143	193	141	171	101	132	190	155	162	182	176	158	2%	2,058	2%
	Community Group/Individual	301	290	317	301	301	264	234	274	234	253	257	257	242	4%	3,525	4%
	Facility Staff (incl Correctional Facility)	64	101	135	103	97	86	79	88	57	85	88	81	76	1%	1,140	1%
	Child (Self)	49	38	53	35	51	30	35	23	29	25	32	37	37	1%	474	1%
Other	272	267	289	228	262	218	226	270	219	204	245	244	248	4%	3,192	4%	
Daycare/Babysitter	20	17	23	15	21	19	13	18	17	15	18	11	22	0%	229	0%	
Total	6,563	5,319	5,510	6,382	7,801	6,593	6,418	7,301	6,439	7,501	7,501	7,634	6,383		86,787		

Table 4: Monthly Count of CPS Reports and CWS Referrals Assigned to Counties

County	Jun 2018	Jul 2018	Aug 2018	Sep 2018	Oct 2018	Nov 2018	Dec 2018	Jan 2019	Feb 2019	Mar 2019	Apr 2019	May 2019	June 2019	Average Number of Assignments Last 13 Months	May 19 to Jun 19 Numerical Difference
Atlantic	284	213	231	295	280	264	243	285	274	296	273	318	279	272	-39
Bergen	354	291	243	333	467	412	377	460	369	460	439	486	376	390	-110
Burlington	304	284	246	270	348	313	318	338	361	337	330	351	288	314	-63
Camden	564	472	485	543	606	515	469	577	485	619	559	588	484	536	-104
Cape May	97	80	85	109	87	73	68	103	83	74	88	70	82	85	12
Cumberland	202	159	205	225	232	204	200	218	191	235	202	219	214	208	-5
Essex	713	545	622	666	859	712	694	798	723	795	740	851	693	724	-158
Gloucester	231	200	229	215	260	235	233	302	250	272	296	341	265	256	-76
Hudson	412	330	342	426	540	420	425	475	410	518	457	510	422	437	-88
Hunterdon	56	48	49	57	75	58	59	48	52	71	50	67	64	58	-3
Mercer	274	223	247	231	365	298	283	298	301	331	295	292	298	287	6
Middlesex	474	358	366	433	563	426	472	527	476	505	449	505	412	459	-93
Monmouth	341	302	277	410	426	380	352	433	333	424	359	424	376	372	-48
Morris	199	204	186	215	292	224	242	264	215	244	241	303	200	233	-103
Ocean	398	357	371	386	482	450	408	428	382	440	460	459	386	416	-73
Passaic	423	307	383	421	567	461	438	482	394	527	485	535	431	450	-104
Salem	79	65	77	104	90	72	70	97	71	75	91	77	57	79	-20
Somerset	189	141	128	155	200	181	165	160	158	196	158	167	155	166	-12
Sussex	118	82	82	99	120	81	97	100	122	116	94	114	104	102	-10
Union	343	260	221	328	396	351	343	401	359	405	353	398	317	344	-81
Warren	110	87	105	118	105	93	104	89	73	118	131	104	102	103	-2
County Subtotals	6,165	5,008	5,180	6,039	7,360	6,223	6,060	6,883	6,082	7,058	6,550	7,179	6,005	6,292	-1,174
Central Region IAIU	64	40	57	39	67	63	47	61	47	61	66	82	57	58	-25
Metro Region IAIU	60	40	38	50	65	61	51	55	47	62	45	64	41	52	-23
Northern Region IAIU	60	42	34	63	71	70	64	58	74	83	57	89	64	64	-25
Southern Region IAIU	71	61	76	67	100	58	71	92	70	85	90	90	69	77	-21
IAIU Subtotals	255	183	205	219	303	252	233	266	238	291	258	325	231	251	-94
Unable to Determine¹	137	128	122	123	135	117	121	149	119	151	132	127	147	131	20
Other Offices	6	0	3	1	3	1	4	3	0	1	3	3	0	2	-3
Grand Total	6,563	5,319	5,510	6,382	7,801	6,593	6,418	7,301	6,439	7,501	6,943	7,634	6,383	6,676	-1251

¹CPS Reports or CWS Referrals not assigned to an office through the Assignment Designee, but were assigned to an office for an assessment or investigation.

Table 5: Monthly Count of CPS Reports and CWS Referrals Assigned to CP&P Local Offices

County	Local Office	Type of Referral													Total	
			Jun 2018	Jul 2018	Aug 2018	Sep 2018	Oct 2018	Nov 2018	Dec 2018	Jan 2019	Feb 2019	Mar 2019	Apr 2019	May 2019		June 2019
ATLANTIC	Atlantic East	CPS	132	97	106	132	132	139	107	140	128	148	123	150	126	1,660
		CWS	49	31	46	43	50	40	43	32	33	42	36	41	34	520
		Total	181	128	152	175	182	179	150	172	161	190	159	191	160	2,180
	Atlantic West	CPS	74	68	60	89	80	73	72	86	84	81	88	111	86	1,052
		CWS	29	17	19	31	18	12	21	27	29	25	26	16	33	303
		Total	103	85	79	120	98	85	93	113	113	106	114	127	119	1,355
	County Totals	CPS	206	165	166	221	212	212	179	226	212	229	211	261	212	2,712
		CWS	78	48	65	74	68	52	64	59	62	67	62	57	67	823
		Total	284	213	231	295	280	264	243	285	274	296	273	318	279	3,535
BERGEN	Bergen Central	CPS	112	76	59	88	147	103	119	137	98	129	134	160	122	1,484
		CWS	52	32	25	44	60	51	39	67	56	45	55	64	36	626
		Total	164	108	84	132	207	154	158	204	154	174	189	224	158	2,110
	Bergen South	CPS	119	136	112	152	187	188	155	173	139	207	173	184	155	2,080
		CWS	71	47	47	49	73	70	64	83	76	79	77	78	63	877
		Total	190	183	159	201	260	258	219	256	215	286	250	262	218	2,957
	County Totals	CPS	231	212	171	240	334	291	274	310	237	336	307	344	277	3,564
		CWS	123	79	72	93	133	121	103	150	132	124	132	142	99	1,503
		Total	354	291	243	333	467	412	377	460	369	460	439	486	376	5,067
BURLINGTON	Burlington East	CPS	115	117	93	93	131	124	128	132	150	128	142	119	117	1,589
		CWS	45	37	33	31	53	38	38	41	41	43	46	45	34	525
		Total	160	154	126	124	184	162	166	173	191	171	188	164	151	2,114
	Burlington West	CPS	114	100	83	113	124	121	123	123	133	122	109	137	96	1,498
		CWS	30	30	37	33	40	30	29	42	37	44	33	50	41	476
		Total	144	130	120	146	164	151	152	165	170	166	142	187	137	1,974
	County Totals	CPS	229	217	176	206	255	245	251	255	283	250	251	256	213	3,087
		CWS	75	67	70	64	93	68	67	83	78	87	79	95	75	1,001
		Total	304	284	246	270	348	313	318	338	361	337	330	351	288	4,088
CAMDEN	Camden Central	CPS	109	113	109	103	116	110	104	137	98	146	118	104	112	1,479
		CWS	33	27	27	36	41	27	27	31	34	34	33	33	27	410
		Total	142	140	136	139	157	137	131	168	132	180	151	137	139	1,889
	Camden East	CPS	113	99	99	106	110	103	81	95	83	123	107	122	91	1,332
		CWS	41	32	36	44	39	29	26	35	21	38	31	34	27	433
		Total	154	131	135	150	149	132	107	130	104	161	138	156	118	1,765
	Camden North	CPS	115	80	74	91	119	94	96	110	111	110	121	117	93	1,331
		CWS	44	26	33	34	42	31	19	36	42	43	30	34	26	440
		Total	159	106	107	125	161	125	115	146	153	153	151	151	119	1,771
	Camden South	CPS	86	72	85	98	108	89	91	103	73	97	95	118	77	1,192
		CWS	23	23	22	31	31	32	25	30	23	28	24	26	31	349
		Total	109	95	107	129	139	121	116	133	96	125	119	144	108	1,541
	County Totals	CPS	423	364	367	398	453	396	372	445	365	476	441	461	373	5,334
		CWS	141	108	118	145	153	119	97	132	120	143	118	127	111	1,632
		Total	564	472	485	543	606	515	469	577	485	619	559	588	484	6,966
CAPE MAY	Cape May	CPS	76	60	73	89	64	56	60	79	63	58	75	57	63	873
		CWS	21	20	12	20	23	17	8	24	20	16	13	13	19	226
		Total	97	80	85	109	87	73	68	103	83	74	88	70	82	1,099
	County Totals	CPS	76	60	73	89	64	56	60	79	63	58	75	57	63	873
		Total	97	80	85	109	87	73	68	103	83	74	88	70	82	1,099
CUMBERLAND	Cumberland East	CPS	58	47	44	60	55	47	45	43	54	68	58	49	50	678
		CWS	15	15	13	15	18	15	13	17	9	13	12	25	24	204
		Total	73	62	57	75	73	62	58	60	63	81	70	74	74	882
	Cumberland West	CPS	111	82	118	118	116	106	116	119	100	124	103	116	118	1,447
		CWS	18	15	30	32	43	36	26	39	28	30	29	29	22	377
		Total	129	97	148	150	159	142	142	158	128	154	132	145	140	1,824
	County Totals	CPS	169	129	162	178	171	153	161	162	154	192	161	165	168	2,125
		CWS	33	30	43	47	61	51	39	56	37	43	41	54	46	581
		Total	202	159	205	225	232	204	200	218	191	235	202	219	214	2,706



Table 5: Monthly Count of CPS Reports and CWS Referrals Assigned to CP&P Local Offices

County	Local Office	Type of Referral													Total	
			Jun 2018	Jul 2018	Aug 2018	Sep 2018	Oct 2018	Nov 2018	Dec 2018	Jan 2019	Feb 2019	Mar 2019	Apr 2019	May 2019		June 2019
ESSEX	Essex Central	CPS	95	70	92	68	97	103	90	107	97	107	89	102	93	1,210
		CWS	23	21	23	41	35	35	26	37	33	42	26	34	36	412
		Total	118	91	115	109	132	138	116	144	130	149	115	136	129	1,622
	Essex North	CPS	62	41	61	65	82	74	65	72	76	73	76	85	62	894
		CWS	35	18	15	28	31	25	20	32	25	24	21	29	32	335
		Total	97	59	76	93	113	99	85	104	101	97	97	114	94	1,229
	Essex South	CPS	92	46	76	63	80	70	77	86	76	94	90	94	71	1015
		CWS	25	27	17	28	44	24	20	27	46	35	39	32	23	387
		Total	117	73	93	91	124	94	97	113	122	129	129	126	94	1402
	Newark Center City	CPS	91	75	81	102	123	91	98	103	96	89	96	128	85	1258
		CWS	33	26	26	27	44	36	25	38	32	33	31	34	31	416
		Total	124	101	107	129	167	127	123	141	128	122	127	162	116	1674
	Newark Northeast	CPS	81	71	84	76	117	105	101	111	83	112	104	118	89	1252
		CWS	42	24	35	29	58	30	24	28	26	35	38	29	25	423
		Total	123	95	119	105	175	135	125	139	109	147	142	147	114	1675
Newark South	CPS	106	95	76	93	111	92	102	118	103	116	98	121	118	1349	
	CWS	28	31	36	46	37	27	46	39	30	35	32	45	28	460	
	Total	134	126	112	139	148	119	148	157	133	151	130	166	146	1809	
County Totals	CPS	527	398	470	467	610	535	533	597	531	591	553	648	518	6978	
	CWS	186	147	152	199	249	177	161	201	192	204	187	203	175	2433	
	Total	713	545	622	666	859	712	694	798	723	795	740	851	693	9411	
GLOUCESTER	Gloucester East	CPS	79	75	76	86	104	85	70	108	88	104	101	134	114	1224
		CWS	18	20	31	22	41	25	30	29	28	29	42	33	23	371
		Total	97	95	107	108	145	110	100	137	116	133	143	167	137	1595
	Gloucester West	CPS	100	82	101	79	92	95	105	130	101	112	129	139	105	1370
		CWS	34	23	21	28	23	30	28	35	33	27	24	35	23	364
		Total	134	105	122	107	115	125	133	165	134	139	153	174	128	1734
	County Totals	CPS	179	157	177	165	196	180	175	238	189	216	230	273	219	2594
CWS		52	43	52	50	64	55	58	64	61	56	66	68	46	735	
Total		231	200	229	215	260	235	233	302	250	272	296	341	265	3329	
HUDSON	Hudson Central	CPS	93	83	89	93	141	91	117	107	104	129	113	116	101	1377
		CWS	57	38	39	43	43	37	41	47	37	46	35	20	19	502
		Total	150	121	128	136	184	128	158	154	141	175	148	136	120	1879
	Hudson North	CPS	62	34	51	71	92	62	72	87	67	81	77	95	65	916
		CWS	22	19	14	26	33	28	27	40	28	28	30	33	26	354
		Total	84	53	65	97	125	90	99	127	95	109	107	128	91	1270
	Hudson South	CPS	55	38	43	41	60	48	48	55	47	66	52	63	51	667
		CWS	19	16	17	34	23	35	22	15	22	25	21	44	36	329
		Total	74	54	60	75	83	83	70	70	69	91	73	107	87	996
	Hudson West	CPS	72	72	59	84	94	87	72	87	69	93	97	105	102	1093
		CWS	32	30	30	34	54	32	26	37	36	50	32	34	22	449
		Total	104	102	89	118	148	119	98	124	105	143	129	139	124	1542
	County Totals	CPS	282	227	242	289	387	288	309	336	287	369	339	379	319	4053
		CWS	130	103	100	137	153	132	116	139	123	149	118	131	103	1634
		Total	412	330	342	426	540	420	425	475	410	518	457	510	422	5687
HUNTERDON	Hunterdon	CPS	43	37	40	40	56	44	47	33	33	52	42	53	47	567
		CWS	13	11	9	17	19	14	12	15	19	19	8	14	17	187
		Total	56	48	49	57	75	58	59	48	52	71	50	67	64	754
	County Totals	CPS	43	37	40	40	56	44	47	33	33	52	42	53	47	567
		CWS	13	11	9	17	19	14	12	15	19	19	8	14	17	187
Total	56	48	49	57	75	58	59	48	52	71	50	67	64	754		
MERCER	Mercer North	CPS	107	81	107	84	139	113	110	117	114	125	110	114	95	1416
		CWS	32	31	28	25	57	50	31	39	43	41	44	45	46	512
		Total	139	112	135	109	196	163	141	156	157	166	154	159	141	1928
	Mercer South	CPS	105	86	78	89	125	95	109	101	104	125	107	97	122	1343
		CWS	30	25	34	33	44	40	33	41	40	40	34	36	35	465
		Total	135	111	112	122	169	135	142	142	144	165	141	133	157	1808
	County Totals	CPS	212	167	185	173	264	208	219	218	218	250	217	211	217	2759
CWS		62	56	62	58	101	90	64	80	83	81	78	81	81	977	
Total		274	223	247	231	365	298	283	298	301	331	295	292	298	3736	

Data in this report is preliminary and may differ from any final report. This report is produced to ensure continuous quality improvement throughout DCF.



Table 5: Monthly Count of CPS Reports and CWS Referrals Assigned to CP&P Local Offices

County	Local Office	Type of Referral													Total	
			Jun 2018	Jul 2018	Aug 2018	Sep 2018	Oct 2018	Nov 2018	Dec 2018	Jan 2019	Feb 2019	Mar 2019	Apr 2019	May 2019		June 2019
MIDDLESEX	Middlesex Central	CPS	101	78	62	75	116	93	102	125	113	126	91	110	85	1277
		CWS	36	32	28	30	31	28	33	33	38	25	36	37	23	410
		Total	137	110	90	105	147	121	135	158	151	151	127	147	108	1687
	Middlesex Coastal	CPS	123	111	100	120	161	110	120	148	130	127	133	149	113	1645
		CWS	42	24	37	39	49	39	42	49	43	46	34	39	37	520
		Total	165	135	137	159	210	149	162	197	173	173	167	188	150	2165
	Middlesex West	CPS	128	83	88	129	168	108	138	126	116	132	116	125	110	1567
		CWS	44	30	51	40	38	48	37	46	36	49	39	45	44	547
	County Totals	CPS	352	272	250	324	445	311	360	399	359	385	340	384	308	4489
		CWS	122	86	116	109	118	115	112	128	117	120	109	121	104	1477
Total		474	358	366	433	563	426	472	527	476	505	449	505	412	5966	
MONMOUTH	Monmouth North	CPS	152	118	107	159	165	133	158	190	128	181	147	203	142	1983
		CWS	34	36	36	61	62	42	49	64	49	57	49	63	55	657
		Total	186	154	143	220	227	175	207	254	177	238	196	266	197	2640
	Monmouth South	CPS	113	112	91	149	149	151	100	145	114	138	120	118	136	1636
		CWS	42	36	43	41	50	54	45	34	42	48	43	40	43	561
		Total	155	148	134	190	199	205	145	179	156	186	163	158	179	2197
	County Totals	CPS	265	230	198	308	314	284	258	335	242	319	267	321	278	3619
		CWS	76	72	79	102	112	96	94	98	91	105	92	103	98	1218
Total	341	302	277	410	426	380	352	433	333	424	359	424	376	4837		
MORRIS	Morris East	CPS	66	79	74	75	100	84	91	84	75	74	94	107	69	1072
		CWS	25	24	20	24	42	19	37	49	22	21	21	36	16	356
		Total	91	103	94	99	142	103	128	133	97	95	115	143	85	1428
	Morris West	CPS	77	75	74	84	118	92	89	89	82	106	84	125	87	1182
		CWS	31	26	18	32	32	29	25	42	36	43	42	35	28	419
		Total	108	101	92	116	150	121	114	131	118	149	126	160	115	1601
	County Totals	CPS	143	154	148	159	218	176	180	173	157	180	178	232	156	2254
		CWS	56	50	38	56	74	48	62	91	58	64	63	71	44	775
Total	199	204	186	215	292	224	242	264	215	244	241	303	200	3029		
OCEAN	Ocean North	CPS	144	163	143	154	203	178	163	165	157	179	209	219	148	2225
		CWS	51	34	38	40	68	60	46	65	48	53	53	63	40	659
		Total	195	197	181	194	271	238	209	230	205	232	262	282	188	2884
	Ocean South	CPS	167	124	135	160	166	170	160	147	147	163	148	140	157	1984
		CWS	36	36	55	32	45	42	39	51	30	45	50	37	41	539
		Total	203	160	190	192	211	212	199	198	177	208	198	177	198	2523
	County Totals	CPS	311	287	278	314	369	348	323	312	304	342	357	359	305	4209
		CWS	87	70	93	72	113	102	85	116	78	98	103	100	81	1198
Total	398	357	371	386	482	450	408	428	382	440	460	459	386	5407		
PASSAIC	Passaic Central	CPS	163	108	128	164	207	177	157	192	160	181	195	198	157	2187
		CWS	54	43	51	55	93	66	68	66	59	94	71	79	55	854
		Total	217	151	179	219	300	243	225	258	219	275	266	277	212	3041
	Passaic North	CPS	143	104	147	128	189	158	146	148	124	181	172	188	160	1988
		CWS	63	52	57	74	78	60	67	76	51	71	47	70	59	825
		Total	206	156	204	202	267	218	213	224	175	252	219	258	219	2813
	County Totals	CPS	306	212	275	292	396	335	303	340	284	362	367	386	317	4175
		CWS	117	95	108	129	171	126	135	142	110	165	118	149	114	1679
Total	423	307	383	421	567	461	438	482	394	527	485	535	431	5854		
SALEM	Salem	CPS	62	52	56	73	68	53	53	77	50	64	71	63	40	782
		CWS	17	13	21	31	22	19	17	20	21	11	20	14	17	243
		Total	79	65	77	104	90	72	70	97	71	75	91	77	57	1025
	County Totals	CPS	62	52	56	73	68	53	53	77	50	64	71	63	40	782
		CWS	17	13	21	31	22	19	17	20	21	11	20	14	17	243
Total	79	65	77	104	90	72	70	97	71	75	91	77	57	1025		
SOMERSET	Somerset	CPS	155	106	93	125	153	137	128	122	122	161	116	128	121	1667
		CWS	34	35	35	30	47	44	37	38	36	35	42	39	34	486
		Total	189	141	128	155	200	181	165	160	158	196	158	167	155	2153
	County Totals	CPS	155	106	93	125	153	137	128	122	122	161	116	128	121	1667
		CWS	34	35	35	30	47	44	37	38	36	35	42	39	34	486
Total	189	141	128	155	200	181	165	160	158	196	158	167	155	2153		

Data in this report is preliminary and may differ from any final report. This report is produced to ensure continuous quality improvement throughout DCF.

Table 5: Monthly Count of CPS Reports and CWS Referrals Assigned to CP&P Local Offices

County	Local Office	Type of Referral													Total	
			Jun 2018	Jul 2018	Aug 2018	Sep 2018	Oct 2018	Nov 2018	Dec 2018	Jan 2019	Feb 2019	Mar 2019	Apr 2019	May 2019		June 2019
SUSSEX	Sussex	CPS	94	62	60	72	90	64	67	77	88	87	75	81	77	994
		CWS	24	20	22	27	30	17	30	23	34	29	19	33	27	335
		Total	118	82	82	99	120	81	97	100	122	116	94	114	104	1329
	County Totals	CPS	94	62	60	72	90	64	67	77	88	87	75	81	77	994
		CWS	24	20	22	27	30	17	30	23	34	29	19	33	27	335
		Total	118	82	82	99	120	81	97	100	122	116	94	114	104	1329
UNION	Union Central	CPS	78	67	54	76	98	85	81	104	87	99	100	95	95	1119
		CWS	25	23	21	25	33	26	34	43	27	32	31	29	25	374
		Total	103	90	75	101	131	111	115	147	114	131	131	124	120	1493
	Union East	CPS	92	63	48	89	103	93	94	94	104	98	94	104	80	1156
		CWS	32	24	21	34	36	29	26	35	38	45	22	30	25	397
		Total	124	87	69	123	139	122	120	129	142	143	116	134	105	1553
	Union West	CPS	91	58	54	77	84	88	83	98	79	98	76	103	71	1060
		CWS	25	25	23	27	42	30	25	27	24	33	30	37	21	369
		Total	116	83	77	104	126	118	108	125	103	131	106	140	92	1429
	County Totals	CPS	261	188	156	242	285	266	258	296	270	295	270	302	246	3335
		CWS	82	72	65	86	111	85	85	105	89	110	83	96	71	1140
		Total	343	260	221	328	396	351	343	401	359	405	353	398	317	4475
WARREN	Warren	CPS	85	59	82	86	78	71	77	61	54	88	97	81	76	995
		CWS	25	28	23	32	27	22	27	28	19	30	34	23	26	344
		Total	110	87	105	118	105	93	104	89	73	118	131	104	102	1339
	County Totals	CPS	85	59	82	86	78	71	77	61	54	88	97	81	76	995
		CWS	25	28	23	32	27	22	27	28	19	30	34	23	26	344
		Total	110	87	105	118	105	93	104	89	73	118	131	104	102	1339
County CPS Referral Total		CPS	4,611	3,755	3,825	4,461	5,418	4,653	4,587	5,091	4,502	5,302	4,965	5,445	4,550	61,165
County CWS Referral Total		CWS	1,554	1,253	1,355	1,578	1,942	1,570	1,473	1,792	1,580	1,756	1,585	1,734	1,455	20,627
County Referral Total		Total	6,165	5,008	5,180	6,039	7,360	6,223	6,060	6,883	6,082	7,058	6,550	7,179	6,005	81,792
Central Region IAIU		CPS	64	40	57	39	67	63	47	61	47	61	66	82	57	751
		CWS	0	0	0	0	0	0	0	0	0	0	0	0	0	0
		Total	64	40	57	39	67	63	47	61	47	61	66	82	57	751
Metro Region IAIU		CPS	60	40	38	50	65	61	51	55	47	62	45	64	41	679
		CWS	0	0	0	0	0	0	0	0	0	0	0	0	0	0
		Total	60	40	38	50	65	61	51	55	47	62	45	64	41	679
Northern Region IAIU		CPS	60	42	34	63	71	70	64	58	74	83	57	89	64	829
		CWS	0	0	0	0	0	0	0	0	0	0	0	0	0	0
		Total	60	42	34	63	71	70	64	58	74	83	57	89	64	829
Southern Region IAIU		CPS	71	61	76	67	100	58	71	92	70	85	90	90	69	1,000
		CWS	0	0	0	0	0	0	0	0	0	0	0	0	0	0
		Total	71	61	76	67	100	58	71	92	70	85	90	90	69	1,000
IAIU CPS Subtotal		CPS	255	183	205	219	303	252	233	266	238	291	258	325	231	3,259
IAIU CWS Subtotal		CWS	0	0	0	0	0	0	0	0	0	0	0	0	0	
IAIU Subtotal		Total	255	183	205	219	303	252	233	266	238	291	258	325	231	3,259
County and IAIU CPS Subtotal		CPS	4,866	3,938	4,030	4,680	5,721	4,905	4,820	5,357	4,740	5,593	5,223	5,770	4,781	64,424
County and IAIU CWS Subtotal		CWS	1,554	1,253	1,355	1,578	1,942	1,570	1,473	1,792	1,580	1,756	1,585	1,734	1,455	20,627
Unable to Determine⁽¹⁾		Total	137	128	122	123	135	117	121	149	119	151	132	127	147	1,708
Other Offices		Total	6	0	3	1	3	1	4	3	0	1	3	3	0	28
Grand Total		Total	6,563	5,319	5,510	6,382	7,801	6,593	6,418	7,301	6,439	7,501	6,943	7,634	6,383	86,787

⁽¹⁾CPS Reports or CWS Referrals not assigned to an office through the Assignment Designee, but were assigned to an office for an assessment or investigation.