



Child Protection and Permanency

Monthly Screening and Investigation Report July 2020

Christine Norbut Beyer, MSW
Commissioner



Table of Contents

Table 1: NJ State Central Registry Activity: Monthly Child Abuse and Neglect Hotline Calls, Intakes and Assignments to Child Protection & Permanency (CP&P) Offices

Chart 1: CP&P Annual Trends in Child Protection Services (CPS) Reports and Child Welfare Services (CWS) Referrals

Table 2: Assignments to CP&P Offices: CPS Reports and CWS Referrals

Table 3: Source of CPS Reports and CWS Referrals

Table 4: Monthly Count of CPS Reports and CWS Referrals Assigned to Counties

Table 5: Monthly Count of CPS Reports and CWS Referrals Assigned to CP&P Local Offices

CP&P Annual Trends in CPS Reports and CWS Referrals

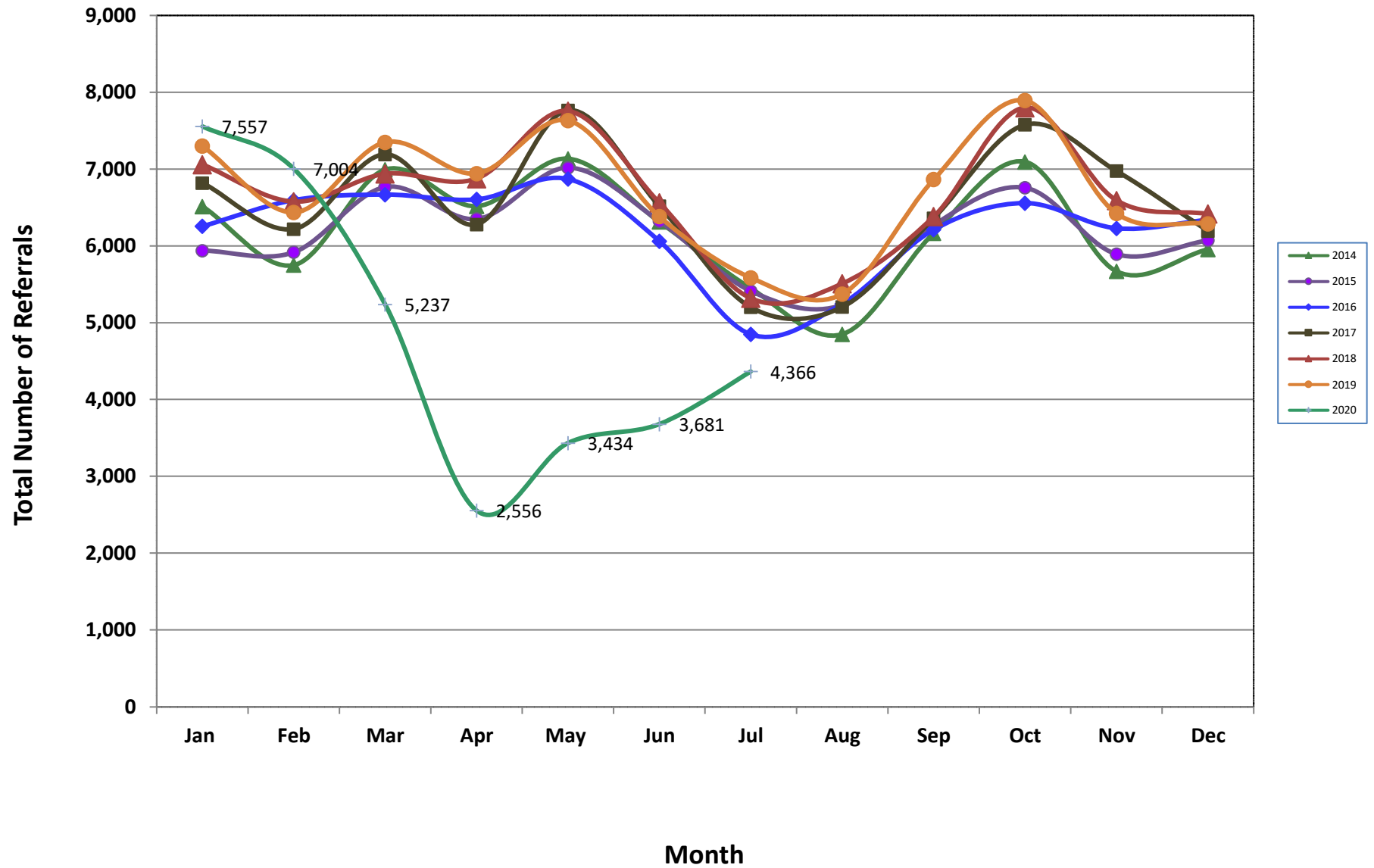


Table 1: NJ State Central Registry Activity: Monthly Child Abuse and Neglect Hotline Calls, Intakes and Assignments to CP&P Offices^{1,2,7}

2019-2020	Hotline Call Activity				Intakes Recorded in NJ SPIRIT ^{6,8}														Assignments to CP&P Offices				
	Total Calls to SCR ³	Abandon Calls ⁴	Average Time to Answer (seconds)	Resulting NJS Intakes ⁵	CPS Reports		CWS Referrals		No Action Required (NAR)		Related Information (RI)		Information & Referral (I&R)		Information Only (IO)		Unusual Incident (UIRS)		CPS Reports		CWS Referrals		Total
					n	%	n	%	n	%	n	%	n	%	n	%	n	%	n	%	n	%	
July 2019	12,135	874	73	12,821	4,277	33.4%	1,309	10.2%	267	2.1%	3,250	25.3%	1,452	11.3%	2,266	17.7%	0	17.7%	4,277	76.6%	1,309	23.4%	5,586
August 2019	11,044	482	38	12,291	4,068	33.1%	1,303	10.6%	222	1.8%	3,113	25.3%	1,381	11.2%	2,204	17.9%	0	17.9%	4,068	75.7%	1,306	24.3%	5,374
September 2019	13,737	991	72	14,995	5,315	35.4%	1,551	10.3%	266	1.8%	3,695	24.6%	1,790	11.9%	2,378	15.9%	0	15.9%	5,315	77.4%	1,551	22.6%	6,866
October 2019	15,981	1,270	95	16,503	5,968	36.2%	1,923	11.7%	260	1.6%	4,039	24.5%	1,959	11.9%	2,354	14.3%	0	14.3%	5,968	75.6%	1,926	24.4%	7,894
November 2019	12,937	1,128	92	14,799	4,991	33.7%	1,434	9.7%	205	1.4%	3,681	24.9%	1,741	11.8%	2,747	18.6%	0	18.6%	4,991	77.7%	1,432	22.3%	6,423
December 2019	12,832	1,147	102	13,166	4,855	36.9%	1,432	10.9%	203	1.5%	3,204	24.3%	1,478	11.2%	1,994	15.1%	0	15.1%	4,855	77.2%	1,434	22.8%	6,289
January 2020	15,893	2,070	141	15,573	5,715	36.7%	1,841	11.8%	227	1.5%	3,717	23.9%	1,976	12.7%	2,097	13.5%	0	13.5%	5,715	75.6%	1,842	24.4%	7,557
February 2020	14,714	1,744	150	14,684	5,380	36.6%	1,625	11.1%	226	1.5%	3,605	24.6%	1,854	12.6%	1,994	13.6%	0	0.0%	5,380	76.8%	1,624	23.2%	7,004
March 2020	12,263	1,262	11	12,398	4,171	33.6%	1,063	8.6%	199	1.6%	3,075	24.8%	1,885	15.2%	2,005	16.2%	5	0.0%	4,172	79.7%	1,065	20.3%	5,237
April 2020	7,500	548	76	7,917	2,149	27.1%	407	5.1%	196	2.5%	1,852	23.4%	1,866	23.6%	1,447	18.3%	0	0.0%	2,149	84.1%	407	15.9%	2,556
May 2020	9,654	1,808	249	9,402	2,897	30.8%	537	5.7%	137	1.5%	2,342	24.9%	1,974	21.0%	1,515	16.1%	0	0.0%	2,897	84.4%	537	15.6%	3,434
June 2020	10,871	3,782	305	9,131	3,045	33.3%	636	7.0%	133	1.5%	2,281	25.0%	1,554	17.0%	1,482	16.2%	0	0.0%	3,045	82.7%	636	17.3%	3,681
July 2020	11,649	1,628	237	11,499	3,628	31.6%	738	6.4%	145	1.3%	2,892	25.2%	1,815	15.8%	2,281	19.8%	0	0.0%	3,628	83.1%	738	16.9%	4,366
	12,401	1,441	126	12,706	4,343	34.2%	1,215	9.6%	207	1.6%	3,134	24.7%	1,748	13.8%	2,059	16.2%	0	0.0%	4,343	78.1%	1,216	21.9%	5,559
Overall Total	161,210	18,734		165,179	56,459		15,799		2,686		40,746		22,725		26,764		5		56,460	78.1%	15,807	21.9%	72,267

¹Comes from three distinct sources: (1) the Automatic Call Distribution (ACD) phone system; which keeps a count of the number of calls and call routing; (2) Monthly NJSpirit Intakes; which record decision making on calls received by hotline screeners, and (3) NJSpirit extracts of assigned CWS Referrals and CPS Reports.

²The number of Intakes, CPS Reports, and CWS Referrals are based on an extract from NJSpirit.

Data extracted by the Office of Research, Evaluation, and Reporting on **August 10, 2020** includes all Intakes, CPS Reports, and CWS Referrals received from **July 01, 2020** through **July 31, 2020**.

³The number calls received through the ACD System that were directed to a screener from any call-in phone number.

⁴The number of calls received through the ACD System that are abandoned either while waiting in queue or while ringing.

⁵The number of Intakes entered in NJSpirit from the number of calls received.

⁶The number of Intakes recorded in NJSpirit, by type of Intake. There is not a one-to-one relationship between an ACD call and an Intake; multiple calls to State Central Registry (SCR) may result in a single Intake, or one call may result in multiple Intakes.

⁷Intake: The process of documenting: a report of alleged abuse or neglect of a child (CPS); a request for services on behalf of a child, or a referral of a child for services (CWS); a call in which the caller provides additional or clarifying information about a current service case or active investigation (RI); informing a caller of, or referring a caller to, services available from other private or public sources (I&R); a call that requires no action by CP&P (NAR); or a response to a simple inquiry (IO).

Table 2: Assignments to CP&P Offices: CPS Reports and CWS Referrals¹

Intake Date ³		CPS Reports ²	CWS Referrals ²	Total Assignments ²
2015	Jan 2015	4,549	1,391	5,940
	Feb 2015	4,574	1,345	5,919
	Mar 2015	5,187	1,580	6,767
	Apr 2015	4,967	1,384	6,351
	May 2015	5,457	1,561	7,018
	Jun 2015	4,887	1,436	6,323
	Jul 2015	4,140	1,273	5,413
	Aug 2015	3,978	1,256	5,234
	Sep 2015	4,776	1,495	6,271
	Oct 2015	5,139	1,619	6,758
	Nov 2015	4,417	1,477	5,894
	Dec 2015	4,530	1,544	6,074
	Total	56,601	17,361	73,962
2016	Jan 2016	4,686	1,571	6,257
	Feb 2016	4,974	1,622	6,596
	Mar 2016	5,000	1,669	6,669
	Apr 2016	5,065	1,542	6,607
	May 2016	5,238	1,633	6,871
	Jun 2016	4,602	1,461	6,063
	Jul 2016	3,663	1,187	4,850
	Aug 2016	3,941	1,307	5,248
	Sep 2016	4,654	1,559	6,213
	Oct 2016	4,935	1,622	6,557
	Nov 2016	4,677	1,552	6,229
	Dec 2016	4,762	1,580	6,342
	Total	56,197	18,305	74,502
2017	Jan 2017	5,111	1,708	6,819
	Feb 2017	4,716	1,504	6,220
	Mar 2017	5,349	1,843	7,192
	Apr 2017	4,790	1,490	6,280
	May 2017	5,847	1,919	7,766
	Jun 2017	4,853	1,665	6,518
	Jul 2017	3,814	1,389	5,203
	Aug 2017	3,866	1,340	5,206
	Sep 2017	4,719	1,643	6,362
	Oct 2017	5,613	1,966	7,579
	Nov 2017	5,223	1,753	6,976
	Dec 2017	4,601	1,594	6,195
	Total	58,502	19,814	78,316

Table 2: Assignments to CP&P Offices: CPS Reports and CWS Referrals¹

Intake Date ³		CPS Reports ²	CWS Referrals ²	Total Assignments ²
2018	Jan 2018	5,276	1,784	7,060
	Feb 2018	4,933	1,644	6,577
	Mar 2018	5,212	1,727	6,939
	Apr 2018	5,275	1,601	6,876
	May 2018	5,920	1,836	7,756
	Jun 2018	4,948	1,615	6,563
	Jul 2018	4,011	1,308	5,319
	Aug 2018	4,102	1,408	5,510
	Sep 2018	4,748	1,634	6,382
	Oct 2018	5,790	2,011	7,801
	Nov 2018	4,973	1,620	6,593
	Dec 2018	4,891	1,527	6,418
	Total	60,079	19,715	79,794
2019	Jan 2019	5,443	1,858	7,301
	Feb 2019	4,811	1,628	6,439
	Mar 2019	5,677	1,824	7,501
	Apr 2019	5,313	1,630	6,943
	May 2019	5,853	1,781	7,634
	Jun 2019	4,874	1,509	6,383
	Jul 2019	4,277	1,309	5,586
	Aug 2019	4,068	1,306	5,374
	Sep 2019	5,315	1,551	6,866
	Oct 2019	5,968	1,926	7,894
	Nov 2019	4,991	1,432	6,423
	Dec 2019	4,855	1,434	6,289
	Total	61,445	1,434	6,289
2020	Jan 2020	5,715	1,842	7,557
	Feb 2020	5,380	1,624	7,004
	Mar 2020	4,172	1,065	5,237
	Apr 2020	2,149	407	2,556
	May 2020	2,897	537	3,434
	Jun 2020	3,045	636	3,681
	Jul 2020	3,628	738	4,366
	Total	26,986	6,849	33,835
Grand Total		319,810	101,232	421,042

Table 3: Source of CPS Reports and CWS Referrals

CPS Reports and CWS Referrals	Source	July 2019	Aug 2019	Sep 2019	Oct 2019	Nov 2019	Dec 2019	Jan 2020	Feb 2020	Mar 2020	Apr 2020	May 2020	Jun 2020	Jul 2020		13 Month Total	
	School Staff	211	90	1,479	2,314	1,703	1,562	2,327	2,148	1,188	143	210	119	70	2%	13,564	19%
	Healthcare Provider	964	917	963	1,059	886	923	990	937	760	499	656	775	784	18%	11,113	15%
	Law Enforcement	1,416	1,320	1,432	1,425	1,260	1,247	1,295	1,349	1,197	792	1,086	1,140	1,440	33%	16,399	23%
	Government Agency	448	391	417	457	343	367	452	342	240	134	198	238	274	6%	4,301	6%
	Parent	549	583	534	529	425	448	509	435	395	219	281	326	400	9%	5,633	8%
	Relative/Friend/Neighbor	482	479	505	427	384	388	411	334	345	232	296	326	392	9%	5,001	7%
	Anonymous	493	544	615	674	556	508	600	603	437	222	284	294	416	10%	6,246	9%
	CP&P	126	129	102	110	82	89	106	74	67	28	31	42	47	1%	1,033	1%
	Court/Legal	189	223	180	207	160	158	210	162	104	40	59	50	80	2%	1,822	3%
	Community Group/Individual	279	268	257	310	287	227	317	279	199	111	143	157	193	4%	3,027	4%
	Facility Staff (incl Correctional Facility)	88	92	74	79	67	83	79	93	40	21	41	43	63	1%	863	1%
	Child (Self)	50	47	45	34	27	37	28	21	25	7	17	17	25	1%	380	1%
	Other	277	272	249	250	235	242	213	210	227	105	130	149	175	4%	2,734	4%
	Daycare/Babysitter	14	19	14	19	8	10	20	17	13	3	2	5	7	0%	151	0%
Total	6,383	6,383	6,866	7,894	6,423	6,289	7,557	7,004	5,237	2,556	3,434	3,681	4,366		72,267		

Table 4: Monthly Count of CPS Reports and CWS Referrals Assigned to Counties

County	July 2019	Aug 2019	Sep 2019	Oct 2019	Nov 2019	Dec 2019	Jan 2020	Feb 2020	Mar 2020	Apr 2020	May 2020	Jun 2020	Jul 2020	Average Number of Assignments Last 13 Months	Jun 20 to Jul 20 Numerical Difference
	July 2019	Aug 2019	Sep 2019	Oct 2019	Nov 2019	Dec 2019	Jan 2020	Feb 2020	Mar 2020	Apr 2020	May 2020	Jun 2020	Jul 2020		
Atlantic	235	235	282	302	258	261	292	298	244	121	161	180	214	237	34
Bergen	273	285	402	471	423	375	457	418	281	145	189	194	232	319	38
Burlington	262	264	352	385	305	285	383	368	256	133	181	185	231	276	46
Camden	442	422	572	625	523	508	603	581	437	216	305	325	362	455	37
Cape May	96	80	112	105	78	78	85	58	70	33	50	66	72	76	6
Cumberland	187	158	206	256	216	221	238	216	171	96	116	130	145	181	15
Essex	604	622	713	848	703	651	790	735	525	249	364	366	440	585	74
Gloucester	250	232	259	279	271	266	285	297	221	111	160	177	198	231	21
Hudson	346	307	400	535	437	415	558	449	347	137	226	199	282	357	83
Hunterdon	42	48	74	60	63	66	67	48	39	22	30	24	33	47	9
Mercer	264	265	276	337	290	267	344	279	210	106	144	164	197	242	33
Middlesex	337	357	489	558	426	488	580	475	405	205	231	283	310	396	27
Monmouth	295	287	378	437	350	349	411	381	301	166	196	233	263	311	30
Morris	181	187	266	255	226	212	264	273	194	85	124	137	152	197	15
Ocean	385	337	428	525	387	406	482	446	355	177	257	264	336	368	72
Passaic	356	327	443	519	390	409	456	460	353	143	213	219	267	350	48
Salem	83	85	92	98	78	69	79	82	75	35	44	53	56	71	3
Somerset	155	114	180	202	155	146	197	189	126	66	92	82	114	140	32
Sussex	83	107	125	129	91	104	114	116	73	47	48	51	86	90	35
Union	276	252	321	400	345	327	383	383	246	137	147	190	181	276	-9
Warren	82	88	97	96	93	82	98	101	65	54	50	56	75	80	19
County Subtotals	5,234	5,059	6,467	7,422	6,108	5,985	7,166	6,653	4,994	2,484	3,328	3,578	4,246	5,286	668
Central Region IAIU	58	41	60	70	49	48	67	64	34	10	6	23	17	42	-6
Metro Region IAIU	36	42	43	80	45	41	46	69	33	3	11	2	13	36	11
Northern Region IAIU	53	37	68	77	45	45	59	42	44	6	12	10	14	39	4
Southern Region IAIU	66	57	83	75	59	62	82	61	51	12	18	20	23	51	3
IAIU Subtotals	213	177	254	302	198	196	254	236	162	31	47	55	67	169	12
¹ Unable to Determine	138	138	145	170	117	108	135	113	79	39	59	48	51	103	3
Other Offices	1	0	0	0	0	0	2	2	2	2	0	0	2	1	2
Grand Total	5,586	5,374	6,866	7,894	6,423	6,289	7,557	7,004	5,237	2,556	3,434	3,681	4,366	5,559	685

¹CPS Reports or CWS Referrals not assigned to an office through the Assignment Designee, but were assigned to an office for an assessment or investigation.



Table 5: Monthly Count of CPS Reports and CWS Referrals Assigned to CP&P Local Offices

County	Local Office	Type of Referral														Total
			July 2019	Aug 2019	Sep 2019	Oct 2019	Nov 2019	Dec 2019	Jan 2020	Feb 2020	Mar 2020	Apr 2020	May 2020	Jun 2020	Jul 2020	
ATLANTIC	Atlantic East	CPS	110	102	127	134	117	133	120	116	115	55	70	82	96	1,377
		CWS	34	30	46	38	26	31	33	55	30	9	16	25	24	
		Total	144	132	173	172	143	164	153	171	145	64	86	107	120	
	Atlantic West	CPS	69	77	76	86	99	79	101	95	82	50	64	57	75	1,010
		CWS	22	26	33	44	16	18	38	32	17	7	11	16	19	
		Total	91	103	109	130	115	97	139	127	99	57	75	73	94	
	County Totals	CPS	179	179	203	220	216	212	221	211	197	105	134	139	171	2,387
		CWS	56	56	79	82	42	49	71	87	47	16	27	41	43	
		Total	235	235	282	302	258	261	292	298	244	121	161	180	214	
BERGEN	Bergen Central	CPS	91	98	131	150	137	102	145	135	81	55	66	66	85	1,342
		CWS	23	31	46	57	47	51	57	47	24	12	13	21	14	
		Total	114	129	177	207	184	153	202	182	105	67	79	87	99	
	Bergen South	CPS	121	117	166	192	174	171	182	179	126	67	90	92	104	1,781
		CWS	38	39	59	72	65	51	73	57	50	11	20	15	29	
		Total	159	156	225	264	239	222	255	236	176	78	110	107	133	
	County Totals	CPS	212	215	297	342	311	273	327	314	207	122	156	158	189	3,123
		CWS	61	70	105	129	112	102	130	104	74	23	33	36	43	
		Total	273	285	402	471	423	375	457	418	281	145	189	194	232	
BURLINGTON	Burlington East	CPS	127	108	126	145	114	109	147	142	99	55	74	95	80	1,421
		CWS	21	38	55	39	44	48	50	40	22	12	17	11	29	
		Total	148	146	181	184	158	157	197	182	121	67	91	106	109	
	Burlington West	CPS	85	92	133	153	113	96	143	141	106	51	76	68	99	1,356
		CWS	29	26	38	48	34	32	43	45	29	15	14	11	23	
		Total	114	118	171	201	147	128	186	186	135	66	90	79	122	
	County Totals	CPS	212	200	259	298	227	205	290	283	205	106	150	163	179	2,777
		CWS	50	64	93	87	78	80	93	85	51	27	31	22	52	
		Total	262	264	352	385	305	285	383	368	256	133	181	185	231	
CAMDEN	Camden Central	CPS	87	106	127	122	100	118	112	119	99	40	68	86	74	1,258
		CWS	16	22	27	40	28	24	43	29	14	12	11	15	21	
		Total	103	128	154	162	128	142	155	148	113	52	79	101	95	
	Camden East	CPS	83	70	103	111	114	100	94	102	82	45	54	59	67	1,084
		CWS	36	15	34	30	31	30	44	32	16	7	8	14	18	
		Total	119	85	137	141	145	130	138	134	98	52	62	73	85	
	Camden North	CPS	77	84	111	135	101	84	119	117	96	39	56	71	81	1,171
		CWS	32	25	47	40	37	26	31	28	26	9	15	12	13	
		Total	109	109	158	175	138	110	150	145	122	48	71	83	94	
	Camden South	CPS	83	68	91	113	88	96	125	122	82	54	73	59	71	1,125
		CWS	28	32	32	34	24	30	35	32	22	10	20	9	17	
		Total	111	100	123	147	112	126	160	154	104	64	93	68	88	
	County Totals	CPS	330	328	432	481	403	398	450	460	359	178	251	275	293	4,638
		CWS	112	94	140	144	120	110	153	121	78	38	54	50	69	
		Total	442	422	572	625	523	508	603	581	437	216	305	325	362	
CAPE MAY	Cape May	CPS	72	67	87	75	63	62	68	42	56	29	37	55	58	771
		CWS	24	13	25	30	15	16	17	16	14	4	13	11	14	
		Total	96	80	112	105	78	78	85	58	70	33	50	66	72	
	County Totals	CPS	72	67	87	75	63	62	68	42	56	29	37	55	58	771
		CWS	24	13	25	30	15	16	17	16	14	4	13	11	14	
CUMBERLAND	Cumberland East	CPS	45	50	51	59	47	61	57	52	44	24	40	44	37	611
		CWS	12	13	9	16	19	9	11	12	11	10	8	6	6	
		Total	57	63	60	75	66	70	68	64	55	34	48	50	43	
	Cumberland West	CPS	101	75	118	139	119	126	141	121	91	53	56	66	91	1,297
		CWS	29	20	28	42	31	25	29	31	25	9	12	14	11	
		Total	130	95	146	181	150	151	170	152	116	62	68	80	102	
	County Totals	CPS	146	125	169	198	166	187	198	173	135	77	96	110	128	1,908
		CWS	41	33	37	58	50	34	40	43	36	19	20	20	17	
		Total	187	158	206	256	216	221	238	216	171	96	116	130	145	

Data in this report is preliminary and may differ from any final report. This report is produced to ensure continuous quality improvement throughout DCF.



Table 5: Monthly Count of CPS Reports and CWS Referrals Assigned to CP&P Local Offices

County	Local Office	Type of Referral														Total
			July 2019	Aug 2019	Sep 2019	Oct 2019	Nov 2019	Dec 2019	Jan 2020	Feb 2020	Mar 2020	Apr 2020	May 2020	Jun 2020	Jul 2020	
ESSEX	Essex Central	CPS	94	88	111	121	96	98	106	99	71	58	60	58	61	1,121
		CWS	36	25	32	48	32	28	35	36	21	6	8	8	20	335
		Total	130	113	143	169	128	126	141	135	92	64	68	66	81	1,456
	Essex North	CPS	53	58	65	79	75	63	78	92	50	24	28	39	47	751
		CWS	17	31	27	24	23	22	30	26	19	2	18	8	9	256
		Total	70	89	92	103	98	85	108	118	69	26	46	47	56	1,007
	Essex South	CPS	48	46	66	66	83	71	87	64	65	22	32	46	40	736
		CWS	15	26	20	35	24	21	25	24	14	7	7	10	11	239
		Total	63	72	86	101	107	92	112	88	79	29	39	56	51	975
	Newark Center City	CPS	86	95	101	118	83	93	121	114	74	33	59	53	73	1103
		CWS	27	23	36	35	30	35	29	33	17	8	12	6	16	307
		Total	113	118	137	153	113	128	150	147	91	41	71	59	89	1410
	Newark Northeast	CPS	84	77	94	116	98	74	97	95	77	38	47	55	58	1010
		CWS	29	22	28	35	27	19	35	25	19	7	5	17	15	283
		Total	113	99	122	151	125	93	132	120	96	45	52	72	73	1293
Newark South	CPS	85	90	104	134	107	95	120	94	74	38	69	50	72	1132	
	CWS	30	41	29	37	25	32	27	33	24	6	19	16	18	337	
	Total	115	131	133	171	132	127	147	127	98	44	88	66	90	1469	
County Totals	CPS	450	454	541	634	542	494	609	558	411	213	295	301	351	5853	
	CWS	154	168	172	214	161	157	181	177	114	36	69	65	89	1757	
	Total	604	622	713	848	703	651	790	735	525	249	364	366	440	7610	
GLOUCESTER	Gloucester East	CPS	80	92	98	109	94	102	111	110	90	47	67	71	79	1150
		CWS	26	21	19	25	28	24	26	32	16	9	7	14	15	262
		Total	106	113	117	134	122	126	137	142	106	56	74	85	94	1412
	Gloucester West	CPS	115	85	120	114	122	107	116	117	88	45	76	75	87	1267
		CWS	29	34	22	31	27	33	32	38	27	10	10	17	17	327
		Total	144	119	142	145	149	140	148	155	115	55	86	92	104	1594
	County Totals	CPS	195	177	218	223	216	209	227	227	178	92	143	146	166	2417
CWS		55	55	41	56	55	57	58	70	43	19	17	31	32	589	
Total		250	232	259	279	271	266	285	297	221	111	160	177	198	3006	
HUDSON	Hudson Central	CPS	102	94	90	122	112	103	141	99	88	37	69	62	81	1200
		CWS	32	22	35	41	37	26	48	37	32	12	12	19	21	374
		Total	134	116	125	163	149	129	189	136	120	49	81	81	102	1574
	Hudson North	CPS	57	36	78	97	82	67	85	85	66	23	42	34	56	808
		CWS	21	22	20	29	26	23	33	25	15	10	13	12	14	263
		Total	78	58	98	126	108	90	118	110	81	33	55	46	70	1071
	Hudson South	CPS	37	45	46	65	50	49	77	62	44	11	31	23	36	576
		CWS	14	14	13	25	13	19	27	13	12	5	8	7	10	180
		Total	51	59	59	90	63	68	104	75	56	16	39	30	46	756
	Hudson West	CPS	58	53	86	110	87	101	108	100	65	34	45	35	47	929
		CWS	25	21	32	46	30	27	39	28	25	5	6	7	17	308
		Total	83	74	118	156	117	128	147	128	90	39	51	42	64	1237
	County Totals	CPS	254	228	300	394	331	320	411	346	263	105	187	154	220	3513
CWS		92	79	100	141	106	95	147	103	84	32	39	45	62	1125	
Total		346	307	400	535	437	415	558	449	347	137	226	199	282	4638	
HUNTERDON	Hunterdon	CPS	31	33	56	46	45	51	48	37	30	20	27	20	29	473
		CWS	11	15	18	14	18	15	19	11	9	2	3	4	4	143
		Total	42	48	74	60	63	66	67	48	39	22	30	24	33	616
	County Totals	CPS	31	33	56	46	45	51	48	37	30	20	27	20	29	473
		CWS	11	15	18	14	18	15	19	11	9	2	3	4	4	143
Total	42	48	74	60	63	66	67	48	39	22	30	24	33	616		
MERCER	Mercer North	CPS	81	90	113	100	111	106	120	108	89	45	50	76	87	1176
		CWS	45	24	30	52	27	36	30	41	17	14	16	11	16	359
		Total	126	114	143	152	138	142	150	149	106	59	66	87	103	1535
	Mercer South	CPS	112	116	107	140	108	102	144	102	85	36	65	65	81	1263
		CWS	26	35	26	45	44	23	50	28	19	11	13	12	13	345
		Total	138	151	133	185	152	125	194	130	104	47	78	77	94	1608
	County Totals	CPS	193	206	220	240	219	208	264	210	174	81	115	141	168	2439
CWS		71	59	56	97	71	59	80	69	36	25	29	23	29	704	
Total		264	265	276	337	290	267	344	279	210	106	144	164	197	3143	

Data in this report is preliminary and may differ from any final report. This report is produced to ensure continuous quality improvement throughout DCF.



Table 5: Monthly Count of CPS Reports and CWS Referrals Assigned to CP&P Local Offices

County	Local Office	Type of Referral														Total	
			July 2019	Aug 2019	Sep 2019	Oct 2019	Nov 2019	Dec 2019	Jan 2020	Feb 2020	Mar 2020	Apr 2020	May 2020	Jun 2020	Jul 2020		
SUSSEX	Sussex	CPS	64	84	104	97	71	74	85	93	55	41	38	45	75	926	
		CWS	19	23	21	32	20	30	29	23	18	6	10	6	11	248	
		Total	83	107	125	129	91	104	114	116	73	47	48	51	86	1174	
	County Totals	CPS	64	84	104	97	71	74	85	93	55	41	38	45	75	926	
		CWS	19	23	21	32	20	30	29	23	18	6	10	6	11	248	
		Total	83	107	125	129	91	104	114	116	73	47	48	51	86	1174	
UNION	Union Central	CPS	70	75	82	91	81	75	98	87	73	37	44	41	56	910	
		CWS	19	17	26	31	32	32	29	31	16	8	6	10	8	265	
		Total	89	92	108	122	113	107	127	118	89	45	50	51	64	1175	
	Union East	CPS	76	63	68	89	81	86	92	97	54	35	44	50	46	881	
		CWS	21	22	29	40	29	19	36	40	19	5	4	15	7	286	
		Total	97	85	97	129	110	105	128	137	73	40	48	65	53	1167	
	Union West	CPS	68	55	94	112	99	78	94	88	64	46	44	52	54	948	
		CWS	22	20	22	37	23	37	34	40	20	6	5	22	10	298	
		Total	90	75	116	149	122	115	128	128	84	52	49	74	64	1246	
	County Totals	CPS	214	193	244	292	261	239	284	272	191	118	132	143	156	2739	
		CWS	62	59	77	108	84	88	99	111	55	19	15	47	25	849	
		Total	276	252	321	400	345	327	383	383	246	137	147	190	181	3588	
WARREN	Warren	CPS	62	69	79	72	78	69	67	77	55	46	43	40	64	821	
		CWS	20	19	18	24	15	13	31	24	10	8	7	16	11	216	
		Total	82	88	97	96	93	82	98	101	65	54	50	56	75	1037	
	County Totals	CPS	62	69	79	72	78	69	67	77	55	46	43	40	64	821	
		CWS	20	19	18	24	15	13	31	24	10	8	7	16	11	216	
		Total	82	88	97	96	93	82	98	101	65	54	50	56	75	1037	
County CPS Referral Total		CPS	3,989	3,825	4,969	5,558	4,725	4,598	5,388	5,077	3,958	2,082	2,797	2,948	3,514	53,428	
County CWS Referral Total		CWS	1,245	1,234	1,498	1,864	1,383	1,387	1,778	1,576	1,036	402	531	630	732	15,296	
County Referral Total		Total	5,234	5,059	6,467	7,422	6,108	5,985	7,166	6,653	4,994	2,484	3,328	3,578	4,246	68,724	
Central Region IAIU		CPS	58	41	60	70	49	48	67	63	34	10	6	23	17	546	
		CWS	0	0	0	0	0	0	0	0	0	0	0	0	0	0	0
		Total	58	41	60	70	49	48	67	63	34	10	6	23	17	546	
Metro Region IAIU		CPS	36	42	43	80	45	41	46	69	33	3	11	2	13	464	
		CWS	0	0	0	0	0	0	0	0	0	0	0	0	0	0	0
		Total	36	42	43	80	45	41	46	69	33	3	11	2	13	464	
Northern Region IAIU		CPS	53	37	68	77	45	45	59	42	44	6	12	10	14	512	
		CWS	0	0	0	0	0	0	0	0	0	0	0	0	0	0	0
		Total	53	37	68	77	45	45	59	42	44	6	12	10	14	512	
Southern Region IAIU		CPS	66	57	83	75	59	62	82	61	51	12	18	20	23	669	
		CWS	0	0	0	0	0	0	0	0	0	0	0	0	0	0	0
		Total	66	57	83	75	59	62	82	61	51	12	18	20	23	669	
IAIU CPS Subtotal		CPS	213	177	254	302	198	196	254	235	162	31	47	55	67	2,191	
IAIU CWS Subtotal		CWS	0	0	0	0	0	0	0	0	0	0	0	0	0	0	
IAIU Subtotal		Total	213	177	254	302	198	196	254	235	162	31	47	55	67	2,191	
County and IAIU CPS Subtotal		CPS	4,202	4,002	5,223	5,860	4,923	4,794	5,642	5,312	4,120	2,113	2,844	3,003	3,581	55,619	
County and IAIU CWS Subtotal		CWS	1,245	1,234	1,498	1,864	1,383	1,387	1,778	1,576	1,036	402	531	630	732	15,296	
Unable to Determine(1)		Total	138	138	145	170	117	108	135	113	79	39	59	48	51	1,340	
Other Offices		Total	1	0	0	0	0	0	2	3	2	2	0	0	2	12	
Grand Total		Total	5,586	5,374	6,866	7,894	6,423	6,289	7,557	7,004	5,237	2,556	3,434	3,681	4,366	72,267	

(1) CPS Reports or CWS Referrals not assigned to an office through the Assignment Designee, but were assigned to an office for an assessment or investigation.