



Child Protection and Permanency

Monthly Screening and Investigation Report July 2024

Christine Norbut Beyer, MSW
Commissioner



NEW JERSEY DEPARTMENT OF
CHILDREN AND FAMILIES

Table of Contents

Table 1: NJ State Central Registry Activity: Monthly Child Abuse and Neglect Hotline Calls, Intakes and Assignments to Child Protection & Permanency (CP&P) Offices

Chart 1: CP&P Annual Trends in Child Protection Services (CPS) Reports and Child Welfare Services (CWS) Referrals

Table 2: Assignments to CP&P Offices: CPS Reports and CWS Referrals

Table 3: Source of CPS Reports and CWS Referrals

Table 4: Monthly Count of CPS Reports and CWS Referrals Assigned to Counties

Table 5: Monthly Count of CPS Reports and CWS Referrals Assigned to CP&P Local Offices

Table 1: NJ State Central Registry Activity: Monthly Child Abuse and Neglect Hotline Calls, Intakes and Assignments to CP&P Offices^{1,2,7}

2023-2024	Hotline Call Activity				Intakes Recorded in NJ SPIRIT ^{6,8}														Assignments to CP&P Offices				
	Total Calls to SCR ³	Abandon Calls ⁴	Average Time to Answer (seconds)	Resulting NJS Intakes ⁵	CPS Reports		CWS Referrals		No Action Required (NAR)		Related Information (RI)		Information & Referral (I&R)		Information Only (IO)		Unusual Incident (UIRS)		CPS Reports		CWS Referrals		Total
					n	%	n	%	n	%	n	%	n	%	n	%	n	%	n	%	n	%	
July 2023	11,377	732	90	12,196	4,576	37.5%	834	6.8%	201	1.6%	2,828	23.2%	1,996	16.4%	1,758	14.4%	3	0.0%	4,576	84.6%	834	15.4%	5,410
August 2023	11,208	536	62	12,127	4,484	37.0%	978	8.1%	229	1.9%	2,656	21.9%	2,081	17.2%	1,692	14.0%	7	0.1%	4,484	82.0%	981	18.0%	5,465
September 2023	12,809	612	49	13,859	5,034	36.3%	1,000	7.2%	199	1.4%	3,166	22.8%	2,720	19.6%	1,739	12.5%	1	0.0%	5,034	83.4%	1,000	16.6%	6,034
October 2023	14,337	619	45	15,546	5,837	37.5%	1,131	7.3%	215	1.4%	3,454	22.2%	2,974	19.1%	1,935	12.4%	0	0.0%	5,837	83.8%	1,131	16.2%	6,968
November 2023	13,338	704	50	14,269	5,195	36.4%	934	6.5%	158	1.1%	3,214	22.5%	2,469	17.3%	2,297	16.1%	2	0.0%	5,195	84.8%	934	15.2%	6,129
December 2023	12,144	705	80	12,968	4,913	37.9%	967	7.5%	136	1.0%	2,939	22.7%	2,438	18.8%	1,572	12.1%	3	0.0%	4,913	83.6%	967	16.4%	5,880
January 2024	13,611	959	83	14,437	5,268	36.5%	1,108	7.7%	210	1.5%	3,339	23.1%	2,809	19.5%	1,703	11.8%	0	0.0%	5,268	82.6%	1,108	17.4%	6,376
February 2024	13,854	1,086	100	14,452	5,260	36.4%	1,082	7.5%	158	1.1%	3,241	22.4%	3,044	21.1%	1,665	11.5%	2	0.0%	5,259	82.9%	1,082	17.1%	6,341
March 2024	14,126	1,230	115	14,694	5,390	36.7%	1,082	7.4%	149	1.0%	3,279	22.3%	3,061	20.8%	1,723	11.7%	10	0.1%	5,389	83.0%	1,082	17.0%	6,471
April 2024	13,711	1,221	106	14,246	5,332	37.4%	1,066	7.5%	177	1.2%	2,967	20.8%	2,939	20.6%	1,762	12.4%	3	0.0%	5,332	83.6%	1,068	16.4%	6,400
May 2024	15,356	1,601	154	15,753	6,005	38.1%	1,084	6.9%	181	1.1%	3,369	21.4%	3,294	20.9%	1,810	11.5%	10	0.1%	6,005	84.7%	1,081	15.3%	7,086
June 2024	12,636	1,337	139	13,083	4,869	37.2%	894	6.8%	167	1.3%	3,123	23.9%	2,348	17.9%	1,679	12.8%	3	0.0%	4,869	84.5%	894	15.5%	5,763
July 2024	11,454	594	65	12,329	4,350	35.3%	918	7.4%	151	1.2%	2,930	23.8%	2,207	17.9%	1,769	14.3%	4	0.0%	4,350	82.6%	918	17.4%	5,268
<i>Averages</i>	13,074	918		13,843	5,116	37.0%	1,006	7.3%	179	1.3%	3,116	22.5%	2,645	19.1%	1,777	12.8%	4	0.0%	5,116	83.6%	1,006	16.4%	6,122
Overall Totals	169,961	11,936		179,959	66,513	37.0%	13,078	7.3%	2,331	1.3%	40,505	22.5%	34,380	19.1%	23,104	12.8%	48	0.0%	66,511	83.6%	13,080	16.4%	79,591

¹ Comes from three distinct sources: (1) the Automatic Call Distribution (ACD) phone system; which keeps a count of the number of calls and call routing; (2) Monthly NJSpirit Intakes; which record decision making on calls received by hotline screeners, and (3) NJSpirit

² The number of Intakes, CPS Reports, and CWS Referrals are based on an extract from NJSpirit.

Data extracted by the Office of Research, Evaluation, and Reporting on **August 08, 2024** includes all Intakes, CPS Reports, and CWS Referrals received from **July 01, 2024 through July 31, 2024**.

³ The number calls received through the ACD System that were directed to a screener from any call-in phone number.

⁴ The number of calls received through the ACD System that are abandoned either while waiting in queue or while ringing.

⁵ The number of Intakes entered in NJSpirit from the number of calls received.

⁶ The number of Intakes recorded in NJSpirit, by type of Intake. There is not a one-to-one relationship between an ACD call and an Intake; multiple calls to State Central Registry (SCR) may result in a single Intake, or one call may result in multiple Intakes.

⁷ Intake: The process of documenting: a report of alleged abuse or neglect of a child (CPS); a request for services on behalf of a child, or a referral of a child for services (CWS); a call in which the caller provides additional or clarifying information about a current service case or active investigation (RI); informing a caller of, or referring a caller to, services available from other private or public sources (I&R); a call that requires no action by CP&P (NAR); or a response to a simple inquiry (IO).

CP&P Annual Trends in CPS Reports and CWS Referrals

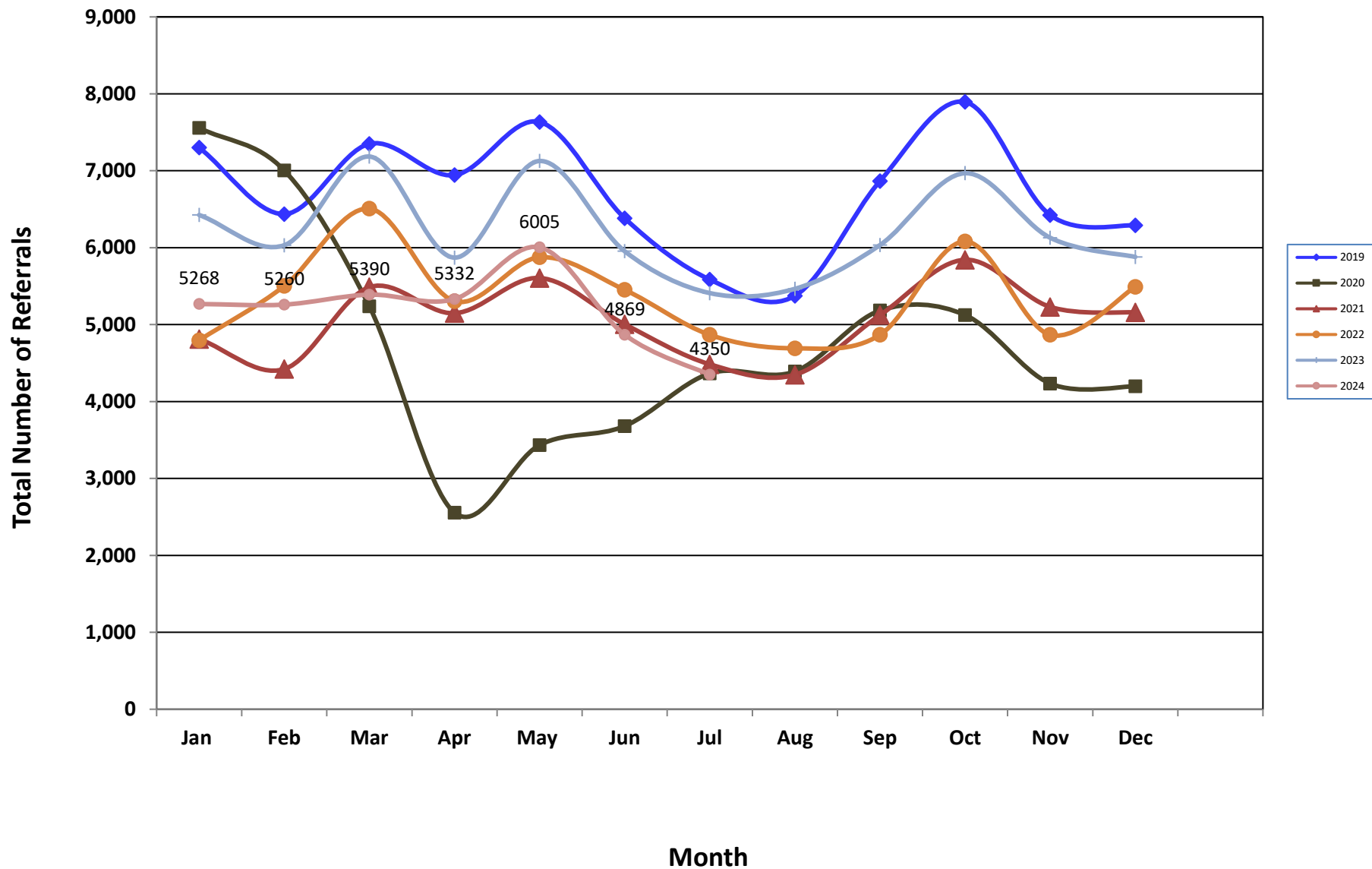


Table 2: Assignments to CP&P Offices: CPS Reports and CWS Referrals¹

Intake Date ³		CPS Reports ²	CWS Referrals ²	Total Assignments ²
2018	Jan 2018	5,276	1,784	7,060
	Feb 2018	4,933	1,644	6,577
	Mar 2018	5,212	1,727	6,939
	Apr 2018	5,275	1,601	6,876
	May 2018	5,920	1,836	7,756
	Jun 2018	4,948	1,615	6,563
	Jul 2018	4,011	1,308	5,319
	Aug 2018	4,102	1,408	5,510
	Sep 2018	4,748	1,634	6,382
	Oct 2018	5,790	2,011	7,801
	Nov 2018	4,973	1,620	6,593
	Dec 2018	4,891	1,527	6,418
	Total	60,079	19,715	79,794
2019	Jan 2019	5,443	1,858	7,301
	Feb 2019	4,811	1,628	6,439
	Mar 2019	5,677	1,824	7,501
	Apr 2019	5,313	1,630	6,943
	May 2019	5,853	1,781	7,634
	Jun 2019	4,874	1,509	6,383
	Jul 2019	4,277	1,309	5,586
	Aug 2019	4,068	1,306	5,374
	Sep 2019	5,315	1,551	6,866
	Oct 2019	5,968	1,926	7,894
	Nov 2019	4,991	1,432	6,423
	Dec 2019	4,855	1,434	6,289
	Total	61,445	19,188	80,633
2020	Jan 2020	5,715	1,842	7,557
	Feb 2020	5,380	1,624	7,004
	Mar 2020	4,172	1,065	5,237
	Apr 2020	2,149	407	2,556
	May 2020	2,897	537	3,434
	Jun 2020	3,045	636	3,681
	Jul 2020	3,628	738	4,366
	Aug 2020	3,569	822	4,391
	Sep 2020	4,153	1,030	5,183
	Oct 2020	4,257	868	5,125
	Nov 2020	3,564	670	4,234
	Dec 2020	3,517	681	4,198
	Total	46,046	10,920	56,966

Table 2: Assignments to CP&P Offices: CPS Reports and CWS Referrals¹

Intake Date ³		CPS Reports ²	CWS Referrals ²	Total Assignments ²
2021	Jan 2021	4,018	794	4,812
	Feb 2021	3,767	655	4,422
	Mar 2021	4,657	830	5,487
	Apr 2021	4,398	750	5,148
	May 2021	4,870	736	5,606
	Jun 2021	4,412	592	5,004
	Jul 2021	3,914	570	4,484
	Aug 2021	3,866	482	4,348
	Sep 2021	4,559	564	5,123
	Oct 2021	5,213	630	5,843
	Nov 2021	4,689	541	5,230
	Dec 2021	4,601	557	5,158
	Total	52,964	7,701	60,665
2022	Jan 2022	4,274	523	4,797
	Feb 2022	4,867	635	5,502
	Mar 2022	5,780	727	6,507
	Apr 2022	4,669	636	5,305
	May 2022	5,228	647	5,875
	Jun 2022	4,854	598	5,452
	Jul 2022	4,277	590	4,867
	Aug 2022	4,103	589	4,692
	Sep 2022	4,810	680	5,490
	Oct 2022	5,356	725	6,081
	Nov 2022	4,852	762	5,614
	Dec 2022	4,760	731	5,491
	Total	57,830	7,843	65,673
2023	Jan 2023	5,461	962	6,423
	Feb 2023	5,141	891	6,032
	Mar 2023	6,064	1,121	7,185
	Apr 2023	5,001	870	5,871
	May 2023	6,074	1,053	7,127
	Jun 2023	4,999	955	5,954
	Jul 2023	4,576	834	5,410
	Aug 2023	4,484	981	5,465
	Sep 2023	5,034	1,000	6,034
	Oct 2023	5,837	1,131	6,968
	Nov 2023	5,195	934	6,129
	Dec 2023	4,913	967	5,880
	Total	62,779	11,699	74,478

Intake Date ³		CPS Reports ²	CWS Referrals ²	Total Assignments ²
2024	Jan 2024	5,268	1,108	6,376
	Feb 2024	5,259	1,082	6,341
	Mar 2024	5,389	1,082	6,471
	Apr 2024	5,332	1,068	6,400
	May 2024	6,005	1,081	7,086
	Jun 2024	4,869	894	5,763
	Jul 2024	4,350	918	5,268
	Aug 2024			
	Sep 2024			
	Oct 2024			
	Nov 2024			
	Dec 2024			
	Total	36,472	7,233	43,705
Grand Total		377,615	84,299	461,914

¹Source of Data: NJ SPIRIT

²A CPS Report or a CWS Referral may include multiple children in a family, with one or more allegation or request for services. In these cases, each CPS Report or CWS Referral is counted once - the CPS Report or the CWS Referral is the unit of analysis rather than the child.

³Prior to January 2014, the number of CPS Reports and CWS Referrals was based on the type of assignment of the CPS Report or CWS Referral. Beginning in January 2014, the number of CPS Reports and CWS Referrals is based on the number of CPS Reports and CWS Referrals received.

Table 3: Source of CPS Reports and CWS Referrals

	Source	Jul 2023	Aug 2023	Sep 2023	Oct 2023	Nov 2023	Dec 2023	Jan 2024	Feb 2024	Mar 2024	Apr 2024	May 2024	Jun 2024	Jul 2024		13 Month Total	
CPS Reports and CWS Referrals	School Staff	246	136	1,203	1,990	1,596	1,494	1,704	1,837	1,881	1,605	1,914	892	200	4%	16,698	21%
	Healthcare Provider	884	940	793	868	785	806	907	847	896	911	893	828	814	15%	11,172	14%
	Law Enforcement	1,928	1,775	1,737	1,744	1,573	1,654	1,602	1,598	1,665	1,688	1,859	1,932	1,920	36%	22,675	28%
	Government Agency	294	392	343	295	305	284	316	282	249	314	323	248	306	6%	3,951	5%
	Parent	435	540	488	485	447	399	428	402	405	438	489	440	526	10%	5,922	7%
	Relative/Friend/Neighbor	377	410	343	348	300	296	344	308	293	323	337	364	322	6%	4,365	5%
	Anonymous	452	431	471	530	440	394	458	423	487	445	533	439	408	8%	5,911	7%
	CP&P	62	68	69	59	54	57	67	56	56	58	65	39	73	1%	783	1%
	Court/Legal	116	144	109	120	99	90	121	114	115	148	139	135	114	2%	1,564	2%
	Community Group/Individual	229	233	180	199	189	144	167	169	146	153	186	147	185	4%	2,327	3%
	Facility Staff (incl Correctional Facility)	59	67	49	49	45	47	59	47	45	59	47	35	76	1%	684	1%
	Child (Self)	28	33	37	38	38	18	20	24	24	30	33	33	40	1%	396	0%
	Other	271	275	182	222	232	183	167	212	182	198	236	203	244	5%	2,807	4%
	Daycare/Babysitter	29	21	30	21	26	14	16	22	27	30	32	28	40	1%	336	0%
Total		5,410	5,465	6,034	6,968	6,129	5,880	6,376	6,341	6,471	6,400	7,086	5,763	5,268		79,591	

Table 4: Monthly Count of CPS Reports and CWS Referrals Assigned to Counties

County														Average Number of Assignments Last 13 Months	Numerical Difference
	Jul 2023	Aug 2023	Sep 2023	Oct 2023	Nov 2023	Dec 2023	Jan 2024	Feb 2024	Mar 2024	Apr 2024	May 2024	Jun 2024	Jul 2024		
Atlantic	265	232	258	333	273	263	247	260	240	316	328	262	233	270	-29
Bergen	305	312	339	430	400	374	455	361	343	364	435	301	308	364	7
Burlington	273	305	310	374	333	282	288	305	306	331	359	287	230	306	-57
Camden	449	463	487	535	513	449	513	491	451	496	534	467	422	482	-45
Cape May	61	64	71	71	64	71	63	60	62	73	71	83	88	69	5
Cumberland	179	208	174	207	211	199	223	206	230	210	224	166	163	200	-3
Essex	530	569	639	692	584	585	644	658	686	633	719	621	540	623	-81
Gloucester	232	246	244	298	238	246	242	254	235	244	260	222	227	245	5
Hudson	337	345	406	436	395	336	391	466	462	392	463	393	334	397	-59
Hunterdon	60	38	38	53	47	42	44	63	47	52	55	41	54	49	13
Mercer	252	264	261	368	256	306	274	308	327	302	343	240	223	286	-17
Middlesex	376	398	436	466	429	434	489	466	503	483	479	432	358	442	-74
Monmouth	307	271	279	362	295	291	350	305	328	349	339	335	272	314	-63
Morris	201	166	219	226	242	202	250	233	259	228	242	182	224	221	42
Ocean	344	357	402	405	409	378	402	378	382	375	410	370	323	380	-47
Passaic	313	320	422	462	374	383	401	381	387	393	474	336	327	383	-9
Salem	68	58	63	84	65	66	69	84	77	67	84	65	59	70	-6
Somerset	116	119	147	176	126	140	148	146	159	135	172	138	129	142	-9
Sussex	100	97	95	104	93	105	105	103	96	114	110	96	105	102	9
Union	296	292	302	360	343	314	330	348	396	352	396	310	264	331	-46
Warren	95	92	94	88	104	87	113	102	105	98	139	95	100	101	5
County Subtotals	5,159	5,216	5,686	6,530	5,794	5,553	6,041	5,978	6,081	6,007	6,636	5,442	4,983	5,777	-459
Central Region IAIU	49	58	47	82	60	80	71	68	84	67	66	58	51	65	-7
Metro Region IAIU	32	32	58	86	68	61	59	56	82	70	85	59	34	60	-25
Northern Region IAIU	29	20	59	71	50	50	41	58	52	57	58	40	31	47	-9
Western Region IAIU	0	0	0	0	0	0	0	0	0	0	0	0	58	4	58
Southern Region IAIU	59	66	79	86	71	69	80	88	82	87	120	95	33	78	-62
IAIU Subtotals	169	176	243	325	249	260	251	270	300	281	329	252	207	255	-45
¹ Unable to Determine	81	73	105	109	86	62	81	85	83	108	110	68	75	87	7
Other Offices	1	0	0	4	0	5	3	8	7	4	11	1	3	4	2
Grand Total	5,410	5,465	6,034	6,968	6,129	5,880	6,376	6,341	6,471	6,400	7,086	5,763	5,268	6,122	-495

¹CPS Reports or CWS Referrals not assigned to an office through the Assignment Designee, but were assigned to an office for an assessment or investigation.



Table 5: Monthly Count of CPS Reports and CWS Referrals Assigned to CP&P Local Offices

County	Local Office	Type of Referral														Total
			Jul 2023	Aug 2023	Sep 2023	Oct 2023	Nov 2023	Dec 2023	Jan 2024	Feb 2024	Mar 2024	Apr 2024	May 2024	Jun 2024	Jul 2024	
ATLANTIC	Atlantic East	CPS	114	101	125	138	112	99	107	121	107	138	176	116	119	1,573
		CWS	28	27	26	41	33	26	33	25	29	41	24	33	22	388
		Total	142	128	151	179	145	125	140	146	136	179	200	149	141	1,961
	Atlantic West	CPS	102	81	87	126	112	123	84	94	89	116	103	90	71	1,278
		CWS	21	23	20	28	16	15	23	20	15	21	25	23	21	271
		Total	123	104	107	154	128	138	107	114	104	137	128	113	92	1,549
	County Totals	CPS	216	182	212	264	224	222	191	215	196	254	279	206	190	2,851
		CWS	49	50	46	69	49	41	56	45	44	62	49	56	43	659
		Total	265	232	258	333	273	263	247	260	240	316	328	262	233	3,510
BERGEN	Bergen Central	CPS	105	107	120	149	150	129	176	132	126	109	172	112	108	1,695
		CWS	14	15	33	22	29	27	40	28	31	30	28	27	28	352
		Total	119	122	153	171	179	156	216	160	157	139	200	139	136	2,047
	Bergen South	CPS	155	155	166	224	192	174	193	161	156	186	203	134	153	2,252
		CWS	31	35	20	35	29	44	46	40	30	39	32	28	19	428
		Total	186	190	186	259	221	218	239	201	186	225	235	162	172	2,680
	County Totals	CPS	260	262	286	373	342	303	369	293	282	295	375	246	261	3,947
		CWS	45	50	53	57	58	71	86	68	61	69	60	55	47	780
		Total	305	312	339	430	400	374	455	361	343	364	435	301	308	4,727
BURLINGTON	Burlington East	CPS	112	126	116	149	136	108	133	118	130	129	147	108	96	1,608
		CWS	26	19	24	29	30	34	19	28	30	29	37	29	18	352
		Total	138	145	140	178	166	142	152	146	160	158	184	137	114	1,960
	Burlington West	CPS	109	127	134	156	126	110	108	127	114	147	148	125	98	1,629
		CWS	26	33	36	40	41	30	28	32	32	26	27	25	18	394
		Total	135	160	170	196	167	140	136	159	146	173	175	150	116	2,023
	County Totals	CPS	221	253	250	305	262	218	241	245	244	276	295	233	194	3,237
		CWS	52	52	60	69	71	64	47	60	62	55	64	54	36	746
		Total	273	305	310	374	333	282	288	305	306	331	359	287	230	3,983
CAMDEN	Camden Central	CPS	102	112	98	110	106	89	94	106	101	98	117	92	92	1,317
		CWS	22	18	32	28	22	24	29	28	22	26	18	20	25	314
		Total	124	130	130	138	128	113	123	134	123	124	135	112	117	1,631
	Camden East	CPS	87	94	115	111	95	93	96	96	95	111	99	109	81	1,282
		CWS	29	18	25	20	12	31	36	31	16	23	29	13	22	305
		Total	116	112	140	131	107	124	132	127	111	134	128	122	103	1,587
	Camden North	CPS	76	92	95	107	114	98	105	109	96	96	116	74	93	1,271
		CWS	25	29	16	30	27	19	28	23	22	28	15	19	16	297
		Total	101	121	111	137	141	117	133	132	118	124	131	93	109	1,568
	Camden South	CPS	86	83	90	112	114	83	103	85	80	90	108	118	74	1,226
		CWS	22	17	16	17	23	12	22	13	19	24	32	22	19	258
		Total	108	100	106	129	137	95	125	98	99	114	140	140	93	1,484
	County Totals	CPS	351	381	398	440	429	363	398	396	372	395	440	393	340	5,096
		CWS	98	82	89	95	84	86	115	95	79	101	94	74	82	1,174
		Total	449	463	487	535	513	449	513	491	451	496	534	467	422	6,270
CAPE MAY	Cape May	CPS	55	53	56	62	56	59	53	45	51	64	56	72	74	756
		CWS	6	11	15	9	8	12	10	15	11	9	15	11	14	146
		Total	61	64	71	71	64	71	63	60	62	73	71	83	88	902
	County Totals	CPS	55	53	56	62	56	59	53	45	51	64	56	72	74	756
		CWS	6	11	15	9	8	12	10	15	11	9	15	11	14	146
Total	61	64	71	71	64	71	63	60	62	73	71	83	88	902		
CUMBERLAND	Cumberland East	CPS	71	85	58	78	72	53	75	68	72	79	95	70	56	932
		CWS	11	14	10	8	10	18	23	18	18	10	19	10	14	183
		Total	82	99	68	86	82	71	98	86	90	89	114	80	70	1,115
	Cumberland West	CPS	83	89	87	98	117	107	107	101	108	109	89	69	75	1,239
		CWS	14	20	19	23	12	21	18	19	32	12	21	17	18	246
		Total	97	109	106	121	129	128	125	120	140	121	110	86	93	1,485
	County Totals	CPS	154	174	145	176	189	160	182	169	180	188	184	139	131	2,171
		CWS	25	34	29	31	22	39	41	37	50	22	40	27	32	429
		Total	179	208	174	207	211	199	223	206	230	210	224	166	163	2,600

Data in this report is preliminary and may differ from any final report. This report is produced to ensure continuous quality improvement throughout DCF.



Table 5: Monthly Count of CPS Reports and CWS Referrals Assigned to CP&P Local Offices

County	Local Office	Type of Referral														Total
			Jul 2023	Aug 2023	Sep 2023	Oct 2023	Nov 2023	Dec 2023	Jan 2024	Feb 2024	Mar 2024	Apr 2024	May 2024	Jun 2024	Jul 2024	
ESSEX	Essex Central	CPS	63	70	86	78	64	57	82	71	72	64	69	76	60	912
		CWS	9	24	20	20	12	11	23	23	26	14	19	19	23	243
		Total	72	94	106	98	76	68	105	94	98	78	88	95	83	1,155
	Essex North	CPS	69	74	109	124	117	94	107	95	99	115	126	99	78	1,306
		CWS	11	16	24	21	20	11	12	25	28	16	21	17	22	244
		Total	80	90	133	145	137	105	119	120	127	131	147	116	100	1,550
	Essex South	CPS	94	75	77	101	78	83	91	94	98	91	110	86	87	1,165
		CWS	11	18	22	26	19	25	20	20	16	21	18	22	24	262
		Total	105	93	99	127	97	108	111	114	114	112	128	108	111	1,427
	Newark Center City	CPS	79	81	72	77	85	61	71	70	82	87	81	80	55	981
		CWS	11	22	22	13	18	21	13	23	21	18	26	22	21	251
		Total	90	103	94	90	103	82	84	93	103	105	107	102	76	1,232
	Newark Northeast	CPS	85	69	100	103	76	98	101	97	96	82	106	78	76	1,167
		CWS	15	18	15	25	16	34	24	26	36	27	21	22	22	301
		Total	100	87	115	128	92	132	125	123	132	109	127	100	98	1,468
Newark South	CPS	68	75	73	89	66	76	84	92	99	72	104	81	59	1,038	
	CWS	15	27	19	15	13	14	16	22	13	26	18	19	13	230	
	Total	83	102	92	104	79	90	100	114	112	98	122	100	72	1,268	
County Totals	CPS	458	444	517	572	486	469	536	519	546	511	596	500	415	6,569	
	CWS	72	125	122	120	98	116	108	139	140	122	123	121	125	1,531	
	Total	530	569	639	692	584	585	644	658	686	633	719	621	540	8,100	
GLOUCESTER	Gloucester East	CPS	79	91	84	117	89	83	98	92	80	90	98	82	91	1,174
		CWS	8	13	18	24	20	15	19	26	22	18	12	16	20	231
		Total	87	104	102	141	109	98	117	118	102	108	110	98	111	1,405
	Gloucester West	CPS	127	118	117	131	104	122	104	112	110	112	121	105	92	1,475
		CWS	18	24	25	26	25	26	21	24	23	24	29	19	24	308
		Total	145	142	142	157	129	148	125	136	133	136	150	124	116	1,783
	County Totals	CPS	206	209	201	248	193	205	202	204	190	202	219	187	183	2,649
CWS		26	37	43	50	45	41	40	50	45	42	41	35	44	539	
Total		232	246	244	298	238	246	242	254	235	244	260	222	227	3,188	
HUDSON	Hudson Central	CPS	71	75	92	98	94	80	79	104	109	75	99	96	76	1,148
		CWS	21	26	16	15	20	19	15	24	21	16	18	24	25	260
		Total	92	101	108	113	114	99	94	128	130	91	117	120	101	1,408
	Hudson North	CPS	76	59	87	93	77	78	87	111	94	93	97	96	61	1,109
		CWS	12	15	21	20	19	11	26	13	24	22	21	15	29	248
		Total	88	74	108	113	96	89	113	124	118	115	118	111	90	1,357
	Hudson South	CPS	72	71	83	76	85	60	75	90	87	83	97	63	52	994
		CWS	20	15	26	28	12	9	17	15	18	17	25	11	14	227
		Total	92	86	109	104	97	69	92	105	105	100	122	74	66	1,221
	Hudson West	CPS	58	70	65	86	71	60	75	95	85	73	88	75	65	966
		CWS	7	14	16	20	17	19	17	14	24	13	18	13	12	204
		Total	65	84	81	106	88	79	92	109	109	86	106	88	77	1,170
County Totals	CPS	277	275	327	353	327	278	316	400	375	324	381	330	254	4,217	
	CWS	60	70	79	83	68	58	75	66	87	68	82	63	80	939	
	Total	337	345	406	436	395	336	391	466	462	392	463	393	334	5,156	
HUNTERDON	Hunterdon	CPS	48	35	29	44	44	35	37	51	42	45	35	41	531	
		CWS	12	3	9	9	3	7	7	12	5	7	10	6	13	103
		Total	60	38	38	53	47	42	44	63	47	52	55	41	54	634
	County Totals	CPS	48	35	29	44	44	35	37	51	42	45	35	41	531	
		CWS	12	3	9	9	3	7	7	12	5	7	10	6	13	103
Total		60	38	38	53	47	42	44	63	47	52	55	41	54	634	
MERCER	Mercer North	CPS	111	105	126	146	113	129	122	114	147	129	151	103	102	1,598
		CWS	17	30	15	27	21	27	26	30	33	24	28	18	26	322
		Total	128	135	141	173	134	156	148	144	180	153	179	121	128	1,920
	Mercer South	CPS	112	101	93	154	96	121	108	133	132	123	142	97	84	1,496
		CWS	12	28	27	41	26	29	18	31	15	26	22	22	11	308
		Total	124	129	120	195	122	150	126	164	147	149	164	119	95	1,804
	County Totals	CPS	223	206	219	300	209	250	230	247	279	252	293	200	186	3,094
CWS		29	58	42	68	47	56	44	61	48	50	50	40	37	630	

Data in this report is preliminary and may differ from any final report. This report is produced to ensure continuous quality improvement throughout DCF.



Table 5: Monthly Count of CPS Reports and CWS Referrals Assigned to CP&P Local Offices

County	Local Office	Type of Referral														Total
			Jul 2023	Aug 2023	Sep 2023	Oct 2023	Nov 2023	Dec 2023	Jan 2024	Feb 2024	Mar 2024	Apr 2024	May 2024	Jun 2024	Jul 2024	
		Total	252	264	261	368	256	306	274	308	327	302	343	240	223	3,724
MIDDLESEX	Middlesex Central	CPS	85	90	120	99	107	90	111	123	122	131	129	104	84	1,395
		CWS	22	14	26	26	14	13	16	19	20	16	8	19	16	229
		Total	107	104	146	125	121	103	127	142	142	147	137	123	100	1,624
	Middlesex Coastal	CPS	121	124	119	129	136	131	148	148	142	139	136	144	100	1,717
		CWS	24	35	24	33	26	25	34	21	33	26	28	12	19	340
		Total	145	159	143	162	162	156	182	169	175	165	164	156	119	2,057
	Middlesex West	CPS	106	114	124	149	120	152	145	130	159	132	148	122	119	1,720
		CWS	18	21	23	30	26	23	35	25	27	39	30	31	20	348
		Total	124	135	147	179	146	175	180	155	186	171	178	153	139	2,068
	County Totals	CPS	312	328	363	377	363	373	404	401	423	402	413	370	303	4,832
CWS		64	70	73	89	66	61	85	65	80	81	66	62	55	917	
Total		376	398	436	466	429	434	489	466	503	483	479	432	358	5,749	
MONMOUTH	Monmouth North	CPS	150	121	149	161	142	137	174	153	171	171	156	177	135	1,997
		CWS	29	29	19	33	23	17	26	28	18	28	28	17	18	313
		Total	179	150	168	194	165	154	200	181	189	199	184	194	153	2,310
	Monmouth South	CPS	114	104	102	131	115	116	126	102	124	124	132	121	96	1,507
		CWS	14	17	9	37	15	21	24	22	15	26	23	20	23	266
		Total	128	121	111	168	130	137	150	124	139	150	155	141	119	1,773
	County Totals	CPS	264	225	251	292	257	253	300	255	295	295	288	298	231	3,504
		CWS	43	46	28	70	38	38	50	50	33	54	51	37	41	579
		Total	307	271	279	362	295	291	350	305	328	349	339	335	272	4,083
MORRIS	Morris East	CPS	87	65	100	91	101	89	92	92	102	85	95	71	98	1,168
		CWS	11	8	11	19	13	15	14	34	22	24	18	17	221	
		Total	98	73	111	110	114	104	107	106	136	107	119	89	115	1,389
	Morris West	CPS	86	78	86	96	108	85	119	103	98	98	105	77	92	1,231
		CWS	17	15	22	20	20	13	24	24	25	23	18	16	17	254
		Total	103	93	108	116	128	98	143	127	123	121	123	93	109	1,485
	County Totals	CPS	173	143	186	187	209	174	211	195	200	183	200	148	190	2,399
		CWS	28	23	33	39	33	28	39	38	59	45	42	34	34	475
Total		201	166	219	226	242	202	250	233	259	228	242	182	224	2,874	
OCEAN	Ocean North	CPS	159	148	192	184	188	162	160	169	171	192	182	171	144	2,222
		CWS	27	29	23	31	24	25	30	25	34	33	33	28	24	366
		Total	186	177	215	215	212	187	190	194	205	225	215	199	168	2,588
	Ocean South	CPS	136	148	152	166	173	163	172	154	152	123	161	148	122	1,970
		CWS	22	32	35	24	24	28	40	30	25	27	34	23	33	377
		Total	158	180	187	190	197	191	212	184	177	150	195	171	155	2,347
	County Totals	CPS	295	296	344	350	361	325	332	323	323	315	343	319	266	4,192
		CWS	49	61	58	55	48	53	70	55	59	60	67	51	57	743
Total		344	357	402	405	409	378	402	378	382	375	410	370	323	4,935	
PASSAIC	Passaic Central	CPS	121	105	168	178	155	158	154	141	152	150	195	150	136	1,963
		CWS	29	35	32	33	34	31	43	30	36	44	38	19	38	442
		Total	150	140	200	211	189	189	197	171	188	194	233	169	174	2,405
	Passaic North	CPS	136	145	176	214	148	159	165	164	163	159	201	137	129	2,096
		CWS	27	35	46	37	37	35	39	46	36	40	40	30	24	472
		Total	163	180	222	251	185	194	204	210	199	199	241	167	153	2,568
	County Totals	CPS	257	250	344	392	303	317	319	305	315	309	396	287	265	4,059
		CWS	56	70	78	70	71	66	82	76	72	84	78	49	62	914
Total		313	320	422	462	374	383	401	381	387	393	474	336	327	4,973	
SALEM	Salem	CPS	53	50	55	72	54	59	58	68	58	57	70	53	53	760
		CWS	15	8	8	12	11	7	11	16	19	10	14	12	6	149
		Total	68	58	63	84	65	66	69	84	77	67	84	65	59	909
	County Totals	CPS	53	50	55	72	54	59	58	68	58	57	70	53	53	760
		CWS	15	8	8	12	11	7	11	16	19	10	14	12	6	149
Total	68	58	63	84	65	66	69	84	77	67	84	65	59	909		
SOMERSET	Somerset	CPS	104	97	124	160	112	120	130	128	134	111	152	123	108	1,603
		CWS	12	22	23	16	14	20	18	18	25	24	20	15	21	248
		Total	116	119	147	176	126	140	148	146	159	135	172	138	129	1,851
	CPS	104	97	124	160	112	120	130	128	134	111	152	123	108	1,603	

Data in this report is preliminary and may differ from any final report. This report is produced to ensure continuous quality improvement throughout DCF.



Table 5: Monthly Count of CPS Reports and CWS Referrals Assigned to CP&P Local Offices

County	Local Office	Type of Referral														Total
			Jul 2023	Aug 2023	Sep 2023	Oct 2023	Nov 2023	Dec 2023	Jan 2024	Feb 2024	Mar 2024	Apr 2024	May 2024	Jun 2024	Jul 2024	
	County Totals	CWS	12	22	23	16	14	20	18	18	25	24	20	15	21	248
		Total	116	119	147	176	126	140	148	146	159	135	172	138	129	1,851
SUSSEX	Sussex	CPS	93	82	73	88	82	85	80	81	82	95	92	81	86	1,100
		CWS	7	15	22	16	11	20	25	22	14	19	18	15	19	223
		Total	100	97	95	104	93	105	105	103	96	114	110	96	105	1,323
	County Totals	CPS	93	82	73	88	82	85	80	81	82	95	92	81	86	1,100
		Total	100	97	95	104	93	105	105	103	96	114	110	96	105	1,323
UNION	Union Central	CPS	71	81	94	97	82	96	73	87	107	93	91	94	62	1,128
		CWS	19	13	16	20	11	13	16	21	17	7	24	13	12	202
		Total	90	94	110	117	93	109	89	108	124	100	115	107	74	1,330
	Union East	CPS	93	79	85	97	102	84	101	93	107	85	102	69	71	1,168
		CWS	9	24	16	17	13	13	15	28	20	20	26	20	11	232
		Total	102	103	101	114	115	97	116	121	127	105	128	89	82	1,400
	Union West	CPS	86	84	72	106	120	93	109	100	127	128	133	99	97	1,354
		CWS	18	11	19	23	15	15	16	19	18	19	20	15	11	219
		Total	104	95	91	129	135	108	125	119	145	147	153	114	108	1,573
	County Totals	CPS	250	244	251	300	304	273	283	280	341	306	326	262	230	3,650
CWS		46	48	51	60	39	41	47	68	55	46	70	48	34	653	
Total		296	292	302	360	343	314	330	348	396	352	396	310	264	4,303	
WARREN	Warren	CPS	80	76	86	72	76	74	95	85	85	78	126	82	83	1,098
		CWS	15	16	8	16	28	13	18	17	20	20	13	13	17	214
		Total	95	92	94	88	104	87	113	102	105	98	139	95	100	1,312
	County Totals	CPS	80	76	86	72	76	74	95	85	85	78	126	82	83	1,098
		Total	95	92	94	88	104	87	113	102	105	98	139	95	100	1,312
County CPS Referral Total		CPS	4,350	4,265	4,717	5,427	4,882	4,615	4,967	4,905	5,013	4,957	5,569	4,564	4,084	62,315
County CWS Referral Total		CWS	809	951	969	1,103	912	938	1,074	1,073	1,068	1,050	1,067	878	899	12,791
County Referral Total		Total	5,159	5,216	5,686	6,530	5,794	5,553	6,041	5,978	6,081	6,007	6,636	5,442	4,983	75,106
Central Region IAIU	CPS	49	58	47	82	60	80	70	68	84	67	66	58	51	840	
	CWS	0	0	0	0	0	0	1	0	0	0	0	0	0	1	
	Total	49	58	47	82	60	80	71	68	84	67	66	58	51	841	
Metro Region IAIU	CPS	32	32	58	86	68	61	59	56	82	70	85	59	34	782	
	CWS	0	0	0	0	0	0	0	0	0	0	0	0	0	0	
	Total	32	32	58	86	68	61	59	56	82	70	85	59	34	782	
Northern Region IAIU	CPS	28	20	59	71	50	50	40	58	52	57	58	40	31	614	
	CWS	1	0	0	0	0	0	1	0	0	0	0	0	0	2	
	Total	29	20	59	71	50	50	41	58	52	57	58	40	31	616	
Southern Region IAIU	CPS	59	66	79	86	71	69	80	88	82	87	120	95	33	1,015	
	CWS	0	0	0	0	0	0	0	0	0	0	0	0	0	0	
	Total	59	66	79	86	71	69	80	88	82	87	120	95	33	1,015	
Western Region IAIU	CPS	0	0	0	0	0	0	0	0	0	0	0	0	58	58	
	CWS	0	0	0	0	0	0	0	0	0	0	0	0	0	0	
	Total	0	0	0	0	0	0	0	0	0	0	0	0	58	58	
IAIU CPS Subtotal		CPS	168	176	243	325	249	260	249	270	300	281	329	252	207	3,309
IAIU CWS Subtotal		CWS	1	0	0	0	0	0	2	0	0	0	0	0	3	
IAIU Subtotal		Total	169	176	243	325	249	260	251	270	300	281	329	252	207	3,312
County and IAIU CPS Subtotal		CPS	4,518	4,441	4,960	5,752	5,131	4,875	5,216	5,175	5,313	5,238	5,898	4,816	4,291	65,624
County and IAIU CWS Subtotal		CWS	810	951	969	1,103	912	938	1,076	1,073	1,068	1,050	1,067	878	899	12,794
Unable to Determine(1)		Total	81	73	105	109	86	62	81	85	83	108	110	68	75	1,126
Other Offices		Total	1	0	0	4	0	5	3	8	7	4	11	1	3	47
Grand Total		Total	5,410	5,465	6,034	6,968	6,129	5,880	6,376	6,341	6,471	6,400	7,086	5,763	5,268	79,591

(1) CPS Reports or CWS Referrals not assigned to an office through the Assignment Designee, but were assigned to an office for an assessment or investigation.