



## **Child Protection and Permanency**

# **Monthly Screening and Investigation Report August 2019**

Christine Norbut Beyer, MSW  
Commissioner



## Table of Contents

Table 1: NJ State Central Registry Activity: Monthly Child Abuse and Neglect Hotline Calls, Intakes and Assignments to Child Protection & Permanency (CP&P) Offices

---

Chart 1: CP&P Annual Trends in Child Protection Services (CPS) Reports and Child Welfare Services (CWS) Referrals

---

Table 2: Assignments to CP&P Offices: CPS Reports and CWS Referrals

---

Table 3: Source of CPS Reports and CWS Referrals

---

Table 4: Monthly Count of CPS Reports and CWS Referrals Assigned to Counties

---

Table 5: Monthly Count of CPS Reports and CWS Referrals Assigned to CP&P Local Offices

---

**Table 1: NJ State Central Registry Activity: Monthly Child Abuse and Neglect Hotline Calls, Intakes and Assignments to CP&P Offices<sup>1,2,7</sup>**

2018 - 2019	Hotline Call Activity				Intakes Recorded in NJ SPIRIT <sup>6,8</sup>												Assignments to CP&P Offices				
	Total Calls to SCR <sup>3</sup>	Abandon Calls <sup>4</sup>	Average Time to Answer (seconds)	Resulting NJS Intakes <sup>5</sup>	CPS Reports		CWS Referrals		No Action Required (NAR)		Related Information (RI)		Information & Referral (I&R)		Information Only (IO)		CPS Reports		CWS Referrals		Total
					n	%	n	%	n	%	n	%	n	%	n	%	n	%	n	%	
August 2018	11,633	460	43	12,708	4,102	32.3%	1,409	11.1%	252	2.0%	3,455	27.2%	1,307	10.3%	2,183	17.2%	4,102	74.4%	1,408	25.6%	5,510
September 2018	13,554	925	64	14,277	4,748	33.3%	1,632	11.4%	217	1.5%	3,914	27.4%	1,448	10.1%	2,318	16.2%	4,748	74.4%	1,634	25.6%	6,382
October 2018	15,489	904	68	16,470	5,790	35.2%	2,008	12.2%	260	1.6%	4,103	24.9%	1,827	11.1%	2,482	15.1%	5,790	74.2%	2,011	25.8%	7,801
November 2018	13,533	1,111	80	14,067	4,973	35.4%	1,621	11.5%	210	1.5%	3,749	26.7%	1,453	10.3%	2,061	14.7%	4,973	75.4%	1,620	24.6%	6,593
December 2018	13,020	971	78	13,683	4,891	35.7%	1,524	11.1%	174	1.3%	3,518	25.7%	1,446	10.6%	2,130	15.6%	4,891	76.2%	1,527	23.8%	6,418
January 2019	14,566	1,097	91	15,153	5,443	35.9%	1,858	12.3%	224	1.5%	3,764	24.8%	1,673	11.0%	2,191	14.5%	5,443	74.6%	1,858	25.4%	7,301
February 2019	12,995	1,095	102	13,518	4,811	35.6%	1,626	12.0%	213	1.6%	3,476	25.7%	1,506	11.1%	1,886	14.0%	4,811	74.7%	1,628	25.3%	6,439
March 2019	14,637	1,422	112	15,528	5,677	36.6%	1,826	11.8%	212	1.4%	3,825	24.6%	1,762	11.3%	2,226	14.3%	5,677	75.7%	1,824	24.3%	7,501
April 2019	14,252	1,404	113	14,540	5,313	36.5%	1,630	11.2%	253	1.7%	3,500	24.1%	1,721	11.8%	2,123	14.6%	5,313	76.5%	1,630	23.5%	6,943
May 2019	15,705	1,615	120	15,810	5,853	37.0%	1,780	11.3%	229	1.4%	3,784	23.9%	1,852	11.7%	2,312	14.6%	5,853	76.7%	1,781	23.3%	7,634
June 2019	13,596	1,287	107	14,057	4,872	33.0%	1,507	10.7%	268	1.9%	3,537	25.2%	1,703	12.1%	2,168	15.4%	4,874	76.4%	1,509	23.6%	6,383
July 2019	12,135	874	73	12,821	4,277	33.4%	1,309	10.2%	267	2.1%	3,250	25.3%	1,452	11.3%	2,266	17.7%	4,277	76.6%	1,309	23.4%	5,586
<b>August 2019</b>	<b>11,044</b>	<b>482</b>	<b>38</b>	<b>12,291</b>	<b>4,068</b>	<b>33.1%</b>	<b>1,303</b>	<b>10.6%</b>	<b>222</b>	<b>1.8%</b>	<b>3,113</b>	<b>25.3%</b>	<b>1,381</b>	<b>11.2%</b>	<b>2,204</b>	<b>17.9%</b>	<b>4,068</b>	<b>75.7%</b>	<b>1,306</b>	<b>24.3%</b>	<b>5,374</b>
	<b>13,551</b>	<b>1,050</b>	<b>84</b>	<b>14,225</b>	<b>4,986</b>	<b>35.1%</b>	<b>1,618</b>	<b>11.4%</b>	<b>231</b>	<b>1.6%</b>	<b>3,614</b>	<b>25.4%</b>	<b>1,579</b>	<b>11.1%</b>	<b>2,196</b>	<b>15.4%</b>	<b>4,986</b>	<b>75.5%</b>	<b>1,619</b>	<b>24.5%</b>	<b>6,605</b>
<b>Overall Total</b>	<b>176,159</b>	<b>13,647</b>		<b>184,923</b>	<b>64,818</b>		<b>21,033</b>		<b>3,001</b>		<b>46,988</b>		<b>20,531</b>		<b>28,550</b>		<b>64,820</b>	<b>75.5%</b>	<b>21,045</b>	<b>24.5%</b>	<b>85,865</b>

<sup>1</sup>Comes from three distinct sources: (1) the Automatic Call Distribution (ACD) phone system; which keeps a count of the number of calls and call routing; (2) Monthly NJSpirit Intakes; which record decision making on calls received by hotline screeners, and (3) NJSpirit extracts of assigned CWS Referrals and CPS Reports.

<sup>2</sup>The number of Intakes, CPS Reports, and CWS Referrals are based on an extract from NJSpirit. Data extracted by the Office of Research, Evaluation, and Reporting on **September 9, 2019** includes all Intakes, CPS Reports, and CWS Referrals received from **August 1, 2019 through August 31, 2019**.

<sup>3</sup>The number calls received through the ACD System that were directed to a screener from any call-in phone number.

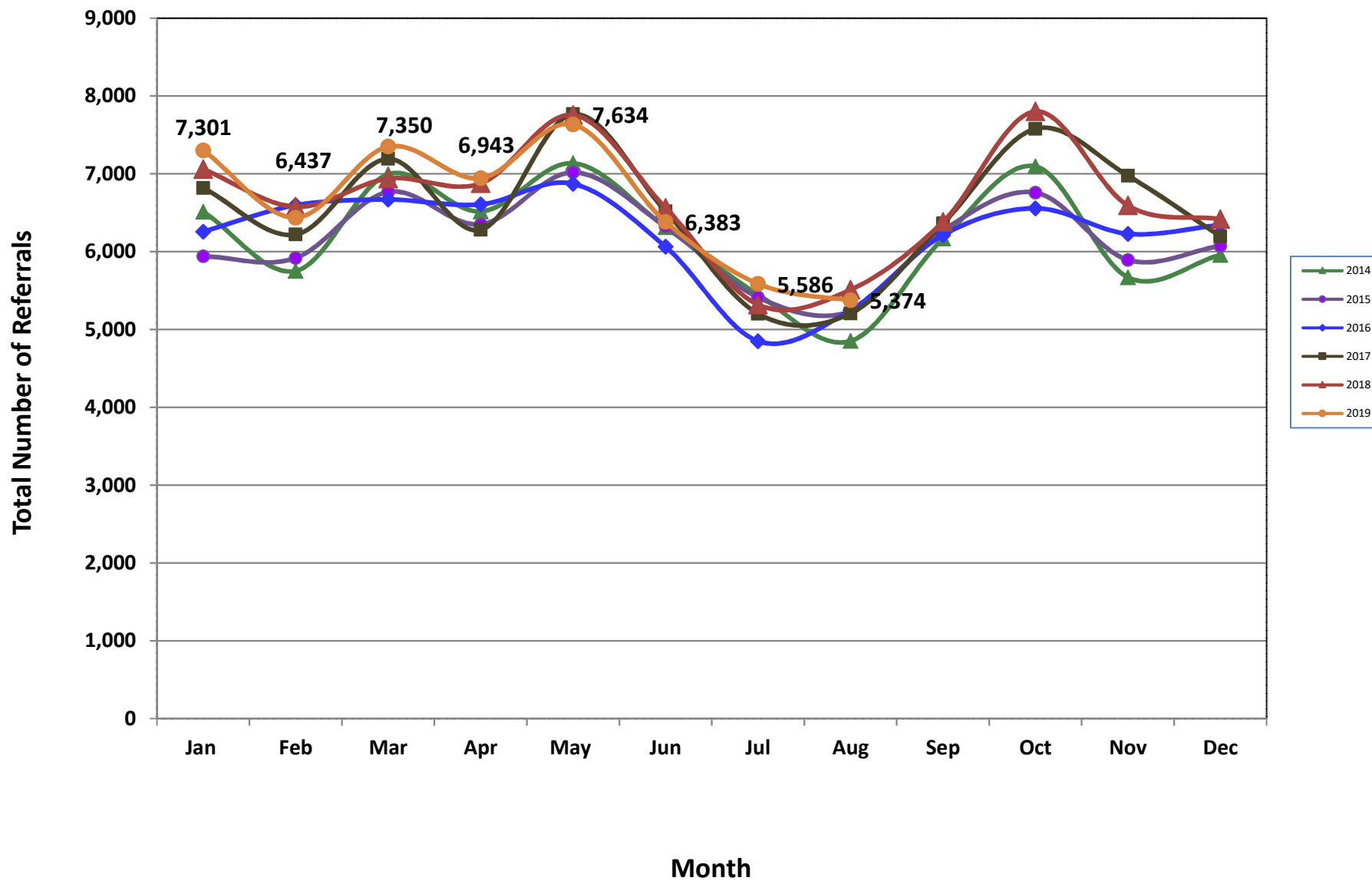
<sup>4</sup>The number of calls received through the ACD System that are abandoned either while waiting in queue or while ringing.

<sup>5</sup>The number of Intakes entered in NJSpirit from the number of calls received.

<sup>6</sup>The number of Intakes recorded in NJSpirit, by type of Intake. There is not a one-to-one relationship between an ACD call and an Intake; multiple calls to State Central Registry (SCR) may result in a single Intake, or one call may result in multiple Intakes.

<sup>7</sup>Intake: The process of documenting: a report of alleged abuse or neglect of a child (CPS); a request for services on behalf of a child, or a referral of a child for services (CWS); a call in which the caller provides additional or clarifying information about a current service case or active investigation (RI); informing a caller of, or referring a caller to, services available from other private or public sources (I&R); a call that requires no action by CP&P (NAR); or a response to a simple inquiry (IO).

### CP&P Annual Trends in CPS Reports and CWS Referrals



**Table 2: Assignments to CP&P Offices: CPS Reports and CWS Referrals<sup>1</sup>**

Intake Date <sup>3</sup>		CPS Reports <sup>2</sup>	CWS Referrals <sup>2</sup>	Total Assignments <sup>2</sup>
2014	Jan 2014	5,097	1,416	6,513
	Feb 2014	4,457	1,295	5,752
	Mar 2014	5,408	1,586	6,994
	Apr 2014	5,049	1,467	6,516
	May 2014	5,501	1,635	7,136
	Jun 2014	4,796	1,517	6,313
	Jul 2014	4,202	1,247	5,449
	Aug 2014	3,629	1,222	4,851
	Sep 2014	4,668	1,498	6,166
	Oct 2014	5,509	1,586	7,095
	Nov 2014	4,254	1,416	5,670
	Dec 2014	4,509	1,447	5,956
	<b>Total</b>	<b>57,079</b>	<b>17,332</b>	<b>74,411</b>
2015	Jan 2015	4,549	1,391	5,940
	Feb 2015	4,574	1,345	5,919
	Mar 2015	5,187	1,580	6,767
	Apr 2015	4,967	1,384	6,351
	May 2015	5,457	1,561	7,018
	Jun 2015	4,887	1,436	6,323
	Jul 2015	4,140	1,273	5,413
	Aug 2015	3,978	1,256	5,234
	Sep 2015	4,776	1,495	6,271
	Oct 2015	5,139	1,619	6,758
	Nov 2015	4,417	1,477	5,894
	Dec 2015	4,530	1,544	6,074
	<b>Total</b>	<b>56,601</b>	<b>17,361</b>	<b>73,962</b>
	Jan 2016	4,686	1,571	6,257
	Feb 2016	4,974	1,622	6,596
	Mar 2016	5,000	1,669	6,669
	Apr 2016	5,065	1,542	6,607
	May 2016	5,238	1,633	6,871
	Jun 2016	4,602	1,461	6,063
	Jul 2016	3,663	1,187	4,850
	Aug 2016	3,941	1,307	5,248
	Sep 2016	4,654	1,559	6,213
	Oct 2016	4,935	1,622	6,557
	Nov 2016	4,677	1,552	6,229
	Dec 2016	4,762	1,580	6,342
	<b>Total</b>	<b>56,197</b>	<b>18,305</b>	<b>74,502</b>

**Table 2: Assignments to CP&P Offices: CPS Reports and CWS Referrals<sup>1</sup>**

Intake Date <sup>3</sup>		CPS Reports <sup>2</sup>	CWS Referrals <sup>2</sup>	Total Assignments <sup>2</sup>
2017	Jan 2017	5,111	1,708	6,819
	Feb 2017	4,716	1,504	6,220
	Mar 2017	5,349	1,843	7,192
	Apr 2017	4,790	1,490	6,280
	May 2017	5,847	1,919	7,766
	Jun 2017	4,853	1,665	6,518
	Jul 2017	3,814	1,389	5,203
	Aug 2017	3,866	1,340	5,206
	Sep 2017	4,719	1,643	6,362
	Oct 2017	5,613	1,966	7,579
	Nov 2017	5,223	1,753	6,976
	Dec 2017	4,601	1,594	6,195
	<b>Total</b>	<b>58,502</b>	<b>19,814</b>	<b>78,316</b>
2018	Jan 2018	5,276	1,784	7,060
	Feb 2018	4,933	1,644	6,577
	Mar 2018	5,212	1,727	6,939
	Apr 2018	5,275	1,601	6,876
	May 2018	5,920	1,836	7,756
	Jun 2018	4,948	1,615	6,563
	Jul 2018	4,011	1,308	5,319
	Aug 2018	4,102	1,408	5,510
	Sep 2018	4,748	1,634	6,382
	Oct 2018	5,790	2,011	7,801
	Nov 2018	4,973	1,620	6,593
	Dec 2018	4,891	1,527	6,418
	<b>Total</b>	<b>60,079</b>	<b>19,715</b>	<b>79,794</b>
2019	Jan 2019	5,443	1,858	7,301
	Feb 2019	4,811	1,628	6,439
	Mar 2019	5,677	1,824	7,501
	Apr 2019	5,313	1,630	6,943
	May 2019	5,853	1,781	7,634
	June 2019	4,874	1,509	6,383
	July 2019	4,277	1,309	5,586
	Aug 2019	4,068	1,306	5,374
	<b>Total</b>	<b>27,097</b>	<b>8,721</b>	<b>35,818</b>
<b>Grand Total</b>		<b>315,555</b>	<b>101,248</b>	<b>416,803</b>

<sup>1</sup>Source of Data: NJ SPIRIT

<sup>2</sup>A CPS Report or a CWS Referral may include multiple children in a family, with one or more allegation or request for services. In these cases, each CPS Report or CWS Referral is counted once - the CPS Report or the CWS Referral is the unit of analysis rather than the child.

<sup>3</sup>Prior to January 2014, the number of CPS Reports and CWS Referrals was based on the type of assignment of the CPS Report or CWS Referral. Beginning in January 2014, the number of CPS Reports and CWS Referrals is based on the number of CPS Reports and CWS Referrals received.

**Table 3: Source of CPS Reports and CWS Referrals**

CPS Reports and CWS Referrals	Source	Aug 2018	Sep 2018	Oct 2018	Nov 2018	Dec 2018	Jan 2019	Feb 2019	Mar 2019	Apr 2019	May 2019	June 2019	July 2019	Aug 2019		13 Month Total	
	School Staff	118	1,237	2,256	1,769	1,643	2,151	1,887	2,388	1,732	2,167	1,163	211	90	2%	18,812	22%
	Healthcare Provider	920	928	1,018	954	891	999	858	977	955	1,033	970	964	917	17%	12,384	14%
	Law Enforcement	1,201	1,251	1,188	1,186	1,186	1,131	1,156	1,290	1,329	1,409	1,437	1,416	1,320	25%	16,500	19%
	Government Agency	468	428	521	430	387	417	345	374	392	477	387	448	391	7%	5,465	6%
	Parent	590	569	563	491	481	512	419	513	509	525	492	549	583	11%	6,796	8%
	Relative/Friend/Neighbor	488	475	452	370	393	447	359	399	456	400	418	482	479	9%	5,618	7%
	Anonymous	573	565	769	576	609	656	586	686	641	715	629	493	544	10%	8,042	9%
	CP&P	142	106	131	99	109	125	118	130	107	102	104	126	129	2%	1,528	2%
	Court/Legal	193	141	171	101	132	190	155	162	182	176	158	189	223	4%	2,173	3%
	Community Group/Individual	317	301	301	264	234	274	234	253	257	257	242	279	268	5%	3,481	4%
	Facility Staff (incl Correctional Facility)	135	103	97	86	79	88	57	85	88	81	76	88	92	2%	1,155	1%
	Child (Self)	53	35	51	30	35	23	29	25	32	37	37	50	47	1%	484	1%
	Other	289	228	262	218	226	270	219	204	245	244	248	277	272	5%	3,202	4%
Daycare/Babysitter	23	15	21	19	13	18	17	15	18	11	22	14	19	0%	225	0%	
<b>Total</b>	<b>5,510</b>	<b>6,382</b>	<b>7,801</b>	<b>6,593</b>	<b>6,418</b>	<b>7,301</b>	<b>6,439</b>	<b>7,501</b>	<b>7,501</b>	<b>7,634</b>	<b>6,383</b>	<b>6,383</b>	<b>5,374</b>		<b>85,865</b>		

**Table 4: Monthly Count of CPS Reports and CWS Referrals Assigned to Counties**

County														Average Number of Assignments Last 13 Months	Jul 19 to Aug 19 Numerical Difference
	Aug 2018	Sep 2018	Oct 2018	Nov 2018	Dec 2018	Jan 2019	Feb 2019	Mar 2019	Apr 2019	May 2019	June 2019	July 2019	Aug 2019		
Atlantic	231	295	280	264	243	285	274	296	273	318	279	235	235	270	117%
Bergen	243	333	467	412	377	460	369	460	439	486	376	273	285	383	12
Burlington	246	270	348	313	318	338	361	337	330	351	288	262	264	310	2
Camden	485	543	606	515	469	577	485	619	559	588	484	442	422	523	-20
Cape May	85	109	87	73	68	103	83	74	88	70	82	96	80	84	-16
Cumberland	205	225	232	204	200	218	191	235	202	219	214	187	158	207	-29
Essex	622	666	859	712	694	798	723	795	740	851	693	604	622	721	18
Gloucester	229	215	260	235	233	302	250	272	296	341	265	250	232	260	-18
Hudson	342	426	540	420	425	475	410	518	457	510	422	346	307	431	-39
Hunterdon	49	57	75	58	59	48	52	71	50	67	64	42	48	57	6
Mercer	247	231	365	298	283	298	301	331	295	292	298	264	265	290	1
Middlesex	366	433	563	426	472	527	476	505	449	505	412	337	357	448	20
Monmouth	277	410	426	380	352	433	333	424	359	424	376	295	287	367	-8
Morris	186	215	292	224	242	264	215	244	241	303	200	181	187	230	6
Ocean	371	386	482	450	408	428	382	440	460	459	386	385	337	413	-48
Passaic	383	421	567	461	438	482	394	527	485	535	431	356	327	447	-29
Salem	77	104	90	72	70	97	71	75	91	77	57	83	85	81	2
Somerset	128	155	200	181	165	160	158	196	158	167	155	155	114	161	-41
Sussex	82	99	120	81	97	100	122	116	94	114	104	83	107	101	24
Union	221	328	396	351	343	401	359	405	353	398	317	276	252	338	-24
Warren	105	118	105	93	104	89	73	118	131	104	102	82	88	101	6
<b>County Subtotals</b>	<b>5,180</b>	<b>6,039</b>	<b>7,360</b>	<b>6,223</b>	<b>6,060</b>	<b>6,883</b>	<b>6,082</b>	<b>7,058</b>	<b>6,550</b>	<b>7,179</b>	<b>6,005</b>	<b>5,234</b>	<b>5,059</b>	<b>6,224</b>	<b>-175</b>
Central Region IAIU	57	39	67	63	47	61	47	61	66	82	57	58	41	57	-17
Metro Region IAIU	38	50	65	61	51	55	47	62	45	64	41	36	42	51	6
Northern Region IAIU	34	63	71	70	64	58	74	83	57	89	64	53	37	63	-16
Southern Region IAIU	76	67	100	58	71	92	70	85	90	90	69	66	57	76	-9
<b>IAIU Subtotals</b>	<b>205</b>	<b>219</b>	<b>303</b>	<b>252</b>	<b>233</b>	<b>266</b>	<b>238</b>	<b>291</b>	<b>258</b>	<b>325</b>	<b>231</b>	<b>213</b>	<b>177</b>	<b>247</b>	<b>-36</b>
<b>Unable to Determine<sup>1</sup></b>	<b>122</b>	<b>123</b>	<b>135</b>	<b>117</b>	<b>121</b>	<b>149</b>	<b>119</b>	<b>151</b>	<b>132</b>	<b>127</b>	<b>147</b>	<b>138</b>	<b>138</b>	<b>132</b>	<b>0</b>
<b>Other Offices</b>	<b>3</b>	<b>1</b>	<b>3</b>	<b>1</b>	<b>4</b>	<b>3</b>	<b>0</b>	<b>1</b>	<b>3</b>	<b>3</b>	<b>0</b>	<b>1</b>	<b>0</b>	<b>2</b>	<b>-1</b>
<b>Grand Total</b>	<b>5,510</b>	<b>6,382</b>	<b>7,801</b>	<b>6,593</b>	<b>6,418</b>	<b>7,301</b>	<b>6,439</b>	<b>7,501</b>	<b>6,943</b>	<b>7,634</b>	<b>6,383</b>	<b>5,586</b>	<b>5,374</b>	<b>6,605</b>	<b>-212</b>

<sup>1</sup>CPS Reports or CWS Referrals not assigned to an office through the Assignment Designee, but were assigned to an office for an assessment or investigation.



**Table 5: Monthly Count of CPS Reports and CWS Referrals Assigned to CP&P Local Offices**

County	Local Office	Type of Referral														Total
			Aug 2018	Sep 2018	Oct 2018	Nov 2018	Dec 2018	Jan 2019	Feb 2019	Mar 2019	Apr 2019	May 2019	June 2019	July 2019	Aug 2019	
ATLANTIC	Atlantic East	CPS	106	132	132	139	107	140	128	148	123	150	126	110	102	1,643
		CWS	46	43	50	40	43	32	33	42	36	41	34	34	30	504
		<b>Total</b>	<b>152</b>	<b>175</b>	<b>182</b>	<b>179</b>	<b>150</b>	<b>172</b>	<b>161</b>	<b>190</b>	<b>159</b>	<b>191</b>	<b>160</b>	<b>144</b>	<b>132</b>	<b>2,147</b>
	Atlantic West	CPS	60	89	80	73	72	86	84	81	88	111	86	69	77	1,056
		CWS	19	31	18	12	21	27	29	25	26	16	33	22	26	305
		<b>Total</b>	<b>79</b>	<b>120</b>	<b>98</b>	<b>85</b>	<b>93</b>	<b>113</b>	<b>113</b>	<b>106</b>	<b>114</b>	<b>127</b>	<b>119</b>	<b>91</b>	<b>103</b>	<b>1,361</b>
	County Totals	CPS	166	221	212	212	179	226	212	229	211	261	212	179	179	2,699
		CWS	65	74	68	52	64	59	62	67	62	57	67	56	56	809
		<b>Total</b>	<b>231</b>	<b>295</b>	<b>280</b>	<b>264</b>	<b>243</b>	<b>285</b>	<b>274</b>	<b>296</b>	<b>273</b>	<b>318</b>	<b>279</b>	<b>235</b>	<b>235</b>	<b>3,508</b>
BERGEN	Bergen Central	CPS	59	88	147	103	119	137	98	129	134	160	122	91	98	1,485
		CWS	25	44	60	51	39	67	56	45	55	64	36	23	31	596
		<b>Total</b>	<b>84</b>	<b>132</b>	<b>207</b>	<b>154</b>	<b>158</b>	<b>204</b>	<b>154</b>	<b>174</b>	<b>189</b>	<b>224</b>	<b>158</b>	<b>114</b>	<b>129</b>	<b>2,081</b>
	Bergen South	CPS	112	152	187	188	155	173	139	207	173	184	155	121	117	2,063
		CWS	47	49	73	70	64	83	76	79	77	78	63	38	39	836
		<b>Total</b>	<b>159</b>	<b>201</b>	<b>260</b>	<b>258</b>	<b>219</b>	<b>256</b>	<b>215</b>	<b>286</b>	<b>250</b>	<b>262</b>	<b>218</b>	<b>159</b>	<b>156</b>	<b>2,899</b>
	County Totals	CPS	171	240	334	291	274	310	237	336	307	344	277	212	215	3,548
		CWS	72	93	133	121	103	150	132	124	132	142	99	61	70	1,432
		<b>Total</b>	<b>243</b>	<b>333</b>	<b>467</b>	<b>412</b>	<b>377</b>	<b>460</b>	<b>369</b>	<b>460</b>	<b>439</b>	<b>486</b>	<b>376</b>	<b>273</b>	<b>285</b>	<b>4,980</b>
BURLINGTON	Burlington East	CPS	93	93	131	124	128	132	150	128	142	119	117	127	108	1,592
		CWS	33	31	53	38	38	41	41	43	46	45	34	21	38	502
		<b>Total</b>	<b>126</b>	<b>124</b>	<b>184</b>	<b>162</b>	<b>166</b>	<b>173</b>	<b>191</b>	<b>171</b>	<b>188</b>	<b>164</b>	<b>151</b>	<b>148</b>	<b>146</b>	<b>2,094</b>
	Burlington West	CPS	83	113	124	121	123	123	133	122	109	137	96	85	92	1,461
		CWS	37	33	40	30	29	42	37	44	33	50	41	29	26	471
		<b>Total</b>	<b>120</b>	<b>146</b>	<b>164</b>	<b>151</b>	<b>152</b>	<b>165</b>	<b>170</b>	<b>166</b>	<b>142</b>	<b>187</b>	<b>137</b>	<b>114</b>	<b>118</b>	<b>1,932</b>
	County Totals	CPS	176	206	255	245	251	255	283	250	251	256	213	212	200	3,053
		CWS	70	64	93	68	67	83	78	87	79	95	75	50	64	973
		<b>Total</b>	<b>246</b>	<b>270</b>	<b>348</b>	<b>313</b>	<b>318</b>	<b>338</b>	<b>361</b>	<b>337</b>	<b>330</b>	<b>351</b>	<b>288</b>	<b>262</b>	<b>264</b>	<b>4,026</b>
CAMDEN	Camden Central	CPS	109	103	116	110	104	137	98	146	118	104	112	87	106	1,450
		CWS	27	36	41	27	27	31	34	34	33	33	27	16	22	388
		<b>Total</b>	<b>136</b>	<b>139</b>	<b>157</b>	<b>137</b>	<b>131</b>	<b>168</b>	<b>132</b>	<b>180</b>	<b>151</b>	<b>137</b>	<b>139</b>	<b>103</b>	<b>128</b>	<b>1,838</b>
	Camden East	CPS	99	106	110	103	81	95	83	123	107	122	91	83	70	1,273
		CWS	36	44	39	29	26	35	21	38	31	34	27	36	15	411
		<b>Total</b>	<b>135</b>	<b>150</b>	<b>149</b>	<b>132</b>	<b>107</b>	<b>130</b>	<b>104</b>	<b>161</b>	<b>138</b>	<b>156</b>	<b>118</b>	<b>119</b>	<b>85</b>	<b>1,684</b>
	Camden North	CPS	74	91	119	94	96	110	111	110	121	117	93	77	84	1,297
		CWS	33	34	42	31	19	36	42	43	30	34	26	32	25	427
		<b>Total</b>	<b>107</b>	<b>125</b>	<b>161</b>	<b>125</b>	<b>115</b>	<b>146</b>	<b>153</b>	<b>153</b>	<b>151</b>	<b>151</b>	<b>119</b>	<b>109</b>	<b>109</b>	<b>1,724</b>
	Camden South	CPS	85	98	108	89	91	103	73	97	95	118	77	83	68	1,185
		CWS	22	31	31	32	25	30	23	28	24	26	31	28	32	363
		<b>Total</b>	<b>107</b>	<b>129</b>	<b>139</b>	<b>121</b>	<b>116</b>	<b>133</b>	<b>96</b>	<b>125</b>	<b>119</b>	<b>144</b>	<b>108</b>	<b>111</b>	<b>100</b>	<b>1,548</b>
	County Totals	CPS	367	398	453	396	372	445	365	476	441	461	373	330	328	5,205
		CWS	118	145	153	119	97	132	120	143	118	127	111	112	94	1,589
		<b>Total</b>	<b>485</b>	<b>543</b>	<b>606</b>	<b>515</b>	<b>469</b>	<b>577</b>	<b>485</b>	<b>619</b>	<b>559</b>	<b>588</b>	<b>484</b>	<b>442</b>	<b>422</b>	<b>6,794</b>
CAPE MAY	Cape May	CPS	73	89	64	56	60	79	63	58	75	57	63	72	67	876
		CWS	12	20	23	17	8	24	20	16	13	13	19	24	13	222
		<b>Total</b>	<b>85</b>	<b>109</b>	<b>87</b>	<b>73</b>	<b>68</b>	<b>103</b>	<b>83</b>	<b>74</b>	<b>88</b>	<b>70</b>	<b>82</b>	<b>96</b>	<b>80</b>	<b>1,098</b>
	County Totals	CPS	73	89	64	56	60	79	63	58	75	57	63	72	67	876
		<b>Total</b>	<b>85</b>	<b>109</b>	<b>87</b>	<b>73</b>	<b>68</b>	<b>103</b>	<b>83</b>	<b>74</b>	<b>88</b>	<b>70</b>	<b>82</b>	<b>96</b>	<b>80</b>	<b>1,098</b>
CUMBERLAND	Cumberland East	CPS	44	60	55	47	45	43	54	68	58	49	50	45	50	668
		CWS	13	15	18	15	13	17	9	13	12	25	24	12	13	199
		<b>Total</b>	<b>57</b>	<b>75</b>	<b>73</b>	<b>62</b>	<b>58</b>	<b>60</b>	<b>63</b>	<b>81</b>	<b>70</b>	<b>74</b>	<b>74</b>	<b>57</b>	<b>63</b>	<b>867</b>
	Cumberland West	CPS	118	118	116	106	116	119	100	124	103	116	118	101	75	1,430
		CWS	30	32	43	36	26	39	28	30	29	29	22	29	20	393
		<b>Total</b>	<b>148</b>	<b>150</b>	<b>159</b>	<b>142</b>	<b>142</b>	<b>158</b>	<b>128</b>	<b>154</b>	<b>132</b>	<b>145</b>	<b>140</b>	<b>130</b>	<b>95</b>	<b>1,823</b>
	County Totals	CPS	162	178	171	153	161	162	154	192	161	165	168	146	125	2,098
		CWS	43	47	61	51	39	56	37	43	41	54	46	41	33	592
		<b>Total</b>	<b>205</b>	<b>225</b>	<b>232</b>	<b>204</b>	<b>200</b>	<b>218</b>	<b>191</b>	<b>235</b>	<b>202</b>	<b>219</b>	<b>214</b>	<b>187</b>	<b>158</b>	<b>2,690</b>

**Table 5: Monthly Count of CPS Reports and CWS Referrals Assigned to CP&P Local Offices**

County	Local Office	Type of Referral														Total
			Aug 2018	Sep 2018	Oct 2018	Nov 2018	Dec 2018	Jan 2019	Feb 2019	Mar 2019	Apr 2019	May 2019	June 2019	July 2019	Aug 2019	
ESSEX	Essex Central	CPS	92	68	97	103	90	107	97	107	89	102	93	94	88	1,227
		CWS	23	41	35	35	26	37	33	42	26	34	36	36	25	429
		<b>Total</b>	<b>115</b>	<b>109</b>	<b>132</b>	<b>138</b>	<b>116</b>	<b>144</b>	<b>130</b>	<b>149</b>	<b>115</b>	<b>136</b>	<b>129</b>	<b>130</b>	<b>113</b>	<b>1,656</b>
	Essex North	CPS	61	65	82	74	65	72	76	73	76	85	62	53	58	902
		CWS	15	28	31	25	20	32	25	24	21	29	32	17	31	330
		<b>Total</b>	<b>76</b>	<b>93</b>	<b>113</b>	<b>99</b>	<b>85</b>	<b>104</b>	<b>101</b>	<b>97</b>	<b>97</b>	<b>114</b>	<b>94</b>	<b>70</b>	<b>89</b>	<b>1,232</b>
	Essex South	CPS	76	63	80	70	77	86	76	94	90	94	71	48	46	971
		CWS	17	28	44	24	20	27	46	35	39	32	23	15	26	376
		<b>Total</b>	<b>93</b>	<b>91</b>	<b>124</b>	<b>94</b>	<b>97</b>	<b>113</b>	<b>122</b>	<b>129</b>	<b>129</b>	<b>126</b>	<b>94</b>	<b>63</b>	<b>72</b>	<b>1347</b>
	Newark Center City	CPS	81	102	123	91	98	103	96	89	96	128	85	86	95	1273
		CWS	26	27	44	36	25	38	32	33	31	34	31	27	23	407
		<b>Total</b>	<b>107</b>	<b>129</b>	<b>167</b>	<b>127</b>	<b>123</b>	<b>141</b>	<b>128</b>	<b>122</b>	<b>127</b>	<b>162</b>	<b>116</b>	<b>113</b>	<b>118</b>	<b>1680</b>
	Newark Northeast	CPS	84	76	117	105	101	111	83	112	104	118	89	84	77	1261
		CWS	35	29	58	30	24	28	26	35	38	29	25	29	22	408
<b>Total</b>		<b>119</b>	<b>105</b>	<b>175</b>	<b>135</b>	<b>125</b>	<b>139</b>	<b>109</b>	<b>147</b>	<b>142</b>	<b>147</b>	<b>114</b>	<b>113</b>	<b>99</b>	<b>1669</b>	
Newark South	CPS	76	93	111	92	102	118	103	116	98	121	118	85	90	1323	
	CWS	36	46	37	27	46	39	30	35	32	45	28	30	41	472	
	<b>Total</b>	<b>112</b>	<b>139</b>	<b>148</b>	<b>119</b>	<b>148</b>	<b>157</b>	<b>133</b>	<b>151</b>	<b>130</b>	<b>166</b>	<b>146</b>	<b>115</b>	<b>131</b>	<b>1795</b>	
County Totals	CPS	470	467	610	535	533	597	531	591	553	648	518	450	454	6957	
	CWS	152	199	249	177	161	201	192	204	187	203	175	154	168	2422	
	<b>Total</b>	<b>622</b>	<b>666</b>	<b>859</b>	<b>712</b>	<b>694</b>	<b>798</b>	<b>723</b>	<b>795</b>	<b>740</b>	<b>851</b>	<b>693</b>	<b>604</b>	<b>622</b>	<b>9379</b>	
GLOUCESTER	Gloucester East	CPS	76	86	104	85	70	108	88	104	101	134	114	80	92	1242
		CWS	31	22	41	25	30	29	28	29	42	33	23	26	21	380
		<b>Total</b>	<b>107</b>	<b>108</b>	<b>145</b>	<b>110</b>	<b>100</b>	<b>137</b>	<b>116</b>	<b>133</b>	<b>143</b>	<b>167</b>	<b>137</b>	<b>106</b>	<b>113</b>	<b>1622</b>
	Gloucester West	CPS	101	79	92	95	105	130	101	112	129	139	105	115	85	1388
		CWS	21	28	23	30	28	35	33	27	24	35	23	29	34	370
		<b>Total</b>	<b>122</b>	<b>107</b>	<b>115</b>	<b>125</b>	<b>133</b>	<b>165</b>	<b>134</b>	<b>139</b>	<b>153</b>	<b>174</b>	<b>128</b>	<b>144</b>	<b>119</b>	<b>1758</b>
	County Totals	CPS	177	165	196	180	175	238	189	216	230	273	219	195	177	2630
CWS		52	50	64	55	58	64	61	56	66	68	46	55	55	750	
<b>Total</b>		<b>229</b>	<b>215</b>	<b>260</b>	<b>235</b>	<b>233</b>	<b>302</b>	<b>250</b>	<b>272</b>	<b>296</b>	<b>341</b>	<b>265</b>	<b>250</b>	<b>232</b>	<b>3380</b>	
HUDSON	Hudson Central	CPS	89	93	141	91	117	107	104	129	113	116	101	102	94	1397
		CWS	39	43	43	37	41	47	37	46	35	20	19	32	22	461
		<b>Total</b>	<b>128</b>	<b>136</b>	<b>184</b>	<b>128</b>	<b>158</b>	<b>154</b>	<b>141</b>	<b>175</b>	<b>148</b>	<b>136</b>	<b>120</b>	<b>134</b>	<b>116</b>	<b>1858</b>
	Hudson North	CPS	51	71	92	62	72	87	67	81	77	95	65	57	36	913
		CWS	14	26	33	28	27	40	28	28	30	33	26	21	22	356
		<b>Total</b>	<b>65</b>	<b>97</b>	<b>125</b>	<b>90</b>	<b>99</b>	<b>127</b>	<b>95</b>	<b>109</b>	<b>107</b>	<b>128</b>	<b>91</b>	<b>78</b>	<b>58</b>	<b>1269</b>
	Hudson South	CPS	43	41	60	48	48	55	47	66	52	63	51	37	45	656
		CWS	17	34	23	35	22	15	22	25	21	44	36	14	14	322
		<b>Total</b>	<b>60</b>	<b>75</b>	<b>83</b>	<b>83</b>	<b>70</b>	<b>70</b>	<b>69</b>	<b>91</b>	<b>73</b>	<b>107</b>	<b>87</b>	<b>51</b>	<b>59</b>	<b>978</b>
	Hudson West	CPS	59	84	94	87	72	87	69	93	97	105	102	58	53	1060
		CWS	30	34	54	32	26	37	36	50	32	34	22	25	21	433
		<b>Total</b>	<b>89</b>	<b>118</b>	<b>148</b>	<b>119</b>	<b>98</b>	<b>124</b>	<b>105</b>	<b>143</b>	<b>129</b>	<b>139</b>	<b>124</b>	<b>83</b>	<b>74</b>	<b>1493</b>
County Totals	CPS	242	289	387	288	309	336	287	369	339	379	319	254	228	4026	
	CWS	100	137	153	132	116	139	123	149	118	131	103	92	79	1572	
	<b>Total</b>	<b>342</b>	<b>426</b>	<b>540</b>	<b>420</b>	<b>425</b>	<b>475</b>	<b>410</b>	<b>518</b>	<b>457</b>	<b>510</b>	<b>422</b>	<b>346</b>	<b>307</b>	<b>5598</b>	
HUNTERDON	Hunterdon	CPS	40	40	56	44	47	33	33	52	42	53	47	31	33	551
		CWS	9	17	19	14	12	15	19	19	8	14	17	11	15	189
		<b>Total</b>	<b>49</b>	<b>57</b>	<b>75</b>	<b>58</b>	<b>59</b>	<b>48</b>	<b>52</b>	<b>71</b>	<b>50</b>	<b>67</b>	<b>64</b>	<b>42</b>	<b>48</b>	<b>740</b>
	County Totals	CPS	40	40	56	44	47	33	33	52	42	53	47	31	33	551
		CWS	9	17	19	14	12	15	19	19	8	14	17	11	15	189
<b>Total</b>	<b>49</b>	<b>57</b>	<b>75</b>	<b>58</b>	<b>59</b>	<b>48</b>	<b>52</b>	<b>71</b>	<b>50</b>	<b>67</b>	<b>64</b>	<b>42</b>	<b>48</b>	<b>740</b>		
MERCER	Mercer North	CPS	107	84	139	113	110	117	114	125	110	114	95	81	90	1399
		CWS	28	25	57	50	31	39	43	41	44	45	46	45	24	518
		<b>Total</b>	<b>135</b>	<b>109</b>	<b>196</b>	<b>163</b>	<b>141</b>	<b>156</b>	<b>157</b>	<b>166</b>	<b>154</b>	<b>159</b>	<b>141</b>	<b>126</b>	<b>114</b>	<b>1917</b>
	Mercer South	CPS	78	89	125	95	109	101	104	125	107	97	122	112	116	1380
		CWS	34	33	44	40	33	41	40	40	34	36	35	26	35	471
		<b>Total</b>	<b>112</b>	<b>122</b>	<b>169</b>	<b>135</b>	<b>142</b>	<b>142</b>	<b>144</b>	<b>165</b>	<b>141</b>	<b>133</b>	<b>157</b>	<b>138</b>	<b>151</b>	<b>1851</b>
	County Totals	CPS	185	173	264	208	219	218	218	250	217	211	217	193	206	2779
CWS		62	58	101	90	64	80	83	81	78	81	81	71	59	989	
<b>Total</b>		<b>247</b>	<b>231</b>	<b>365</b>	<b>298</b>	<b>283</b>	<b>298</b>	<b>301</b>	<b>331</b>	<b>295</b>	<b>292</b>	<b>298</b>	<b>264</b>	<b>265</b>	<b>3768</b>	



**Table 5: Monthly Count of CPS Reports and CWS Referrals Assigned to CP&P Local Offices**

County	Local Office	Type of Referral														Total
			Aug 2018	Sep 2018	Oct 2018	Nov 2018	Dec 2018	Jan 2019	Feb 2019	Mar 2019	Apr 2019	May 2019	June 2019	July 2019	Aug 2019	
MIDDLESEX	Middlesex Central	CPS	62	75	116	93	102	125	113	126	91	110	85	83	77	1258
		CWS	28	30	31	28	33	33	38	25	36	37	23	25	24	391
		<b>Total</b>	<b>90</b>	<b>105</b>	<b>147</b>	<b>121</b>	<b>135</b>	<b>158</b>	<b>151</b>	<b>151</b>	<b>127</b>	<b>147</b>	<b>108</b>	<b>108</b>	<b>101</b>	<b>1649</b>
	Middlesex Coastal	CPS	100	120	161	110	120	148	130	127	133	149	113	88	115	1614
		CWS	37	39	49	39	42	49	43	46	34	39	37	26	32	512
		<b>Total</b>	<b>137</b>	<b>159</b>	<b>210</b>	<b>149</b>	<b>162</b>	<b>197</b>	<b>173</b>	<b>173</b>	<b>167</b>	<b>188</b>	<b>150</b>	<b>114</b>	<b>147</b>	<b>2126</b>
	Middlesex West	CPS	88	129	168	108	138	126	116	132	116	125	110	80	76	1512
		CWS	51	40	38	48	37	46	36	49	39	45	44	35	33	541
		<b>Total</b>	<b>139</b>	<b>169</b>	<b>206</b>	<b>156</b>	<b>175</b>	<b>172</b>	<b>152</b>	<b>181</b>	<b>155</b>	<b>170</b>	<b>154</b>	<b>115</b>	<b>109</b>	<b>2053</b>
	County Totals	CPS	250	324	445	311	360	399	359	385	340	384	308	251	268	4384
CWS		116	109	118	115	112	128	117	120	109	121	104	86	89	1444	
<b>Total</b>		<b>366</b>	<b>433</b>	<b>563</b>	<b>426</b>	<b>472</b>	<b>527</b>	<b>476</b>	<b>505</b>	<b>449</b>	<b>505</b>	<b>412</b>	<b>337</b>	<b>357</b>	<b>5828</b>	
MONMOUTH	Monmouth North	CPS	107	159	165	133	158	190	128	181	147	203	142	119	120	1952
		CWS	36	61	62	42	49	64	49	57	49	63	55	42	39	668
		<b>Total</b>	<b>143</b>	<b>220</b>	<b>227</b>	<b>175</b>	<b>207</b>	<b>254</b>	<b>177</b>	<b>238</b>	<b>196</b>	<b>266</b>	<b>197</b>	<b>161</b>	<b>159</b>	<b>2620</b>
	Monmouth South	CPS	91	149	149	151	100	145	114	138	120	118	136	110	101	1622
		CWS	43	41	50	54	45	34	42	48	43	40	43	24	27	534
		<b>Total</b>	<b>134</b>	<b>190</b>	<b>199</b>	<b>205</b>	<b>145</b>	<b>179</b>	<b>156</b>	<b>186</b>	<b>163</b>	<b>158</b>	<b>179</b>	<b>134</b>	<b>128</b>	<b>2156</b>
	County Totals	CPS	198	308	314	284	258	335	242	319	267	321	278	229	221	3574
		CWS	79	102	112	96	94	98	91	105	92	103	98	66	66	1202
		<b>Total</b>	<b>277</b>	<b>410</b>	<b>426</b>	<b>380</b>	<b>352</b>	<b>433</b>	<b>333</b>	<b>424</b>	<b>359</b>	<b>424</b>	<b>376</b>	<b>295</b>	<b>287</b>	<b>4776</b>
	MORRIS	Morris East	CPS	74	75	100	84	91	84	75	74	94	107	69	63	65
CWS			20	24	42	19	37	49	22	21	21	36	16	21	16	344
<b>Total</b>			<b>94</b>	<b>99</b>	<b>142</b>	<b>103</b>	<b>128</b>	<b>133</b>	<b>97</b>	<b>95</b>	<b>115</b>	<b>143</b>	<b>85</b>	<b>84</b>	<b>81</b>	<b>1399</b>
Morris West		CPS	74	84	118	92	89	89	82	106	84	125	87	80	72	1182
		CWS	18	32	32	29	25	42	36	43	42	35	28	17	34	413
		<b>Total</b>	<b>92</b>	<b>116</b>	<b>150</b>	<b>121</b>	<b>114</b>	<b>131</b>	<b>118</b>	<b>149</b>	<b>126</b>	<b>160</b>	<b>115</b>	<b>97</b>	<b>106</b>	<b>1595</b>
County Totals		CPS	148	159	218	176	180	173	157	180	178	232	156	143	137	2237
		CWS	38	56	74	48	62	91	58	64	63	71	44	38	50	757
		<b>Total</b>	<b>186</b>	<b>215</b>	<b>292</b>	<b>224</b>	<b>242</b>	<b>264</b>	<b>215</b>	<b>244</b>	<b>241</b>	<b>303</b>	<b>200</b>	<b>181</b>	<b>187</b>	<b>2994</b>
OCEAN		Ocean North	CPS	143	154	203	178	163	165	157	179	209	219	148	149	134
	CWS		38	40	68	60	46	65	48	53	53	63	40	48	41	663
	<b>Total</b>		<b>181</b>	<b>194</b>	<b>271</b>	<b>238</b>	<b>209</b>	<b>230</b>	<b>205</b>	<b>232</b>	<b>262</b>	<b>282</b>	<b>188</b>	<b>197</b>	<b>175</b>	<b>2864</b>
	Ocean South	CPS	135	160	166	170	160	147	147	163	148	140	157	152	121	1966
		CWS	55	32	45	42	39	51	30	45	50	37	41	36	41	544
		<b>Total</b>	<b>190</b>	<b>192</b>	<b>211</b>	<b>212</b>	<b>199</b>	<b>198</b>	<b>177</b>	<b>208</b>	<b>198</b>	<b>177</b>	<b>198</b>	<b>188</b>	<b>162</b>	<b>2510</b>
	County Totals	CPS	278	314	369	348	323	312	304	342	357	359	305	301	255	4167
		CWS	93	72	113	102	85	116	78	98	103	100	81	84	82	1207
		<b>Total</b>	<b>371</b>	<b>386</b>	<b>482</b>	<b>450</b>	<b>408</b>	<b>428</b>	<b>382</b>	<b>440</b>	<b>460</b>	<b>459</b>	<b>386</b>	<b>385</b>	<b>337</b>	<b>5374</b>
	PASSAIC	Passaic Central	CPS	128	164	207	177	157	192	160	181	195	198	157	132	119
CWS			51	55	93	66	68	66	59	94	71	79	55	35	36	828
<b>Total</b>			<b>179</b>	<b>219</b>	<b>300</b>	<b>243</b>	<b>225</b>	<b>258</b>	<b>219</b>	<b>275</b>	<b>266</b>	<b>277</b>	<b>212</b>	<b>167</b>	<b>155</b>	<b>2995</b>
Passaic North		CPS	147	128	189	158	146	148	124	181	172	188	160	139	121	2001
		CWS	57	74	78	60	67	76	51	71	47	70	59	50	51	811
		<b>Total</b>	<b>204</b>	<b>202</b>	<b>267</b>	<b>218</b>	<b>213</b>	<b>224</b>	<b>175</b>	<b>252</b>	<b>219</b>	<b>258</b>	<b>219</b>	<b>189</b>	<b>172</b>	<b>2812</b>
County Totals		CPS	275	292	396	335	303	340	284	362	367	386	317	271	240	4168
		CWS	108	129	171	126	135	142	110	165	118	149	114	85	87	1639
		<b>Total</b>	<b>383</b>	<b>421</b>	<b>567</b>	<b>461</b>	<b>438</b>	<b>482</b>	<b>394</b>	<b>527</b>	<b>485</b>	<b>535</b>	<b>431</b>	<b>356</b>	<b>327</b>	<b>5807</b>
SALEM		Salem	CPS	56	73	68	53	53	77	50	64	71	63	40	63	62
	CWS		21	31	22	19	17	20	21	11	20	14	17	20	23	256
	<b>Total</b>		<b>77</b>	<b>104</b>	<b>90</b>	<b>72</b>	<b>70</b>	<b>97</b>	<b>71</b>	<b>75</b>	<b>91</b>	<b>77</b>	<b>57</b>	<b>83</b>	<b>85</b>	<b>1049</b>
	County Totals	CPS	56	73	68	53	53	77	50	64	71	63	40	63	62	793
		<b>Total</b>	<b>77</b>	<b>104</b>	<b>90</b>	<b>72</b>	<b>70</b>	<b>97</b>	<b>71</b>	<b>75</b>	<b>91</b>	<b>77</b>	<b>57</b>	<b>83</b>	<b>85</b>	<b>1049</b>
SOMERSET	Somerset	CPS	93	125	153	137	128	122	122	161	116	128	121	117	84	1607
		CWS	35	30	47	44	37	38	36	35	42	39	34	38	30	485
		<b>Total</b>	<b>128</b>	<b>155</b>	<b>200</b>	<b>181</b>	<b>165</b>	<b>160</b>	<b>158</b>	<b>196</b>	<b>158</b>	<b>167</b>	<b>155</b>	<b>155</b>	<b>114</b>	<b>2092</b>
	County Totals	CPS	93	125	153	137	128	122	122	161	116	128	121	117	84	1607
		<b>Total</b>	<b>128</b>	<b>155</b>	<b>200</b>	<b>181</b>	<b>165</b>	<b>160</b>	<b>158</b>	<b>196</b>	<b>158</b>	<b>167</b>	<b>155</b>	<b>155</b>	<b>114</b>	<b>2092</b>

Data in this report is preliminary and may differ from any final report. This report is produced to ensure continuous quality improvement throughout DCF.

**Table 5: Monthly Count of CPS Reports and CWS Referrals Assigned to CP&P Local Offices**

County	Local Office	Type of Referral														Total	
			Aug 2018	Sep 2018	Oct 2018	Nov 2018	Dec 2018	Jan 2019	Feb 2019	Mar 2019	Apr 2019	May 2019	June 2019	July 2019	Aug 2019		
SUSSEX	Sussex	CPS	60	72	90	64	67	77	88	87	75	81	77	64	84	986	
		CWS	22	27	30	17	30	23	34	29	19	33	27	19	23	333	
		<b>Total</b>	<b>82</b>	<b>99</b>	<b>120</b>	<b>81</b>	<b>97</b>	<b>100</b>	<b>122</b>	<b>116</b>	<b>94</b>	<b>114</b>	<b>104</b>	<b>83</b>	<b>107</b>	<b>1319</b>	
	County Totals	CPS	60	72	90	64	67	77	88	87	75	81	77	64	84	986	
		CWS	22	27	30	17	30	23	34	29	19	33	27	19	23	333	
		<b>Total</b>	<b>82</b>	<b>99</b>	<b>120</b>	<b>81</b>	<b>97</b>	<b>100</b>	<b>122</b>	<b>116</b>	<b>94</b>	<b>114</b>	<b>104</b>	<b>83</b>	<b>107</b>	<b>1319</b>	
UNION	Union Central	CPS	54	76	98	85	81	104	87	99	100	95	95	70	75	1119	
		CWS	21	25	33	26	34	43	27	32	31	29	25	19	17	362	
		<b>Total</b>	<b>75</b>	<b>101</b>	<b>131</b>	<b>111</b>	<b>115</b>	<b>147</b>	<b>114</b>	<b>131</b>	<b>131</b>	<b>124</b>	<b>120</b>	<b>89</b>	<b>92</b>	<b>1481</b>	
	Union East	CPS	48	89	103	93	94	94	104	98	94	104	80	76	63	1140	
		CWS	21	34	36	29	26	35	38	45	22	30	25	21	22	384	
		<b>Total</b>	<b>69</b>	<b>123</b>	<b>139</b>	<b>122</b>	<b>120</b>	<b>129</b>	<b>142</b>	<b>143</b>	<b>116</b>	<b>134</b>	<b>105</b>	<b>97</b>	<b>85</b>	<b>1524</b>	
	Union West	CPS	54	77	84	88	83	98	79	98	76	103	71	68	55	1034	
		CWS	23	27	42	30	25	27	24	33	30	37	21	22	20	361	
		<b>Total</b>	<b>77</b>	<b>104</b>	<b>126</b>	<b>118</b>	<b>108</b>	<b>125</b>	<b>103</b>	<b>131</b>	<b>106</b>	<b>140</b>	<b>92</b>	<b>90</b>	<b>75</b>	<b>1395</b>	
	County Totals	CPS	156	242	285	266	258	296	270	295	270	302	246	214	193	3293	
		CWS	65	86	111	85	85	105	89	110	83	96	71	62	59	1107	
<b>Total</b>		<b>221</b>	<b>328</b>	<b>396</b>	<b>351</b>	<b>343</b>	<b>401</b>	<b>359</b>	<b>405</b>	<b>353</b>	<b>398</b>	<b>317</b>	<b>276</b>	<b>252</b>	<b>4400</b>		
WARREN	Warren	CPS	82	86	78	71	77	61	54	88	97	81	76	62	69	982	
		CWS	23	32	27	22	27	28	19	30	34	23	26	20	19	330	
		<b>Total</b>	<b>105</b>	<b>118</b>	<b>105</b>	<b>93</b>	<b>104</b>	<b>89</b>	<b>73</b>	<b>118</b>	<b>131</b>	<b>104</b>	<b>102</b>	<b>82</b>	<b>88</b>	<b>1312</b>	
	County Totals	CPS	82	86	78	71	77	61	54	88	97	81	76	62	69	982	
		CWS	23	32	27	22	27	28	19	30	34	23	26	20	19	330	
		<b>Total</b>	<b>105</b>	<b>118</b>	<b>105</b>	<b>93</b>	<b>104</b>	<b>89</b>	<b>73</b>	<b>118</b>	<b>131</b>	<b>104</b>	<b>102</b>	<b>82</b>	<b>88</b>	<b>1312</b>	
<b>County CPS Referral Total</b>		<b>CPS</b>	<b>3,825</b>	<b>4,461</b>	<b>5,418</b>	<b>4,653</b>	<b>4,587</b>	<b>5,091</b>	<b>4,502</b>	<b>5,302</b>	<b>4,965</b>	<b>5,445</b>	<b>4,550</b>	<b>3,989</b>	<b>3,825</b>	<b>60,613</b>	
<b>County CWS Referral Total</b>		<b>CWS</b>	<b>1,355</b>	<b>1,578</b>	<b>1,942</b>	<b>1,570</b>	<b>1,473</b>	<b>1,792</b>	<b>1,580</b>	<b>1,756</b>	<b>1,585</b>	<b>1,734</b>	<b>1,455</b>	<b>1,245</b>	<b>1,234</b>	<b>20,299</b>	
<b>County Referral Total</b>		<b>Total</b>	<b>5,180</b>	<b>6,039</b>	<b>7,360</b>	<b>6,223</b>	<b>6,060</b>	<b>6,883</b>	<b>6,082</b>	<b>7,058</b>	<b>6,550</b>	<b>7,179</b>	<b>6,005</b>	<b>5,234</b>	<b>5,059</b>	<b>80,912</b>	
Central Region IAIU		CPS	57	39	67	63	47	61	47	61	66	82	57	58	41	746	
		CWS	0	0	0	0	0	0	0	0	0	0	0	0	0	0	0
		<b>Total</b>	<b>57</b>	<b>39</b>	<b>67</b>	<b>63</b>	<b>47</b>	<b>61</b>	<b>47</b>	<b>61</b>	<b>66</b>	<b>82</b>	<b>57</b>	<b>58</b>	<b>41</b>	<b>746</b>	
Metro Region IAIU		CPS	38	50	65	61	51	55	47	62	45	64	41	36	42	657	
		CWS	0	0	0	0	0	0	0	0	0	0	0	0	0	0	0
		<b>Total</b>	<b>38</b>	<b>50</b>	<b>65</b>	<b>61</b>	<b>51</b>	<b>55</b>	<b>47</b>	<b>62</b>	<b>45</b>	<b>64</b>	<b>41</b>	<b>36</b>	<b>42</b>	<b>657</b>	
Northern Region IAIU		CPS	34	63	71	70	64	58	74	83	57	89	64	53	37	817	
		CWS	0	0	0	0	0	0	0	0	0	0	0	0	0	0	0
		<b>Total</b>	<b>34</b>	<b>63</b>	<b>71</b>	<b>70</b>	<b>64</b>	<b>58</b>	<b>74</b>	<b>83</b>	<b>57</b>	<b>89</b>	<b>64</b>	<b>53</b>	<b>37</b>	<b>817</b>	
Southern Region IAIU		CPS	76	67	100	58	71	92	70	85	90	90	69	66	57	991	
		CWS	0	0	0	0	0	0	0	0	0	0	0	0	0	0	0
		<b>Total</b>	<b>76</b>	<b>67</b>	<b>100</b>	<b>58</b>	<b>71</b>	<b>92</b>	<b>70</b>	<b>85</b>	<b>90</b>	<b>90</b>	<b>69</b>	<b>66</b>	<b>57</b>	<b>991</b>	
<b>IAIU CPS Subtotal</b>		<b>CPS</b>	<b>205</b>	<b>219</b>	<b>303</b>	<b>252</b>	<b>233</b>	<b>266</b>	<b>238</b>	<b>291</b>	<b>258</b>	<b>325</b>	<b>231</b>	<b>213</b>	<b>177</b>	<b>3,211</b>	
<b>IAIU CWS Subtotal</b>		<b>CWS</b>	<b>0</b>	<b>0</b>	<b>0</b>	<b>0</b>	<b>0</b>	<b>0</b>	<b>0</b>	<b>0</b>	<b>0</b>	<b>0</b>	<b>0</b>	<b>0</b>	<b>0</b>	<b>0</b>	
<b>IAIU Subtotal</b>		<b>Total</b>	<b>205</b>	<b>219</b>	<b>303</b>	<b>252</b>	<b>233</b>	<b>266</b>	<b>238</b>	<b>291</b>	<b>258</b>	<b>325</b>	<b>231</b>	<b>213</b>	<b>177</b>	<b>3,211</b>	
<b>County and IAIU CPS Subtotal</b>		<b>CPS</b>	<b>4,030</b>	<b>4,680</b>	<b>5,721</b>	<b>4,905</b>	<b>4,820</b>	<b>5,357</b>	<b>4,740</b>	<b>5,593</b>	<b>5,223</b>	<b>5,770</b>	<b>4,781</b>	<b>4,202</b>	<b>4,002</b>	<b>63,824</b>	
<b>County and IAIU CWS Subtotal</b>		<b>CWS</b>	<b>1,355</b>	<b>1,578</b>	<b>1,942</b>	<b>1,570</b>	<b>1,473</b>	<b>1,792</b>	<b>1,580</b>	<b>1,756</b>	<b>1,585</b>	<b>1,734</b>	<b>1,455</b>	<b>1,245</b>	<b>1,234</b>	<b>20,299</b>	
<b>Unable to Determine<sup>(1)</sup></b>		<b>Total</b>	<b>122</b>	<b>123</b>	<b>135</b>	<b>117</b>	<b>121</b>	<b>149</b>	<b>119</b>	<b>151</b>	<b>132</b>	<b>127</b>	<b>147</b>	<b>138</b>	<b>138</b>	<b>1,719</b>	
<b>Other Offices</b>		<b>Total</b>	<b>3</b>	<b>1</b>	<b>3</b>	<b>1</b>	<b>4</b>	<b>3</b>	<b>0</b>	<b>1</b>	<b>3</b>	<b>0</b>	<b>1</b>	<b>0</b>	<b>23</b>	<b>23</b>	
<b>Grand Total</b>		<b>Total</b>	<b>5,510</b>	<b>6,382</b>	<b>7,801</b>	<b>6,593</b>	<b>6,418</b>	<b>7,301</b>	<b>6,439</b>	<b>7,501</b>	<b>6,943</b>	<b>7,634</b>	<b>6,383</b>	<b>5,586</b>	<b>5,374</b>	<b>85,865</b>	

<sup>(1)</sup>CPS Reports or CWS Referrals not assigned to an office through the Assignment Designee, but were assigned to an office for an assessment or investigation.