



Child Protection and Permanency

Monthly Screening and Investigation Report August 2021

Christine Norbut Beyer, MSW
Commissioner



Table of Contents

Table 1: NJ State Central Registry Activity: Monthly Child Abuse and Neglect Hotline Calls, Intakes and Assignments to Child Protection & Permanency (CP&P) Offices

Chart 1: CP&P Annual Trends in Child Protection Services (CPS) Reports and Child Welfare Services (CWS) Referrals

Table 2: Assignments to CP&P Offices: CPS Reports and CWS Referrals

Table 3: Source of CPS Reports and CWS Referrals

Table 4: Monthly Count of CPS Reports and CWS Referrals Assigned to Counties

Table 5: Monthly Count of CPS Reports and CWS Referrals Assigned to CP&P Local Offices

Table 1: NJ State Central Registry Activity: Monthly Child Abuse and Neglect Hotline Calls, Intakes and Assignments to CP&P Offices^{1,2,7}

2020-2021	Hotline Call Activity				Intakes Recorded in NJ SPIRIT ^{6,8}														Assignments to CP&P Offices				
	Total Calls to SCR ³	Abandon Calls ⁴	Average Time to Answer (seconds)	Resulting NJS Intakes ⁵	CPS Reports		CWS Referrals		No Action Required (NAR)		Related Information (RI)		Information & Referral (I&R)		Information Only (IO)		Unusual Incident (UIRS)		CPS Reports		CWS Referrals		Total
					n	%	n	%	n	%	n	%	n	%	n	%	n	%	n	%	n	%	
August 2020	11,248	1,493	232	11,204	3,569	31.9%	821	7.3%	164	1.5%	2,993	26.7%	1,649	14.7%	2,008	17.9%	0	0.0%	3,569	81.3%	822	18.7%	4,391
September 2020	12,277	1,495	203	12,505	4,153	33.2%	1,031	8.2%	246	2.0%	3,097	24.8%	2,046	16.4%	1,932	15.4%	0	0.0%	4,153	80.1%	1,030	19.9%	5,183
October 2020	13,118	1,258	183	13,320	4,257	32.0%	867	6.5%	191	1.4%	3,220	24.2%	2,709	20.3%	2,076	15.6%	0	0.0%	4,257	83.1%	868	16.9%	5,125
November 2020	10,789	1,462	183	10,930	3,564	32.6%	670	6.1%	141	1.3%	2,608	23.9%	2,159	19.8%	1,788	16.4%	0	0.0%	3,564	84.2%	670	15.8%	4,234
December 2020	9,618	1,385	238	10,567	3,517	33.3%	681	6.4%	149	1.4%	2,345	22.2%	2,123	20.1%	1,752	16.6%	0	0.0%	3,517	83.8%	681	16.2%	4,198
January 2021	11,339	1,452	199	12,032	4,018	33.4%	794	6.6%	190	1.6%	2,818	23.4%	2,324	19.3%	1,888	15.7%	0	0.0%	4,018	83.5%	794	16.5%	4,812
February 2021	11,060	966	186	11,302	3,767	33.3%	655	5.8%	167	1.5%	2,499	22.1%	2,394	21.2%	1,820	16.1%	0	0.0%	3,767	85.2%	655	14.8%	4,422
March 2021	12,731	666	75	13,372	4,657	34.8%	829	6.2%	261	2.0%	2,868	21.4%	2,796	20.9%	1,961	14.7%	0	0.0%	4,657	84.9%	830	15.1%	5,487
April 2021	11,772	680	94	12,287	4,398	35.8%	750	6.1%	187	1.5%	2,796	22.8%	2,287	18.6%	1,869	15.2%	0	0.0%	4,398	85.4%	750	14.6%	5,148
May 2021	12,496	686	87	13,132	4,870	37.1%	734	5.6%	219	1.7%	3,025	23.0%	2,523	19.2%	1,761	13.4%	0	0.0%	4,870	86.9%	736	13.1%	5,606
June 2021	11,893	895	117	12,269	4,412	36.0%	591	4.8%	188	1.5%	2,943	24.0%	2,430	19.8%	1,705	13.9%	0	0.0%	4,412	88.2%	592	11.8%	5,004
July 2021	10,578	638	127	10,996	3,914	35.6%	569	5.2%	142	1.3%	2,642	24.0%	2,079	18.9%	1,650	15.0%	0	0.0%	3,914	87.3%	570	12.7%	4,484
August 2021	10,365	508	78	10,897	3,866	35.5%	482	4.4%	172	1.6%	2,371	21.8%	2,301	21.1%	1,704	15.6%	1	0.0%	3,866	88.9%	482	11.1%	4,348
	11,483	1,045	154	11,909	4,074	34.2%	729	6.1%	186	1.6%	2,787	23.4%	2,294	19.3%	1,840	15.4%	0	0.0%	4,074	84.8%	729	15.2%	4,803
Overall Total	149,284	13,584		154,813	52,962		9,474		2,417		36,225		29,820		23,914		1		52,962	84.8%	9,480	15.2%	62,442

¹Comes from three distinct sources: (1) the Automatic Call Distribution (ACD) phone system; which keeps a count of the number of calls and call routing; (2) Monthly NJSpirit Intakes; which record decision making on calls received by hotline screeners, and (3) NJSpirit extracts of assigned CWS Referrals and CPS Reports.

²The number of Intakes, CPS Reports, and CWS Referrals are based on an extract from NJSpirit.

Data extracted by the Office of Research, Evaluation, and Reporting on **September 08, 2021** includes all Intakes, CPS Reports, and CWS Referrals received from **August 01, 2021** through **August 31, 2021**.

³The number calls received through the ACD System that were directed to a screener from any call-in phone number.

⁴The number of calls received through the ACD System that are abandoned either while waiting in queue or while ringing.

⁵The number of Intakes entered in NJSpirit from the number of calls received.

⁶The number of Intakes recorded in NJSpirit, by type of Intake. There is not a one-to-one relationship between an ACD call and an Intake; multiple calls to State Central Registry (SCR) may result in a single Intake, or one call may result in multiple Intakes.

⁷Intake: The process of documenting: a report of alleged abuse or neglect of a child (CPS); a request for services on behalf of a child, or a referral of a child for services (CWS); a call in which the caller provides additional or clarifying information about a current service case or active investigation (RI); informing a caller of, or referring a caller to, services available from other private or public sources (I&R); a call that requires no action by CP&P (NAR); or a response to a simple inquiry (IO).

CP&P Annual Trends in CPS Reports and CWS Referrals

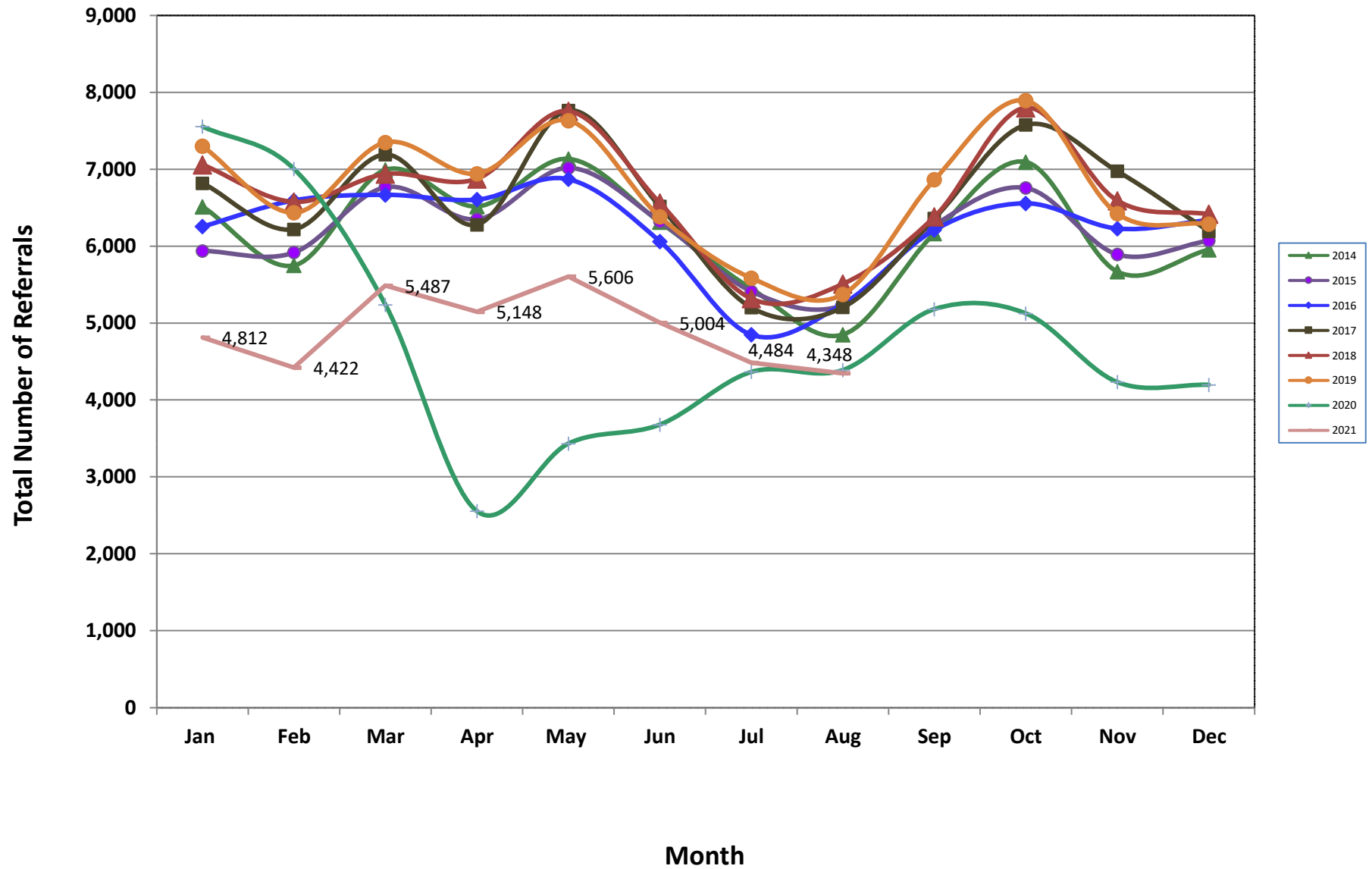


Table 2: Assignments to CP&P Offices: CPS Reports and CWS Referrals¹

Intake Date ³		CPS Reports ²	CWS Referrals ²	Total Assignments ²
2016	Jan 2016	4,686	1,571	6,257
	Feb 2016	4,974	1,622	6,596
	Mar 2016	5,000	1,669	6,669
	Apr 2016	5,065	1,542	6,607
	May 2016	5,238	1,633	6,871
	Jun 2016	4,602	1,461	6,063
	Jul 2016	3,663	1,187	4,850
	Aug 2016	3,941	1,307	5,248
	Sep 2016	4,654	1,559	6,213
	Oct 2016	4,935	1,622	6,557
	Nov 2016	4,677	1,552	6,229
	Dec 2016	4,762	1,580	6,342
	Total	56,197	18,305	74,502
2017	Jan 2017	5,111	1,708	6,819
	Feb 2017	4,716	1,504	6,220
	Mar 2017	5,349	1,843	7,192
	Apr 2017	4,790	1,490	6,280
	May 2017	5,847	1,919	7,766
	Jun 2017	4,853	1,665	6,518
	Jul 2017	3,814	1,389	5,203
	Aug 2017	3,866	1,340	5,206
	Sep 2017	4,719	1,643	6,362
	Oct 2017	5,613	1,966	7,579
	Nov 2017	5,223	1,753	6,976
	Dec 2017	4,601	1,594	6,195
	Total	58,502	19,814	78,316
2018	Jan 2018	5,276	1,784	7,060
	Feb 2018	4,933	1,644	6,577
	Mar 2018	5,212	1,727	6,939
	Apr 2018	5,275	1,601	6,876
	May 2018	5,920	1,836	7,756
	Jun 2018	4,948	1,615	6,563
	Jul 2018	4,011	1,308	5,319
	Aug 2018	4,102	1,408	5,510
	Sep 2018	4,748	1,634	6,382
	Oct 2018	5,790	2,011	7,801
	Nov 2018	4,973	1,620	6,593
	Dec 2018	4,891	1,527	6,418
	Total	60,079	19,715	79,794

Table 2: Assignments to CP&P Offices: CPS Reports and CWS Referrals¹

Intake Date ³		CPS Reports ²	CWS Referrals ²	Total Assignments ²
2019	Jan 2019	5,443	1,858	7,301
	Feb 2019	4,811	1,628	6,439
	Mar 2019	5,677	1,824	7,501
	Apr 2019	5,313	1,630	6,943
	May 2019	5,853	1,781	7,634
	Jun 2019	4,874	1,509	6,383
	Jul 2019	4,277	1,309	5,586
	Aug 2019	4,068	1,306	5,374
	Sep 2019	5,315	1,551	6,866
	Oct 2019	5,968	1,926	7,894
	Nov 2019	4,991	1,432	6,423
	Dec 2019	4,855	1,434	6,289
	Total	61,445	19,188	80,633
2020	Jan 2020	5,715	1,842	7,557
	Feb 2020	5,380	1,624	7,004
	Mar 2020	4,172	1,065	5,237
	Apr 2020	2,149	407	2,556
	May 2020	2,897	537	3,434
	Jun 2020	3,045	636	3,681
	Jul 2020	3,628	738	4,366
	Aug 2020	3,569	822	4,391
	Sep 2020	4,153	1,030	5,183
	Oct 2020	4,257	868	5,125
	Nov 2020	3,564	670	4,234
	Dec 2020	3,517	681	4,198
	Total	46,046	10,920	56,966
2021	Jan 2021	4,018	794	4,812
	Feb 2021	3,767	655	4,422
	Mar 2021	4,657	830	5,487
	Apr 2021	4,398	750	5,148
	May 2021	4,870	736	5,606
	Jun 2021	4,412	592	5,004
	Jul 2021	3,914	570	4,484
	Aug 2021	3,866	482	4,348
	Total	33,902	5,409	39,311
Grand Total		316,171	93,351	409,522

Table 3: Source of CPS Reports and CWS Referrals

CPS Reports and CWS Referrals	Source	Aug 2020	Sep 2020	Oct 2020	Nov 2020	Dec 2020	Jan 2021	Feb 2021	Mar 2021	Apr 2021	May 2021	Jun 2021	Jul 2021	Aug 2021		13 Month Total	
	School Staff	63	565	809	515	523	709	664	989	759	913	531	145	83	2%	7,268	12%
	Healthcare Provider	819	882	869	817	760	835	815	930	897	917	819	839	789	18%	10,988	18%
	Law Enforcement	1,372	1,400	1,303	1,147	1,092	1,226	1,122	1,311	1,329	1,542	1,466	1,442	1,384	32%	17,136	27%
	Government Agency	304	295	278	180	233	280	261	323	309	272	221	248	265	6%	3,469	6%
	Parent	395	431	351	330	355	374	302	392	409	387	396	392	404	9%	4,918	8%
	Relative/Friend/Neighbor	343	424	337	294	286	336	284	332	338	355	382	362	363	8%	4,436	7%
	Anonymous	425	502	525	386	400	442	415	499	450	487	476	387	401	9%	5,795	9%
	CP&P	104	95	98	72	82	62	61	96	89	89	76	58	45	1%	1,027	2%
	Court/Legal	81	99	86	77	81	99	91	127	102	111	119	125	88	2%	1,286	2%
	Community Group/Individual	171	177	163	141	132	168	152	182	159	175	176	149	159	4%	2,104	3%
	Facility Staff (incl Correctional Facility)	61	72	68	53	60	56	48	52	64	67	66	65	69	2%	801	1%
	Child (Self)	29	31	29	34	31	29	27	35	37	33	22	26	49	1%	412	1%
	Other	219	204	198	177	150	187	171	204	197	245	245	226	236	5%	2,659	4%
Daycare/Babysitter	5	6	11	11	13	9	9	15	9	13	9	20	13	0%	143	0%	
Total	4,391	5,183	5,125	4,234	4,198	4,812	4,422	5,487	5,148	5,606	5,004	4,484	4,348		62,442		

Table 4: Monthly Count of CPS Reports and CWS Referrals Assigned to Counties

County														Average Number of Assignments Last 13 Months	Jul 21 to Aug 21 Numerical Difference
	Aug 2020	Sep 2020	Oct 2020	Nov 2020	Dec 2020	Jan 2021	Feb 2021	Mar 2021	Apr 2021	May 2021	Jun 2021	Jul 2021	Aug 2021		
Atlantic	195	243	256	181	199	205	185	237	224	265	241	197	182	216	-15
Bergen	233	300	319	255	245	276	289	323	314	343	273	255	249	283	-6
Burlington	237	271	278	224	224	230	232	297	269	307	286	238	223	255	-15
Camden	345	433	443	337	356	420	432	497	459	456	403	381	371	410	-10
Cape May	65	87	61	72	61	70	73	87	68	81	56	81	72	72	-9
Cumberland	131	165	167	147	147	141	154	203	190	173	165	153	140	160	-13
Essex	486	538	500	419	416	458	452	530	441	520	501	457	442	474	-15
Gloucester	192	232	214	186	202	197	176	239	237	219	228	205	207	210	2
Hudson	268	274	325	234	296	301	243	305	313	341	319	255	287	289	32
Hunterdon	40	42	38	36	29	46	42	41	47	47	34	37	33	39	-4
Mercer	187	234	207	193	194	201	184	221	213	264	230	200	185	209	-15
Middlesex	321	344	356	286	303	356	295	382	364	428	349	299	317	338	18
Monmouth	267	302	311	254	237	304	289	304	294	296	262	249	256	279	7
Morris	150	202	198	164	148	182	139	198	168	162	190	141	137	168	-4
Ocean	278	349	319	294	290	321	291	394	389	396	360	290	310	329	20
Passaic	250	321	312	255	225	328	243	310	326	346	291	285	245	287	-40
Salem	48	56	68	67	53	71	64	83	76	76	64	61	48	64	-13
Somerset	101	155	130	123	106	114	120	130	139	153	130	108	97	124	-11
Sussex	73	92	101	74	46	63	73	103	95	78	70	62	67	77	5
Union	225	261	253	189	210	256	218	271	260	321	266	240	226	246	-14
Warren	77	86	98	67	66	93	70	102	73	104	86	87	55	82	-32
County Subtotals	4,169	4,987	4,954	4,057	4,053	4,633	4,264	5,257	4,959	5,376	4,804	4,281	4,149	4,611	-132
Central Region IAIU	17	26	23	23	13	28	20	30	20	41	22	35	25	25	-10
Metro Region IAIU	13	8	14	16	11	12	11	22	14	18	17	11	22	15	11
Northern Region IAIU	12	11	10	11	8	18	14	23	20	28	18	23	19	17	-4
Southern Region IAIU	30	25	28	23	26	33	34	46	35	48	33	42	42	34	0
IAIU Subtotals	72	70	75	73	58	91	79	121	89	135	90	111	108	90	-3
¹ Unable to Determine	149	126	93	103	85	85	79	108	98	94	108	89	91	101	2
Other Offices	1	0	3	1	2	3	0	1	2	1	2	3	0	1	-3
Grand Total	4,391	5,183	5,125	4,234	4,198	4,812	4,422	5,487	5,148	5,606	5,004	4,484	4,348	4,803	-136

¹CPS Reports or CWS Referrals not assigned to an office through the Assignment Designee, but were assigned to an office for an assessment or investigation.



Table 5: Monthly Count of CPS Reports and CWS Referrals Assigned to CP&P Local Offices

County	Local Office	Type of Referral														Total
			Aug 2020	Sep 2020	Oct 2020	Nov 2020	Dec 2020	Jan 2021	Feb 2021	Mar 2021	Apr 2021	May 2021	Jun 2021	Jul 2021	Aug 2021	
ATLANTIC	Atlantic East	CPS	100	109	110	76	87	95	98	105	105	128	130	95	97	1,335
		CWS	22	32	17	13	16	17	14	15	21	22	14	12	17	
		Total	122	141	127	89	103	112	112	120	126	150	144	107	114	
	Atlantic West	CPS	64	88	107	79	82	76	63	100	87	94	83	83	60	1,066
		CWS	9	14	22	13	14	17	10	17	11	21	14	7	8	
		Total	73	102	129	92	96	93	73	117	98	115	97	90	68	
	County Totals	CPS	164	197	217	155	169	171	161	205	192	222	213	178	157	2,401
		CWS	31	46	39	26	30	34	24	32	32	43	28	19	25	
		Total	195	243	256	181	199	205	185	237	224	265	241	197	182	
BERGEN	Bergen Central	CPS	85	89	105	70	80	101	96	123	111	122	89	85	85	1,241
		CWS	12	31	33	19	15	23	25	18	17	12	15	10	6	
		Total	97	120	138	89	95	124	121	141	128	134	104	95	91	
	Bergen South	CPS	118	144	156	138	119	127	140	157	161	191	157	139	147	1,894
		CWS	18	36	25	28	31	25	28	25	25	18	12	21	11	
		Total	136	180	181	166	150	152	168	182	186	209	169	160	158	
	County Totals	CPS	203	233	261	208	199	228	236	280	272	313	246	224	232	3,135
		CWS	30	67	58	47	46	48	53	43	42	30	27	31	17	
		Total	233	300	319	255	245	276	289	323	314	343	273	255	249	
BURLINGTON	Burlington East	CPS	101	100	126	95	104	92	111	133	121	128	129	91	91	1,422
		CWS	17	30	19	16	13	21	19	18	27	21	21	20	10	
		Total	118	130	145	111	117	113	130	151	148	149	150	111	101	
	Burlington West	CPS	95	117	108	93	87	89	87	122	98	135	117	105	100	1,353
		CWS	24	24	25	20	20	28	15	24	23	23	19	22	22	
		Total	119	141	133	113	107	117	102	146	121	158	136	127	122	
	County Totals	CPS	196	217	234	188	191	181	198	255	219	263	246	196	191	2,775
		CWS	41	54	44	36	33	49	34	42	50	44	40	42	32	
		Total	237	271	278	224	224	230	232	297	269	307	286	238	223	
CAMDEN	Camden Central	CPS	69	87	99	79	79	100	85	115	91	105	88	86	88	1,171
		CWS	18	20	18	14	17	20	17	22	12	17	13	12	16	
		Total	87	107	117	93	96	120	102	137	103	122	101	98	104	
	Camden East	CPS	78	98	101	64	79	93	88	118	112	104	84	81	84	1,184
		CWS	15	19	13	13	15	13	20	16	18	10	13	13	16	
		Total	93	117	114	77	94	106	108	134	130	114	97	94	100	
	Camden North	CPS	63	85	86	62	59	81	107	85	93	97	92	79	67	1,056
		CWS	18	20	19	19	12	17	15	13	15	17	11	9	13	
		Total	81	105	105	81	71	98	122	98	108	114	103	88	80	
	Camden South	CPS	67	84	96	75	78	77	93	108	102	91	92	88	75	1,126
		CWS	17	20	11	11	17	19	7	20	16	15	10	13	12	
		Total	84	104	107	86	95	96	100	128	118	106	102	101	87	
	County Totals	CPS	277	354	382	280	295	351	373	426	398	397	356	334	314	4,537
		CWS	68	79	61	57	61	69	59	71	61	59	47	47	57	
		Total	345	433	443	337	356	420	432	497	459	456	403	381	371	
CAPE MAY	Cape May	CPS	52	75	52	60	52	59	59	77	60	70	51	63	64	794
		CWS	13	12	9	12	9	11	14	10	8	11	5	18	8	
		Total	65	87	61	72	61	70	73	87	68	81	56	81	72	
	County Totals	CPS	52	75	52	60	52	59	59	77	60	70	51	63	64	794
		Total	65	87	61	72	61	70	73	87	68	81	56	81	72	
CUMBERLAND	Cumberland East	CPS	43	49	61	46	41	45	41	75	55	54	66	68	58	702
		CWS	6	6	12	8	5	17	7	11	11	11	11	4	4	
		Total	49	55	73	54	46	62	48	86	66	65	77	72	62	
	Cumberland West	CPS	70	89	77	76	78	68	91	101	110	91	74	73	71	1,069
		CWS	12	21	17	17	23	11	15	16	14	17	14	8	7	
		Total	82	110	94	93	101	79	106	117	124	108	88	81	78	
	County Totals	CPS	113	138	138	122	119	113	132	176	165	145	140	141	129	1,771
		CWS	18	27	29	25	28	28	22	27	25	28	25	12	11	
		Total	131	165	167	147	147	141	154	203	190	173	165	153	140	

Data in this report is preliminary and may differ from any final report. This report is produced to ensure continuous quality improvement throughout DCF.



Table 5: Monthly Count of CPS Reports and CWS Referrals Assigned to CP&P Local Offices

County	Local Office	Type of Referral														Total
			Aug 2020	Sep 2020	Oct 2020	Nov 2020	Dec 2020	Jan 2021	Feb 2021	Mar 2021	Apr 2021	May 2021	Jun 2021	Jul 2021	Aug 2021	
ESSEX	Essex Central	CPS	67	69	76	59	66	81	80	68	63	62	63	77	59	890
		CWS	17	17	15	14	10	24	13	11	14	9	9	15	12	180
		Total	84	86	91	73	76	105	93	79	77	71	72	92	71	1,070
	Essex North	CPS	42	45	50	48	44	38	58	81	66	79	71	68	49	739
		CWS	9	21	16	3	13	8	12	20	15	15	7	7	1	147
		Total	51	66	66	51	57	46	70	101	81	94	78	75	50	886
	Essex South	CPS	54	53	48	42	38	57	71	70	64	81	86	61	74	799
		CWS	16	14	12	8	10	14	13	23	13	12	13	9	9	166
		Total	70	67	60	50	48	71	84	93	77	93	99	70	83	965
	Newark Center City	CPS	69	99	76	75	73	61	70	63	77	74	67	67	64	935
		CWS	12	18	10	12	8	10	5	15	9	5	14	3	11	132
		Total	81	117	86	87	81	71	75	78	86	79	81	70	75	1067
	Newark Northeast	CPS	62	72	72	47	50	62	54	66	54	83	70	61	61	814
		CWS	17	17	22	13	14	13	9	13	11	10	11	18	7	175
		Total	79	89	94	60	64	75	63	79	65	93	81	79	68	989
Newark South	CPS	93	91	84	83	76	74	56	82	45	83	86	58	81	992	
	CWS	28	22	19	15	14	16	11	18	10	7	4	13	14	191	
	Total	121	113	103	98	90	90	67	100	55	90	90	71	95	1183	
County Totals	CPS	387	429	406	354	347	373	389	430	369	462	443	392	388	5169	
	CWS	99	109	94	65	69	85	63	100	72	58	58	65	54	991	
	Total	486	538	500	419	416	458	452	530	441	520	501	457	442	6160	
GLOUCESTER	Gloucester East	CPS	75	83	73	79	83	65	62	93	91	94	85	85	76	1044
		CWS	15	14	14	11	6	18	13	19	17	16	13	15	8	179
		Total	90	97	87	90	89	83	75	112	108	110	98	100	84	1223
	Gloucester West	CPS	88	112	108	82	95	98	89	116	114	96	109	90	113	1310
		CWS	14	23	19	14	18	16	12	11	15	13	21	15	10	201
		Total	102	135	127	96	113	114	101	127	129	109	130	105	123	1511
	County Totals	CPS	163	195	181	161	178	163	151	209	205	190	194	175	189	2354
		CWS	29	37	33	25	24	34	25	30	32	29	34	30	18	380
		Total	192	232	214	186	202	197	176	239	237	219	228	205	207	2734
HUDSON	Hudson Central	CPS	74	75	90	71	98	84	68	98	78	96	78	63	104	1077
		CWS	19	21	32	15	18	25	6	32	16	16	20	11	8	239
		Total	93	96	122	86	116	109	74	130	94	112	98	74	112	1316
	Hudson North	CPS	46	53	45	45	47	58	55	55	59	72	57	60	60	712
		CWS	15	16	14	9	10	13	15	11	14	14	7	11	12	161
		Total	61	69	59	54	57	71	70	66	73	86	64	71	72	873
	Hudson South	CPS	40	31	48	21	29	35	25	34	50	50	74	37	41	515
		CWS	7	7	6	12	8	10	7	9	14	12	8	7	3	110
		Total	47	38	54	33	37	45	32	43	64	62	82	44	44	625
	Hudson West	CPS	55	58	65	53	69	65	55	58	69	68	65	61	52	793
		CWS	12	13	25	8	17	11	12	8	13	13	10	5	7	154
		Total	67	71	90	61	86	76	67	66	82	81	75	66	59	947
	County Totals	CPS	215	217	248	190	243	242	203	245	256	286	274	221	257	3097
		CWS	53	57	77	44	53	59	40	60	57	55	45	34	30	664
		Total	268	274	325	234	296	301	243	305	313	341	319	255	287	3761
HUNTERDON	Hunterdon	CPS	34	31	31	28	23	38	38	34	38	38	29	35	32	429
		CWS	6	11	7	8	6	8	4	7	9	9	5	2	1	83
		Total	40	42	38	36	29	46	42	41	47	47	34	37	33	512
	County Totals	CPS	34	31	31	28	23	38	38	34	38	38	29	35	32	429
		CWS	6	11	7	8	6	8	4	7	9	9	5	2	1	83
Total	40	42	38	36	29	46	42	41	47	47	47	34	37	33	512	
MERCER	Mercer North	CPS	78	101	78	83	86	91	81	93	108	128	113	92	90	1222
		CWS	15	17	20	21	16	13	11	9	8	11	17	20	12	190
		Total	93	118	98	104	102	104	92	102	116	139	130	112	102	1412
	Mercer South	CPS	78	92	94	75	74	71	72	99	81	109	88	74	76	1083
		CWS	16	24	15	14	18	26	20	20	16	16	12	14	7	218
		Total	94	116	109	89	92	97	92	119	97	125	100	88	83	1301
	County Totals	CPS	156	193	172	158	160	162	153	192	189	237	201	166	166	2305
		CWS	31	41	35	35	34	39	31	29	24	27	29	34	19	408
Total	187	234	207	193	194	201	184	221	213	264	230	200	185	2713		

Data in this report is preliminary and may differ from any final report. This report is produced to ensure continuous quality improvement throughout DCF.



Table 5: Monthly Count of CPS Reports and CWS Referrals Assigned to CP&P Local Offices

County	Local Office	Type of Referral														Total
			Aug 2020	Sep 2020	Oct 2020	Nov 2020	Dec 2020	Jan 2021	Feb 2021	Mar 2021	Apr 2021	May 2021	Jun 2021	Jul 2021	Aug 2021	
MIDDLESEX	Middlesex Central	CPS	66	73	87	65	71	104	73	98	110	99	103	81	71	1101
		CWS	12	19	18	11	19	14	17	13	20	11	15	10	7	186
		Total	78	92	105	76	90	118	90	111	130	110	118	91	78	1287
	Middlesex Coastal	CPS	116	105	120	91	89	95	84	121	96	131	102	93	109	1352
		CWS	20	16	15	13	11	18	13	21	16	20	11	9	14	197
		Total	136	121	135	104	100	113	97	142	112	151	113	102	123	1549
	Middlesex West	CPS	88	102	96	90	93	106	91	107	104	142	104	95	106	1324
		CWS	19	29	20	16	20	19	17	22	18	25	14	11	10	240
		Total	107	131	116	106	113	125	108	129	122	167	118	106	116	1564
	County Totals	CPS	270	280	303	246	253	305	248	326	310	372	309	269	286	3777
CWS		51	64	53	40	50	51	47	56	54	56	40	30	31	623	
Total		321	344	356	286	303	356	295	382	364	428	349	299	317	4400	
MONMOUTH	Monmouth North	CPS	118	128	149	127	102	139	149	154	135	146	124	121	125	1717
		CWS	27	33	23	15	20	24	21	22	15	20	11	10	16	257
		Total	145	161	172	142	122	163	170	176	150	166	135	131	141	1974
	Monmouth South	CPS	100	118	116	91	94	124	102	114	131	120	116	107	109	1442
		CWS	22	23	23	21	21	17	17	14	13	10	11	11	6	209
		Total	122	141	139	112	115	141	119	128	144	130	127	118	115	1651
	County Totals	CPS	218	246	265	218	196	263	251	268	266	266	240	228	234	3159
		CWS	49	56	46	36	41	41	38	36	28	30	22	21	22	466
Total		267	302	311	254	237	304	289	304	294	296	262	249	256	3625	
MORRIS	Morris East	CPS	64	77	89	68	64	74	58	82	62	75	89	53	70	925
		CWS	12	24	9	8	10	8	9	14	14	11	7	7	4	137
		Total	76	101	98	76	74	82	67	96	76	86	96	60	74	1062
	Morris West	CPS	53	87	80	75	66	90	65	89	78	70	86	76	57	972
		CWS	21	14	20	13	8	10	7	13	14	6	8	5	6	145
		Total	74	101	100	88	74	100	72	102	92	76	94	81	63	1117
	County Totals	CPS	117	164	169	143	130	164	123	171	140	145	175	129	127	1897
		CWS	33	38	29	21	18	18	16	27	28	17	15	12	10	282
Total		150	202	198	164	148	182	139	198	168	162	190	141	137	2179	
OCEAN	Ocean North	CPS	121	147	150	126	129	166	139	167	171	182	173	142	148	1961
		CWS	20	36	22	20	32	17	20	34	31	19	20	18	17	306
		Total	141	183	172	146	161	183	159	201	202	201	193	160	165	2267
	Ocean South	CPS	112	132	130	124	110	119	109	176	161	176	148	110	136	1743
		CWS	25	34	17	24	19	19	23	17	26	19	19	20	9	271
		Total	137	166	147	148	129	138	132	193	187	195	167	130	145	2014
	County Totals	CPS	233	279	280	250	239	285	248	343	332	358	321	252	284	3704
		CWS	45	70	39	44	51	36	43	51	57	38	39	38	26	577
Total		278	349	319	294	290	321	291	394	389	396	360	290	310	4281	
PASSAIC	Passaic Central	CPS	86	124	134	118	92	134	102	134	135	158	115	132	90	1554
		CWS	22	30	28	12	13	33	21	26	15	26	12	9	11	258
		Total	108	154	162	130	105	167	123	160	150	184	127	141	101	1812
	Passaic North	CPS	108	137	123	107	104	134	102	124	150	142	153	126	130	1640
		CWS	34	30	27	18	16	27	18	26	26	20	11	18	14	285
		Total	142	167	150	125	120	161	120	150	176	162	164	144	144	1925
	County Totals	CPS	194	261	257	225	196	268	204	258	285	300	268	258	220	3194
		CWS	56	60	55	30	29	60	39	52	41	46	23	27	25	543
Total		250	321	312	255	225	328	243	310	326	346	291	285	245	3737	
SALEM	Salem	CPS	39	44	56	60	48	62	56	72	67	63	59	51	41	718
		CWS	9	12	12	7	5	9	8	11	9	13	5	10	7	117
		Total	48	56	68	67	53	71	64	83	76	76	64	61	48	835
	County Totals	CPS	39	44	56	60	48	62	56	72	67	63	59	51	41	718
		CWS	9	12	12	7	5	9	8	11	9	13	5	10	7	117
		Total	48	56	68	67	53	71	64	83	76	76	64	61	48	835
SOMERSET	Somerset	CPS	84	117	116	109	94	101	104	119	127	125	114	96	85	1391
		CWS	17	38	14	14	12	13	16	11	12	28	16	12	12	215
		Total	101	155	130	123	106	114	120	130	139	153	130	108	97	1606
	County Totals	CPS	84	117	116	109	94	101	104	119	127	125	114	96	85	1391
		Total	101	155	130	123	106	114	120	130	139	153	130	108	97	1606

Data in this report is preliminary and may differ from any final report. This report is produced to ensure continuous quality improvement throughout DCF.



Table 5: Monthly Count of CPS Reports and CWS Referrals Assigned to CP&P Local Offices

County	Local Office	Type of Referral														Total
			Aug 2020	Sep 2020	Oct 2020	Nov 2020	Dec 2020	Jan 2021	Feb 2021	Mar 2021	Apr 2021	May 2021	Jun 2021	Jul 2021	Aug 2021	
SUSSEX	Sussex	CPS	59	70	76	64	41	54	66	93	86	70	64	52	62	857
		CWS	14	22	25	10	5	9	7	10	9	8	6	10	5	140
		Total	73	92	101	74	46	63	73	103	95	78	70	62	67	997
	County Totals	CPS	59	70	76	64	41	54	66	93	86	70	64	52	62	857
		CWS	14	22	25	10	5	9	7	10	9	8	6	10	5	140
		Total	73	92	101	74	46	63	73	103	95	78	70	62	67	997
UNION	Union Central	CPS	56	66	72	48	67	63	57	68	67	88	70	74	65	861
		CWS	11	13	14	11	7	15	10	25	14	17	5	10	9	161
		Total	67	79	86	59	74	78	67	93	81	105	75	84	74	1022
	Union East	CPS	84	66	52	51	57	72	73	66	61	88	95	72	68	905
		CWS	16	16	19	10	10	19	5	15	15	18	9	2	8	162
		Total	100	82	71	61	67	91	78	81	76	106	104	74	76	1067
	Union West	CPS	52	75	80	58	58	69	65	79	80	101	79	70	70	936
		CWS	6	25	16	11	11	18	8	18	23	9	8	12	6	171
		Total	58	100	96	69	69	87	73	97	103	110	87	82	76	1107
	County Totals	CPS	192	207	204	157	182	204	195	213	208	277	244	216	203	2702
		CWS	33	54	49	32	28	52	23	58	52	44	22	24	23	494
		Total	225	261	253	189	210	256	218	271	260	321	266	240	226	3196
WARREN	Warren	CPS	66	70	85	59	57	84	57	83	64	87	77	78	51	918
		CWS	11	16	13	8	9	9	13	19	9	17	9	9	4	146
		Total	77	86	98	67	66	93	70	102	73	104	86	87	55	1064
	County Totals	CPS	66	70	85	59	57	84	57	83	64	87	77	78	51	918
		CWS	11	16	13	8	9	9	13	19	9	17	9	9	4	146
		Total	77	86	98	67	66	93	70	102	73	104	86	87	55	1064
County CPS Referral Total	CPS	3,432	4,017	4,133	3,435	3,412	3,871	3,645	4,475	4,248	4,686	4,264	3,754	3,712	51,084	
County CWS Referral Total	CWS	737	970	821	622	641	762	619	782	711	690	540	527	437	8,859	
County Referral Total	Total	4,169	4,987	4,954	4,057	4,053	4,633	4,264	5,257	4,959	5,376	4,804	4,281	4,149	59,943	
Central Region IAIU	CPS	17	26	23	23	13	28	20	30	20	41	22	35	25	323	
	CWS	0	0	0	0	0	0	0	0	0	0	0	0	0	0	
	Total	17	26	23	23	13	28	20	30	20	41	22	35	25	323	
Metro Region IAIU	CPS	13	8	14	16	11	12	11	22	14	18	17	11	22	189	
	CWS	0	0	0	0	0	0	0	0	0	0	0	0	0	0	
	Total	13	8	14	16	11	12	11	22	14	18	17	11	22	189	
Northern Region IAIU	CPS	12	11	10	11	8	18	14	22	20	28	18	23	19	214	
	CWS	0	0	0	0	0	0	0	1	0	0	0	0	0	1	
	Total	12	11	10	11	8	18	14	23	20	28	18	23	19	215	
Southern Region IAIU	CPS	30	25	28	23	26	33	34	46	35	48	33	42	42	445	
	CWS	0	0	0	0	0	0	0	0	0	0	0	0	0	0	
	Total	30	25	28	23	26	33	34	46	35	48	33	42	42	445	
IAIU CPS Subtotal	CPS	72	70	75	73	58	91	79	120	89	135	90	111	108	1,171	
IAIU CWS Subtotal	CWS	0	0	0	0	0	0	0	1	0	0	0	0	0	1	
IAIU Subtotal	Total	72	70	75	73	58	91	79	121	89	135	90	111	108	1,172	
County and IAIU CPS Subtotal	CPS	3,504	4,087	4,208	3,508	3,470	3,962	3,724	4,595	4,337	4,821	4,354	3,865	3,820	52,255	
County and IAIU CWS Subtotal	CWS	737	970	821	622	641	762	619	783	711	690	540	527	437	8,860	
Unable to Determine(1)	Total	149	126	93	103	85	85	79	108	98	94	108	89	91	1,308	
Other Offices	Total	1	0	3	1	2	3	0	1	2	1	2	3	0	19	
Grand Total	Total	4,391	5,183	5,125	4,234	4,198	4,812	4,422	5,487	5,148	5,606	5,004	4,484	4,348	62,442	

(1) CPS Reports or CWS Referrals not assigned to an office through the Assignment Designee, but were assigned to an office for an assessment or investigation.