



## **Child Protection and Permanency**

# **Monthly Screening and Investigation Report September 2018**

Christine Norbut Beyer, MSW  
Commissioner

October 9, 2018



## Table of Contents

Table 1: NJ State Central Registry Activity: Monthly Child Abuse and Neglect Hotline Calls, Intakes and Assignments to Child Protection & Permanency (CP&P) Offices

---

Chart 1: CP&P Annual Trends in Child Protection Services (CPS) Reports and Child Welfare Services (CWS) Referrals

---

Table 2: Assignments to CP&P Offices: CPS Reports and CWS Referrals

---

Table 3: Source of CPS Reports and CWS Referrals

---

Table 4: Monthly Count of CPS Reports and CWS Referrals Assigned to Counties

---

Table 5: Monthly Count of CPS Reports and CWS Referrals Assigned to CP&P Local Offices

---

**Table 1: NJ State Central Registry Activity: Monthly Child Abuse and Neglect Hotline Calls, Intakes and Assignments to CP&P Offices<sup>1,2,7</sup>**

2017 - 2018	Hotline Call Activity				Intakes Recorded in NJ SPIRIT <sup>6,8</sup>												Assignments to CP&P Offices				
	Total Calls to SCR <sup>3</sup>	Abandon Calls <sup>4</sup>	Average Time to Answer (seconds)	Resulting NJS Intakes <sup>5</sup>	CPS Reports		CWS Referrals		No Action Required (NAR)		Related Information (RI)		Information & Referral (I&R)		Information Only (IO)		CPS Reports		CWS Referrals		Total
					n	%	n	%	n	%	n	%	n	%	n	%	n	%	n	%	
September 2017	13,450	570	40	14,750	4,719	32.0%	1,642	11.1%	381	2.6%	3,951	26.8%	1,700	11.5%	2,357	16.0%	4,719	74.2%	1,643	25.8%	6,362
October 2017	15,474	657	45	16,828	5,613	33.4%	1,968	11.7%	305	1.8%	4,353	25.9%	1,883	11.2%	2,706	16.1%	5,613	74.1%	1,966	25.9%	7,579
November 2017	14,446	672	43	15,694	5,223	33.3%	1,750	11.2%	235	1.5%	4,246	27.1%	1,680	10.7%	2,560	16.3%	5,223	74.9%	1,753	25.1%	6,976
December 2017	13,005	560	38	14,194	4,601	32.4%	1,594	11.2%	220	1.5%	3,843	27.1%	1,724	12.1%	2,212	15.6%	4,601	74.3%	1,594	25.7%	6,195
January 2018	14,876	952	60	15,833	5,276	33.3%	1,784	11.3%	242	1.5%	4,346	27.4%	1,755	11.1%	2,430	15.3%	5,276	74.7%	1,784	25.3%	7,060
February 2018	13,558	727	54	14,638	4,933	33.7%	1,643	11.2%	251	1.7%	3,807	26.0%	1,740	11.9%	2,264	15.5%	4,933	75.0%	1,644	25.0%	6,577
March 2018	14,714	804	55	15,869	5,212	32.8%	1,727	10.9%	288	1.8%	4,187	26.4%	1,855	11.7%	2,600	16.4%	5,212	75.1%	1,727	24.9%	6,939
April 2018	14,148	727	54	15,227	5,275	34.6%	1,603	10.5%	252	1.7%	3,952	26.0%	1,818	11.9%	2,327	15.3%	5,275	76.7%	1,601	23.3%	6,876
May 2018	15,956	1,482	69	16,668	5,920	35.5%	1,833	11.0%	316	1.9%	4,104	24.6%	1,997	12.0%	2,498	15.0%	5,920	76.3%	1,836	23.7%	7,756
June 2018	13,796	1,021	72	14,490	4,948	34.1%	1,614	11.1%	264	1.8%	3,662	25.3%	1,693	11.7%	2,309	15.9%	4,948	75.4%	1,615	24.6%	6,563
July 2018	11,406	407	35	12,497	4,011	32.1%	1,307	10.5%	214	1.7%	3,387	27.1%	1,374	11.0%	2,204	17.6%	4,011	75.4%	1,308	24.6%	5,319
August 2018	11,633	460	43	12,708	4,102	32.3%	1,409	11.1%	252	2.0%	3,455	27.2%	1,307	10.3%	2,183	17.2%	4,102	74.4%	1,408	25.6%	5,510
<b>September 2018</b>	<b>13,554</b>	<b>925</b>	<b>64</b>	<b>14,277</b>	<b>4,748</b>	<b>33.3%</b>	<b>1,632</b>	<b>11.4%</b>	<b>217</b>	<b>1.5%</b>	<b>3,914</b>	<b>27.4%</b>	<b>1,448</b>	<b>10.1%</b>	<b>2,318</b>	<b>16.2%</b>	<b>4,748</b>	<b>74.4%</b>	<b>1,634</b>	<b>25.6%</b>	<b>6,382</b>
	<b>13,847</b>	<b>766</b>	<b>52</b>	<b>14,898</b>	<b>4,968</b>	<b>33.3%</b>	<b>1,654</b>	<b>11.1%</b>	<b>264</b>	<b>1.8%</b>	<b>3,939</b>	<b>26.4%</b>	<b>1,690</b>	<b>11.3%</b>	<b>2,382</b>	<b>16.0%</b>	<b>4,968</b>	<b>75.0%</b>	<b>1,655</b>	<b>25.0%</b>	<b>6,623</b>
<b>Overall Total</b>	<b>180,016</b>	<b>9,964</b>		<b>193,673</b>	<b>64,581</b>		<b>21,506</b>		<b>3,437</b>		<b>51,207</b>		<b>21,974</b>		<b>30,968</b>		<b>64,581</b>	<b>75.0%</b>	<b>21,513</b>	<b>25.0%</b>	<b>86,094</b>

<sup>1</sup>Comes from three distinct sources: (1) the Automatic Call Distribution (ACD) phone system; which keeps a count of the number of calls and call routing; (2) Monthly NJSpirit Intakes; which record decision making on calls received by hotline screeners, and (3) NJSpirit extracts of assigned CWS Referrals and CPS Reports.

<sup>2</sup>The number of Intakes, CPS Reports, and CWS Referrals are based on an extract from NJSpirit. Data extracted by the Office of Research, Evaluation, and Reporting on **October 9, 2018** includes all Intakes, CPS Reports, and CWS Referrals received from **September 1, 2018 through September 30, 2018**.

<sup>3</sup>The number calls received through the ACD System that were directed to a screener from any call-in phone number.

<sup>4</sup>The number of calls received through the ACD System that are abandoned either while waiting in queue or while ringing.

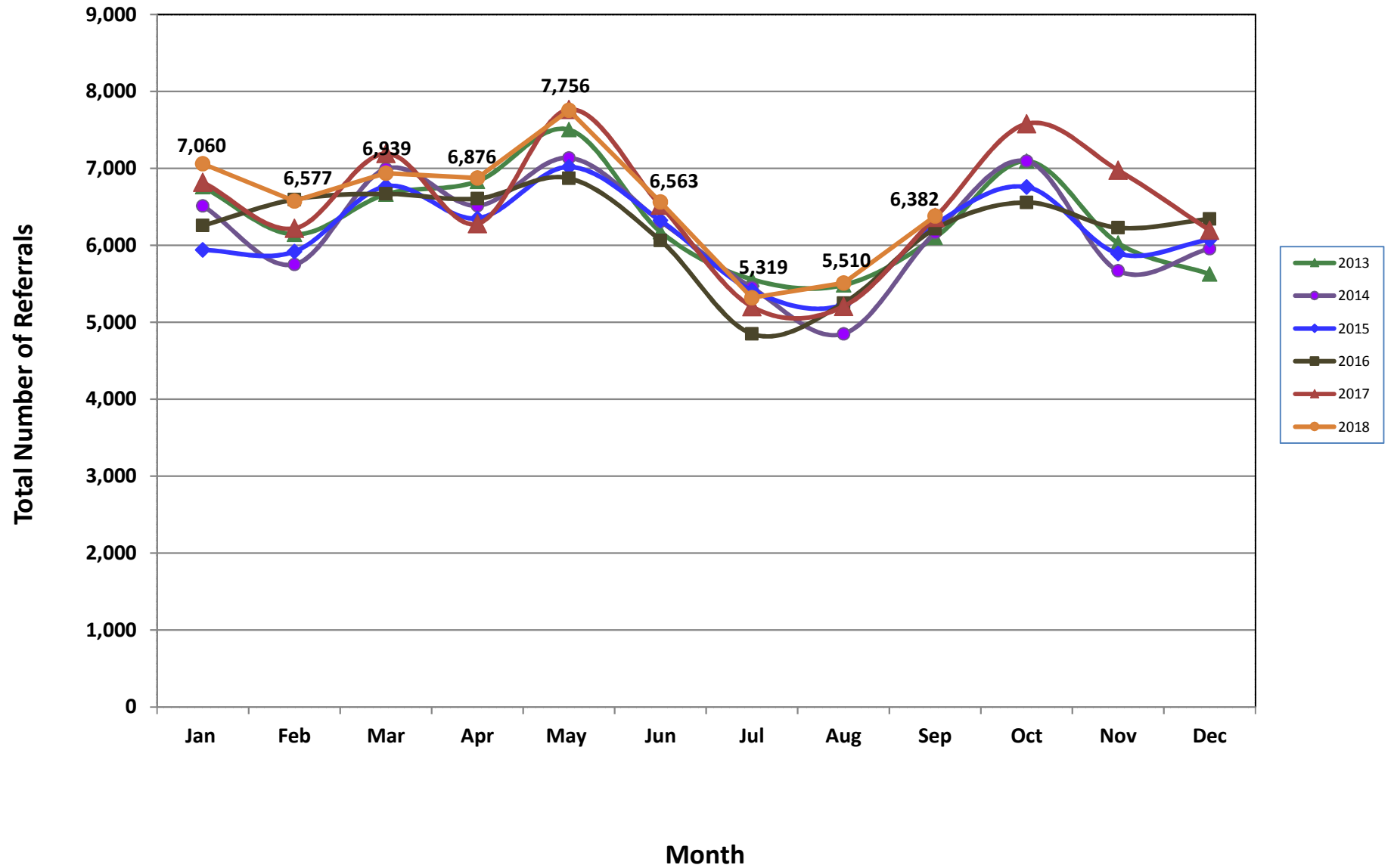
<sup>5</sup>The number of Intakes entered in NJSpirit from the number of calls received.

<sup>6</sup>The number of Intakes recorded in NJSpirit, by type of Intake. There is not a one-to-one relationship between an ACD call and an Intake; multiple calls to State Central Registry (SCR) may result in a single Intake, or one call may result in multiple Intakes.

<sup>7</sup>Intake: The process of documenting: a report of alleged abuse or neglect of a child (CPS); a request for services on behalf of a child, or a referral of a child for services (CWS); a call in which the caller provides additional or clarifying information about a current service case or active investigation (RI); informing a caller of, or referring a caller to, services available from other private or public sources (I&R); a call that requires no action by CP&P (NAR); or a response to a simple inquiry (IO).

<sup>8</sup>NJ SPIRIT: NJ Statewide Protection Investigation and Reporting Information Tool case management system

### CP&P Annual Trends in CPS Reports and CWS Referrals



**Table 2: Assignments to CP&P Offices: CPS Reports and CWS Referrals<sup>1</sup>**

Intake Date <sup>3</sup>		CPS Reports <sup>2</sup>	CWS Referrals <sup>2</sup>	Total Assignments <sup>2</sup>
2013	Jan 2013	5,464	1,296	6,760
	Feb 2013	4,966	1,177	6,143
	Mar 2013	5,355	1,309	6,664
	Apr 2013	5,430	1,402	6,832
	May 2013	5,993	1,510	7,503
	Jun 2013	4,947	1,230	6,177
	Jul 2013	4,330	1,228	5,558
	Aug 2013	4,330	1,155	5,485
	Sep 2013	4,851	1,251	6,102
	Oct 2013	5,614	1,481	7,095
	Nov 2013	4,694	1,334	6,028
	Dec 2013	4,397	1,229	5,626
	<b>Total</b>	<b>60,371</b>	<b>15,602</b>	<b>75,973</b>
2014	Jan 2014	5,097	1,416	6,513
	Feb 2014	4,457	1,295	5,752
	Mar 2014	5,408	1,586	6,994
	Apr 2014	5,049	1,467	6,516
	May 2014	5,501	1,635	7,136
	Jun 2014	4,796	1,517	6,313
	Jul 2014	4,202	1,247	5,449
	Aug 2014	3,629	1,222	4,851
	Sep 2014	4,668	1,498	6,166
	Oct 2014	5,509	1,586	7,095
	Nov 2014	4,254	1,416	5,670
	Dec 2014	4,509	1,447	5,956
	<b>Total</b>	<b>57,079</b>	<b>17,332</b>	<b>74,411</b>
2015	Jan 2015	4,549	1,391	5,940
	Feb 2015	4,574	1,345	5,919
	Mar 2015	5,187	1,580	6,767
	Apr 2015	4,967	1,384	6,351
	May 2015	5,457	1,561	7,018
	Jun 2015	4,887	1,436	6,323
	Jul 2015	4,140	1,273	5,413
	Aug 2015	3,978	1,256	5,234
	Sep 2015	4,776	1,495	6,271
	Oct 2015	5,139	1,619	6,758
	Nov 2015	4,417	1,477	5,894
	Dec 2015	4,530	1,544	6,074
	<b>Total</b>	<b>56,601</b>	<b>17,361</b>	<b>73,962</b>

**Table 2: Assignments to CP&P Offices: CPS Reports and CWS Referrals<sup>1</sup>**

	Intake Date <sup>3</sup>	CPS Reports <sup>2</sup>	CWS Referrals <sup>2</sup>	Total Assignments <sup>2</sup>
2016	Jan 2016	4,686	1,571	6,257
	Feb 2016	4,974	1,622	6,596
	Mar 2016	5,000	1,669	6,669
	Apr 2016	5,065	1,542	6,607
	May 2016	5,238	1,633	6,871
	Jun 2016	4,602	1,461	6,063
	Jul 2016	3,663	1,187	4,850
	Aug 2016	3,941	1,307	5,248
	Sep 2016	4,654	1,559	6,213
	Oct 2016	4,935	1,622	6,557
	Nov 2016	4,677	1,552	6,229
	Dec 2016	4,762	1,580	6,342
		<b>Total</b>	<b>56,197</b>	<b>18,305</b>
2017	Jan 2017	5,111	1,708	6,819
	Feb 2017	4,716	1,504	6,220
	Mar 2017	5,349	1,843	7,192
	Apr 2017	4,790	1,490	6,280
	May 2017	5,847	1,919	7,766
	Jun 2017	4,853	1,665	6,518
	Jul 2017	3,814	1,389	5,203
	Aug 2017	3,866	1,340	5,206
	Sep 2017	4,719	1,643	6,362
	Oct 2017	5,613	1,966	7,579
	Nov 2017	5,223	1,753	6,976
	Dec 2017	4,601	1,594	6,195
		<b>Total</b>	<b>58,502</b>	<b>19,814</b>
2018	Jan 2018	5,276	1,784	7,060
	Feb 2018	4,933	1,644	6,577
	Mar 2018	5,212	1,727	6,939
	Apr 2018	5,275	1,601	6,876
	May 2018	5,920	1,836	7,756
	Jun 2018	4,948	1,615	6,563
	Jul 2018	4,011	1,308	5,319
	Aug 2018	4,102	1,408	5,510
	Sep 2018	4,748	1,634	6,382
		<b>Total</b>	<b>44,425</b>	<b>14,557</b>
<b>Grand Total</b>		<b>333,175</b>	<b>102,971</b>	<b>436,146</b>

<sup>1</sup>Source of Data: NJ SPIRIT

<sup>2</sup>A CPS Report or a CWS Referral may include multiple children in a family, with one or more allegation or request for services. In these cases, each CPS Report or CWS Referral is counted once - the CPS Report or the CWS Referral is the unit of analysis rather than the child.

<sup>3</sup>Prior to January 2014, the number of CPS Reports and CWS Referrals was based on the type of assignment of the CPS Report or CWS Referral. Beginning in January 2014, the number of CPS Reports and CWS Referrals is based on the number of CPS Reports and CWS Referrals received.

**Table 3: Source of CPS Reports and CWS Referrals**

	Source	Sep 2017	Oct 2017	Nov 2017	Dec 2017	Jan 2018	Feb 2018	Mar 2018	Apr 2018	May 2018	Jun 2018	Jul 2018	Aug 2018	Sep 2018		13 Month Total	
CPS Reports and CWS Referrals	School Staff	1211	2030	1851	1622	1932	1970	1969	1783	2213	1243	184	118	1237	19%	19,363	22%
	Healthcare Provider	861	968	953	848	1003	809	931	932	994	885	904	920	928	15%	11,936	14%
	Law Enforcement	1180	1236	1130	988	1018	1001	1149	1179	1264	1220	1238	1201	1251	20%	15,055	17%
	Government Agency	442	475	399	408	392	410	466	417	446	441	436	468	428	7%	5,628	7%
	Parent	528	567	571	487	569	468	469	509	548	574	573	590	569	9%	7,022	8%
	Relative/Friend/Neighbor	462	513	493	396	531	394	440	475	496	517	475	488	475	7%	6,155	7%
	Anonymous	711	753	641	595	602	623	641	628	789	683	538	573	565	9%	8,342	10%
	CP&P	142	150	107	129	125	121	107	130	143	140	115	142	106	2%	1,657	2%
	Court/Legal	162	148	116	135	130	130	131	158	164	154	143	193	141	2%	1,905	2%
	Community Group/Individual	279	320	299	265	318	289	294	325	290	301	290	317	301	5%	3,888	5%
	Facility Staff (incl Correctional Facility)	89	97	75	46	85	70	72	68	97	64	101	135	103	2%	1,102	1%
	Child (Self)	46	32	41	25	49	33	41	38	34	49	38	53	35	1%	514	1%
	Other	236	272	273	237	294	242	207	217	261	272	267	289	228	4%	3,295	4%
	Daycare/Babysitter	13	18	27	14	12	17	22	17	17	20	17	23	15	0%	232	0%
	<b>Total</b>		<b>6,362</b>	<b>7,579</b>	<b>6,976</b>	<b>6,195</b>	<b>7,060</b>	<b>6,577</b>	<b>6,939</b>	<b>6,876</b>	<b>7,756</b>	<b>6,563</b>	<b>5,319</b>	<b>5,510</b>	<b>6,382</b>		<b>86,094</b>

**Table 4: Monthly Count of CPS Reports and CWS Referrals Assigned to Counties**

County														Average Number of Assignments Last 13 Months	Aug 18 to Sep 18 Numerical Difference
	Sep 2017	Oct 2017	Nov 2017	Dec 2017	Jan 2018	Feb 2018	Mar 2018	Apr 2018	May 2018	Jun 2018	Jul 2018	Aug 2018	Sep 2018		
Atlantic	255	293	253	221	291	208	267	260	326	284	213	231	295	261	64
Bergen	362	428	418	416	394	371	458	374	474	354	291	243	333	378	90
Burlington	328	371	343	294	315	307	290	312	302	304	284	246	270	305	24
Camden	530	675	576	535	634	526	559	562	643	564	472	485	543	562	58
Cape May	68	86	84	77	82	73	68	95	100	97	80	85	109	85	24
Cumberland	249	252	213	193	250	174	223	265	266	202	159	205	225	221	20
Essex	642	804	721	665	787	695	778	770	811	713	545	622	666	709	44
Gloucester	232	282	267	252	268	219	239	272	298	231	200	229	215	246	-14
Hudson	418	452	454	418	439	386	466	454	509	412	330	342	426	424	84
Hunterdon	64	64	50	60	60	54	58	67	62	56	48	49	57	58	8
Mercer	308	282	298	232	264	262	262	295	330	274	223	247	231	270	-16
Middlesex	420	533	525	419	540	463	498	473	534	474	358	366	433	464	67
Monmouth	349	442	381	327	413	384	427	376	446	341	302	277	410	375	133
Morris	216	290	250	219	269	191	245	240	256	199	204	186	215	229	29
Ocean	342	422	418	356	411	364	420	397	427	398	357	371	386	390	15
Passaic	425	576	513	421	451	456	469	448	571	423	307	383	421	451	38
Salem	102	83	100	80	90	68	99	92	90	79	65	77	104	87	27
Somerset	127	166	169	172	156	157	179	174	180	189	141	128	155	161	27
Sussex	92	106	111	92	126	90	102	124	112	118	82	82	99	103	17
Union	345	353	343	324	361	366	352	321	379	343	260	221	328	330	107
Warren	117	131	102	72	94	101	117	108	117	110	87	105	118	106	13
<b>County Subtotals</b>	<b>5,991</b>	<b>7,091</b>	<b>6,589</b>	<b>5,845</b>	<b>6,695</b>	<b>5,915</b>	<b>6,576</b>	<b>6,479</b>	<b>7,233</b>	<b>6,165</b>	<b>5,008</b>	<b>5,180</b>	<b>6,039</b>	<b>6,216</b>	<b>859</b>
Central Region IAIU	54	68	73	55	62	58	63	62	89	64	40	57	39	60	-18
Metro Region IAIU	41	58	48	56	54	63	48	52	78	60	40	38	50	53	12
Northern Region IAIU	51	70	58	54	60	53	53	69	88	60	42	34	63	58	29
Southern Region IAIU	66	102	77	84	90	75	74	86	95	71	61	76	67	79	-9
<b>IAIU Subtotals</b>	<b>212</b>	<b>298</b>	<b>256</b>	<b>249</b>	<b>266</b>	<b>249</b>	<b>238</b>	<b>269</b>	<b>350</b>	<b>255</b>	<b>183</b>	<b>205</b>	<b>219</b>	<b>250</b>	<b>14</b>
<b>Unable to Determine<sup>1</sup></b>	<b>158</b>	<b>187</b>	<b>129</b>	<b>98</b>	<b>94</b>	<b>407</b>	<b>122</b>	<b>125</b>	<b>169</b>	<b>137</b>	<b>128</b>	<b>122</b>	<b>123</b>	<b>154</b>	<b>1</b>
<b>Other Offices</b>	<b>1</b>	<b>3</b>	<b>2</b>	<b>3</b>	<b>5</b>	<b>6</b>	<b>3</b>	<b>3</b>	<b>4</b>	<b>6</b>	<b>0</b>	<b>3</b>	<b>1</b>	<b>3</b>	<b>-2</b>
<b>Grand Total</b>	<b>6,362</b>	<b>7,579</b>	<b>6,976</b>	<b>6,195</b>	<b>7,060</b>	<b>6,577</b>	<b>6,939</b>	<b>6,876</b>	<b>7,756</b>	<b>6,563</b>	<b>5,319</b>	<b>5,510</b>	<b>6,382</b>	<b>6,623</b>	<b>872</b>

<sup>1</sup>CPS Reports or CWS Referrals not assigned to an office through the Assignment Designee, but were assigned to an office for an assessment or investigation.





**Table 5: Monthly Count of CPS Reports and CWS Referrals Assigned to CP&P Local Offices**

County	Local Office	Type of Referral	Sep 2017	Oct 2017	Nov 2017	Dec 2017	Jan 2018	Feb 2018	Mar 2018	Apr 2018	May 2018	Jun 2018	Jul 2018	Aug 2018	Sep 2018	Total
ATLANTIC	Atlantic East	CPS	107	138	99	94	127	95	131	118	157	132	97	106	132	1,533
		CWS	35	47	51	33	36	29	28	32	40	49	31	46	43	500
		<b>Total</b>	<b>142</b>	<b>185</b>	<b>150</b>	<b>127</b>	<b>163</b>	<b>124</b>	<b>159</b>	<b>150</b>	<b>197</b>	<b>181</b>	<b>128</b>	<b>152</b>	<b>175</b>	<b>2,033</b>
	Atlantic West	CPS	90	74	79	75	94	68	75	88	98	74	68	60	89	1,032
		CWS	23	34	24	19	34	16	33	22	31	29	17	19	31	332
		<b>Total</b>	<b>113</b>	<b>108</b>	<b>103</b>	<b>94</b>	<b>128</b>	<b>84</b>	<b>108</b>	<b>110</b>	<b>129</b>	<b>103</b>	<b>85</b>	<b>79</b>	<b>120</b>	<b>1,364</b>
	County Totals	CPS	197	212	178	169	221	163	206	206	255	206	165	166	221	2,565
		CWS	58	81	75	52	70	45	61	54	71	78	48	65	74	832
		<b>Total</b>	<b>255</b>	<b>293</b>	<b>253</b>	<b>221</b>	<b>291</b>	<b>208</b>	<b>267</b>	<b>260</b>	<b>326</b>	<b>284</b>	<b>213</b>	<b>231</b>	<b>295</b>	<b>3,397</b>
BERGEN	Bergen Central	CPS	106	142	140	128	138	112	144	122	141	112	76	59	88	1,508
		CWS	47	45	47	48	40	44	54	37	58	52	32	25	44	573
		<b>Total</b>	<b>153</b>	<b>187</b>	<b>187</b>	<b>176</b>	<b>178</b>	<b>156</b>	<b>198</b>	<b>159</b>	<b>199</b>	<b>164</b>	<b>108</b>	<b>84</b>	<b>132</b>	<b>2,081</b>
	Bergen South	CPS	149	182	167	177	154	163	198	144	199	119	136	112	152	2,052
		CWS	60	59	64	63	62	52	62	71	76	71	47	47	49	783
		<b>Total</b>	<b>209</b>	<b>241</b>	<b>231</b>	<b>240</b>	<b>216</b>	<b>215</b>	<b>260</b>	<b>215</b>	<b>275</b>	<b>190</b>	<b>183</b>	<b>159</b>	<b>201</b>	<b>2,835</b>
	County Totals	CPS	255	324	307	305	292	275	342	266	340	231	212	171	240	3,560
		CWS	107	104	111	111	102	96	116	108	134	123	79	72	93	1,356
		<b>Total</b>	<b>362</b>	<b>428</b>	<b>418</b>	<b>416</b>	<b>394</b>	<b>371</b>	<b>458</b>	<b>374</b>	<b>474</b>	<b>354</b>	<b>291</b>	<b>243</b>	<b>333</b>	<b>4,916</b>
BURLINGTON	Burlington East	CPS	125	146	137	101	129	110	118	116	104	115	117	93	93	1,504
		CWS	39	52	43	38	39	46	35	36	46	45	37	33	31	520
		<b>Total</b>	<b>164</b>	<b>198</b>	<b>180</b>	<b>139</b>	<b>168</b>	<b>156</b>	<b>153</b>	<b>152</b>	<b>150</b>	<b>160</b>	<b>154</b>	<b>126</b>	<b>124</b>	<b>2,024</b>
	Burlington West	CPS	116	126	117	99	108	117	105	108	120	114	100	83	113	1,426
		CWS	48	47	46	56	39	34	32	52	32	30	30	37	33	516
		<b>Total</b>	<b>164</b>	<b>173</b>	<b>163</b>	<b>155</b>	<b>147</b>	<b>151</b>	<b>137</b>	<b>160</b>	<b>152</b>	<b>144</b>	<b>130</b>	<b>120</b>	<b>146</b>	<b>1,942</b>
	County Totals	CPS	241	272	254	200	237	227	223	224	224	229	217	176	206	2,930
		CWS	87	99	89	94	78	80	67	88	78	75	67	70	64	1,036
		<b>Total</b>	<b>328</b>	<b>371</b>	<b>343</b>	<b>294</b>	<b>315</b>	<b>307</b>	<b>290</b>	<b>312</b>	<b>302</b>	<b>304</b>	<b>284</b>	<b>246</b>	<b>270</b>	<b>3,966</b>
CAMDEN	Camden Central	CPS	106	148	129	122	157	108	126	111	141	109	113	109	103	1,582
		CWS	27	40	41	51	31	30	39	32	47	33	27	27	36	461
		<b>Total</b>	<b>133</b>	<b>188</b>	<b>170</b>	<b>173</b>	<b>188</b>	<b>138</b>	<b>165</b>	<b>143</b>	<b>188</b>	<b>142</b>	<b>140</b>	<b>136</b>	<b>139</b>	<b>2,043</b>
	Camden East	CPS	104	123	118	100	116	99	129	139	127	113	99	99	106	1,472
		CWS	30	49	46	27	39	37	32	30	30	41	32	36	44	473
		<b>Total</b>	<b>134</b>	<b>172</b>	<b>164</b>	<b>127</b>	<b>155</b>	<b>136</b>	<b>161</b>	<b>169</b>	<b>157</b>	<b>154</b>	<b>131</b>	<b>135</b>	<b>150</b>	<b>1,945</b>
	Camden North	CPS	112	113	109	82	118	114	105	106	120	115	80	74	91	1,339
		CWS	41	47	31	35	50	24	34	25	41	44	26	33	34	465
		<b>Total</b>	<b>153</b>	<b>160</b>	<b>140</b>	<b>117</b>	<b>168</b>	<b>138</b>	<b>139</b>	<b>131</b>	<b>161</b>	<b>159</b>	<b>106</b>	<b>107</b>	<b>125</b>	<b>1,804</b>
	Camden South	CPS	88	108	74	85	89	79	75	100	113	86	72	85	98	1,152
		CWS	22	47	28	33	34	35	19	19	24	23	23	22	31	360
		<b>Total</b>	<b>110</b>	<b>155</b>	<b>102</b>	<b>118</b>	<b>123</b>	<b>114</b>	<b>94</b>	<b>119</b>	<b>137</b>	<b>109</b>	<b>95</b>	<b>107</b>	<b>129</b>	<b>1,512</b>
	County Totals	CPS	410	492	430	389	480	400	435	456	501	423	364	367	398	5,545
		CWS	120	183	146	146	154	126	124	106	142	141	108	118	145	1,759
		<b>Total</b>	<b>530</b>	<b>675</b>	<b>576</b>	<b>535</b>	<b>634</b>	<b>526</b>	<b>559</b>	<b>562</b>	<b>643</b>	<b>564</b>	<b>472</b>	<b>485</b>	<b>543</b>	<b>7,304</b>
CAPE MAY	Cape May	CPS	58	66	61	58	64	47	46	69	81	76	60	73	89	848
		CWS	10	20	23	19	18	26	22	26	19	21	20	12	20	256
		<b>Total</b>	<b>68</b>	<b>86</b>	<b>84</b>	<b>77</b>	<b>82</b>	<b>73</b>	<b>68</b>	<b>95</b>	<b>100</b>	<b>97</b>	<b>80</b>	<b>85</b>	<b>109</b>	<b>1,104</b>
	County Totals	CPS	58	66	61	58	64	47	46	69	81	76	60	73	89	848
		CWS	10	20	23	19	18	26	22	26	19	21	20	12	20	256
		<b>Total</b>	<b>68</b>	<b>86</b>	<b>84</b>	<b>77</b>	<b>82</b>	<b>73</b>	<b>68</b>	<b>95</b>	<b>100</b>	<b>97</b>	<b>80</b>	<b>85</b>	<b>109</b>	<b>1,104</b>
CUMBERLAND	Cumberland East	CPS	72	68	48	44	62	36	55	60	56	58	47	44	60	710
		CWS	19	27	13	22	16	17	18	18	17	15	15	13	15	225
		<b>Total</b>	<b>91</b>	<b>95</b>	<b>61</b>	<b>66</b>	<b>78</b>	<b>53</b>	<b>73</b>	<b>78</b>	<b>73</b>	<b>73</b>	<b>62</b>	<b>57</b>	<b>75</b>	<b>935</b>
	Cumberland West	CPS	118	117	113	101	146	92	126	146	146	111	82	118	118	1,534
		CWS	40	40	39	26	26	29	24	41	47	18	15	30	32	407
		<b>Total</b>	<b>158</b>	<b>157</b>	<b>152</b>	<b>127</b>	<b>172</b>	<b>121</b>	<b>150</b>	<b>187</b>	<b>193</b>	<b>129</b>	<b>97</b>	<b>148</b>	<b>150</b>	<b>1,941</b>
	County Totals	CPS	190	185	161	145	208	128	181	206	202	169	129	162	178	2,244
		CWS	59	67	52	48	42	46	42	59	64	33	30	43	47	632
		<b>Total</b>	<b>249</b>	<b>252</b>	<b>213</b>	<b>193</b>	<b>250</b>	<b>174</b>	<b>223</b>	<b>265</b>	<b>266</b>	<b>202</b>	<b>159</b>	<b>205</b>	<b>225</b>	<b>2,876</b>

Data in this report is preliminary and may differ from any final report. This report is produced to ensure continuous quality improvement throughout DCF.

**Table 5: Monthly Count of CPS Reports and CWS Referrals Assigned to CP&P Local Offices**

County	Local Office	Type of Referral	Sep 2017	Oct 2017	Nov 2017	Dec 2017	Jan 2018	Feb 2018	Mar 2018	Apr 2018	May 2018	Jun 2018	Jul 2018	Aug 2018	Sep 2018	Total
ESSEX	Essex Central	CPS	79	121	108	79	93	77	107	103	113	95	70	92	68	1,205
		CWS	33	40	33	28	42	22	35	36	39	23	21	23	41	416
		<b>Total</b>	<b>112</b>	<b>161</b>	<b>141</b>	<b>107</b>	<b>135</b>	<b>99</b>	<b>142</b>	<b>139</b>	<b>152</b>	<b>118</b>	<b>91</b>	<b>115</b>	<b>109</b>	<b>1,621</b>
	Essex North	CPS	70	68	67	64	80	71	75	70	83	62	41	61	65	877
		CWS	23	35	31	25	25	21	34	24	24	35	18	15	28	338
		<b>Total</b>	<b>93</b>	<b>103</b>	<b>98</b>	<b>89</b>	<b>105</b>	<b>92</b>	<b>109</b>	<b>94</b>	<b>107</b>	<b>97</b>	<b>59</b>	<b>76</b>	<b>93</b>	<b>1,215</b>
	Essex South	CPS	58	69	68	72	83	64	63	83	65	92	46	76	63	902
		CWS	19	34	20	28	18	30	21	20	24	25	27	17	28	311
		<b>Total</b>	<b>77</b>	<b>103</b>	<b>88</b>	<b>100</b>	<b>101</b>	<b>94</b>	<b>84</b>	<b>103</b>	<b>89</b>	<b>117</b>	<b>73</b>	<b>93</b>	<b>91</b>	<b>1,213</b>
	Newark Center City	CPS	89	110	98	104	107	86	105	88	105	91	75	81	102	1,241
		CWS	30	29	34	18	34	35	34	38	42	33	26	26	27	406
		<b>Total</b>	<b>119</b>	<b>139</b>	<b>132</b>	<b>122</b>	<b>141</b>	<b>121</b>	<b>139</b>	<b>126</b>	<b>147</b>	<b>124</b>	<b>101</b>	<b>107</b>	<b>129</b>	<b>1,647</b>
	Newark Northeast	CPS	94	99	106	76	107	97	97	99	104	81	71	84	76	1,191
		CWS	29	44	34	30	44	39	44	38	40	42	24	35	29	472
		<b>Total</b>	<b>123</b>	<b>143</b>	<b>140</b>	<b>106</b>	<b>151</b>	<b>136</b>	<b>141</b>	<b>137</b>	<b>144</b>	<b>123</b>	<b>95</b>	<b>119</b>	<b>105</b>	<b>1,663</b>
	Newark South	CPS	80	116	93	103	116	111	116	128	138	106	95	76	93	1,371
		CWS	38	39	29	38	38	42	47	43	34	28	31	36	46	489
		<b>Total</b>	<b>118</b>	<b>155</b>	<b>122</b>	<b>141</b>	<b>154</b>	<b>153</b>	<b>163</b>	<b>171</b>	<b>172</b>	<b>134</b>	<b>126</b>	<b>112</b>	<b>139</b>	<b>1,860</b>
County Totals	CPS	470	583	540	498	586	506	563	571	608	527	398	470	467	6,787	
	CWS	172	221	181	167	201	189	215	199	203	186	147	152	199	2,432	
	<b>Total</b>	<b>642</b>	<b>804</b>	<b>721</b>	<b>665</b>	<b>787</b>	<b>695</b>	<b>778</b>	<b>770</b>	<b>811</b>	<b>713</b>	<b>545</b>	<b>622</b>	<b>666</b>	<b>9,219</b>	
GLOUCESTER	Gloucester East	CPS	79	102	89	96	94	85	79	113	118	79	75	76	86	1,171
		CWS	33	28	34	30	35	22	24	41	26	18	20	31	22	364
		<b>Total</b>	<b>112</b>	<b>130</b>	<b>123</b>	<b>126</b>	<b>129</b>	<b>107</b>	<b>103</b>	<b>154</b>	<b>144</b>	<b>97</b>	<b>95</b>	<b>107</b>	<b>108</b>	<b>1,535</b>
	Gloucester West	CPS	86	123	113	100	105	93	100	96	118	100	82	101	79	1,296
		CWS	34	29	31	26	34	19	36	22	36	34	23	21	28	373
		<b>Total</b>	<b>120</b>	<b>152</b>	<b>144</b>	<b>126</b>	<b>139</b>	<b>112</b>	<b>136</b>	<b>118</b>	<b>154</b>	<b>134</b>	<b>105</b>	<b>122</b>	<b>107</b>	<b>1,669</b>
	County Totals	CPS	165	225	202	196	199	178	179	209	236	179	157	177	165	2,467
		CWS	67	57	65	56	69	41	60	63	62	52	43	52	50	737
		<b>Total</b>	<b>232</b>	<b>282</b>	<b>267</b>	<b>252</b>	<b>268</b>	<b>219</b>	<b>239</b>	<b>272</b>	<b>298</b>	<b>231</b>	<b>200</b>	<b>229</b>	<b>215</b>	<b>3,204</b>
HUDSON	Hudson Central	CPS	69	71	87	83	103	88	98	115	131	93	83	89	93	1,203
		CWS	35	34	41	38	46	37	36	36	56	57	38	39	43	536
		<b>Total</b>	<b>104</b>	<b>105</b>	<b>128</b>	<b>121</b>	<b>149</b>	<b>125</b>	<b>134</b>	<b>151</b>	<b>187</b>	<b>150</b>	<b>121</b>	<b>128</b>	<b>136</b>	<b>1,739</b>
	Hudson North	CPS	72	76	83	87	75	77	92	98	79	62	34	51	71	957
		CWS	31	29	33	21	29	12	32	26	38	22	19	14	26	332
		<b>Total</b>	<b>103</b>	<b>105</b>	<b>116</b>	<b>108</b>	<b>104</b>	<b>89</b>	<b>124</b>	<b>124</b>	<b>117</b>	<b>84</b>	<b>53</b>	<b>65</b>	<b>97</b>	<b>1,289</b>
	Hudson South	CPS	80	86	68	46	57	47	65	53	47	55	38	43	41	726
		CWS	27	39	17	19	26	19	24	15	18	19	16	17	34	290
		<b>Total</b>	<b>107</b>	<b>125</b>	<b>85</b>	<b>65</b>	<b>83</b>	<b>66</b>	<b>89</b>	<b>68</b>	<b>65</b>	<b>74</b>	<b>54</b>	<b>60</b>	<b>75</b>	<b>1,016</b>
	Hudson West	CPS	74	87	104	89	74	80	80	80	102	72	72	59	84	1,057
		CWS	30	30	21	35	29	26	39	31	38	32	30	30	34	405
		<b>Total</b>	<b>104</b>	<b>117</b>	<b>125</b>	<b>124</b>	<b>103</b>	<b>106</b>	<b>119</b>	<b>111</b>	<b>140</b>	<b>104</b>	<b>102</b>	<b>89</b>	<b>118</b>	<b>1,462</b>
County Totals	CPS	295	320	342	305	309	292	335	346	359	282	227	242	289	3,943	
	CWS	123	132	112	113	130	94	131	108	150	130	103	100	137	1,563	
	<b>Total</b>	<b>418</b>	<b>452</b>	<b>454</b>	<b>418</b>	<b>439</b>	<b>386</b>	<b>466</b>	<b>454</b>	<b>509</b>	<b>412</b>	<b>330</b>	<b>342</b>	<b>426</b>	<b>5,506</b>	
HUNTERDON	Hunterdon	CPS	46	40	30	44	43	36	42	47	44	43	37	40	40	532
		CWS	18	24	20	16	17	18	16	20	18	13	11	9	17	217
		<b>Total</b>	<b>64</b>	<b>64</b>	<b>50</b>	<b>60</b>	<b>60</b>	<b>54</b>	<b>58</b>	<b>67</b>	<b>62</b>	<b>56</b>	<b>48</b>	<b>49</b>	<b>57</b>	<b>749</b>
	County Totals	CPS	46	40	30	44	43	36	42	47	44	43	37	40	40	532
		CWS	18	24	20	16	17	18	16	20	18	13	11	9	17	217
<b>Total</b>		<b>64</b>	<b>64</b>	<b>50</b>	<b>60</b>	<b>60</b>	<b>54</b>	<b>58</b>	<b>67</b>	<b>62</b>	<b>56</b>	<b>48</b>	<b>49</b>	<b>57</b>	<b>749</b>	
MERCER	Mercer North	CPS	103	104	105	79	94	103	95	124	125	107	81	107	84	1,311
		CWS	49	34	38	35	46	43	42	34	39	32	31	28	25	476
		<b>Total</b>	<b>152</b>	<b>138</b>	<b>143</b>	<b>114</b>	<b>140</b>	<b>146</b>	<b>137</b>	<b>158</b>	<b>164</b>	<b>139</b>	<b>112</b>	<b>135</b>	<b>109</b>	<b>1,787</b>
	Mercer South	CPS	109	109	112	86	89	98	90	104	134	105	86	78	89	1,289
		CWS	46	35	43	32	35	18	35	33	32	30	25	34	33	431
		<b>Total</b>	<b>155</b>	<b>144</b>	<b>155</b>	<b>118</b>	<b>124</b>	<b>116</b>	<b>125</b>	<b>137</b>	<b>166</b>	<b>135</b>	<b>111</b>	<b>112</b>	<b>122</b>	<b>1,720</b>
	County Totals	CPS	212	213	217	165	183	201	185	228	259	212	167	185	173	2,600
		CWS	95	69	81	67	81	61	77	67	71	62	56	62	58	907
<b>Total</b>		<b>307</b>	<b>282</b>	<b>298</b>	<b>232</b>	<b>264</b>	<b>262</b>	<b>262</b>	<b>295</b>	<b>330</b>	<b>274</b>	<b>223</b>	<b>247</b>	<b>231</b>	<b>3,507</b>	



**Table 5: Monthly Count of CPS Reports and CWS Referrals Assigned to CP&P Local Offices**

County	Local Office	Type of Referral	Sep 2017	Oct 2017	Nov 2017	Dec 2017	Jan 2018	Feb 2018	Mar 2018	Apr 2018	May 2018	Jun 2018	Jul 2018	Aug 2018	Sep 2018	Total
MIDDLESEX	Middlesex Central	CPS	99	102	115	87	139	96	118	104	118	101	78	62	75	1294
		CWS	36	41	35	35	40	35	29	36	29	36	32	28	30	442
		<b>Total</b>	<b>135</b>	<b>143</b>	<b>150</b>	<b>122</b>	<b>179</b>	<b>131</b>	<b>147</b>	<b>140</b>	<b>147</b>	<b>137</b>	<b>110</b>	<b>90</b>	<b>105</b>	<b>1736</b>
	Middlesex Coastal	CPS	112	142	124	121	127	124	125	128	144	123	111	100	120	1601
		CWS	41	51	53	33	51	28	45	36	52	42	24	37	39	532
		<b>Total</b>	<b>153</b>	<b>193</b>	<b>177</b>	<b>154</b>	<b>178</b>	<b>152</b>	<b>170</b>	<b>164</b>	<b>196</b>	<b>165</b>	<b>135</b>	<b>137</b>	<b>159</b>	<b>2133</b>
	Middlesex West	CPS	112	141	140	106	132	134	148	128	146	128	83	88	129	1615
		CWS	20	56	58	37	51	46	33	41	45	44	30	51	40	552
		<b>Total</b>	<b>132</b>	<b>197</b>	<b>198</b>	<b>143</b>	<b>183</b>	<b>180</b>	<b>181</b>	<b>169</b>	<b>191</b>	<b>172</b>	<b>113</b>	<b>139</b>	<b>169</b>	<b>2167</b>
	County Totals	CPS	323	385	379	314	398	354	391	360	408	352	272	250	324	4510
CWS		97	148	146	105	142	109	107	113	126	122	86	116	109	1526	
<b>Total</b>		<b>420</b>	<b>533</b>	<b>525</b>	<b>419</b>	<b>540</b>	<b>463</b>	<b>498</b>	<b>473</b>	<b>534</b>	<b>474</b>	<b>358</b>	<b>366</b>	<b>433</b>	<b>6036</b>	
MONMOUTH	Monmouth North	CPS	139	173	152	125	160	167	162	149	174	152	118	107	159	1937
		CWS	38	54	54	44	61	60	58	56	61	34	36	36	61	653
		<b>Total</b>	<b>177</b>	<b>227</b>	<b>206</b>	<b>169</b>	<b>221</b>	<b>227</b>	<b>220</b>	<b>205</b>	<b>235</b>	<b>186</b>	<b>154</b>	<b>143</b>	<b>220</b>	<b>2590</b>
	Monmouth South	CPS	120	161	133	114	150	123	159	137	160	113	112	91	149	1722
		CWS	52	54	42	44	42	34	48	34	51	42	36	43	41	563
		<b>Total</b>	<b>172</b>	<b>215</b>	<b>175</b>	<b>158</b>	<b>192</b>	<b>157</b>	<b>207</b>	<b>171</b>	<b>211</b>	<b>155</b>	<b>148</b>	<b>134</b>	<b>190</b>	<b>2285</b>
	County Totals	CPS	259	334	285	239	310	290	321	286	334	265	230	198	308	3659
		CWS	90	108	96	88	103	94	106	90	112	76	72	79	102	1216
		<b>Total</b>	<b>349</b>	<b>442</b>	<b>381</b>	<b>327</b>	<b>413</b>	<b>384</b>	<b>427</b>	<b>376</b>	<b>446</b>	<b>341</b>	<b>302</b>	<b>277</b>	<b>410</b>	<b>4875</b>
MORRIS	Morris East	CPS	60	81	86	66	96	64	73	71	94	66	79	74	75	985
		CWS	35	36	38	31	40	32	34	32	29	25	24	20	24	400
		<b>Total</b>	<b>95</b>	<b>117</b>	<b>124</b>	<b>97</b>	<b>136</b>	<b>96</b>	<b>107</b>	<b>103</b>	<b>123</b>	<b>91</b>	<b>103</b>	<b>94</b>	<b>99</b>	<b>1385</b>
	Morris West	CPS	85	112	99	88	86	63	97	103	107	77	75	74	84	1150
		CWS	36	61	27	34	47	32	41	34	26	31	26	18	32	445
		<b>Total</b>	<b>121</b>	<b>173</b>	<b>126</b>	<b>122</b>	<b>133</b>	<b>95</b>	<b>138</b>	<b>137</b>	<b>133</b>	<b>108</b>	<b>101</b>	<b>92</b>	<b>116</b>	<b>1595</b>
	County Totals	CPS	145	193	185	154	182	127	170	174	201	143	154	148	159	2135
		CWS	71	97	65	65	87	64	75	66	55	56	50	38	56	845
		<b>Total</b>	<b>216</b>	<b>290</b>	<b>250</b>	<b>219</b>	<b>269</b>	<b>191</b>	<b>245</b>	<b>240</b>	<b>256</b>	<b>199</b>	<b>204</b>	<b>186</b>	<b>215</b>	<b>2980</b>
OCEAN	Ocean North	CPS	134	179	181	168	163	133	161	167	166	144	163	143	154	2056
		CWS	37	52	45	36	56	43	44	40	69	51	34	38	40	585
		<b>Total</b>	<b>171</b>	<b>231</b>	<b>226</b>	<b>204</b>	<b>219</b>	<b>176</b>	<b>205</b>	<b>207</b>	<b>235</b>	<b>195</b>	<b>197</b>	<b>181</b>	<b>194</b>	<b>2641</b>
	Ocean South	CPS	129	144	142	121	159	146	174	146	149	167	124	135	160	1896
		CWS	42	47	50	31	33	42	41	44	43	36	36	55	32	532
		<b>Total</b>	<b>171</b>	<b>191</b>	<b>192</b>	<b>152</b>	<b>192</b>	<b>188</b>	<b>215</b>	<b>190</b>	<b>192</b>	<b>203</b>	<b>160</b>	<b>190</b>	<b>192</b>	<b>2428</b>
	County Totals	CPS	263	323	323	289	322	279	335	313	315	311	287	278	314	3952
		CWS	79	99	95	67	89	85	85	84	112	87	70	93	72	1117
		<b>Total</b>	<b>342</b>	<b>422</b>	<b>418</b>	<b>356</b>	<b>411</b>	<b>364</b>	<b>420</b>	<b>397</b>	<b>427</b>	<b>398</b>	<b>357</b>	<b>371</b>	<b>386</b>	<b>5069</b>
PASSAIC	Passaic Central	CPS	172	228	199	155	173	171	171	178	243	163	108	128	164	2253
		CWS	60	90	76	78	65	75	74	62	87	54	43	51	55	870
		<b>Total</b>	<b>232</b>	<b>318</b>	<b>275</b>	<b>233</b>	<b>238</b>	<b>246</b>	<b>245</b>	<b>240</b>	<b>330</b>	<b>217</b>	<b>151</b>	<b>179</b>	<b>219</b>	<b>3123</b>
	Passaic North	CPS	130	176	158	131	134	135	166	152	185	143	104	147	128	1889
		CWS	63	82	80	57	79	75	58	56	56	63	52	57	74	852
		<b>Total</b>	<b>193</b>	<b>258</b>	<b>238</b>	<b>188</b>	<b>213</b>	<b>210</b>	<b>224</b>	<b>208</b>	<b>241</b>	<b>206</b>	<b>156</b>	<b>204</b>	<b>202</b>	<b>2741</b>
	County Totals	CPS	302	404	357	286	307	306	337	330	428	306	212	275	292	4142
		CWS	123	172	156	135	144	150	132	118	143	117	95	108	129	1722
		<b>Total</b>	<b>425</b>	<b>576</b>	<b>513</b>	<b>421</b>	<b>451</b>	<b>456</b>	<b>469</b>	<b>448</b>	<b>571</b>	<b>423</b>	<b>307</b>	<b>383</b>	<b>421</b>	<b>5864</b>
SALEM	Salem	CPS	82	67	77	58	68	56	79	77	73	62	52	56	73	880
		CWS	20	16	23	22	22	12	20	15	17	17	13	21	31	249
		<b>Total</b>	<b>102</b>	<b>83</b>	<b>100</b>	<b>80</b>	<b>90</b>	<b>68</b>	<b>99</b>	<b>92</b>	<b>90</b>	<b>79</b>	<b>65</b>	<b>77</b>	<b>104</b>	<b>1129</b>
	County Totals	CPS	82	67	77	58	68	56	79	77	73	62	52	56	73	880
		CWS	20	16	23	22	22	12	20	15	17	17	13	21	31	249
<b>Total</b>	<b>102</b>	<b>83</b>	<b>100</b>	<b>80</b>	<b>90</b>	<b>68</b>	<b>99</b>	<b>92</b>	<b>90</b>	<b>79</b>	<b>65</b>	<b>77</b>	<b>104</b>	<b>1129</b>		
SOMERSET	Somerset	CPS	97	136	130	119	119	127	115	140	136	155	106	93	125	1598
		CWS	30	30	39	53	37	30	64	34	44	34	35	35	30	495
		<b>Total</b>	<b>127</b>	<b>166</b>	<b>169</b>	<b>172</b>	<b>156</b>	<b>157</b>	<b>179</b>	<b>174</b>	<b>180</b>	<b>189</b>	<b>141</b>	<b>128</b>	<b>155</b>	<b>2093</b>
	County Totals	CPS	97	136	130	119	119	127	115	140	136	155	106	93	125	1598
		CWS	30	30	39	53	37	30	64	34	44	34	35	35	30	495
<b>Total</b>	<b>127</b>	<b>166</b>	<b>169</b>	<b>172</b>	<b>156</b>	<b>157</b>	<b>179</b>	<b>174</b>	<b>180</b>	<b>189</b>	<b>141</b>	<b>128</b>	<b>155</b>	<b>2093</b>		

Data in this report is preliminary and may differ from any final report. This report is produced to ensure continuous quality improvement throughout DCF.

**Table 5: Monthly Count of CPS Reports and CWS Referrals Assigned to CP&P Local Offices**

County	Local Office	Type of Referral	Sep 2017	Oct 2017	Nov 2017	Dec 2017	Jan 2018	Feb 2018	Mar 2018	Apr 2018	May 2018	Jun 2018	Jul 2018	Aug 2018	Sep 2018	Total
SUSSEX	Sussex	CPS	69	80	86	70	85	64	70	90	87	94	62	60	72	989
		CWS	23	26	25	22	41	26	32	34	25	24	20	22	27	347
		<b>Total</b>	<b>92</b>	<b>106</b>	<b>111</b>	<b>92</b>	<b>126</b>	<b>90</b>	<b>102</b>	<b>124</b>	<b>112</b>	<b>118</b>	<b>82</b>	<b>82</b>	<b>99</b>	<b>1336</b>
	County Totals	CPS	69	80	86	70	85	64	70	90	87	94	62	60	72	989
		CWS	23	26	25	22	41	26	32	34	25	24	20	22	27	347
		<b>Total</b>	<b>92</b>	<b>106</b>	<b>111</b>	<b>92</b>	<b>126</b>	<b>90</b>	<b>102</b>	<b>124</b>	<b>112</b>	<b>118</b>	<b>82</b>	<b>82</b>	<b>99</b>	<b>1336</b>
UNION	Union Central	CPS	68	74	84	91	88	89	87	88	98	78	67	54	76	1042
		CWS	40	31	18	19	30	36	29	25	28	25	23	21	25	350
		<b>Total</b>	<b>108</b>	<b>105</b>	<b>102</b>	<b>110</b>	<b>118</b>	<b>125</b>	<b>116</b>	<b>113</b>	<b>126</b>	<b>103</b>	<b>90</b>	<b>75</b>	<b>101</b>	<b>1392</b>
	Union East	CPS	91	88	91	75	102	91	98	74	89	92	63	48	89	1091
		CWS	31	39	26	29	26	32	33	26	27	32	24	21	34	380
		<b>Total</b>	<b>122</b>	<b>127</b>	<b>117</b>	<b>104</b>	<b>128</b>	<b>123</b>	<b>131</b>	<b>100</b>	<b>116</b>	<b>124</b>	<b>87</b>	<b>69</b>	<b>123</b>	<b>1471</b>
	Union West	CPS	86	88	88	83	77	84	83	81	98	91	58	54	77	1048
		CWS	29	33	36	27	38	34	22	27	39	25	25	23	27	385
		<b>Total</b>	<b>115</b>	<b>121</b>	<b>124</b>	<b>110</b>	<b>115</b>	<b>118</b>	<b>105</b>	<b>108</b>	<b>137</b>	<b>116</b>	<b>83</b>	<b>77</b>	<b>104</b>	<b>1433</b>
	County Totals	CPS	245	250	263	249	267	264	268	243	285	261	188	156	242	3181
		CWS	100	103	80	75	94	102	84	78	94	82	72	65	86	1115
		<b>Total</b>	<b>345</b>	<b>353</b>	<b>343</b>	<b>324</b>	<b>361</b>	<b>366</b>	<b>352</b>	<b>321</b>	<b>379</b>	<b>343</b>	<b>260</b>	<b>221</b>	<b>328</b>	<b>4296</b>
WARREN	Warren	CPS	83	98	69	50	75	72	85	88	93	85	59	82	86	1025
		CWS	34	33	33	22	19	29	32	20	24	25	28	23	32	354
		<b>Total</b>	<b>117</b>	<b>131</b>	<b>102</b>	<b>72</b>	<b>94</b>	<b>101</b>	<b>117</b>	<b>108</b>	<b>117</b>	<b>110</b>	<b>87</b>	<b>105</b>	<b>118</b>	<b>1379</b>
	County Totals	CPS	83	98	69	50	75	72	85	88	93	85	59	82	86	1025
		CWS	34	33	33	22	19	29	32	20	24	25	28	23	32	354
		<b>Total</b>	<b>117</b>	<b>131</b>	<b>102</b>	<b>72</b>	<b>94</b>	<b>101</b>	<b>117</b>	<b>108</b>	<b>117</b>	<b>110</b>	<b>87</b>	<b>105</b>	<b>118</b>	<b>1379</b>
County CPS Referral Total		CPS	4,407	5,202	4,876	4,302	4,955	4,392	4,908	4,929	5,469	4,611	3,755	3,825	4,461	60,092
County CWS Referral Total		CWS	1,583	1,889	1,713	1,543	1,740	1,523	1,668	1,550	1,764	1,554	1,253	1,355	1,578	20,713
County Referral Total		<b>Total</b>	<b>5,990</b>	<b>7,091</b>	<b>6,589</b>	<b>5,845</b>	<b>6,695</b>	<b>5,915</b>	<b>6,576</b>	<b>6,479</b>	<b>7,233</b>	<b>6,165</b>	<b>5,008</b>	<b>5,180</b>	<b>6,039</b>	<b>80,805</b>
Central Region IAIU	CPS	54	68	73	55	62	58	63	62	89	64	40	57	39	784	
	CWS	0	0	0	0	0	0	0	0	0	0	0	0	0	0	
	<b>Total</b>	<b>54</b>	<b>68</b>	<b>73</b>	<b>55</b>	<b>62</b>	<b>58</b>	<b>63</b>	<b>62</b>	<b>89</b>	<b>64</b>	<b>40</b>	<b>57</b>	<b>39</b>	<b>784</b>	
Metro Region IAIU	CPS	41	58	48	56	54	63	48	52	78	60	40	38	50	686	
	CWS	0	0	0	0	0	0	0	0	0	0	0	0	0	0	
	<b>Total</b>	<b>41</b>	<b>58</b>	<b>48</b>	<b>56</b>	<b>54</b>	<b>63</b>	<b>48</b>	<b>52</b>	<b>78</b>	<b>60</b>	<b>40</b>	<b>38</b>	<b>50</b>	<b>686</b>	
Northern Region IAIU	CPS	51	70	58	54	60	53	53	69	88	60	42	34	63	755	
	CWS	0	0	0	0	0	0	0	0	0	0	0	0	0	0	
	<b>Total</b>	<b>51</b>	<b>70</b>	<b>58</b>	<b>54</b>	<b>60</b>	<b>53</b>	<b>53</b>	<b>69</b>	<b>88</b>	<b>60</b>	<b>42</b>	<b>34</b>	<b>63</b>	<b>755</b>	
Southern Region IAIU	CPS	66	102	77	84	90	75	74	86	95	71	61	76	67	1,024	
	CWS	0	0	0	0	0	0	0	0	0	0	0	0	0	0	
	<b>Total</b>	<b>66</b>	<b>102</b>	<b>77</b>	<b>84</b>	<b>90</b>	<b>75</b>	<b>74</b>	<b>86</b>	<b>95</b>	<b>71</b>	<b>61</b>	<b>76</b>	<b>67</b>	<b>1,024</b>	
IAIU CPS Subtotal		CPS	212	298	256	249	266	249	238	269	350	255	183	205	219	3,249
IAIU CWS Subtotal		CWS	0	0	0	0	0	0	0	0	0	0	0	0	0	0
IAIU Subtotal		<b>Total</b>	<b>212</b>	<b>298</b>	<b>256</b>	<b>249</b>	<b>266</b>	<b>249</b>	<b>238</b>	<b>269</b>	<b>350</b>	<b>255</b>	<b>183</b>	<b>205</b>	<b>219</b>	<b>3,249</b>
County and IAIU CPS Subtotal		CPS	4,619	5,500	5,132	4,551	5,221	4,641	5,146	5,198	5,819	4,866	3,938	4,030	4,680	63,341
County and IAIU CWS Subtotal		CWS	1,583	1,889	1,713	1,543	1,740	1,523	1,668	1,550	1,764	1,554	1,253	1,355	1,578	20,713
Unable to Determine <sup>(1)</sup>		<b>Total</b>	<b>158</b>	<b>187</b>	<b>129</b>	<b>98</b>	<b>94</b>	<b>407</b>	<b>122</b>	<b>125</b>	<b>169</b>	<b>137</b>	<b>128</b>	<b>122</b>	<b>123</b>	<b>1,999</b>
Other Offices		<b>Total</b>	<b>2</b>	<b>3</b>	<b>2</b>	<b>3</b>	<b>5</b>	<b>6</b>	<b>3</b>	<b>3</b>	<b>4</b>	<b>6</b>	<b>0</b>	<b>3</b>	<b>1</b>	<b>41</b>
Grand Total		<b>Total</b>	<b>6,362</b>	<b>7,579</b>	<b>6,976</b>	<b>6,195</b>	<b>7,060</b>	<b>6,577</b>	<b>6,939</b>	<b>6,876</b>	<b>7,756</b>	<b>6,563</b>	<b>5,319</b>	<b>5,510</b>	<b>6,382</b>	<b>86,094</b>

<sup>(1)</sup>CPS Reports or CWS Referrals not assigned to an office through the Assignment Designee, but were assigned to an office for an assessment or investigation.