



Child Protection and Permanency

Monthly Screening and Investigation Report September 2020

Christine Norbut Beyer, MSW
Commissioner



Table of Contents

Table 1: NJ State Central Registry Activity: Monthly Child Abuse and Neglect Hotline Calls, Intakes and Assignments to Child Protection & Permanency (CP&P) Offices

Chart 1: CP&P Annual Trends in Child Protection Services (CPS) Reports and Child Welfare Services (CWS) Referrals

Table 2: Assignments to CP&P Offices: CPS Reports and CWS Referrals

Table 3: Source of CPS Reports and CWS Referrals

Table 4: Monthly Count of CPS Reports and CWS Referrals Assigned to Counties

Table 5: Monthly Count of CPS Reports and CWS Referrals Assigned to CP&P Local Offices

Table 1: NJ State Central Registry Activity: Monthly Child Abuse and Neglect Hotline Calls, Intakes and Assignments to CP&P Offices^{1,2,7}

2019-2020	Hotline Call Activity				Intakes Recorded in NJ SPIRIT ^{6,8}														Assignments to CP&P Offices				
	Total Calls to SCR ³	Abandon Calls ⁴	Average Time to Answer (seconds)	Resulting NJS Intakes ⁵	CPS Reports		CWS Referrals		No Action Required (NAR)		Related Information (RI)		Information & Referral (I&R)		Information Only (IO)		Unusual Incident (UIRS)		CPS Reports		CWS Referrals		Total
					n	%	n	%	n	%	n	%	n	%	n	%	n	%	n	%	n	%	
September 2019	13,737	991	72	14,995	5,315	35.4%	1,551	10.3%	266	1.8%	3,695	24.6%	1,790	11.9%	2,378	15.9%	0	15.9%	5,315	77.4%	1,551	22.6%	6,866
October 2019	15,981	1,270	95	16,503	5,968	36.2%	1,923	11.7%	260	1.6%	4,039	24.5%	1,959	11.9%	2,354	14.3%	0	14.3%	5,968	75.6%	1,926	24.4%	7,894
November 2019	12,937	1,128	92	14,799	4,991	33.7%	1,434	9.7%	205	1.4%	3,681	24.9%	1,741	11.8%	2,747	18.6%	0	18.6%	4,991	77.7%	1,432	22.3%	6,423
December 2019	12,832	1,147	102	13,166	4,855	36.9%	1,432	10.9%	203	1.5%	3,204	24.3%	1,478	11.2%	1,994	15.1%	0	15.1%	4,855	77.2%	1,434	22.8%	6,289
January 2020	15,893	2,070	141	15,573	5,715	36.7%	1,841	11.8%	227	1.5%	3,717	23.9%	1,976	12.7%	2,097	13.5%	0	13.5%	5,715	75.6%	1,842	24.4%	7,557
February 2020	14,714	1,744	150	14,684	5,380	36.6%	1,625	11.1%	226	1.5%	3,605	24.6%	1,854	12.6%	1,994	13.6%	0	0.0%	5,380	76.8%	1,624	23.2%	7,004
March 2020	12,263	1,262	11	12,398	4,171	33.6%	1,063	8.6%	199	1.6%	3,075	24.8%	1,885	15.2%	2,005	16.2%	5	0.0%	4,172	79.7%	1,065	20.3%	5,237
April 2020	7,500	548	76	7,917	2,149	27.1%	407	5.1%	196	2.5%	1,852	23.4%	1,866	23.6%	1,447	18.3%	0	0.0%	2,149	84.1%	407	15.9%	2,556
May 2020	9,654	1,808	249	9,402	2,897	30.8%	537	5.7%	137	1.5%	2,342	24.9%	1,974	21.0%	1,515	16.1%	0	0.0%	2,897	84.4%	537	15.6%	3,434
June 2020	10,871	3,782	305	9,131	3,045	33.3%	636	7.0%	133	1.5%	2,281	25.0%	1,554	17.0%	1,482	16.2%	0	0.0%	3,045	82.7%	636	17.3%	3,681
July 2020	11,649	1,628	237	11,499	3,628	31.6%	738	6.4%	145	1.3%	2,892	25.2%	1,815	15.8%	2,281	19.8%	0	0.0%	3,628	83.1%	738	16.9%	4,366
August 2020	11,248	1,493	232	11,204	3,569	31.9%	821	7.3%	164	1.5%	2,993	26.7%	1,649	14.7%	2,008	17.9%	0	0.0%	3,569	81.3%	822	18.7%	4,391
September 2020	12,277	1,495	203	12,505	4,153	33.2%	1,031	8.2%	246	2.0%	3,097	24.8%	2,046	16.4%	1,932	15.4%	0	0.0%	4,153	80.1%	1,030	19.9%	5,183
	12,427	1,567	151	12,598	4,295	34.1%	1,157	9.2%	201	1.6%	3,113	24.7%	1,814	14.4%	2,018	16.0%	0	0.0%	4,295	78.8%	1,157	21.2%	5,452
Overall Total	161,556	20,366		163,776	55,836		15,039		2,607		40,473		23,587		26,234		5		55,837	78.8%	15,044	21.2%	70,881

¹Comes from three distinct sources: (1) the Automatic Call Distribution (ACD) phone system; which keeps a count of the number of calls and call routing; (2) Monthly NJSpirit Intakes; which record decision making on calls received by hotline screeners, and (3) NJSpirit extracts of assigned CWS Referrals and CPS Reports.

²The number of Intakes, CPS Reports, and CWS Referrals are based on an extract from NJSpirit.

Data extracted by the Office of Research, Evaluation, and Reporting on **October 08, 2020** includes all Intakes, CPS Reports, and CWS Referrals received from **September 01, 2020** through **September 30, 2020**.

³The number calls received through the ACD System that were directed to a screener from any call-in phone number.

⁴The number of calls received through the ACD System that are abandoned either while waiting in queue or while ringing.

⁵The number of Intakes entered in NJSpirit from the number of calls received.

⁶The number of Intakes recorded in NJSpirit, by type of Intake. There is not a one-to-one relationship between an ACD call and an Intake; multiple calls to State Central Registry (SCR) may result in a single Intake, or one call may result in multiple Intakes.

⁷Intake: The process of documenting: a report of alleged abuse or neglect of a child (CPS); a request for services on behalf of a child, or a referral of a child for services (CWS); a call in which the caller provides additional or clarifying information about a current service case or active investigation (RI); informing a caller of, or referring a caller to, services available from other private or public sources (I&R); a call that requires no action by CP&P (NAR); or a response to a simple inquiry (IO).

CP&P Annual Trends in CPS Reports and CWS Referrals

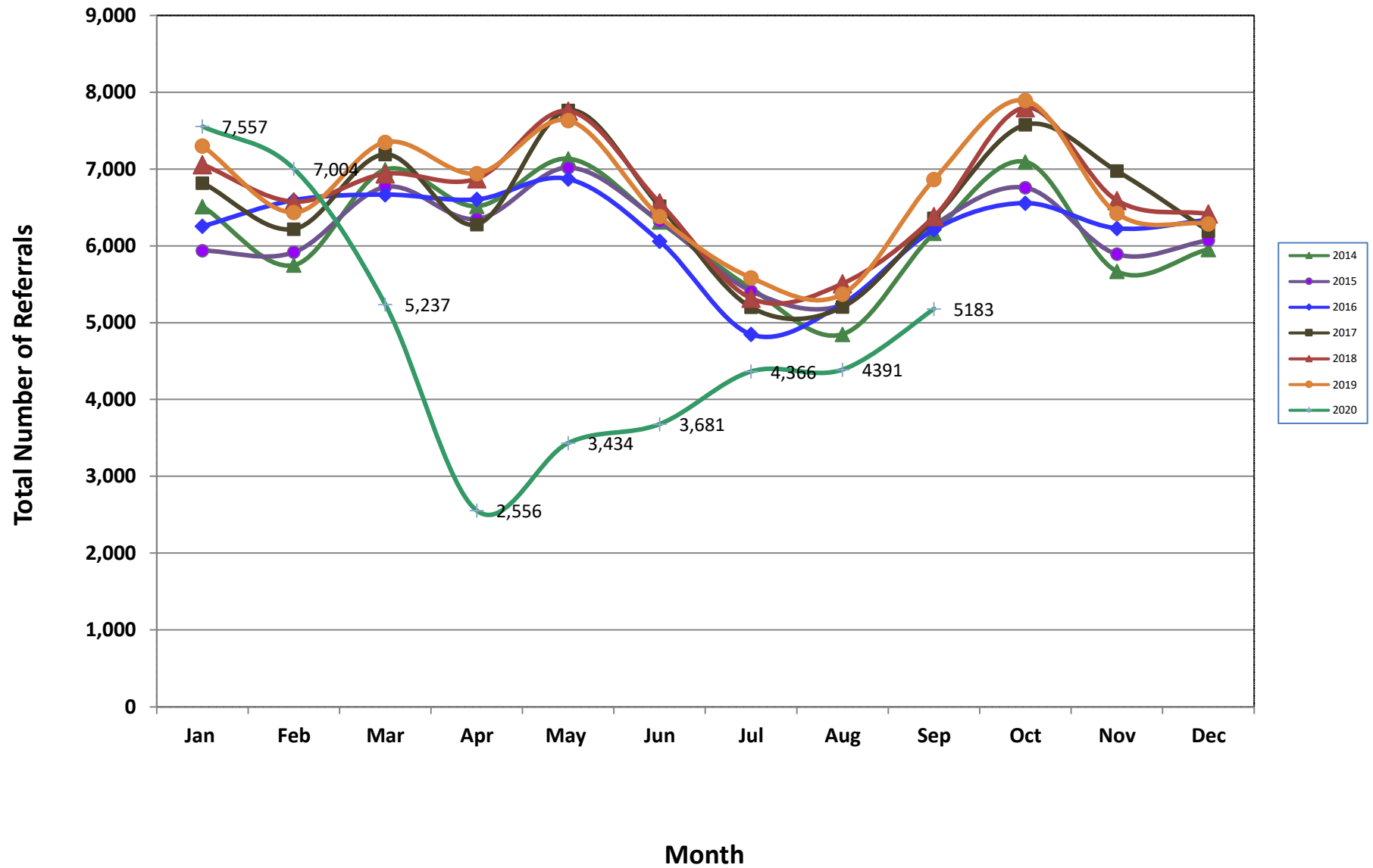


Table 2: Assignments to CP&P Offices: CPS Reports and CWS Referrals¹

Intake Date ³		CPS Reports ²	CWS Referrals ²	Total Assignments ²
2015	Jan 2015	4,549	1,391	5,940
	Feb 2015	4,574	1,345	5,919
	Mar 2015	5,187	1,580	6,767
	Apr 2015	4,967	1,384	6,351
	May 2015	5,457	1,561	7,018
	Jun 2015	4,887	1,436	6,323
	Jul 2015	4,140	1,273	5,413
	Aug 2015	3,978	1,256	5,234
	Sep 2015	4,776	1,495	6,271
	Oct 2015	5,139	1,619	6,758
	Nov 2015	4,417	1,477	5,894
	Dec 2015	4,530	1,544	6,074
	Total	56,601	17,361	73,962
2016	Jan 2016	4,686	1,571	6,257
	Feb 2016	4,974	1,622	6,596
	Mar 2016	5,000	1,669	6,669
	Apr 2016	5,065	1,542	6,607
	May 2016	5,238	1,633	6,871
	Jun 2016	4,602	1,461	6,063
	Jul 2016	3,663	1,187	4,850
	Aug 2016	3,941	1,307	5,248
	Sep 2016	4,654	1,559	6,213
	Oct 2016	4,935	1,622	6,557
	Nov 2016	4,677	1,552	6,229
	Dec 2016	4,762	1,580	6,342
	Total	56,197	18,305	74,502
2017	Jan 2017	5,111	1,708	6,819
	Feb 2017	4,716	1,504	6,220
	Mar 2017	5,349	1,843	7,192
	Apr 2017	4,790	1,490	6,280
	May 2017	5,847	1,919	7,766
	Jun 2017	4,853	1,665	6,518
	Jul 2017	3,814	1,389	5,203
	Aug 2017	3,866	1,340	5,206
	Sep 2017	4,719	1,643	6,362
	Oct 2017	5,613	1,966	7,579
	Nov 2017	5,223	1,753	6,976
	Dec 2017	4,601	1,594	6,195
	Total	58,502	19,814	78,316

Table 2: Assignments to CP&P Offices: CPS Reports and CWS Referrals¹

Intake Date ³		CPS Reports ²	CWS Referrals ²	Total Assignments ²
2018	Jan 2018	5,276	1,784	7,060
	Feb 2018	4,933	1,644	6,577
	Mar 2018	5,212	1,727	6,939
	Apr 2018	5,275	1,601	6,876
	May 2018	5,920	1,836	7,756
	Jun 2018	4,948	1,615	6,563
	Jul 2018	4,011	1,308	5,319
	Aug 2018	4,102	1,408	5,510
	Sep 2018	4,748	1,634	6,382
	Oct 2018	5,790	2,011	7,801
	Nov 2018	4,973	1,620	6,593
	Dec 2018	4,891	1,527	6,418
	Total	60,079	19,715	79,794
2019	Jan 2019	5,443	1,858	7,301
	Feb 2019	4,811	1,628	6,439
	Mar 2019	5,677	1,824	7,501
	Apr 2019	5,313	1,630	6,943
	May 2019	5,853	1,781	7,634
	Jun 2019	4,874	1,509	6,383
	Jul 2019	4,277	1,309	5,586
	Aug 2019	4,068	1,306	5,374
	Sep 2019	5,315	1,551	6,866
	Oct 2019	5,968	1,926	7,894
	Nov 2019	4,991	1,432	6,423
	Dec 2019	4,855	1,434	6,289
	Total	61,445	1,434	6,289
2020	Jan 2020	5,715	1,842	7,557
	Feb 2020	5,380	1,624	7,004
	Mar 2020	4,172	1,065	5,237
	Apr 2020	2,149	407	2,556
	May 2020	2,897	537	3,434
	Jun 2020	3,045	636	3,681
	Jul 2020	3,628	738	4,366
	Aug 2020	3,569	822	4,391
	Sep 2020	4,153	1,030	5,183
	Total	34,708	8,701	43,409
Grand Total		327,532	103,084	430,616

Table 3: Source of CPS Reports and CWS Referrals

CPS Reports and CWS Referrals	Source	Sep 2019	Oct 2019	Nov 2019	Dec 2019	Jan 2020	Feb 2020	Mar 2020	Apr 2020	May 2020	Jun 2020	Jul 2020	Aug 2020	Sep 2020		13 Month Total	
	School Staff	1,479	2,314	1,703	1,562	2,327	2,148	1,188	143	210	119	70	63	565	11%	13,891	20%
	Healthcare Provider	963	1,059	886	923	990	937	760	499	656	775	784	819	882	17%	10,933	15%
	Law Enforcement	1,432	1,425	1,260	1,247	1,295	1,349	1,197	792	1,086	1,140	1,440	1,372	1,400	27%	16,435	23%
	Government Agency	417	457	343	367	452	342	240	134	198	238	274	304	295	6%	4,061	6%
	Parent	534	529	425	448	509	435	395	219	281	326	400	395	431	8%	5,327	8%
	Relative/Friend/Neighbor	505	427	384	388	411	334	345	232	296	326	392	343	424	8%	4,807	7%
	Anonymous	615	674	556	508	600	603	437	222	284	294	416	425	502	10%	6,136	9%
	CP&P	102	110	82	89	106	74	67	28	31	42	47	104	95	2%	977	1%
	Court/Legal	180	207	160	158	210	162	104	40	59	50	80	81	99	2%	1,590	2%
	Community Group/Individual	257	310	287	227	317	279	199	111	143	157	193	171	177	3%	2,828	4%
	Facility Staff (incl Correctional Facility)	74	79	67	83	79	93	40	21	41	43	63	61	72	1%	816	1%
	Child (Self)	45	34	27	37	28	21	25	7	17	17	25	29	31	1%	343	0%
	Other	249	250	235	242	213	210	227	105	130	149	175	219	204	4%	2,608	4%
	Daycare/Babysitter	14	19	8	10	20	17	13	3	2	5	7	5	6	0%	129	0%
Total	6,866	7,894	6,423	6,289	7,557	7,004	5,237	2,556	3,434	3,681	4,366	4,391	5,183		70,881		

Table 4: Monthly Count of CPS Reports and CWS Referrals Assigned to Counties

County														Average Number of Assignments Last 13 Months	Aug 20 to Sep 20 Numerical Difference
	Sep 2019	Oct 2019	Nov 2019	Dec 2019	Jan 2020	Feb 2020	Mar 2020	Apr 2020	May 2020	Jun 2020	Jul 2020	Aug 2020	Sep 2020		
Atlantic	282	302	258	261	292	298	244	121	161	180	214	195	243	235	48
Bergen	402	471	423	375	457	418	281	145	189	194	232	233	300	317	67
Burlington	352	385	305	285	383	368	256	133	181	185	231	237	271	275	34
Camden	572	625	523	508	603	581	437	216	305	325	362	345	433	449	88
Cape May	112	105	78	78	85	58	70	33	50	66	72	65	87	74	22
Cumberland	206	256	216	221	238	216	171	96	116	130	145	131	165	177	34
Essex	713	848	703	651	790	735	525	249	364	366	440	486	538	570	52
Gloucester	259	279	271	266	285	297	221	111	160	177	198	192	232	227	40
Hudson	400	535	437	415	558	449	347	137	226	199	282	268	274	348	6
Hunterdon	74	60	63	66	67	48	39	22	30	24	33	40	42	47	2
Mercer	276	337	290	267	344	279	210	106	144	164	197	187	234	233	47
Middlesex	489	558	426	488	580	475	405	205	231	283	310	321	344	393	23
Monmouth	378	437	350	349	411	381	301	166	196	233	263	267	302	310	35
Morris	266	255	226	212	264	273	194	85	124	137	152	150	202	195	52
Ocean	428	525	387	406	482	446	355	177	257	264	336	278	349	361	71
Passaic	443	519	390	409	456	460	353	143	213	219	267	250	321	342	71
Salem	92	98	78	69	79	82	75	35	44	53	56	48	56	67	8
Somerset	180	202	155	146	197	189	126	66	92	82	114	101	155	139	54
Sussex	125	129	91	104	114	116	73	47	48	51	86	73	92	88	19
Union	321	400	345	327	383	383	246	137	147	190	181	225	261	273	36
Warren	97	96	93	82	98	101	65	54	50	56	75	77	86	79	9
County Subtotals	6,467	7,422	6,108	5,985	7,166	6,653	4,994	2,484	3,328	3,578	4,246	4,169	4,987	5,199	818
Central Region IAIU	60	70	49	48	67	64	34	10	6	23	17	17	26	38	9
Metro Region IAIU	43	80	45	41	46	69	33	3	11	2	13	13	8	31	-5
Northern Region IAIU	68	77	45	45	59	42	44	6	12	10	14	12	11	34	-1
Southern Region IAIU	83	75	59	62	82	61	51	12	18	20	23	30	25	46	-5
IAIU Subtotals	254	302	198	196	254	236	162	31	47	55	67	72	70	150	-2
¹ Unable to Determine	145	170	117	108	135	113	79	39	59	48	51	149	126	103	-23
Other Offices	0	0	0	0	2	2	2	2	0	0	2	1	0	1	-1
Grand Total	6,866	7,894	6,423	6,289	7,557	7,004	5,237	2,556	3,434	3,681	4,366	4,391	5,183	5,452	792

¹CPS Reports or CWS Referrals not assigned to an office through the Assignment Designee, but were assigned to an office for an assessment or investigation.



Table 5: Monthly Count of CPS Reports and CWS Referrals Assigned to CP&P Local Offices

County	Local Office	Type of Referral														Total
			Sep 2019	Oct 2019	Nov 2019	Dec 2019	Jan 2020	Feb 2020	Mar 2020	Apr 2020	May 2020	Jun 2020	Jul 2020	Aug 2020	Sep 2020	
ATLANTIC	Atlantic East	CPS	127	134	117	133	120	116	115	55	70	82	96	100	109	1,374
		CWS	46	38	26	31	33	55	30	9	16	25	24	22	32	387
		Total	173	172	143	164	153	171	145	64	86	107	120	122	141	1,761
	Atlantic West	CPS	76	86	99	79	101	95	82	50	64	57	75	64	88	1,016
		CWS	33	44	16	18	38	32	17	7	11	16	19	9	14	274
		Total	109	130	115	97	139	127	99	57	75	73	94	73	102	1,290
	County Totals	CPS	203	220	216	212	221	211	197	105	134	139	171	164	197	2,390
		CWS	79	82	42	49	71	87	47	16	27	41	43	31	46	661
		Total	282	302	258	261	292	298	244	121	161	180	214	195	243	3,051
BERGEN	Bergen Central	CPS	131	150	137	102	145	135	81	55	66	66	85	85	89	1,327
		CWS	46	57	47	51	57	47	24	12	13	21	14	12	31	432
		Total	177	207	184	153	202	182	105	67	79	87	99	97	120	1,759
	Bergen South	CPS	166	192	174	171	182	179	126	67	90	92	104	118	144	1,805
		CWS	59	72	65	51	73	57	50	11	20	15	29	18	36	556
		Total	225	264	239	222	255	236	176	78	110	107	133	136	180	2,361
	County Totals	CPS	297	342	311	273	327	314	207	122	156	158	189	203	233	3,132
		CWS	105	129	112	102	130	104	74	23	33	36	43	30	67	988
		Total	402	471	423	375	457	418	281	145	189	194	232	233	300	4,120
BURLINGTON	Burlington East	CPS	126	145	114	109	147	142	99	55	74	95	80	101	100	1,387
		CWS	55	39	44	48	50	40	22	12	17	11	29	17	30	414
		Total	181	184	158	157	197	182	121	67	91	106	109	118	130	1,801
	Burlington West	CPS	133	153	113	96	143	141	106	51	76	68	99	95	117	1,391
		CWS	38	48	34	32	43	45	29	15	14	11	23	24	24	380
		Total	171	201	147	128	186	186	135	66	90	79	122	119	141	1,771
	County Totals	CPS	259	298	227	205	290	283	205	106	150	163	179	196	217	2,778
		CWS	93	87	78	80	93	85	51	27	31	22	52	41	54	794
		Total	352	385	305	285	383	368	256	133	181	185	231	237	271	3,572
CAMDEN	Camden Central	CPS	127	122	100	118	112	119	99	40	68	86	74	69	87	1,221
		CWS	27	40	28	24	43	29	14	12	11	15	21	18	20	302
		Total	154	162	128	142	155	148	113	52	79	101	95	87	107	1,523
	Camden East	CPS	103	111	114	100	94	102	82	45	54	59	67	78	98	1,107
		CWS	34	30	31	30	44	32	16	7	8	14	18	15	19	298
		Total	137	141	145	130	138	134	98	52	62	73	85	93	117	1,405
	Camden North	CPS	111	135	101	84	119	117	96	39	56	71	81	63	85	1,158
		CWS	47	40	37	26	31	28	26	9	15	12	13	18	20	322
		Total	158	175	138	110	150	145	122	48	71	83	94	81	105	1,480
	Camden South	CPS	91	113	88	96	125	122	82	54	73	59	71	67	84	1,125
		CWS	32	34	24	30	35	32	22	10	20	9	17	17	20	302
		Total	123	147	112	126	160	154	104	64	93	68	88	84	104	1,427
	County Totals	CPS	432	481	403	398	450	460	359	178	251	275	293	277	354	4,611
		CWS	140	144	120	110	153	121	78	38	54	50	69	68	79	1,224
		Total	572	625	523	508	603	581	437	216	305	325	362	345	433	5,835
CAPE MAY	Cape May	CPS	87	75	63	62	68	42	56	29	37	55	58	52	75	759
		CWS	25	30	15	16	17	16	14	4	13	11	14	13	12	200
		Total	112	105	78	78	85	58	70	33	50	66	72	65	87	959
	County Totals	CPS	87	75	63	62	68	42	56	29	37	55	58	52	75	759
		CWS	25	30	15	16	17	16	14	4	13	11	14	13	12	200
Total	112	105	78	78	85	58	70	33	50	66	72	65	87	959		
CUMBERLAND	Cumberland East	CPS	51	59	47	61	57	52	44	24	40	44	37	43	49	608
		CWS	9	16	19	9	11	12	11	10	8	6	6	6	6	129
		Total	60	75	66	70	68	64	55	34	48	50	43	49	55	737
	Cumberland West	CPS	118	139	119	126	141	121	91	53	56	66	91	70	89	1,280
		CWS	28	42	31	25	29	31	25	9	12	14	11	12	21	290
		Total	146	181	150	151	170	152	116	62	68	80	102	82	110	1,570
	County Totals	CPS	169	198	166	187	198	173	135	77	96	110	128	113	138	1,888
CWS		37	58	50	34	40	43	36	19	20	20	17	18	27	419	
Total	206	256	216	221	238	216	171	96	116	130	145	131	165	2,307		

Data in this report is preliminary and may differ from any final report. This report is produced to ensure continuous quality improvement throughout DCF.



Table 5: Monthly Count of CPS Reports and CWS Referrals Assigned to CP&P Local Offices

County	Local Office	Type of Referral														Total
			Sep 2019	Oct 2019	Nov 2019	Dec 2019	Jan 2020	Feb 2020	Mar 2020	Apr 2020	May 2020	Jun 2020	Jul 2020	Aug 2020	Sep 2020	
ESSEX	Essex Central	CPS	111	121	96	98	106	99	71	58	60	58	61	67	69	1,075
		CWS	32	48	32	28	35	36	21	6	8	8	20	17	17	308
		Total	143	169	128	126	141	135	92	64	68	66	81	84	86	1,383
	Essex North	CPS	65	79	75	63	78	92	50	24	28	39	47	42	45	727
		CWS	27	24	23	22	30	26	19	2	18	8	9	9	21	238
		Total	92	103	98	85	108	118	69	26	46	47	56	51	66	965
	Essex South	CPS	66	66	83	71	87	64	65	22	32	46	40	54	53	749
		CWS	20	35	24	21	25	24	14	7	7	10	11	16	14	228
		Total	86	101	107	92	112	88	79	29	39	56	51	70	67	977
	Newark Center City	CPS	101	118	83	93	121	114	74	33	59	53	73	69	99	1090
		CWS	36	35	30	35	29	33	17	8	12	6	16	12	18	287
		Total	137	153	113	128	150	147	91	41	71	59	89	81	117	1377
	Newark Northeast	CPS	94	116	98	74	97	95	77	38	47	55	58	62	72	983
		CWS	28	35	27	19	35	25	19	7	5	17	15	17	17	266
		Total	122	151	125	93	132	120	96	45	52	72	73	79	89	1249
Newark South	CPS	104	134	107	95	120	94	74	38	69	50	72	93	91	1141	
	CWS	29	37	25	32	27	33	24	6	19	16	18	28	22	316	
	Total	133	171	132	127	147	127	98	44	88	66	90	121	113	1457	
County Totals	CPS	541	634	542	494	609	558	411	213	295	301	351	387	429	5765	
	CWS	172	214	161	157	181	177	114	36	69	65	89	99	109	1643	
	Total	713	848	703	651	790	735	525	249	364	366	440	486	538	7408	
GLOUCESTER	Gloucester East	CPS	98	109	94	102	111	110	90	47	67	71	79	75	83	1136
		CWS	19	25	28	24	26	32	16	9	7	14	15	15	14	244
		Total	117	134	122	126	137	142	106	56	74	85	94	90	97	1380
	Gloucester West	CPS	120	114	122	107	116	117	88	45	76	75	87	88	112	1267
		CWS	22	31	27	33	32	38	27	10	10	17	17	14	23	301
		Total	142	145	149	140	148	155	115	55	86	92	104	102	135	1568
	County Totals	CPS	218	223	216	209	227	227	178	92	143	146	166	163	195	2403
CWS		41	56	55	57	58	70	43	19	17	31	32	29	37	545	
Total		259	279	271	266	285	297	221	111	160	177	198	192	232	2948	
HUDSON	Hudson Central	CPS	90	122	112	103	141	99	88	37	69	62	81	74	75	1153
		CWS	35	41	37	26	48	37	32	12	12	19	21	19	21	360
		Total	125	163	149	129	189	136	120	49	81	81	102	93	96	1513
	Hudson North	CPS	78	97	82	67	85	85	66	23	42	34	56	46	53	814
		CWS	20	29	26	23	33	25	15	10	13	12	14	15	16	251
		Total	98	126	108	90	118	110	81	33	55	46	70	61	69	1065
	Hudson South	CPS	46	65	50	49	77	62	44	11	31	23	36	40	31	565
		CWS	13	25	13	19	27	13	12	5	8	7	10	7	7	166
		Total	59	90	63	68	104	75	56	16	39	30	46	47	38	731
	Hudson West	CPS	86	110	87	101	108	100	65	34	45	35	47	55	58	931
		CWS	32	46	30	27	39	28	25	5	6	7	17	12	13	287
		Total	118	156	117	128	147	128	90	39	51	42	64	67	71	1218
	County Totals	CPS	300	394	331	320	411	346	263	105	187	154	220	215	217	3463
		CWS	100	141	106	95	147	103	84	32	39	45	62	53	57	1064
		Total	400	535	437	415	558	449	347	137	226	199	282	268	274	4527
HUNTERDON	Hunterdon	CPS	56	46	45	51	48	37	30	20	27	20	29	34	31	474
		CWS	18	14	18	15	19	11	9	2	3	4	4	6	11	134
		Total	74	60	63	66	67	48	39	22	30	24	33	40	42	608
	County Totals	CPS	56	46	45	51	48	37	30	20	27	20	29	34	31	474
		CWS	18	14	18	15	19	11	9	2	3	4	4	6	11	134
Total	74	60	63	66	67	48	39	22	30	24	33	40	42	608		
MERCER	Mercer North	CPS	113	100	111	106	120	108	89	45	50	76	87	78	101	1184
		CWS	30	52	27	36	30	41	17	14	16	11	16	15	17	322
		Total	143	152	138	142	150	149	106	59	66	87	103	93	118	1506
	Mercer South	CPS	107	140	108	102	144	102	85	36	65	65	81	78	92	1205
		CWS	26	45	44	23	50	28	19	11	13	12	13	16	24	324
		Total	133	185	152	125	194	130	104	47	78	77	94	94	116	1529
	County Totals	CPS	220	240	219	208	264	210	174	81	115	141	168	156	193	2389
CWS		56	97	71	59	80	69	36	25	29	23	29	31	41	646	
Total		276	337	290	267	344	279	210	106	144	164	197	187	234	3035	

Data in this report is preliminary and may differ from any final report. This report is produced to ensure continuous quality improvement throughout DCF.



Table 5: Monthly Count of CPS Reports and CWS Referrals Assigned to CP&P Local Offices

County	Local Office	Type of Referral														Total
			Sep 2019	Oct 2019	Nov 2019	Dec 2019	Jan 2020	Feb 2020	Mar 2020	Apr 2020	May 2020	Jun 2020	Jul 2020	Aug 2020	Sep 2020	
MIDDLESEX	Middlesex Central	CPS	103	129	103	103	139	109	94	64	62	68	67	66	73	1180
		CWS	26	30	27	25	36	31	23	10	6	10	11	12	19	266
		Total	129	159	130	128	175	140	117	74	68	78	78	78	92	1446
	Middlesex Coastal	CPS	136	146	115	146	160	135	131	54	69	95	109	116	105	1517
		CWS	37	49	43	35	41	32	35	14	12	15	17	20	16	366
		Total	173	195	158	181	201	167	166	68	81	110	126	136	121	1883
	Middlesex West	CPS	136	145	121	139	151	125	97	58	75	79	84	88	102	1400
		CWS	51	59	17	40	53	43	25	5	7	16	22	19	29	386
		Total	187	204	138	179	204	168	122	63	82	95	106	107	131	1786
	County Totals	CPS	375	420	339	388	450	369	322	176	206	242	260	270	280	4097
		CWS	114	138	87	100	130	106	83	29	25	41	50	51	64	1018
		Total	489	558	426	488	580	475	405	205	231	283	310	321	344	5115
MONMOUTH	Monmouth North	CPS	172	182	168	146	171	154	134	84	98	106	123	118	128	1784
		CWS	37	56	50	51	63	42	37	10	18	22	26	27	33	472
		Total	209	238	218	197	234	196	171	94	116	128	149	145	161	2256
	Monmouth South	CPS	127	152	101	123	124	138	110	58	71	89	99	100	118	1410
		CWS	42	47	31	29	53	47	20	14	9	16	15	22	23	368
		Total	169	199	132	152	177	185	130	72	80	105	114	122	141	1778
	County Totals	CPS	299	334	269	269	295	292	244	142	169	195	222	218	246	3194
		CWS	79	103	81	80	116	89	57	24	27	38	41	49	56	840
		Total	378	437	350	349	411	381	301	166	196	233	263	267	302	4034
MORRIS	Morris East	CPS	84	85	91	71	94	85	75	35	70	48	53	64	77	932
		CWS	33	36	33	25	36	42	19	8	15	16	13	12	24	312
		Total	117	121	124	96	130	127	94	43	85	64	66	76	101	1244
	Morris West	CPS	116	99	78	89	101	115	75	39	34	58	75	53	87	1019
		CWS	33	35	24	27	33	31	25	3	5	15	11	21	14	277
		Total	149	134	102	116	134	146	100	42	39	73	86	74	101	1296
	County Totals	CPS	200	184	169	160	195	200	150	74	104	106	128	117	164	1951
		CWS	66	71	57	52	69	73	44	11	20	31	24	33	38	589
		Total	266	255	226	212	264	273	194	85	124	137	152	150	202	2540
OCEAN	Ocean North	CPS	189	207	158	189	197	196	150	81	133	121	147	121	147	2036
		CWS	55	85	36	45	67	47	37	8	17	18	24	20	36	495
		Total	244	292	194	234	264	243	187	89	150	139	171	141	183	2531
	Ocean South	CPS	146	174	152	134	173	168	131	73	95	113	142	112	132	1745
		CWS	38	59	41	38	45	35	37	15	12	12	23	25	34	414
		Total	184	233	193	172	218	203	168	88	107	125	165	137	166	2159
	County Totals	CPS	335	381	310	323	370	364	281	154	228	234	289	233	279	3781
		CWS	93	144	77	83	112	82	74	23	29	30	47	45	70	909
		Total	428	525	387	406	482	446	355	177	257	264	336	278	349	4690
PASSAIC	Passaic Central	CPS	183	205	153	140	172	180	154	55	87	102	102	86	124	1743
		CWS	65	73	50	64	66	63	44	17	24	25	18	22	30	561
		Total	248	278	203	204	238	243	198	72	111	127	120	108	154	2304
	Passaic North	CPS	154	182	141	151	149	160	124	60	84	70	123	108	137	1643
		CWS	41	59	46	54	69	57	31	11	18	22	24	34	30	496
		Total	195	241	187	205	218	217	155	71	102	92	147	142	167	2139
	County Totals	CPS	337	387	294	291	321	340	278	115	171	172	225	194	261	3386
		CWS	106	132	96	118	135	120	75	28	42	47	42	56	60	1057
		Total	443	519	390	409	456	460	353	143	213	219	267	250	321	4443
SALEM	Salem	CPS	74	82	71	51	58	58	64	31	37	40	45	39	44	694
		CWS	18	16	7	18	21	24	11	4	7	13	11	9	12	171
		Total	92	98	78	69	79	82	75	35	44	53	56	48	56	865
	County Totals	CPS	74	82	71	51	58	58	64	31	37	40	45	39	44	694
		CWS	18	16	7	18	21	24	11	4	7	13	11	9	12	171
		Total	92	98	78	69	79	82	75	35	44	53	56	48	56	865
SOMERSET	Somerset	CPS	140	158	124	115	150	151	103	57	78	69	98	84	117	1444
		CWS	40	44	31	31	47	38	23	9	14	13	16	17	38	361
		Total	180	202	155	146	197	189	126	66	92	82	114	101	155	1805
	County Totals	CPS	140	158	124	115	150	151	103	57	78	69	98	84	117	1444
		Total	180	202	155	146	197	189	126	66	92	82	114	101	155	1805

Data in this report is preliminary and may differ from any final report. This report is produced to ensure continuous quality improvement throughout DCF.



Table 5: Monthly Count of CPS Reports and CWS Referrals Assigned to CP&P Local Offices

County	Local Office	Type of Referral														Total
			Sep 2019	Oct 2019	Nov 2019	Dec 2019	Jan 2020	Feb 2020	Mar 2020	Apr 2020	May 2020	Jun 2020	Jul 2020	Aug 2020	Sep 2020	
SUSSEX	Sussex	CPS	104	97	71	74	85	93	55	41	38	45	75	59	70	907
		CWS	21	32	20	30	29	23	18	6	10	6	11	14	22	242
		Total	125	129	91	104	114	116	73	47	48	51	86	73	92	1149
	County Totals	CPS	104	97	71	74	85	93	55	41	38	45	75	59	70	907
		CWS	21	32	20	30	29	23	18	6	10	6	11	14	22	242
UNION	Union Central	CPS	82	91	81	75	98	87	73	37	44	41	56	56	66	887
		CWS	26	31	32	32	29	31	16	8	6	10	8	11	13	253
		Total	108	122	113	107	127	118	89	45	50	51	64	67	79	1140
	Union East	CPS	68	89	81	86	92	97	54	35	44	50	46	84	66	892
		CWS	29	40	29	19	36	40	19	5	4	15	7	16	16	275
		Total	97	129	110	105	128	137	73	40	48	65	53	100	82	1167
	Union West	CPS	94	112	99	78	94	88	64	46	44	52	54	52	75	952
		CWS	22	37	23	37	34	40	20	6	5	22	10	6	25	287
		Total	116	149	122	115	128	128	84	52	49	74	64	58	100	1239
	County Totals	CPS	244	292	261	239	284	272	191	118	132	143	156	192	207	2731
		CWS	77	108	84	88	99	111	55	19	15	47	25	33	54	815
		Total	321	400	345	327	383	383	246	137	147	190	181	225	261	3546
	WARREN	Warren	CPS	79	72	78	69	67	77	55	46	43	40	64	66	70
CWS			18	24	15	13	31	24	10	8	7	16	11	11	16	204
Total			97	96	93	82	98	101	65	54	50	56	75	77	86	1030
County Totals		CPS	79	72	78	69	67	77	55	46	43	40	64	66	70	826
		CWS	18	24	15	13	31	24	10	8	7	16	11	11	16	204
Total	97	96	93	82	98	101	65	54	50	56	75	77	86	1030		
County CPS Referral Total		CPS	4,969	5,558	4,725	4,598	5,388	5,077	3,958	2,082	2,797	2,948	3,514	3,432	4,017	53,063
County CWS Referral Total		CWS	1,498	1,864	1,383	1,387	1,778	1,576	1,036	402	531	630	732	737	970	14,524
County Referral Total		Total	6,467	7,422	6,108	5,985	7,166	6,653	4,994	2,484	3,328	3,578	4,246	4,169	4,987	67,587
Central Region IAIU	CPS	60	70	49	48	67	63	34	10	6	23	17	17	26	490	
	CWS	0	0	0	0	0	0	0	0	0	0	0	0	0	0	
	Total	60	70	49	48	67	63	34	10	6	23	17	17	26	490	
Metro Region IAIU	CPS	43	80	45	41	46	69	33	3	11	2	13	13	8	407	
	CWS	0	0	0	0	0	0	0	0	0	0	0	0	0	0	
	Total	43	80	45	41	46	69	33	3	11	2	13	13	8	407	
Northern Region IAIU	CPS	68	77	45	45	59	42	44	6	12	10	14	12	11	445	
	CWS	0	0	0	0	0	0	0	0	0	0	0	0	0	0	
	Total	68	77	45	45	59	42	44	6	12	10	14	12	11	445	
Southern Region IAIU	CPS	83	75	59	62	82	61	51	12	18	20	23	30	25	601	
	CWS	0	0	0	0	0	0	0	0	0	0	0	0	0	0	
	Total	83	75	59	62	82	61	51	12	18	20	23	30	25	601	
IAIU CPS Subtotal		CPS	254	302	198	196	254	235	162	31	47	55	67	72	70	1,943
IAIU CWS Subtotal		CWS	0	0	0	0	0	0	0	0	0	0	0	0	0	0
IAIU Subtotal		Total	254	302	198	196	254	235	162	31	47	55	67	72	70	1,943
County and IAIU CPS Subtotal		CPS	5,223	5,860	4,923	4,794	5,642	5,312	4,120	2,113	2,844	3,003	3,581	3,504	4,087	55,006
County and IAIU CWS Subtotal		CWS	1,498	1,864	1,383	1,387	1,778	1,576	1,036	402	531	630	732	737	970	14,524
Unable to Determine(1)		Total	145	170	117	108	135	113	79	39	59	48	51	149	126	1,339
Other Offices		Total	0	0	0	0	2	3	2	2	0	2	1	0	12	12
Grand Total		Total	6,866	7,894	6,423	6,289	7,557	7,004	5,237	2,556	3,434	3,681	4,366	4,391	5,183	70,881

(1) CPS Reports or CWS Referrals not assigned to an office through the Assignment Designee, but were assigned to an office for an assessment or investigation.