



NEW JERSEY DEPARTMENT OF CHILDREN AND FAMILIES

New Jersey Statewide Student Support Services (NJ4S)
Advisory Taskforce Meeting
June 6, 2023

NJ4S Advisory Group Agenda

- Welcome
- Status of Hubs
 - Hub Advisory Groups
 - Hiring
 - Outreach to Communities
 - Outreach to School Districts
 - Major Accomplishments/Successes and Challenges
- NJ4S IT Build
 - Status report
 - Engagement of Hub Staff and School Representatives
- Evaluation
 - Discussion: Defining Success at the end of Year One



Division of Family and Community Partnerships – Implementation Support

- Statewide Implementation Team
- Weekly phone contact with hub agencies
- Biweekly Virtual Hub Meetings
 - Support NJ4S agencies by creating a space for learning and sharing which include discussions about:
 - implementation/operational facilitators and barriers
 - themes in implementation
 - trends
 - resource sharing, etc.



NJ4S Initial Implementation: Local Advisory Boards

Program Requirements: Initial Development of an Advisory Boards June 1

Recruitment Challenges	Initiating Outreach/Member Recruitment (have not met)	Board Established and Initial Meeting Occurred or is Scheduled
Vicinage 1: Acenda	Vicinage 2: CAFS	Vicinage 3: Legacy Treatment Services
Vicinage 15: Acenda	Vicinage 6: Partners in Prevention	Vicinage 4: Center for Family Services
	Vicinage 7: Catholic Charities	Vicinage 5: Family Connections Inc.
	Vicinage 8: Rutgers UBHC	Vicinage 10: Mental Health Association
	Vicinage 9: Preferred Behavioral Health	Vicinage 11: New Jersey Community Development Corp.
	Vicinage 12: Prevention Links	Vicinage 13: Center for Family Services
	Vicinage 14: Preferred Behavioral Health	Identified partner agencies and school staff to form board

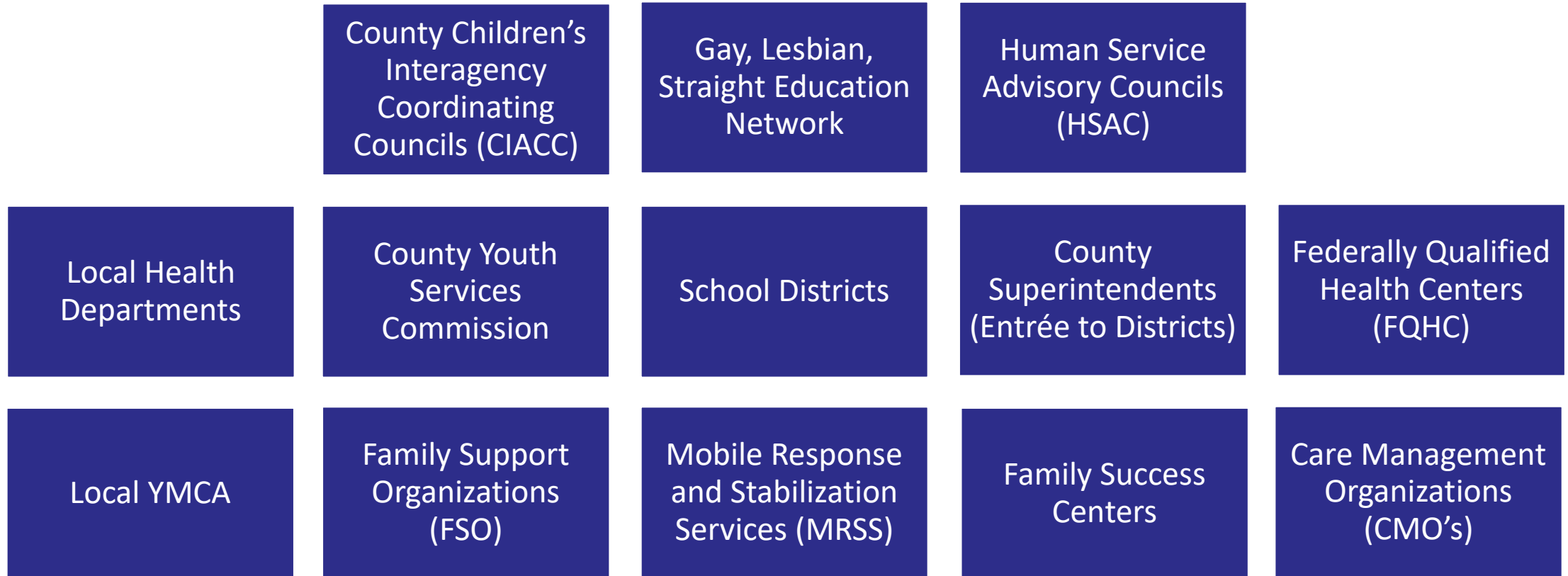
NJ4S Hub Implementation: Hub Leadership

Program Requirements: Onboard Hub Leadership by June 30

Vicinage	Agency Name	Director	Assistant Director
1	Acenda		
2	CAFS	x	
3	Legacy Treatment Services	x	x
4	Center for Family Services		
5	Family Connections Inc.	x	
6	Partners in Prevention	x	x
7	Catholic Charities	x	x
8	Rutgers UBHC		
9	Preferred Behavioral Health	x	x
10	Mental Health Association		x
11	New Jersey Community Development Corporation	x	
12	Prevention Links		
13	Center for Family Services		
14	Preferred Behavioral Health	x	x
15	Acenda		



NJ4S Initial Implementation: Initial Outreach



NJ4S Information System

- Application for Services
 - Engaging Hubs and School Staff in build
- Public Facing Page
 - What is NJ4S
 - Tier 1 Services Identified
- Service Tracking
- Training and Communication Plan



Successes and Challenges

- Hiring qualified staff in this environment is challenging. Nevertheless, progress is being made
- Interest by other parties in participating
- IT Build is progressing and on track



What do we want to know at the end of Year One

- Small Group Discussion
 - How do you define success for NJ4S after the first year of operation?
 - What questions do you want answered?



Defining Success for NJ4S One Year Out

	A Little Success	Moderate Success	Substantial Success
Hub Advisory Group Functioning			
Students			
Parents/Caregivers			
School			
Community			
Other?			
Communities/schools are in different starting places.			

